

Data Path : Z:\HPCHEM1\BNA_F\DATA\BF122315\
 Data File : BF084050.D
 Acq On : 23 Dec 2015 23:05
 Operator : UM/SJ
 Sample : G4907-01
 Misc :
 ALS Vial : 35 Sample Multiplier: 1

Instrument :
 BNA_F
 ClientSampleId :
 MW-14

Quant Time: Dec 24 00:39:49 2015
 Quant Method : Z:\HPCHEM1\BNA_F\METHODS\8270-BF122215.M
 Quant Title : ASP BNA STANDARDS FOR 5 POINT CALIBRATION
 QLast Update : Tue Dec 22 18:54:09 2015
 Response via : Initial Calibration

Internal Standards	R.T.	QIon	Response	Conc	Units	Dev(Min)
1) 1,4-Dichlorobenzene-d4	6.82	152	48867	20.00	ng	-0.01
21) Naphthalene-d8	8.11	136	177675	20.00	ng	0.00
38) Acenaphthene-d10	9.86	164	90175	20.00	ng	-0.01
63) Phenanthrene-d10	11.34	188	140320	20.00	ng	-0.01
75) Chrysene-d12	13.99	240	86435	20.00	ng	-0.01
86) Perylene-d12	15.41	264	84815	20.00	ng	-0.01

System Monitoring Compounds

5) 2-Fluorophenol	5.44	112	174769	60.98	ng	0.00
7) Phenol-d6	6.46	99	142585	42.31	ng	-0.01
23) Nitrobenzene-d5	7.39	82	313118	108.26	ng	0.00
41) 2,4,6-Tribromophenol	10.66	330	125591	144.80	ng	0.00
44) 2-Fluorobiphenyl	9.18	172	534389	79.76	ng	-0.01
78) Terphenyl-d14	12.92	244	332008	91.60	ng	-0.01

Target Compounds

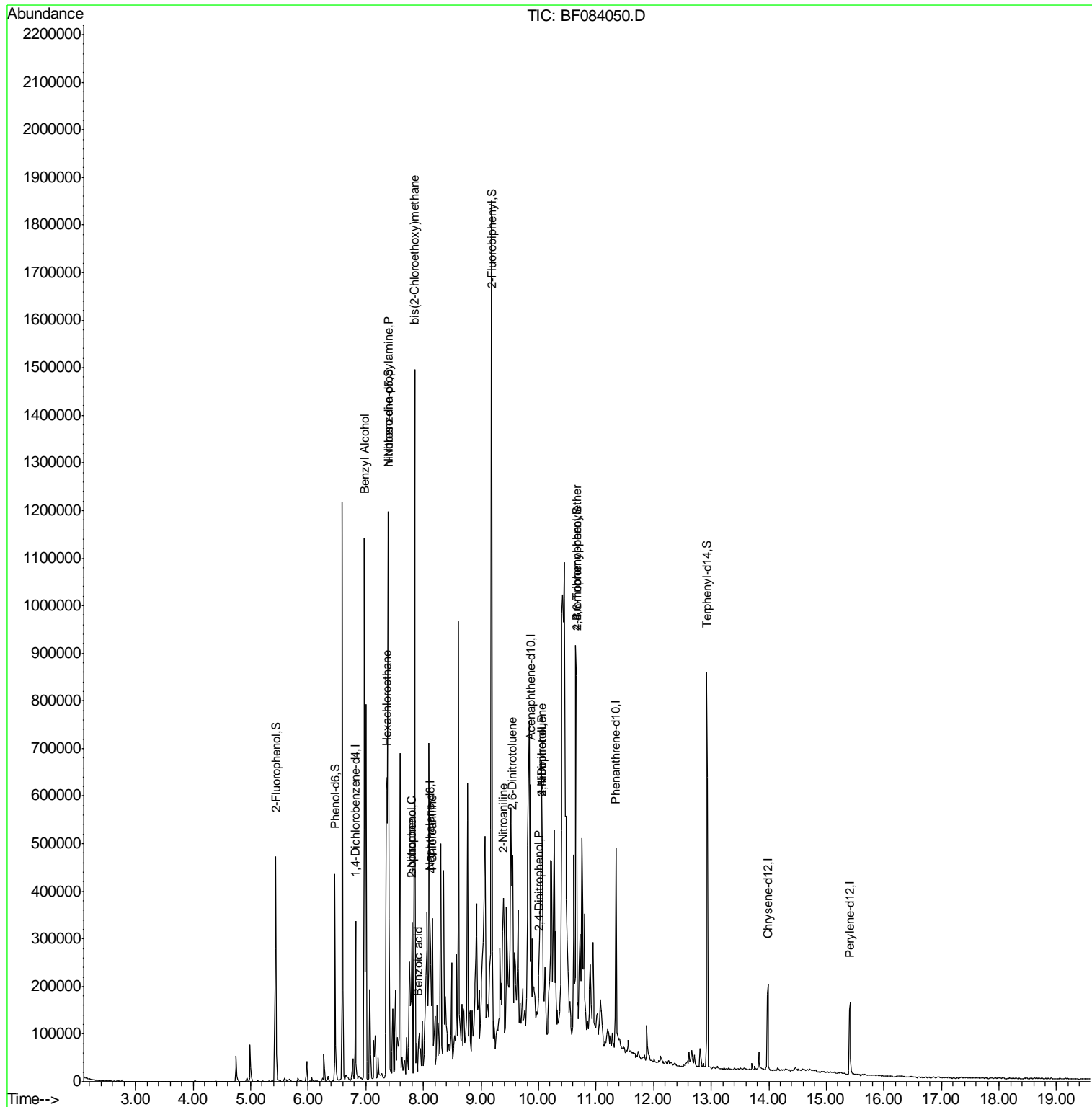
Target Compounds	R.T.	QIon	Response	Conc	Units	Qvalue
15) Benzyl Alcohol	6.98	79	7478	2.82	ng	# 33
18) Hexachloroethane	7.36	117	109701	83.54	ng	# 34
19) n-Nitroso-di-n-propylamine	7.39	70	46478	22.76	ng	# 77
25) Isophorone	7.80	82	19539	3.57	ng	# 1
26) 2-Nitrophenol	7.80	139	3557	2.22	ng	# 1
28) bis(2-Chloroethoxy)methane	7.85	93	7998	2.36	ng	# 11
32) Benzoic acid	7.92	122	502	5.62	ng	# 1
33) 4-Chloroaniline	8.16	127	8194	2.21	ng	# 1
47) 2-Nitroaniline	9.39	65	7974	5.10	ng	# 30
50) 2,6-Dinitrotoluene	9.55	165	7354	4.94	ng	# 1
53) 2,4-Dinitrophenol	10.01	184	525	8.75	ng	# 1
55) 4-Nitrophenol	10.06	139	6735	7.25	ng	90
56) 2,4-Dinitrotoluene	10.06	165	4551	2.43	ng	# 1
66) 4-Bromophenyl-phenylether	10.66	248	8790	5.46	ng	# 1

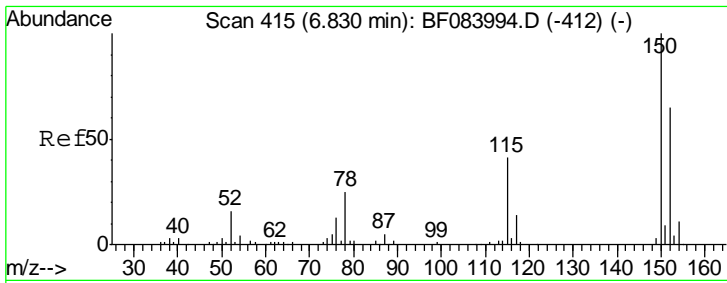
(#) = qualifier out of range (m) = manual integration (+) = signals summed

Data Path : Z:\HPCHEM1\BNA_F\DATA\BF122315\
 Data File : BF084050.D
 Acq On : 23 Dec 2015 23:05
 Operator : UM/SJ
 Sample : G4907-01
 Misc :
 ALS Vial : 35 Sample Multiplier: 1

Instrument :
 BNA_F
 ClientSampled :
 MW-14

Quant Time: Dec 24 00:39:49 2015
 Quant Method : Z:\HPCHEM1\BNA_F\METHODS\8270-BF122215.M
 Quant Title : ASP BNA STANDARDS FOR 5 POINT CALIBRATION
 QLast Update : Tue Dec 22 18:54:09 2015
 Response via : Initial Calibration

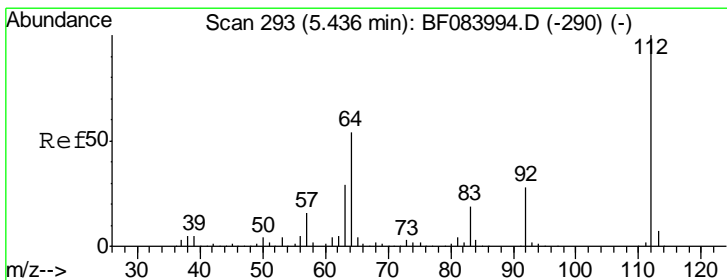
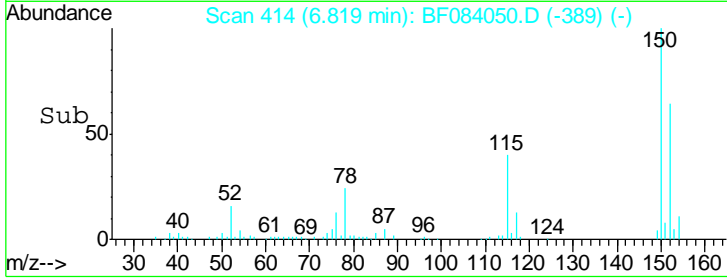
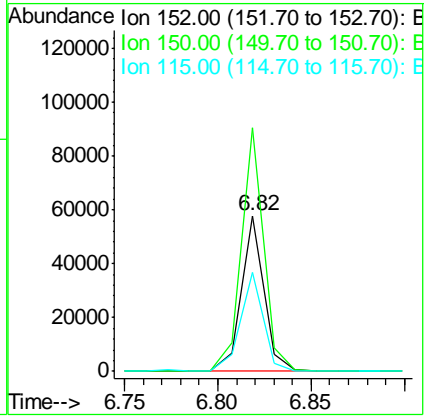
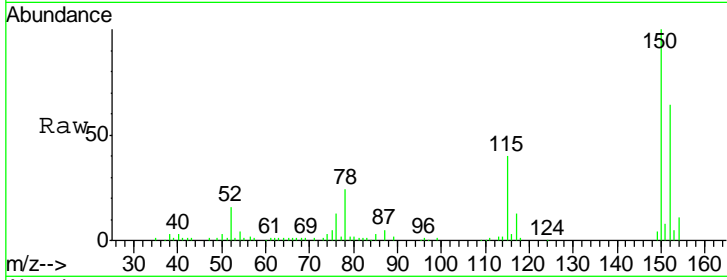




#1
 1,4-Dichlorobenzene-d4
 Concen: 20.00 ng
 RT: 6.82 min Scan# 414
 Delta R.T. -0.01 min
 Lab File: BF084050.D
 Acq: 23 Dec 2015 23:05

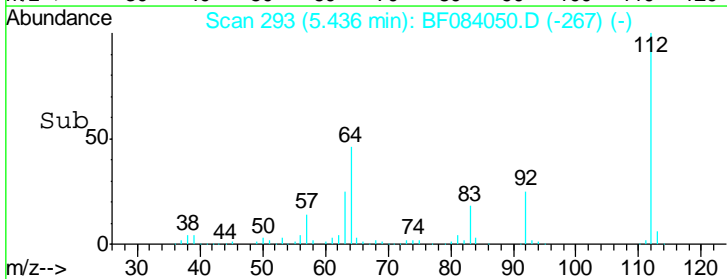
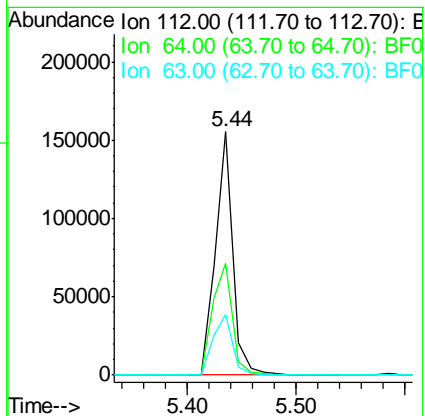
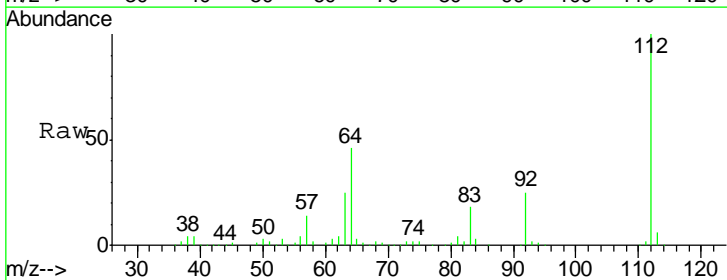
Instrument :
 BNA_F
ClientSampled :
 MW-14

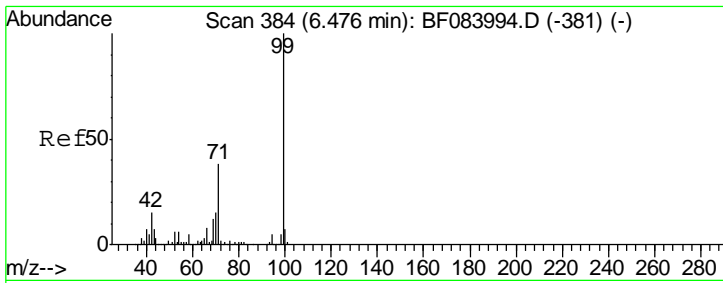
Tgt Ion	Resp	Lower	Upper
152	48867		
150	156.6	123.0	184.4
115	63.3	51.4	77.2



#5
 2-Fluorophenol
 Concen: 60.98 ng
 RT: 5.44 min Scan# 293
 Delta R.T. 0.00 min
 Lab File: BF084050.D
 Acq: 23 Dec 2015 23:05

Tgt Ion	Resp	Lower	Upper
112	174769		
64	45.7	36.6	55.0
63	24.8	19.4	29.0

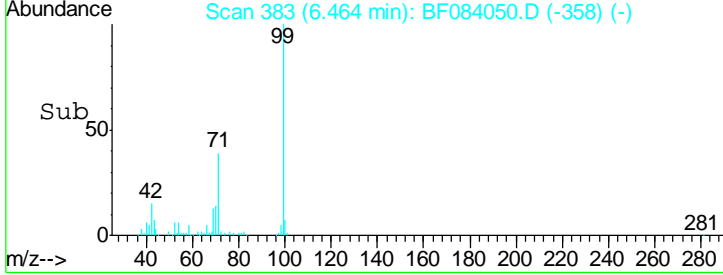
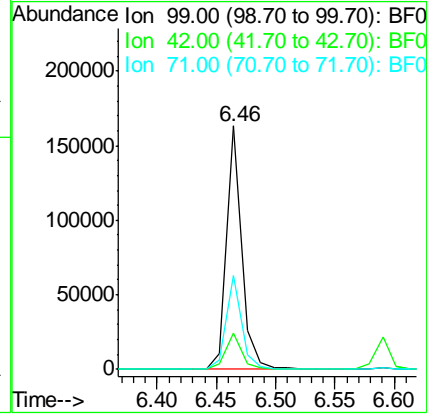
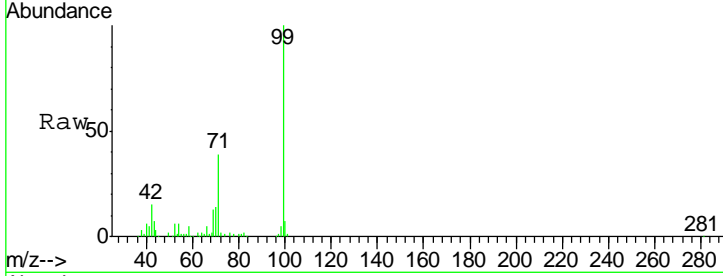




#7
 Phenol-d6
 Concen: 42.31 ng
 RT: 6.46 min Scan# 383
 Delta R.T. -0.01 min
 Lab File: BF084050.D
 Acq: 23 Dec 2015 23:05

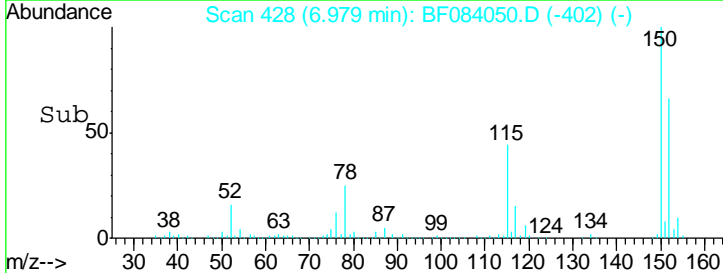
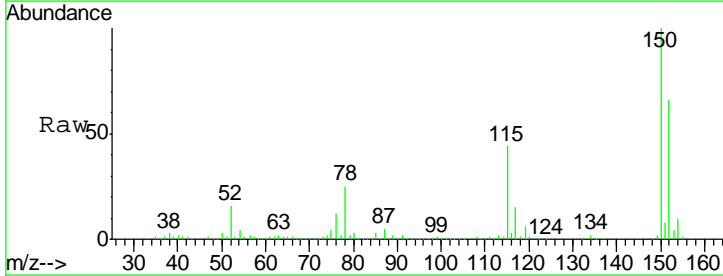
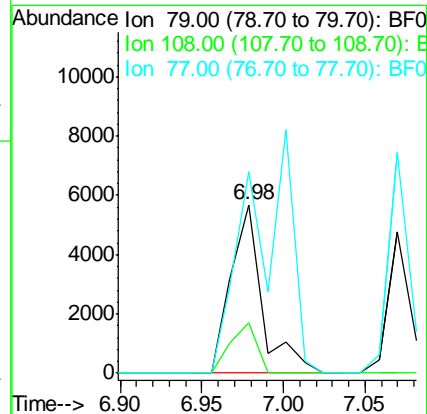
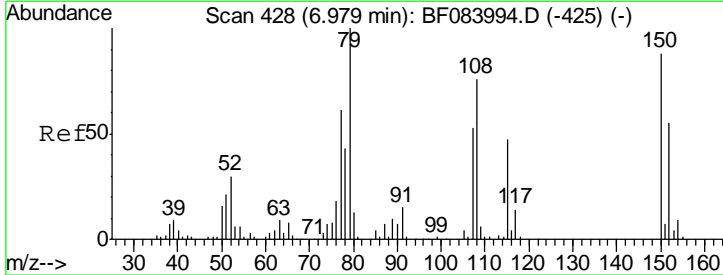
Instrument :
 BNA_F
 ClientSampled :
 MW-14

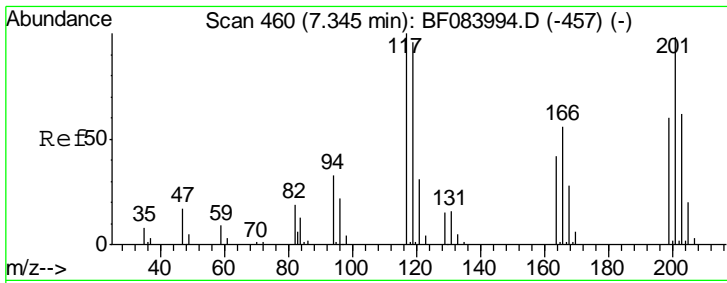
Tgt Ion	Resp	Lower	Upper
99	142585		
42	15.1	12.8	19.2
71	38.5	30.9	46.3



#15
 Benzyl Alcohol
 Concen: 2.82 ng
 RT: 6.98 min Scan# 428
 Delta R.T. -0.00 min
 Lab File: BF084050.D
 Acq: 23 Dec 2015 23:05

Tgt Ion	Resp	Lower	Upper
79	7478		
108	29.9	69.0	103.4#
77	119.7	50.0	75.0#



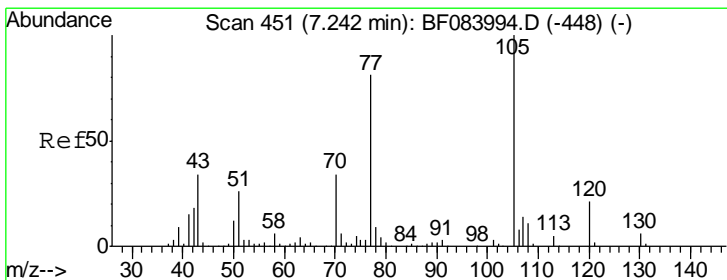
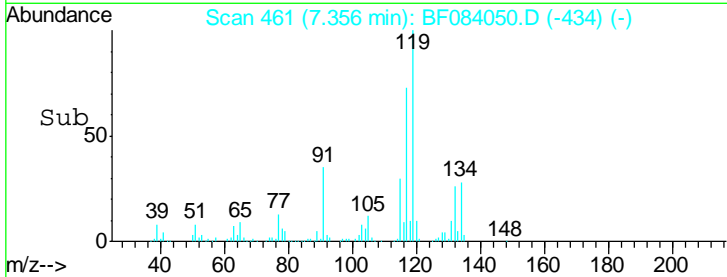
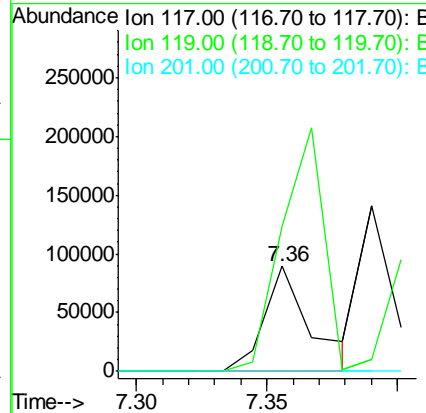
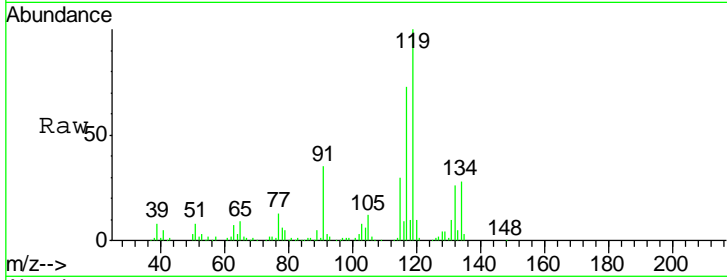


#18
 Hexachloroethane
 Concen: 83.54 ng
 RT: 7.36 min Scan# 461
 Delta R.T. 0.01 min
 Lab File: BF084050.D
 Acq: 23 Dec 2015 23:05

Instrument :
 BNA_F
ClientSampled :
 MW-14

Tgt Ion: 117 Resp: 109701

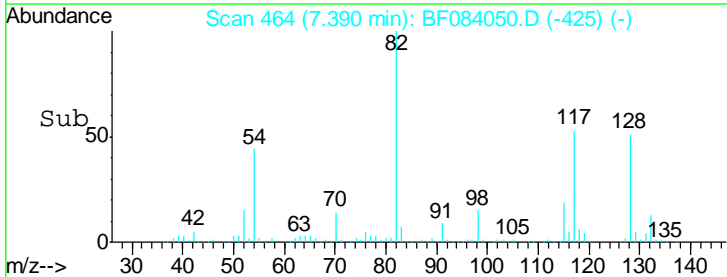
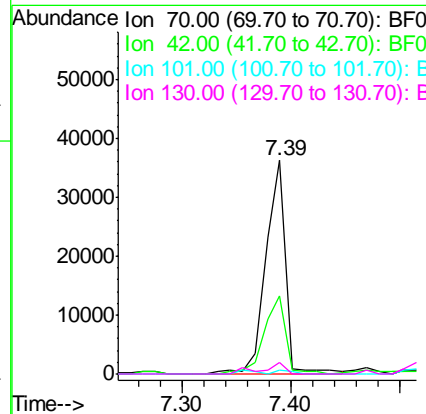
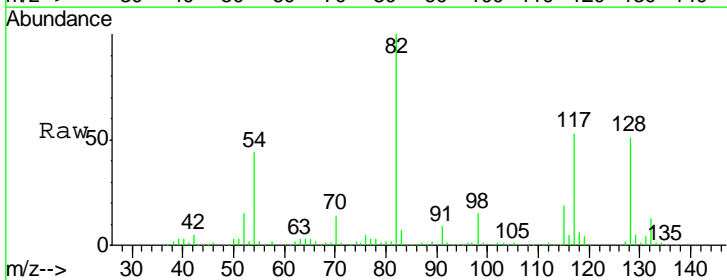
Ion	Ratio	Lower	Upper
117	100		
119	137.8	77.4	116.0#
201	0.0	68.6	103.0#

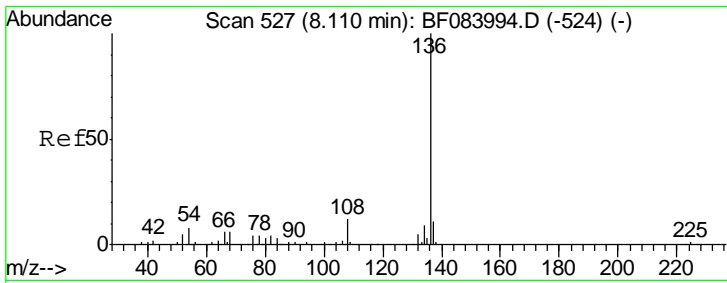


#19
 n-Nitroso-di-n-propylamine
 Concen: 22.76 ng
 RT: 7.39 min Scan# 464
 Delta R.T. 0.15 min
 Lab File: BF084050.D
 Acq: 23 Dec 2015 23:05

Tgt Ion: 70 Resp: 46478

Ion	Ratio	Lower	Upper
70	100		
42	36.9	33.3	49.9
101	1.9	9.3	13.9#
130	5.1	23.4	35.0#

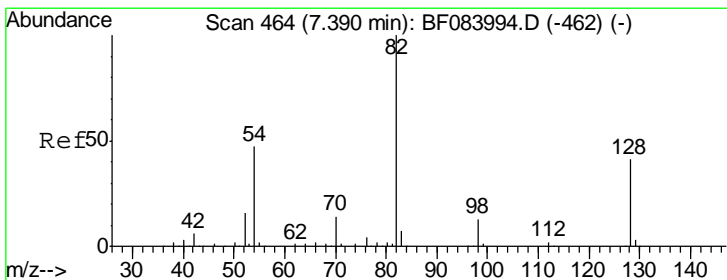
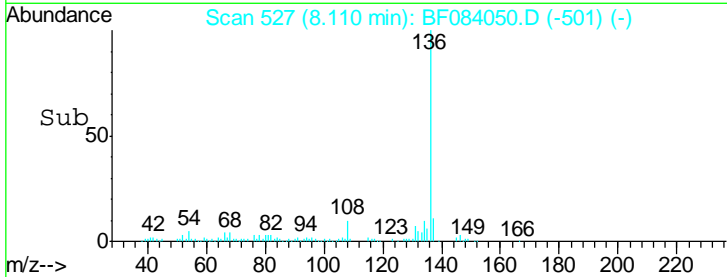
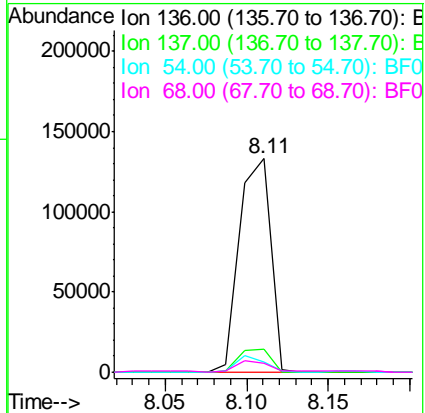
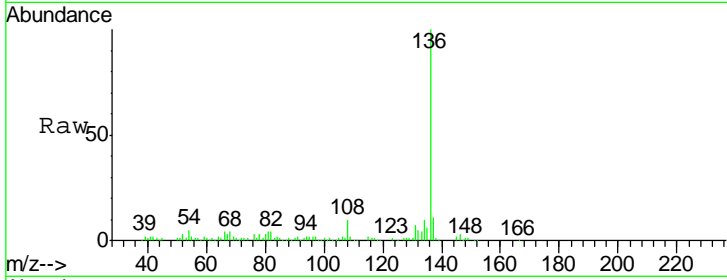




#21
 Naphthalene-d8
 Concen: 20.00 ng
 RT: 8.11 min Scan# 527
 Delta R.T. -0.00 min
 Lab File: BF084050.D
 Acq: 23 Dec 2015 23:05

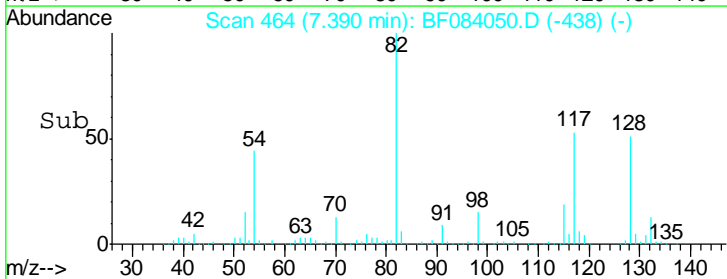
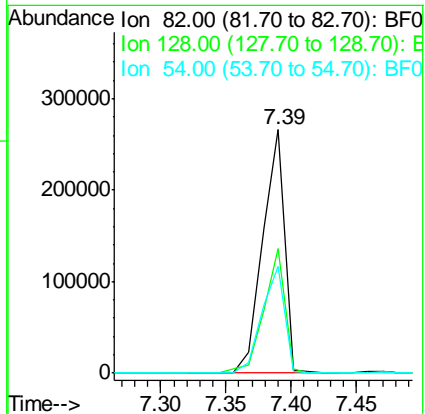
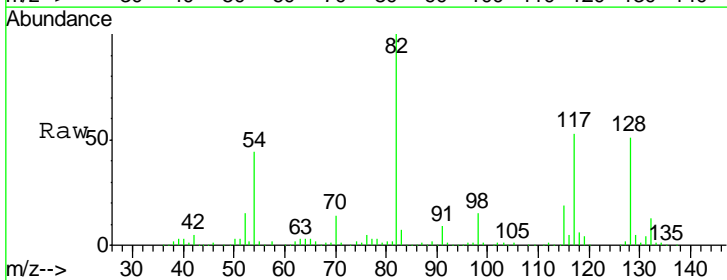
Instrument :
 BNA_F
ClientSampled :
 MW-14

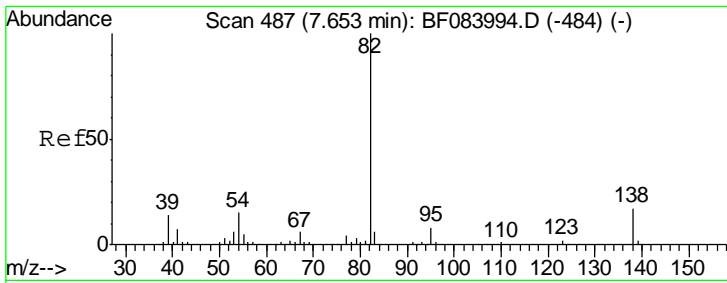
Tgt Ion	Resp	Lower	Upper
136	177675		
137	10.6	8.7	13.1
54	4.6	5.8	8.8#
68	4.0	4.2	6.2#



#23
 Nitrobenzene-d5
 Concen: 108.26 ng
 RT: 7.39 min Scan# 464
 Delta R.T. -0.00 min
 Lab File: BF084050.D
 Acq: 23 Dec 2015 23:05

Tgt Ion	Resp	Lower	Upper
82	313118		
128	51.1	34.6	51.8
54	43.6	38.4	57.6

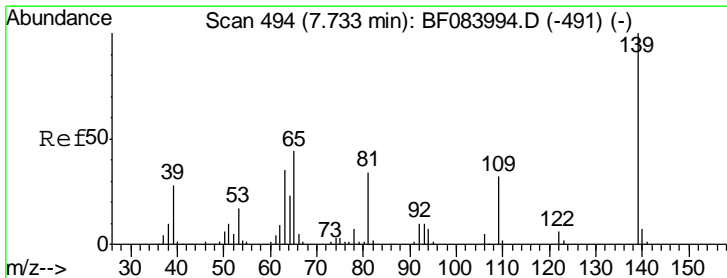
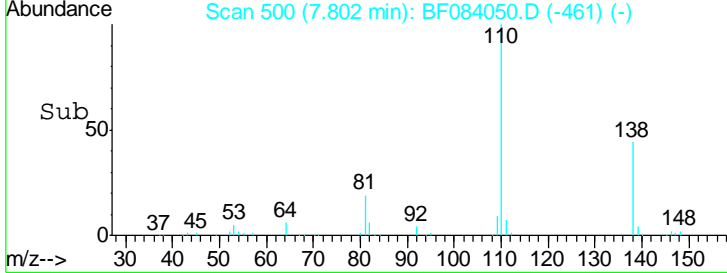
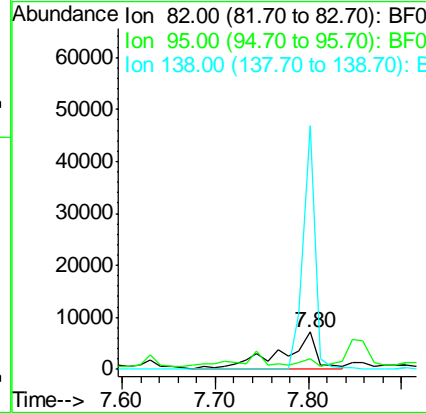
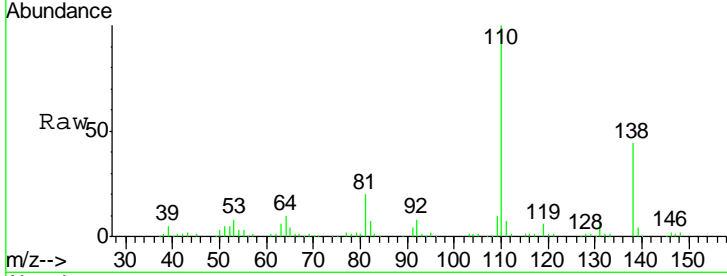




#25
 Isophorone
 Concen: 3.57 ng
 RT: 7.80 min Scan# 500
 Delta R.T. 0.15 min
 Lab File: BF084050.D
 Acq: 23 Dec 2015 23:05

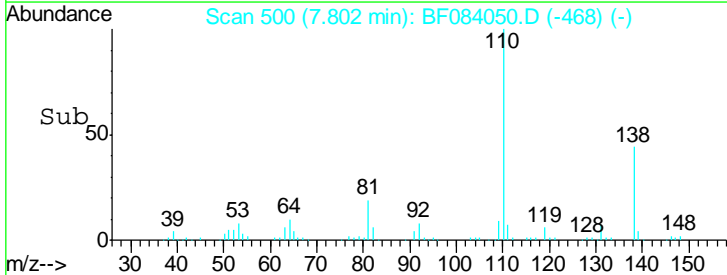
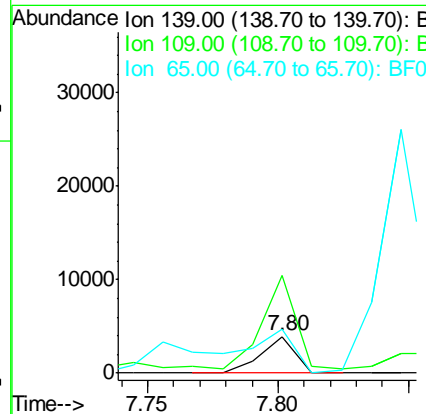
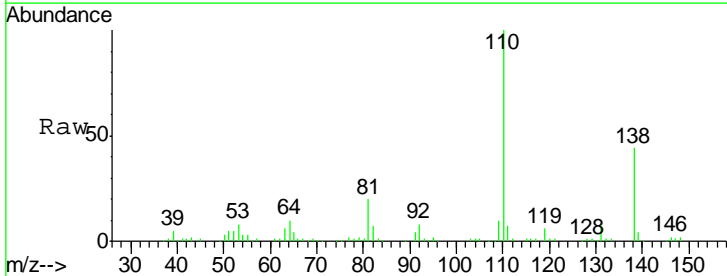
Instrument :
 BNA_F
 ClientSampleID :
 MW-14

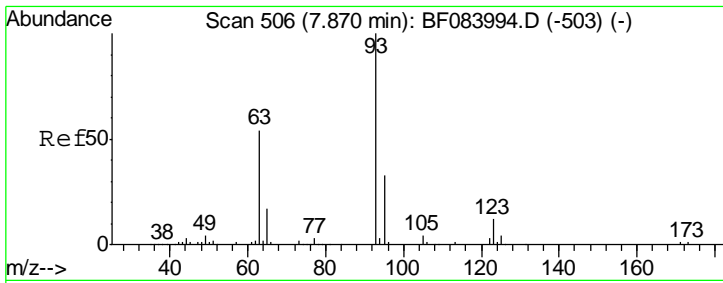
Tgt Ion	Resp	Lower	Upper
82	19539		
95	29.2	6.6	10.0#
138	650.6	13.6	20.4#



#26
 2-Nitrophenol
 Concen: 2.22 ng
 RT: 7.80 min Scan# 500
 Delta R.T. 0.07 min
 Lab File: BF084050.D
 Acq: 23 Dec 2015 23:05

Tgt Ion	Resp	Lower	Upper
139	3557		
109	264.8	25.4	38.2#
65	117.9	32.3	48.5#

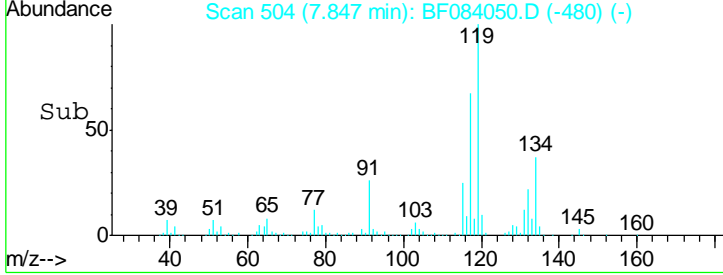
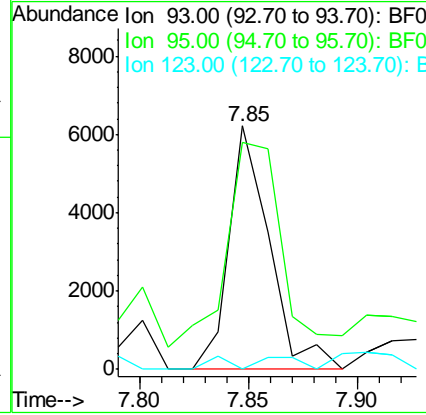
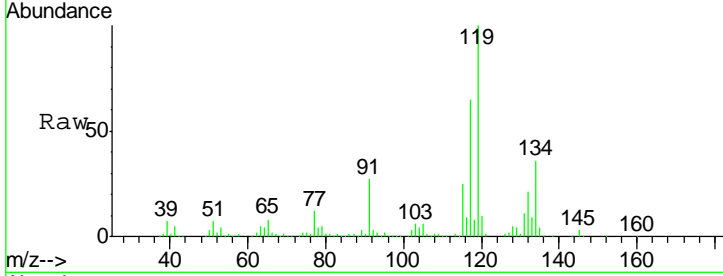




#28
 bis(2-Chloroethoxy)methane
 Concen: 2.36 ng
 RT: 7.85 min Scan# 504
 Delta R.T. -0.02 min
 Lab File: BF084050.D
 Acq: 23 Dec 2015 23:05

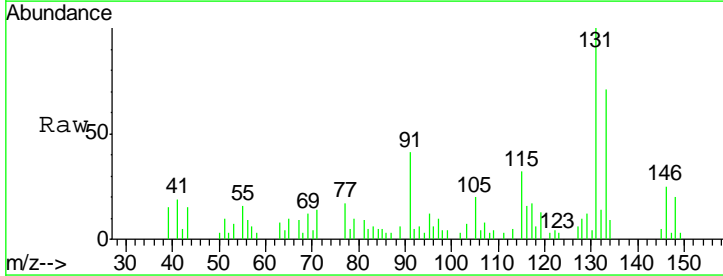
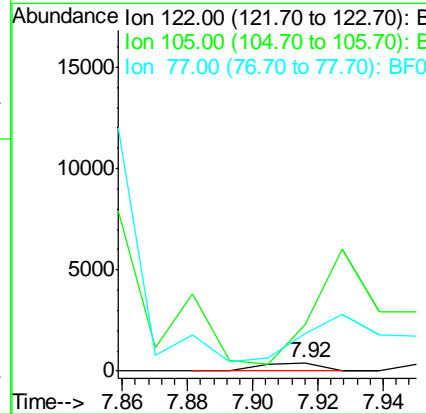
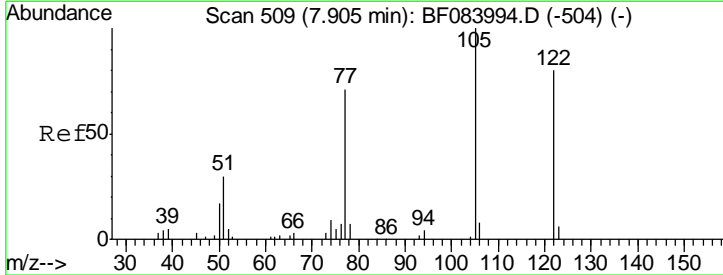
Instrument :
 BNA_F
 ClientSampled :
 MW-14

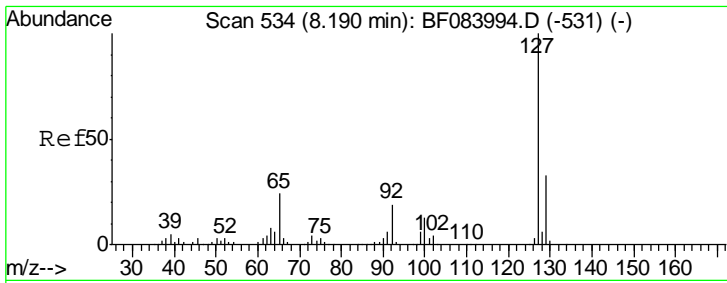
Tgt Ion	Resp	Lower	Upper
93	100		
95	93.5	25.8	38.6#
123	0.0	8.6	12.8#



#32
 Benzoic acid
 Concen: 5.62 ng
 RT: 7.92 min Scan# 510
 Delta R.T. 0.01 min
 Lab File: BF084050.D
 Acq: 23 Dec 2015 23:05

Tgt Ion	Resp	Lower	Upper
122	100		
105	544.4	100.3	140.3#
77	447.5	63.5	103.5#

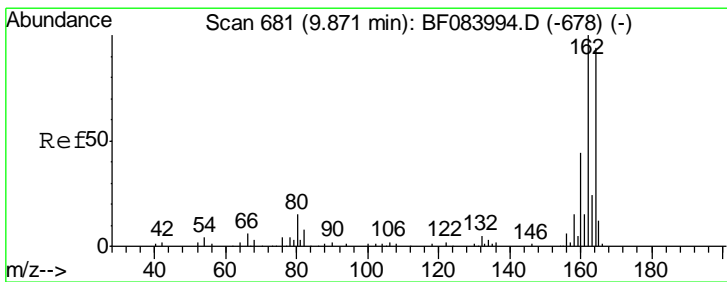
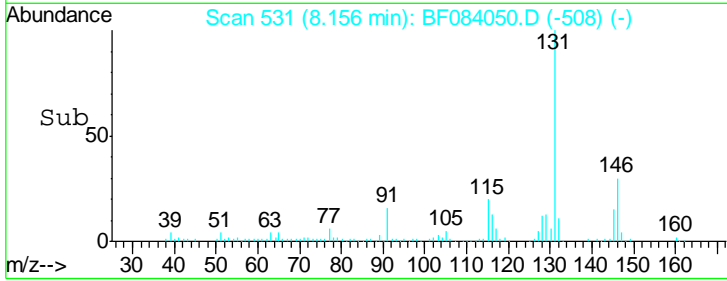
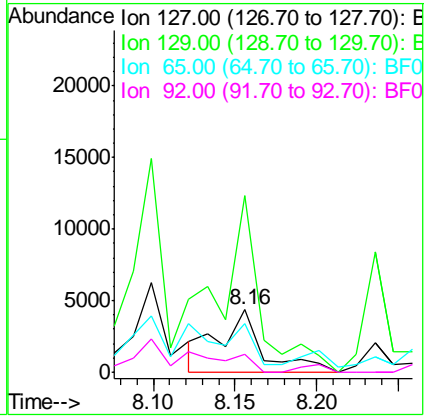
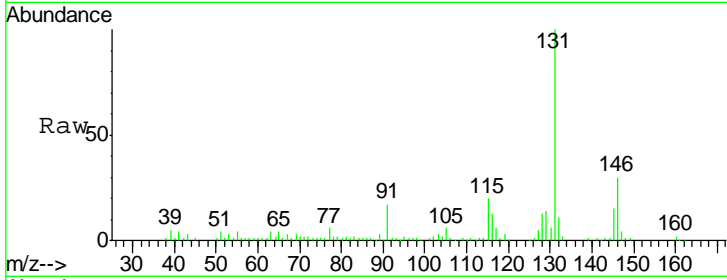




#33
 4-Chloroaniline
 Concen: 2.21 ng
 RT: 8.16 min Scan# 531
 Delta R.T. -0.03 min
 Lab File: BF084050.D
 Acq: 23 Dec 2015 23:05

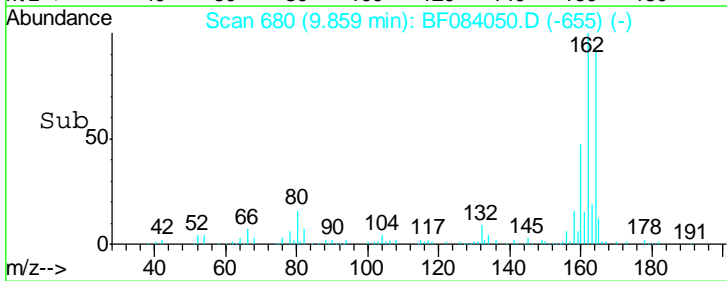
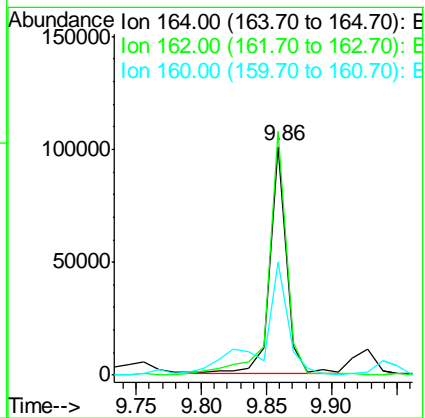
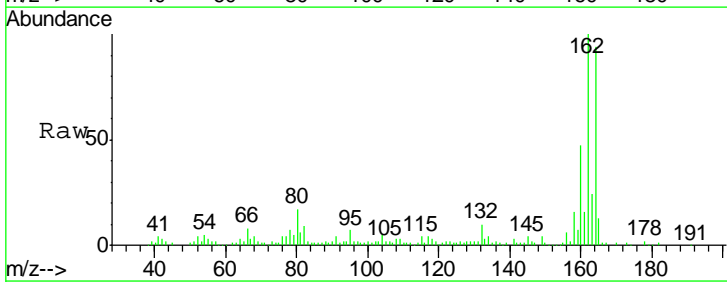
Instrument :
 BNA_F
 ClientSampled :
 MW-14

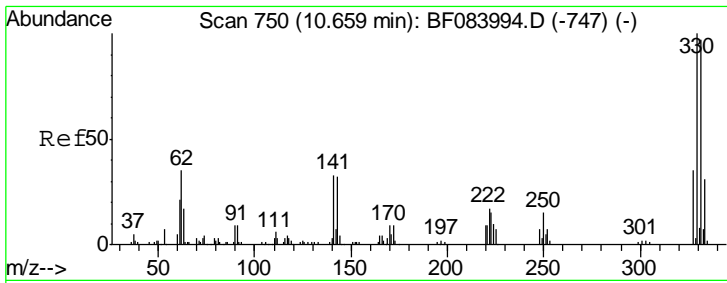
Tgt Ion	Resp	Lower	Upper
127	100		
129	282.8	26.5	39.7#
65	77.7	27.2	40.8#
92	29.4	17.7	26.5#



#38
 Acenaphthene-d10
 Concen: 20.00 ng
 RT: 9.86 min Scan# 680
 Delta R.T. -0.01 min
 Lab File: BF084050.D
 Acq: 23 Dec 2015 23:05

Tgt Ion	Resp	Lower	Upper
164	100		
162	106.6	85.1	127.7
160	49.7	37.5	56.3

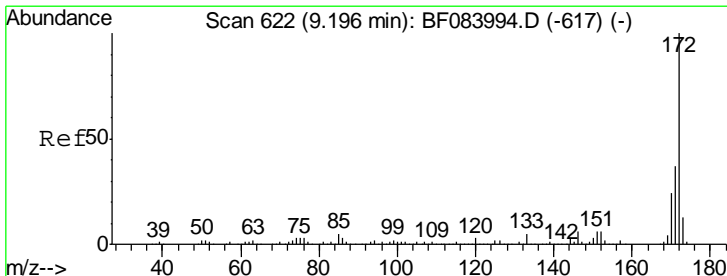
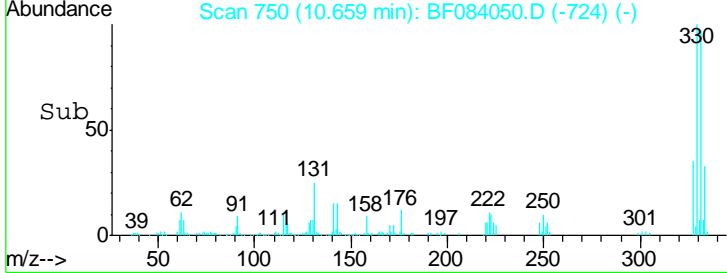
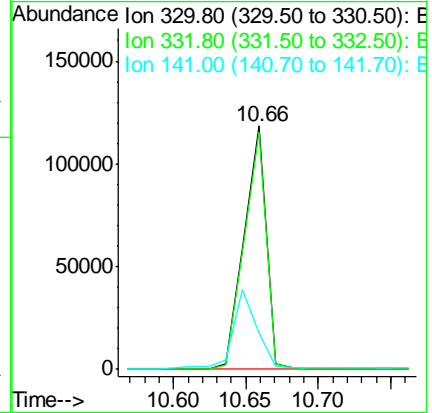
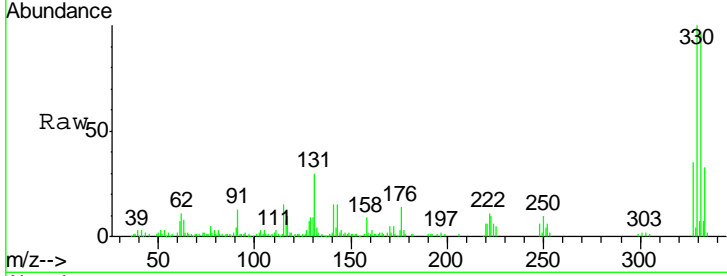




#41
 2,4,6-Tribromophenol
 Concen: 144.80 ng
 RT: 10.66 min Scan# 750
 Delta R.T. -0.00 min
 Lab File: BF084050.D
 Acq: 23 Dec 2015 23:05

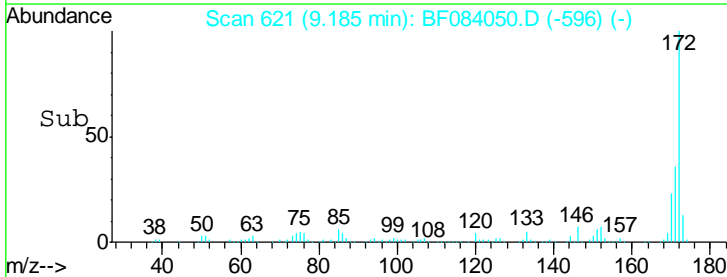
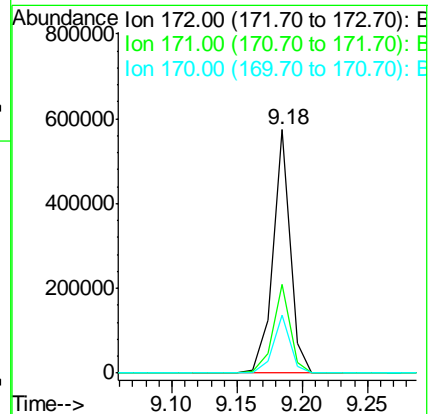
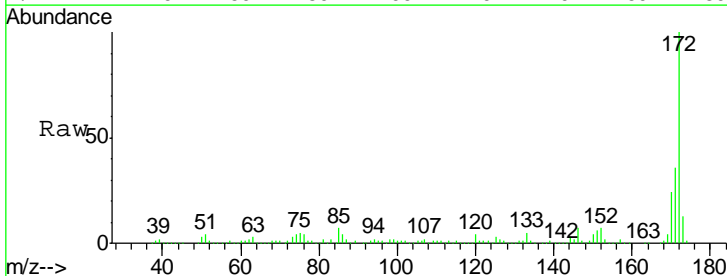
Instrument :
 BNA_F
 ClientSampleId :
 MW-14

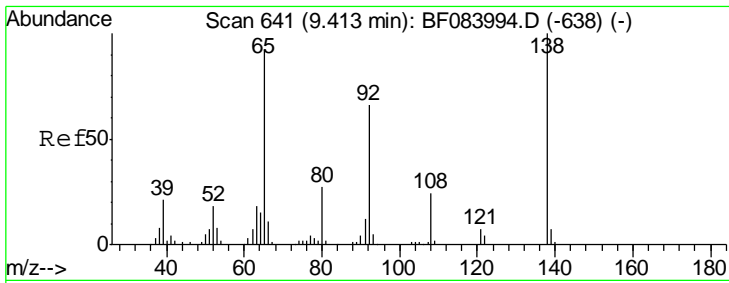
Tgt Ion	Resp	Lower	Upper
330	125591		
332	97.1	76.6	114.8
141	34.5	27.8	41.6



#44
 2-Fluorobiphenyl
 Concen: 79.76 ng
 RT: 9.18 min Scan# 621
 Delta R.T. -0.01 min
 Lab File: BF084050.D
 Acq: 23 Dec 2015 23:05

Tgt Ion	Resp	Lower	Upper
172	534389		
171	36.4	28.9	43.3
170	23.6	18.6	27.8

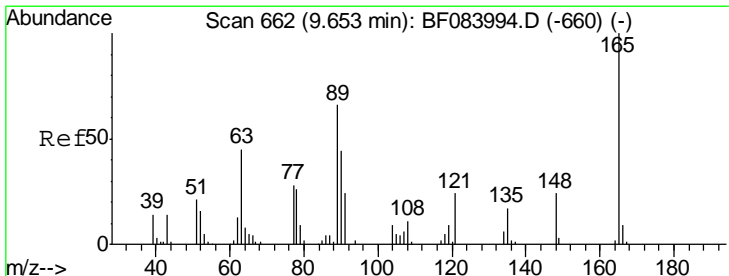
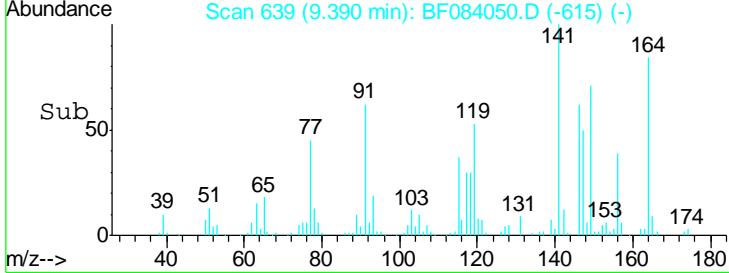
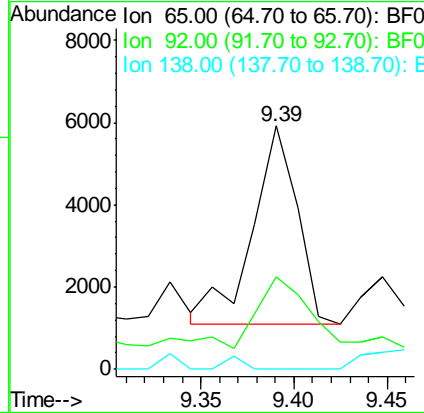
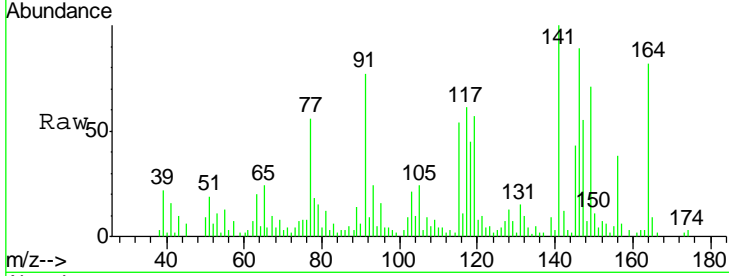




#47
 2-Nitroaniline
 Concen: 5.10 ng
 RT: 9.39 min Scan# 639
 Delta R.T. -0.02 min
 Lab File: BF084050.D
 Acq: 23 Dec 2015 23:05

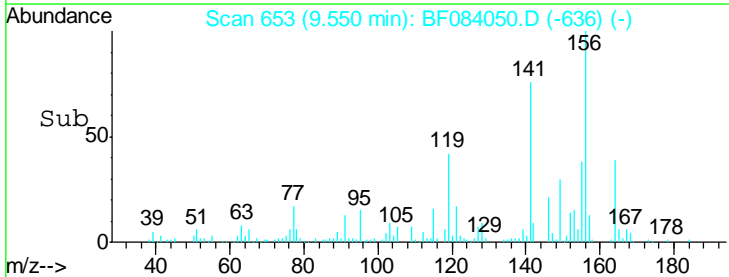
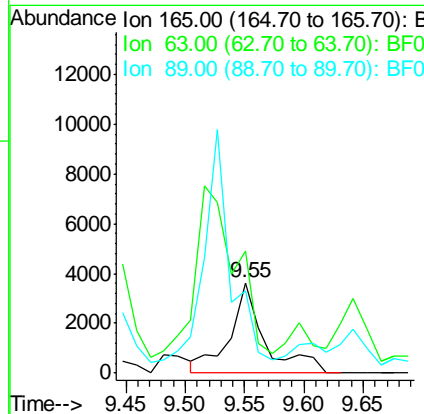
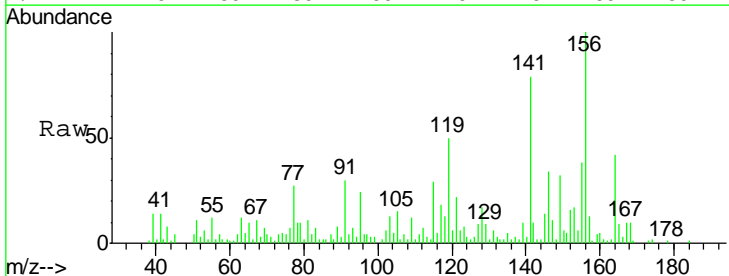
Instrument :
 BNA_F
 ClientSampled :
 MW-14

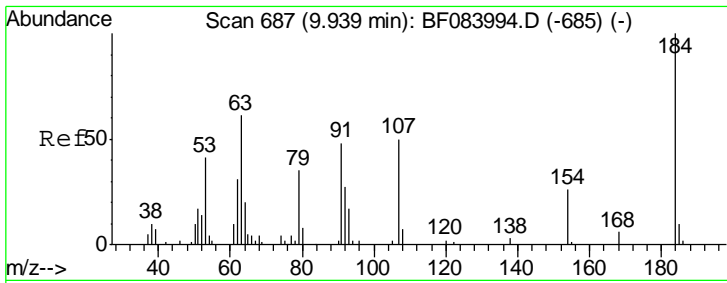
Tgt Ion	Resp	Lower	Upper
65	100		
92	38.1	53.4	80.2#
138	0.0	71.1	106.7#



#50
 2,6-Dinitrotoluene
 Concen: 4.94 ng
 RT: 9.55 min Scan# 653
 Delta R.T. -0.10 min
 Lab File: BF084050.D
 Acq: 23 Dec 2015 23:05

Tgt Ion	Resp	Lower	Upper
165	100		
63	135.2	28.8	43.2#
89	91.6	35.1	52.7#

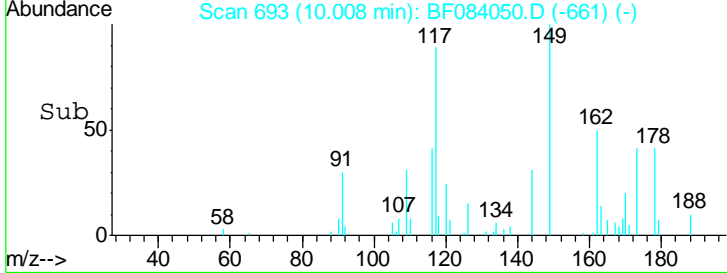
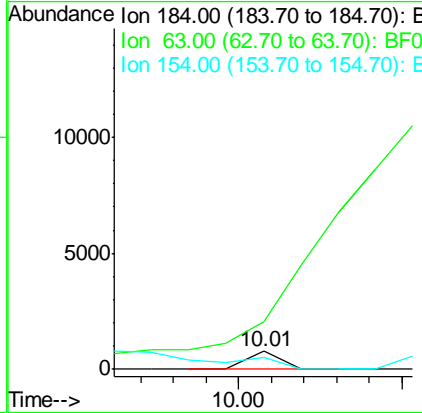
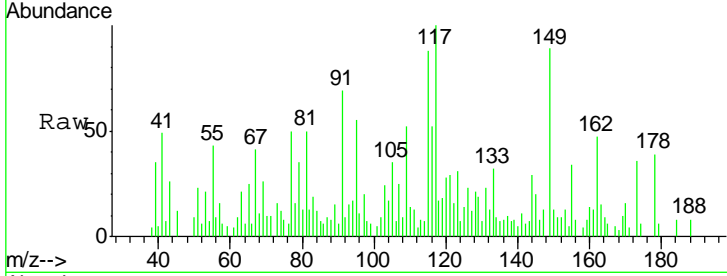




#53
 2,4-Dinitrophenol
 Concen: 8.75 ng
 RT: 10.01 min Scan# 693
 Delta R.T. 0.07 min
 Lab File: BF084050.D
 Acq: 23 Dec 2015 23:05

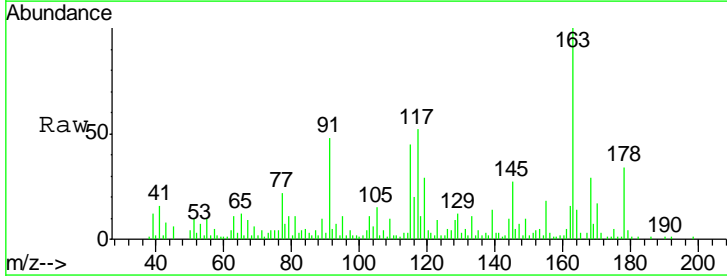
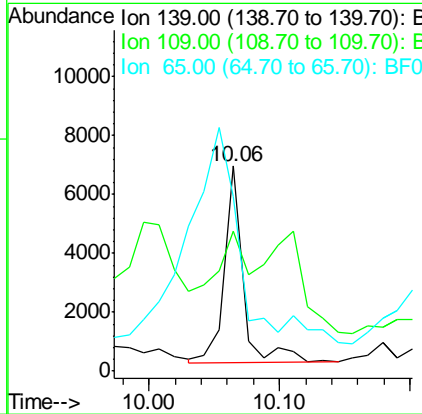
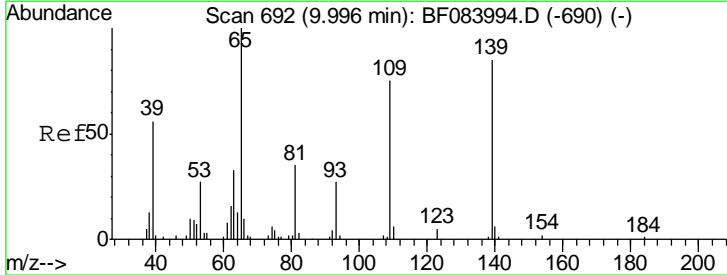
Instrument :
 BNA_F
ClientSampled :
 MW-14

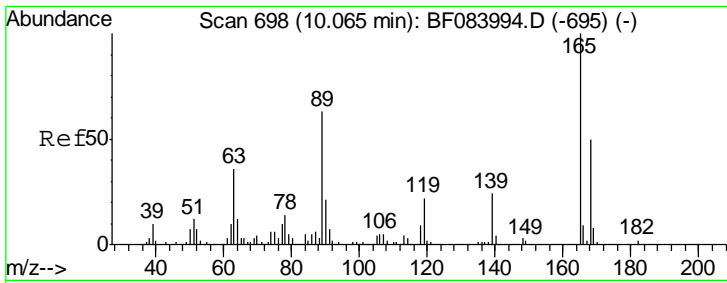
Tgt Ion	Resp	Lower	Upper
184	100		
63	267.3	43.1	64.7#
154	67.3	60.5	90.7



#55
 4-Nitrophenol
 Concen: 7.25 ng
 RT: 10.06 min Scan# 698
 Delta R.T. 0.07 min
 Lab File: BF084050.D
 Acq: 23 Dec 2015 23:05

Tgt Ion	Resp	Lower	Upper
139	100		
109	68.1	58.5	98.5
65	85.1	57.6	97.6

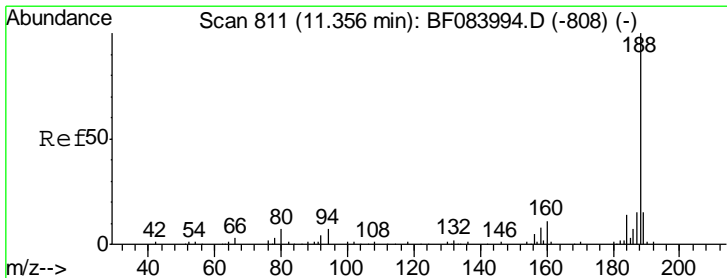
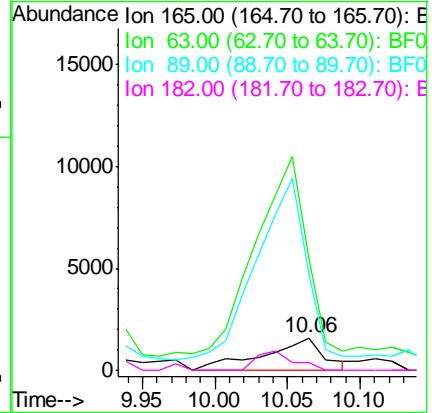
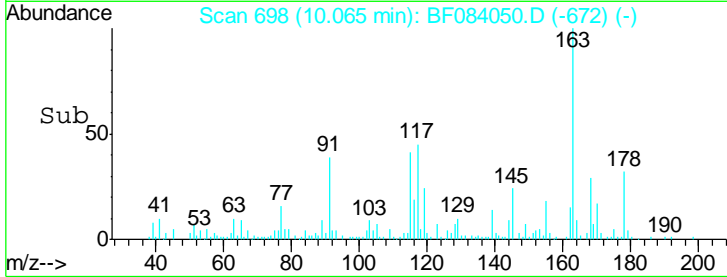
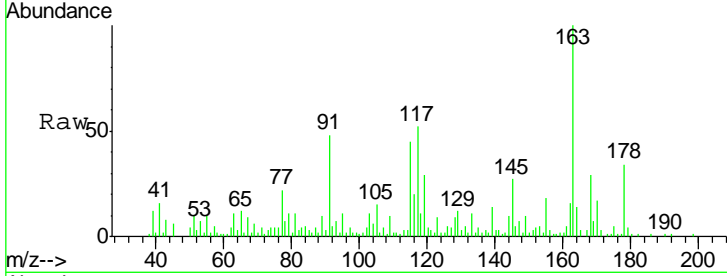




#56
 2,4-Dinitrotoluene
 Concen: 2.43 ng
 RT: 10.06 min Scan# 698
 Delta R.T. -0.00 min
 Lab File: BF084050.D
 Acq: 23 Dec 2015 23:05

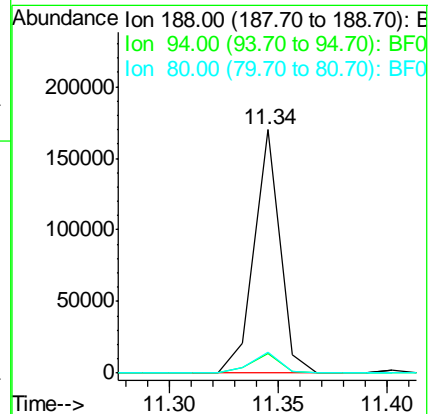
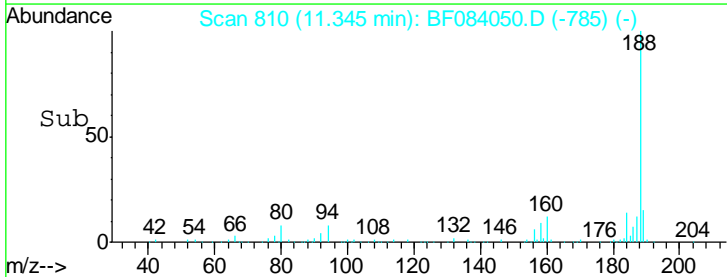
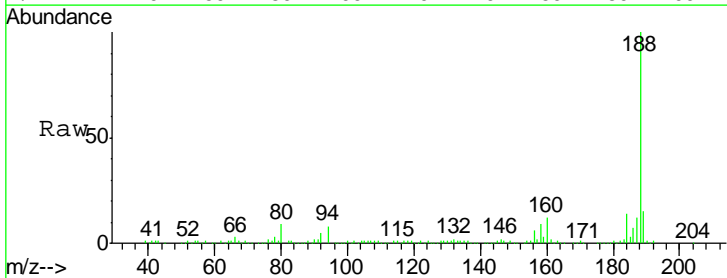
Instrument :
 BNA_F
 ClientSampled :
 MW-14

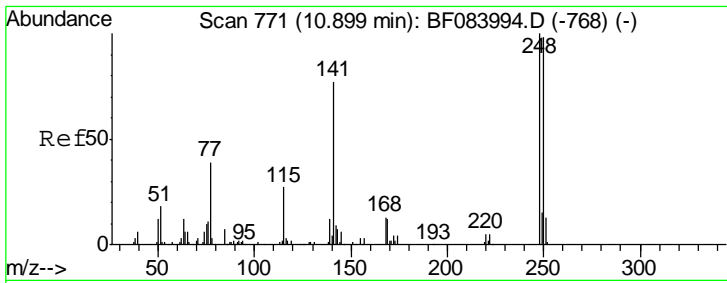
Tgt Ion	Resp	Lower	Upper
165	4551		
63	347.1	36.7	55.1#
89	299.9	61.9	92.9#
182	24.3	2.0	3.0#



#63
 Phenanthrene-d10
 Concen: 20.00 ng
 RT: 11.34 min Scan# 810
 Delta R.T. -0.01 min
 Lab File: BF084050.D
 Acq: 23 Dec 2015 23:05

Tgt Ion	Resp	Lower	Upper
188	140320		
94	8.2	9.0	13.4#
80	8.7	9.6	14.4#

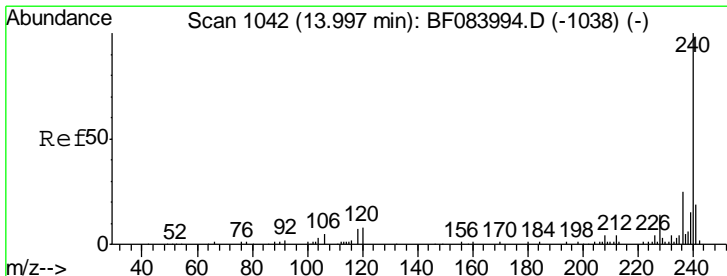
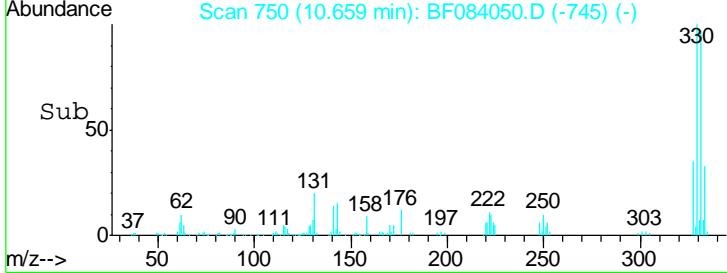
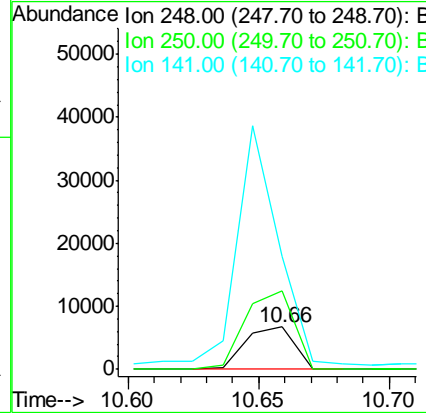
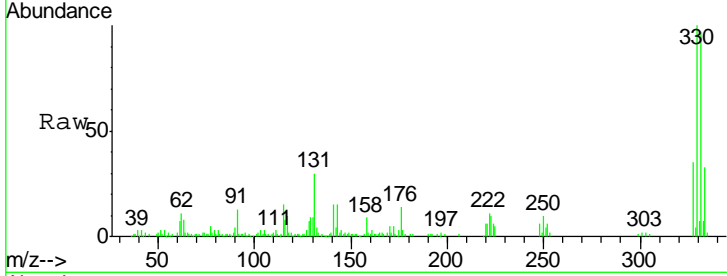




#66
 4-Bromophenyl-phenylether
 Concen: 5.46 ng
 RT: 10.66 min Scan# 750
 Delta R.T. -0.24 min
 Lab File: BF084050.D
 Acq: 23 Dec 2015 23:05

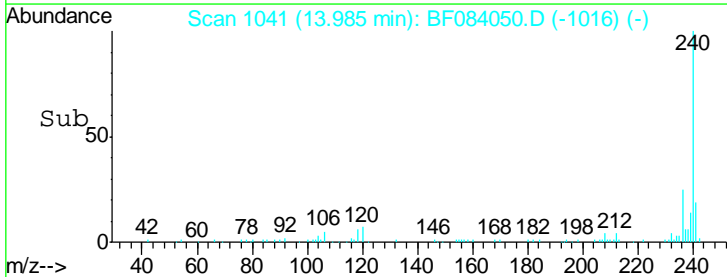
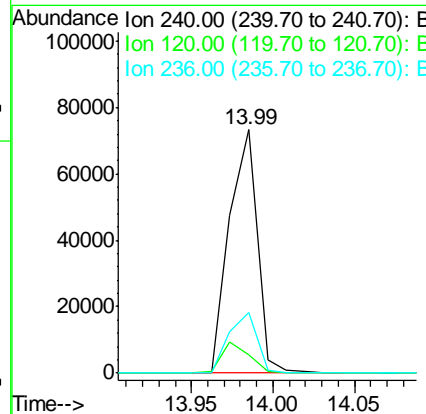
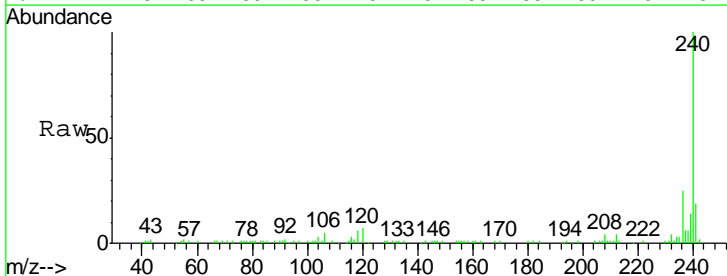
Instrument :
 BNA_F
 ClientSampled :
 MW-14

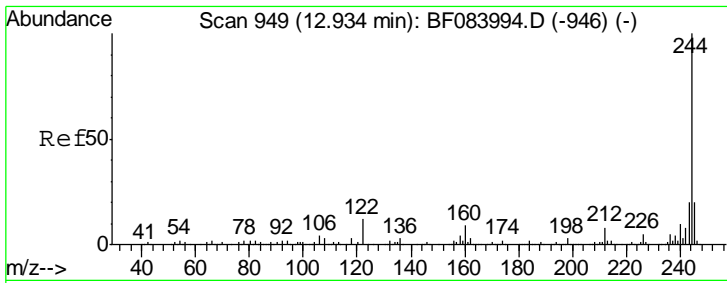
Tgt Ion	Resp	Lower	Upper
248	100		
250	185.5	78.4	117.6#
141	266.4	44.0	66.0#



#75
 Chrysene-d12
 Concen: 20.00 ng
 RT: 13.99 min Scan# 1041
 Delta R.T. -0.01 min
 Lab File: BF084050.D
 Acq: 23 Dec 2015 23:05

Tgt Ion	Resp	Lower	Upper
240	100		
120	7.5	9.5	14.3#
236	24.7	20.6	31.0

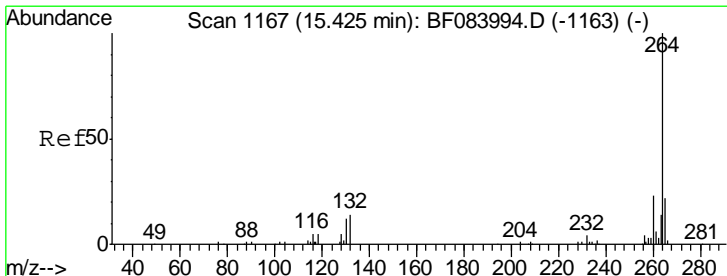
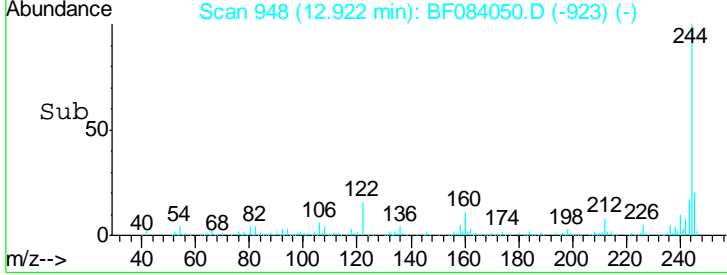
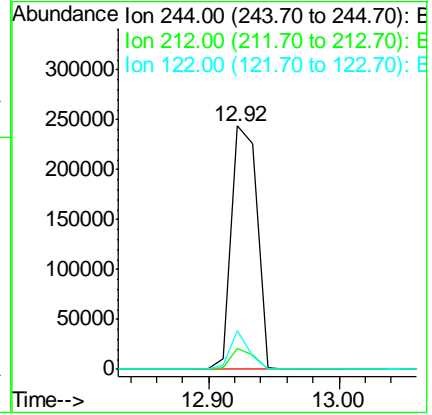
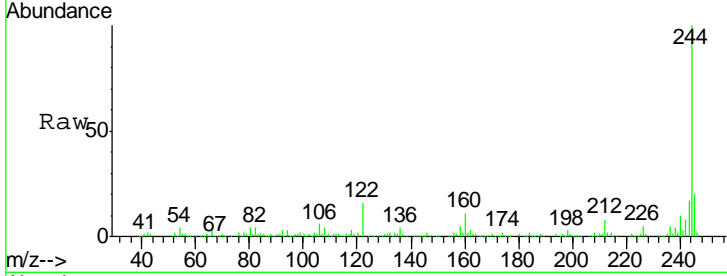




#78
 Terphenyl-d14
 Concen: 91.60 ng
 RT: 12.92 min Scan# 948
 Delta R.T. -0.01 min
 Lab File: BF084050.D
 Acq: 23 Dec 2015 23:05

Instrument :
 BNA_F
ClientSampled :
 MW-14

Tgt Ion	Resp	Lower	Upper
244	100		
212	8.4	5.7	8.5
122	16.1	7.4	11.0



#86
 Perylene-d12
 Concen: 20.00 ng
 RT: 15.41 min Scan# 1166
 Delta R.T. -0.01 min
 Lab File: BF084050.D
 Acq: 23 Dec 2015 23:05

Tgt Ion	Resp	Lower	Upper
264	100		
260	22.6	19.4	29.2
265	20.2	17.8	26.6

