

Data Path : Z:\HPCHEM1\BNA F\DATA\BF122315\
 Data File : BF084056.D
 Acq On : 24 Dec 2015 1:55
 Operator : UM/SJ
 Sample : G4907-07
 Misc :
 ALS Vial : 41 Sample Multiplier: 1

Instrument :
 BNA_F
 ClientSampleId :
 MW-02

Quant Time: Dec 24 04:58:28 2015
 Quant Method : Z:\HPCHEM1\BNA F\METHODS\8270-BF122215.M
 Quant Title : ASP BNA STANDARDS FOR 5 POINT CALIBRATION
 QLast Update : Tue Dec 22 18:54:09 2015
 Response via : Initial Calibration

| Internal Standards | R.T. | QIon | Response | Conc | Units | Dev(Min) |
|-----------------------------|-------|------|----------|-------|-------|----------|
| 1) 1,4-Dichlorobenzene-d4 | 6.82 | 152 | 54125 | 20.00 | ng | -0.01 |
| 21) Naphthalene-d8 | 8.11 | 136 | 200029 | 20.00 | ng | 0.00 |
| 38) Acenaphthene-d10 | 9.87 | 164 | 85575 | 20.00 | ng | 0.00 |
| 63) Phenanthrene-d10 | 11.36 | 188 | 137511 | 20.00 | ng | 0.00 |
| 75) Chrysene-d12 | 13.99 | 240 | 92498 | 20.00 | ng | -0.01 |
| 86) Perylene-d12 | 15.41 | 264 | 89147 | 20.00 | ng | -0.01 |
| System Monitoring Compounds | | | | | | |
| 5) 2-Fluorophenol | 5.45 | 112 | 80844 | 25.47 | ng | 0.01 |
| 7) Phenol-d6 | 6.49 | 99 | 67630 | 18.12 | ng | 0.01 |
| 23) Nitrobenzene-d5 | 7.39 | 82 | 158101 | 48.56 | ng | 0.00 |
| 41) 2,4,6-Tribromophenol | 10.66 | 330 | 48585 | 59.03 | ng | 0.00 |
| 44) 2-Fluorobiphenyl | 9.18 | 172 | 298523 | 46.95 | ng | -0.01 |
| 78) Terphenyl-d14 | 12.93 | 244 | 198328 | 51.13 | ng | 0.00 |

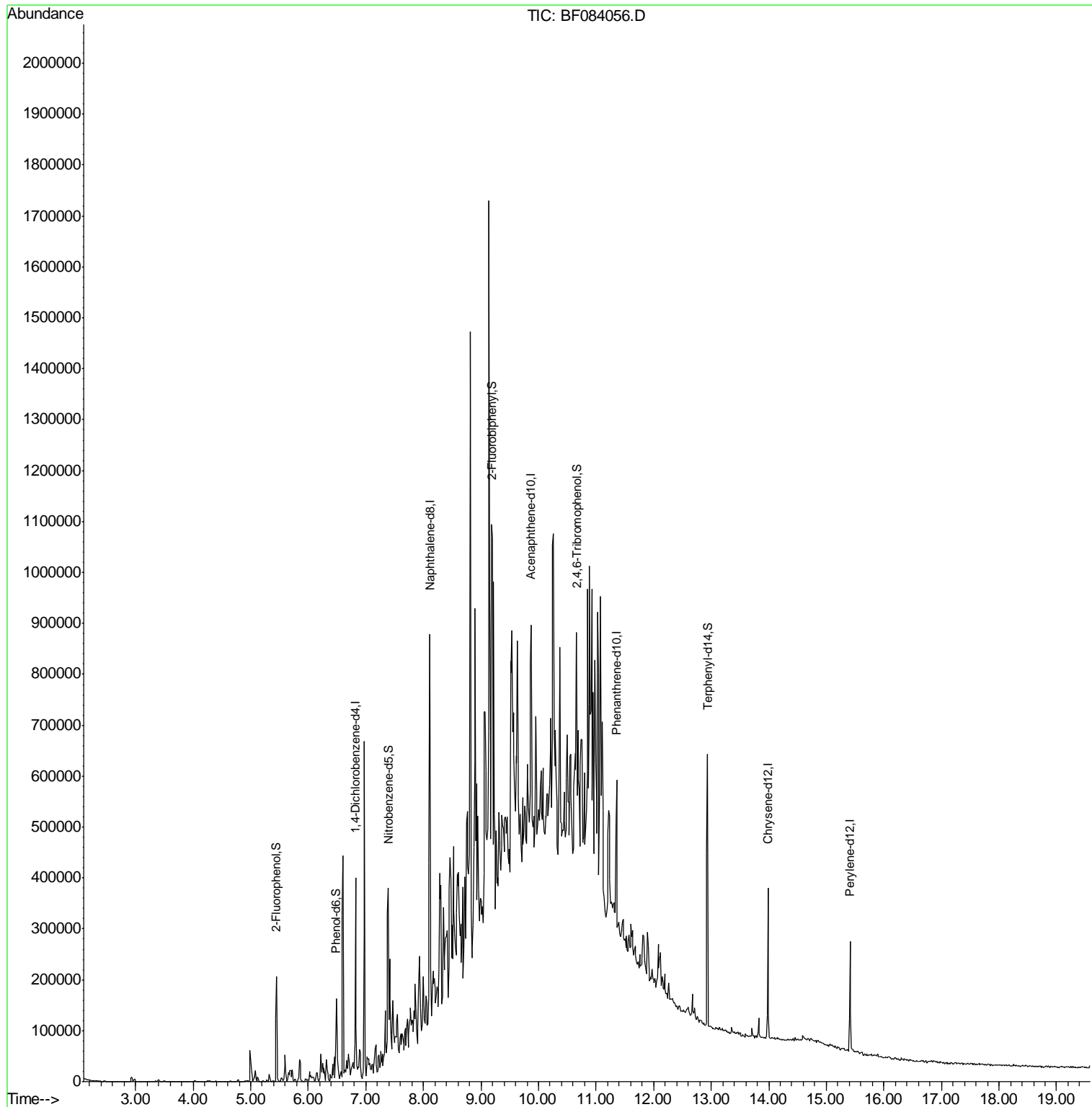
Target Compounds Qvalue

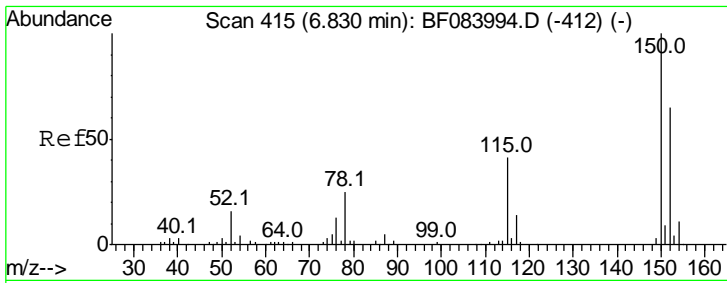
(#) = qualifier out of range (m) = manual integration (+) = signals summed

Data Path : Z:\HPCHEM1\BNA F\DATA\BF122315\
 Data File : BF084056.D
 Acq On : 24 Dec 2015 1:55
 Operator : UM/SJ
 Sample : G4907-07
 Misc :
 ALS Vial : 41 Sample Multiplier: 1

Instrument :
 BNA_F
 ClientSampled :
 MW-02

Quant Time: Dec 24 04:58:28 2015
 Quant Method : Z:\HPCHEM1\BNA F\METHODS\8270-BF122215.M
 Quant Title : ASP BNA STANDARDS FOR 5 POINT CALIBRATION
 QLast Update : Tue Dec 22 18:54:09 2015
 Response via : Initial Calibration

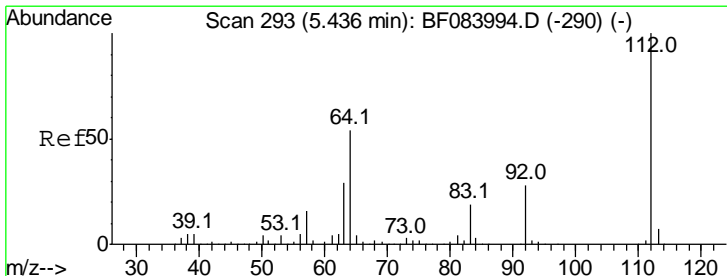
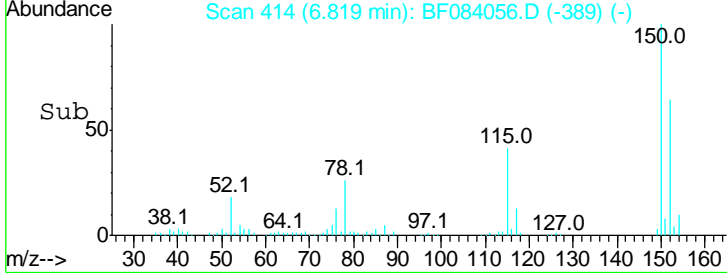
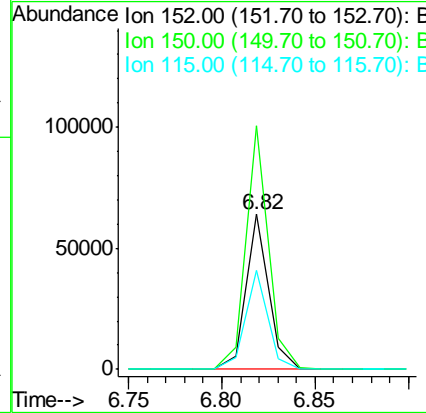
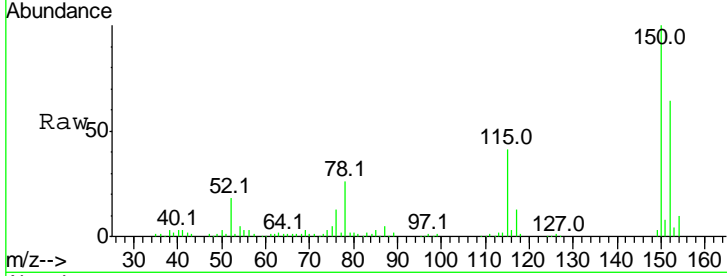




#1
 1,4-Dichlorobenzene-d4
 Concen: 20.00 ng
 RT: 6.82 min Scan# 414
 Delta R.T. -0.01 min
 Lab File: BF084056.D
 Acq: 24 Dec 2015 1:55

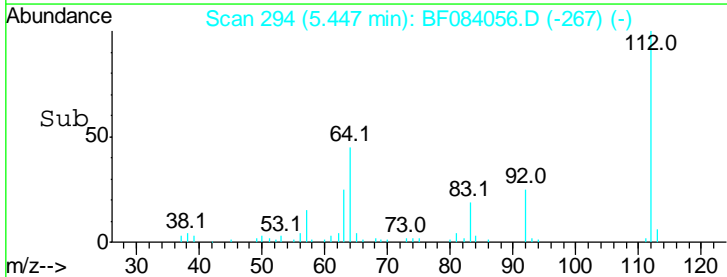
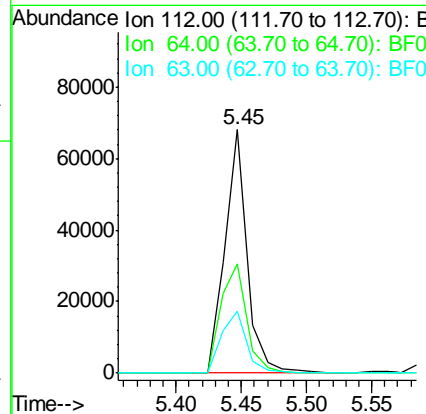
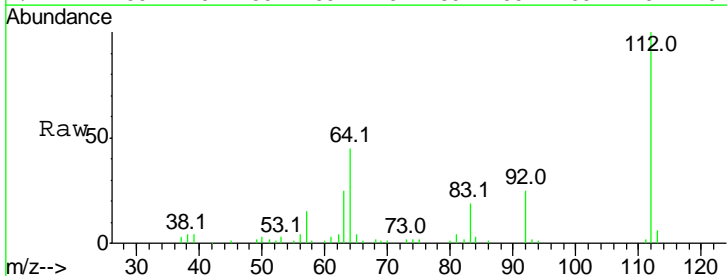
Instrument :
 BNA_F
ClientSampled :
 MW-02

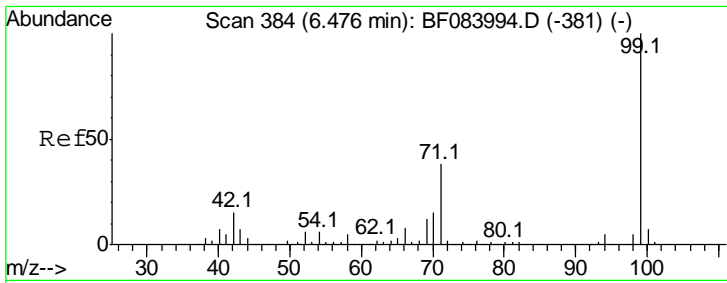
| Tgt Ion | Resp | Lower | Upper |
|---------|-------|-------|-------|
| 152 | 54125 | | |
| 152 | 100 | | |
| 150 | 156.9 | 123.0 | 184.4 |
| 115 | 63.9 | 51.4 | 77.2 |



#5
 2-Fluorophenol
 Concen: 25.47 ng
 RT: 5.45 min Scan# 294
 Delta R.T. 0.01 min
 Lab File: BF084056.D
 Acq: 24 Dec 2015 1:55

| Tgt Ion | Resp | Lower | Upper |
|---------|-------|-------|-------|
| 112 | 80844 | | |
| 112 | 100 | | |
| 64 | 45.0 | 36.6 | 55.0 |
| 63 | 25.2 | 19.4 | 29.0 |

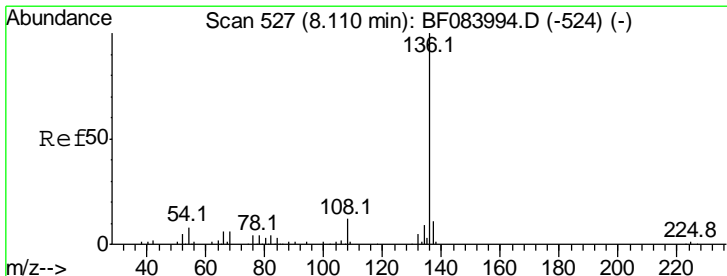
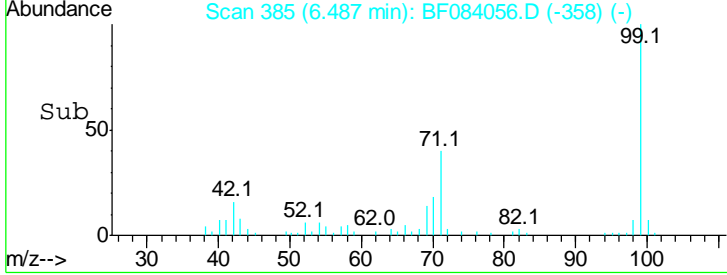
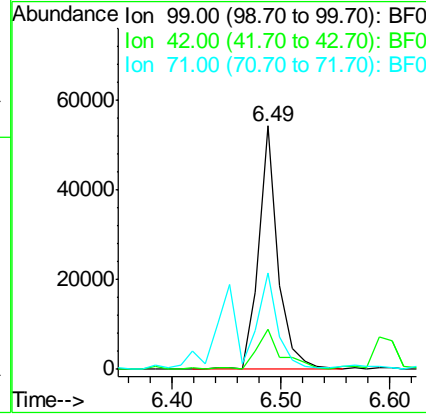
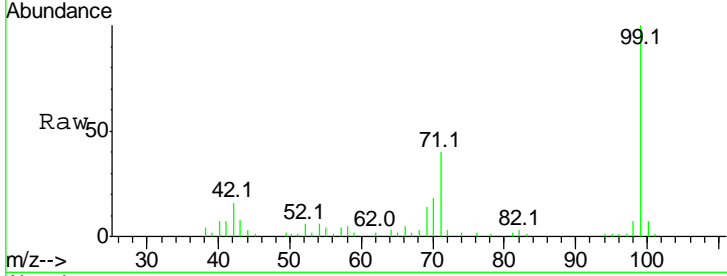




#7
 Phenol-d6
 Concen: 18.12 ng
 RT: 6.49 min Scan# 385
 Delta R.T. 0.01 min
 Lab File: BF084056.D
 Acq: 24 Dec 2015 1:55

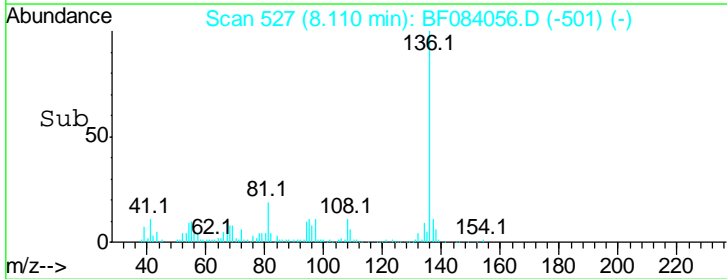
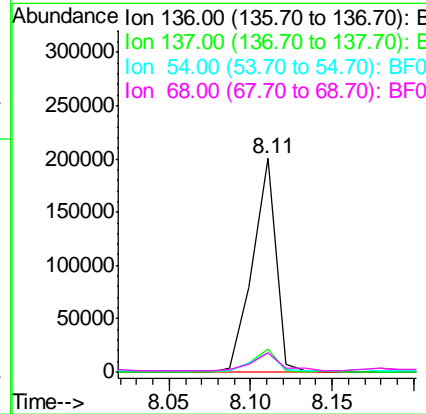
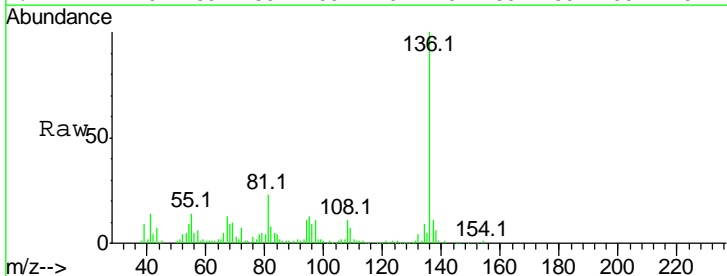
Instrument :
 BNA_F
 ClientSampled :
 MW-02

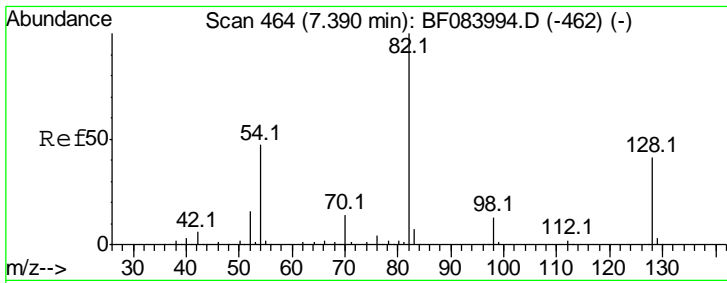
| Tgt Ion | Resp | Lower | Upper |
|---------|-------|-------|-------|
| 99 | 67630 | | |
| 99 | 100 | | |
| 42 | 16.4 | 12.8 | 19.2 |
| 71 | 39.7 | 30.9 | 46.3 |



#21
 Naphthalene-d8
 Concen: 20.00 ng
 RT: 8.11 min Scan# 527
 Delta R.T. -0.00 min
 Lab File: BF084056.D
 Acq: 24 Dec 2015 1:55

| Tgt Ion | Resp | Lower | Upper |
|---------|--------|-------|-------|
| 136 | 200029 | | |
| 136 | 100 | | |
| 137 | 11.1 | 8.7 | 13.1 |
| 54 | 9.2 | 5.8 | 8.8# |
| 68 | 9.2 | 4.2 | 6.2# |

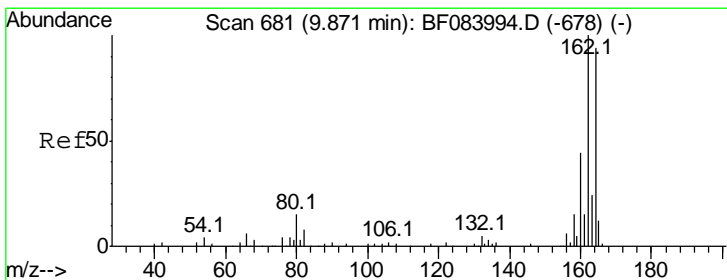
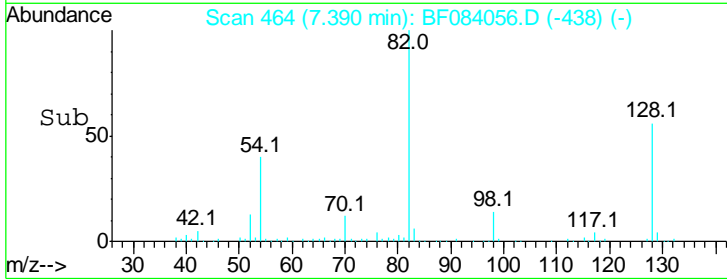
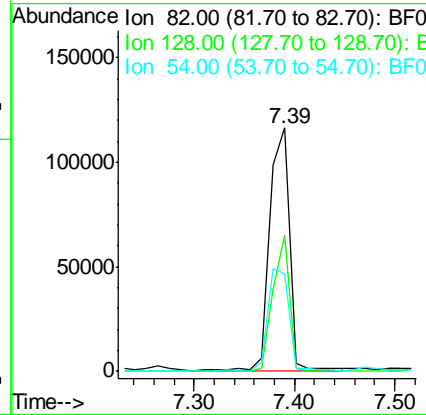
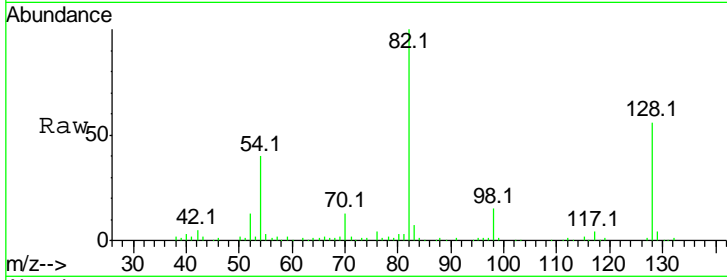




#23
 Nitrobenzene-d5
 Concen: 48.56 ng
 RT: 7.39 min Scan# 464
 Delta R.T. -0.00 min
 Lab File: BF084056.D
 Acq: 24 Dec 2015 1:55

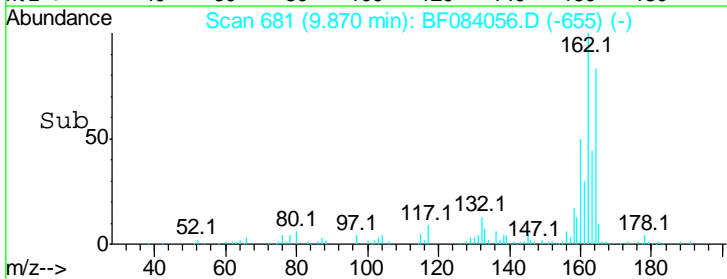
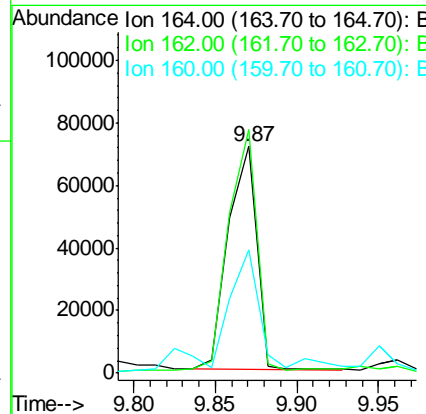
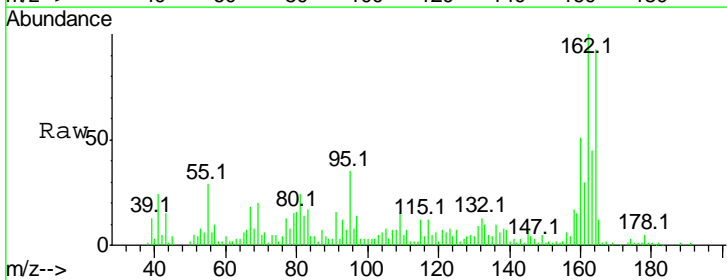
Instrument :
 BNA_F
 ClientSampled :
 MW-02

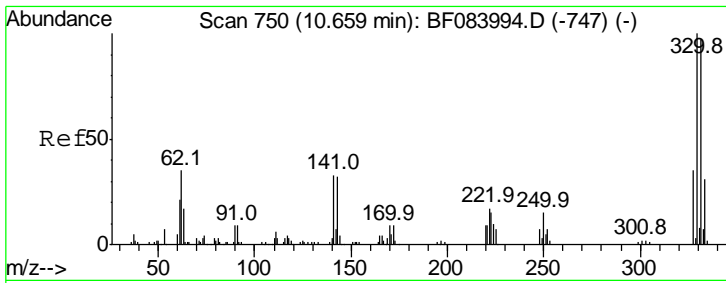
| Tgt Ion | Resp | Lower | Upper |
|---------|--------|-------|-------|
| 82 | 158101 | | |
| 128 | 55.9 | 34.6 | 51.8# |
| 54 | 40.0 | 38.4 | 57.6 |



#38
 Acenaphthene-d10
 Concen: 20.00 ng
 RT: 9.87 min Scan# 681
 Delta R.T. -0.00 min
 Lab File: BF084056.D
 Acq: 24 Dec 2015 1:55

| Tgt Ion | Resp | Lower | Upper |
|---------|-------|-------|-------|
| 164 | 85575 | | |
| 162 | 107.3 | 85.1 | 127.7 |
| 160 | 54.4 | 37.5 | 56.3 |

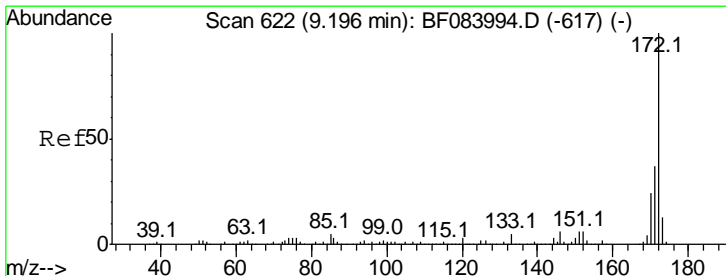
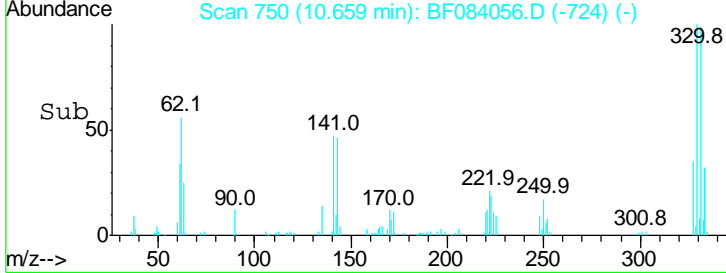
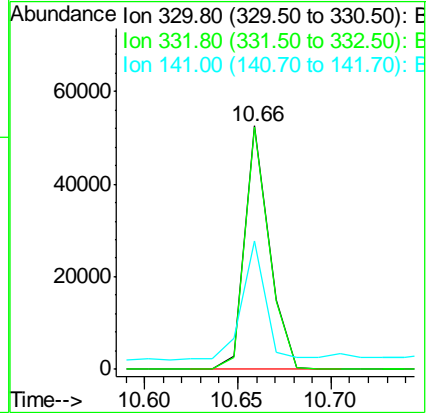
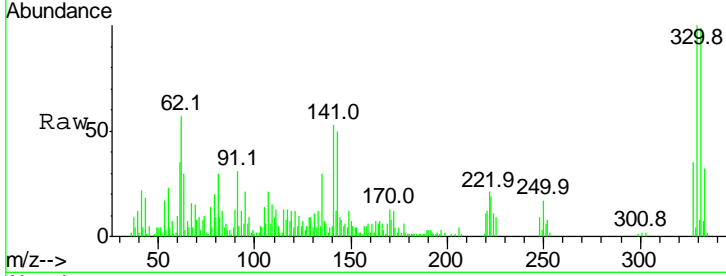




#41
 2,4,6-Tribromophenol
 Concen: 59.03 ng
 RT: 10.66 min Scan# 750
 Delta R.T. -0.00 min
 Lab File: BF084056.D
 Acq: 24 Dec 2015 1:55

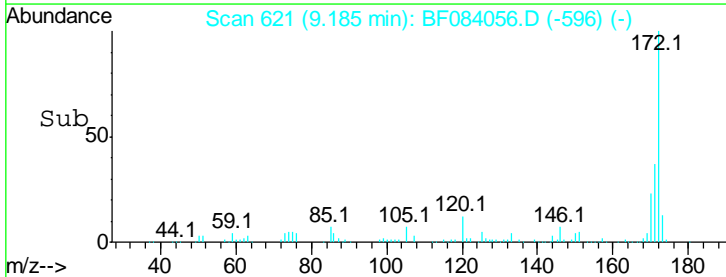
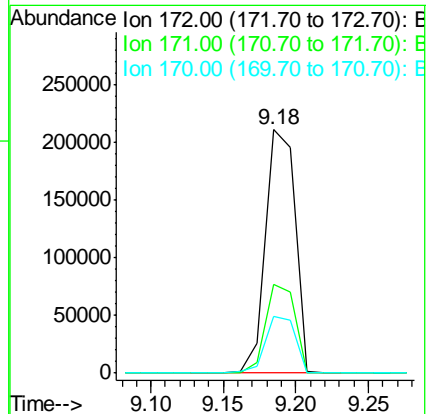
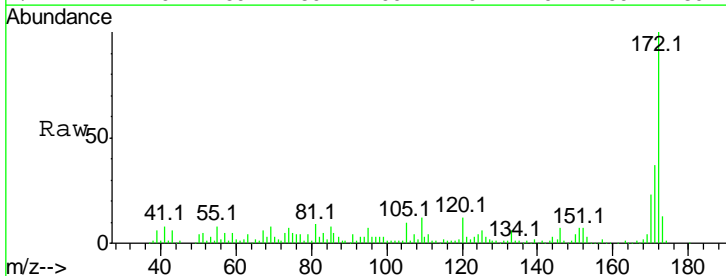
Instrument :
 BNA_F
 ClientSampled :
 MW-02

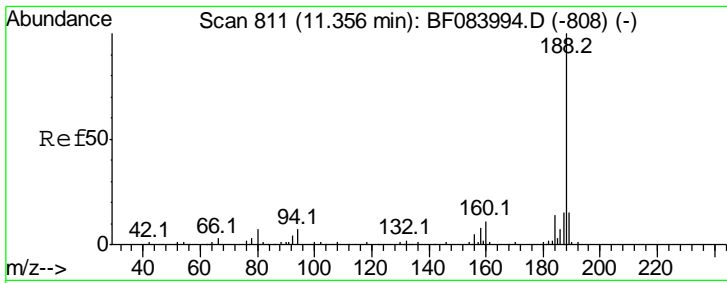
| Tgt Ion | Resp | Lower | Upper |
|---------|------|-------|-------|
| 330 | 100 | | |
| 332 | 98.9 | 76.6 | 114.8 |
| 141 | 48.5 | 27.8 | 41.6# |



#44
 2-Fluorobiphenyl
 Concen: 46.95 ng
 RT: 9.18 min Scan# 621
 Delta R.T. -0.01 min
 Lab File: BF084056.D
 Acq: 24 Dec 2015 1:55

| Tgt Ion | Resp | Lower | Upper |
|---------|------|-------|-------|
| 172 | 100 | | |
| 171 | 36.7 | 28.9 | 43.3 |
| 170 | 23.4 | 18.6 | 27.8 |

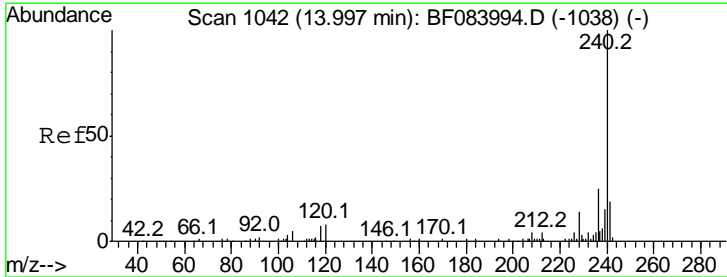
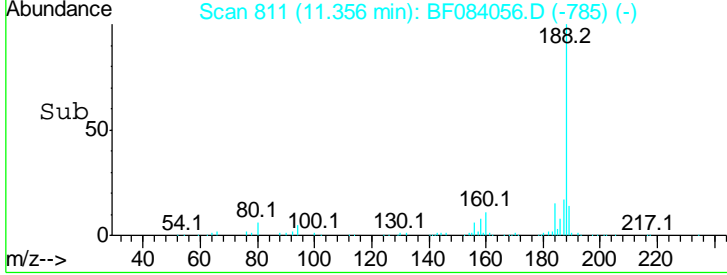
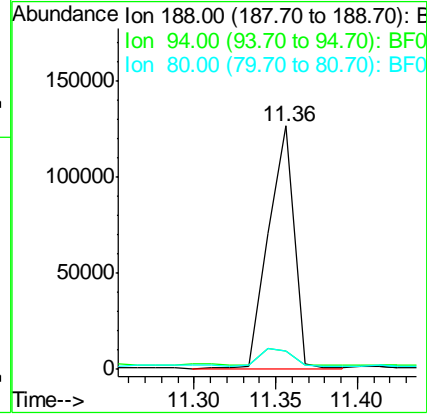
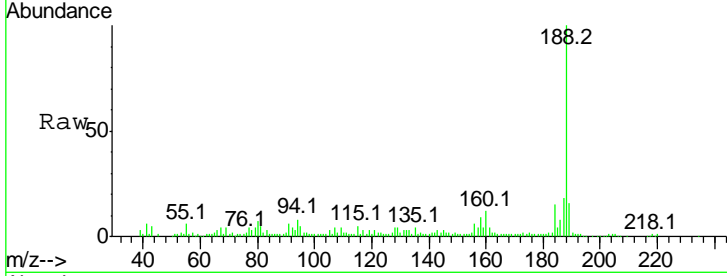




#63
 Phenanthrene-d10
 Concen: 20.00 ng
 RT: 11.36 min Scan# 811
 Delta R.T. -0.00 min
 Lab File: BF084056.D
 Acq: 24 Dec 2015 1:55

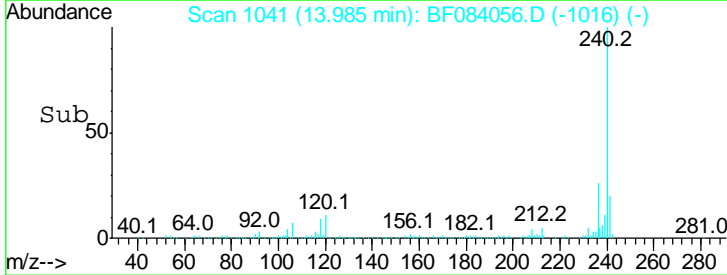
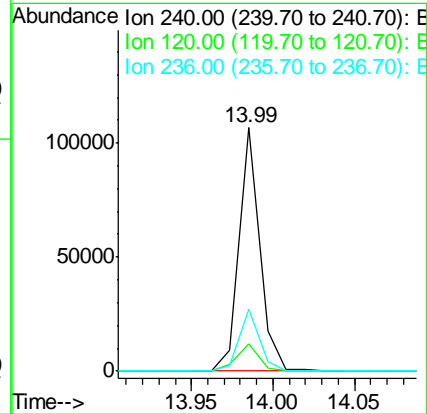
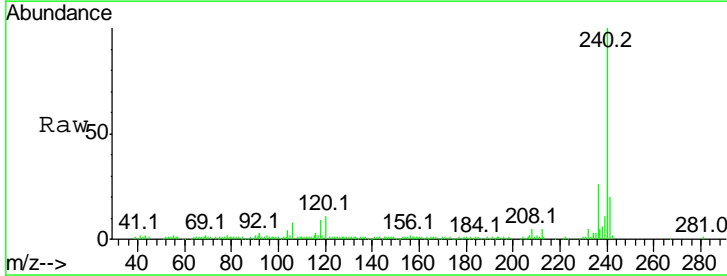
Instrument :
 BNA_F
 ClientSampled :
 MW-02

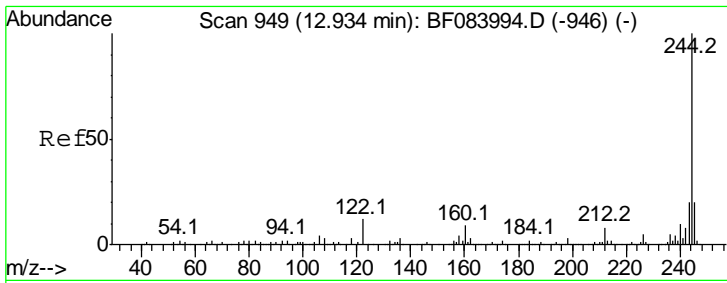
| Tgt Ion | Resp | Lower | Upper |
|---------|------|-------|-------|
| 188 | 100 | | |
| 94 | 7.7 | 9.0 | 13.4# |
| 80 | 7.3 | 9.6 | 14.4# |



#75
 Chrysene-d12
 Concen: 20.00 ng
 RT: 13.99 min Scan# 1041
 Delta R.T. -0.01 min
 Lab File: BF084056.D
 Acq: 24 Dec 2015 1:55

| Tgt Ion | Resp | Lower | Upper |
|---------|------|-------|-------|
| 240 | 100 | | |
| 120 | 11.2 | 9.5 | 14.3 |
| 236 | 25.6 | 20.6 | 31.0 |

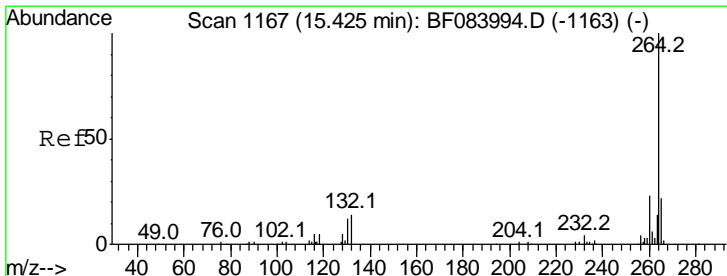
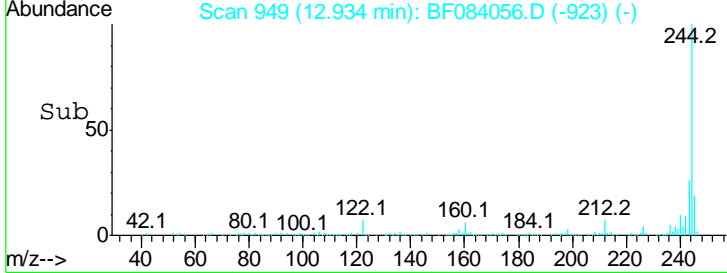
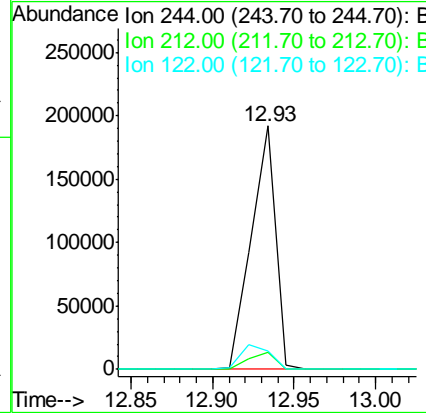
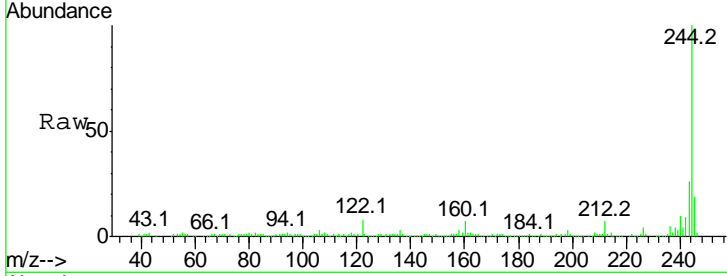




#78
 Terphenyl-d14
 Concen: 51.13 ng
 RT: 12.93 min Scan# 949
 Delta R.T. -0.00 min
 Lab File: BF084056.D
 Acq: 24 Dec 2015 1:55

Instrument :
 BNA_F
 ClientSampled :
 MW-02

| Tgt Ion | Resp | Lower | Upper |
|---------|------|-------|-------|
| 244 | 100 | | |
| 212 | 6.8 | 5.7 | 8.5 |
| 122 | 7.8 | 7.4 | 11.0 |



#86
 Perylene-d12
 Concen: 20.00 ng
 RT: 15.41 min Scan# 1166
 Delta R.T. -0.01 min
 Lab File: BF084056.D
 Acq: 24 Dec 2015 1:55

| Tgt Ion | Resp | Lower | Upper |
|---------|------|-------|-------|
| 264 | 100 | | |
| 260 | 24.4 | 19.4 | 29.2 |
| 265 | 21.3 | 17.8 | 26.6 |

