

Data Path : Z:\HPCHEM1\BNA_F\DATA\BF122316\
 Data File : BF091922.D
 Acq On : 23 Dec 2016 14:33
 Operator : UM/SJ
 Sample : PB95610BL
 Misc :
 ALS Vial : 7 Sample Multiplier: 1

Instrument :
 BNA_F
 ClientSampleId :
 PB95610BL

Quant Time: Dec 23 22:03:57 2016
 Quant Method : Z:\HPCHEM1\BNA_F\METHODS\8270-BF122116.M
 Quant Title : ASP BNA STANDARDS FOR 5 POINT CALIBRATION
 QLast Update : Wed Dec 21 16:17:51 2016
 Response via : Initial Calibration

Internal Standards	R.T.	QIon	Response	Conc	Units	Dev(Min)
1) 1,4-Dichlorobenzene-d4	6.74	152	176114	20.00	ng	-0.01
21) Naphthalene-d8	8.02	136	708131	20.00	ng	-0.02
38) Acenaphthene-d10	9.78	164	386647	20.00	ng	-0.01
63) Phenanthrene-d10	11.25	188	654276	20.00	ng	-0.01
75) Chrysene-d12	13.88	240	537716	20.00	ng	-0.02
86) Perylene-d12	15.28	264	448017	20.00	ng	-0.02

System Monitoring Compounds

5) 2-Fluorophenol	5.39	112	1369119	129.81	ng	0.05
7) Phenol-d6	6.43	99	1655811	128.58	ng	0.02
23) Nitrobenzene-d5	7.31	82	1201207	94.32	ng	-0.01
41) 2,4,6-Tribromophenol	10.57	330	407867	127.47	ng	-0.01
44) 2-Fluorobiphenyl	9.10	172	1917334	104.57	ng	-0.01
78) Terphenyl-d14	12.84	244	1694973	76.45	ng	-0.01

Target Compounds

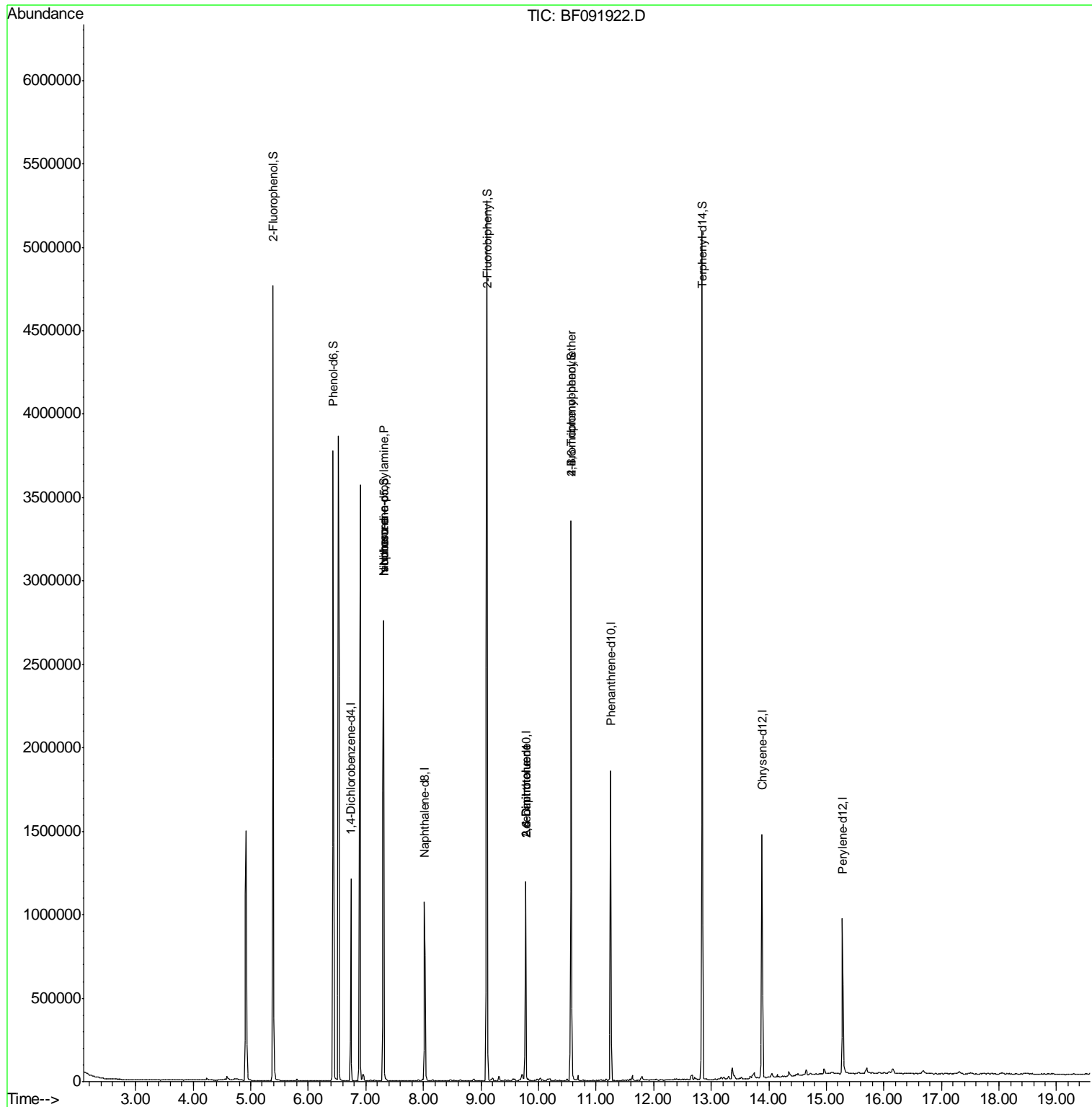
						Qvalue
19) n-Nitroso-di-n-propylamine	7.31	70	161320	18.83	ng	# 74
25) Isophorone	7.31	82	1122477	47.77	ng	# 65
50) 2,6-Dinitrotoluene	9.78	165	50840	9.39	ng	# 30
56) 2,4-Dinitrotoluene	9.78	165	50840	7.48	ng	# 19
66) 4-Bromophenyl-phenylether	10.57	248	26841	3.94	ng	# 1
71) Anthracene	11.25	178	296	Below Cal		# 1
73) Di-n-butylphthalate	11.80	149	12416	Below Cal		# 96
74) Fluoranthene	12.44	202	1435	Below Cal		61

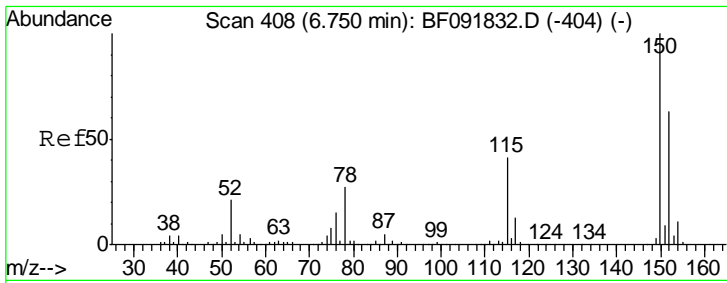
(#) = qualifier out of range (m) = manual integration (+) = signals summed

Data Path : Z:\HPCHEM1\BNA_F\DATA\BF122316\
 Data File : BF091922.D
 Acq On : 23 Dec 2016 14:33
 Operator : UM/SJ
 Sample : PB95610BL
 Misc :
 ALS Vial : 7 Sample Multiplier: 1

Instrument :
 BNA_F
 ClientSampleId :
 PB95610BL

Quant Time: Dec 23 22:03:57 2016
 Quant Method : Z:\HPCHEM1\BNA_F\METHODS\8270-BF122116.M
 Quant Title : ASP BNA STANDARDS FOR 5 POINT CALIBRATION
 QLast Update : Wed Dec 21 16:17:51 2016
 Response via : Initial Calibration

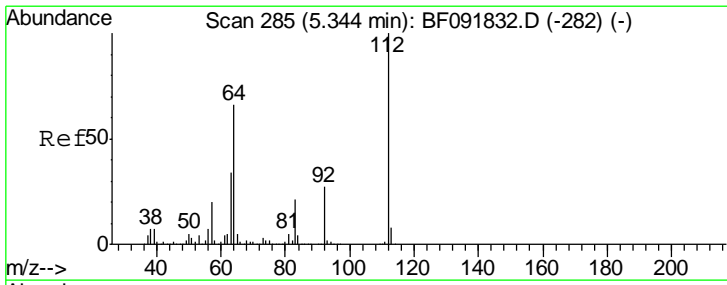
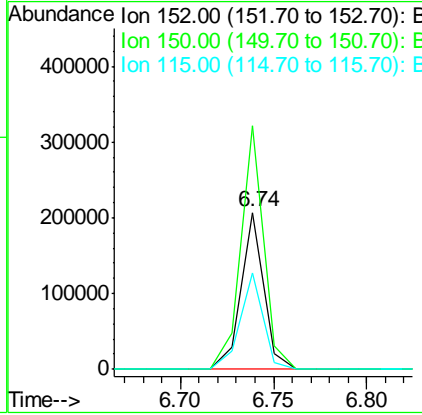
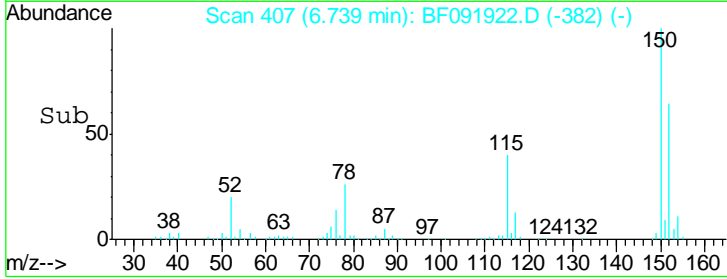
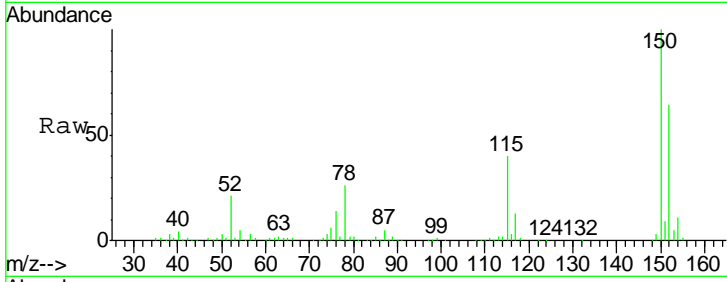




#1
 1,4-Dichlorobenzene-d4
 Concen: 20.00 ng
 RT: 6.74 min Scan# 407
 Delta R.T. -0.01 min
 Lab File: BF091922.D
 Acq: 23 Dec 2016 14:33

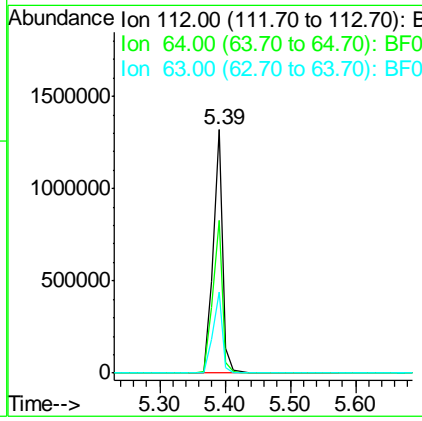
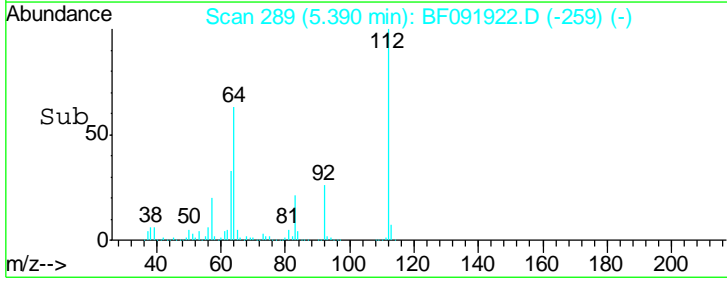
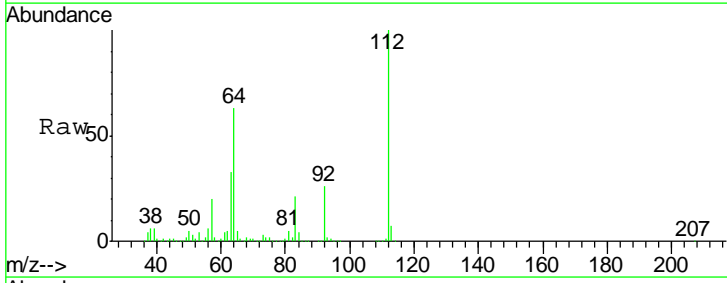
Instrument :
 BNA_F
ClientSampled :
 PB95610BL

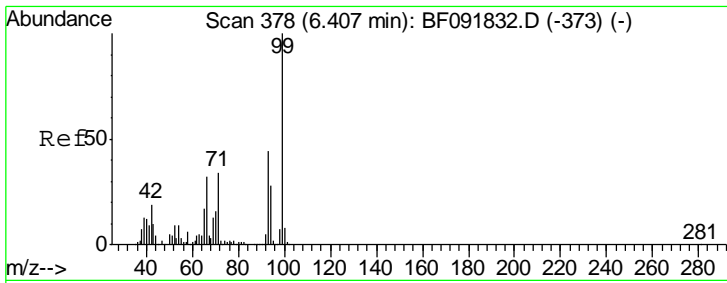
Tgt Ion	Resp	Lower	Upper
152	176114		
150	155.2	124.9	187.3
115	61.5	46.0	69.0



#5
 2-Fluorophenol
 Concen: 129.81 ng
 RT: 5.39 min Scan# 289
 Delta R.T. 0.05 min
 Lab File: BF091922.D
 Acq: 23 Dec 2016 14:33

Tgt Ion	Resp	Lower	Upper
112	1369119		
64	62.8	46.1	69.1
63	33.2	23.8	35.6

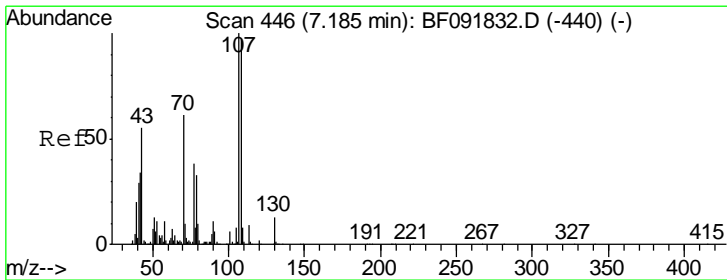
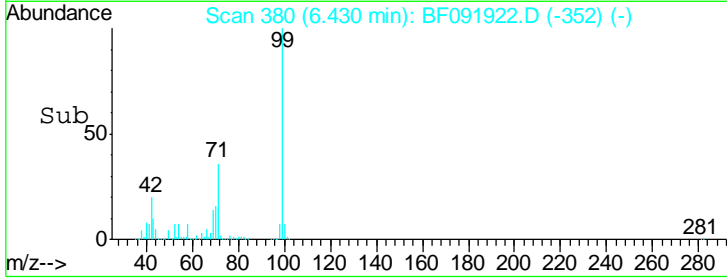
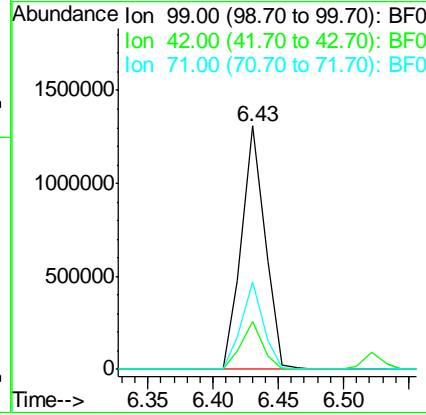
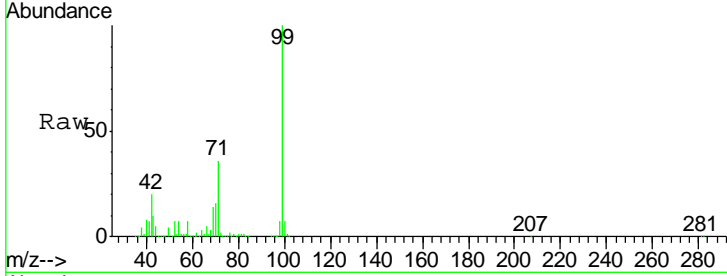




#7
 Phenol-d6
 Concen: 128.58 ng
 RT: 6.43 min Scan# 380
 Delta R.T. 0.02 min
 Lab File: BF091922.D
 Acq: 23 Dec 2016 14:33

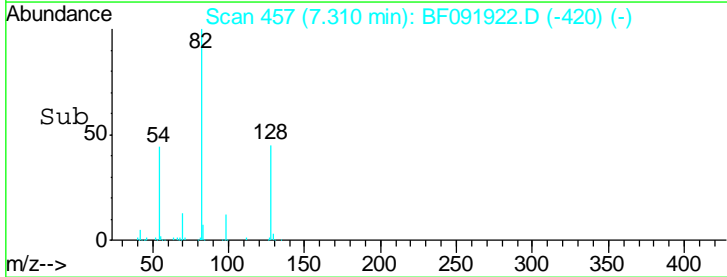
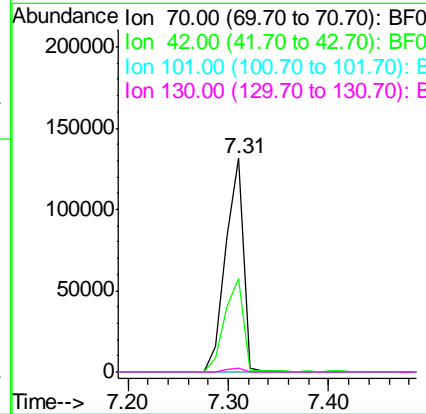
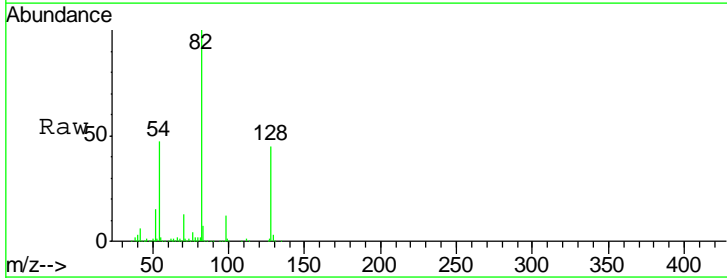
Instrument :
 BNA_F
 ClientSampled :
 PB95610BL

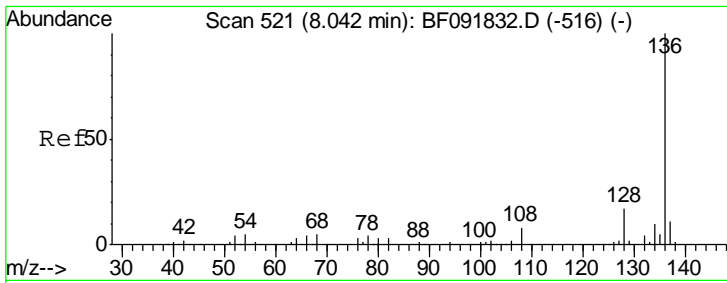
Tgt Ion	Resp	Lower	Upper
99	1655811		
42	19.8	15.6	23.4
71	36.0	27.5	41.3



#19
 n-Nitroso-di-n-propylamine
 Concen: 18.83 ng
 RT: 7.31 min Scan# 457
 Delta R.T. 0.13 min
 Lab File: BF091922.D
 Acq: 23 Dec 2016 14:33

Tgt Ion	Resp	Lower	Upper
70	161320		
42	43.6	49.4	74.0#
101	0.0	7.4	11.2#
130	2.1	14.2	21.4#



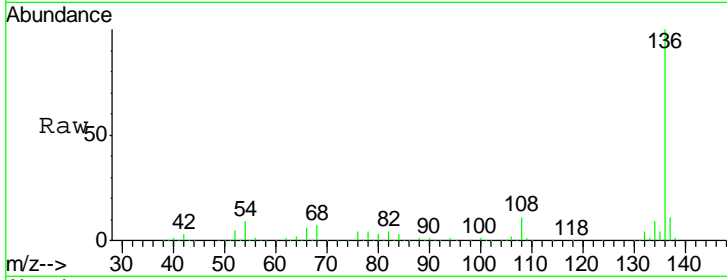


#21
 Naphthalene-d8
 Concen: 20.00 ng
 RT: 8.02 min Scan# 519
 Delta R.T. -0.02 min
 Lab File: BF091922.D
 Acq: 23 Dec 2016 14:33

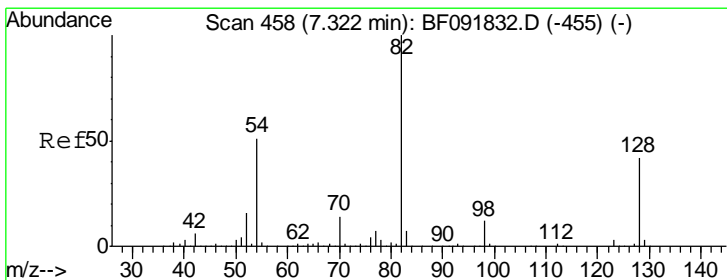
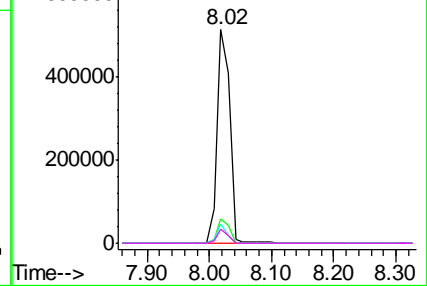
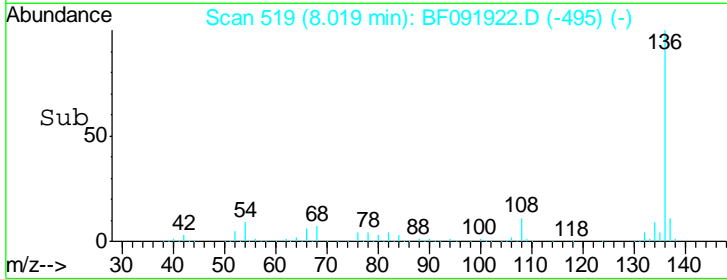
Instrument :
 BNA_F
 ClientSampled :
 PB95610BL

Tgt Ion: 136 Resp: 708131

Ion	Ratio	Lower	Upper
136	100		
137	11.2	8.4	12.6
54	9.0	4.5	6.7#
68	6.7	3.6	5.4#



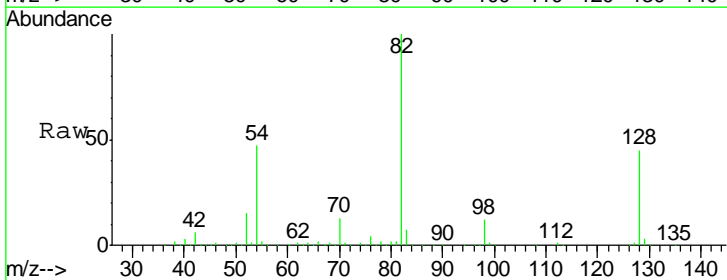
Abundance Ion 136.00 (135.70 to 136.70): E
 Ion 137.00 (136.70 to 137.70): E
 Ion 54.00 (53.70 to 54.70): BF0
 Ion 68.00 (67.70 to 68.70): BF0



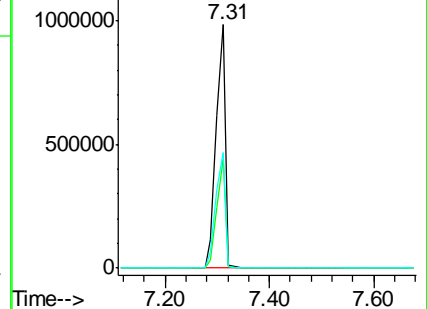
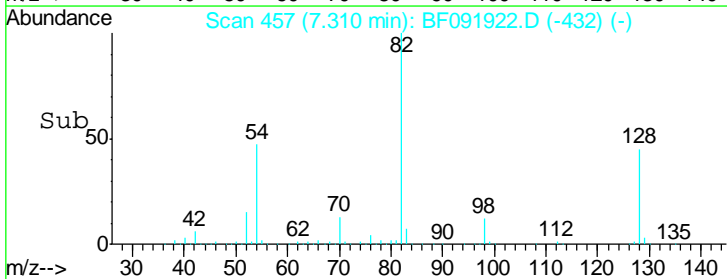
#23
 Nitrobenzene-d5
 Concen: 94.32 ng
 RT: 7.31 min Scan# 457
 Delta R.T. -0.01 min
 Lab File: BF091922.D
 Acq: 23 Dec 2016 14:33

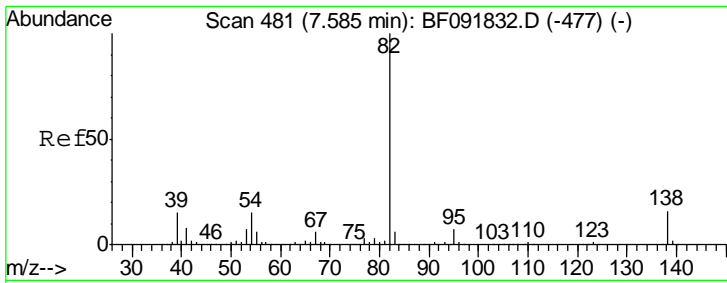
Tgt Ion: 82 Resp: 1201207

Ion	Ratio	Lower	Upper
82	100		
128	44.7	34.6	52.0
54	47.4	39.5	59.3



Abundance Ion 82.00 (81.70 to 82.70): BF0
 Ion 128.00 (127.70 to 128.70): E
 Ion 54.00 (53.70 to 54.70): BF0

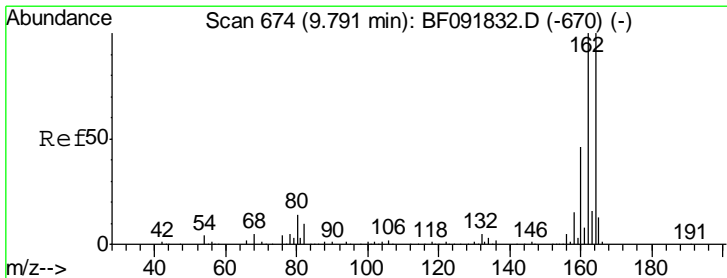
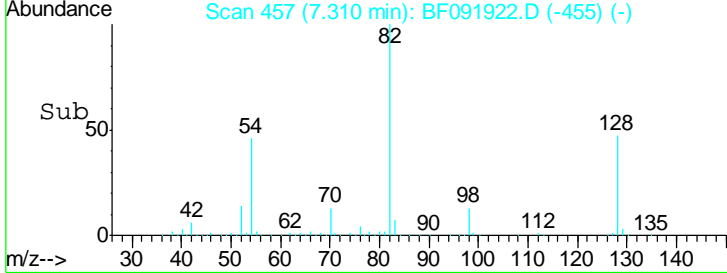
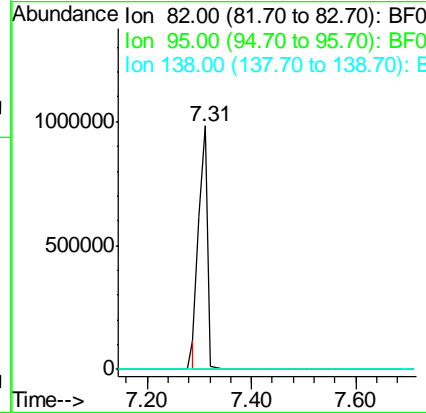
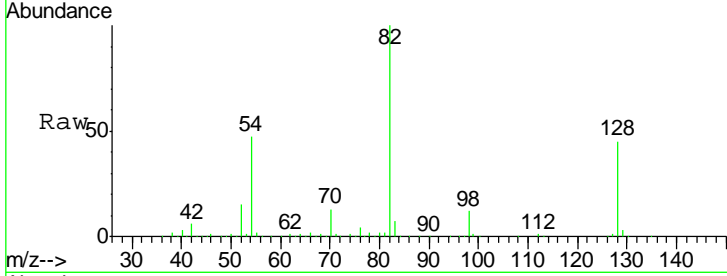




#25
 Isophorone
 Concen: 47.77 ng
 RT: 7.31 min Scan# 457
 Delta R.T. -0.27 min
 Lab File: BF091922.D
 Acq: 23 Dec 2016 14:33

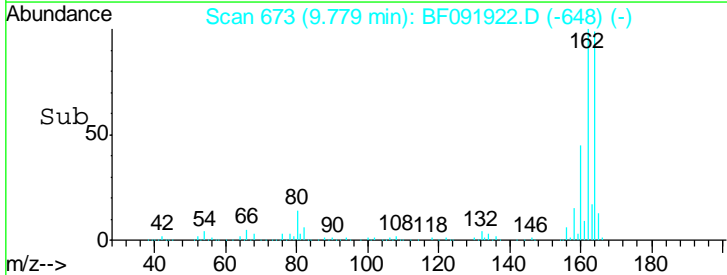
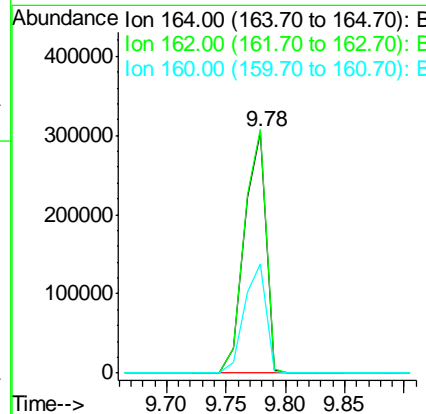
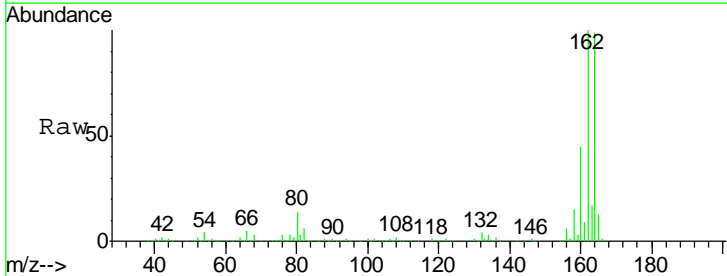
Instrument :
 BNA_F
 ClientSampled :
 PB95610BL

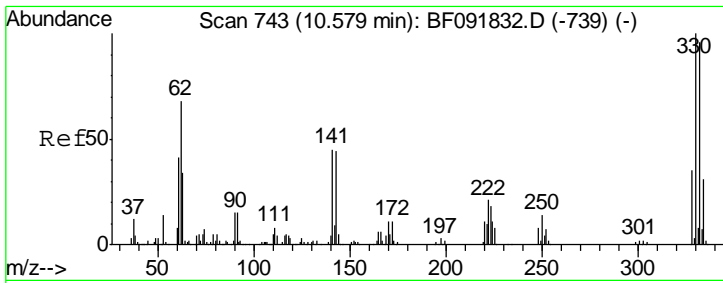
Tgt Ion	Resp	Lower	Upper
82	1122477		
95	0.0	5.6	8.4#
138	0.0	14.6	22.0#



#38
 Acenaphthene-d10
 Concen: 20.00 ng
 RT: 9.78 min Scan# 673
 Delta R.T. -0.01 min
 Lab File: BF091922.D
 Acq: 23 Dec 2016 14:33

Tgt Ion	Resp	Lower	Upper
164	386647		
162	100.8	80.2	120.2
160	45.4	36.9	55.3

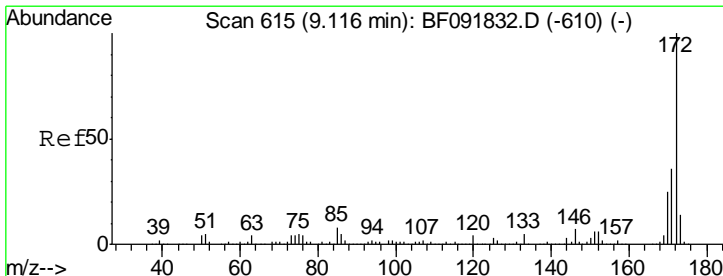
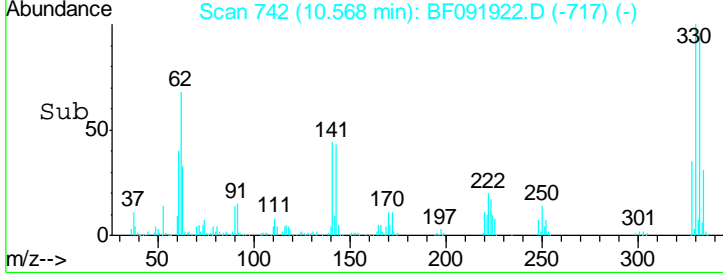
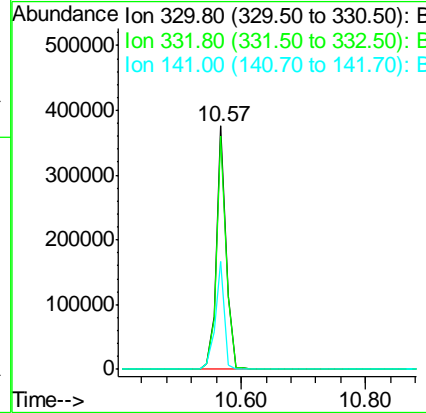
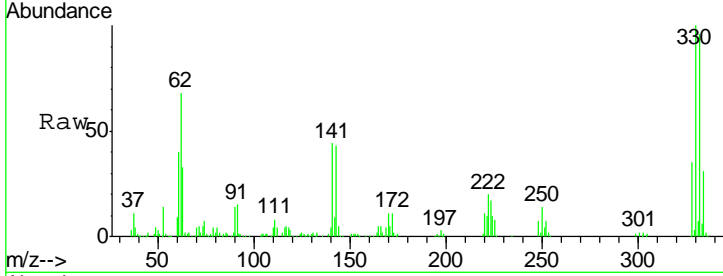




#41
 2,4,6-Tribromophenol
 Concen: 127.47 ng
 RT: 10.57 min Scan# 742
 Delta R.T. -0.01 min
 Lab File: BF091922.D
 Acq: 23 Dec 2016 14:33

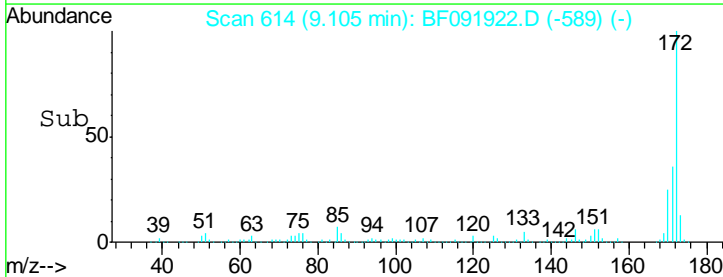
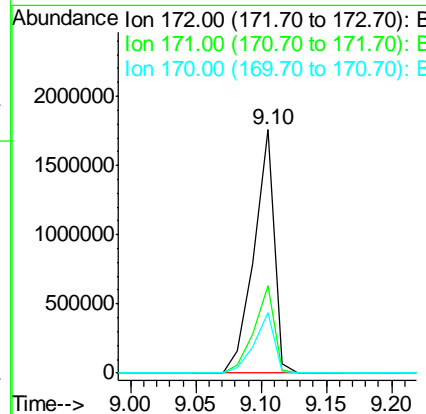
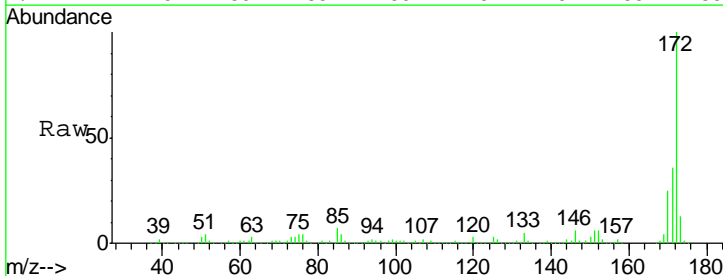
Instrument :
 BNA_F
 ClientSampleID :
 PB95610BL

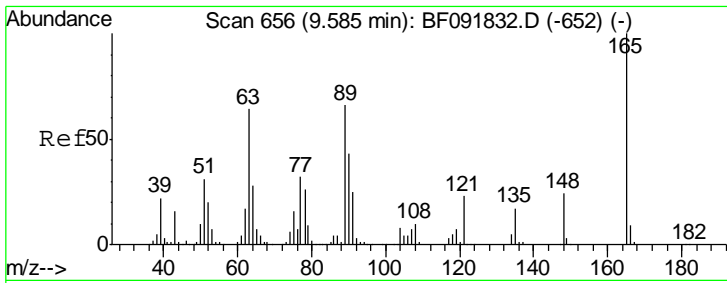
Tgt Ion	Resp	Lower	Upper
330	100		
332	96.2	77.4	116.2
141	41.0	34.1	51.1



#44
 2-Fluorobiphenyl
 Concen: 104.57 ng
 RT: 9.10 min Scan# 614
 Delta R.T. -0.01 min
 Lab File: BF091922.D
 Acq: 23 Dec 2016 14:33

Tgt Ion	Resp	Lower	Upper
172	100		
171	36.1	29.4	44.0
170	25.0	20.2	30.4

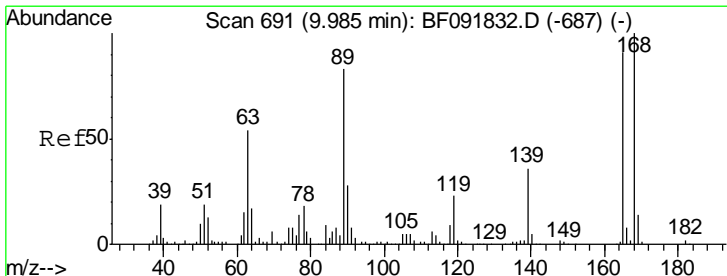
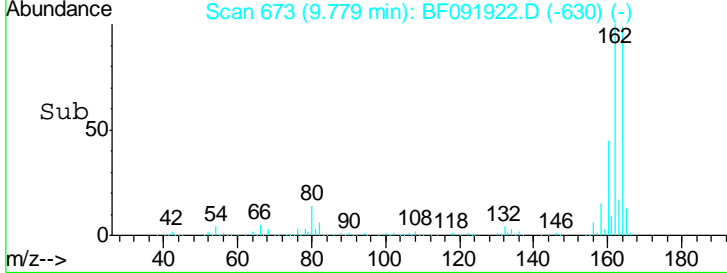
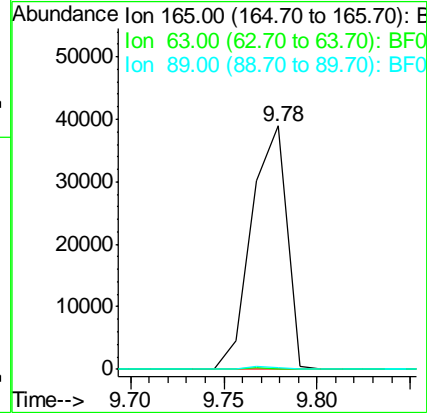
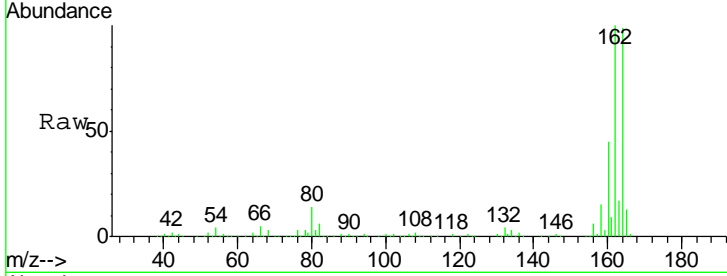




#50
 2,6-Dinitrotoluene
 Concen: 9.39 ng
 RT: 9.78 min Scan# 673
 Delta R.T. 0.19 min
 Lab File: BF091922.D
 Acq: 23 Dec 2016 14:33

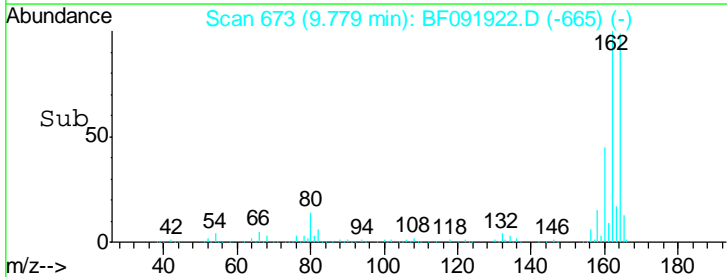
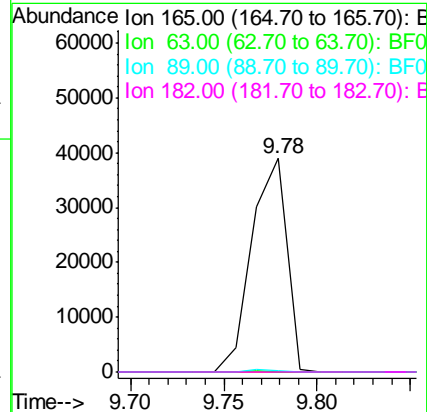
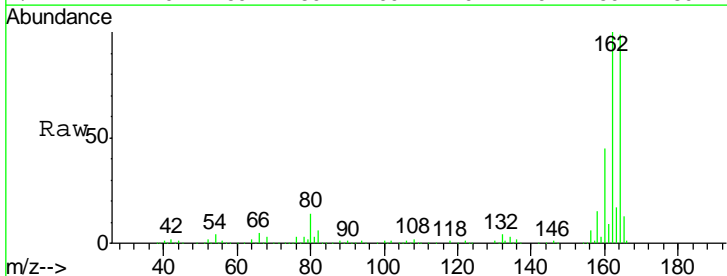
Instrument :
 BNA_F
 ClientSampleID :
 PB95610BL

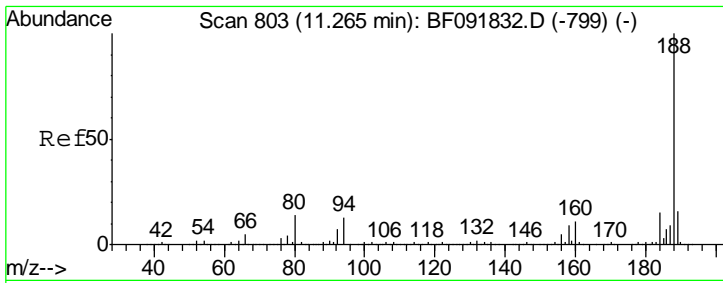
Tgt Ion	Resp	Lower	Upper
165	100		
63	0.0	36.2	54.4#
89	0.8	40.2	60.4#



#56
 2,4-Dinitrotoluene
 Concen: 7.48 ng
 RT: 9.78 min Scan# 673
 Delta R.T. -0.21 min
 Lab File: BF091922.D
 Acq: 23 Dec 2016 14:33

Tgt Ion	Resp	Lower	Upper
165	100		
63	0.0	40.2	60.4#
89	0.8	62.5	93.7#
182	0.0	1.8	2.8#

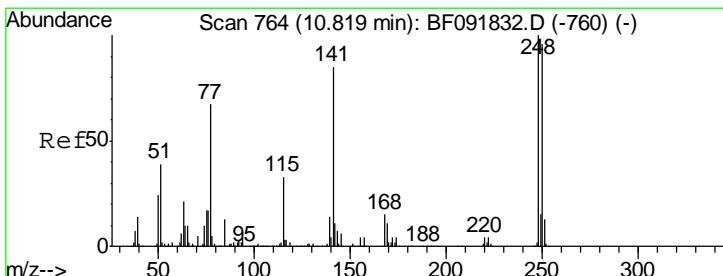
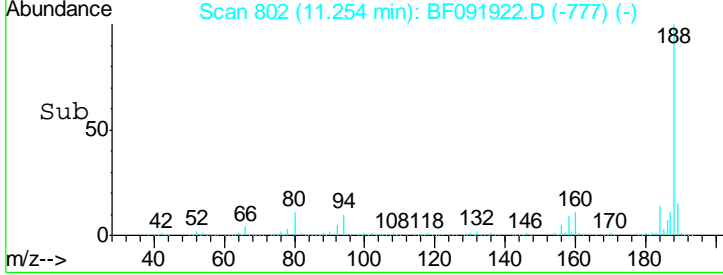
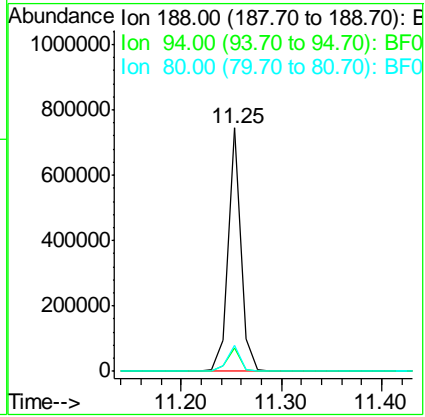
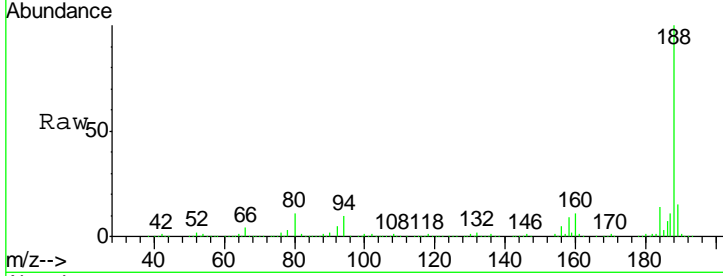




#63
 Phenanthrene-d10
 Concen: 20.00 ng
 RT: 11.25 min Scan# 802
 Delta R.T. -0.01 min
 Lab File: BF091922.D
 Acq: 23 Dec 2016 14:33

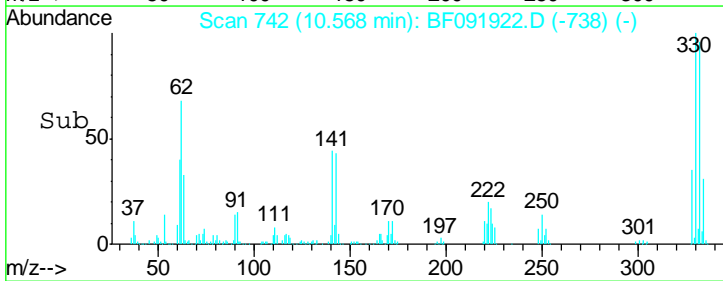
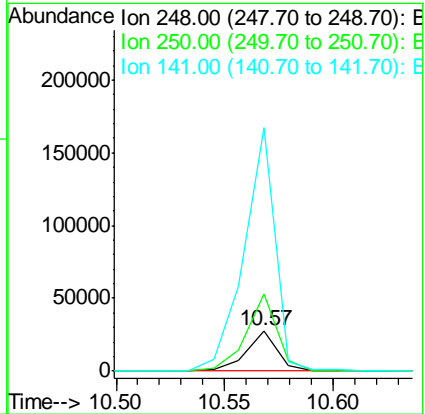
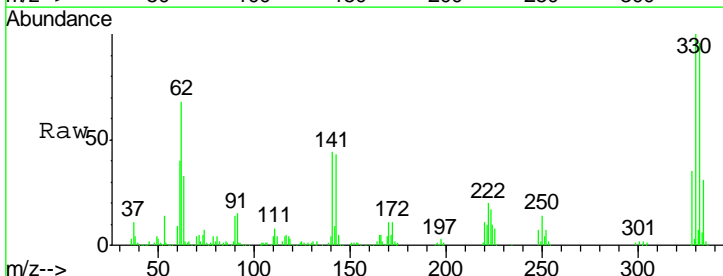
Instrument :
 BNA_F
 ClientSampled :
 PB95610BL

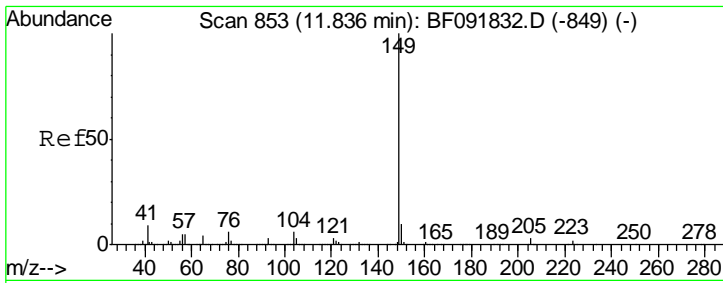
Tgt Ion	Resp	Lower	Upper
188	100		
94	9.8	10.0	15.0#
80	10.8	11.2	16.8#



#66
 4-Bromophenyl-phenylether
 Concen: 3.94 ng
 RT: 10.57 min Scan# 742
 Delta R.T. -0.25 min
 Lab File: BF091922.D
 Acq: 23 Dec 2016 14:33

Tgt Ion	Resp	Lower	Upper
248	100		
250	190.0	76.9	115.3#
141	603.3	68.2	102.4#

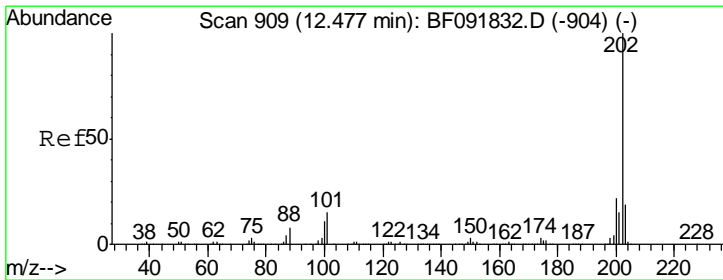
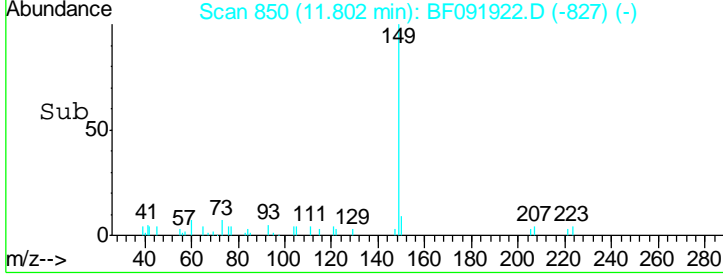
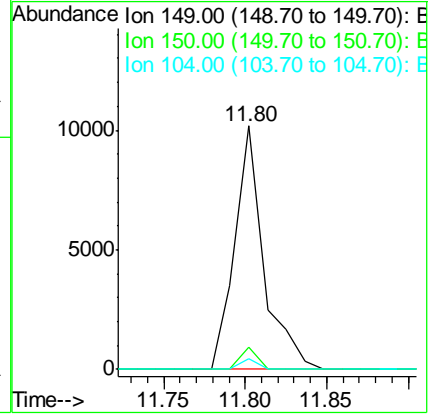
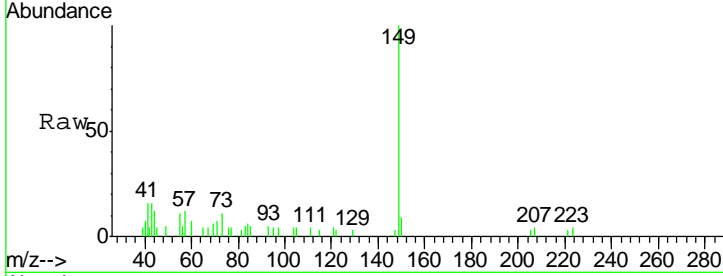




#73
 Di-n-butylphthalate
 Concen: Below Cal
 RT: 11.80 min Scan# 850
 Delta R.T. -0.03 min
 Lab File: BF091922.D
 Acq: 23 Dec 2016 14:33

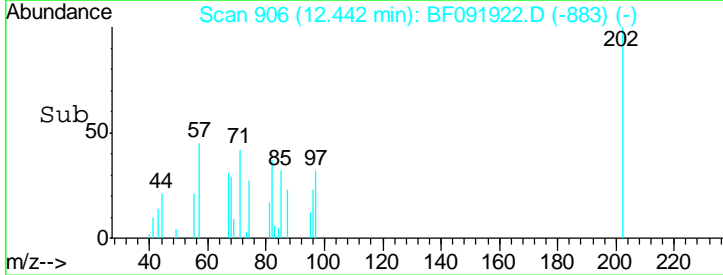
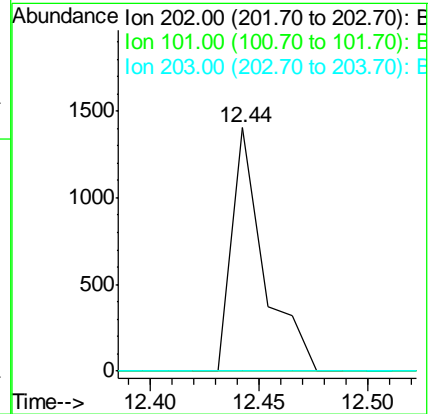
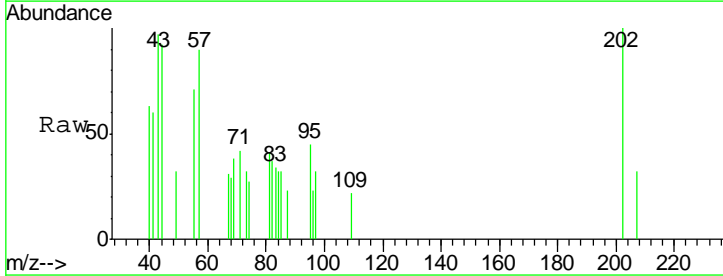
Instrument :
 BNA_F
 ClientSampled :
 PB95610BL

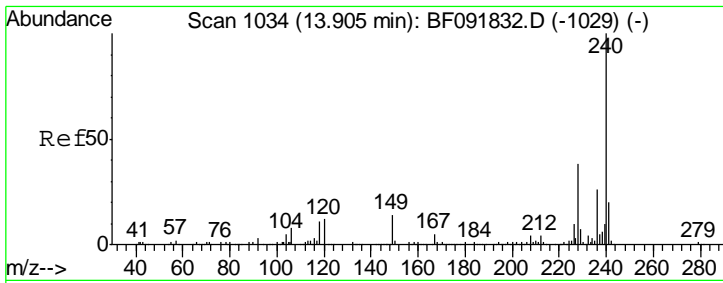
Tgt Ion	Resp	Lower	Upper
149	12416		
150	8.9	8.1	12.1
104	4.4	4.6	7.0#



#74
 Fluoranthene
 Concen: Below Cal
 RT: 12.44 min Scan# 906
 Delta R.T. -0.03 min
 Lab File: BF091922.D
 Acq: 23 Dec 2016 14:33

Tgt Ion	Resp	Lower	Upper
202	1435		
101	0.0	0.0	34.6
203	0.0	0.0	38.7

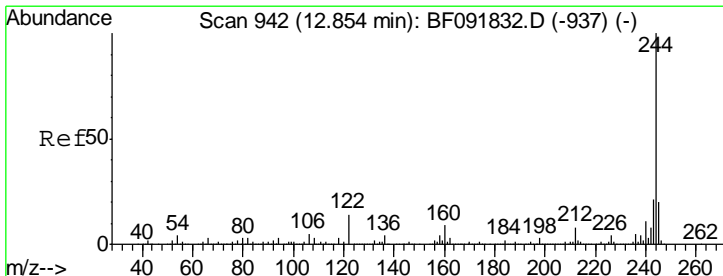
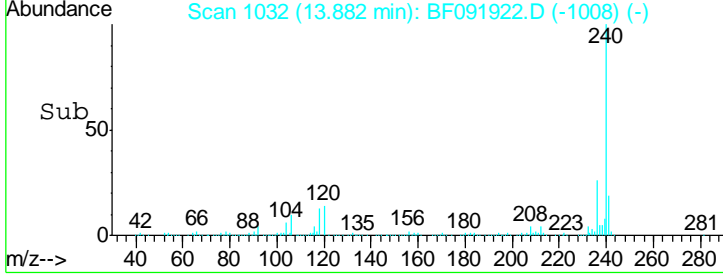
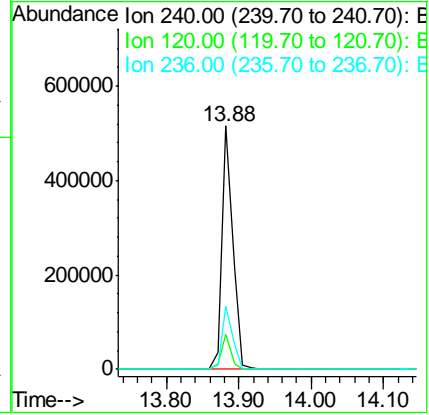
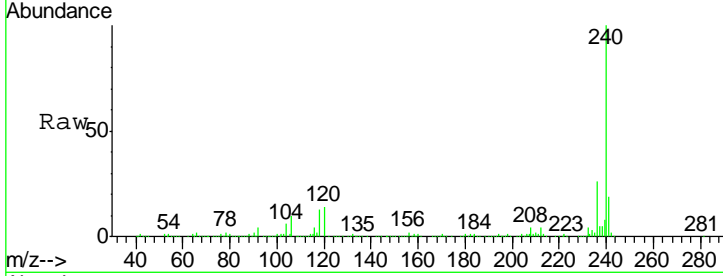




#75
 Chrysene-d12
 Concen: 20.00 ng
 RT: 13.88 min Scan# 1032
 Delta R.T. -0.02 min
 Lab File: BF091922.D
 Acq: 23 Dec 2016 14:33

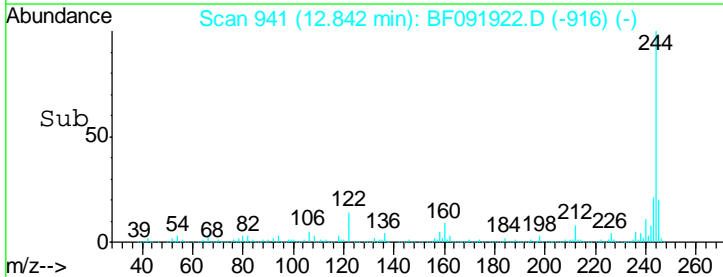
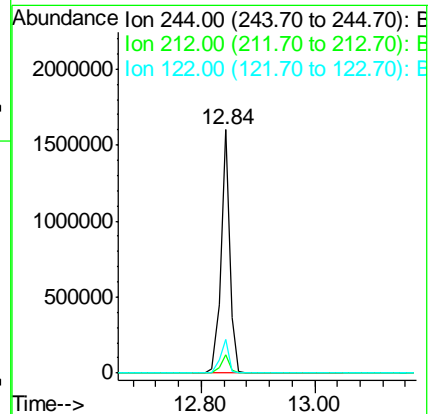
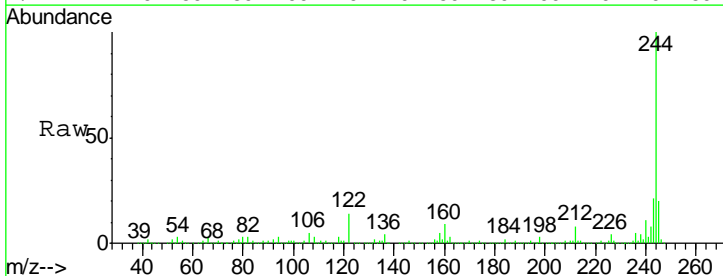
Instrument :
 BNA_F
 ClientSampled :
 PB95610BL

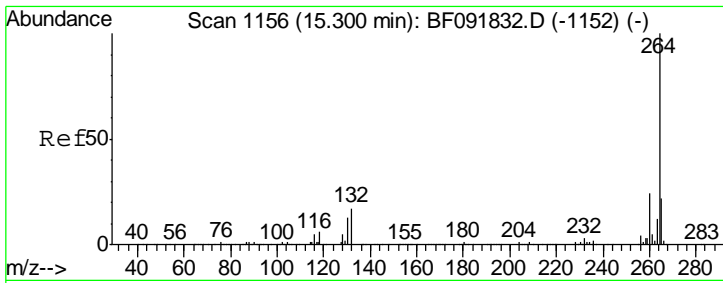
Tgt Ion	Resp	Lower	Upper
240	537716		
120	14.3	12.9	19.3
236	26.0	20.9	31.3



#78
 Terphenyl-d14
 Concen: 76.45 ng
 RT: 12.84 min Scan# 941
 Delta R.T. -0.01 min
 Lab File: BF091922.D
 Acq: 23 Dec 2016 14:33

Tgt Ion	Resp	Lower	Upper
244	1694973		
212	7.7	6.2	9.2
122	13.6	11.4	17.2





#86
 Perylene-d12
 Concen: 20.00 ng
 RT: 15.28 min Scan# 1154
 Delta R.T. -0.02 min
 Lab File: BF091922.D
 Acq: 23 Dec 2016 14:33

Instrument :
 BNA_F
ClientSampled :
 PB95610BL

Tgt Ion	Resp	Lower	Upper
264	448017		
260	23.7	19.2	28.8
265	21.6	17.4	26.0

