

Data Path : Z:\svoasrv\HPCHEM1\BNA_F\Data\BF122324\
 Data File : BF140968.D
 Acq On : 23 Dec 2024 16:14
 Operator : RC/JU
 Sample : P5346-01
 Misc :
 ALS Vial : 9 Sample Multiplier: 1

Instrument :
 BNA_F
 ClientSampleId :
 ETGI-328

Quant Time: Dec 23 16:41:25 2024
 Quant Method : Z:\svoasrv\HPCHEM1\BNA_F\Methods\8270-BF121624.M
 Quant Title : ASP BNA STANDARDS FOR 5 POINT CALIBRATION
 QLast Update : Mon Dec 16 16:59:50 2024
 Response via : Initial Calibration

Compound	R.T.	QIon	Response	Conc	Units	Dev(Min)
Internal Standards						
1) 1,4-Dichlorobenzene-d4	6.846	152	68575	20.000	ng	0.00
21) Naphthalene-d8	8.128	136	259787	20.000	ng	0.00
39) Acenaphthene-d10	9.881	164	147461	20.000	ng	0.00
64) Phenanthrene-d10	11.375	188	253428	20.000	ng	0.00
76) Chrysene-d12	14.057	240	162141	20.000	ng	0.02
86) Perylene-d12	15.604	264	157264	20.000	ng	0.06
System Monitoring Compounds						
5) 2-Fluorophenol	5.499	112	502223	120.562	ng	0.01
7) Phenol-d6	6.504	99	589496	106.841	ng	0.00
23) Nitrobenzene-d5	7.416	82	443376	85.388	ng	0.00
42) 2,4,6-Tribromophenol	10.681	330	230297	132.048	ng	0.00
45) 2-Fluorobiphenyl	9.198	172	907888	84.647	ng	0.00
79) Terphenyl-d14	12.963	244	950746	92.463	ng	0.00

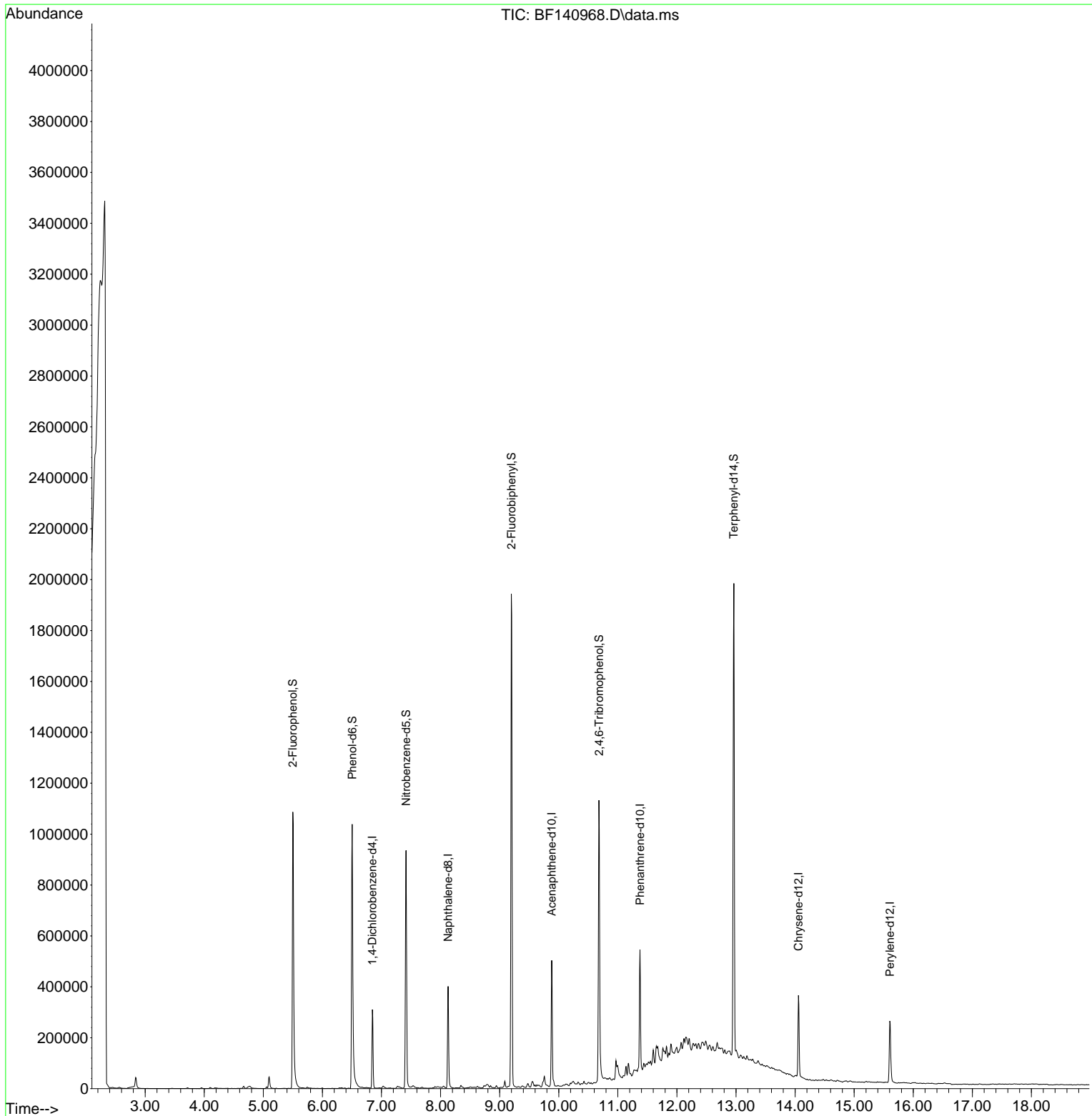
Target Compounds Qvalue

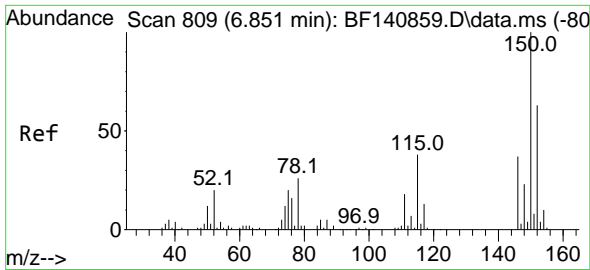
(#) = qualifier out of range (m) = manual integration (+) = signals summed

Data Path : Z:\svoasrv\HPCHEM1\BNA_F\Data\BF122324\
 Data File : BF140968.D
 Acq On : 23 Dec 2024 16:14
 Operator : RC/JU
 Sample : P5346-01
 Misc :
 ALS Vial : 9 Sample Multiplier: 1

Instrument :
 BNA_F
 ClientSampleId :
 ETGI-328

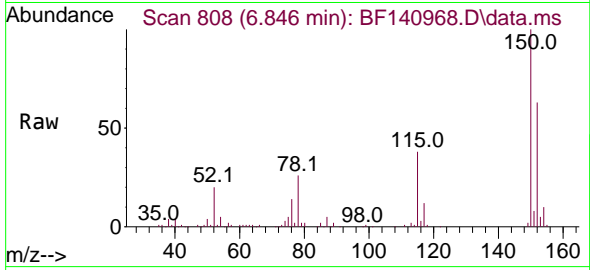
Quant Time: Dec 23 16:41:25 2024
 Quant Method : Z:\svoasrv\HPCHEM1\BNA_F\Methods\8270-BF121624.M
 Quant Title : ASP BNA STANDARDS FOR 5 POINT CALIBRATION
 QLast Update : Mon Dec 16 16:59:50 2024
 Response via : Initial Calibration



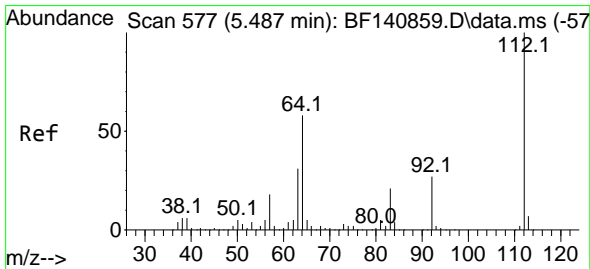
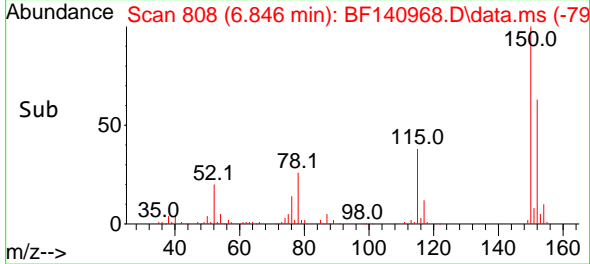
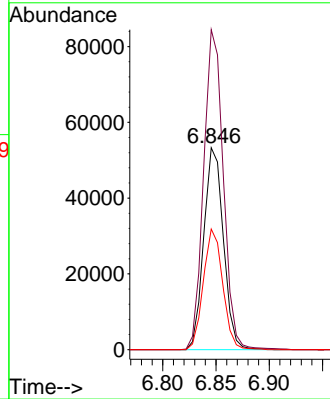


#1
 1,4-Dichlorobenzene-d4
 Concen: 20.000 ng
 RT: 6.846 min Scan# 80
 Delta R.T. -0.005 min
 Lab File: BF140968.D
 Acq: 23 Dec 2024 16:14

Instrument :
 BNA_F
 ClientSampleId :
 ETGI-328

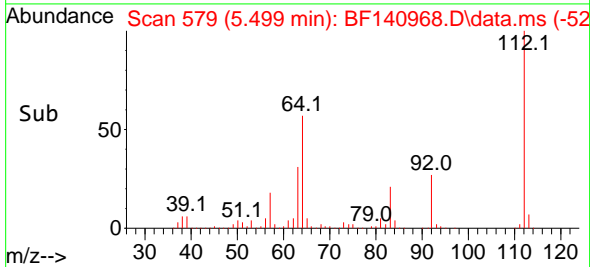
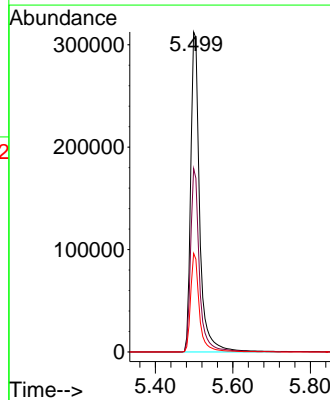
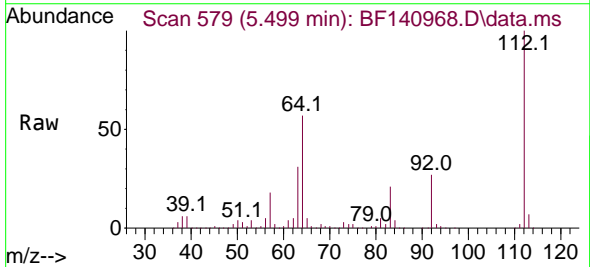


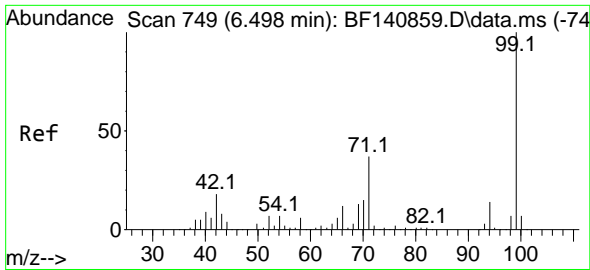
Tgt Ion:152 Resp: 68575
 Ion Ratio Lower Upper
 152 100
 150 158.4 127.9 191.9
 115 59.8 48.0 72.0



#5
 2-Fluorophenol
 Concen: 120.562 ng
 RT: 5.499 min Scan# 579
 Delta R.T. 0.012 min
 Lab File: BF140968.D
 Acq: 23 Dec 2024 16:14

Tgt Ion:112 Resp: 502223
 Ion Ratio Lower Upper
 112 100
 64 57.3 46.1 69.1
 63 30.8 24.9 37.3



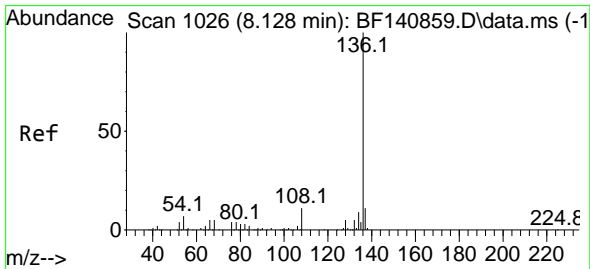
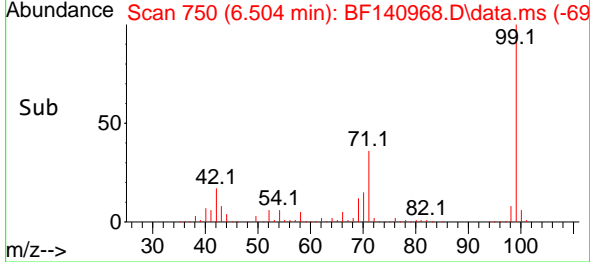
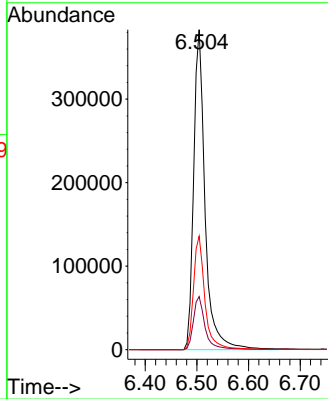
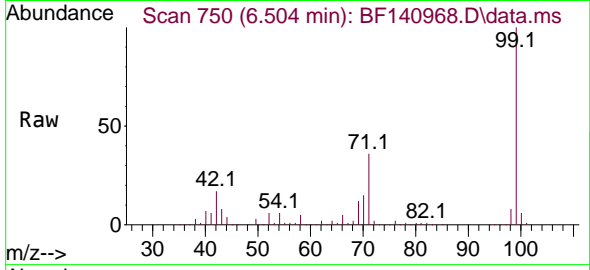


#7
Phenol-d6
Concen: 106.841 ng
RT: 6.504 min Scan# 71
Delta R.T. 0.006 min
Lab File: BF140968.D
Acq: 23 Dec 2024 16:14

Instrument :
BNA_F
ClientSampleId :
ETGI-328

Tgt Ion: 99 Resp: 589496

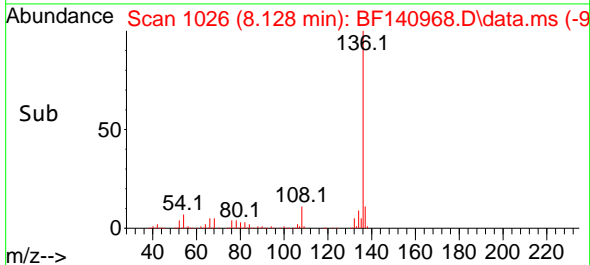
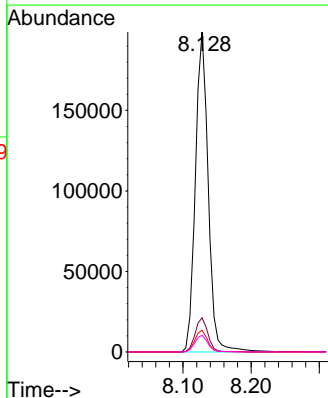
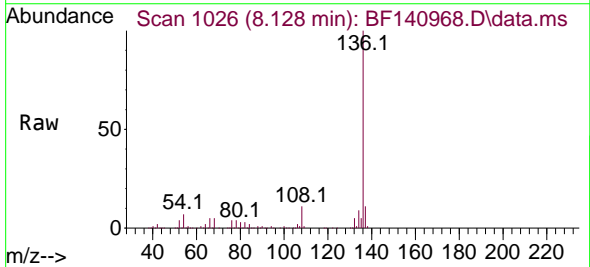
Ion	Ratio	Lower	Upper
99	100		
42	16.6	14.3	21.5
71	35.5	29.9	44.9

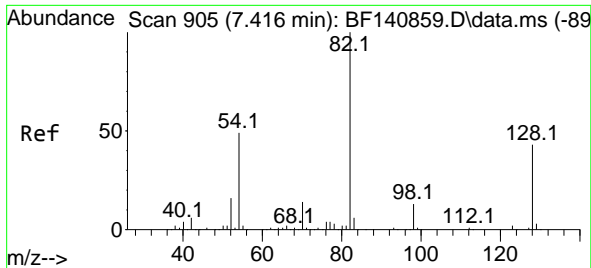


#21
Naphthalene-d8
Concen: 20.000 ng
RT: 8.128 min Scan# 1026
Delta R.T. 0.000 min
Lab File: BF140968.D
Acq: 23 Dec 2024 16:14

Tgt Ion: 136 Resp: 259787

Ion	Ratio	Lower	Upper
136	100		
137	10.7	9.0	13.4
54	6.7	5.6	8.4
68	5.2	4.2	6.2



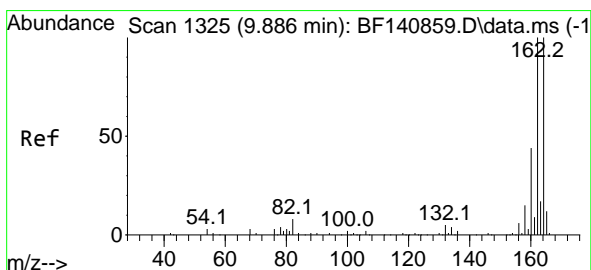
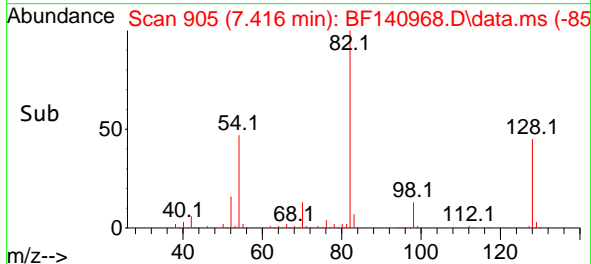
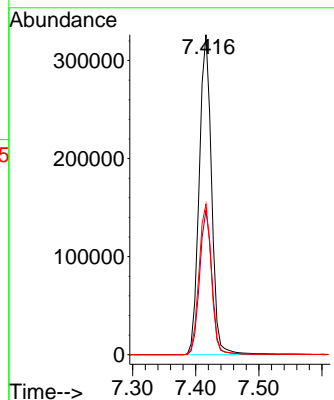
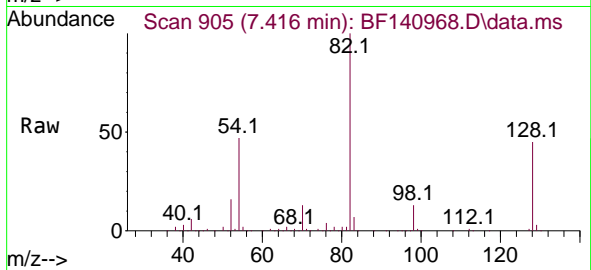


#23
 Nitrobenzene-d5
 Concen: 85.388 ng
 RT: 7.416 min Scan# 90
 Delta R.T. 0.000 min
 Lab File: BF140968.D
 Acq: 23 Dec 2024 16:14

Instrument :
 BNA_F
 ClientSampleId :
 ETGI-328

Tgt Ion: 82 Resp: 443376

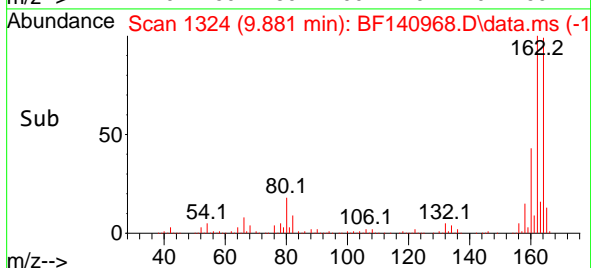
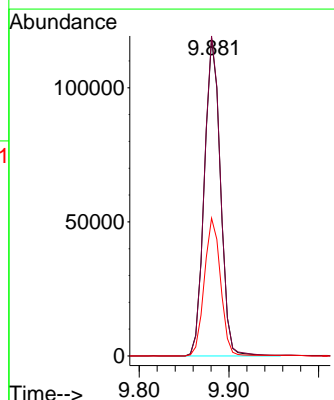
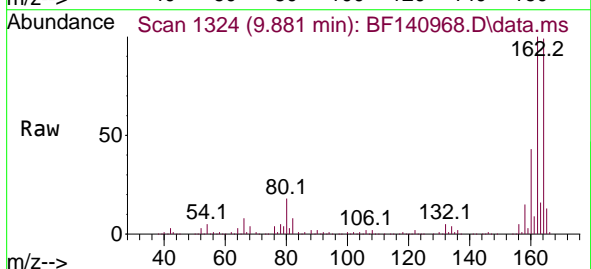
Ion	Ratio	Lower	Upper
82	100		
128	45.1	34.4	51.6
54	47.0	38.8	58.2

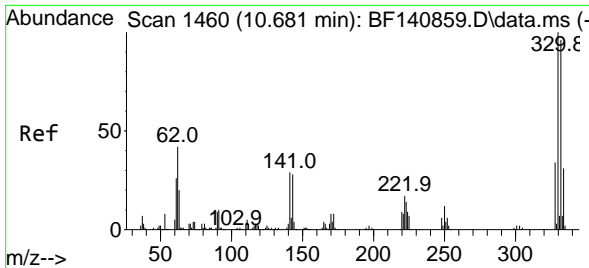


#39
 Acenaphthene-d10
 Concen: 20.000 ng
 RT: 9.881 min Scan# 1324
 Delta R.T. -0.006 min
 Lab File: BF140968.D
 Acq: 23 Dec 2024 16:14

Tgt Ion: 164 Resp: 147461

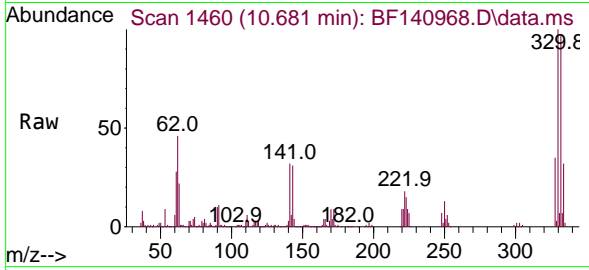
Ion	Ratio	Lower	Upper
164	100		
162	100.7	79.9	119.9
160	43.4	35.2	52.8



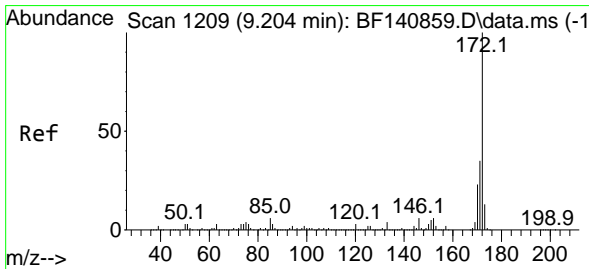
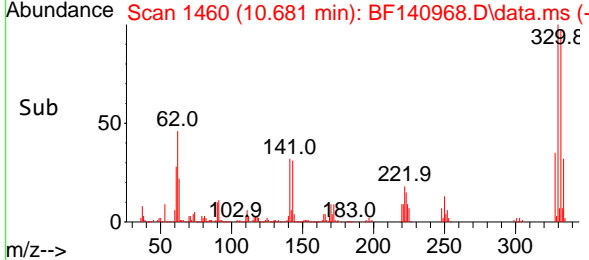
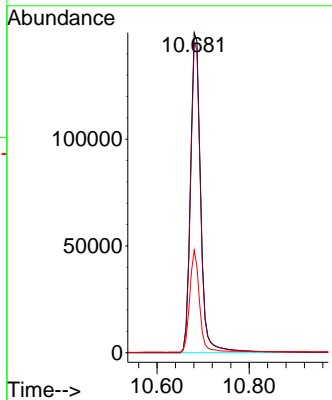


#42
 2,4,6-Tribromophenol
 Concen: 132.048 ng
 RT: 10.681 min Scan# 14
 Delta R.T. -0.000 min
 Lab File: BF140968.D
 Acq: 23 Dec 2024 16:14

Instrument :
 BNA_F
 ClientSampleId :
 ETGI-328

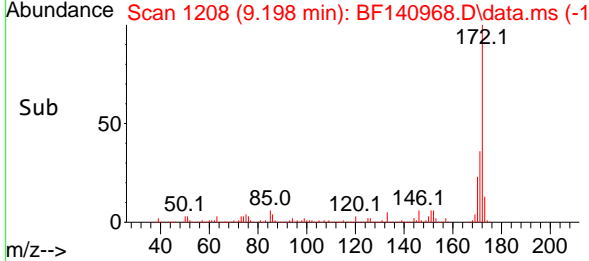
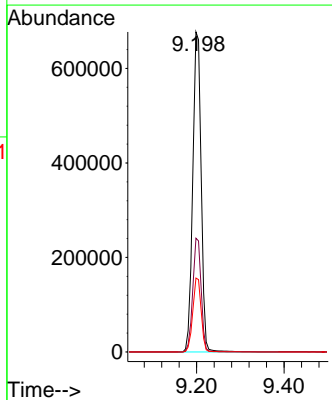
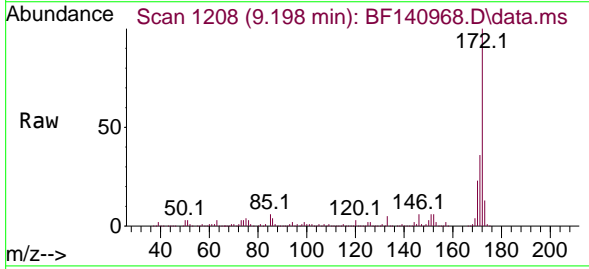


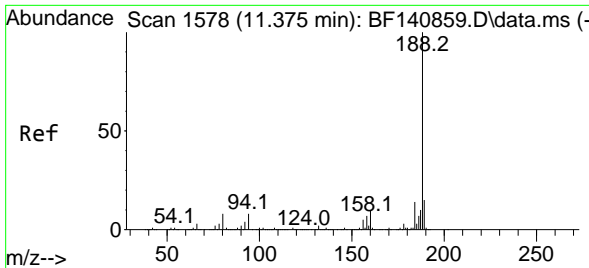
Tgt Ion:330 Resp: 230297
 Ion Ratio Lower Upper
 330 100
 332 95.9 76.2 114.4
 141 30.8 24.9 37.3



#45
 2-Fluorobiphenyl
 Concen: 84.647 ng
 RT: 9.198 min Scan# 1208
 Delta R.T. -0.006 min
 Lab File: BF140968.D
 Acq: 23 Dec 2024 16:14

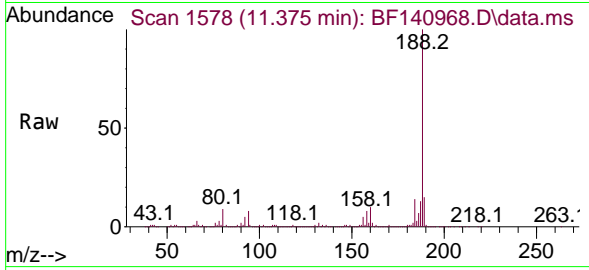
Tgt Ion:172 Resp: 907888
 Ion Ratio Lower Upper
 172 100
 171 35.5 28.4 42.6
 170 23.1 18.6 28.0



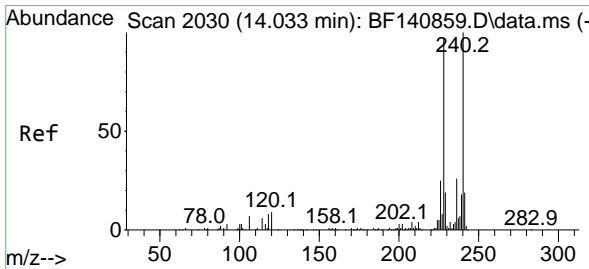
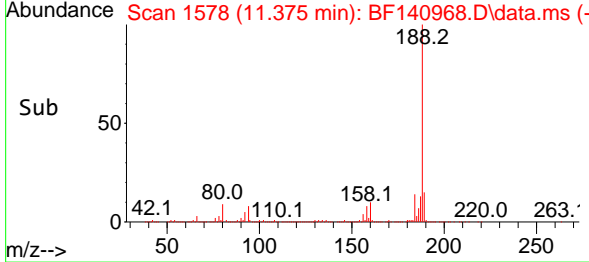
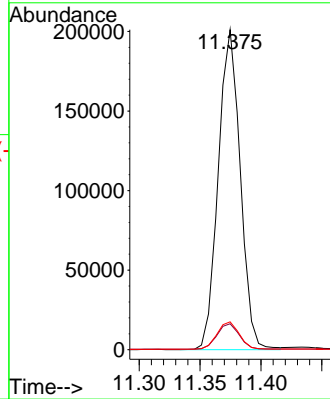


#64
 Phenanthrene-d10
 Concen: 20.000 ng
 RT: 11.375 min Scan# 11
 Delta R.T. 0.000 min
 Lab File: BF140968.D
 Acq: 23 Dec 2024 16:14

Instrument :
 BNA_F
 ClientSampleId :
 ETGI-328

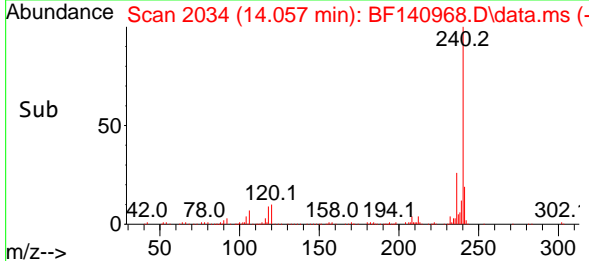
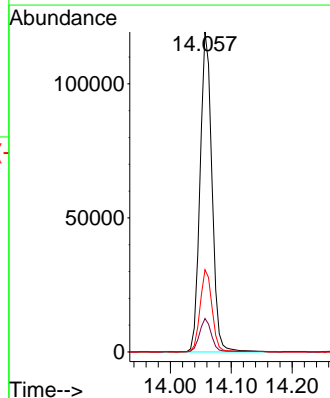
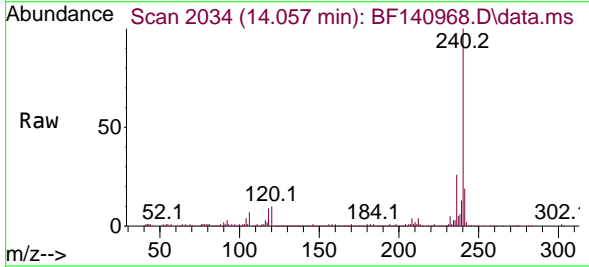


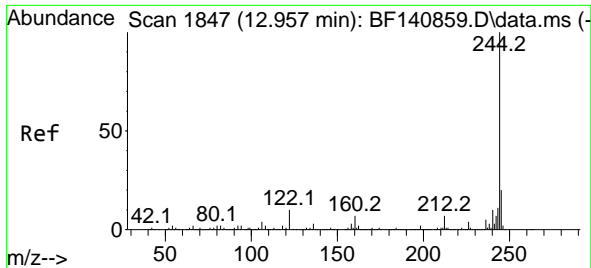
Tgt Ion:188 Resp: 253428
 Ion Ratio Lower Upper
 188 100
 94 8.1 6.4 9.6
 80 8.7 6.8 10.2



#76
 Chrysene-d12
 Concen: 20.000 ng
 RT: 14.057 min Scan# 2034
 Delta R.T. 0.024 min
 Lab File: BF140968.D
 Acq: 23 Dec 2024 16:14

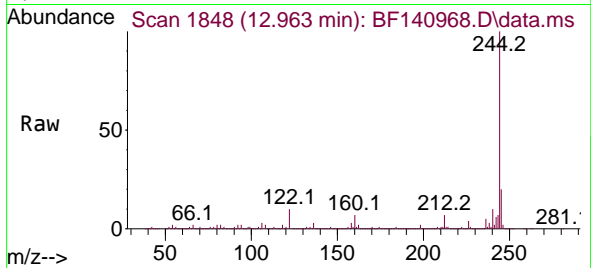
Tgt Ion:240 Resp: 162141
 Ion Ratio Lower Upper
 240 100
 120 10.4 7.6 11.4
 236 25.7 20.5 30.7



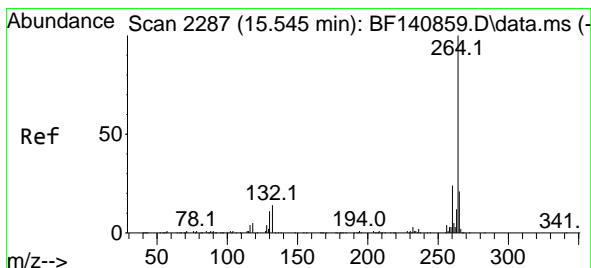
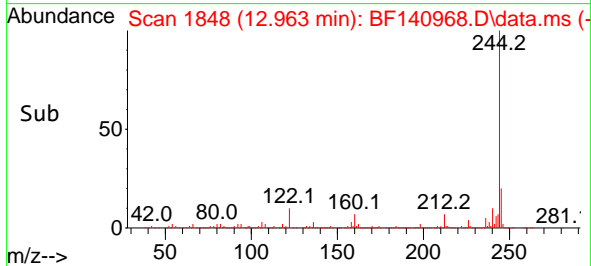
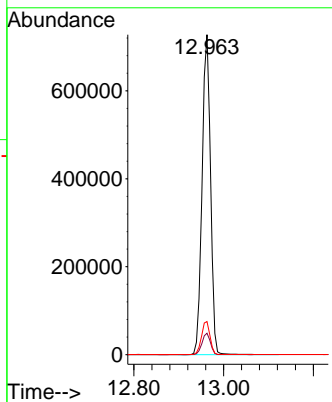


#79
 Terphenyl-d14
 Concen: 92.463 ng
 RT: 12.963 min Scan# 1848
 Delta R.T. 0.006 min
 Lab File: BF140968.D
 Acq: 23 Dec 2024 16:14

Instrument :
 BNA_F
 ClientSampleId :
 ETGI-328



Tgt Ion:244 Resp: 950746
 Ion Ratio Lower Upper
 244 100
 212 6.7 5.6 8.4
 122 10.3 8.2 12.2



#86
 Perylene-d12
 Concen: 20.000 ng
 RT: 15.604 min Scan# 2297
 Delta R.T. 0.059 min
 Lab File: BF140968.D
 Acq: 23 Dec 2024 16:14

Tgt Ion:264 Resp: 157264
 Ion Ratio Lower Upper
 264 100
 260 23.2 19.1 28.7
 265 21.2 17.0 25.4

