

Data Path : Z:\HPCHEM1\BNA F\DATA\BF122515\  
 Data File : BF084152.D  
 Acq On : 26 Dec 2015 2:21  
 Operator : UM/SJ  
 Sample : G4961-01  
 Misc :  
 ALS Vial : 69 Sample Multiplier: 1

Instrument :  
 BNA\_F  
 ClientSampleId :  
 PJ-SB-7(1.5-2.0)

Integration Parameters: rteint.p  
 Integrator: RTE  
 Smoothing : ON Filtering: 5  
 Sampling : 1 Min Area: 3 % of largest Peak  
 Start Thrs: 0.2 Max Peaks: 100  
 Stop Thrs : 0 Peak Location: TOP

If leading or trailing edge < 100 prefer < Baseline drop else tangent >  
 Peak separation: 5

Method : Z:\HPCHEM1\BNA F\METHODS\8270-BF122415.M  
 Title : ASP BNA STANDARDS FOR 5 POINT CALIBRATION

Signal : TIC

peak #	R.T. min	first scan	max scan	last scan	PK TY	peak height	corr. area	corr. % max.	% of total
1	3.698	135	141	146	rBV	27669	50003	2.90%	0.296%
2	4.979	250	253	262	rVB	205862	305620	17.74%	1.809%
3	5.356	284	286	290	rBV	53609	65248	3.79%	0.386%
4	5.424	290	292	294	rBV	1455412	1536710	89.22%	9.094%
5	5.630	308	310	312	rBV	33301	47954	2.78%	0.284%
6	6.327	368	371	375	rVB2	15302	29732	1.73%	0.176%
7	6.464	380	383	385	rBV	1425543	1652092	95.92%	9.777%
8	6.579	390	393	395	rVV	1786009	1722405	100.00%	10.193%
9	6.624	395	397	401	rVB	59341	68861	4.00%	0.408%
10	6.796	410	412	416	rVB	366230	346281	20.10%	2.049%
11	6.864	416	418	419	rBV2	14769	22912	1.33%	0.136%
12	6.956	424	426	429	rVB	1468387	1282198	74.44%	7.588%
13	7.367	459	462	464	rBV	1028897	985824	57.24%	5.834%
14	7.402	464	465	467	rVB	22306	25830	1.50%	0.153%
15	7.733	489	494	496	rVB3	8794	23003	1.34%	0.136%
16	7.847	499	504	506	rVV	16802	33658	1.95%	0.199%
17	7.893	506	508	512	rVB3	9602	24583	1.43%	0.145%
18	8.087	522	525	528	rBV	427353	543700	31.57%	3.218%
19	8.156	528	531	532	rVB	26739	25774	1.50%	0.153%
20	8.465	555	558	560	rBV2	14051	26361	1.53%	0.156%
21	8.522	560	563	565	rBV2	34485	54026	3.14%	0.320%
22	8.682	575	577	580	rBV	39978	37327	2.17%	0.221%
23	8.796	585	587	589	rVB	164410	137734	8.00%	0.815%
24	8.899	594	596	598	rVV	104055	91598	5.32%	0.542%
25	9.116	613	615	616	rVB2	32059	29557	1.72%	0.175%
26	9.162	616	619	621	rBV	1929581	1671657	97.05%	9.893%
27	9.253	624	627	629	rBV	34812	54627	3.17%	0.323%
28	9.356	635	636	638	rBV	14616	19555	1.14%	0.116%
29	9.425	640	642	644	rVB	39756	54655	3.17%	0.323%
30	9.493	647	648	650	rVV	73577	97076	5.64%	0.574%
31	9.528	650	651	652	rVV	69340	54815	3.18%	0.324%
32	9.562	652	654	657	rVV	272828	344442	20.00%	2.038%
33	9.619	657	659	663	rVB	42051	66354	3.85%	0.393%
34	9.779	671	673	675	rVB	53489	47281	2.75%	0.280%

Data Path : Z:\HPCHEM1\BNA F\DATA\BF122515\  
 Data File : BF084152.D  
 Acq On : 26 Dec 2015 2:21  
 Operator : UM/SJ  
 Sample : G4961-01  
 Misc :  
 ALS Vial : 69 Sample Multiplier: 1

Instrument :  
 BNA\_F  
 ClientSampleId :  
 PJ-SB-7(1.5-2.0)

Integration Parameters: rteint.p  
 Integrator: RTE  
 Smoothing : ON  
 Sampling : 1  
 Start Thrs: 0.2  
 Stop Thrs : 0

Filtering: 5  
 Min Area: 3 % of largest Peak  
 Max Peaks: 100  
 Peak Location: TOP

If leading or trailing edge < 100 prefer < Baseline drop else tangent >  
 Peak separation: 5

Method : Z:\HPCHEM1\BNA F\METHODS\8270-BF122415.M  
 Title : ASP BNA STANDARDS FOR 5 POINT CALIBRATION

35	9.836	676	678	680	rVV	481587	423931	24.61%	2.509%
36	9.882	680	682	685	rVB	12215	18542	1.08%	0.110%
37	9.950	685	688	689	rBV	14844	20379	1.18%	0.121%
38	9.996	689	692	694	rBV2	16161	24063	1.40%	0.142%
39	10.042	694	696	698	rVV	68537	65246	3.79%	0.386%
40	10.076	698	699	703	rVB2	19081	40141	2.33%	0.238%
41	10.156	705	706	707	rVV	34791	26702	1.55%	0.158%
42	10.179	707	708	712	rVB4	16342	26289	1.53%	0.156%
43	10.248	712	714	715	rBV	49965	67209	3.90%	0.398%
44	10.271	715	716	718	rVB	66462	64333	3.74%	0.381%
45	10.339	718	722	724	rVB4	12284	30545	1.77%	0.181%
46	10.373	724	725	729	rBV4	50061	65864	3.82%	0.390%
47	10.499	733	736	738	rVV2	42991	50081	2.91%	0.296%
48	10.545	738	740	742	rVB2	37861	44058	2.56%	0.261%
49	10.625	745	747	749	rVV	824247	835925	48.53%	4.947%
50	10.671	749	751	753	rVB2	18386	26636	1.55%	0.158%
51	10.762	756	759	761	rBV2	142296	207645	12.06%	1.229%
52	10.831	761	765	769	rVB2	12142	29818	1.73%	0.176%
53	10.933	772	774	779	rBV3	12652	28073	1.63%	0.166%
54	11.059	783	785	790	rVB2	35116	72913	4.23%	0.431%
55	11.128	790	791	793	rBV2	17154	19694	1.14%	0.117%
56	11.196	793	797	798	rBV2	59921	81590	4.74%	0.483%
57	11.219	798	799	802	rVB2	28579	36730	2.13%	0.217%
58	11.322	805	808	809	rBV	417050	375380	21.79%	2.221%
59	11.345	809	810	811	rVB	59584	41013	2.38%	0.243%
60	11.619	833	834	836	rVB	46206	32068	1.86%	0.190%
61	11.825	850	852	853	rBV	24629	23967	1.39%	0.142%
62	11.848	853	854	856	rVB	52386	50887	2.95%	0.301%
63	11.928	859	861	862	rBV	38571	40341	2.34%	0.239%
64	12.031	866	870	871	rBV2	29612	54791	3.18%	0.324%
65	12.122	876	878	880	rBV3	14601	21016	1.22%	0.124%
66	12.271	888	891	892	rBV3	17952	25304	1.47%	0.150%
67	12.305	892	894	897	rVB4	16136	34340	1.99%	0.203%
68	12.374	897	900	901	rBV	54898	61427	3.57%	0.364%
69	12.408	901	903	906	rVB2	44878	67339	3.91%	0.399%
70	12.454	906	907	910	rBV2	17594	23920	1.39%	0.142%
71	12.534	912	914	915	rBV	32898	25434	1.48%	0.151%

Data Path : Z:\HPCHEM1\BNA F\DATA\BF122515\  
 Data File : BF084152.D  
 Acq On : 26 Dec 2015 2:21  
 Operator : UM/SJ  
 Sample : G4961-01  
 Misc :  
 ALS Vial : 69 Sample Multiplier: 1

Instrument :  
 BNA\_F  
 ClientSampleId :  
 PJ-SB-7(1.5-2.0)

Integration Parameters: rteint.p  
 Integrator: RTE  
 Smoothing : ON Filtering: 5  
 Sampling : 1 Min Area: 3 % of largest Peak  
 Start Thrs: 0.2 Max Peaks: 100  
 Stop Thrs : 0 Peak Location: TOP

If leading or trailing edge < 100 prefer < Baseline drop else tangent >  
 Peak separation: 5

Method : Z:\HPCHEM1\BNA F\METHODS\8270-BF122415.M  
 Title : ASP BNA STANDARDS FOR 5 POINT CALIBRATION

72	12.728	929	931	933	rBV2	27536	37205	2.16%	0.220%
73	12.785	935	936	937	rVV	43752	33692	1.96%	0.199%
74	12.819	937	939	942	rVB	23322	30881	1.79%	0.183%
75	12.899	944	946	949	rVB	907027	1165593	67.67%	6.898%
76	13.082	959	962	965	rBV2	15627	34742	2.02%	0.206%
77	13.139	965	967	970	rVV2	39663	38106	2.21%	0.226%
78	13.197	970	972	974	rVV3	17450	24832	1.44%	0.147%
79	13.482	995	997	998	rBV	33183	28791	1.67%	0.170%
80	13.814	1024	1026	1029	rVB3	44214	69489	4.03%	0.411%
81	13.962	1036	1039	1041	rBV	319991	353985	20.55%	2.095%
82	14.122	1051	1053	1057	rVB2	29481	39736	2.31%	0.235%
83	14.431	1078	1080	1081	rBV	41030	46448	2.70%	0.275%
84	15.391	1161	1164	1167	rVB	158606	231068	13.42%	1.367%

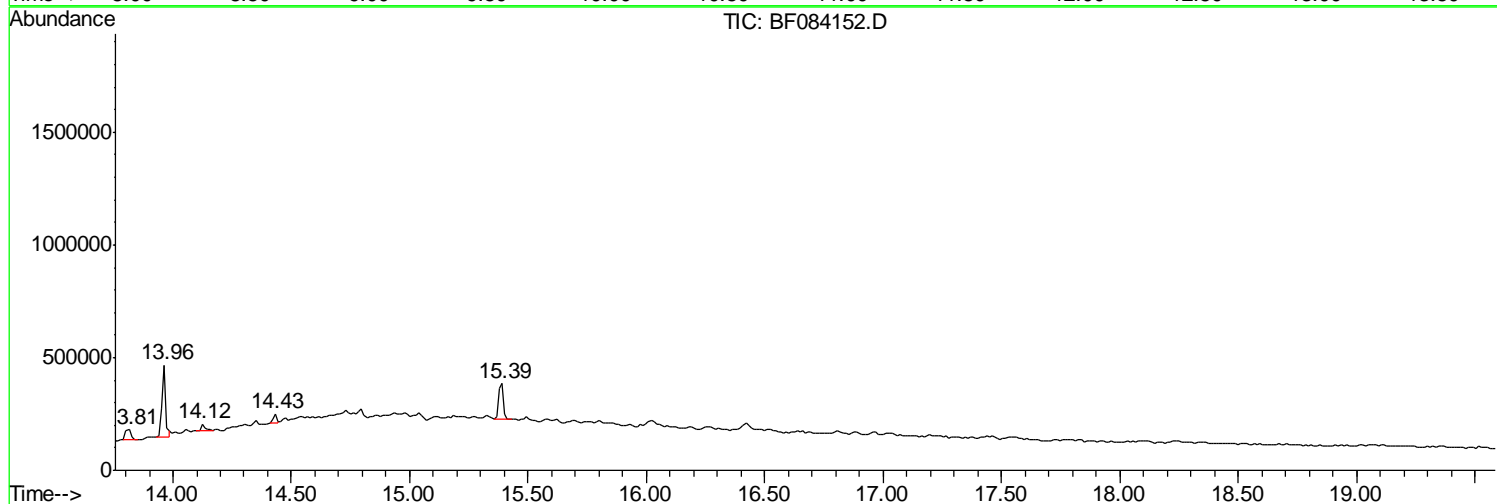
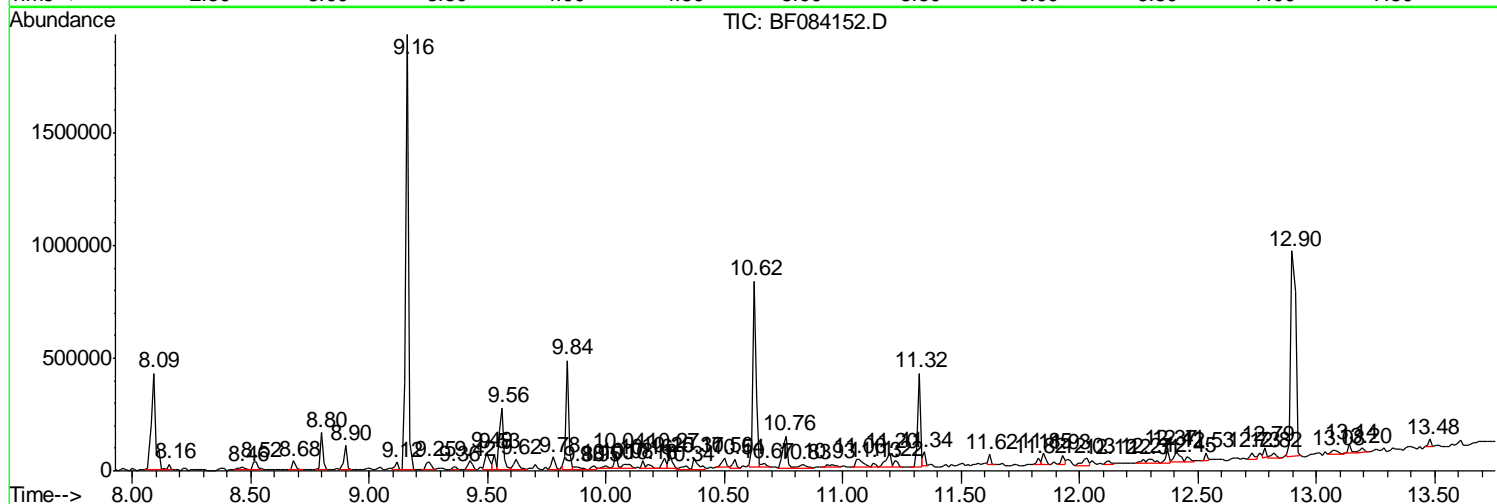
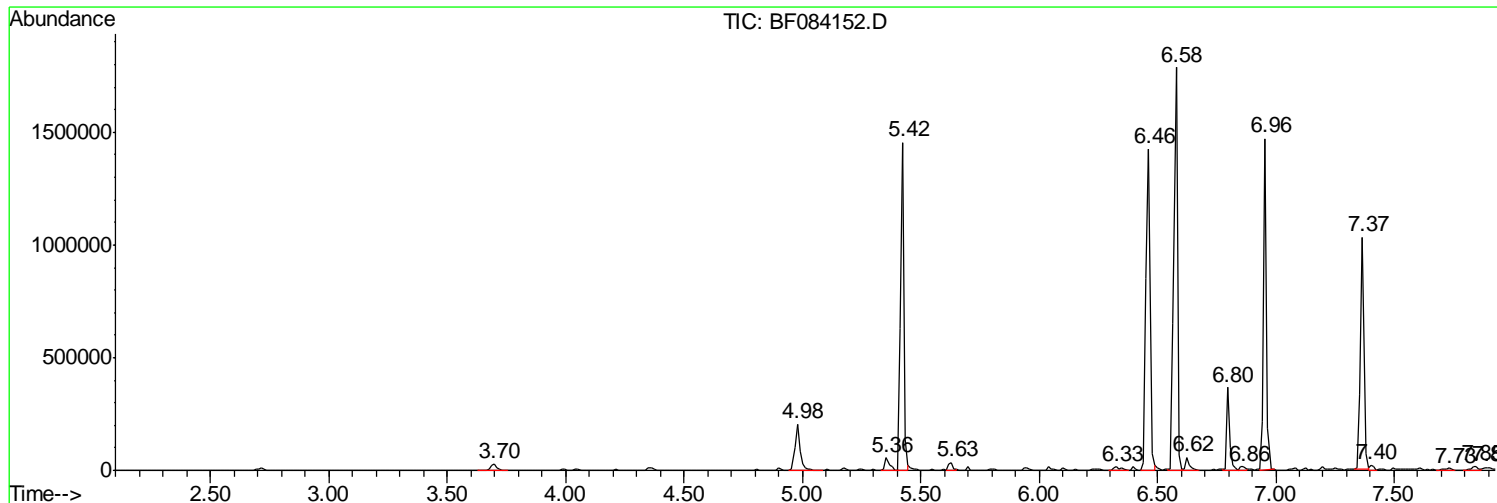
Sum of corrected areas: 16897655

Data Path : Z:\HPCHEM1\BNA F\DATA\BF122515\  
 Data File : BF084152.D  
 Acq On : 26 Dec 2015 2:21  
 Operator : UM/SJ  
 Sample : G4961-01  
 Misc :  
 ALS Vial : 69 Sample Multiplier: 1

Instrument :  
 BNA\_F  
 ClientSampleID :  
 PJ-SB-7(1.5-2.0)

Quant Method : Z:\HPCHEM1\BNA F\METHODS\8270-BF122415.M  
 Quant Title : ASP BNA STANDARDS FOR 5 POINT CALIBRATION

TIC Library : C:\DATABASE\NIST02.L  
 TIC Integration Parameters: LSCINT.P



Data Path : Z:\HPCHEM1\BNA F\DATA\BF122515\  
 Data File : BF084152.D  
 Acq On : 26 Dec 2015 2:21  
 Operator : UM/SJ  
 Sample : G4961-01  
 Misc :  
 ALS Vial : 69 Sample Multiplier: 1

Instrument :  
 BNA\_F  
 ClientSampled :  
 PJ-SB-7(1.5-2.0)

Quant Method : Z:\HPCHEM1\BNA F\METHODS\8270-BF122415.M  
 Quant Title : ASP BNA STANDARDS FOR 5 POINT CALIBRATION

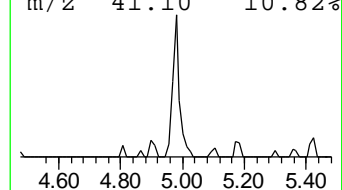
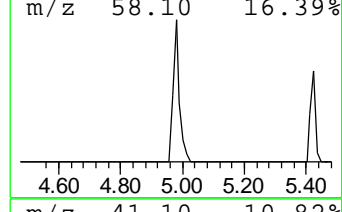
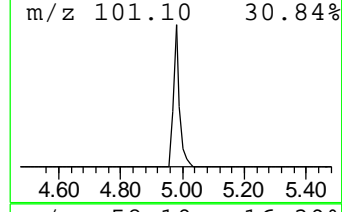
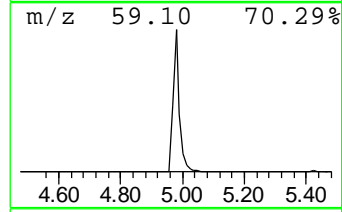
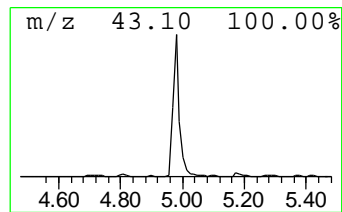
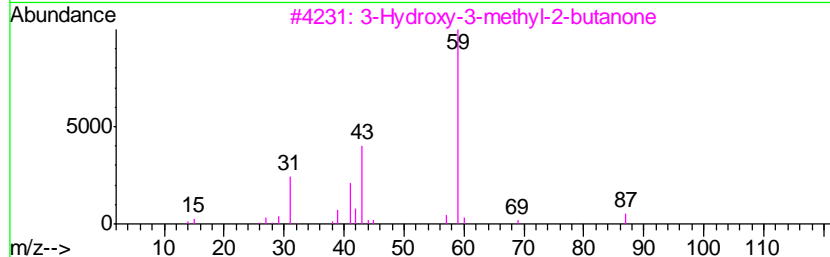
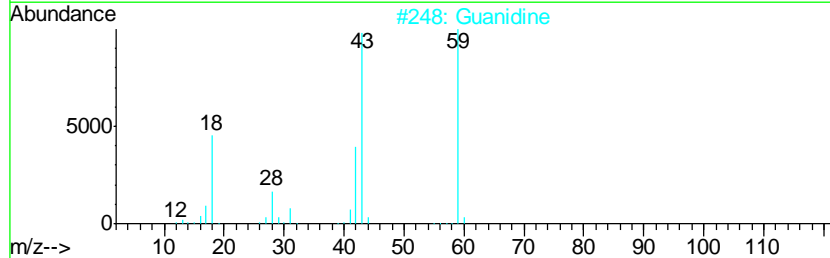
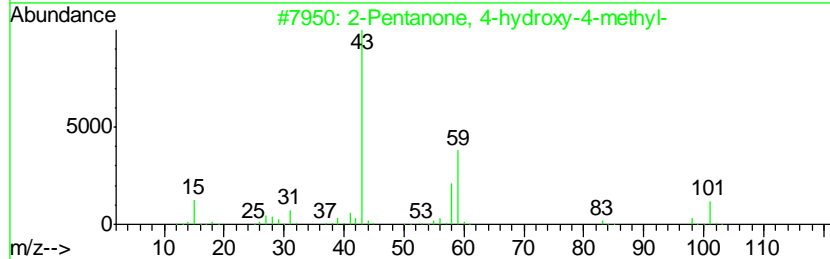
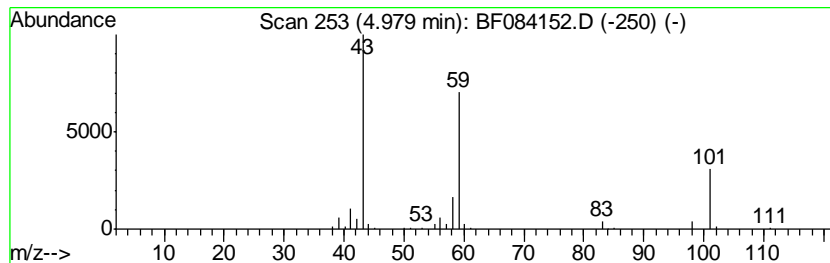
TIC Library : C:\DATABASE\NIST02.L  
 TIC Integration Parameters: LSCINT.P

\*\*\*\*\*  
 Peak Number 2 2-Pentanone, 4-hydroxy-4-me... Concentration Rank 3

R.T.	EstConc	Area	Relative to ISTD	R.T.
4.98	17.65 ng	305620	1,4-Dichlorobenzene-d4	6.80

Hit#	of	Tentative ID	MW	MolForm	CAS#	Qual
1	5	2-Pentanone, 4-hydroxy-4-methyl-	116	C6H12O2	000123-42-2	56
2		Guanidine	59	CH5N3	000113-00-8	43
3		3-Hydroxy-3-methyl-2-butanone	102	C5H10O2	000115-22-0	25
4		Acetic acid, cyano-, 1,1-dimethy...	141	C7H11NO2	001116-98-9	25
5		Acetone	58	C3H6O	000067-64-1	10



Data Path : Z:\HPCHEM1\BNA F\DATA\BF122515\  
 Data File : BF084152.D  
 Acq On : 26 Dec 2015 2:21  
 Operator : UM/SJ  
 Sample : G4961-01  
 Misc :  
 ALS Vial : 69 Sample Multiplier: 1

Instrument :  
 BNA\_F  
 ClientSampleId :  
 PJ-SB-7(1.5-2.0)

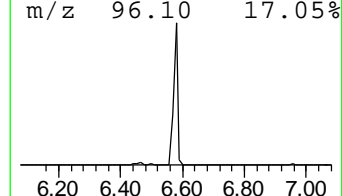
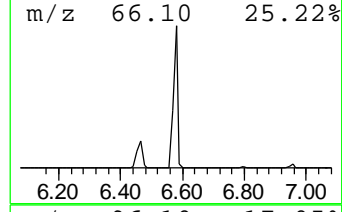
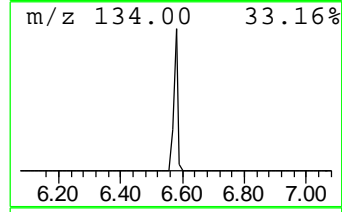
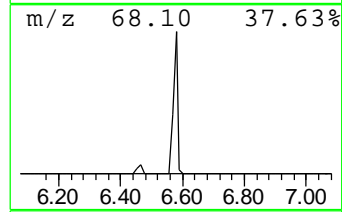
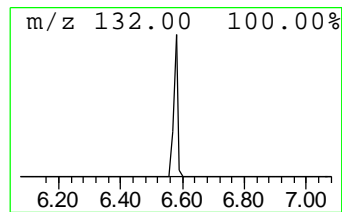
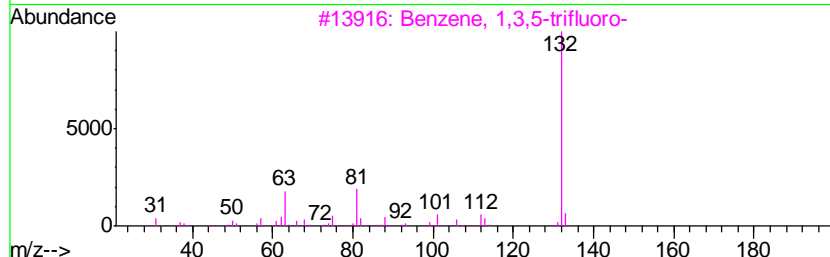
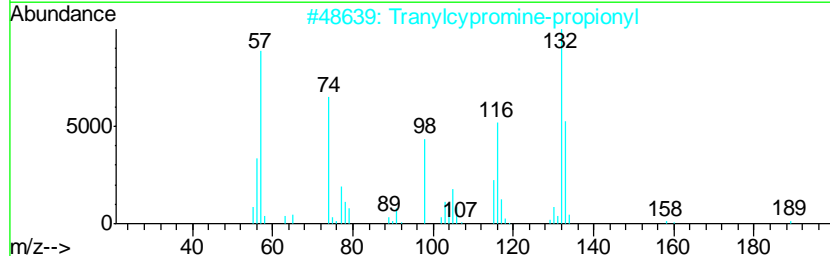
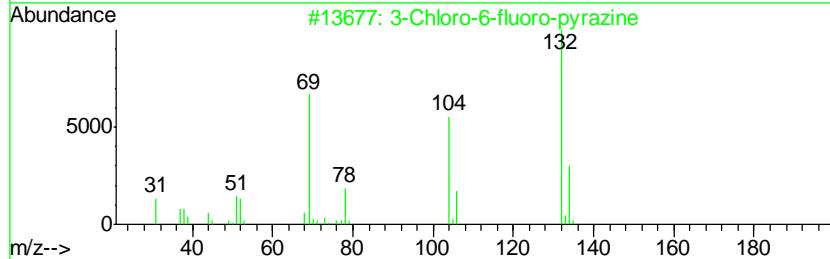
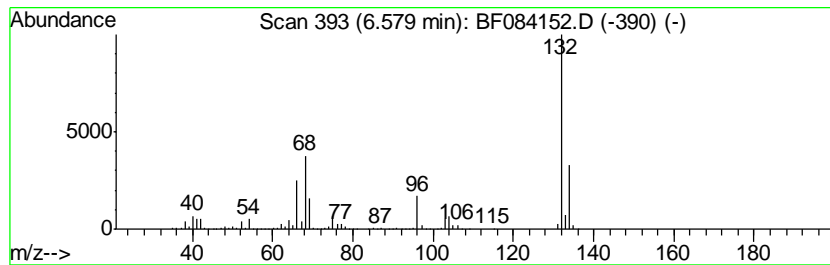
Quant Method : Z:\HPCHEM1\BNA F\METHODS\8270-BF122415.M  
 Quant Title : ASP BNA STANDARDS FOR 5 POINT CALIBRATION

TIC Library : C:\DATABASE\NIST02.L  
 TIC Integration Parameters: LSCINT.P

\*\*\*\*\*  
 Peak Number 4 unknown6.58 Concentration Rank 1

R.T.	EstConc	Area	Relative to ISTD	R.T.
6.58	99.48 ng	1722410	1,4-Dichlorobenzene-d4	6.80

Hit#	of	Tentative ID	MW	MolForm	CAS#	Qual
1	5	3-Chloro-6-fluoro-pyrazine	132	C4H2ClFN2	1000146-10-7	25
2		Tranlycypromine-propionyl	189	C12H15NO	1000123-86-3	12
3		Benzene, 1,3,5-trifluoro-	132	C6H3F3	000372-38-3	9
4		Bicyclo[4.2.0]octa-1,3,5-triene,...	132	C10H12	028749-81-7	9
5		(E)-3-Chloro-2-methyl-2-pentenal	132	C6H9ClO	031357-76-3	9



Data Path : Z:\HPCHEM1\BNA F\DATA\BF122515\  
 Data File : BF084152.D  
 Acq On : 26 Dec 2015 2:21  
 Operator : UM/SJ  
 Sample : G4961-01  
 Misc :  
 ALS Vial : 69 Sample Multiplier: 1

Instrument :  
 BNA\_F  
 ClientSampleID :  
 PJ-SB-7(1.5-2.0)

Quant Method : Z:\HPCHEM1\BNA F\METHODS\8270-BF122415.M  
 Quant Title : ASP BNA STANDARDS FOR 5 POINT CALIBRATION

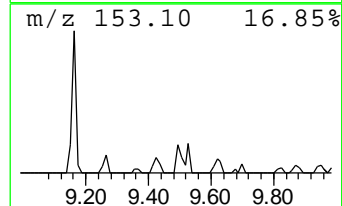
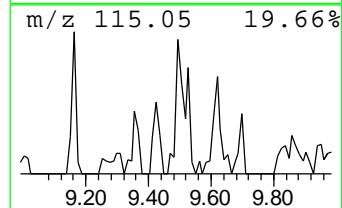
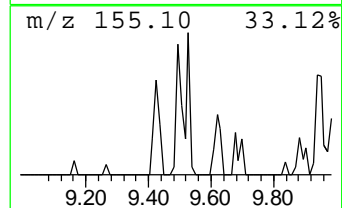
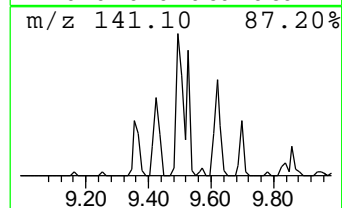
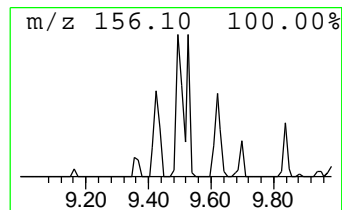
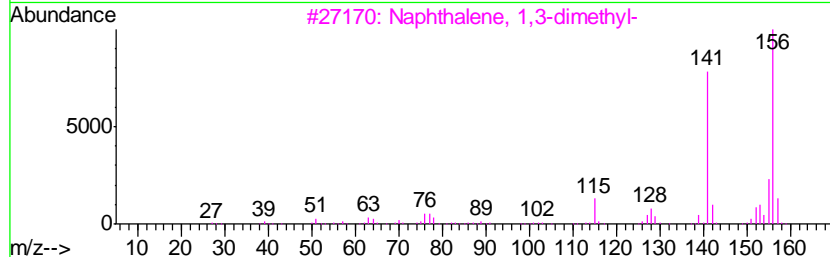
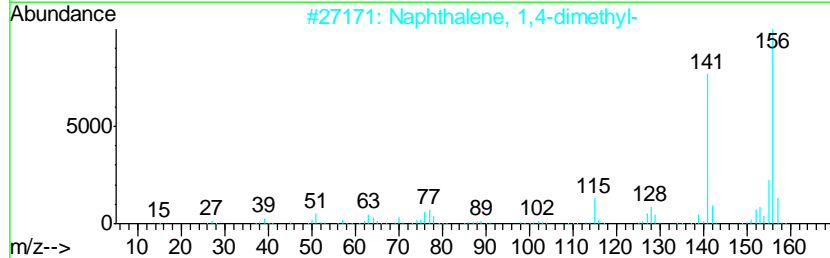
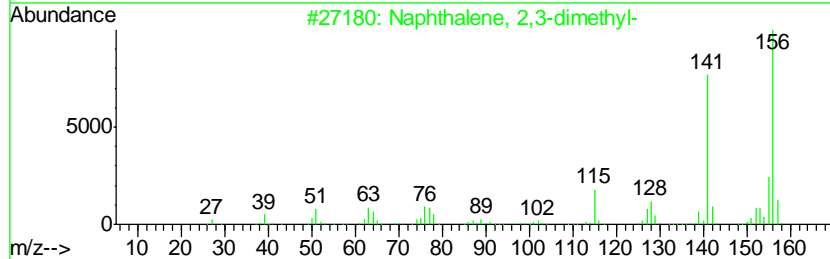
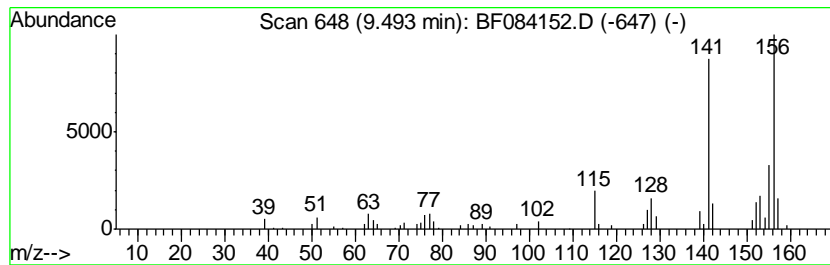
TIC Library : C:\DATABASE\NIST02.L  
 TIC Integration Parameters: LSCINT.P

\*\*\*\*\*  
 Peak Number 8 Naphthalene, 2,3-dimethyl- Concentration Rank 5

R.T.	EstConc	Area	Relative to ISTD	R.T.
9.49	4.58 ng	97076	Acenaphthene-d10	9.84

Hit#	of	Tentative ID	MW	MolForm	CAS#	Qual
1	5	Naphthalene, 2,3-dimethyl-	156	C12H12	000581-40-8	97
2		Naphthalene, 1,4-dimethyl-	156	C12H12	000571-58-4	97
3		Naphthalene, 1,3-dimethyl-	156	C12H12	000575-41-7	96
4		Naphthalene, 1,6-dimethyl-	156	C12H12	000575-43-9	96
5		Naphthalene, 1,5-dimethyl-	156	C12H12	000571-61-9	95



Data Path : Z:\HPCHEM1\BNA F\DATA\BF122515\  
 Data File : BF084152.D  
 Acq On : 26 Dec 2015 2:21  
 Operator : UM/SJ  
 Sample : G4961-01  
 Misc :  
 ALS Vial : 69 Sample Multiplier: 1

Instrument :  
 BNA\_F  
 ClientSampled :  
 PJ-SB-7(1.5-2.0)

Quant Method : Z:\HPCHEM1\BNA F\METHODS\8270-BF122415.M  
 Quant Title : ASP BNA STANDARDS FOR 5 POINT CALIBRATION

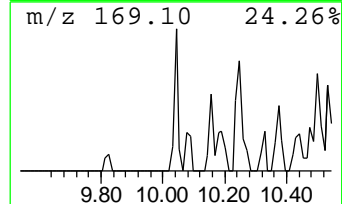
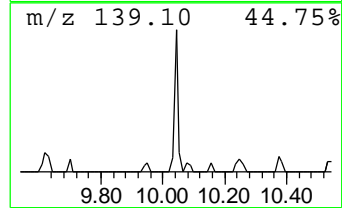
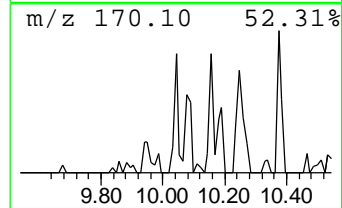
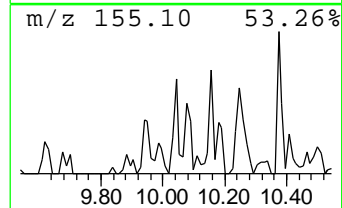
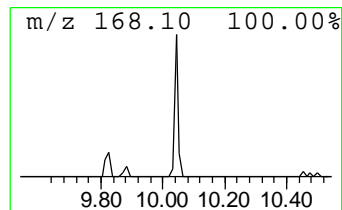
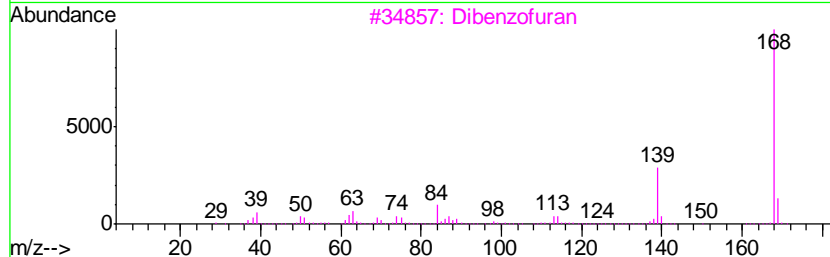
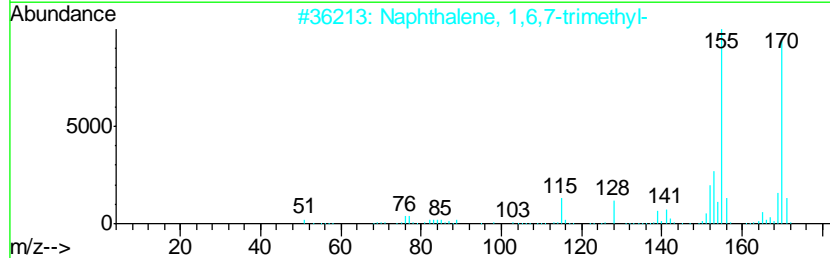
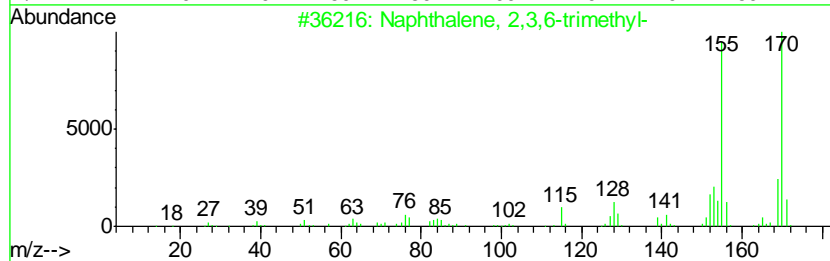
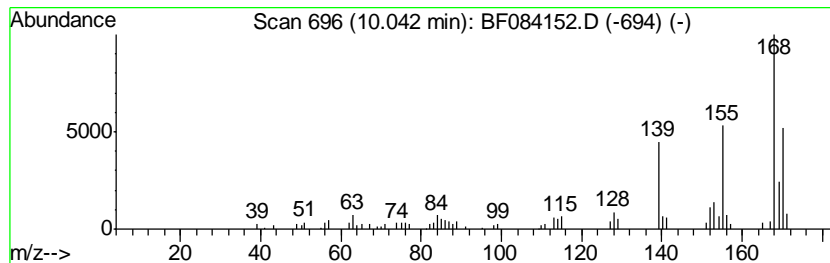
TIC Library : C:\DATABASE\NIST02.L  
 TIC Integration Parameters: LSCINT.P

\*\*\*\*\*  
 Peak Number 10 Naphthalene, 2,3,6-trimethyl- Concentration Rank 17

R.T.	EstConc	Area	Relative to ISTD	R.T.
10.04	3.08 ng	65246	Acenaphthene-d10	9.84

Hit#	of	Tentative ID	MW	MolForm	CAS#	Qual
1	5	Naphthalene, 2,3,6-trimethyl-	170	C13H14	000829-26-5	83
2		Naphthalene, 1,6,7-trimethyl-	170	C13H14	002245-38-7	83
3		Dibenzofuran	168	C12H8O	000132-64-9	45
4		Naphthalene, 1,4,5-trimethyl-	170	C13H14	002131-41-1	42
5		3-(2-Methyl-propenyl)-1H-indene	170	C13H14	1000187-78-5	41





Data Path : Z:\HPCHEM1\BNA F\DATA\BF122515\  
 Data File : BF084152.D  
 Acq On : 26 Dec 2015 2:21  
 Operator : UM/SJ  
 Sample : G4961-01  
 Misc :  
 ALS Vial : 69 Sample Multiplier: 1

Instrument :  
 BNA\_F  
 ClientSampled :  
 PJ-SB-7(1.5-2.0)

Quant Method : Z:\HPCHEM1\BNA F\METHODS\8270-BF122415.M  
 Quant Title : ASP BNA STANDARDS FOR 5 POINT CALIBRATION

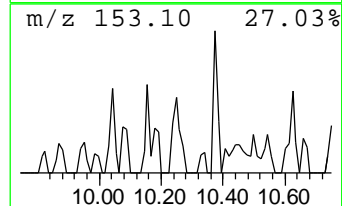
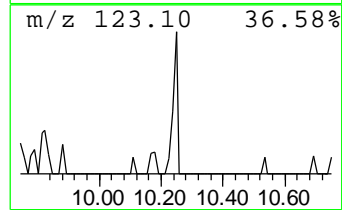
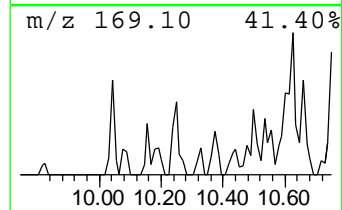
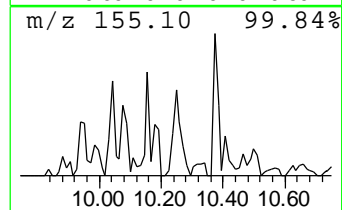
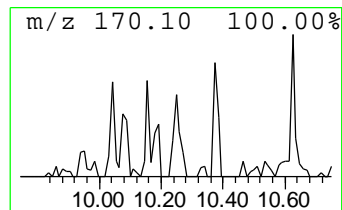
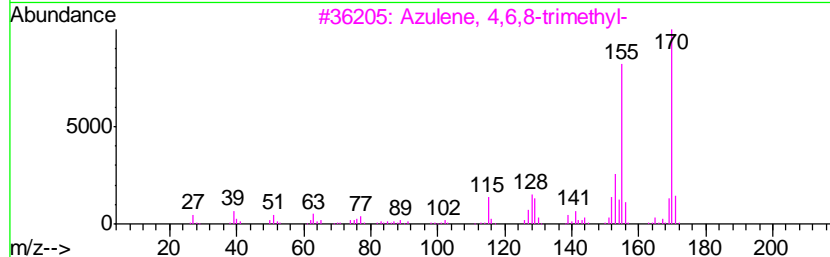
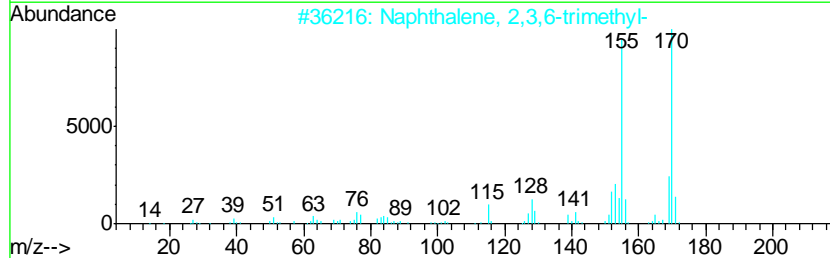
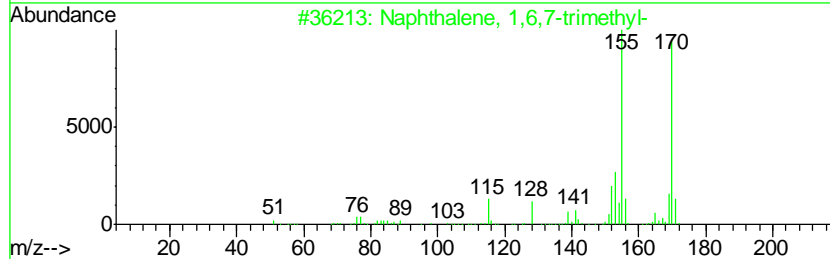
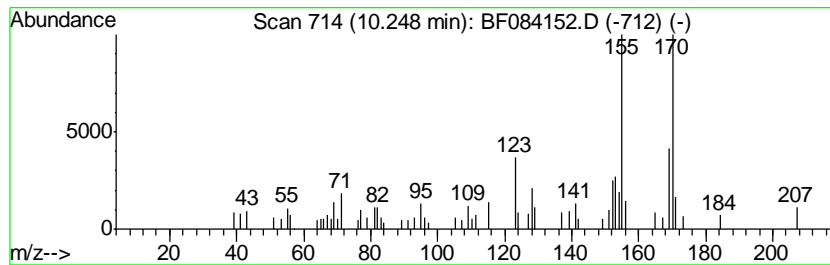
TIC Library : C:\DATABASE\NIST02.L  
 TIC Integration Parameters: LSCINT.P

\*\*\*\*\*  
 Peak Number 11 Naphthalene, 1,6,7-trimethyl- Concentration Rank 14

R.T.	EstConc	Area	Relative to ISTD	R.T.
10.25	3.17 ng	67209	Acenaphthene-d10	9.84

Hit#	of	Tentative ID	MW	MolForm	CAS#	Qual
1	5	Naphthalene, 1,6,7-trimethyl-	170	C13H14	002245-38-7	95
2		Naphthalene, 2,3,6-trimethyl-	170	C13H14	000829-26-5	95
3		Azulene, 4,6,8-trimethyl-	170	C13H14	000941-81-1	89
4		Naphthalene, 1,4,6-trimethyl-	170	C13H14	002131-42-2	89
5		Naphthalene, 1,4,5-trimethyl-	170	C13H14	002131-41-1	70



Data Path : Z:\HPCHEM1\BNA F\DATA\BF122515\  
 Data File : BF084152.D  
 Acq On : 26 Dec 2015 2:21  
 Operator : UM/SJ  
 Sample : G4961-01  
 Misc :  
 ALS Vial : 69 Sample Multiplier: 1

Instrument :  
 BNA\_F  
 ClientSampleID :  
 PJ-SB-7(1.5-2.0)

Quant Method : Z:\HPCHEM1\BNA F\METHODS\8270-BF122415.M  
 Quant Title : ASP BNA STANDARDS FOR 5 POINT CALIBRATION

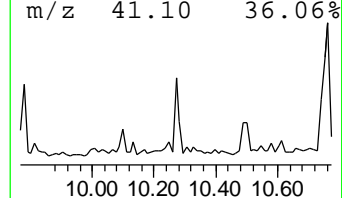
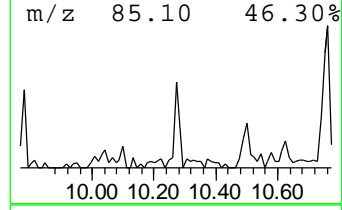
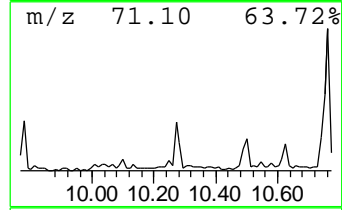
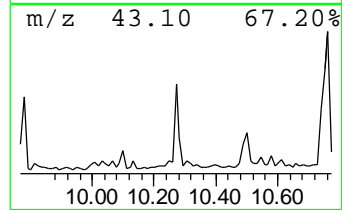
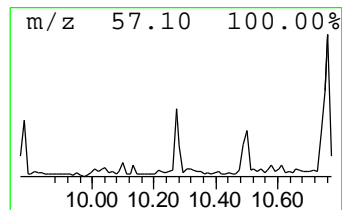
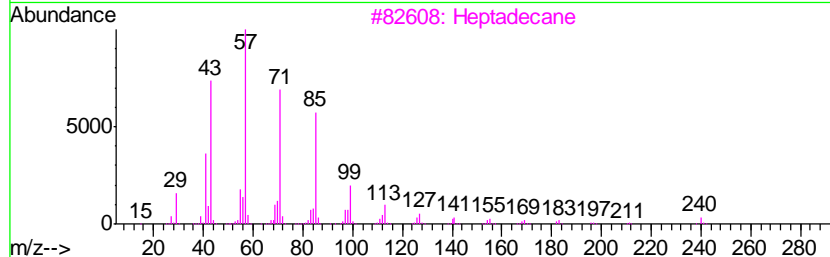
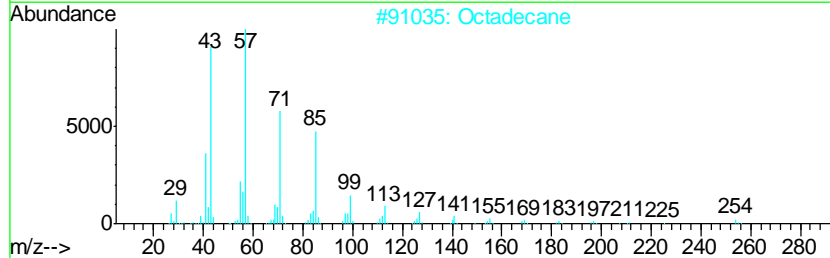
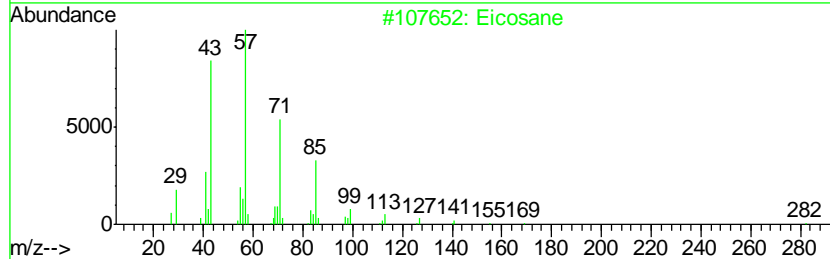
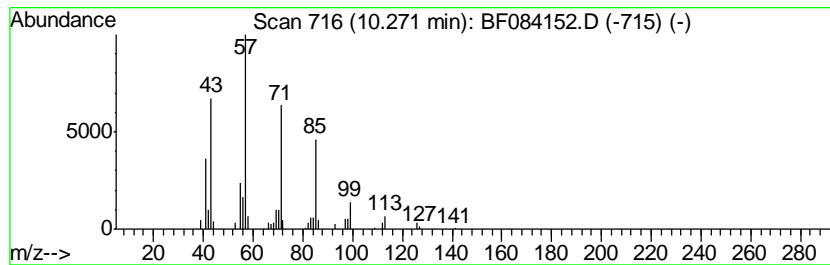
TIC Library : C:\DATABASE\NIST02.L  
 TIC Integration Parameters: LSCINT.P

\*\*\*\*\*  
 Peak Number 12 Eicosane Concentration Rank 18

R.T.	EstConc	Area	Relative to ISTD	R.T.
10.27	3.04 ng	64333	Acenaphthene-d10	9.84

Hit#	of	Tentative ID	MW	MolForm	CAS#	Qual
1	5	Eicosane	282	C20H42	000112-95-8	91
2		Octadecane	254	C18H38	000593-45-3	90
3		Heptadecane	240	C17H36	000629-78-7	86
4		Tetracosane	338	C24H50	000646-31-1	83
5		Tetradecane	198	C14H30	000629-59-4	78



Data Path : Z:\HPCHEM1\BNA F\DATA\BF122515\  
 Data File : BF084152.D  
 Acq On : 26 Dec 2015 2:21  
 Operator : UM/SJ  
 Sample : G4961-01  
 Misc :  
 ALS Vial : 69 Sample Multiplier: 1

Instrument :  
 BNA\_F  
 ClientSampled :  
 PJ-SB-7(1.5-2.0)

Quant Method : Z:\HPCHEM1\BNA F\METHODS\8270-BF122415.M  
 Quant Title : ASP BNA STANDARDS FOR 5 POINT CALIBRATION

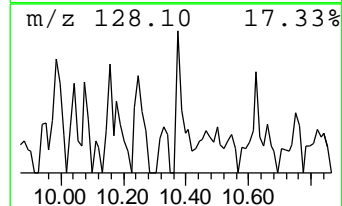
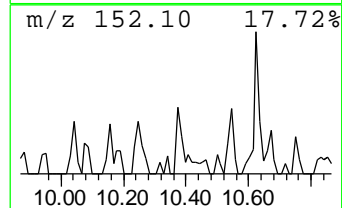
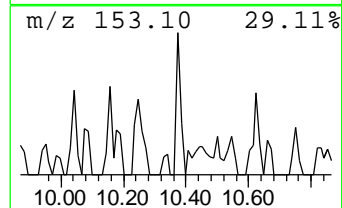
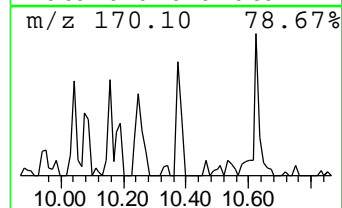
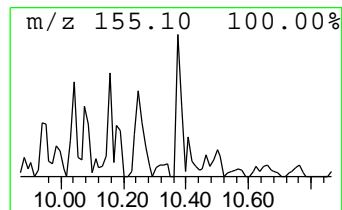
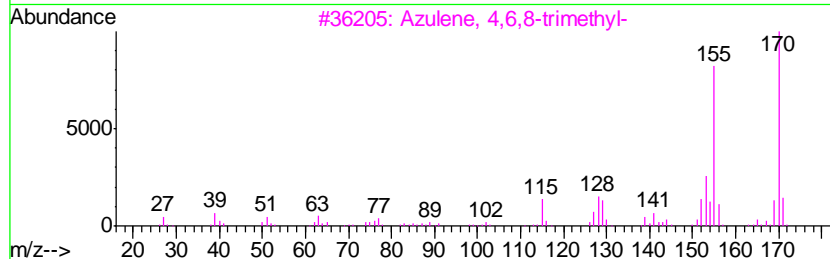
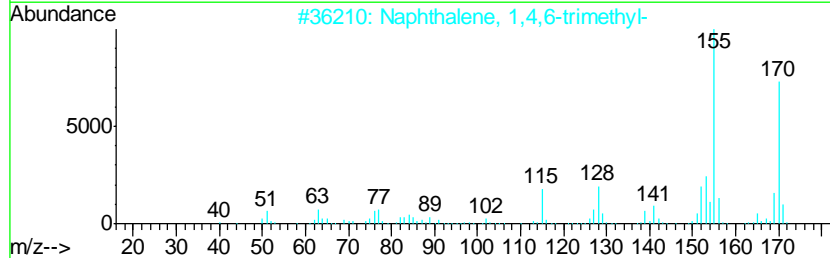
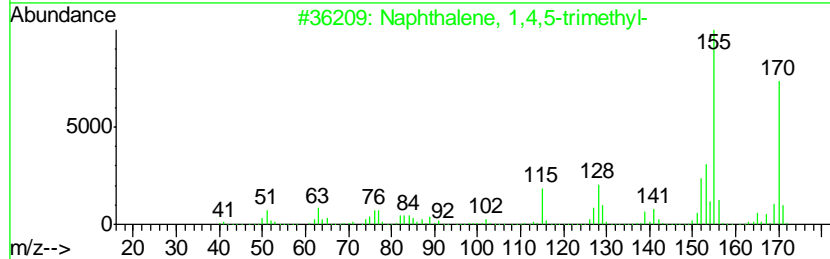
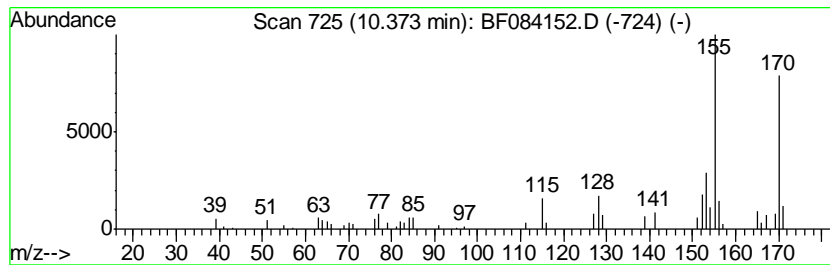
TIC Library : C:\DATABASE\NIST02.L  
 TIC Integration Parameters: LSCINT.P

\*\*\*\*\*  
 Peak Number 13 Naphthalene, 1,4,5-trimethyl- Concentration Rank 16

R.T.	EstConc	Area	Relative to ISTD	R.T.
10.37	3.11 ng	65864	Acenaphthene-d10	9.84

Hit#	of	Tentative ID	MW	MolForm	CAS#	Qual
1	5	Naphthalene, 1,4,5-trimethyl-	170	C13H14	002131-41-1	97
2		Naphthalene, 1,4,6-trimethyl-	170	C13H14	002131-42-2	94
3		Azulene, 4,6,8-trimethyl-	170	C13H14	000941-81-1	94
4		Naphthalene, 1,6,7-trimethyl-	170	C13H14	002245-38-7	93
5		Naphthalene, 2,3,6-trimethyl-	170	C13H14	000829-26-5	93



Data Path : Z:\HPCHEM1\BNA F\DATA\BF122515\  
 Data File : BF084152.D  
 Acq On : 26 Dec 2015 2:21  
 Operator : UM/SJ  
 Sample : G4961-01  
 Misc :  
 ALS Vial : 69 Sample Multiplier: 1

Instrument :  
 BNA\_F  
 ClientSampleID :  
 PJ-SB-7(1.5-2.0)

Quant Method : Z:\HPCHEM1\BNA F\METHODS\8270-BF122415.M  
 Quant Title : ASP BNA STANDARDS FOR 5 POINT CALIBRATION

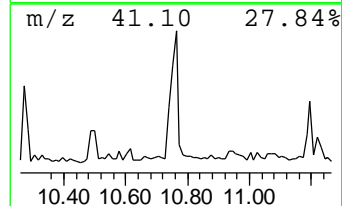
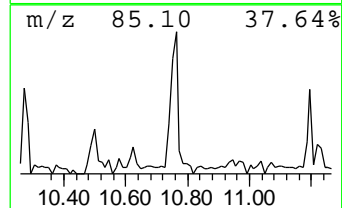
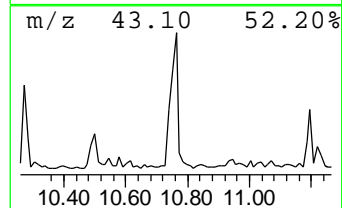
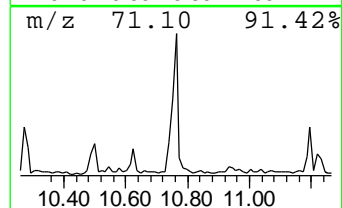
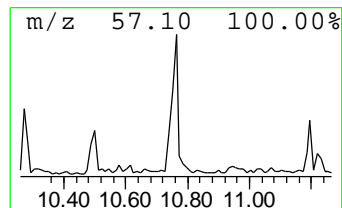
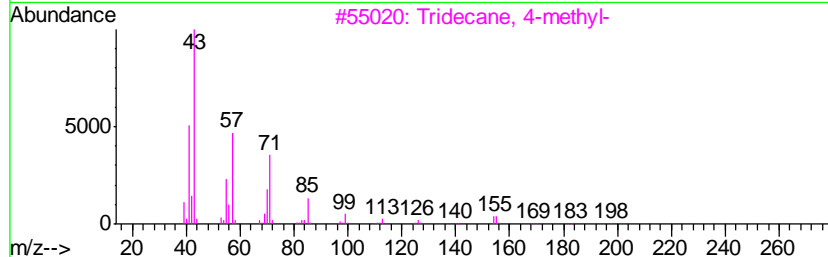
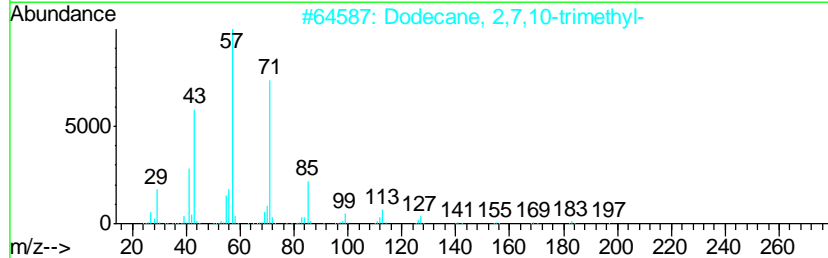
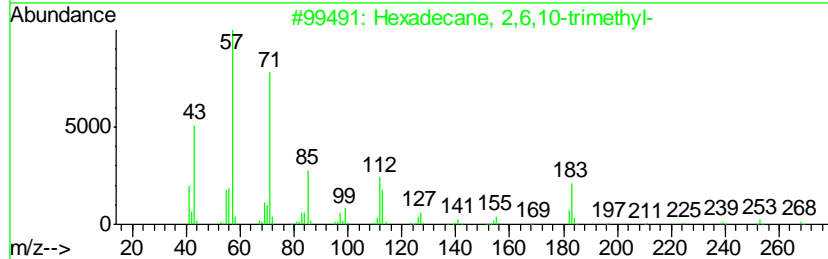
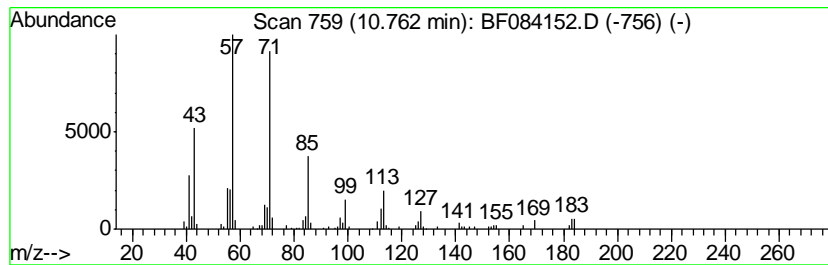
TIC Library : C:\DATABASE\NIST02.L  
 TIC Integration Parameters: LSCINT.P

\*\*\*\*\*  
 Peak Number 14 Hexadecane, 2,6,10-trimethyl- Concentration Rank 4

R.T.	EstConc	Area	Relative to ISTD	R.T.
10.76	11.06 ng	207645	Phenanthrene-d10	11.32

Hit#	of	Tentative ID	MW	MolForm	CAS#	Qual
1	5	Hexadecane, 2,6,10-trimethyl-	268	C19H40	055000-52-7	72
2		Dodecane, 2,7,10-trimethyl-	212	C15H32	074645-98-0	64
3		Tridecane, 4-methyl-	198	C14H30	026730-12-1	64
4		Hexadecane, 2,6,10,14-tetramethyl-	282	C20H42	000638-36-8	58
5		Tridecane, 6-methyl-	198	C14H30	013287-21-3	53



Data Path : Z:\HPCHEM1\BNA F\DATA\BF122515\  
 Data File : BF084152.D  
 Acq On : 26 Dec 2015 2:21  
 Operator : UM/SJ  
 Sample : G4961-01  
 Misc :  
 ALS Vial : 69 Sample Multiplier: 1

Instrument :  
 BNA\_F  
 ClientSampleID :  
 PJ-SB-7(1.5-2.0)

Quant Method : Z:\HPCHEM1\BNA F\METHODS\8270-BF122415.M  
 Quant Title : ASP BNA STANDARDS FOR 5 POINT CALIBRATION

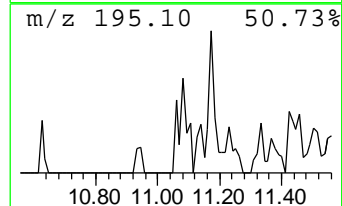
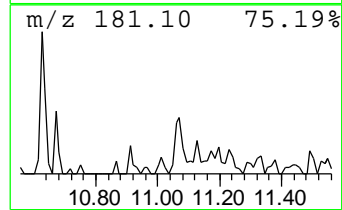
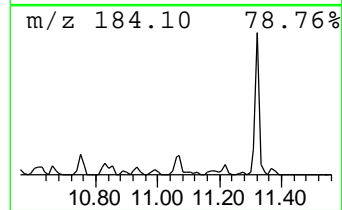
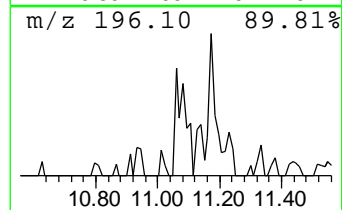
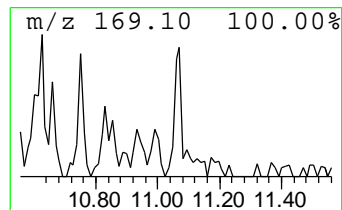
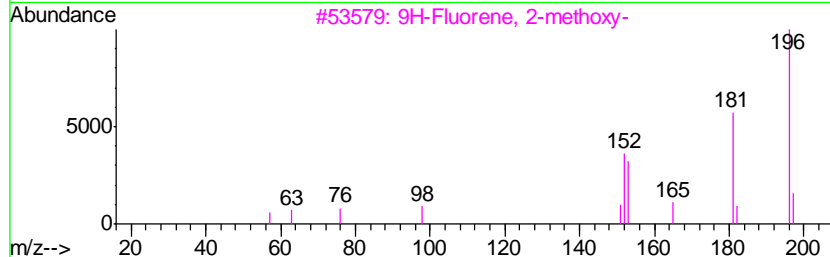
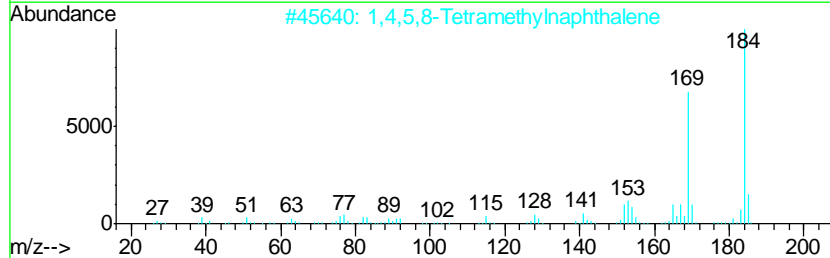
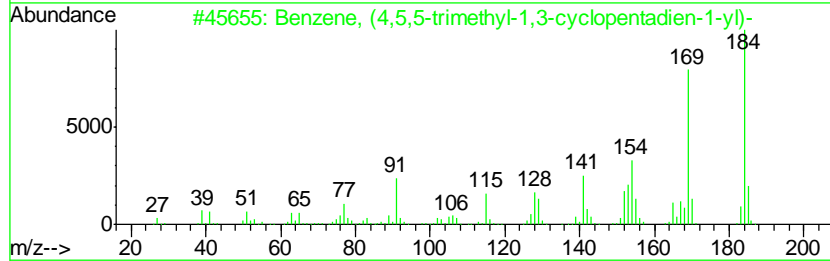
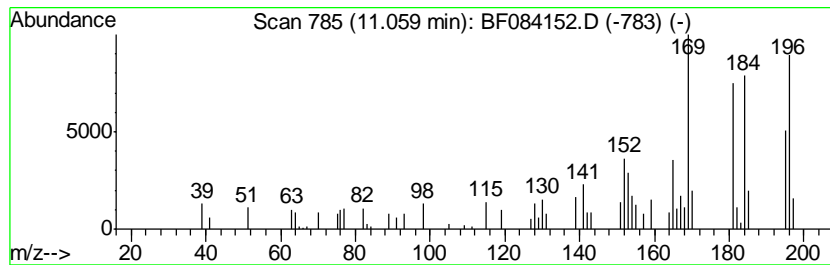
TIC Library : C:\DATABASE\NIST02.L  
 TIC Integration Parameters: LSCINT.P

\*\*\*\*\*  
 Peak Number 15 Benzene, (4,5,5-trimethyl-1... Concentration Rank 9

R.T.	EstConc	Area	Relative to ISTD	R.T.
11.06	3.88 ng	72913	Phenanthrene-d10	11.32

Hit#	of	Tentative ID	MW	MolForm	CAS#	Qual
1	5	Benzene, (4,5,5-trimethyl-1,3-cy...	184	C14H16	033930-85-7	70
2		1,4,5,8-Tetramethylnaphthalene	184	C14H16	002717-39-7	50
3		9H-Fluorene, 2-methoxy-	196	C14H12O	002523-46-8	46
4		1-Acenaphthylenol, 1,2-dihydro-1...	184	C13H12O	041002-74-8	46
5		Azulene, 7-ethyl-1,4-dimethyl-	184	C14H16	000529-05-5	43



Data Path : Z:\HPCHEM1\BNA F\DATA\BF122515\  
 Data File : BF084152.D  
 Acq On : 26 Dec 2015 2:21  
 Operator : UM/SJ  
 Sample : G4961-01  
 Misc :  
 ALS Vial : 69 Sample Multiplier: 1

Instrument :  
 BNA\_F  
 ClientSampleID :  
 PJ-SB-7(1.5-2.0)

Quant Method : Z:\HPCHEM1\BNA F\METHODS\8270-BF122415.M  
 Quant Title : ASP BNA STANDARDS FOR 5 POINT CALIBRATION

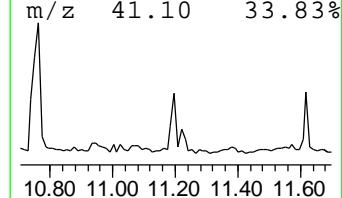
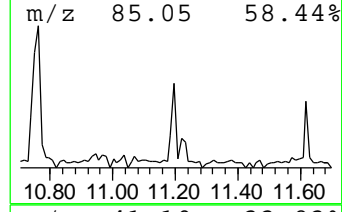
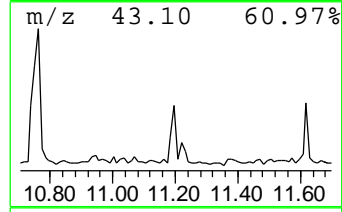
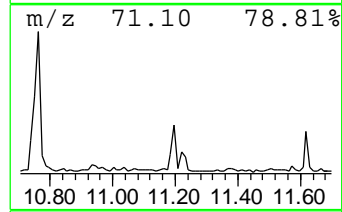
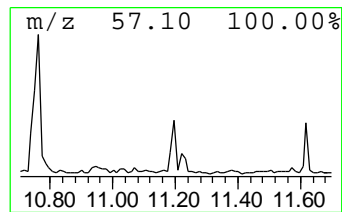
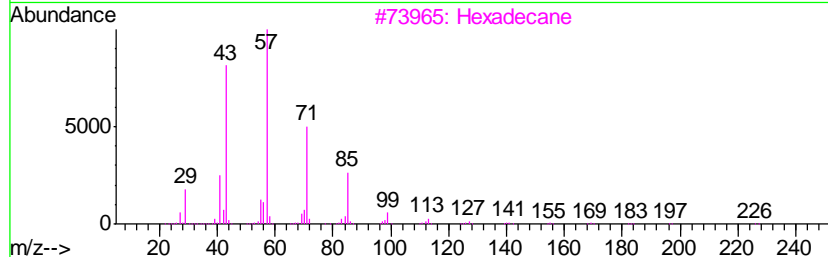
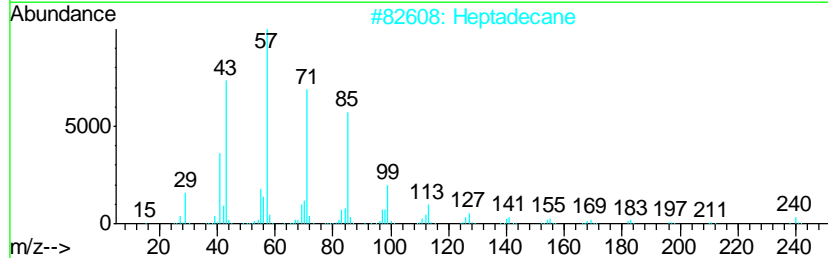
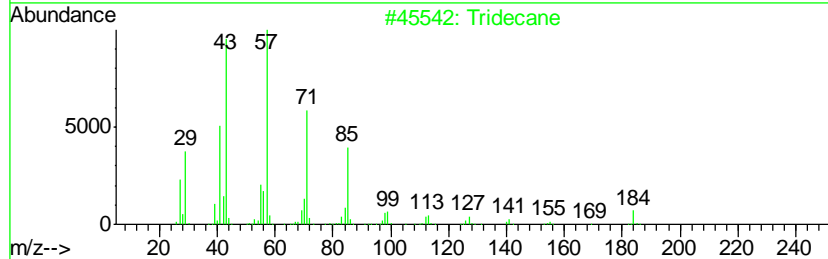
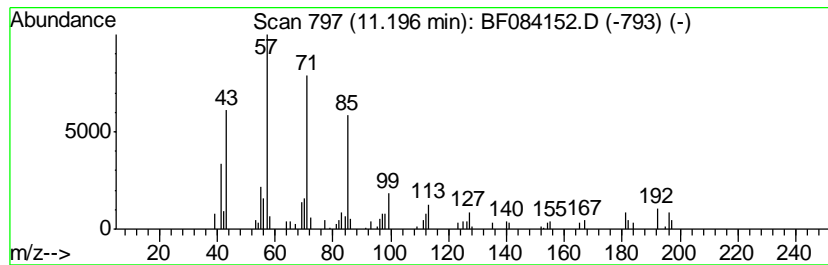
TIC Library : C:\DATABASE\NIST02.L  
 TIC Integration Parameters: LSCINT.P

\*\*\*\*\*  
 Peak Number 16 Tridecane Concentration Rank 6

R.T.	EstConc	Area	Relative to ISTD	R.T.
11.20	4.35 ng	81590	Phenanthrene-d10	11.32

Hit#	of	Tentative ID	MW	MolForm	CAS#	Qual
1	5	Tridecane	184	C13H28	000629-50-5	91
2		Heptadecane	240	C17H36	000629-78-7	83
3		Hexadecane	226	C16H34	000544-76-3	80
4		2-Bromo dodecane	248	C12H25Br	013187-99-0	80
5		Eicosane, 10-methyl-	296	C21H44	054833-23-7	80



Data Path : Z:\HPCHEM1\BNA F\DATA\BF122515\  
 Data File : BF084152.D  
 Acq On : 26 Dec 2015 2:21  
 Operator : UM/SJ  
 Sample : G4961-01  
 Misc :  
 ALS Vial : 69 Sample Multiplier: 1

Instrument :  
 BNA\_F  
 ClientSampleID :  
 PJ-SB-7(1.5-2.0)

Quant Method : Z:\HPCHEM1\BNA F\METHODS\8270-BF122415.M  
 Quant Title : ASP BNA STANDARDS FOR 5 POINT CALIBRATION

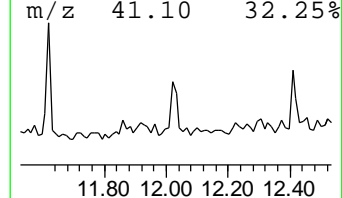
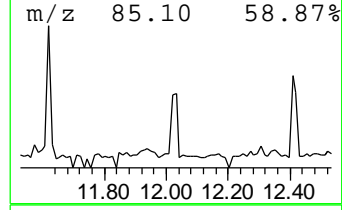
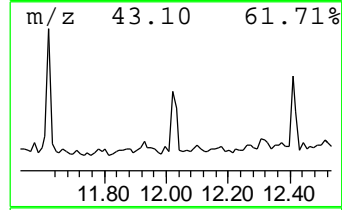
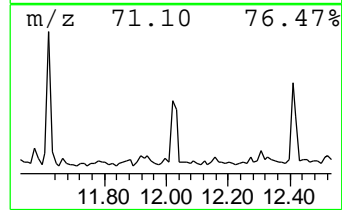
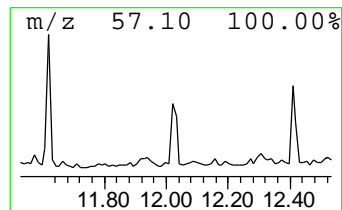
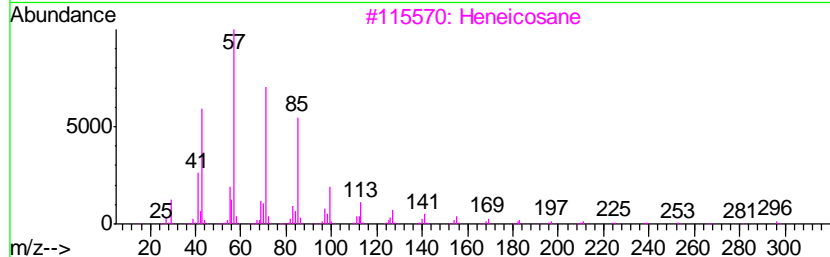
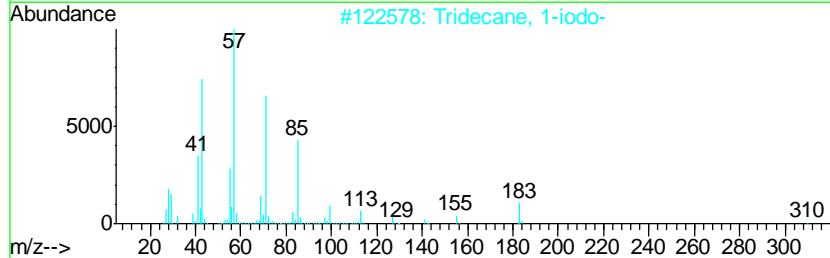
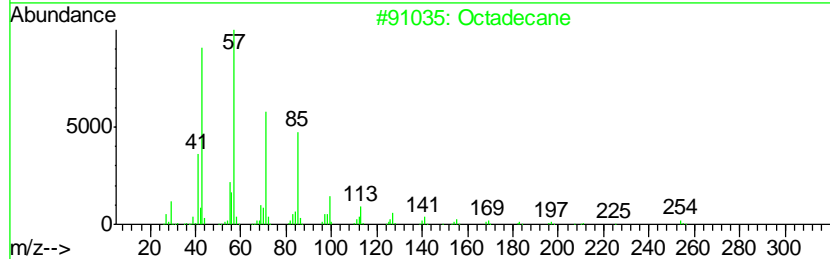
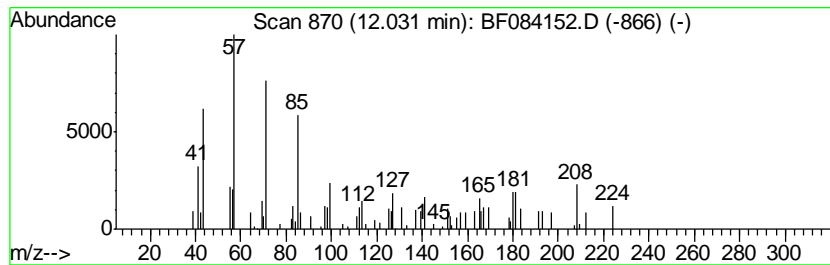
TIC Library : C:\DATABASE\NIST02.L  
 TIC Integration Parameters: LSCINT.P

\*\*\*\*\*  
 Peak Number 17 unknown12.03 Concentration Rank 19

R.T.	EstConc	Area	Relative to ISTD	R.T.
12.03	2.92 ng	54791	Phenanthrene-d10	11.32

Hit#	of	Tentative ID	MW	MolForm	CAS#	Qual
1	5	Octadecane	254	C18H38	000593-45-3	47
2		Tridecane, 1-iodo-	310	C13H27I	035599-77-0	47
3		Heneicosane	296	C21H44	000629-94-7	47
4		Tetrapentacontane, 1,54-dibromo-	915	C54H108Br2	1000156-09-4	47
5		Pentacosane	352	C25H52	000629-99-2	47



Data Path : Z:\HPCHEM1\BNA F\DATA\BF122515\  
 Data File : BF084152.D  
 Acq On : 26 Dec 2015 2:21  
 Operator : UM/SJ  
 Sample : G4961-01  
 Misc :  
 ALS Vial : 69 Sample Multiplier: 1

Instrument :  
 BNA\_F  
 ClientSampleID :  
 PJ-SB-7(1.5-2.0)

Quant Method : Z:\HPCHEM1\BNA F\METHODS\8270-BF122415.M  
 Quant Title : ASP BNA STANDARDS FOR 5 POINT CALIBRATION

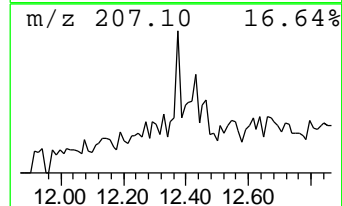
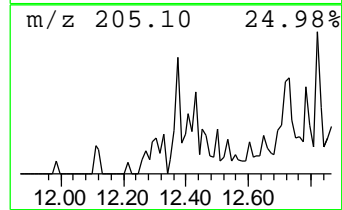
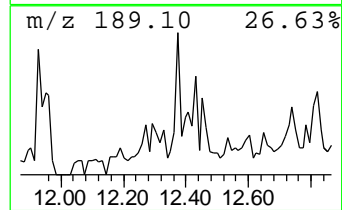
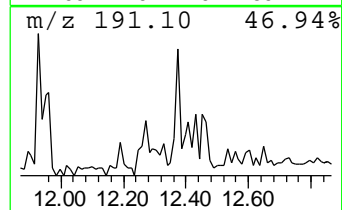
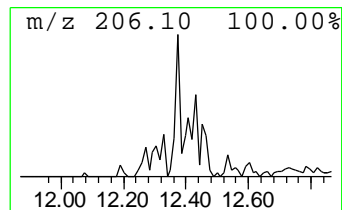
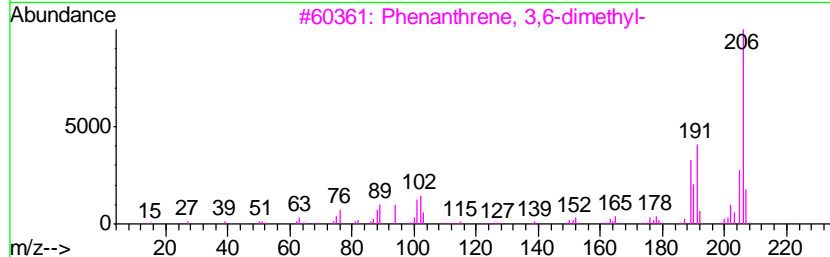
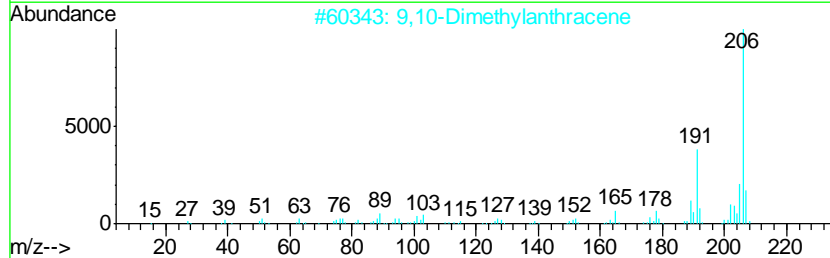
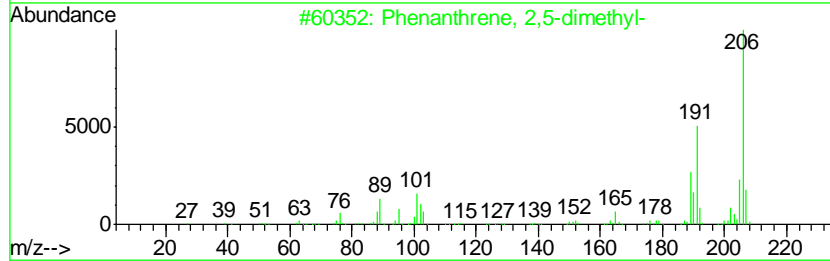
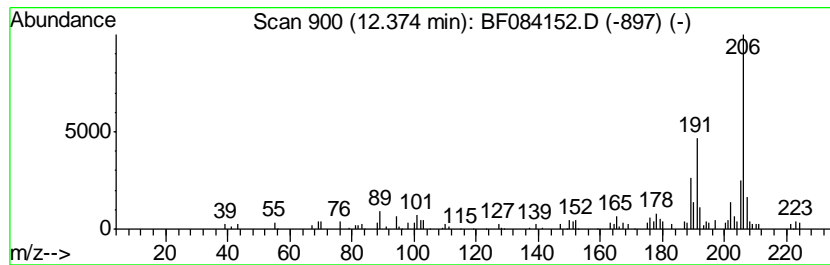
TIC Library : C:\DATABASE\NIST02.L  
 TIC Integration Parameters: LSCINT.P

\*\*\*\*\*  
 Peak Number 18 Phenanthrene, 2,5-dimethyl- Concentration Rank 13

R.T.	EstConc	Area	Relative to ISTD	R.T.
12.37	3.27 ng	61427	Phenanthrene-d10	11.32

Hit#	of	Tentative ID	MW	MolForm	CAS#	Qual
1	5	Phenanthrene, 2,5-dimethyl-	206	C16H14	003674-66-6	93
2		9,10-Dimethylanthracene	206	C16H14	000781-43-1	91
3		Phenanthrene, 3,6-dimethyl-	206	C16H14	001576-67-6	91
4		Phenanthrene, 1,7-dimethyl-	206	C16H14	000483-87-4	89
5		Phenanthrene, 2,3-dimethyl-	206	C16H14	003674-65-5	87





Data Path : Z:\HPCHEM1\BNA F\DATA\BF122515\  
 Data File : BF084152.D  
 Acq On : 26 Dec 2015 2:21  
 Operator : UM/SJ  
 Sample : G4961-01  
 Misc :  
 ALS Vial : 69 Sample Multiplier: 1

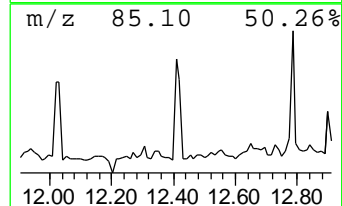
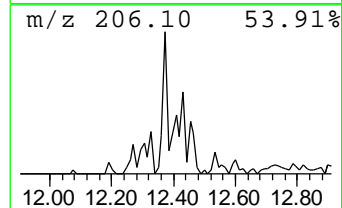
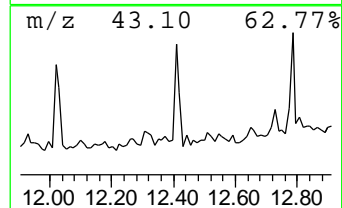
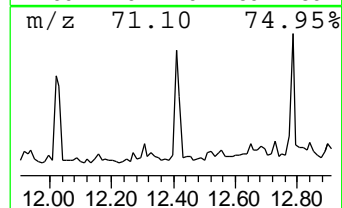
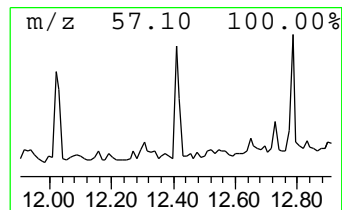
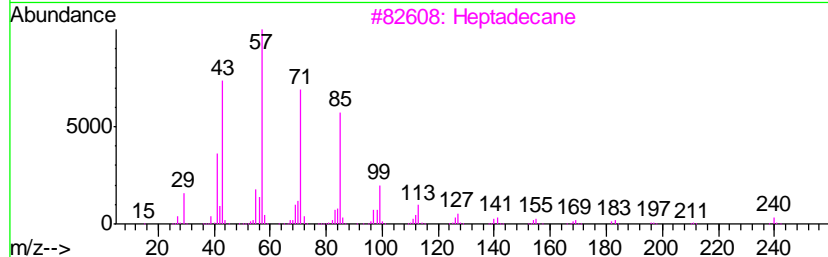
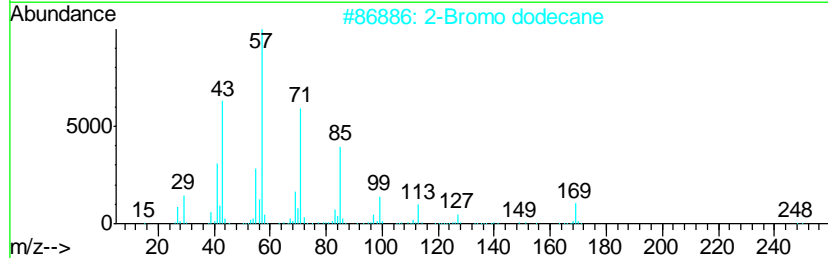
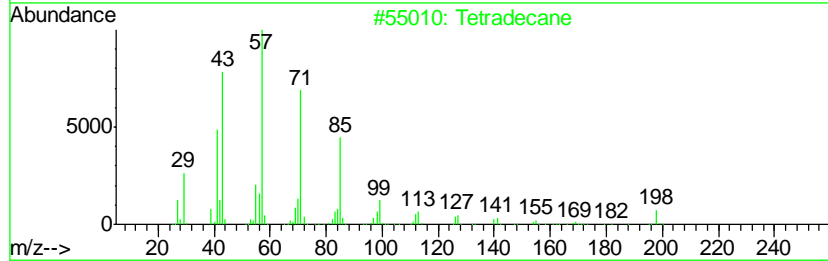
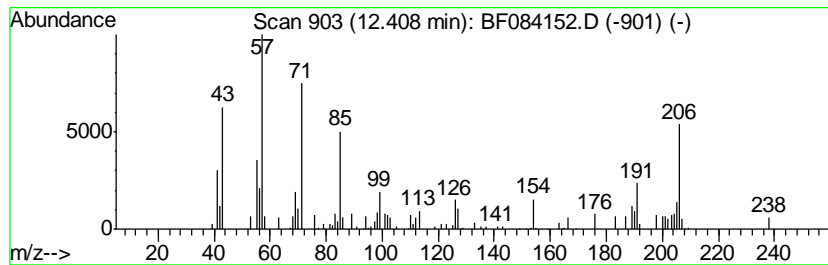
Instrument :  
 BNA\_F  
 ClientSampleID :  
 PJ-SB-7(1.5-2.0)

Quant Method : Z:\HPCHEM1\BNA F\METHODS\8270-BF122415.M  
 Quant Title : ASP BNA STANDARDS FOR 5 POINT CALIBRATION

TIC Library : C:\DATABASE\NIST02.L  
 TIC Integration Parameters: LSCINT.P

\*\*\*\*\*  
 Peak Number 19 Tetradecane Concentration Rank 11

R.T.	EstConc	Area	Relative to ISTD	R.T.
12.41	3.59 ng	67339	Phenanthrene-d10	11.32
Hit# of	5	Tentative ID	MW MolForm	CAS# Qual
1		Tetradecane	198 C14H30	000629-59-4 55
2		2-Bromo dodecane	248 C12H25Br	013187-99-0 43
3		Heptadecane	240 C17H36	000629-78-7 43
4		Octadecane, 1-iodo-	380 C18H37I	000629-93-6 43
5		1-Iodo-2-methylnonane	268 C10H21I	1000101-47-9 38



Data Path : Z:\HPCHEM1\BNA\_F\DATA\BF122515\  
 Data File : BF084152.D  
 Acq On : 26 Dec 2015 2:21  
 Operator : UM/SJ  
 Sample : G4961-01  
 Misc :  
 ALS Vial : 69 Sample Multiplier: 1

Instrument :  
 BNA\_F  
 ClientSampleId :  
 PJ-SB-7(1.5-2.0)

Quant Method : Z:\HPCHEM1\BNA\_F\METHODS\8270-BF122415.M  
 Quant Title : ASP BNA STANDARDS FOR 5 POINT CALIBRATION

TIC Library : C:\DATABASE\NIST02.L  
 TIC Integration Parameters: LSCINT.P

TIC Top Hit name	RT	EstConc	Units	Response	--Internal Standard--			
					#	RT	Resp	Conc
2-Pentanone, 4-hy...	4.98	17.6	ng	305620	1	6.80	346281	20.0
unknown6.58	6.58	99.5	ng	1722410	1	6.80	346281	20.0
Naphthalene, 2,3-...	9.49	4.6	ng	97076	3	9.84	423931	20.0
Naphthalene, 2,3,...	10.04	3.1	ng	65246	3	9.84	423931	20.0
Naphthalene, 1,6,...	10.25	3.2	ng	67209	3	9.84	423931	20.0
Eicosane	10.27	3.0	ng	64333	3	9.84	423931	20.0
Naphthalene, 1,4,...	10.37	3.1	ng	65864	3	9.84	423931	20.0
Hexadecane, 2,6,1...	10.76	11.1	ng	207645	4	11.32	375380	20.0
Benzene, (4,5,5-t...	11.06	3.9	ng	72913	4	11.32	375380	20.0
Tridecane	11.20	4.3	ng	81590	4	11.32	375380	20.0
unknown12.03	12.03	2.9	ng	54791	4	11.32	375380	20.0
Phenanthrene, 2,5...	12.37	3.3	ng	61427	4	11.32	375380	20.0
Tetradecane	12.41	3.6	ng	67339	4	11.32	375380	20.0