

Data Path : Z:\svoasrv\HPCHEM1\BNA_F\Data\BF122724\
 Data File : BF140983.D
 Acq On : 27 Dec 2024 09:11
 Operator : RC/JU
 Sample : PB165785BS
 Misc :
 ALS Vial : 4 Sample Multiplier: 1

Instrument :
 BNA_F
 ClientSampleId :
 PB165785BS

Quant Time: Dec 27 10:37:40 2024
 Quant Method : Z:\svoasrv\HPCHEM1\BNA_F\Methods\8270-BF122624.M
 Quant Title : ASP BNA STANDARDS FOR 5 POINT CALIBRATION
 QLast Update : Fri Dec 27 00:31:16 2024
 Response via : Initial Calibration

Compound	R.T.	QIon	Response	Conc	Units	Dev(Min)
Internal Standards						
1) 1,4-Dichlorobenzene-d4	6.828	152	274747	20.000	ng	0.00
21) Naphthalene-d8	8.110	136	1108868	20.000	ng	0.00
39) Acenaphthene-d10	9.863	164	597046	20.000	ng	0.00
64) Phenanthrene-d10	11.345	188	1008689	20.000	ng	0.00
76) Chrysene-d12	13.986	240	702609	20.000	ng	0.00
86) Perylene-d12	15.439	264	567599	20.000	ng	0.00
System Monitoring Compounds						
5) 2-Fluorophenol	5.446	112	2331277	127.904	ng	0.01
7) Phenol-d6	6.451	99	2989885	127.337	ng	0.00
23) Nitrobenzene-d5	7.393	82	1804830	104.133	ng	0.00
42) 2,4,6-Tribromophenol	10.651	330	861659	148.523	ng	0.00
45) 2-Fluorobiphenyl	9.187	172	3274669	87.386	ng	0.00
79) Terphenyl-d14	12.939	244	3778801	89.332	ng	0.00
Target Compounds						
2) 1,4-Dioxane	2.669	88	337111	40.853	ng	99
3) Pyridine	3.405	79	884364	43.854	ng	100
4) n-Nitrosodimethylamine	3.352	42	472913	46.283	ng	99
6) Aniline	6.493	93	928861	44.356	ng	99
8) 2-Chlorophenol	6.610	128	925347	48.153	ng	98
9) Benzaldehyde	6.375	77	202390	11.797	ng	99
10) Phenol	6.469	94	1170427	48.208	ng	97
11) bis(2-Chloroethyl)ether	6.563	93	882289	45.006	ng	100
12) 1,3-Dichlorobenzene	6.769	146	933742	44.028	ng	100
13) 1,4-Dichlorobenzene	6.845	146	946529	44.273	ng	100
14) 1,2-Dichlorobenzene	6.998	146	913260	45.816	ng	99
15) Benzyl Alcohol	6.969	79	819344	48.560	ng	100
16) 2,2'-oxybis(1-Chloropr...	7.104	45	1421505	47.948	ng	100
17) 2-Methylphenol	7.075	107	762845	47.783	ng	99
18) Hexachloroethane	7.340	117	349442	46.012	ng	96
19) n-Nitroso-di-n-propyla...	7.245	70	668406	46.467	ng	99
20) 3+4-Methylphenols	7.228	107	935952	46.327	ng	92
22) Acetophenone	7.240	105	1229730	45.207	ng	99
24) Nitrobenzene	7.410	77	950229	49.065	ng	98
25) Isophorone	7.651	82	1787139	47.385	ng	99
26) 2-Nitrophenol	7.728	139	394188	49.482	ng	99
27) 2,4-Dimethylphenol	7.757	122	766947	55.641	ng	100
28) bis(2-Chloroethoxy)met...	7.863	93	1089173	45.580	ng	99
29) 2,4-Dichlorophenol	7.963	162	744817	47.644	ng	99
30) 1,2,4-Trichlorobenzene	8.051	180	773334	43.706	ng	100
31) Naphthalene	8.134	128	2612061	44.704	ng	100
32) Benzoic acid	7.875	122	506392	45.180	ng	97
33) 4-Chloroaniline	8.175	127	428402	20.267	ng	99
34) Hexachlorobutadiene	8.251	225	452413	43.371	ng	99
35) Caprolactam	8.539	113	126970	23.891	ng	99
36) 4-Chloro-3-methylphenol	8.651	107	810772	46.700	ng	99
37) 2-Methylnaphthalene	8.822	142	1722840	46.090	ng	99
38) 1-Methylnaphthalene	8.922	142	1598257	43.506	ng	100
40) 1,2,4,5-Tetrachloroben...	8.987	216	729914	44.438	ng	98
41) Hexachlorocyclopentadiene	8.975	237	902266	165.760	ng	100
43) 2,4,6-Trichlorophenol	9.092	196	550450	50.352	ng	100

Data Path : Z:\svoasrv\HPCHEM1\BNA_F\Data\BF122724\
 Data File : BF140983.D
 Acq On : 27 Dec 2024 09:11
 Operator : RC/JU
 Sample : PB165785BS
 Misc :
 ALS Vial : 4 Sample Multiplier: 1

Instrument :
 BNA_F
ClientSampleId :
 PB165785BS

Quant Time: Dec 27 10:37:40 2024
 Quant Method : Z:\svoasrv\HPCHEM1\BNA_F\Methods\8270-BF122624.M
 Quant Title : ASP BNA STANDARDS FOR 5 POINT CALIBRATION
 QLast Update : Fri Dec 27 00:31:16 2024
 Response via : Initial Calibration

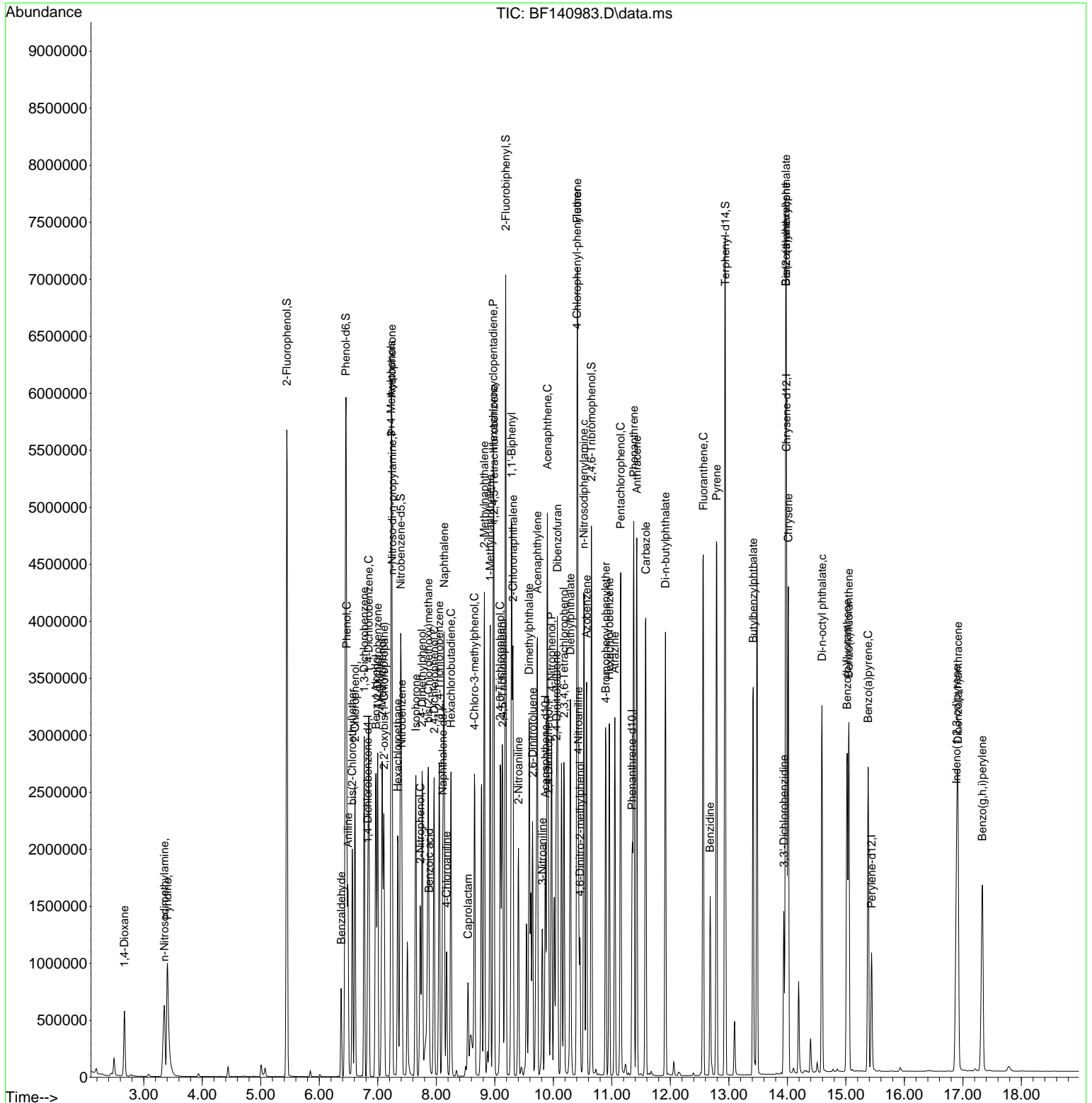
Compound	R.T.	QIon	Response	Conc	Units	Dev(Min)
44) 2,4,5-Trichlorophenol	9.134	196	508518	45.462	ng	99
46) 1,1'-Biphenyl	9.287	154	2065336	45.178	ng	99
47) 2-Chloronaphthalene	9.310	162	1556159	43.890	ng	99
48) 2-Nitroaniline	9.404	65	467505	50.170	ng	95
49) Acenaphthylene	9.728	152	2444717	47.898	ng	99
50) Dimethylphthalate	9.586	163	1838728	46.821	ng	100
51) 2,6-Dinitrotoluene	9.645	165	386549	48.245	ng	99
52) Acenaphthene	9.898	154	1703583	49.371	ng	100
53) 3-Nitroaniline	9.810	138	265656	31.691	ng #	97
54) 2,4-Dinitrophenol	9.916	184	304969	90.306	ng #	1
55) Dibenzofuran	10.069	168	2215928	45.697	ng	100
56) 4-Nitrophenol	9.969	139	725953	108.065	ng	99
57) 2,4-Dinitrotoluene	10.051	165	506429	51.330	ng	99
58) Fluorene	10.410	166	1678446	44.636	ng	99
59) 2,3,4,6-Tetrachlorophenol	10.181	232	465904	50.293	ng	98
60) Diethylphthalate	10.292	149	1778699	45.878	ng	99
61) 4-Chlorophenyl-phenyle...	10.404	204	801949	44.322	ng	99
62) 4-Nitroaniline	10.428	138	415348	47.753	ng	98
63) Azobenzene	10.569	77	1882254	46.254	ng	99
65) 4,6-Dinitro-2-methylph...	10.457	198	214224	52.241	ng	97
66) n-Nitrosodiphenylamine	10.522	169	1538861	48.448	ng	100
67) 4-Bromophenyl-phenylether	10.898	248	523358	47.996	ng	97
68) Hexachlorobenzene	10.957	284	574649	47.794	ng	98
69) Atrazine	11.051	200	528271	59.532	ng	99
70) Pentachlorophenol	11.151	266	711356	95.026	ng	99
71) Phenanthrene	11.375	178	2570987	48.429	ng	100
72) Anthracene	11.428	178	2574703	49.495	ng	100
73) Carbazole	11.580	167	2320550	46.404	ng	100
74) Di-n-butylphthalate	11.916	149	2695936	47.398	ng	100
75) Fluoranthene	12.563	202	2641352	45.875	ng	99
77) Benzidine	12.680	184	799588	53.848	ng	99
78) Pyrene	12.792	202	2743608	44.649	ng	100
80) Butylbenzylphthalate	13.416	149	1083298	48.279	ng	99
81) Benzo(a)anthracene	13.974	228	2212692	45.187	ng	100
82) 3,3'-Dichlorobenzidine	13.939	252	405461	27.560	ng	99
83) Chrysene	14.016	228	1950985	44.197	ng	100
84) Bis(2-ethylhexyl)phtha...	13.974	149	1364261	46.873	ng	100
85) Di-n-octyl phthalate	14.592	149	2068227	49.097	ng	99
87) Indeno(1,2,3-cd)pyrene	16.892	276	1908430	53.368	ng	99
88) Benzo(b)fluoranthene	15.021	252	1741466	43.991	ng	99
89) Benzo(k)fluoranthene	15.051	252	1629204	52.510	ng	99
90) Benzo(a)pyrene	15.380	252	1540646	50.141	ng	99
91) Dibenzo(a,h)anthracene	16.915	278	1530271	52.791	ng	100
92) Benzo(g,h,i)perylene	17.333	276	1454174	48.367	ng	100

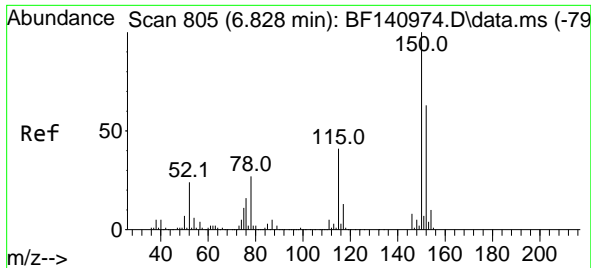
(#) = qualifier out of range (m) = manual integration (+) = signals summed

Data Path : Z:\svoasrv\HPCHEM1\BNA_F\Data\BF122724\
 Data File : BF140983.D
 Acq On : 27 Dec 2024 09:11
 Operator : RC/JU
 Sample : PB165785BS
 Misc :
 ALS Vial : 4 Sample Multiplier: 1

Instrument :
 BNA_F
 ClientSampleId :
 PB165785BS

Quant Time: Dec 27 10:37:40 2024
 Quant Method : Z:\svoasrv\HPCHEM1\BNA_F\Methods\8270-BF122624.M
 Quant Title : ASP BNA STANDARDS FOR 5 POINT CALIBRATION
 QLast Update : Fri Dec 27 00:31:16 2024
 Response via : Initial Calibration

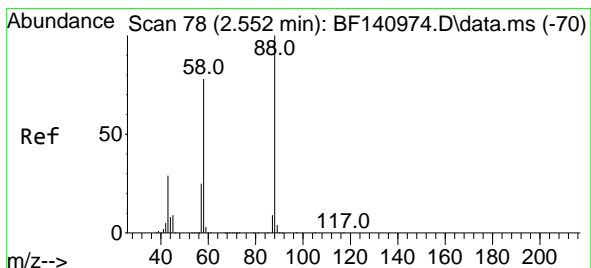
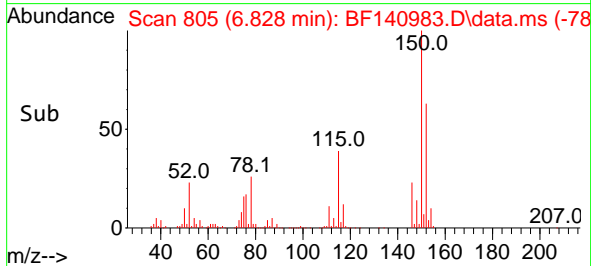
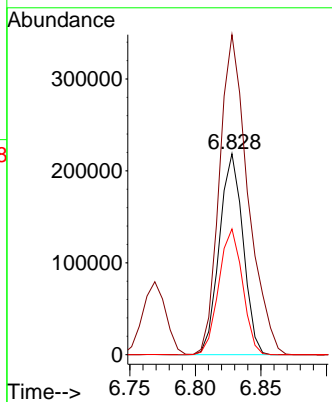
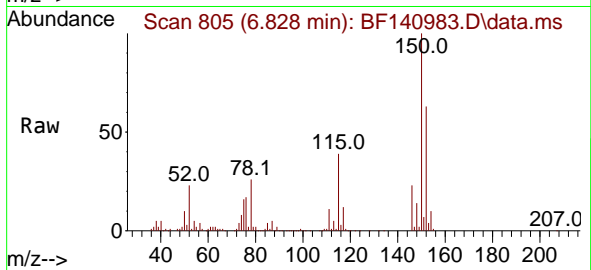




#1
 1,4-Dichlorobenzene-d4
 Concen: 20.000 ng
 RT: 6.828 min Scan# 80
 Delta R.T. -0.000 min
 Lab File: BF140983.D
 Acq: 27 Dec 2024 09:11

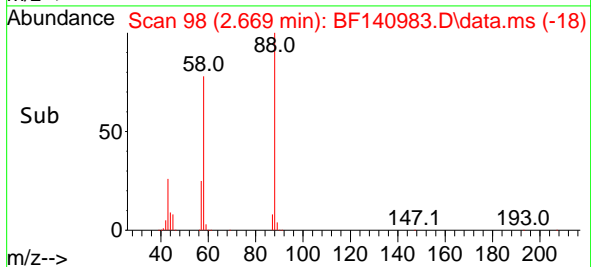
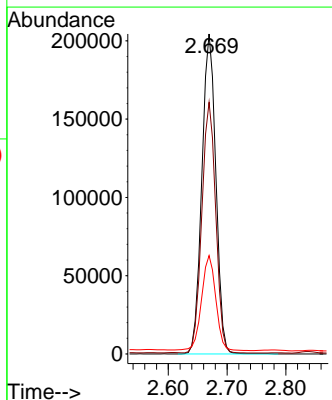
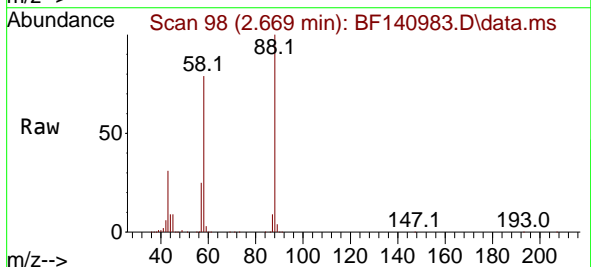
Instrument :
 BNA_F
 ClientSampleId :
 PB165785BS

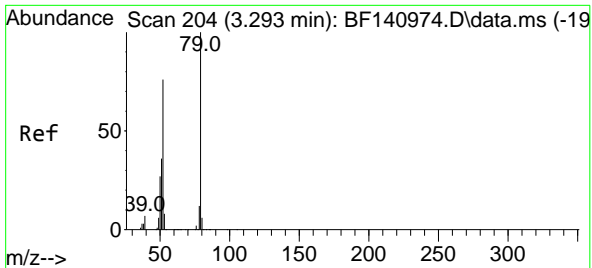
Tgt Ion:152 Resp: 274747
 Ion Ratio Lower Upper
 152 100
 150 159.2 127.0 190.6
 115 62.5 51.7 77.5



#2
 1,4-Dioxane
 Concen: 40.853 ng
 RT: 2.669 min Scan# 98
 Delta R.T. 0.118 min
 Lab File: BF140983.D
 Acq: 27 Dec 2024 09:11

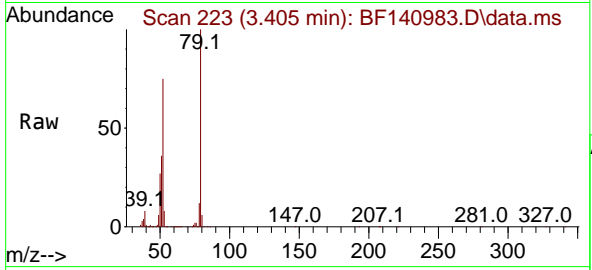
Tgt Ion: 88 Resp: 337111
 Ion Ratio Lower Upper
 88 100
 58 78.1 63.0 94.4
 43 30.2 23.4 35.2





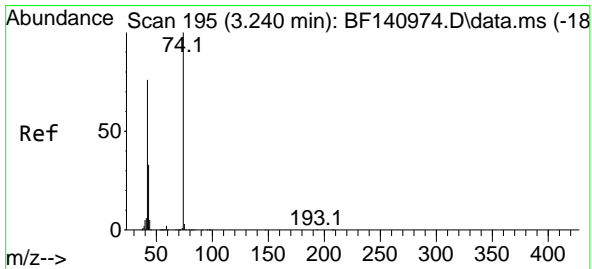
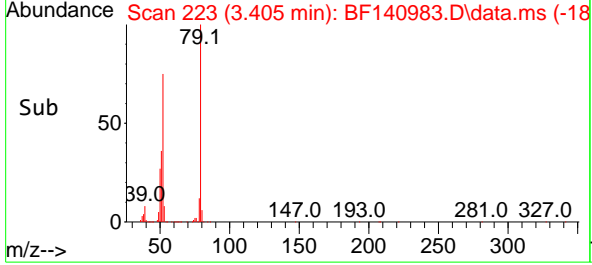
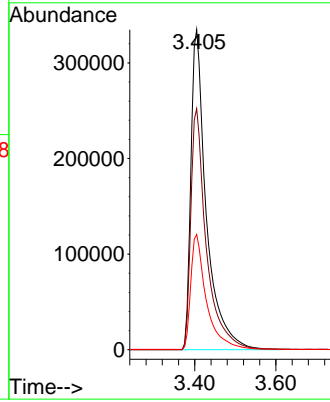
#3
 Pyridine
 Concen: 43.854 ng
 RT: 3.405 min Scan# 214
 Delta R.T. 0.112 min
 Lab File: BF140983.D
 Acq: 27 Dec 2024 09:11

Instrument :
 BNA_F
 ClientSampleId :
 PB165785BS



Tgt Ion: 79 Resp: 884364

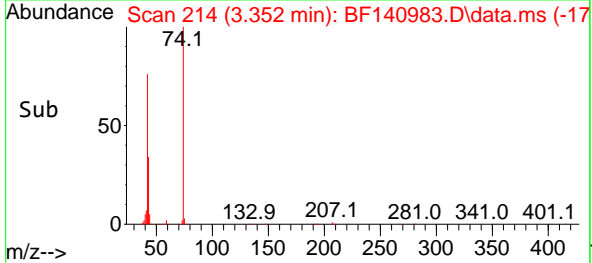
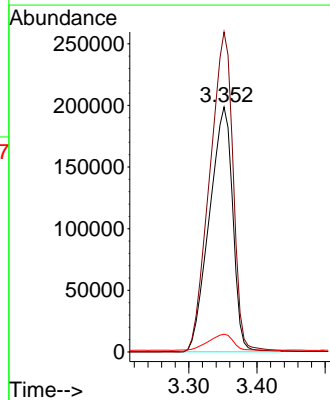
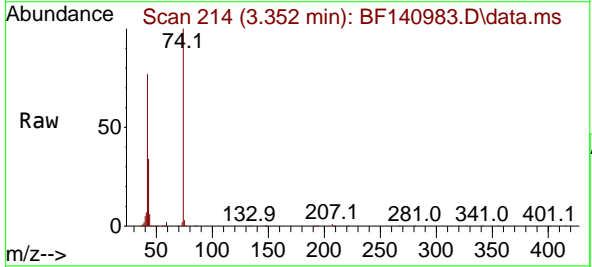
Ion	Ratio	Lower	Upper
79	100		
52	75.3	60.4	90.6
51	36.0	28.8	43.2

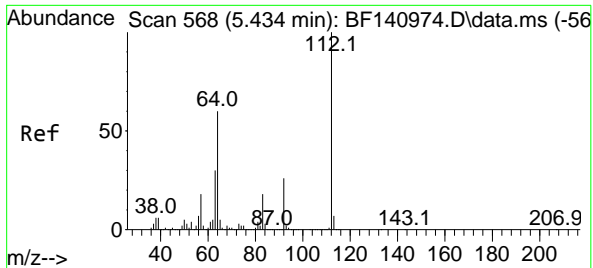


#4
 n-Nitrosodimethylamine
 Concen: 46.283 ng
 RT: 3.352 min Scan# 214
 Delta R.T. 0.112 min
 Lab File: BF140983.D
 Acq: 27 Dec 2024 09:11

Tgt Ion: 42 Resp: 472913

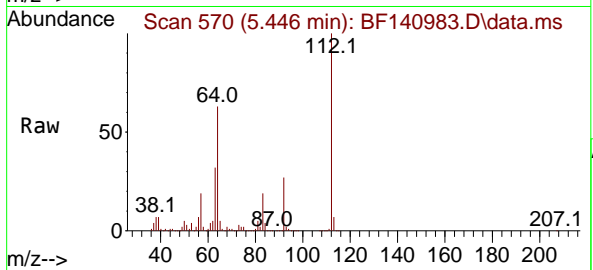
Ion	Ratio	Lower	Upper
42	100		
74	130.6	105.8	158.6
44	7.2	6.6	10.0



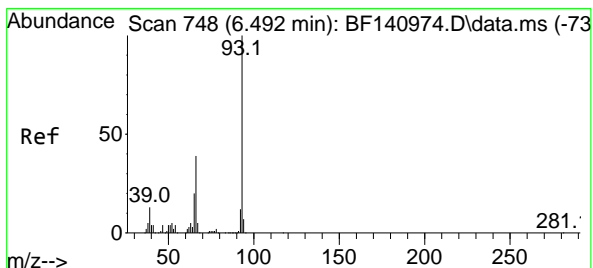
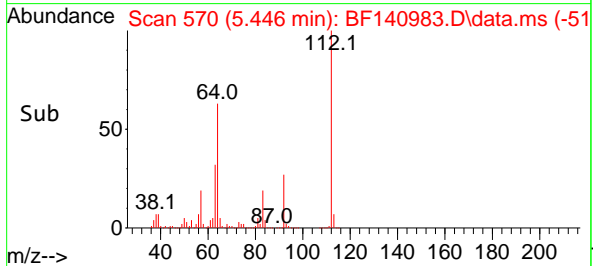
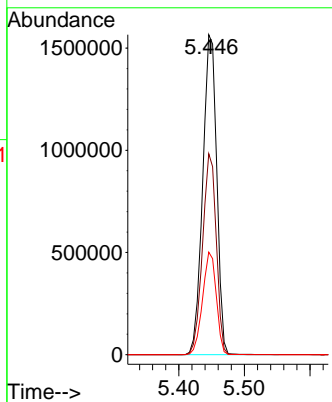


#5
 2-Fluorophenol
 Concen: 127.904 ng
 RT: 5.446 min Scan# 51
 Delta R.T. 0.012 min
 Lab File: BF140983.D
 Acq: 27 Dec 2024 09:11

Instrument :
 BNA_F
 ClientSampleId :
 PB165785BS

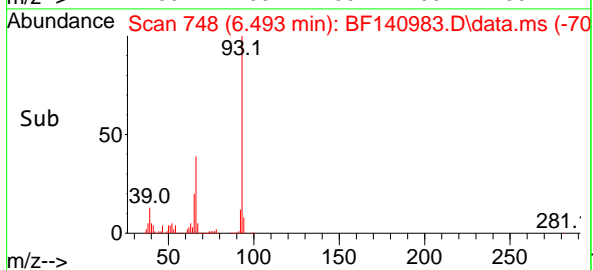
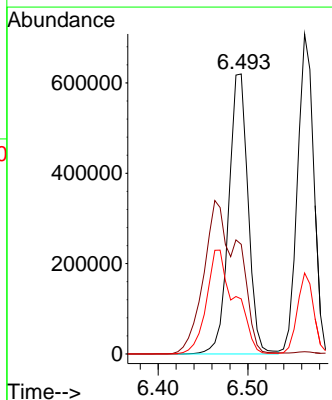
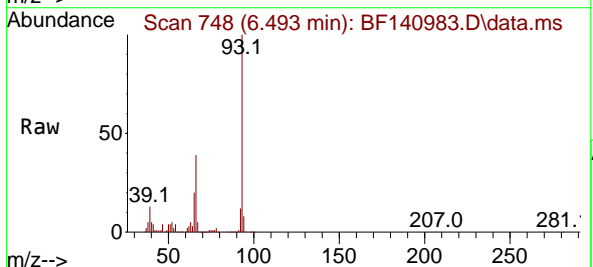


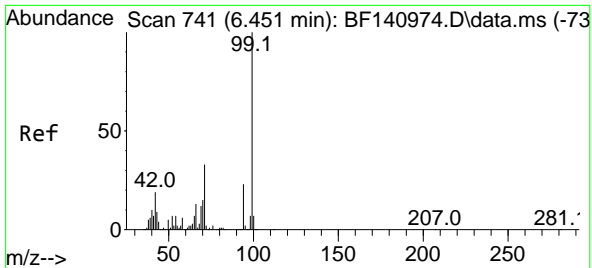
Tgt Ion: 112 Resp: 2331277
 Ion Ratio Lower Upper
 112 100
 64 62.8 47.7 71.5
 63 32.1 24.2 36.2



#6
 Aniline
 Concen: 44.356 ng
 RT: 6.493 min Scan# 748
 Delta R.T. -0.018 min
 Lab File: BF140983.D
 Acq: 27 Dec 2024 09:11

Tgt Ion: 93 Resp: 928861
 Ion Ratio Lower Upper
 93 100
 66 39.2 31.8 47.8
 65 19.7 15.4 23.0



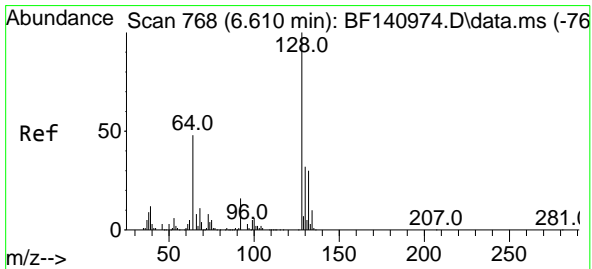
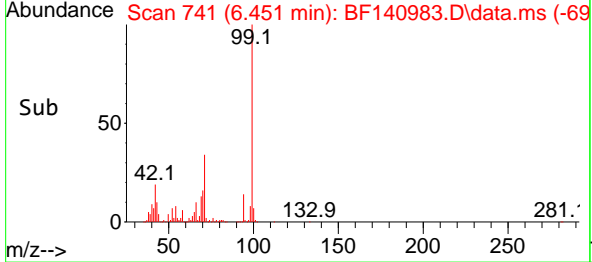
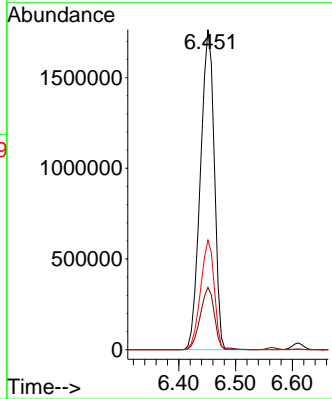
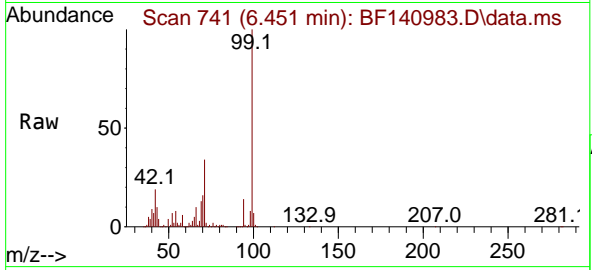


#7
 Phenol-d6
 Concen: 127.337 ng
 RT: 6.451 min Scan# 741
 Delta R.T. 0.000 min
 Lab File: BF140983.D
 Acq: 27 Dec 2024 09:11

Instrument : BNA_F
 ClientSampleId : PB165785BS

Tgt Ion: 99 Resp: 2989885

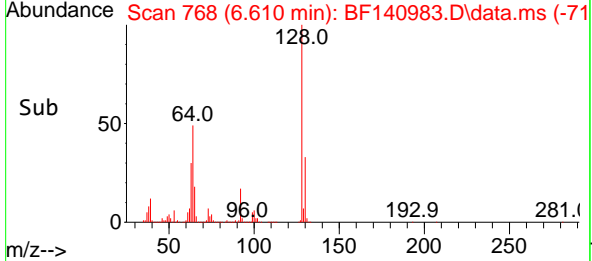
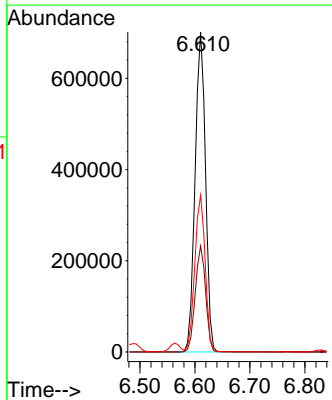
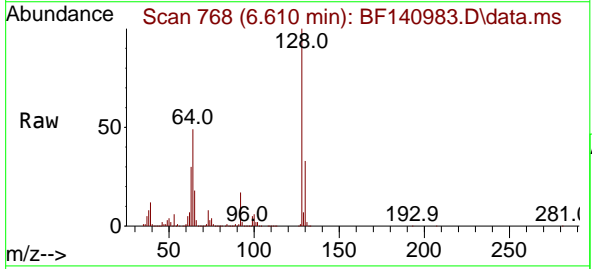
Ion	Ratio	Lower	Upper
99	100		
42	19.5	15.0	22.4
71	34.2	26.2	39.2

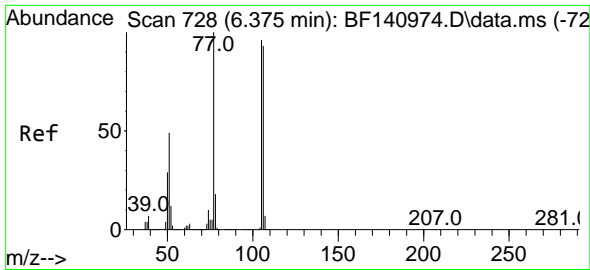


#8
 2-Chlorophenol
 Concen: 48.153 ng
 RT: 6.610 min Scan# 768
 Delta R.T. 0.000 min
 Lab File: BF140983.D
 Acq: 27 Dec 2024 09:11

Tgt Ion: 128 Resp: 925347

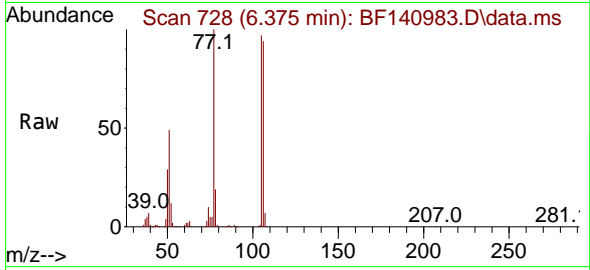
Ion	Ratio	Lower	Upper
128	100		
130	33.1	12.2	52.2
64	49.0	30.3	70.3



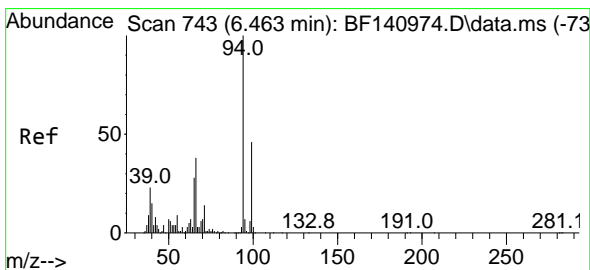
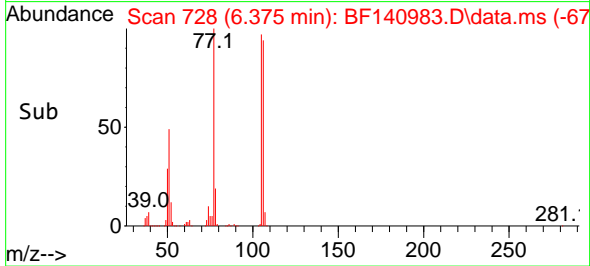
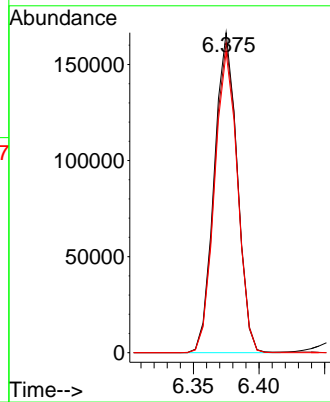


#9
 Benzaldehyde
 Concen: 11.797 ng
 RT: 6.375 min Scan# 71
 Delta R.T. -0.000 min
 Lab File: BF140983.D
 Acq: 27 Dec 2024 09:11

Instrument :
 BNA_F
 ClientSampleId :
 PB165785BS

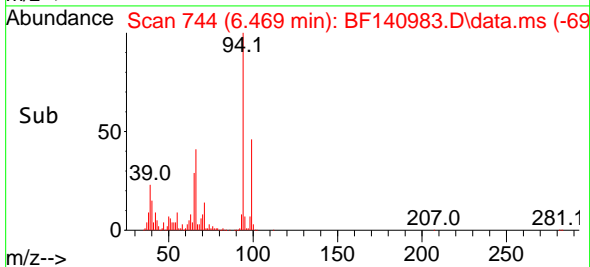
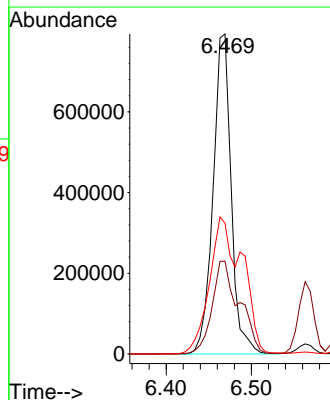
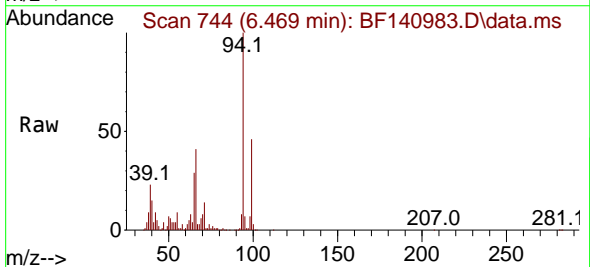


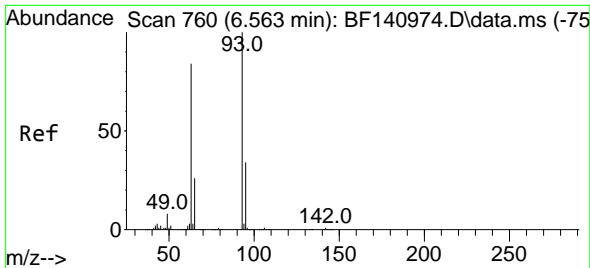
Tgt Ion: 77 Resp: 202390
 Ion Ratio Lower Upper
 77 100
 105 96.9 76.2 116.2
 106 93.9 73.4 113.4



#10
 Phenol
 Concen: 48.208 ng
 RT: 6.469 min Scan# 744
 Delta R.T. 0.006 min
 Lab File: BF140983.D
 Acq: 27 Dec 2024 09:11

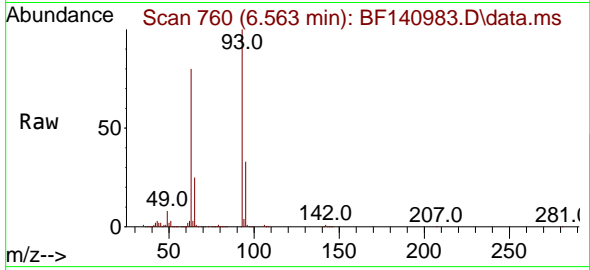
Tgt Ion: 94 Resp: 1170427
 Ion Ratio Lower Upper
 94 100
 65 29.0 8.1 48.1
 66 40.8 18.7 58.7



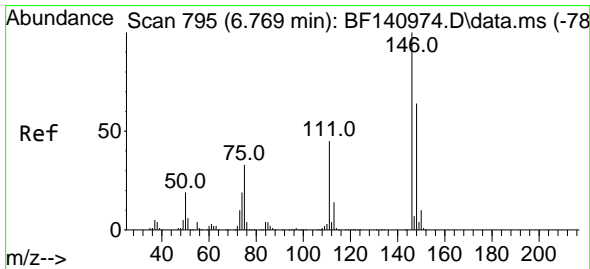
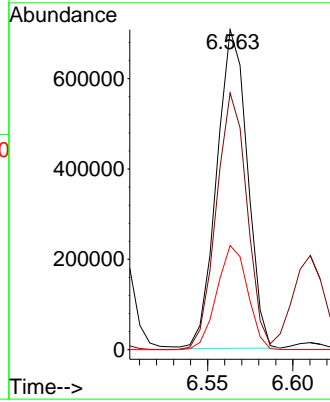
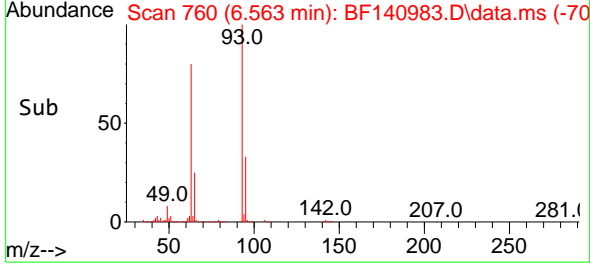


#11
 bis(2-Chloroethyl)ether
 Concen: 45.006 ng
 RT: 6.563 min Scan# 760
 Delta R.T. 0.000 min
 Lab File: BF140983.D
 Acq: 27 Dec 2024 09:11

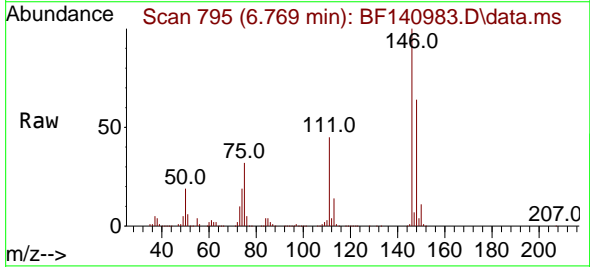
Instrument : BNA_F
 ClientSampleId : PB165785BS



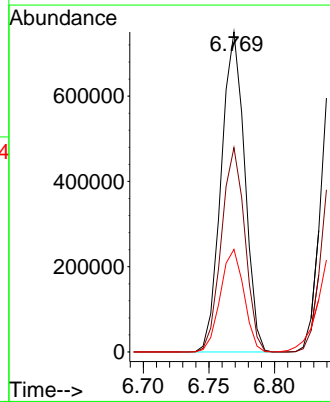
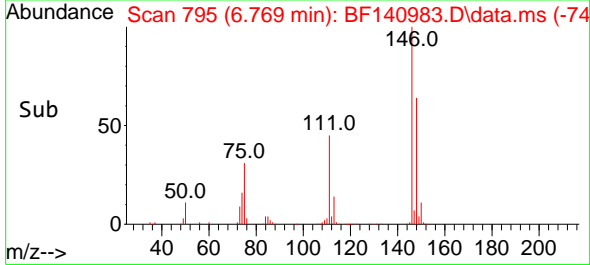
Tgt Ion: 93 Resp: 882289
 Ion Ratio Lower Upper
 93 100
 63 80.2 60.3 100.3
 95 32.6 12.2 52.2

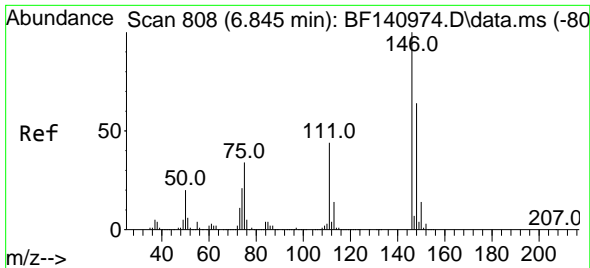


#12
 1,3-Dichlorobenzene
 Concen: 44.028 ng
 RT: 6.769 min Scan# 795
 Delta R.T. 0.000 min
 Lab File: BF140983.D
 Acq: 27 Dec 2024 09:11



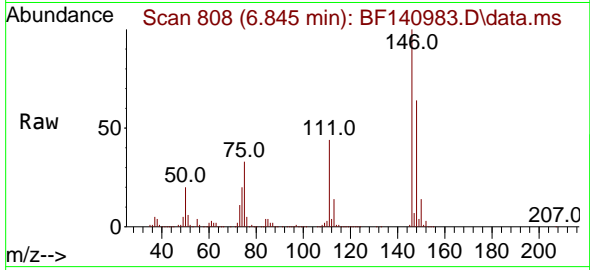
Tgt Ion:146 Resp: 933742
 Ion Ratio Lower Upper
 146 100
 148 63.9 51.0 76.4
 75 32.0 26.1 39.1



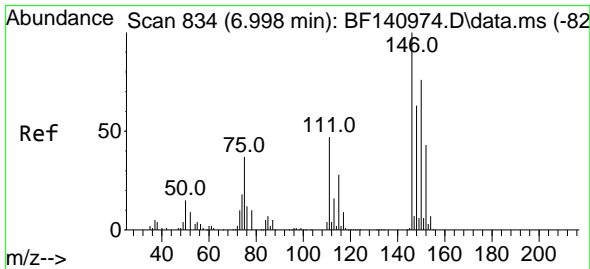
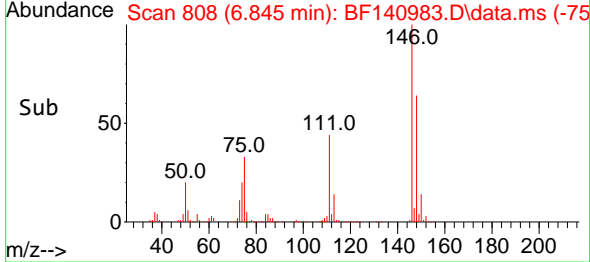
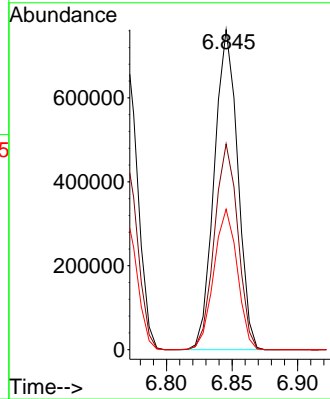


#13
 1,4-Dichlorobenzene
 Concen: 44.273 ng
 RT: 6.845 min Scan# 808
 Delta R.T. 0.000 min
 Lab File: BF140983.D
 Acq: 27 Dec 2024 09:11

Instrument :
 BNA_F
 ClientSampleId :
 PB165785BS

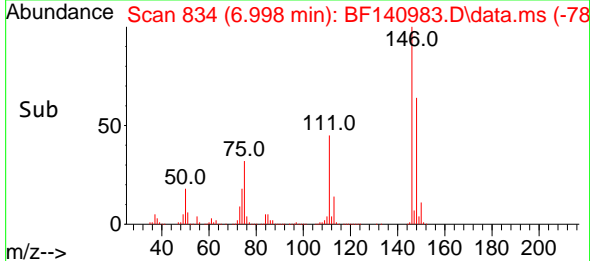
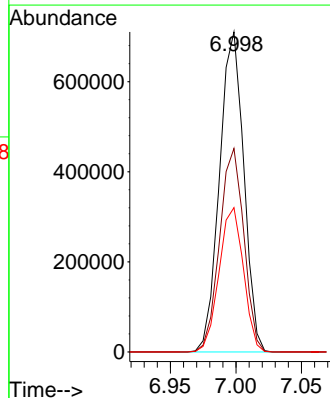
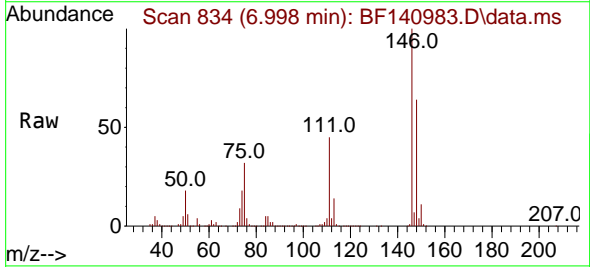


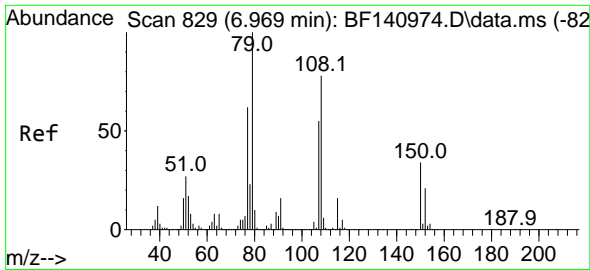
Tgt Ion:146 Resp: 946529
 Ion Ratio Lower Upper
 146 100
 148 64.3 51.3 76.9
 111 43.9 35.3 52.9



#14
 1,2-Dichlorobenzene
 Concen: 45.816 ng
 RT: 6.998 min Scan# 834
 Delta R.T. 0.000 min
 Lab File: BF140983.D
 Acq: 27 Dec 2024 09:11

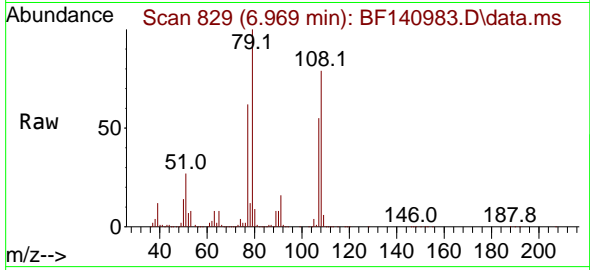
Tgt Ion:146 Resp: 913260
 Ion Ratio Lower Upper
 146 100
 148 63.6 50.6 76.0
 111 45.1 37.3 55.9



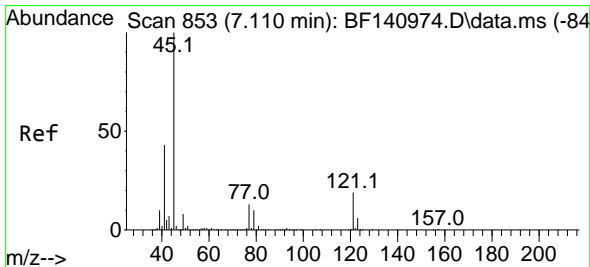
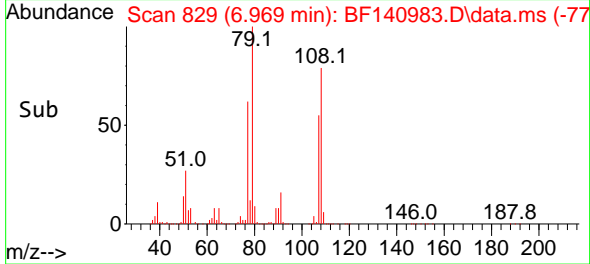
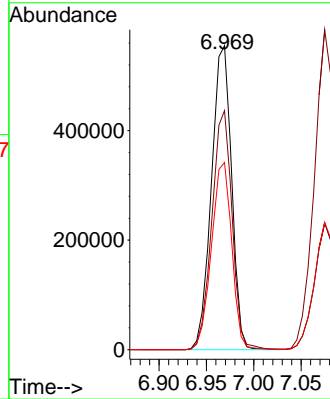


#15
 Benzyl Alcohol
 Concen: 48.560 ng
 RT: 6.969 min Scan# 81
 Delta R.T. 0.000 min
 Lab File: BF140983.D
 Acq: 27 Dec 2024 09:11

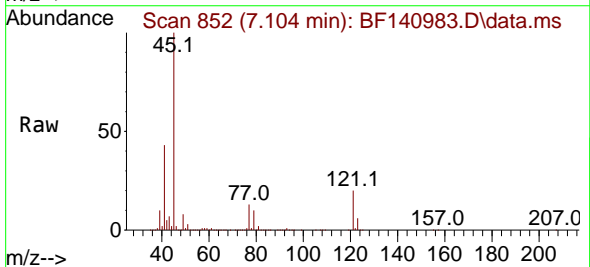
Instrument :
 BNA_F
 ClientSampleId :
 PB165785BS



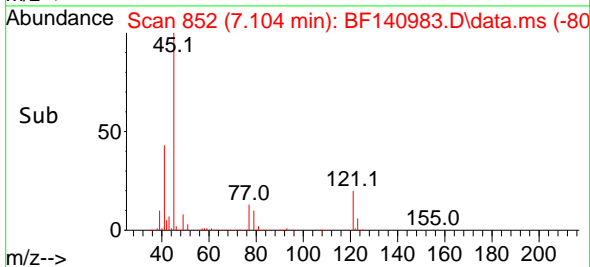
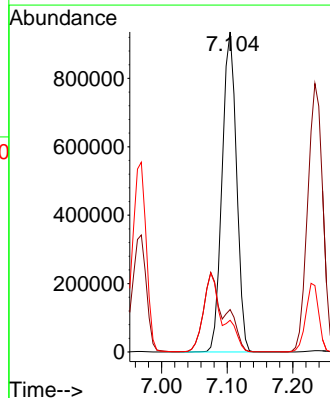
Tgt Ion: 79 Resp: 819344
 Ion Ratio Lower Upper
 79 100
 108 78.6 62.5 93.7
 77 61.6 49.3 73.9

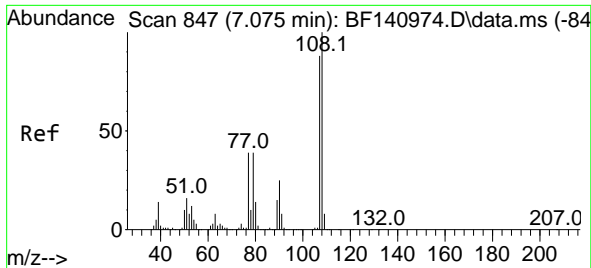


#16
 2,2'-oxybis(1-Chloropropane)
 Concen: 47.948 ng
 RT: 7.104 min Scan# 852
 Delta R.T. -0.006 min
 Lab File: BF140983.D
 Acq: 27 Dec 2024 09:11



Tgt Ion: 45 Resp: 1421505
 Ion Ratio Lower Upper
 45 100
 77 13.2 0.0 33.1
 79 9.9 0.0 30.1





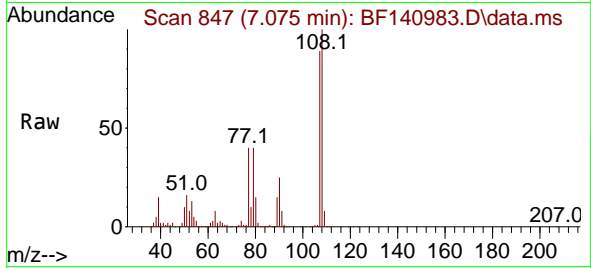
#17
 2-Methylphenol
 Concen: 47.783 ng
 RT: 7.075 min Scan# 84
 Delta R.T. 0.000 min
 Lab File: BF140983.D
 Acq: 27 Dec 2024 09:11

Instrument :

BNA_F

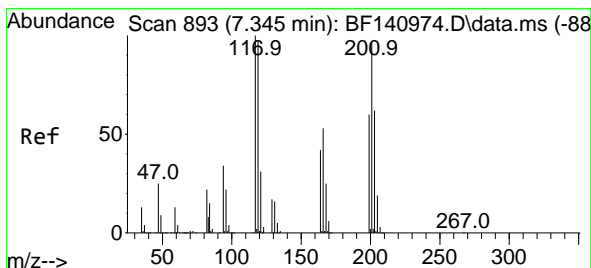
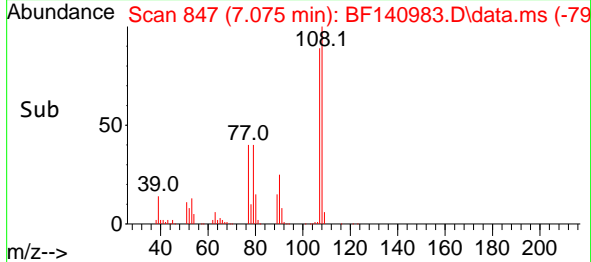
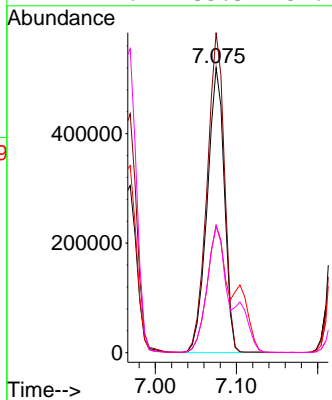
ClientSampleId :

PB165785BS



Tgt Ion:107 Resp: 762845

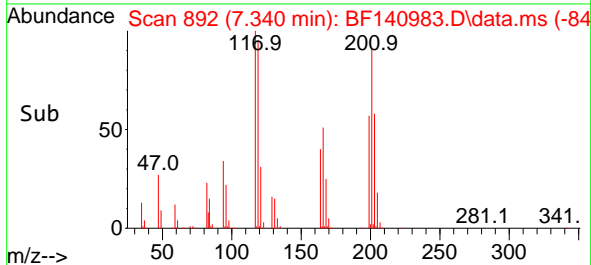
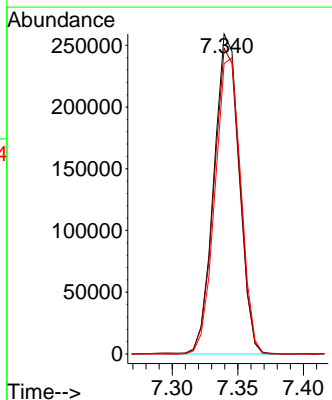
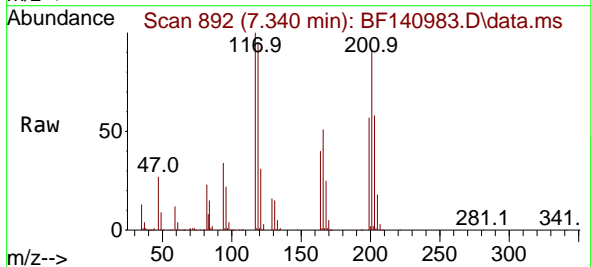
Ion	Ratio	Lower	Upper
107	100		
108	112.3	90.6	136.0
77	44.7	35.3	52.9
79	44.4	35.3	52.9

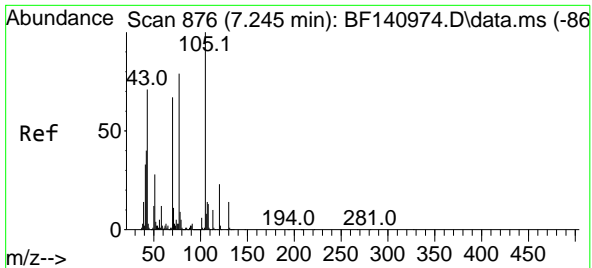


#18
 Hexachloroethane
 Concen: 46.012 ng
 RT: 7.340 min Scan# 892
 Delta R.T. -0.006 min
 Lab File: BF140983.D
 Acq: 27 Dec 2024 09:11

Tgt Ion:117 Resp: 349442

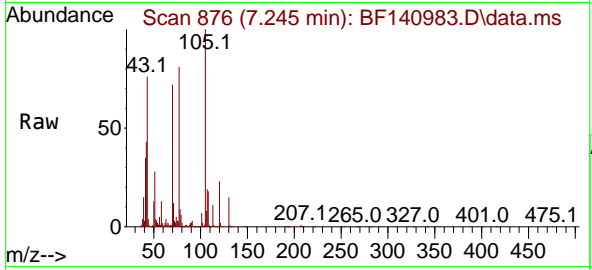
Ion	Ratio	Lower	Upper
117	100		
119	95.5	77.5	116.3
201	90.8	77.4	116.2





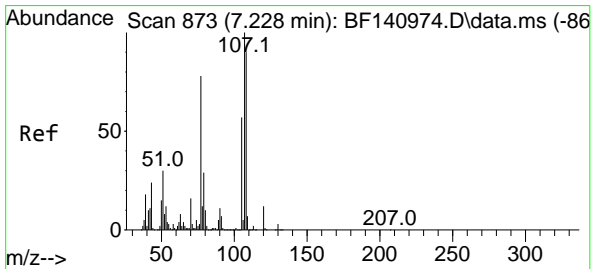
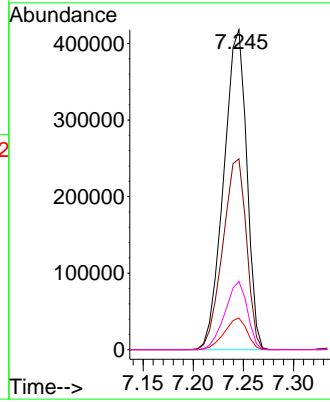
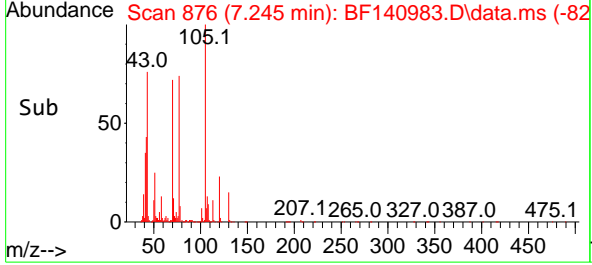
#19
 n-Nitroso-di-n-propylamine
 Concen: 46.467 ng
 RT: 7.245 min Scan# 81
 Delta R.T. 0.000 min
 Lab File: BF140983.D
 Acq: 27 Dec 2024 09:11

Instrument :
 BNA_F
 ClientSampleId :
 PB165785BS

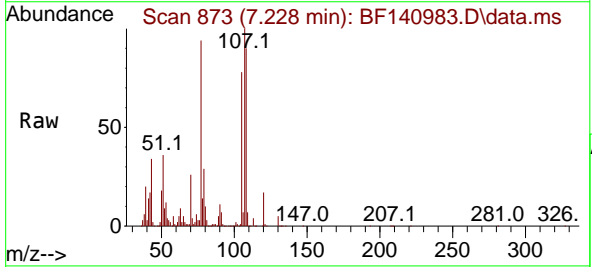


Tgt Ion: 70 Resp: 668406

Ion	Ratio	Lower	Upper
70	100		
42	59.6	48.1	72.1
101	9.9	7.6	11.4
130	21.3	16.6	24.8

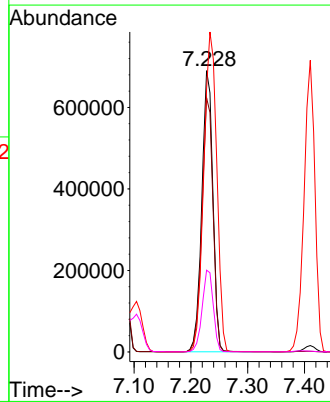
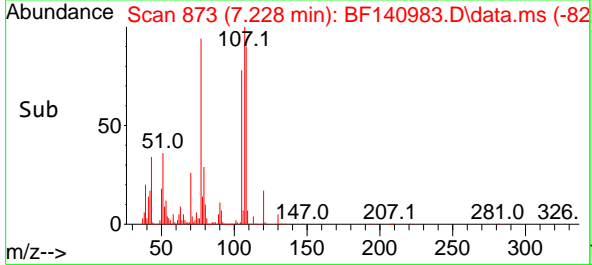


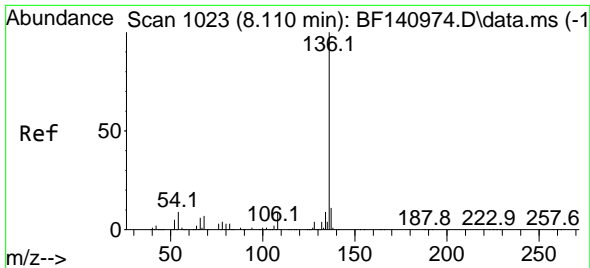
#20
 3+4-Methylphenols
 Concen: 46.327 ng
 RT: 7.228 min Scan# 873
 Delta R.T. 0.000 min
 Lab File: BF140983.D
 Acq: 27 Dec 2024 09:11



Tgt Ion: 107 Resp: 935952

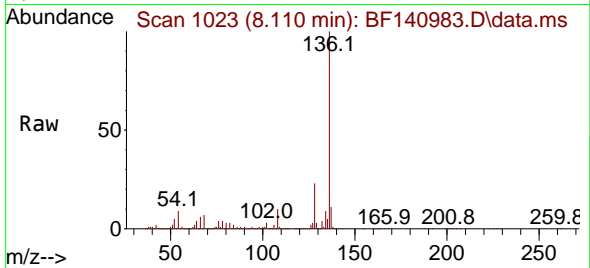
Ion	Ratio	Lower	Upper
107	100		
108	90.3	69.6	109.6
77	93.6	57.6	97.6
79	29.1	8.8	48.8





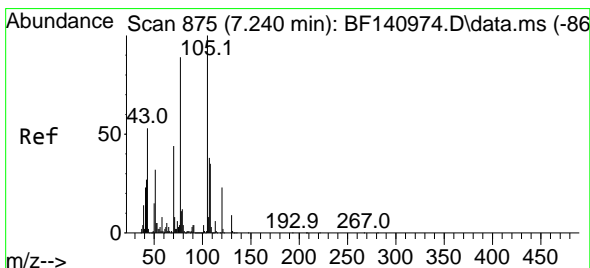
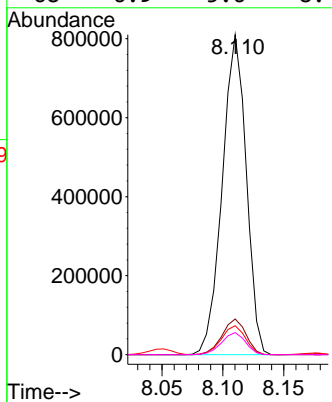
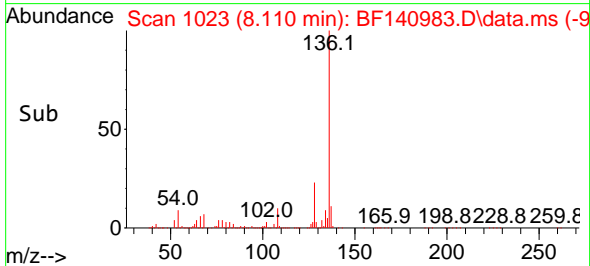
#21
 Naphthalene-d8
 Concen: 20.000 ng
 RT: 8.110 min Scan# 1023
 Delta R.T. 0.000 min
 Lab File: BF140983.D
 Acq: 27 Dec 2024 09:11

Instrument :
 BNA_F
 ClientSampleId :
 PB165785BS

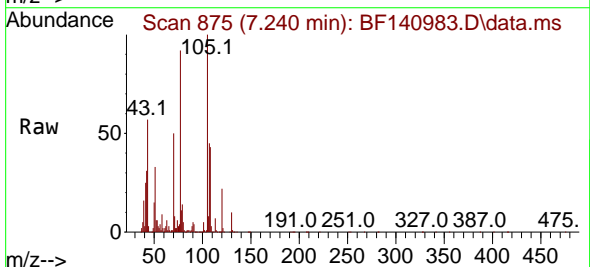


Tgt Ion:136 Resp: 1108868

Ion	Ratio	Lower	Upper
136	100		
137	11.1	9.0	13.4
54	9.1	7.6	11.4
68	6.9	5.6	8.4

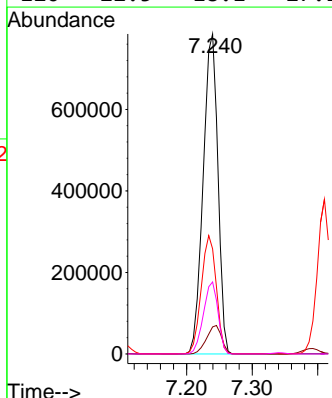
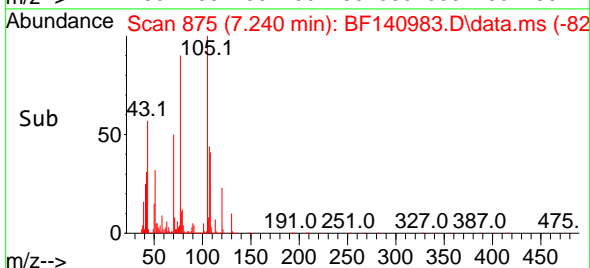


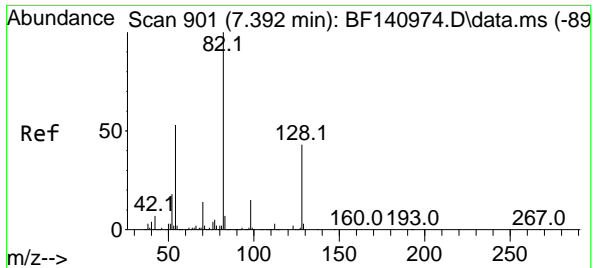
#22
 Acetophenone
 Concen: 45.207 ng
 RT: 7.240 min Scan# 875
 Delta R.T. 0.000 min
 Lab File: BF140983.D
 Acq: 27 Dec 2024 09:11



Tgt Ion:105 Resp: 1229730

Ion	Ratio	Lower	Upper
105	100		
71	8.4	6.1	9.1
51	32.9	25.8	38.6
120	22.5	18.1	27.1



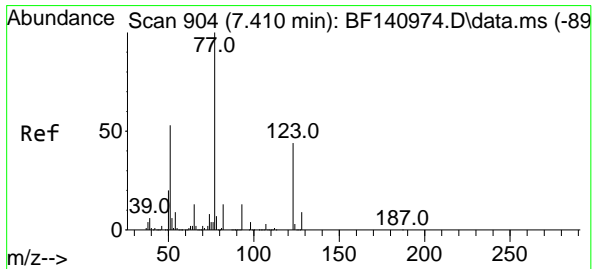
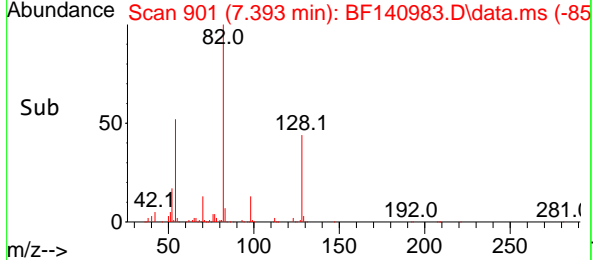
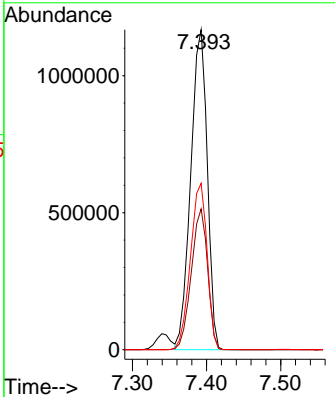
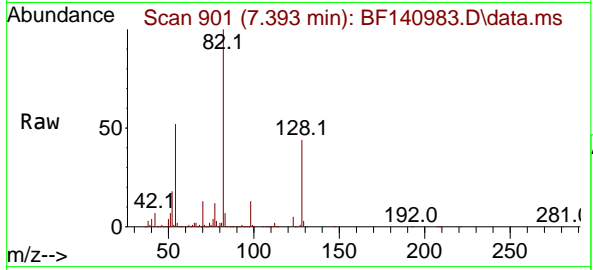


#23
 Nitrobenzene-d5
 Concen: 104.133 ng
 RT: 7.393 min Scan# 901
 Delta R.T. 0.000 min
 Lab File: BF140983.D
 Acq: 27 Dec 2024 09:11

Instrument : BNA_F
 ClientSampleId : PB165785BS

Tgt Ion: 82 Resp: 1804830

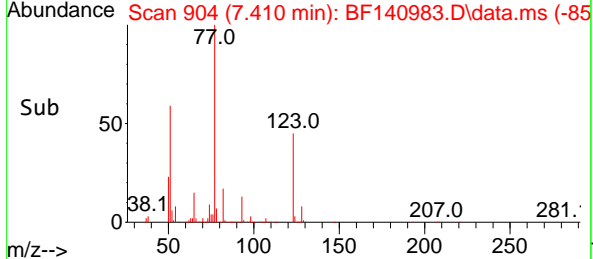
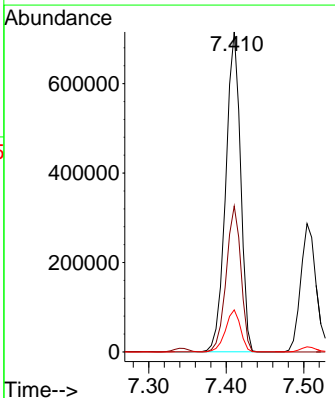
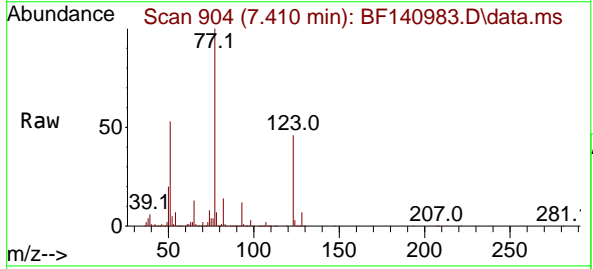
Ion	Ratio	Lower	Upper
82	100		
128	44.0	34.4	51.6
54	52.0	42.4	63.6

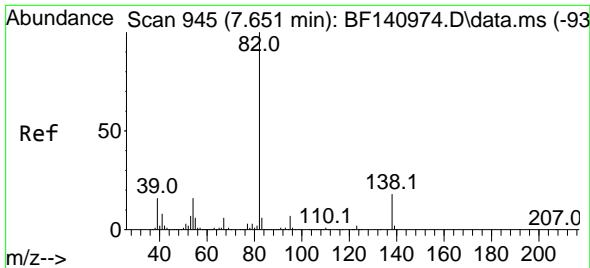


#24
 Nitrobenzene
 Concen: 49.065 ng
 RT: 7.410 min Scan# 904
 Delta R.T. 0.000 min
 Lab File: BF140983.D
 Acq: 27 Dec 2024 09:11

Tgt Ion: 77 Resp: 950229

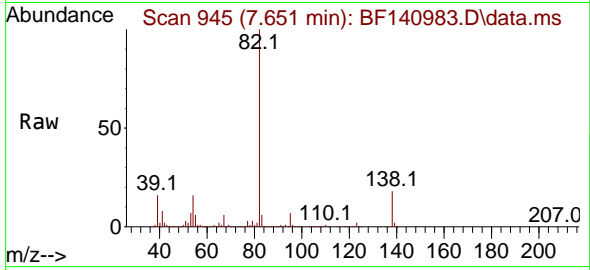
Ion	Ratio	Lower	Upper
77	100		
123	45.6	35.4	53.2
65	13.1	10.7	16.1



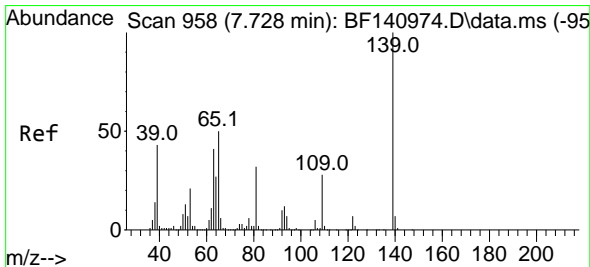
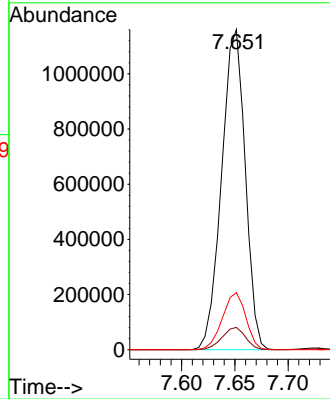
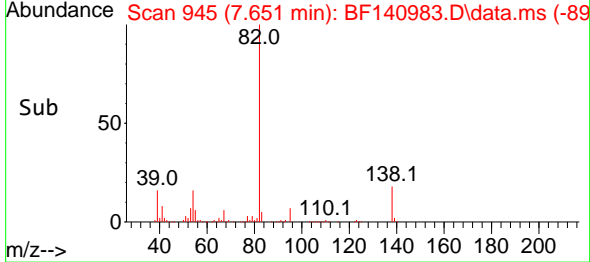


#25
 Isophorone
 Concen: 47.385 ng
 RT: 7.651 min Scan# 945
 Delta R.T. 0.000 min
 Lab File: BF140983.D
 Acq: 27 Dec 2024 09:11

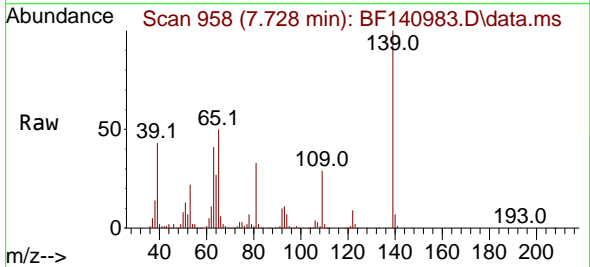
Instrument :
 BNA_F
 ClientSampleId :
 PB165785BS



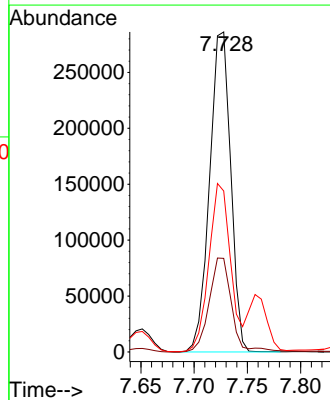
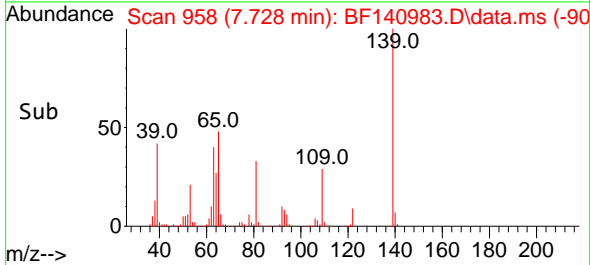
Tgt Ion: 82 Resp: 1787139
 Ion Ratio Lower Upper
 82 100
 95 6.9 5.6 8.4
 138 17.9 14.6 21.8

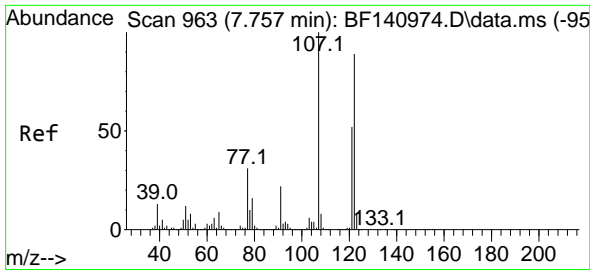


#26
 2-Nitrophenol
 Concen: 49.482 ng
 RT: 7.728 min Scan# 958
 Delta R.T. -0.000 min
 Lab File: BF140983.D
 Acq: 27 Dec 2024 09:11



Tgt Ion: 139 Resp: 394188
 Ion Ratio Lower Upper
 139 100
 109 29.2 22.2 33.4
 65 50.3 40.2 60.4





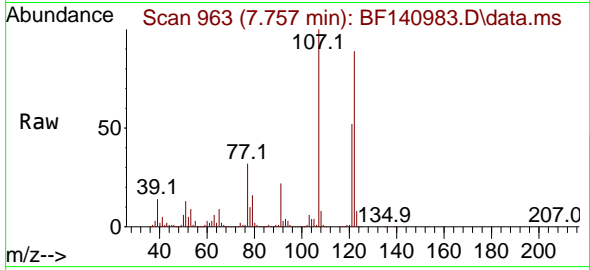
#27
 2,4-Dimethylphenol
 Concen: 55.641 ng
 RT: 7.757 min Scan# 90
 Delta R.T. 0.000 min
 Lab File: BF140983.D
 Acq: 27 Dec 2024 09:11

Instrument :

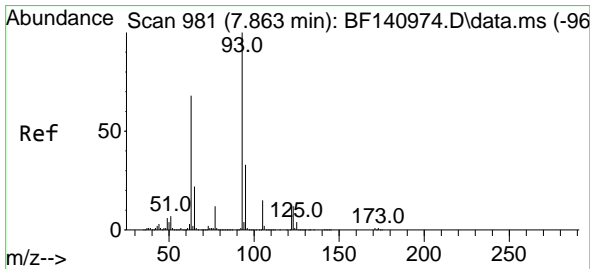
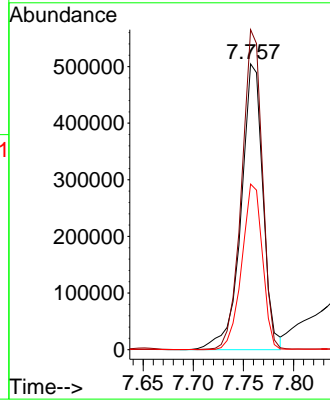
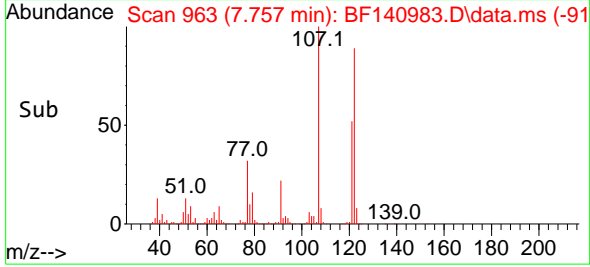
BNA_F

ClientSampleId :

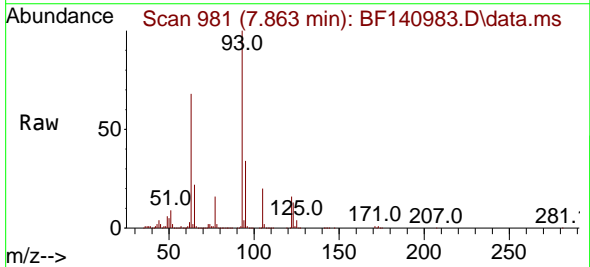
PB165785BS



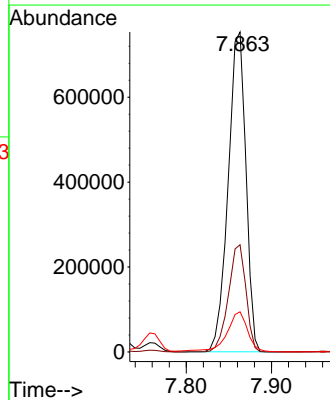
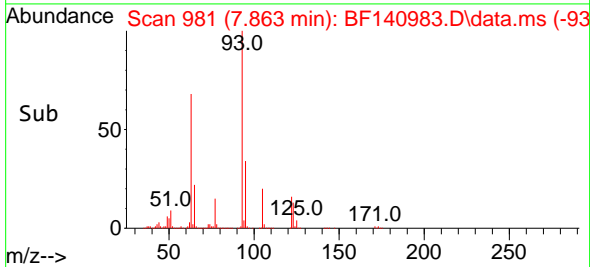
Tgt Ion:122 Resp: 766947
 Ion Ratio Lower Upper
 122 100
 107 112.0 89.4 134.2
 121 58.0 46.7 70.1

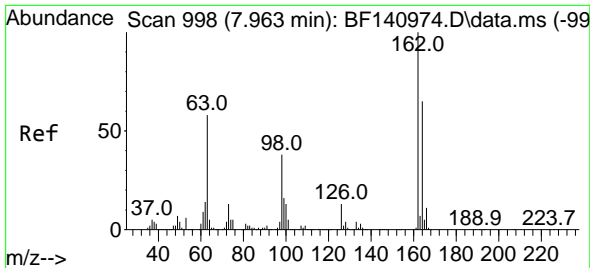


#28
 bis(2-Chloroethoxy)methane
 Concen: 45.580 ng
 RT: 7.863 min Scan# 981
 Delta R.T. 0.000 min
 Lab File: BF140983.D
 Acq: 27 Dec 2024 09:11



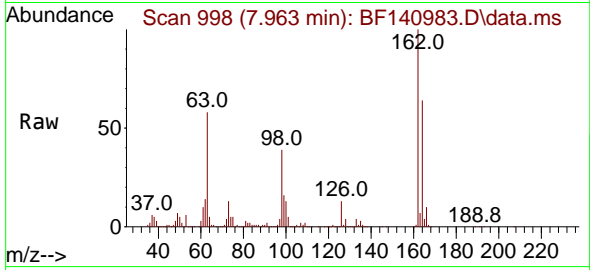
Tgt Ion: 93 Resp: 1089173
 Ion Ratio Lower Upper
 93 100
 95 33.5 26.2 39.4
 123 12.5 9.9 14.9



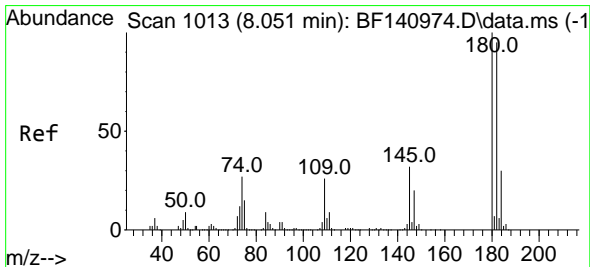
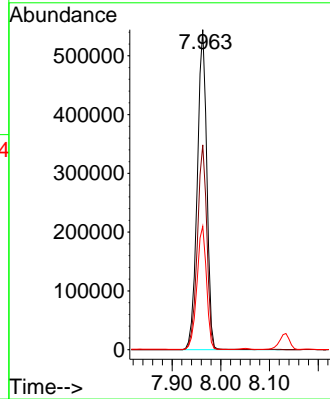
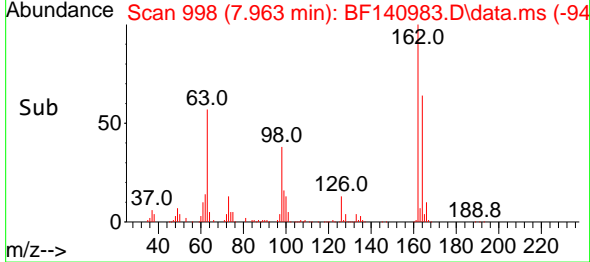


#29
 2,4-Dichlorophenol
 Concen: 47.644 ng
 RT: 7.963 min Scan# 998
 Delta R.T. 0.000 min
 Lab File: BF140983.D
 Acq: 27 Dec 2024 09:11

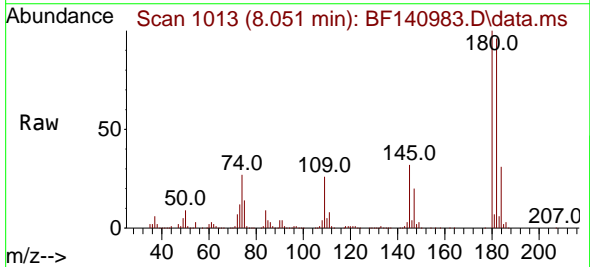
Instrument :
 BNA_F
 ClientSampleId :
 PB165785BS



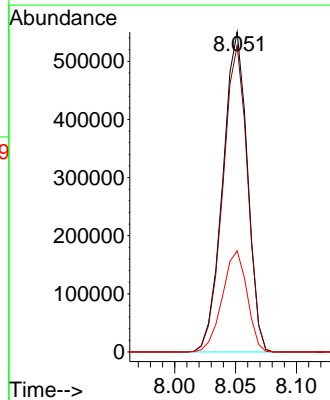
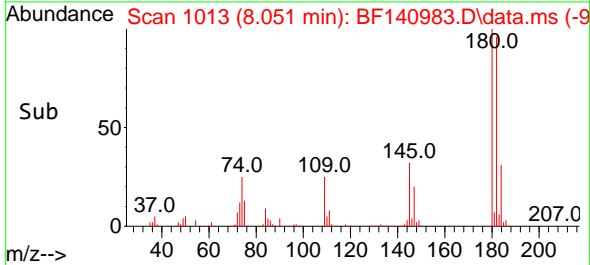
Tgt Ion:162 Resp: 744817
 Ion Ratio Lower Upper
 162 100
 164 64.0 44.8 84.8
 98 38.6 18.6 58.6

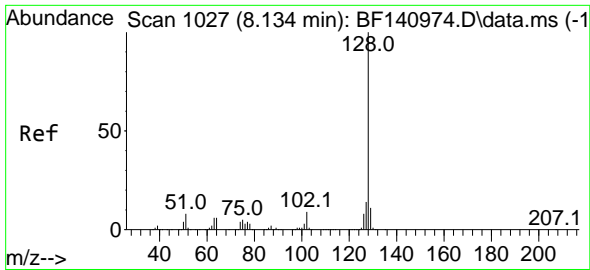


#30
 1,2,4-Trichlorobenzene
 Concen: 43.706 ng
 RT: 8.051 min Scan# 1013
 Delta R.T. 0.000 min
 Lab File: BF140983.D
 Acq: 27 Dec 2024 09:11



Tgt Ion:180 Resp: 773334
 Ion Ratio Lower Upper
 180 100
 182 95.8 76.2 114.4
 145 31.6 25.4 38.2



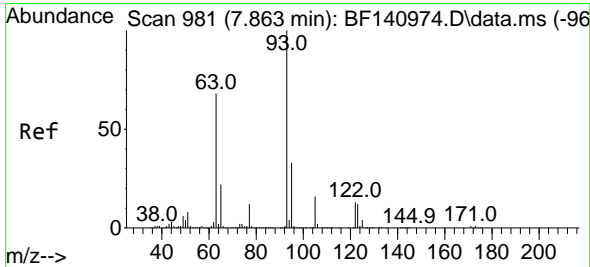
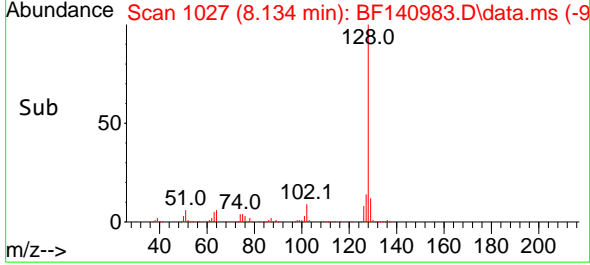
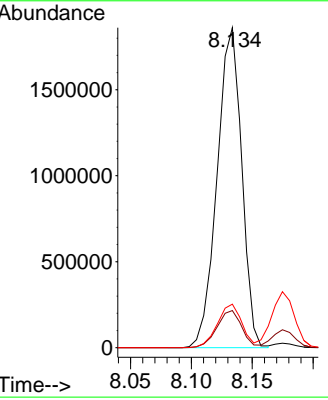
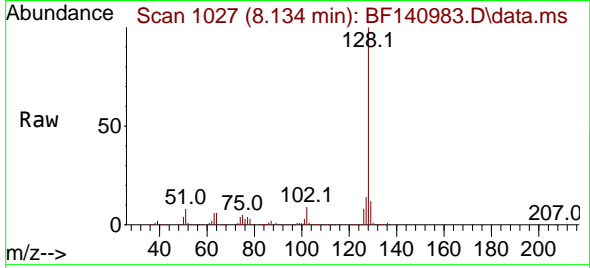


#31
 Naphthalene
 Concen: 44.704 ng
 RT: 8.134 min Scan# 1027
 Delta R.T. 0.000 min
 Lab File: BF140983.D
 Acq: 27 Dec 2024 09:11

Instrument : BNA_F
 ClientSampleId : PB165785BS

Tgt Ion:128 Resp: 2612061

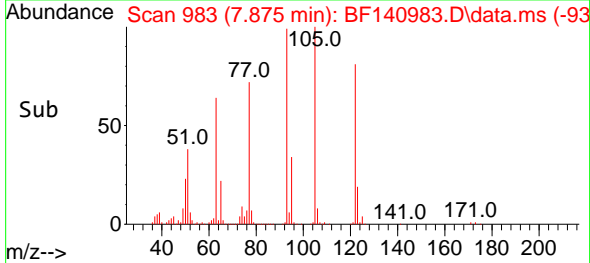
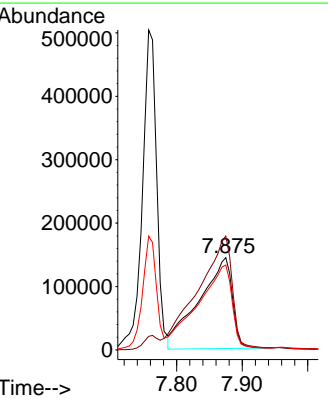
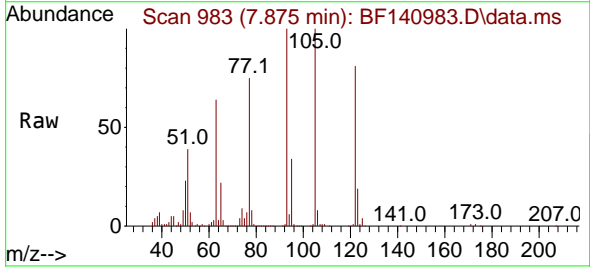
Ion	Ratio	Lower	Upper
128	100		
129	11.6	9.2	13.8
127	13.6	11.0	16.4

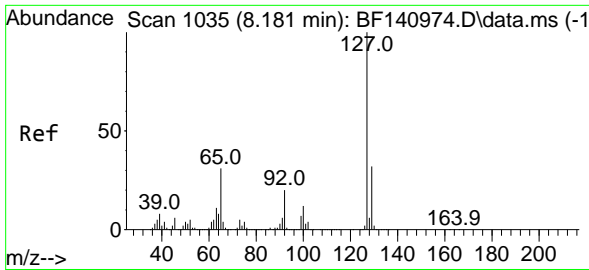


#32
 Benzoic acid
 Concen: 45.180 ng
 RT: 7.875 min Scan# 983
 Delta R.T. 0.012 min
 Lab File: BF140983.D
 Acq: 27 Dec 2024 09:11

Tgt Ion:122 Resp: 506392

Ion	Ratio	Lower	Upper
122	100		
105	123.5	105.4	145.4
77	92.1	76.4	116.4





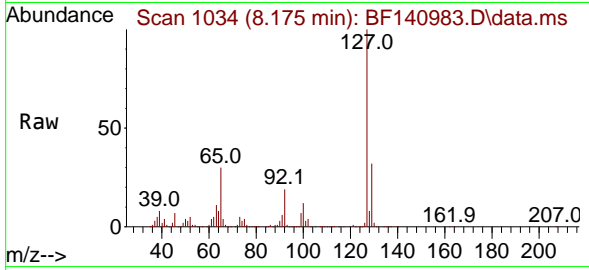
#33
 4-Chloroaniline
 Concen: 20.267 ng
 RT: 8.175 min Scan# 1034
 Delta R.T. -0.006 min
 Lab File: BF140983.D
 Acq: 27 Dec 2024 09:11

Instrument :

BNA_F

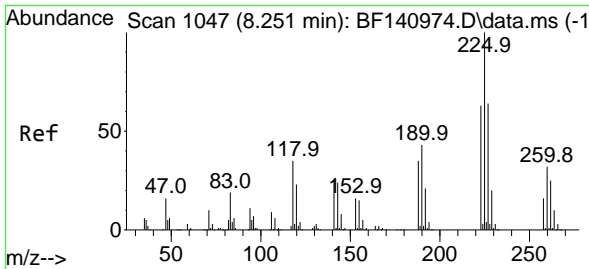
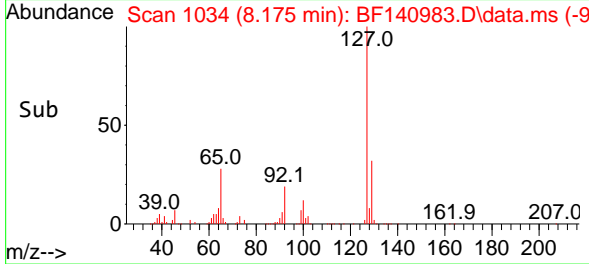
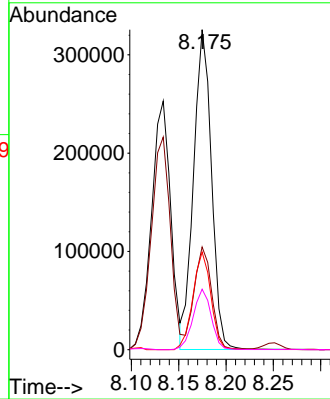
ClientSampleId :

PB165785BS



Tgt Ion:127 Resp: 428402

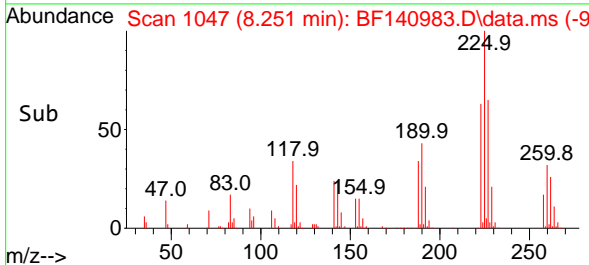
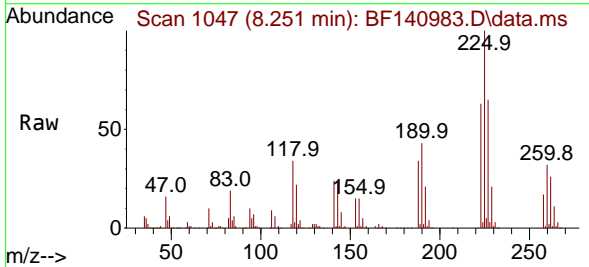
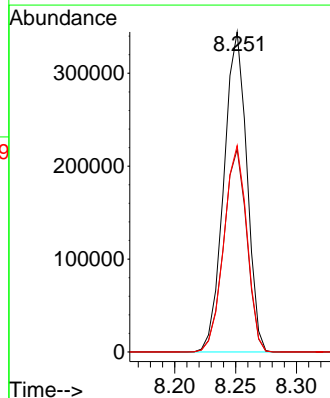
Ion	Ratio	Lower	Upper
127	100		
129	32.1	26.1	39.1
65	30.5	24.6	37.0
92	18.9	15.8	23.6

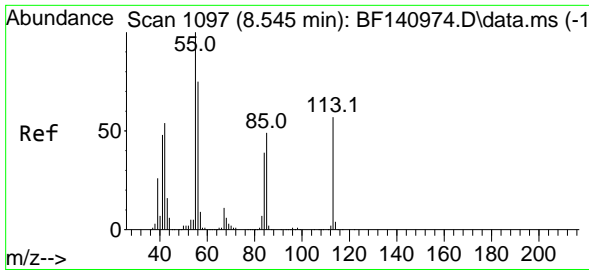


#34
 Hexachlorobutadiene
 Concen: 43.371 ng
 RT: 8.251 min Scan# 1047
 Delta R.T. 0.000 min
 Lab File: BF140983.D
 Acq: 27 Dec 2024 09:11

Tgt Ion:225 Resp: 452413

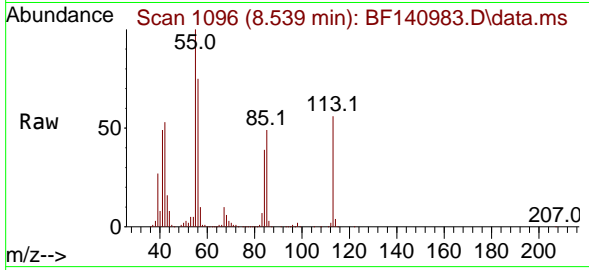
Ion	Ratio	Lower	Upper
225	100		
223	63.3	50.3	75.5
227	64.5	50.8	76.2



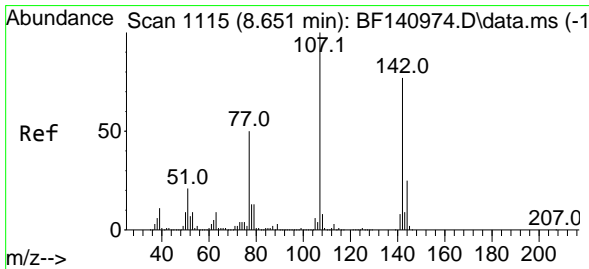
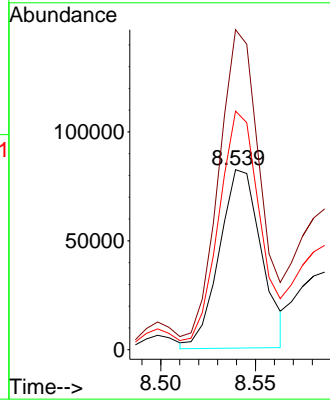
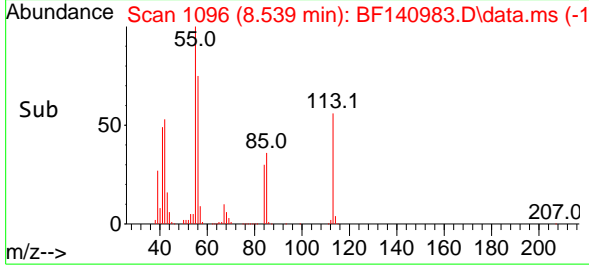


#35
 Caprolactam
 Concen: 23.891 ng
 RT: 8.539 min Scan# 1096
 Delta R.T. -0.006 min
 Lab File: BF140983.D
 Acq: 27 Dec 2024 09:11

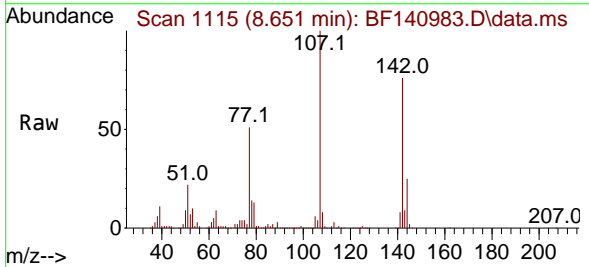
Instrument : BNA_F
 ClientSampleId : PB165785BS



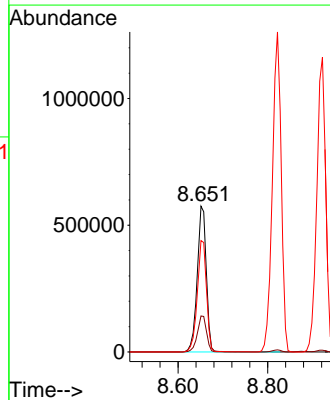
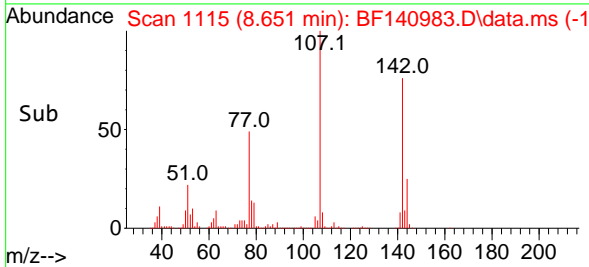
Tgt Ion:113 Resp: 126970
 Ion Ratio Lower Upper
 113 100
 55 177.8 156.6 196.6
 56 132.6 111.7 151.7

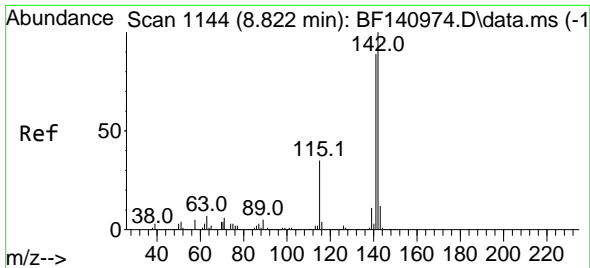


#36
 4-Chloro-3-methylphenol
 Concen: 46.700 ng
 RT: 8.651 min Scan# 1115
 Delta R.T. 0.000 min
 Lab File: BF140983.D
 Acq: 27 Dec 2024 09:11



Tgt Ion:107 Resp: 810772
 Ion Ratio Lower Upper
 107 100
 144 24.7 19.9 29.9
 142 76.5 61.8 92.8

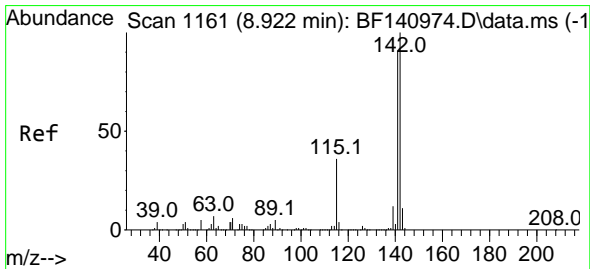
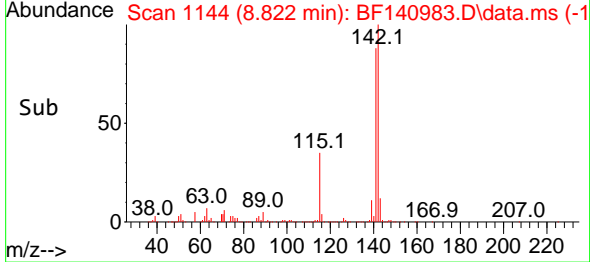
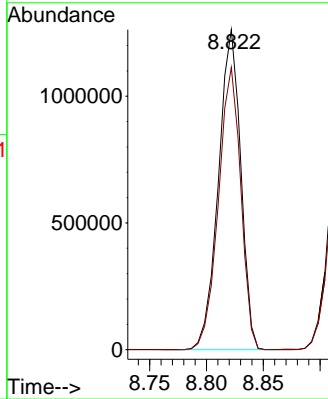
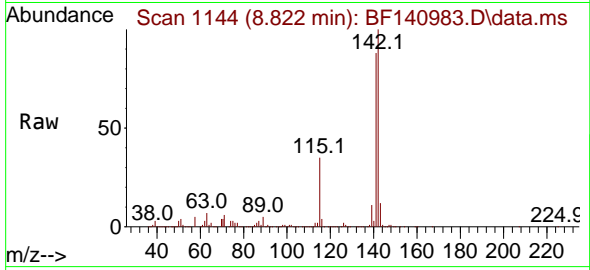




#37
 2-Methylnaphthalene
 Concen: 46.090 ng
 RT: 8.822 min Scan# 1144
 Delta R.T. 0.000 min
 Lab File: BF140983.D
 Acq: 27 Dec 2024 09:11

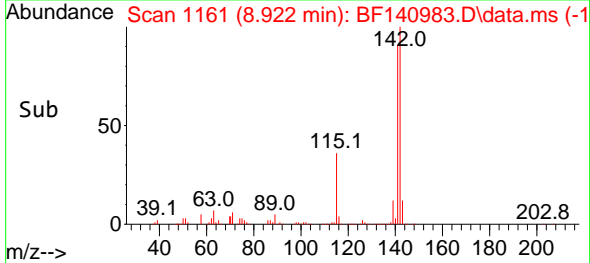
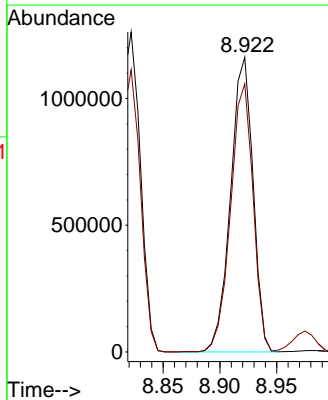
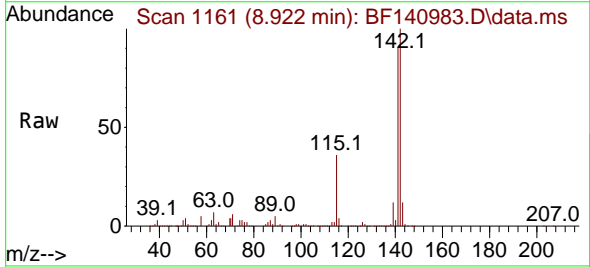
Instrument :
 BNA_F
 ClientSampleId :
 PB165785BS

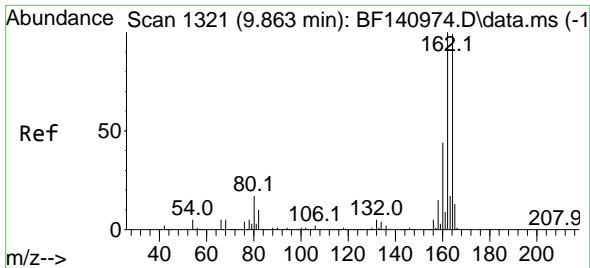
Tgt Ion:142 Resp: 1722840
 Ion Ratio Lower Upper
 142 100
 141 88.2 71.1 106.7



#38
 1-Methylnaphthalene
 Concen: 43.506 ng
 RT: 8.922 min Scan# 1161
 Delta R.T. 0.000 min
 Lab File: BF140983.D
 Acq: 27 Dec 2024 09:11

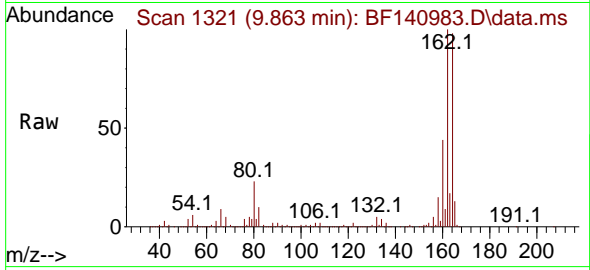
Tgt Ion:142 Resp: 1598257
 Ion Ratio Lower Upper
 142 100
 141 91.0 72.7 109.1



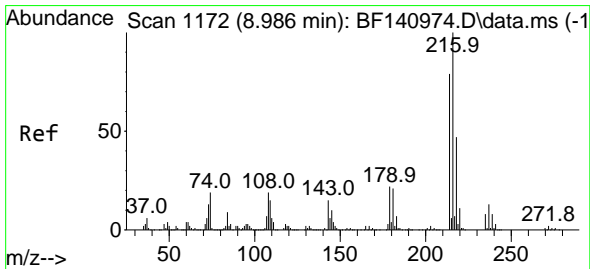
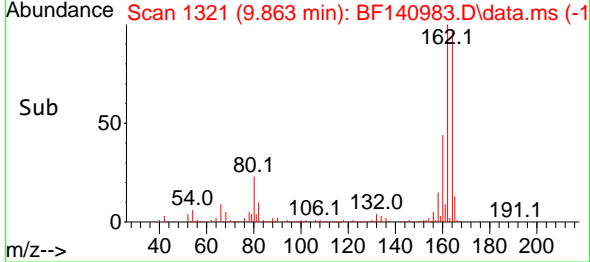
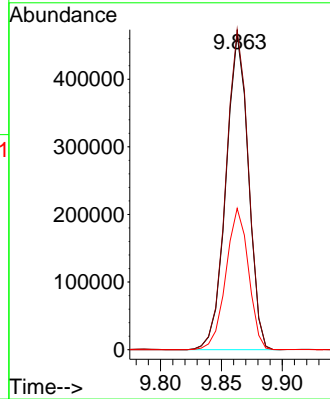


#39
 Acenaphthene-d10
 Concen: 20.000 ng
 RT: 9.863 min Scan# 111
 Delta R.T. 0.000 min
 Lab File: BF140983.D
 Acq: 27 Dec 2024 09:11

Instrument :
 BNA_F
 ClientSampleId :
 PB165785BS

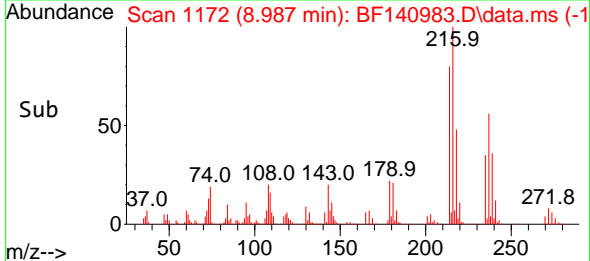
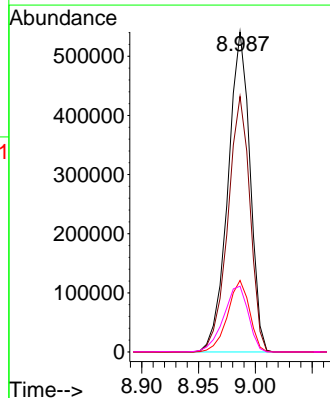
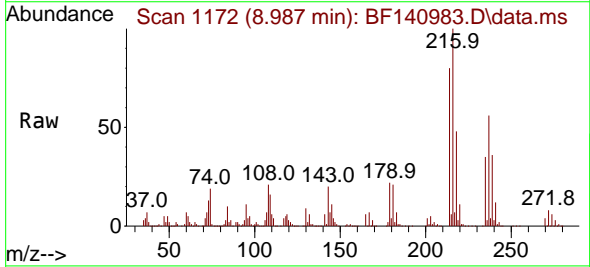


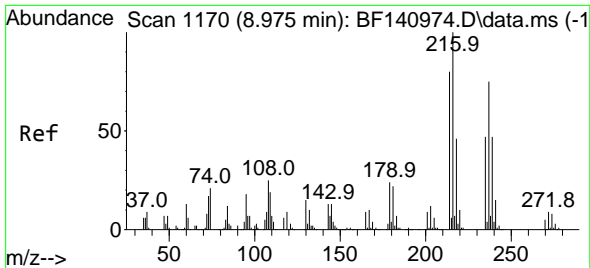
Tgt Ion:164 Resp: 597046
 Ion Ratio Lower Upper
 164 100
 162 101.5 80.6 120.8
 160 44.8 35.7 53.5



#40
 1,2,4,5-Tetrachlorobenzene
 Concen: 44.438 ng
 RT: 8.987 min Scan# 1172
 Delta R.T. 0.000 min
 Lab File: BF140983.D
 Acq: 27 Dec 2024 09:11

Tgt Ion:216 Resp: 729914
 Ion Ratio Lower Upper
 216 100
 214 79.8 63.0 94.6
 179 22.3 17.9 26.9
 108 23.2 16.2 24.2



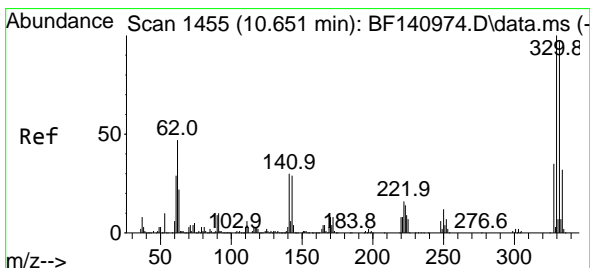
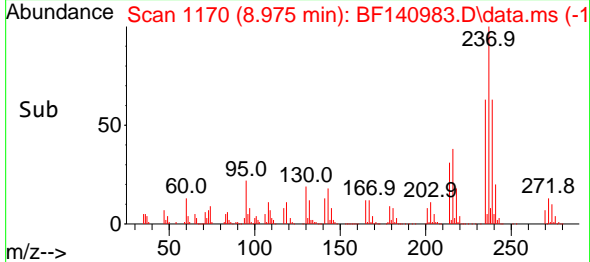
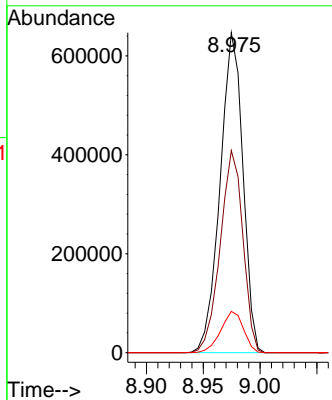
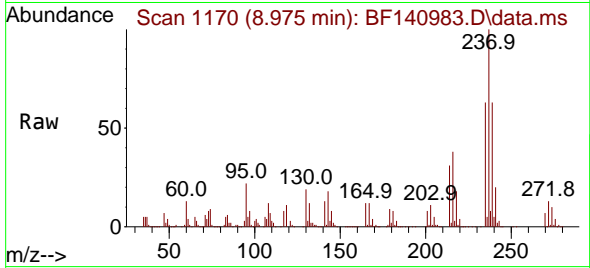


#41
 Hexachlorocyclopentadiene
 Concen: 165.760 ng
 RT: 8.975 min Scan# 1170
 Delta R.T. 0.000 min
 Lab File: BF140983.D
 Acq: 27 Dec 2024 09:11

Instrument :
 BNA_F
 ClientSampleId :
 PB165785BS

Tgt Ion:237 Resp: 902266

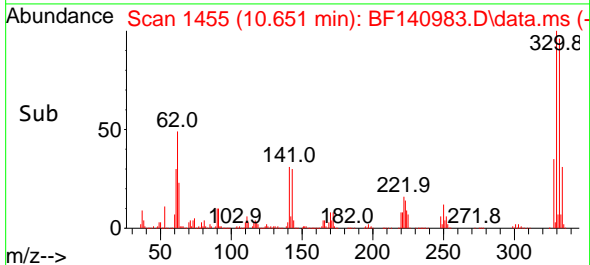
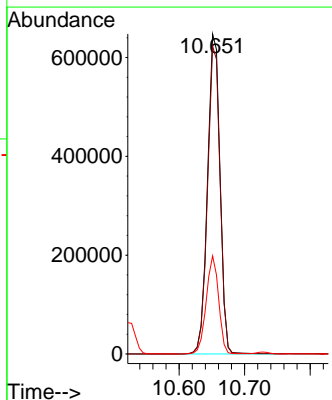
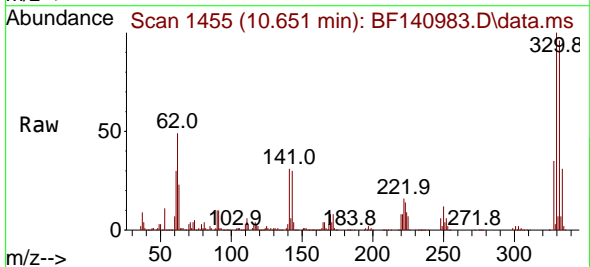
Ion	Ratio	Lower	Upper
237	100		
235	63.1	43.4	83.4
272	12.9	0.0	32.6

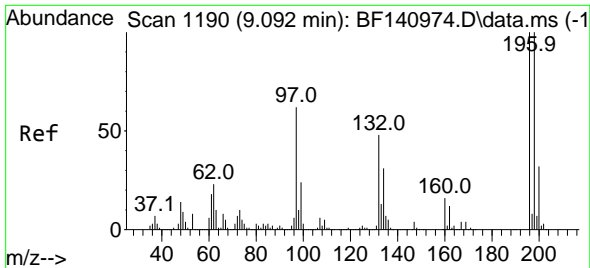


#42
 2,4,6-Tribromophenol
 Concen: 148.523 ng
 RT: 10.651 min Scan# 1455
 Delta R.T. 0.000 min
 Lab File: BF140983.D
 Acq: 27 Dec 2024 09:11

Tgt Ion:330 Resp: 861659

Ion	Ratio	Lower	Upper
330	100		
332	96.4	78.0	117.0
141	30.4	26.4	39.6



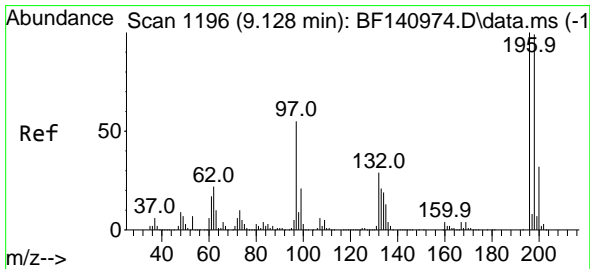
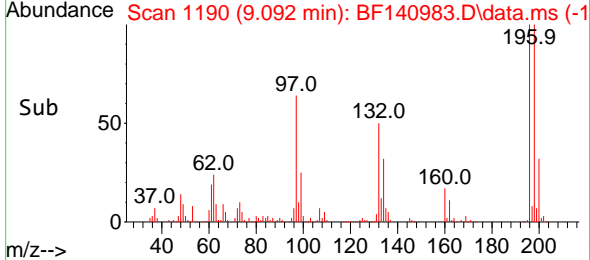
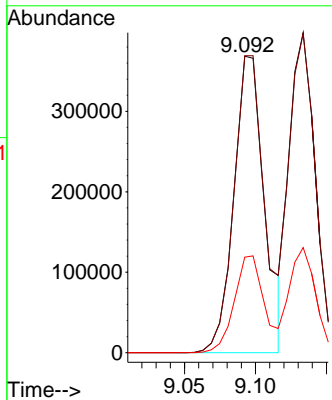
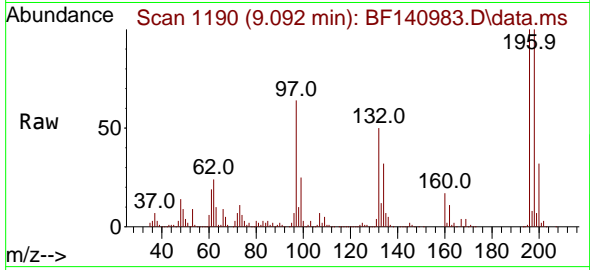


#43
 2,4,6-Trichlorophenol
 Concen: 50.352 ng
 RT: 9.092 min Scan# 1190
 Delta R.T. 0.000 min
 Lab File: BF140983.D
 Acq: 27 Dec 2024 09:11

Instrument : BNA_F
 ClientSampleId : PB165785BS

Tgt Ion:196 Resp: 550450

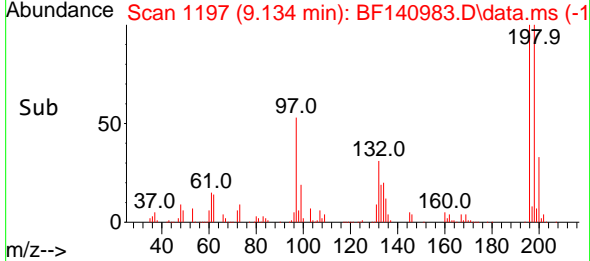
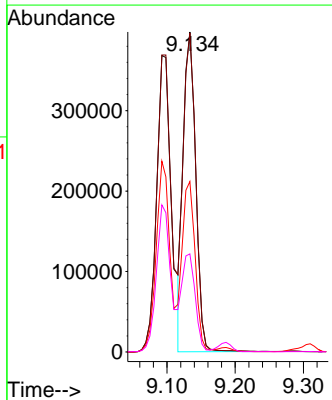
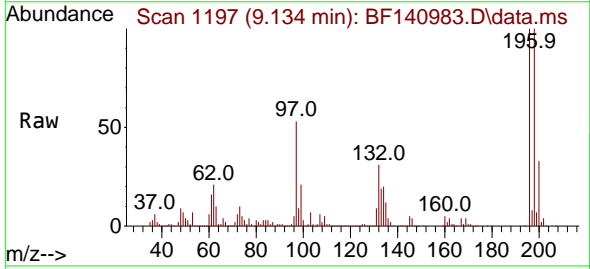
Ion	Ratio	Lower	Upper
196	100		
198	100.2	80.2	120.4
200	32.2	25.8	38.6

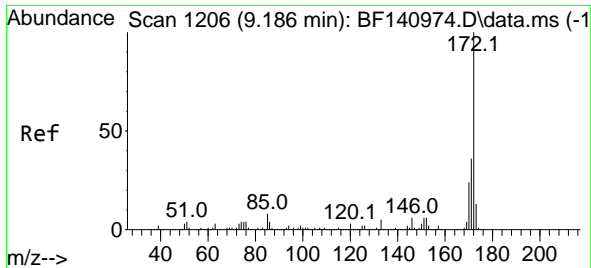


#44
 2,4,5-Trichlorophenol
 Concen: 45.462 ng
 RT: 9.134 min Scan# 1197
 Delta R.T. 0.006 min
 Lab File: BF140983.D
 Acq: 27 Dec 2024 09:11

Tgt Ion:196 Resp: 508518

Ion	Ratio	Lower	Upper
196	100		
198	99.7	79.9	119.9
97	53.2	44.3	66.5
132	30.7	24.7	37.1



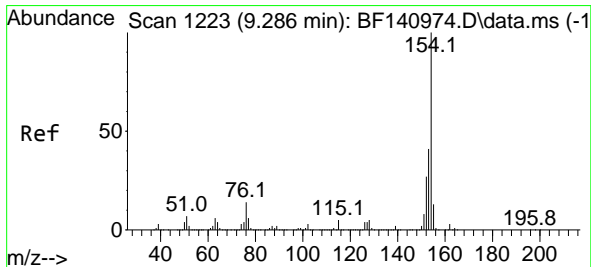
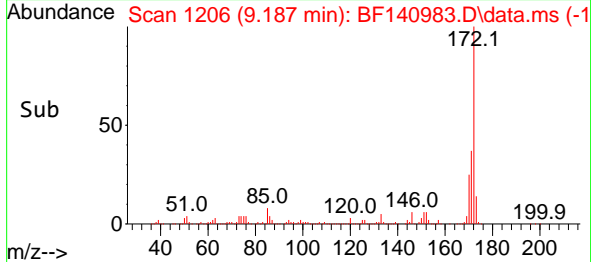
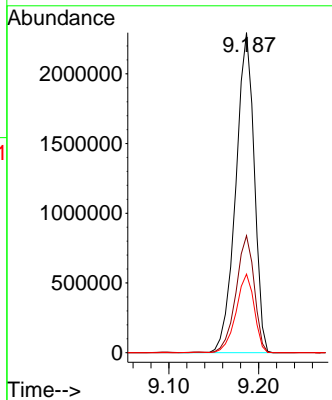
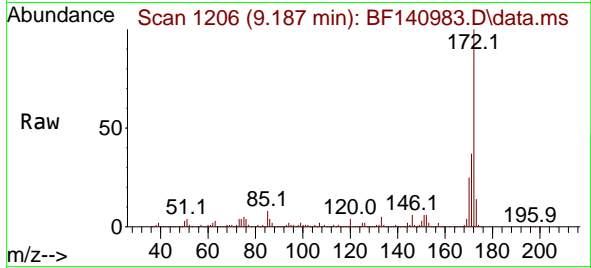


#45
 2-Fluorobiphenyl
 Concen: 87.386 ng
 RT: 9.187 min Scan# 11
 Delta R.T. 0.000 min
 Lab File: BF140983.D
 Acq: 27 Dec 2024 09:11

Instrument : BNA_F
 Client Sample Id : PB165785BS

Tgt Ion:172 Resp: 3274669

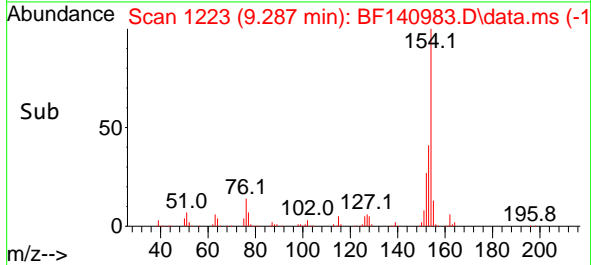
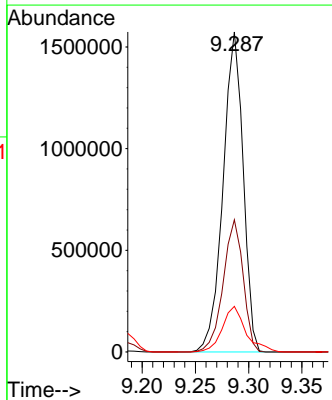
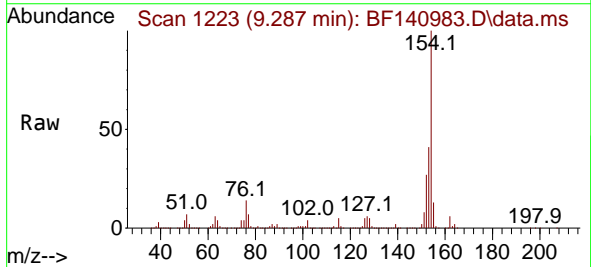
Ion	Ratio	Lower	Upper
172	100		
171	36.6	29.0	43.4
170	24.6	19.6	29.4

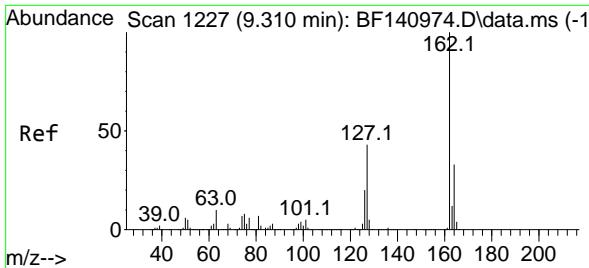


#46
 1,1'-Biphenyl
 Concen: 45.178 ng
 RT: 9.287 min Scan# 1223
 Delta R.T. 0.001 min
 Lab File: BF140983.D
 Acq: 27 Dec 2024 09:11

Tgt Ion:154 Resp: 2065336

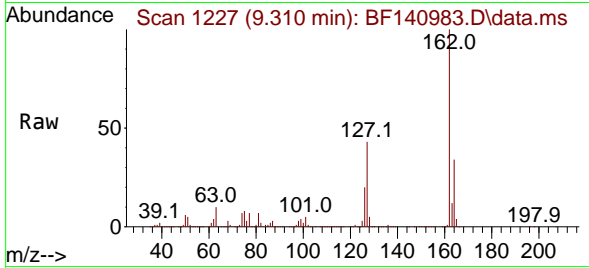
Ion	Ratio	Lower	Upper
154	100		
153	41.3	20.9	60.9
76	14.2	0.0	34.0



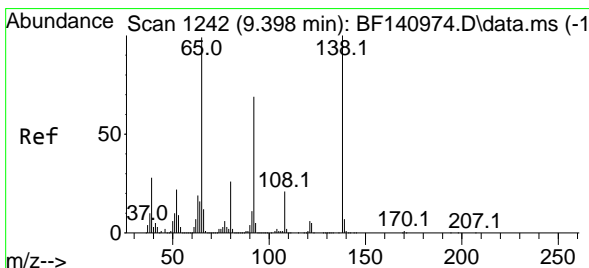
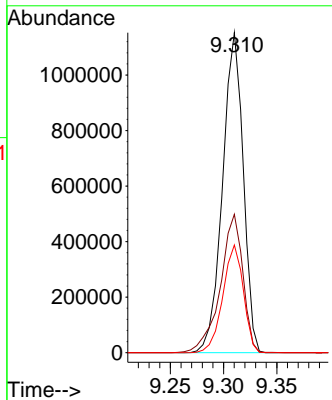
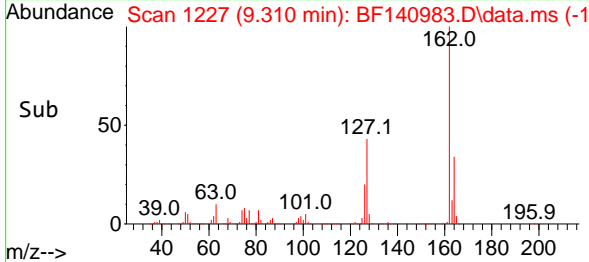


#47
 2-Chloronaphthalene
 Concen: 43.890 ng
 RT: 9.310 min Scan# 11
 Delta R.T. 0.000 min
 Lab File: BF140983.D
 Acq: 27 Dec 2024 09:11

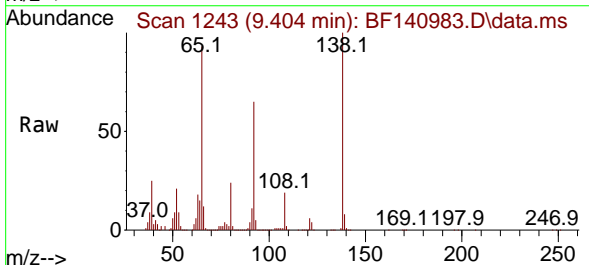
Instrument :
 BNA_F
 ClientSampleId :
 PB165785BS



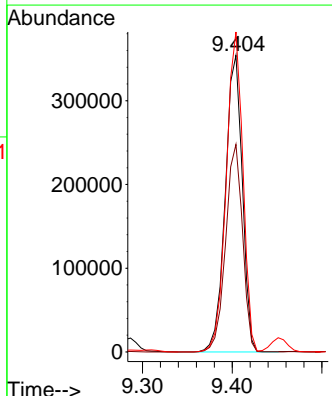
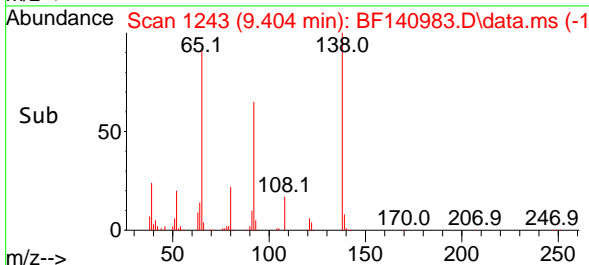
Tgt Ion:162 Resp: 1556159
 Ion Ratio Lower Upper
 162 100
 127 43.2 34.2 51.4
 164 33.6 26.6 40.0

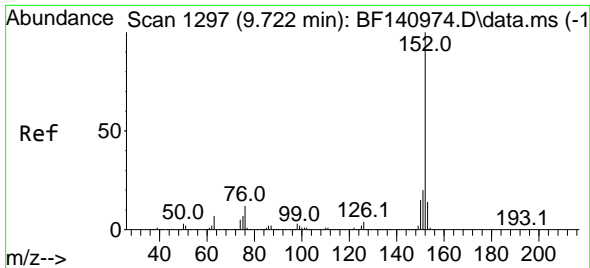


#48
 2-Nitroaniline
 Concen: 50.170 ng
 RT: 9.404 min Scan# 1243
 Delta R.T. 0.006 min
 Lab File: BF140983.D
 Acq: 27 Dec 2024 09:11



Tgt Ion: 65 Resp: 467505
 Ion Ratio Lower Upper
 65 100
 92 70.0 55.6 83.4
 138 107.9 80.5 120.7



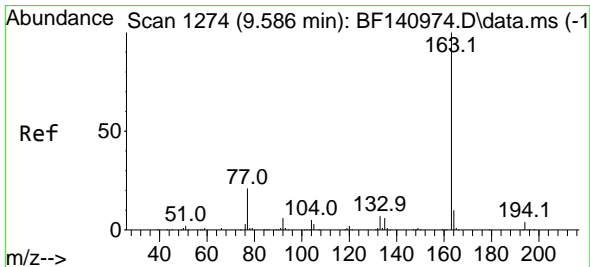
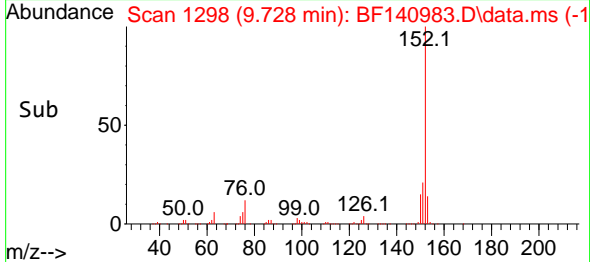
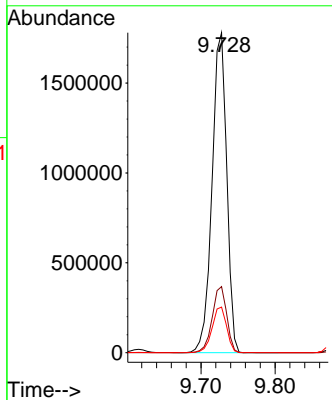
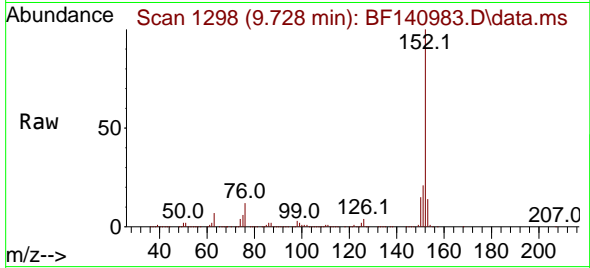


#49
 Acenaphthylene
 Concen: 47.898 ng
 RT: 9.728 min Scan# 11
 Delta R.T. 0.006 min
 Lab File: BF140983.D
 Acq: 27 Dec 2024 09:11

Instrument : BNA_F
 ClientSampleId : PB165785BS

Tgt Ion:152 Resp: 2444717

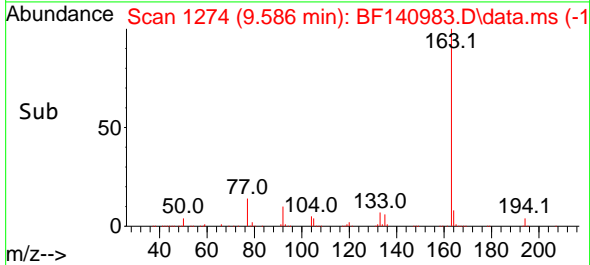
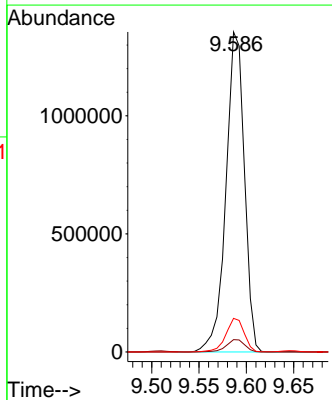
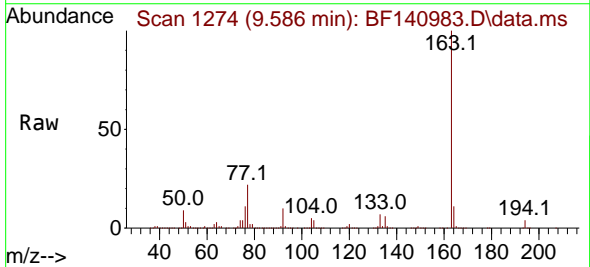
Ion	Ratio	Lower	Upper
152	100		
151	20.7	16.2	24.4
153	14.3	11.4	17.0

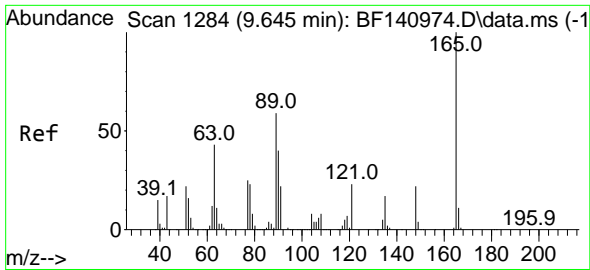


#50
 Dimethylphthalate
 Concen: 46.821 ng
 RT: 9.586 min Scan# 1274
 Delta R.T. 0.000 min
 Lab File: BF140983.D
 Acq: 27 Dec 2024 09:11

Tgt Ion:163 Resp: 1838728

Ion	Ratio	Lower	Upper
163	100		
194	3.8	3.1	4.7
164	10.5	8.3	12.5

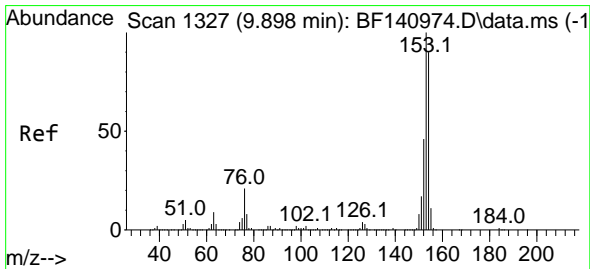
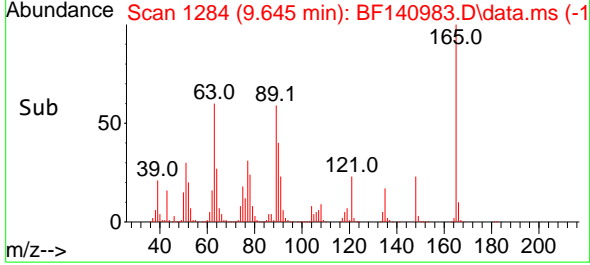
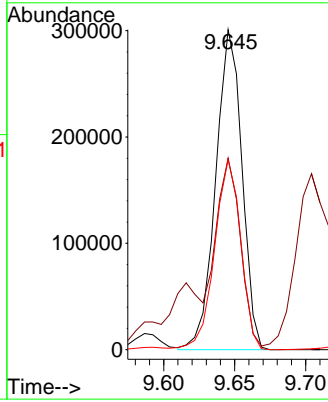
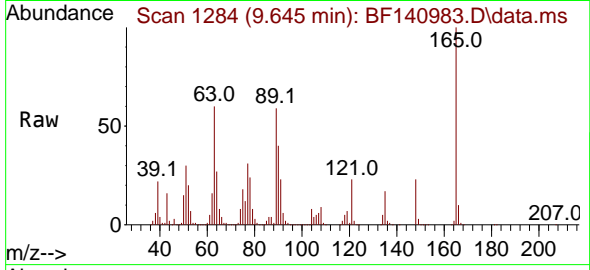




#51
 2,6-Dinitrotoluene
 Concen: 48.245 ng
 RT: 9.645 min Scan# 11
 Delta R.T. 0.000 min
 Lab File: BF140983.D
 Acq: 27 Dec 2024 09:11

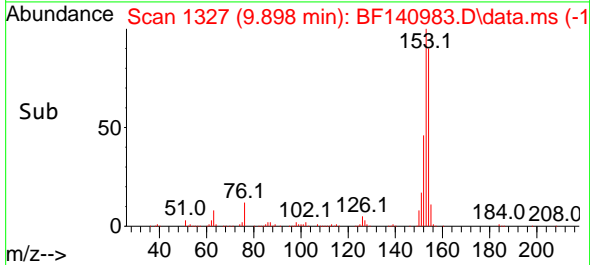
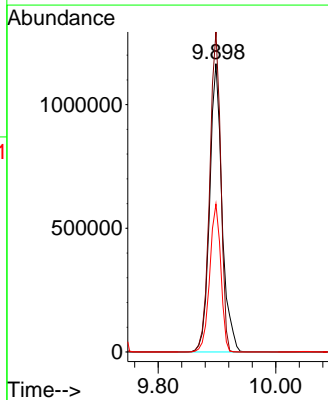
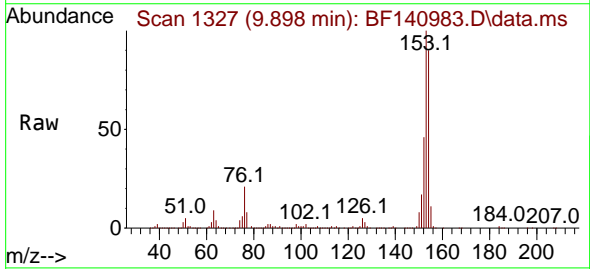
Instrument :
 BNA_F
 ClientSampleId :
 PB165785BS

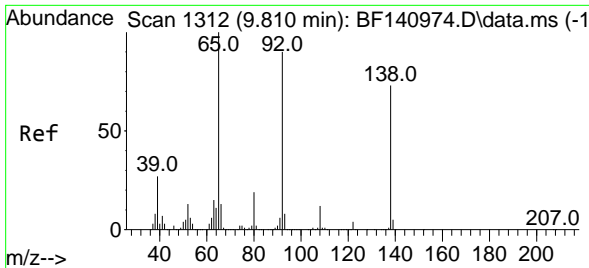
Tgt Ion:165 Resp: 386549
 Ion Ratio Lower Upper
 165 100
 63 59.8 47.1 70.7
 89 59.4 47.0 70.4



#52
 Acenaphthene
 Concen: 49.371 ng
 RT: 9.898 min Scan# 1327
 Delta R.T. 0.000 min
 Lab File: BF140983.D
 Acq: 27 Dec 2024 09:11

Tgt Ion:154 Resp: 1703583
 Ion Ratio Lower Upper
 154 100
 153 111.0 89.2 133.8
 152 51.3 40.9 61.3



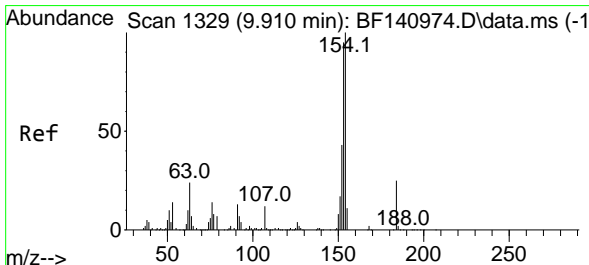
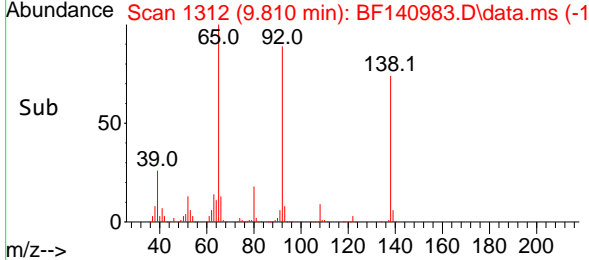
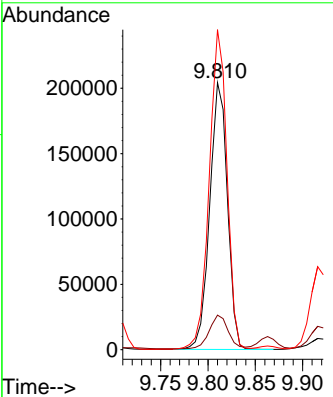
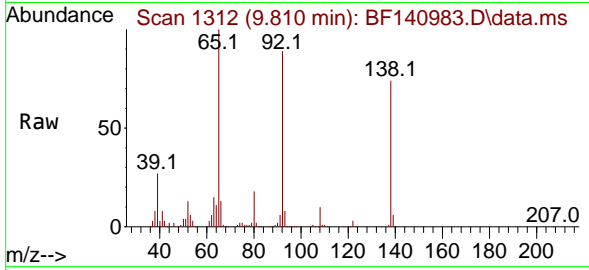


#53
 3-Nitroaniline
 Concen: 31.691 ng
 RT: 9.810 min Scan# 111
 Delta R.T. 0.000 min
 Lab File: BF140983.D
 Acq: 27 Dec 2024 09:11

Instrument : BNA_F
 ClientSampleId : PB165785BS

Tgt Ion:138 Resp: 265656

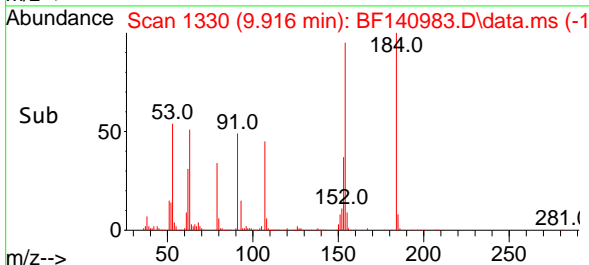
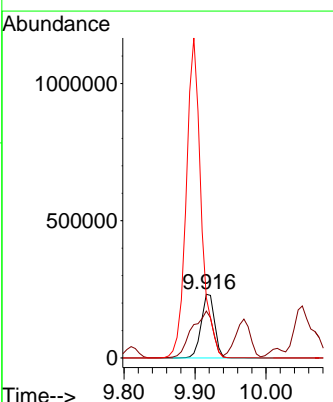
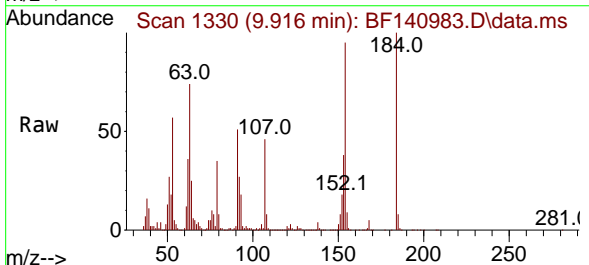
Ion	Ratio	Lower	Upper
138	100		
108	13.0	13.5	20.3#
92	119.9	97.7	146.5

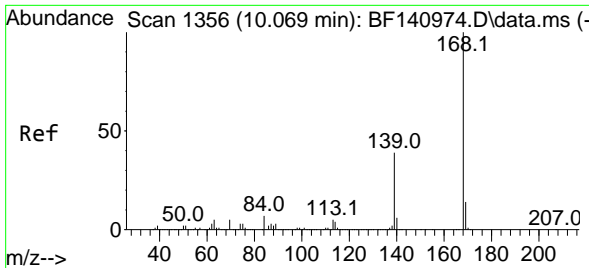


#54
 2,4-Dinitrophenol
 Concen: 90.306 ng
 RT: 9.916 min Scan# 1330
 Delta R.T. 0.006 min
 Lab File: BF140983.D
 Acq: 27 Dec 2024 09:11

Tgt Ion:184 Resp: 304969

Ion	Ratio	Lower	Upper
184	100		
63	73.7	81.6	122.4#
154	94.6	363.5	545.3#





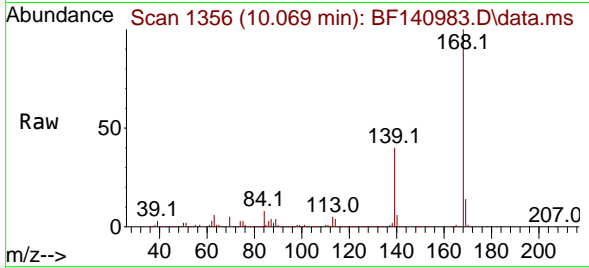
#55
 Dibenzofuran
 Concen: 45.697 ng
 RT: 10.069 min Scan# 11
 Delta R.T. 0.000 min
 Lab File: BF140983.D
 Acq: 27 Dec 2024 09:11

Instrument :

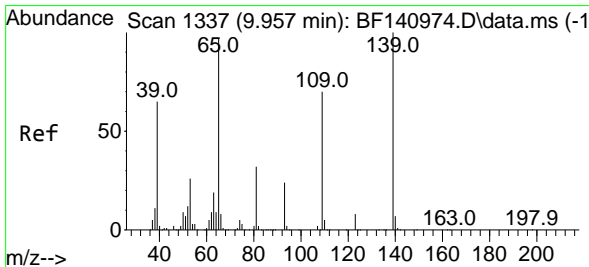
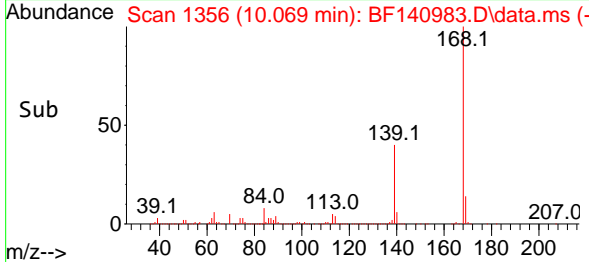
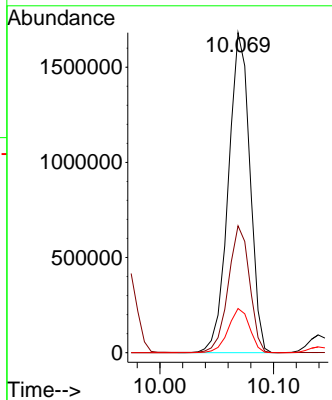
BNA_F

ClientSampleId :

PB165785BS

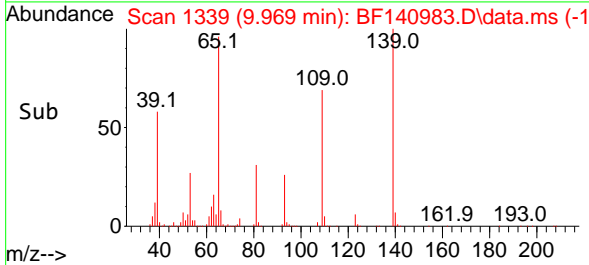
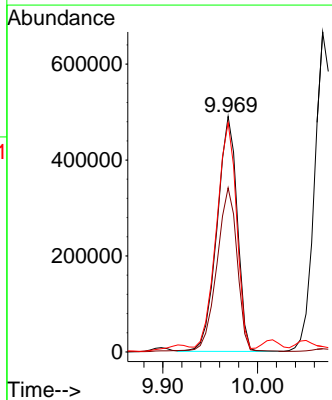
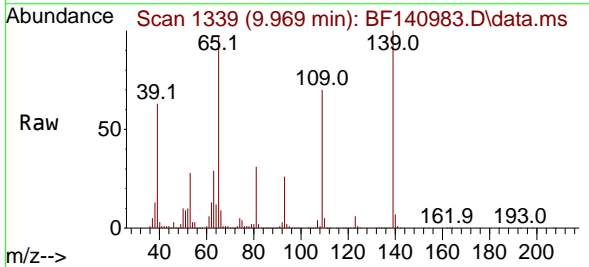


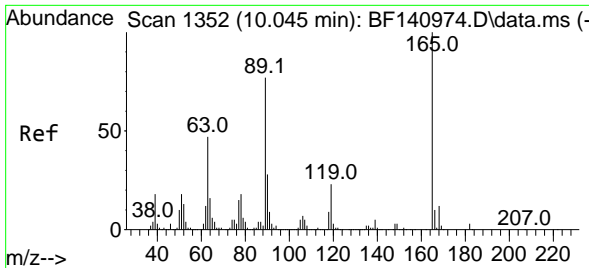
Tgt Ion:168 Resp: 2215928
 Ion Ratio Lower Upper
 168 100
 139 39.7 31.6 47.4
 169 13.8 11.0 16.6



#56
 4-Nitrophenol
 Concen: 108.065 ng
 RT: 9.969 min Scan# 1339
 Delta R.T. 0.012 min
 Lab File: BF140983.D
 Acq: 27 Dec 2024 09:11

Tgt Ion:139 Resp: 725953
 Ion Ratio Lower Upper
 139 100
 109 69.7 50.8 90.8
 65 97.4 78.5 118.5





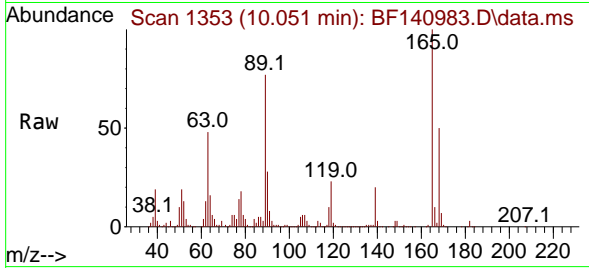
#57
 2,4-Dinitrotoluene
 Concen: 51.330 ng
 RT: 10.051 min Scan# 11
 Delta R.T. 0.006 min
 Lab File: BF140983.D
 Acq: 27 Dec 2024 09:11

Instrument :

BNA_F

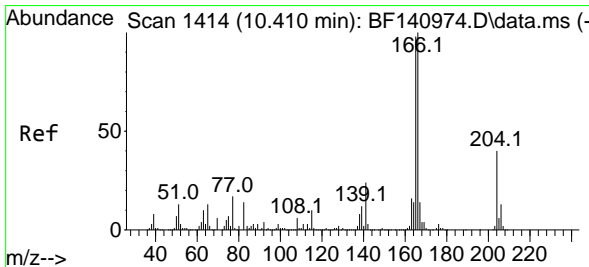
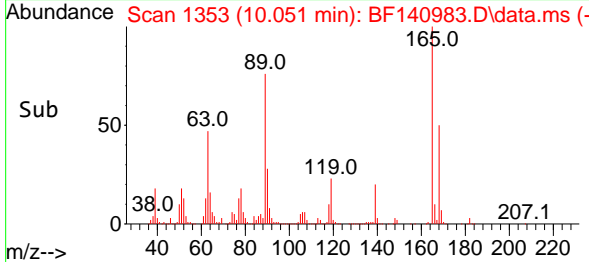
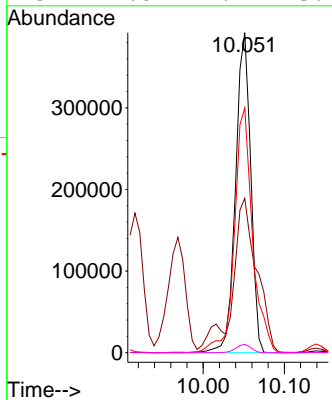
ClientSampleId :

PB165785BS



Tgt Ion:165 Resp: 506429

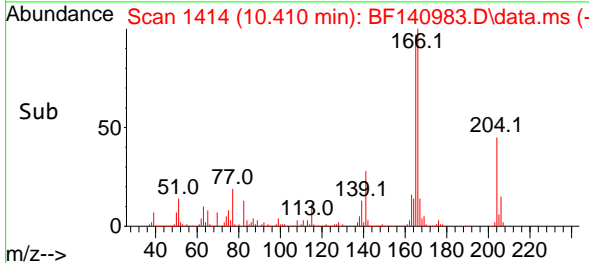
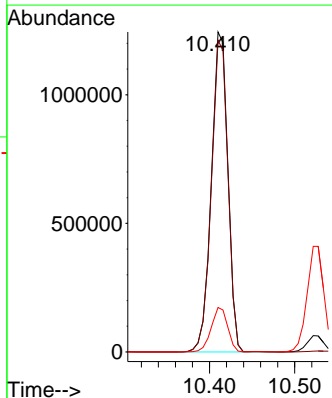
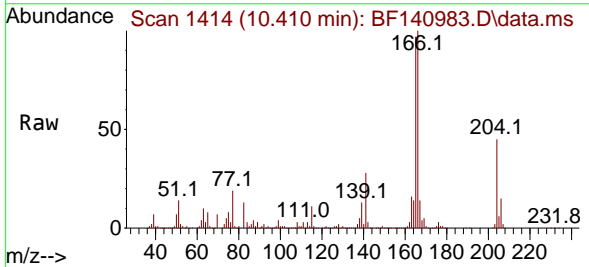
Ion	Ratio	Lower	Upper
165	100		
63	48.3	38.1	57.1
89	76.5	61.4	92.2
182	2.6	2.1	3.1

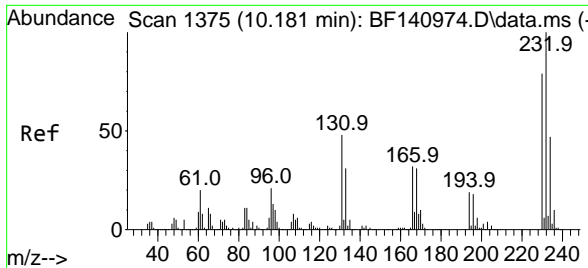


#58
 Fluorene
 Concen: 44.636 ng
 RT: 10.410 min Scan# 1414
 Delta R.T. 0.000 min
 Lab File: BF140983.D
 Acq: 27 Dec 2024 09:11

Tgt Ion:166 Resp: 1678446

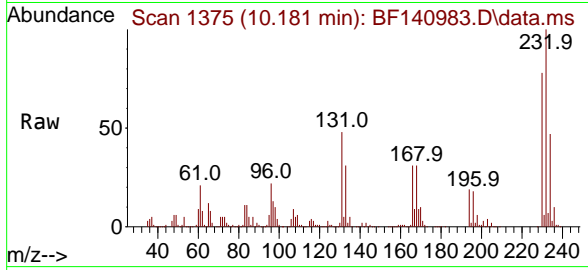
Ion	Ratio	Lower	Upper
166	100		
165	97.4	78.3	117.5
167	13.9	10.9	16.3





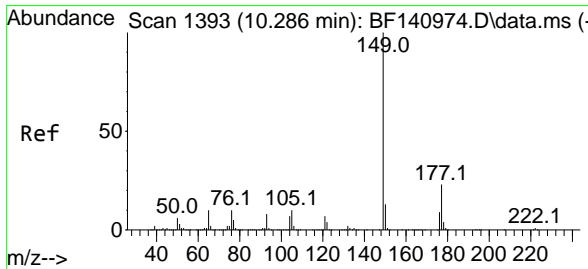
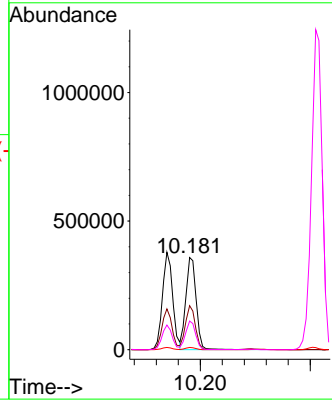
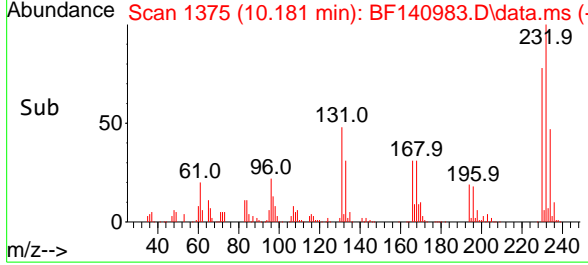
#59
 2,3,4,6-Tetrachlorophenol
 Concen: 50.293 ng
 RT: 10.181 min Scan# 11
 Delta R.T. 0.000 min
 Lab File: BF140983.D
 Acq: 27 Dec 2024 09:11

Instrument :
 BNA_F
 ClientSampleId :
 PB165785BS

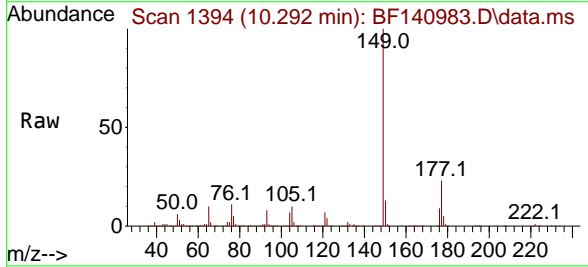


Tgt Ion:232 Resp: 465904

Ion	Ratio	Lower	Upper
232	100		
131	45.8	37.4	56.2
130	2.3	1.8	2.8
166	29.8	24.8	37.2

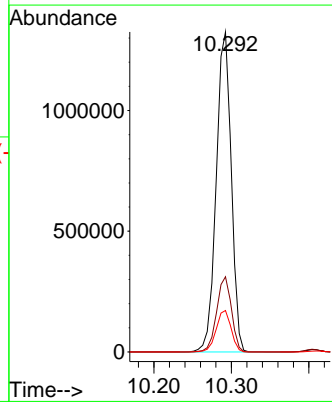
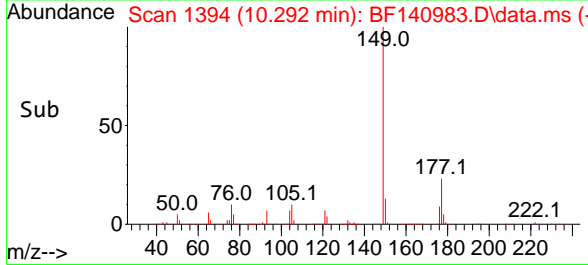


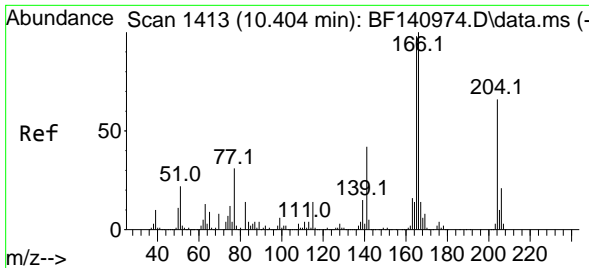
#60
 Diethylphthalate
 Concen: 45.878 ng
 RT: 10.292 min Scan# 1394
 Delta R.T. 0.006 min
 Lab File: BF140983.D
 Acq: 27 Dec 2024 09:11



Tgt Ion:149 Resp: 1778699

Ion	Ratio	Lower	Upper
149	100		
177	23.5	18.3	27.5
150	12.9	10.4	15.6

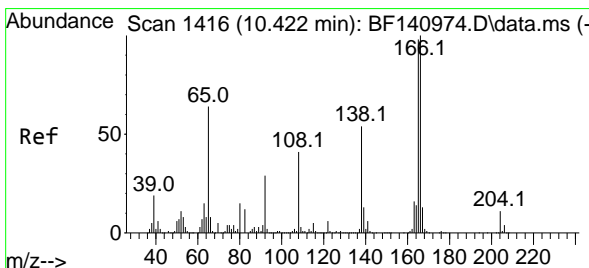
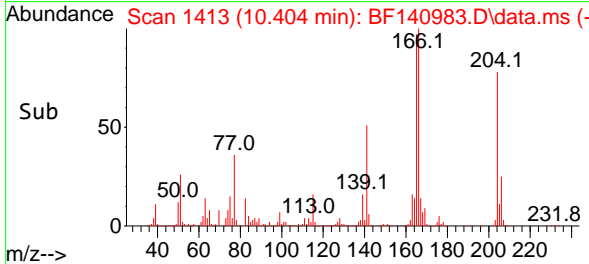
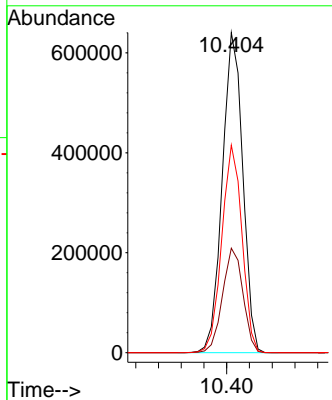
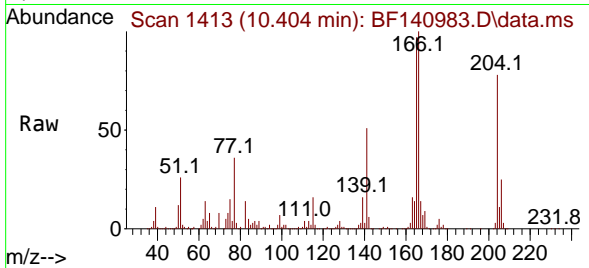




#61
 4-Chlorophenyl-phenylether
 Concen: 44.322 ng
 RT: 10.404 min Scan# 1413
 Delta R.T. 0.000 min
 Lab File: BF140983.D
 Acq: 27 Dec 2024 09:11

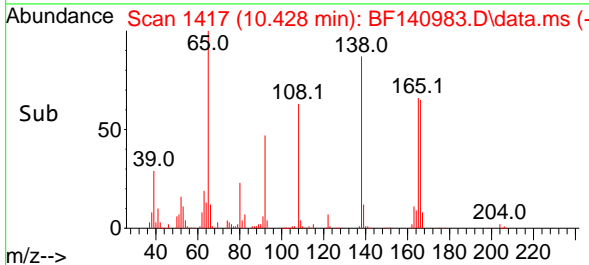
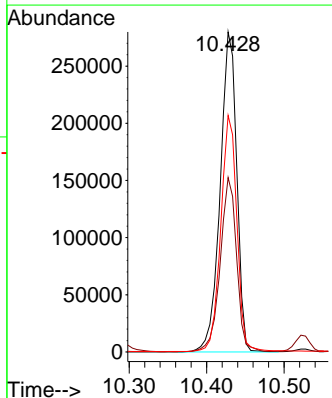
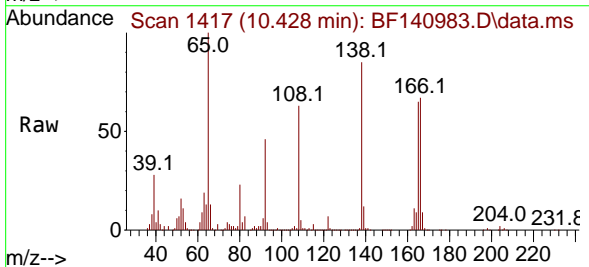
Instrument :
 BNA_F
 ClientSampleId :
 PB165785BS

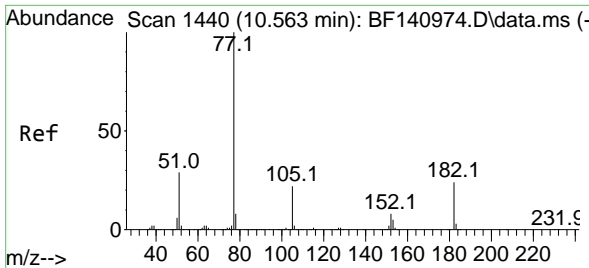
Tgt Ion	Resp	Lower	Upper
204	100		
206	32.7	25.8	38.6
141	64.8	51.2	76.8



#62
 4-Nitroaniline
 Concen: 47.753 ng
 RT: 10.428 min Scan# 1417
 Delta R.T. 0.006 min
 Lab File: BF140983.D
 Acq: 27 Dec 2024 09:11

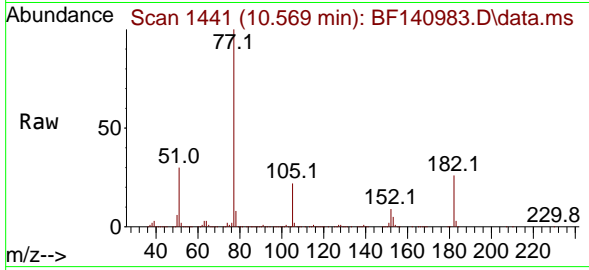
Tgt Ion	Resp	Lower	Upper
138	100		
92	54.5	34.8	74.8
108	73.9	55.9	95.9





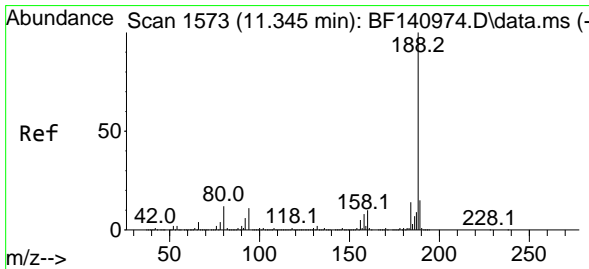
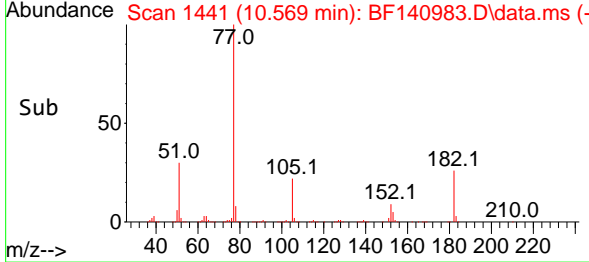
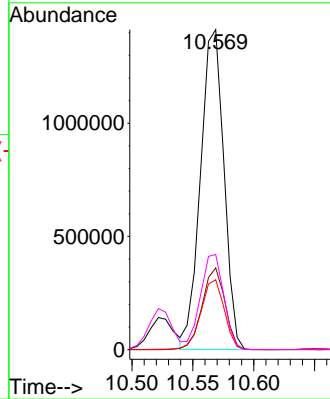
#63
 Azobenzene
 Concen: 46.254 ng
 RT: 10.569 min Scan# 14
 Delta R.T. 0.006 min
 Lab File: BF140983.D
 Acq: 27 Dec 2024 09:11

Instrument :
 BNA_F
 ClientSampleId :
 PB165785BS



Tgt Ion: 77 Resp: 1882254

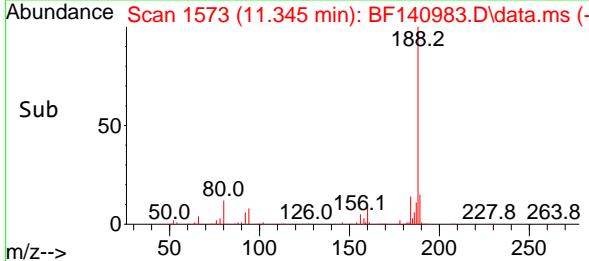
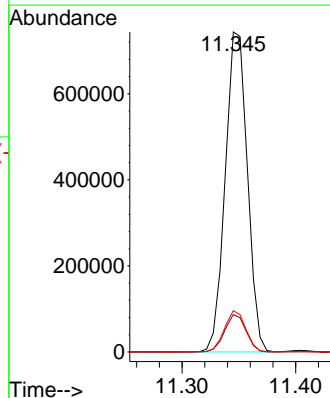
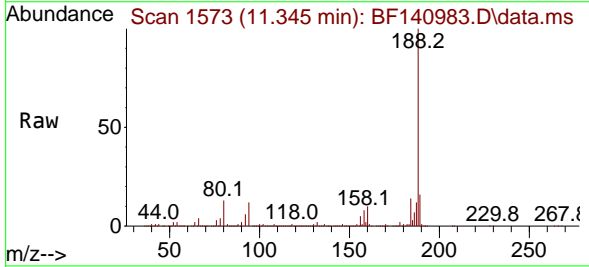
Ion	Ratio	Lower	Upper
77	100		
182	25.6	4.1	44.1
105	21.9	1.8	41.8
51	29.7	9.7	49.7

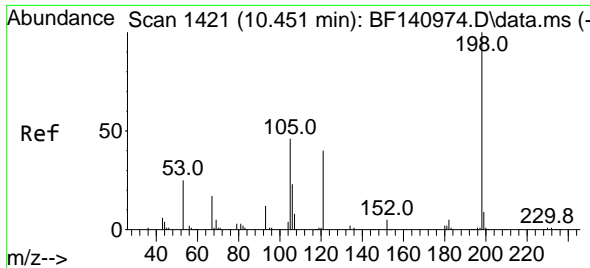


#64
 Phenanthrene-d10
 Concen: 20.000 ng
 RT: 11.345 min Scan# 1573
 Delta R.T. 0.000 min
 Lab File: BF140983.D
 Acq: 27 Dec 2024 09:11

Tgt Ion: 188 Resp: 1008689

Ion	Ratio	Lower	Upper
188	100		
94	11.7	9.0	13.6
80	12.9	9.8	14.6



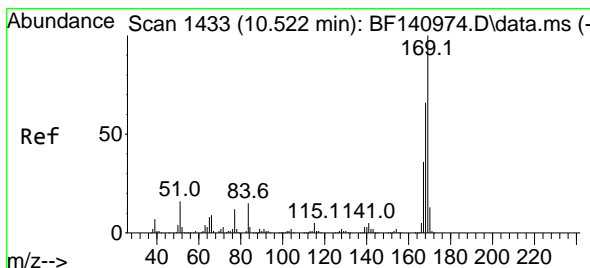
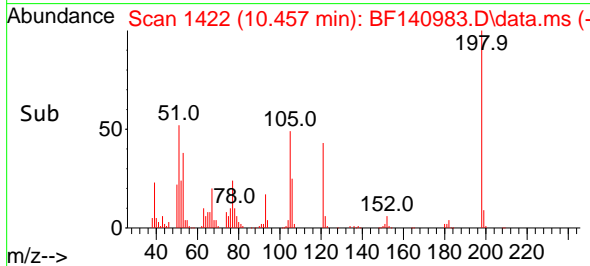
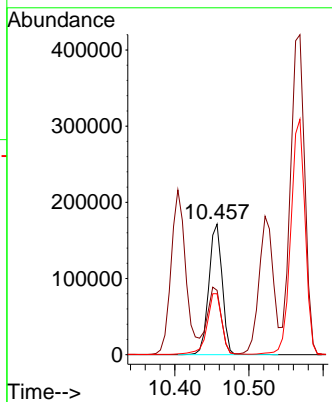
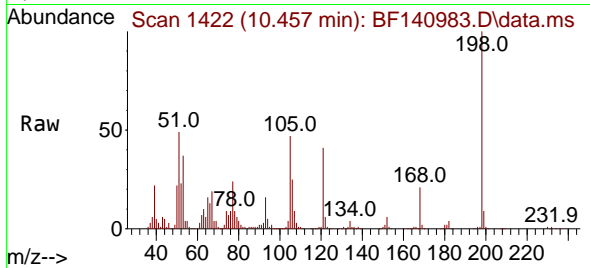


#65
 4,6-Dinitro-2-methylphenol
 Concen: 52.241 ng
 RT: 10.457 min Scan# 1421
 Delta R.T. 0.006 min
 Lab File: BF140983.D
 Acq: 27 Dec 2024 09:11

Instrument : BNA_F
 ClientSampleId : PB165785BS

Tgt Ion:198 Resp: 214224

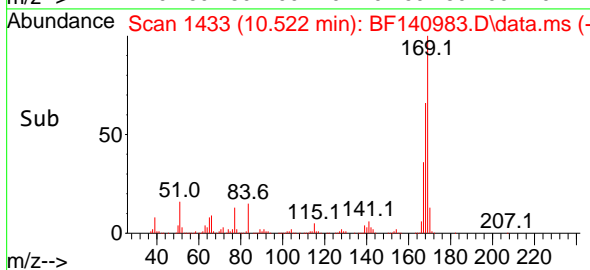
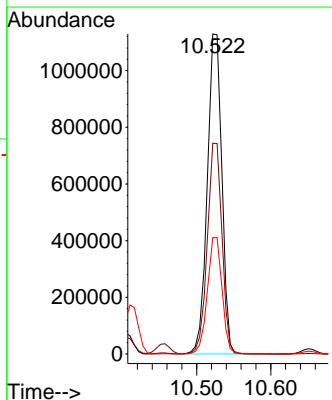
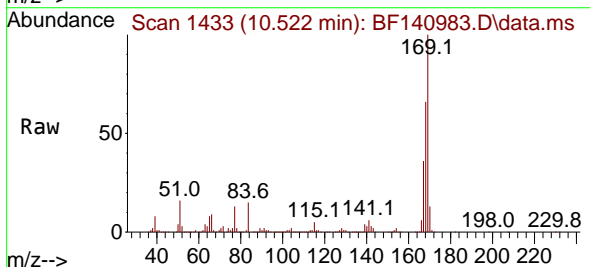
Ion	Ratio	Lower	Upper
198	100		
51	49.2	32.3	72.3
105	46.7	28.4	68.4

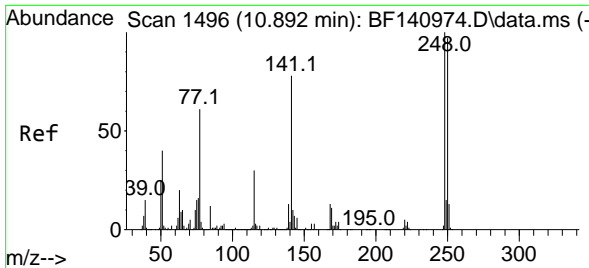


#66
 n-Nitrosodiphenylamine
 Concen: 48.448 ng
 RT: 10.522 min Scan# 1433
 Delta R.T. 0.000 min
 Lab File: BF140983.D
 Acq: 27 Dec 2024 09:11

Tgt Ion:169 Resp: 1538861

Ion	Ratio	Lower	Upper
169	100		
168	65.8	52.6	79.0
167	36.4	29.0	43.4

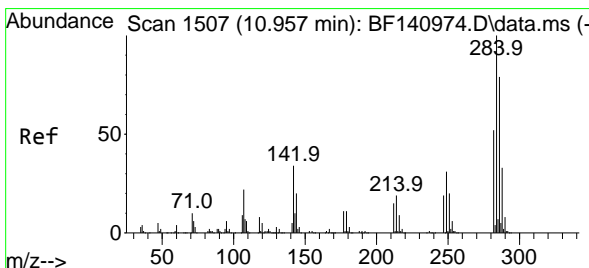
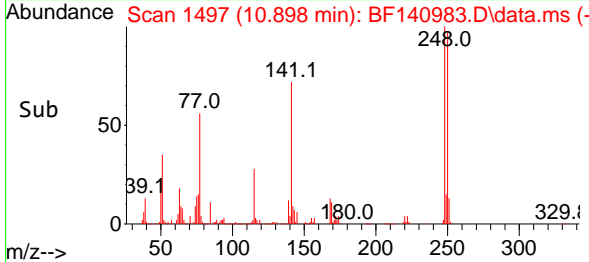
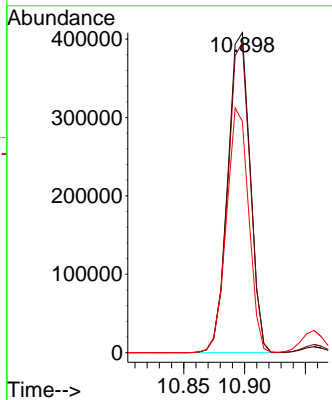
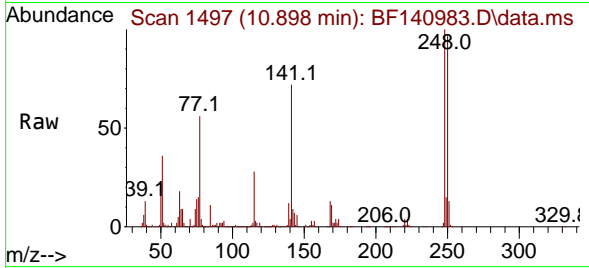




#67
 4-Bromophenyl-phenylether
 Concen: 47.996 ng
 RT: 10.898 min Scan# 1497
 Delta R.T. 0.006 min
 Lab File: BF140983.D
 Acq: 27 Dec 2024 09:11

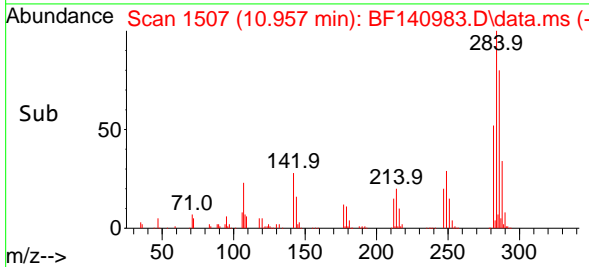
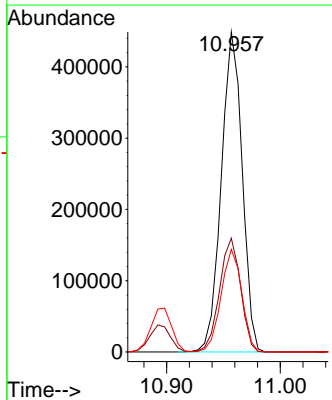
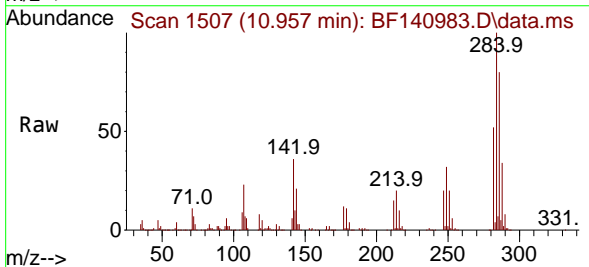
Instrument :
 BNA_F
 ClientSampleId :
 PB165785BS

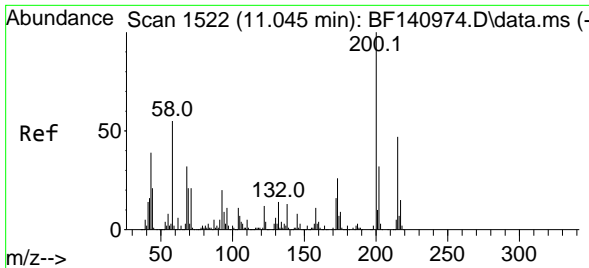
Tgt Ion:248 Resp: 523358
 Ion Ratio Lower Upper
 248 100
 250 96.8 77.7 116.5
 141 72.3 62.1 93.1



#68
 Hexachlorobenzene
 Concen: 47.794 ng
 RT: 10.957 min Scan# 1507
 Delta R.T. 0.000 min
 Lab File: BF140983.D
 Acq: 27 Dec 2024 09:11

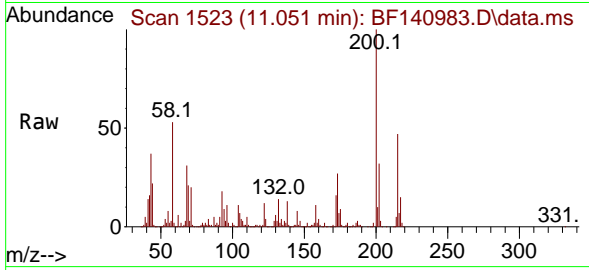
Tgt Ion:284 Resp: 574649
 Ion Ratio Lower Upper
 284 100
 142 35.5 27.1 40.7
 249 32.0 25.1 37.7



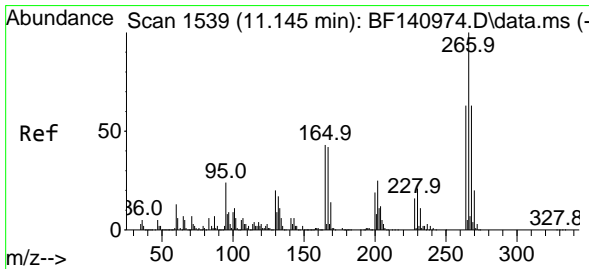
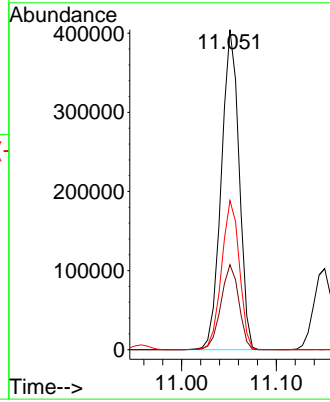
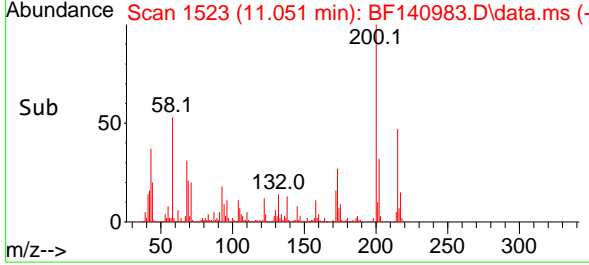


#69
 Atrazine
 Concen: 59.532 ng
 RT: 11.051 min Scan# 11
 Delta R.T. 0.006 min
 Lab File: BF140983.D
 Acq: 27 Dec 2024 09:11

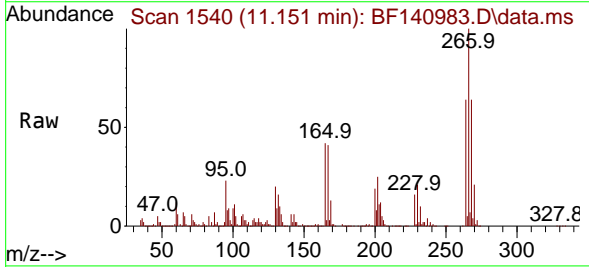
Instrument :
 BNA_F
 ClientSampleId :
 PB165785BS



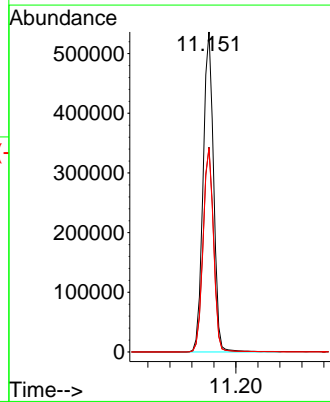
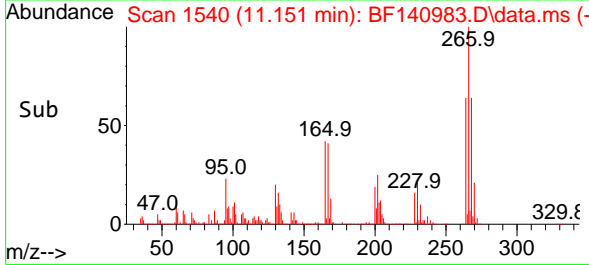
Tgt Ion:200 Resp: 528271
 Ion Ratio Lower Upper
 200 100
 173 26.5 6.4 46.4
 215 46.6 27.2 67.2

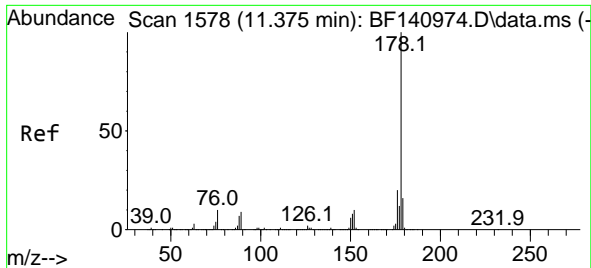


#70
 Pentachlorophenol
 Concen: 95.026 ng
 RT: 11.151 min Scan# 1540
 Delta R.T. 0.006 min
 Lab File: BF140983.D
 Acq: 27 Dec 2024 09:11



Tgt Ion:266 Resp: 711356
 Ion Ratio Lower Upper
 266 100
 268 64.0 50.5 75.7
 264 63.7 50.2 75.4





#71
 Phenanthrene
 Concen: 48.429 ng
 RT: 11.375 min Scan# 11
 Delta R.T. 0.000 min
 Lab File: BF140983.D
 Acq: 27 Dec 2024 09:11

Instrument :

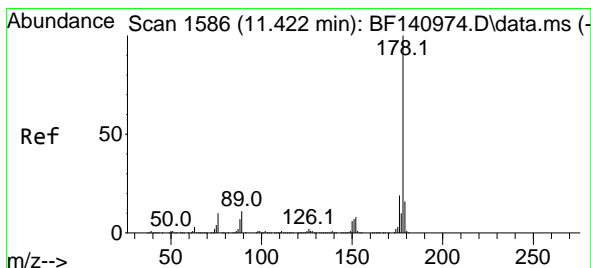
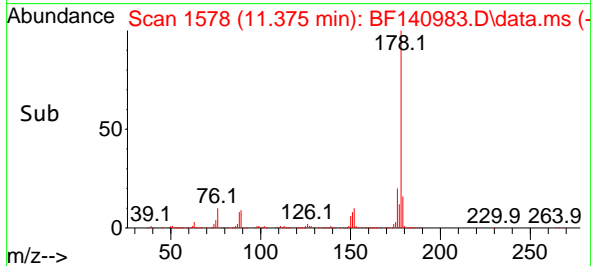
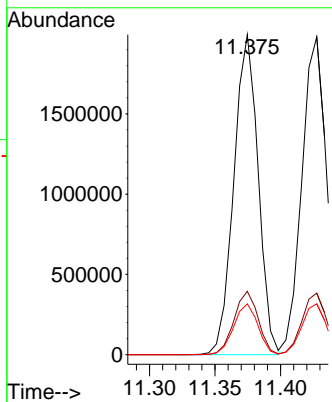
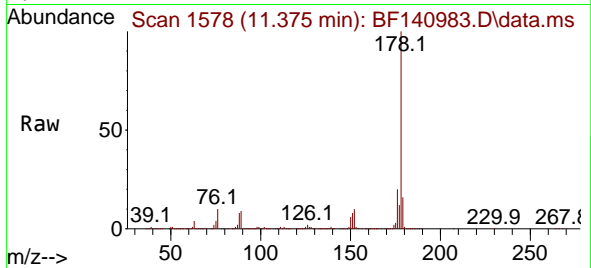
BNA_F

ClientSampleId :

PB165785BS

Tgt Ion:178 Resp: 2570987

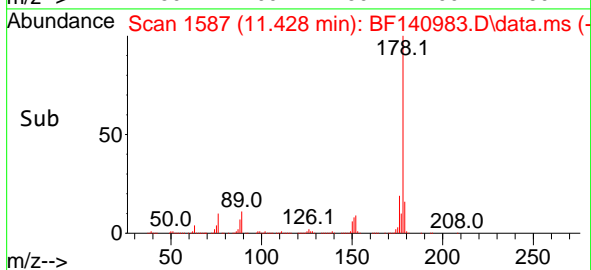
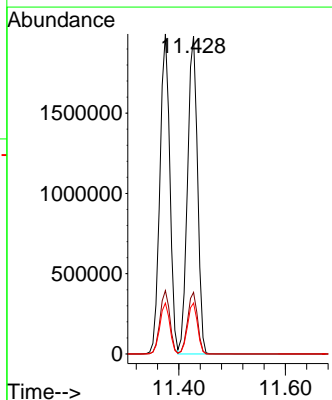
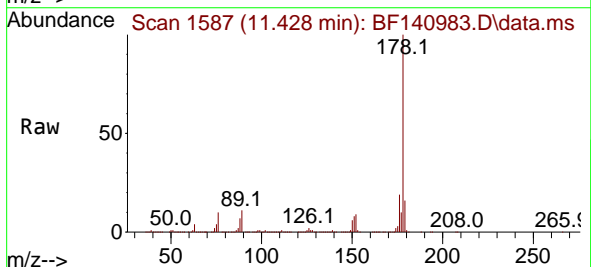
Ion	Ratio	Lower	Upper
178	100		
176	19.8	15.8	23.6
179	15.9	12.6	19.0

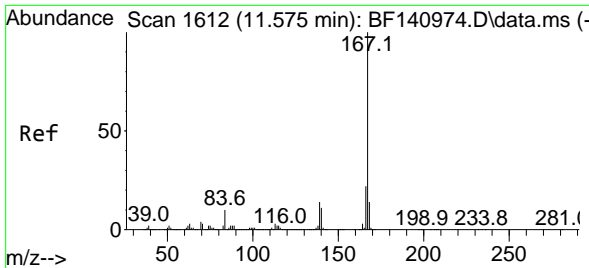


#72
 Anthracene
 Concen: 49.495 ng
 RT: 11.428 min Scan# 1587
 Delta R.T. 0.006 min
 Lab File: BF140983.D
 Acq: 27 Dec 2024 09:11

Tgt Ion:178 Resp: 2574703

Ion	Ratio	Lower	Upper
178	100		
176	19.4	15.3	22.9
179	16.0	12.9	19.3



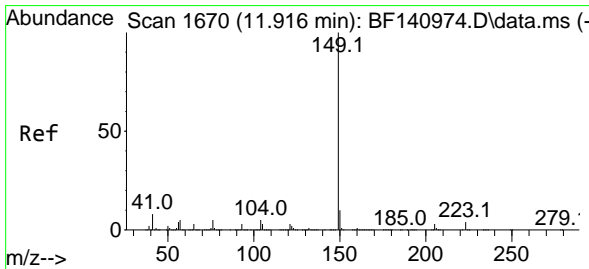
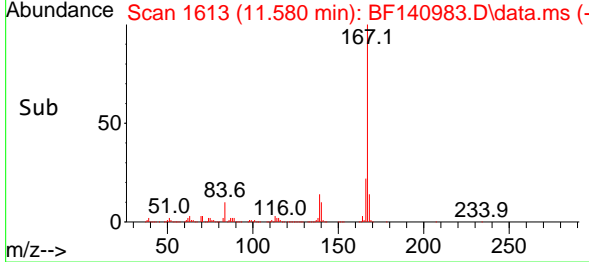
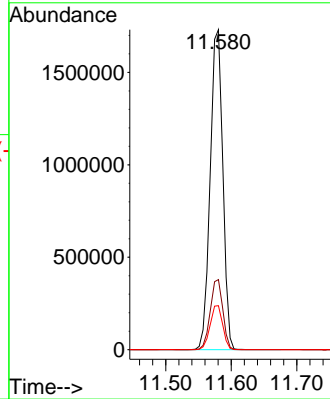
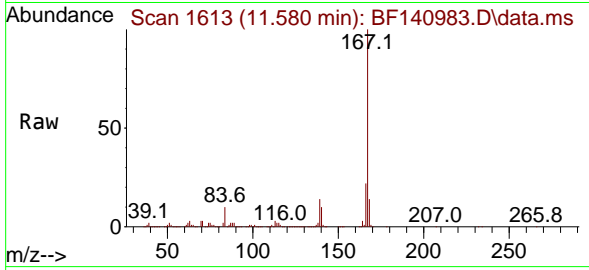


#73
 Carbazole
 Concen: 46.404 ng
 RT: 11.580 min Scan# 1613
 Delta R.T. 0.006 min
 Lab File: BF140983.D
 Acq: 27 Dec 2024 09:11

Instrument : BNA_F
 ClientSampleId : PB165785BS

Tgt Ion:167 Resp: 2320550

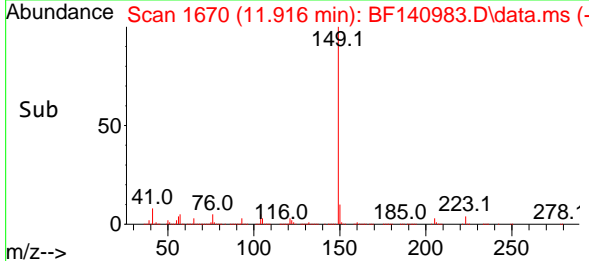
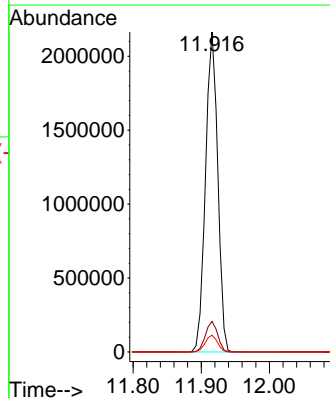
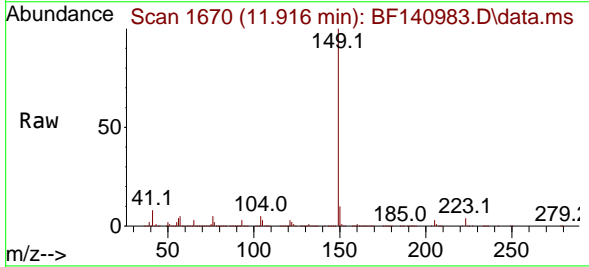
Ion	Ratio	Lower	Upper
167	100		
166	21.9	17.5	26.3
139	13.8	11.0	16.4

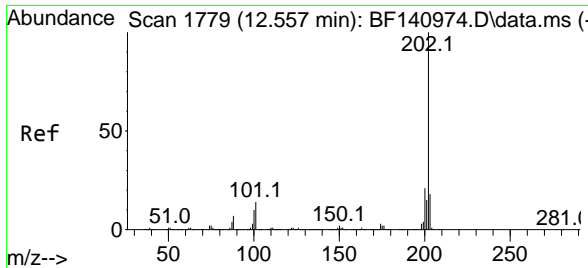


#74
 Di-n-butylphthalate
 Concen: 47.398 ng
 RT: 11.916 min Scan# 1670
 Delta R.T. 0.000 min
 Lab File: BF140983.D
 Acq: 27 Dec 2024 09:11

Tgt Ion:149 Resp: 2695936

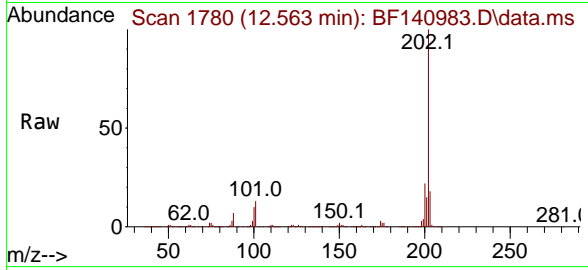
Ion	Ratio	Lower	Upper
149	100		
150	9.5	7.7	11.5
104	5.3	4.1	6.1





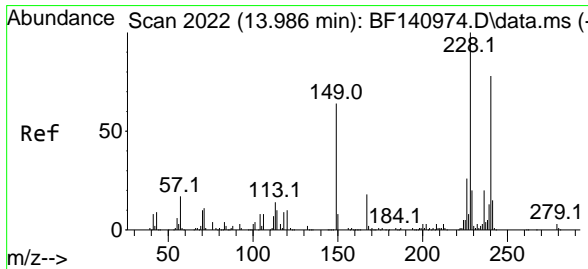
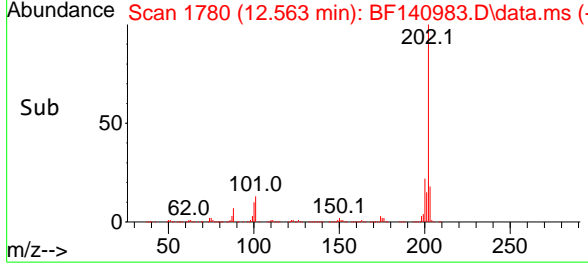
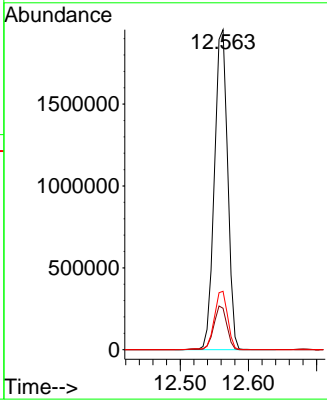
#75
 Fluoranthene
 Concen: 45.875 ng
 RT: 12.563 min Scan# 11
 Delta R.T. 0.006 min
 Lab File: BF140983.D
 Acq: 27 Dec 2024 09:11

Instrument : BNA_F
 ClientSampleId : PB165785BS

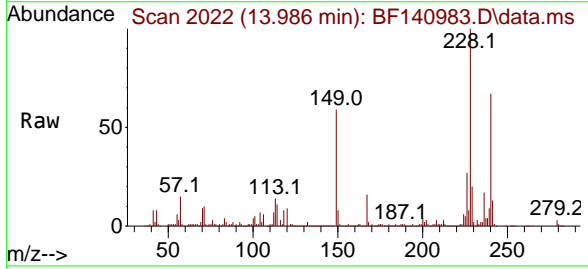


Tgt Ion:202 Resp: 2641352

Ion	Ratio	Lower	Upper
202	100		
101	13.0	0.0	33.7
203	18.3	0.0	38.1

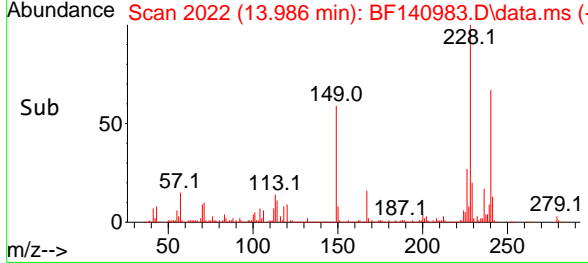
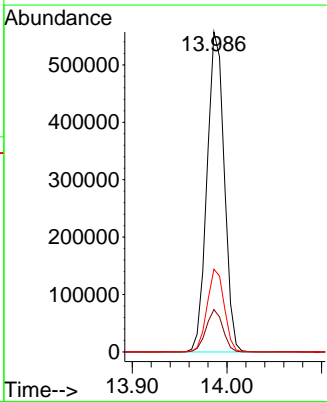


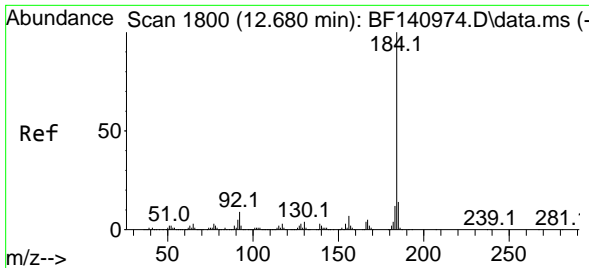
#76
 Chrysene-d12
 Concen: 20.000 ng
 RT: 13.986 min Scan# 2022
 Delta R.T. 0.000 min
 Lab File: BF140983.D
 Acq: 27 Dec 2024 09:11



Tgt Ion:240 Resp: 702609

Ion	Ratio	Lower	Upper
240	100		
120	13.3	10.7	16.1
236	25.8	20.6	31.0



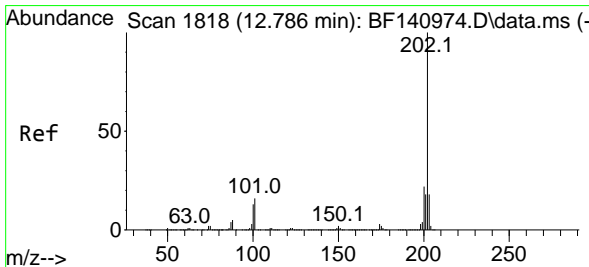
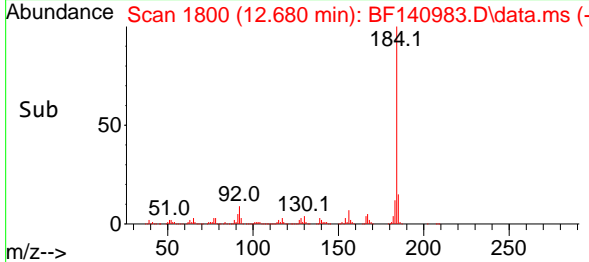
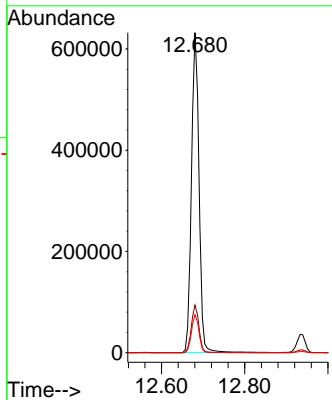
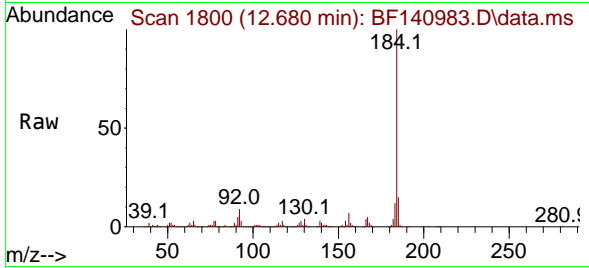


#77
 Benzidine
 Concen: 53.848 ng
 RT: 12.680 min Scan# 1800
 Delta R.T. 0.000 min
 Lab File: BF140983.D
 Acq: 27 Dec 2024 09:11

Instrument : BNA_F
 ClientSampleId : PB165785BS

Tgt Ion:184 Resp: 799588

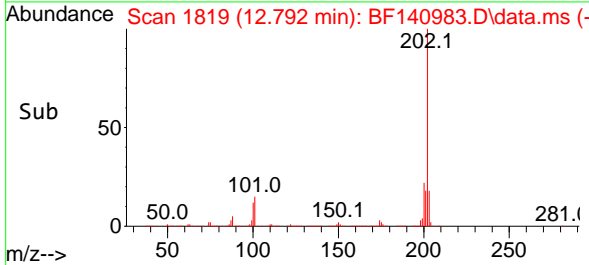
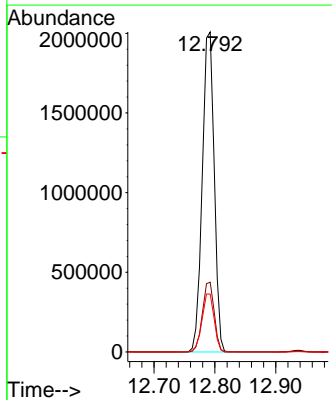
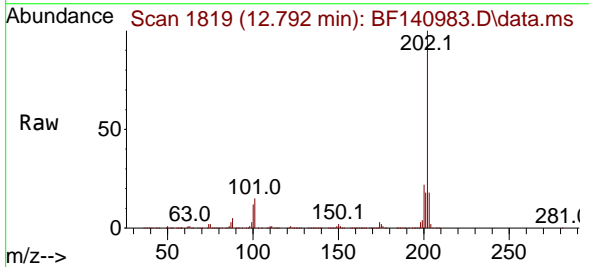
Ion	Ratio	Lower	Upper
184	100		
185	14.9	11.4	17.2
183	11.8	9.4	14.0

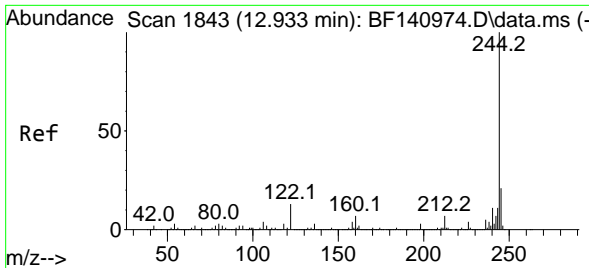


#78
 Pyrene
 Concen: 44.649 ng
 RT: 12.792 min Scan# 1819
 Delta R.T. 0.006 min
 Lab File: BF140983.D
 Acq: 27 Dec 2024 09:11

Tgt Ion:202 Resp: 2743608

Ion	Ratio	Lower	Upper
202	100		
200	21.8	17.3	25.9
203	18.1	14.6	21.8



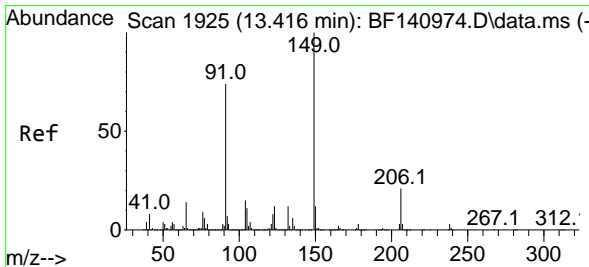
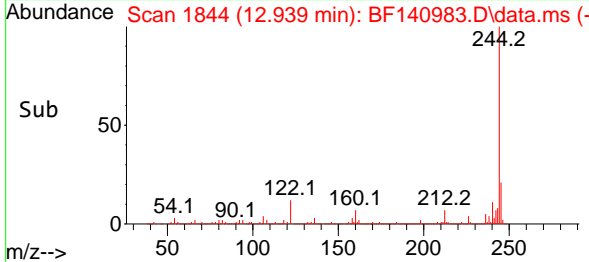
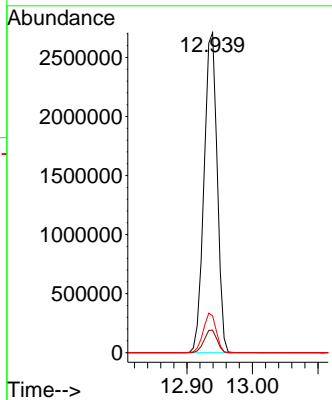
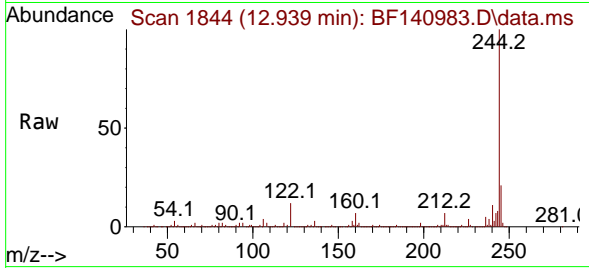


#79
 Terphenyl-d14
 Concen: 89.332 ng
 RT: 12.939 min Scan# 1844
 Delta R.T. 0.006 min
 Lab File: BF140983.D
 Acq: 27 Dec 2024 09:11

Instrument : BNA_F
 ClientSampleId : PB165785BS

Tgt Ion:244 Resp: 3778801

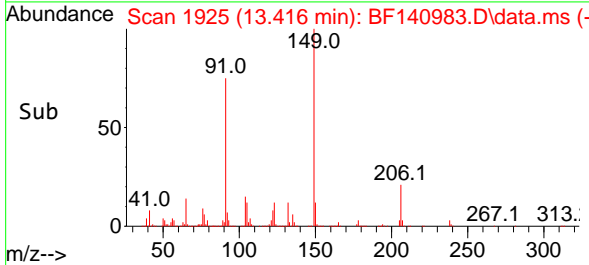
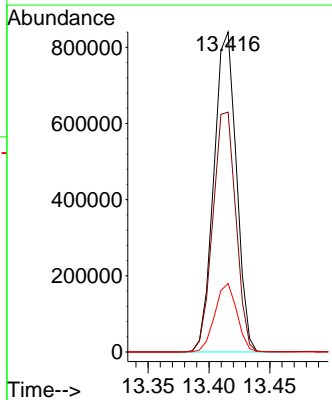
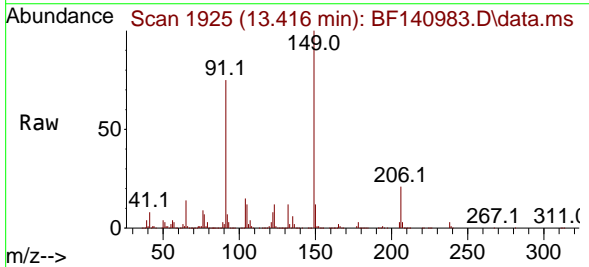
Ion	Ratio	Lower	Upper
244	100		
212	7.1	5.7	8.5
122	11.5	10.2	15.2

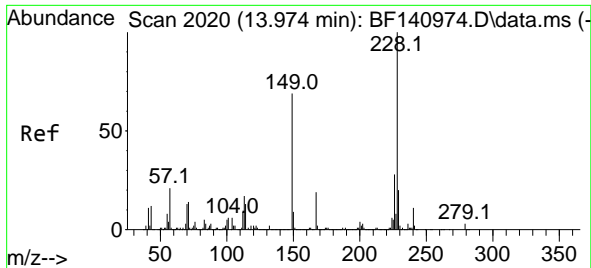


#80
 Butylbenzylphthalate
 Concen: 48.279 ng
 RT: 13.416 min Scan# 1925
 Delta R.T. 0.000 min
 Lab File: BF140983.D
 Acq: 27 Dec 2024 09:11

Tgt Ion:149 Resp: 1083298

Ion	Ratio	Lower	Upper
149	100		
91	75.0	59.5	89.3
206	21.4	17.1	25.7

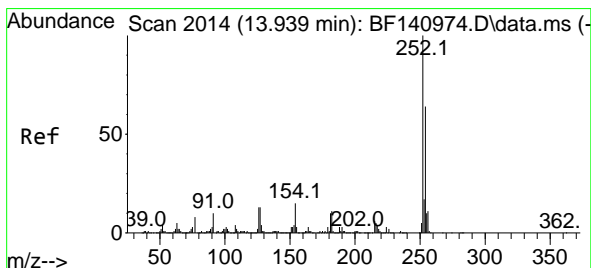
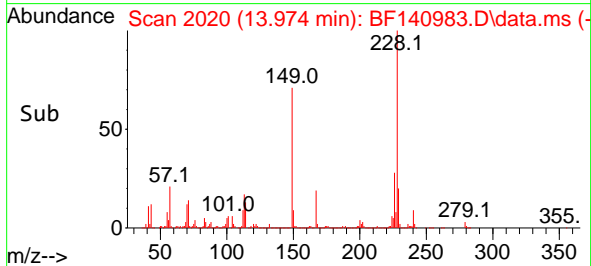
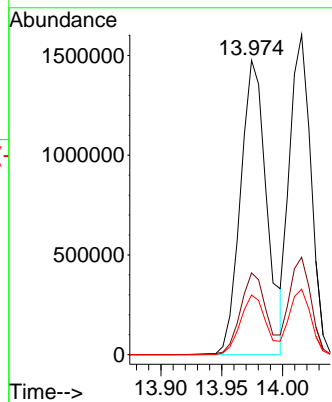
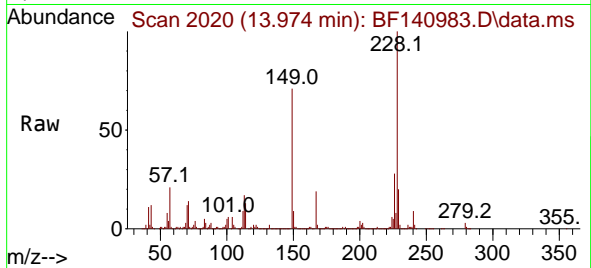




#81
 Benzo(a)anthracene
 Concen: 45.187 ng
 RT: 13.974 min Scan# 20
 Delta R.T. 0.000 min
 Lab File: BF140983.D
 Acq: 27 Dec 2024 09:11

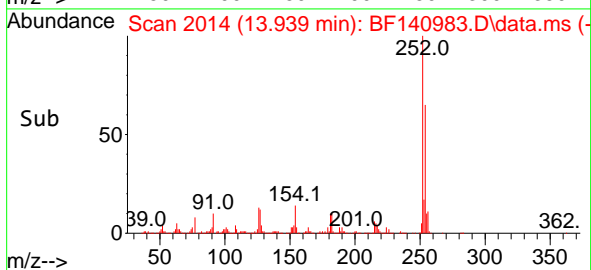
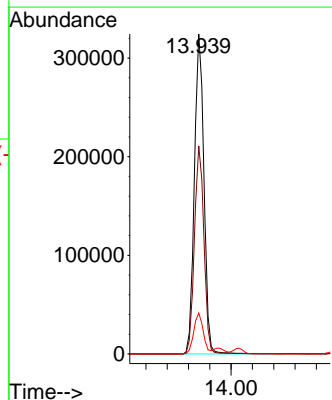
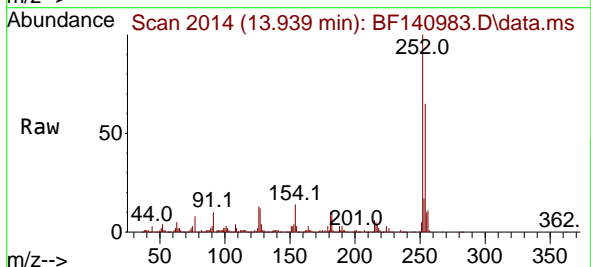
Instrument :
 BNA_F
 ClientSampleId :
 PB165785BS

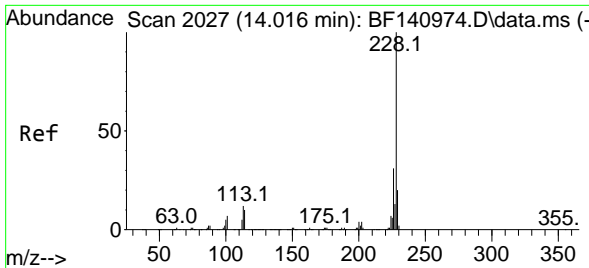
Tgt Ion:228 Resp: 2212692
 Ion Ratio Lower Upper
 228 100
 226 27.8 22.1 33.1
 229 20.3 16.2 24.2



#82
 3,3'-Dichlorobenzidine
 Concen: 27.560 ng
 RT: 13.939 min Scan# 2014
 Delta R.T. 0.000 min
 Lab File: BF140983.D
 Acq: 27 Dec 2024 09:11

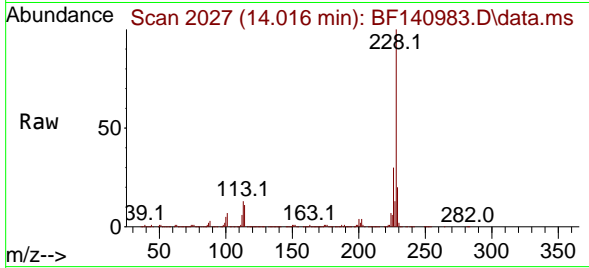
Tgt Ion:252 Resp: 405461
 Ion Ratio Lower Upper
 252 100
 254 65.0 51.5 77.3
 126 12.8 10.3 15.5



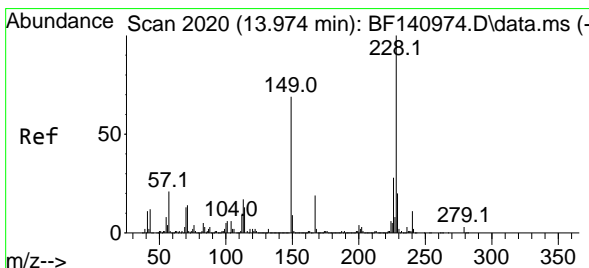
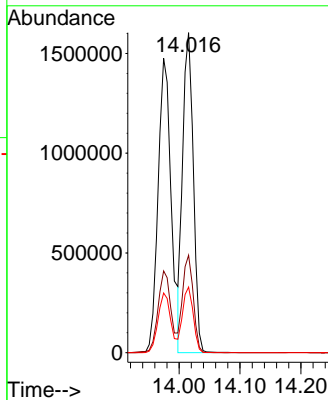
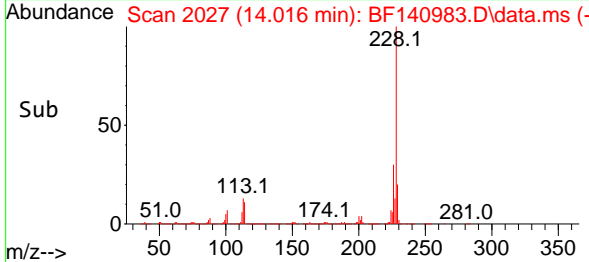


#83
 Chrysene
 Concen: 44.197 ng
 RT: 14.016 min Scan# 2027
 Delta R.T. 0.000 min
 Lab File: BF140983.D
 Acq: 27 Dec 2024 09:11

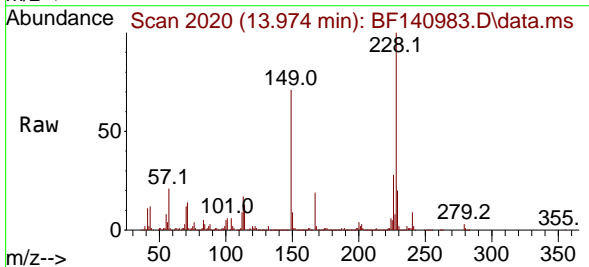
Instrument : BNA_F
 Client Sample Id : PB165785BS



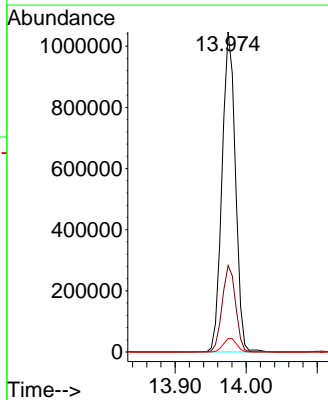
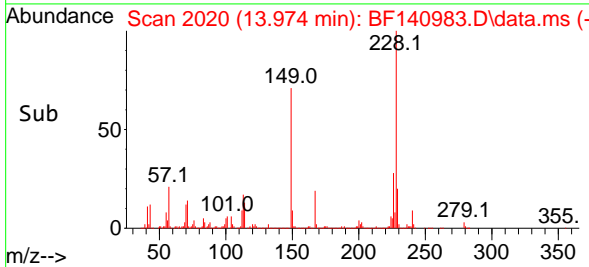
Tgt Ion: 228 Resp: 1950985
 Ion Ratio Lower Upper
 228 100
 226 30.5 24.5 36.7
 229 20.5 16.2 24.4

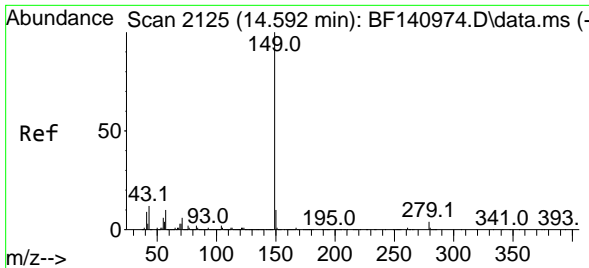


#84
 Bis(2-ethylhexyl)phthalate
 Concen: 46.873 ng
 RT: 13.974 min Scan# 2020
 Delta R.T. 0.000 min
 Lab File: BF140983.D
 Acq: 27 Dec 2024 09:11



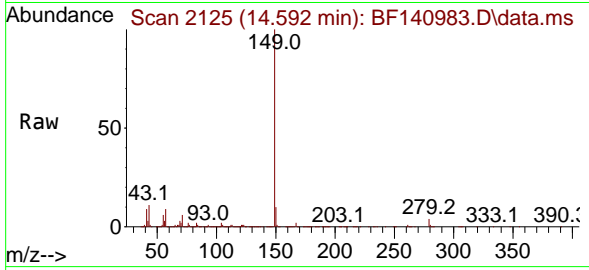
Tgt Ion: 149 Resp: 1364261
 Ion Ratio Lower Upper
 149 100
 167 27.0 21.6 32.4
 279 4.2 3.2 4.8



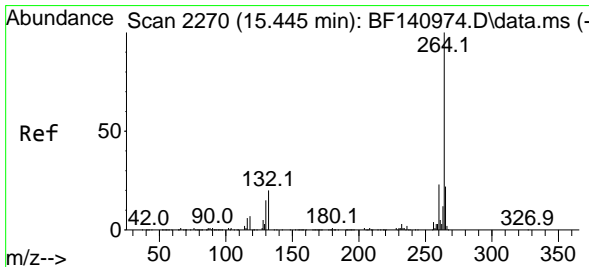
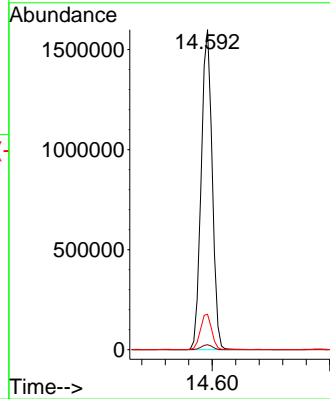
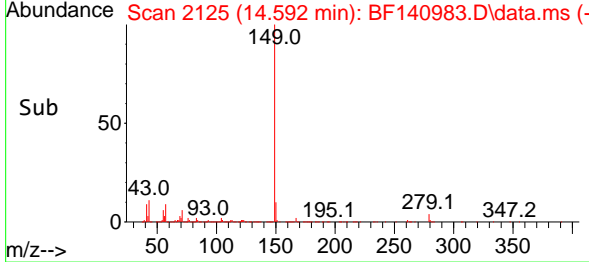


#85
 Di-n-octyl phthalate
 Concen: 49.097 ng
 RT: 14.592 min Scan# 2125
 Delta R.T. 0.000 min
 Lab File: BF140983.D
 Acq: 27 Dec 2024 09:11

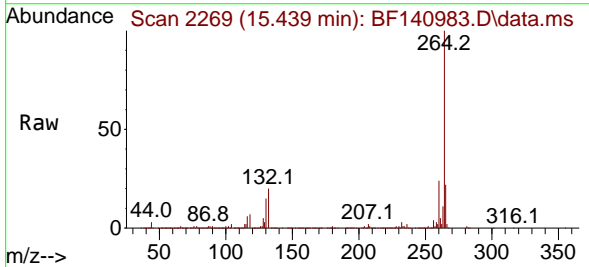
Instrument :
 BNA_F
 ClientSampleId :
 PB165785BS



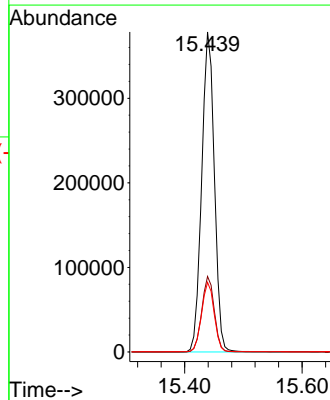
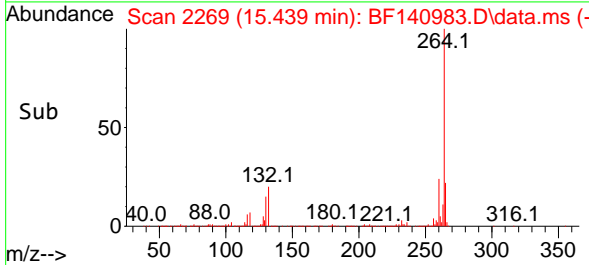
Tgt Ion:149 Resp: 2068227
 Ion Ratio Lower Upper
 149 100
 167 1.6 1.2 1.8
 43 11.3 9.3 13.9

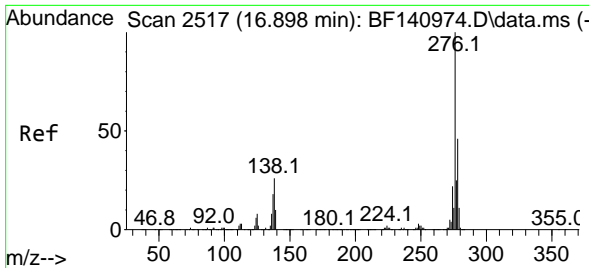


#86
 Perylene-d12
 Concen: 20.000 ng
 RT: 15.439 min Scan# 2269
 Delta R.T. -0.006 min
 Lab File: BF140983.D
 Acq: 27 Dec 2024 09:11



Tgt Ion:264 Resp: 567599
 Ion Ratio Lower Upper
 264 100
 260 23.6 18.7 28.1
 265 21.8 17.4 26.2



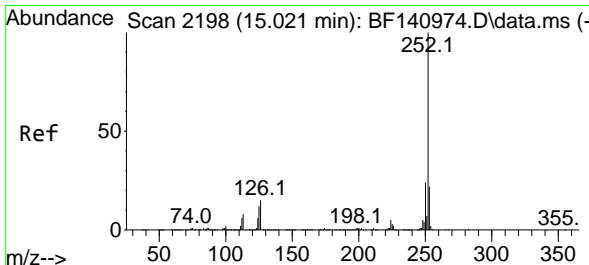
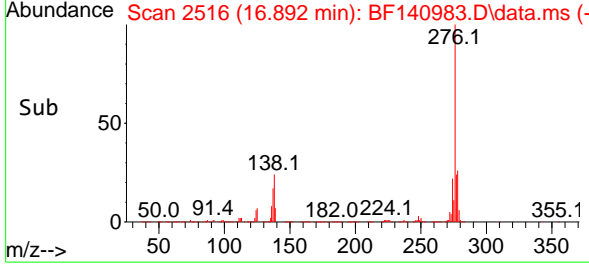
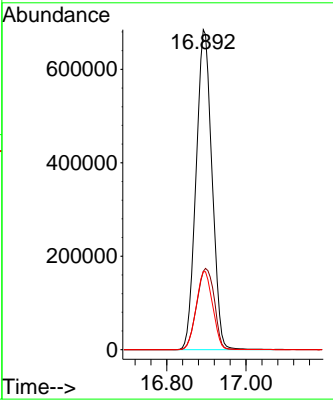
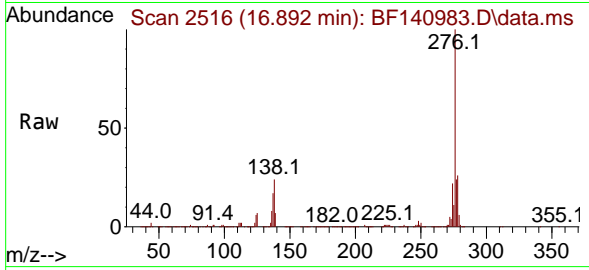


#87
 Indeno(1,2,3-cd)pyrene
 Concen: 53.368 ng
 RT: 16.892 min Scan# 2198
 Delta R.T. -0.006 min
 Lab File: BF140983.D
 Acq: 27 Dec 2024 09:11

Instrument : BNA_F
 Client Sample Id : PB165785BS

Tgt Ion: 276 Resp: 1908430

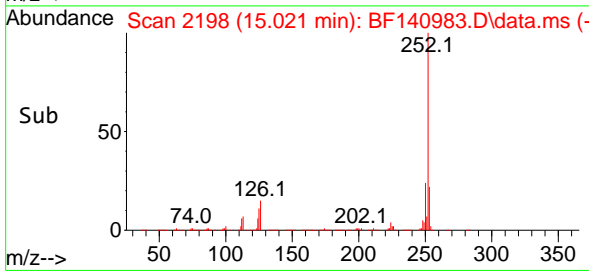
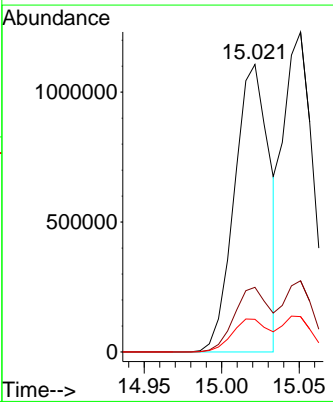
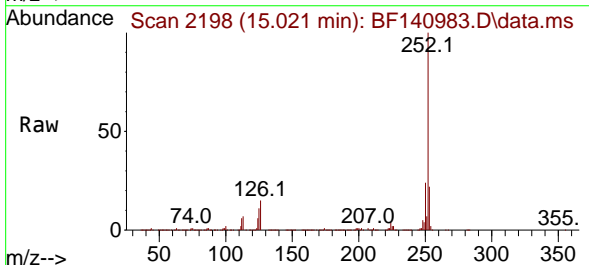
Ion	Ratio	Lower	Upper
276	100		
138	28.2	23.1	34.7
277	25.2	20.4	30.6

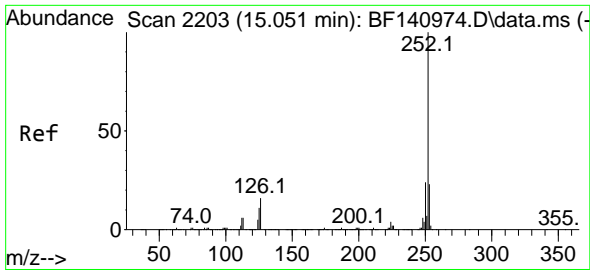


#88
 Benzo(b)fluoranthene
 Concen: 43.991 ng
 RT: 15.021 min Scan# 2198
 Delta R.T. 0.000 min
 Lab File: BF140983.D
 Acq: 27 Dec 2024 09:11

Tgt Ion: 252 Resp: 1741466

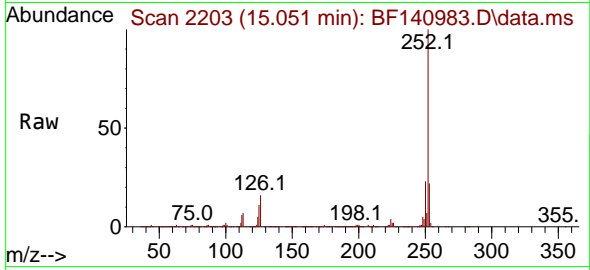
Ion	Ratio	Lower	Upper
252	100		
253	22.5	17.7	26.5
125	11.3	9.3	13.9



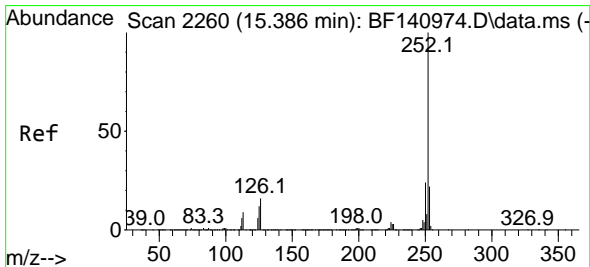
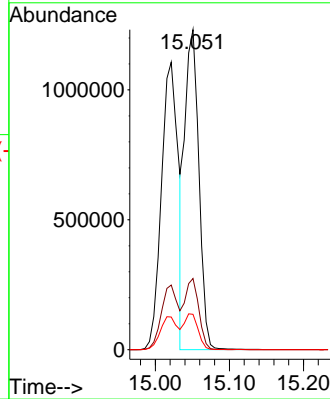
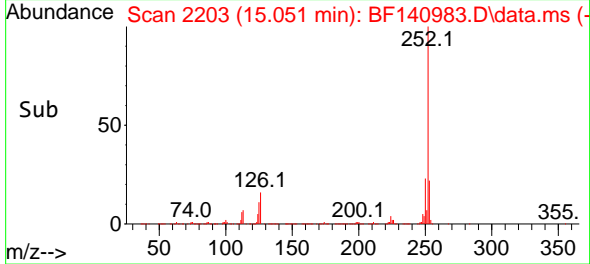


#89
 Benzo(k)fluoranthene
 Concen: 52.510 ng
 RT: 15.051 min Scan# 21
 Delta R.T. 0.000 min
 Lab File: BF140983.D
 Acq: 27 Dec 2024 09:11

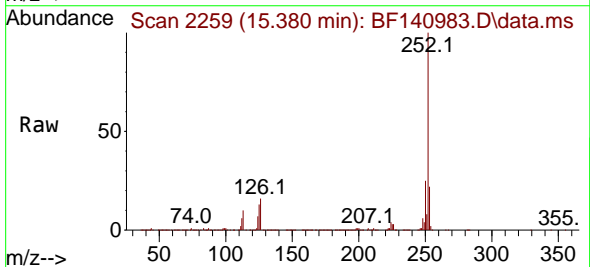
Instrument :
 BNA_F
 ClientSampleId :
 PB165785BS



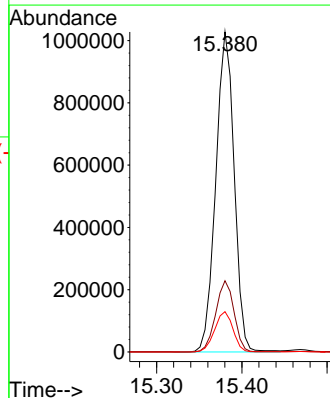
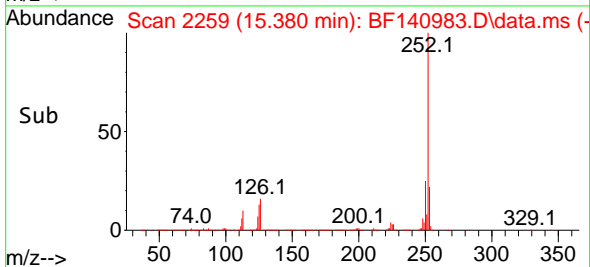
Tgt Ion:252 Resp: 1629204
 Ion Ratio Lower Upper
 252 100
 253 22.2 17.8 26.8
 125 11.1 9.4 14.0

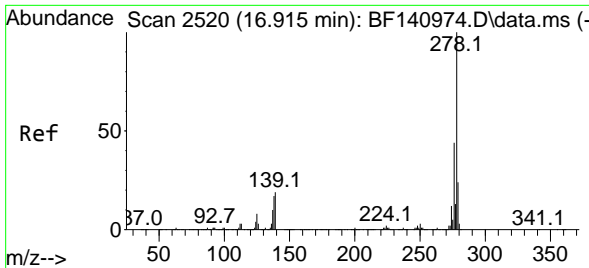


#90
 Benzo(a)pyrene
 Concen: 50.141 ng
 RT: 15.380 min Scan# 2259
 Delta R.T. -0.006 min
 Lab File: BF140983.D
 Acq: 27 Dec 2024 09:11



Tgt Ion:252 Resp: 1540646
 Ion Ratio Lower Upper
 252 100
 253 22.3 17.2 25.8
 125 12.6 9.8 14.8



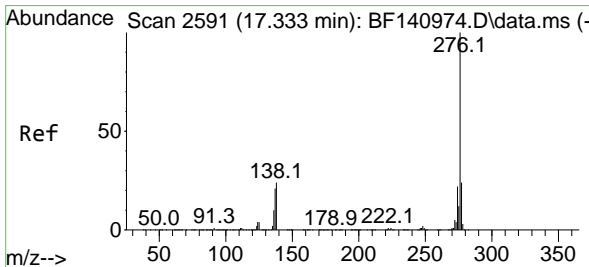
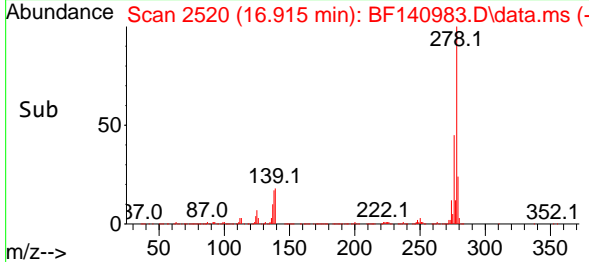
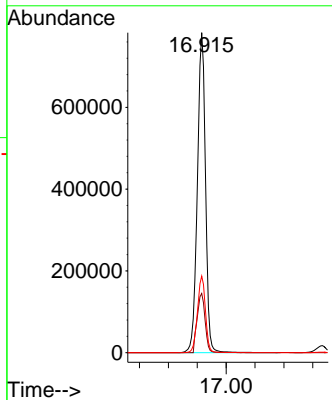
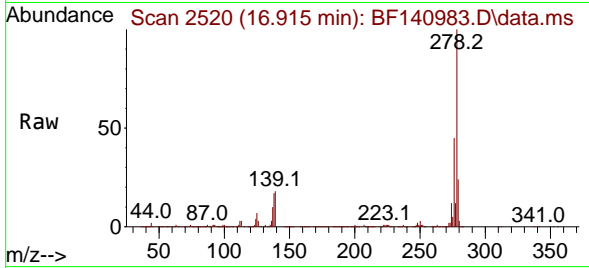


#91
 Dibenzo(a,h)anthracene
 Concen: 52.791 ng
 RT: 16.915 min Scan# 21
 Delta R.T. 0.000 min
 Lab File: BF140983.D
 Acq: 27 Dec 2024 09:11

Instrument :
 BNA_F
 ClientSampleId :
 PB165785BS

Tgt Ion:278 Resp: 1530271

Ion	Ratio	Lower	Upper
278	100		
139	18.5	14.9	22.3
279	23.9	19.0	28.6



#92
 Benzo(g,h,i)perylene
 Concen: 48.367 ng
 RT: 17.333 min Scan# 2591
 Delta R.T. 0.000 min
 Lab File: BF140983.D
 Acq: 27 Dec 2024 09:11

Tgt Ion:276 Resp: 1454174

Ion	Ratio	Lower	Upper
276	100		
277	23.6	19.0	28.4
138	24.2	19.4	29.2

