

Data File : H:\VOL1\GCMSDATA\J\120718\BJ001007.D Vial: 2
 Acq On : 18 Jul 2012 11:41 Operator: HLM
 Sample : P4-7 Inst : BNA J
 Misc : 10.0ug/mL BNA J HLM Multiplr: 1.00
 MS Integration Params: RTEINT.P
 Quant Time: Jul 18 14:00 2012 Quant Results File: BJ071812.RES

Quant Method : H:\VOL1\GCMSDATA\J\METHODS\BJ071812.M (RTE Integrator)
 Title : P4 by SOP M.5
 Last Update : Wed Jul 18 14:01:29 2012
 Response via : Initial Calibration
 DataAcq Meth : P4

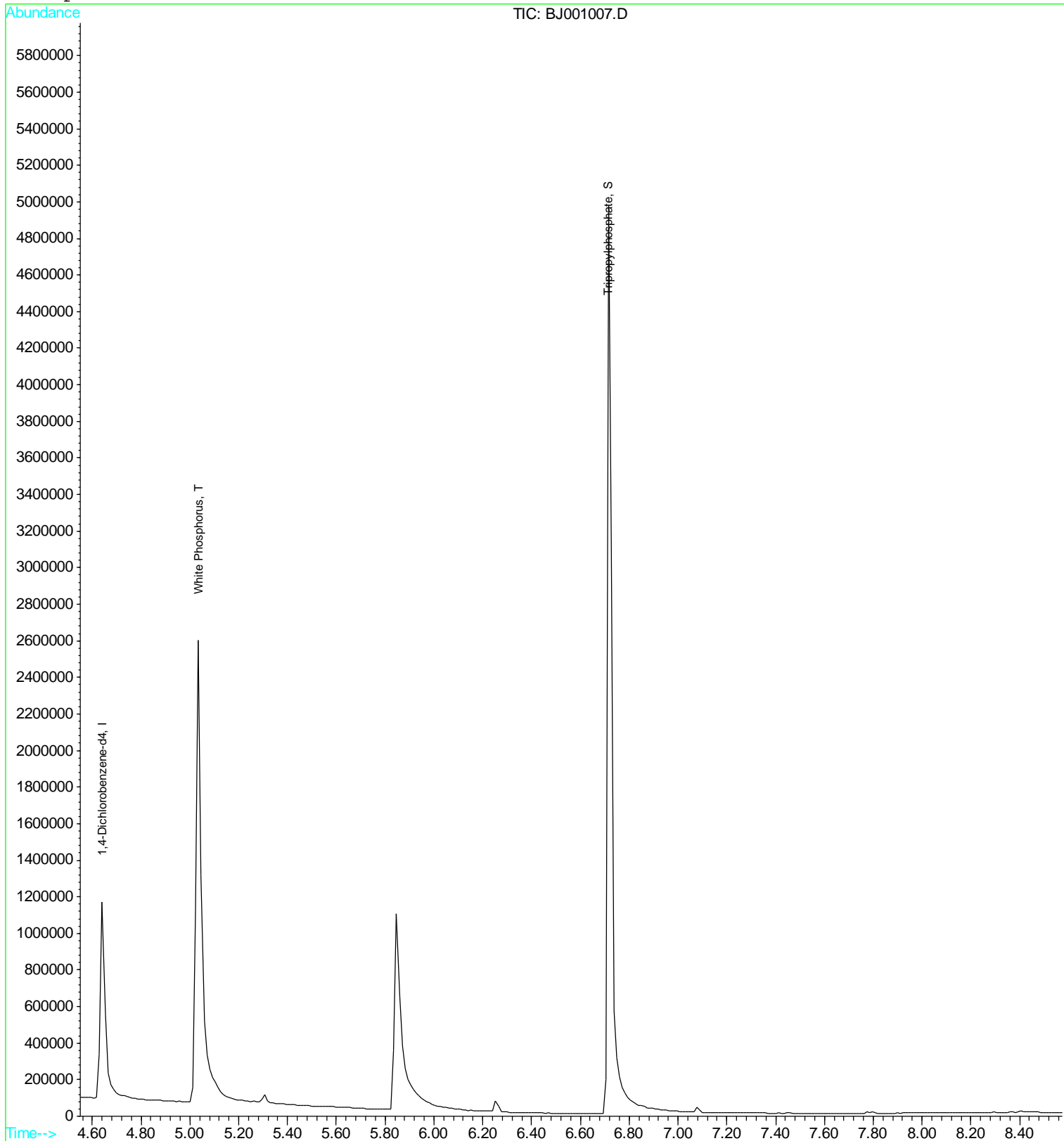
Internal Standards	R.T.	QIon	Response	Conc	Units	Dev(Min)
1) 1,4-Dichlorobenzene-d4	4.64	150	438206	2.50	ug/ml	0.00
System Monitoring Compounds						
2) Tripropylphosphate	6.71	99	3549266	14.04	ug/ml	-0.01
Spiked Amount	2.500	Range	20 - 150	Recovery	=	561.60%#
Target Compounds						
3) White Phosphorus	5.04	124	3512932	11.77	ug/ml	Ovalue 97

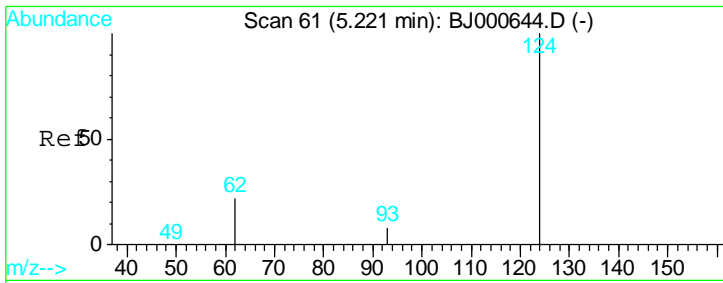
Data File : H:\VOL1\GCMSDATA\J\120718\BJ001007.D
 Acq On : 18 Jul 2012 11:41
 Sample : P4-7
 Misc : 10.0uq/mL BNA J HLM
 MS Integration Params: RTEINT.P
 Quant Time: Jul 18 14:00 2012

Vial: 2
 Operator: HLM
 Inst : BNA J
 Multiplr: 1.00

Quant Results File: BJ071812.RES

Method : H:\VOL1\GCMSDATA\J\METHODS\BJ071812.M (RTE Integrator)
 Title : P4 by SOP M.5
 Last Update : Wed Jul 18 14:01:29 2012
 Response via : Initial Calibration

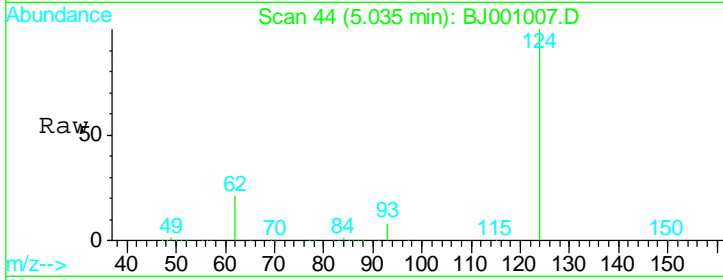




#3
 White Phosphorus
 Concen: 11.77 ug/ml
 RT: 5.04 min Scan# 44
 Delta R.T. 0.00 min
 Lab File: BJ001007.D
 Acq: 18 Jul 2012 11:41

Tgt Ion: 124 Resp: 3512932

Ion	Ratio	Lower	Upper
124	100		
93	8.3	0.0	27.8
62	20.6	0.0	39.0



Abundance Ion 124.00 (123.70 to 124.70): E
 Ion 93.00 (92.70 to 93.70): BJ0
 Ion 62.00 (61.70 to 62.70): BJ0

