

Data File : H:\VOL1\GCMSDATA\J\121112\BJ001216.D
 Acq On : 12 Nov 2012 18:29
 Sample : PB66264BS
 Misc : SOIL BNA J HLM
 MS Integration Params: RTEINT.P
 Quant Time: Nov 12 18:48 2012

Vial: 37
 Operator: HLM
 Inst : BNA J
 Multiplr: 1.00

Instrument :
 BNA_J
 ClientSampled :
 PB66264BS

Quant Results File: BJ111212.RLS

Quant Method : H:\VOL1\GCMSDATA\J\METHODS\BJ111212.M (RTE Integrator)
 Title : P4 by SOP M.5
 Last Update : Mon Nov 12 15:57:53 2012
 Response via : Initial Calibration
 DataAcq Meth : P4

Internal Standards	R.T.	QIon	Response	Conc	Units	Dev(Min)
1) 1,4-Dichlorobenzene-d4	4.40	150	691109	2.50	ug/ml	0.02
System Monitoring Compounds						
2) Tripropylphosphate	6.52	99	1497560	2.69	ug/ml	0.03
Spiked Amount	2.500	Range	20 - 150	Recovery	=	107.60%
Target Compounds						
3) White Phosphorus	4.78	124	481008	0.73	ug/ml	Ovalue 99

Quantitation Report

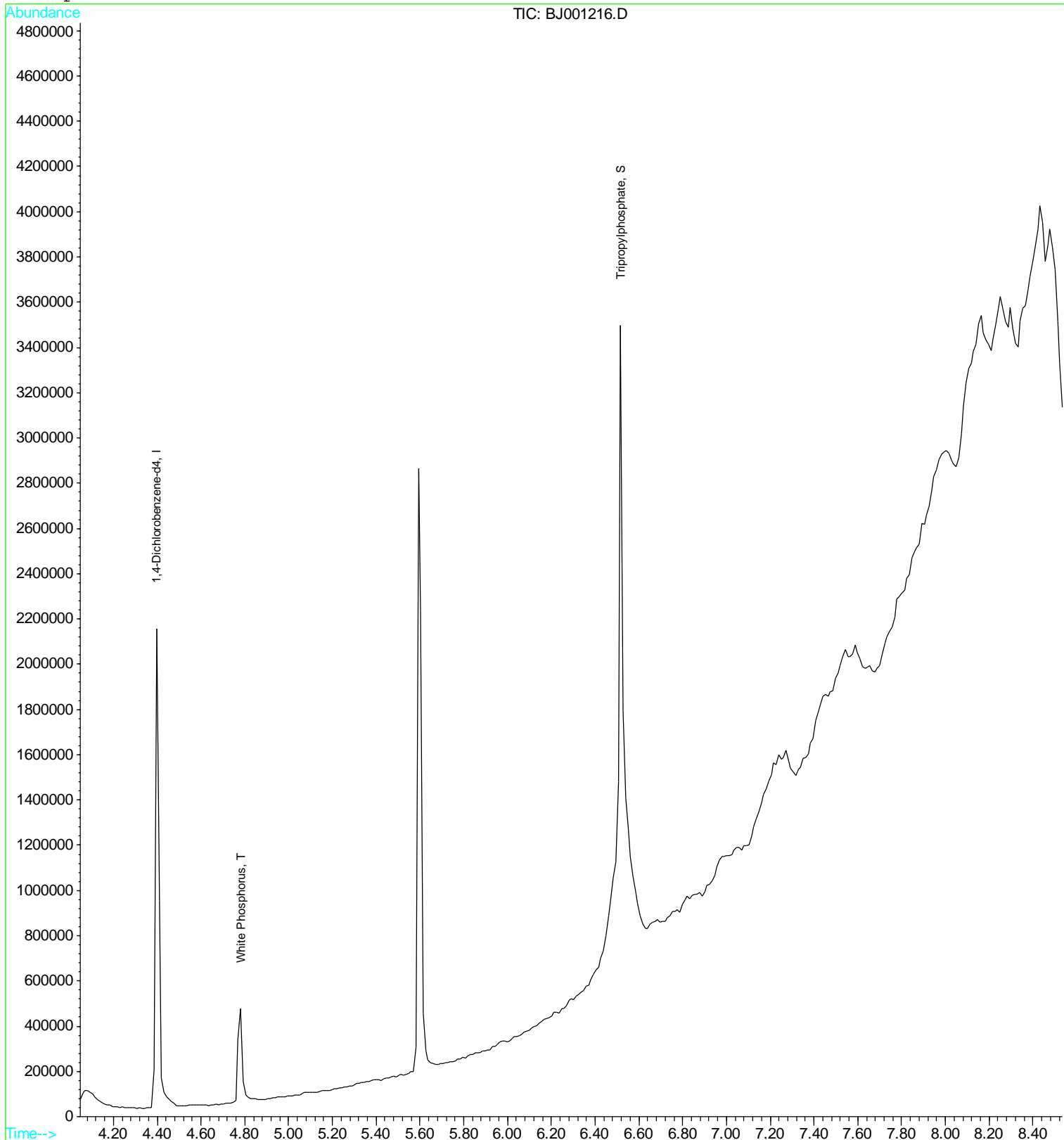
Data File : H:\VOL1\GCMSDATA\J\121112\BJ001216.D
Acq On : 12 Nov 2012 18:29
Sample : PB66264BS
Misc : SOIL BNA J HLM
MS Integration Params: RTEINT.P
Quant Time: Nov 12 18:48 2012

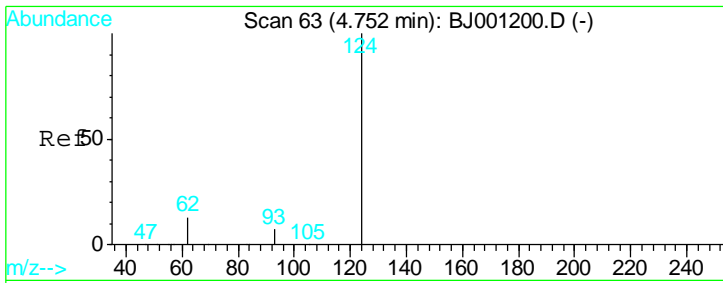
Vial: 37
Operator: HLM
Inst : BNA J
Multiplr: 1.00

Instrument :
BNA_J
ClientSampled :
PB66264BS

Quant Results File: BJ111212.RLS

Method : H:\VOL1\GCMSDATA\J\METHODS\BJ111212.M (RTE Integrator)
Title : P4 by SOP M.5
Last Update : Mon Nov 12 15:57:53 2012
Response via : Initial Calibration





#3
 White Phosphorus
 Concen: 0.73 ug/ml
 RT: 4.78 min Scan# 66
 Delta R.T. 0.03 min
 Lab File: BJ001216.D
 Acq: 12 Nov 2012 18:29

Instrument :
 BNA_J
ClientSampled :
 PB66264BS

Tgt Ion:124 Resp: 481008

Ion	Ratio	Lower	Upper
124	100		
93	7.7	0.0	27.3
62	16.2	0.0	35.9

