

Data File : H:\VOL1\GCMSDATA\J\121112\BJ001219.D
 Acq On : 12 Nov 2012 19:08
 Sample : PB66268BL
 Misc : WATER BNA J HLM
 MS Integration Params: RTEINT.P
 Quant Time: Nov 13 14:20 2012

Vial: 40
 Operator: HLM
 Inst : BNA J
 Multiplr: 1.00

Instrument :
 BNA_J
 ClientSampled :
 PB66268BL

Quant Results File: BJ111212.RLS

Quant Method : H:\VOL1\GCMSDATA\J\METHODS\BJ111212.M (RTE Integrator)
 Title : P4 by SOP M.5
 Last Update : Mon Nov 12 15:57:53 2012
 Response via : Initial Calibration
 DataAcq Meth : P4

Internal Standards	R.T.	QIon	Response	Conc	Units	Dev(Min)
1) 1,4-Dichlorobenzene-d4	4.40	150	698849	2.50	ug/ml	0.02
System Monitoring Compounds						
2) Tripropylphosphate	6.52	99	1288338	2.29	ug/ml	0.03
Spiked Amount	2.500	Range	20 - 150	Recovery	=	91.60%
Target Compounds						
3) White Phosphorus	5.07	124	2158	0.00	ug/ml#	Ovalue 1

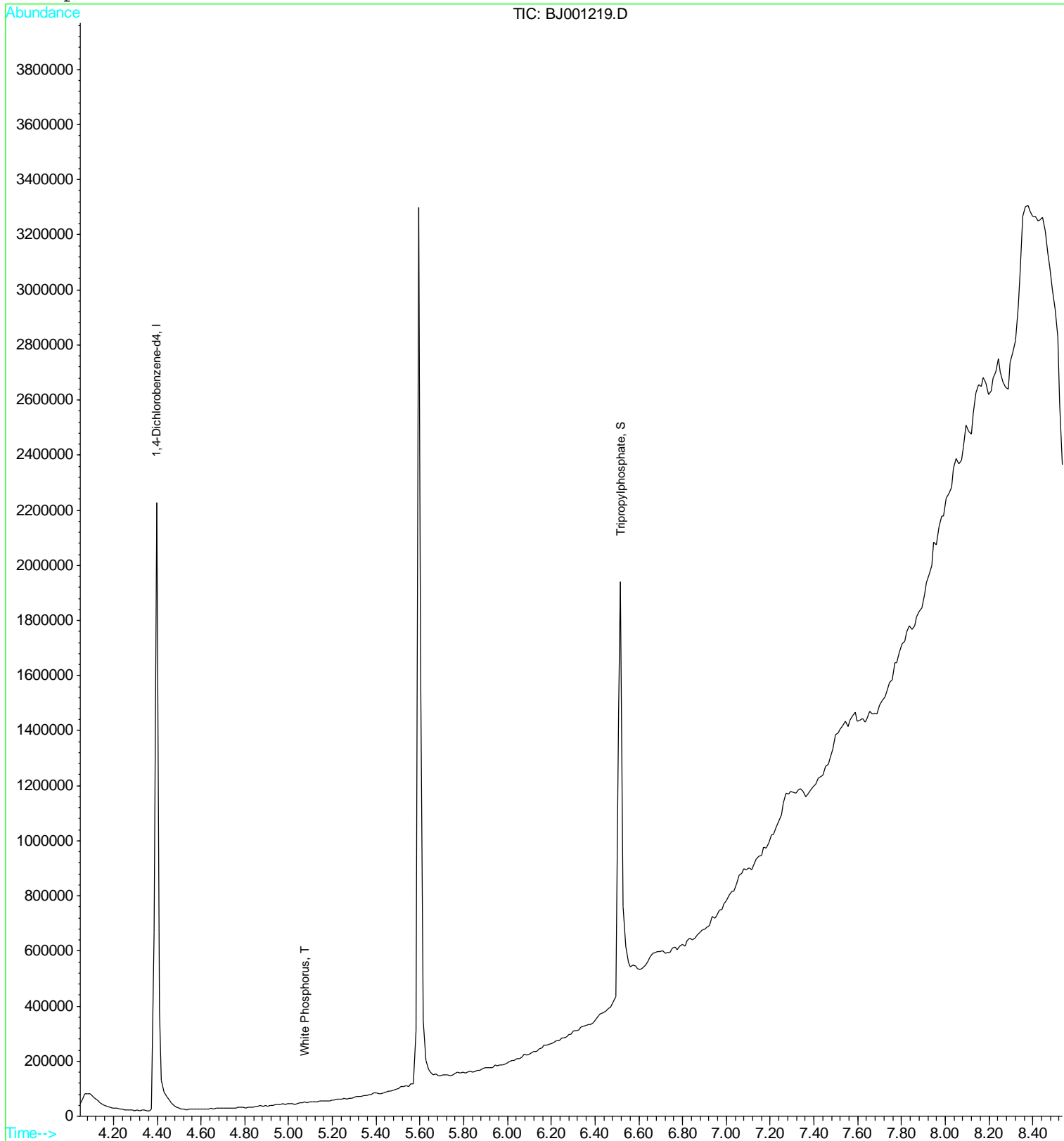
Data File : H:\VOL1\GCMSDATA\J\121112\BJ001219.D
 Acq On : 12 Nov 2012 19:08
 Sample : PB66268BL
 Misc : WATER BNA J HLM
 MS Integration Params: RTEINT.P
 Quant Time: Nov 13 14:20 2012

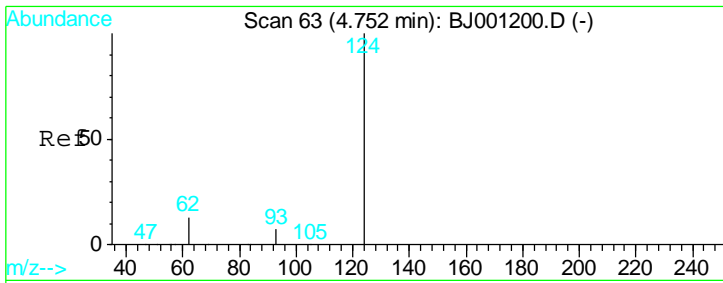
Vial: 40
 Operator: HLM
 Inst : BNA J
 Multiplr: 1.00

Instrument :
 BNA_J
 ClientSampled :
 PB66268BL

Quant Results File: BJ111212.RLS

Method : H:\VOL1\GCMSDATA\J\METHODS\BJ111212.M (RTE Integrator)
 Title : P4 by SOP M.5
 Last Update : Mon Nov 12 15:57:53 2012
 Response via : Initial Calibration





#3
 White Phosphorus
 Concen: 0.00 ug/ml
 RT: 5.07 min Scan# 92
 Delta R.T. 0.32 min
 Lab File: BJ001219.D
 Acq: 12 Nov 2012 19:08

Instrument :
 BNA_J
ClientSampled :
 PB66268BL

Tgt Ion	Resp	Lower	Upper
124	100		
93	0.0	0.0	27.3
62	380.7	0.0	35.9#

