

Data File : H:\VOL1\GCMSDATA\J\121210\BJ001325.D
 Acq On : 10 Dec 2012 17:53
 Sample : CWA-2
 Misc : BNA J HLM
 MS Integration Params: rteint.p
 Quant Time: Dec 10 18:24 2012

Vial: 6
 Operator: HLM
 Inst : BNA J
 Multiplr: 1.00

Instrument :
 BNA_J
 LabSampleId :
 CWA-2

Quant Results File: BJ121012.KES

Quant Method : H:\VOL1\GCMSDATA\J\METHODS\BJ121012.M (RTE Integrator)
 Title : CWA degradation products by GCMS
 Last Update : Wed Dec 05 11:26:13 2012
 Response via : Initial Calibration
 DataAcq Meth : CWAJ

Internal Standards	R.T.	QIon	Response	Conc	Units	Dev(Min)
1) 1,4-Dichlorobenzene-d4	4.37	152	169537	2.00	ug/mL	0.00
6) Naphthalene-d8	5.63	136	839121	2.00	ug/mL	0.00

System Monitoring Compounds

10) Tripropylphosphate	6.70	99	60727	0.15	ug/mL	0.00
Spiked Amount	0.500	Range	70 - 130	Recovery	=	30.00%#
12) 2-Bromothioanisole	6.93	204	74241	1.06	ug/mL	0.00
Spiked Amount	5.000	Range	70 - 130	Recovery	=	21.20%#

Target Compounds

Target Compounds	R.T.	QIon	Response	Conc	Units	Ovalue
2) Dimethyl Disulfide	2.36	94	29972	0.47	ug/mL#	7
3) DMMP	3.29	79	5542	0.07	ug/mL	89
4) DIMP	4.67	97	21455	0.12	ug/mL	84
5) 1,4-Oxathiane	3.36	46	39392	0.38	ug/mL#	73
7) 1,4-Dithiane	4.79	46	38690	0.38	ug/mL	86
8) Thiodiglycol	5.65	61	114649	1.33	ug/mL	95
9) Benzothiazole	5.93	135	226257	0.97	ug/mL	98
11) p-Chlorophenylmethylylsulfid	6.19	158	135032	0.92	ug/mL	96
13) p-Chlorophenylmethylylsulfox	7.63	159	90969	0.92	ug/mL	95
14) p-Chlorophenylmethylylsulfon	7.80	111	137318	0.95	ug/mL	97

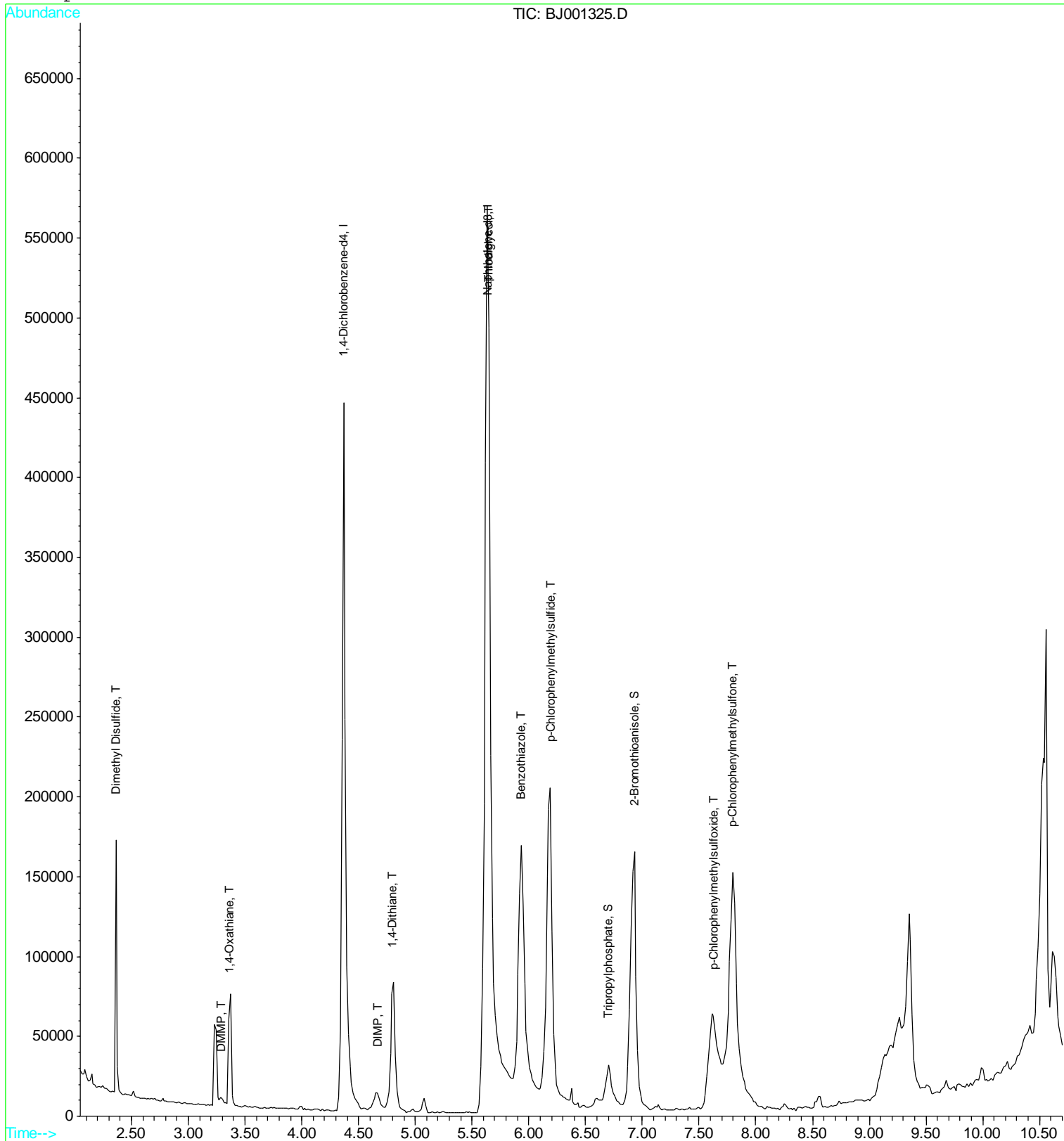
Data File : H:\VOL1\GCMSDATA\J\121210\BJ001325.D
 Acq On : 10 Dec 2012 17:53
 Sample : CWA-2
 Misc : BNA J HLM
 MS Integration Params: rteint.p
 Quant Time: Dec 10 18:24 2012

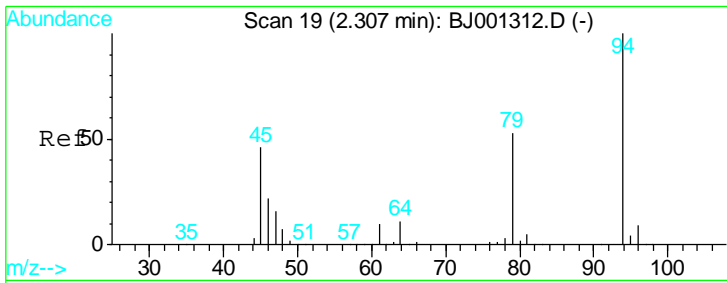
Vial: 6
 Operator: HLM
 Inst : BNA J
 Multiplr: 1.00

Instrument :
 BNA_J
 LabSampleId :
 CWA-2

Quant Results File: BJ121012.KES

Method : H:\VOL1\GCMSDATA\J\METHODS\BJ121012.M (RTE Integrator)
 Title : CWA degradation products by GCMS
 Last Update : Wed Dec 05 11:26:13 2012
 Response via : Initial Calibration



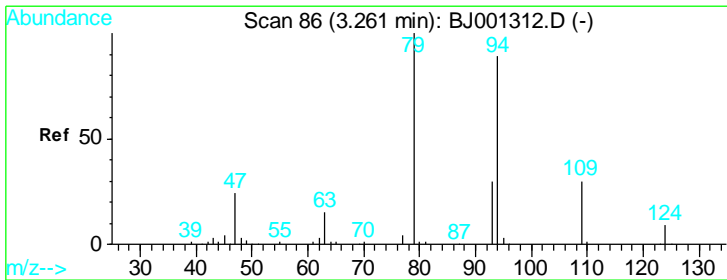
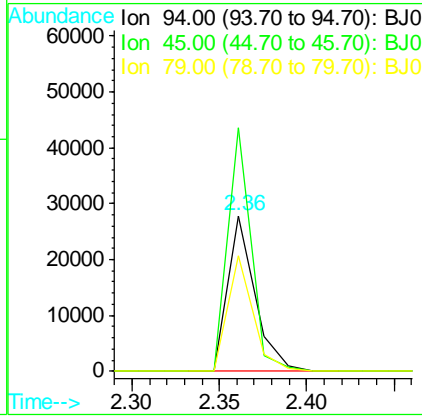
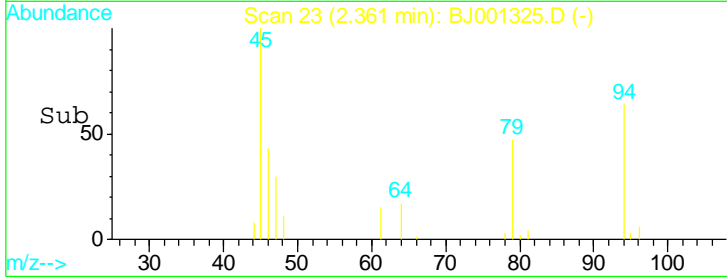
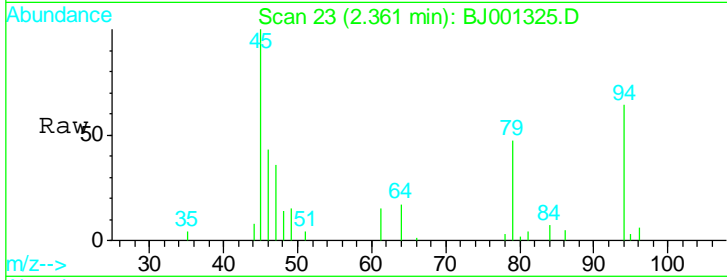


#2
 Dimethyl Disulfide
 Concen: 0.47 ug/mL
 RT: 2.36 min Scan# 23
 Delta R.T. 0.05 min
 Lab File: BJ001325.D
 Acq: 10 Dec 2012 17:53

Instrument :
 BNA_J
LabSampleId :
 CWA-2

Tgt Ion: 94 Resp: 29972

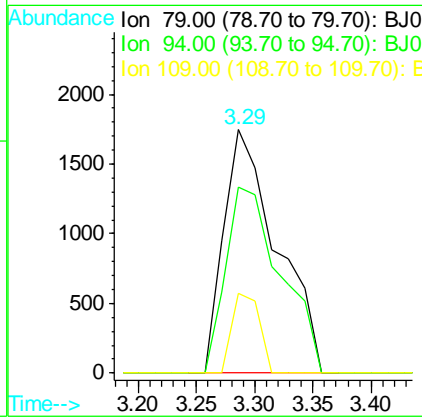
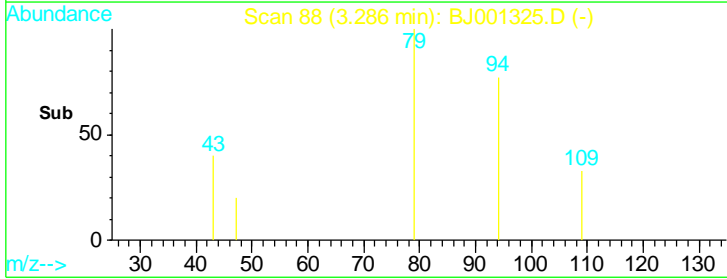
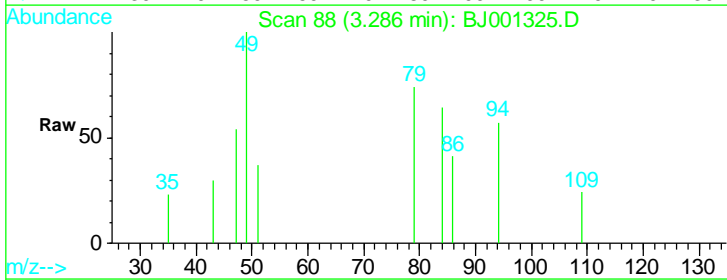
Ion	Ratio	Lower	Upper
94	100		
45	156.5	26.5	66.5#
79	74.1	33.4	73.4#

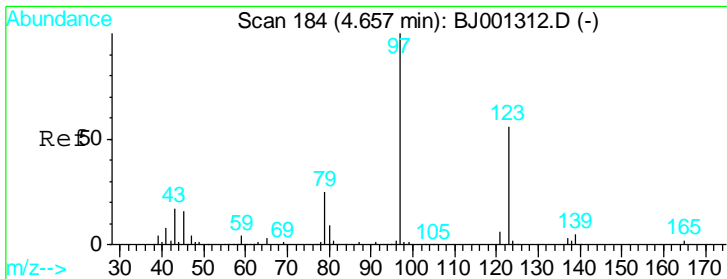


#3
 DMMP
 Concen: 0.07 ug/mL
 RT: 3.29 min Scan# 88
 Delta R.T. 0.02 min
 Lab File: BJ001325.D
 Acq: 10 Dec 2012 17:53

Tgt Ion: 79 Resp: 5542

Ion	Ratio	Lower	Upper
79	100		
94	76.6	69.1	109.1
109	32.8	10.5	50.5



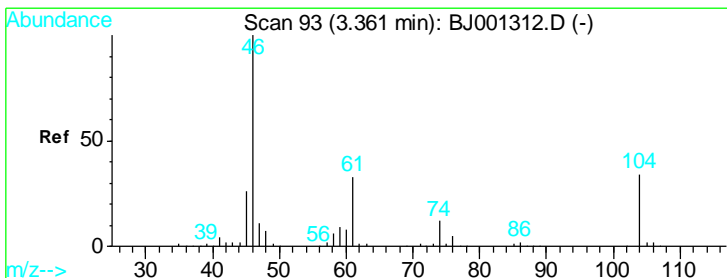
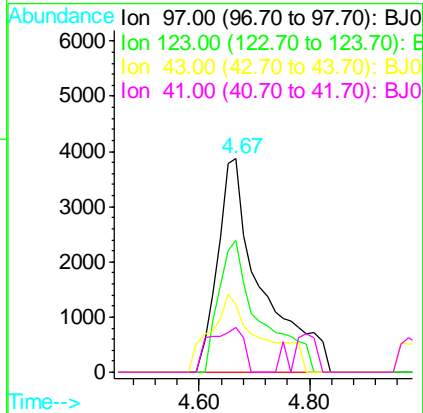
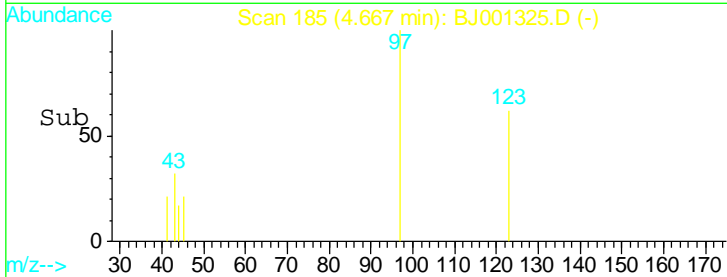
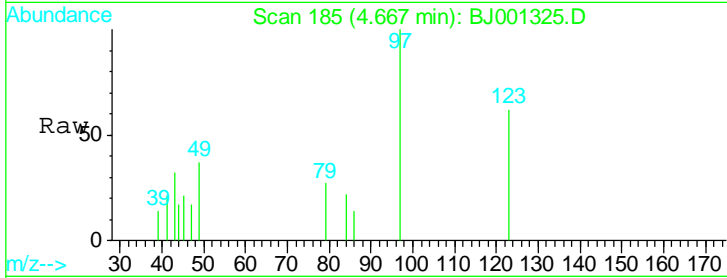


#4
 DIMP
 Concen: 0.12 ug/mL
 RT: 4.67 min Scan# 185
 Delta R.T. 0.01 min
 Lab File: BJ001325.D
 Acq: 10 Dec 2012 17:53

Instrument :
 BNA_J
LabSampleId :
 CWA-2

Tgt Ion: 97 Resp: 21455

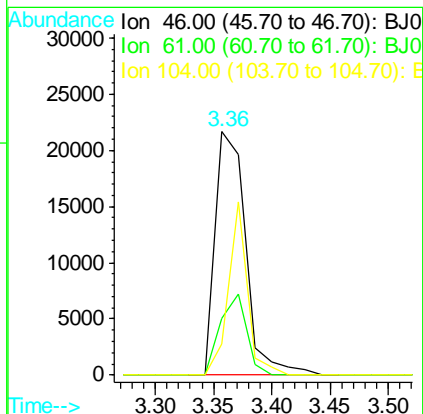
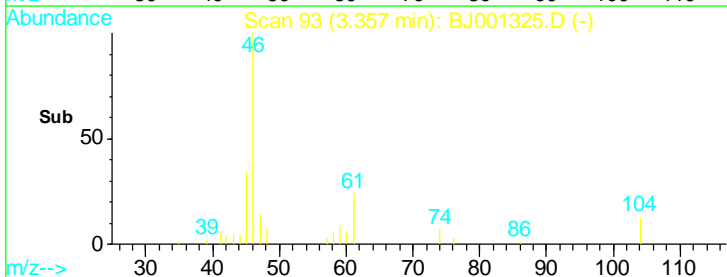
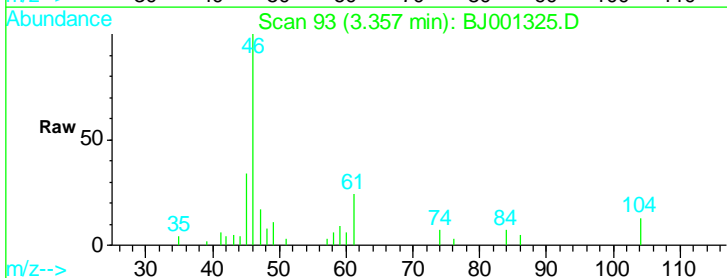
Ion	Ratio	Lower	Upper
97	100		
123	61.6	36.4	76.4
43	31.8	0.0	37.2
41	21.1	0.0	28.0

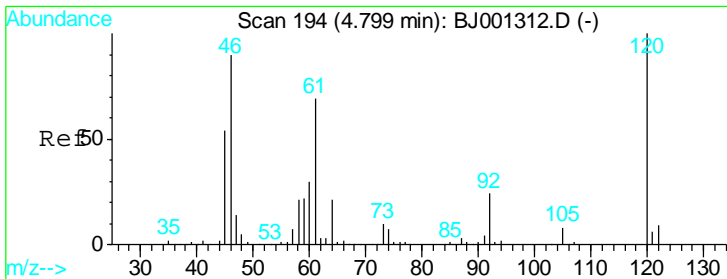


#5
 1,4-Oxathiane
 Concen: 0.38 ug/mL
 RT: 3.36 min Scan# 93
 Delta R.T. -0.00 min
 Lab File: BJ001325.D
 Acq: 10 Dec 2012 17:53

Tgt Ion: 46 Resp: 39392

Ion	Ratio	Lower	Upper
46	100		
61	23.5	13.2	53.2
104	12.9	14.2	54.2#



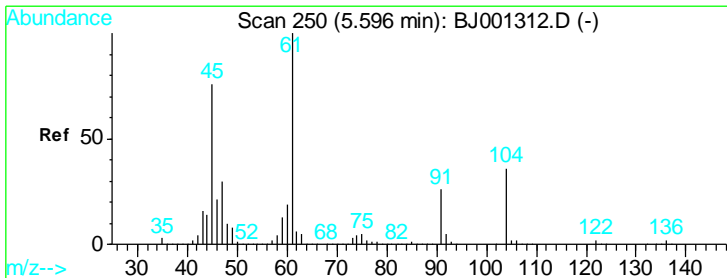
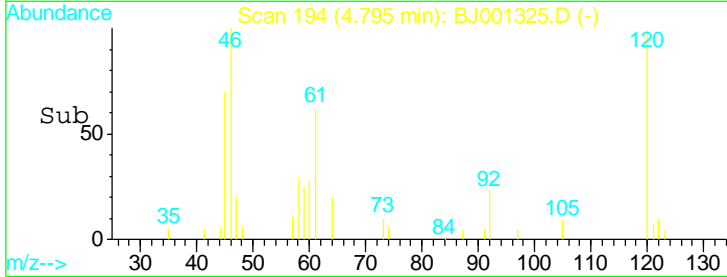
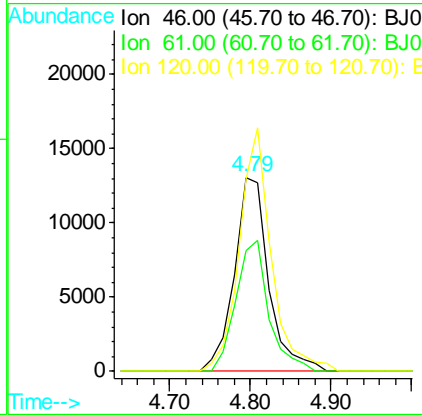
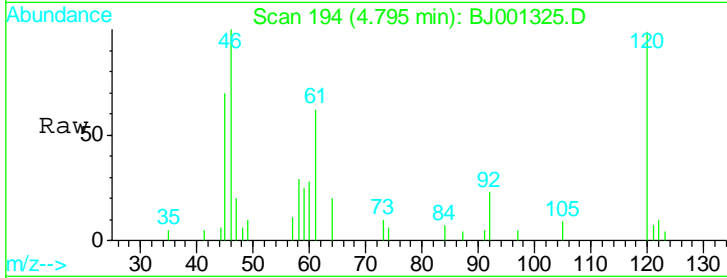


#7
 1,4-Dithiane
 Concen: 0.38 ug/mL
 RT: 4.79 min Scan# 194
 Delta R.T. -0.00 min
 Lab File: BJ001325.D
 Acq: 10 Dec 2012 17:53

Instrument :
 BNA_J
 LabSampleId :
 CWA-2

Tgt Ion: 46 Resp: 38690

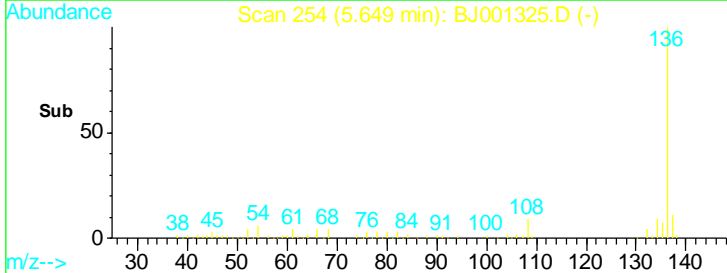
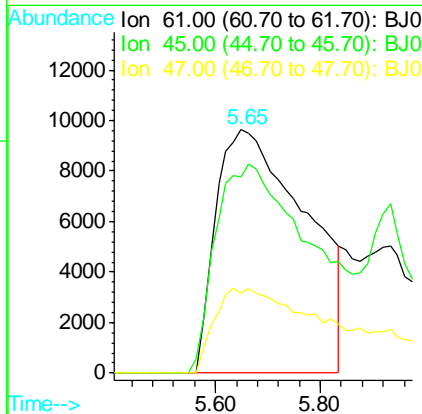
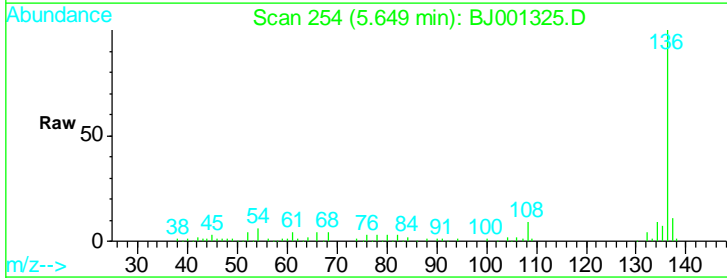
Ion	Ratio	Lower	Upper
46	100		
61	62.3	57.0	97.0
120	99.2	91.5	131.5

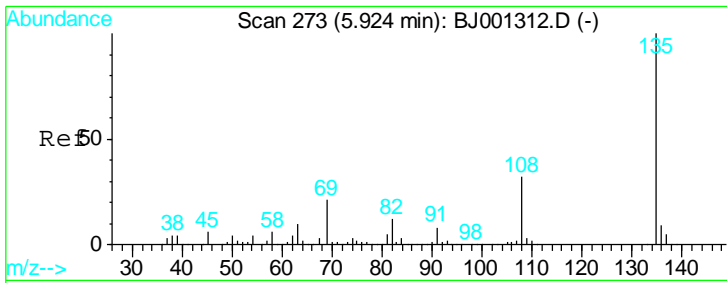


#8
 Thiodiglycol
 Concen: 1.33 ug/mL
 RT: 5.65 min Scan# 254
 Delta R.T. 0.05 min
 Lab File: BJ001325.D
 Acq: 10 Dec 2012 17:53

Tgt Ion: 61 Resp: 114649

Ion	Ratio	Lower	Upper
61	100		
45	80.8	56.0	96.0
47	32.7	10.0	50.0

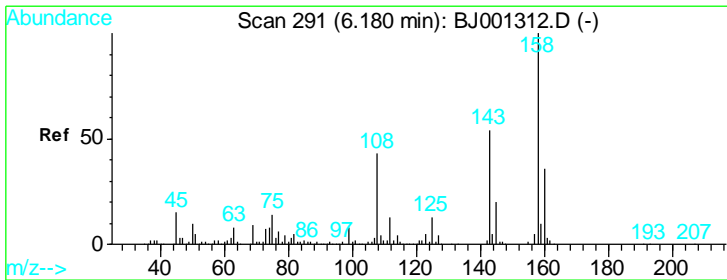
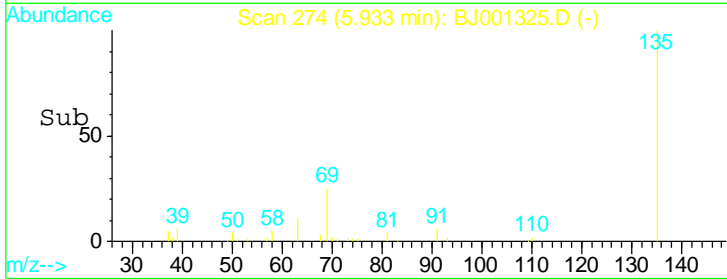
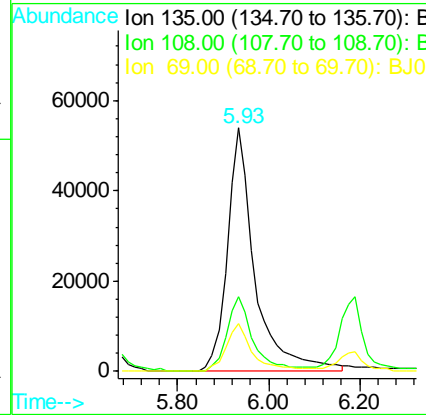
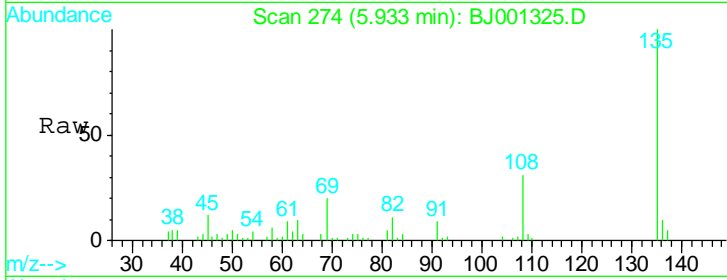




#9
 Benzothiazole
 Concen: 0.97 ug/mL
 RT: 5.93 min Scan# 274
 Delta R.T. 0.01 min
 Lab File: BJ001325.D
 Acq: 10 Dec 2012 17:53

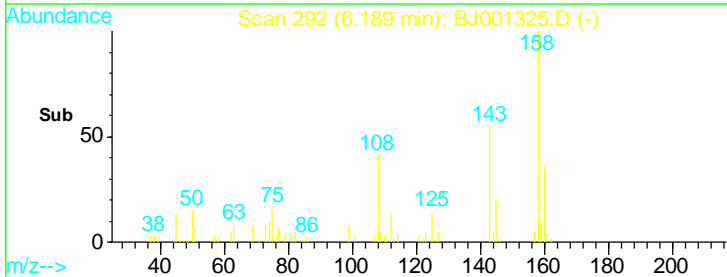
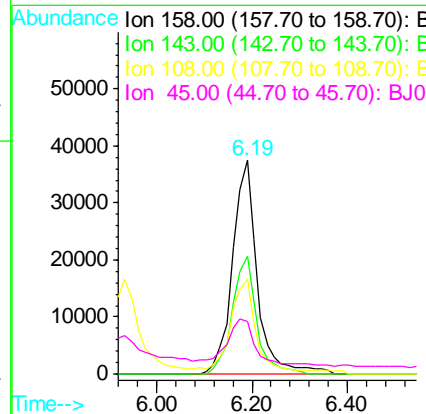
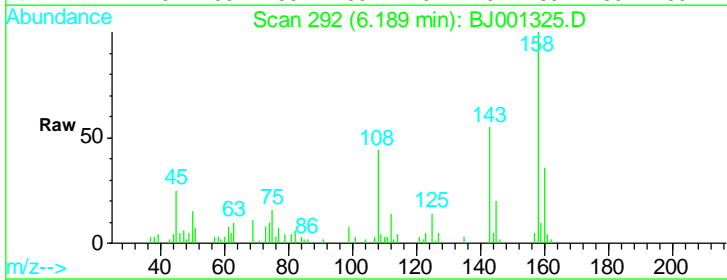
Instrument :
 BNA_J
 LabSampleId :
 CWA-2

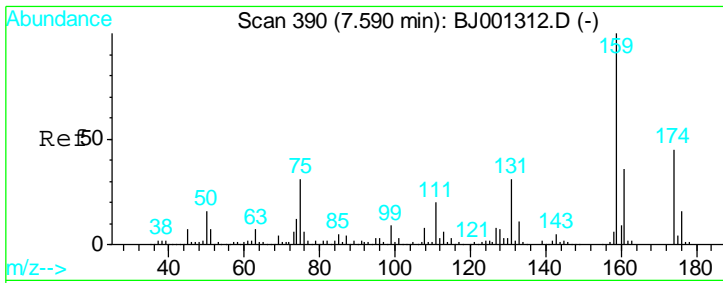
Tgt Ion	Resp	Lower	Upper
135	100		
108	30.9	12.0	52.0
69	19.6	1.1	41.1



#11
 p-Chlorophenylmethylsulfide
 Concen: 0.92 ug/mL
 RT: 6.19 min Scan# 292
 Delta R.T. 0.01 min
 Lab File: BJ001325.D
 Acq: 10 Dec 2012 17:53

Tgt Ion	Resp	Lower	Upper
158	100		
143	55.3	34.4	74.4
108	44.4	22.9	62.9
45	24.8	0.0	36.9

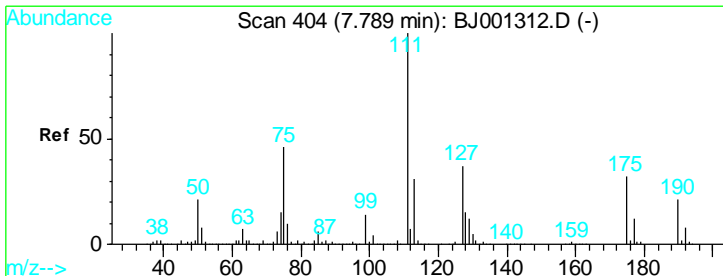
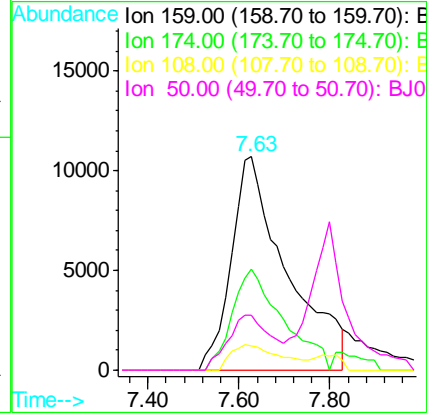
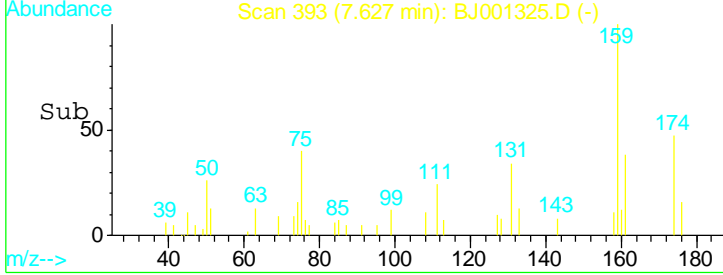
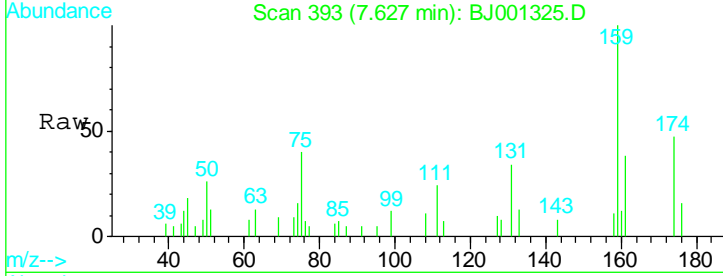




#13
 p-Chlorophenylmethylsulfoxide
 Concen: 0.92 ug/mL
 RT: 7.63 min Scan# 393
 Delta R.T. 0.04 min
 Lab File: BJ001325.D
 Acq: 10 Dec 2012 17:53

Instrument :
 BNA_J
LabSampleId :
 CWA-2

Tgt Ion	Resp	Lower	Upper
159	100		
174	43.0	26.4	66.4
108	11.2	0.0	29.6
50	20.1	3.3	43.3



#14
 p-Chlorophenylmethylsulfone
 Concen: 0.95 ug/mL
 RT: 7.80 min Scan# 405
 Delta R.T. 0.01 min
 Lab File: BJ001325.D
 Acq: 10 Dec 2012 17:53

Tgt Ion	Resp	Lower	Upper
111	100		
75	46.6	27.3	67.3
127	39.2	17.0	57.0
190	23.5	0.8	40.8

