

Data File : H:\VOL1\GCMSDATA\J\120426\BJ000786.D Vial: 2
 Acq On : 26 Apr 2012 16:11 Operator: HLM
 Sample : CWA-CCV Inst : BNA J
 Misc : STD BNA J HLM Multiplr: 1.00
 MS Integration Params: rteint.p
 Quant Time: Apr 26 17:17 2012 Quant Results File: BJ042612.RES

Quant Method : H:\VOL1\GCMSDATA\J\METHODS\BJ042612.M (RTE Integrator)
 Title : CWA degradation products by GCMS
 Last Update : Thu Apr 26 16:13:22 2012
 Response via : Initial Calibration
 DataAcq Meth : CWAJ

Internal Standards	R.T.	QIon	Response	Conc	Units	Dev(Min)
1) 1,4-Dichlorobenzene-d4	4.76	152	296881	2.00	ug/mL	0.00
6) Naphthalene-d8	6.06	136	1209190	2.00	ug/mL	0.00

System Monitoring Compounds

10) Tripropylphosphate	7.10	99	1147149	2.78	ug/mL	0.00
Spiked Amount	0.500	Range	70 - 130	Recovery	=	556.00%#
12) 2-Bromothioanisole	7.35	204	1029738	12.98	ug/mL	0.00
Spiked Amount	5.000	Range	70 - 130	Recovery	=	259.60%#

Target Compounds

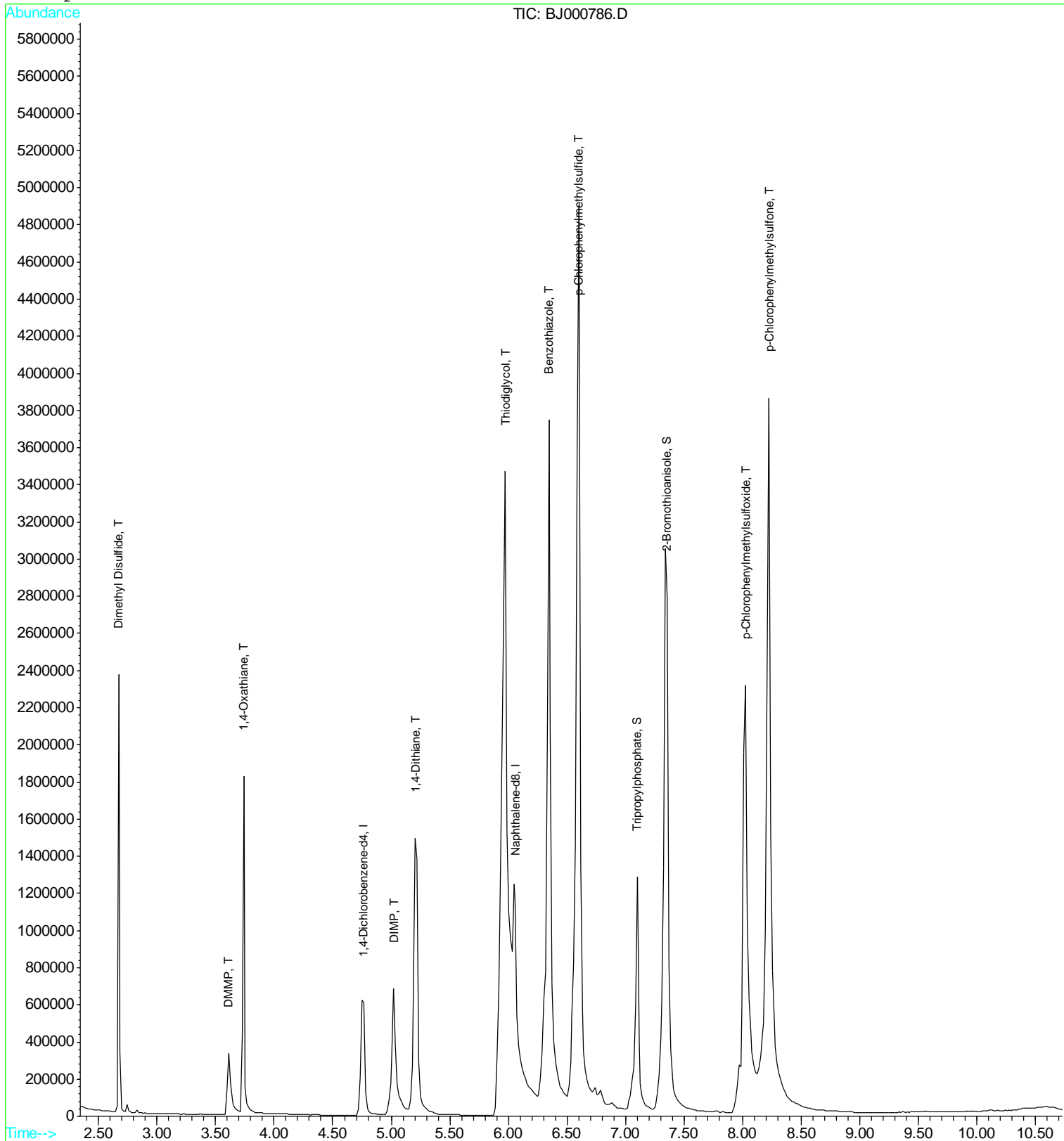
Target Compounds	R.T.	QIon	Response	Conc	Units	Ovalue
2) Dimethyl Disulfide	2.67	94	723405	6.62	ug/mL#	77
3) DMMP	3.61	79	233352	2.45	ug/mL	96
4) DIMP	5.02	97	666125	2.55	ug/mL	98
5) 1,4-Oxathiane	3.74	46	604387	5.74	ug/mL#	38
7) 1,4-Dithiane	5.21	46	525854	6.58	ug/mL	98
8) Thiodiglycol	5.97	61	3474048	43.13	ug/mL	99
9) Benzothiazole	6.34	135	4052371	13.47	ug/mL	100
11) p-Chlorophenylmethylylsulfid	6.60	158	2602372	12.50	ug/mL	98
13) p-Chlorophenylmethylylsulfox	8.02	159	1452765	12.51	ug/mL	96
14) p-Chlorophenylmethylylsulfon	8.22	111	2038596	11.90	ug/mL	97

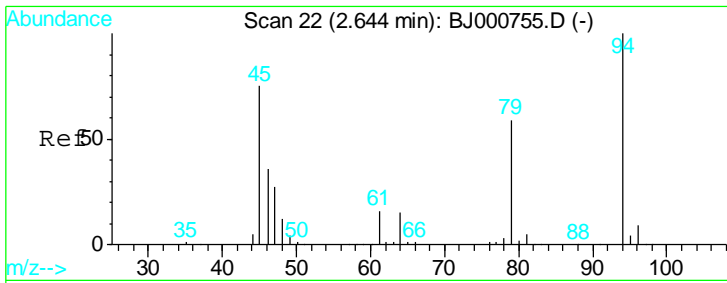
Data File : H:\VOL1\GCMSDATA\J\120426\BJ000786.D
 Acq On : 26 Apr 2012 16:11
 Sample : CWA-CCV
 Misc : STD BNA J HLM
 MS Integration Params: rteint.p
 Quant Time: Apr 26 17:17 2012

Vial: 2
 Operator: HLM
 Inst : BNA J
 Multiplr: 1.00

Quant Results File: BJ042612.RES

Method : H:\VOL1\GCMSDATA\J\METHODS\BJ042612.M (RTE Integrator)
 Title : CWA degradation products by GCMS
 Last Update : Thu Apr 26 16:12:28 2012
 Response via : Initial Calibration

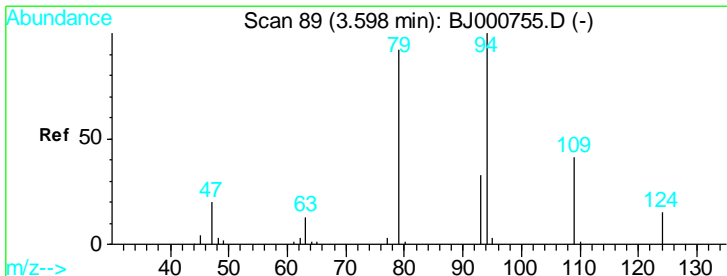
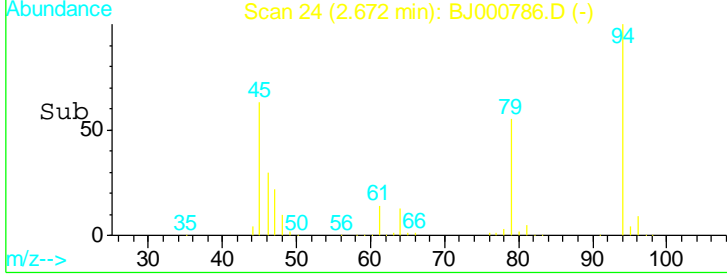
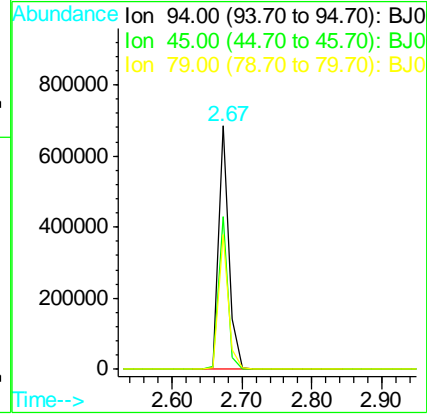
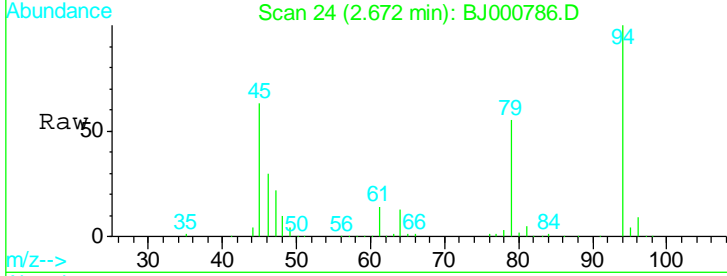




#2
 Dimethyl Disulfide
 Concen: 6.62 ug/mL
 RT: 2.67 min Scan# 24
 Delta R.T. 0.01 min
 Lab File: BJ000786.D
 Acq: 26 Apr 2012 16:11

Tgt Ion: 94 Resp: 723405

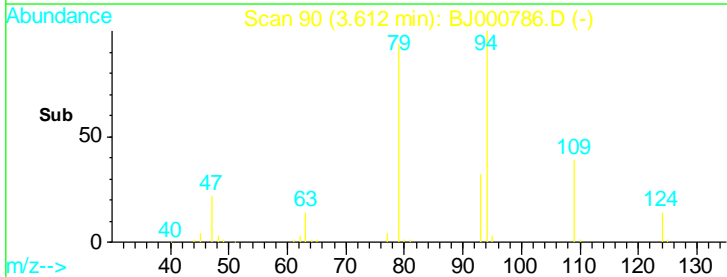
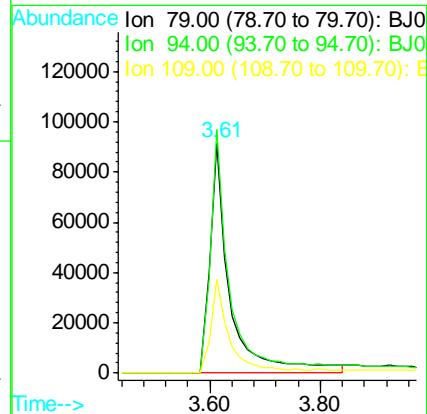
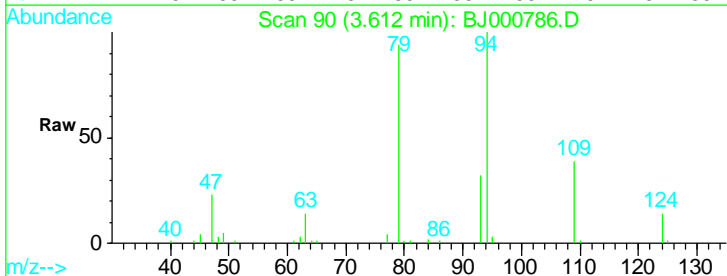
Ion	Ratio	Lower	Upper
94	100		
45	62.7	72.8	112.8#
79	55.3	43.9	83.9

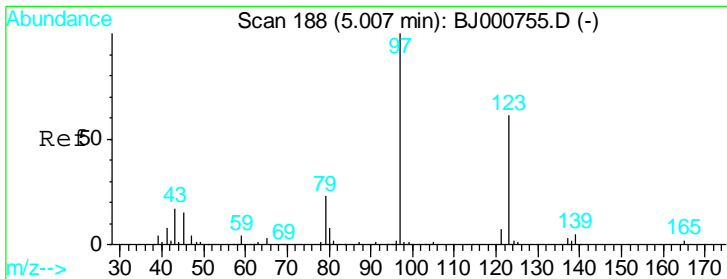


#3
 DMMP
 Concen: 2.45 ug/mL
 RT: 3.61 min Scan# 90
 Delta R.T. 0.01 min
 Lab File: BJ000786.D
 Acq: 26 Apr 2012 16:11

Tgt Ion: 79 Resp: 233352

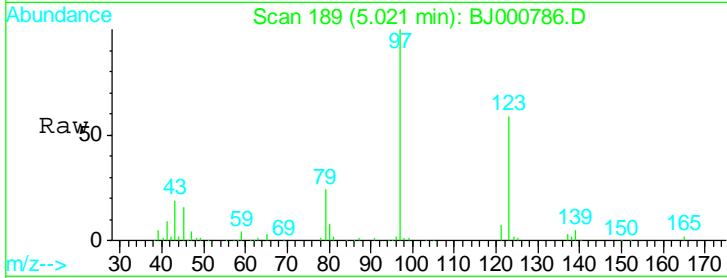
Ion	Ratio	Lower	Upper
79	100		
94	105.9	81.5	121.5
109	40.8	18.2	58.2



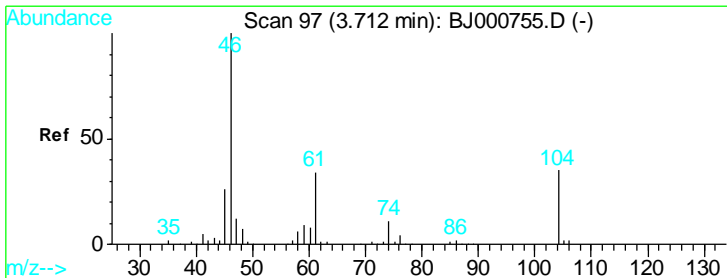
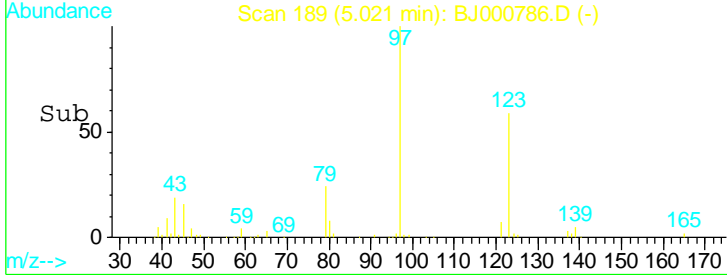
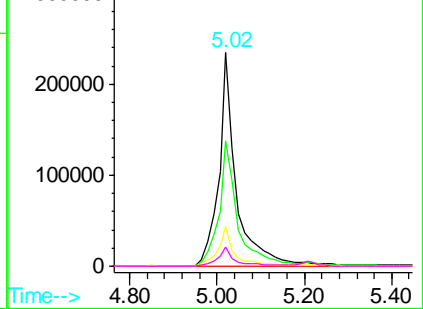


#4
 DIMP
 Concen: 2.55 ug/mL
 RT: 5.02 min Scan# 189
 Delta R.T. -0.01 min
 Lab File: BJ000786.D
 Acq: 26 Apr 2012 16:11

Tgt Ion	Resp	Lower	Upper
97	100		
123	58.9	40.6	80.6
43	18.8	0.0	37.6
41	9.0	0.0	28.4

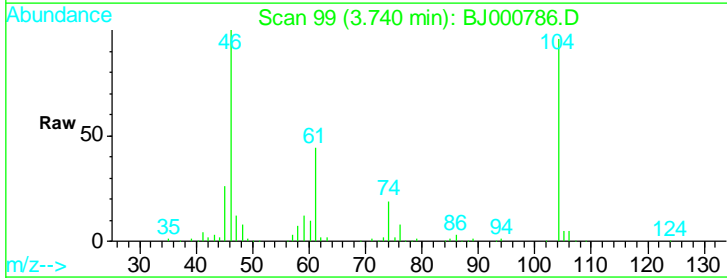


Abundance
 Ion 97.00 (96.70 to 97.70): BJ0
 Ion 123.00 (122.70 to 123.70): B
 Ion 43.00 (42.70 to 43.70): BJ0
 Ion 41.00 (40.70 to 41.70): BJ0

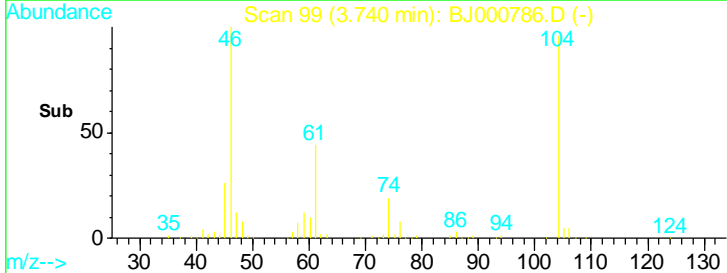
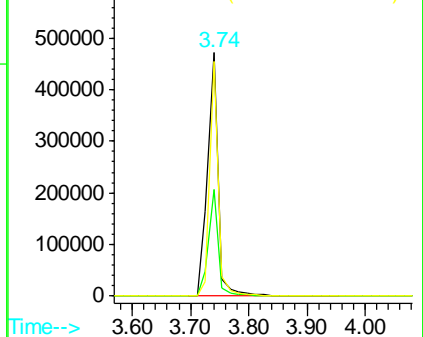


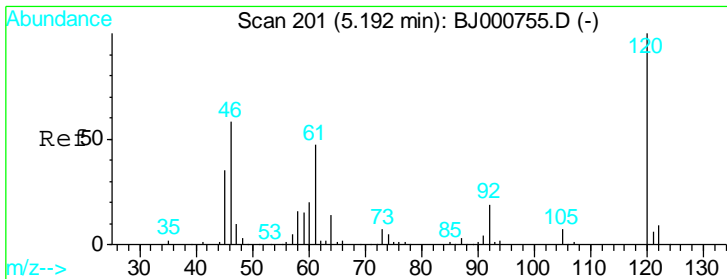
#5
 1,4-Oxathiane
 Concen: 5.74 ug/mL
 RT: 3.74 min Scan# 99
 Delta R.T. 0.01 min
 Lab File: BJ000786.D
 Acq: 26 Apr 2012 16:11

Tgt Ion	Resp	Lower	Upper
46	100		
61	43.6	14.6	54.6
104	96.3	13.7	53.7#



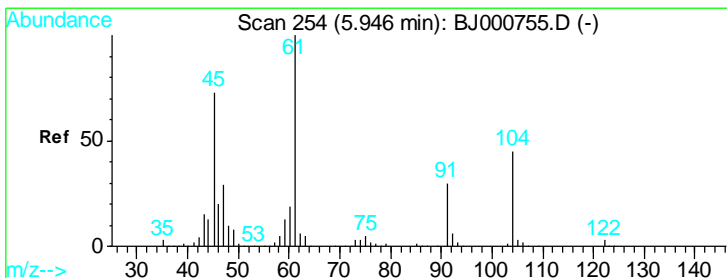
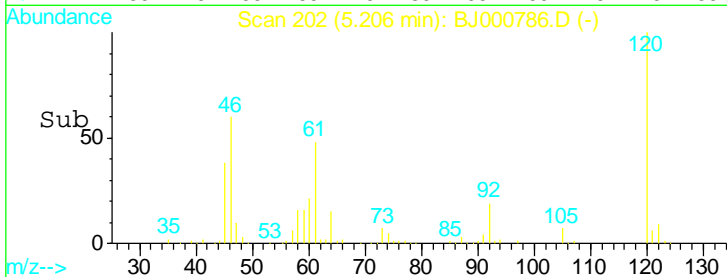
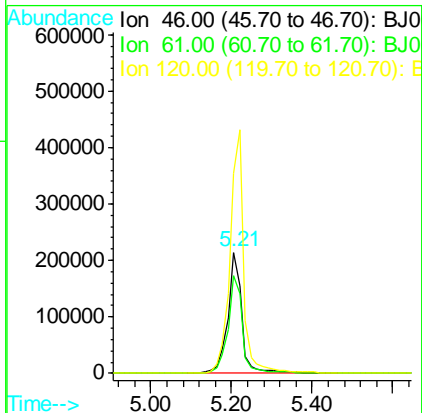
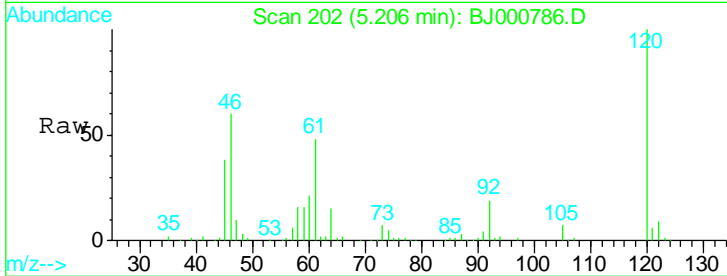
Abundance
 Ion 46.00 (45.70 to 46.70): BJ0
 Ion 61.00 (60.70 to 61.70): BJ0
 Ion 104.00 (103.70 to 104.70): B





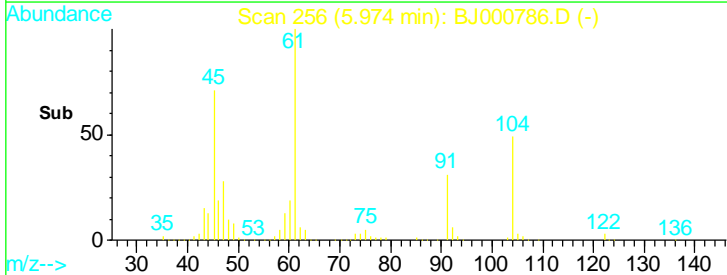
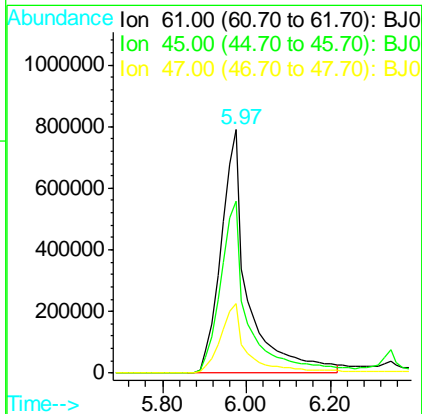
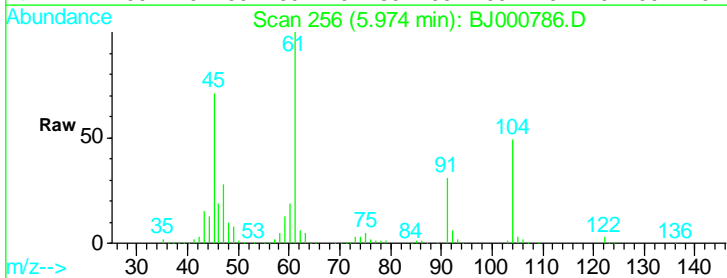
#7
 1,4-Dithiane
 Concen: 6.58 ug/mL
 RT: 5.21 min Scan# 202
 Delta R.T. -0.01 min
 Lab File: BJ000786.D
 Acq: 26 Apr 2012 16:11

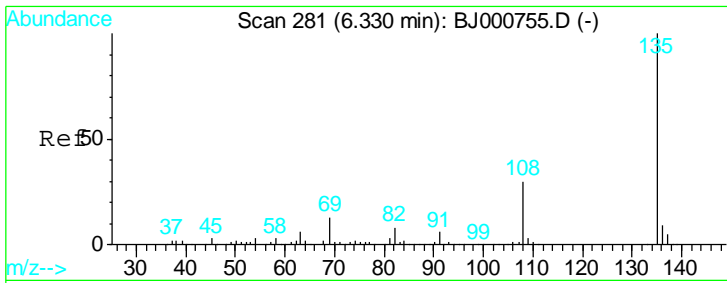
Tgt Ion	Resp	Lower	Upper
46	100		
61	80.3	62.3	102.3
120	166.0	149.0	189.0



#8
 Thiodiglycol
 Concen: 43.13 ug/mL
 RT: 5.97 min Scan# 256
 Delta R.T. 0.01 min
 Lab File: BJ000786.D
 Acq: 26 Apr 2012 16:11

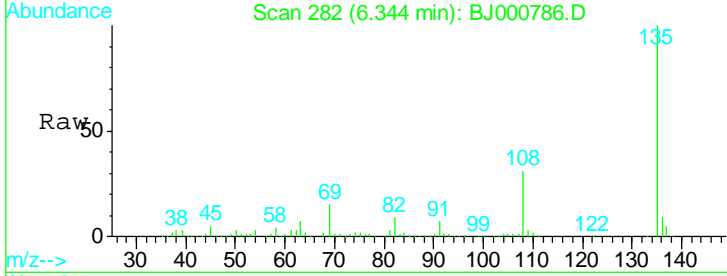
Tgt Ion	Resp	Lower	Upper
61	100		
45	70.6	49.4	89.4
47	28.3	7.9	47.9



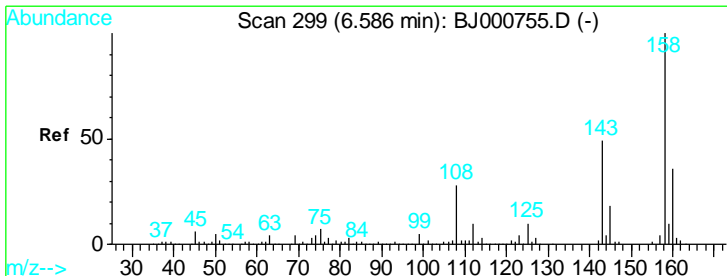
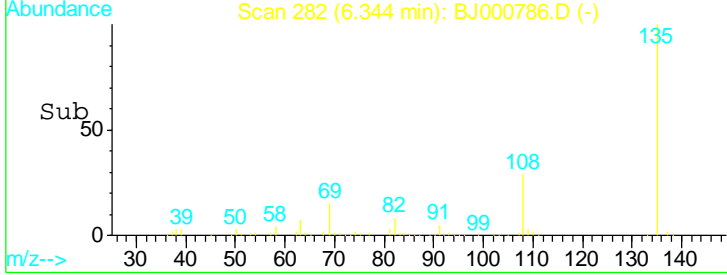
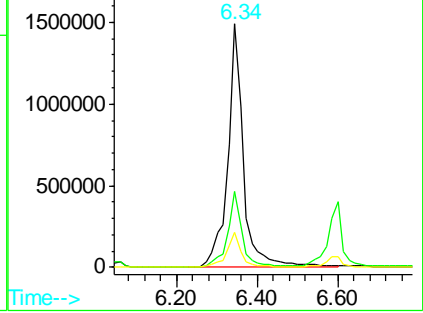


#9
 Benzothiazole
 Concen: 13.47 ug/mL
 RT: 6.34 min Scan# 282
 Delta R.T. -0.01 min
 Lab File: BJ000786.D
 Acq: 26 Apr 2012 16:11

Tgt Ion	Resp	Lower	Upper
135	100		
108	31.1	11.0	51.0
69	14.6	0.0	34.2

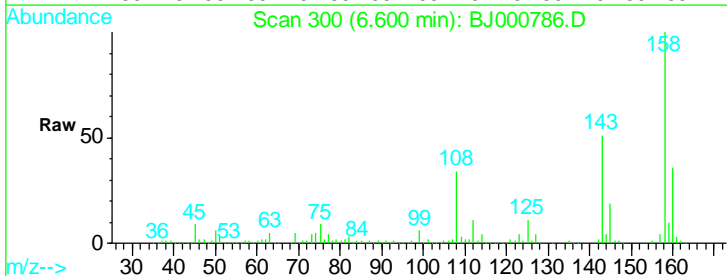


Abundance Ion 135.00 (134.70 to 135.70): E
 Ion 108.00 (107.70 to 108.70): E
 Ion 69.00 (68.70 to 69.70): BJO

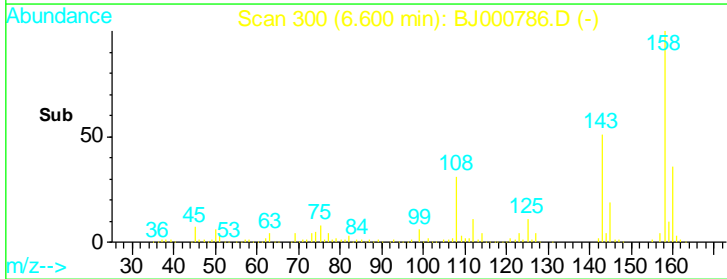
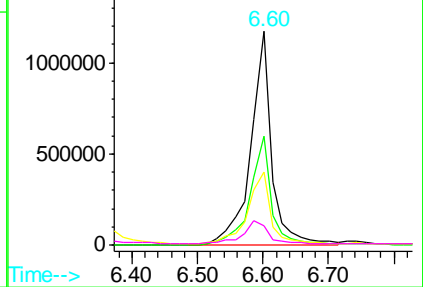


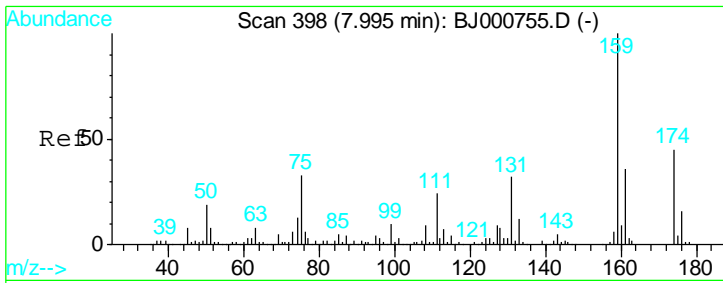
#11
 p-Chlorophenylmethylsulfide
 Concen: 12.50 ug/mL
 RT: 6.60 min Scan# 300
 Delta R.T. 0.01 min
 Lab File: BJ000786.D
 Acq: 26 Apr 2012 16:11

Tgt Ion	Resp	Lower	Upper
158	100		
143	50.8	31.4	71.4
108	34.1	15.5	55.5
45	9.1	0.0	32.2



Abundance Ion 158.00 (157.70 to 158.70): E
 Ion 143.00 (142.70 to 143.70): E
 Ion 108.00 (107.70 to 108.70): E
 Ion 45.00 (44.70 to 45.70): BJO

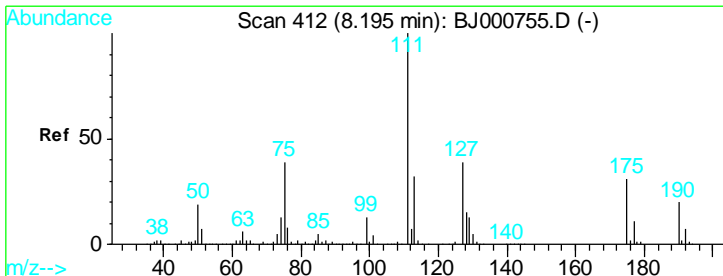
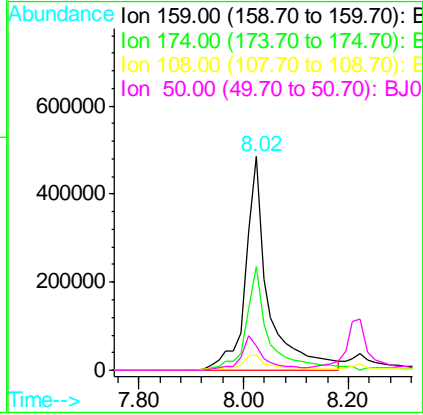
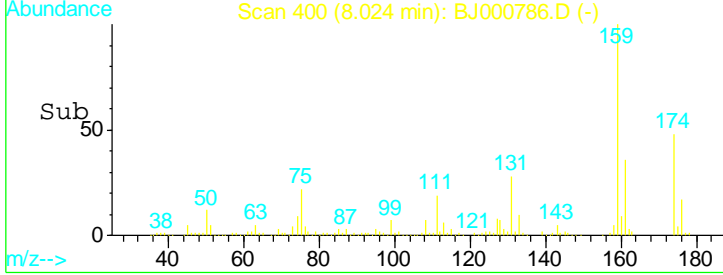
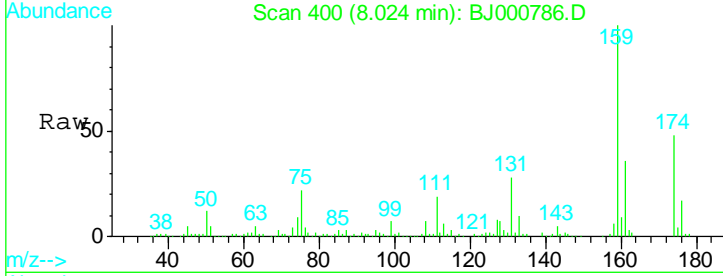




#13
 p-Chlorophenylmethylsulfoxide
 Concen: 12.51 ug/mL
 RT: 8.02 min Scan# 400
 Delta R.T. 0.01 min
 Lab File: BJ000786.D
 Acq: 26 Apr 2012 16:11

Tgt Ion:159 Resp: 1452765

Ion	Ratio	Lower	Upper
159	100		
174	48.6	31.3	71.3
108	8.2	0.0	31.3
50	16.1	0.0	35.6



#14
 p-Chlorophenylmethylsulfone
 Concen: 11.90 ug/mL
 RT: 8.22 min Scan# 414
 Delta R.T. 0.01 min
 Lab File: BJ000786.D
 Acq: 26 Apr 2012 16:11

Tgt Ion:111 Resp: 2038596

Ion	Ratio	Lower	Upper
111	100		
75	32.8	14.1	54.1
127	41.9	21.7	61.7
190	27.7	11.8	51.8

