

Data Path : Z:\svoasrv\HPCHEM1\BNA\_M\Data\BM010524\  
 Data File : BM043782.D  
 Acq On : 06 Jan 2024 04:56  
 Operator : MA/JU  
 Sample : 05952-14MEDL 20X  
 Misc :  
 ALS Vial : 28 Sample Multiplier: 1

**Instrument :**

BNA\_M

**ClientSampleId :**

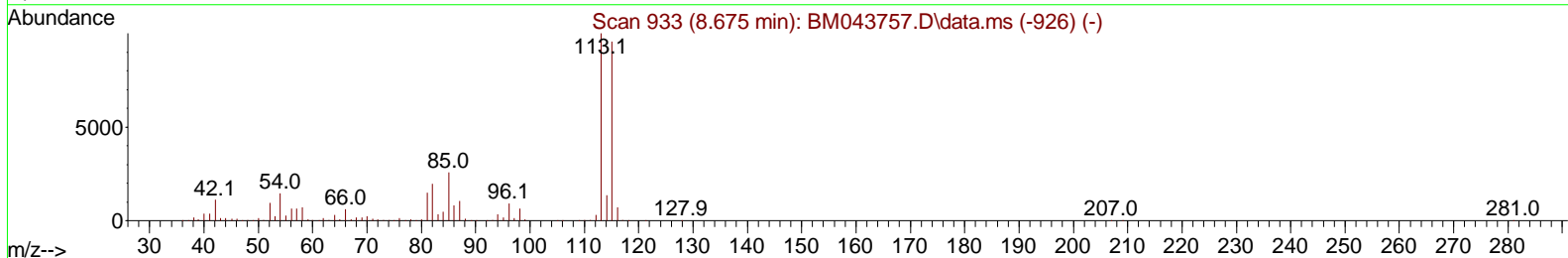
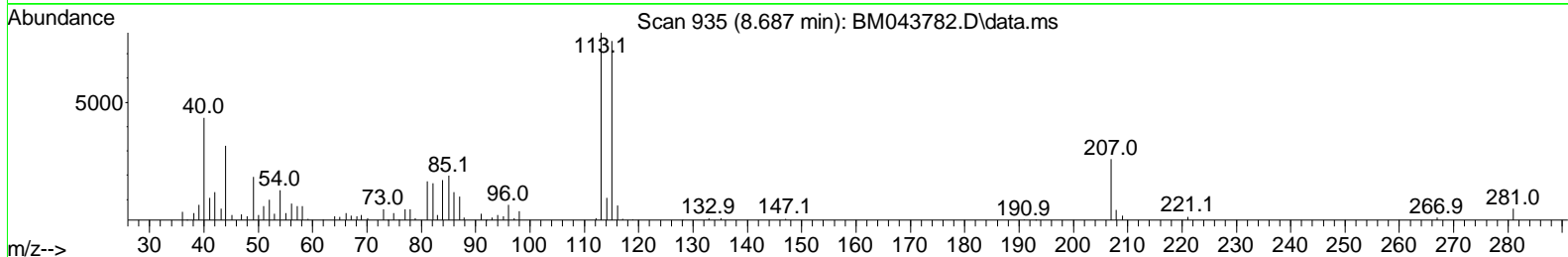
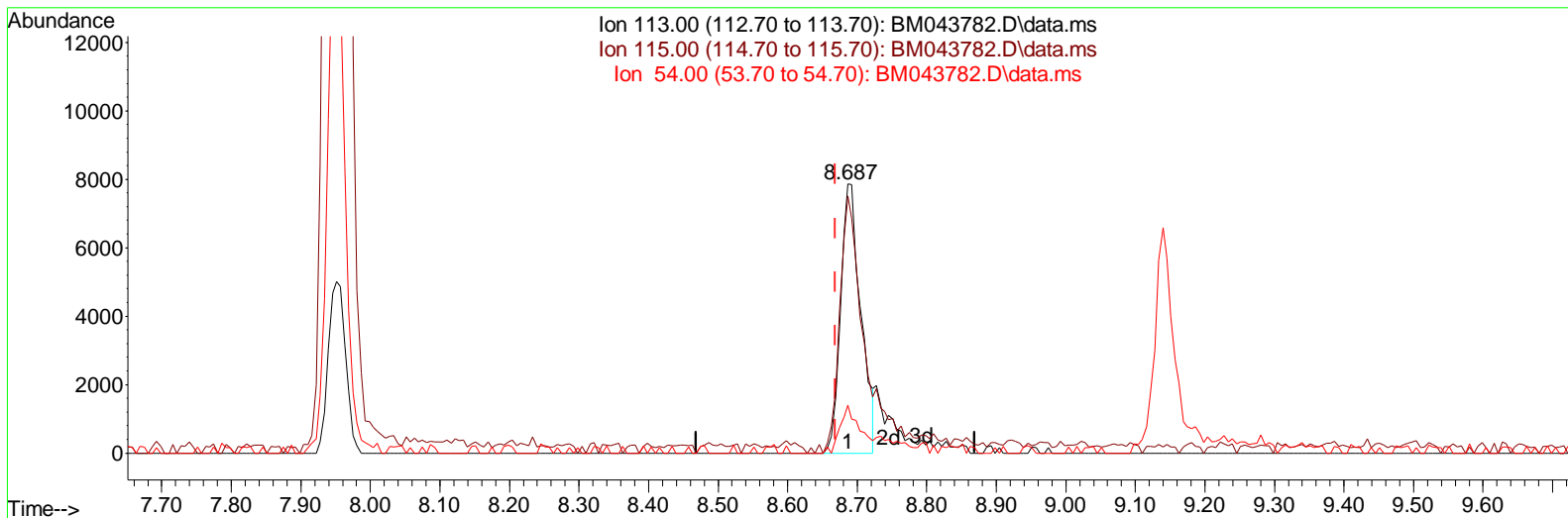
GCF97MEDL

**Manual IntegrationsAPPROVED**

Reviewed By :Yogesh Patel 01/08/2024

Supervised By :mohammad ahmed 01/08/2024

Quant Time: Jan 06 05:25:27 2024  
 Quant Method : Z:\svoasrv\HPCHEM1\BNA\_M\Methods\SFAM-EPA-BM121523.MA.M  
 Quant Title : SVOA CALIBRATION  
 QLast Update : Fri Dec 29 22:31:57 2023  
 Response via : Initial Calibration



TIC: BM043782.D\data.ms

(15) 4-Methylphenol-d8 (S)

8.687min (+ 0.017) 0.60 ng/ul

response 15938

Ion	Exp%	Act%
113.00	100.00	100.00
115.00	95.60	95.71
54.00	15.00	17.71
0.00	0.00	0.00

Data Path : Z:\svoasrv\HPCHEM1\BNA\_M\Data\BM010524\  
 Data File : BM043782.D  
 Acq On : 06 Jan 2024 04:56  
 Operator : MA/JU  
 Sample : 05952-14MEDL 20X  
 Misc :  
 ALS Vial : 28 Sample Multiplier: 1

**Instrument :**

BNA\_M

**ClientSampleId :**

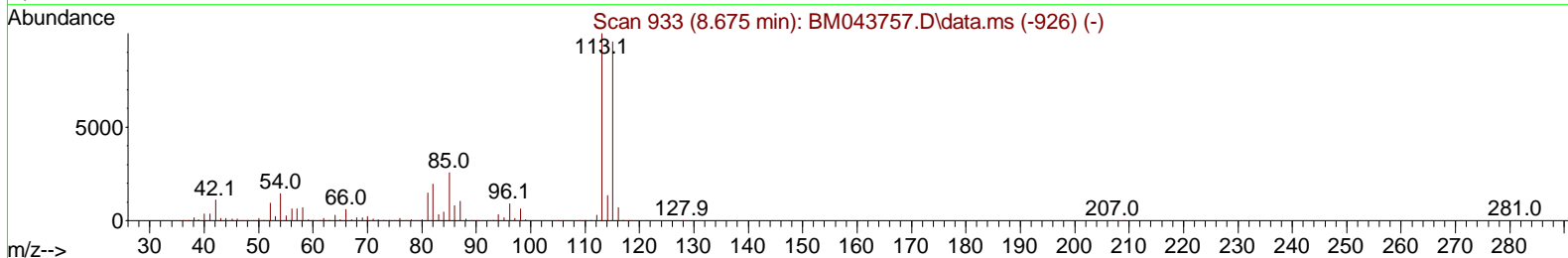
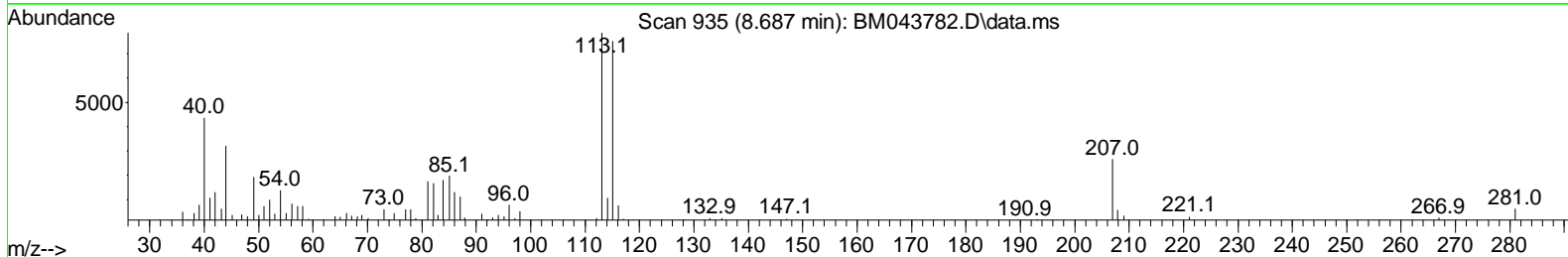
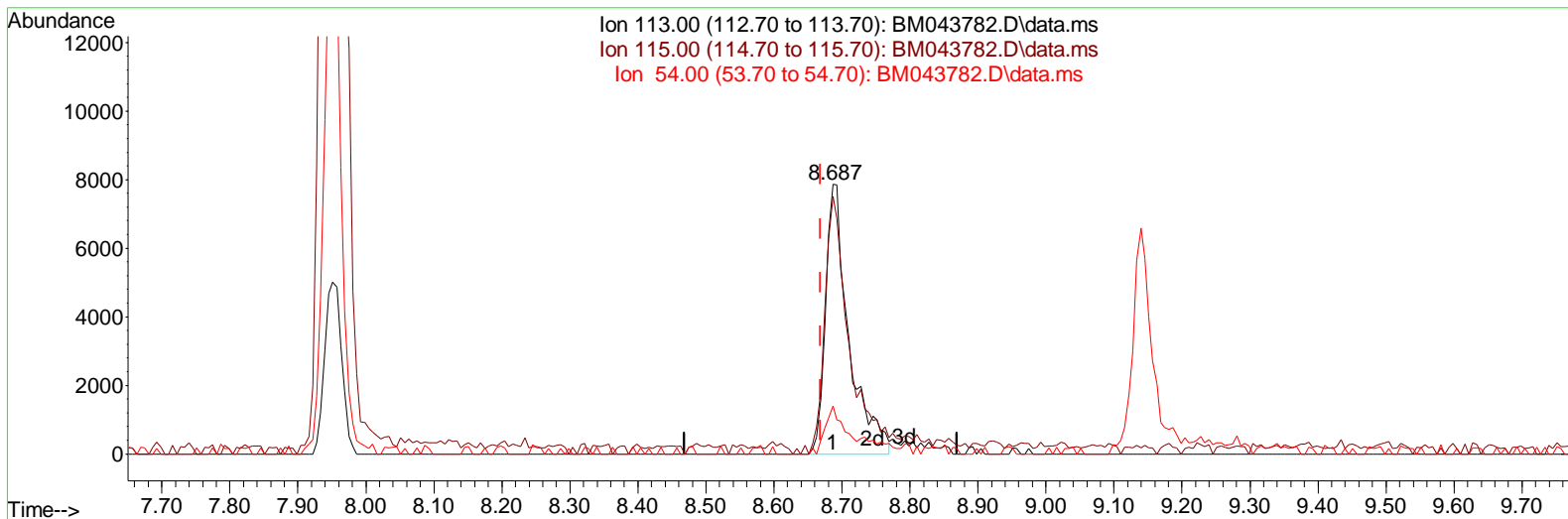
GCF97MEDL

**Manual IntegrationsAPPROVED**

Reviewed By :Yogesh Patel 01/08/2024

Supervised By :mohammad ahmed 01/08/2024

Quant Time: Jan 06 05:25:27 2024  
 Quant Method : Z:\svoasrv\HPCHEM1\BNA\_M\Methods\SFAM-EPA-BM121523.MA.M  
 Quant Title : SVOA CALIBRATION  
 QLast Update : Fri Dec 29 22:31:57 2023  
 Response via : Initial Calibration



TIC: BM043782.D\data.ms

(15) 4-Methylphenol-d8 (S)

8.687min (+ 0.017) 0.70 ng/ul m

response 18757

Ion	Exp%	Act%
113.00	100.00	100.00
115.00	95.60	95.71
54.00	15.00	17.71
0.00	0.00	0.00

Data Path : Z:\svoasrv\HPCHEM1\BNA\_M\Data\BM010524\  
 Data File : BM043782.D  
 Acq On : 06 Jan 2024 04:56  
 Operator : MA/JU  
 Sample : 05952-14MEDL 20X  
 Misc :  
 ALS Vial : 28 Sample Multiplier: 1

**Instrument :**

BNA\_M

**ClientSampleId :**

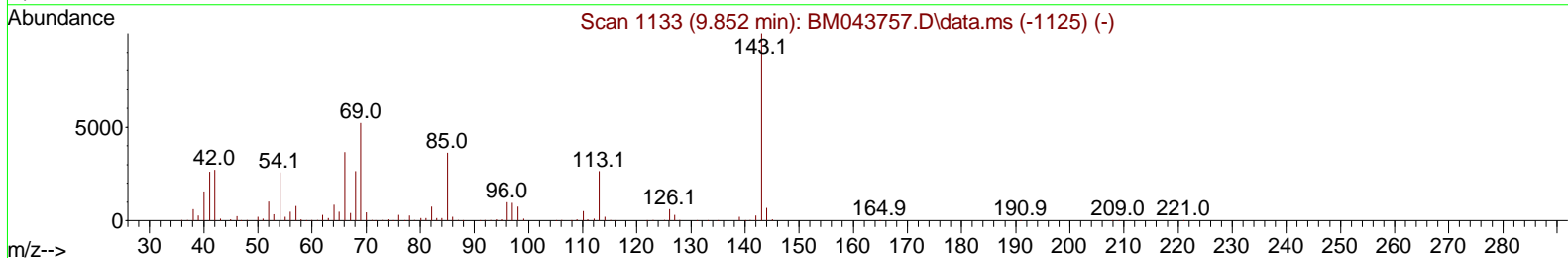
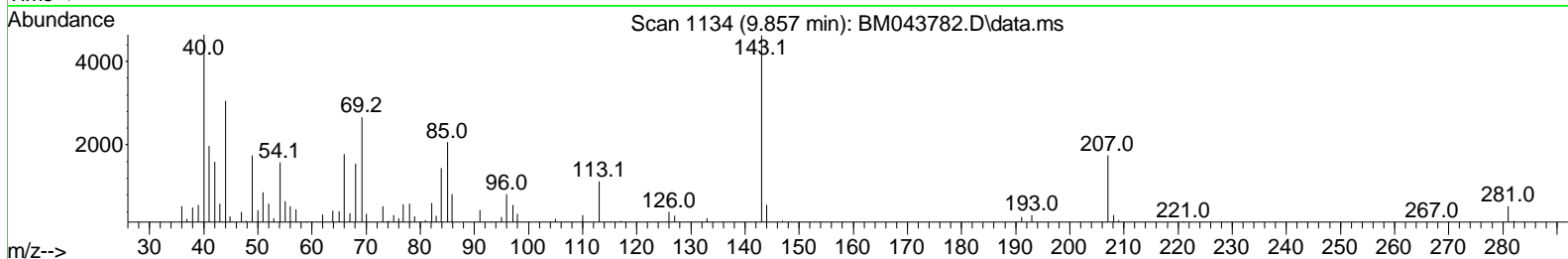
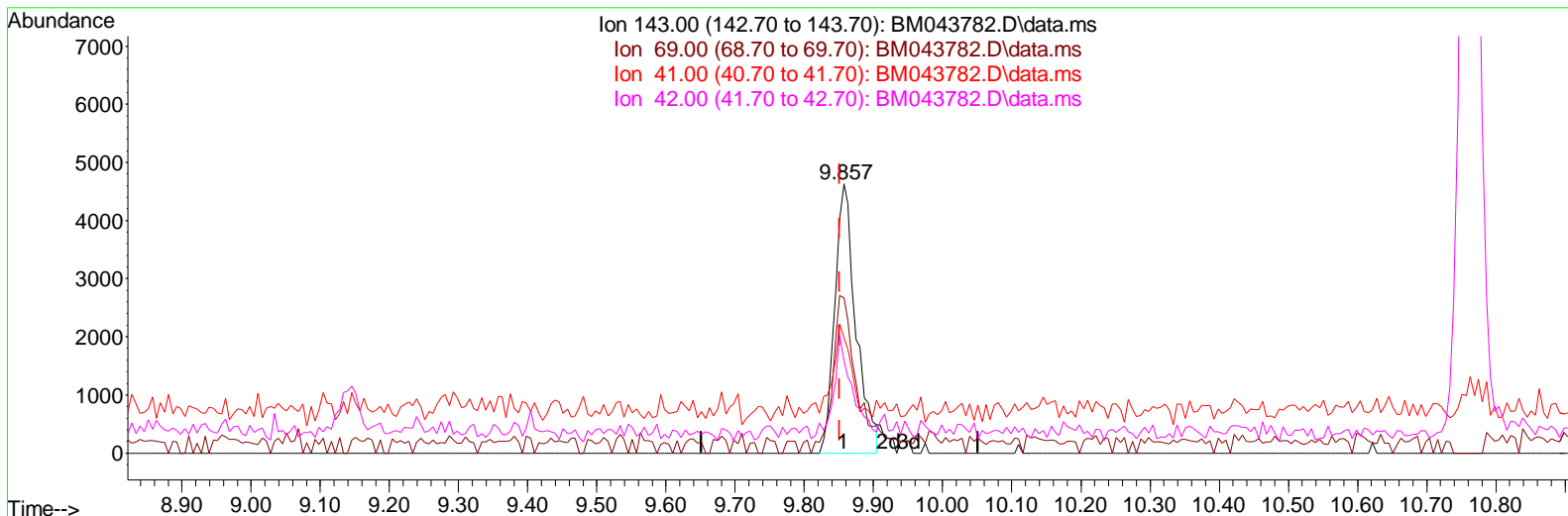
GCF97MEDL

**Manual IntegrationsAPPROVED**

Reviewed By :Yogesh Patel 01/08/2024

Supervised By :mohammad ahmed 01/08/2024

Quant Time: Jan 06 05:25:27 2024  
 Quant Method : Z:\svoasrv\HPCHEM1\BNA\_M\Methods\SFAM-EPA-BM121523.MA.M  
 Quant Title : SVOA CALIBRATION  
 QLast Update : Fri Dec 29 22:31:57 2023  
 Response via : Initial Calibration



TIC: BM043782.D\data.ms

(24) 2-Nitrophenol-d4 (S)

9.857min (+ 0.006) 0.83 ng/ul

response 9823

Ion	Exp%	Act%
143.00	100.00	100.00
69.00	55.80	57.58
41.00	27.70	42.85#
42.00	29.90	34.38

Data Path : Z:\svoasrv\HPCHEM1\BNA\_M\Data\BM010524\  
 Data File : BM043782.D  
 Acq On : 06 Jan 2024 04:56  
 Operator : MA/JU  
 Sample : 05952-14MEDL 20X  
 Misc :  
 ALS Vial : 28 Sample Multiplier: 1

**Instrument :**

BNA\_M

**ClientSampleId :**

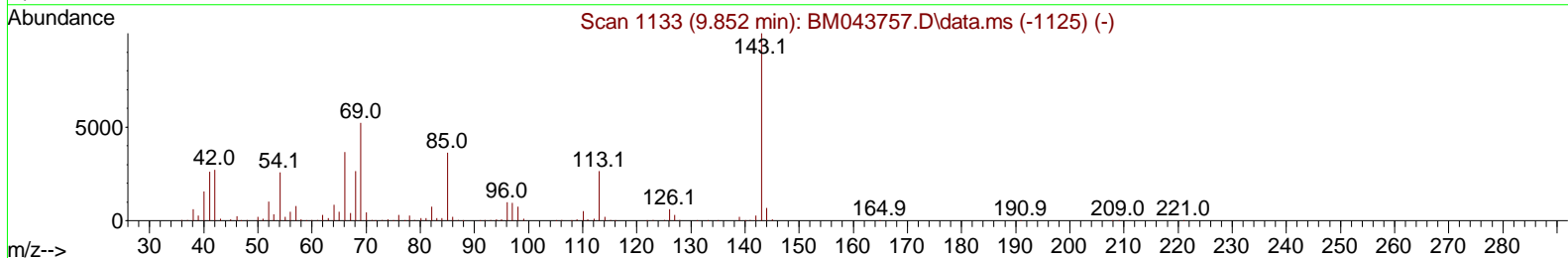
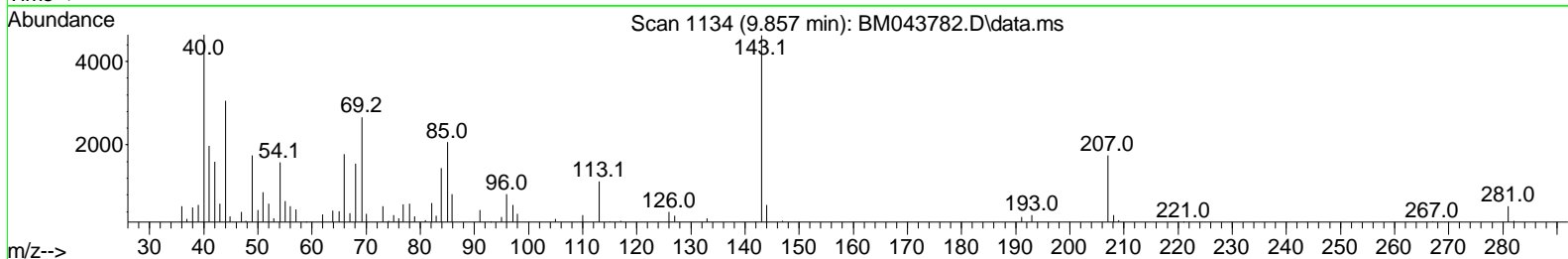
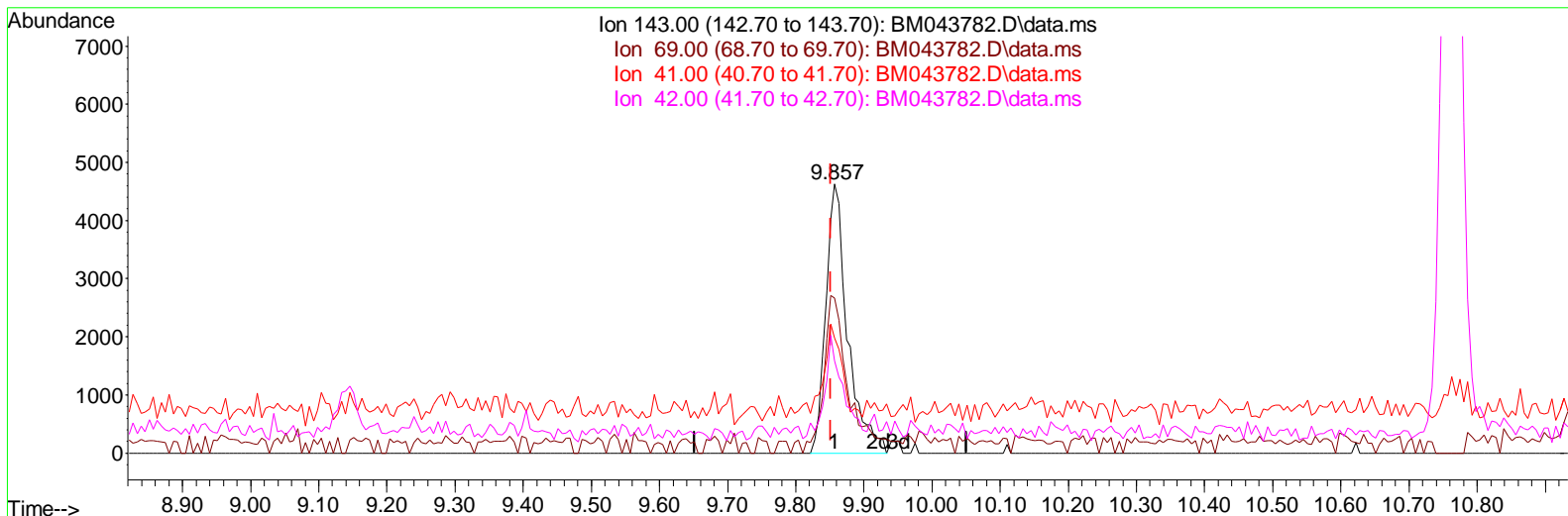
GCF97MEDL

**Manual IntegrationsAPPROVED**

Reviewed By :Yogesh Patel 01/08/2024

Supervised By :mohammad ahmed 01/08/2024

Quant Time: Jan 06 05:25:27 2024  
 Quant Method : Z:\svoasrv\HPCHEM1\BNA\_M\Methods\SFAM-EPA-BM121523.MA.M  
 Quant Title : SVOA CALIBRATION  
 QLast Update : Fri Dec 29 22:31:57 2023  
 Response via : Initial Calibration



TIC: BM043782.D\data.ms

(24) 2-Nitrophenol-d4 (S)

9.857min (+ 0.006) 0.87 ng/ul m

response 10263

Ion	Exp%	Act%
143.00	100.00	100.00
69.00	55.80	57.58
41.00	27.70	42.85#
42.00	29.90	34.38

Data Path : Z:\svoasrv\HPCHEM1\BNA\_M\Data\BM010524\  
 Data File : BM043782.D  
 Acq On : 06 Jan 2024 04:56  
 Operator : MA/JU  
 Sample : 05952-14MEDL 20X  
 Misc :  
 ALS Vial : 28 Sample Multiplier: 1

**Instrument :**

BNA\_M

**ClientSampleId :**

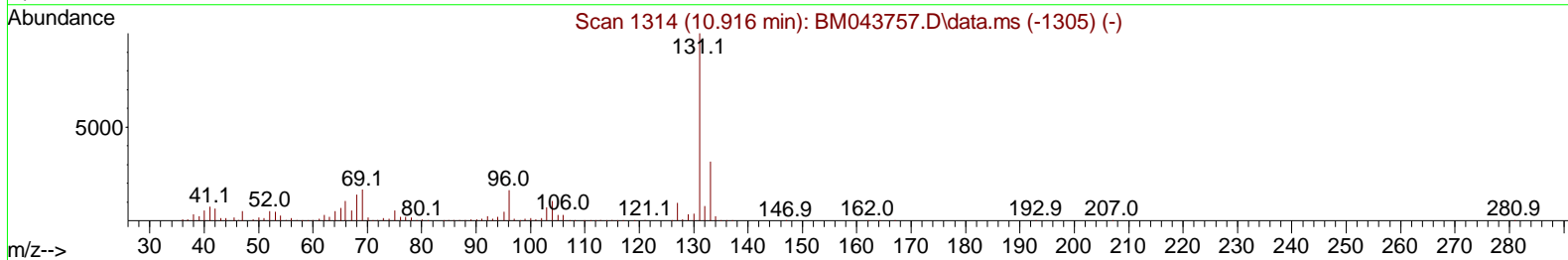
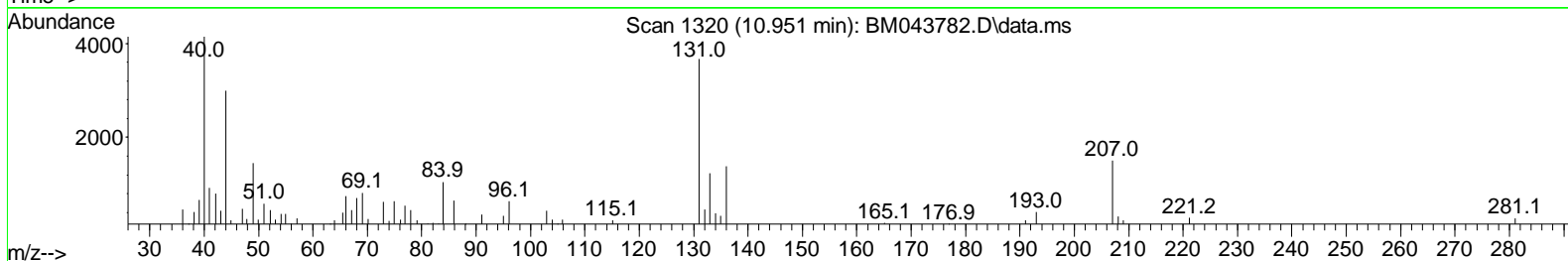
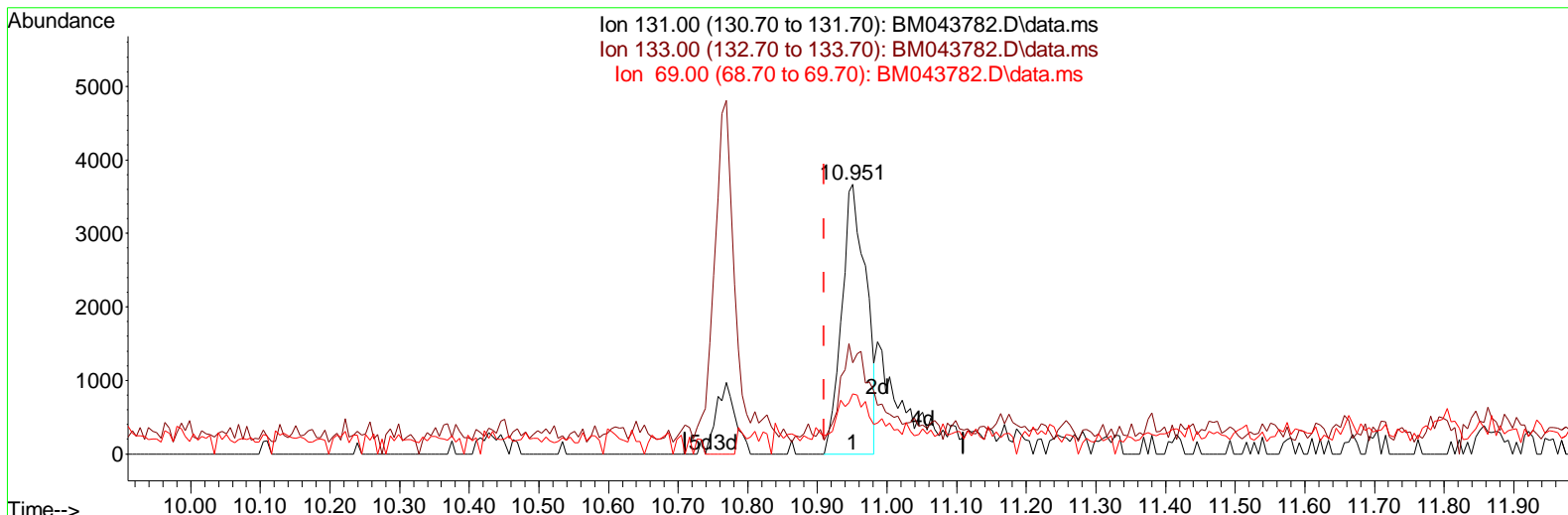
GCF97MEDL

**Manual Integrations APPROVED**

Reviewed By :Yogesh Patel 01/08/2024

Supervised By :mohammad ahmed 01/08/2024

Quant Time: Jan 06 05:25:27 2024  
 Quant Method : Z:\svoasrv\HPCHEM1\BNA\_M\Methods\SFAM-EPA-BM121523.MA.M  
 Quant Title : SVOA CALIBRATION  
 QLast Update : Fri Dec 29 22:31:57 2023  
 Response via : Initial Calibration



TIC: BM043782.D\data.ms

(31) 4-Chloroaniline-d4 (S)

10.951min (+ 0.041) 0.29 ng/ul

response 8874

Ion	Exp%	Act%
131.00	100.00	100.00
133.00	32.30	33.78
69.00	18.30	22.26#
0.00	0.00	0.00

Data Path : Z:\svoasrv\HPCHEM1\BNA\_M\Data\BM010524\  
 Data File : BM043782.D  
 Acq On : 06 Jan 2024 04:56  
 Operator : MA/JU  
 Sample : 05952-14MEDL 20X  
 Misc :  
 ALS Vial : 28 Sample Multiplier: 1

**Instrument :**

BNA\_M

**ClientSampleId :**

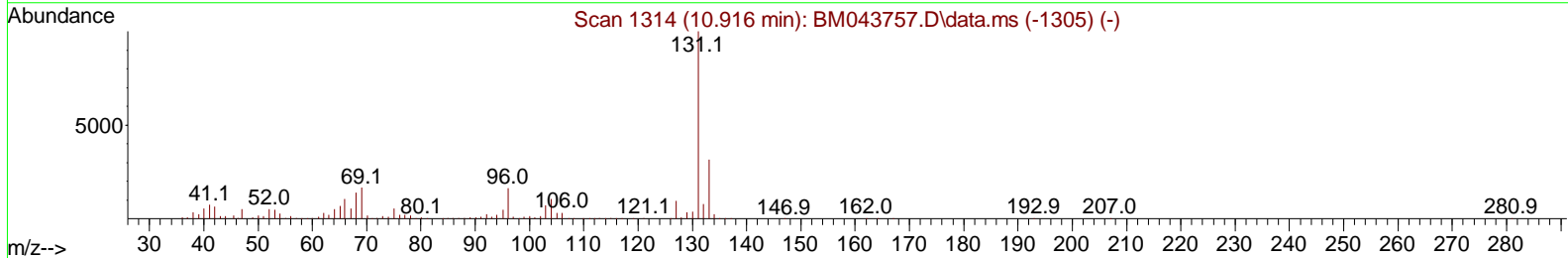
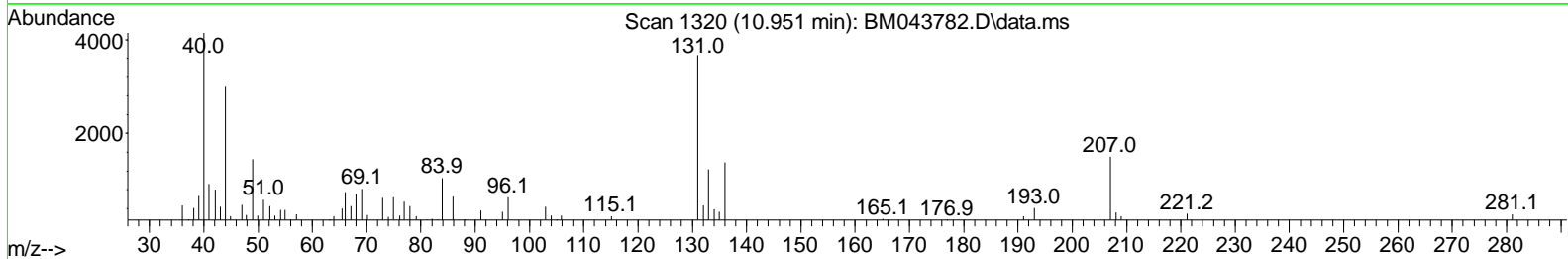
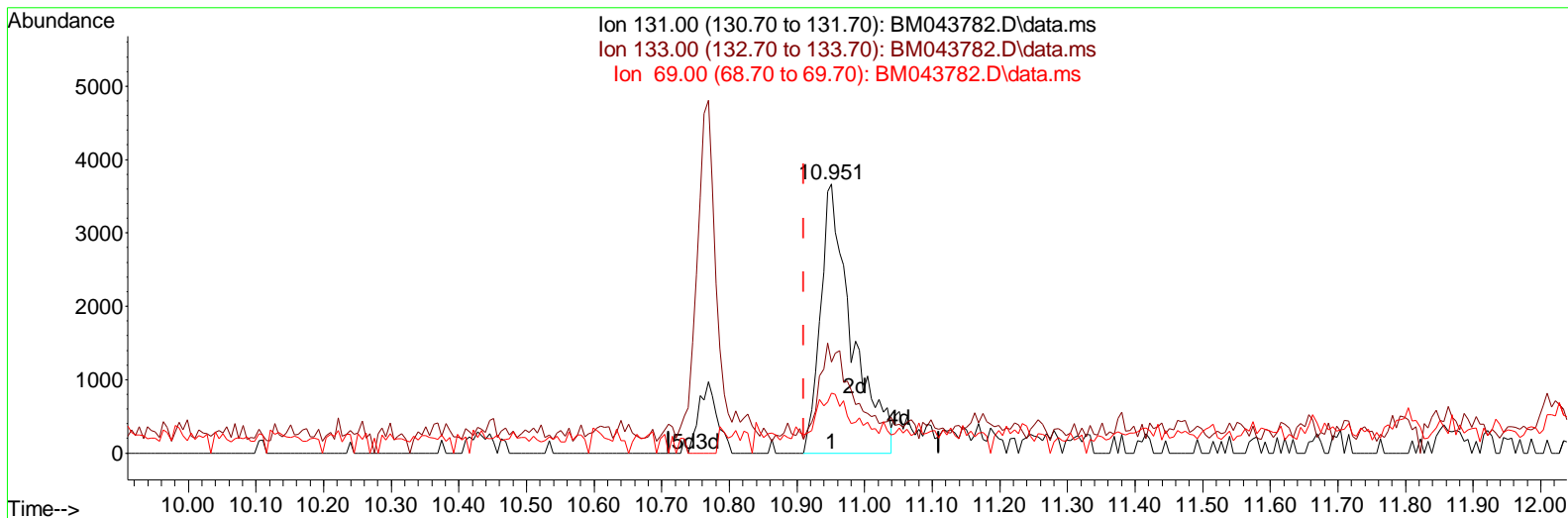
GCF97MEDL

**Manual Integrations APPROVED**

Reviewed By :Yogesh Patel 01/08/2024

Supervised By :mohammad ahmed 01/08/2024

Quant Time: Jan 06 05:25:27 2024  
 Quant Method : Z:\svoasrv\HPCHEM1\BNA\_M\Methods\SFAM-EPA-BM121523.MA.M  
 Quant Title : SVOA CALIBRATION  
 QLast Update : Fri Dec 29 22:31:57 2023  
 Response via : Initial Calibration



TIC: BM043782.D\data.ms

(31) 4-Chloroaniline-d4 (S)

10.951min (+ 0.041) 0.38 ng/ul m

response 11847

Ion	Exp%	Act%
131.00	100.00	100.00
133.00	32.30	33.78
69.00	18.30	22.26#
0.00	0.00	0.00

Data Path : Z:\svoasrv\HPCHEM1\BNA\_M\Data\BMO10524\  
 Data File : BMO43782.D  
 Acq On : 06 Jan 2024 04:56  
 Operator : MA/JU  
 Sample : 05952-14MEDL 20X  
 Misc :  
 ALS Vial : 28 Sample Multiplier: 1

**Instrument :**  
 BNA\_M  
**ClientSampleId :**  
 GCF97MEDL

**Manual Integrations APPROVED**

Reviewed By :Yogesh Patel 01/08/2024  
 Supervised By :mohammad ahmed 01/08/2024

Quant Time: Jan 06 05:27:14 2024  
 Quant Method : Z:\svoasrv\HPCHEM1\BNA\_M\Methods\SFAM-EPA-BM121523.MA.M  
 Quant Title : SVOA CALI BRATI ON  
 QLast Update : Fri Dec 29 22:31:57 2023  
 Response via : Initial Calibration

Compound	R.T.	QI on	Response	Conc	Units	Dev(Min)
<b>Internal Standards</b>						
1) 1,4-Dichlorobenzene-d4	7.951	152	303252	20.000	ng/ul	0.00
20) Naphthalene-d8	10.763	136	1186328	20.000	ng/ul	0.00
38) Acenaphthene-d10	14.592	164	688977	20.000	ng/ul	0.00
64) Phenanthrene-d10	17.345	188	1464444	20.000	ng/ul	0.00
79) Chrysene-d12	21.527	240	1312097	20.000	ng/ul	0.00
88) Perylene-d12	23.950	264	1517985	20.000	ng/ul	0.02
<b>System Monitoring Compounds</b>						
3) 1,4-Dioxane-d8	3.369	96	2161	0.232	ng/uL	0.00
4) Pyridine-d5	0.000	84	Od	0.000	ng/ul	
7) Phenol-d5	7.140	99	25594	0.742	ng/ul	0.02
9) Bis-(2-Chloroethyl)eth...	7.298	67	17855	0.817	ng/ul	0.00
11) 2-Chlorophenol-d4	7.487	132	22297	0.847	ng/ul	0.00
15) 4-Methylphenol-d8	8.687	113	18757m	0.701	ng/ul	0.02
21) Nitrobenzene-d5	9.145	128	9563	0.833	ng/ul	0.02
24) 2-Nitrophenol-d4	9.857	143	10263m	0.865	ng/ul	0.00
28) 2,4-Dichlorophenol-d3	10.428	165	16843	0.805	ng/ul	0.05
31) 4-Chloroaniline-d4	10.951	131	11847m	0.385	ng/ul	0.04
46) Dimethylphthalate-d6	14.021	166	63069	1.017	ng/ul	0.00
49) Acenaphthylene-d8	14.292	160	71032	0.965	ng/ul	0.00
54) 4-Nitrophenol-d4	0.000	143	Od	0.000	ng/ul	
60) Fluorene-d10	15.592	176	57352	1.118	ng/ul	0.00
65) 4,6-Dinitro-2-methylph...	0.000	200	Od	0.000	ng/ul	
73) Anthracene-d10	17.445	188	95936	1.168	ng/ul	0.00
81) Pyrene-d10	19.739	212	103453	0.999	ng/ul	0.01
92) Benzo(a)pyrene-d12	23.791	264	100715	1.075	ng/ul	0.02
<b>Target Compounds</b>						
58) 2,3,4,6-Tetrachlorophenol	15.227	232	27274	2.247	ng/ul #	97
71) Pentachlorophenol	16.998	266	1571701	130.795	ng/ul	99
82) Pyrene	19.762	202	246621	1.870	ng/ul	99

(#) = qualifier out of range (m) = manual integration (+) = signals summed

Data Path : Z:\svoasrv\HPCHEM1\BNA\_M\Data\BM010524\  
 Data File : BM043782.D  
 Acq On : 06 Jan 2024 04:56  
 Operator : MA/JU  
 Sample : 05952-14MEDL 20X  
 Misc :  
 ALS Vial : 28 Sample Multiplier: 1

**Instrument :**  
 BNA\_M  
**ClientSampleId :**  
 GCF97MEDL

**Manual Integrations APPROVED**

Reviewed By :Yogesh Patel 01/08/2024  
 Supervised By :mohammad ahmed 01/08/2024

Quant Time: Jan 06 05:27:14 2024  
 Quant Method : Z:\svoasrv\HPCHEM1\BNA\_M\Methods\SFAM-EPA-BM121523.MA.M  
 Quant Title : SVOA CALIBRATION  
 QLast Update : Fri Dec 29 22:31:57 2023  
 Response via : Initial Calibration

