

Data Path : Z:\svoasrv\HPCHEM1\BNA_M\Data\BM010524\
 Data File : BM043775.D
 Acq On : 06 Jan 2024 00:42
 Operator : MA/JU
 Sample : 05919-14MEDL 20X
 Misc :
 ALS Vial : 21 Sample Multiplier: 1

Instrument :
 BNA_M
ClientSampleId :
 GCF46MEDL

Manual Integrations
APPROVED
 Reviewed By :Yogesh Patel 01/08/2024
 Supervised By :mohammad ahmed 01/08/2024

Quant Time: Jan 06 02:53:31 2024
 Quant Method : Z:\svoasrv\HPCHEM1\BNA_M\Methods\SFAM-EPA-BM121523.MA.M
 Quant Title : SVOA CALIBRATION
 QLast Update : Fri Dec 29 22:31:57 2023
 Response via : Initial Calibration

Compound	R.T.	QIon	Response	Conc	Units	Dev(Min)	Qvalue
Internal Standards							
1) 1,4-Dichlorobenzene-d4	7.957	152	279796	20.000	ng/ul	0.00	
20) Naphthalene-d8	10.763	136	1098232	20.000	ng/ul	0.00	
38) Acenaphthene-d10	14.598	164	634225	20.000	ng/ul	0.00	
64) Phenanthrene-d10	17.351	188	1292405	20.000	ng/ul	0.01	
79) Chrysene-d12	21.533	240	1166687	20.000	ng/ul	0.01	
88) Perylene-d12	23.950	264	1365292	20.000	ng/ul	0.02	
System Monitoring Compounds							
3) 1,4-Dioxane-d8	0.000	96	0d	0.000	ng/uL		
4) Pyridine-d5	0.000	84	0d	0.000	ng/ul		
7) Phenol-d5	7.139	99	29826	0.937	ng/ul	0.02	
9) Bis-(2-Chloroethyl)eth...	7.298	67	20534	1.019	ng/ul	0.00	
11) 2-Chlorophenol-d4	7.486	132	24716	1.017	ng/ul	0.00	
15) 4-Methylphenol-d8	8.686	113	16997m	0.688	ng/ul	0.02	
21) Nitrobenzene-d5	9.139	128	11116	1.046	ng/ul	0.01	
24) 2-Nitrophenol-d4	9.857	143	12412	1.131	ng/ul	0.00	
28) 2,4-Dichlorophenol-d3	10.416	165	21752m	1.122	ng/ul	0.03	
31) 4-Chloroaniline-d4	0.000	131	0d	0.000	ng/ul		
46) Dimethylphthalate-d6	14.021	166	74747	1.309	ng/ul	0.00	
49) Acenaphthylene-d8	14.292	160	85231	1.258	ng/ul	0.00	
54) 4-Nitrophenol-d4	0.000	143	0d	0.000	ng/ul		
60) Fluorene-d10	15.592	176	67002	1.419	ng/ul	0.00	
65) 4,6-Dinitro-2-methylph...	15.739	200	6943	0.812	ng/ul	0.03	
73) Anthracene-d10	17.445	188	100973	1.393	ng/ul	0.00	
81) Pyrene-d10	19.739	212	112219	1.218	ng/ul	0.01	
92) Benzo(a)pyrene-d12	23.791	264	106754	1.267	ng/ul	0.02	
Target Compounds							
58) 2,3,4,6-Tetrachlorophenol	15.233	232	67007	5.997	ng/ul	92	
71) Pentachlorophenol	17.003	266	2155841	203.288	ng/ul	99	
72) Phenanthrene	17.392	178	146214	1.669	ng/ul	98	

(#) = qualifier out of range (m) = manual integration (+) = signals summed

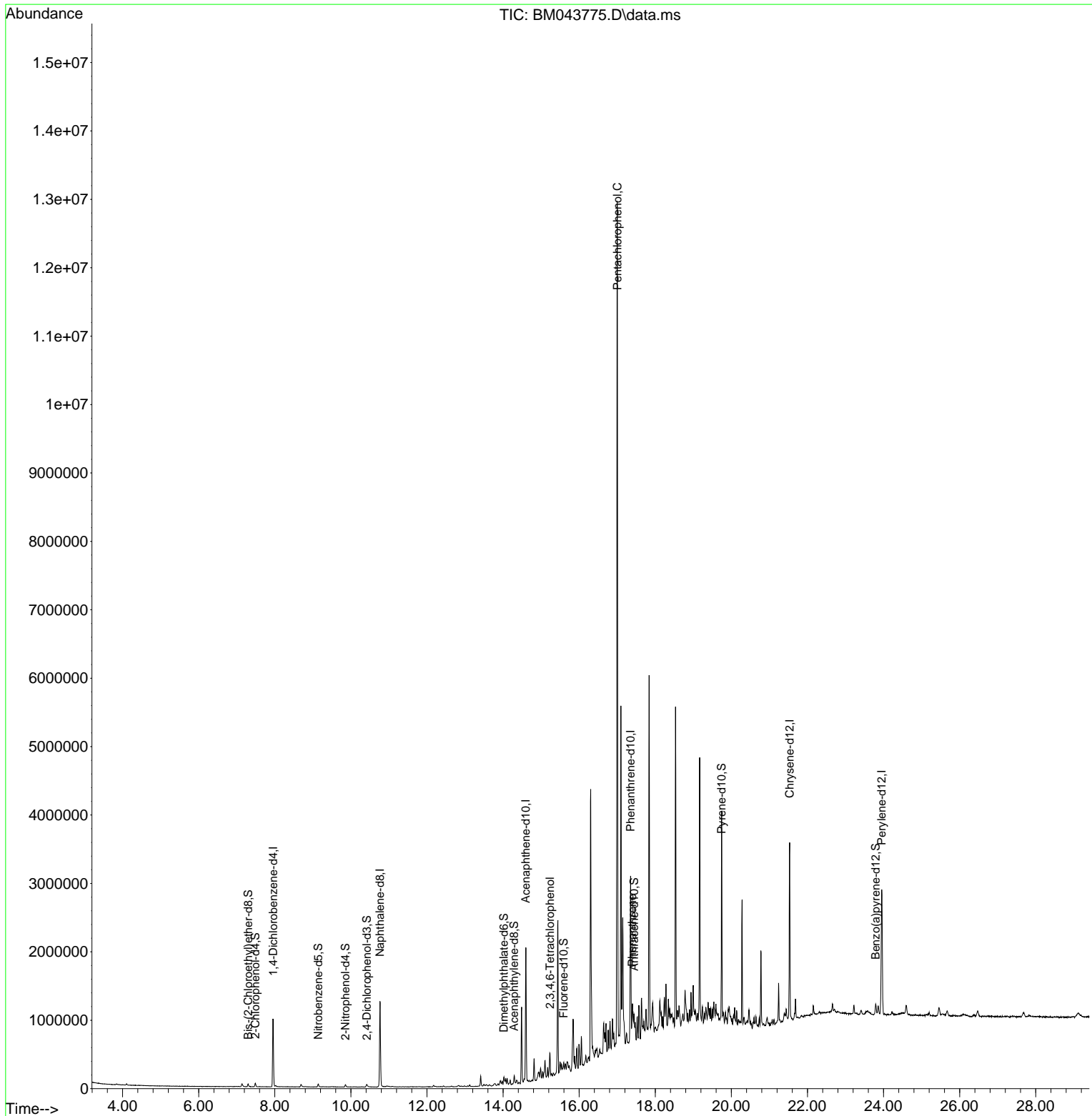
Data Path : Z:\svoasrv\HPCHEM1\BNA_M\Data\BM010524\
Data File : BM043775.D
Acq On : 06 Jan 2024 00:42
Operator : MA/JU
Sample : 05919-14MEDL 20X
Misc :
ALS Vial : 21 Sample Multiplier: 1

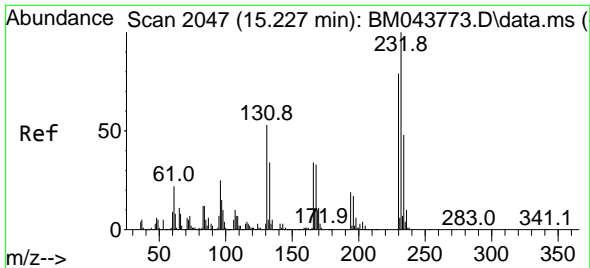
Instrument :
BNA_M
ClientSampleId :
GCF46MEDL

Quant Time: Jan 06 02:53:31 2024
Quant Method : Z:\svoasrv\HPCHEM1\BNA_M\Methods\SFAM-EPA-BM121523.MA.M
Quant Title : SVOA CALIBRATION
QLast Update : Fri Dec 29 22:31:57 2023
Response via : Initial Calibration

Manual Integrations
APPROVED

Reviewed By :Yogesh Patel 01/08/2024
Supervised By :mohammad ahmed 01/08/2024





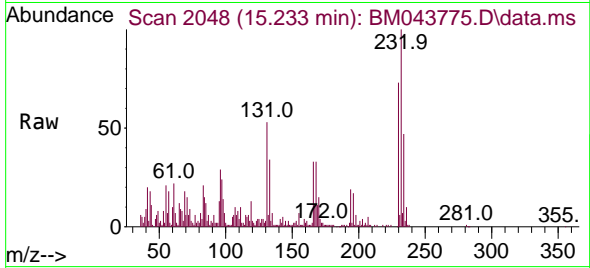
#58
 2,3,4,6-Tetrachlorophenol
 Concen: 5.997 ng/ul
 RT: 15.233 min Scan# 2048
 Delta R.T. 0.017 min
 Lab File: BM043775.D
 Acq: 06 Jan 2024 00:42

Instrument :

BNA_M

ClientSampleId :

GCF46MEDL



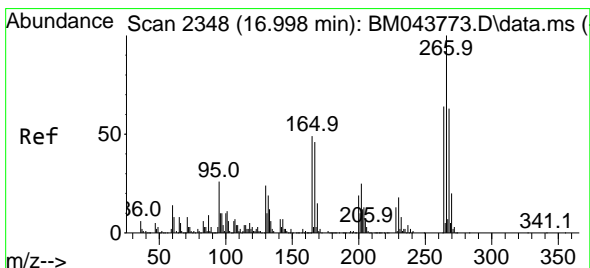
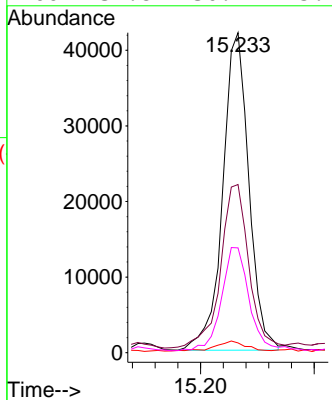
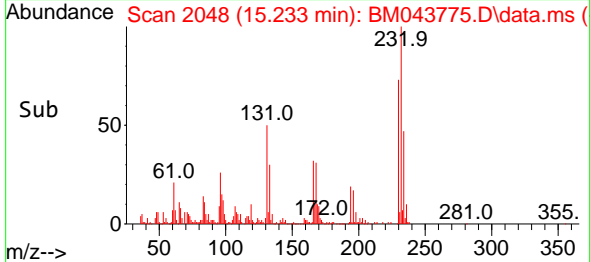
Tgt Ion:232 Resp: 6700

Ion	Ratio	Lower	Upper
232	100		
131	52.6	47.4	71.0
130	3.0	2.4	3.6
166	32.8	30.1	45.1

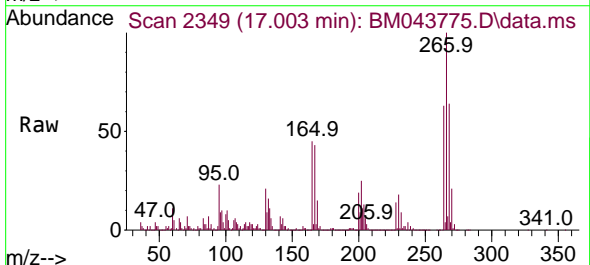
Manual Integrations

APPROVED

Reviewed By :Yogesh Patel 01/08/2024
 Supervised By :mohammad ahmed 01/08/2024

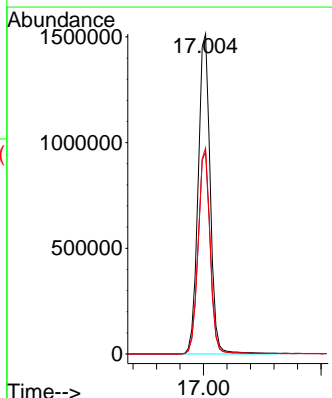
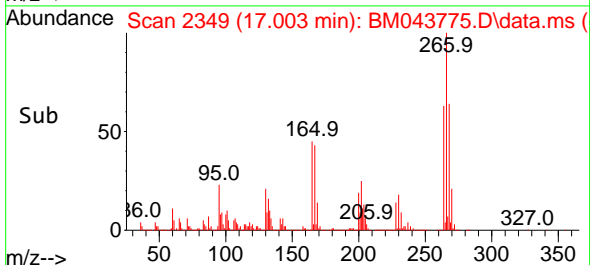


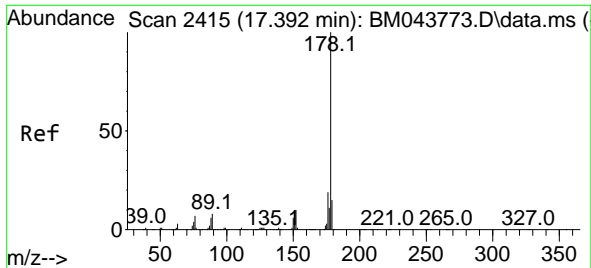
#71
 Pentachlorophenol
 Concen: 203.288 ng/ul
 RT: 17.003 min Scan# 2349
 Delta R.T. 0.023 min
 Lab File: BM043775.D
 Acq: 06 Jan 2024 00:42



Tgt Ion:266 Resp: 2155841

Ion	Ratio	Lower	Upper
266	100		
264	63.2	49.9	74.9
268	64.4	51.0	76.6





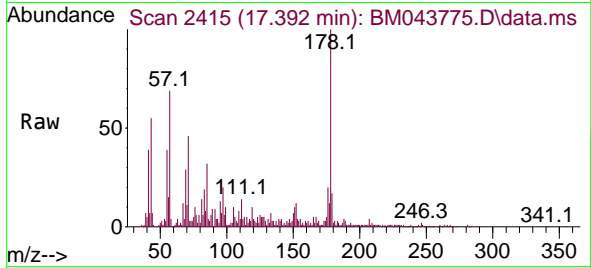
#72
 Phenanthrene
 Concen: 1.669 ng/ul
 RT: 17.392 min Scan# 2415
 Delta R.T. 0.011 min
 Lab File: BM043775.D
 Acq: 06 Jan 2024 00:42

Instrument :

BNA_M

Client Sample Id :

GCF46MEDL



Tgt Ion:178 Resp: 146214
 Ion Ratio Lower Upper
 178 100
 179 16.8 12.2 18.4
 176 19.9 15.5 23.3

Manual Integrations

APPROVED

Reviewed By :Yogesh Patel 01/08/2024

Supervised By :mohammad ahmed 01/08/2024

