

Data Path : Z:\svoasrv\HPCHEM1\BNA_M\Data\BM010524\
 Data File : BM043779.D
 Acq On : 06 Jan 2024 03:07
 Operator : MA/JU
 Sample : 05952-03MEDL 5X
 Misc :
 ALS Vial : 25 Sample Multiplier: 1

Instrument :
 BNA_M
ClientSampleId :
 GCF88MEDL

Quant Time: Jan 06 03:46:02 2024
 Quant Method : Z:\svoasrv\HPCHEM1\BNA_M\Methods\SFAM-EPA-BM121523.MA.M
 Quant Title : SVOA CALIBRATION
 QLast Update : Fri Dec 29 22:31:57 2023
 Response via : Initial Calibration

Manual Integrations
APPROVED
 Reviewed By :Yogesh Patel 01/08/2024
 Supervised By :mohammad ahmed 01/08/2024

Compound	R.T.	QIon	Response	Conc	Units	Dev(Min)
Internal Standards						
1) 1,4-Dichlorobenzene-d4	7.951	152	332869	20.000	ng/u1	0.00
20) Naphthalene-d8	10.763	136	1310529	20.000	ng/u1	0.00
38) Acenaphthene-d10	14.598	164	736031	20.000	ng/u1	0.00
64) Phenanthrene-d10	17.345	188	1521504	20.000	ng/u1	0.00
79) Chrysene-d12	21.527	240	1360835	20.000	ng/u1	0.00
88) Perylene-d12	23.950	264	1582628	20.000	ng/u1	0.02
System Monitoring Compounds						
3) 1,4-Dioxane-d8	3.363	96	6656	0.650	ng/uL	0.00
4) Pyridine-d5	3.816	84	31990m	1.085	ng/u1	0.03
7) Phenol-d5	7.134	99	113485	2.997	ng/u1	0.02
9) Bis-(2-Chloroethyl)eth...	7.292	67	75032	3.129	ng/u1	0.00
11) 2-Chlorophenol-d4	7.487	132	93531	3.235	ng/u1	0.00
15) 4-Methylphenol-d8	8.681	113	83989	2.858	ng/u1	0.01
21) Nitrobenzene-d5	9.133	128	41564	3.278	ng/u1	0.00
24) 2-Nitrophenol-d4	9.857	143	44469	3.394	ng/u1	0.00
28) 2,4-Dichlorophenol-d3	10.404	165	78183	3.381	ng/u1	0.02
31) 4-Chloroaniline-d4	10.927	131	88922	2.613	ng/u1	0.02
46) Dimethylphthalate-d6	14.021	166	253785	3.830	ng/u1	0.00
49) Acenaphthylene-d8	14.292	160	298533	3.798	ng/u1	0.00
54) 4-Nitrophenol-d4	14.845	143	35595m	2.838	ng/u1	0.05
60) Fluorene-d10	15.592	176	228342	4.168	ng/u1	0.00
65) 4,6-Dinitro-2-methylph...	15.733	200	22678m	2.254	ng/u1	0.02
73) Anthracene-d10	17.445	188	351688	4.122	ng/u1	0.00
81) Pyrene-d10	19.739	212	400036	3.723	ng/u1	0.01
92) Benzo(a)pyrene-d12	23.791	264	404543	4.142	ng/u1	0.02
Target Compounds						
71) Pentachlorophenol	16.998	266	551832	44.200	ng/u1	99

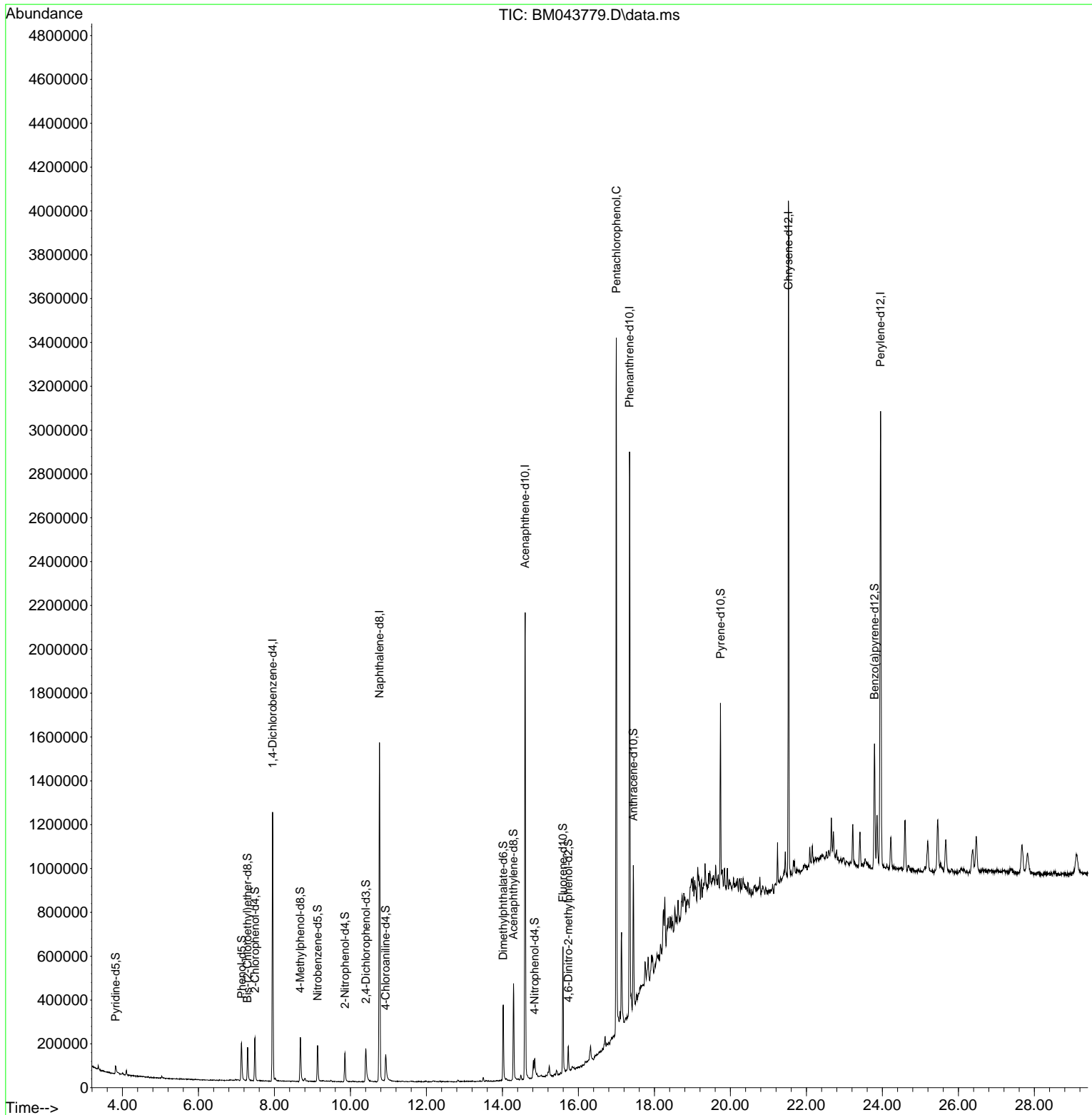
(#) = qualifier out of range (m) = manual integration (+) = signals summed

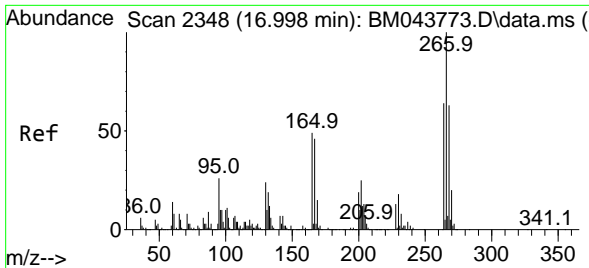
Data Path : Z:\svoasrv\HPCHEM1\BNA_M\Data\BM010524\
 Data File : BM043779.D
 Acq On : 06 Jan 2024 03:07
 Operator : MA/JU
 Sample : 05952-03MEDL 5X
 Misc :
 ALS Vial : 25 Sample Multiplier: 1

Instrument :
 BNA_M
ClientSampleId :
 GCF88MEDL

Quant Time: Jan 06 03:46:02 2024
 Quant Method : Z:\svoasrv\HPCHEM1\BNA_M\Methods\SFAM-EPA-BM121523.MA.M
 Quant Title : SVOA CALIBRATION
 QLast Update : Fri Dec 29 22:31:57 2023
 Response via : Initial Calibration

Manual Integrations
APPROVED
 Reviewed By :Yogesh Patel 01/08/2024
 Supervised By :mohammad ahmed 01/08/2024





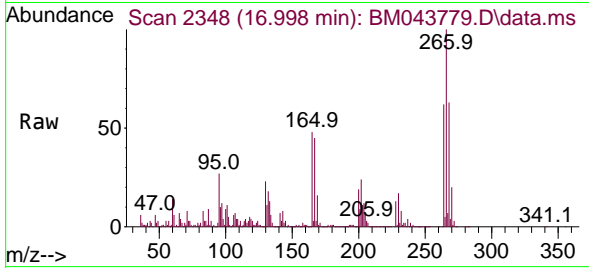
#71
 Pentachlorophenol
 Concen: 44.200 ng/ul
 RT: 16.998 min Scan# 21
 Delta R.T. 0.017 min
 Lab File: BM043779.D
 Acq: 06 Jan 2024 03:07

Instrument :

BNA_M

ClientSampleId :

GCF88MEDL



Tgt Ion:266 Resp: 55183
 Ion Ratio Lower Upper
 266 100
 264 62.4 49.9 74.9
 268 62.5 51.0 76.6

Manual Integrations

APPROVED

Reviewed By :Yogesh Patel 01/08/2024

Supervised By :mohammad ahmed 01/08/2024

