

Data Path : Z:\HPCHEM1\BNA\_M\Data\BM010815\  
 Data File : BM000152.D  
 Acq On : 08 Jan 2015 20:52  
 Operator : TP/IZ  
 Sample : MDL-07-W  
 Misc : MDL-WATER-0.15PPM-SIM  
 ALS Vial : 32 Sample Multiplier: 1

Quant Time: Jan 09 00:55:20 2015

Quant Method : Z:\HPCHEM1\BNA\_M\METHODS\SOM02.2-EPA-SIM-BM010715.M

Quant Title : ASP BNA STANDARDS FOR 5 POINT CALIBRATION

QLast Update : Thu Jan 08 10:41:47 2015

Response via : Initial Calibration

Internal Standards	R.T.	QIon	Response	Conc	Units	Dev(Min)
1) 1,4-Dichlorobenzene-d4	7.84	152	2677	0.40	ng/ul	0.00
2) Naphthalene-d8	10.64	136	8818	0.40	ng/ul	0.00
6) Acenaphthene-d10	14.47	164	5415	0.40	ng/ul	0.00
10) Phenanthrene-d10	17.23	188	10097	0.40	ng/ul	0.02
16) Chrysene-d12	21.41	240	8745	0.40	ng/ul	0.00
20) Perylene-d12	23.70	264	7990	0.40	ng/ul	0.00

#### System Monitoring Compounds

4) 2-Methylnaphthalene-d10	12.22	152	4066	0.35	ng/ul	0.00
14) Fluoranthene-d10	19.25	212	6695	0.31	ng/ul	0.00

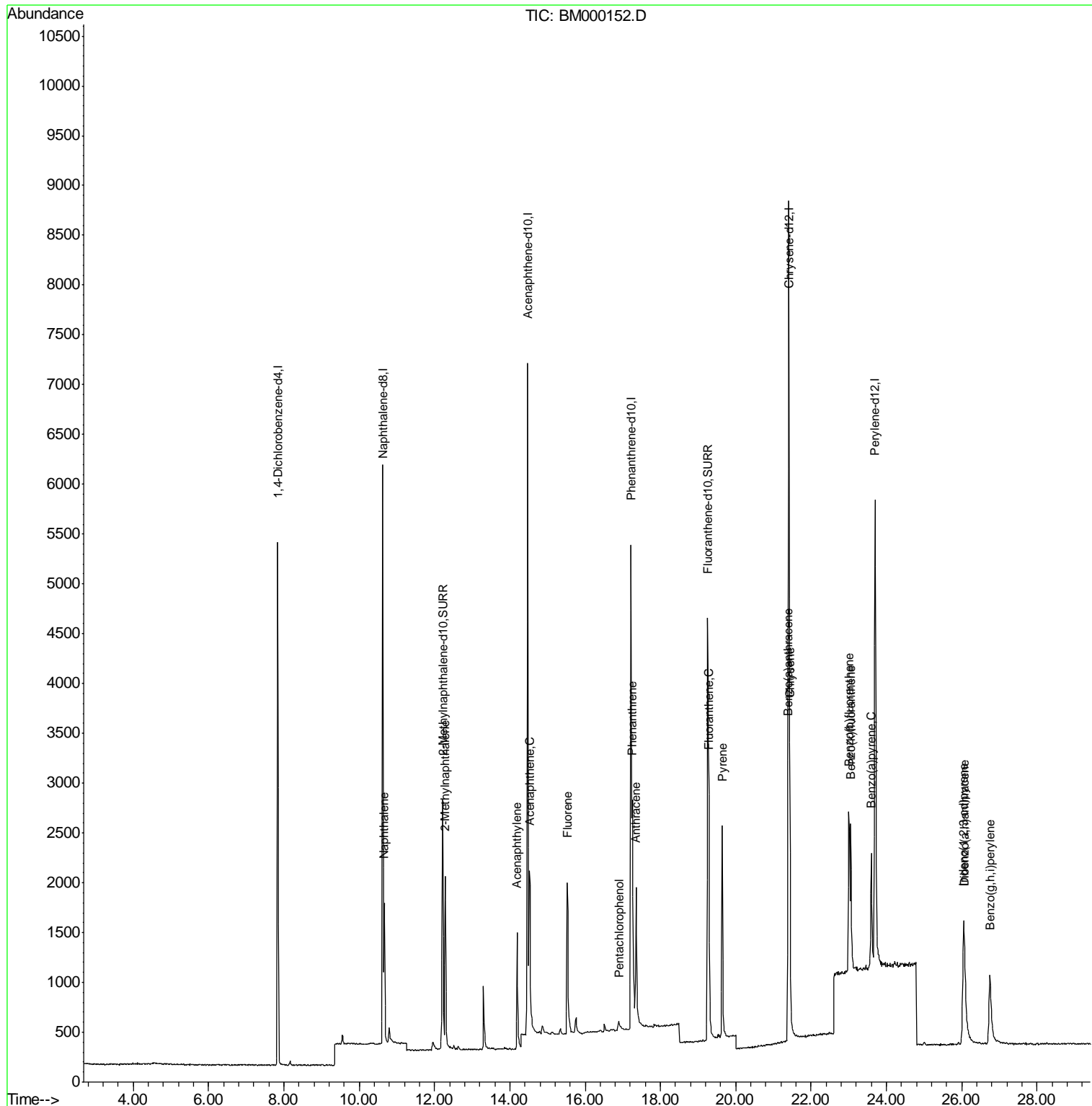
#### Target Compounds

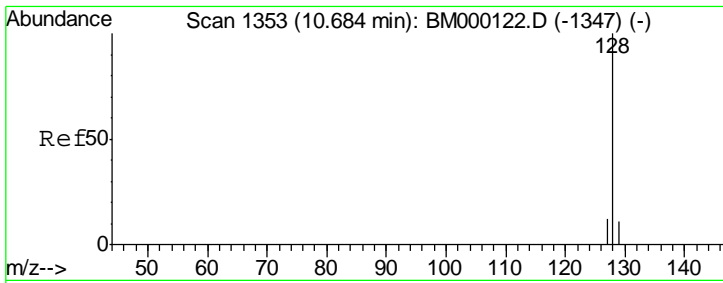
						Qvalue
3) Naphthalene	10.67	128	2057	0.09	ng/ul#	91
5) 2-Methylnaphthalene	12.28	142	1335	0.09	ng/ul	99
7) Acenaphthylene	14.20	152	2098	0.08	ng/ul	94
8) Acenaphthene	14.52	153	1403	0.08	ng/ul#	80
9) Fluorene	15.52	166	1614	0.08	ng/ul#	90
11) Pentachlorophenol	16.90	266	225	0.14	ng/ul	89
12) Phenanthrene	17.26	178	2512	0.08	ng/ul#	92
13) Anthracene	17.35	178	2479	0.08	ng/ul#	90
15) Fluoranthene	19.28	202	2996	0.09	ng/ul	93
17) Pyrene	19.65	202	2964	0.08	ng/ul#	94
18) Benzo(a)anthracene	21.39	228	2347	0.08	ng/ul	94
19) Chrysene	21.44	228	2688	0.09	ng/ul	96
21) Benzo(b)fluoranthene	23.00	252	2679	0.09	ng/ul	80
22) Benzo(k)fluoranthene	23.05	252	2304	0.08	ng/ul#	79
23) Benzo(a)pyrene	23.60	252	2354	0.08	ng/ul#	69
24) Indeno(1,2,3-cd)pyrene	26.05	276	2679	0.08	ng/ul	96
25) Dibenzo(a,h)anthracene	26.07	278	2099	0.08	ng/ul#	70
26) Benzo(g,h,i)perylene	26.75	276	2349	0.08	ng/ul#	85

(#) = qualifier out of range (m) = manual integration (+) = signals summed

Data Path : Z:\HPCHEM1\BNA\_M\Data\BM010815\  
 Data File : BM000152.D  
 Acq On : 08 Jan 2015 20:52  
 Operator : TP/IZ  
 Sample : MDL-07-W  
 Misc : MDL-WATER-0.15PPM-SIM  
 ALS Vial : 32 Sample Multiplier: 1

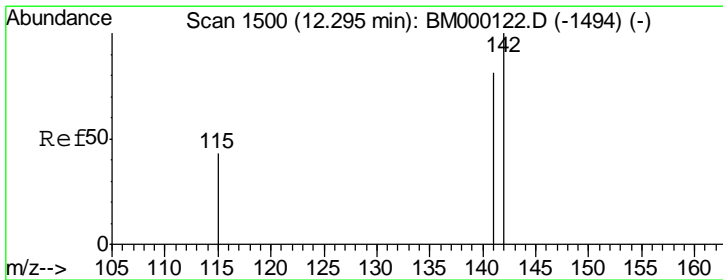
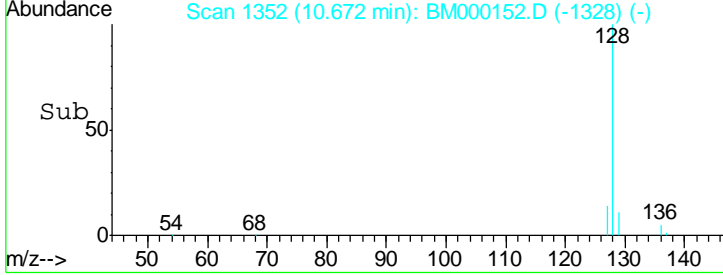
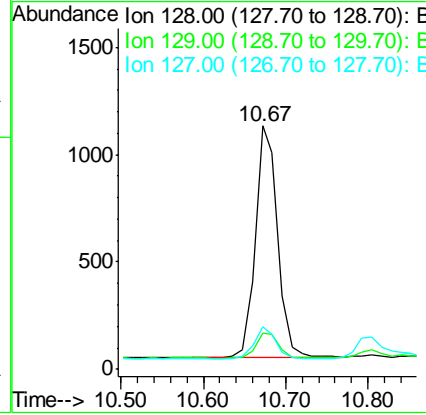
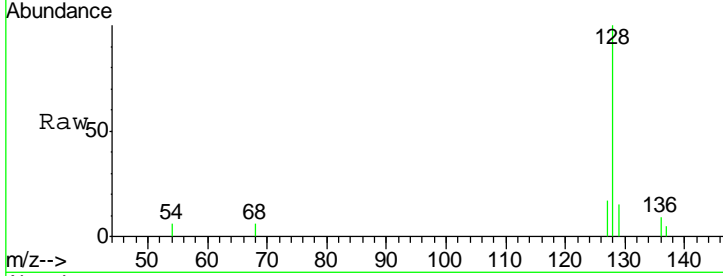
Quant Time: Jan 09 00:55:20 2015  
 Quant Method : Z:\HPCHEM1\BNA\_M\METHODS\SOM02.2-EPA-SIM-BM010715.M  
 Quant Title : ASP BNA STANDARDS FOR 5 POINT CALIBRATION  
 QLast Update : Thu Jan 08 10:41:47 2015  
 Response via : Initial Calibration





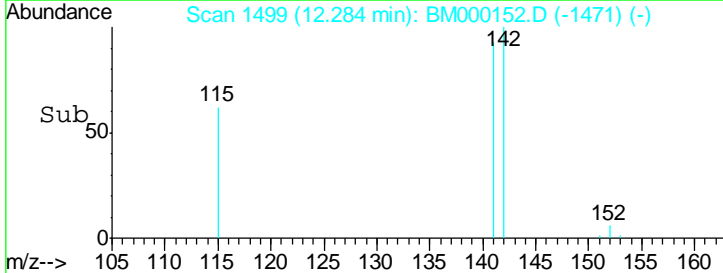
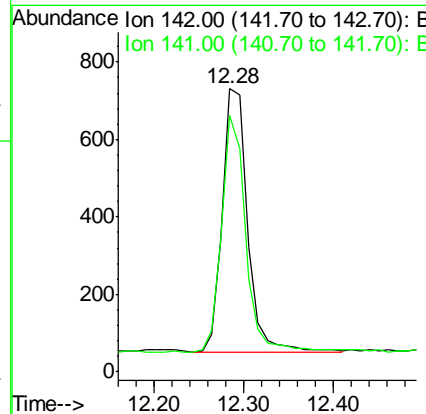
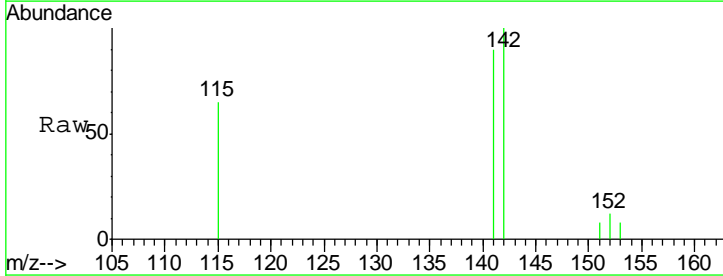
#3  
 Naphthalene  
 Concen: 0.09 ng/ul  
 RT: 10.67 min Scan# 1352  
 Delta R.T. -0.01 min  
 Lab File: BM000152.D  
 Acq: 08 Jan 2015 20:52

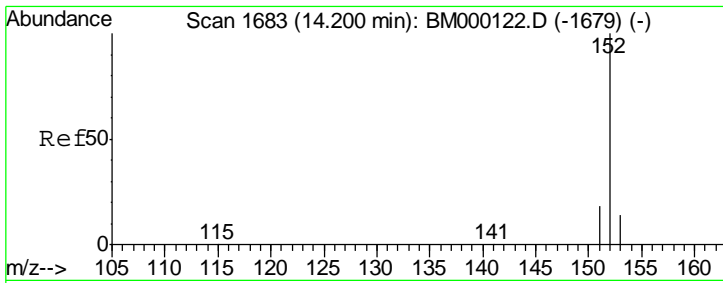
Tgt Ion	Resp	Lower	Upper
128	100		
129	14.8	9.5	14.3#
127	17.4	10.4	15.6#



#5  
 2-Methylnaphthalene  
 Concen: 0.09 ng/ul  
 RT: 12.28 min Scan# 1499  
 Delta R.T. -0.01 min  
 Lab File: BM000152.D  
 Acq: 08 Jan 2015 20:52

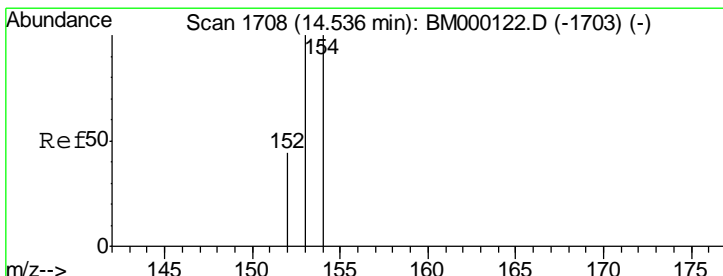
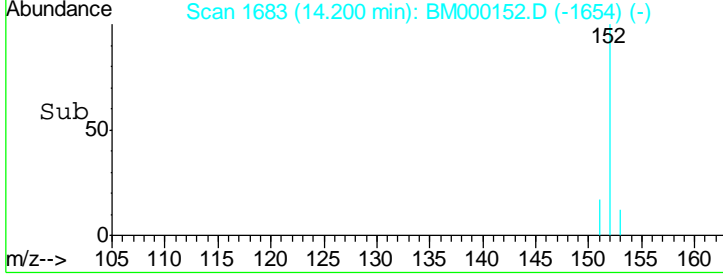
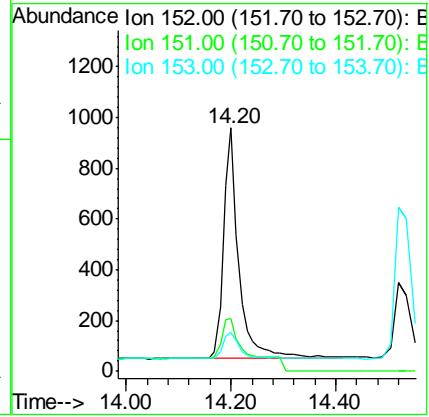
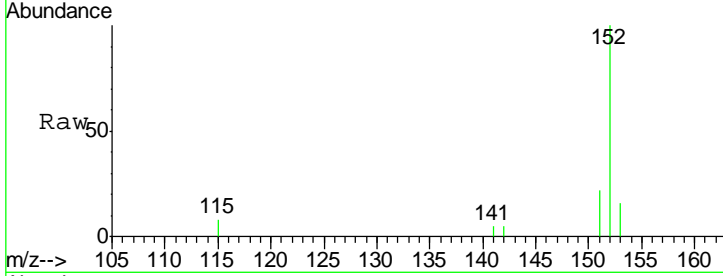
Tgt Ion	Resp	Lower	Upper
142	100		
141	85.2	68.9	103.3





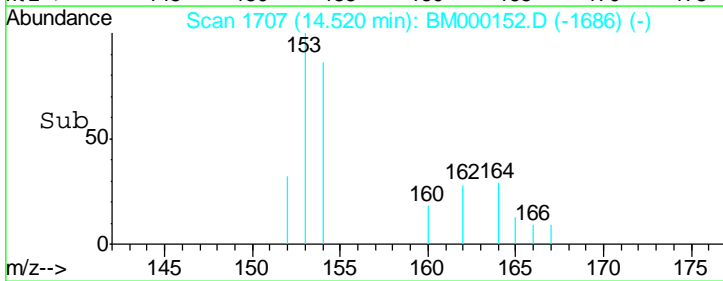
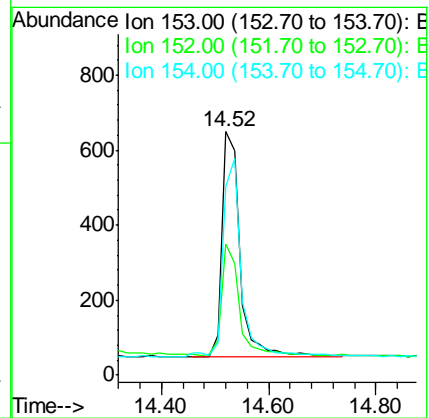
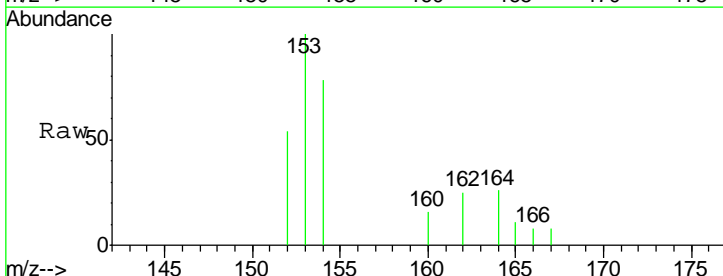
#7  
 Acenaphthylene  
 Concen: 0.08 ng/ul  
 RT: 14.20 min Scan# 1683  
 Delta R.T. -0.00 min  
 Lab File: BM000152.D  
 Acq: 08 Jan 2015 20:52

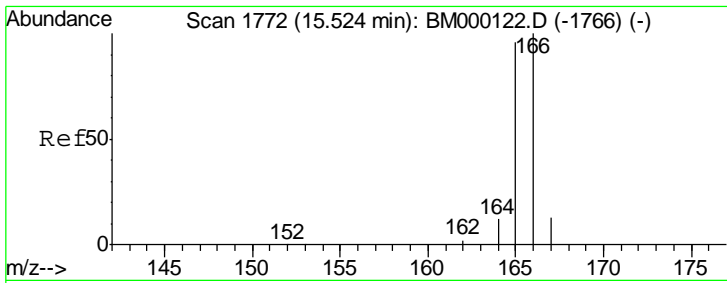
Tgt Ion	Resp	Lower	Upper
152	100		
151	21.7	15.4	23.2
153	16.2	11.0	16.4



#8  
 Acenaphthene  
 Concen: 0.08 ng/ul  
 RT: 14.52 min Scan# 1707  
 Delta R.T. -0.02 min  
 Lab File: BM000152.D  
 Acq: 08 Jan 2015 20:52

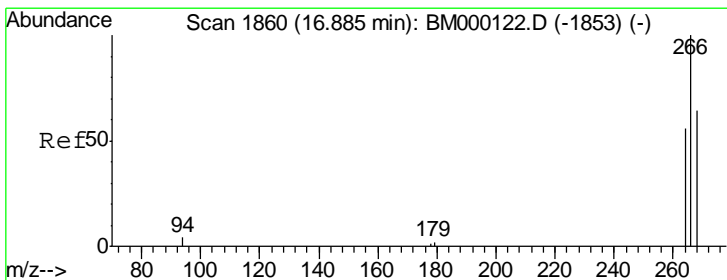
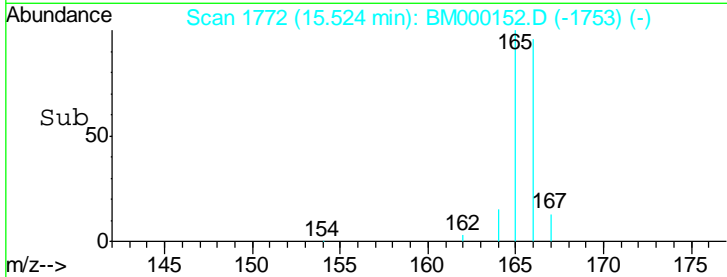
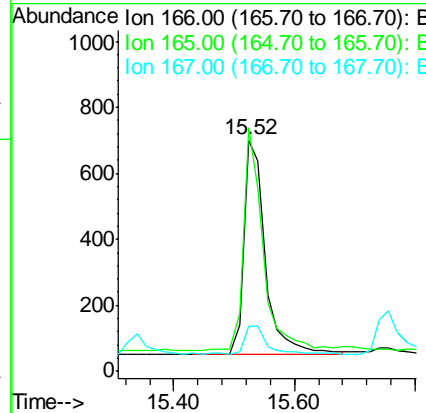
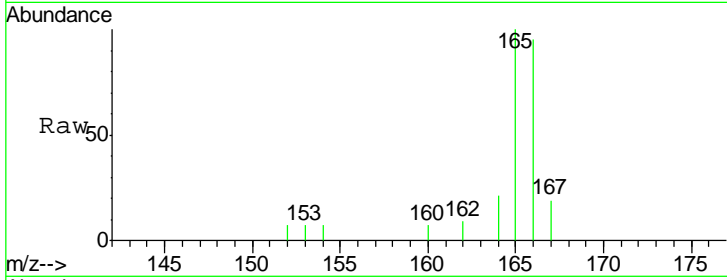
Tgt Ion	Resp	Lower	Upper
153	100		
152	53.9	35.8	53.6#
154	77.7	79.9	119.9#





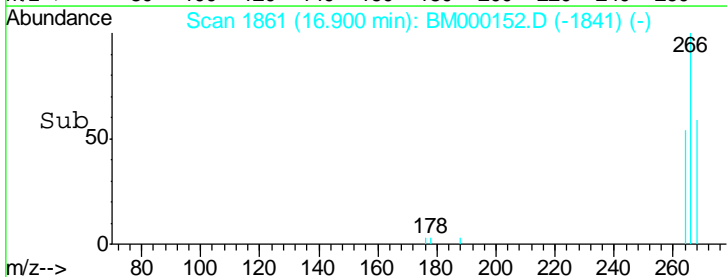
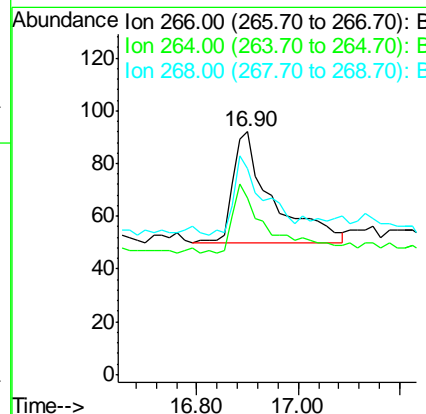
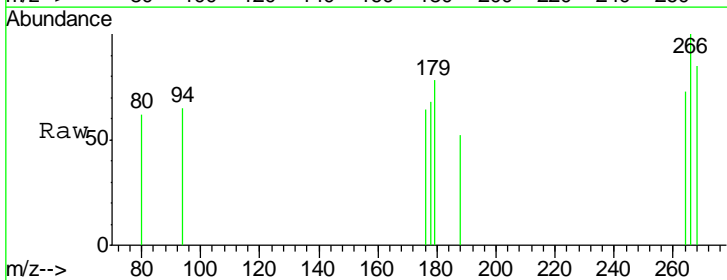
#9  
 Fluorene  
 Concen: 0.08 ng/ul  
 RT: 15.52 min Scan# 1772  
 Delta R.T. -0.00 min  
 Lab File: BM000152.D  
 Acq: 08 Jan 2015 20:52

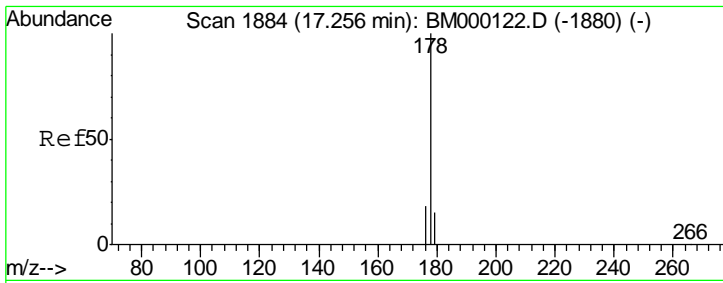
Tgt Ion	Resp	Lower	Upper
166	100		
165	105.3	77.0	115.4
167	19.7	11.0	16.6#



#11  
 Pentachlorophenol  
 Concen: 0.14 ng/ul  
 RT: 16.90 min Scan# 1861  
 Delta R.T. 0.02 min  
 Lab File: BM000152.D  
 Acq: 08 Jan 2015 20:52

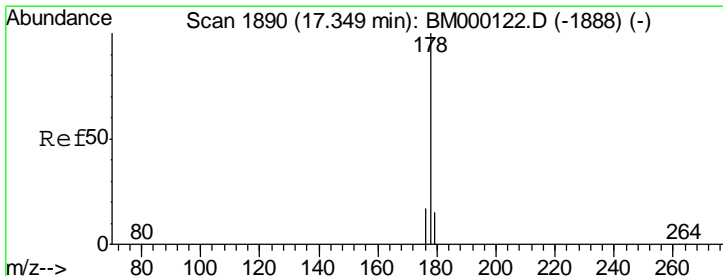
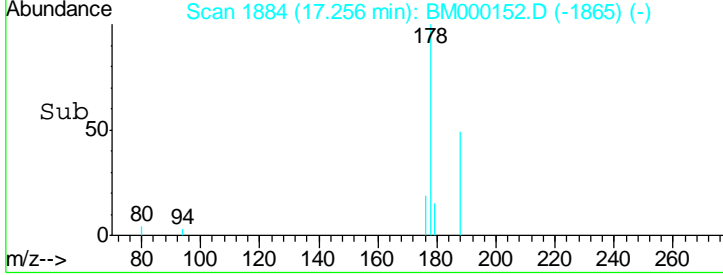
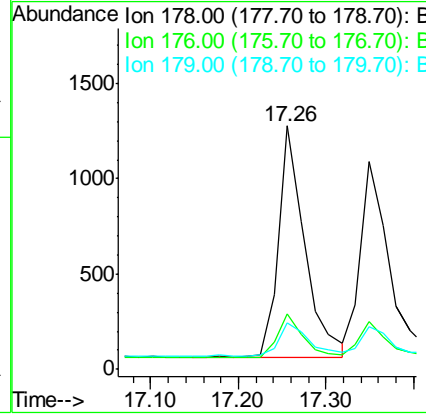
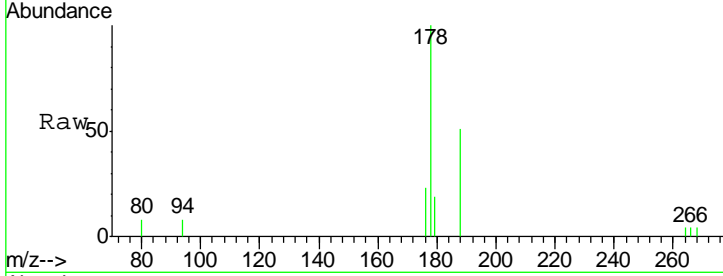
Tgt Ion	Resp	Lower	Upper
266	100		
264	56.9	53.9	80.9
268	55.6	49.2	73.8





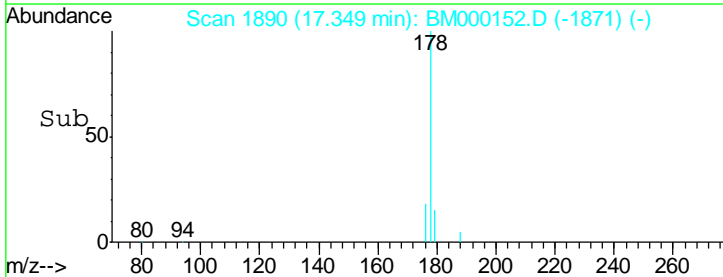
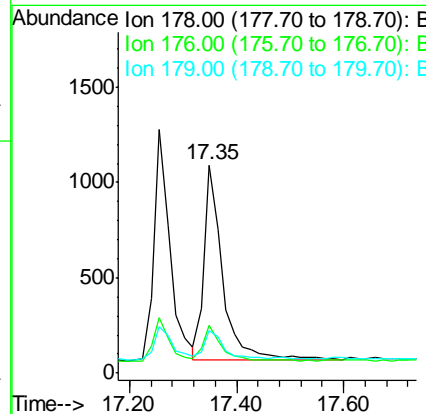
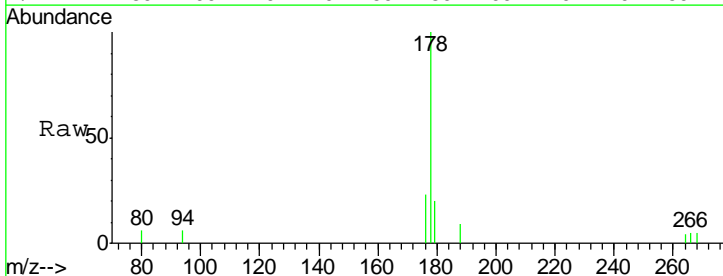
#12  
 Phenanthrene  
 Concen: 0.08 ng/ul  
 RT: 17.26 min Scan# 1884  
 Delta R.T. -0.00 min  
 Lab File: BM000152.D  
 Acq: 08 Jan 2015 20:52

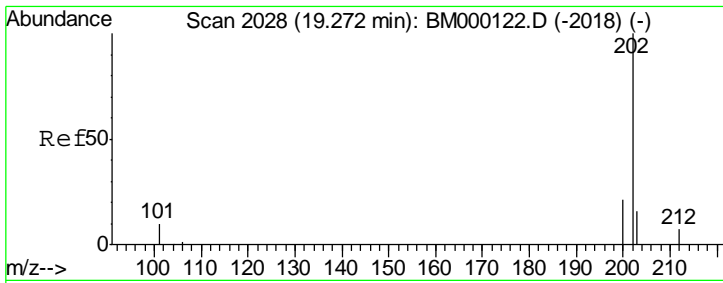
Tgt Ion	Resp	Lower	Upper
178	100		
176	23.0	15.1	22.7#
179	19.2	13.0	19.4



#13  
 Anthracene  
 Concen: 0.08 ng/ul  
 RT: 17.35 min Scan# 1890  
 Delta R.T. -0.00 min  
 Lab File: BM000152.D  
 Acq: 08 Jan 2015 20:52

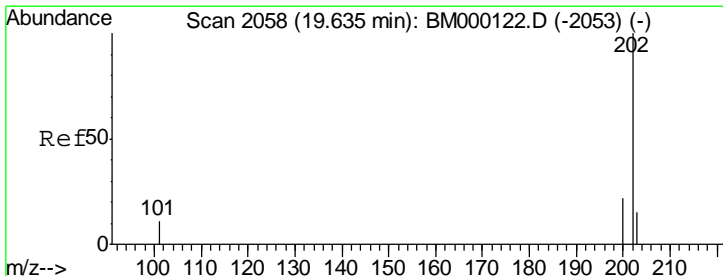
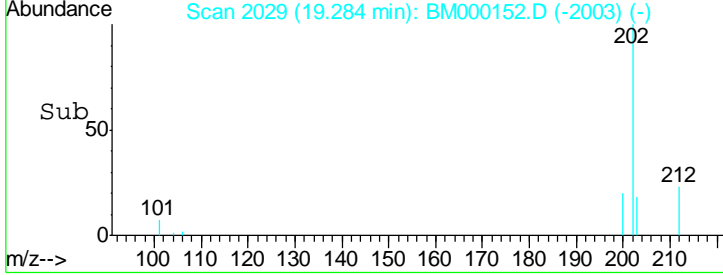
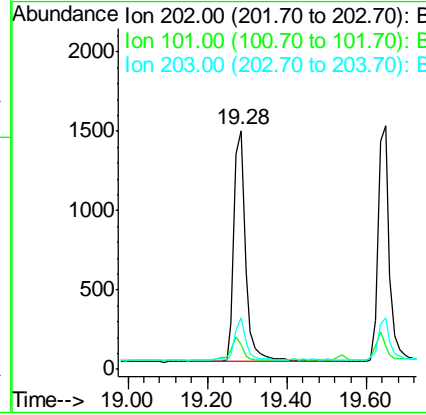
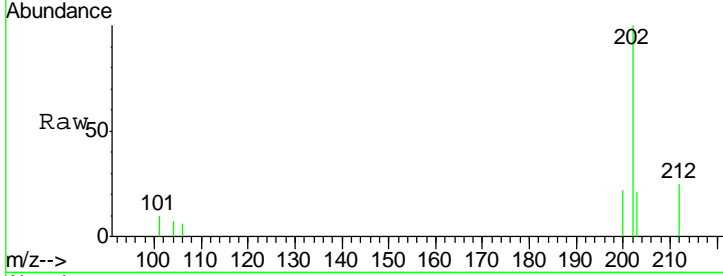
Tgt Ion	Resp	Lower	Upper
178	100		
176	23.0	14.6	21.8#
179	20.3	13.1	19.7#





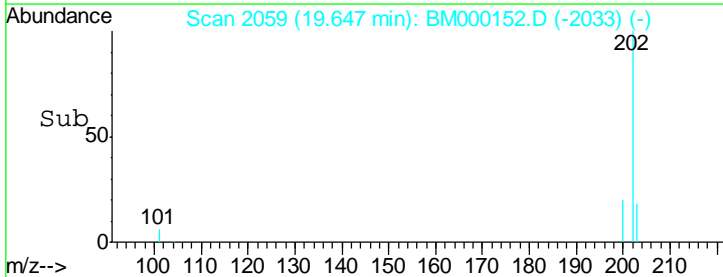
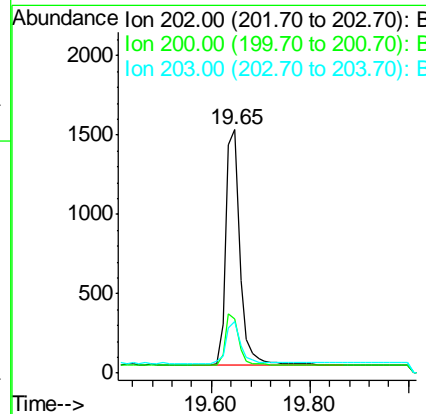
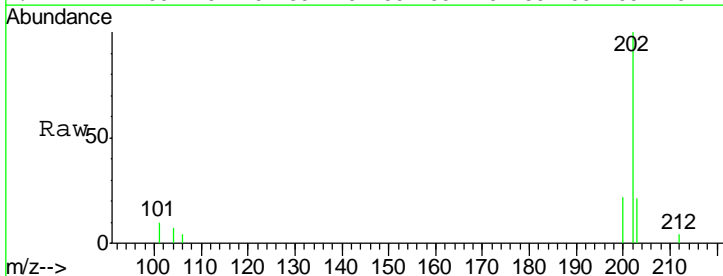
#15  
 Fluoranthene  
 Concen: 0.09 ng/ul  
 RT: 19.28 min Scan# 2029  
 Delta R.T. 0.01 min  
 Lab File: BM000152.D  
 Acq: 08 Jan 2015 20:52

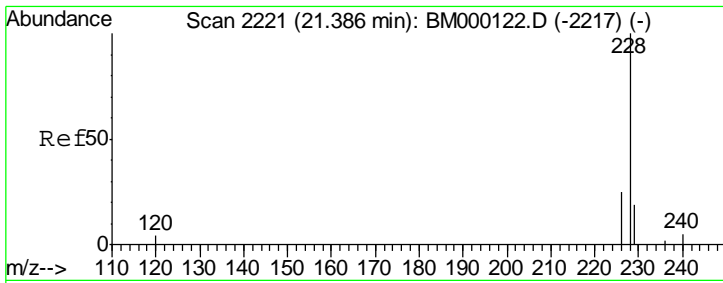
Tgt Ion	Resp	Lower	Upper
202	100		
101	10.2	0.0	30.5
203	21.5	0.0	36.6



#17  
 Pyrene  
 Concen: 0.08 ng/ul  
 RT: 19.65 min Scan# 2059  
 Delta R.T. 0.01 min  
 Lab File: BM000152.D  
 Acq: 08 Jan 2015 20:52

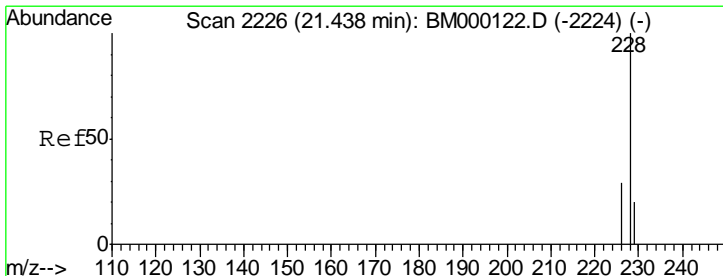
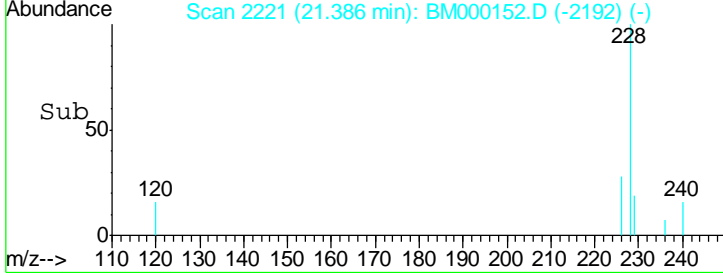
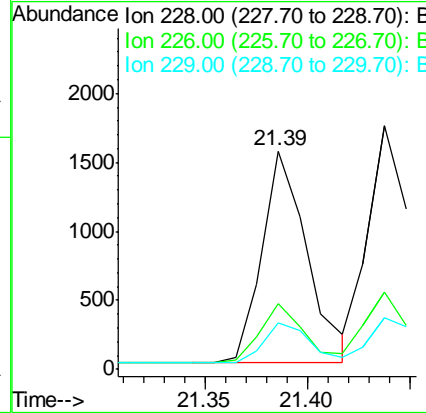
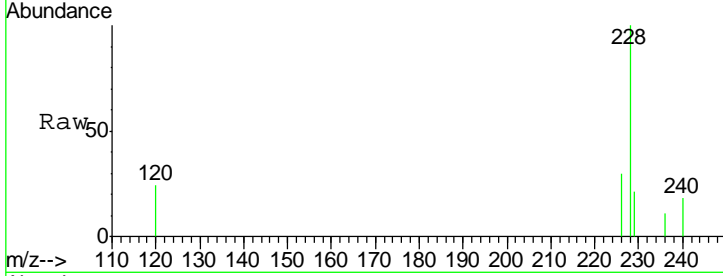
Tgt Ion	Resp	Lower	Upper
202	100		
200	22.0	17.9	26.9
203	21.4	12.8	19.2#





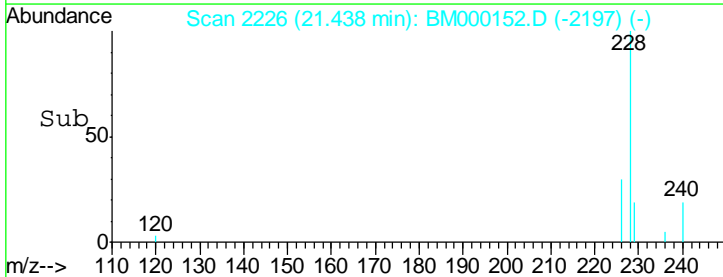
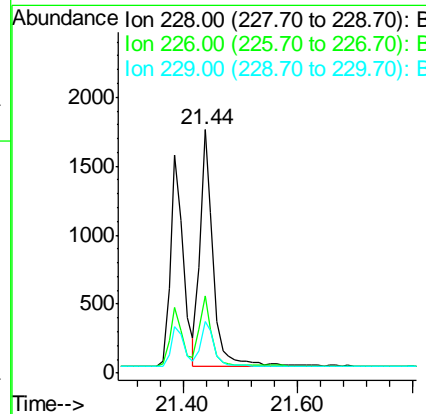
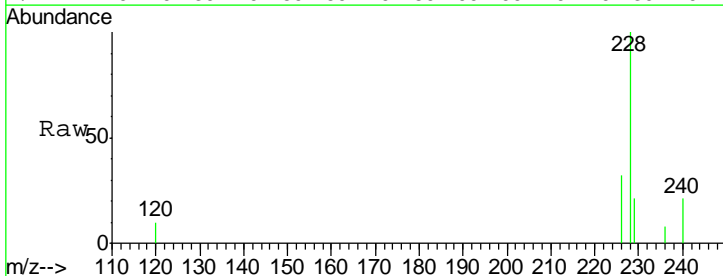
#18  
 Benzo(a)anthracene  
 Concen: 0.08 ng/ul  
 RT: 21.39 min Scan# 2221  
 Delta R.T. -0.00 min  
 Lab File: BM000152.D  
 Acq: 08 Jan 2015 20:52

Tgt Ion	Resp	Lower	Upper
228	100		
226	30.3	20.8	31.2
229	21.1	15.5	23.3

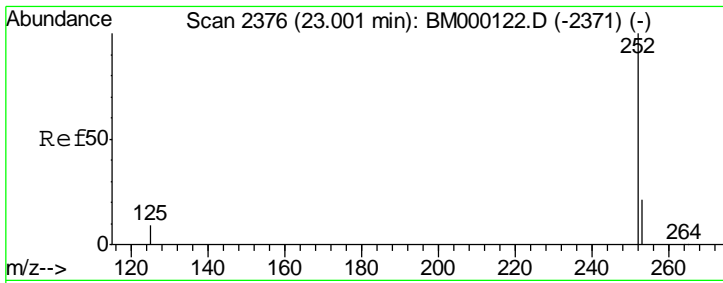


#19  
 Chrysene  
 Concen: 0.09 ng/ul  
 RT: 21.44 min Scan# 2226  
 Delta R.T. -0.00 min  
 Lab File: BM000152.D  
 Acq: 08 Jan 2015 20:52

Tgt Ion	Resp	Lower	Upper
228	100		
226	31.8	23.8	35.6
229	21.4	15.8	23.8

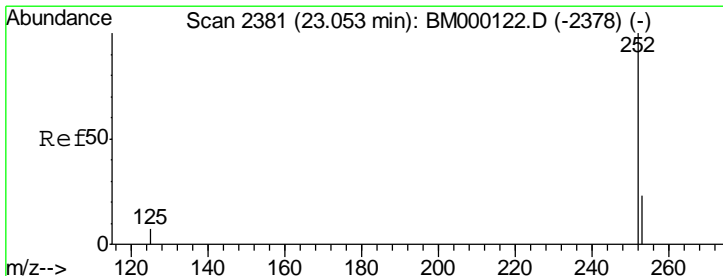
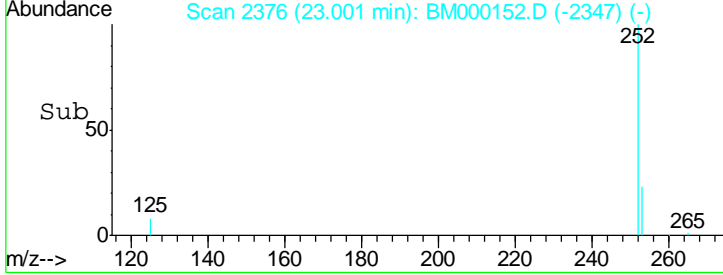
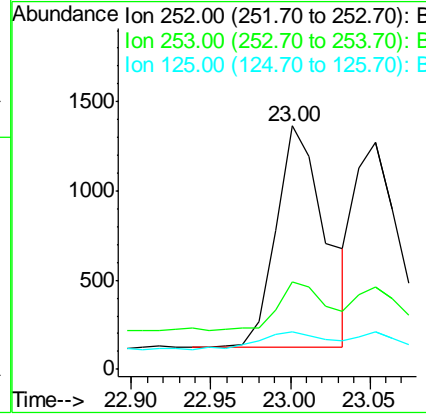
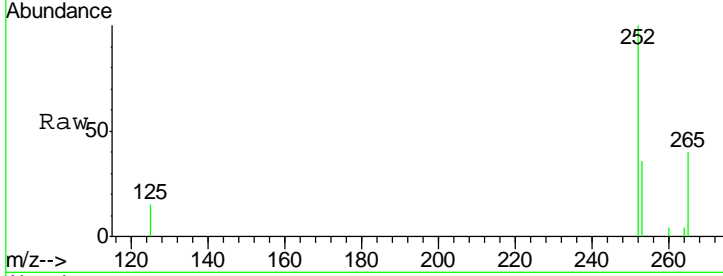






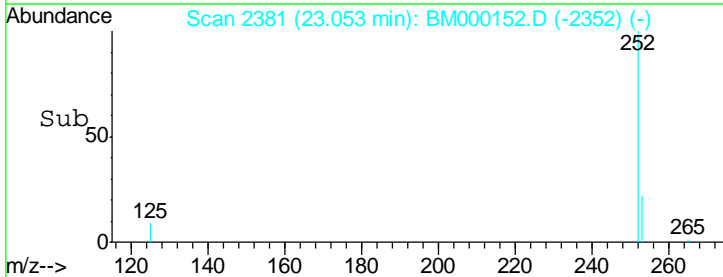
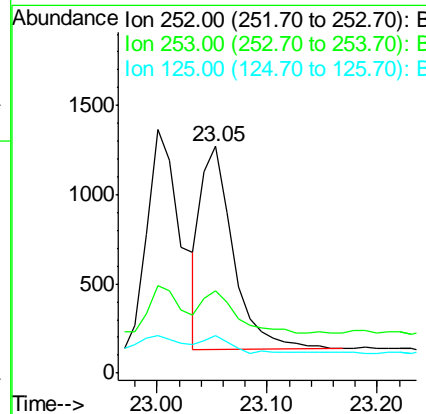
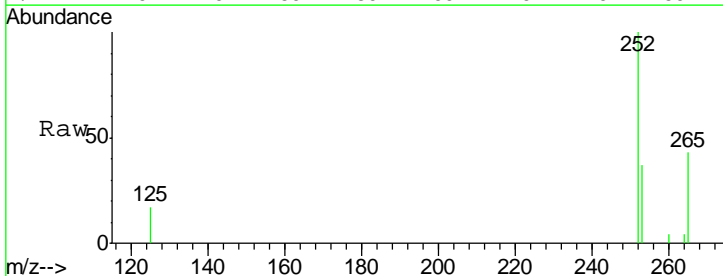
#21  
 Benzo(b)fluoranthene  
 Concen: 0.09 ng/ul  
 RT: 23.00 min Scan# 2376  
 Delta R.T. -0.00 min  
 Lab File: BM000152.D  
 Acq: 08 Jan 2015 20:52

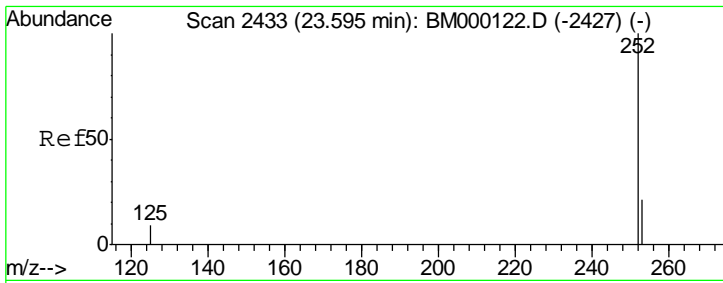
Tgt Ion	Resp	Lower	Upper
252	100		
253	35.9	0.0	48.2
125	15.2	0.0	21.6



#22  
 Benzo(k)fluoranthene  
 Concen: 0.08 ng/ul  
 RT: 23.05 min Scan# 2381  
 Delta R.T. -0.00 min  
 Lab File: BM000152.D  
 Acq: 08 Jan 2015 20:52

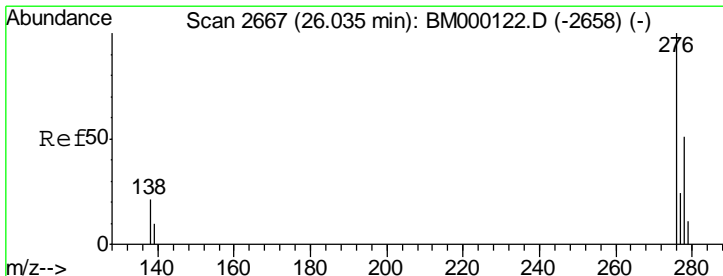
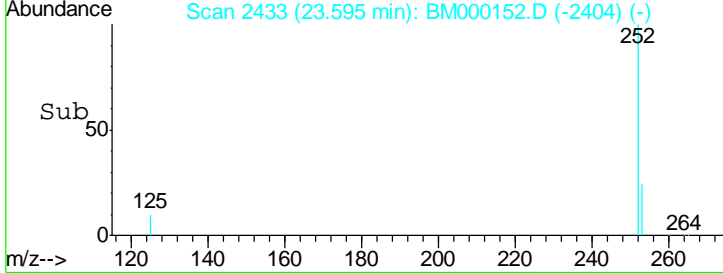
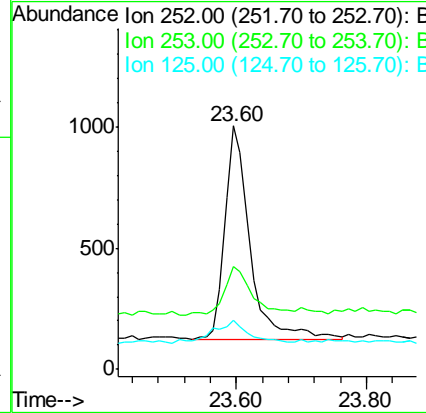
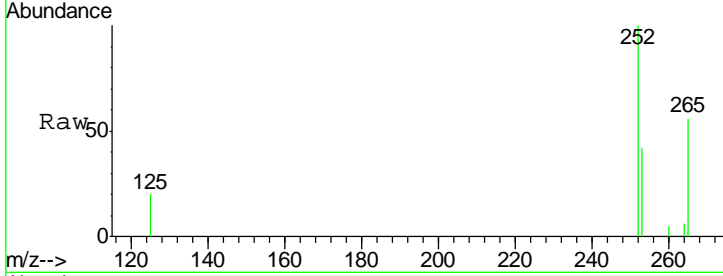
Tgt Ion	Resp	Lower	Upper
252	100		
253	36.6	20.5	30.7#
125	16.8	7.8	11.8#





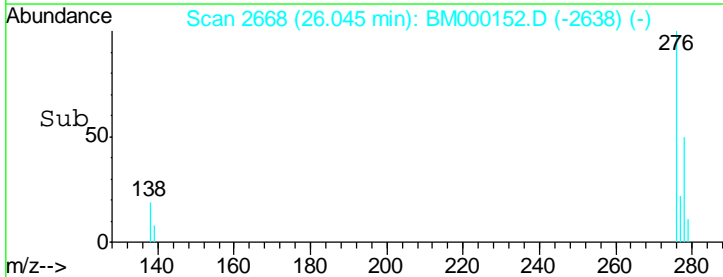
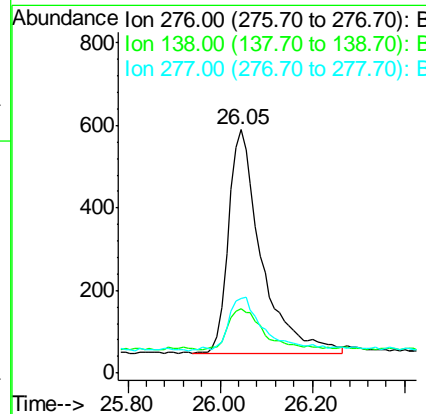
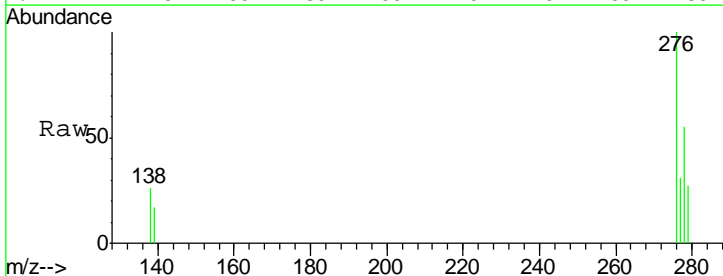
#23  
 Benzo(a)pyrene  
 Concen: 0.08 ng/ul  
 RT: 23.60 min Scan# 2433  
 Delta R.T. -0.00 min  
 Lab File: BM000152.D  
 Acq: 08 Jan 2015 20:52

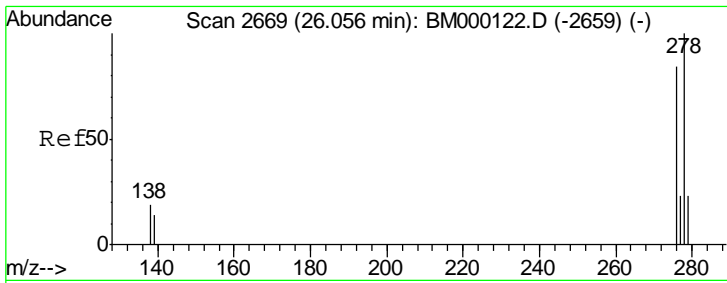
Tgt Ion	Resp	Lower	Upper
252	100		
253	42.4	19.8	29.6#
125	20.2	9.2	13.8#



#24  
 Indeno(1,2,3-cd)pyrene  
 Concen: 0.08 ng/ul  
 RT: 26.05 min Scan# 2668  
 Delta R.T. 0.01 min  
 Lab File: BM000152.D  
 Acq: 08 Jan 2015 20:52

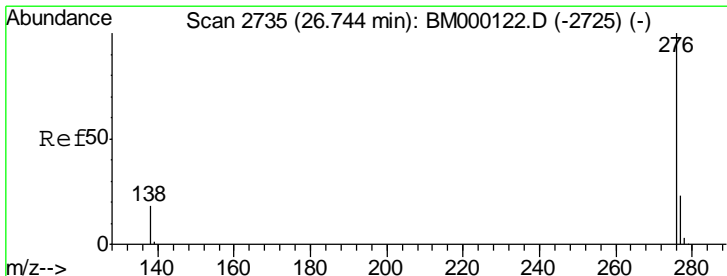
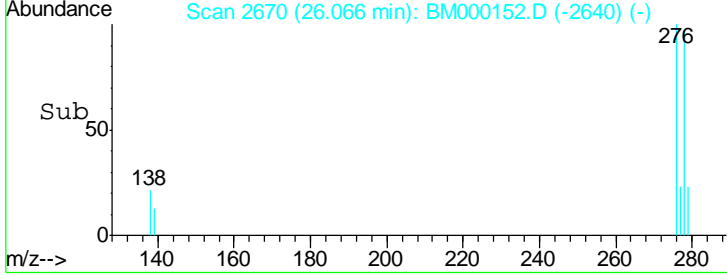
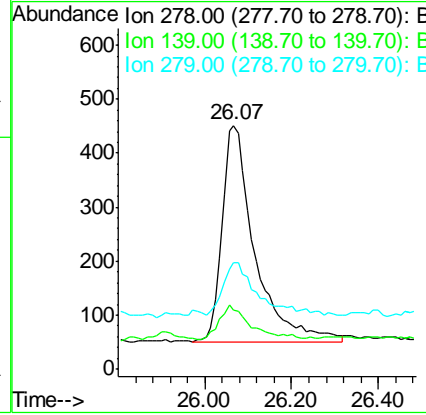
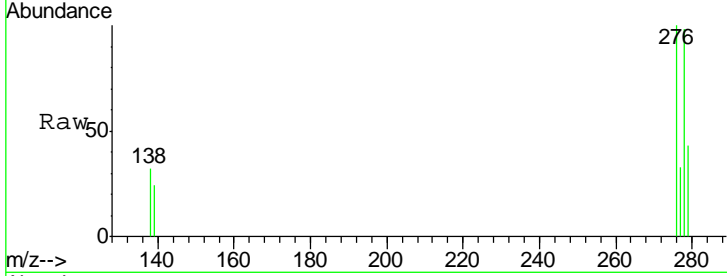
Tgt Ion	Resp	Lower	Upper
276	100		
138	18.4	17.6	26.4
277	24.4	19.9	29.9





#25  
 Dibenzo(a,h)anthracene  
 Concen: 0.08 ng/ul  
 RT: 26.07 min Scan# 2670  
 Delta R.T. 0.01 min  
 Lab File: BM000152.D  
 Acq: 08 Jan 2015 20:52

Tgt Ion	Resp	Lower	Upper
278	2099		
139	24.4	12.6	18.8#
279	43.9	20.6	30.8#



#26  
 Benzo(g,h,i)perylene  
 Concen: 0.08 ng/ul  
 RT: 26.75 min Scan# 2736  
 Delta R.T. 0.01 min  
 Lab File: BM000152.D  
 Acq: 08 Jan 2015 20:52

Tgt Ion	Resp	Lower	Upper
276	2349		
277	32.0	20.0	30.0#
138	26.7	15.7	23.5#

