

Data Path : Z:\svoasrv\HPCHEM1\BNA\_M\Data\BM010824\  
 Data File : BM043796.D  
 Acq On : 08 Jan 2024 16:26  
 Operator : MA/JU  
 Sample : 05952-13DL 5X  
 Misc :  
 ALS Vial : 8 Sample Multiplier: 1

**Instrument :**  
 BNA\_M  
**ClientSampleId :**  
 GCF96DL

Quant Time: Jan 08 17:18:25 2024  
 Quant Method : Z:\svoasrv\HPCHEM1\BNA\_M\Methods\SFAM-EPA-BM121523.MA.M  
 Quant Title : SVOA CALIBRATION  
 QLast Update : Fri Dec 29 22:31:57 2023  
 Response via : Initial Calibration

**Manual Integrations**  
**APPROVED**  
 Reviewed By :Yogesh Patel

01/09/2024  
 Supervised By :mohammad ahmed

Compound	R.T.	QI	on	Response	Conc	Units	Dev(Min)
<b>Internal Standards</b>							
1) 1,4-Dichlorobenzene-d4	7.945	152		330333	20.000	ng/u1	-0.01
20) Naphthalene-d8	10.757	136		1311601	20.000	ng/u1	0.00
38) Acenaphthene-d10	14.592	164		762786	20.000	ng/u1	0.00
64) Phenanthrene-d10	17.345	188		1597581	20.000	ng/u1	# 0.00
79) Chrysene-d12	21.533	240		1448302	20.000	ng/u1	0.01
88) Perylene-d12	23.950	264		1714381	20.000	ng/u1	0.02
<b>System Monitoring Compounds</b>							
3) 1,4-Dioxane-d8	3.363	96		2639	0.260	ng/uL	0.00
4) Pyridine-d5	0.000	84		0d	0.000	ng/u1	
7) Phenol-d5	7.122	99		74478	1.982	ng/u1	0.00
9) Bis-(2-Chloroethyl)eth...	7.287	67		66759	2.805	ng/u1	-0.01
11) 2-Chlorophenol-d4	7.475	132		69486	2.422	ng/u1	-0.01
15) 4-Methylphenol-d8	8.681	113		27641	0.948	ng/u1	0.01
21) Nitrobenzene-d5	9.128	128		33312	2.625	ng/u1	0.00
24) 2-Nitrophenol-d4	9.851	143		29008	2.212	ng/u1	0.00
28) 2,4-Dichlorophenol-d3	10.404	165		52849	2.283	ng/u1	0.02
31) 4-Chloroaniline-d4	10.951	131		2994m	0.088	ng/u1	0.04
46) Dimethylphthalate-d6	14.016	166		147391	2.146	ng/u1	0.00
49) Acenaphthylene-d8	14.286	160		243609	2.991	ng/u1	0.00
54) 4-Nitrophenol-d4	14.863	143		5427m	0.418	ng/u1	0.07
60) Fluorene-d10	15.586	176		187425	3.301	ng/u1	0.00
65) 4,6-Dinitro-2-methylph...	15.733	200		5868	0.555	ng/u1	0.02
73) Anthracene-d10	17.445	188		252522	2.818	ng/u1	0.00
81) Pyrene-d10	19.739	212		325742	2.849	ng/u1	0.01
92) Benzo(a)pyrene-d12	23.791	264		294765	2.786	ng/u1	0.02
<b>Target Compounds</b>							
71) Pentachlorophenol	16.992	266		371230	28.319	ng/u1	99

01/09/2024

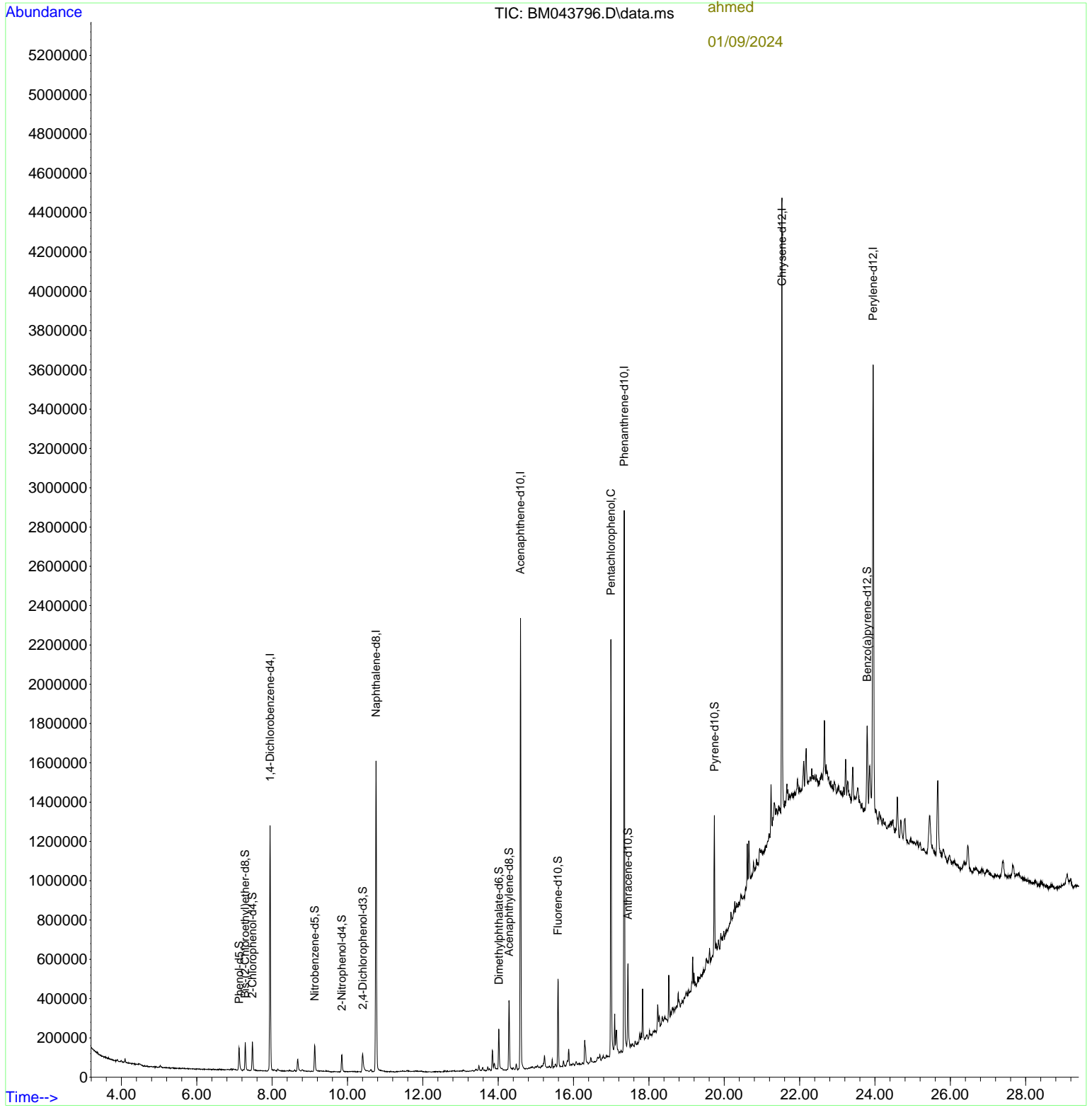
(#) = qualifier out of range (m) = manual integration (+) = signals summed

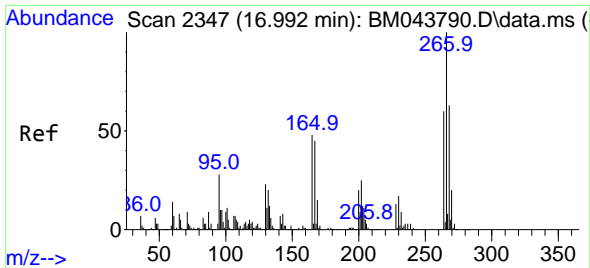
Data Path : Z:\svoasrv\HPCHEM1\BNA\_M\Data\BM010824\  
 Data File : BM043796.D  
 Acq On : 08 Jan 2024 16:26  
 Operator : MA/JU  
 Sample : 05952-13DL 5X  
 Misc :  
 ALS Vial : 8 Sample Multiplier: 1

**Instrument :**  
 BNA\_M  
**ClientSampleId :**  
 GCF96DL

Quant Time: Jan 08 17:18:25 2024  
 Quant Method : Z:\svoasrv\HPCHEM1\BNA\_M\Methods\SFAM-EPA-BM121523.MA.M  
 Quant Title : SVOA CALIBRATION  
 QLast Update : Fri Dec 29 22:31:57 2023  
 Response via : Initial Calibration

**Manual Integrations**  
**APPROVED**  
 Reviewed By :Yogesh Patel  
 01/09/2024  
 Supervised By :mohammad ahmed  
 01/09/2024





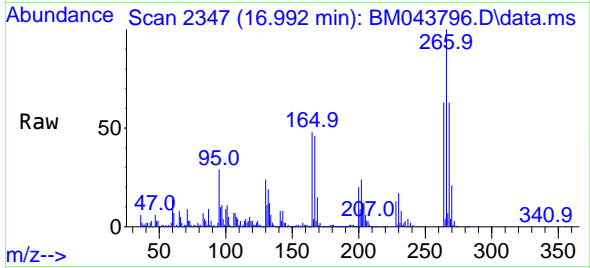
#71  
 Pentachlorophenol  
 Concen: 28.319 ng/ul  
 RT: 16.992 min Scan# 21  
 Delta R.T. 0.012 min  
 Lab File: BM043796.D  
 Acq: 08 Jan 2024 16:26

Instrument :

BNA\_M

ClientSampleId :

GCF96DL



Tgt Ion:266 Resp: 371230  
 Ion Ratio Lower Upper  
 266 100  
 264 63.2 49.9 74.9  
 268 63.2 51.0 76.6

Manual Integrations

APPROVED

Reviewed By :Yogesh  
 Patel

01/09/2024

Supervised By :mohammad  
 ahmed

01/09/2024

