

Data Path : Z:\svoasrv\HPCHEM1\BNA_M\Data\BM011724\
 Data File : BM043869.D
 Acq On : 17 Jan 2024 16:24
 Operator : MA/JU
 Sample : PB158463BS
 Misc :
 ALS Vial : 10 Sample Multiplier: 1

Instrument :
 BNA_M
 ClientSampleId :
 SLCS463

Manual Integrations
 APPROVED

Reviewed By :Jagrut Upadhyay 01/18/2024
 Supervised By :mohammad ahmed 01/19/2024

Quant Time: Jan 18 00:12:43 2024
 Quant Method : Z:\svoasrv\HPCHEM1\BNA_M\Methods\SFAM-EPA-BM010924.MA.M
 Quant Title : SVOA CALIBRATION
 QLast Update : Wed Jan 10 01:07:47 2024
 Response via : Initial Calibration

Compound	R.T.	QIon	Response	Conc	Units	Dev(Min)
Internal Standards						
1) 1,4-Dichlorobenzene-d4	7.939	152	227045	20.000	ng/ul	-0.01
20) Naphthalene-d8	10.751	136	1075871	20.000	ng/ul	0.00
38) Acenaphthene-d10	14.586	164	703092	20.000	ng/ul	0.00
64) Phenanthrene-d10	17.339	188	1508631	20.000	ng/ul	0.00
79) Chrysene-d12	21.533	240	1437280	20.000	ng/ul	0.00
88) Perylene-d12	23.956	264	1458928	20.000	ng/ul	0.00
System Monitoring Compounds						
3) 1,4-Dioxane-d8	3.351	96	36247	6.164	ng/uL	0.00
4) Pyridine-d5	3.775	84	560016	30.916	ng/ul	0.00
7) Phenol-d5	7.110	99	764564	33.275	ng/ul	-0.01
9) Bis-(2-Chloroethyl)eth...	7.281	67	482088	33.669	ng/ul	-0.01
11) 2-Chlorophenol-d4	7.469	132	571351	34.183	ng/ul	-0.01
15) 4-Methylphenol-d8	8.663	113	626709	34.241	ng/ul	-0.01
21) Nitrobenzene-d5	9.122	128	305724	33.907	ng/ul	0.00
24) 2-Nitrophenol-d4	9.839	143	341247	33.610	ng/ul	0.00
28) 2,4-Dichlorophenol-d3	10.375	165	638345	35.108	ng/ul	-0.01
31) 4-Chloroaniline-d4	10.904	131	822383	28.558	ng/ul	0.00
46) Dimethylphthalate-d6	14.010	166	1955964	33.212	ng/ul	0.00
49) Acenaphthylene-d8	14.280	160	2326682	34.685	ng/ul	-0.01
54) 4-Nitrophenol-d4	14.815	143	379726	32.966	ng/ul	-0.01
60) Fluorene-d10	15.580	176	1697863	34.258	ng/ul	0.00
65) 4,6-Dinitro-2-methylph...	15.721	200	324689	30.483	ng/ul	0.00
73) Anthracene-d10	17.439	188	2593671	33.783	ng/ul	0.00
81) Pyrene-d10	19.733	212	2978906	33.556	ng/ul	0.00
92) Benzo(a)pyrene-d12	23.803	264	2883124	35.800	ng/ul	0.00
Target Compounds						
2) 1,4-Dioxane	3.381	88	76029	12.323	ng/uL#	92
5) Pyridine	3.793	79	567738	30.547	ng/ul	99
6) Benzaldehyde	7.092	77	408750m	45.072	ng/ul	
8) Phenol	7.139	94	782486	33.906	ng/ul	99
10) Bis(2-Chloroethyl)ether	7.375	93	616510	33.134	ng/ul	96
12) 2-Chlorophenol	7.504	128	604188	34.825	ng/ul	99
13) 2-Methylphenol	8.392	108	601400	33.830	ng/ul	99
14) 2,2'-oxybis(1-Chloropr...	8.469	45	1107380	35.300	ng/ul	99
16) Acetophenone	8.781	105	980357	34.544	ng/ul	99
17) N-Nitroso-di-n-propyla...	8.763	70	566573	36.118	ng/ul	95
18) 4-Methylphenol	8.728	108	667223	34.549	ng/ul	98
19) Hexachloroethane	9.010	117	252213	33.545	ng/ul	99
22) Nitrobenzene	9.163	77	773068	34.386	ng/ul	100
23) Isophorone	9.692	82	1584317	34.355	ng/ul	99
25) 2-Nitrophenol	9.869	139	367515	34.247	ng/ul	94
26) 2,4-Dimethylphenol	9.933	107	644458	30.960	ng/ul	100
27) Bis(2-Chloroethoxy)met...	10.175	93	921145	33.678	ng/ul	98
29) 2,4-Dichlorophenol	10.404	162	620115	34.401	ng/ul	100
30) Naphthalene	10.798	128	2079611	33.221	ng/ul	100
32) 4-Chloroaniline	10.927	127	725794	25.935	ng/ul	100
33) Hexachlorobutadiene	11.063	225	324551	32.176	ng/ul	98
34) Caprolactam	11.739	113	224212m	34.545	ng/ul	
35) 4-Chloro-3-methylphenol	12.057	107	704436	35.268	ng/ul	99
36) 2-Methylnaphthalene	12.410	142	1479005	33.893	ng/ul	100

Data Path : Z:\svoasrv\HPCHEM1\BNA_M\Data\BM011724\
 Data File : BM043869.D
 Acq On : 17 Jan 2024 16:24
 Operator : MA/JU
 Sample : PB158463BS
 Misc :
 ALS Vial : 10 Sample Multiplier: 1

Instrument :
 BNA_M
 ClientSampleId :
 SLCS463

Manual Integrations
 APPROVED

Reviewed By :Jagrut Upadhyay 01/18/2024
 Supervised By :mohammad ahmed 01/19/2024

Quant Time: Jan 18 00:12:43 2024
 Quant Method : Z:\svoasrv\HPCHEM1\BNA_M\Methods\SFAM-EPA-BM010924.MA.M
 Quant Title : SVOA CALIBRATION
 QLast Update : Wed Jan 10 01:07:47 2024
 Response via : Initial Calibration

Compound	R.T.	QIon	Response	Conc	Units	Dev(Min)
37) 1-Methylnaphthalene	12.627	142	1479964	34.014	ng/ul	99
39) 1,2,4,5-Tetrachloroben...	12.774	216	675065	32.285	ng/ul	98
40) Hexachlorocyclopentadiene	12.739	237	345339	24.694	ng/ul	99
41) 2,4,6-Trichlorophenol	13.027	196	489737	32.987	ng/ul	99
42) 2,4,5-Trichlorophenol	13.104	196	534032	33.876	ng/ul	99
43) 1,1'-Biphenyl	13.421	154	1988080	33.115	ng/ul	100
44) 2-Chloronaphthalene	13.468	162	1542080	33.335	ng/ul	98
45) 2-Nitroaniline	13.686	65	532785	36.492	ng/ul	94
47) Dimethylphthalate	14.057	163	1988193	33.585	ng/ul	100
48) 2,6-Dinitrotoluene	14.186	165	400875	34.168	ng/ul	95
50) Acenaphthylene	14.310	152	2663311	33.997	ng/ul	100
51) 3-Nitroaniline	14.515	138	411166	33.141	ng/ul	97
52) Acenaphthene	14.651	153	1750838	33.703	ng/ul	99
53) 2,4-Dinitrophenol	14.733	184	206281	28.293	ng/ul	98
55) 4-Nitrophenol	14.833	109	301760	34.336	ng/ul	97
56) Dibenzofuran	14.986	168	2373170	34.001	ng/ul	99
57) 2,4-Dinitrotoluene	14.980	165	614264	35.541	ng/ul	89
58) 2,3,4,6-Tetrachlorophenol	15.215	232	432622	32.937	ng/ul	98
59) Diethylphthalate	15.415	149	2072584	32.841	ng/ul	100
61) Fluorene	15.639	166	2096765	35.044	ng/ul	100
62) 4-Chlorophenyl-phenyle...	15.633	204	947103	33.814	ng/ul	99
63) 4-Nitroaniline	15.686	138	422217	42.360	ng/ul	98
66) 4,6-Dinitro-2-methylph...	15.739	198	345581	30.141	ng/ul	97
67) N-Nitrosodiphenylamine	15.851	169	1656320	33.361	ng/ul	99
68) 4-Bromophenyl-phenylether	16.527	248	547524	32.438	ng/ul	99
69) Hexachlorobenzene	16.633	284	648580	32.571	ng/ul	100
70) Atrazine	16.815	200	474449	26.420	ng/ul	98
71) Pentachlorophenol	16.986	266	360710	28.813	ng/ul	99
72) Phenanthrene	17.386	178	3154367	34.047	ng/ul	99
74) Anthracene	17.474	178	3214249	34.091	ng/ul	100
75) 1,2,3,4-Tetrachloroben...	13.380	216	693872	32.808	ng/uL	100
76) Pentachlorobenzene	14.898	250	700313	32.452	ng/uL	98
77) Carbazole	17.756	167	2925156	33.468	ng/ul	100
78) Di-n-butylphthalate	18.315	149	3787641	31.913	ng/ul	100
80) Fluoranthene	19.397	202	3605880	33.196	ng/ul	99
82) Pyrene	19.762	202	3816201	33.902	ng/ul	99
83) Butylbenzylphthalate	20.668	149	1734079	32.578	ng/ul	97
84) 3,3'-Dichlorobenzidine	21.456	252	1152385	33.304	ng/ul	99
85) Benzo(a)anthracene	21.515	228	3751992	34.188	ng/ul	99
86) Bis(2-ethylhexyl)phtha...	21.444	149	2727552	32.175	ng/ul	99
87) Chrysene	21.568	228	3381646	34.135	ng/ul	99
89) Di-n-octyl phthalate	22.386	149	4441078	32.699	ng/ul	100
90) Benzo(b)fluoranthene	23.221	252	3603968	35.244	ng/ul	99
91) Benzo(k)fluoranthene	23.268	252	3493779	34.687	ng/ul	100
93) Benzo(a)pyrene	23.850	252	3319617	35.465	ng/ul	100
94) Indeno(1,2,3-cd)pyrene	26.485	276	4001801	37.462	ng/ul	99
95) Dibenzo(a,h)anthracene	26.503	278	3349897	37.847	ng/ul	100
96) Benzo(g,h,i)perylene	27.256	276	2987800	36.832	ng/ul	100

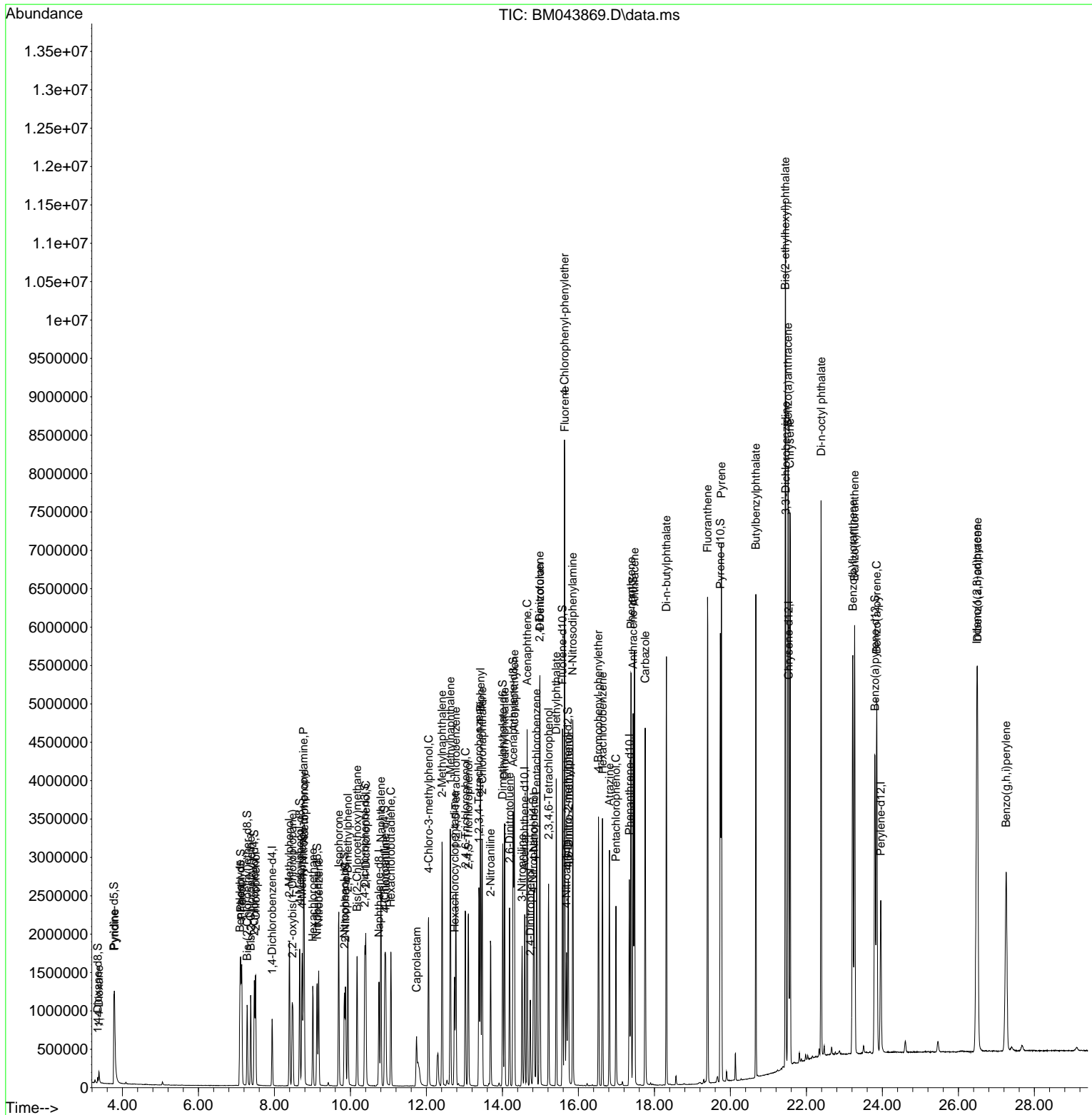
(#) = qualifier out of range (m) = manual integration (+) = signals summed

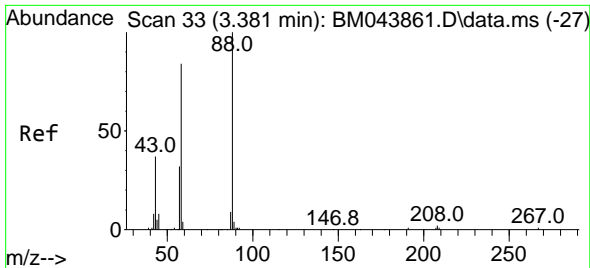
Data Path : Z:\svoasrv\HPCHEM1\BNA_M\Data\BM011724\
 Data File : BM043869.D
 Acq On : 17 Jan 2024 16:24
 Operator : MA/JU
 Sample : PB158463BS
 Misc :
 ALS Vial : 10 Sample Multiplier: 1

Instrument :
 BNA_M
ClientSampleId :
 SLCS463

Quant Time: Jan 18 00:12:43 2024
 Quant Method : Z:\svoasrv\HPCHEM1\BNA_M\Methods\SFAM-EPA-BM010924.MA.M
 Quant Title : SVOA CALIBRATION
 QLast Update : Wed Jan 10 01:07:47 2024
 Response via : Initial Calibration

Manual Integrations
APPROVED
 Reviewed By :Jagrut Upadhyay 01/18/2024
 Supervised By :mohammad ahmed 01/19/2024





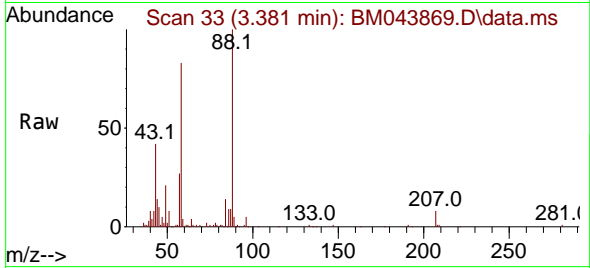
#2
 1,4-Dioxane
 Concen: 12.323 ng/uL
 RT: 3.381 min Scan# 31
 Delta R.T. -0.012 min
 Lab File: BM043869.D
 Acq: 17 Jan 2024 16:24

Instrument :

BNA_M

ClientSampleId :

SLCS463

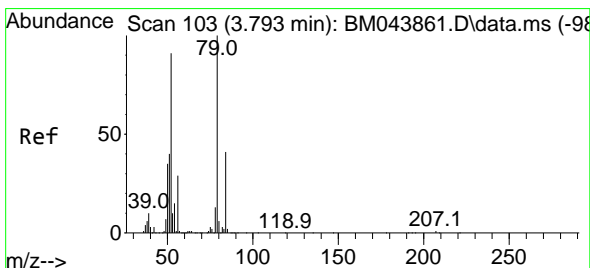
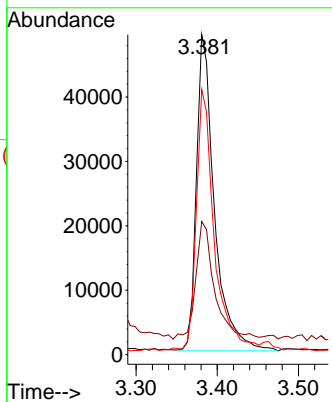
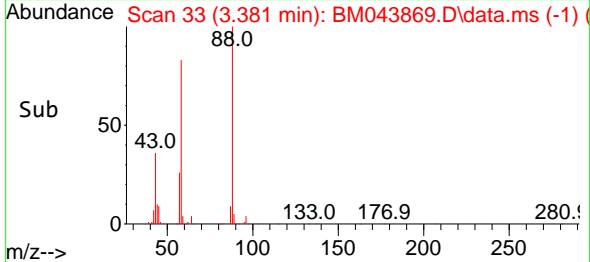


Tgt Ion: 88 Resp: 76029
 Ion Ratio Lower Upper
 88 100
 43 41.6 27.2 40.8
 58 82.9 62.6 93.8

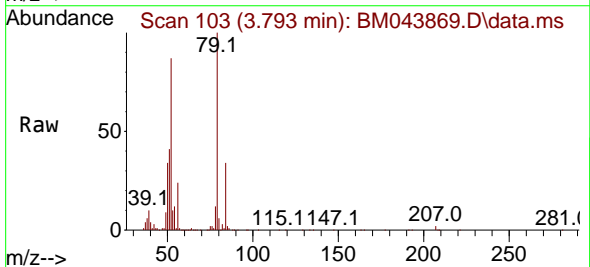
Manual Integrations

APPROVED

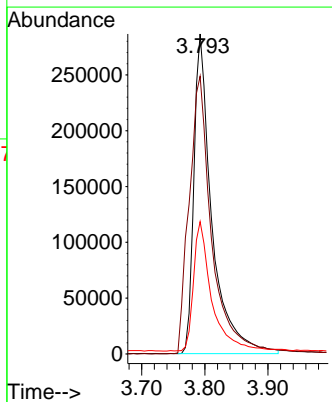
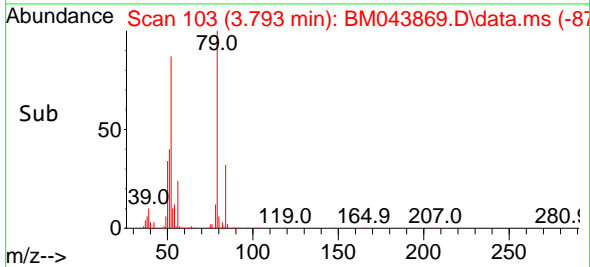
Reviewed By :Jagrut Upadhyay 01/18/2024
 Supervised By :mohammad ahmed 01/19/2024

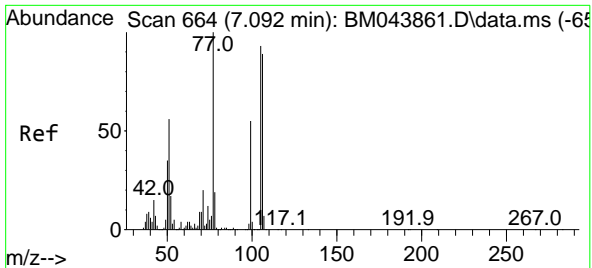


#5
 Pyridine
 Concen: 30.547 ng/uL
 RT: 3.793 min Scan# 103
 Delta R.T. -0.006 min
 Lab File: BM043869.D
 Acq: 17 Jan 2024 16:24



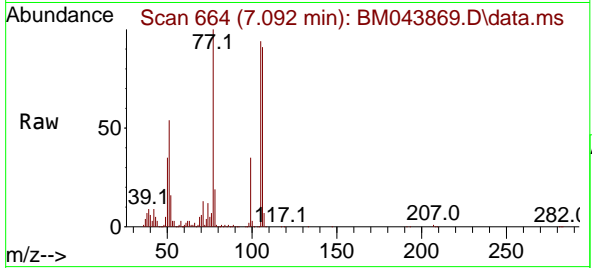
Tgt Ion: 79 Resp: 567738
 Ion Ratio Lower Upper
 79 100
 52 86.8 69.4 104.0
 51 41.3 31.4 47.2





#6
Benzaldehyde
Concen: 45.072 ng/ul m
RT: 7.092 min Scan# 60
Delta R.T. -0.006 min
Lab File: BM043869.D
Acq: 17 Jan 2024 16:24

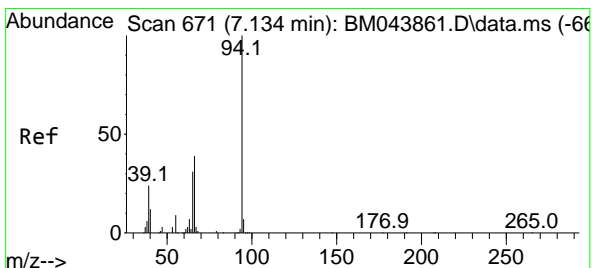
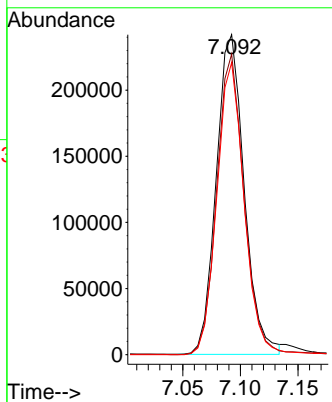
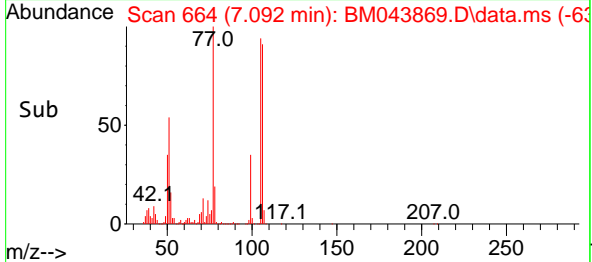
Instrument :
BNA_M
ClientSampleId :
SLCS463



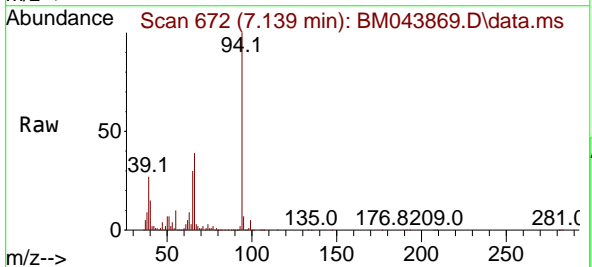
Tgt Ion: 77 Resp: 408750
Ion Ratio Lower Upper
77 100
105 93.9 76.0 114.0
106 91.3 74.2 111.4

Manual Integrations
APPROVED

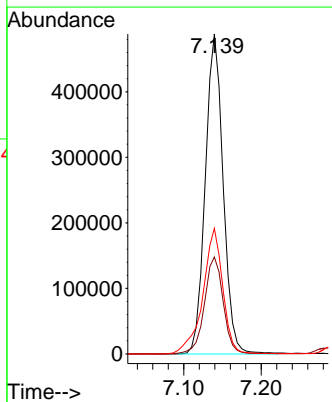
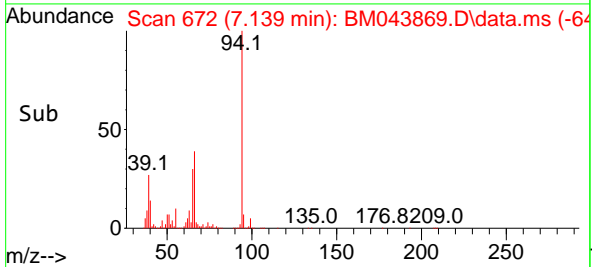
Reviewed By :Jagrut Upadhyay 01/18/2024
Supervised By :mohammad ahmed 01/19/2024

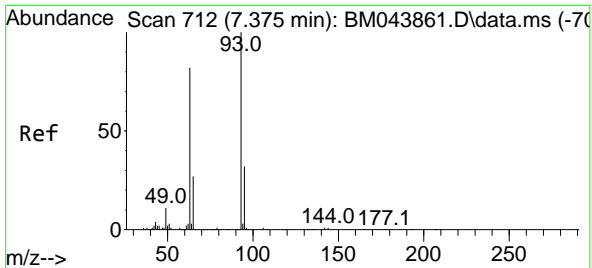


#8
Phenol
Concen: 33.906 ng/ul
RT: 7.139 min Scan# 672
Delta R.T. -0.012 min
Lab File: BM043869.D
Acq: 17 Jan 2024 16:24



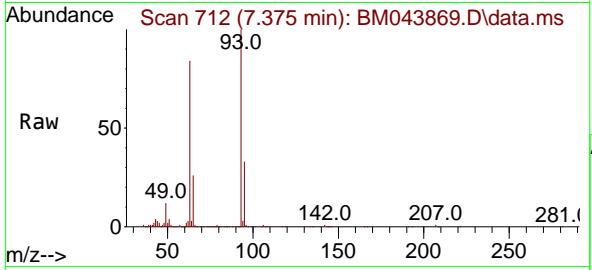
Tgt Ion: 94 Resp: 782486
Ion Ratio Lower Upper
94 100
65 30.3 23.9 35.9
66 39.3 30.7 46.1





#10
 Bis(2-Chloroethyl)ether
 Concen: 33.134 ng/ul
 RT: 7.375 min Scan# 712
 Delta R.T. -0.012 min
 Lab File: BM043869.D
 Acq: 17 Jan 2024 16:24

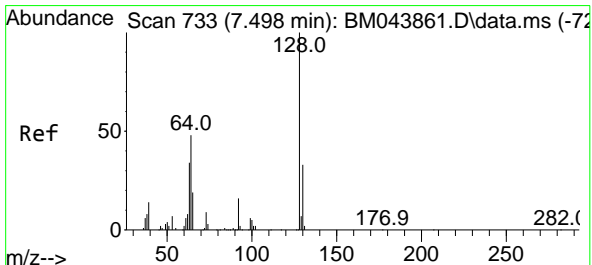
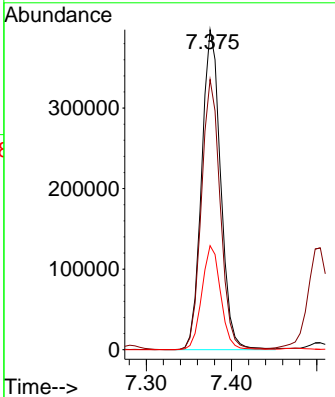
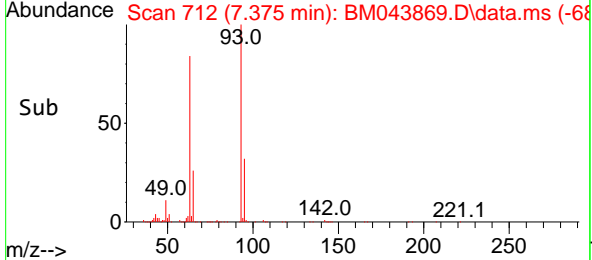
Instrument : BNA_M
 ClientSampleId : SLCS463



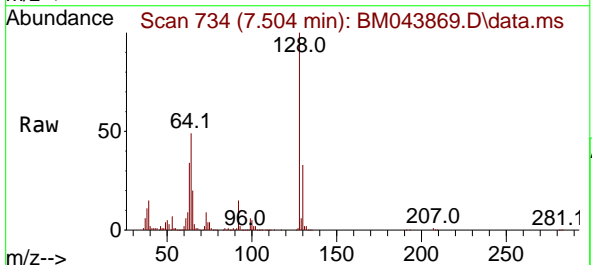
Tgt Ion: 93 Resp: 616510

Ion	Ratio	Lower	Upper
93	100		
63	84.5	64.1	96.1
95	32.5	26.1	39.1

Manual Integrations
APPROVED
 Reviewed By :Jagrut Upadhyay 01/18/2024
 Supervised By :mohammad ahmed 01/19/2024

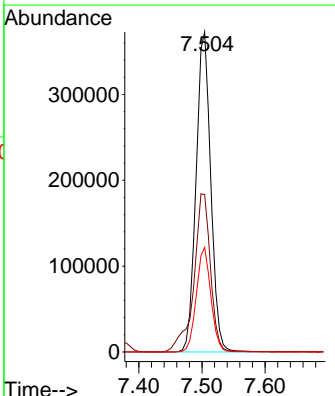
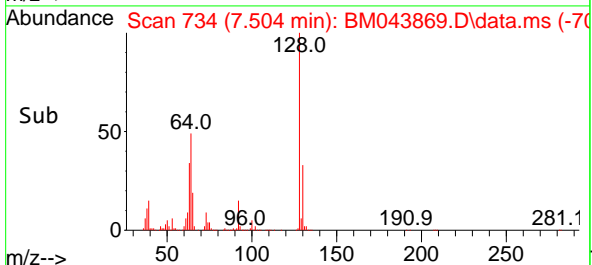


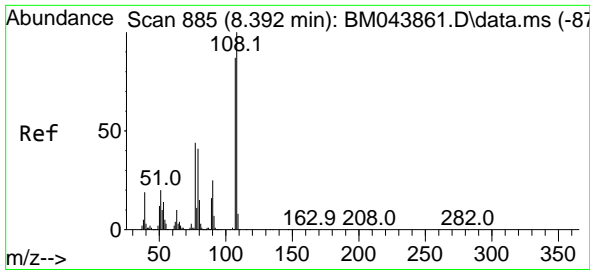
#12
 2-Chlorophenol
 Concen: 34.825 ng/ul
 RT: 7.504 min Scan# 734
 Delta R.T. -0.006 min
 Lab File: BM043869.D
 Acq: 17 Jan 2024 16:24



Tgt Ion:128 Resp: 604188

Ion	Ratio	Lower	Upper
128	100		
64	49.2	38.7	58.1
130	32.7	25.3	37.9





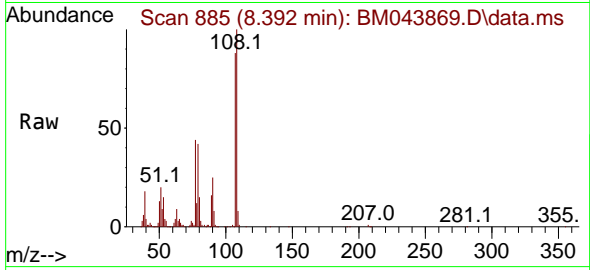
#13
 2-Methylphenol
 Concen: 33.830 ng/ul
 RT: 8.392 min Scan# 885
 Delta R.T. -0.012 min
 Lab File: BM043869.D
 Acq: 17 Jan 2024 16:24

Instrument :

BNA_M

ClientSampleId :

SLCS463

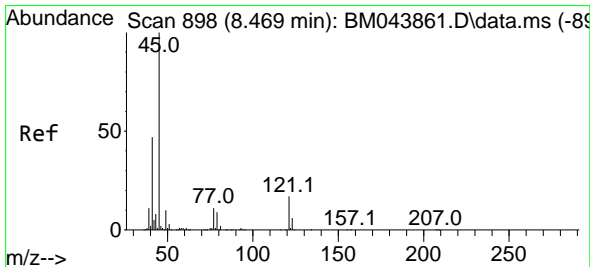
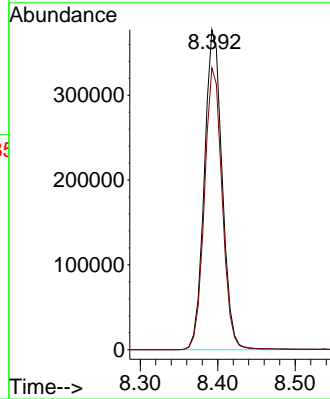
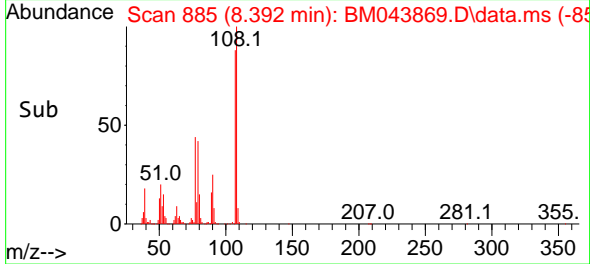


Tgt Ion: 108 Resp: 601400
 Ion Ratio Lower Upper
 108 100
 107 88.1 71.6 107.4

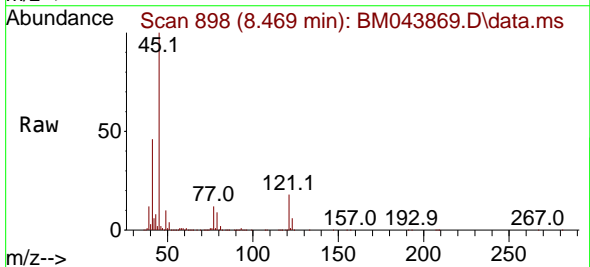
Manual Integrations

APPROVED

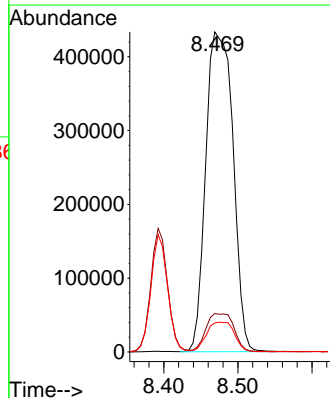
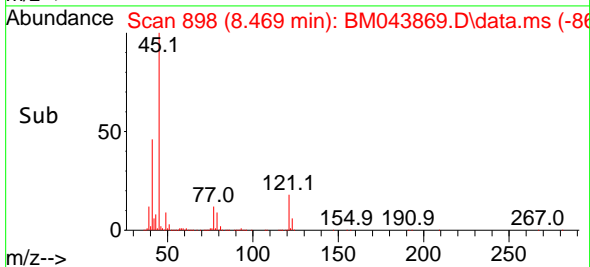
Reviewed By :Jagrut Upadhyay 01/18/2024
 Supervised By :mohammad ahmed 01/19/2024

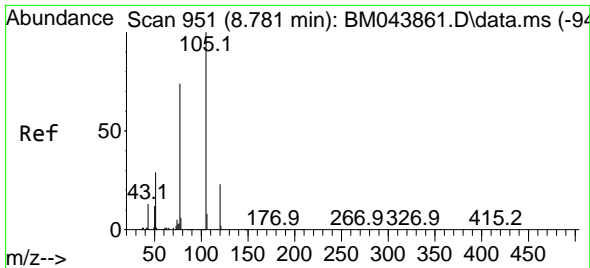


#14
 2,2'-oxybis(1-Chloropropane)
 Concen: 35.300 ng/ul
 RT: 8.469 min Scan# 898
 Delta R.T. -0.006 min
 Lab File: BM043869.D
 Acq: 17 Jan 2024 16:24



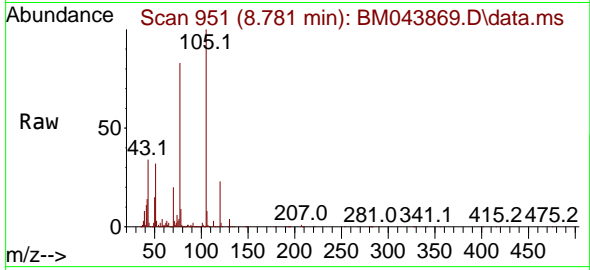
Tgt Ion: 45 Resp: 1107380
 Ion Ratio Lower Upper
 45 100
 77 12.0 9.9 14.9
 79 9.0 7.0 10.6





#16
 Acetophenone
 Concen: 34.544 ng/uI
 RT: 8.781 min Scan# 91
 Delta R.T. -0.006 min
 Lab File: BM043869.D
 Acq: 17 Jan 2024 16:24

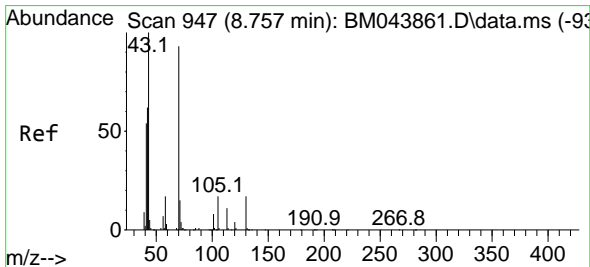
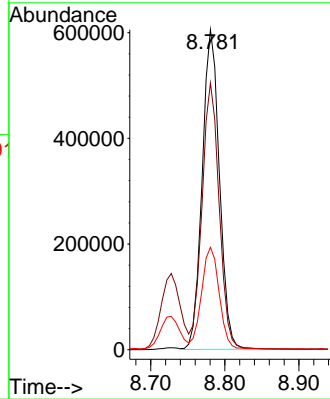
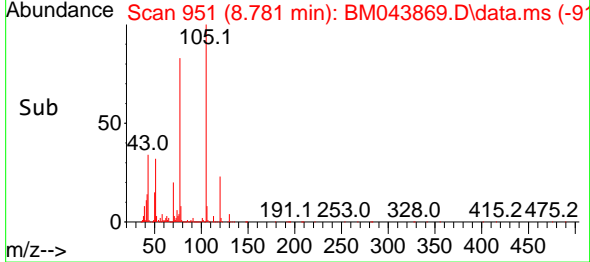
Instrument : BNA_M
 ClientSampleId : SLCS463



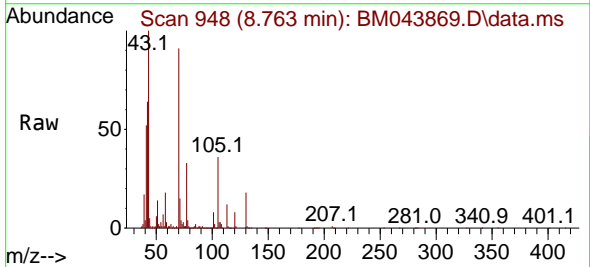
Tgt Ion: 105 Resp: 98035
 Ion Ratio Lower Upper
 105 100
 77 83.4 65.8 98.6
 51 32.0 25.3 37.9

Manual Integrations
 APPROVED

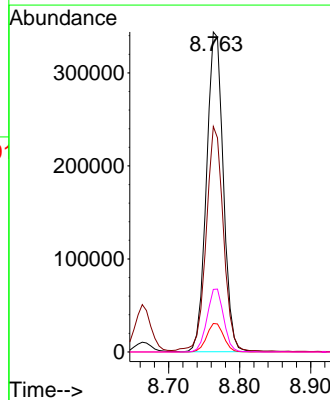
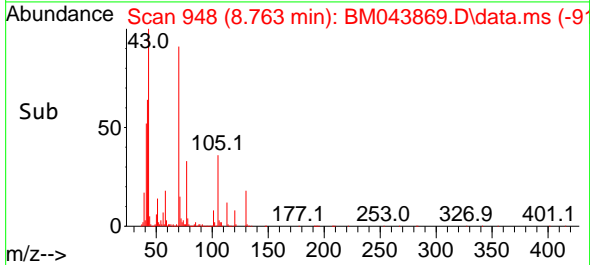
Reviewed By :Jagrut Upadhyay 01/18/2024
 Supervised By :mohammad ahmed 01/19/2024

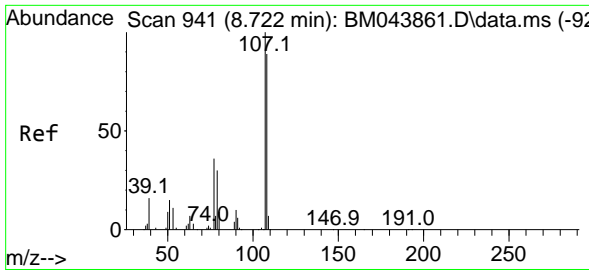


#17
 N-Nitroso-di-n-propylamine
 Concen: 36.118 ng/uI
 RT: 8.763 min Scan# 948
 Delta R.T. -0.006 min
 Lab File: BM043869.D
 Acq: 17 Jan 2024 16:24



Tgt Ion: 70 Resp: 566573
 Ion Ratio Lower Upper
 70 100
 42 70.5 52.3 78.5
 101 8.9 7.0 10.4
 130 19.5 15.9 23.9





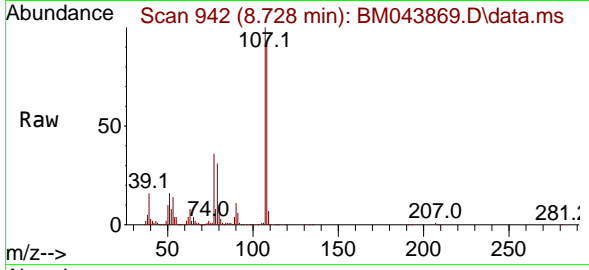
#18
 4-Methylphenol
 Concen: 34.549 ng/u1
 RT: 8.728 min Scan# 941
 Delta R.T. -0.012 min
 Lab File: BM043869.D
 Acq: 17 Jan 2024 16:24

Instrument :

BNA_M

ClientSampleId :

SLCS463

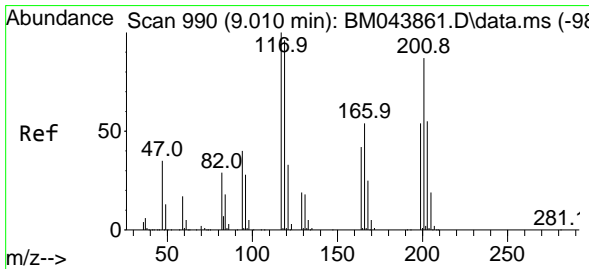
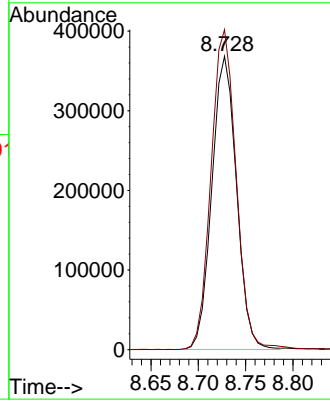
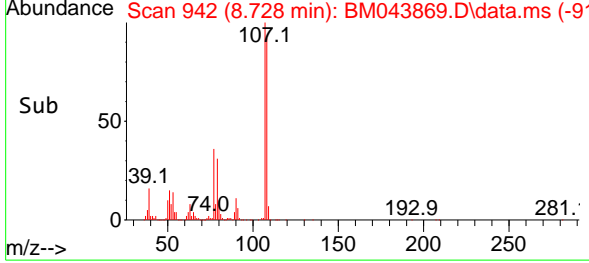


Tgt Ion:108 Resp: 66722
 Ion Ratio Lower Upper
 108 100
 107 109.0 85.3 127.9

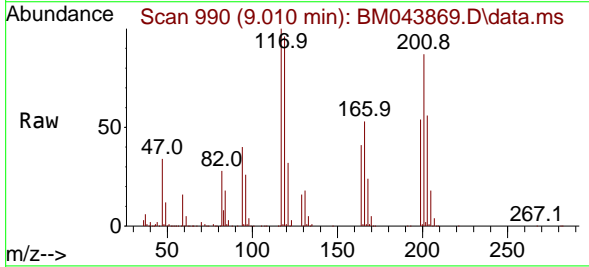
Manual Integrations

APPROVED

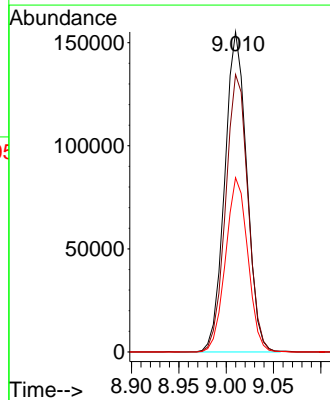
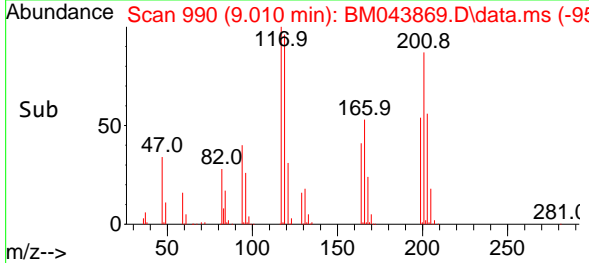
Reviewed By :Jagrut Upadhyay 01/18/2024
 Supervised By :mohammad ahmed 01/19/2024

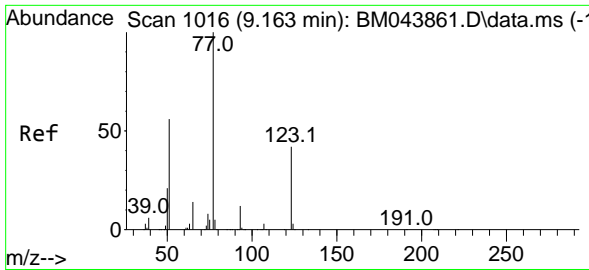


#19
 Hexachloroethane
 Concen: 33.545 ng/u1
 RT: 9.010 min Scan# 990
 Delta R.T. -0.006 min
 Lab File: BM043869.D
 Acq: 17 Jan 2024 16:24



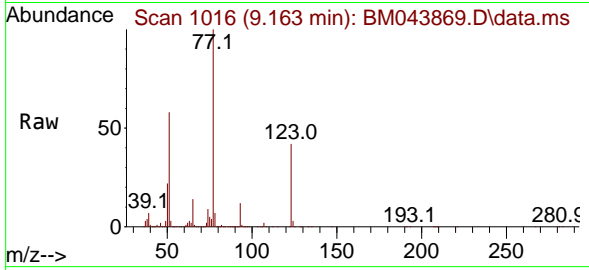
Tgt Ion:117 Resp: 252213
 Ion Ratio Lower Upper
 117 100
 201 86.7 69.9 104.9
 199 54.4 43.7 65.5





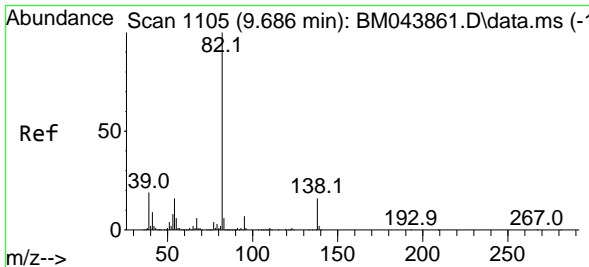
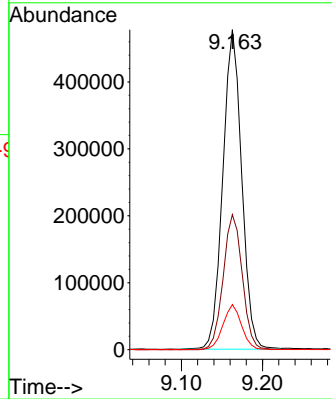
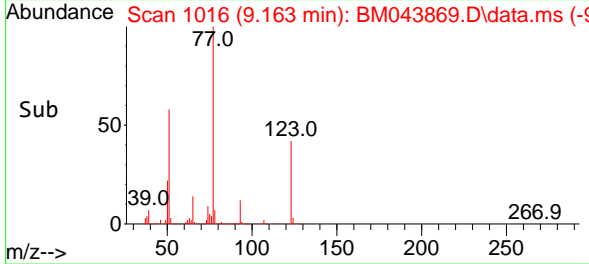
#22
 Nitrobenzene
 Concen: 34.386 ng/u1
 RT: 9.163 min Scan# 1016
 Delta R.T. -0.006 min
 Lab File: BM043869.D
 Acq: 17 Jan 2024 16:24

Instrument : BNA_M
 ClientSampleId : SLCS463

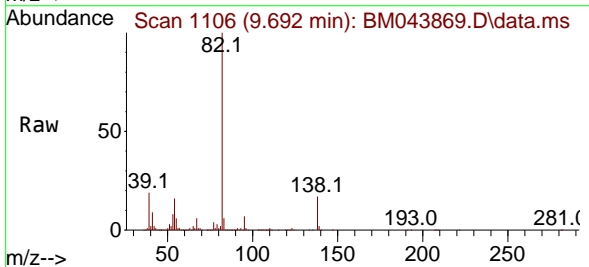


Tgt Ion: 77 Resp: 773068
 Ion Ratio Lower Upper
 77 100
 123 42.2 33.8 50.8
 65 14.1 11.1 16.7

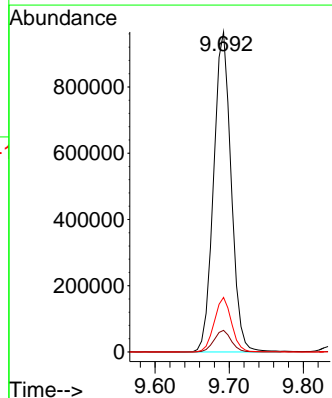
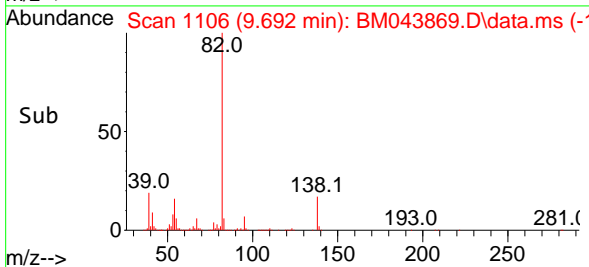
Manual Integrations
APPROVED
 Reviewed By :Jagrut Upadhyay 01/18/2024
 Supervised By :mohammad ahmed 01/19/2024

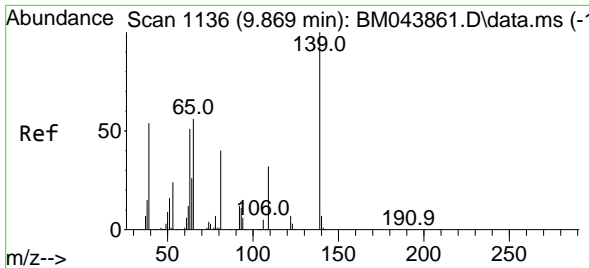


#23
 Isophorone
 Concen: 34.355 ng/u1
 RT: 9.692 min Scan# 1106
 Delta R.T. -0.006 min
 Lab File: BM043869.D
 Acq: 17 Jan 2024 16:24



Tgt Ion: 82 Resp: 1584317
 Ion Ratio Lower Upper
 82 100
 95 6.8 5.3 7.9
 138 17.1 14.0 21.0





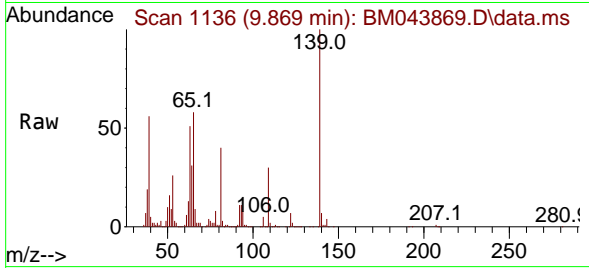
#25
 2-Nitrophenol
 Concen: 34.247 ng/ul
 RT: 9.869 min Scan# 1136
 Delta R.T. -0.012 min
 Lab File: BM043869.D
 Acq: 17 Jan 2024 16:24

Instrument :

BNA_M

ClientSampleId :

SLCS463

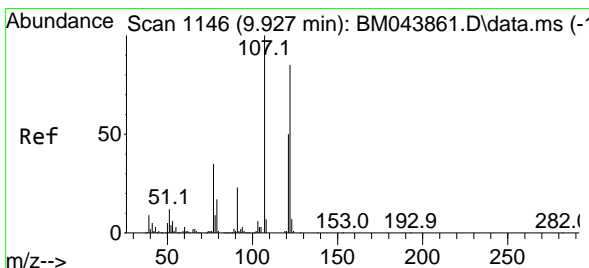
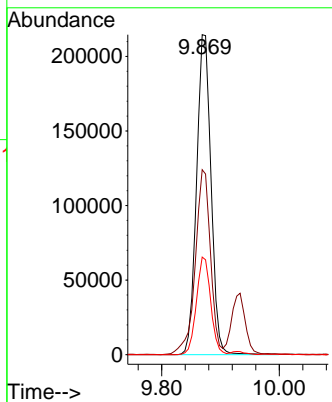
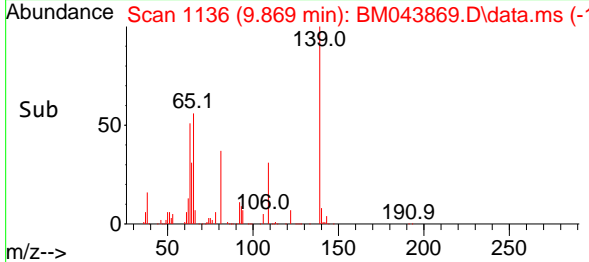


Tgt Ion:139 Resp: 36751
 Ion Ratio Lower Upper
 139 100
 65 57.8 41.8 62.8
 109 30.5 23.1 34.7

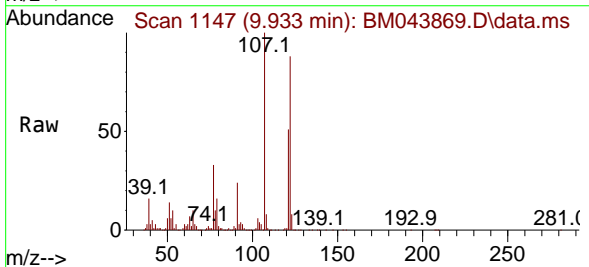
Manual Integrations

APPROVED

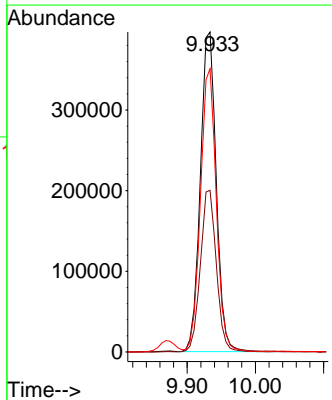
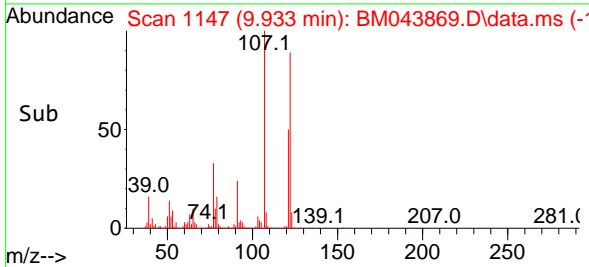
Reviewed By :Jagrut Upadhyay 01/18/2024
 Supervised By :mohammad ahmed 01/19/2024

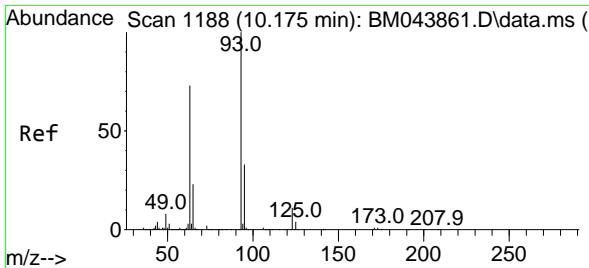


#26
 2,4-Dimethylphenol
 Concen: 30.960 ng/ul
 RT: 9.933 min Scan# 1147
 Delta R.T. -0.006 min
 Lab File: BM043869.D
 Acq: 17 Jan 2024 16:24



Tgt Ion:107 Resp: 644458
 Ion Ratio Lower Upper
 107 100
 121 50.5 40.2 60.4
 122 88.5 70.8 106.2





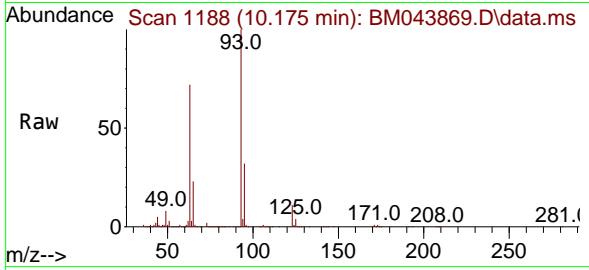
#27
 Bis(2-Chloroethoxy)methane
 Concen: 33.678 ng/ul
 RT: 10.175 min Scan# 1188
 Delta R.T. -0.006 min
 Lab File: BM043869.D
 Acq: 17 Jan 2024 16:24

Instrument :

BNA_M

ClientSampleId :

SLCS463



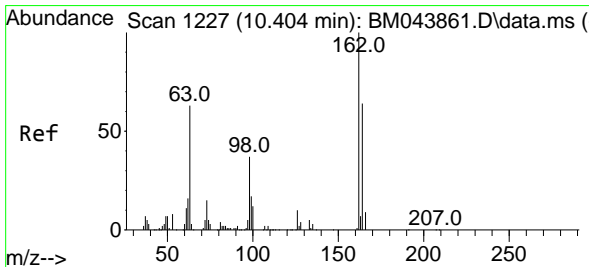
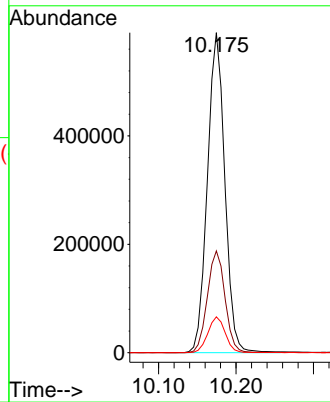
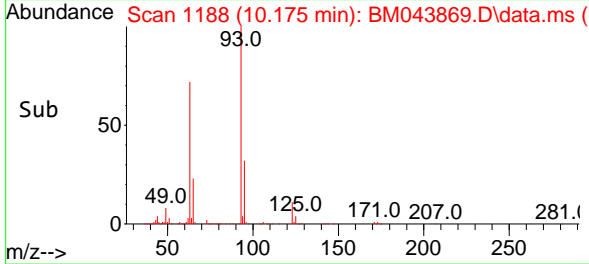
Tgt Ion: 93 Resp: 92114
 Ion Ratio Lower Upper
 93 100
 95 31.8 26.2 39.4
 123 11.2 9.2 13.8

Manual Integrations

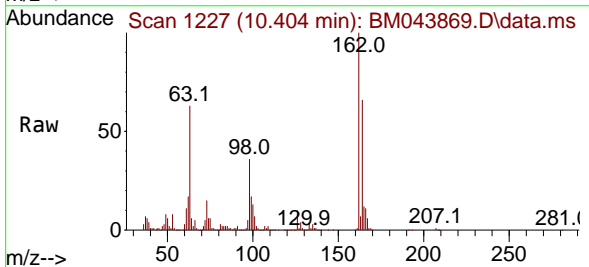
APPROVED

Reviewed By :Jagrut Upadhyay 01/18/2024

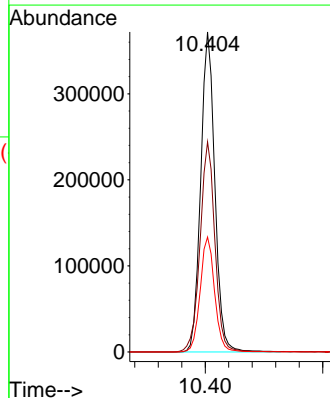
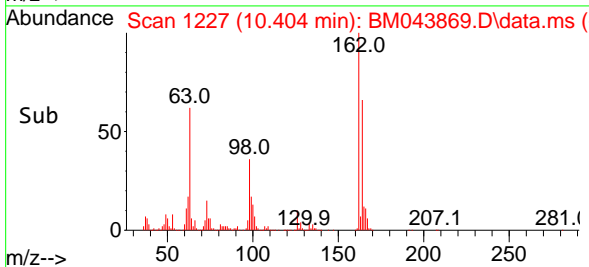
Supervised By :mohammad ahmed 01/19/2024

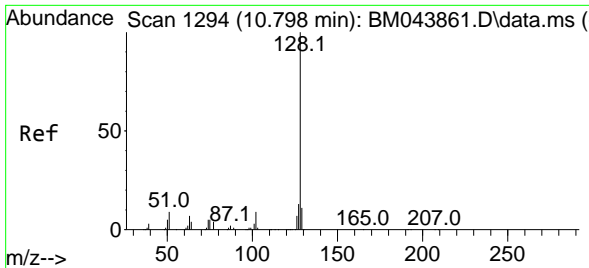


#29
 2,4-Dichlorophenol
 Concen: 34.401 ng/ul
 RT: 10.404 min Scan# 1227
 Delta R.T. -0.012 min
 Lab File: BM043869.D
 Acq: 17 Jan 2024 16:24



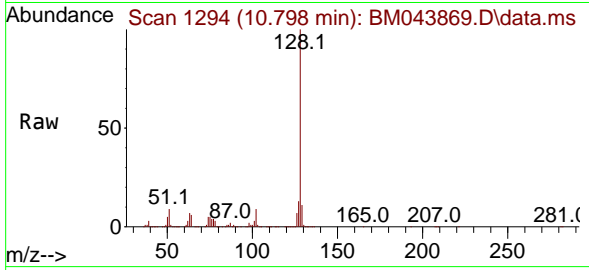
Tgt Ion:162 Resp: 620115
 Ion Ratio Lower Upper
 162 100
 164 65.7 52.3 78.5
 98 35.9 28.5 42.7





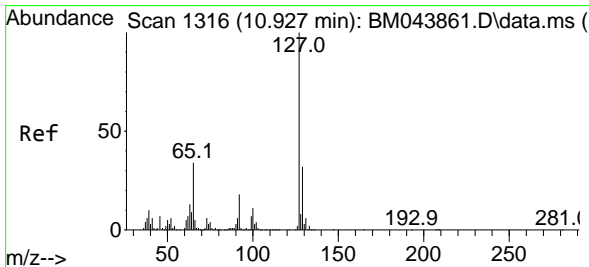
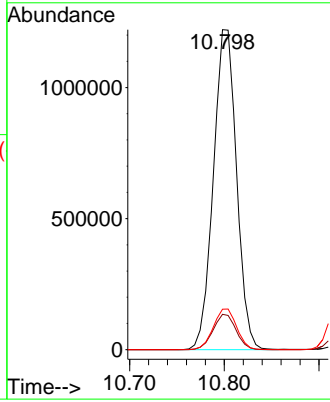
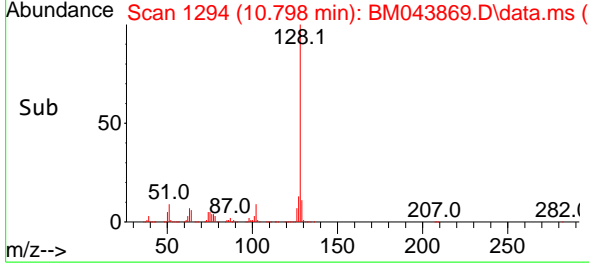
#30
 Naphthalene
 Concen: 33.221 ng/uI
 RT: 10.798 min Scan# 1294
 Delta R.T. -0.012 min
 Lab File: BM043869.D
 Acq: 17 Jan 2024 16:24

Instrument : BNA_M
 Client Sample Id : SLCS463

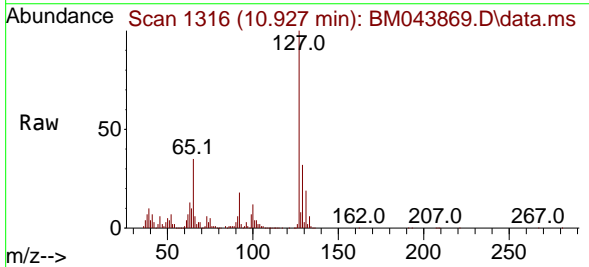


Tgt Ion:128 Resp: 207961
 Ion Ratio Lower Upper
 128 100
 129 11.1 8.8 13.2
 127 12.6 10.2 15.4

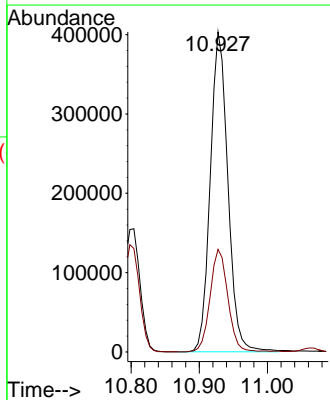
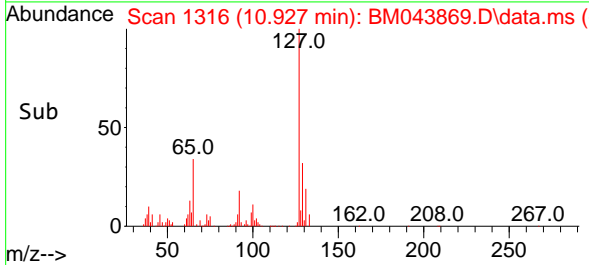
Manual Integrations
APPROVED
 Reviewed By :Jagrut Upadhyay 01/18/2024
 Supervised By :mohammad ahmed 01/19/2024

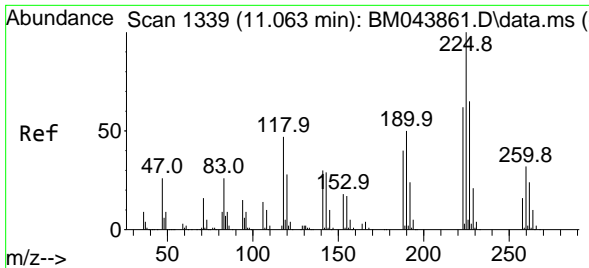


#32
 4-Chloroaniline
 Concen: 25.935 ng/uI
 RT: 10.927 min Scan# 1316
 Delta R.T. -0.012 min
 Lab File: BM043869.D
 Acq: 17 Jan 2024 16:24



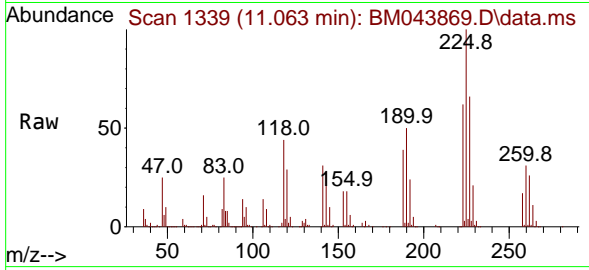
Tgt Ion:127 Resp: 725794
 Ion Ratio Lower Upper
 127 100
 129 32.1 25.8 38.6





#33
 Hexachlorobutadiene
 Concen: 32.176 ng/u1
 RT: 11.063 min Scan# 11
 Delta R.T. -0.012 min
 Lab File: BM043869.D
 Acq: 17 Jan 2024 16:24

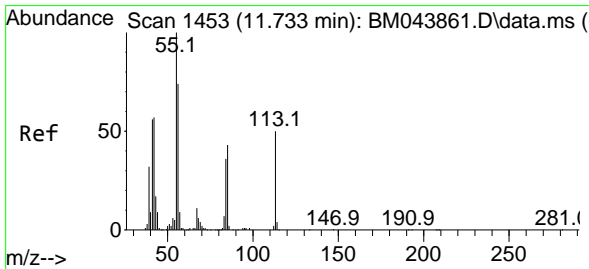
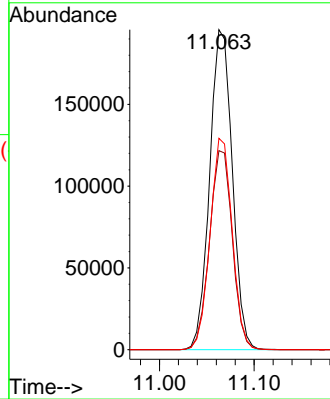
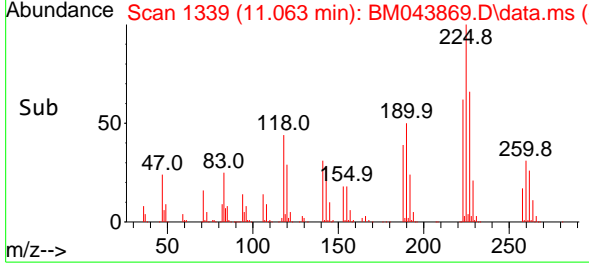
Instrument :
 BNA_M
 ClientSampleId :
 SLCS463



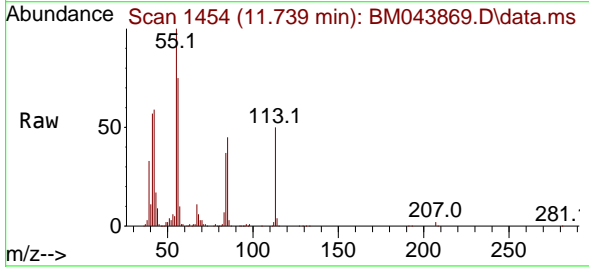
Tgt Ion:225 Resp: 32455
 Ion Ratio Lower Upper
 225 100
 223 62.2 50.6 75.8
 227 66.1 50.8 76.2

Manual Integrations
 APPROVED

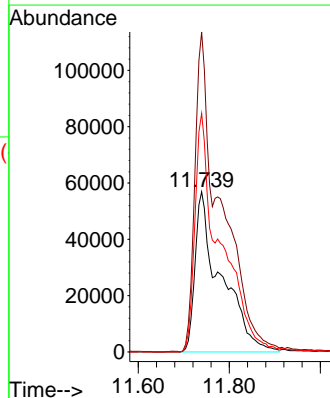
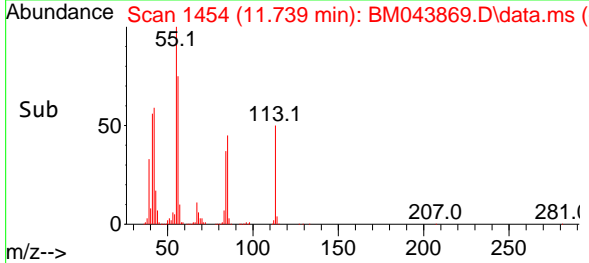
Reviewed By :Jagrut Upadhyay 01/18/2024
 Supervised By :mohammad ahmed 01/19/2024

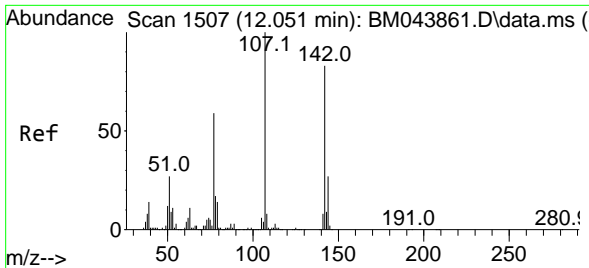


#34
 Caprolactam
 Concen: 34.545 ng/u1 m
 RT: 11.739 min Scan# 1454
 Delta R.T. -0.006 min
 Lab File: BM043869.D
 Acq: 17 Jan 2024 16:24



Tgt Ion:113 Resp: 224212
 Ion Ratio Lower Upper
 113 100
 55 199.8 147.3 220.9
 56 149.0 109.9 164.9





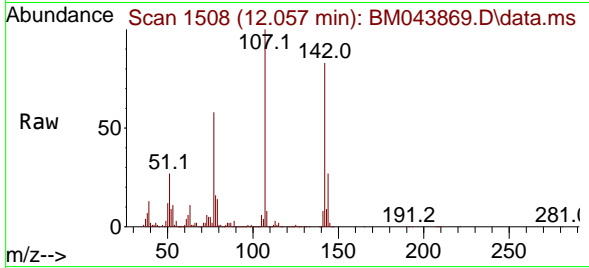
#35
 4-Chloro-3-methylphenol
 Concen: 35.268 ng/ul
 RT: 12.057 min Scan# 1507
 Delta R.T. -0.006 min
 Lab File: BM043869.D
 Acq: 17 Jan 2024 16:24

Instrument :

BNA_M

ClientSampleId :

SLCS463

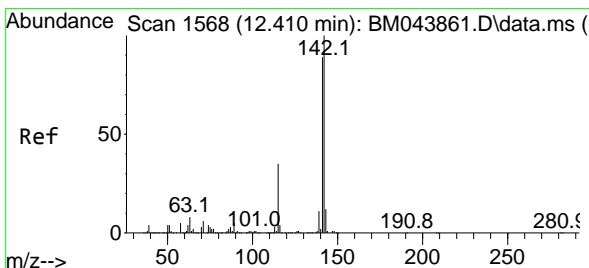
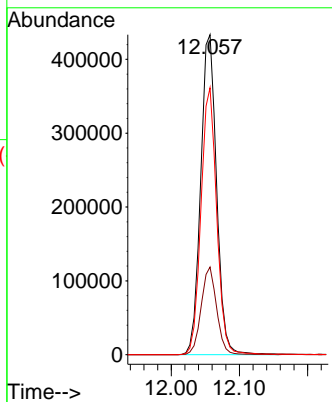
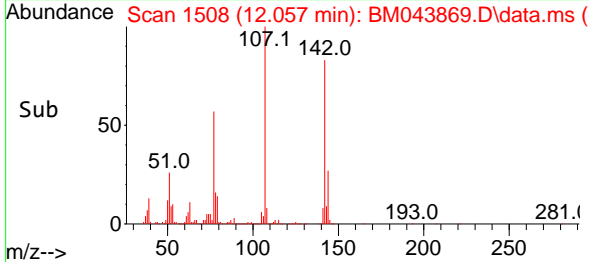


Tgt Ion:107 Resp: 704436
 Ion Ratio Lower Upper
 107 100
 144 27.4 21.8 32.6
 142 83.4 65.9 98.9

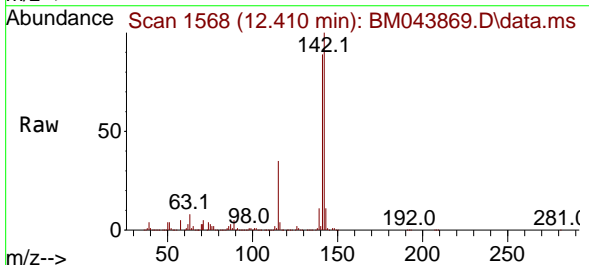
Manual Integrations

APPROVED

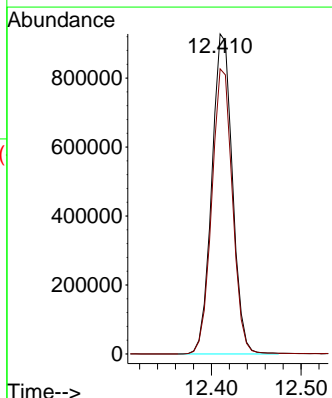
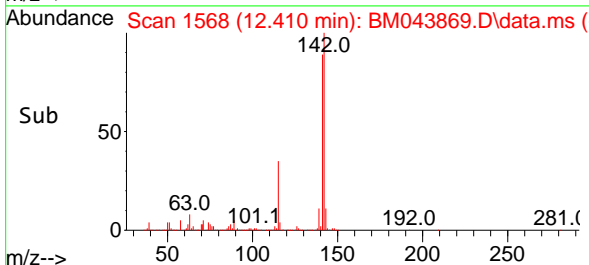
Reviewed By :Jagrut Upadhyay 01/18/2024
 Supervised By :mohammad ahmed 01/19/2024

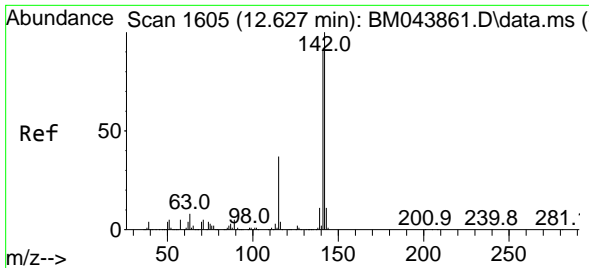


#36
 2-Methylnaphthalene
 Concen: 33.893 ng/ul
 RT: 12.410 min Scan# 1568
 Delta R.T. -0.012 min
 Lab File: BM043869.D
 Acq: 17 Jan 2024 16:24



Tgt Ion:142 Resp: 1479005
 Ion Ratio Lower Upper
 142 100
 141 89.1 71.4 107.0





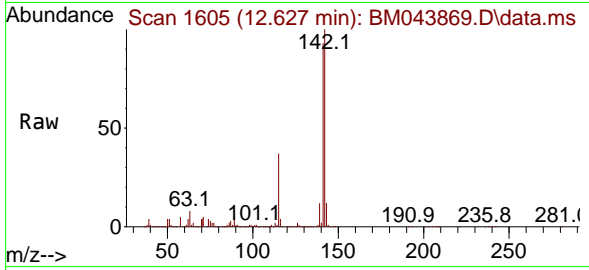
#37
 1-Methylnaphthalene
 Concen: 34.014 ng/ul
 RT: 12.627 min Scan# 1605
 Delta R.T. -0.012 min
 Lab File: BM043869.D
 Acq: 17 Jan 2024 16:24

Instrument :

BNA_M

ClientSampleId :

SLCS463

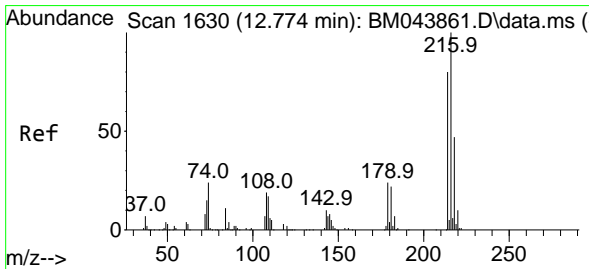
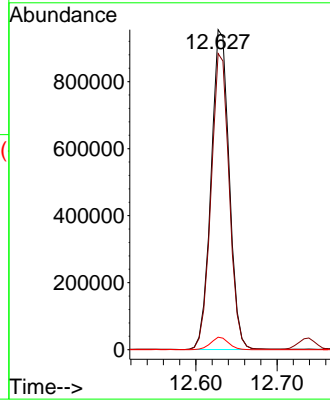
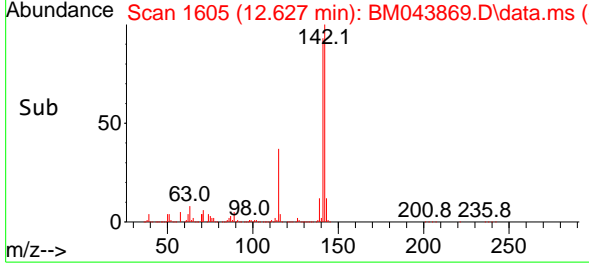


Tgt Ion:142 Resp: 1479964
 Ion Ratio Lower Upper
 142 100
 141 92.5 73.4 110.2
 116 3.9 3.0 4.4

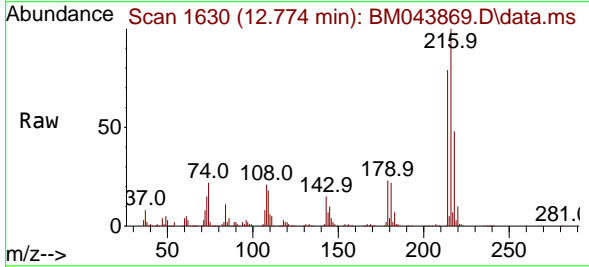
Manual Integrations

APPROVED

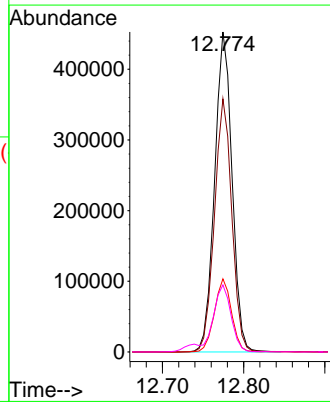
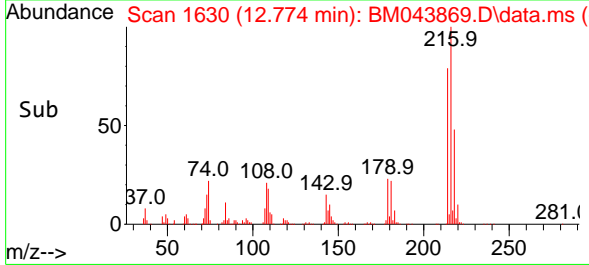
Reviewed By :Jagrut Upadhyay 01/18/2024
 Supervised By :mohammad ahmed 01/19/2024

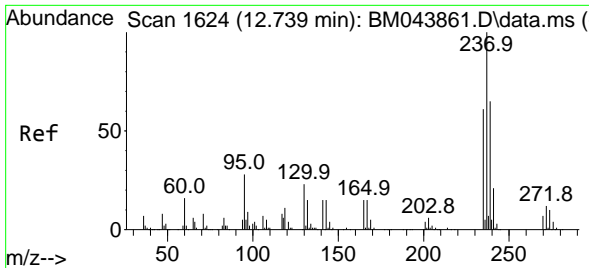


#39
 1,2,4,5-Tetrachlorobenzene
 Concen: 32.285 ng/ul
 RT: 12.774 min Scan# 1630
 Delta R.T. -0.012 min
 Lab File: BM043869.D
 Acq: 17 Jan 2024 16:24



Tgt Ion:216 Resp: 675065
 Ion Ratio Lower Upper
 216 100
 214 79.1 64.3 96.5
 179 22.8 17.8 26.8
 108 21.0 15.5 23.3





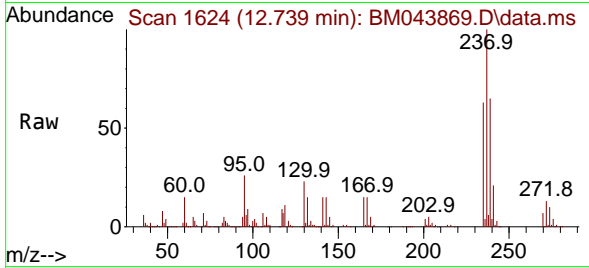
#40
 Hexachlorocyclopentadiene
 Concen: 24.694 ng/ul
 RT: 12.739 min Scan# 1624
 Delta R.T. -0.006 min
 Lab File: BM043869.D
 Acq: 17 Jan 2024 16:24

Instrument :

BNA_M

ClientSampleId :

SLCS463

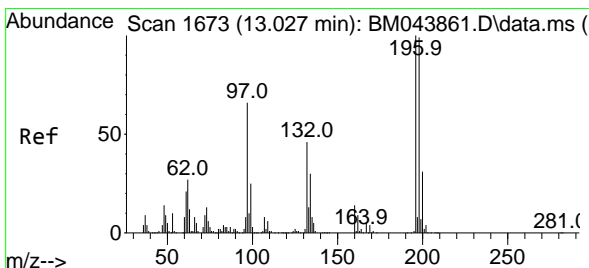
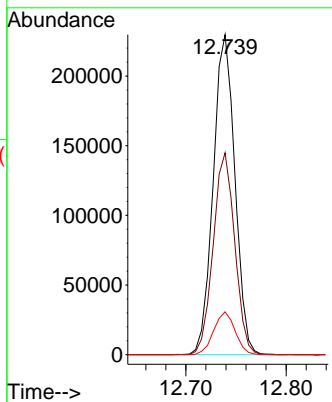
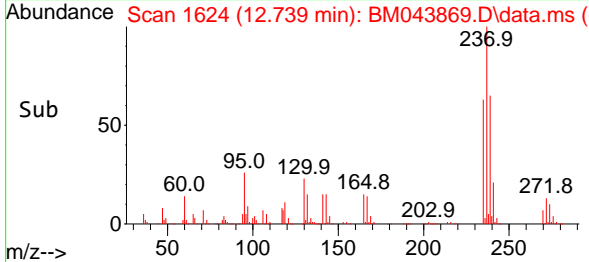


Tgt Ion:237 Resp: 345339
 Ion Ratio Lower Upper
 237 100
 235 63.1 49.8 74.8
 272 13.4 9.8 14.8

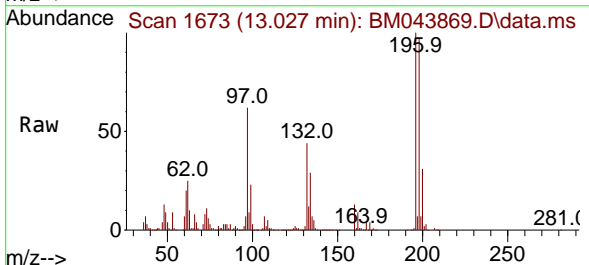
Manual Integrations

APPROVED

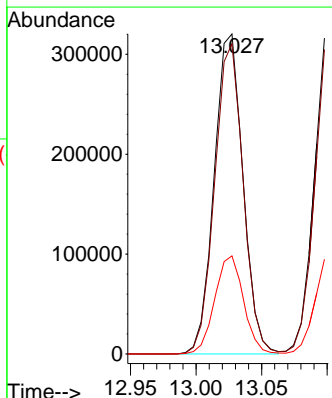
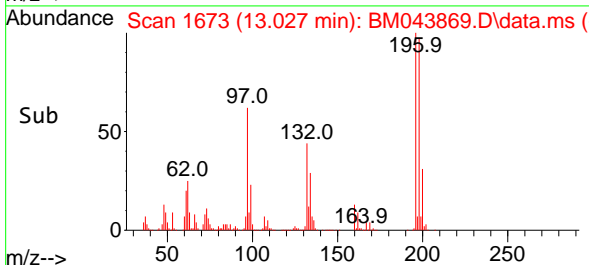
Reviewed By :Jagrut Upadhyay 01/18/2024
 Supervised By :mohammad ahmed 01/19/2024

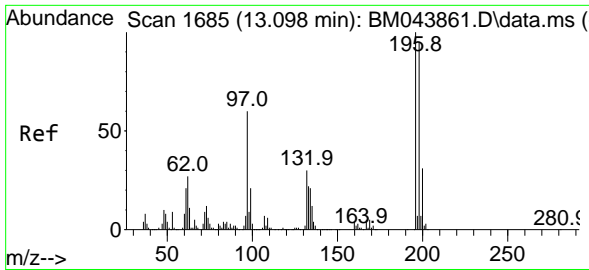


#41
 2,4,6-Trichlorophenol
 Concen: 32.987 ng/ul
 RT: 13.027 min Scan# 1673
 Delta R.T. -0.006 min
 Lab File: BM043869.D
 Acq: 17 Jan 2024 16:24



Tgt Ion:196 Resp: 489737
 Ion Ratio Lower Upper
 196 100
 198 97.0 76.3 114.5
 200 30.6 24.6 36.8





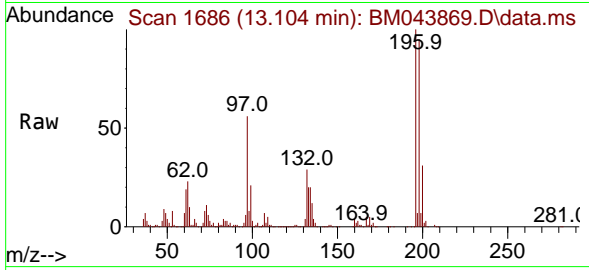
#42
 2,4,5-Trichlorophenol
 Concen: 33.876 ng/u1
 RT: 13.104 min Scan# 1686
 Delta R.T. -0.006 min
 Lab File: BM043869.D
 Acq: 17 Jan 2024 16:24

Instrument :

BNA_M

ClientSampleId :

SLCS463

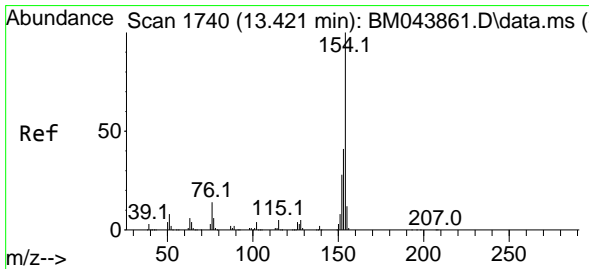
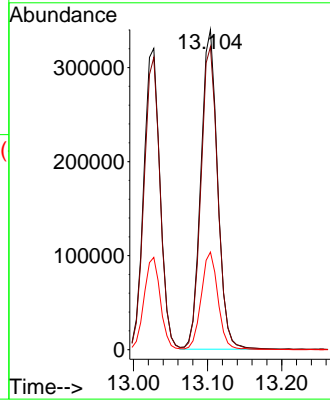
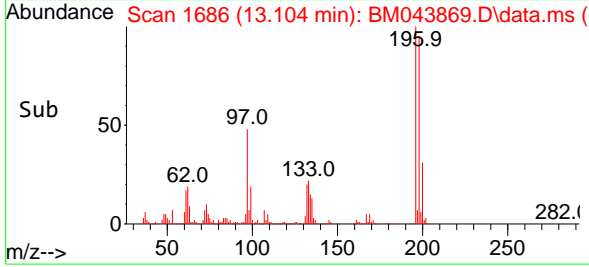


Tgt Ion:196 Resp: 53403
 Ion Ratio Lower Upper
 196 100
 198 94.6 76.6 114.8
 200 30.5 24.4 36.6

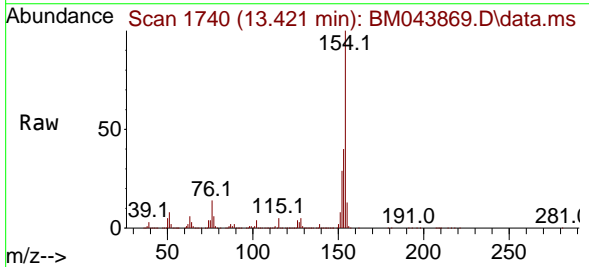
Manual Integrations

APPROVED

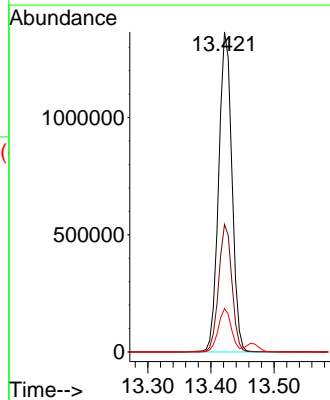
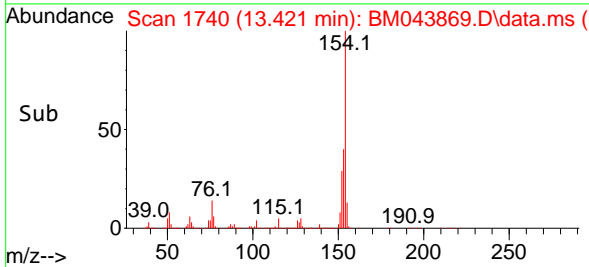
Reviewed By :Jagrut Upadhyay 01/18/2024
 Supervised By :mohammad ahmed 01/19/2024

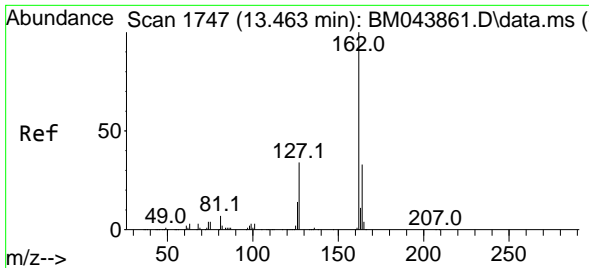


#43
 1,1'-Biphenyl
 Concen: 33.115 ng/u1
 RT: 13.421 min Scan# 1740
 Delta R.T. -0.012 min
 Lab File: BM043869.D
 Acq: 17 Jan 2024 16:24



Tgt Ion:154 Resp: 1988080
 Ion Ratio Lower Upper
 154 100
 153 39.8 31.9 47.9
 76 13.5 10.4 15.6





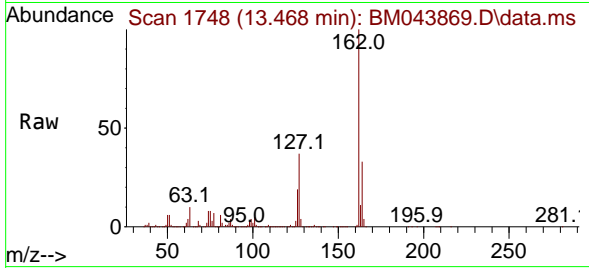
#44
 2-Chloronaphthalene
 Concen: 33.335 ng/ul
 RT: 13.468 min Scan# 1748
 Delta R.T. -0.006 min
 Lab File: BM043869.D
 Acq: 17 Jan 2024 16:24

Instrument :

BNA_M

ClientSampleId :

SLCS463

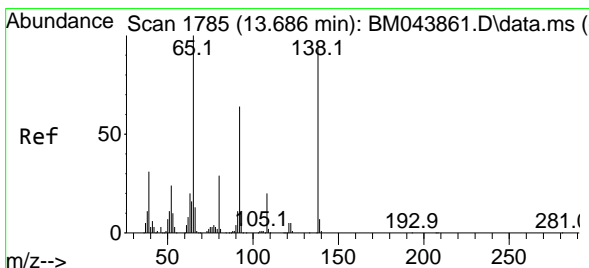
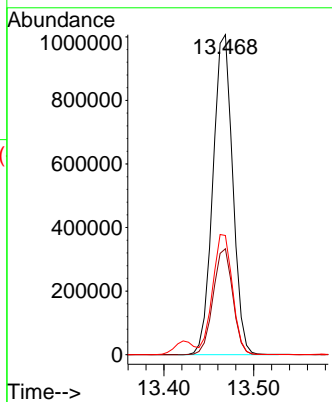
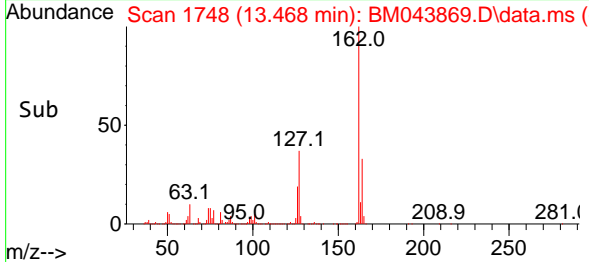


Tgt Ion:162 Resp: 1542080
 Ion Ratio Lower Upper
 162 100
 164 33.1 25.9 38.9
 127 37.2 30.7 46.1

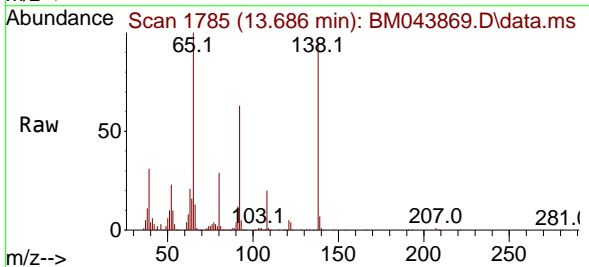
Manual Integrations

APPROVED

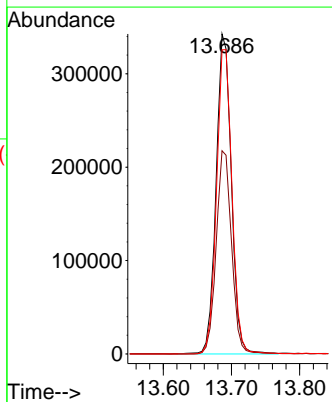
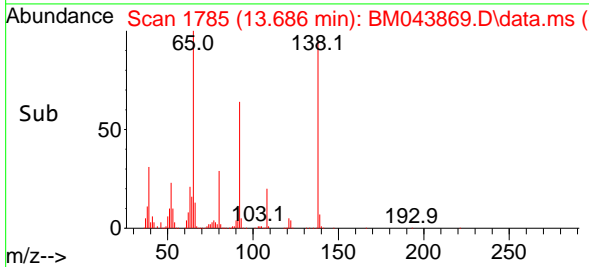
Reviewed By :Jagrut Upadhyay 01/18/2024
 Supervised By :mohammad ahmed 01/19/2024

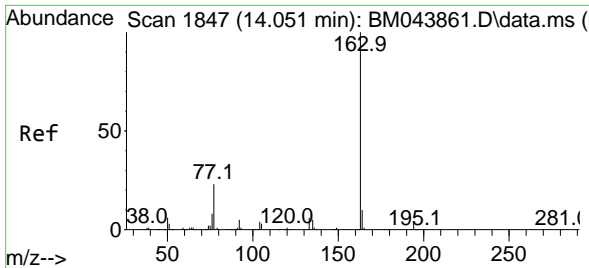


#45
 2-Nitroaniline
 Concen: 36.492 ng/ul
 RT: 13.686 min Scan# 1785
 Delta R.T. -0.012 min
 Lab File: BM043869.D
 Acq: 17 Jan 2024 16:24



Tgt Ion: 65 Resp: 532785
 Ion Ratio Lower Upper
 65 100
 92 63.5 52.3 78.5
 138 95.0 82.6 123.8





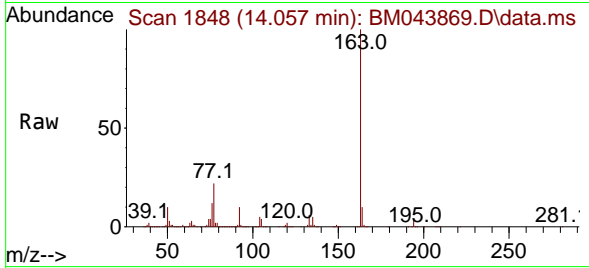
#47
 Dimethylphthalate
 Concen: 33.585 ng/ul
 RT: 14.057 min Scan# 1848
 Delta R.T. -0.006 min
 Lab File: BM043869.D
 Acq: 17 Jan 2024 16:24

Instrument :

BNA_M

ClientSampleId :

SLCS463

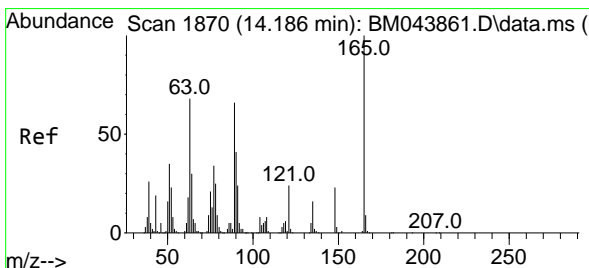
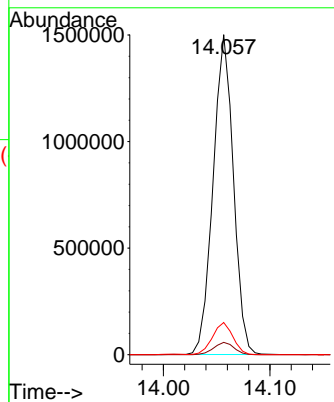
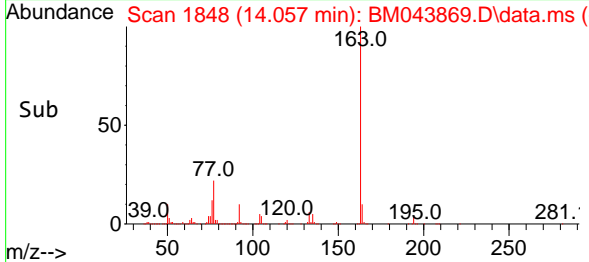


Tgt Ion:163 Resp: 198819
 Ion Ratio Lower Upper
 163 100
 194 3.8 3.1 4.7
 164 10.0 8.1 12.1

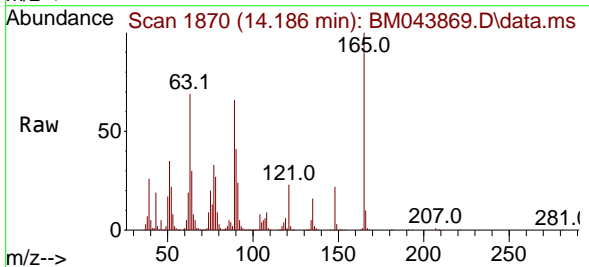
Manual Integrations

APPROVED

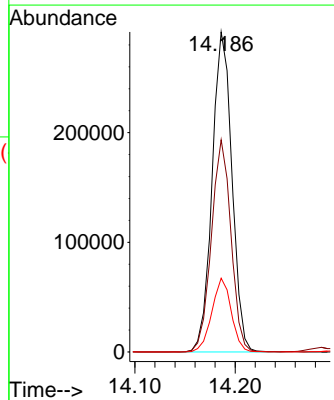
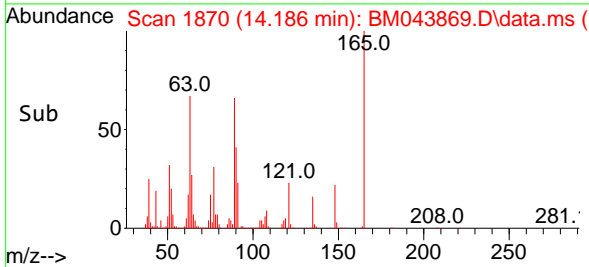
Reviewed By :Jagrut Upadhyay 01/18/2024
 Supervised By :mohammad ahmed 01/19/2024

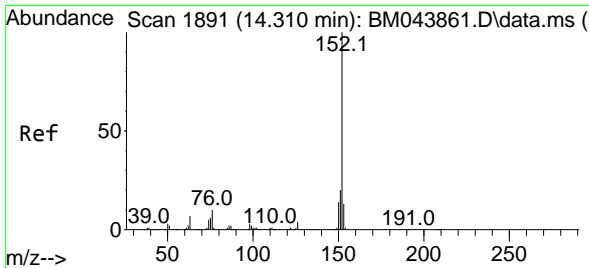


#48
 2,6-Dinitrotoluene
 Concen: 34.168 ng/ul
 RT: 14.186 min Scan# 1870
 Delta R.T. -0.006 min
 Lab File: BM043869.D
 Acq: 17 Jan 2024 16:24



Tgt Ion:165 Resp: 400875
 Ion Ratio Lower Upper
 165 100
 89 66.3 49.5 74.3
 121 23.1 17.8 26.6





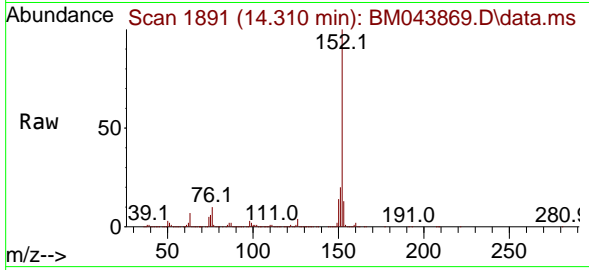
#50
 Acenaphthylene
 Concen: 33.997 ng/uI
 RT: 14.310 min Scan# 1891
 Delta R.T. -0.012 min
 Lab File: BM043869.D
 Acq: 17 Jan 2024 16:24

Instrument :

BNA_M

ClientSampleId :

SLCS463

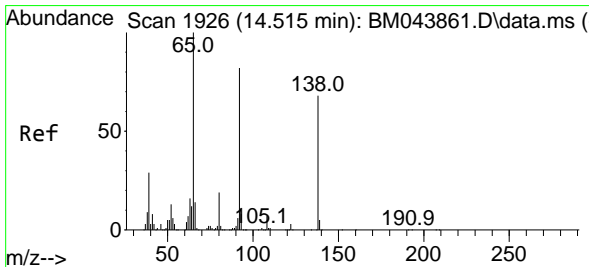
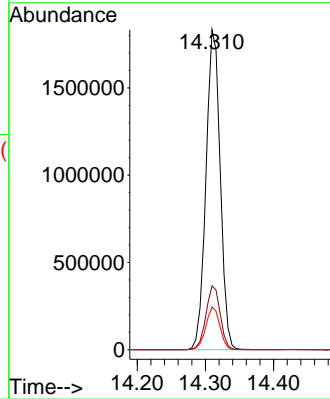
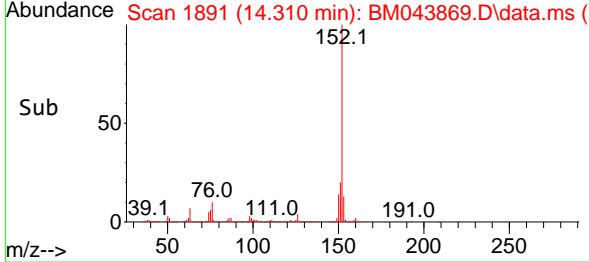


Tgt Ion:152 Resp: 266331
 Ion Ratio Lower Upper
 152 100
 151 19.9 15.9 23.9
 153 13.3 10.5 15.7

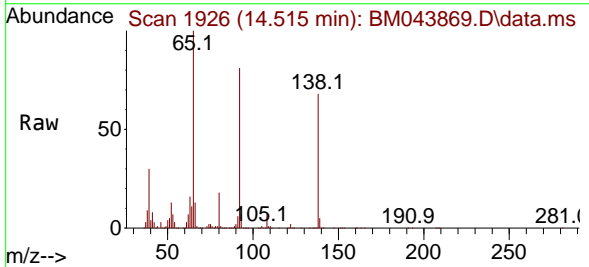
Manual Integrations

APPROVED

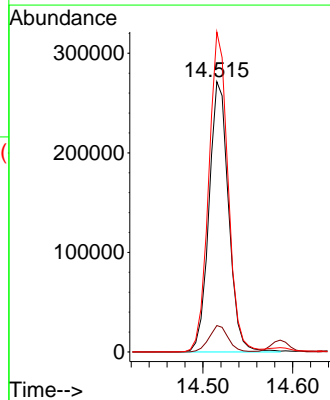
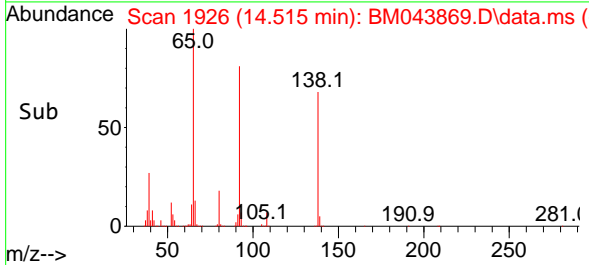
Reviewed By :Jagrut Upadhyay 01/18/2024
 Supervised By :mohammad ahmed 01/19/2024

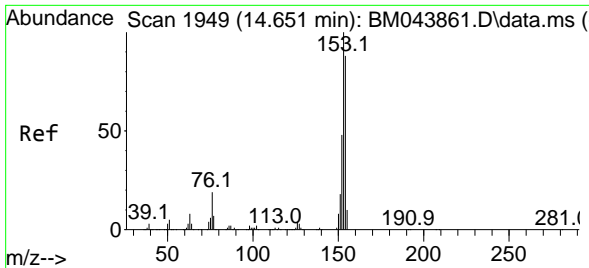


#51
 3-Nitroaniline
 Concen: 33.141 ng/uI
 RT: 14.515 min Scan# 1926
 Delta R.T. -0.006 min
 Lab File: BM043869.D
 Acq: 17 Jan 2024 16:24



Tgt Ion:138 Resp: 411166
 Ion Ratio Lower Upper
 138 100
 108 9.8 7.9 11.9
 92 118.4 92.2 138.2





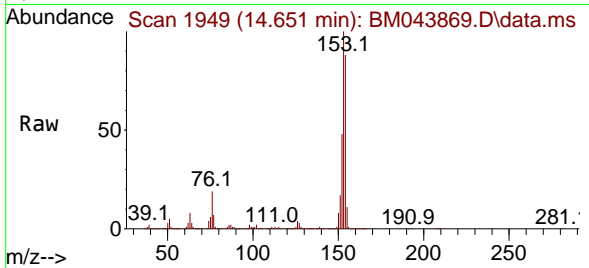
#52
 Acenaphthene
 Concen: 33.703 ng/u1
 RT: 14.651 min Scan# 1949
 Delta R.T. -0.006 min
 Lab File: BM043869.D
 Acq: 17 Jan 2024 16:24

Instrument :

BNA_M

ClientSampleId :

SLCS463

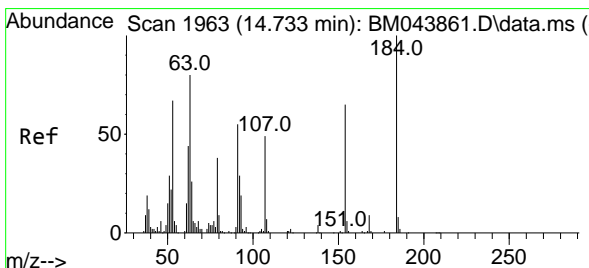
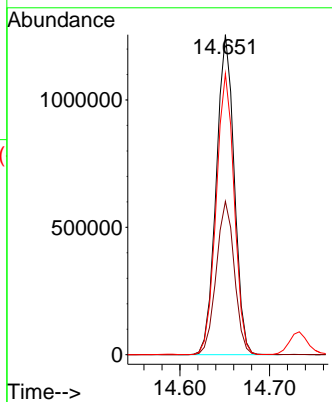
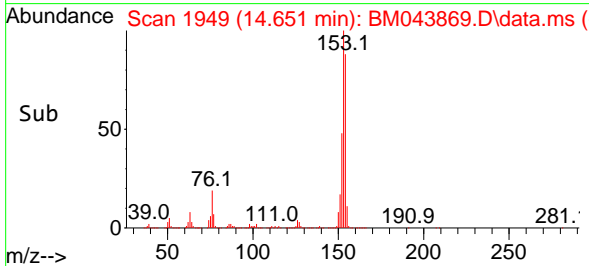


Tgt Ion:153 Resp: 1750838
 Ion Ratio Lower Upper
 153 100
 152 47.9 38.5 57.7
 154 87.8 71.2 106.8

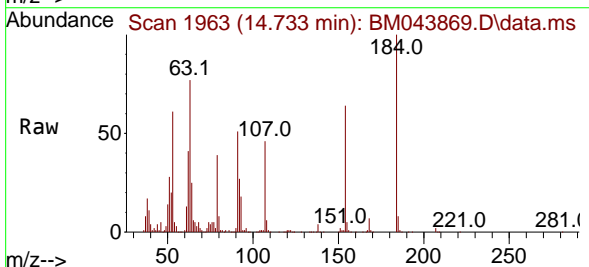
Manual Integrations

APPROVED

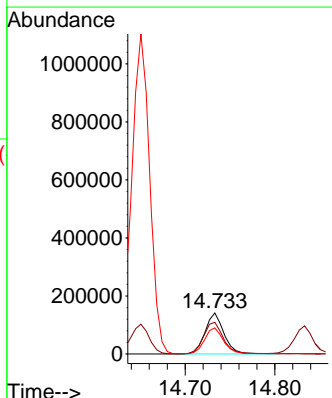
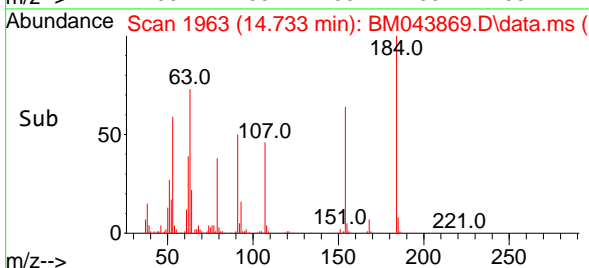
Reviewed By :Jagrut Upadhyay 01/18/2024
 Supervised By :mohammad ahmed 01/19/2024

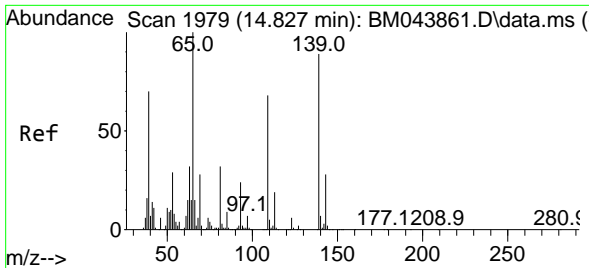


#53
 2,4-Dinitrophenol
 Concen: 28.293 ng/u1
 RT: 14.733 min Scan# 1963
 Delta R.T. -0.006 min
 Lab File: BM043869.D
 Acq: 17 Jan 2024 16:24



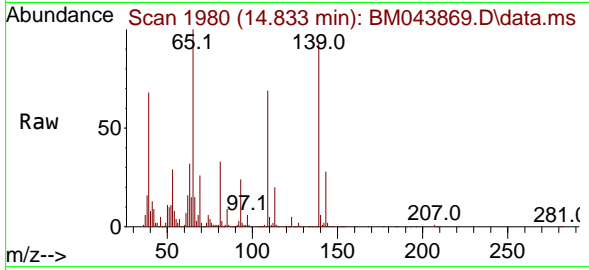
Tgt Ion:184 Resp: 206281
 Ion Ratio Lower Upper
 184 100
 63 77.4 60.0 90.0
 154 63.8 51.7 77.5





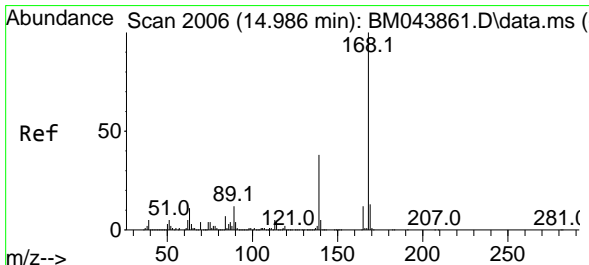
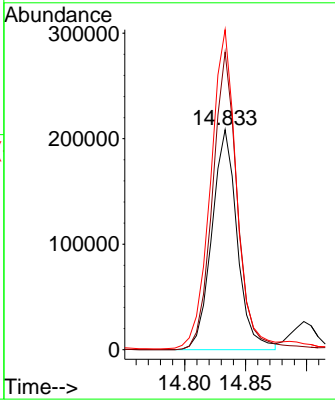
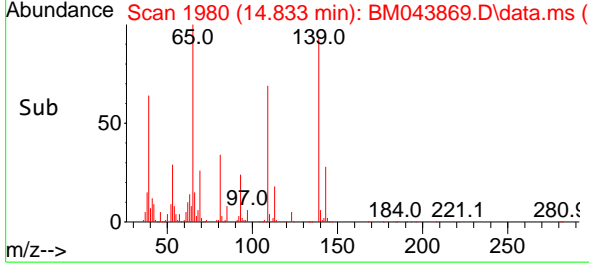
#55
 4-Nitrophenol
 Concen: 34.336 ng/uI
 RT: 14.833 min Scan# 1979
 Delta R.T. -0.006 min
 Lab File: BM043869.D
 Acq: 17 Jan 2024 16:24

Instrument : BNA_M
 ClientSampleId : SLCS463

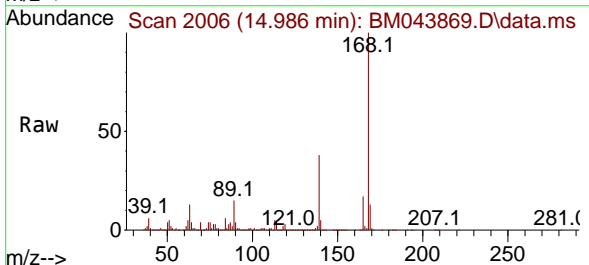


Tgt Ion:109 Resp: 301760
 Ion Ratio Lower Upper
 109 100
 139 135.3 112.6 168.8
 65 145.4 118.5 177.7

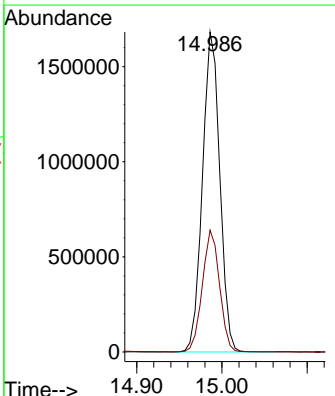
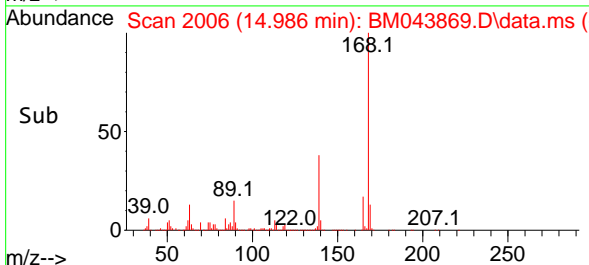
Manual Integrations
APPROVED
 Reviewed By :Jagrut Upadhyay 01/18/2024
 Supervised By :mohammad ahmed 01/19/2024

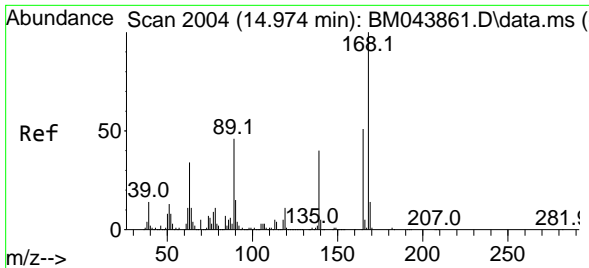


#56
 Dibenzofuran
 Concen: 34.001 ng/uI
 RT: 14.986 min Scan# 2006
 Delta R.T. -0.006 min
 Lab File: BM043869.D
 Acq: 17 Jan 2024 16:24



Tgt Ion:168 Resp: 2373170
 Ion Ratio Lower Upper
 168 100
 139 38.0 30.2 45.2





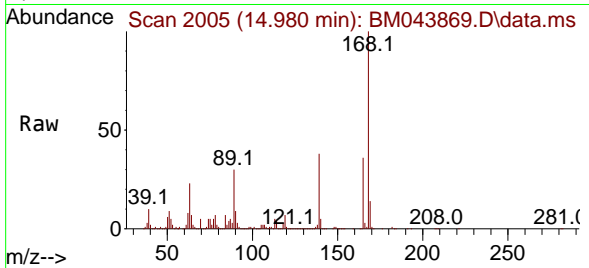
#57
 2,4-Dinitrotoluene
 Concen: 35.541 ng/ul
 RT: 14.980 min Scan# 2005
 Delta R.T. -0.000 min
 Lab File: BM043869.D
 Acq: 17 Jan 2024 16:24

Instrument :

BNA_M

ClientSampleId :

SLCS463

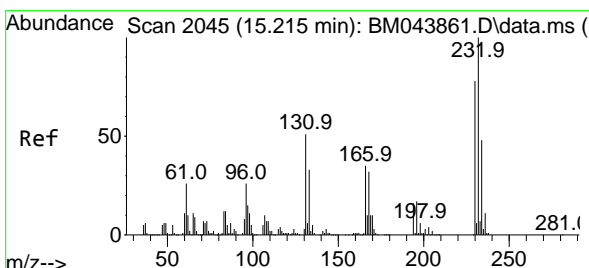
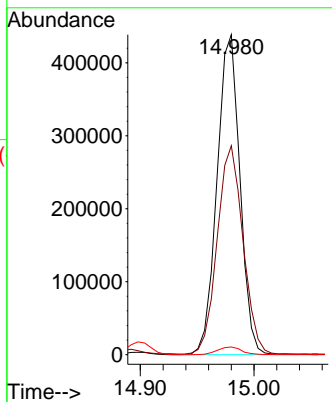
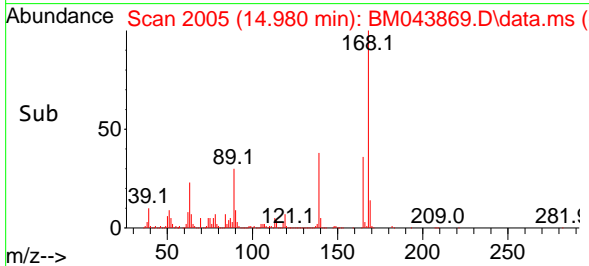


Tgt Ion:165 Resp: 614264
 Ion Ratio Lower Upper
 165 100
 63 65.3 45.7 68.5
 182 2.4 2.0 3.0

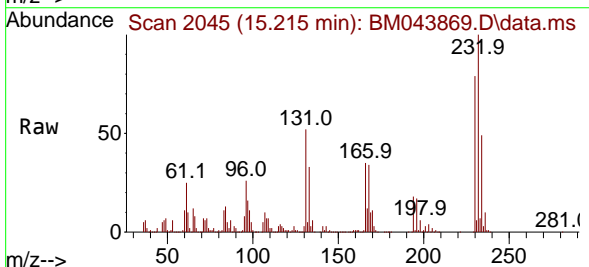
Manual Integrations

APPROVED

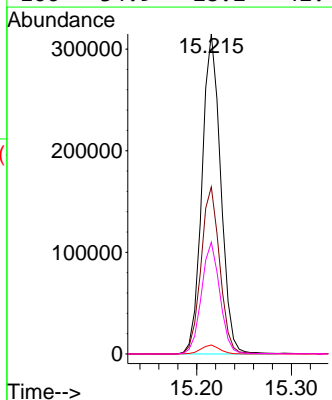
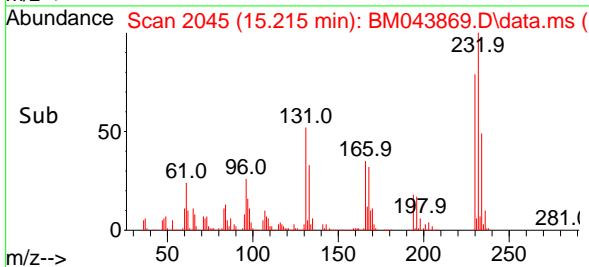
Reviewed By :Jagrut Upadhyay 01/18/2024
 Supervised By :mohammad ahmed 01/19/2024

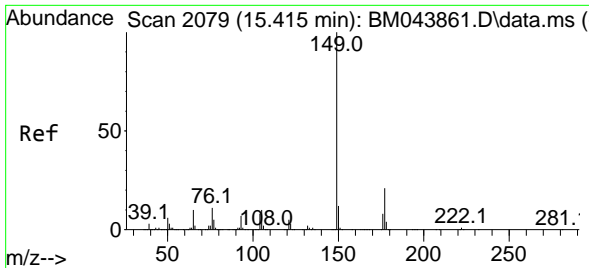


#58
 2,3,4,6-Tetrachlorophenol
 Concen: 32.937 ng/ul
 RT: 15.215 min Scan# 2045
 Delta R.T. -0.006 min
 Lab File: BM043869.D
 Acq: 17 Jan 2024 16:24



Tgt Ion:232 Resp: 432622
 Ion Ratio Lower Upper
 232 100
 131 52.2 43.3 64.9
 130 2.8 2.2 3.2
 166 34.9 28.2 42.4





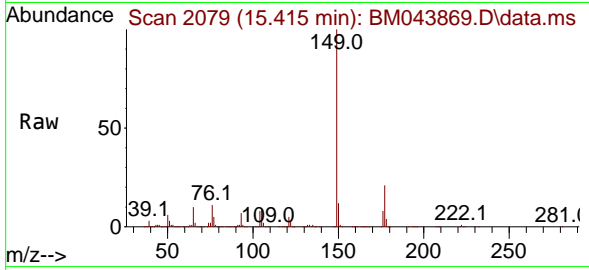
#59
 Diethylphthalate
 Concen: 32.841 ng/ul
 RT: 15.415 min Scan# 2072584
 Delta R.T. -0.006 min
 Lab File: BM043869.D
 Acq: 17 Jan 2024 16:24

Instrument :

BNA_M

ClientSampled :

SLCS463

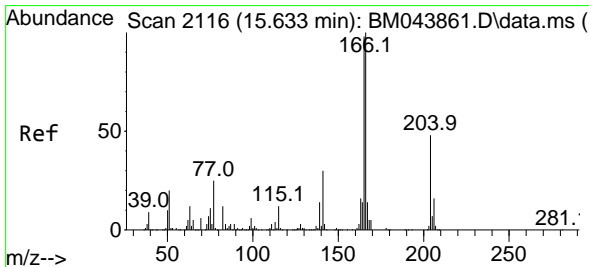
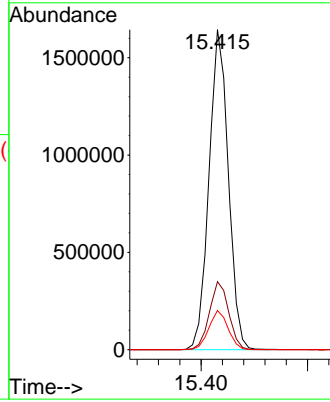
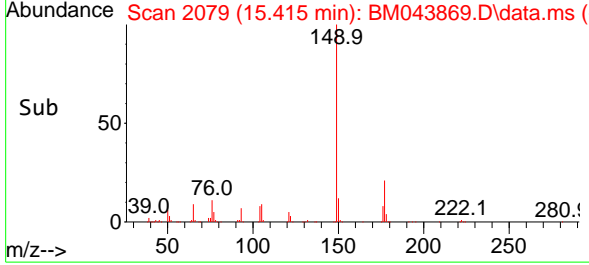


Tgt Ion:149 Resp: 2072584
 Ion Ratio Lower Upper
 149 100
 177 21.3 17.1 25.7
 150 12.3 9.7 14.5

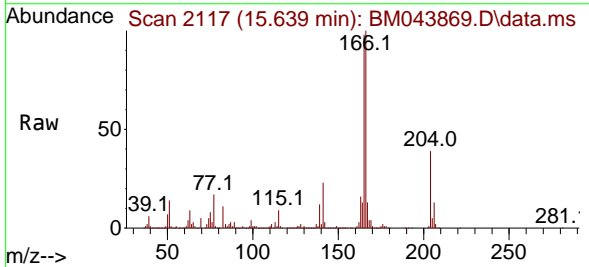
Manual Integrations

APPROVED

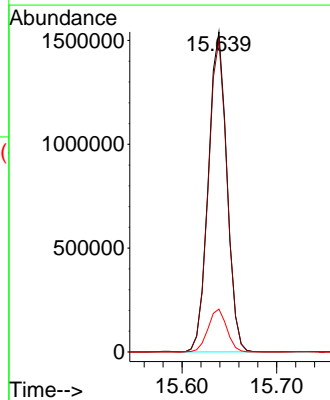
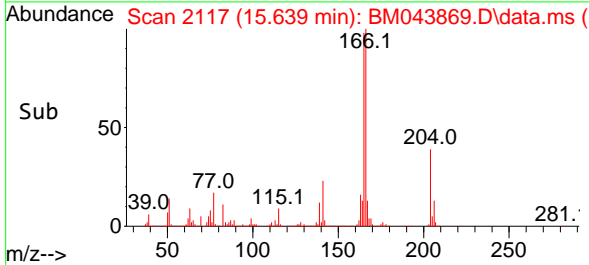
Reviewed By :Jagrut Upadhyay 01/18/2024
 Supervised By :mohammad ahmed 01/19/2024

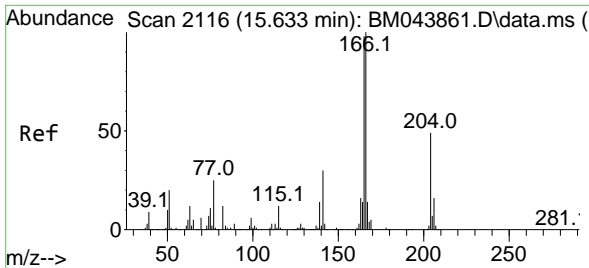


#61
 Fluorene
 Concen: 35.044 ng/ul
 RT: 15.639 min Scan# 2117
 Delta R.T. -0.006 min
 Lab File: BM043869.D
 Acq: 17 Jan 2024 16:24



Tgt Ion:166 Resp: 2096765
 Ion Ratio Lower Upper
 166 100
 165 97.5 78.0 117.0
 167 13.4 10.6 16.0





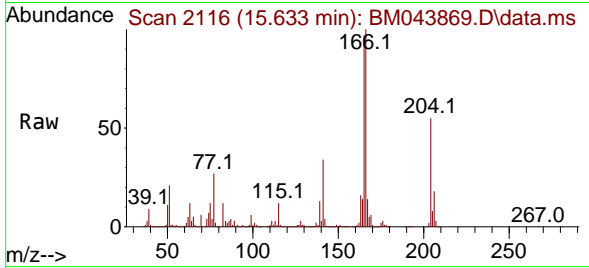
#62
 4-Chlorophenyl-phenylether
 Concen: 33.814 ng/ul
 RT: 15.633 min Scan# 2116
 Delta R.T. -0.006 min
 Lab File: BM043869.D
 Acq: 17 Jan 2024 16:24

Instrument :

BNA_M

ClientSampleId :

SLCS463

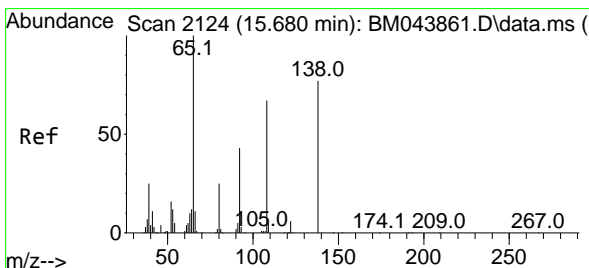
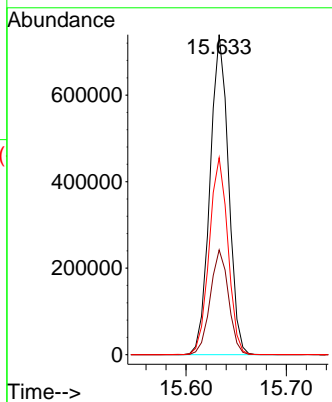
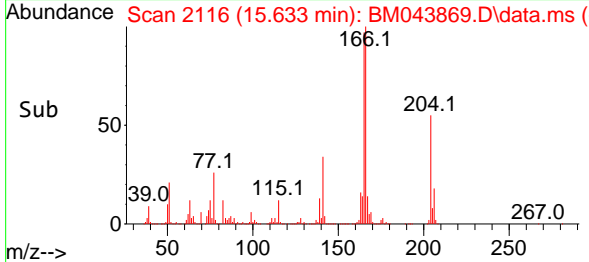


Tgt Ion:204 Resp: 94710
 Ion Ratio Lower Upper
 204 100
 206 32.7 26.4 39.6
 141 61.6 50.3 75.5

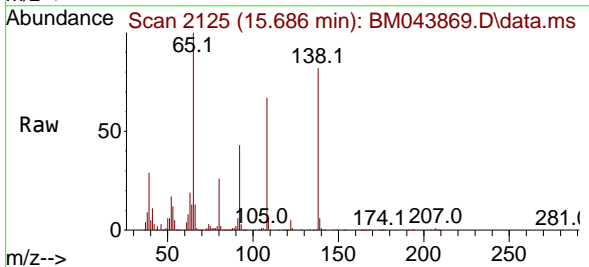
Manual Integrations

APPROVED

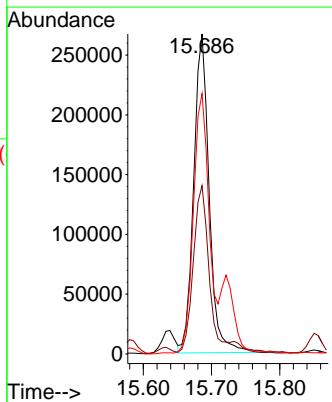
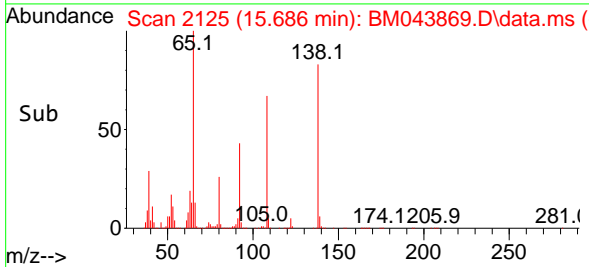
Reviewed By :Jagrut Upadhyay 01/18/2024
 Supervised By :mohammad ahmed 01/19/2024

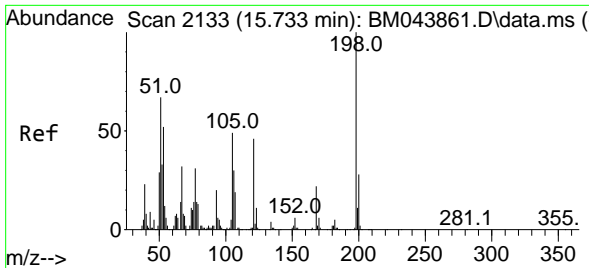


#63
 4-Nitroaniline
 Concen: 42.360 ng/ul
 RT: 15.686 min Scan# 2125
 Delta R.T. -0.000 min
 Lab File: BM043869.D
 Acq: 17 Jan 2024 16:24



Tgt Ion:138 Resp: 422217
 Ion Ratio Lower Upper
 138 100
 92 52.6 43.3 64.9
 108 81.4 63.8 95.8





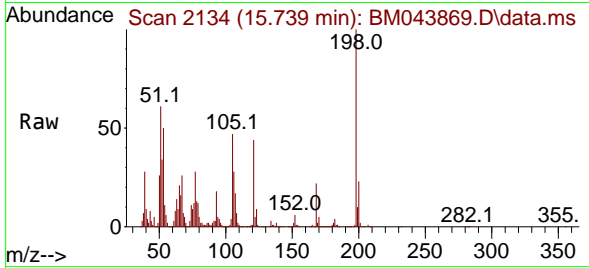
#66
 4,6-Dinitro-2-methylphenol
 Concen: 30.141 ng/ul
 RT: 15.739 min Scan# 2133
 Delta R.T. -0.006 min
 Lab File: BM043869.D
 Acq: 17 Jan 2024 16:24

Instrument :

BNA_M

ClientSampleId :

SLCS463

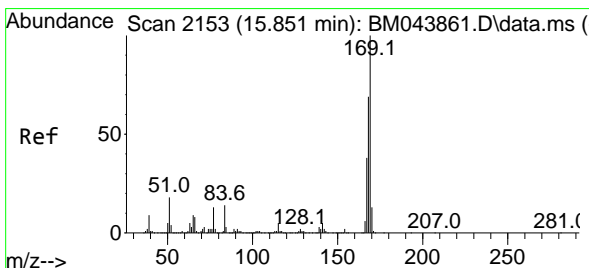
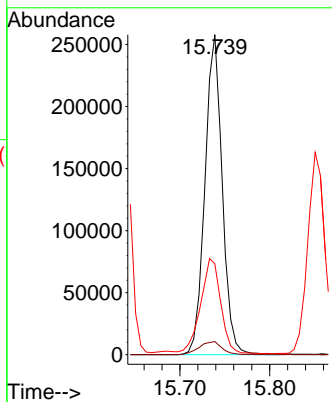
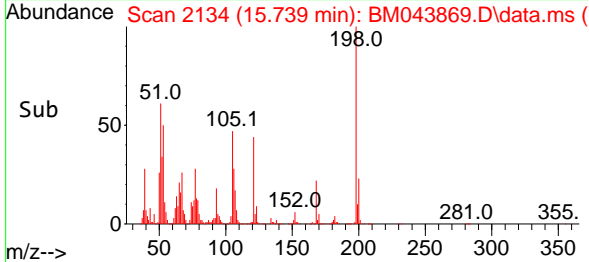


Tgt Ion:198 Resp: 34558
 Ion Ratio Lower Upper
 198 100
 182 4.1 3.4 5.2
 77 28.4 21.4 32.2

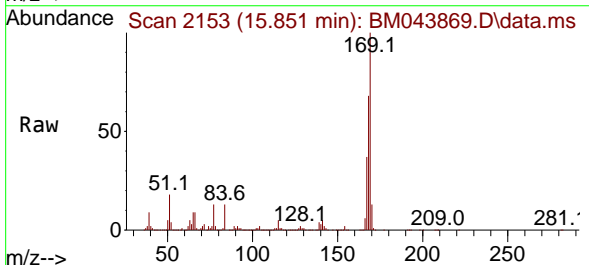
Manual Integrations

APPROVED

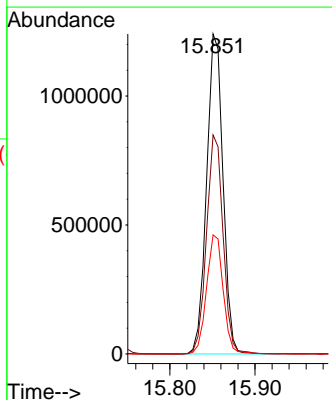
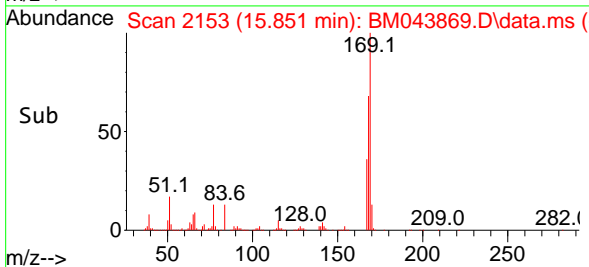
Reviewed By :Jagrut Upadhyay 01/18/2024
 Supervised By :mohammad ahmed 01/19/2024

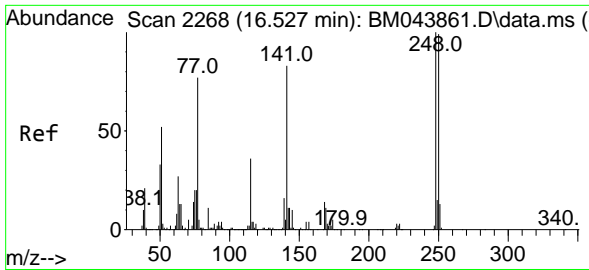


#67
 N-Nitrosodiphenylamine
 Concen: 33.361 ng/ul
 RT: 15.851 min Scan# 2153
 Delta R.T. -0.006 min
 Lab File: BM043869.D
 Acq: 17 Jan 2024 16:24



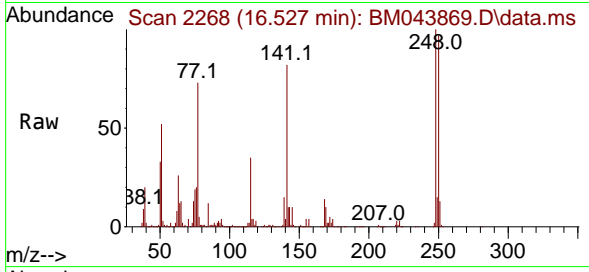
Tgt Ion:169 Resp: 1656320
 Ion Ratio Lower Upper
 169 100
 168 68.4 53.9 80.9
 167 37.2 29.8 44.6





#68
 4-Bromophenyl-phenylether
 Concen: 32.438 ng/ul
 RT: 16.527 min Scan# 21
 Delta R.T. -0.006 min
 Lab File: BM043869.D
 Acq: 17 Jan 2024 16:24

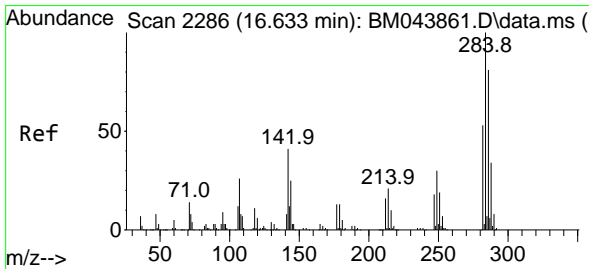
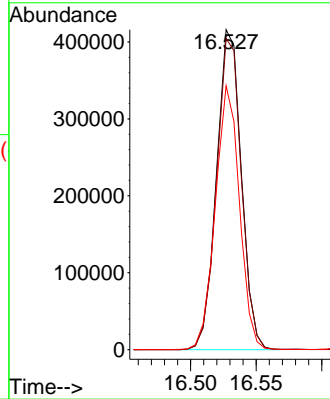
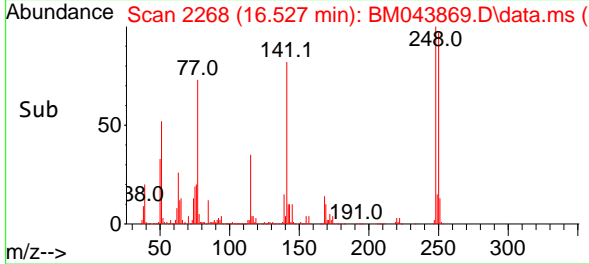
Instrument :
 BNA_M
 ClientSampleId :
 SLCS463



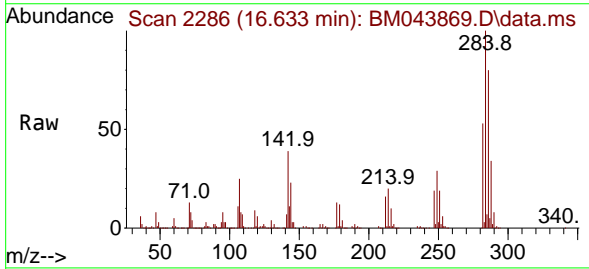
Tgt Ion:248 Resp: 547524
 Ion Ratio Lower Upper
 248 100
 250 97.3 78.2 117.2
 141 82.4 64.8 97.2

Manual Integrations
 APPROVED

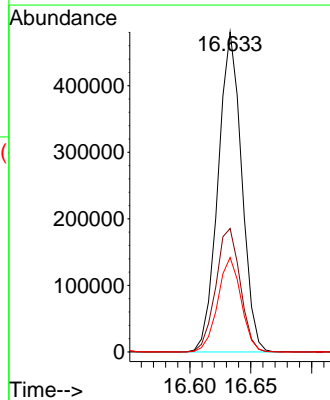
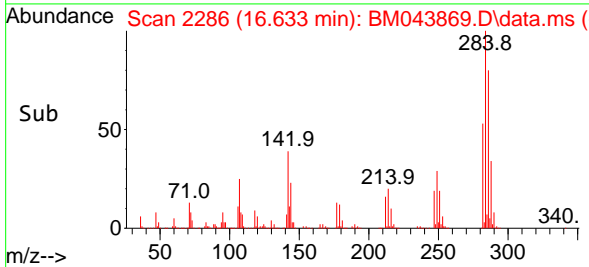
Reviewed By :Jagrut Upadhyay 01/18/2024
 Supervised By :mohammad ahmed 01/19/2024

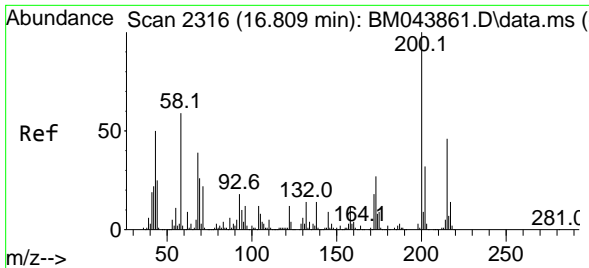


#69
 Hexachlorobenzene
 Concen: 32.571 ng/ul
 RT: 16.633 min Scan# 2286
 Delta R.T. -0.006 min
 Lab File: BM043869.D
 Acq: 17 Jan 2024 16:24



Tgt Ion:284 Resp: 648580
 Ion Ratio Lower Upper
 284 100
 142 38.6 31.0 46.6
 249 29.5 23.8 35.8





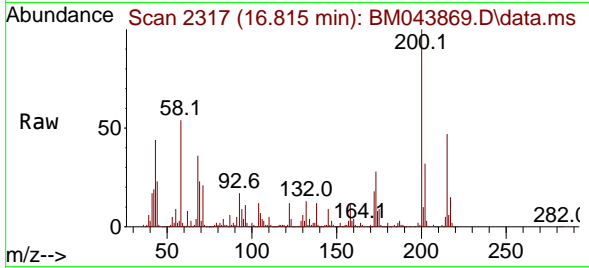
#70
 Atrazine
 Concen: 26.420 ng/uI
 RT: 16.815 min Scan# 2317
 Delta R.T. -0.006 min
 Lab File: BM043869.D
 Acq: 17 Jan 2024 16:24

Instrument :

BNA_M

ClientSampleId :

SLCS463

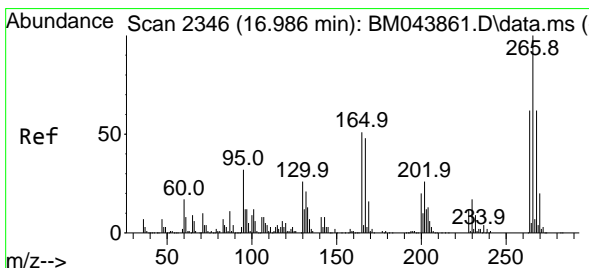
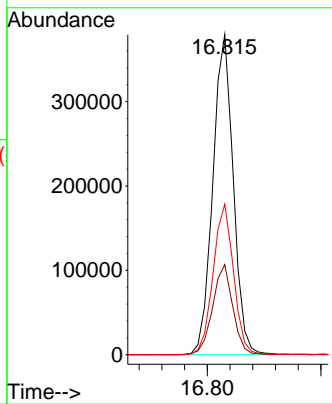
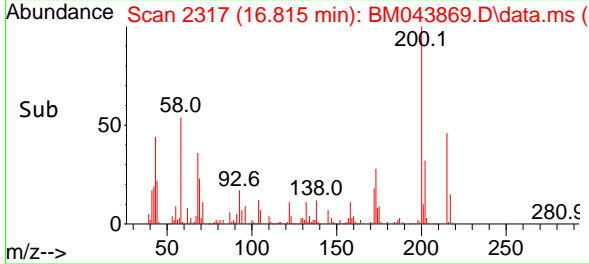


Tgt Ion:200 Resp: 474449
 Ion Ratio Lower Upper
 200 100
 173 28.2 22.0 33.0
 215 47.1 38.7 58.1

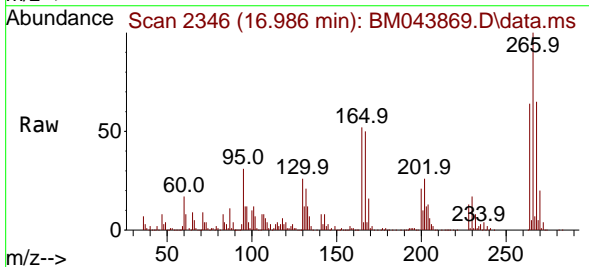
Manual Integrations

APPROVED

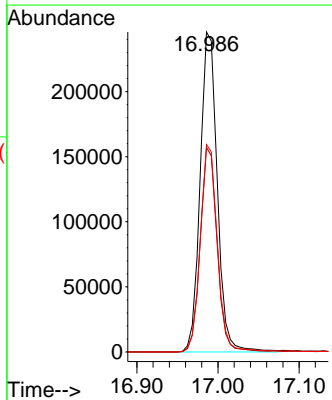
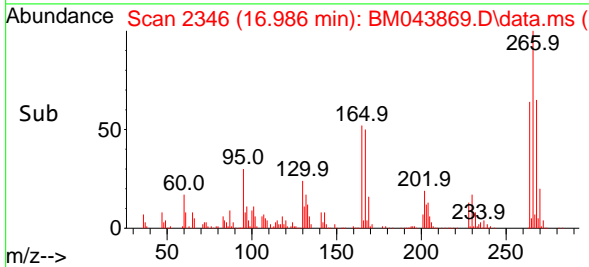
Reviewed By :Jagrut Upadhyay 01/18/2024
 Supervised By :mohammad ahmed 01/19/2024

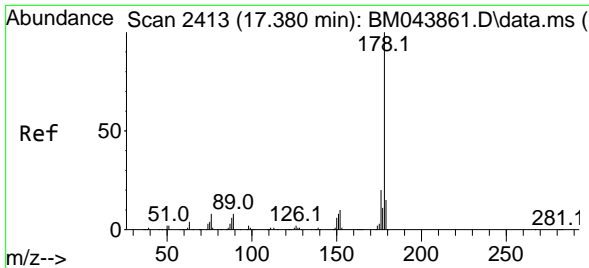


#71
 Pentachlorophenol
 Concen: 28.813 ng/uI
 RT: 16.986 min Scan# 2346
 Delta R.T. -0.012 min
 Lab File: BM043869.D
 Acq: 17 Jan 2024 16:24



Tgt Ion:266 Resp: 360710
 Ion Ratio Lower Upper
 266 100
 264 63.9 50.0 75.0
 268 64.8 51.6 77.4





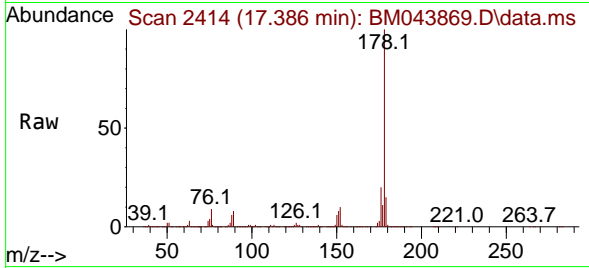
#72
 Phenanthrene
 Concen: 34.047 ng/u1
 RT: 17.386 min Scan# 2413
 Delta R.T. -0.000 min
 Lab File: BM043869.D
 Acq: 17 Jan 2024 16:24

Instrument :

BNA_M

ClientSampleId :

SLCS463

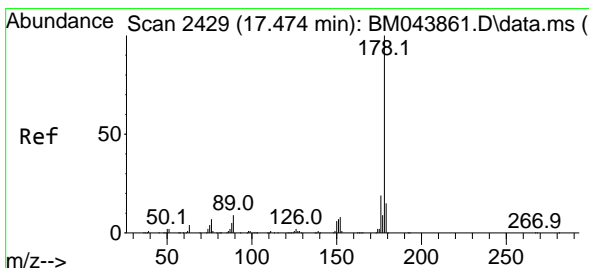
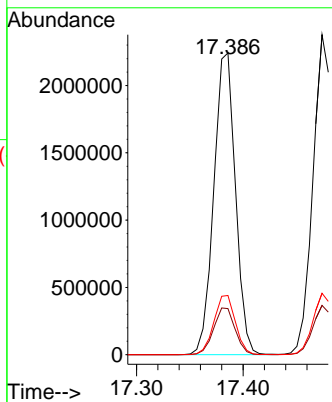
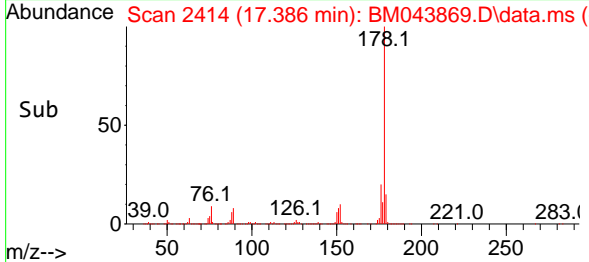


Tgt Ion:178 Resp: 315436
 Ion Ratio Lower Upper
 178 100
 179 15.3 12.6 18.8
 176 19.6 15.6 23.4

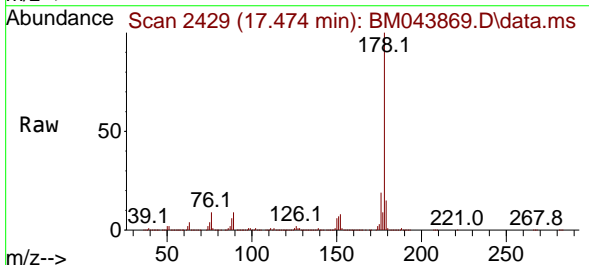
Manual Integrations

APPROVED

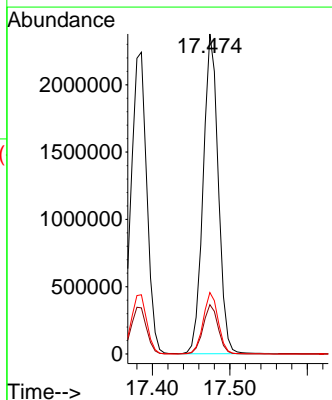
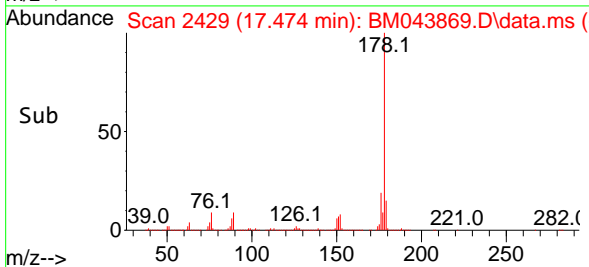
Reviewed By :Jagrut Upadhyay 01/18/2024
 Supervised By :mohammad ahmed 01/19/2024

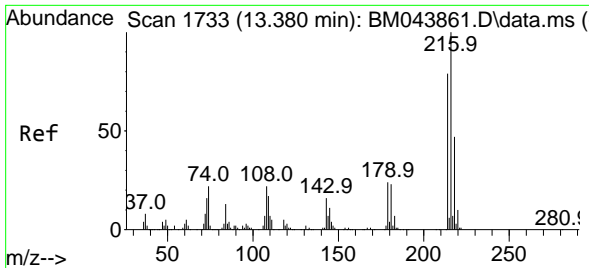


#74
 Anthracene
 Concen: 34.091 ng/u1
 RT: 17.474 min Scan# 2429
 Delta R.T. -0.006 min
 Lab File: BM043869.D
 Acq: 17 Jan 2024 16:24



Tgt Ion:178 Resp: 3214249
 Ion Ratio Lower Upper
 178 100
 179 15.4 12.3 18.5
 176 19.2 15.2 22.8





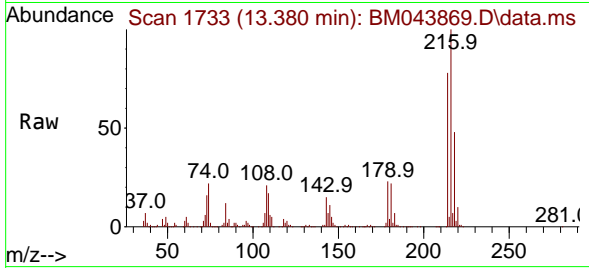
#75
 1,2,3,4-Tetrachlorobenzene
 Concen: 32.808 ng/uL
 RT: 13.380 min Scan# 11
 Delta R.T. -0.012 min
 Lab File: BM043869.D
 Acq: 17 Jan 2024 16:24

Instrument :

BNA_M

ClientSampleId :

SLCS463

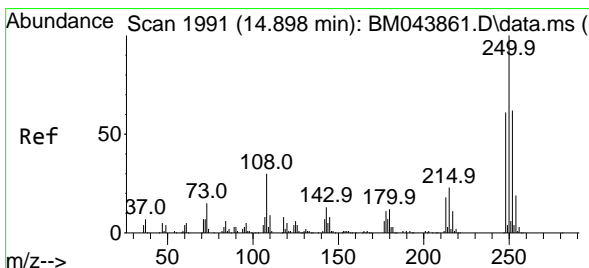
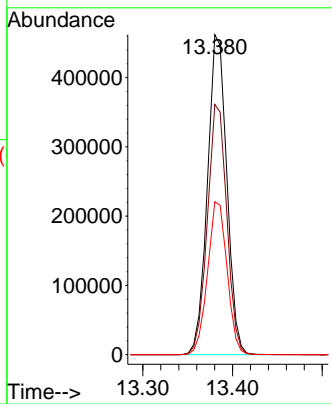
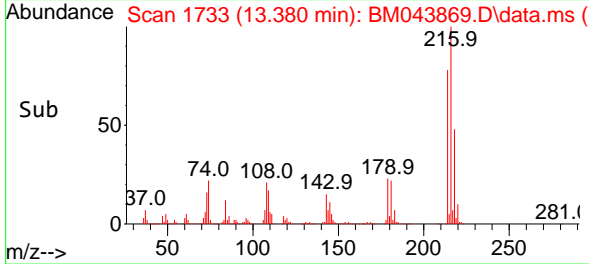


Tgt Ion:216 Resp: 69387
 Ion Ratio Lower Upper
 216 100
 214 78.2 62.5 93.7
 218 47.8 38.1 57.1

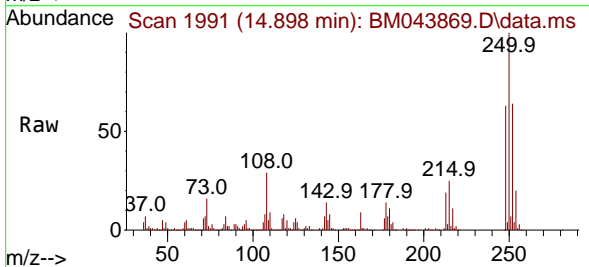
Manual Integrations

APPROVED

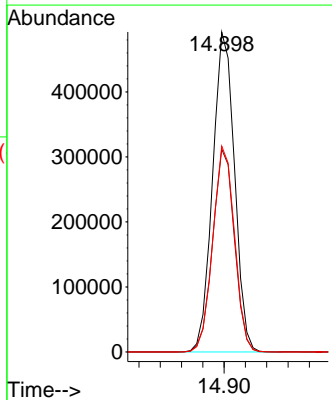
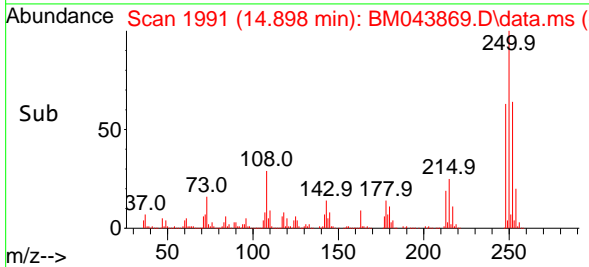
Reviewed By :Jagrut Upadhyay 01/18/2024
 Supervised By :mohammad ahmed 01/19/2024

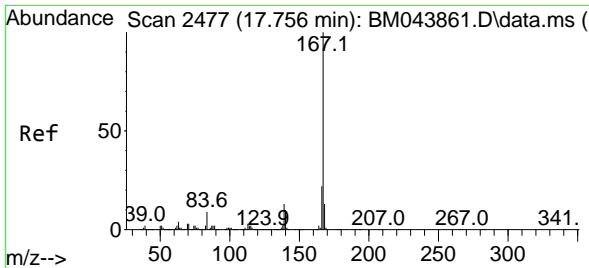


#76
 Pentachlorobenzene
 Concen: 32.452 ng/uL
 RT: 14.898 min Scan# 1991
 Delta R.T. -0.006 min
 Lab File: BM043869.D
 Acq: 17 Jan 2024 16:24



Tgt Ion:250 Resp: 700313
 Ion Ratio Lower Upper
 250 100
 248 63.4 49.4 74.0
 252 64.4 50.6 75.8





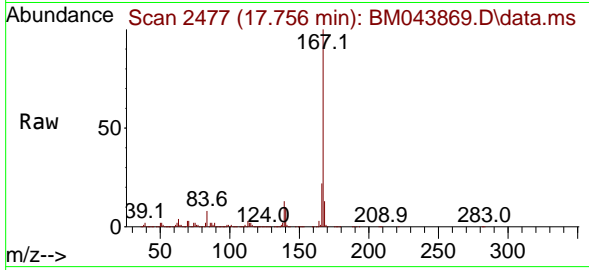
#77
 Carbazole
 Concen: 33.468 ng/uI
 RT: 17.756 min Scan# 2477
 Delta R.T. -0.006 min
 Lab File: BM043869.D
 Acq: 17 Jan 2024 16:24

Instrument :

BNA_M

ClientSampleId :

SLCS463



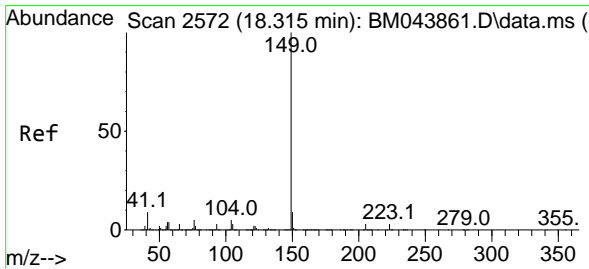
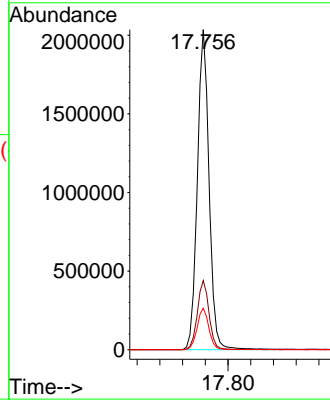
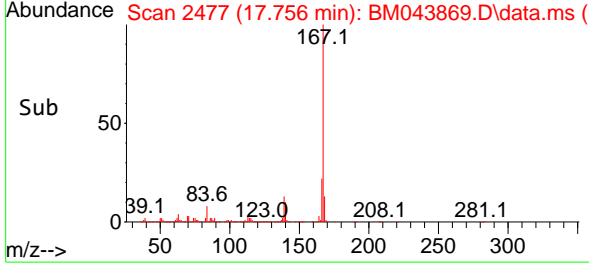
Tgt Ion:167 Resp: 2925150
 Ion Ratio Lower Upper
 167 100
 166 21.6 17.4 26.2
 139 12.9 10.4 15.6

Manual Integrations

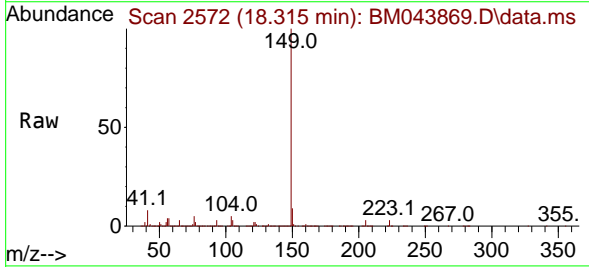
APPROVED

Reviewed By :Jagrut Upadhyay 01/18/2024

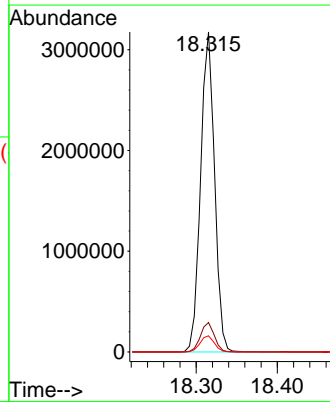
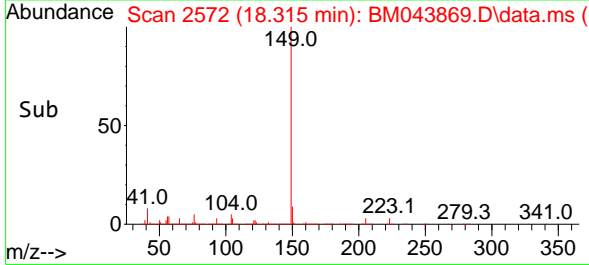
Supervised By :mohammad ahmed 01/19/2024

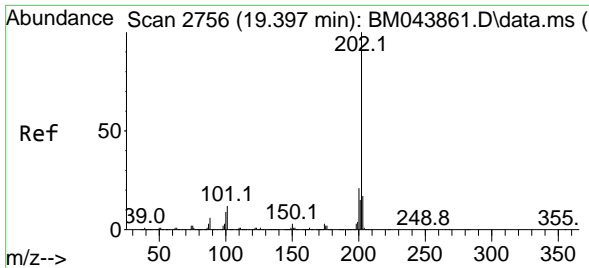


#78
 Di-n-butylphthalate
 Concen: 31.913 ng/uI
 RT: 18.315 min Scan# 2572
 Delta R.T. -0.006 min
 Lab File: BM043869.D
 Acq: 17 Jan 2024 16:24



Tgt Ion:149 Resp: 3787641
 Ion Ratio Lower Upper
 149 100
 150 9.2 7.3 10.9
 104 5.1 3.8 5.8





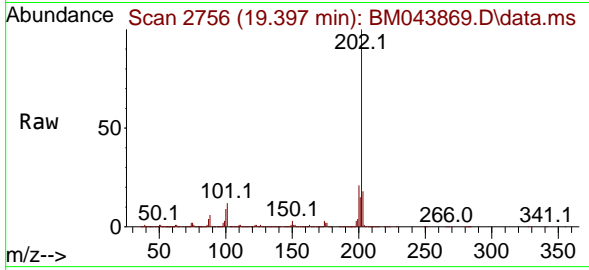
#80
 Fluoranthene
 Concen: 33.196 ng/u1
 RT: 19.397 min Scan# 2756
 Delta R.T. -0.006 min
 Lab File: BM043869.D
 Acq: 17 Jan 2024 16:24

Instrument :

BNA_M

Client Sample Id :

SLCS463

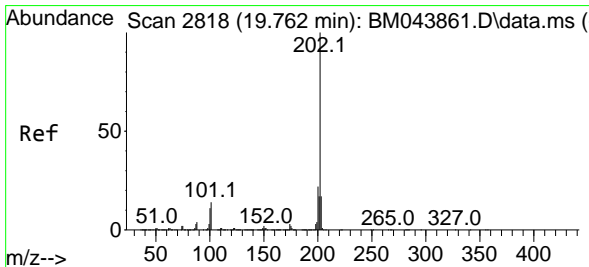
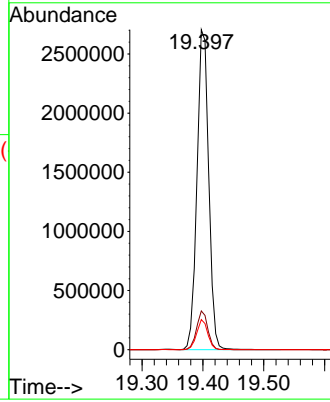
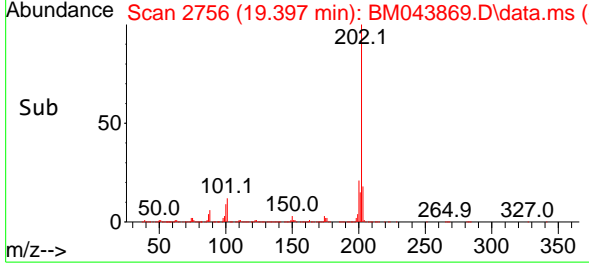


Tgt Ion:202 Resp: 3605880
 Ion Ratio Lower Upper
 202 100
 101 12.1 9.4 14.2
 100 9.4 7.0 10.6

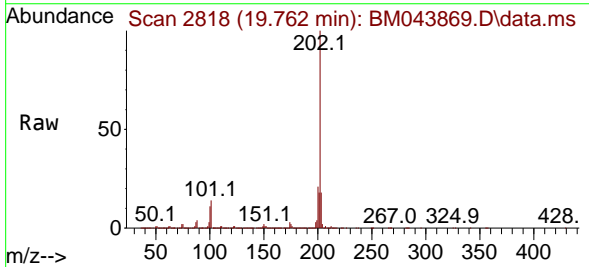
Manual Integrations

APPROVED

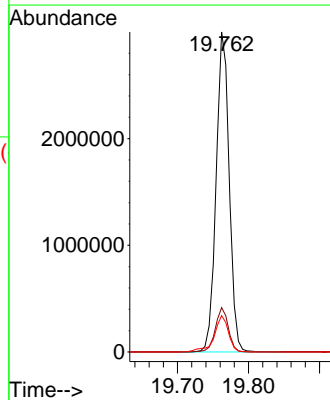
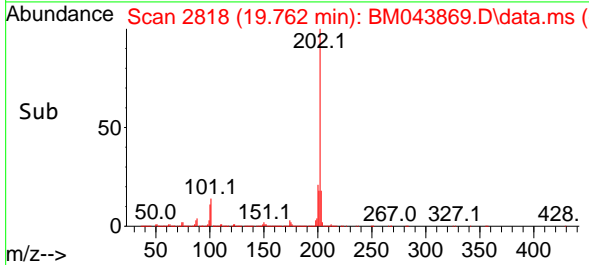
Reviewed By :Jagrut Upadhyay 01/18/2024
 Supervised By :mohammad ahmed 01/19/2024

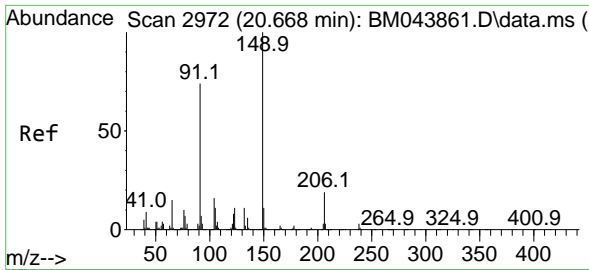


#82
 Pyrene
 Concen: 33.902 ng/u1
 RT: 19.762 min Scan# 2818
 Delta R.T. -0.006 min
 Lab File: BM043869.D
 Acq: 17 Jan 2024 16:24



Tgt Ion:202 Resp: 3816201
 Ion Ratio Lower Upper
 202 100
 101 13.8 10.7 16.1
 100 11.4 8.6 12.8





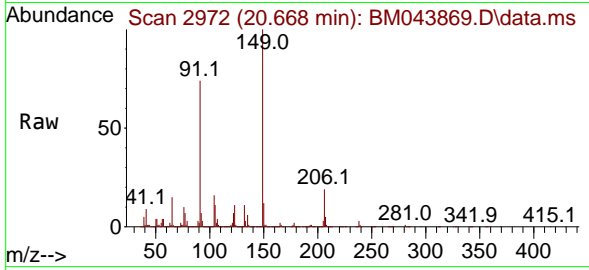
#83
 Butylbenzylphthalate
 Concen: 32.578 ng/ul
 RT: 20.668 min Scan# 2972
 Delta R.T. -0.006 min
 Lab File: BM043869.D
 Acq: 17 Jan 2024 16:24

Instrument :

BNA_M

ClientSampleId :

SLCS463

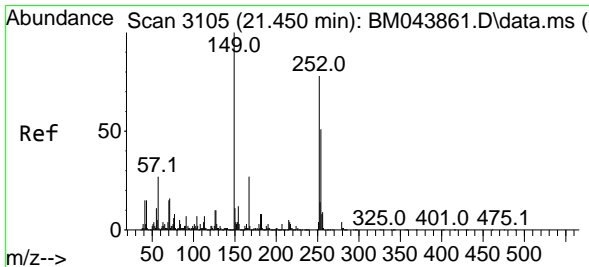
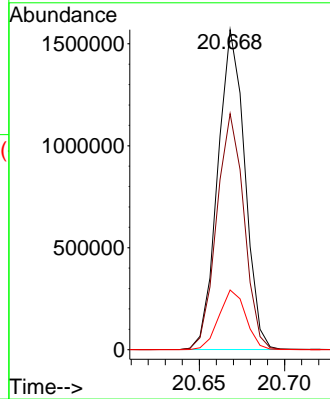
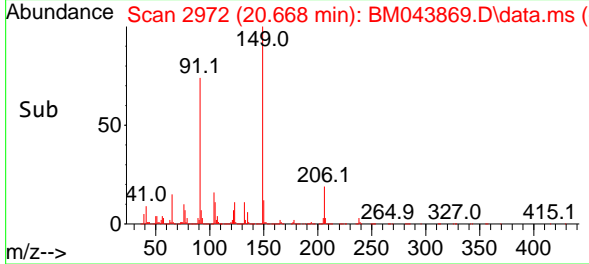


Tgt Ion:149 Resp: 1734079
 Ion Ratio Lower Upper
 149 100
 91 73.8 56.5 84.7
 206 18.7 15.5 23.3

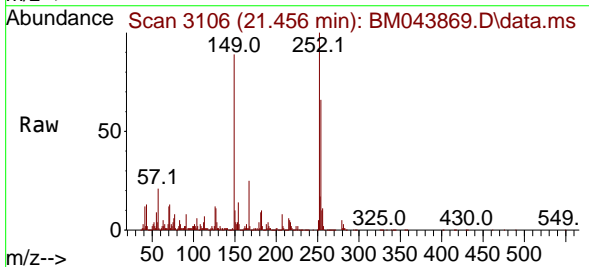
Manual Integrations

APPROVED

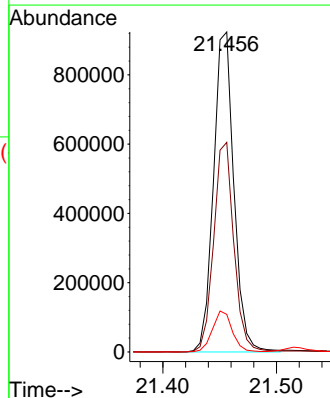
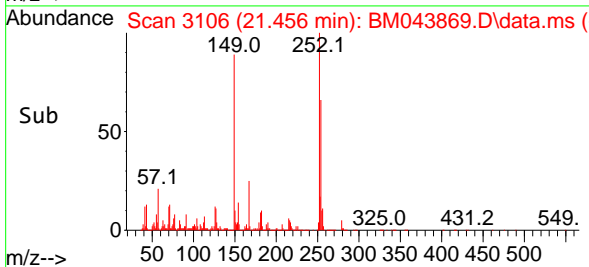
Reviewed By :Jagrut Upadhyay 01/18/2024
 Supervised By :mohammad ahmed 01/19/2024

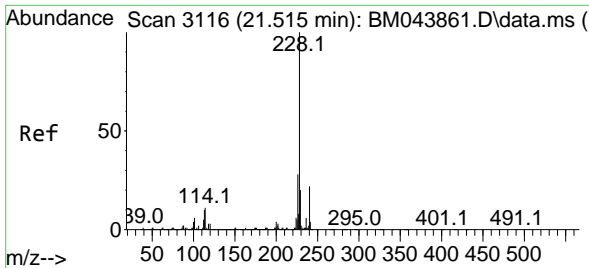


#84
 3,3'-Dichlorobenzidine
 Concen: 33.304 ng/ul
 RT: 21.456 min Scan# 3106
 Delta R.T. -0.000 min
 Lab File: BM043869.D
 Acq: 17 Jan 2024 16:24



Tgt Ion:252 Resp: 1152385
 Ion Ratio Lower Upper
 252 100
 254 65.5 52.1 78.1
 126 11.7 9.8 14.8





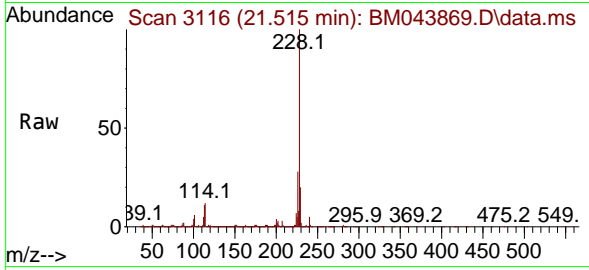
#85
 Benzo(a)anthracene
 Concen: 34.188 ng/ul
 RT: 21.515 min Scan# 3116
 Delta R.T. -0.006 min
 Lab File: BM043869.D
 Acq: 17 Jan 2024 16:24

Instrument :

BNA_M

ClientSampleId :

SLCS463

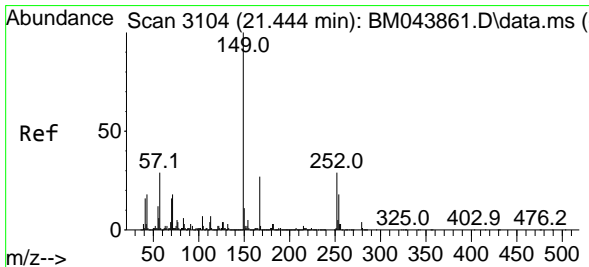
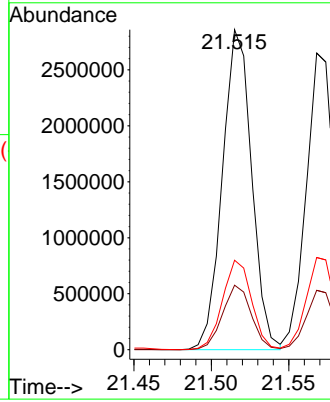
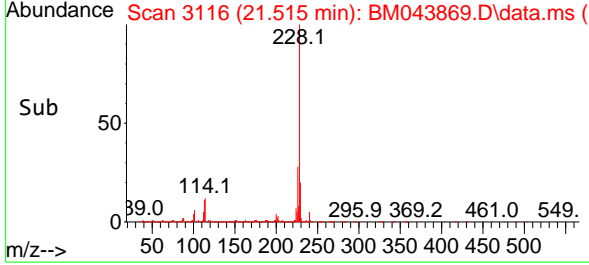


Tgt Ion:228 Resp: 375199
 Ion Ratio Lower Upper
 228 100
 229 20.2 15.5 23.3
 226 28.0 22.3 33.5

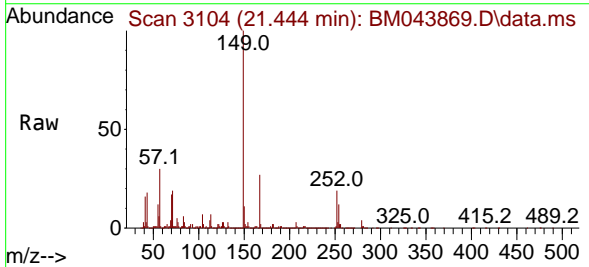
Manual Integrations

APPROVED

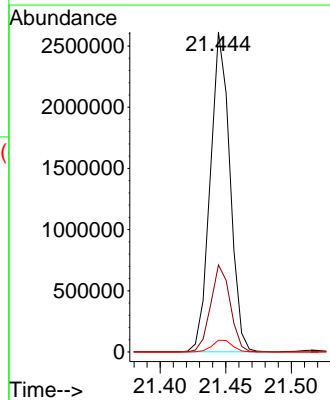
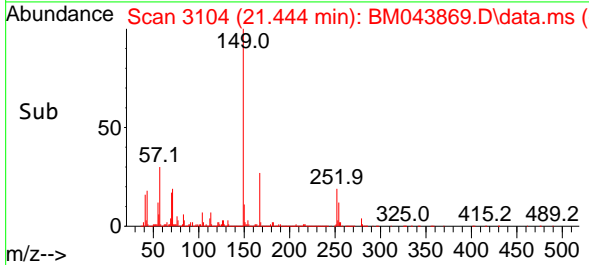
Reviewed By :Jagrut Upadhyay 01/18/2024
 Supervised By :mohammad ahmed 01/19/2024

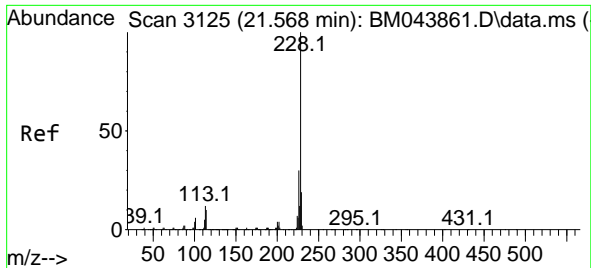


#86
 Bis(2-ethylhexyl)phthalate
 Concen: 32.175 ng/ul
 RT: 21.444 min Scan# 3104
 Delta R.T. -0.000 min
 Lab File: BM043869.D
 Acq: 17 Jan 2024 16:24



Tgt Ion:149 Resp: 2727552
 Ion Ratio Lower Upper
 149 100
 167 27.2 21.5 32.3
 279 3.6 2.8 4.2





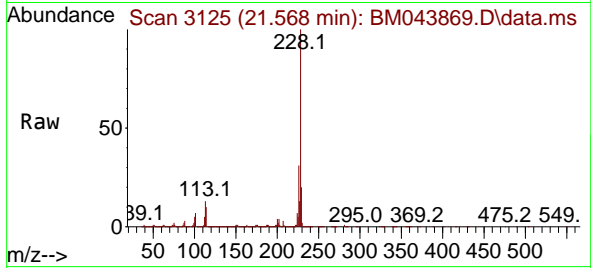
#87
 Chrysene
 Concen: 34.135 ng/u1
 RT: 21.568 min Scan# 3125
 Delta R.T. -0.006 min
 Lab File: BM043869.D
 Acq: 17 Jan 2024 16:24

Instrument :

BNA_M

ClientSampleId :

SLCS463

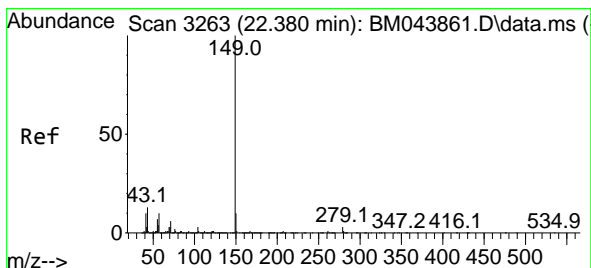
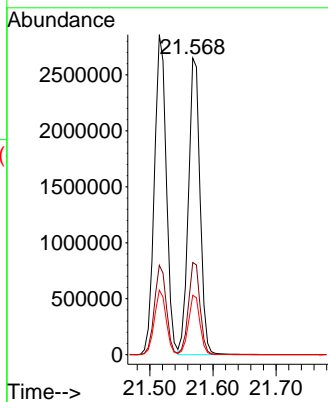
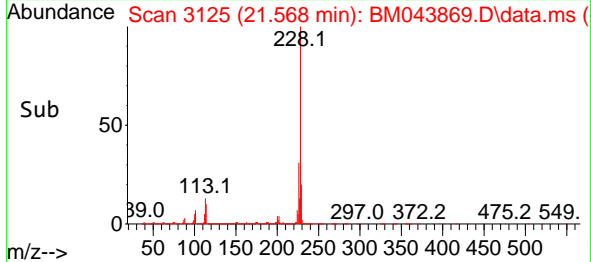


Tgt Ion:228 Resp: 3381640
 Ion Ratio Lower Upper
 228 100
 226 31.1 24.6 36.8
 229 20.0 15.8 23.8

Manual Integrations

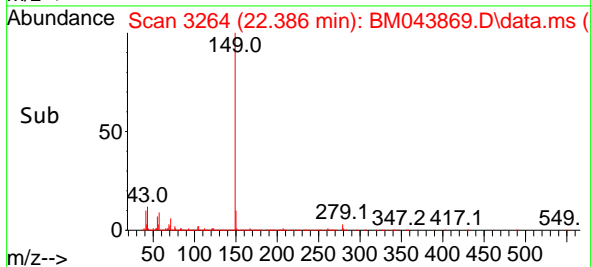
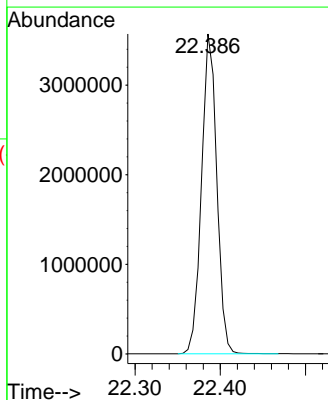
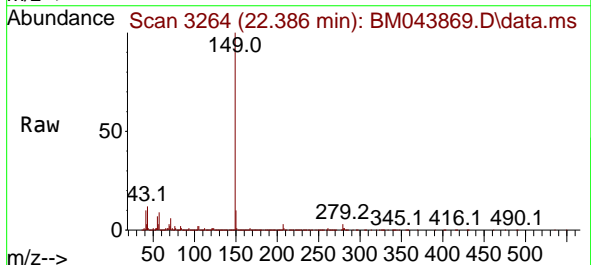
APPROVED

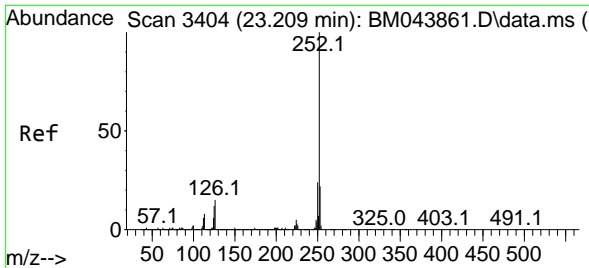
Reviewed By :Jagrut Upadhyay 01/18/2024
 Supervised By :mohammad ahmed 01/19/2024



#89
 Di-n-octyl phthalate
 Concen: 32.699 ng/u1
 RT: 22.386 min Scan# 3264
 Delta R.T. -0.000 min
 Lab File: BM043869.D
 Acq: 17 Jan 2024 16:24

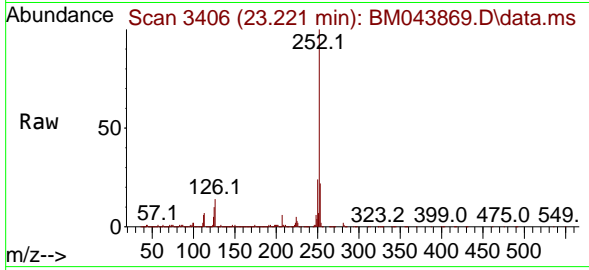
Tgt Ion:149 Resp: 4441078





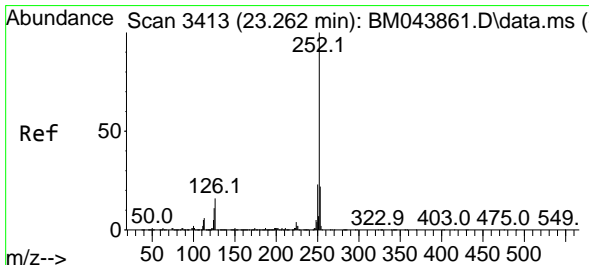
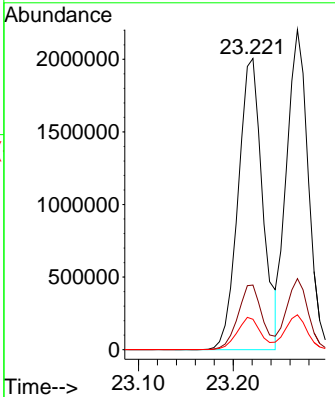
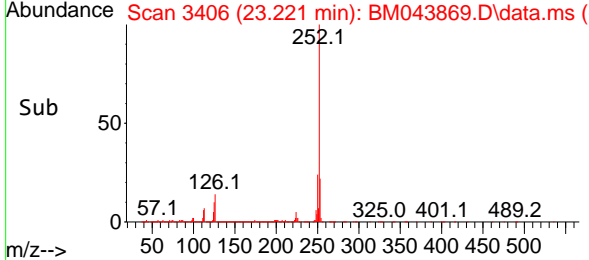
#90
 Benzo(b)fluoranthene
 Concen: 35.244 ng/ul
 RT: 23.221 min Scan# 3406
 Delta R.T. -0.000 min
 Lab File: BM043869.D
 Acq: 17 Jan 2024 16:24

Instrument : BNA_M
 ClientSampleId : SLCS463

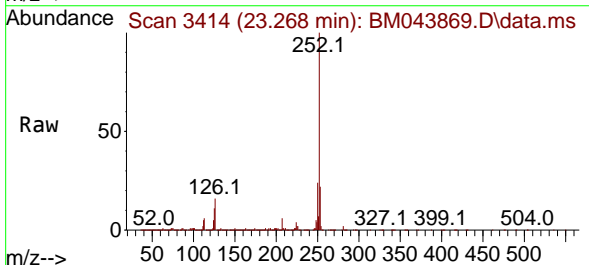


Tgt Ion:252 Resp: 360396
 Ion Ratio Lower Upper
 252 100
 253 22.2 17.4 26.2
 125 10.4 8.6 12.8

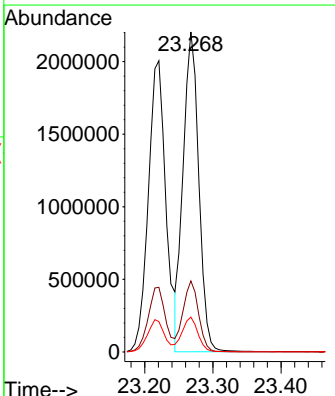
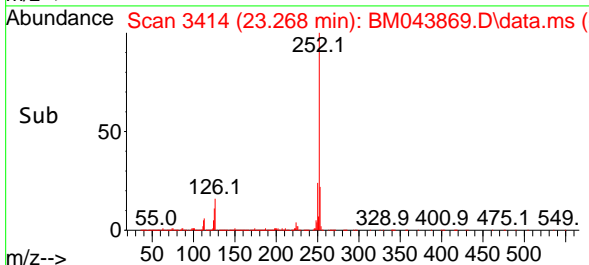
Manual Integrations
APPROVED
 Reviewed By :Jagrut Upadhyay 01/18/2024
 Supervised By :mohammad ahmed 01/19/2024

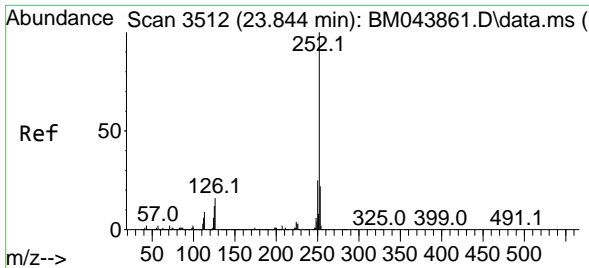


#91
 Benzo(k)fluoranthene
 Concen: 34.687 ng/ul
 RT: 23.268 min Scan# 3414
 Delta R.T. -0.000 min
 Lab File: BM043869.D
 Acq: 17 Jan 2024 16:24



Tgt Ion:252 Resp: 3493779
 Ion Ratio Lower Upper
 252 100
 253 22.2 17.5 26.3
 125 10.9 8.6 13.0





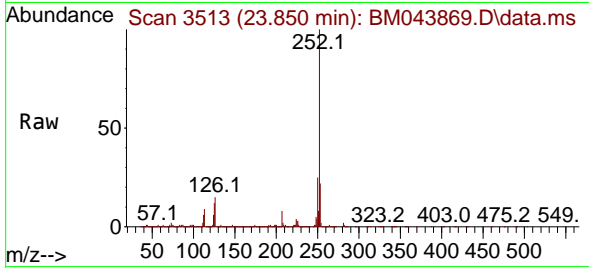
#93
 Benzo(a)pyrene
 Concen: 35.465 ng/u1
 RT: 23.850 min Scan# 311
 Delta R.T. -0.000 min
 Lab File: BM043869.D
 Acq: 17 Jan 2024 16:24

Instrument :

BNA_M

ClientSampleId :

SLCS463

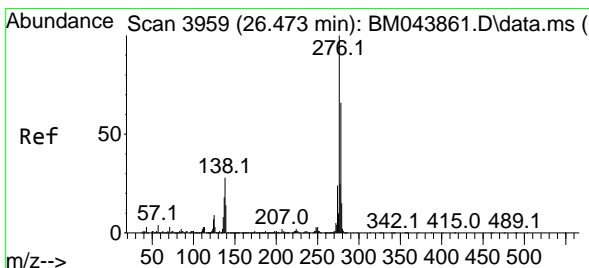
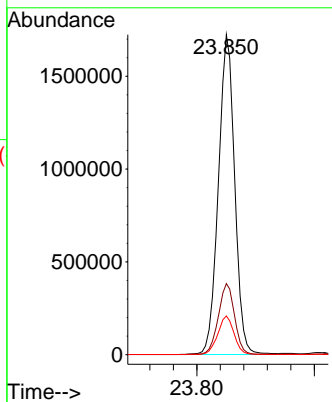
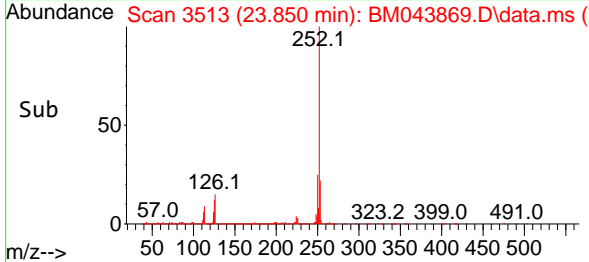


Tgt Ion:252 Resp: 331961
 Ion Ratio Lower Upper
 252 100
 253 22.2 17.5 26.3
 125 12.1 9.7 14.5

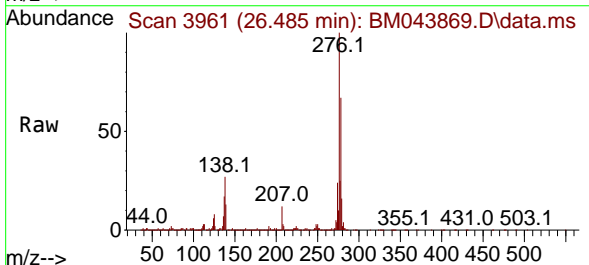
Manual Integrations

APPROVED

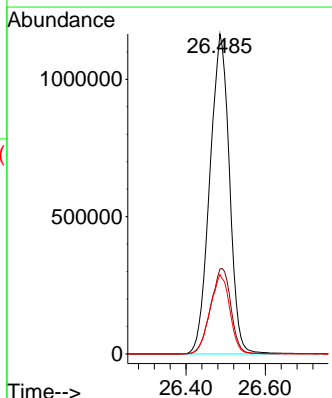
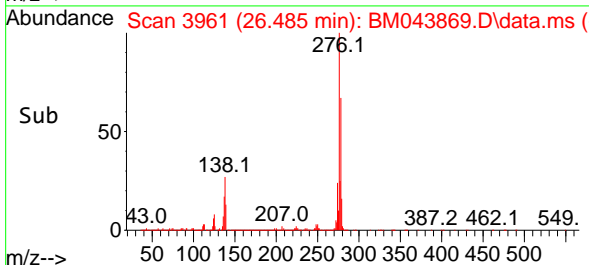
Reviewed By :Jagrut Upadhyay 01/18/2024
 Supervised By :mohammad ahmed 01/19/2024

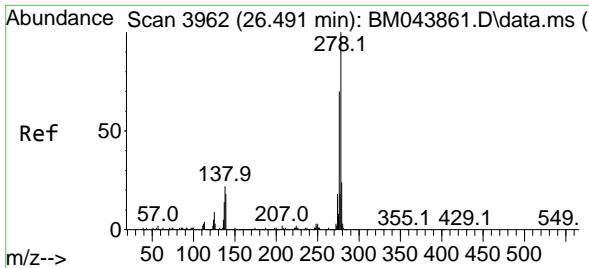


#94
 Indeno(1,2,3-cd)pyrene
 Concen: 37.462 ng/u1
 RT: 26.485 min Scan# 3961
 Delta R.T. -0.000 min
 Lab File: BM043869.D
 Acq: 17 Jan 2024 16:24



Tgt Ion:276 Resp: 4001801
 Ion Ratio Lower Upper
 276 100
 138 26.6 21.4 32.0
 277 24.8 20.2 30.2





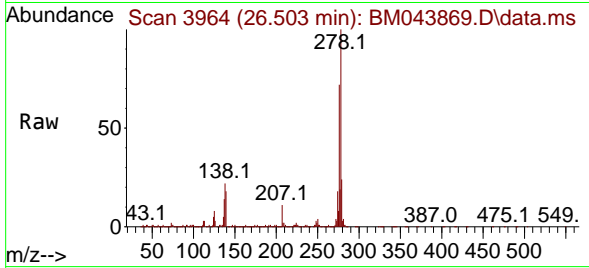
#95
 Dibenzo(a,h)anthracene
 Concen: 37.847 ng/ul
 RT: 26.503 min Scan# 3964
 Delta R.T. -0.000 min
 Lab File: BM043869.D
 Acq: 17 Jan 2024 16:24

Instrument :

BNA_M

ClientSampleId :

SLCS463

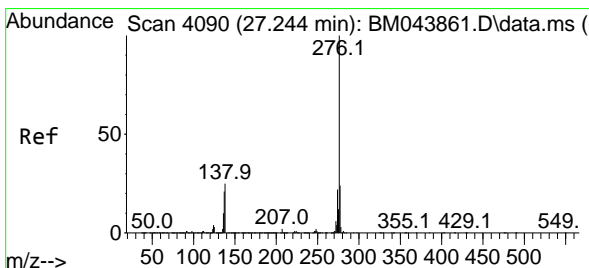
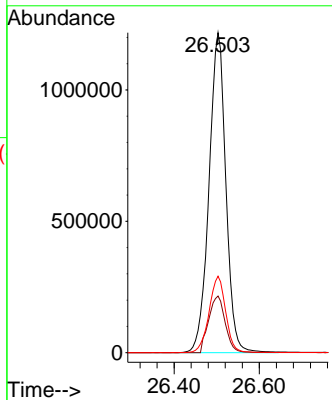
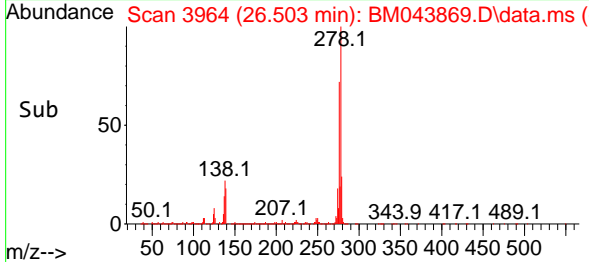


Tgt Ion:278 Resp: 334989
 Ion Ratio Lower Upper
 278 100
 139 17.7 14.4 21.6
 279 23.9 19.0 28.6

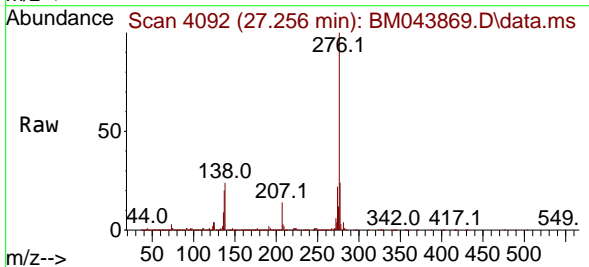
Manual Integrations

APPROVED

Reviewed By :Jagrut Upadhyay 01/18/2024
 Supervised By :mohammad ahmed 01/19/2024



#96
 Benzo(g,h,i)perylene
 Concen: 36.832 ng/ul
 RT: 27.256 min Scan# 4092
 Delta R.T. -0.000 min
 Lab File: BM043869.D
 Acq: 17 Jan 2024 16:24



Tgt Ion:276 Resp: 2987800
 Ion Ratio Lower Upper
 276 100
 138 23.8 19.1 28.7
 277 24.0 19.1 28.7

