

Data Path : Z:\SVOASRV\HPCHEM1\BNA_M\DATA\BM012519\
 Data File : BM018660.D
 Acq On : 25 Jan 2019 19:46
 Operator : JU/SJ
 Sample : K1234-10
 Misc :
 ALS Vial : 12 Sample Multiplier: 1

Instrument :
 BNA_M
 ClientSampleId :
 WWB-6

Quant Time: Jan 28 02:07:54 2019
 Quant Method : Z:\SVOASRV\HPCHEM1\BNA_M\METHODS\8270-BM010919.M
 Quant Title : ASP BNA STANDARDS FOR 5 POINT CALIBRATION
 QLast Update : Fri Jan 18 22:01:30 2019
 Response via : Initial Calibration

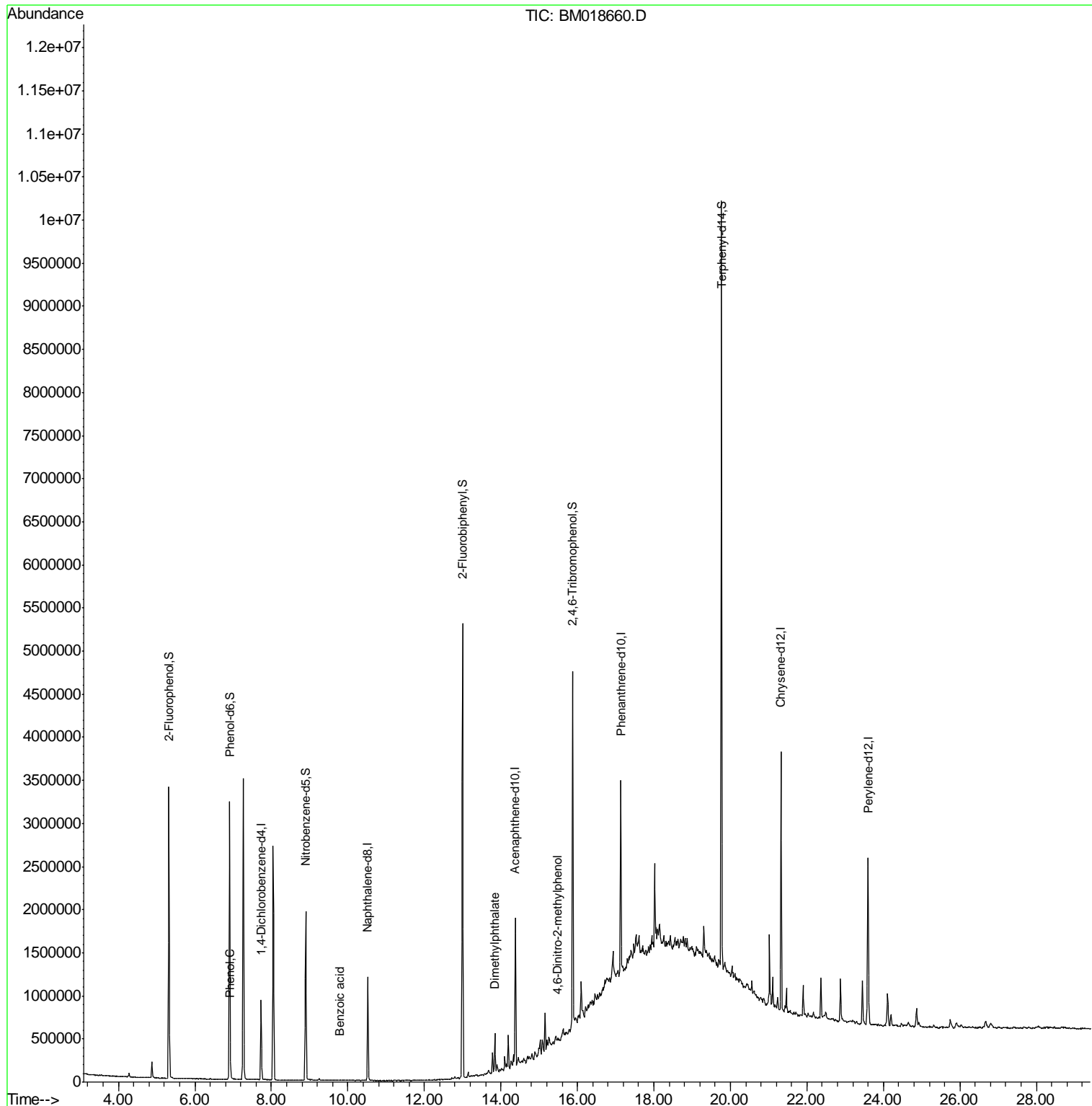
Internal Standards	R.T.	QIon	Response	Conc	Units	Dev(Min)
1) 1,4-Dichlorobenzene-d4	7.73	152	256315	20.00	ng	0.00
21) Naphthalene-d8	10.52	136	1012596	20.00	ng	0.00
39) Acenaphthene-d10	14.38	164	563703	20.00	ng	0.00
64) Phenanthrene-d10	17.13	188	1242653	20.00	ng	0.00
76) Chrysene-d12	21.33	240	1345823	20.00	ng	0.00
87) Perylene-d12	23.60	264	1407088	20.00	ng	0.00
System Monitoring Compounds						
5) 2-Fluorophenol	5.32	112	1382801	99.62	ng	0.00
7) Phenol-d6	6.90	99	1794590	101.79	ng	0.00
23) Nitrobenzene-d5	8.90	82	1097211	62.82	ng	0.00
42) 2,4,6-Tribromophenol	15.88	330	717957	100.03	ng	0.00
45) 2-Fluorobiphenyl	13.00	172	2752565	63.72	ng	0.00
79) Terphenyl-d14	19.77	244	4149056	64.99	ng	0.00
Target Compounds						
10) Phenol	6.93	94	50631	2.826	ng	91
32) Benzoic acid	9.79	122	123	6.515	ng	# 16
50) Dimethylphthalate	13.84	163	257929	5.571	ng	98
65) 4,6-Dinitro-2-methylphenol	15.46	198	237	5.420	ng	# 1

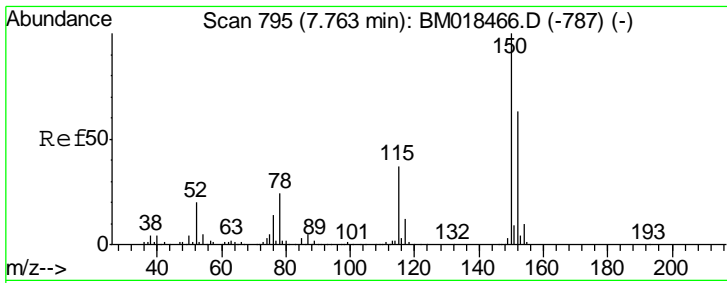
(#) = qualifier out of range (m) = manual integration (+) = signals summed

Data Path : Z:\SVOASRV\HPCHEM1\BNA_M\DATA\BM012519\
 Data File : BM018660.D
 Acq On : 25 Jan 2019 19:46
 Operator : JU/SJ
 Sample : K1234-10
 Misc :
 ALS Vial : 12 Sample Multiplier: 1

Instrument :
 BNA_M
 ClientSampled :
 WWB-6

Quant Time: Jan 28 02:07:54 2019
 Quant Method : Z:\SVOASRV\HPCHEM1\BNA_M\METHODS\8270-BM010919.M
 Quant Title : ASP BNA STANDARDS FOR 5 POINT CALIBRATION
 QLast Update : Fri Jan 18 22:01:30 2019
 Response via : Initial Calibration

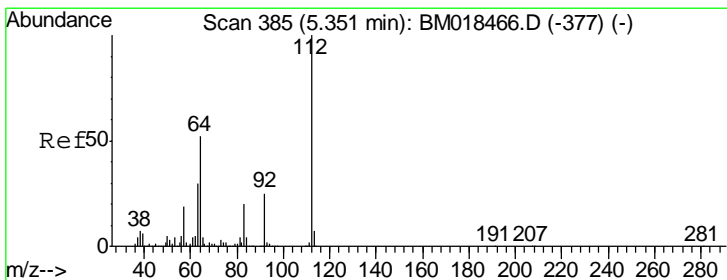
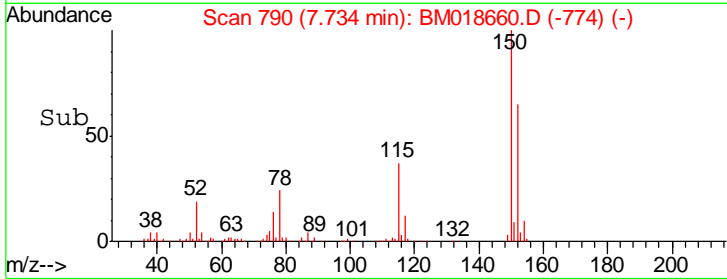
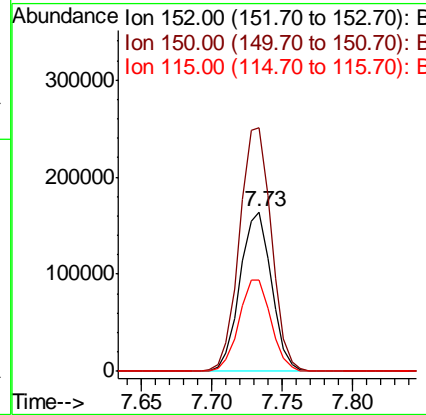
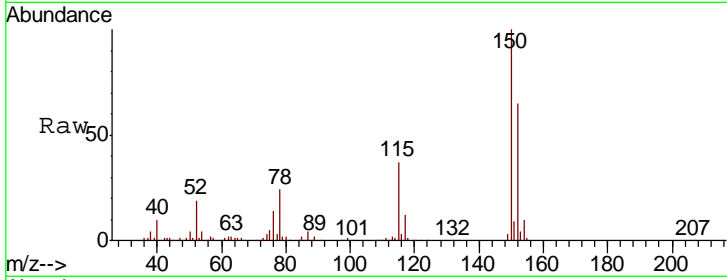




#1
 1,4-Dichlorobenzene-d4
 Concen: 20.000 ng
 RT: 7.73 min Scan# 790
 Delta R.T. -0.01 min
 Lab File: BM018660.D
 Acq: 25 Jan 2019 19:46

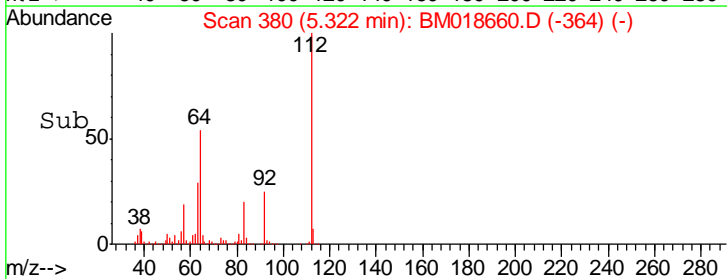
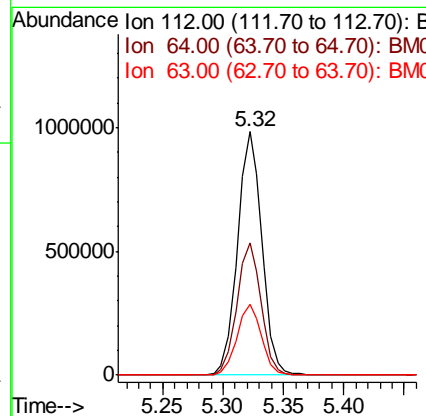
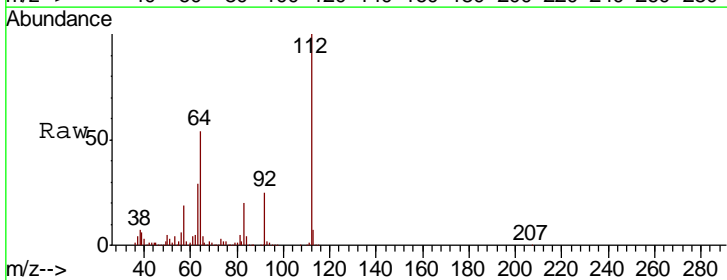
Instrument :
 BNA_M
 ClientSampleID :
 WWB-6

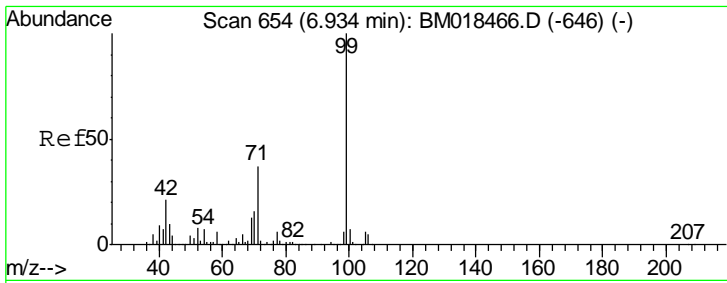
Tgt Ion	Resp	Lower	Upper
152	100		
150	153.0	126.9	190.3
115	57.1	45.5	68.3



#5
 2-Fluorophenol
 Concen: 99.617 ng
 RT: 5.32 min Scan# 380
 Delta R.T. -0.01 min
 Lab File: BM018660.D
 Acq: 25 Jan 2019 19:46

Tgt Ion	Resp	Lower	Upper
112	100		
64	54.4	46.5	69.7
63	29.2	25.2	37.8

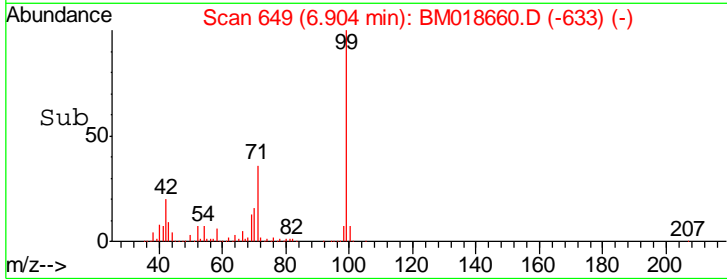
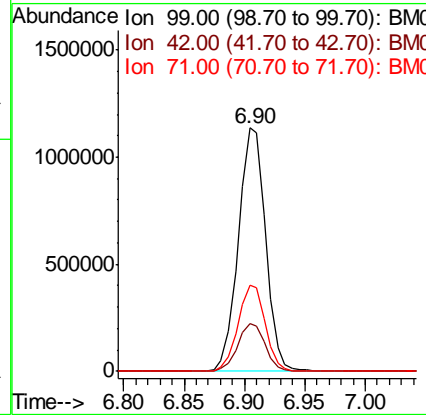
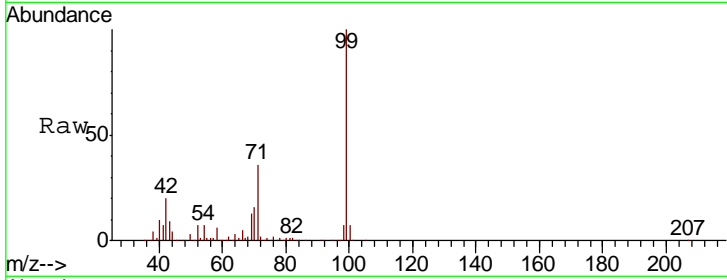




#7
 Phenol-d6
 Concen: 101.787 ng
 RT: 6.90 min Scan# 649
 Delta R.T. -0.01 min
 Lab File: BM018660.D
 Acq: 25 Jan 2019 19:46

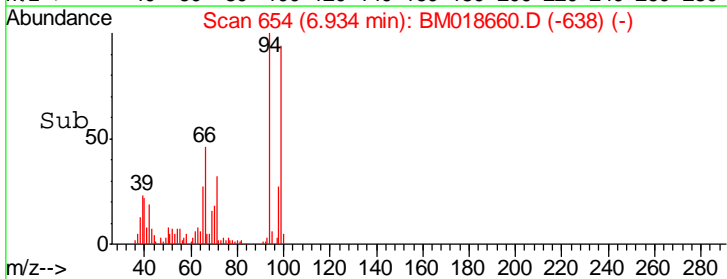
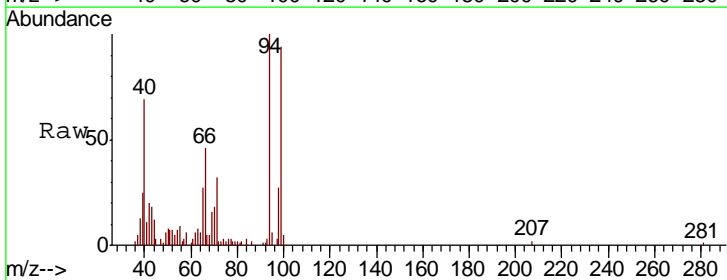
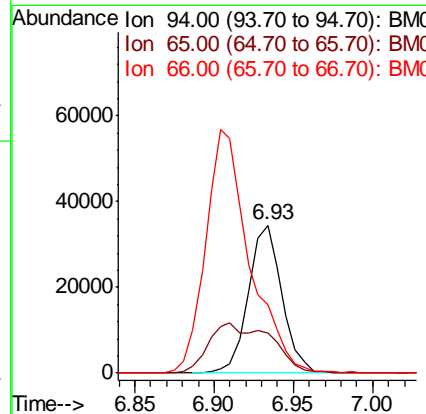
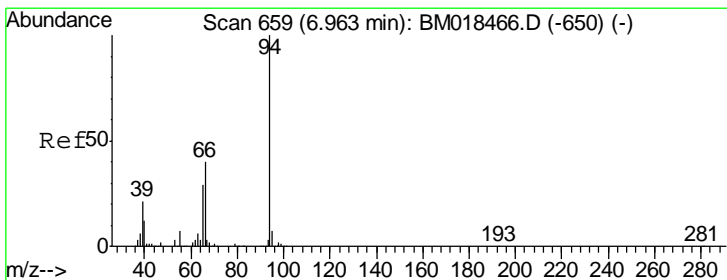
Instrument :
 BNA_M
 ClientSampled :
 WWB-6

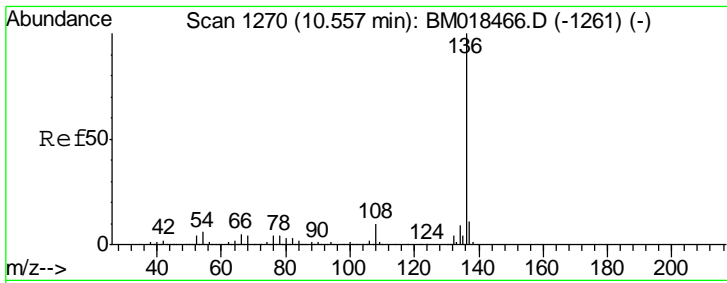
Tgt Ion	Resp	Lower	Upper
99	1794590		
42	19.8	17.3	25.9
71	35.5	28.0	42.0



#10
 Phenol
 Concen: 2.826 ng
 RT: 6.93 min Scan# 654
 Delta R.T. -0.01 min
 Lab File: BM018660.D
 Acq: 25 Jan 2019 19:46

Tgt Ion	Resp	Lower	Upper
94	50631		
65	26.8	9.4	49.4
66	46.3	19.1	59.1



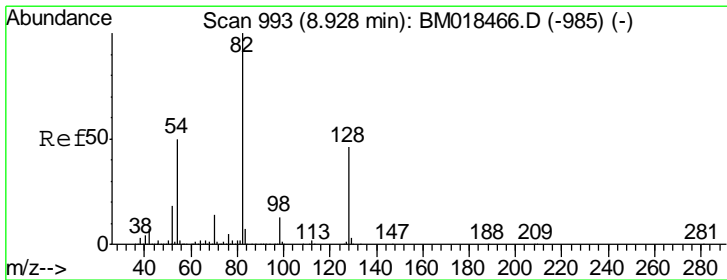
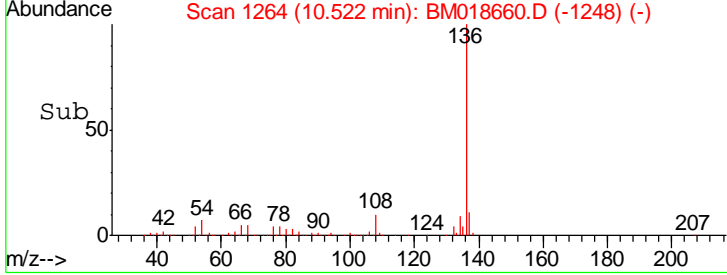
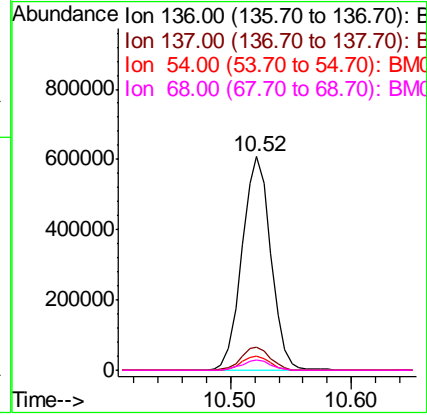
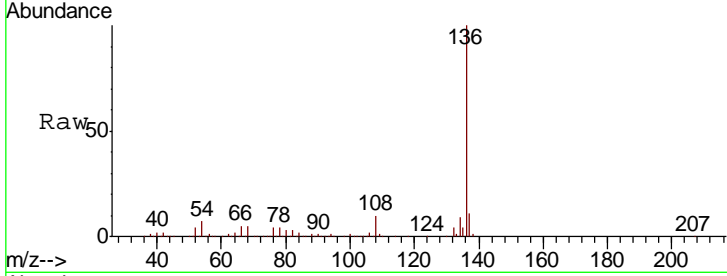


#21
 Naphthalene-d8
 Concen: 20.000 ng
 RT: 10.52 min Scan# 1264
 Delta R.T. -0.01 min
 Lab File: BM018660.D
 Acq: 25 Jan 2019 19:46

Instrument :
 BNA_M
 ClientSampled :
 WWB-6

Tgt Ion: 136 Resp: 1012596

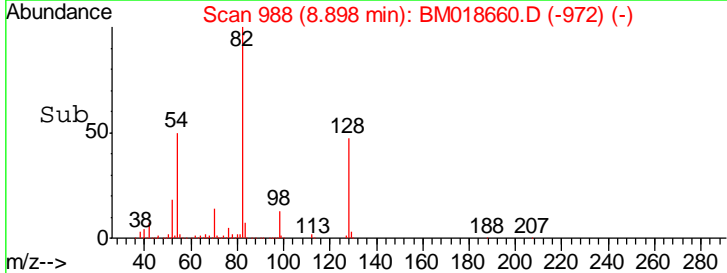
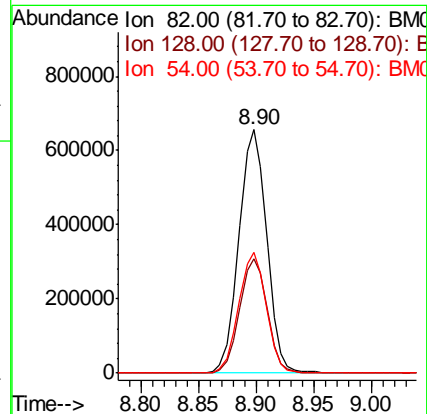
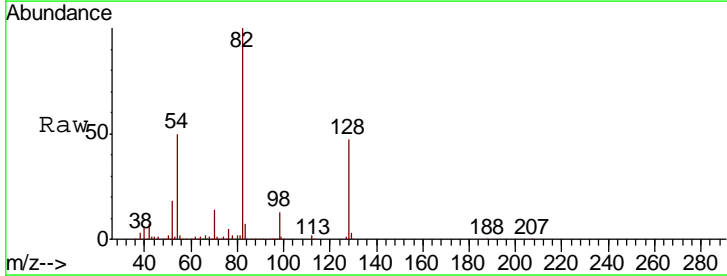
Ion	Ratio	Lower	Upper
136	100		
137	10.8	8.5	12.7
54	6.5	6.0	9.0
68	4.6	4.5	6.7

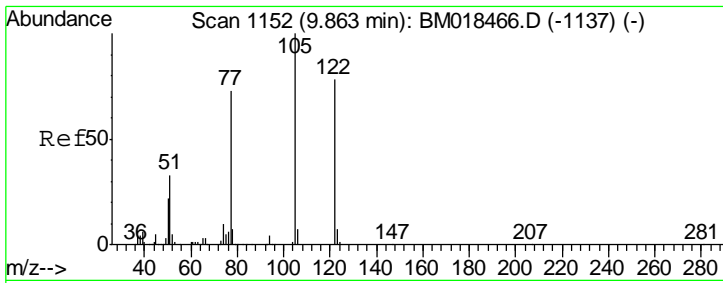


#23
 Nitrobenzene-d5
 Concen: 62.815 ng
 RT: 8.90 min Scan# 988
 Delta R.T. -0.01 min
 Lab File: BM018660.D
 Acq: 25 Jan 2019 19:46

Tgt Ion: 82 Resp: 1097211

Ion	Ratio	Lower	Upper
82	100		
128	47.1	36.3	54.5
54	49.6	41.7	62.5

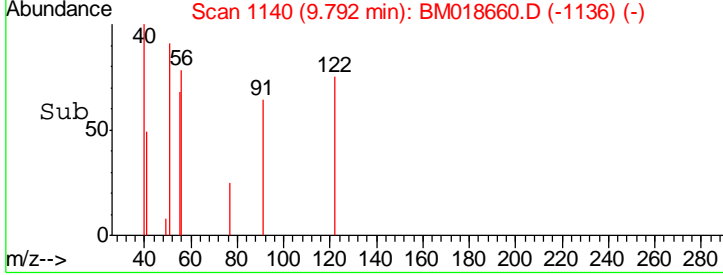
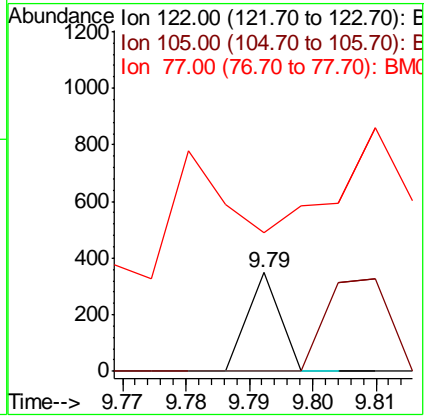
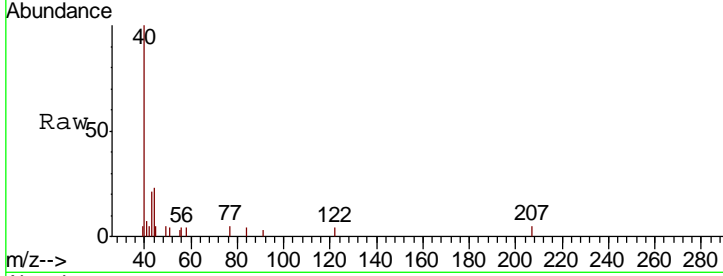




#32
 Benzoic acid
 Concen: 6.515 ng
 RT: 9.79 min Scan# 1140
 Delta R.T. -0.08 min
 Lab File: BM018660.D
 Acq: 25 Jan 2019 19:46

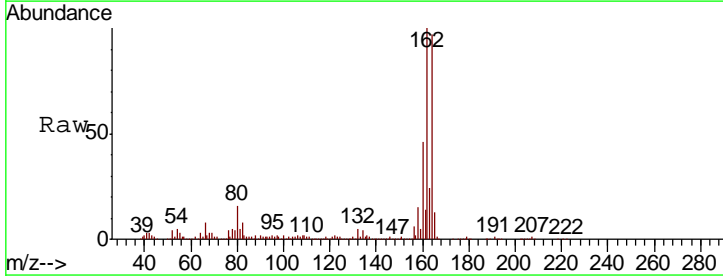
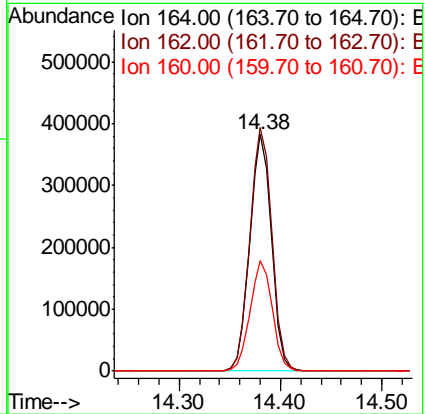
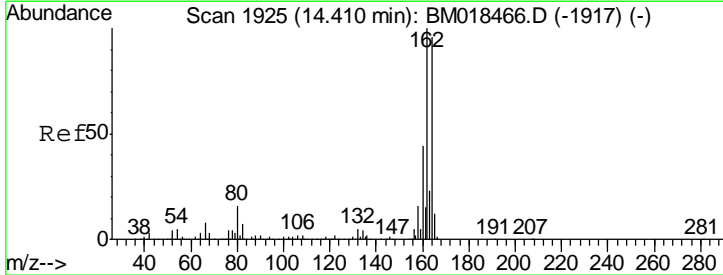
Instrument :
 BNA_M
 ClientSampled :
 WWB-6

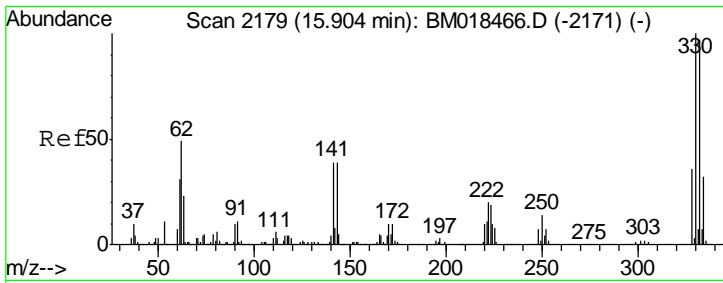
Tgt Ion	Resp	Lower	Upper
122	123		
105	0.0	100.4	140.4#
77	140.7	71.7	111.7#



#39
 Acenaphthene-d10
 Concen: 20.000 ng
 RT: 14.38 min Scan# 1920
 Delta R.T. -0.01 min
 Lab File: BM018660.D
 Acq: 25 Jan 2019 19:46

Tgt Ion	Resp	Lower	Upper
164	563703		
162	102.9	83.0	124.4
160	46.8	37.1	55.7

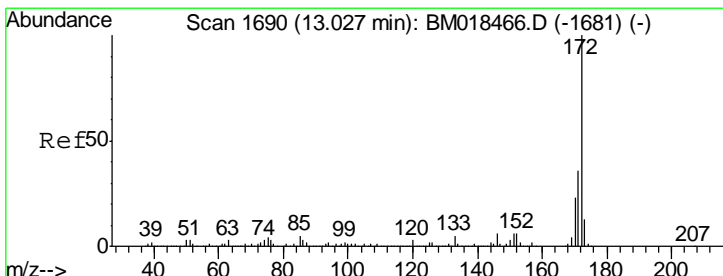
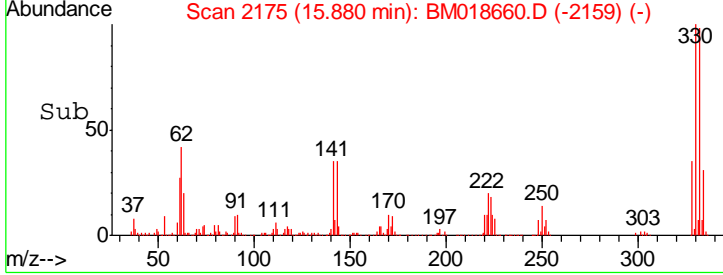
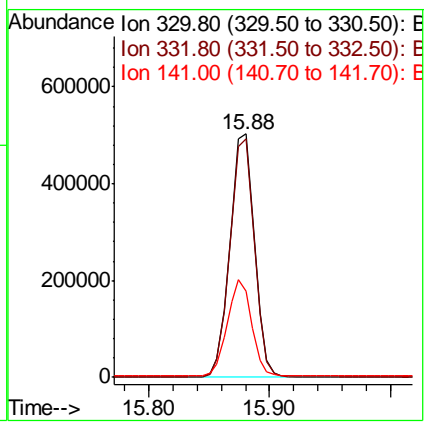
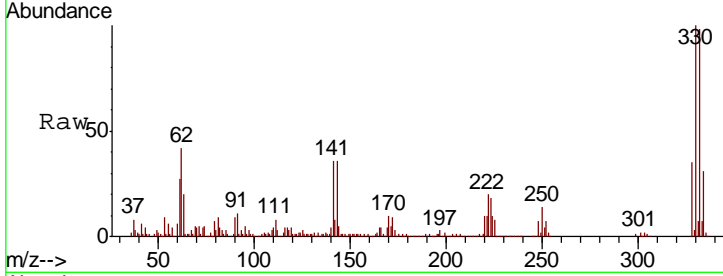




#42
 2,4,6-Tribromophenol
 Concen: 100.029 ng
 RT: 15.88 min Scan# 2175
 Delta R.T. -0.01 min
 Lab File: BM018660.D
 Acq: 25 Jan 2019 19:46

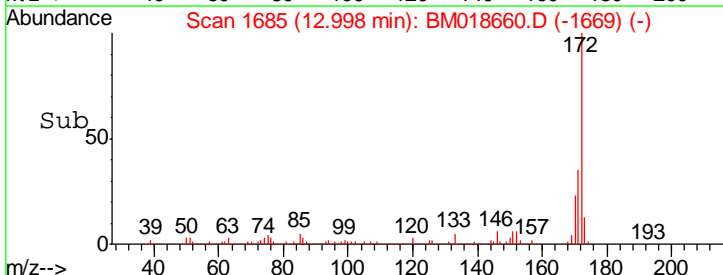
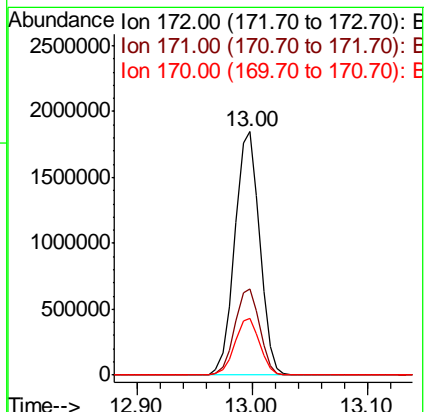
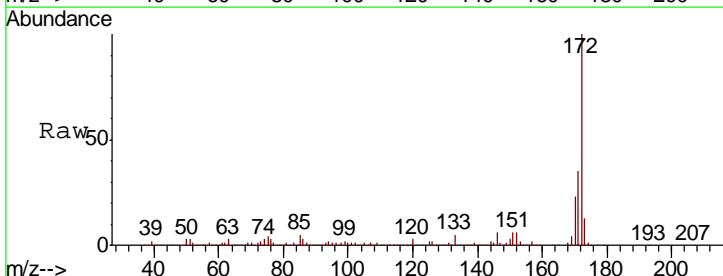
Instrument :
 BNA_M
 ClientSampled :
 WWB-6

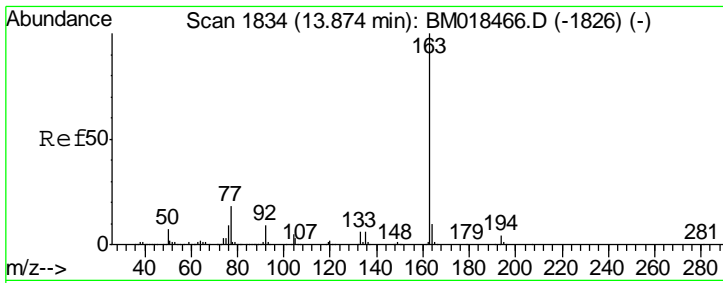
Tgt Ion	Resp	Lower	Upper
330	100		
332	97.8	77.6	116.4
141	39.0	31.7	47.5



#45
 2-Fluorobiphenyl
 Concen: 63.717 ng
 RT: 13.00 min Scan# 1685
 Delta R.T. -0.01 min
 Lab File: BM018660.D
 Acq: 25 Jan 2019 19:46

Tgt Ion	Resp	Lower	Upper
172	100		
171	35.3	28.2	42.4
170	23.5	18.9	28.3

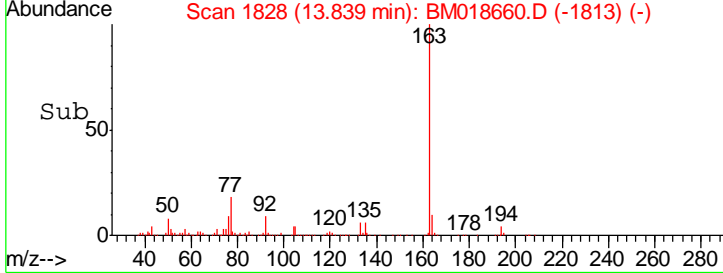
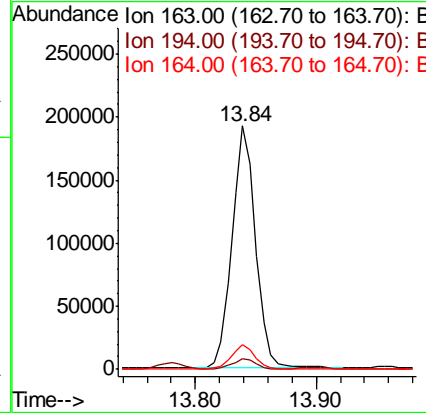
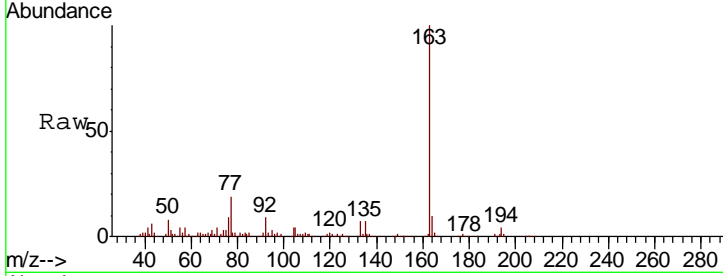




#50
 Dimethylphthalate
 Concen: 5.571 ng
 RT: 13.84 min Scan# 1828
 Delta R.T. -0.01 min
 Lab File: BM018660.D
 Acq: 25 Jan 2019 19:46

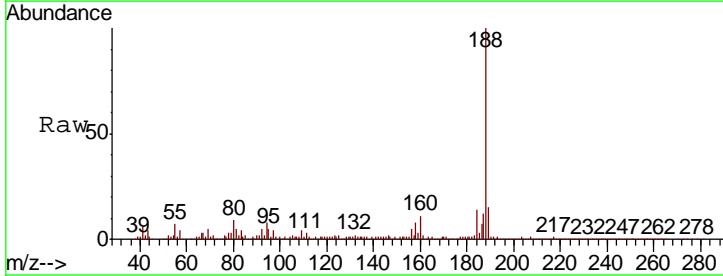
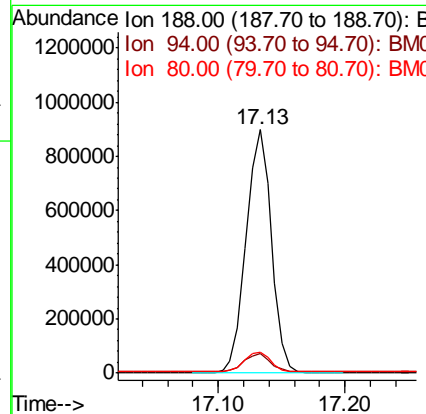
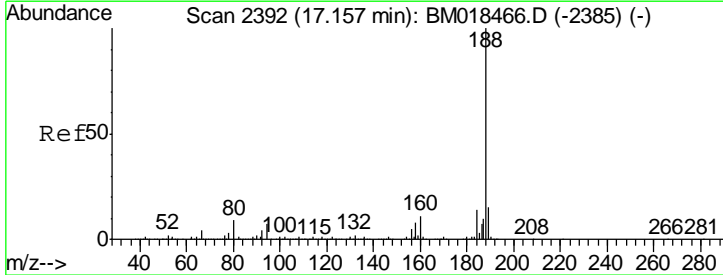
Instrument :
 BNA_M
 ClientSampled :
 WWB-6

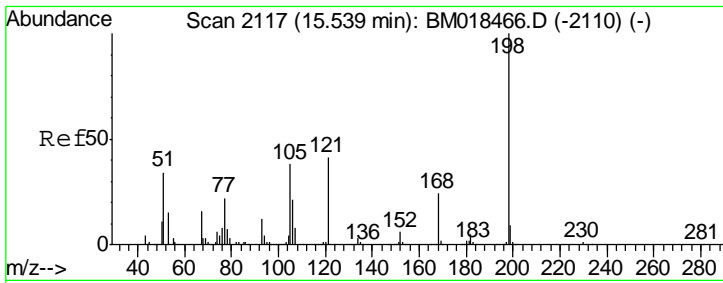
Tgt Ion	Resp	Lower	Upper
163	100		
194	4.4	3.0	4.6
164	10.4	7.8	11.8



#64
 Phenanthrene-d10
 Concen: 20.000 ng
 RT: 17.13 min Scan# 2388
 Delta R.T. -0.01 min
 Lab File: BM018660.D
 Acq: 25 Jan 2019 19:46

Tgt Ion	Resp	Lower	Upper
188	100		
94	8.0	7.1	10.7
80	8.8	7.6	11.4

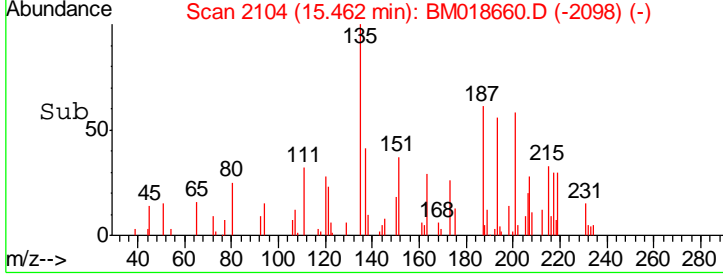
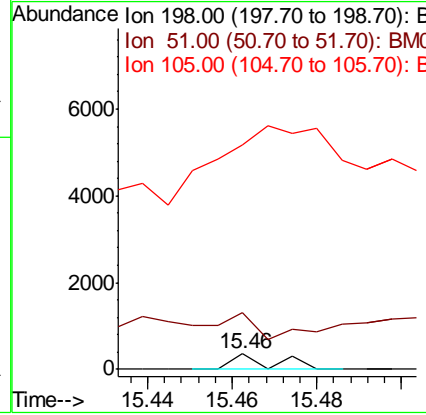
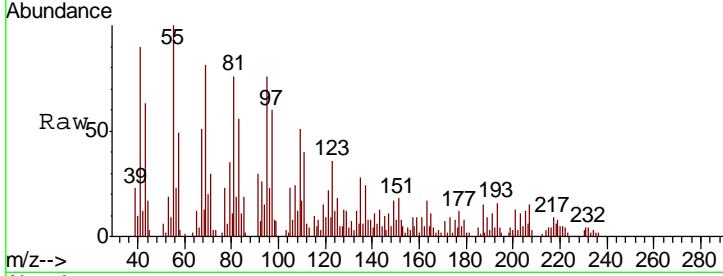




#65
 4,6-Dinitro-2-methylphenol
 Concen: 5.420 ng
 RT: 15.46 min Scan# 2104
 Delta R.T. -0.06 min
 Lab File: BM018660.D
 Acq: 25 Jan 2019 19:46

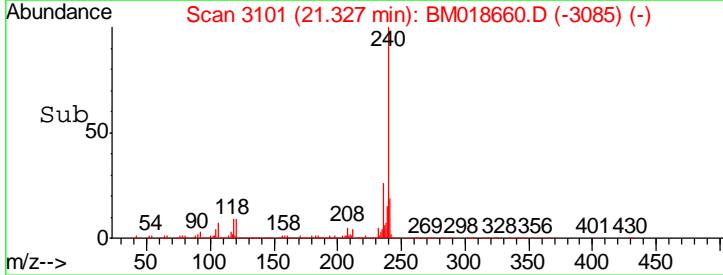
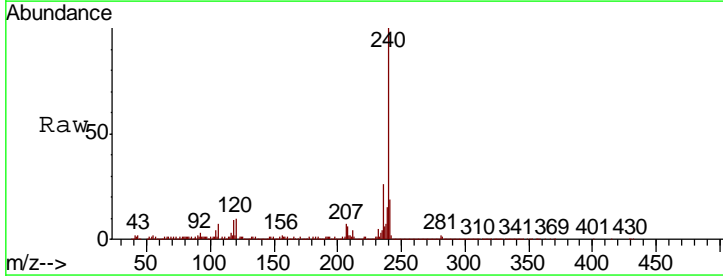
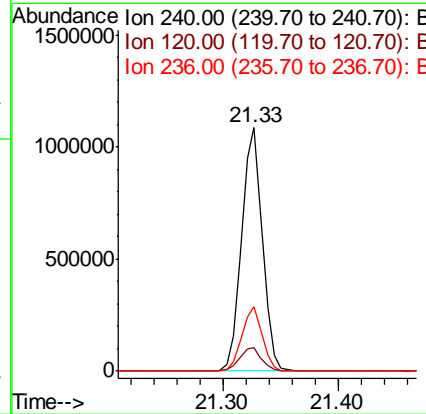
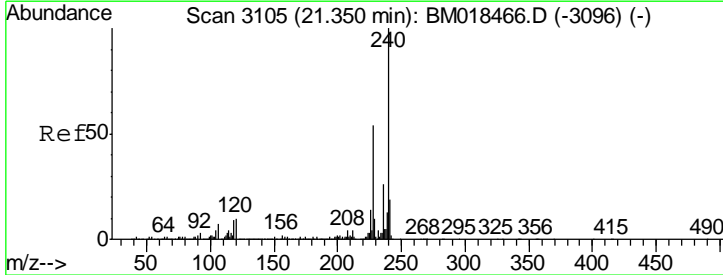
Instrument :
 BNA_M
 ClientSampled :
 WWB-6

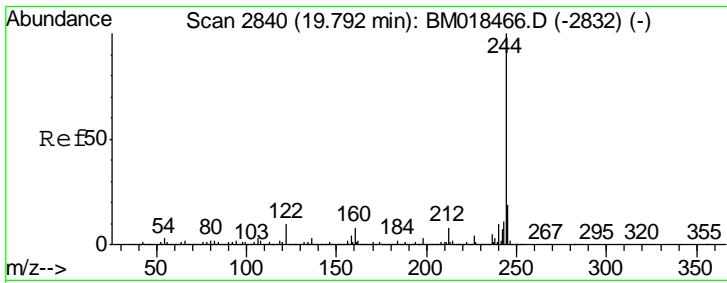
Tgt Ion	Resp	Lower	Upper
198	100		
51	363.4	29.6	69.6#
105	1421.2	25.5	65.5#



#76
 Chrysene-d12
 Concen: 20.000 ng
 RT: 21.33 min Scan# 3101
 Delta R.T. -0.01 min
 Lab File: BM018660.D
 Acq: 25 Jan 2019 19:46

Tgt Ion	Resp	Lower	Upper
240	100		
120	9.5	8.4	12.6
236	26.4	20.7	31.1



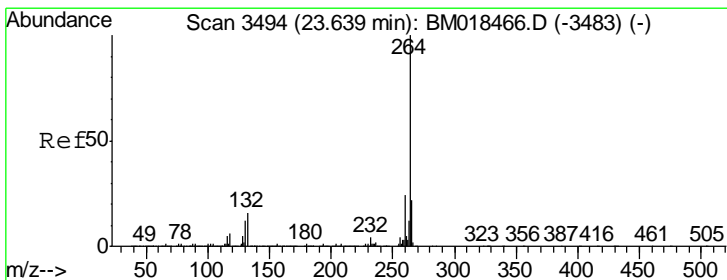
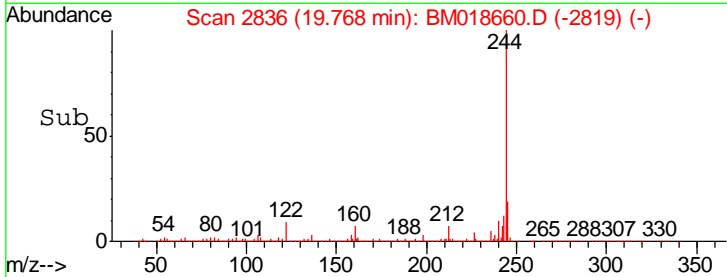
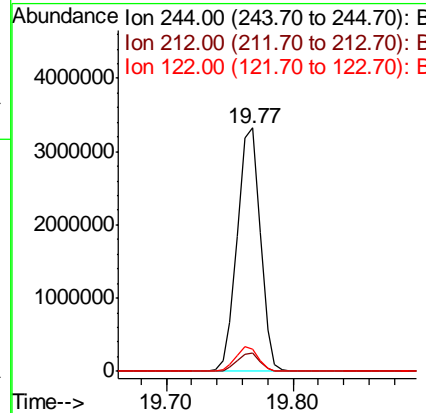
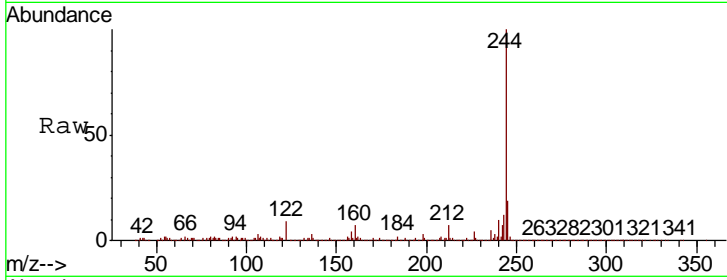


#79
 Terphenyl-d14
 Concen: 64.989 ng
 RT: 19.77 min Scan# 2836
 Delta R.T. -0.00 min
 Lab File: BM018660.D
 Acq: 25 Jan 2019 19:46

Instrument :
 BNA_M
 ClientSampled :
 WWB-6

Tgt Ion: 244 Resp: 4149056

Ion	Ratio	Lower	Upper
244	100		
212	7.3	5.9	8.9
122	9.1	9.0	13.4



#87
 Perylene-d12
 Concen: 20.000 ng
 RT: 23.60 min Scan# 3487
 Delta R.T. -0.01 min
 Lab File: BM018660.D
 Acq: 25 Jan 2019 19:46

Tgt Ion: 264 Resp: 1407088

Ion	Ratio	Lower	Upper
264	100		
260	23.4	18.9	28.3
265	22.1	16.8	25.2

