

Data Path : Z:\SVOASRV\HPCHEM1\BNA M\DATA\BM022420\  
 Data File : BM025033.D  
 Acq On : 24 Feb 2020 22:00  
 Operator : CG/JU  
 Sample : SSTD3.276  
 Misc :  
 ALS Vial : 7 Sample Multiplier: 1

Instrument :  
 BNA\_M  
 ClientSampleId :

Quant Time: Feb 25 00:51:59 2020  
 Quant Method : Z:\SVOASRV\HPCHEM1\BNA M\METHODS\SOM-EPA-SIM-BM022420.M  
 Quant Title : ASP BNA STANDARDS FOR 5 POINT CALIBRATION  
 QLast Update : Tue Feb 25 00:46:28 2020  
 Response via : Initial Calibration

Internal Standards	R.T.	QIon	Response	Conc	Units	Dev(Min)
1) 1,4-Dichlorobenzene-d4	7.70	152	2134	0.40	ng/ul	0.00
2) Naphthalene-d8	10.47	136	8909	0.40	ng/ul	0.00
6) Acenaphthene-d10	14.33	164	6036	0.40	ng/ul	0.00
10) Phenanthrene-d10	17.07	188	14558	0.40	ng/ul	0.00
16) Chrysene-d12	21.25	240	15663	0.40	ng/ul	0.00
20) Perylene-d12	23.45	264	17215	0.40	ng/ul	0.00

System Monitoring Compounds	R.T.	QIon	Response	Conc	Units	Dev(Min)
4) 2-Methylnaphthalene-d10	12.07	152	48981	3.35	ng/ul	0.00
14) Fluoranthene-d10	19.10	212	144134	3.61	ng/ul	0.00

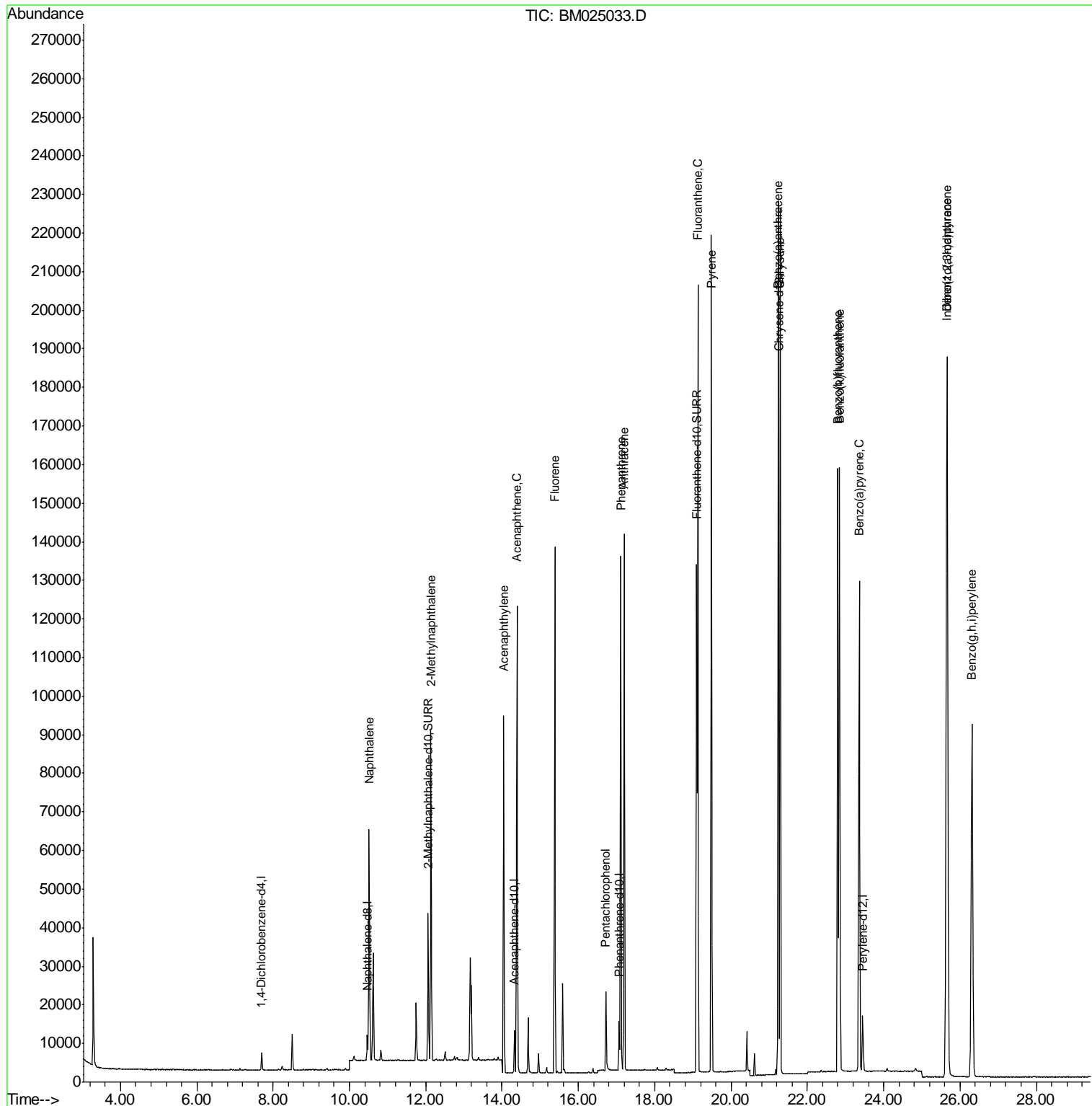
Target Compounds	R.T.	QIon	Response	Conc	Units	Ovalue
3) Naphthalene	10.52	128	79061	3.115	ng/ul#	83
5) 2-Methylnaphthalene	12.14	142	57831	3.323	ng/ul	100
7) Acenaphthylene	14.04	152	105124	3.762	ng/ul	94
8) Acenaphthene	14.39	153	67669	2.893	ng/ul	97
9) Fluorene	15.38	166	83006	3.097	ng/ul	95
11) Pentachlorophenol	16.72	266	14141	4.789	ng/ul	98
12) Phenanthrene	17.11	178	136550	2.944	ng/ul	95
13) Anthracene	17.20	178	140538	3.532	ng/ul	95
15) Fluoranthene	19.13	202	175461	3.506	ng/ul	96
17) Pyrene	19.49	202	179971	2.535	ng/ul	96
18) Benzo(a)anthracene	21.24	228	185449	3.094	ng/ul	98
19) Chrysene	21.29	228	181147	2.872	ng/ul	98
21) Benzo(b)fluoranthene	22.80	252	196963	2.633	ng/ul	90
22) Benzo(k)fluoranthene	22.84	252	191655	2.512	ng/ul#	91
23) Benzo(a)pyrene	23.36	252	181497	2.773	ng/ul#	88
24) Indeno(1,2,3-cd)pyrene	25.65	276	229816	2.879	ng/ul#	100
25) Dibenzo(a,h)anthracene	25.67	278	190884	2.959	ng/ul#	93
26) Benzo(g,h,i)perylene	26.32	276	193365	3.040	ng/ul#	91

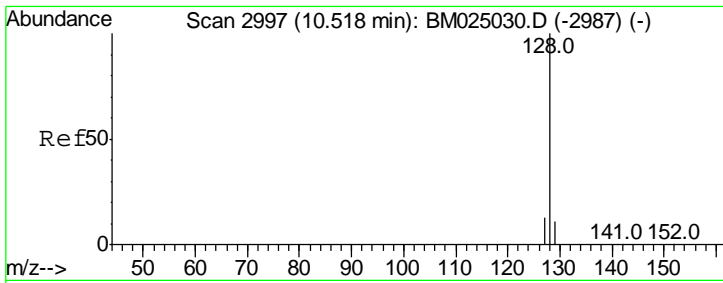
(#) = qualifier out of range (m) = manual integration (+) = signals summed

Data Path : Z:\SVOASRV\HPCHEM1\BNA M\DATA\BM022420\  
 Data File : BM025033.D  
 Acq On : 24 Feb 2020 22:00  
 Operator : CG/JU  
 Sample : SSTD3.276  
 Misc :  
 ALS Vial : 7 Sample Multiplier: 1

Instrument :  
 BNA\_M  
 ClientSampled :

Quant Time: Feb 25 00:51:59 2020  
 Quant Method : Z:\SVOASRV\HPCHEM1\BNA M\METHODS\SOM-EPA-SIM-BM022420.M  
 Quant Title : ASP BNA STANDARDS FOR 5 POINT CALIBRATION  
 QLast Update : Tue Feb 25 00:46:28 2020  
 Response via : Initial Calibration

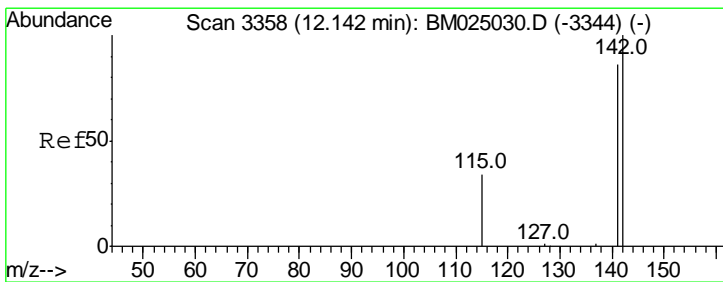
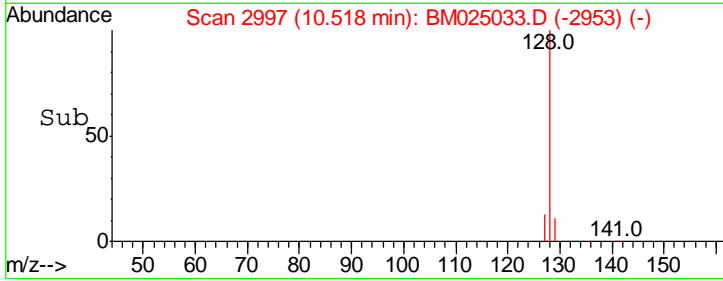
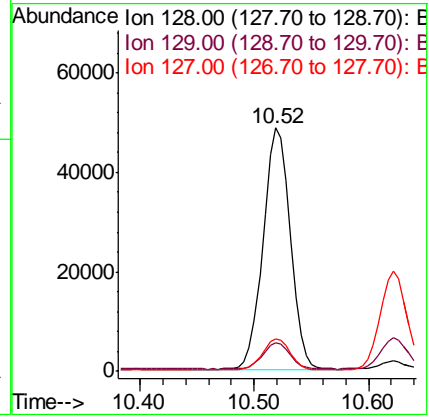
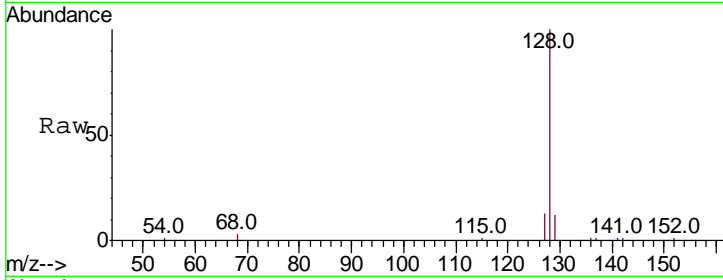




#3  
 Naphthalene  
 Concen: 3.115 ng/ul  
 RT: 10.52 min Scan# 2997  
 Delta R.T. -0.00 min  
 Lab File: BM025033.D  
 Acq: 24 Feb 2020 22:00

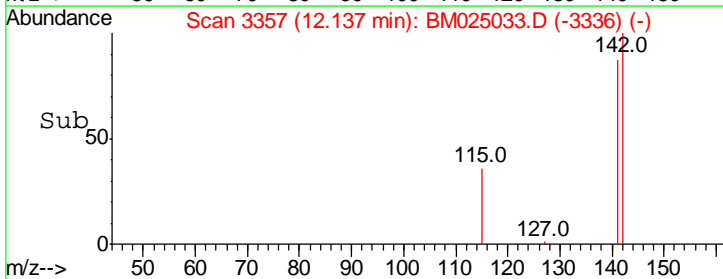
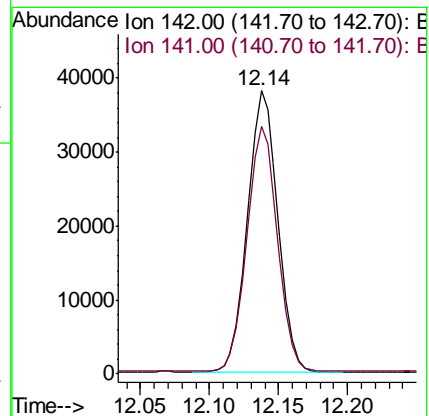
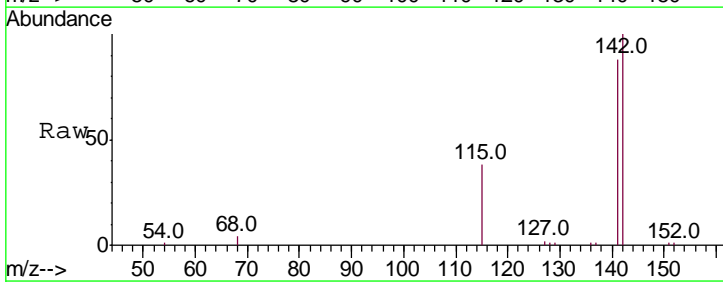
Instrument :  
 BNA\_M  
 ClientSampled :

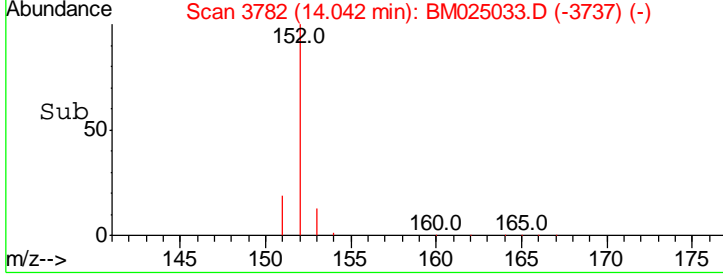
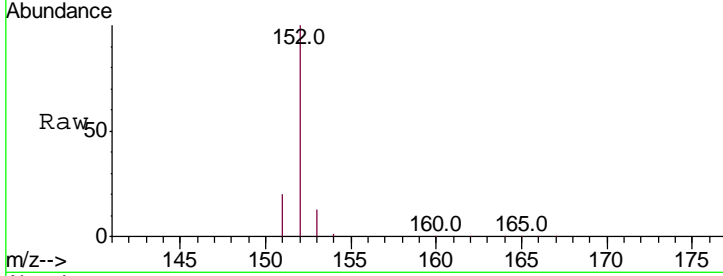
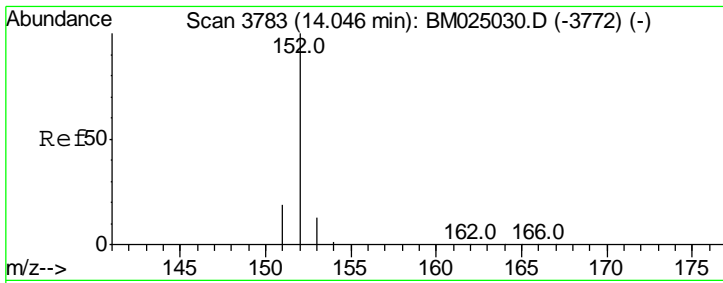
Tgt Ion	Resp	Lower	Upper
128	100		
129	11.8	17.0	25.6#
127	13.4	15.7	23.5#



#5  
 2-Methylnaphthalene  
 Concen: 3.323 ng/ul  
 RT: 12.14 min Scan# 3357  
 Delta R.T. -0.00 min  
 Lab File: BM025033.D  
 Acq: 24 Feb 2020 22:00

Tgt Ion	Resp	Lower	Upper
142	100		
141	87.5	69.8	104.8

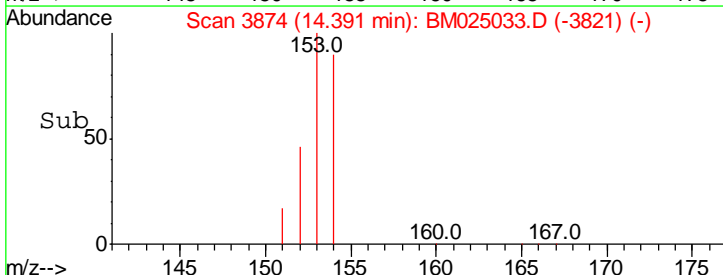
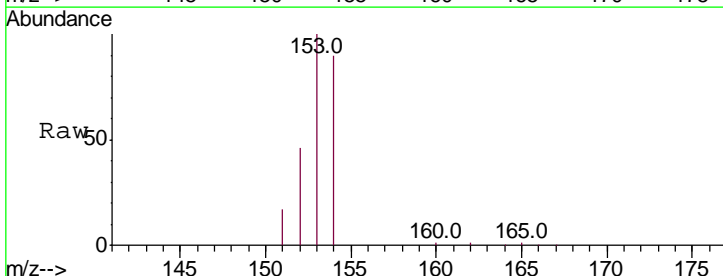
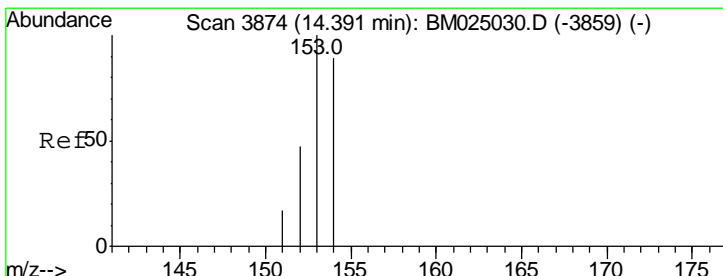
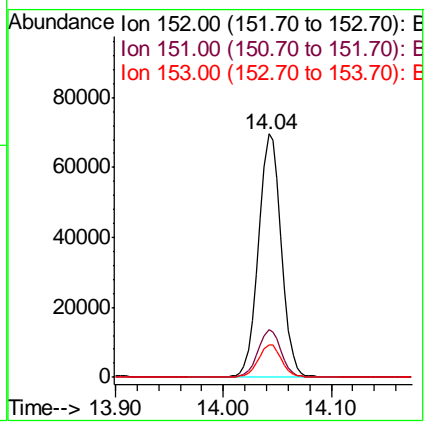




#7  
 Acenaphthylene  
 Concen: 3.762 ng/ul  
 RT: 14.04 min Scan# 3782  
 Delta R.T. -0.00 min  
 Lab File: BM025033.D  
 Acq: 24 Feb 2020 22:00

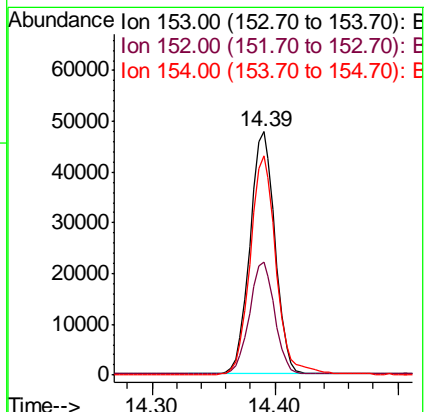
Instrument :  
 BNA\_M  
 ClientSampled :

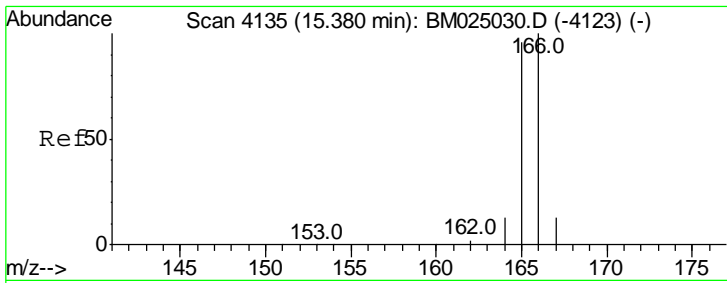
Tgt Ion	Resp	Lower	Upper
152	105124		
151	19.7	17.8	26.8
153	13.4	13.3	19.9



#8  
 Acenaphthene  
 Concen: 2.893 ng/ul  
 RT: 14.39 min Scan# 3874  
 Delta R.T. -0.00 min  
 Lab File: BM025033.D  
 Acq: 24 Feb 2020 22:00

Tgt Ion	Resp	Lower	Upper
153	67669		
152	46.4	40.0	60.0
154	90.2	71.0	106.6

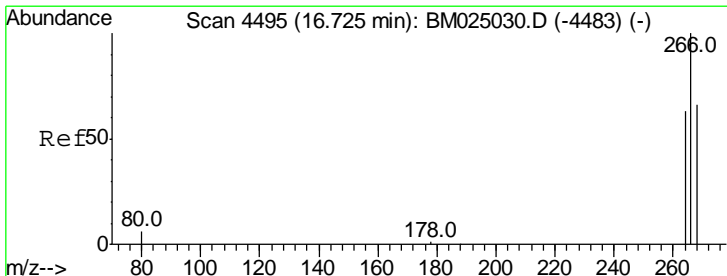
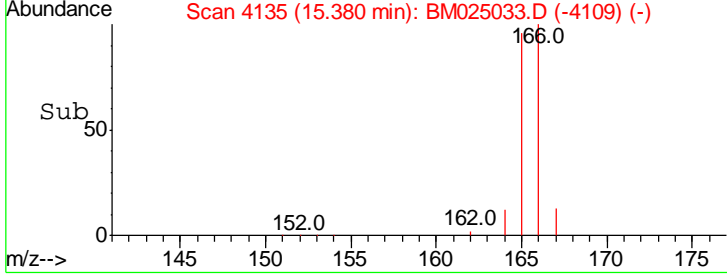
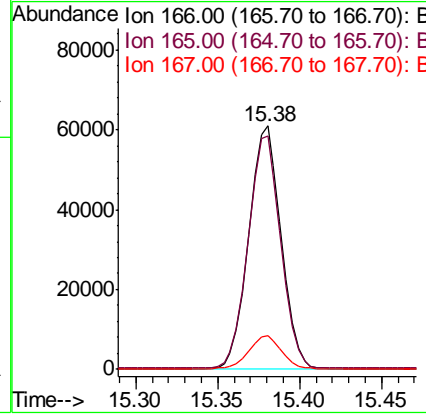
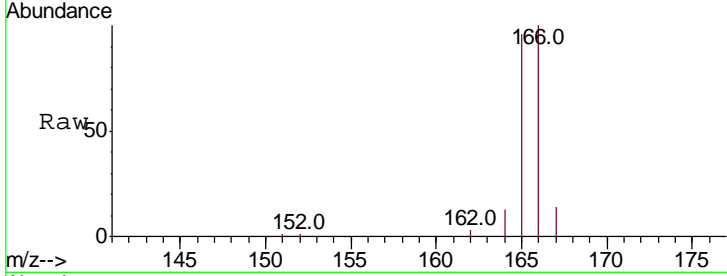




#9  
 Fluorene  
 Concen: 3.097 ng/ul  
 RT: 15.38 min Scan# 4135  
 Delta R.T. -0.00 min  
 Lab File: BM025033.D  
 Acq: 24 Feb 2020 22:00

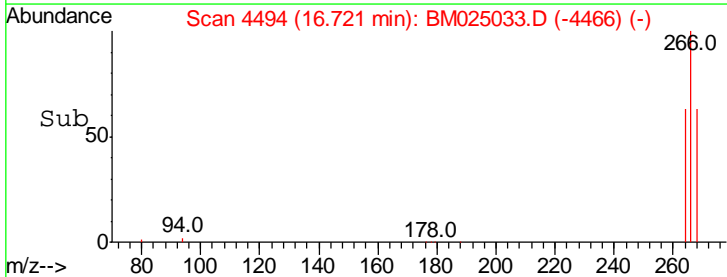
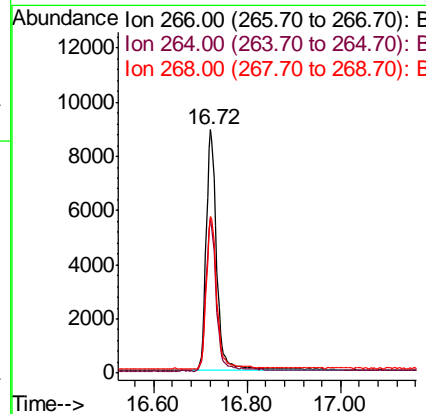
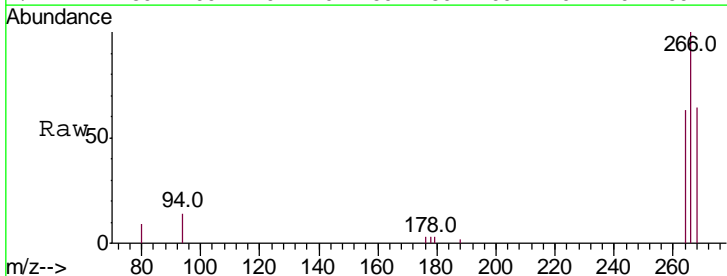
Instrument :  
 BNA\_M  
 ClientSampled :

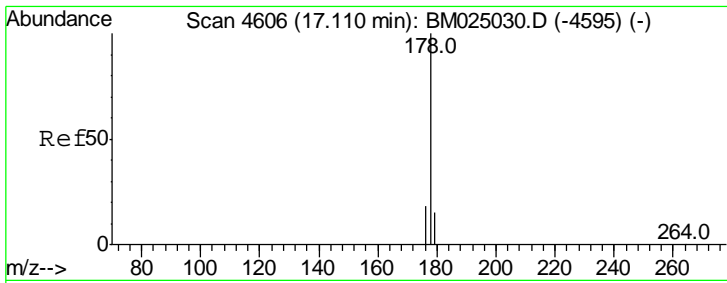
Tgt Ion	Resp	Lower	Upper
166	100		
165	95.8	80.0	120.0
167	13.7	13.7	20.5



#11  
 Pentachlorophenol  
 Concen: 4.789 ng/ul  
 RT: 16.72 min Scan# 4494  
 Delta R.T. -0.00 min  
 Lab File: BM025033.D  
 Acq: 24 Feb 2020 22:00

Tgt Ion	Resp	Lower	Upper
266	100		
264	62.9	49.8	74.6
268	63.7	49.0	73.4

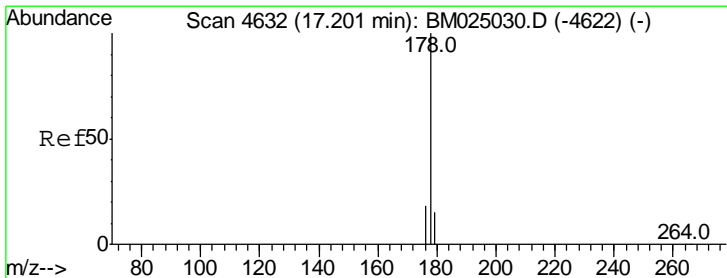
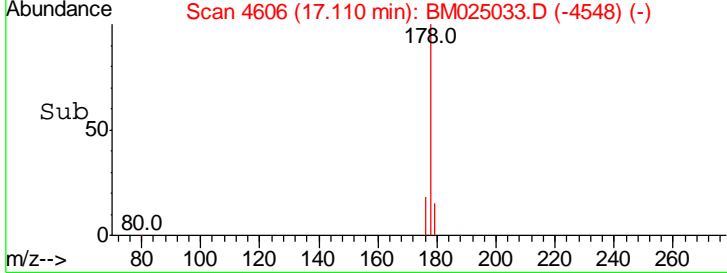
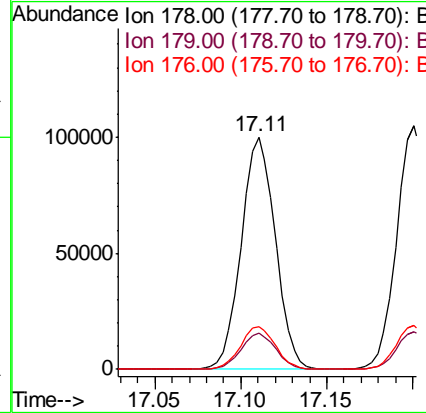
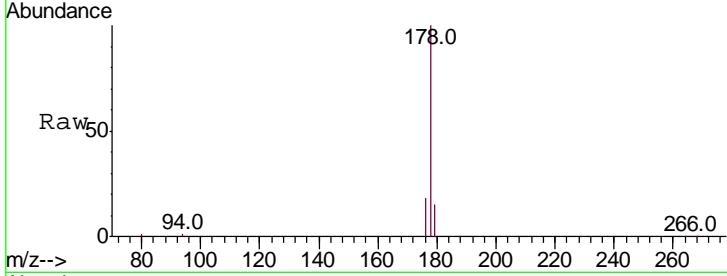




#12  
 Phenanthrene  
 Concen: 2.944 ng/ul  
 RT: 17.11 min Scan# 4606  
 Delta R.T. -0.00 min  
 Lab File: BM025033.D  
 Acq: 24 Feb 2020 22:00

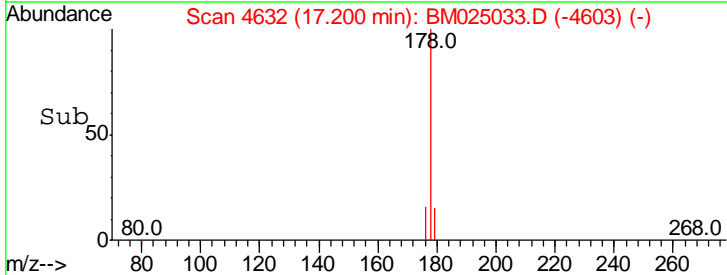
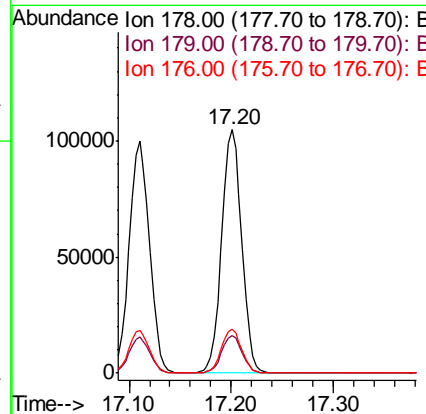
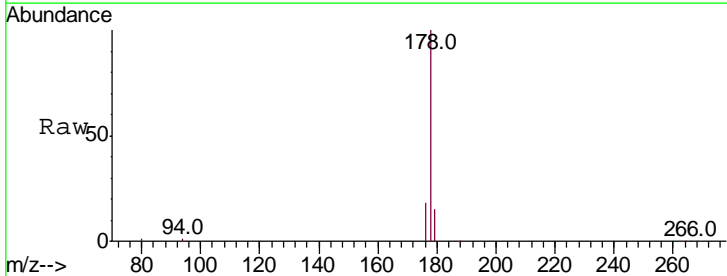
Instrument :  
 BNA\_M  
 ClientSampled :

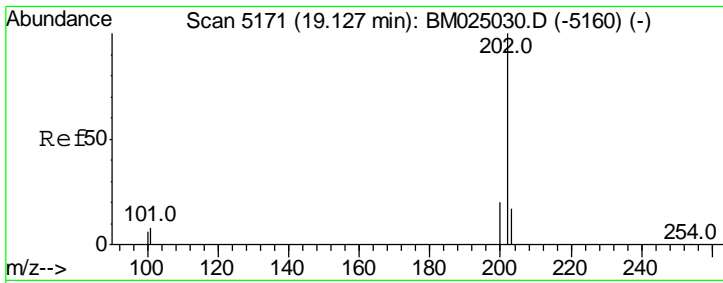
Tgt Ion	Resp	Lower	Upper
178	136550		
179	15.4	14.0	21.0
176	18.5	16.6	24.8



#13  
 Anthracene  
 Concen: 3.532 ng/ul  
 RT: 17.20 min Scan# 4632  
 Delta R.T. -0.00 min  
 Lab File: BM025033.D  
 Acq: 24 Feb 2020 22:00

Tgt Ion	Resp	Lower	Upper
178	140538		
179	15.3	14.1	21.1
176	17.9	16.2	24.4

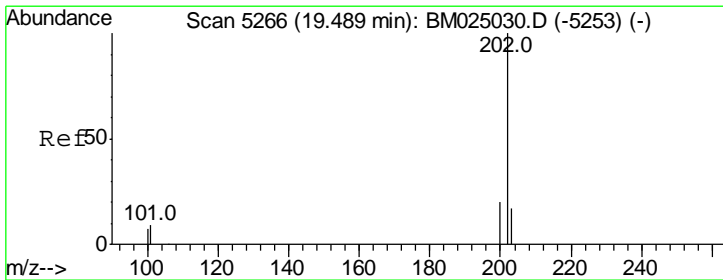
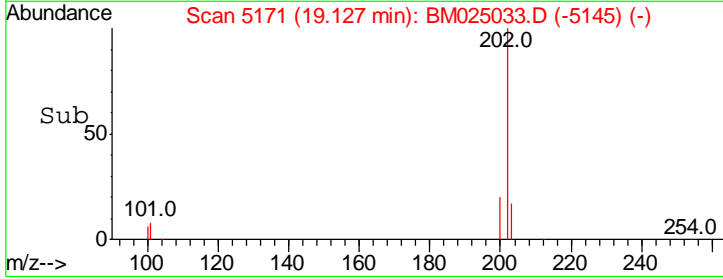
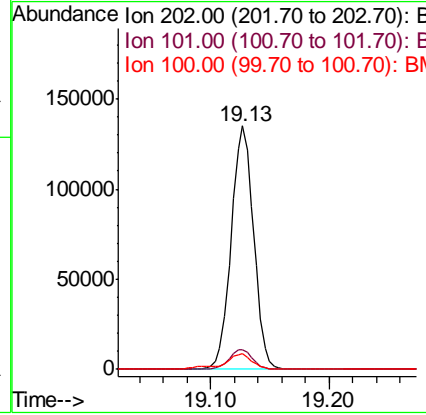
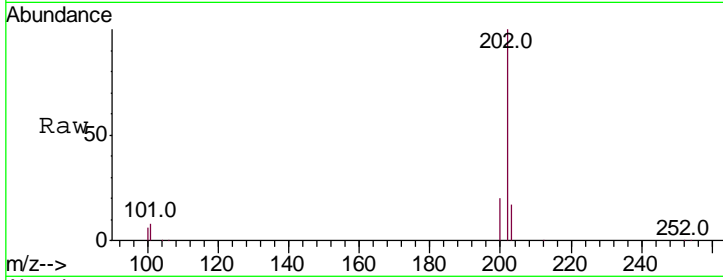




#15  
 Fluoranthene  
 Concen: 3.506 ng/ul  
 RT: 19.13 min Scan# 5171  
 Delta R.T. -0.00 min  
 Lab File: BM025033.D  
 Acq: 24 Feb 2020 22:00

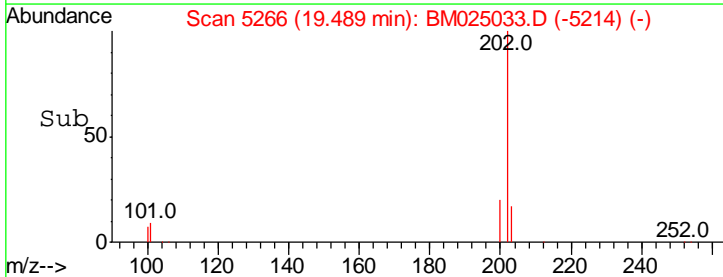
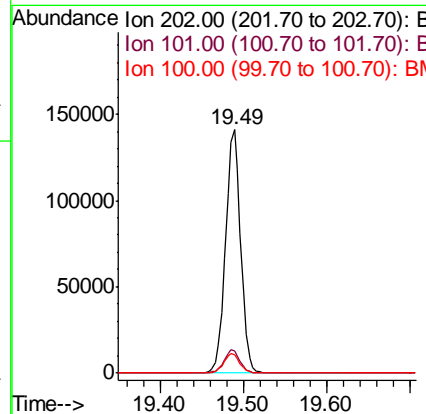
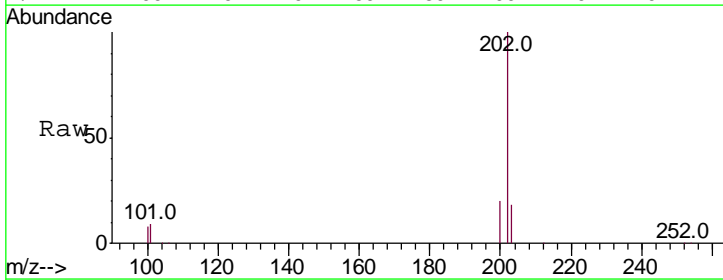
Instrument :  
 BNA\_M  
 ClientSampled :

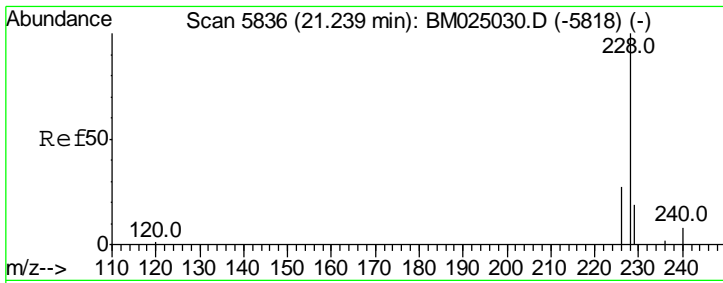
Tgt Ion	Ratio	Lower	Upper
202	100		
101	8.1	0.0	29.4
100	6.3	0.0	28.0



#17  
 Pyrene  
 Concen: 2.535 ng/ul  
 RT: 19.49 min Scan# 5266  
 Delta R.T. -0.00 min  
 Lab File: BM025033.D  
 Acq: 24 Feb 2020 22:00

Tgt Ion	Ratio	Lower	Upper
202	100		
101	9.3	8.7	13.1
100	7.6	7.3	10.9

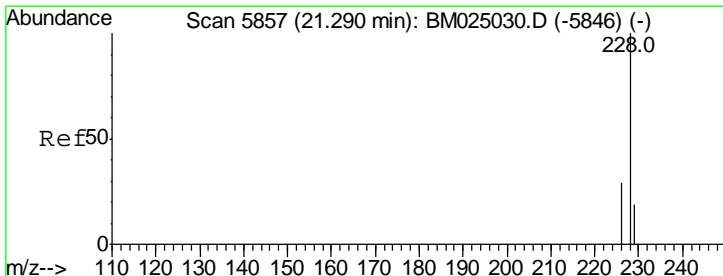
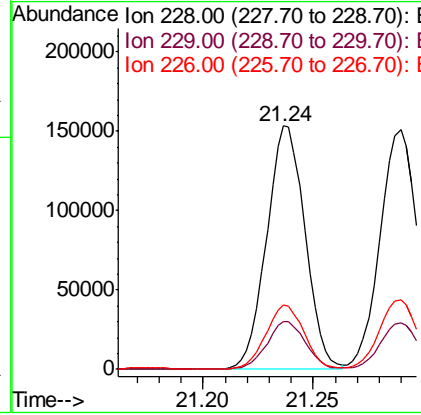
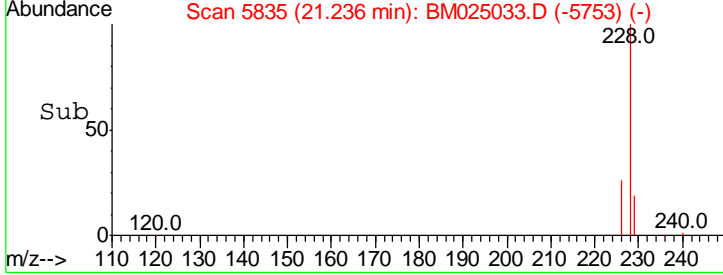
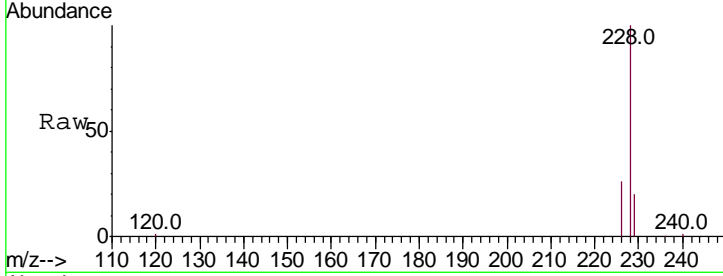




#18  
 Benzo(a)anthracene  
 Concen: 3.094 ng/ul  
 RT: 21.24 min Scan# 5835  
 Delta R.T. -0.00 min  
 Lab File: BM025033.D  
 Acq: 24 Feb 2020 22:00

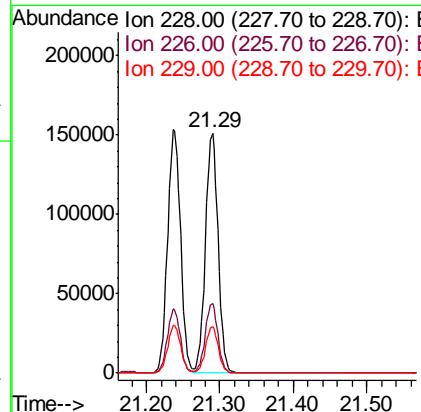
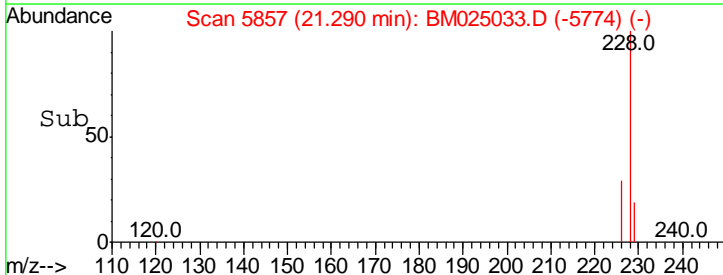
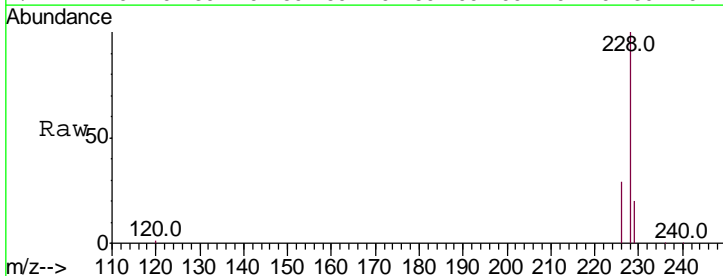
Instrument :  
 BNA\_M  
 ClientSampled :

Tgt Ion	Resp	Lower	Upper
228	185449		
229	19.5	16.6	25.0
226	26.3	21.9	32.9

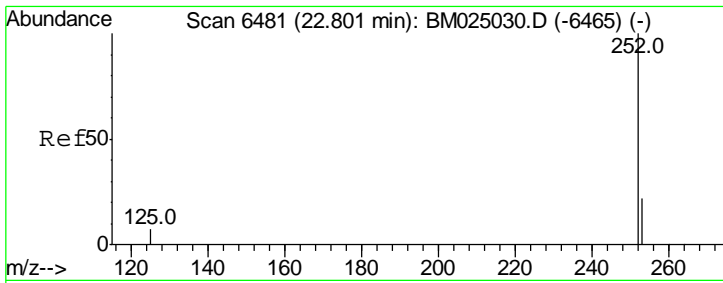


#19  
 Chrysene  
 Concen: 2.872 ng/ul  
 RT: 21.29 min Scan# 5857  
 Delta R.T. -0.00 min  
 Lab File: BM025033.D  
 Acq: 24 Feb 2020 22:00

Tgt Ion	Resp	Lower	Upper
228	181147		
226	29.0	23.8	35.8
229	19.6	16.9	25.3



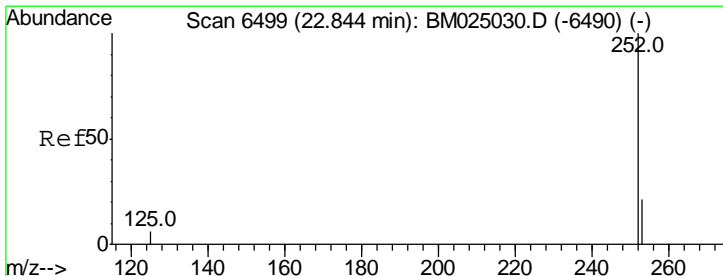
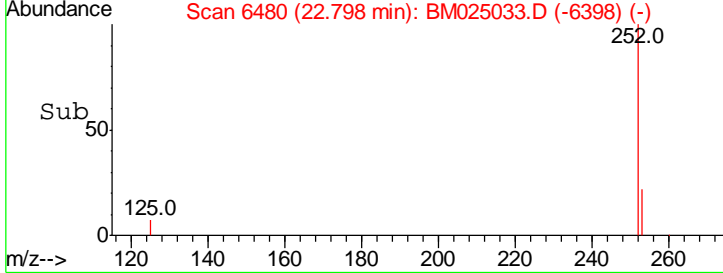
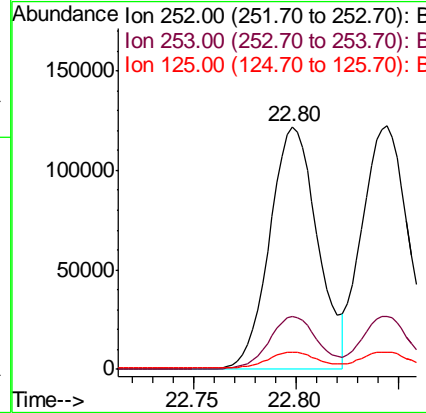
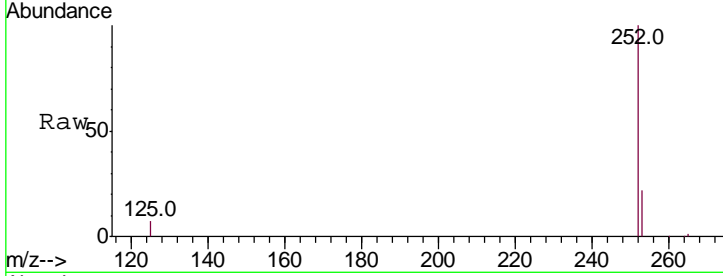




#21  
 Benzo(b)fluoranthene  
 Concen: 2.633 ng/ul  
 RT: 22.80 min Scan# 6480  
 Delta R.T. -0.00 min  
 Lab File: BM025033.D  
 Acq: 24 Feb 2020 22:00

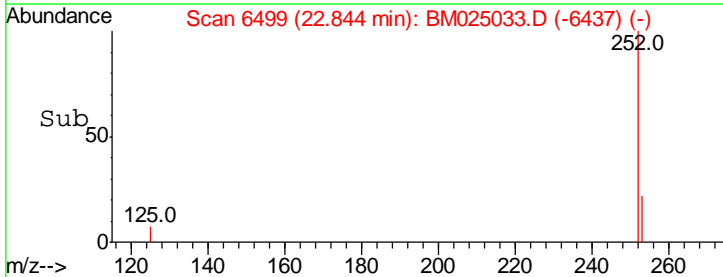
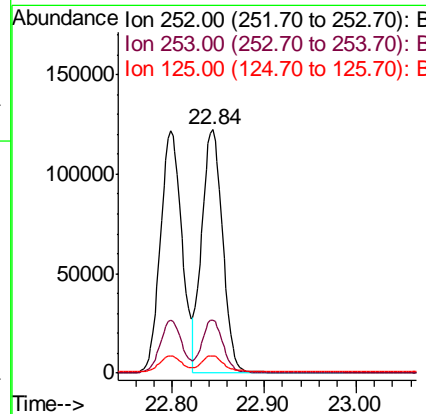
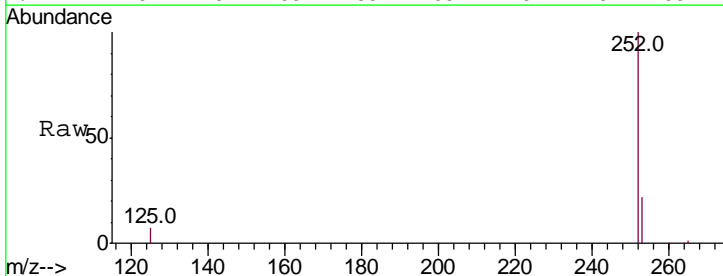
Instrument :  
 BNA\_M  
 ClientSampled :

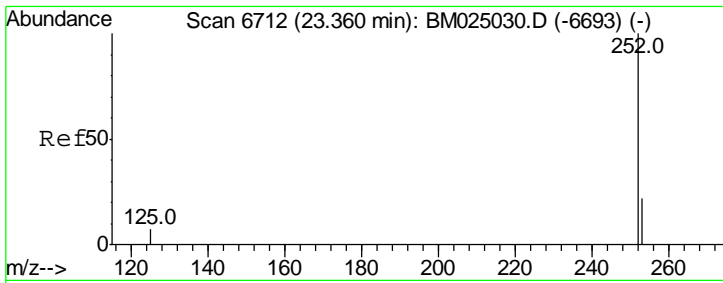
Tgt Ion	Resp	Lower	Upper
252	100		
253	22.0	0.0	49.8
125	7.2	0.0	28.6



#22  
 Benzo(k)fluoranthene  
 Concen: 2.512 ng/ul  
 RT: 22.84 min Scan# 6499  
 Delta R.T. -0.00 min  
 Lab File: BM025033.D  
 Acq: 24 Feb 2020 22:00

Tgt Ion	Resp	Lower	Upper
252	100		
253	21.9	19.4	29.0
125	7.2	10.7	16.1#

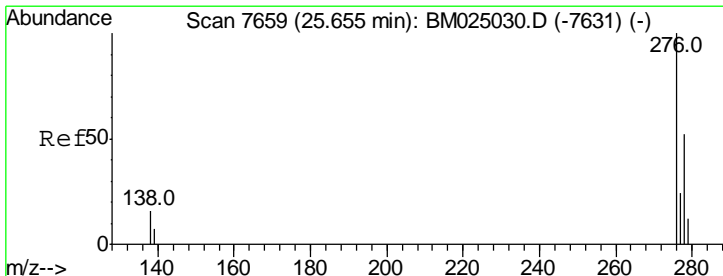
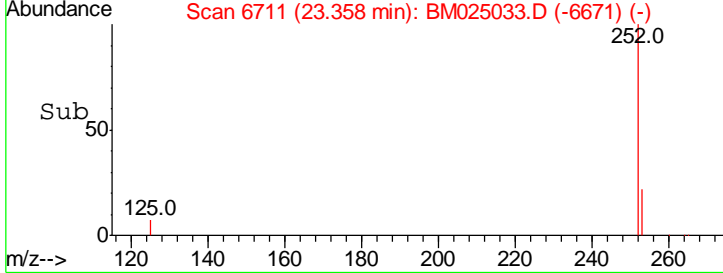
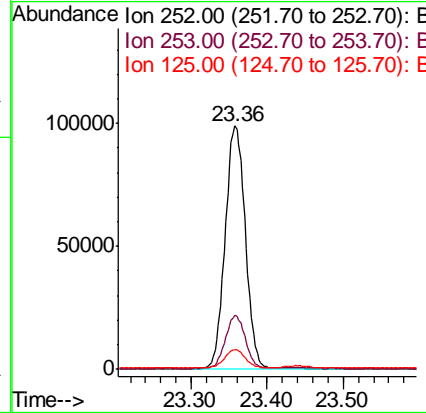
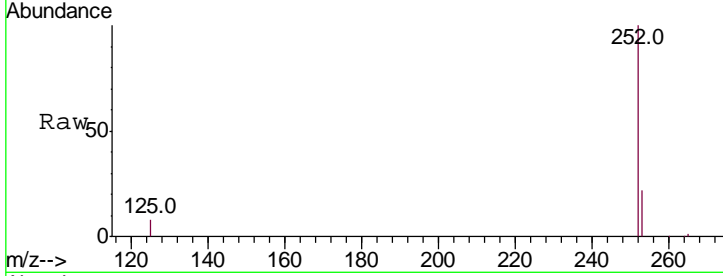




#23  
 Benzo(a)pyrene  
 Concen: 2.773 ng/ul  
 RT: 23.36 min Scan# 6711  
 Delta R.T. -0.00 min  
 Lab File: BM025033.D  
 Acq: 24 Feb 2020 22:00

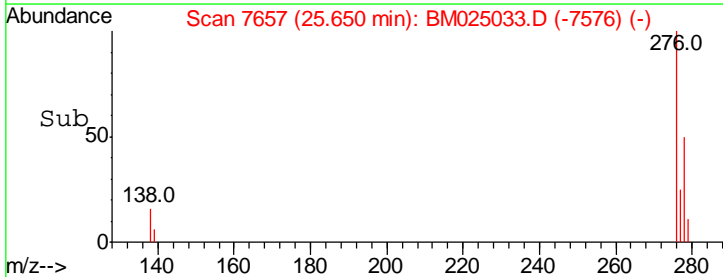
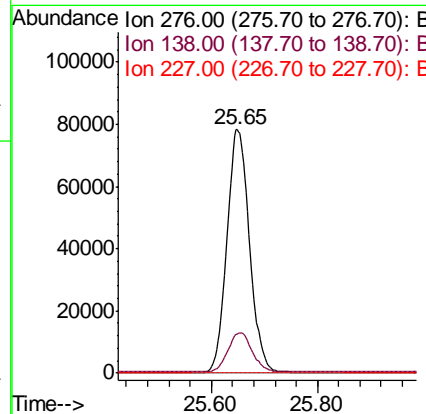
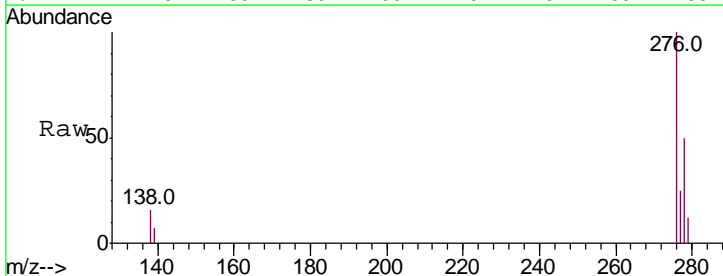
Instrument :  
 BNA\_M  
 ClientSampled :

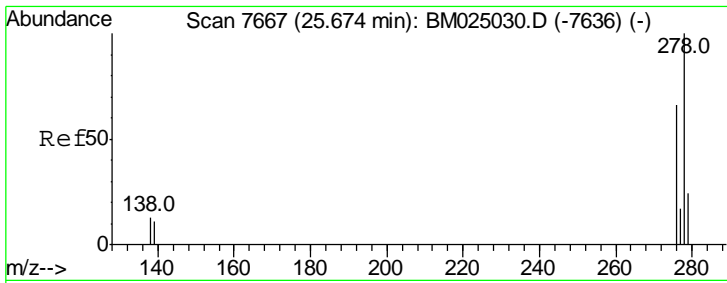
Tgt Ion	Resp	Lower	Upper
252	100		
253	22.0	20.3	30.5
125	7.9	13.0	19.4#



#24  
 Indeno(1,2,3-cd)pyrene  
 Concen: 2.879 ng/ul  
 RT: 25.65 min Scan# 7657  
 Delta R.T. -0.00 min  
 Lab File: BM025033.D  
 Acq: 24 Feb 2020 22:00

Tgt Ion	Resp	Lower	Upper
276	100		
138	17.1	0.0	0.0#
227	0.0	0.0	0.0

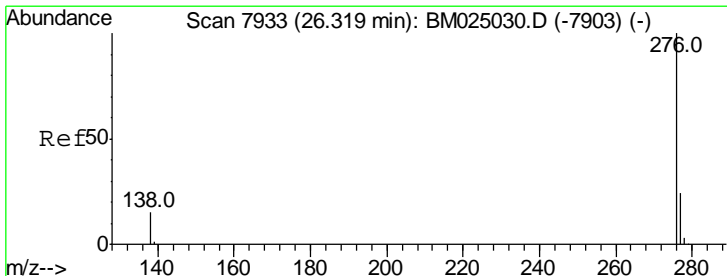
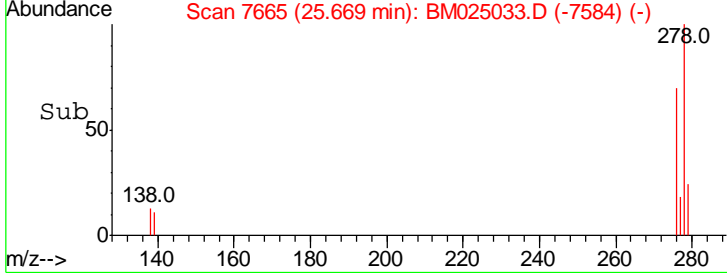
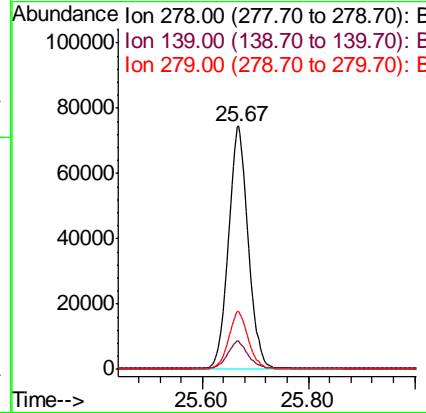
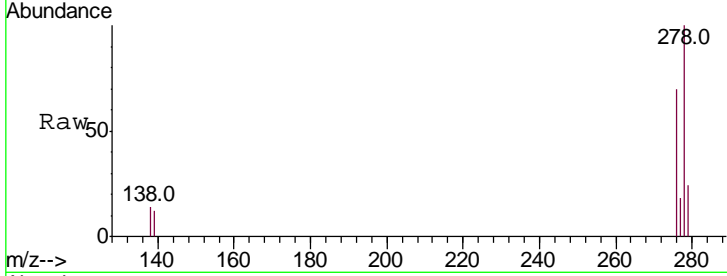




#25  
 Dibenzo(a,h)anthracene  
 Concen: 2.959 ng/ul  
 RT: 25.67 min Scan# 7665  
 Delta R.T. -0.00 min  
 Lab File: BM025033.D  
 Acq: 24 Feb 2020 22:00

Instrument :  
 BNA\_M  
 ClientSampled :

Tgt Ion	Resp	Lower	Upper
278	100		
139	11.5	13.2	19.8#
279	23.8	21.0	31.4



#26  
 Benzo(g,h,i)perylene  
 Concen: 3.040 ng/ul  
 RT: 26.32 min Scan# 7932  
 Delta R.T. -0.00 min  
 Lab File: BM025033.D  
 Acq: 24 Feb 2020 22:00

Tgt Ion	Resp	Lower	Upper
276	100		
138	14.9	17.9	26.9#
277	23.8	20.5	30.7

