

Data Path : Z:\SVOASRV\HPCHEM1\BNA M\DATA\BM022619\
 Data File : BM018935.D
 Acq On : 26 Feb 2019 18:35
 Operator : JU/SJ
 Sample : K1610-01
 Misc :
 ALS Vial : 9 Sample Multiplier: 1

Instrument :
 BNA_M
 ClientSampleId :
 WV-A

Quant Time: Feb 27 00:45:11 2019
 Quant Method : Z:\SVOASRV\HPCHEM1\BNA M\METHODS\8270-BM021119.M
 Quant Title : ASP BNA STANDARDS FOR 5 POINT CALIBRATION
 QLast Update : Mon Feb 11 16:02:12 2019
 Response via : Initial Calibration

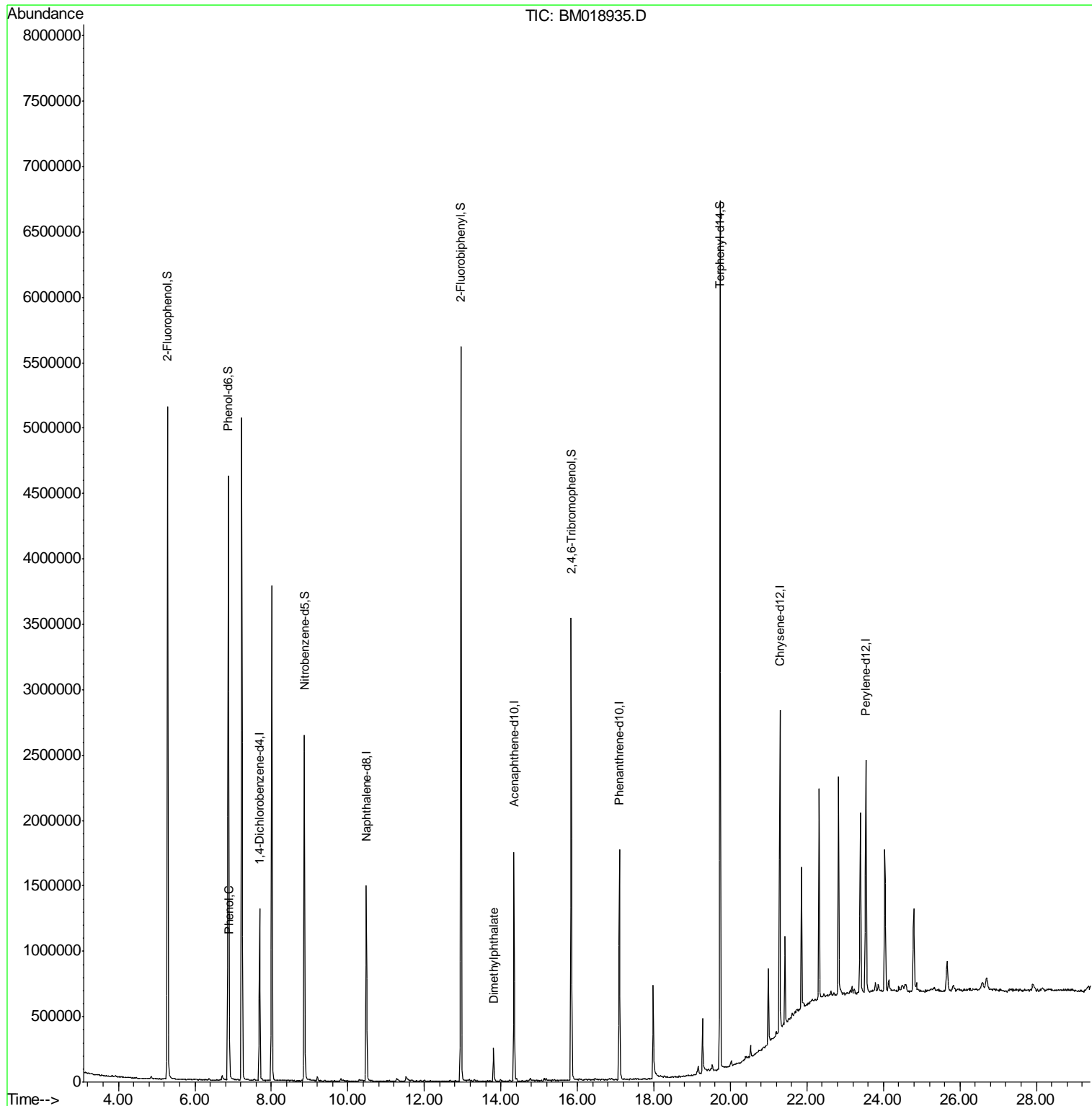
Internal Standards	R.T.	QIon	Response	Conc	Units	Dev(Min)
1) 1,4-Dichlorobenzene-d4	7.69	152	325283	20.00	ng	-0.02
21) Naphthalene-d8	10.48	136	1193501	20.00	ng	-0.02
39) Acenaphthene-d10	14.35	164	543136	20.00	ng	-0.02
64) Phenanthrene-d10	17.10	188	987705	20.00	ng	-0.02
76) Chrysene-d12	21.29	240	1071736	20.00	ng	-0.02
87) Perylene-d12	23.54	264	1223004	20.00	ng	-0.02
System Monitoring Compounds						
5) 2-Fluorophenol	5.29	112	2026359	102.07	ng	-0.02
7) Phenol-d6	6.87	99	2648649	94.70	ng	-0.02
23) Nitrobenzene-d5	8.86	82	1709312	66.22	ng	-0.02
42) 2,4,6-Tribromophenol	15.84	330	616053	78.69	ng	-0.02
45) 2-Fluorobiphenyl	12.96	172	2752225	67.27	ng	-0.02
79) Terphenyl-d14	19.73	244	2881241	55.46	ng	-0.02
Target Compounds						
10) Phenol	6.90	94	175676	5.970	ng	97
50) Dimethylphthalate	13.81	163	164382	3.632	ng	99

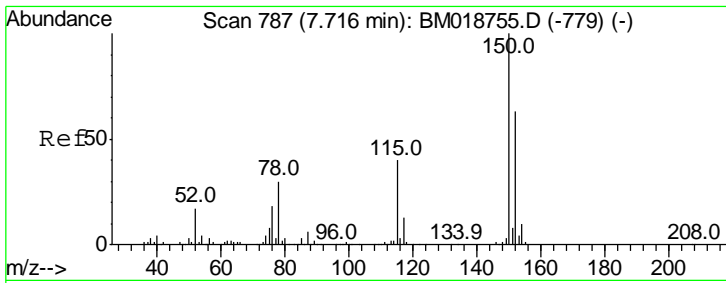
(#) = qualifier out of range (m) = manual integration (+) = signals summed

Data Path : Z:\SVOASRV\HPCHEM1\BNA M\DATA\BM022619\
 Data File : BM018935.D
 Acq On : 26 Feb 2019 18:35
 Operator : JU/SJ
 Sample : K1610-01
 Misc :
 ALS Vial : 9 Sample Multiplier: 1

Instrument :
 BNA_M
 ClientSampleId :
 WV-A

Quant Time: Feb 27 00:45:11 2019
 Quant Method : Z:\SVOASRV\HPCHEM1\BNA M\METHODS\8270-BM021119.M
 Quant Title : ASP BNA STANDARDS FOR 5 POINT CALIBRATION
 QLast Update : Mon Feb 11 16:02:12 2019
 Response via : Initial Calibration

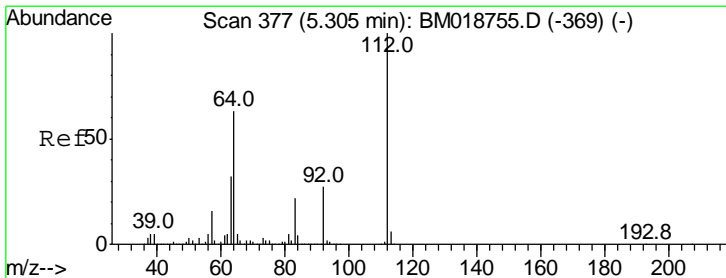
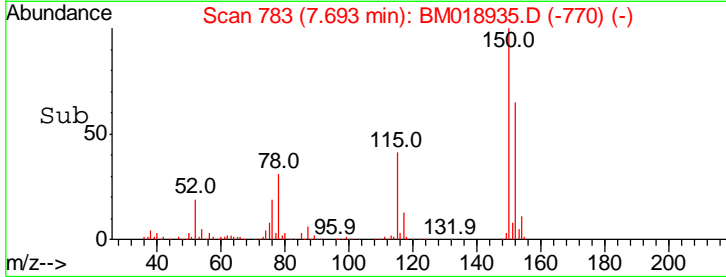
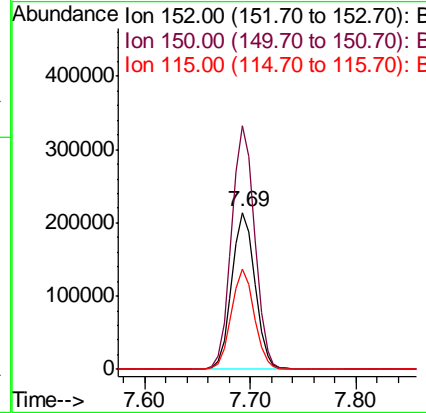
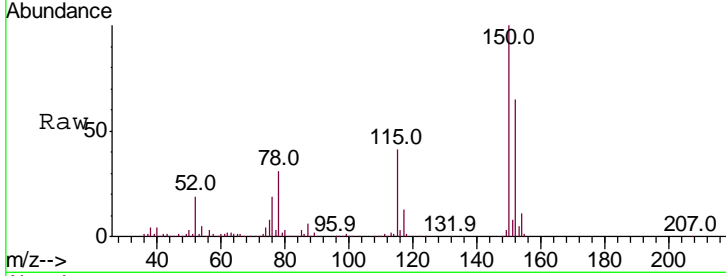




#1
 1,4-Dichlorobenzene-d4
 Concen: 20.000 ng
 RT: 7.69 min Scan# 783
 Delta R.T. -0.02 min
 Lab File: BM018935.D
 Acq: 26 Feb 2019 18:35

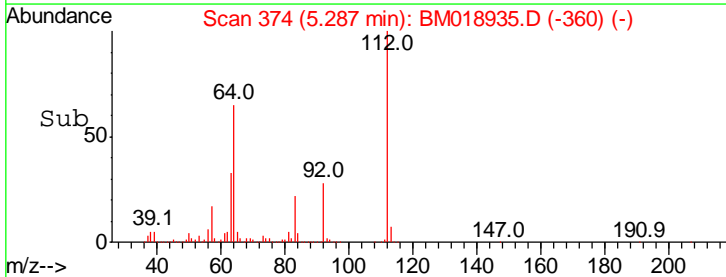
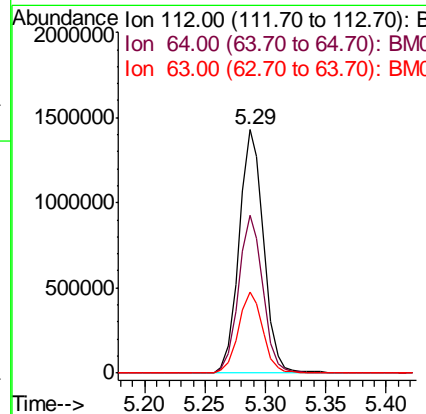
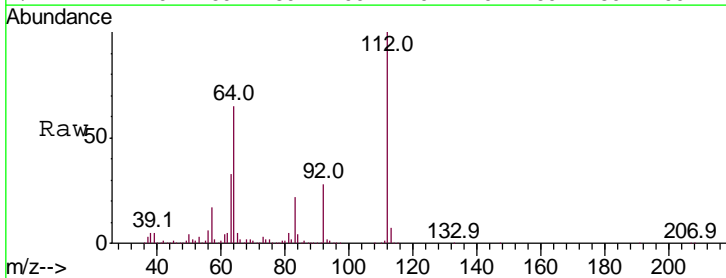
Instrument :
 BNA_M
 ClientSampled :
 WV-A

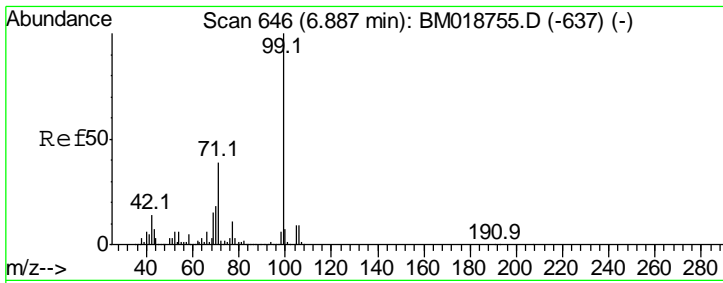
Tgt Ion	Resp	Lower	Upper
152	100		
150	155.0	127.3	190.9
115	64.1	50.8	76.2



#5
 2-Fluorophenol
 Concen: 102.069 ng
 RT: 5.29 min Scan# 374
 Delta R.T. -0.02 min
 Lab File: BM018935.D
 Acq: 26 Feb 2019 18:35

Tgt Ion	Resp	Lower	Upper
112	100		
64	64.8	50.6	75.8
63	33.1	25.7	38.5

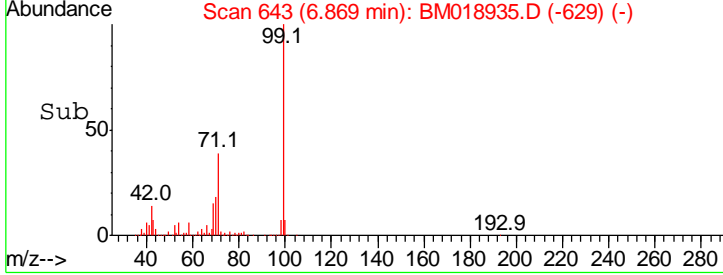
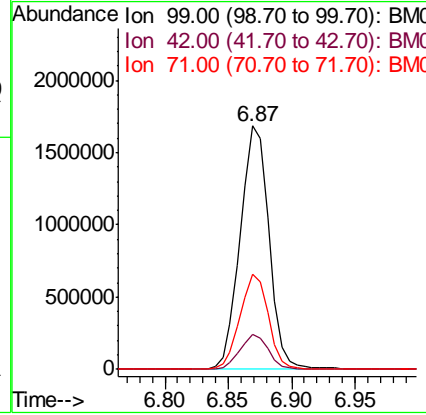
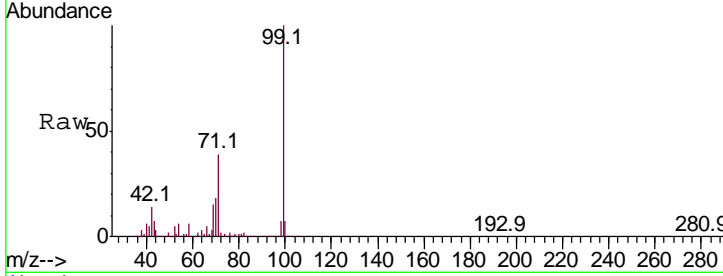




#7
 Phenol-d6
 Concen: 94.704 ng
 RT: 6.87 min Scan# 643
 Delta R.T. -0.02 min
 Lab File: BM018935.D
 Acq: 26 Feb 2019 18:35

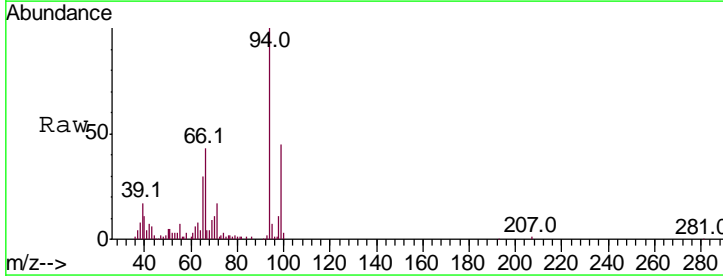
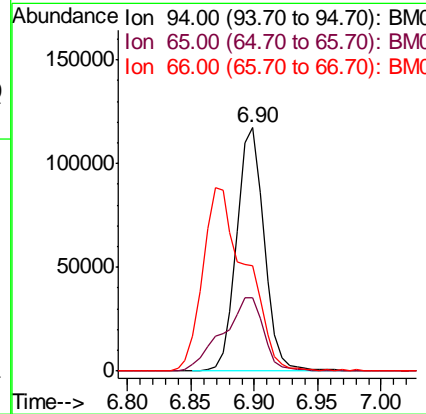
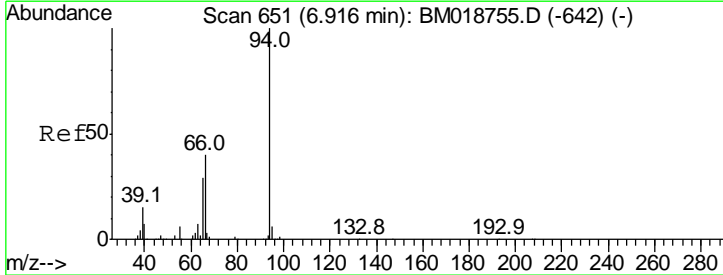
Instrument :
 BNA_M
ClientSampled :
 WV-A

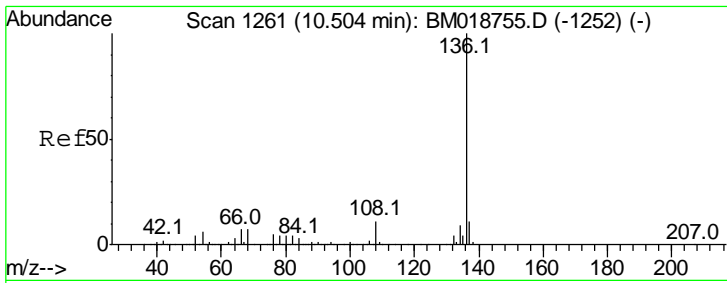
Tgt Ion	Resp	Lower	Upper
99	100		
42	14.2	11.0	16.6
71	39.1	31.3	46.9



#10
 Phenol
 Concen: 5.970 ng
 RT: 6.90 min Scan# 648
 Delta R.T. -0.02 min
 Lab File: BM018935.D
 Acq: 26 Feb 2019 18:35

Tgt Ion	Resp	Lower	Upper
94	100		
65	30.4	9.6	49.6
66	43.1	20.4	60.4



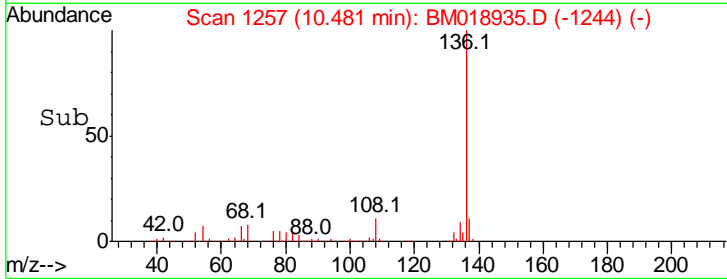
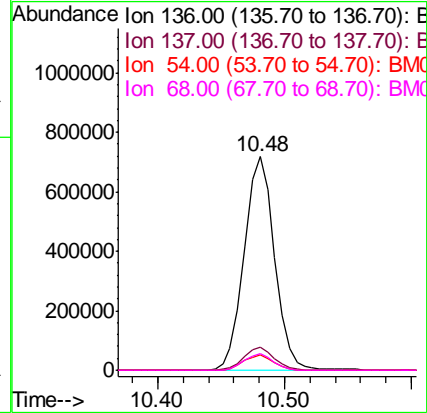
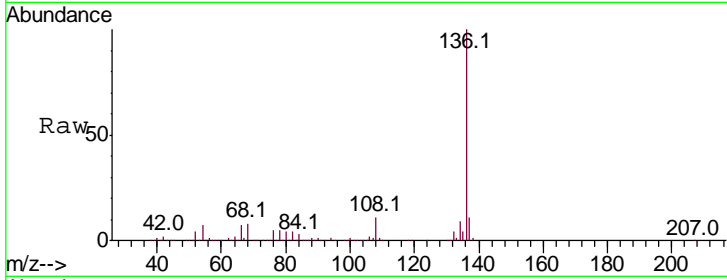


#21
 Naphthalene-d8
 Concen: 20.000 ng
 RT: 10.48 min Scan# 1257
 Delta R.T. -0.02 min
 Lab File: BM018935.D
 Acq: 26 Feb 2019 18:35

Instrument :
 BNA_M
 ClientSampled :
 WV-A

Tgt Ion: 136 Resp: 1193501

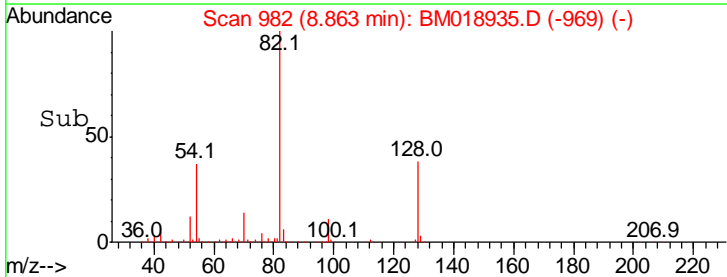
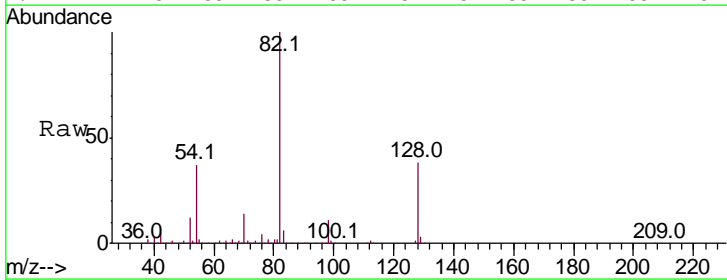
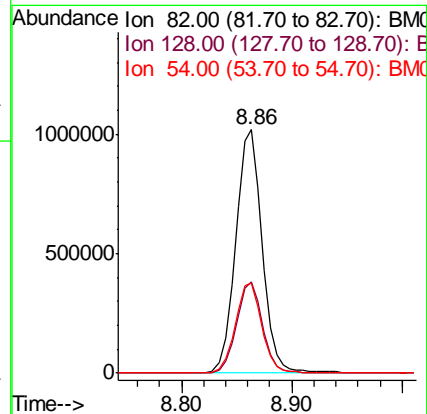
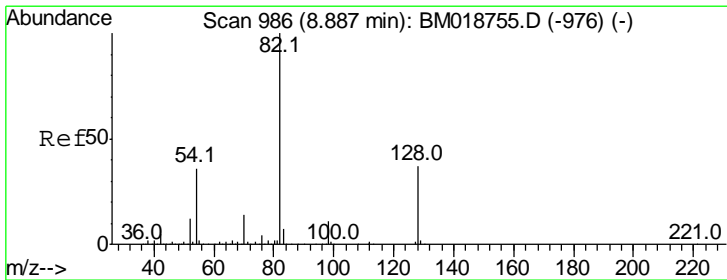
Ion	Ratio	Lower	Upper
136	100		
137	10.8	8.8	13.2
54	7.0	5.0	7.6
68	7.7	5.5	8.3

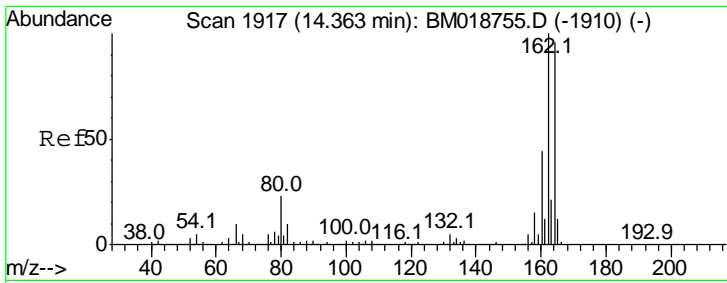


#23
 Nitrobenzene-d5
 Concen: 66.222 ng
 RT: 8.86 min Scan# 982
 Delta R.T. -0.02 min
 Lab File: BM018935.D
 Acq: 26 Feb 2019 18:35

Tgt Ion: 82 Resp: 1709312

Ion	Ratio	Lower	Upper
82	100		
128	37.6	29.9	44.9
54	37.1	29.1	43.7

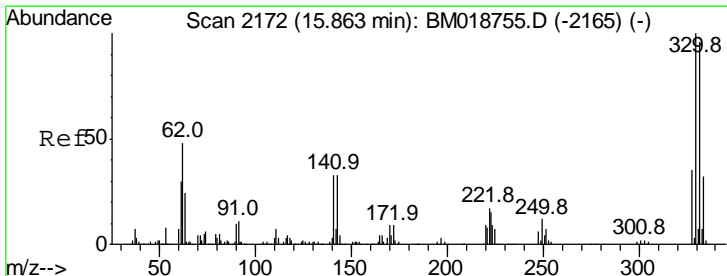
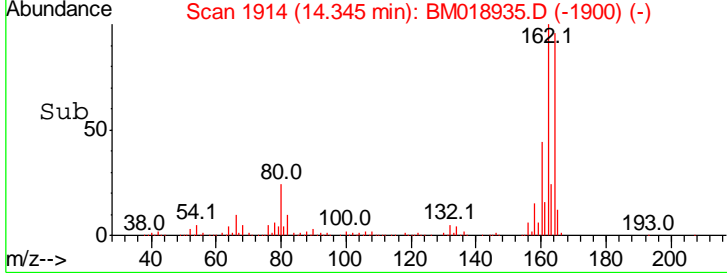
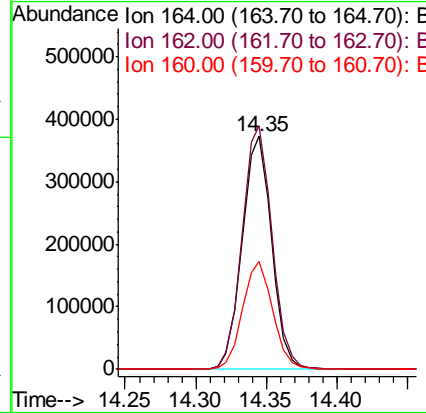
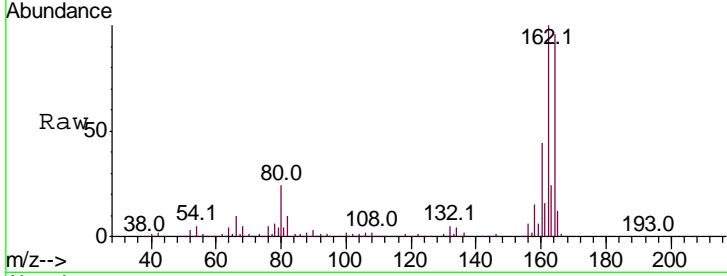




#39
 Acenaphthene-d10
 Concen: 20.000 ng
 RT: 14.35 min Scan# 1914
 Delta R.T. -0.02 min
 Lab File: BM018935.D
 Acq: 26 Feb 2019 18:35

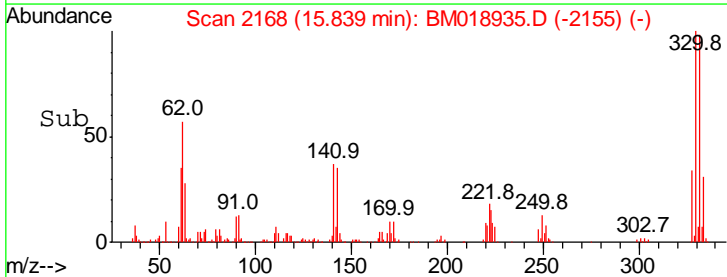
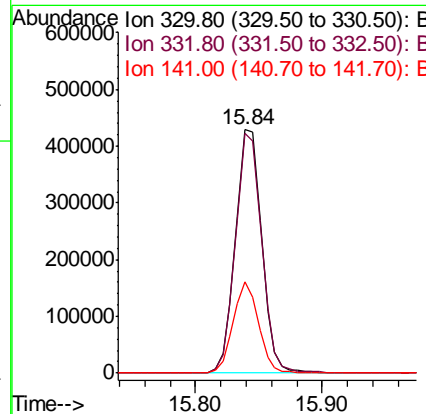
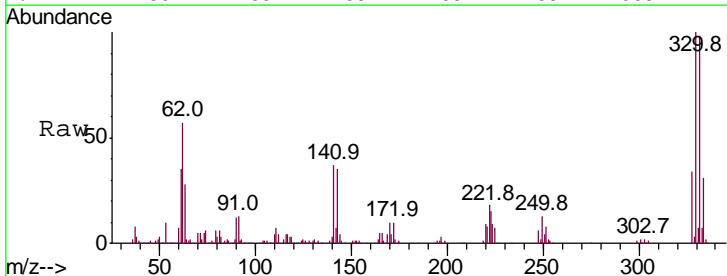
Instrument :
 BNA_M
 ClientSampled :
 WV-A

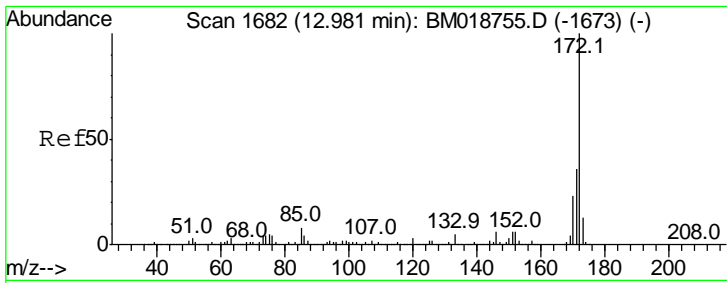
Tgt Ion	Resp	Lower	Upper
164	100		
162	104.5	83.4	125.0
160	46.4	36.6	55.0



#42
 2,4,6-Tribromophenol
 Concen: 78.687 ng
 RT: 15.84 min Scan# 2168
 Delta R.T. -0.02 min
 Lab File: BM018935.D
 Acq: 26 Feb 2019 18:35

Tgt Ion	Resp	Lower	Upper
330	100		
332	97.9	76.9	115.3
141	36.2	28.7	43.1



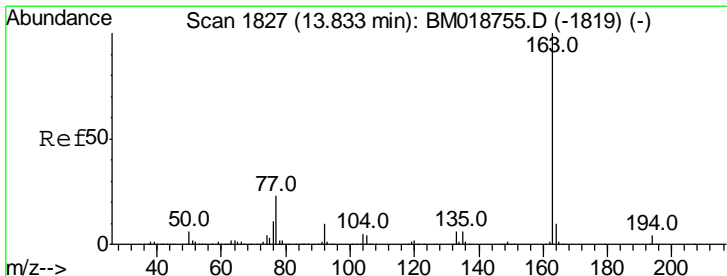
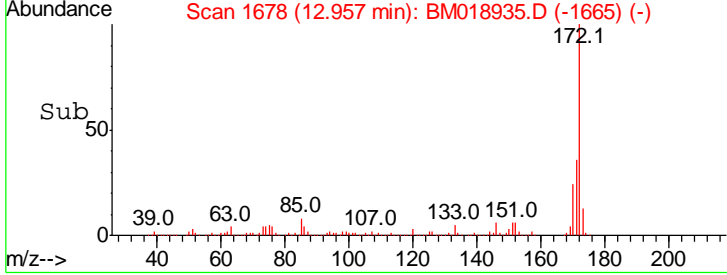
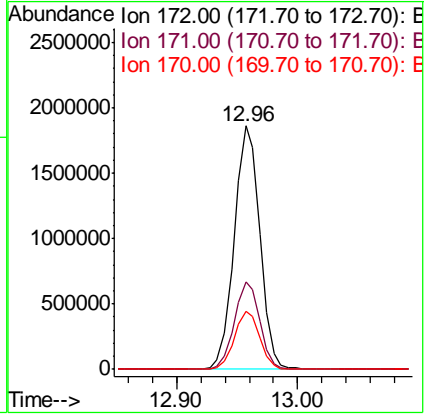
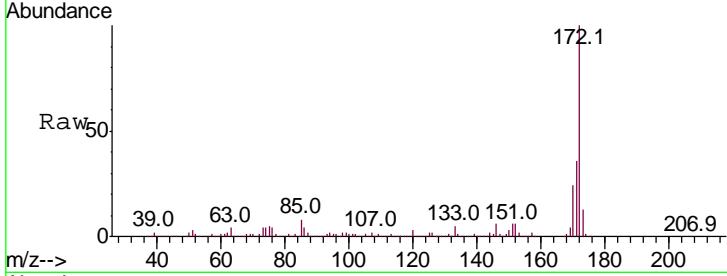


#45
 2-Fluorobiphenyl
 Concen: 67.267 ng
 RT: 12.96 min Scan# 1678
 Delta R.T. -0.02 min
 Lab File: BM018935.D
 Acq: 26 Feb 2019 18:35

Instrument :
 BNA_M
 ClientSampled :
 WV-A

Tgt Ion:172 Resp: 2752225

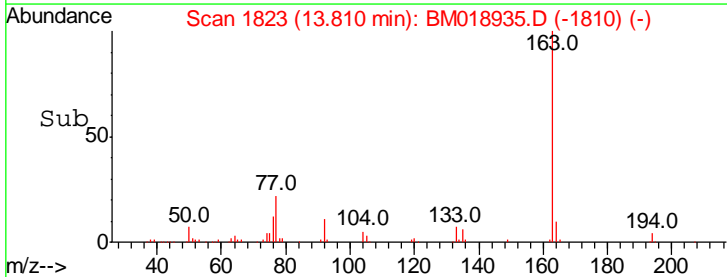
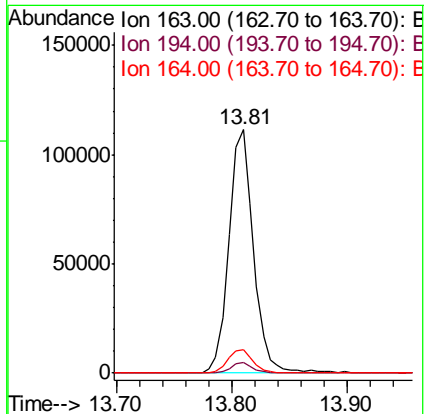
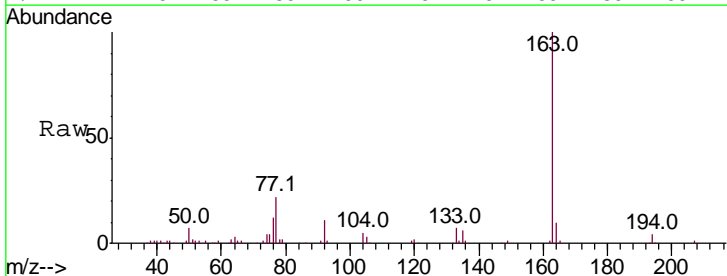
Ion	Ratio	Lower	Upper
172	100		
171	36.1	29.0	43.6
170	23.7	18.6	28.0

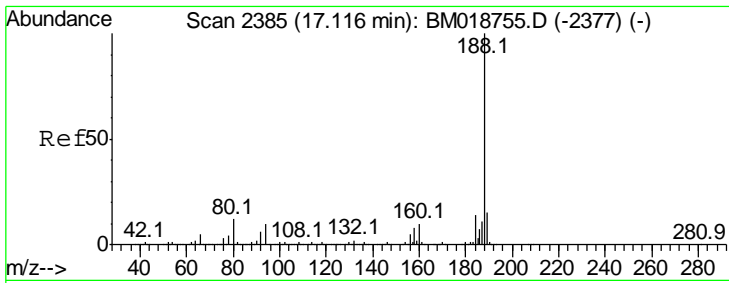


#50
 Dimethylphthalate
 Concen: 3.632 ng
 RT: 13.81 min Scan# 1823
 Delta R.T. -0.02 min
 Lab File: BM018935.D
 Acq: 26 Feb 2019 18:35

Tgt Ion:163 Resp: 164382

Ion	Ratio	Lower	Upper
163	100		
194	4.5	3.2	4.8
164	9.6	7.8	11.8

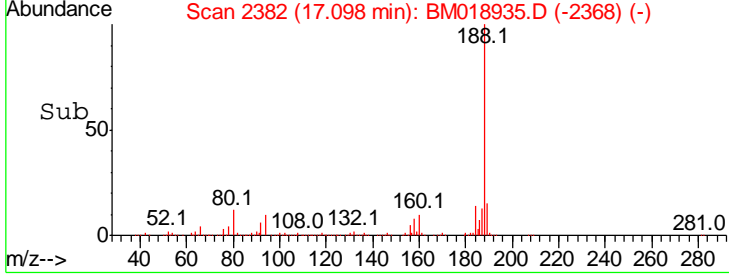
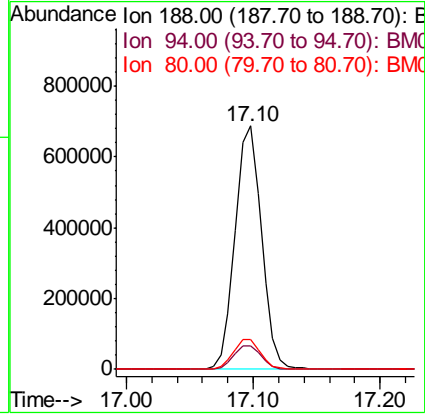
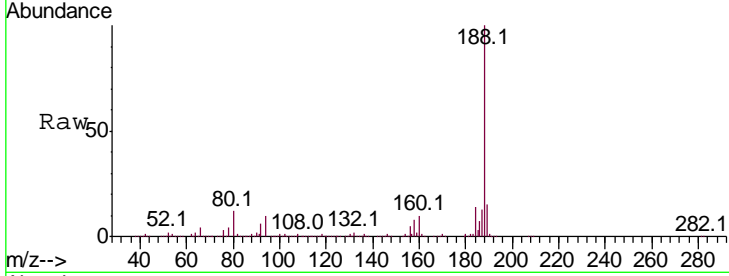




#64
 Phenanthrene-d10
 Concen: 20.000 ng
 RT: 17.10 min Scan# 2382
 Delta R.T. -0.02 min
 Lab File: BM018935.D
 Acq: 26 Feb 2019 18:35

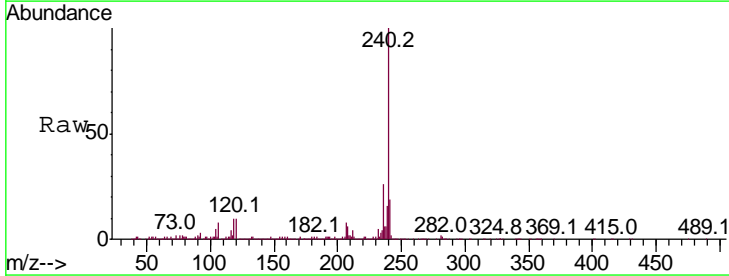
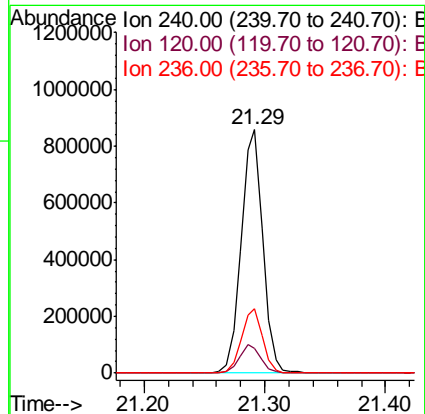
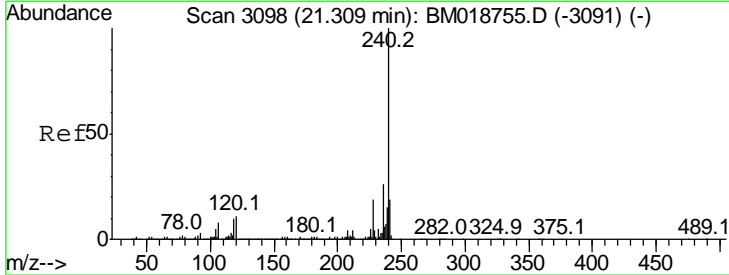
Instrument :
 BNA_M
 ClientSampled :
 WV-A

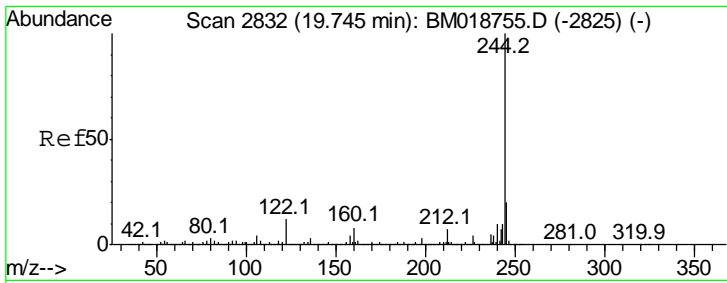
Tgt Ion	Resp	Lower	Upper
188	100		
94	9.9	8.2	12.2
80	12.0	9.7	14.5



#76
 Chrysene-d12
 Concen: 20.000 ng
 RT: 21.29 min Scan# 3095
 Delta R.T. -0.02 min
 Lab File: BM018935.D
 Acq: 26 Feb 2019 18:35

Tgt Ion	Resp	Lower	Upper
240	100		
120	10.2	8.9	13.3
236	26.3	20.9	31.3



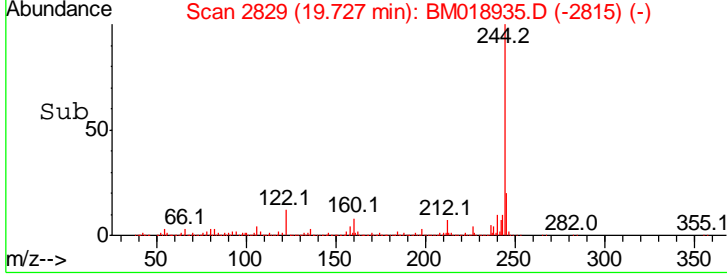
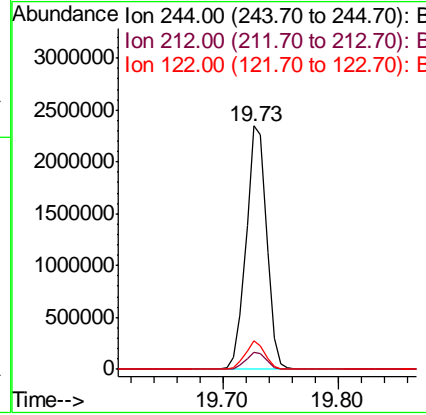
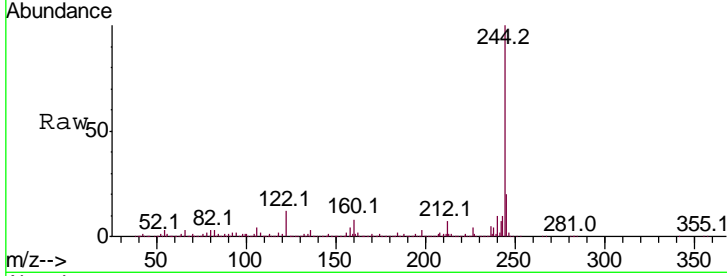


#79
 Terphenyl-d14
 Concen: 55.459 ng
 RT: 19.73 min Scan# 2829
 Delta R.T. -0.02 min
 Lab File: BM018935.D
 Acq: 26 Feb 2019 18:35

Instrument :
 BNA_M
 ClientSampled :
 WV-A

Tgt Ion: 244 Resp: 2881241

Ion	Ratio	Lower	Upper
244	100		
212	7.1	5.6	8.4
122	11.5	9.3	13.9



#87
 Perylene-d12
 Concen: 20.000 ng
 RT: 23.54 min Scan# 3478
 Delta R.T. -0.02 min
 Lab File: BM018935.D
 Acq: 26 Feb 2019 18:35

Tgt Ion: 264 Resp: 1223004

Ion	Ratio	Lower	Upper
264	100		
260	23.4	18.9	28.3
265	21.7	17.3	25.9

