

Data File : BM025175.D
Acq On : 29 Feb 2020 19:17
Operator : CG/JU
Sample : L1542-14
Misc :
ALS Vial : 48 Sample Multiplier: 1

Instrument :
BNA_M
ClientSampleId :
DBD50

Quant Time: Mar 02 02:10:53 2020
Quant Method : Z:\SVOASRV\HPCHEM1\BNA_M\METHODS\SOM-EPA-SIM-BM022420.M
Quant Title : ASP BNA STANDARDS FOR 5 POINT CALIBRATION
QLast Update : Mon Mar 02 02:08:15 2020
Response via : Initial Calibration

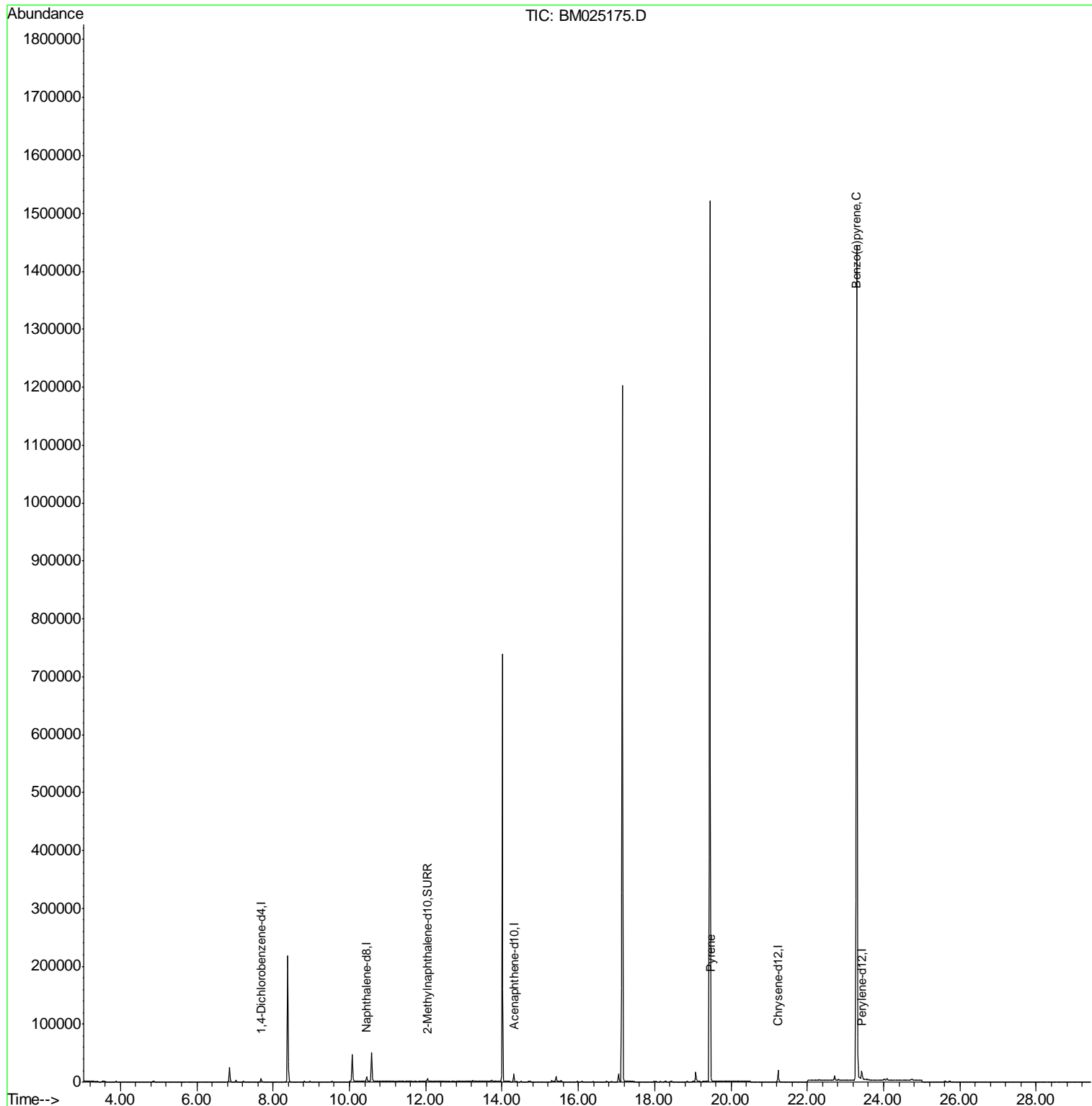
Internal Standards	R.T.	QIon	Response	Conc	Units	Dev(Min)
1) 1,4-Dichlorobenzene-d4	7.68	152	2984	0.40	ng/ul	0.00
2) Naphthalene-d8	10.45	136	11544	0.40	ng/ul	0.00
6) Acenaphthene-d10	14.31	164	7450	0.40	ng/ul	0.00
10) Phenanthrene-d10	0.00	188	0	0.00	ng/ul	-17.05
16) Chrysene-d12	21.24	240	17552	0.40	ng/ul	0.00
20) Perylene-d12	23.43	264	19777	0.40	ng/ul	0.00
System Monitoring Compounds						
4) 2-Methylnaphthalene-d10	12.05	152	6817	0.31	ng/ul	0.00
14) Fluoranthene-d10	19.08	212	17948	0.00	ng/ul	0.00
Target Compounds						
17) Pyrene	19.47	202	3524	0.045	ng/ul#	93
23) Benzo(a)pyrene	23.30	252	5865	0.083	ng/ul#	79

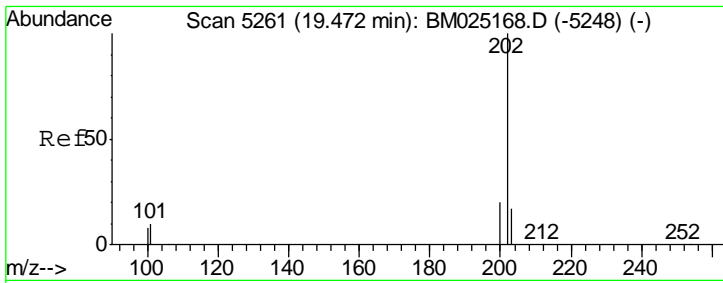
(#) = qualifier out of range (m) = manual integration (+) = signals summed

Data File : BM025175.D
Acq On : 29 Feb 2020 19:17
Operator : CG/JU
Sample : L1542-14
Misc :
ALS Vial : 48 Sample Multiplier: 1

Instrument :
BNA_M
ClientSampleId :
DBD50

Quant Time: Mar 02 02:10:53 2020
Quant Method : Z:\SVOASRV\HPCHEM1\BNA_M\METHODS\SOM-EPA-SIM-BM022420.M
Quant Title : ASP BNA STANDARDS FOR 5 POINT CALIBRATION
QLast Update : Mon Mar 02 02:08:15 2020
Response via : Initial Calibration

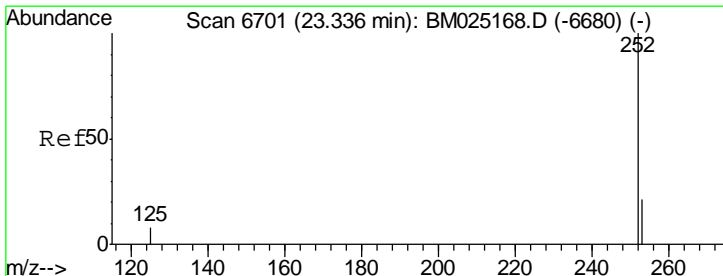
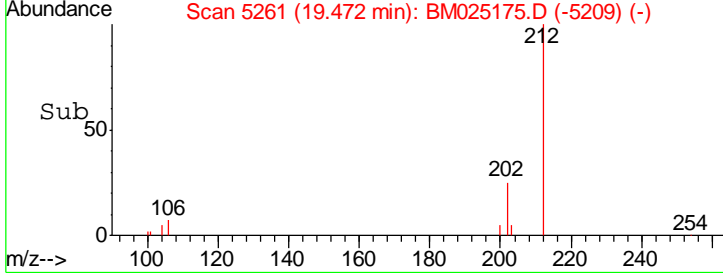
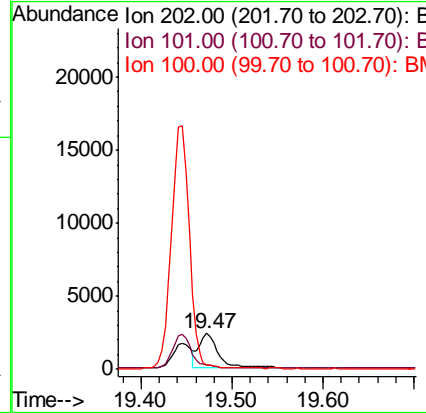
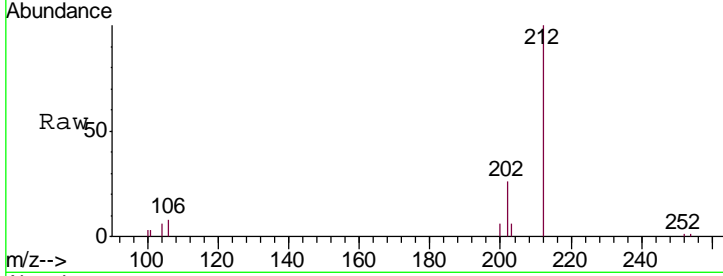




#17
 Pyrene
 Concen: 0.045 ng/ul
 RT: 19.47 min Scan# 5261
 Delta R.T. -0.00 min
 Lab File: BM025175.D
 Acq: 29 Feb 2020 19:17

Instrument :
 BNA_M
 ClientSampled :
 DBD50

Tgt Ion	Resp	Lower	Upper
202	100		
101	12.9	8.7	13.1
100	12.3	7.3	10.9#



#23
 Benzo(a)pyrene
 Concen: 0.083 ng/ul
 RT: 23.30 min Scan# 6685
 Delta R.T. -0.04 min
 Lab File: BM025175.D
 Acq: 29 Feb 2020 19:17

Tgt Ion	Resp	Lower	Upper
252	100		
253	35.1	20.3	30.5#
125	26.8	13.0	19.4#

