

Data Path : Z:\SVOASRV\HPCHEM1\BNA M\DATA\BM030119\  
 Data File : BM018995.D  
 Acq On : 01 Mar 2019 20:08  
 Operator : JU/SJ  
 Sample : K1665-07  
 Misc :  
 ALS Vial : 12 Sample Multiplier: 1

Instrument :  
 BNA\_M  
 ClientSampleId :  
 200031

Integration Parameters: rteint.p  
 Integrator: RTE  
 Smoothing : ON  
 Sampling : 1  
 Start Thrs: 0.2  
 Stop Thrs : 0  
 Filtering: 5  
 Min Area: 3 % of largest Peak  
 Max Peaks: 100  
 Peak Location: TOP

If leading or trailing edge < 100 prefer < Baseline drop else tangent >  
 Peak separation: 5

Method : Z:\SVOASRV\HPCHEM1\BNA M\METHODS\8270-BM021119.M  
 Title : ASP BNA STANDARDS FOR 5 POINT CALIBRATION

Signal : TIC

peak #	R.T. min	first scan	max scan	last scan	PK TY	peak height	corr. area	corr. % max.	% of total
1	5.281	366	373	386	rBV	6378039	9101413	54.22%	8.462%
2	6.863	634	642	657	rBV	6401064	10294447	61.33%	9.571%
3	7.216	694	702	717	rBV	6514852	10355316	61.69%	9.628%
4	7.681	775	781	788	rBV	1122646	1744880	10.40%	1.622%
5	7.998	828	835	852	rVB	4430964	6954516	41.43%	6.466%
6	8.851	972	980	998	rBV	3674036	6013628	35.83%	5.591%
7	10.469	1246	1255	1269	rBV	1389304	2405721	14.33%	2.237%
8	12.951	1669	1677	1692	rBV	9223028	13565019	80.82%	12.612%
9	13.798	1811	1821	1835	rBV	484048	722327	4.30%	0.672%
10	14.333	1898	1912	1922	rBV2	2071885	3230861	19.25%	3.004%
11	15.833	2160	2167	2187	rBV	7906312	11010014	65.59%	10.236%
12	17.086	2374	2380	2385	rBV2	2512507	3649809	21.74%	3.393%
13	17.127	2385	2387	2395	rVB	169644	233877	1.39%	0.217%
14	17.974	2525	2531	2536	rBV	445154	653519	3.89%	0.608%
15	19.151	2726	2731	2740	rVB	581184	787288	4.69%	0.732%
16	19.262	2745	2750	2759	rBV	140268	247721	1.48%	0.230%
17	19.486	2783	2788	2790	rBV3	141102	207816	1.24%	0.193%
18	19.515	2790	2793	2802	rVB	467629	721847	4.30%	0.671%
19	19.721	2821	2828	2834	rBV	13337407	16785144	100.00%	15.605%
20	20.015	2874	2878	2884	rVB3	147758	209485	1.25%	0.195%
21	20.980	3038	3042	3052	rVB4	480509	674594	4.02%	0.627%
22	21.280	3087	3093	3098	rBV	2907256	3992004	23.78%	3.711%
23	21.315	3098	3099	3105	rVB	280585	294013	1.75%	0.273%
24	21.421	3114	3117	3123	rBV2	127421	192901	1.15%	0.179%
25	22.309	3265	3268	3277	rBV2	180134	245377	1.46%	0.228%
26	22.815	3351	3354	3357	rBV	179344	243190	1.45%	0.226%
27	23.527	3469	3475	3483	rBV	1632486	3022907	18.01%	2.810%

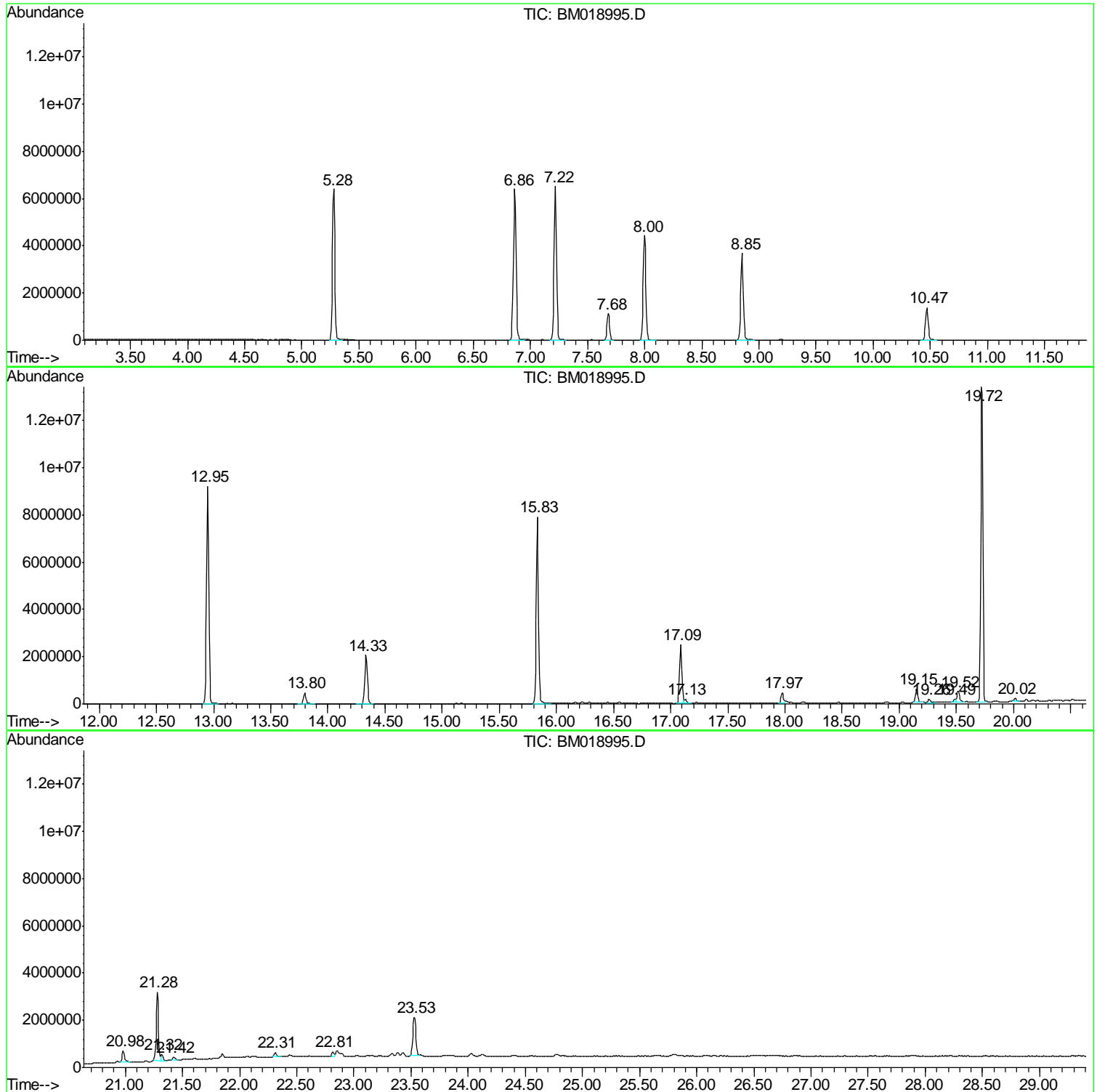
Sum of corrected areas: 107559634

Data Path : Z:\SVOASRV\HPCHEM1\BNA M\DATA\BM030119\  
Data File : BM018995.D  
Acq On : 01 Mar 2019 20:08  
Operator : JU/SJ  
Sample : K1665-07  
Misc :  
ALS Vial : 12 Sample Multiplier: 1

Instrument :  
BNA\_M  
ClientSampled :  
200031

Quant Method : Z:\SVOASRV\HPCHEM1\BNA M\METHODS\8270-BM021119.M  
Quant Title : ASP BNA STANDARDS FOR 5 POINT CALIBRATION

TIC Library : C:\DATABASE\NIST02.L  
TIC Integration Parameters: LSCINT.P



Data Path : Z:\SVOASRV\HPCHEM1\BNA M\DATA\BM030119\  
 Data File : BM018995.D  
 Acq On : 01 Mar 2019 20:08  
 Operator : JU/SJ  
 Sample : K1665-07  
 Misc :  
 ALS Vial : 12 Sample Multiplier: 1

Instrument :  
 BNA\_M  
 ClientSampleId :  
 200031

Quant Method : Z:\SVOASRV\HPCHEM1\BNA M\METHODS\8270-BM021119.M  
 Quant Title : ASP BNA STANDARDS FOR 5 POINT CALIBRATION

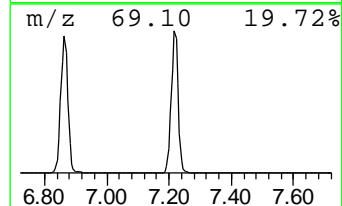
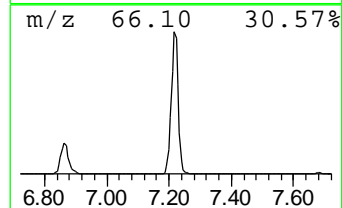
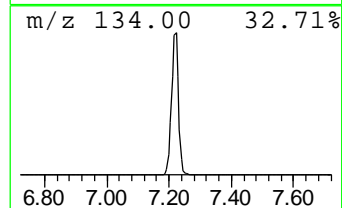
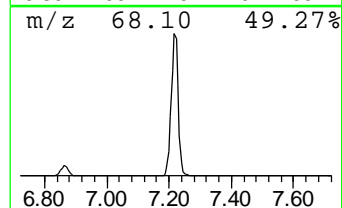
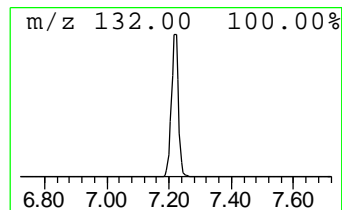
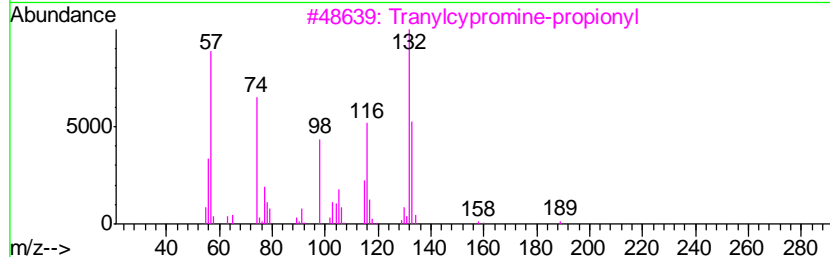
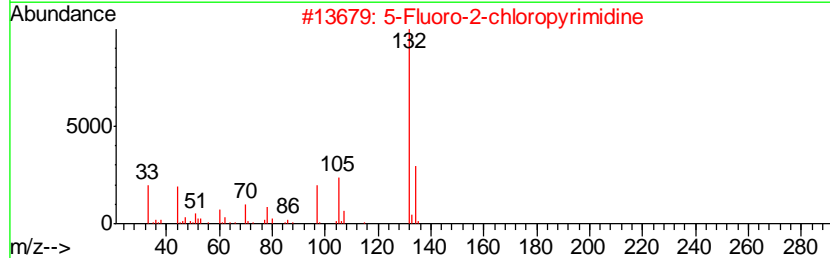
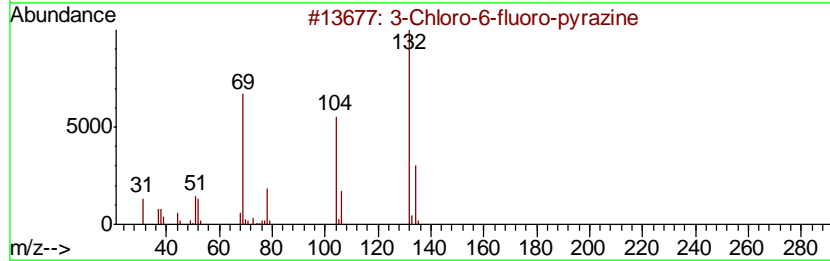
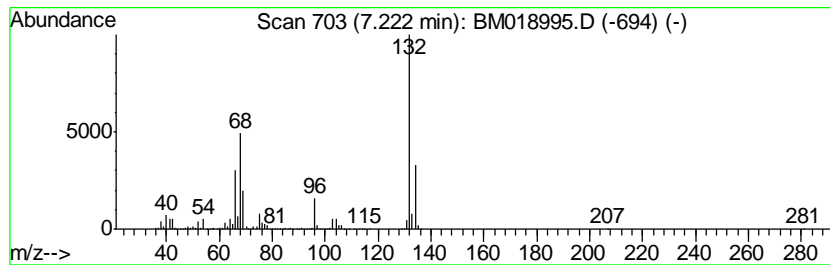
TIC Library : C:\DATABASE\NIST02.L  
 TIC Integration Parameters: LSCINT.P

\*\*\*\*\*  
 Peak Number 1 unknown7.22 Concentration Rank 1

R.T.	EstConc	Area	Relative to ISTD	R.T.
7.22	118.69 ng	10355300	1,4-Dichlorobenzene-d4	7.68

Hit#	of	Tentative ID	MW	MolForm	CAS#	Qual
1	5	3-Chloro-6-fluoro-pyrazine	132	C4H2ClFN2	1000146-10-7	16
2		5-Fluoro-2-chloropyrimidine	132	C4H2ClFN2	062802-42-0	12
3		Tranlycypromine-propionyl	189	C12H15NO	1000123-86-3	10
4		Xenon	132	Xe	007440-63-3	9
5		4-Methylpyrrolo[1,2-a]pyrazine	132	C8H8N2	064608-60-2	9



Data Path : Z:\SVOASRV\HPCHEM1\BNA M\DATA\BM030119\  
 Data File : BM018995.D  
 Acq On : 01 Mar 2019 20:08  
 Operator : JU/SJ  
 Sample : K1665-07  
 Misc :  
 ALS Vial : 12 Sample Multiplier: 1

Instrument :  
 BNA\_M  
 ClientSampled :  
 200031

Quant Method : Z:\SVOASRV\HPCHEM1\BNA M\METHODS\8270-BM021119.M  
 Quant Title : ASP BNA STANDARDS FOR 5 POINT CALIBRATION

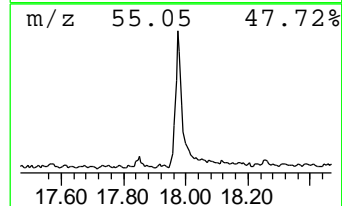
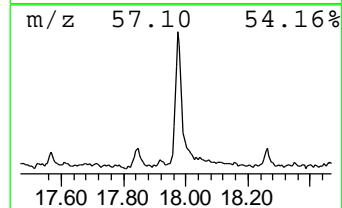
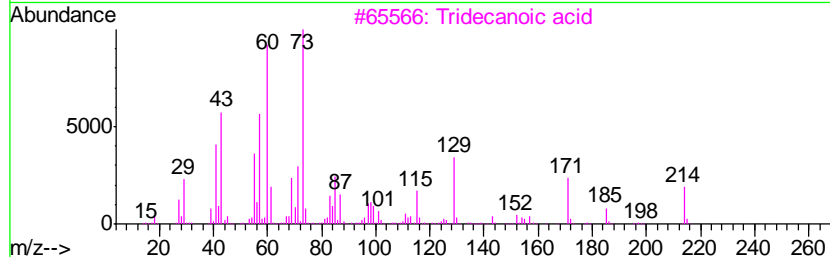
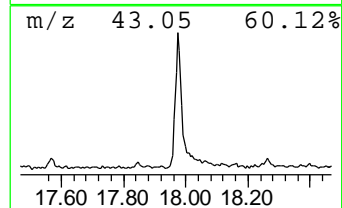
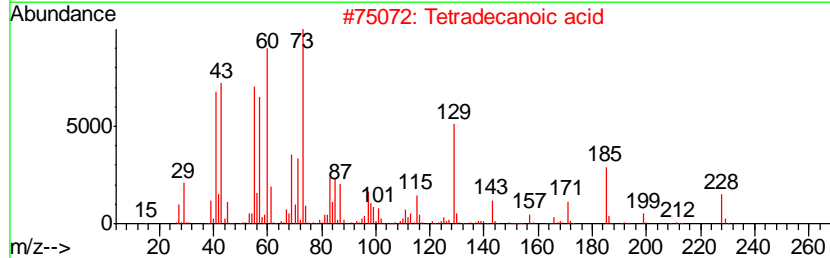
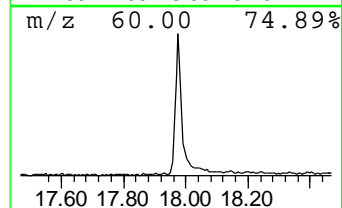
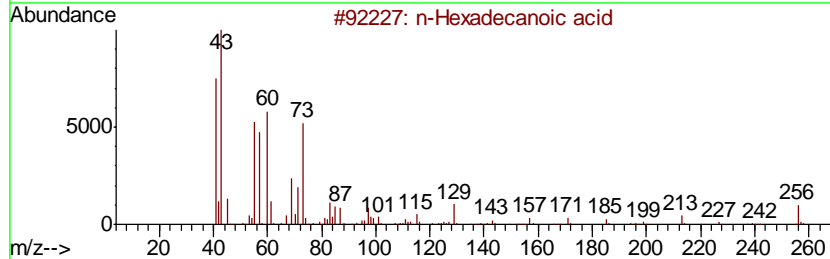
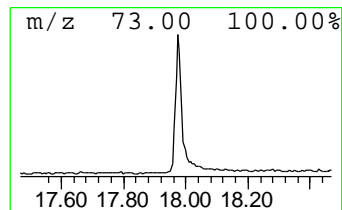
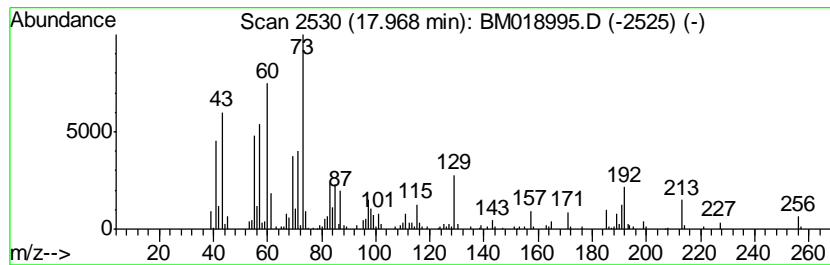
TIC Library : C:\DATABASE\NIST02.L  
 TIC Integration Parameters: LSCINT.P

\*\*\*\*\*  
 Peak Number 3 n-Hexadecanoic acid Concentration Rank 3

R.T.	EstConc	Area	Relative to ISTD	R.T.
17.97	3.58 ng	653519	Phenanthrene-d10	17.09

Hit#	of	Tentative ID	MW	MolForm	CAS#	Qual
1	5	n-Hexadecanoic acid	256	C16H32O2	000057-10-3	97
2		Tetradecanoic acid	228	C14H28O2	000544-63-8	80
3		Tridecanoic acid	214	C13H26O2	000638-53-9	72
4		Pentadecanoic acid	242	C15H30O2	001002-84-2	59
5		n-Decanoic acid	172	C10H20O2	000334-48-5	47



Data Path : Z:\SVOASRV\HPCHEM1\BNA M\DATA\BM030119\  
 Data File : BM018995.D  
 Acq On : 01 Mar 2019 20:08  
 Operator : JU/SJ  
 Sample : K1665-07  
 Misc :  
 ALS Vial : 12 Sample Multiplier: 1

Instrument :  
 BNA\_M  
 ClientSampleID :  
 200031

Quant Method : Z:\SVOASRV\HPCHEM1\BNA M\METHODS\8270-BM021119.M  
 Quant Title : ASP BNA STANDARDS FOR 5 POINT CALIBRATION

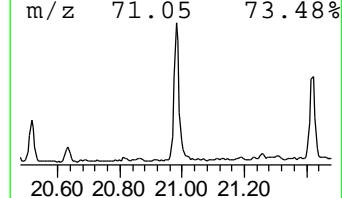
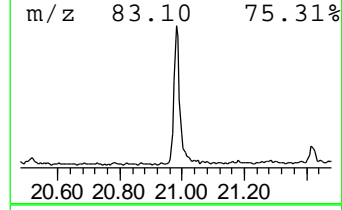
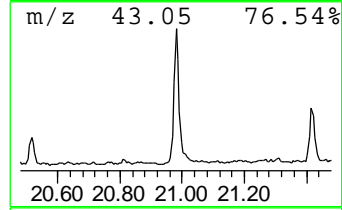
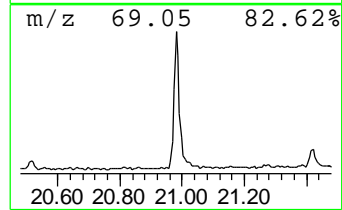
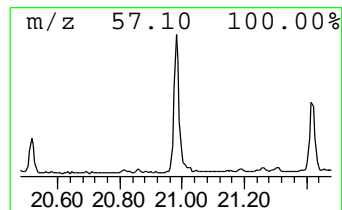
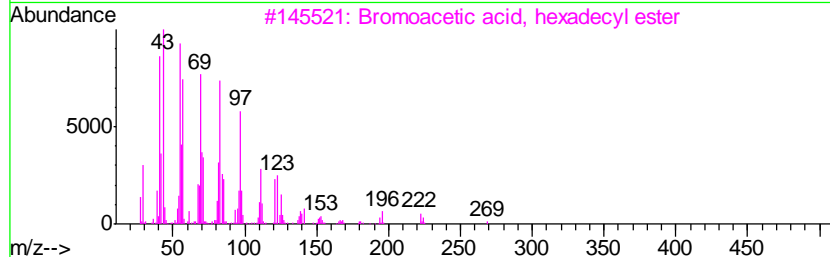
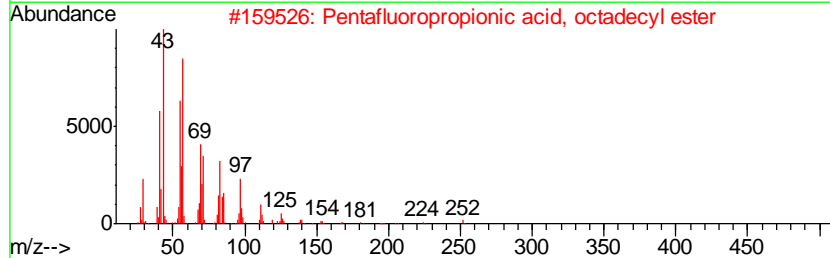
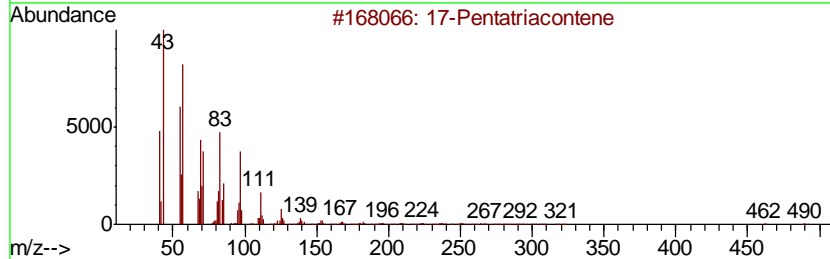
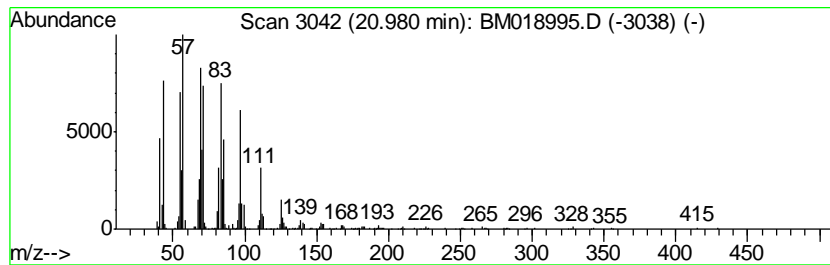
TIC Library : C:\DATABASE\NIST02.L  
 TIC Integration Parameters: LSCINT.P

\*\*\*\*\*  
 Peak Number 4 17-Pentatriacontene Concentration Rank 4

R.T.	EstConc	Area	Relative to ISTD	R.T.
20.98	3.38 ng	674594	Chrysene-d12	21.28

Hit#	of	Tentative ID	MW	MolForm	CAS#	Qual
1	5	17-Pentatriacontene	491	C35H70	006971-40-0	91
2		Pentafluoropropionic acid, octad...	416	C21H37F5O2	1000280-07-7	91
3		Bromoacetic acid, hexadecyl ester	362	C18H35BrO2	005454-48-8	76
4		1-Hexadecanol	242	C16H34O	036653-82-4	68
5		3-Eicosene, (E)-	280	C20H40	074685-33-9	68



Data Path : Z:\SVOASRV\HPCHEM1\BNA\_M\DATA\BM030119\  
Data File : BM018995.D  
Acq On : 01 Mar 2019 20:08  
Operator : JU/SJ  
Sample : K1665-07  
Misc :  
ALS Vial : 12 Sample Multiplier: 1

Instrument :  
BNA\_M  
ClientSampleId :  
200031

Quant Method : Z:\SVOASRV\HPCHEM1\BNA\_M\METHODS\8270-BM021119.M  
Quant Title : ASP BNA STANDARDS FOR 5 POINT CALIBRATION

TIC Library : C:\DATABASE\NIST02.L  
TIC Integration Parameters: LSCINT.P

TIC Top Hit name	RT	EstConc	Units	Response	--Internal Standard--			
					#	RT	Resp	Conc
unknown7.22	7.22	118.7	ng	10355300	1	7.68	1744880	20.0
n-Hexadecanoic acid	17.97	3.6	ng	653519	4	17.09	3649810	20.0
17-Pentatriacontene	20.98	3.4	ng	674594	5	21.28	3992000	20.0