

Data Path : Z:\SVOASRV\HPCHEM1\BNA\_M\DATA\BM031519\  
 Data File : BM019208.D  
 Acq On : 16 Mar 2019 04:26  
 Operator : JU/SJ  
 Sample : K1905-04  
 Misc :  
 ALS Vial : 26 Sample Multiplier: 1

Instrument :  
 BNA\_M  
 ClientSampleId :  
 RBR-200052

Quant Time: Mar 16 06:30:39 2019  
 Quant Method : Z:\SVOASRV\HPCHEM1\BNA\_M\METHODS\8270-BM031119.M  
 Quant Title : ASP BNA STANDARDS FOR 5 POINT CALIBRATION  
 QLast Update : Mon Mar 11 17:30:46 2019  
 Response via : Initial Calibration

Internal Standards	R.T.	QIon	Response	Conc	Units	Dev(Min)
1) 1,4-Dichlorobenzene-d4	7.65	152	222463	20.00	ng	-0.01
21) Naphthalene-d8	10.43	136	939028	20.00	ng	-0.02
39) Acenaphthene-d10	14.30	164	610689	20.00	ng	-0.02
64) Phenanthrene-d10	17.06	188	1369822	20.00	ng	-0.01
76) Chrysene-d12	21.26	240	1092756	20.00	ng	-0.02
87) Perylene-d12	23.49	264	983089	20.00	ng	-0.02
System Monitoring Compounds						
5) 2-Fluorophenol	5.25	112	1795329	130.70	ng	0.00
7) Phenol-d6	6.83	99	2267900	112.87	ng	-0.01
23) Nitrobenzene-d5	8.82	82	1966182	98.98	ng	-0.01
42) 2,4,6-Tribromophenol	15.81	330	1383334	153.42	ng	-0.01
45) 2-Fluorobiphenyl	12.92	172	4412683	93.99	ng	-0.02
79) Terphenyl-d14	19.70	244	7290167	132.44	ng	0.00

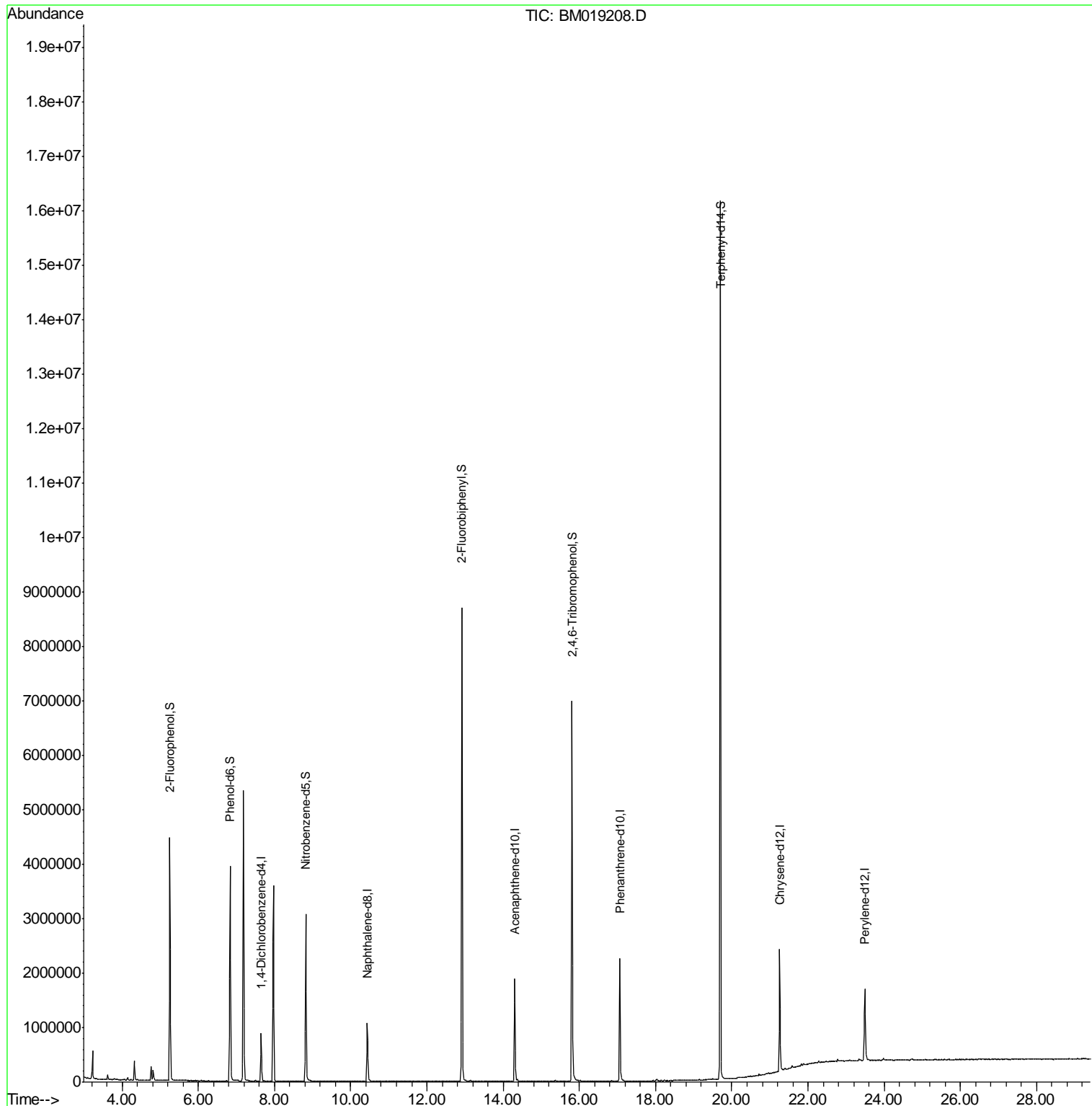
Target Compounds Qvalue

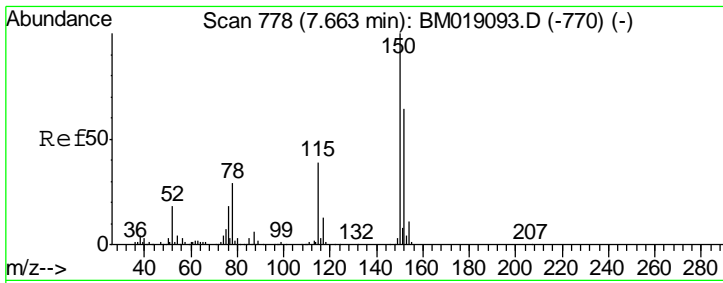
(#) = qualifier out of range (m) = manual integration (+) = signals summed

Data Path : Z:\SVOASRV\HPCHEM1\BNA\_M\DATA\BM031519\  
 Data File : BM019208.D  
 Acq On : 16 Mar 2019 04:26  
 Operator : JU/SJ  
 Sample : K1905-04  
 Misc :  
 ALS Vial : 26 Sample Multiplier: 1

Instrument :  
 BNA\_M  
 ClientSampleId :  
 RBR-200052

Quant Time: Mar 16 06:30:39 2019  
 Quant Method : Z:\SVOASRV\HPCHEM1\BNA\_M\METHODS\8270-BM031119.M  
 Quant Title : ASP BNA STANDARDS FOR 5 POINT CALIBRATION  
 QLast Update : Mon Mar 11 17:30:46 2019  
 Response via : Initial Calibration

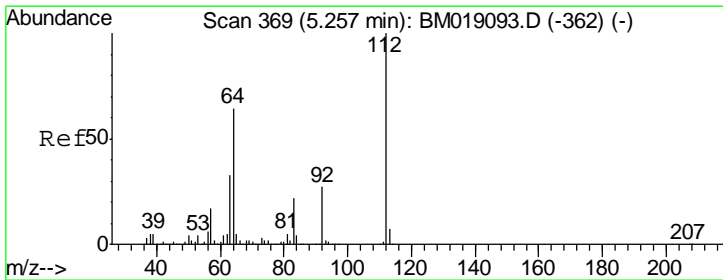
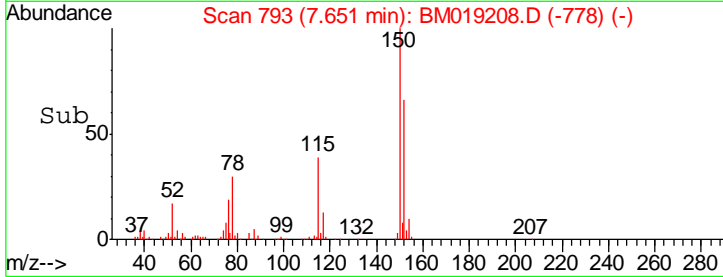
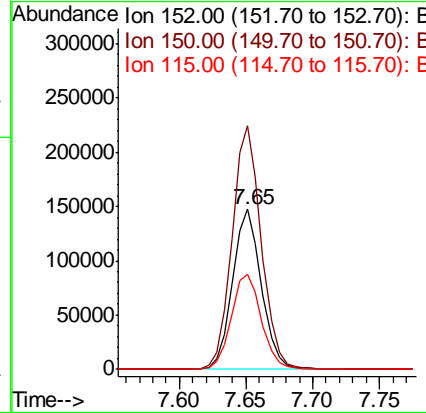
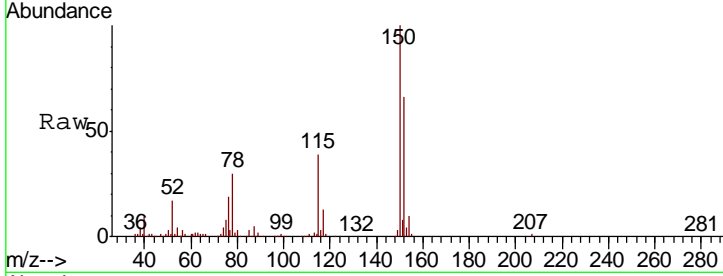




#1  
 1,4-Dichlorobenzene-d4  
 Concen: 20.000 ng  
 RT: 7.65 min Scan# 793  
 Delta R.T. -0.01 min  
 Lab File: BM019208.D  
 Acq: 16 Mar 2019 04:26

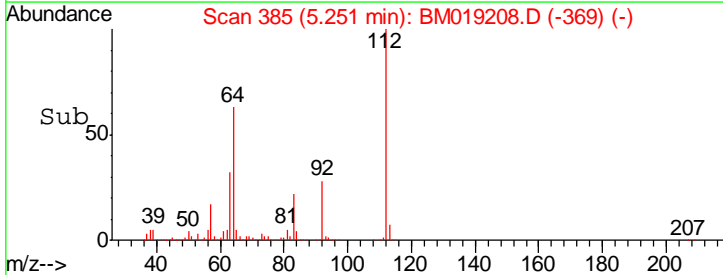
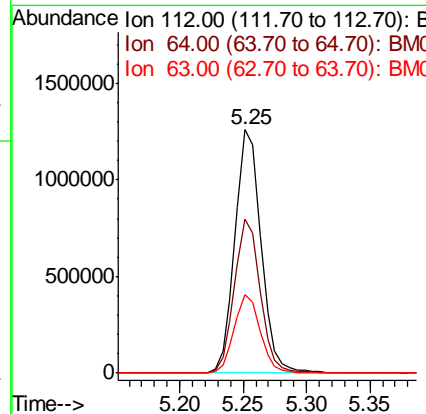
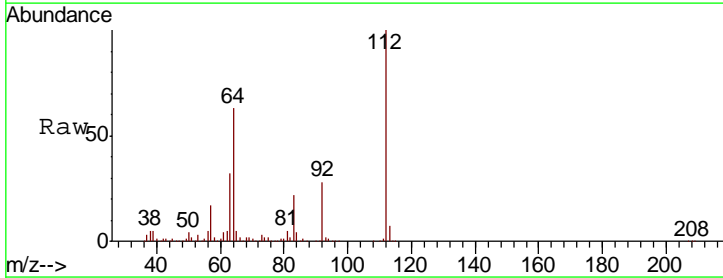
Instrument :  
 BNA\_M  
 ClientSampleId :  
 RBR-200052

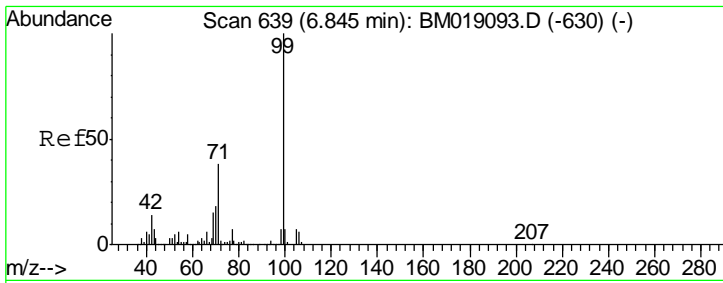
Tgt Ion	Resp	Lower	Upper
152	100		
150	152.0	125.3	187.9
115	59.2	49.4	74.0



#5  
 2-Fluorophenol  
 Concen: 130.696 ng  
 RT: 5.25 min Scan# 385  
 Delta R.T. -0.01 min  
 Lab File: BM019208.D  
 Acq: 16 Mar 2019 04:26

Tgt Ion	Resp	Lower	Upper
112	100		
64	63.1	51.4	77.0
63	32.0	26.6	40.0

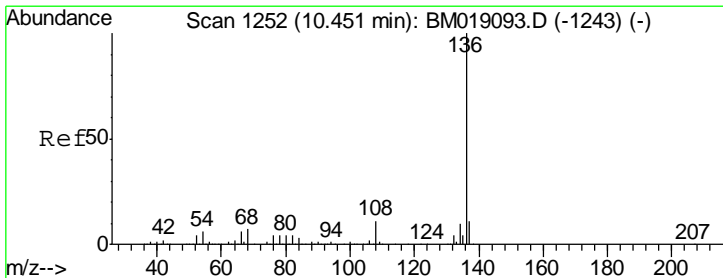
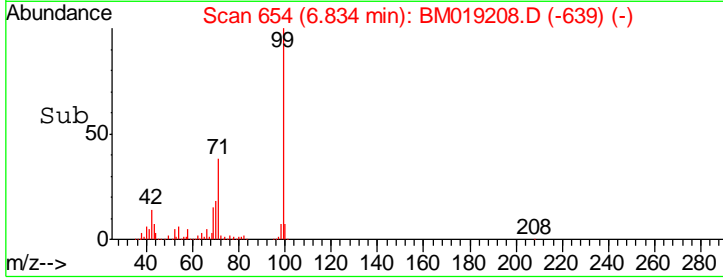
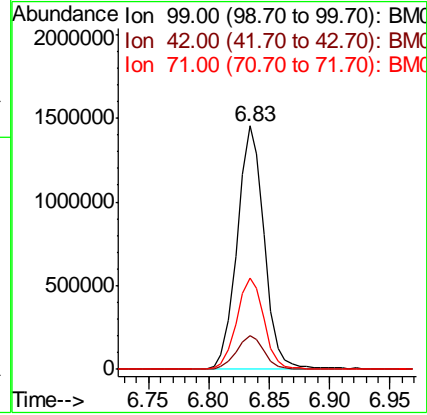
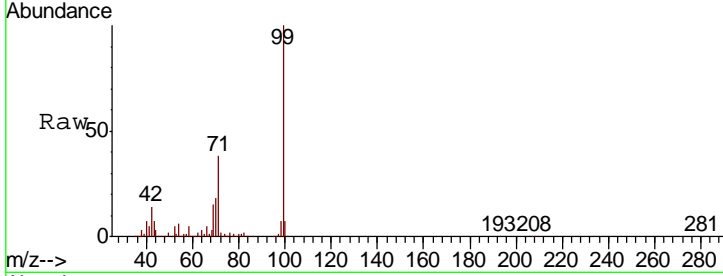




#7  
 Phenol-d6  
 Concen: 112.871 ng  
 RT: 6.83 min Scan# 654  
 Delta R.T. -0.01 min  
 Lab File: BM019208.D  
 Acq: 16 Mar 2019 04:26

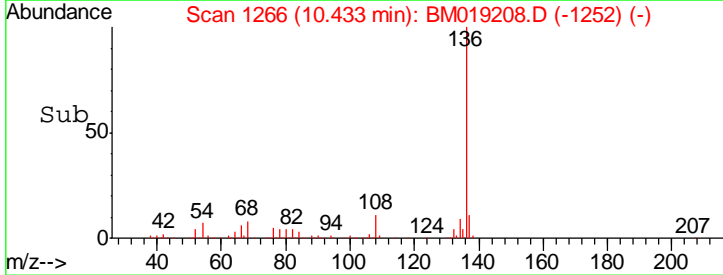
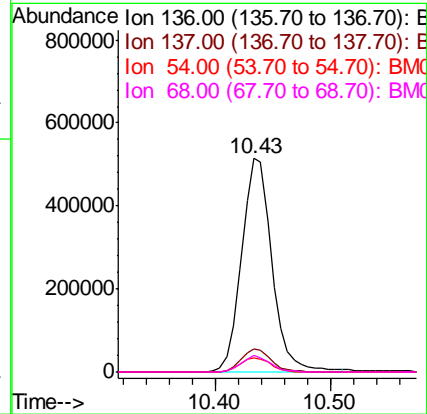
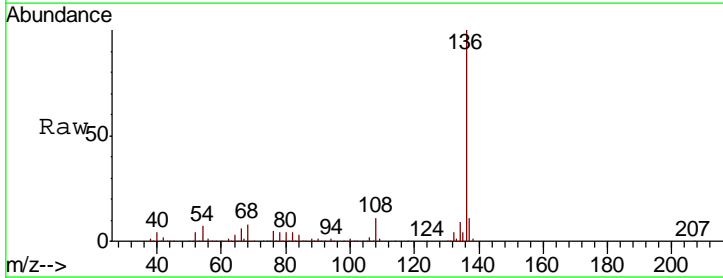
Instrument :  
 BNA\_M  
 ClientSampled :  
 RBR-200052

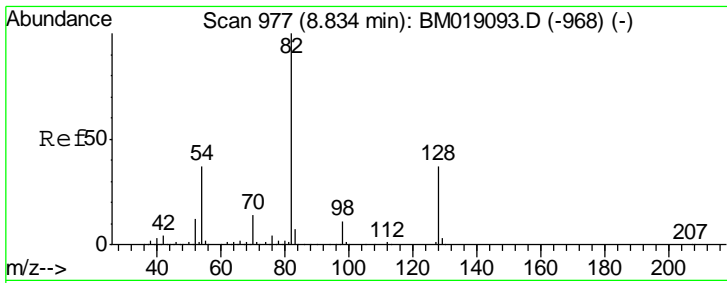
Tgt Ion	Resp	Lower	Upper
99	100		
42	14.1	10.9	16.3
71	37.7	30.3	45.5



#21  
 Naphthalene-d8  
 Concen: 20.000 ng  
 RT: 10.43 min Scan# 1266  
 Delta R.T. -0.02 min  
 Lab File: BM019208.D  
 Acq: 16 Mar 2019 04:26

Tgt Ion	Resp	Lower	Upper
136	100		
137	10.7	8.6	13.0
54	6.9	5.2	7.8
68	7.5	5.8	8.8

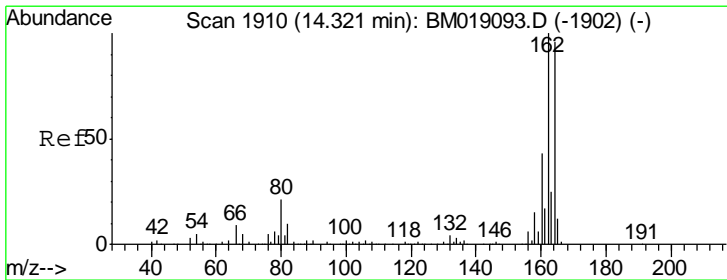
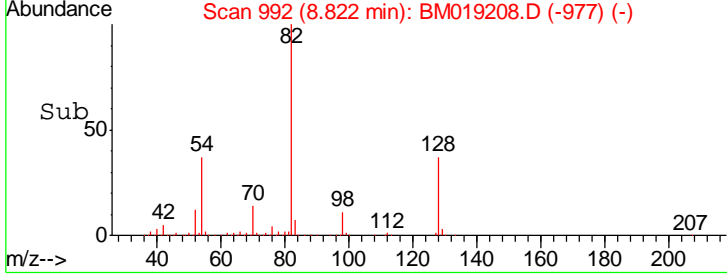
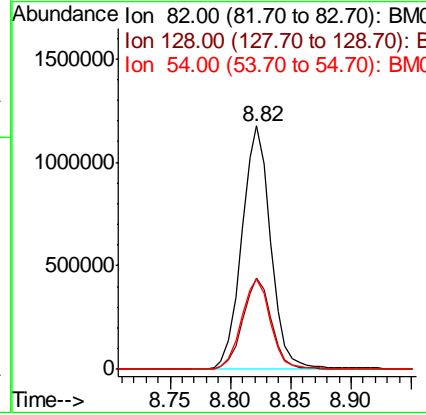
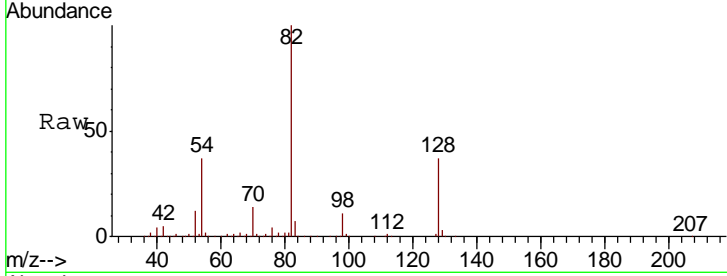




#23  
 Nitrobenzene-d5  
 Concen: 98.977 ng  
 RT: 8.82 min Scan# 992  
 Delta R.T. -0.01 min  
 Lab File: BM019208.D  
 Acq: 16 Mar 2019 04:26

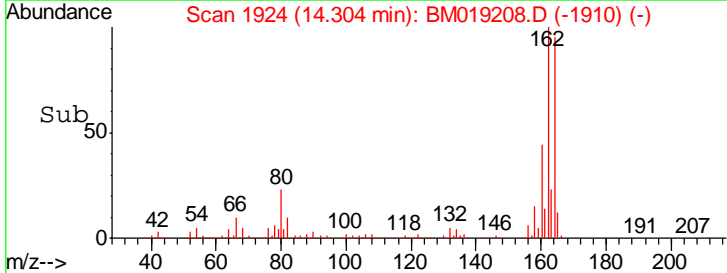
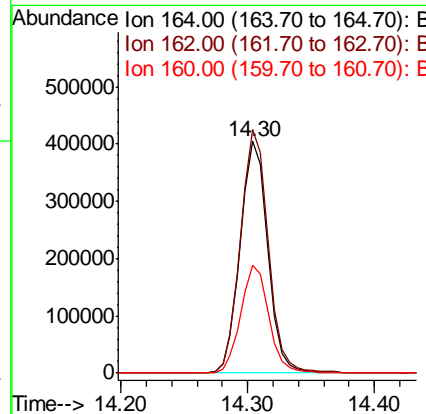
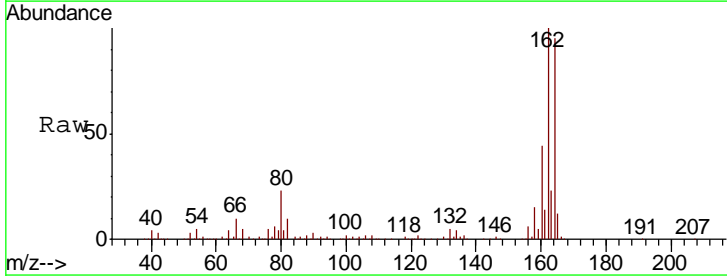
Instrument :  
 BNA\_M  
 ClientSampleID :  
 RBR-200052

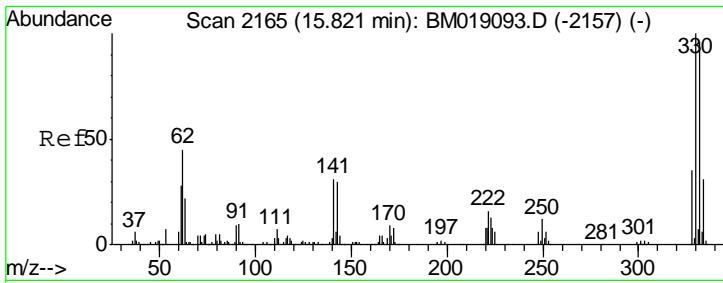
Tgt Ion	Resp	Lower	Upper
82	1966182		
128	37.3	29.4	44.2
54	37.0	29.9	44.9



#39  
 Acenaphthene-d10  
 Concen: 20.000 ng  
 RT: 14.30 min Scan# 1924  
 Delta R.T. -0.02 min  
 Lab File: BM019208.D  
 Acq: 16 Mar 2019 04:26

Tgt Ion	Resp	Lower	Upper
164	610689		
162	105.0	83.5	125.3
160	46.3	36.3	54.5

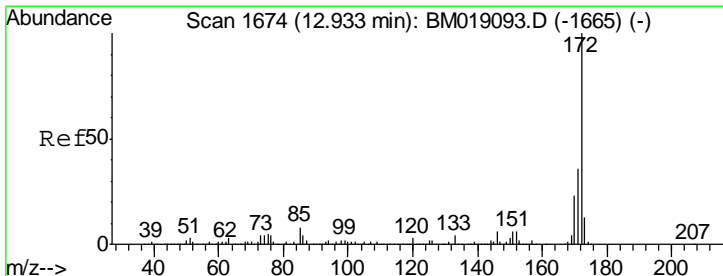
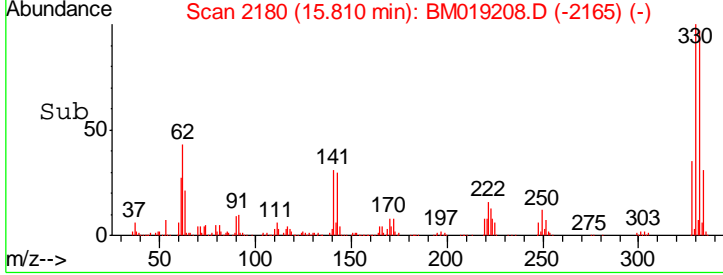
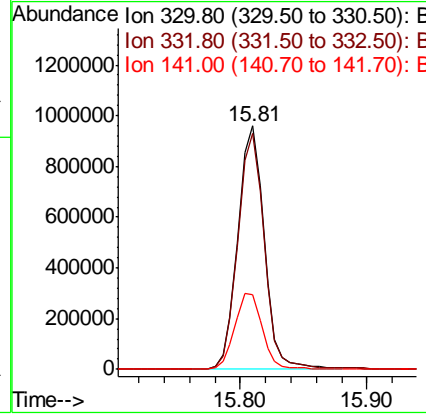
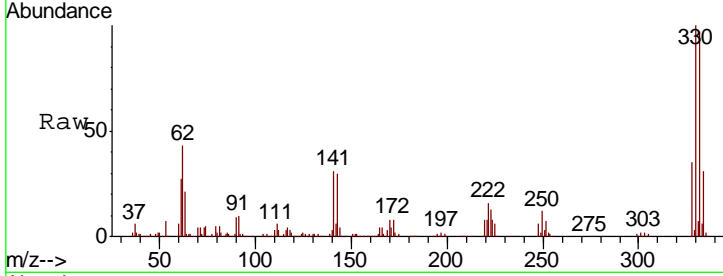




#42  
 2,4,6-Tribromophenol  
 Concen: 153.421 ng  
 RT: 15.81 min Scan# 2180  
 Delta R.T. -0.01 min  
 Lab File: BM019208.D  
 Acq: 16 Mar 2019 04:26

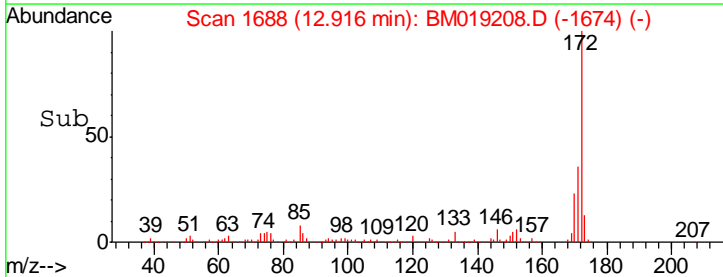
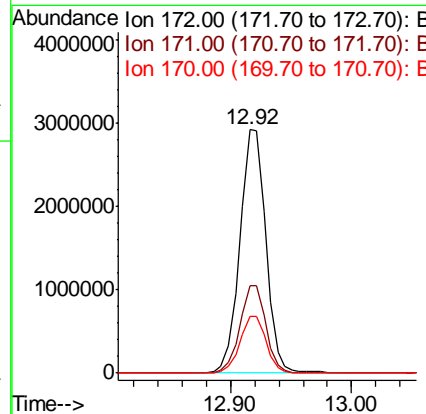
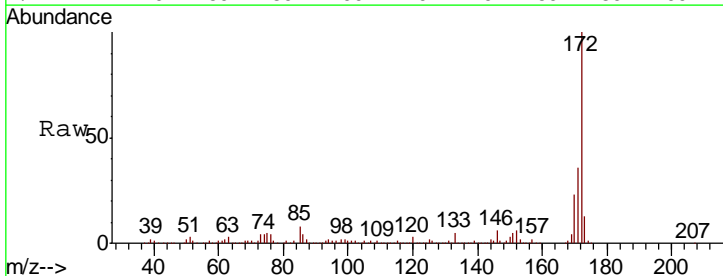
Instrument :  
 BNA\_M  
 ClientSampled :  
 RBR-200052

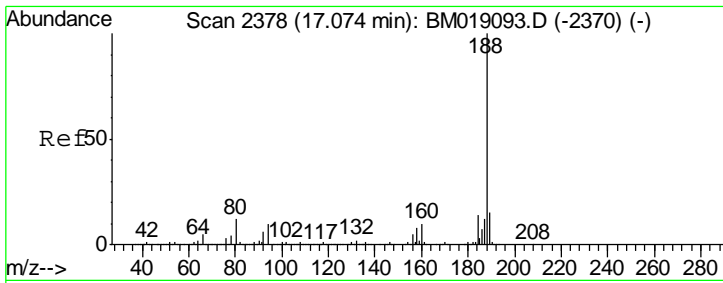
Tgt Ion	Resp	Lower	Upper
330	1383334		
332	96.9	76.8	115.2
141	33.0	27.0	40.4



#45  
 2-Fluorobiphenyl  
 Concen: 93.990 ng  
 RT: 12.92 min Scan# 1688  
 Delta R.T. -0.02 min  
 Lab File: BM019208.D  
 Acq: 16 Mar 2019 04:26

Tgt Ion	Resp	Lower	Upper
172	4412683		
171	35.9	28.6	42.8
170	23.3	18.6	28.0



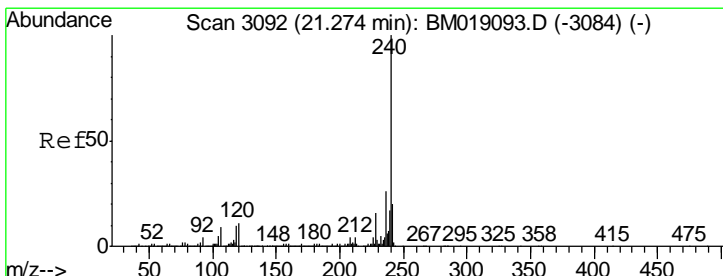
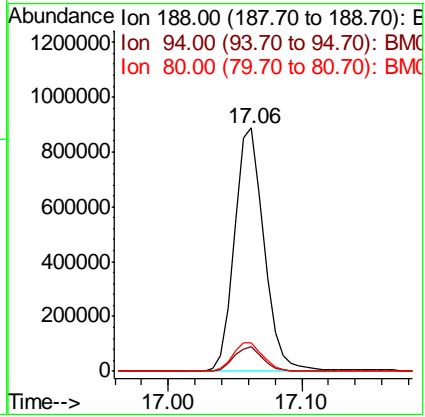
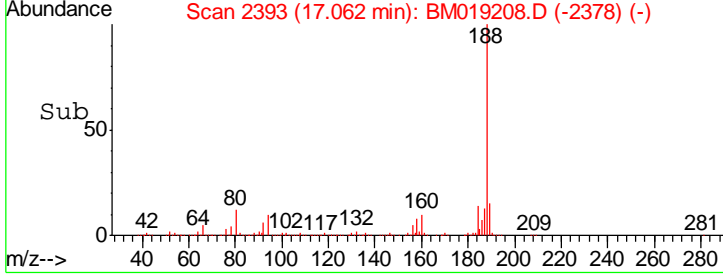
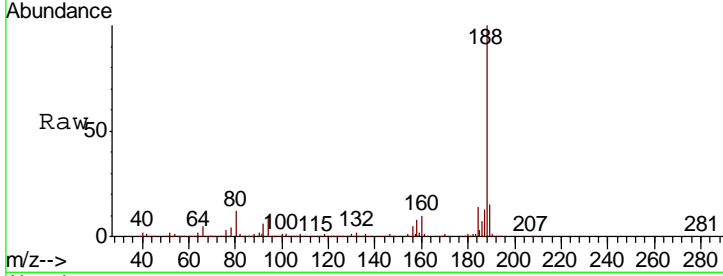


#64  
 Phenanthrene-d10  
 Concen: 20.000 ng  
 RT: 17.06 min Scan# 2393  
 Delta R.T. -0.01 min  
 Lab File: BM019208.D  
 Acq: 16 Mar 2019 04:26

Instrument :  
 BNA\_M  
 ClientSampleId :  
 RBR-200052

Tgt Ion:188 Resp: 1369822

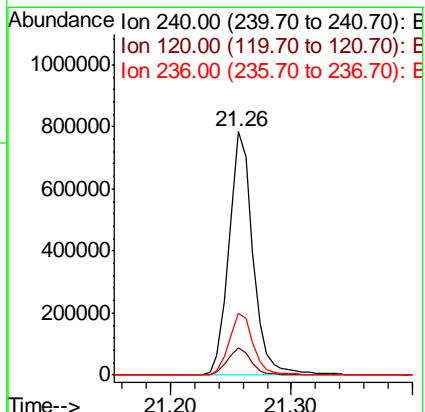
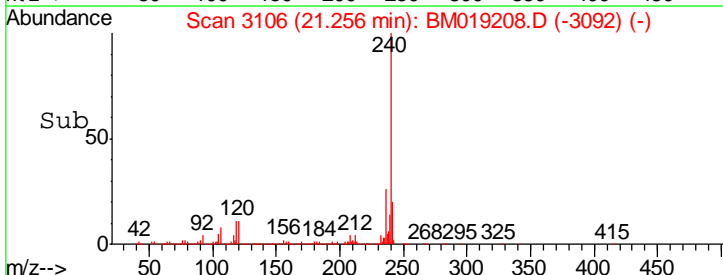
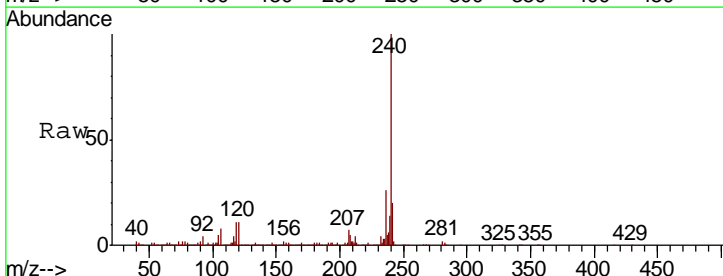
Ion	Ratio	Lower	Upper
188	100		
94	10.0	8.1	12.1
80	11.8	9.7	14.5

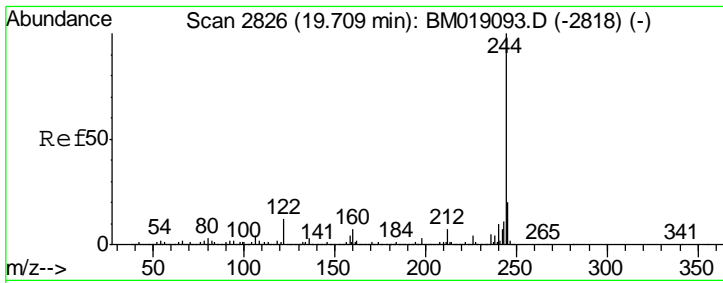


#76  
 Chrysene-d12  
 Concen: 20.000 ng  
 RT: 21.26 min Scan# 3106  
 Delta R.T. -0.02 min  
 Lab File: BM019208.D  
 Acq: 16 Mar 2019 04:26

Tgt Ion:240 Resp: 1092756

Ion	Ratio	Lower	Upper
240	100		
120	11.3	8.9	13.3
236	25.5	21.0	31.4

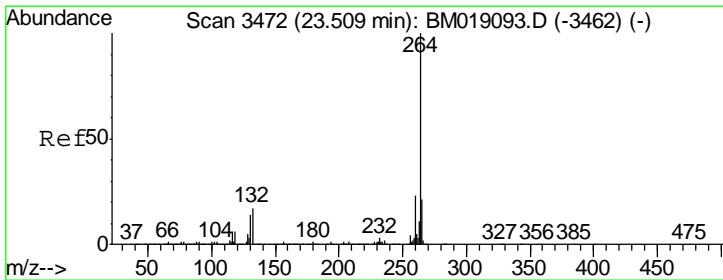
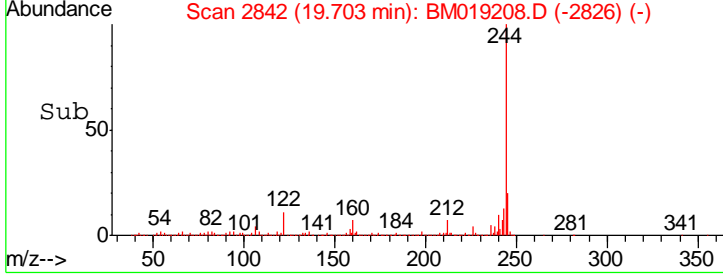
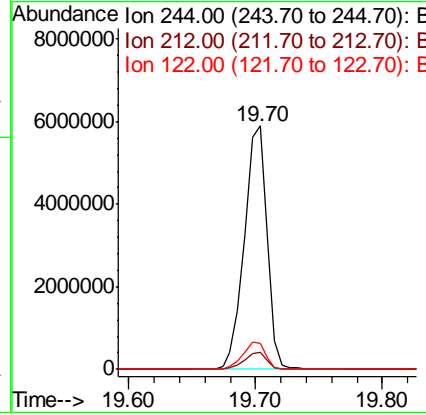
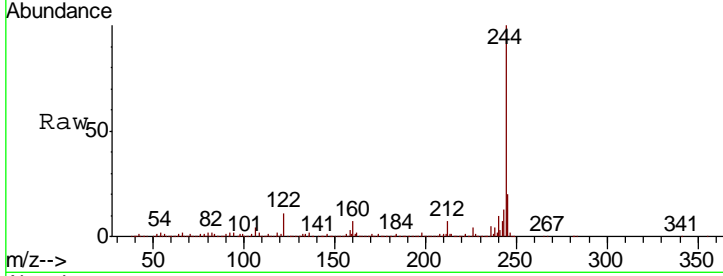




#79  
 Terphenyl-d14  
 Concen: 132.441 ng  
 RT: 19.70 min Scan# 2842  
 Delta R.T. -0.01 min  
 Lab File: BM019208.D  
 Acq: 16 Mar 2019 04:26

**Instrument :**  
 BNA\_M  
**ClientSampled :**  
 RBR-200052

Tgt Ion	Resp	Lower	Upper
244	100		
212	6.8	5.4	8.2
122	10.6	9.4	14.2



#87  
 Perylene-d12  
 Concen: 20.000 ng  
 RT: 23.49 min Scan# 3486  
 Delta R.T. -0.02 min  
 Lab File: BM019208.D  
 Acq: 16 Mar 2019 04:26

Tgt Ion	Resp	Lower	Upper
264	100		
260	23.4	18.6	28.0
265	21.8	17.3	25.9

