

Data Path : Z:\SVOASRV\HPCHEM1\BNA M\DATA\BM031519\
 Data File : BM019191.D
 Acq On : 15 Mar 2019 18:03
 Operator : JU/SJ
 Sample : K1908-05
 Misc :
 ALS Vial : 12 Sample Multiplier: 1

Instrument :
 BNA_M
 ClientSampleId :
 93-94

Quant Time: Mar 16 01:35:19 2019
 Quant Method : Z:\SVOASRV\HPCHEM1\BNA M\METHODS\8270-BM031119.M
 Quant Title : ASP BNA STANDARDS FOR 5 POINT CALIBRATION
 QLast Update : Mon Mar 11 17:30:46 2019
 Response via : Initial Calibration

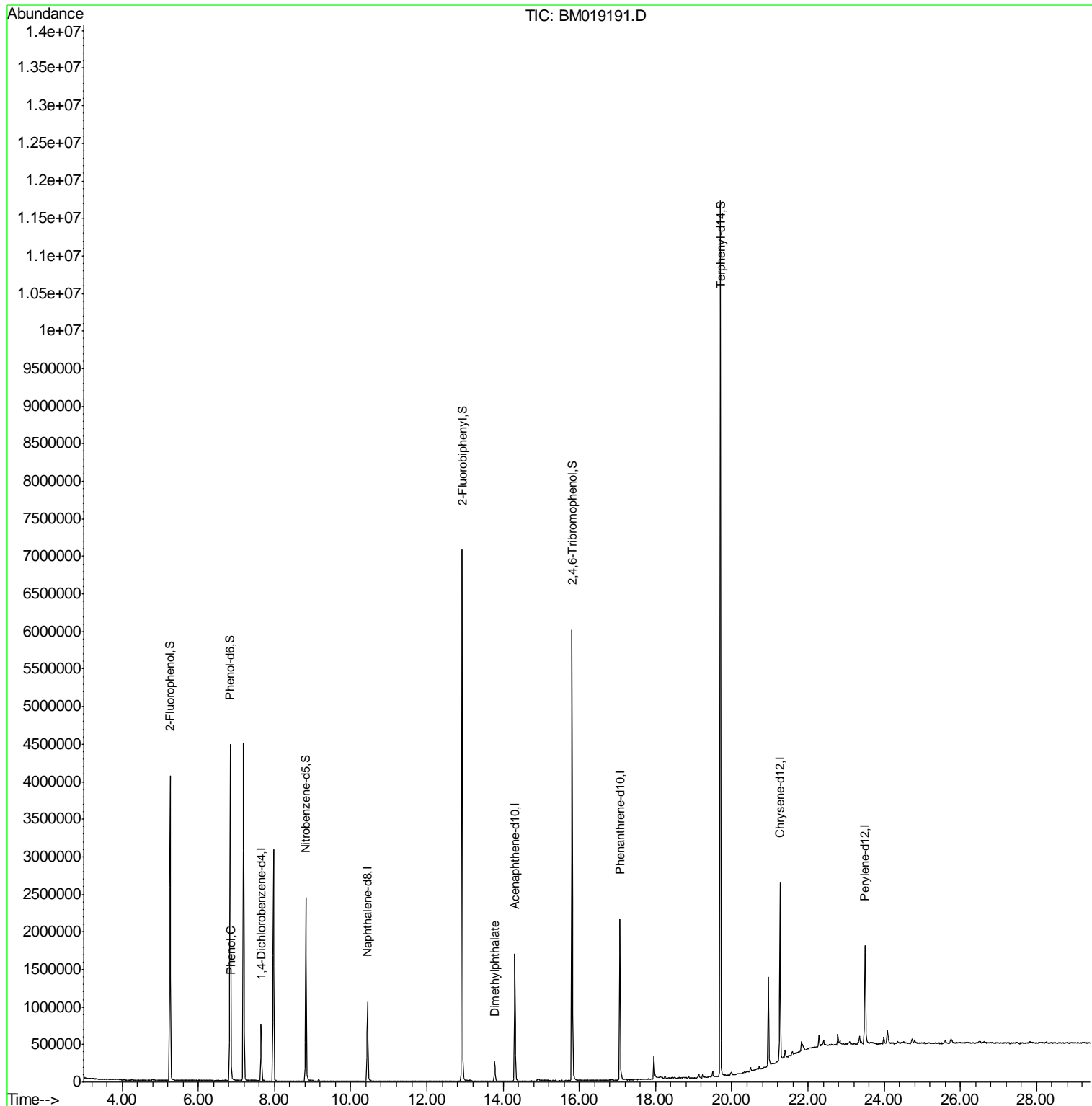
Internal Standards	R.T.	QIon	Response	Conc	Units	Dev(Min)
1) 1,4-Dichlorobenzene-d4	7.65	152	195415	20.00	ng	-0.01
21) Naphthalene-d8	10.44	136	875525	20.00	ng	-0.01
39) Acenaphthene-d10	14.31	164	542889	20.00	ng	-0.01
64) Phenanthrene-d10	17.06	188	1187376	20.00	ng	-0.01
76) Chrysene-d12	21.26	240	1031422	20.00	ng	-0.01
87) Perylene-d12	23.50	264	908769	20.00	ng	-0.01
System Monitoring Compounds						
5) 2-Fluorophenol	5.26	112	1731643	143.51	ng	0.00
7) Phenol-d6	6.84	99	2606921	147.70	ng	0.00
23) Nitrobenzene-d5	8.82	82	1604577	86.63	ng	-0.01
42) 2,4,6-Tribromophenol	15.81	330	1124832	140.33	ng	-0.01
45) 2-Fluorobiphenyl	12.92	172	3469425	83.13	ng	-0.01
79) Terphenyl-d14	19.70	244	5088094	97.93	ng	0.00
Target Compounds						
10) Phenol	6.86	94	41402	2.177	ng	81
50) Dimethylphthalate	13.78	163	193130	4.159	ng	99

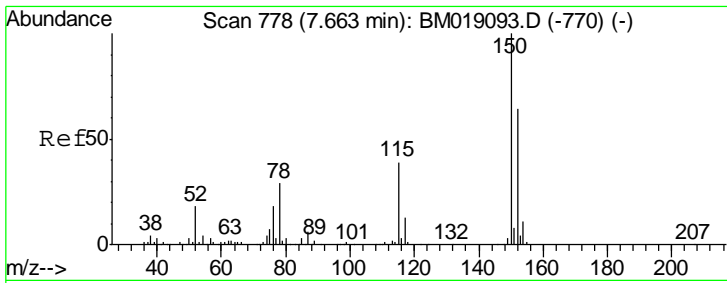
(#) = qualifier out of range (m) = manual integration (+) = signals summed

Data Path : Z:\SVOASRV\HPCHEM1\BNA M\DATA\BM031519\
 Data File : BM019191.D
 Acq On : 15 Mar 2019 18:03
 Operator : JU/SJ
 Sample : K1908-05
 Misc :
 ALS Vial : 12 Sample Multiplier: 1

Instrument :
 BNA_M
 ClientSampleId :
 93-94

Quant Time: Mar 16 01:35:19 2019
 Quant Method : Z:\SVOASRV\HPCHEM1\BNA M\METHODS\8270-BM031119.M
 Quant Title : ASP BNA STANDARDS FOR 5 POINT CALIBRATION
 QLast Update : Mon Mar 11 17:30:46 2019
 Response via : Initial Calibration

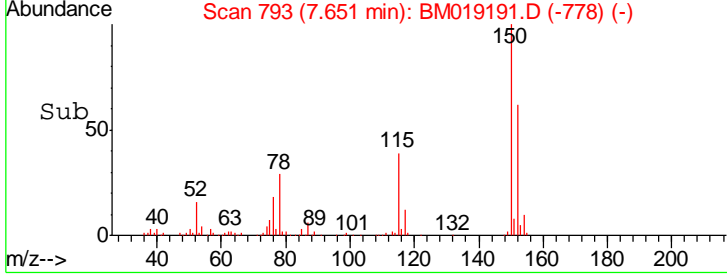
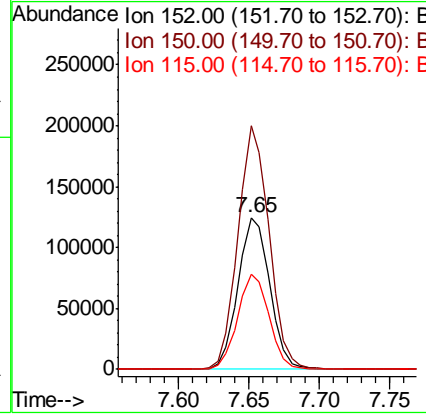
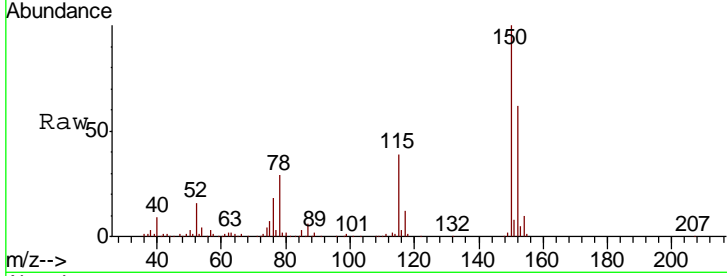




#1
 1,4-Dichlorobenzene-d4
 Concen: 20.000 ng
 RT: 7.65 min Scan# 793
 Delta R.T. -0.01 min
 Lab File: BM019191.D
 Acq: 15 Mar 2019 18:03

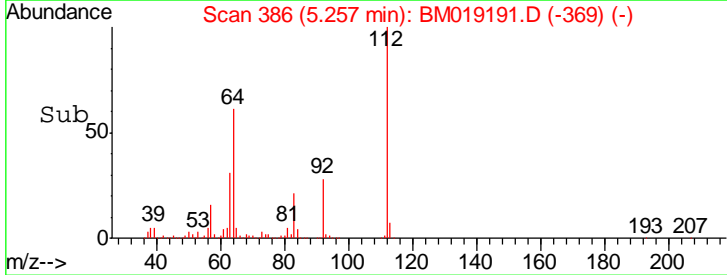
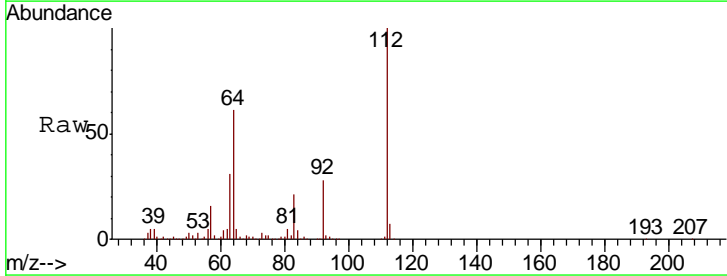
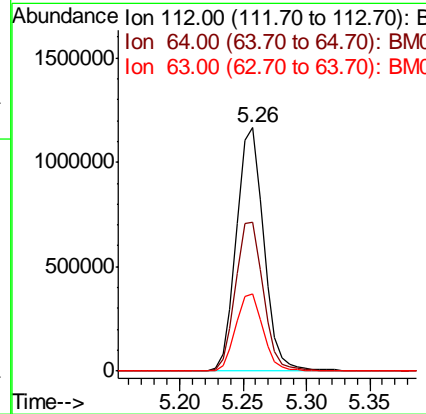
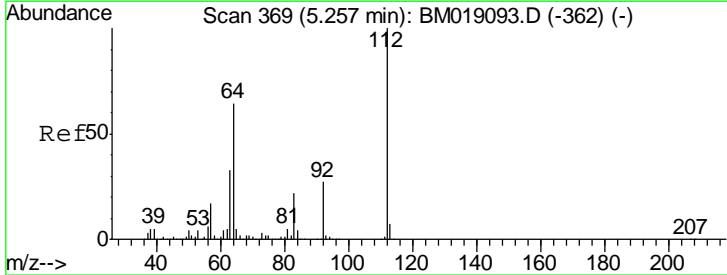
Instrument :
 BNA_M
 ClientSampled :
 93-94

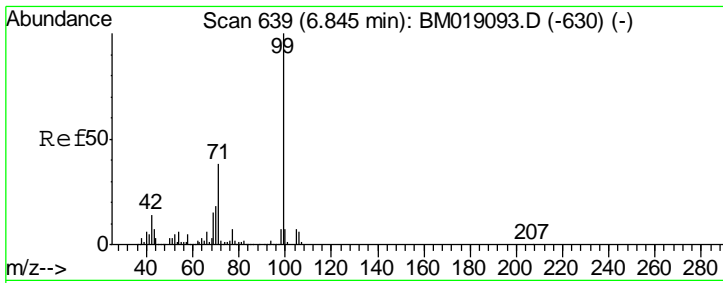
Tgt Ion	Resp	Lower	Upper
152	100		
150	160.4	125.3	187.9
115	62.8	49.4	74.0



#5
 2-Fluorophenol
 Concen: 143.508 ng
 RT: 5.26 min Scan# 386
 Delta R.T. 0.00 min
 Lab File: BM019191.D
 Acq: 15 Mar 2019 18:03

Tgt Ion	Resp	Lower	Upper
112	100		
64	61.4	51.4	77.0
63	31.5	26.6	40.0

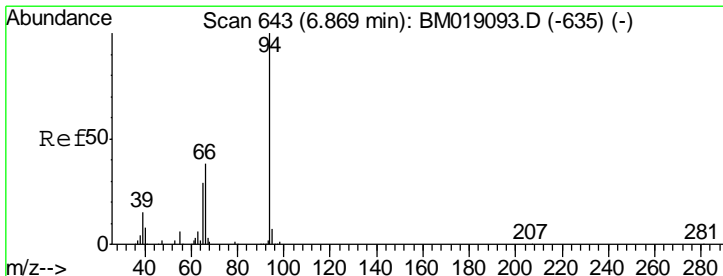
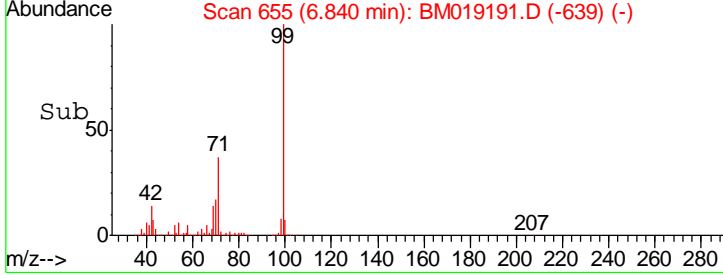
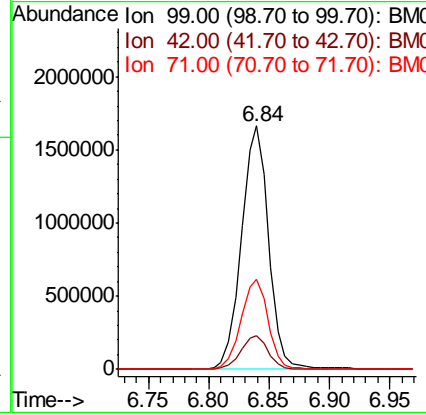
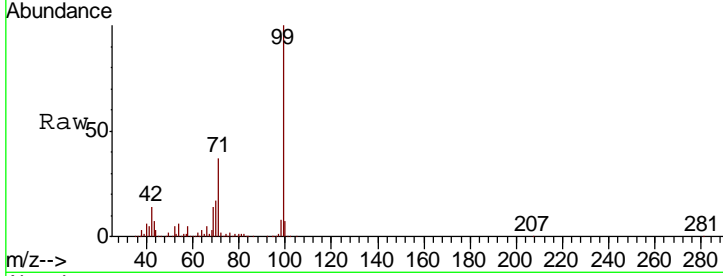




#7
 Phenol-d6
 Concen: 147.702 ng
 RT: 6.84 min Scan# 655
 Delta R.T. -0.01 min
 Lab File: BM019191.D
 Acq: 15 Mar 2019 18:03

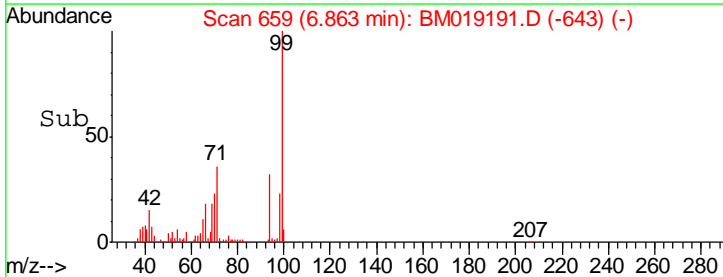
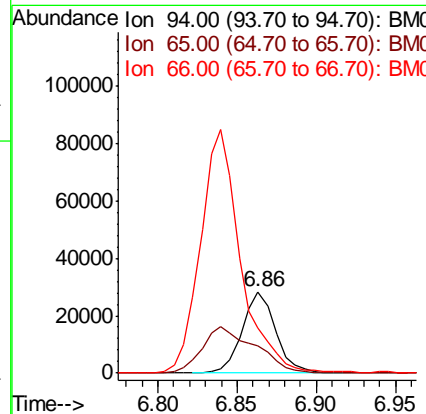
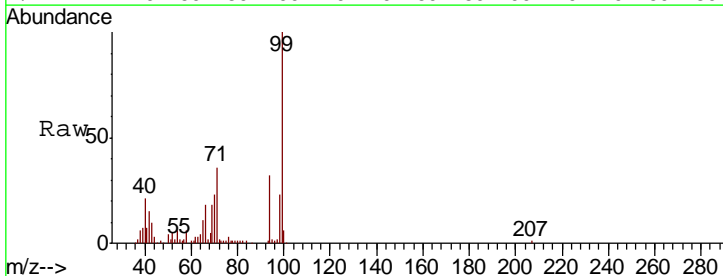
Instrument :
 BNA_M
ClientSampled :
 93-94

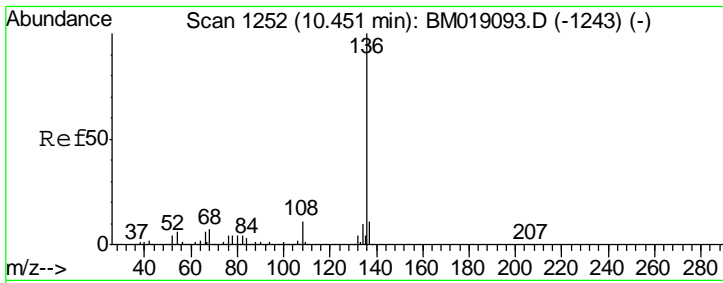
Tgt Ion	Resp	Lower	Upper
99	2606921		
42	13.6	10.9	16.3
71	37.1	30.3	45.5



#10
 Phenol
 Concen: 2.177 ng
 RT: 6.86 min Scan# 659
 Delta R.T. -0.01 min
 Lab File: BM019191.D
 Acq: 15 Mar 2019 18:03

Tgt Ion	Resp	Lower	Upper
94	41402		
65	33.9	9.7	49.7
66	55.8	19.2	59.2

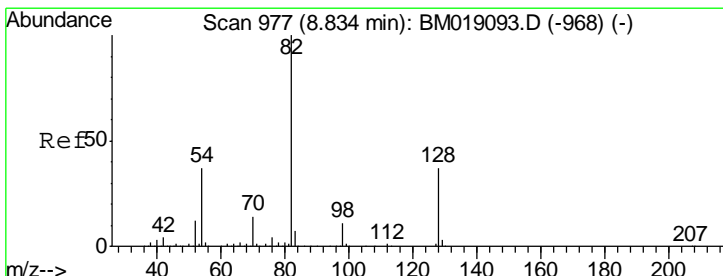
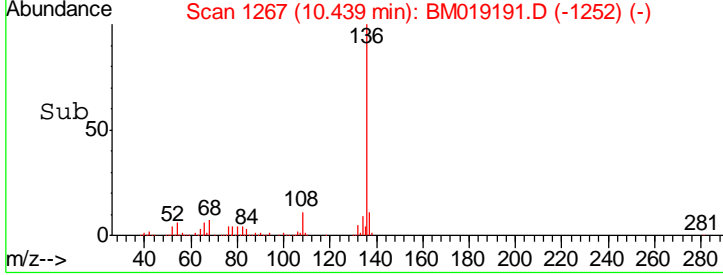
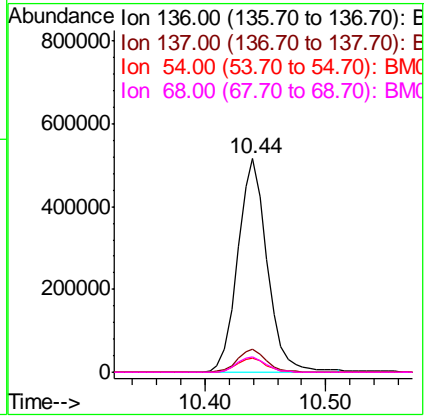
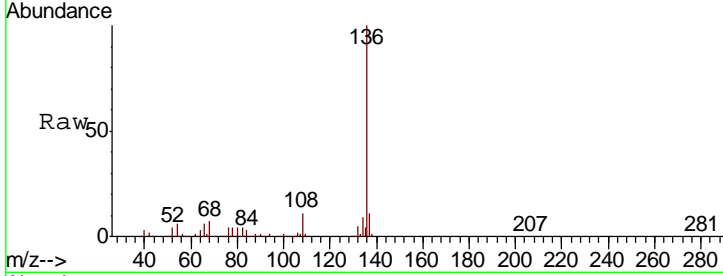




#21
 Naphthalene-d8
 Concen: 20.000 ng
 RT: 10.44 min Scan# 1267
 Delta R.T. -0.01 min
 Lab File: BM019191.D
 Acq: 15 Mar 2019 18:03

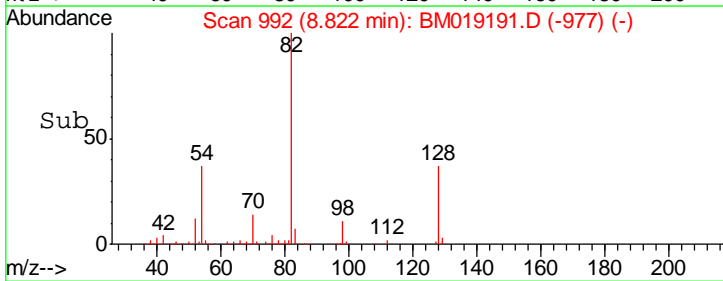
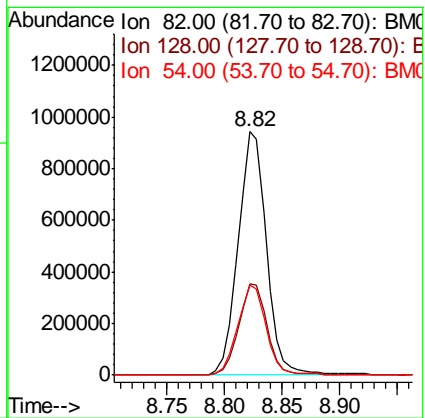
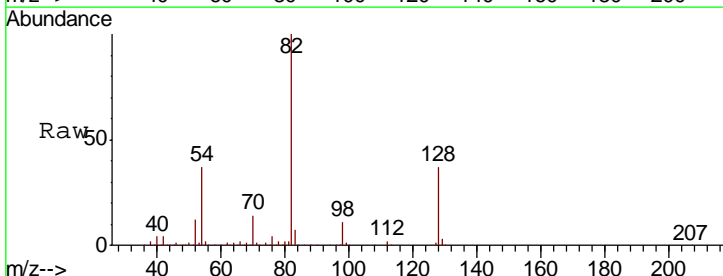
Instrument :
 BNA_M
 ClientSampled :
 93-94

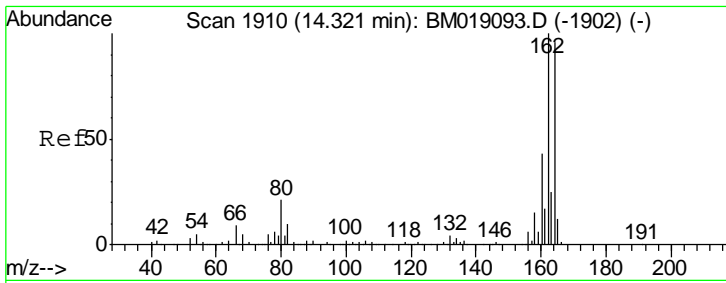
Tgt Ion	Resp	Lower	Upper
136	100		
137	10.9	8.6	13.0
54	6.4	5.2	7.8
68	7.1	5.8	8.8



#23
 Nitrobenzene-d5
 Concen: 86.632 ng
 RT: 8.82 min Scan# 992
 Delta R.T. -0.01 min
 Lab File: BM019191.D
 Acq: 15 Mar 2019 18:03

Tgt Ion	Resp	Lower	Upper
82	100		
128	37.3	29.4	44.2
54	36.8	29.9	44.9

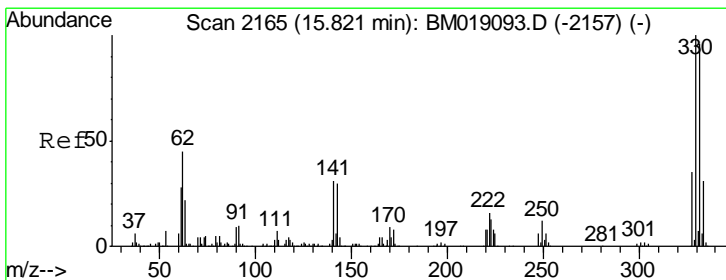
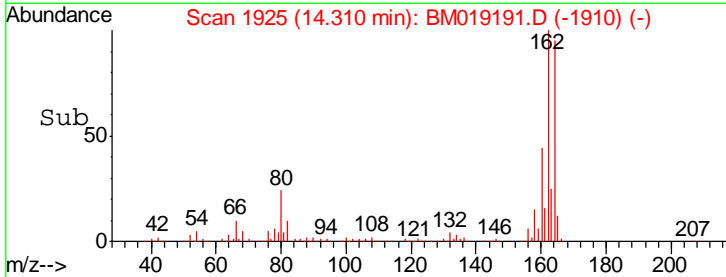
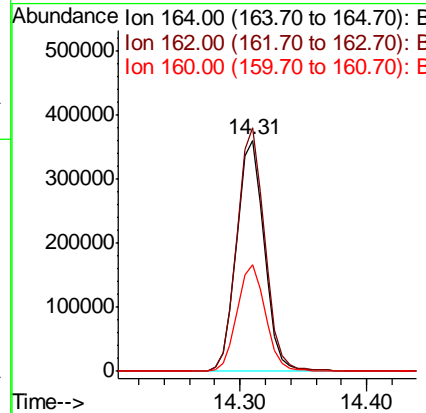
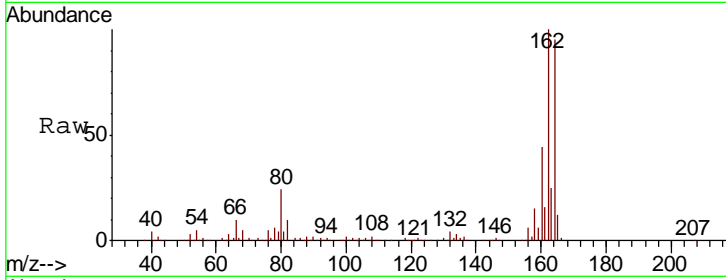




#39
 Acenaphthene-d10
 Concen: 20.000 ng
 RT: 14.31 min Scan# 1925
 Delta R.T. -0.01 min
 Lab File: BM019191.D
 Acq: 15 Mar 2019 18:03

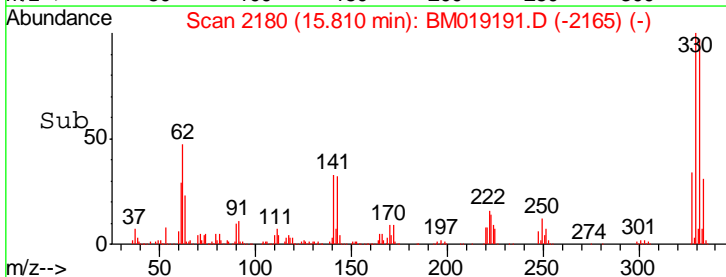
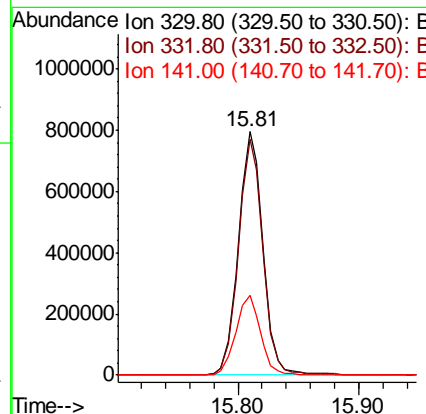
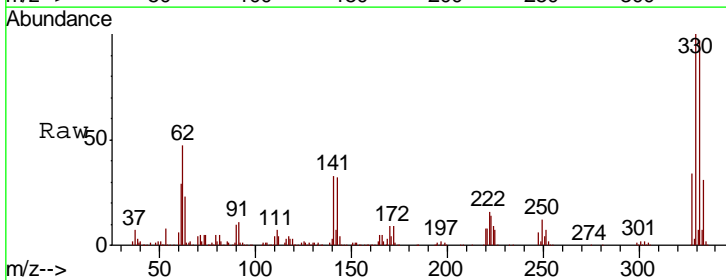
Instrument :
 BNA_M
 ClientSampled :
 93-94

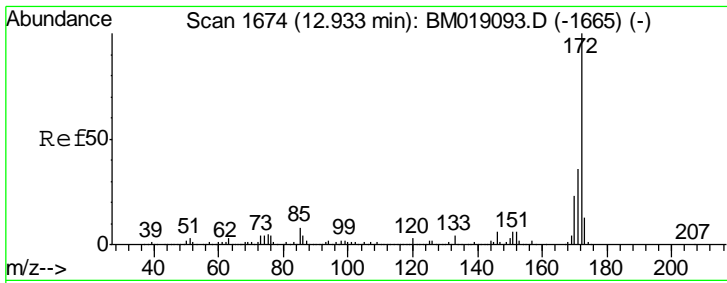
Tgt Ion	Resp	Lower	Upper
164	100		
162	105.4	83.5	125.3
160	46.3	36.3	54.5



#42
 2,4,6-Tribromophenol
 Concen: 140.331 ng
 RT: 15.81 min Scan# 2180
 Delta R.T. -0.01 min
 Lab File: BM019191.D
 Acq: 15 Mar 2019 18:03

Tgt Ion	Resp	Lower	Upper
330	100		
332	96.6	76.8	115.2
141	32.9	27.0	40.4



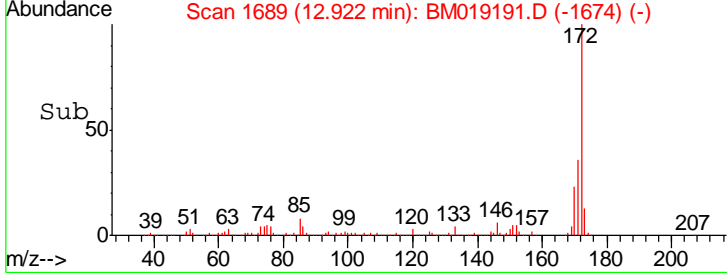
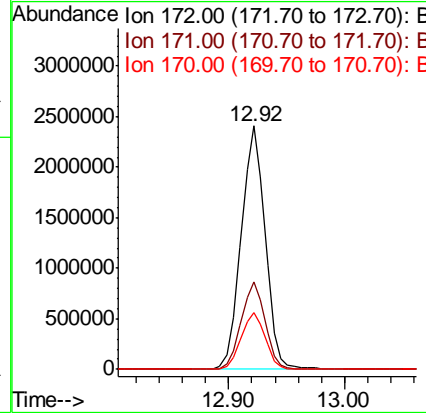
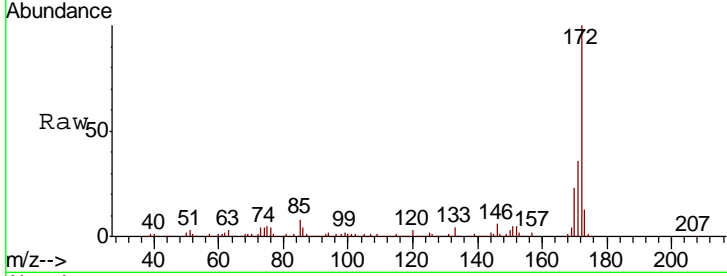


#45
 2-Fluorobiphenyl
 Concen: 83.127 ng
 RT: 12.92 min Scan# 1689
 Delta R.T. -0.01 min
 Lab File: BM019191.D
 Acq: 15 Mar 2019 18:03

Instrument :
 BNA_M
 ClientSampled :
 93-94

Tgt Ion:172 Resp: 3469425

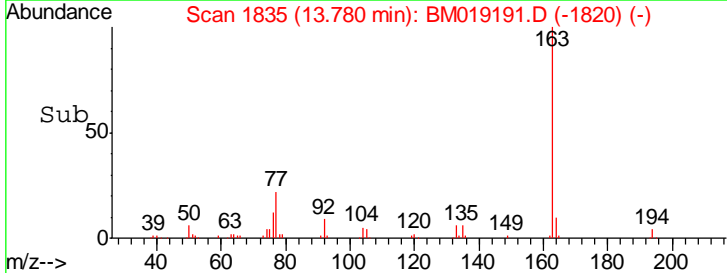
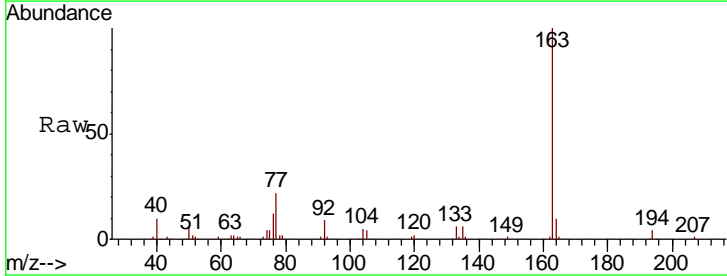
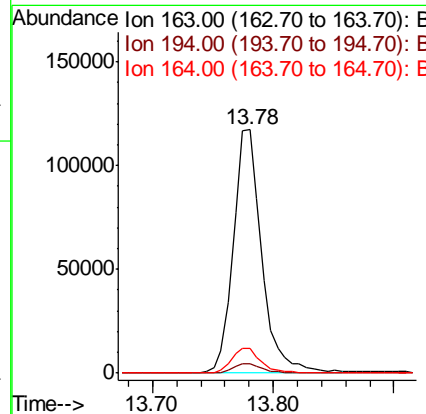
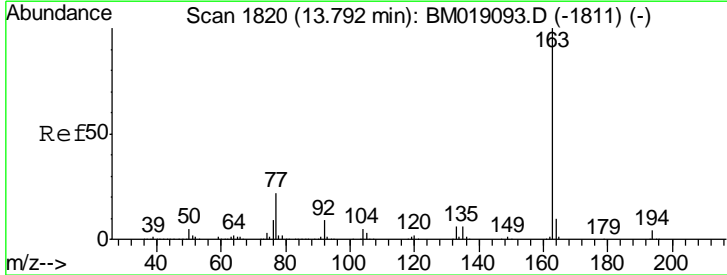
Ion	Ratio	Lower	Upper
172	100		
171	36.1	28.6	42.8
170	23.4	18.6	28.0

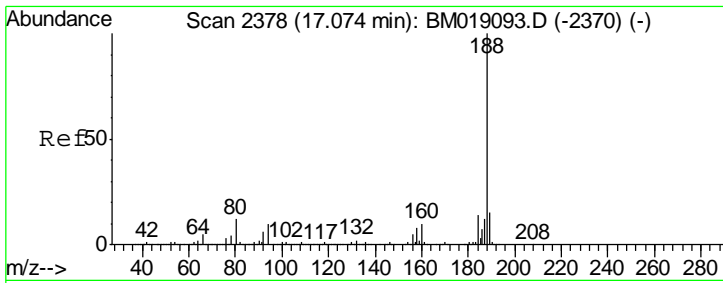


#50
 Dimethylphthalate
 Concen: 4.159 ng
 RT: 13.78 min Scan# 1835
 Delta R.T. -0.01 min
 Lab File: BM019191.D
 Acq: 15 Mar 2019 18:03

Tgt Ion:163 Resp: 193130

Ion	Ratio	Lower	Upper
163	100		
194	4.0	3.3	4.9
164	10.0	7.7	11.5



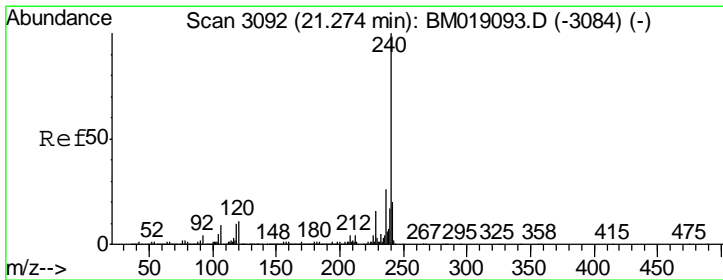
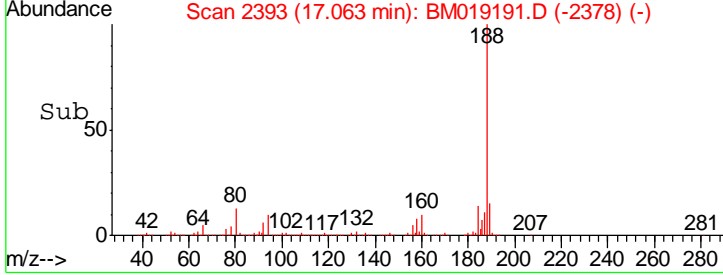
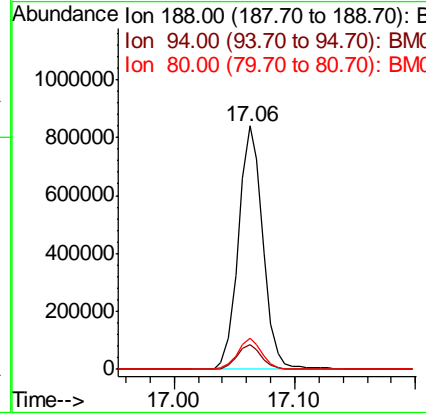
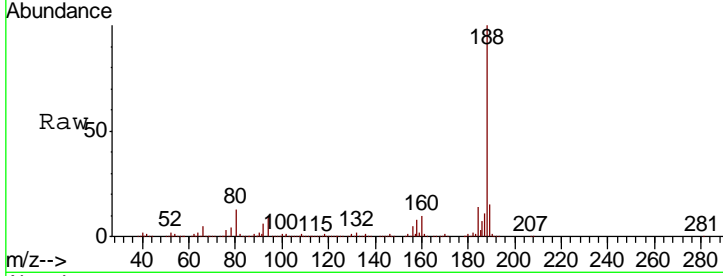


#64
 Phenanthrene-d10
 Concen: 20.000 ng
 RT: 17.06 min Scan# 2393
 Delta R.T. -0.01 min
 Lab File: BM019191.D
 Acq: 15 Mar 2019 18:03

Instrument :
 BNA_M
 ClientSampled :
 93-94

Tgt Ion:188 Resp: 1187376

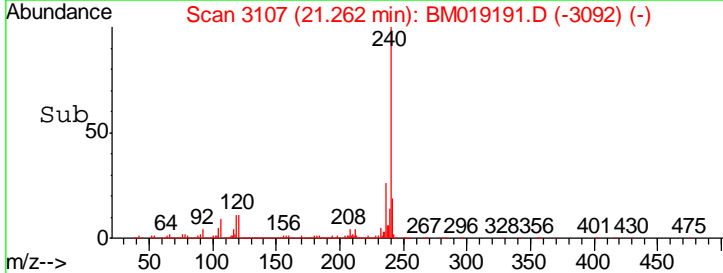
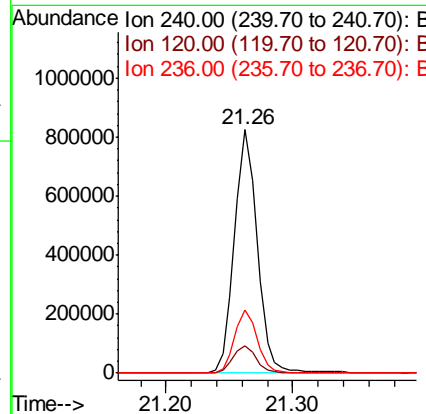
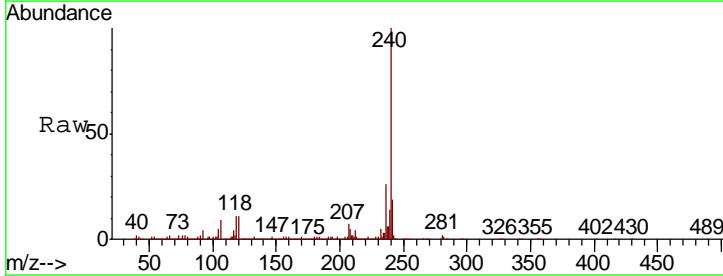
Ion	Ratio	Lower	Upper
188	100		
94	10.3	8.1	12.1
80	12.7	9.7	14.5

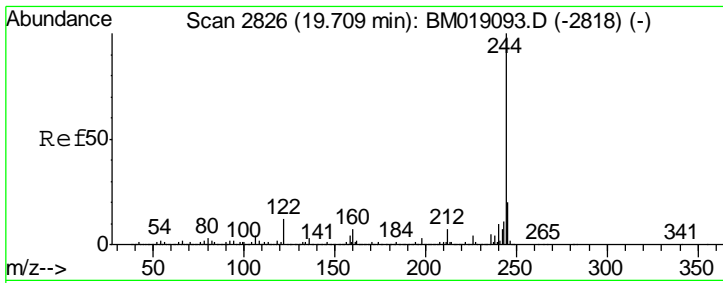


#76
 Chrysene-d12
 Concen: 20.000 ng
 RT: 21.26 min Scan# 3107
 Delta R.T. -0.01 min
 Lab File: BM019191.D
 Acq: 15 Mar 2019 18:03

Tgt Ion:240 Resp: 1031422

Ion	Ratio	Lower	Upper
240	100		
120	11.3	8.9	13.3
236	25.9	21.0	31.4



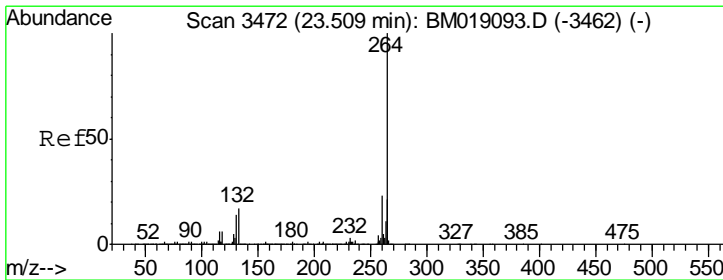
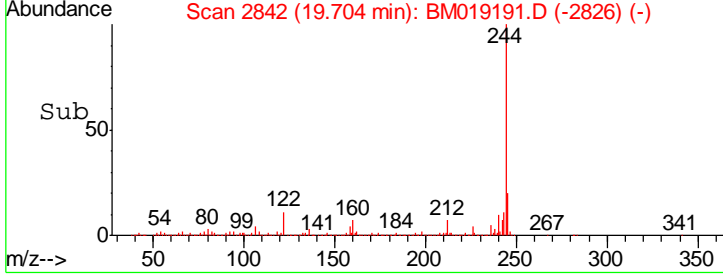
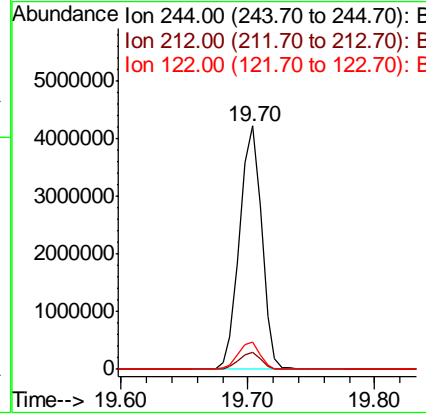
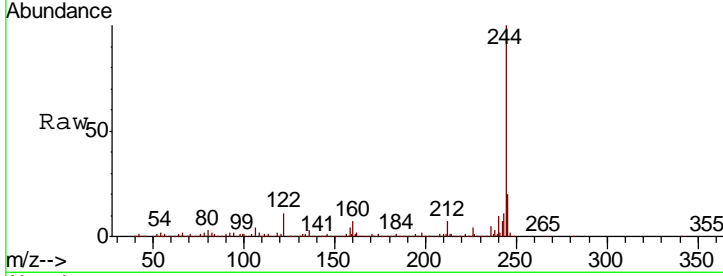


#79
 Terphenyl-d14
 Concen: 97.933 ng
 RT: 19.70 min Scan# 2842
 Delta R.T. -0.01 min
 Lab File: BM019191.D
 Acq: 15 Mar 2019 18:03

Instrument :
 BNA_M
 ClientSampled :
 93-94

Tgt Ion: 244 Resp: 5088094

Ion	Ratio	Lower	Upper
244	100		
212	6.8	5.4	8.2
122	11.4	9.4	14.2



#87
 Perylene-d12
 Concen: 20.000 ng
 RT: 23.50 min Scan# 3487
 Delta R.T. -0.01 min
 Lab File: BM019191.D
 Acq: 15 Mar 2019 18:03

Tgt Ion: 264 Resp: 908769

Ion	Ratio	Lower	Upper
264	100		
260	23.5	18.6	28.0
265	21.6	17.3	25.9

