

Data Path : Z:\SVOASRV\HPCHEM1\BNA M\DATA\BM031819\
 Data File : BM019218.D
 Acq On : 18 Mar 2019 16:39
 Operator : JU/SJ
 Sample : K1935-01
 Misc :
 ALS Vial : 8 Sample Multiplier: 1

Instrument :
 BNA_M
 ClientSampleId :
 SB-17(0.5-1.5)

Quant Time: Mar 19 07:21:51 2019
 Quant Method : Z:\SVOASRV\HPCHEM1\BNA M\METHODS\8270-BM031119.M
 Quant Title : ASP BNA STANDARDS FOR 5 POINT CALIBRATION
 QLast Update : Mon Mar 11 17:30:46 2019
 Response via : Initial Calibration

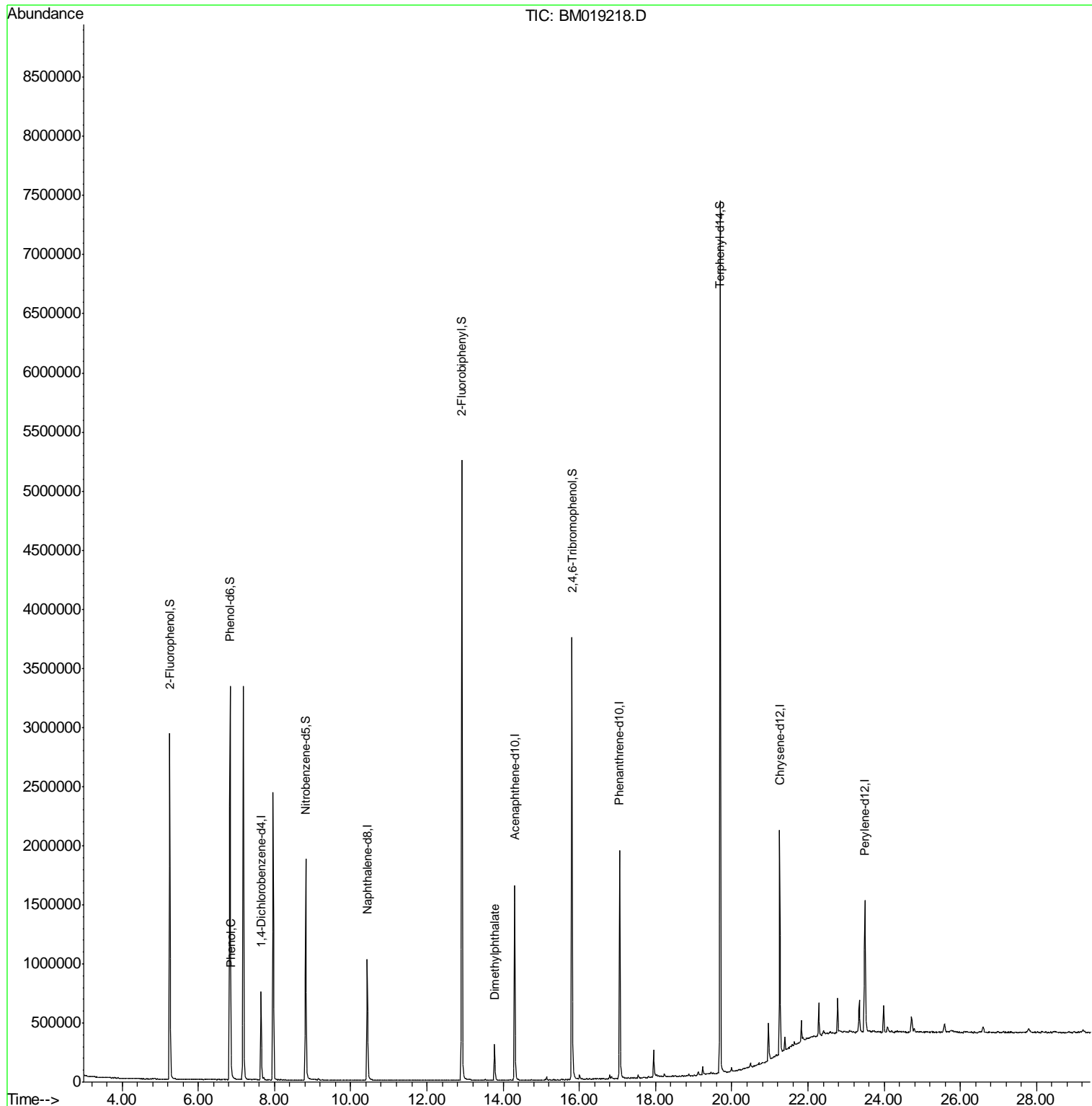
Internal Standards	R.T.	QIon	Response	Conc	Units	Dev(Min)
1) 1,4-Dichlorobenzene-d4	7.65	152	197147	20.00	ng	-0.02
21) Naphthalene-d8	10.43	136	870910	20.00	ng	-0.02
39) Acenaphthene-d10	14.30	164	536300	20.00	ng	-0.02
64) Phenanthrene-d10	17.06	188	1120892	20.00	ng	-0.02
76) Chrysene-d12	21.26	240	877813	20.00	ng	-0.02
87) Perylene-d12	23.49	264	830703	20.00	ng	-0.02
System Monitoring Compounds						
5) 2-Fluorophenol	5.25	112	1254033	103.01	ng	0.00
7) Phenol-d6	6.83	99	1965042	110.36	ng	-0.01
23) Nitrobenzene-d5	8.82	82	1268307	68.84	ng	-0.02
42) 2,4,6-Tribromophenol	15.80	330	704923	89.02	ng	-0.02
45) 2-Fluorobiphenyl	12.92	172	2654036	64.37	ng	-0.02
79) Terphenyl-d14	19.70	244	3325594	75.21	ng	-0.01
Target Compounds						
10) Phenol	6.86	94	75589	3.939	ng	89
50) Dimethylphthalate	13.77	163	227726	4.964	ng	100

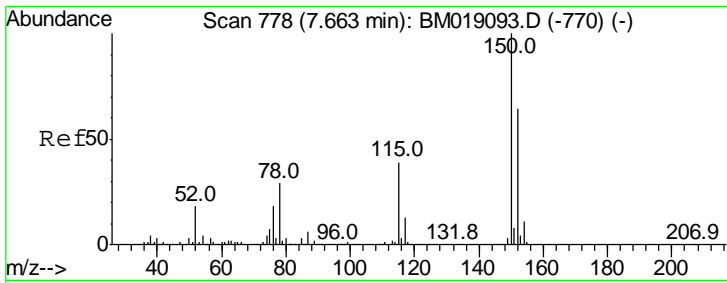
(#) = qualifier out of range (m) = manual integration (+) = signals summed

Data Path : Z:\SVOASRV\HPCHEM1\BNA M\DATA\BM031819\
 Data File : BM019218.D
 Acq On : 18 Mar 2019 16:39
 Operator : JU/SJ
 Sample : K1935-01
 Misc :
 ALS Vial : 8 Sample Multiplier: 1

Instrument :
 BNA_M
 Client Sampled :
 SB-17(0.5-1.5)

Quant Time: Mar 19 07:21:51 2019
 Quant Method : Z:\SVOASRV\HPCHEM1\BNA M\METHODS\8270-BM031119.M
 Quant Title : ASP BNA STANDARDS FOR 5 POINT CALIBRATION
 QLast Update : Mon Mar 11 17:30:46 2019
 Response via : Initial Calibration

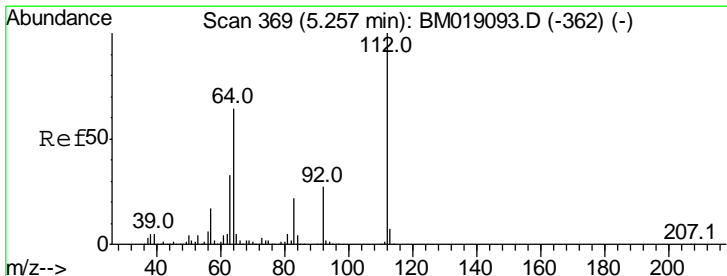
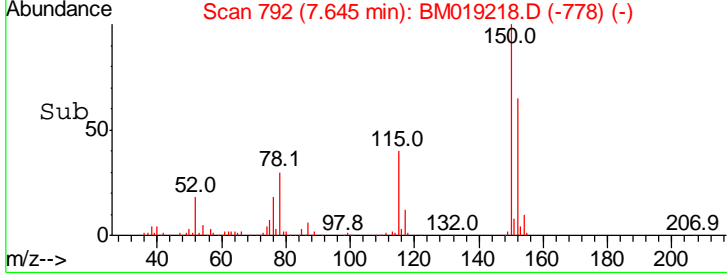
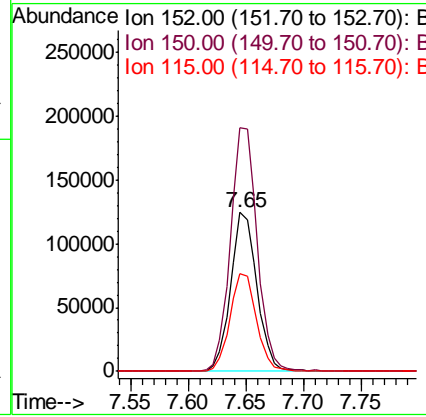
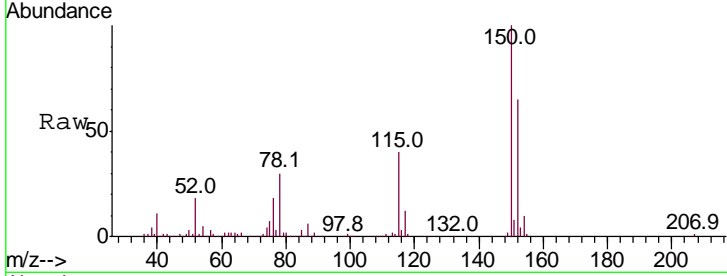




#1
 1,4-Dichlorobenzene-d4
 Concen: 20.000 ng
 RT: 7.65 min Scan# 792
 Delta R.T. -0.02 min
 Lab File: BM019218.D
 Acq: 18 Mar 2019 16:39

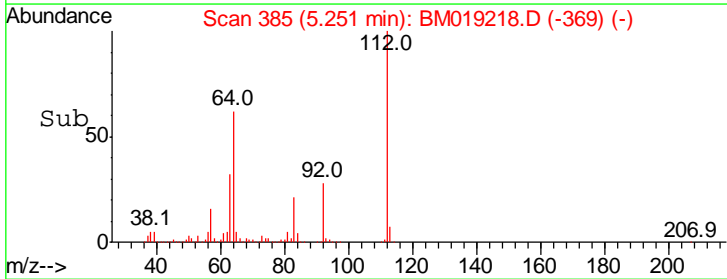
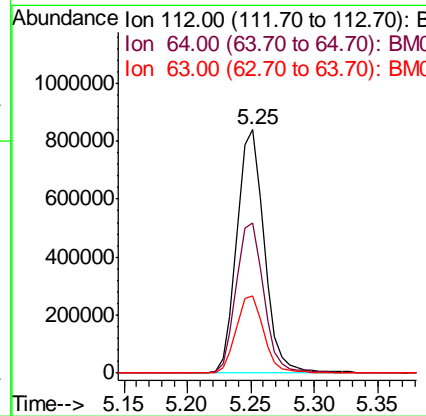
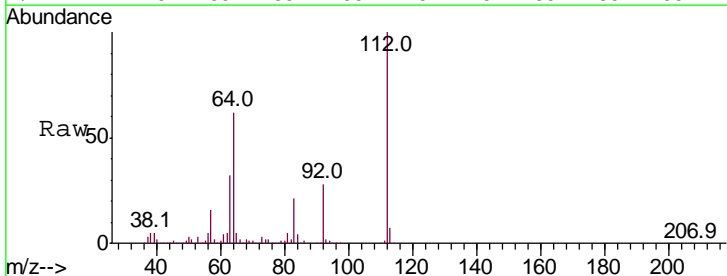
Instrument :
 BNA_M
ClientSampleId :
 SB-17(0.5-1.5)

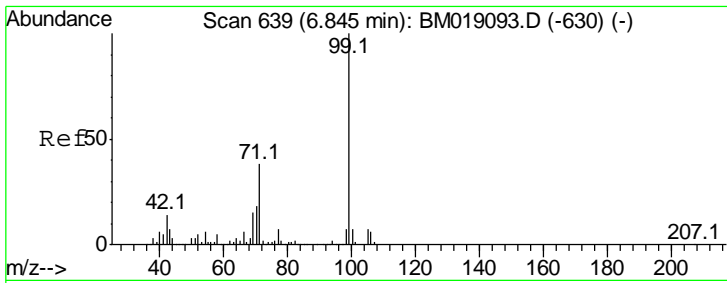
Tgt Ion	Resp	Lower	Upper
152	197147		
150	153.3	125.3	187.9
115	61.2	49.4	74.0



#5
 2-Fluorophenol
 Concen: 103.013 ng
 RT: 5.25 min Scan# 385
 Delta R.T. -0.01 min
 Lab File: BM019218.D
 Acq: 18 Mar 2019 16:39

Tgt Ion	Resp	Lower	Upper
112	1254033		
64	61.6	51.4	77.0
63	31.6	26.6	40.0

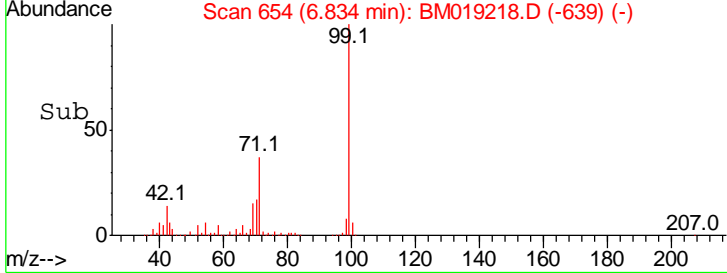
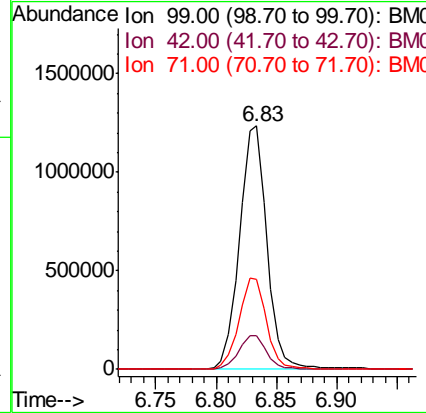
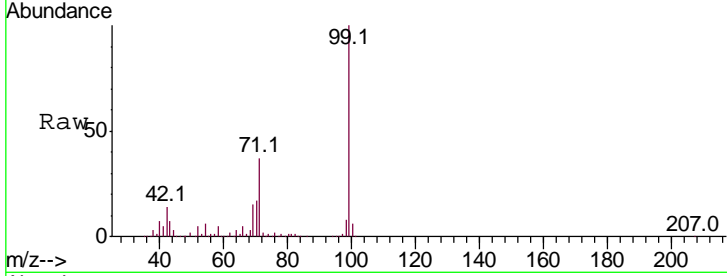




#7
 Phenol-d6
 Concen: 110.357 ng
 RT: 6.83 min Scan# 654
 Delta R.T. -0.01 min
 Lab File: BM019218.D
 Acq: 18 Mar 2019 16:39

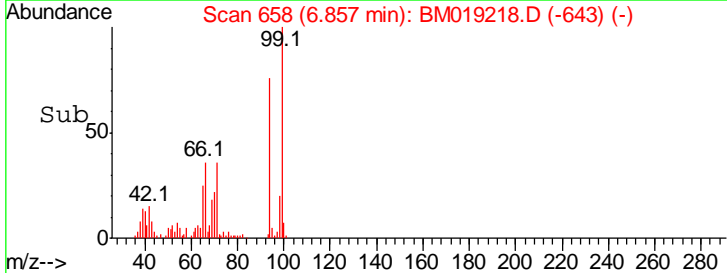
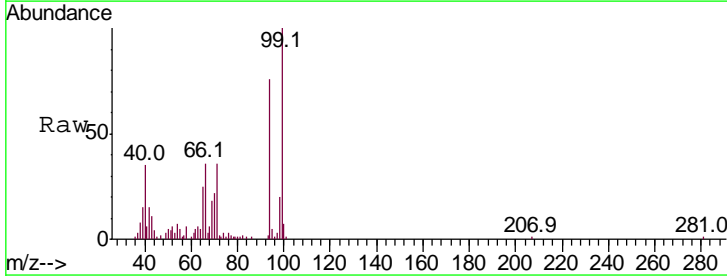
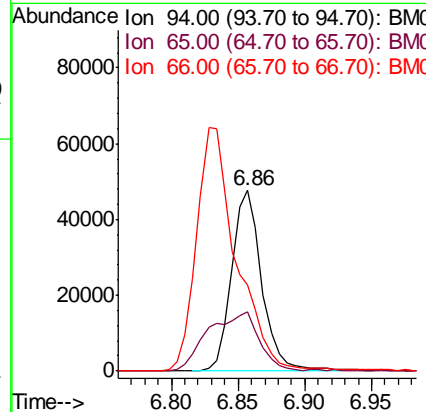
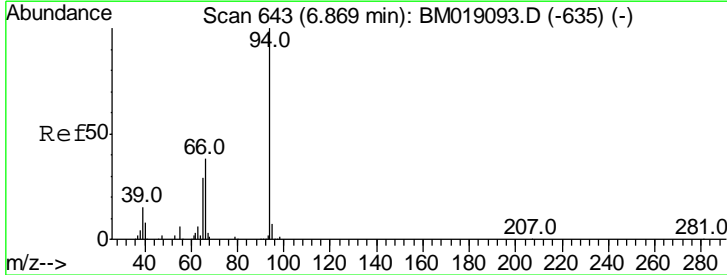
Instrument :
 BNA_M
 ClientSampled :
 SB-17(0.5-1.5)

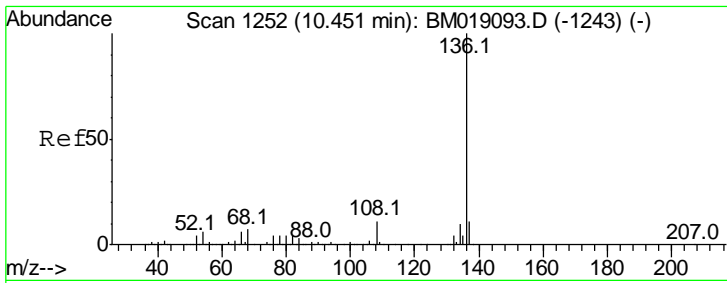
Tgt Ion	Resp	Lower	Upper
99	100		
42	13.6	10.9	16.3
71	37.0	30.3	45.5



#10
 Phenol
 Concen: 3.939 ng
 RT: 6.86 min Scan# 658
 Delta R.T. -0.01 min
 Lab File: BM019218.D
 Acq: 18 Mar 2019 16:39

Tgt Ion	Resp	Lower	Upper
94	100		
65	33.1	9.7	49.7
66	47.7	19.2	59.2

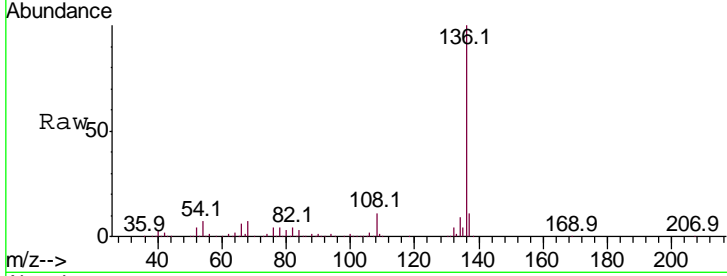




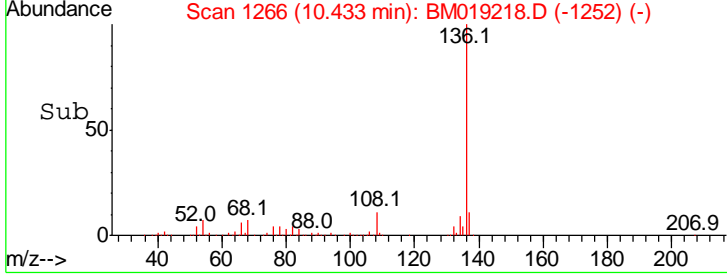
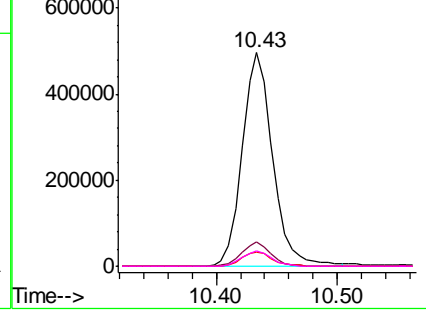
#21
 Naphthalene-d8
 Concen: 20.000 ng
 RT: 10.43 min Scan# 1266
 Delta R.T. -0.02 min
 Lab File: BM019218.D
 Acq: 18 Mar 2019 16:39

Instrument :
 BNA_M
ClientSampled :
 SB-17(0.5-1.5)

Tgt Ion	Resp	Lower	Upper
136	100		
137	11.4	8.6	13.0
54	6.9	5.2	7.8
68	7.2	5.8	8.8

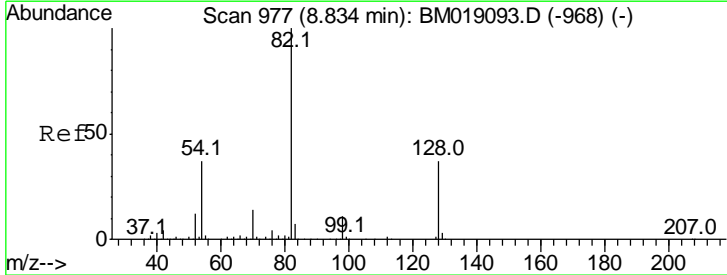


Abundance Ion 136.00 (135.70 to 136.70): E
 Ion 137.00 (136.70 to 137.70): E
 Ion 54.00 (53.70 to 54.70): BM
 Ion 68.00 (67.70 to 68.70): BM

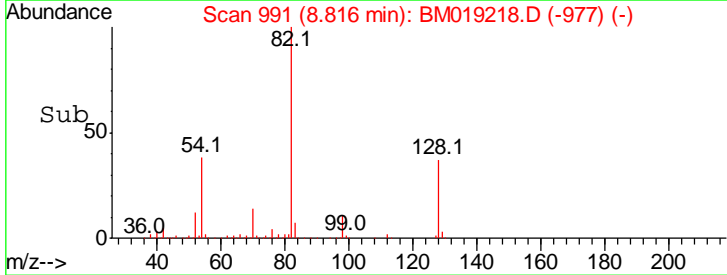
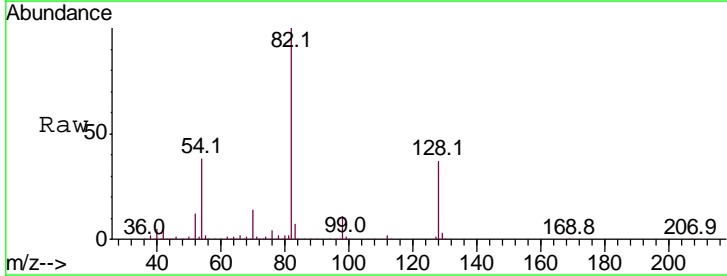
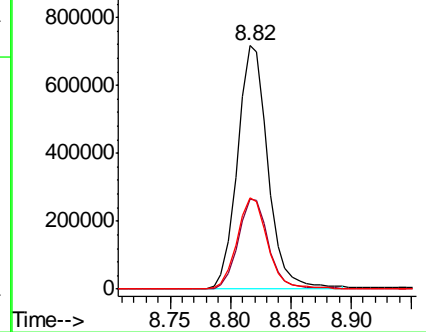


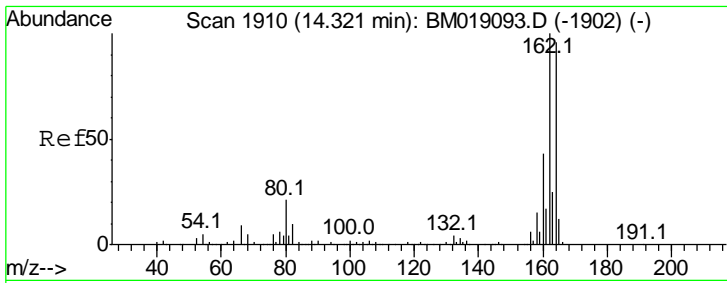
#23
 Nitrobenzene-d5
 Concen: 68.840 ng
 RT: 8.82 min Scan# 991
 Delta R.T. -0.02 min
 Lab File: BM019218.D
 Acq: 18 Mar 2019 16:39

Tgt Ion	Resp	Lower	Upper
82	100		
128	37.1	29.4	44.2
54	37.7	29.9	44.9



Abundance Ion 82.00 (81.70 to 82.70): BM
 Ion 128.00 (127.70 to 128.70): E
 Ion 54.00 (53.70 to 54.70): BM

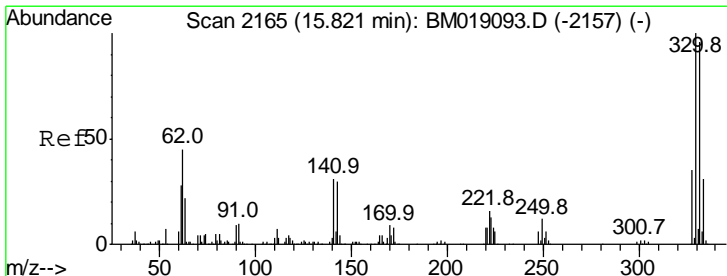
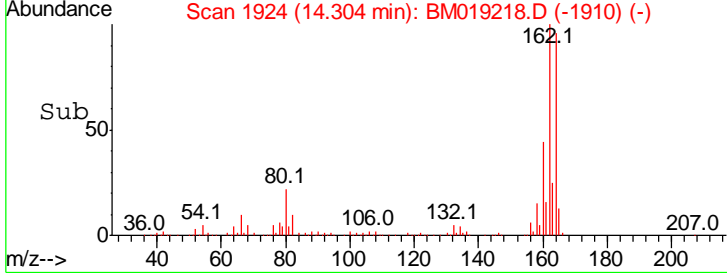
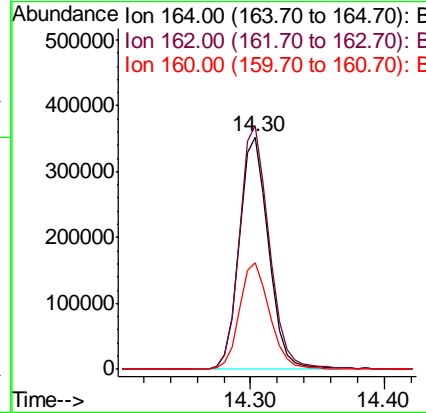
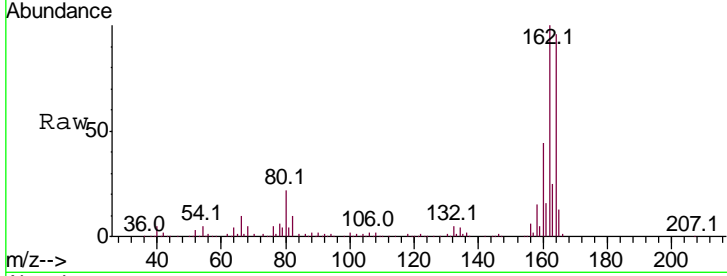




#39
 Acenaphthene-d10
 Concen: 20.000 ng
 RT: 14.30 min Scan# 1924
 Delta R.T. -0.02 min
 Lab File: BM019218.D
 Acq: 18 Mar 2019 16:39

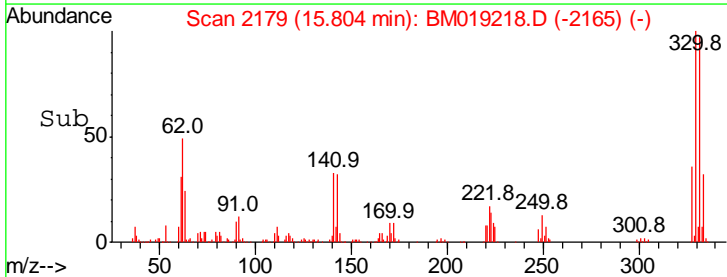
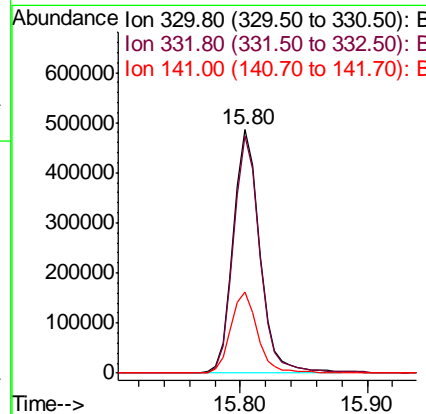
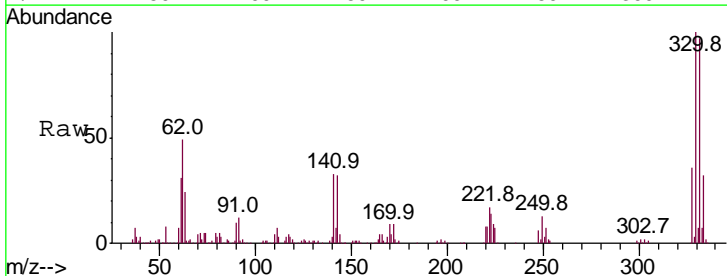
Instrument :
 BNA_M
 ClientSampleId :
 SB-17(0.5-1.5)

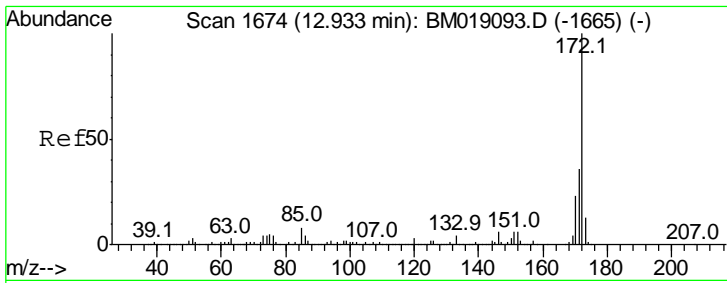
Tgt Ion	Resp	Lower	Upper
164	100		
162	104.6	83.5	125.3
160	45.8	36.3	54.5



#42
 2,4,6-Tribromophenol
 Concen: 89.025 ng
 RT: 15.80 min Scan# 2179
 Delta R.T. -0.02 min
 Lab File: BM019218.D
 Acq: 18 Mar 2019 16:39

Tgt Ion	Resp	Lower	Upper
330	100		
332	96.5	76.8	115.2
141	33.6	27.0	40.4



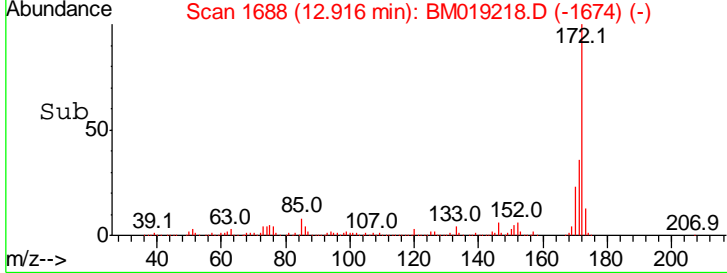
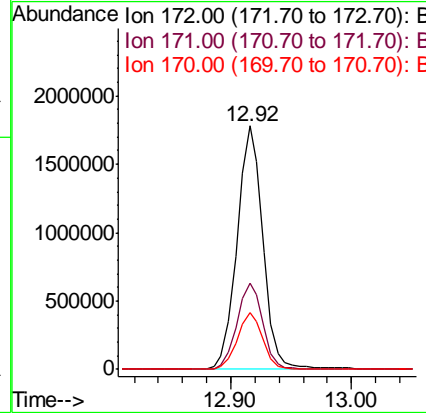
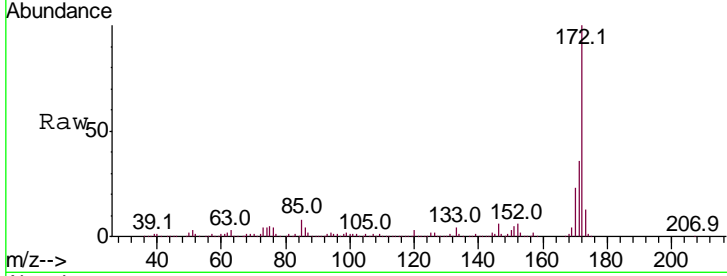


#45
 2-Fluorobiphenyl
 Concen: 64.372 ng
 RT: 12.92 min Scan# 1688
 Delta R.T. -0.02 min
 Lab File: BM019218.D
 Acq: 18 Mar 2019 16:39

Instrument :
 BNA_M
 ClientSampleId :
 SB-17(0.5-1.5)

Tgt Ion:172 Resp: 2654036

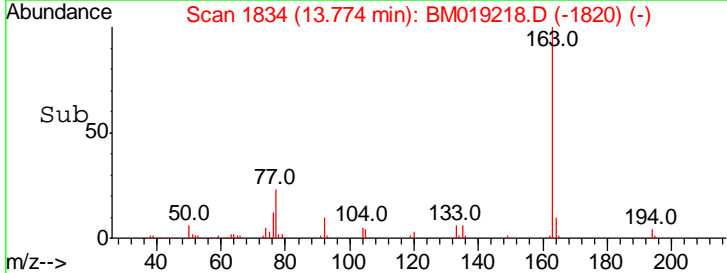
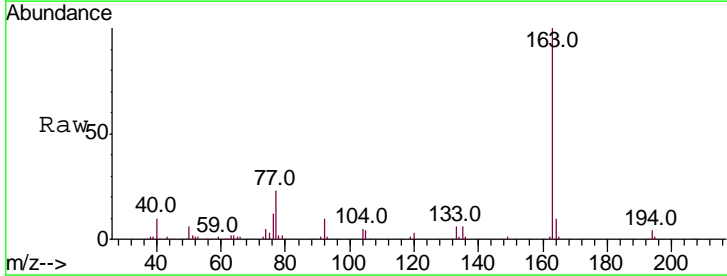
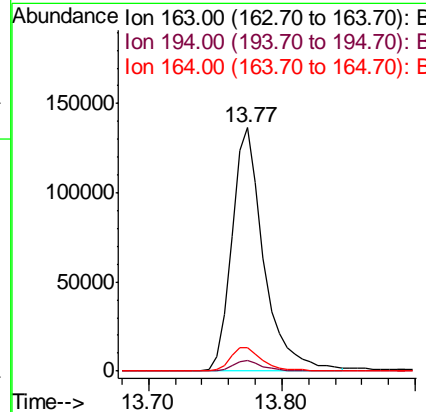
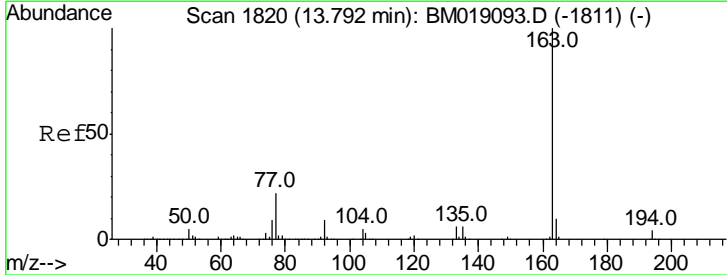
Ion	Ratio	Lower	Upper
172	100		
171	35.5	28.6	42.8
170	23.3	18.6	28.0

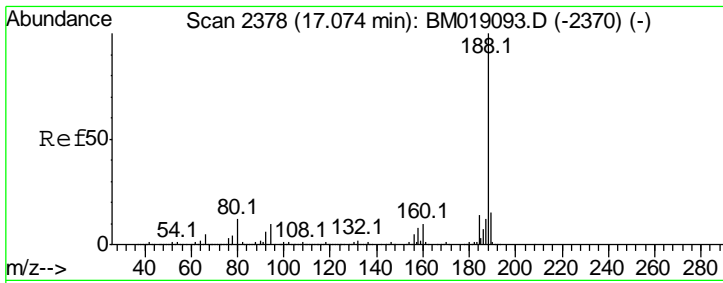


#50
 Dimethylphthalate
 Concen: 4.964 ng
 RT: 13.77 min Scan# 1834
 Delta R.T. -0.02 min
 Lab File: BM019218.D
 Acq: 18 Mar 2019 16:39

Tgt Ion:163 Resp: 227726

Ion	Ratio	Lower	Upper
163	100		
194	4.2	3.3	4.9
164	9.5	7.7	11.5



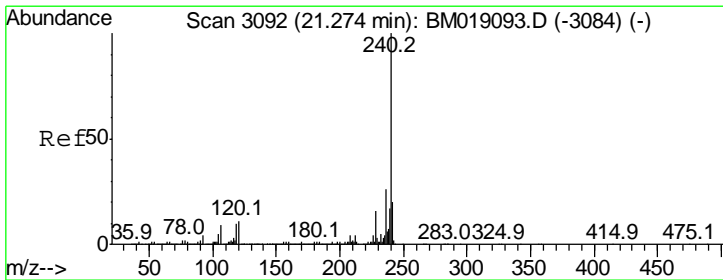
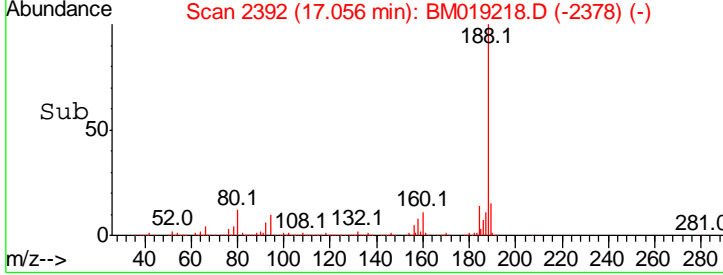
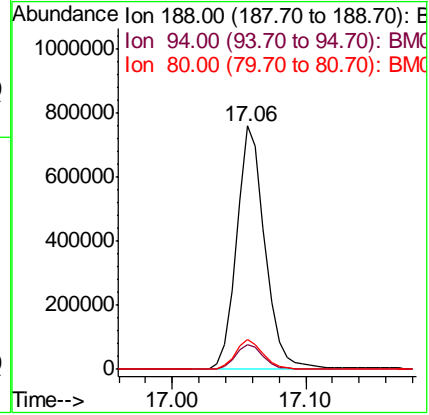
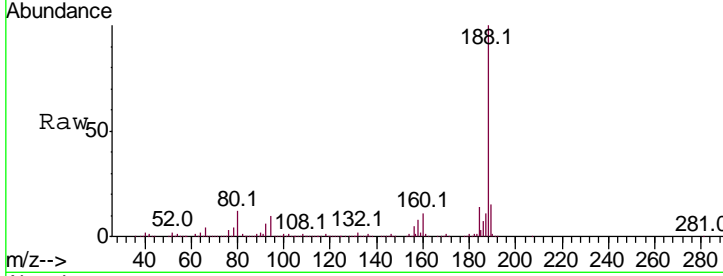


#64
 Phenanthrene-d10
 Concen: 20.000 ng
 RT: 17.06 min Scan# 2392
 Delta R.T. -0.02 min
 Lab File: BM019218.D
 Acq: 18 Mar 2019 16:39

Instrument :
 BNA_M
 Client Sampled :
 SB-17(0.5-1.5)

Tgt Ion: 188 Resp: 1120892

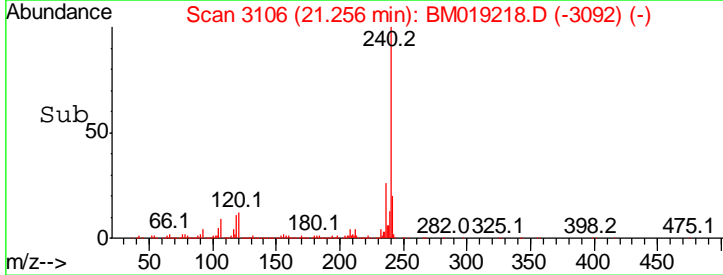
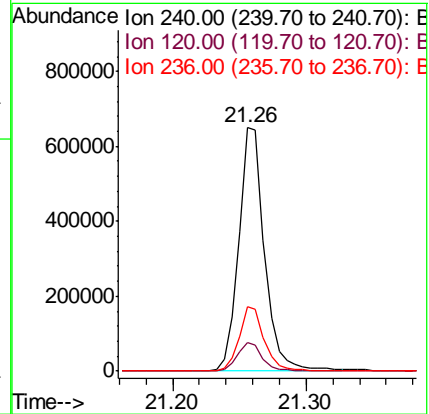
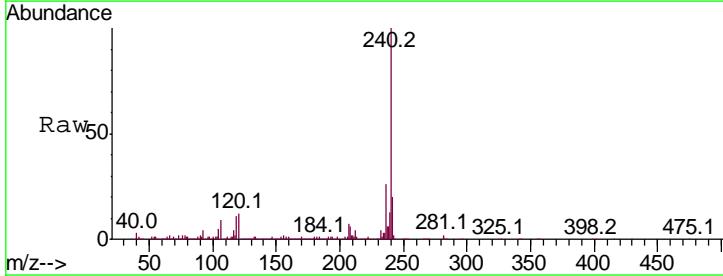
Ion	Ratio	Lower	Upper
188	100		
94	10.1	8.1	12.1
80	12.2	9.7	14.5

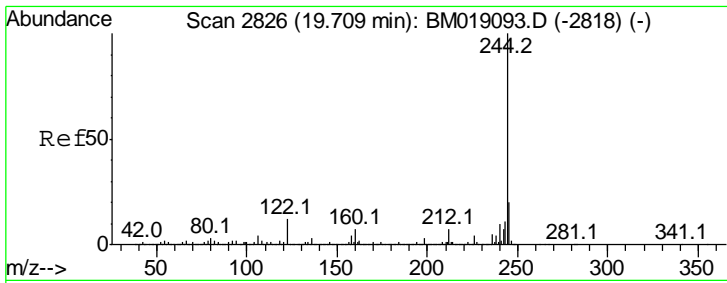


#76
 Chrysene-d12
 Concen: 20.000 ng
 RT: 21.26 min Scan# 3106
 Delta R.T. -0.02 min
 Lab File: BM019218.D
 Acq: 18 Mar 2019 16:39

Tgt Ion: 240 Resp: 877813

Ion	Ratio	Lower	Upper
240	100		
120	11.8	8.9	13.3
236	26.4	21.0	31.4



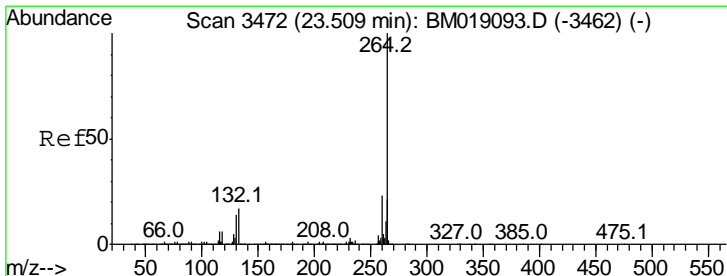
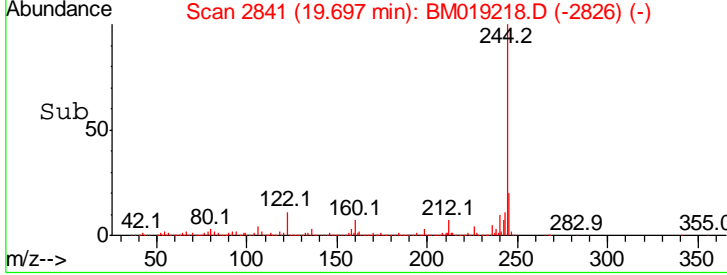
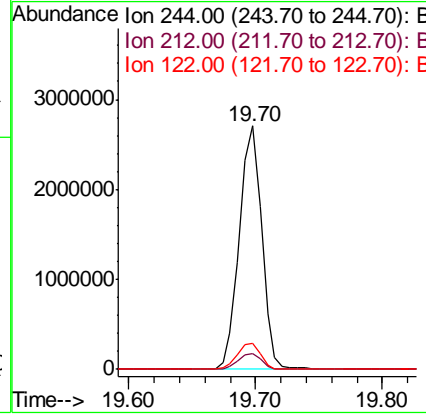
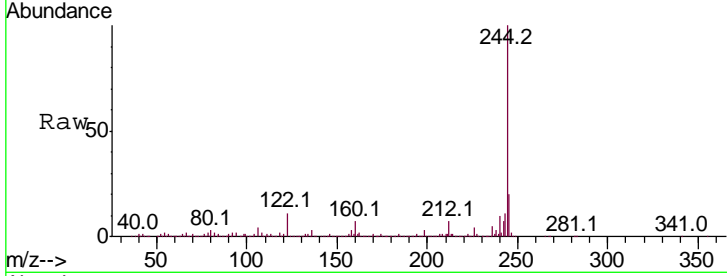


#79
 Terphenyl-d14
 Concen: 75.210 ng
 RT: 19.70 min Scan# 2841
 Delta R.T. -0.01 min
 Lab File: BM019218.D
 Acq: 18 Mar 2019 16:39

Instrument :
 BNA_M
ClientSampleId :
 SB-17(0.5-1.5)

Tgt Ion: 244 Resp: 3325594

Ion	Ratio	Lower	Upper
244	100		
212	6.6	5.4	8.2
122	10.8	9.4	14.2



#87
 Perylene-d12
 Concen: 20.000 ng
 RT: 23.49 min Scan# 3486
 Delta R.T. -0.02 min
 Lab File: BM019218.D
 Acq: 18 Mar 2019 16:39

Tgt Ion: 264 Resp: 830703

Ion	Ratio	Lower	Upper
264	100		
260	23.7	18.6	28.0
265	22.0	17.3	25.9

