

Data Path : Z:\SVOASRV\HPCHEM1\BNA\_M\DATA\BM031919\  
 Data File : BM019258.D  
 Acq On : 20 Mar 2019 07:43  
 Operator : JU/SJ  
 Sample : K1948-09  
 Misc :  
 ALS Vial : 29 Sample Multiplier: 1

Instrument :  
 BNA\_M  
 ClientSampleId :  
 INV-025-SW03-031319

Quant Time: Mar 20 09:41:03 2019  
 Quant Method : Z:\SVOASRV\HPCHEM1\BNA\_M\METHODS\8270-BM031119.M  
 Quant Title : ASP BNA STANDARDS FOR 5 POINT CALIBRATION  
 QLast Update : Mon Mar 11 17:30:46 2019  
 Response via : Initial Calibration

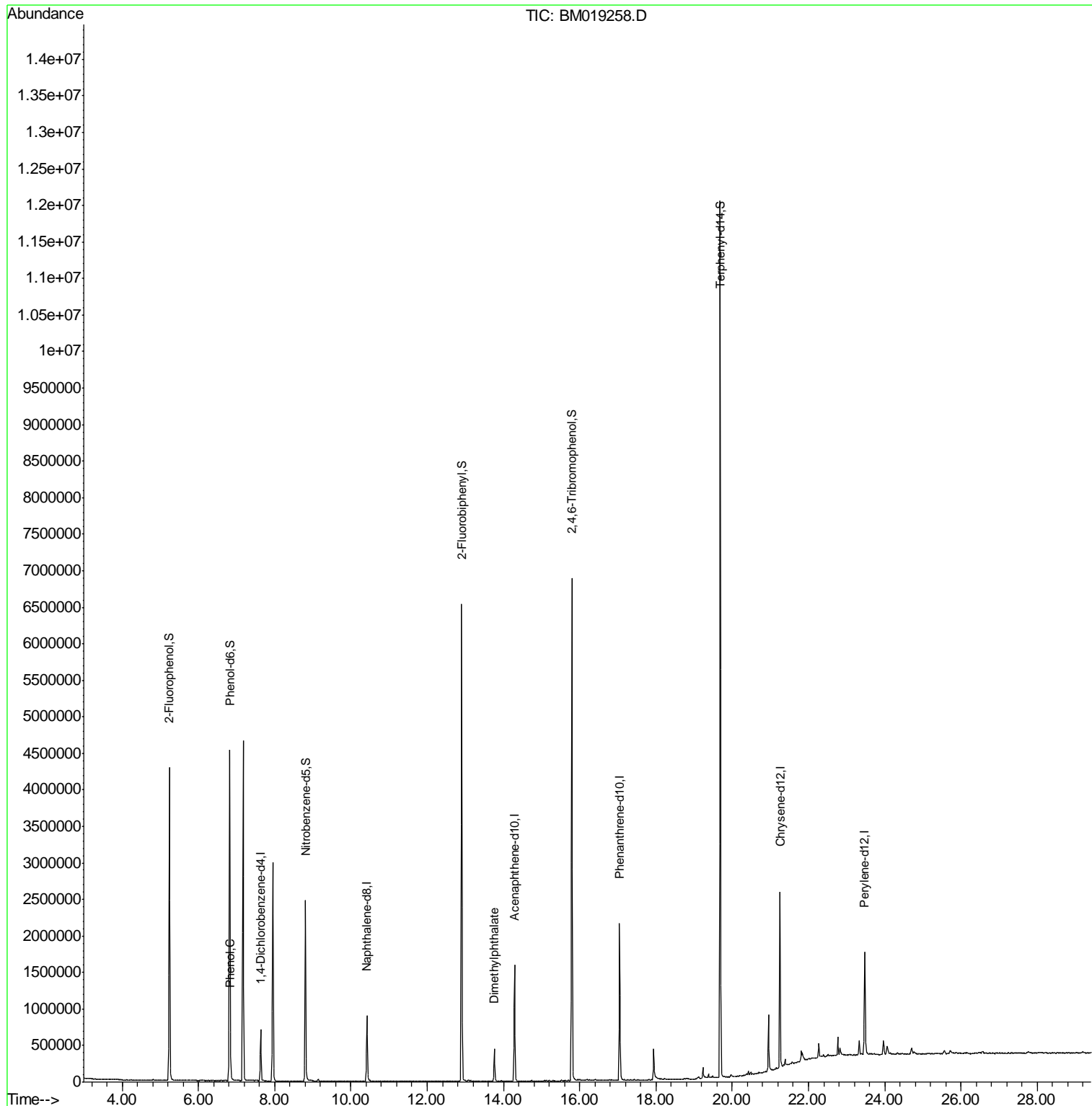
Internal Standards	R.T.	QIon	Response	Conc	Units	Dev(Min)
1) 1,4-Dichlorobenzene-d4	7.63	152	184990	20.00	ng	-0.03
21) Naphthalene-d8	10.42	136	767448	20.00	ng	-0.03
39) Acenaphthene-d10	14.29	164	506481	20.00	ng	-0.03
64) Phenanthrene-d10	17.05	188	1192690	20.00	ng	-0.03
76) Chrysene-d12	21.25	240	1132313	20.00	ng	-0.02
87) Perylene-d12	23.47	264	1011575	20.00	ng	-0.03
System Monitoring Compounds						
5) 2-Fluorophenol	5.23	112	1798851	157.48	ng	-0.02
7) Phenol-d6	6.82	99	2671786	159.91	ng	-0.02
23) Nitrobenzene-d5	8.80	82	1585388	97.65	ng	-0.03
42) 2,4,6-Tribromophenol	15.79	330	1265015	169.16	ng	-0.03
45) 2-Fluorobiphenyl	12.90	172	3162989	81.23	ng	-0.03
79) Terphenyl-d14	19.69	244	5497534	96.39	ng	-0.02
Target Compounds						
10) Phenol	6.85	94	66074	3.669	ng	91
50) Dimethylphthalate	13.76	163	299159	6.905	ng	99

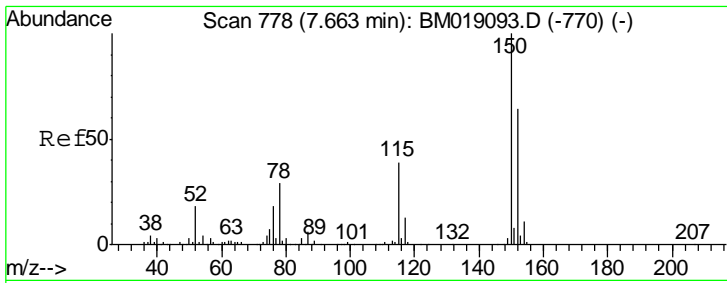
(#) = qualifier out of range (m) = manual integration (+) = signals summed

Data Path : Z:\SVOASRV\HPCHEM1\BNA\_M\DATA\BM031919\  
Data File : BM019258.D  
Acq On : 20 Mar 2019 07:43  
Operator : JU/SJ  
Sample : K1948-09  
Misc :  
ALS Vial : 29 Sample Multiplier: 1

Instrument :  
BNA\_M  
ClientSampleId :  
INV-025-SW03-031319

Quant Time: Mar 20 09:41:03 2019  
Quant Method : Z:\SVOASRV\HPCHEM1\BNA\_M\METHODS\8270-BM031119.M  
Quant Title : ASP BNA STANDARDS FOR 5 POINT CALIBRATION  
QLast Update : Mon Mar 11 17:30:46 2019  
Response via : Initial Calibration

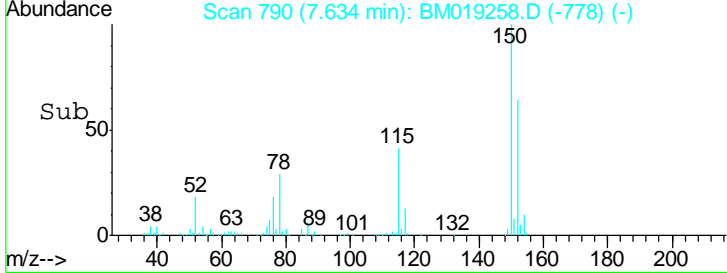
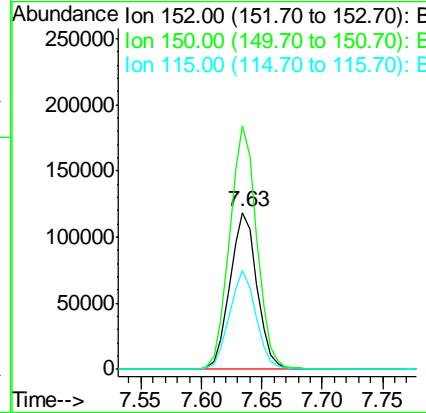
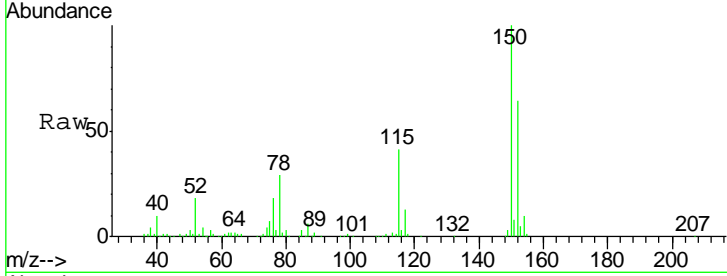




#1  
 1,4-Dichlorobenzene-d4  
 Concen: 20.000 ng  
 RT: 7.63 min Scan# 790  
 Delta R.T. -0.03 min  
 Lab File: BM019258.D  
 Acq: 20 Mar 2019 07:43

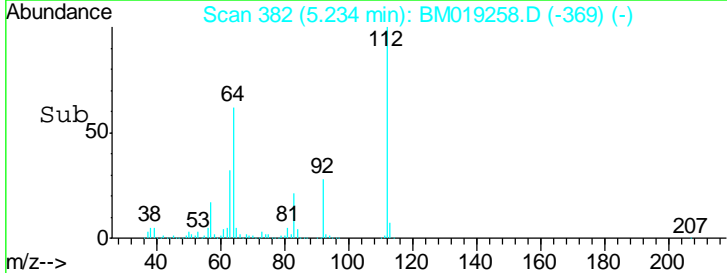
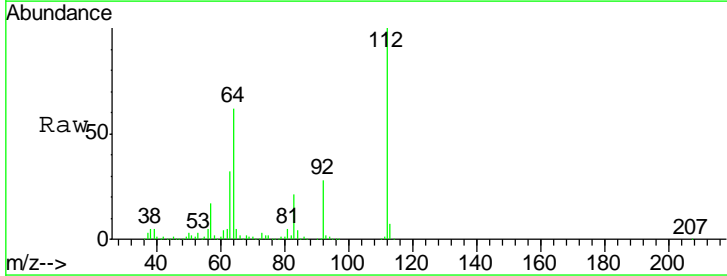
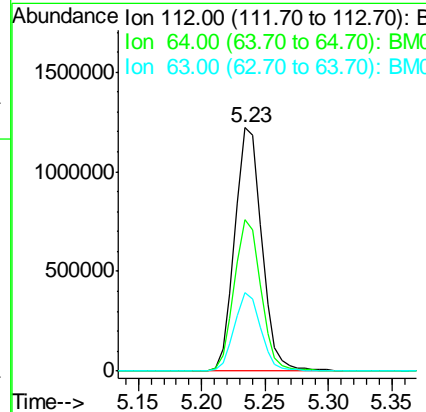
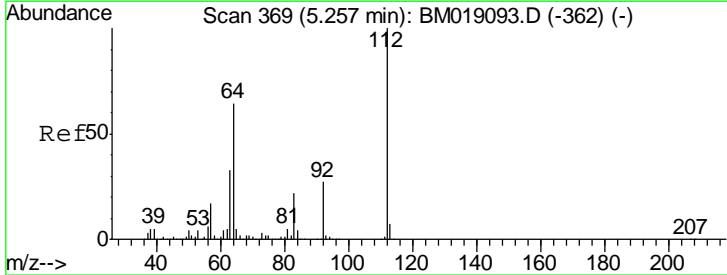
**Instrument :**  
 BNA\_M  
**ClientSampleId :**  
 INV-025-SW03-031319

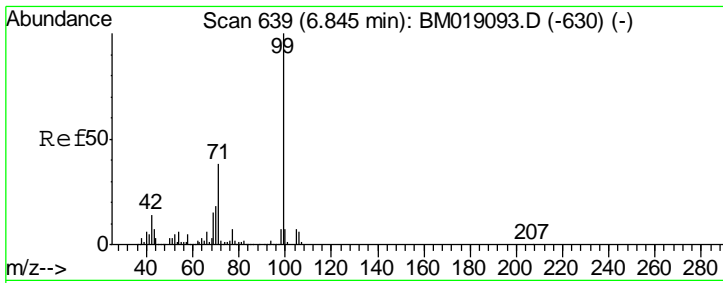
Tgt Ion	Resp	Lower	Upper
152	184990		
150	155.2	125.3	187.9
115	63.0	49.4	74.0



#5  
 2-Fluorophenol  
 Concen: 157.479 ng  
 RT: 5.23 min Scan# 382  
 Delta R.T. -0.02 min  
 Lab File: BM019258.D  
 Acq: 20 Mar 2019 07:43

Tgt Ion	Resp	Lower	Upper
112	1798851		
64	62.1	51.4	77.0
63	32.1	26.6	40.0

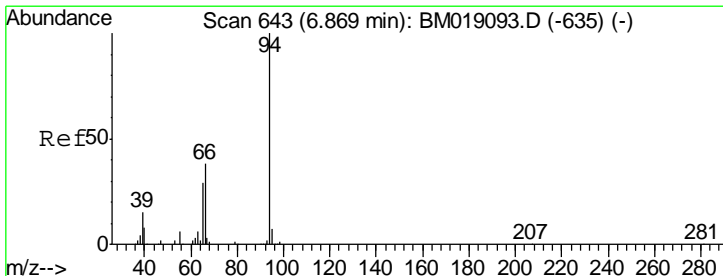
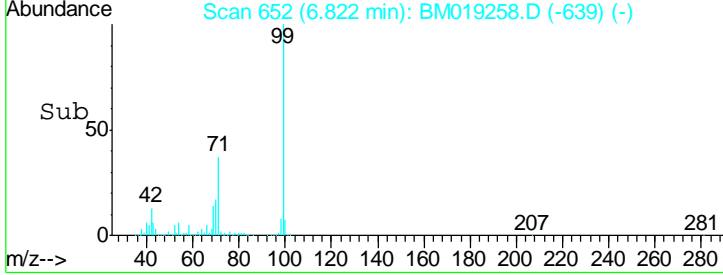
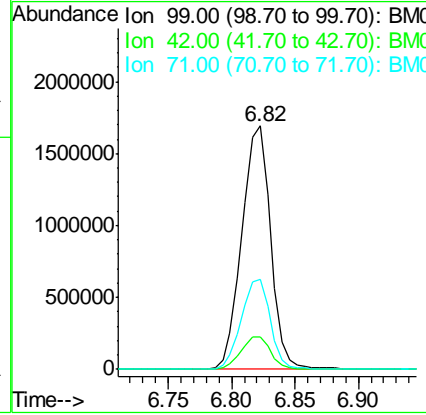
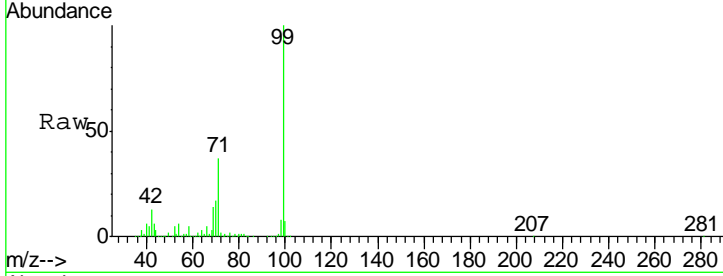




#7  
 Phenol-d6  
 Concen: 159.908 ng  
 RT: 6.82 min Scan# 652  
 Delta R.T. -0.02 min  
 Lab File: BM019258.D  
 Acq: 20 Mar 2019 07:43

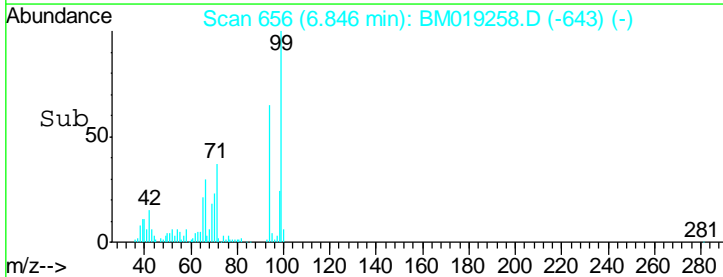
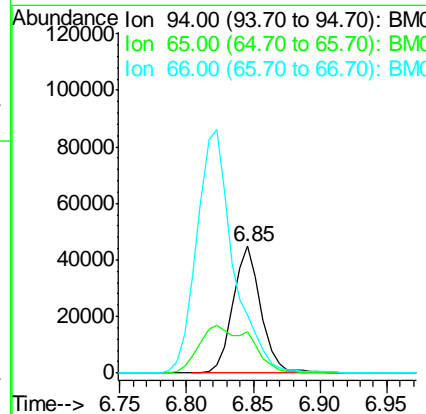
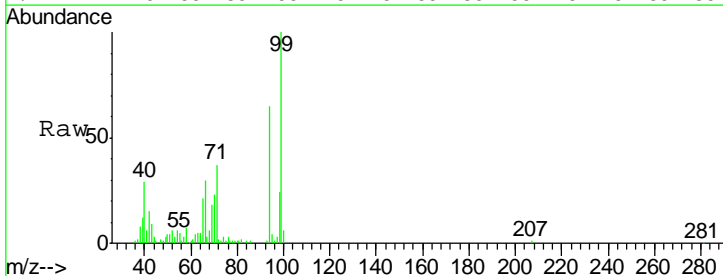
**Instrument :**  
 BNA\_M  
**ClientSampled :**  
 INV-025-SW03-031319

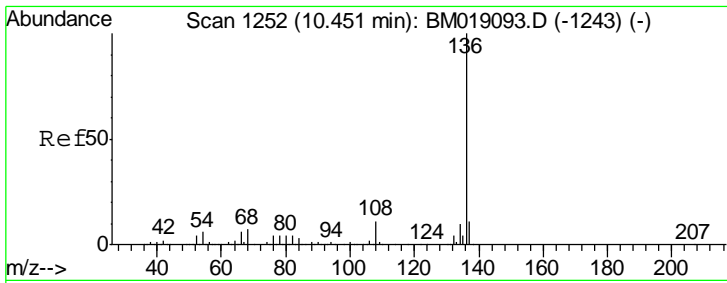
Tgt Ion	Resp	Lower	Upper
99	100		
42	13.3	10.9	16.3
71	36.9	30.3	45.5



#10  
 Phenol  
 Concen: 3.669 ng  
 RT: 6.85 min Scan# 656  
 Delta R.T. -0.02 min  
 Lab File: BM019258.D  
 Acq: 20 Mar 2019 07:43

Tgt Ion	Resp	Lower	Upper
94	100		
65	32.9	9.7	49.7
66	46.0	19.2	59.2



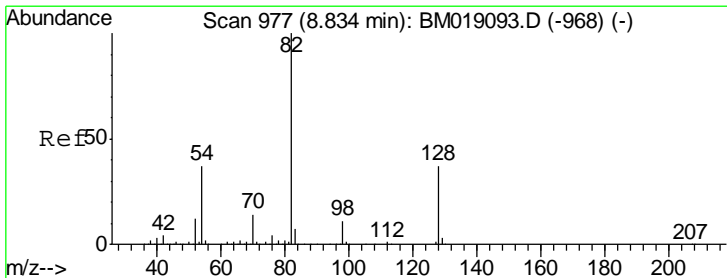
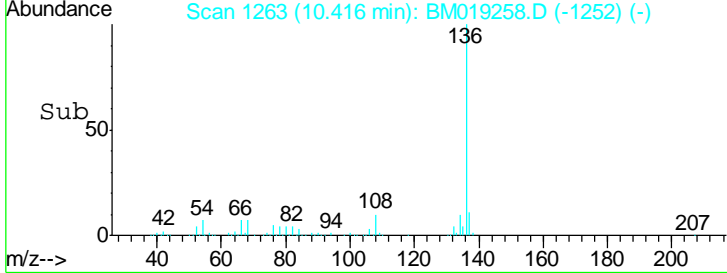
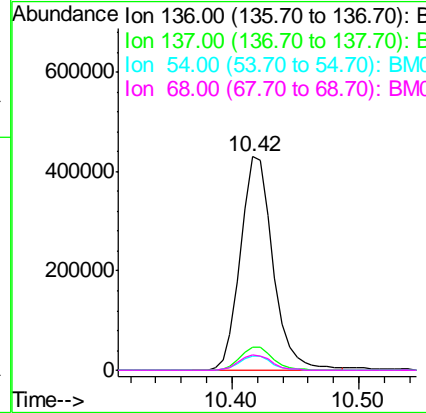
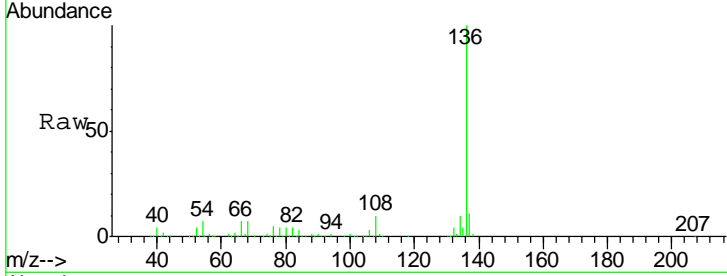


#21  
 Naphthalene-d8  
 Concen: 20.000 ng  
 RT: 10.42 min Scan# 1263  
 Delta R.T. -0.03 min  
 Lab File: BM019258.D  
 Acq: 20 Mar 2019 07:43

**Instrument :**  
 BNA\_M  
**ClientSampled :**  
 INV-025-SW03-031319

Tgt Ion: 136 Resp: 767448

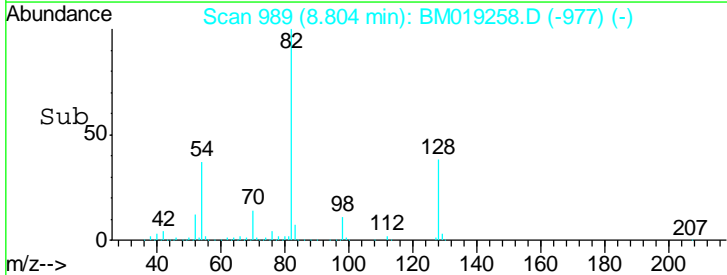
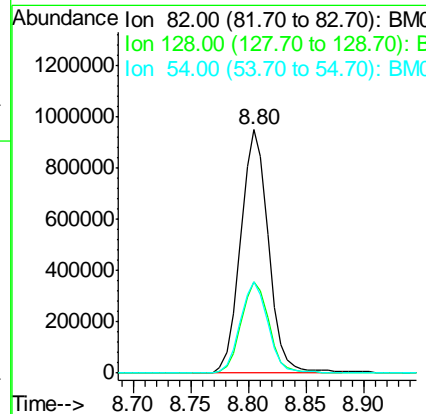
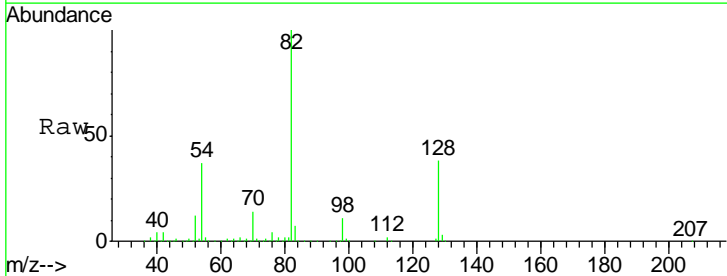
Ion	Ratio	Lower	Upper
136	100		
137	11.0	8.6	13.0
54	6.7	5.2	7.8
68	7.4	5.8	8.8

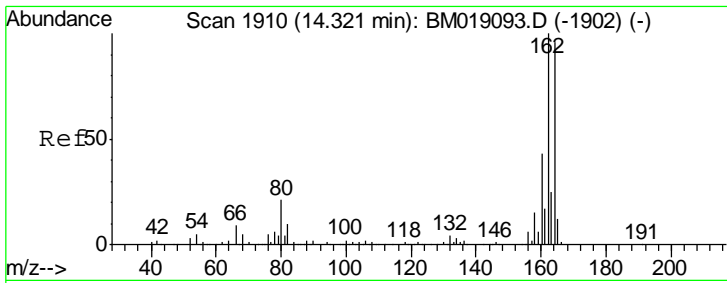


#23  
 Nitrobenzene-d5  
 Concen: 97.650 ng  
 RT: 8.80 min Scan# 989  
 Delta R.T. -0.03 min  
 Lab File: BM019258.D  
 Acq: 20 Mar 2019 07:43

Tgt Ion: 82 Resp: 1585388

Ion	Ratio	Lower	Upper
82	100		
128	37.6	29.4	44.2
54	37.3	29.9	44.9

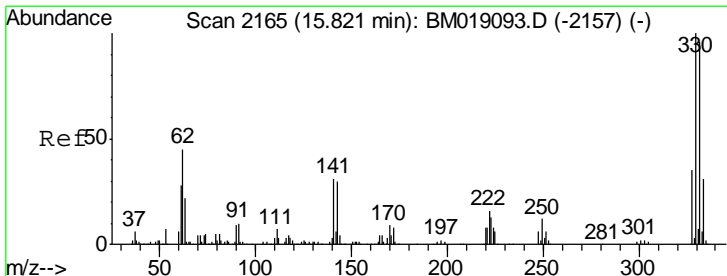
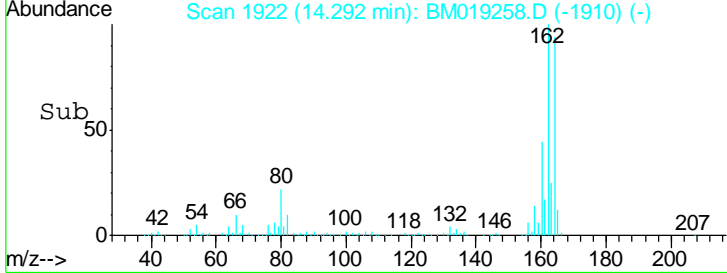
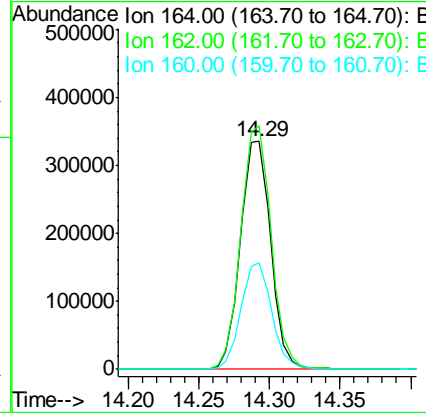
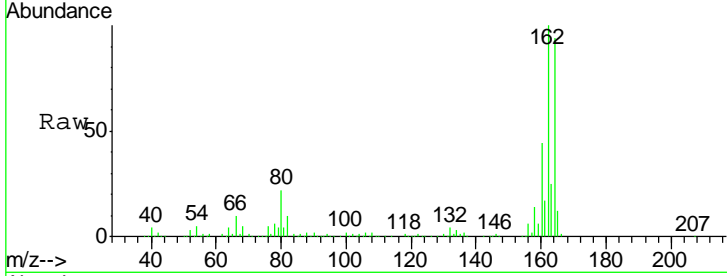




#39  
 Acenaphthene-d10  
 Concen: 20.000 ng  
 RT: 14.29 min Scan# 1922  
 Delta R.T. -0.03 min  
 Lab File: BM019258.D  
 Acq: 20 Mar 2019 07:43

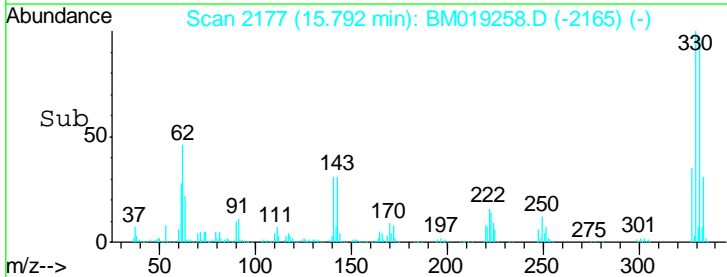
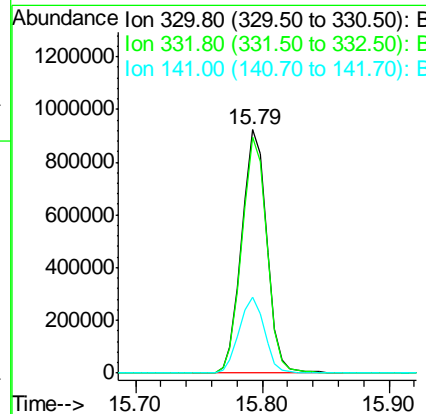
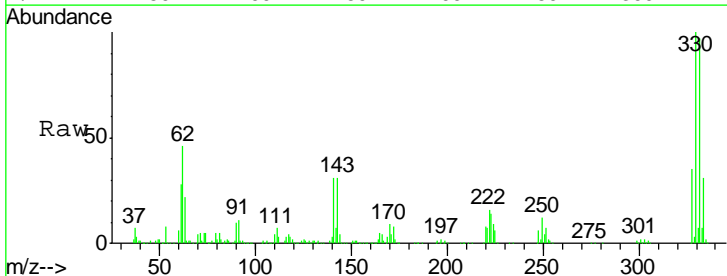
**Instrument :**  
 BNA\_M  
**ClientSampleId :**  
 INV-025-SW03-031319

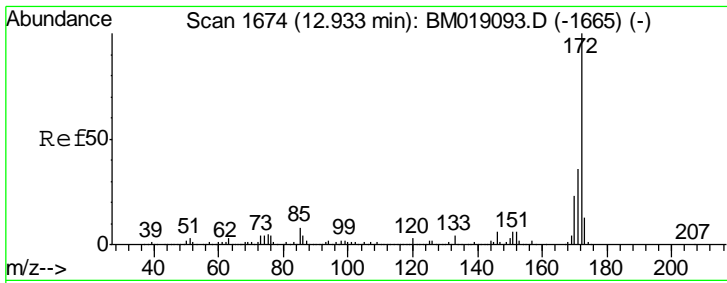
Tgt Ion	Resp	Lower	Upper
164	100		
162	106.9	83.5	125.3
160	46.7	36.3	54.5



#42  
 2,4,6-Tribromophenol  
 Concen: 169.165 ng  
 RT: 15.79 min Scan# 2177  
 Delta R.T. -0.03 min  
 Lab File: BM019258.D  
 Acq: 20 Mar 2019 07:43

Tgt Ion	Resp	Lower	Upper
330	100		
332	96.7	76.8	115.2
141	31.5	27.0	40.4



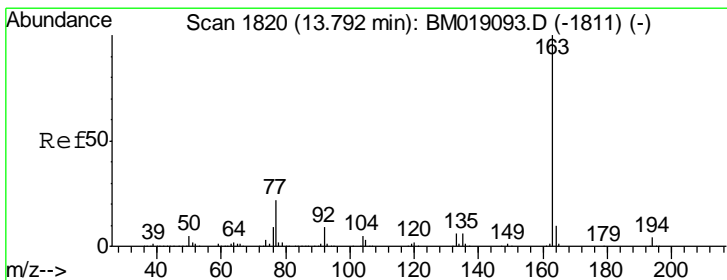
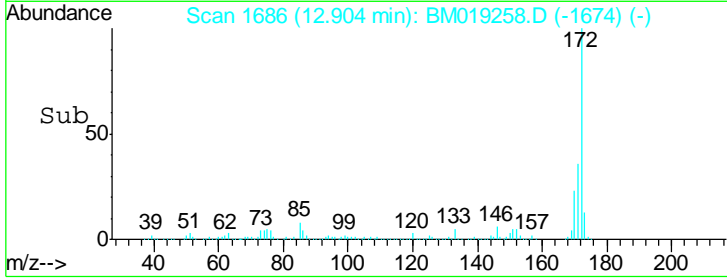
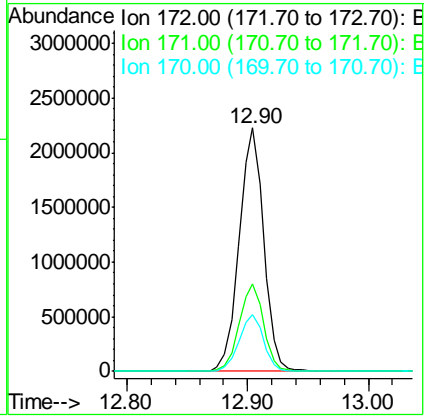
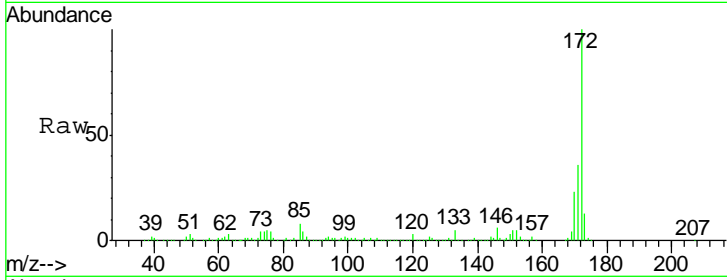


#45  
 2-Fluorobiphenyl  
 Concen: 81.233 ng  
 RT: 12.90 min Scan# 1686  
 Delta R.T. -0.03 min  
 Lab File: BM019258.D  
 Acq: 20 Mar 2019 07:43

Instrument :  
 BNA\_M  
 ClientSampleId :  
 INV-025-SW03-031319

Tgt Ion:172 Resp: 3162989

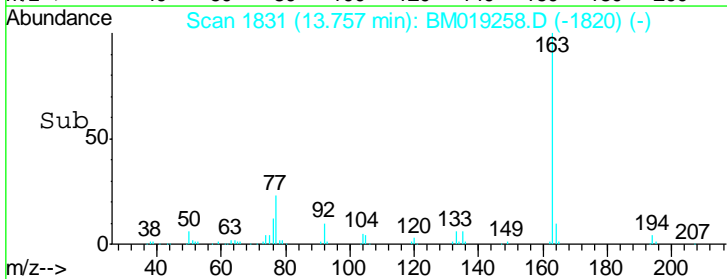
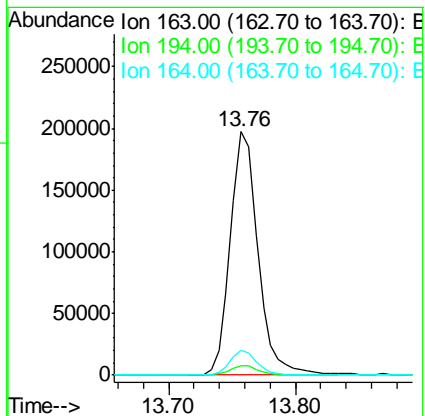
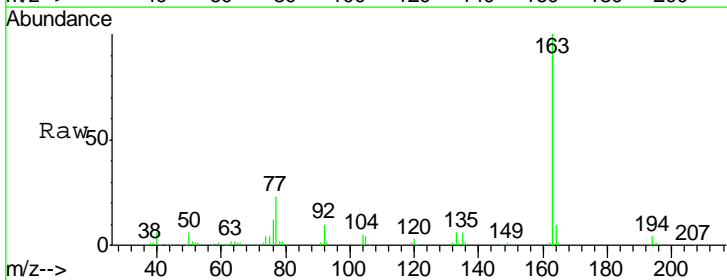
Ion	Ratio	Lower	Upper
172	100		
171	35.9	28.6	42.8
170	23.3	18.6	28.0

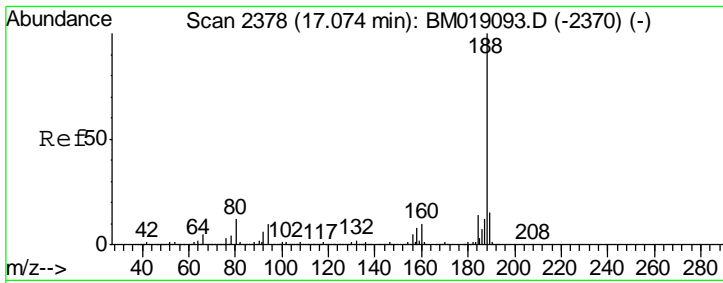


#50  
 Dimethylphthalate  
 Concen: 6.905 ng  
 RT: 13.76 min Scan# 1831  
 Delta R.T. -0.03 min  
 Lab File: BM019258.D  
 Acq: 20 Mar 2019 07:43

Tgt Ion:163 Resp: 299159

Ion	Ratio	Lower	Upper
163	100		
194	4.0	3.3	4.9
164	10.0	7.7	11.5



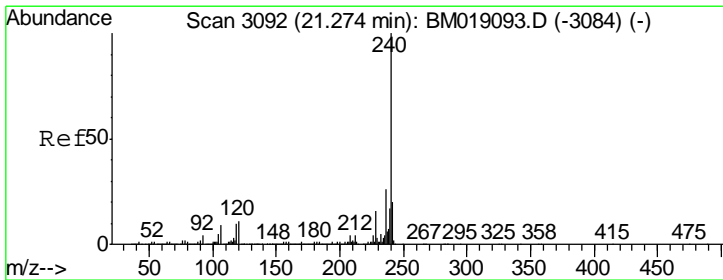
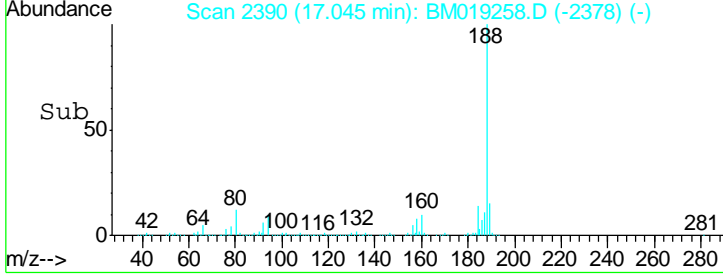
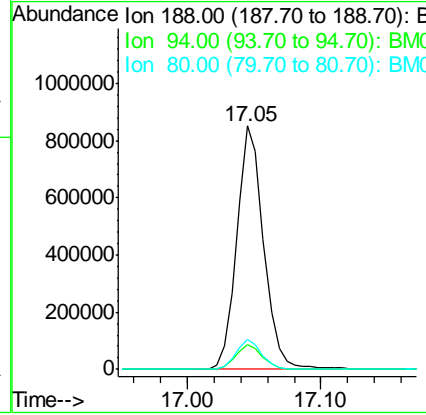
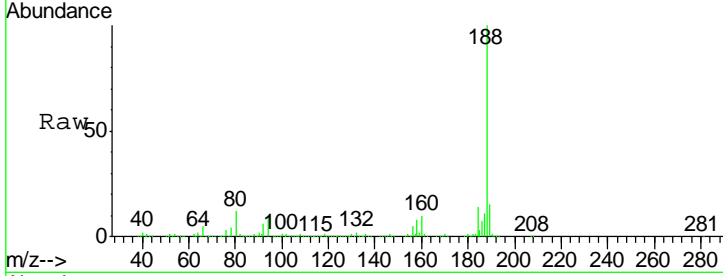


#64  
 Phenanthrene-d10  
 Concen: 20.000 ng  
 RT: 17.05 min Scan# 2390  
 Delta R.T. -0.03 min  
 Lab File: BM019258.D  
 Acq: 20 Mar 2019 07:43

Instrument :  
 BNA\_M  
 ClientSampled :  
 INV-025-SW03-031319

Tgt Ion:188 Resp: 1192690

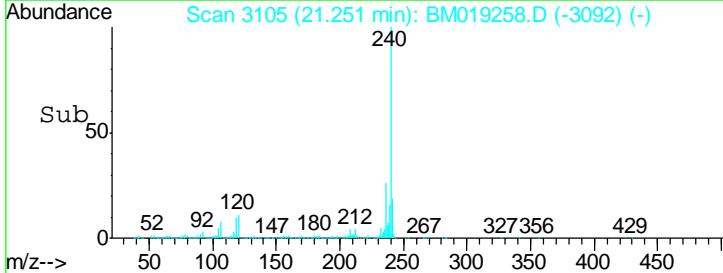
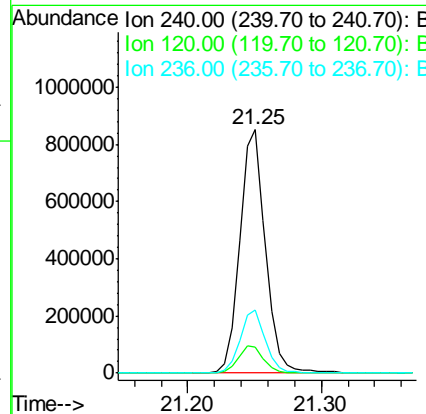
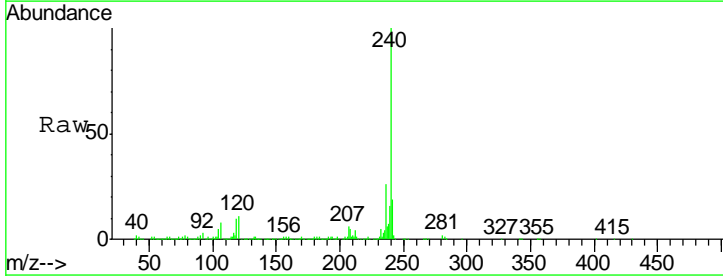
Ion	Ratio	Lower	Upper
188	100		
94	10.0	8.1	12.1
80	12.3	9.7	14.5



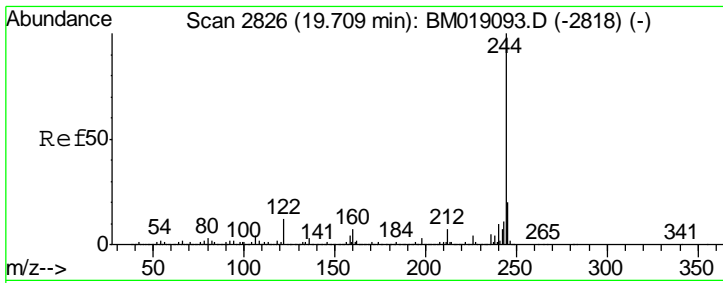
#76  
 Chrysene-d12  
 Concen: 20.000 ng  
 RT: 21.25 min Scan# 3105  
 Delta R.T. -0.02 min  
 Lab File: BM019258.D  
 Acq: 20 Mar 2019 07:43

Tgt Ion:240 Resp: 1132313

Ion	Ratio	Lower	Upper
240	100		
120	10.6	8.9	13.3
236	26.0	21.0	31.4





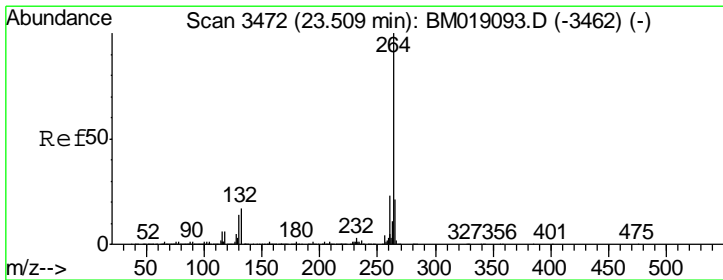
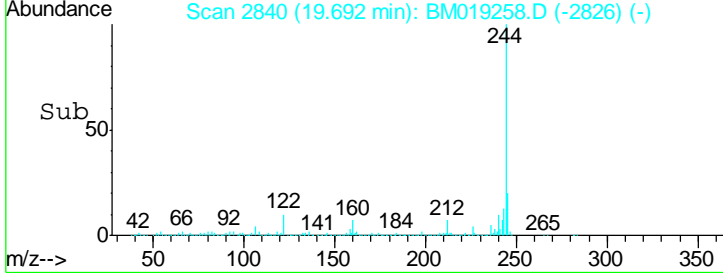
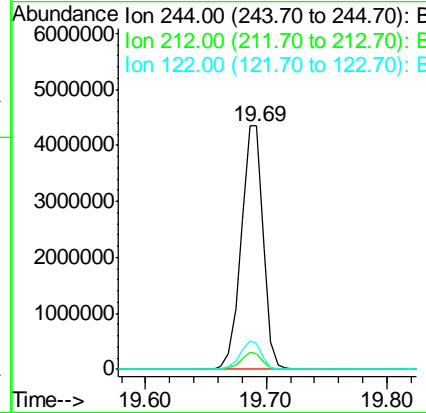
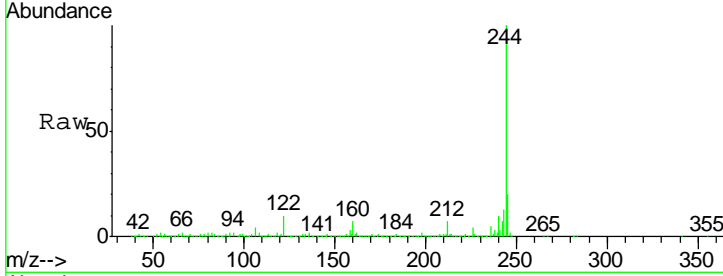


#79  
 Terphenyl-d14  
 Concen: 96.385 ng  
 RT: 19.69 min Scan# 2840  
 Delta R.T. -0.02 min  
 Lab File: BM019258.D  
 Acq: 20 Mar 2019 07:43

**Instrument :**  
 BNA\_M  
**ClientSampleId :**  
 INV-025-SW03-031319

Tgt Ion: 244 Resp: 5497534

Ion	Ratio	Lower	Upper
244	100		
212	6.6	5.4	8.2
122	10.5	9.4	14.2



#87  
 Perylene-d12  
 Concen: 20.000 ng  
 RT: 23.47 min Scan# 3483  
 Delta R.T. -0.03 min  
 Lab File: BM019258.D  
 Acq: 20 Mar 2019 07:43

Tgt Ion: 264 Resp: 1011575

Ion	Ratio	Lower	Upper
264	100		
260	22.8	18.6	28.0
265	21.7	17.3	25.9

