

Data Path : Z:\svoasrv\HPCHEM1\BNA_M\Data\BM032122\
 Data File : BM034287.D
 Acq On : 21 Mar 2022 13:37
 Operator : CG/JU
 Sample : N1870-06DL 5X
 Misc :
 ALS Vial : 5 Sample Multiplier: 1

Instrument :
 BNA_M
 ClientSampleId :
 PT-ACIDS-WPDL

Quant Time: Mar 21 17:55:01 2022
 Quant Method : Z:\svoasrv\HPCHEM1\BNA_M\Methods\8270-BM031522.M
 Quant Title : ASP BNA STANDARDS FOR 5 POINT CALIBRATION
 QLast Update : Wed Mar 16 02:38:26 2022
 Response via : Initial Calibration

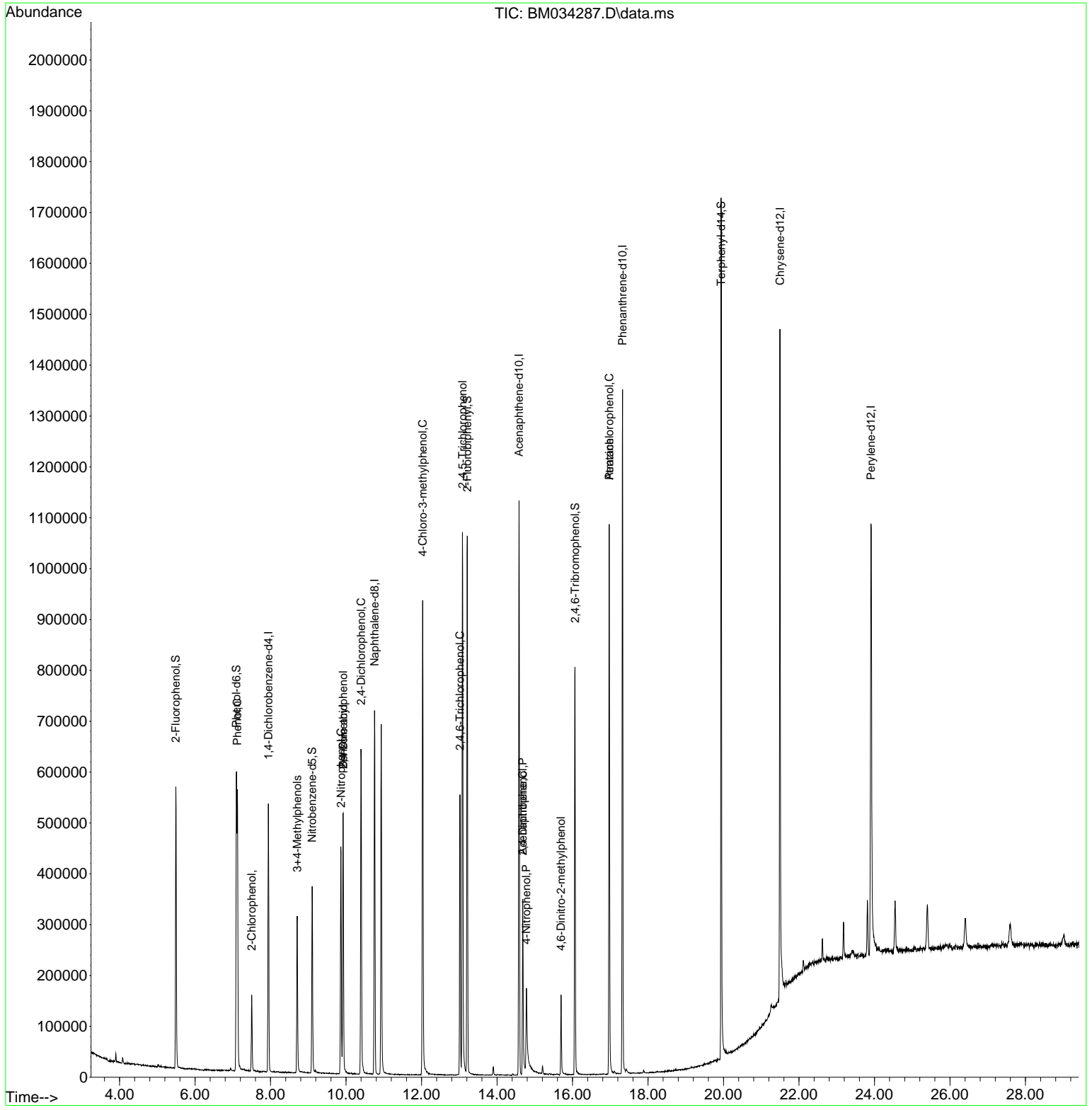
Compound	R.T.	QIon	Response	Conc	Units	Dev(Min)	
Internal Standards							
1) 1,4-Dichlorobenzene-d4	7.942	152	135757	20.000	ng	0.00	
21) Naphthalene-d8	10.754	136	564154	20.000	ng	-0.01	
39) Acenaphthene-d10	14.583	164	369651	20.000	ng	0.00	
64) Phenanthrene-d10	17.324	188	769454	20.000	ng	0.00	
76) Chrysene-d12	21.494	240	765266	20.000	ng	0.00	
86) Perylene-d12	23.906	264	748916	20.000	ng	0.00	
System Monitoring Compounds							
5) 2-Fluorophenol	5.490	112	229574	30.337	ng	-0.01	
7) Phenol-d6	7.095	99	301591	27.835	ng	-0.01	
23) Nitrobenzene-d5	9.101	82	209051	18.041	ng	-0.01	
42) 2,4,6-Tribromophenol	16.065	330	137959	27.689	ng	0.00	
45) 2-Fluorobiphenyl	13.213	172	524117	19.375	ng	0.00	
79) Terphenyl-d14	19.936	244	865859	19.660	ng	-0.01	
Target Compounds							
8) 2-Chlorophenol	7.501	128	59719	6.747	ng		97
10) Phenol	7.119	94	269604	25.019	ng		98
20) 3+4-Methylphenols	8.707	107	134599	12.895	ng		91
26) 2-Nitrophenol	9.866	139	131080	27.322	ng		99
27) 2,4-Dimethylphenol	9.925	122	140546	18.709	ng		98
29) 2,4-Dichlorophenol	10.395	162	219405	25.137	ng		100
32) Benzoic acid	9.925	122	140546	22.624	ng	#	13
36) 4-Chloro-3-methylphenol	12.030	107	315468	31.539	ng		97
43) 2,4,6-Trichlorophenol	13.019	196	116088	15.073	ng		99
44) 2,4,5-Trichlorophenol	13.083	196	274707	33.231	ng		99
52) Acenaphthene	14.683	154	47477	2.090	ng	#	4
54) 2,4-Dinitrophenol	14.683	184	73305	22.673	ng		96
56) 4-Nitrophenol	14.777	139	58543	12.473	ng		97
65) 4,6-Dinitro-2-methylph...	15.695	198	32142	6.424	ng		95
69) Atrazine	16.971	200	32172	3.993	ng	#	36
70) Pentachlorophenol	16.971	266	171714	27.216	ng		99

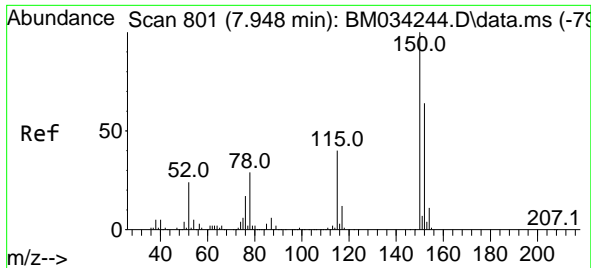
(#) = qualifier out of range (m) = manual integration (+) = signals summed

Data Path : Z:\svoasrv\HPCHEM1\BNA_M\Data\BM032122\
 Data File : BM034287.D
 Acq On : 21 Mar 2022 13:37
 Operator : CG/JU
 Sample : N1870-06DL 5X
 Misc :
 ALS Vial : 5 Sample Multiplier: 1

Instrument :
 BNA_M
ClientSampleId :
 PT-ACIDS-WPDL

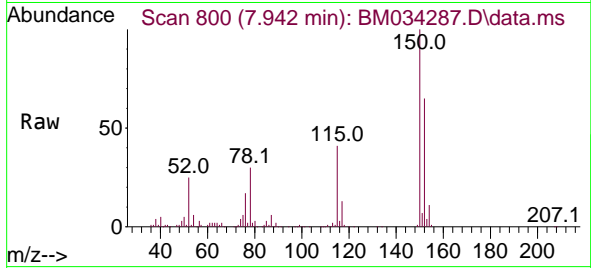
Quant Time: Mar 21 17:55:01 2022
 Quant Method : Z:\svoasrv\HPCHEM1\BNA_M\Methods\8270-BM031522.M
 Quant Title : ASP BNA STANDARDS FOR 5 POINT CALIBRATION
 QLast Update : Wed Mar 16 02:38:26 2022
 Response via : Initial Calibration



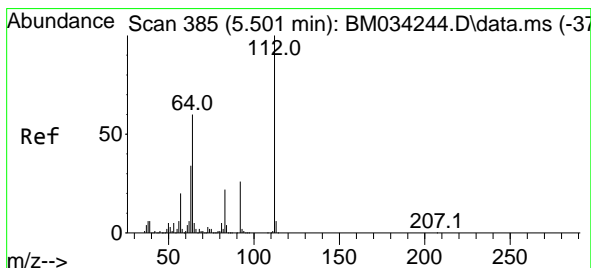
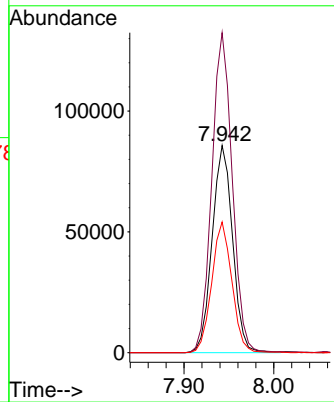
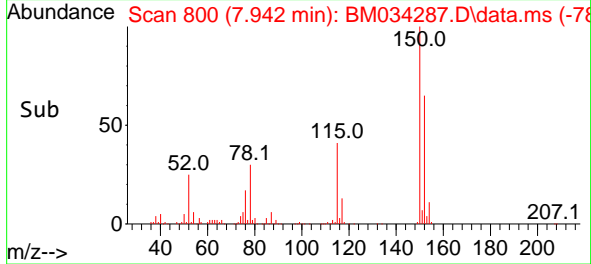


#1
 1,4-Dichlorobenzene-d4
 Concen: 20.000 ng
 RT: 7.942 min Scan# 801
 Delta R.T. -0.006 min
 Lab File: BM034287.D
 Acq: 21 Mar 2022 13:37

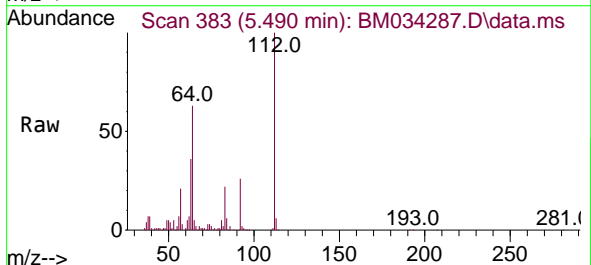
Instrument :
 BNA_M
 ClientSampleId :
 PT-ACIDS-WPDL



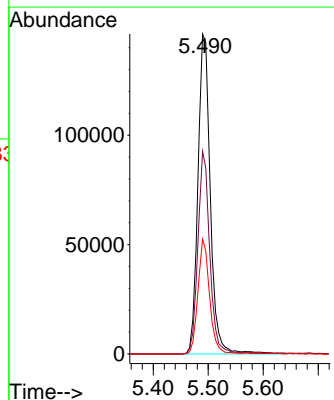
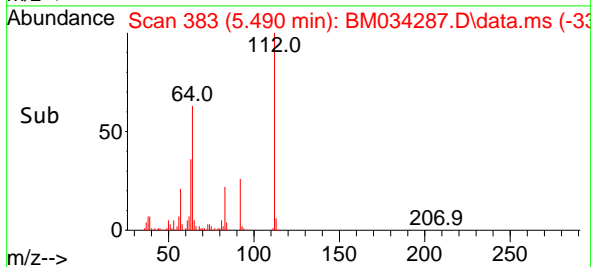
Tgt Ion:152 Resp: 135757
 Ion Ratio Lower Upper
 152 100
 150 154.4 125.4 188.2
 115 63.1 50.1 75.1

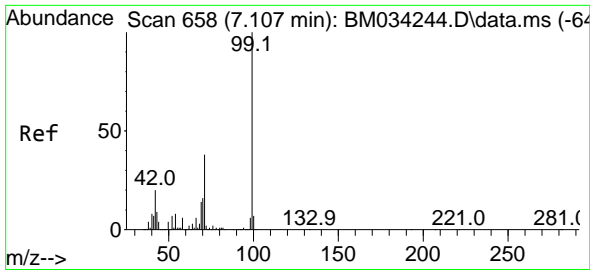


#5
 2-Fluorophenol
 Concen: 30.337 ng
 RT: 5.490 min Scan# 383
 Delta R.T. -0.012 min
 Lab File: BM034287.D
 Acq: 21 Mar 2022 13:37



Tgt Ion:112 Resp: 229574
 Ion Ratio Lower Upper
 112 100
 64 63.4 47.9 71.9
 63 35.9 27.1 40.7



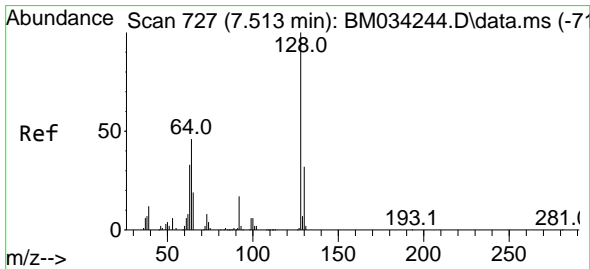
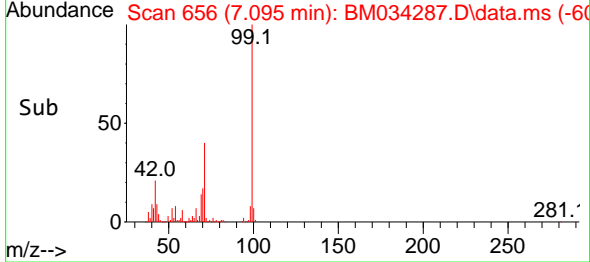
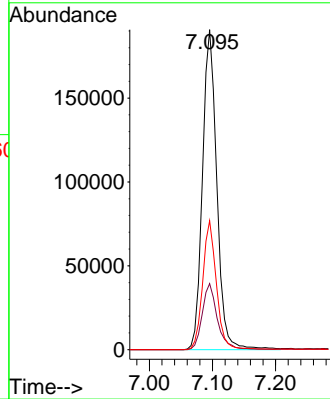
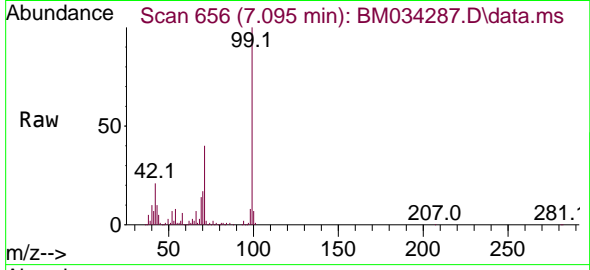


#7
 Phenol-d6
 Concen: 27.835 ng
 RT: 7.095 min Scan# 61
 Delta R.T. -0.012 min
 Lab File: BM034287.D
 Acq: 21 Mar 2022 13:37

Instrument :
 BNA_M
 ClientSampleId :
 PT-ACIDS-WPDL

Tgt Ion: 99 Resp: 301591

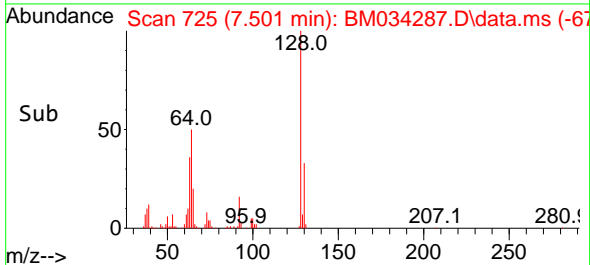
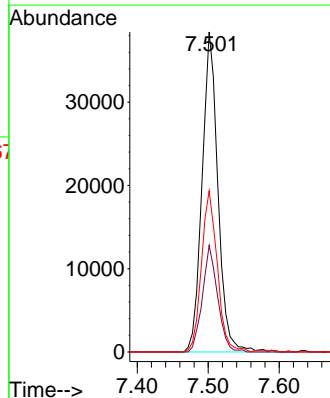
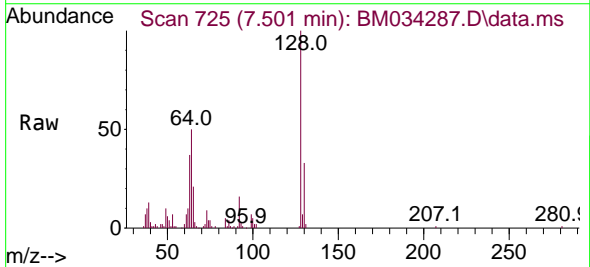
Ion	Ratio	Lower	Upper
99	100		
42	20.6	15.6	23.4
71	40.3	30.6	46.0

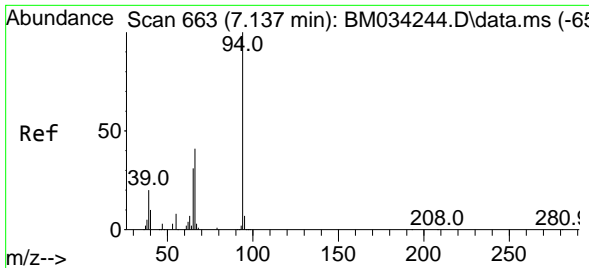


#8
 2-Chlorophenol
 Concen: 6.747 ng
 RT: 7.501 min Scan# 725
 Delta R.T. -0.012 min
 Lab File: BM034287.D
 Acq: 21 Mar 2022 13:37

Tgt Ion: 128 Resp: 59719

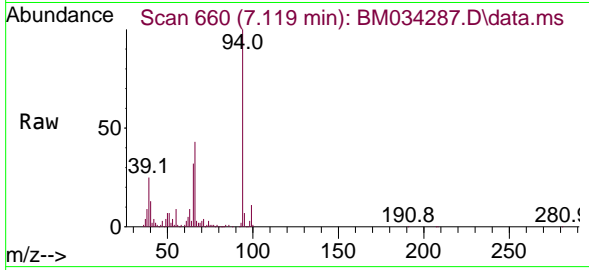
Ion	Ratio	Lower	Upper
128	100		
130	33.3	12.3	52.3
64	50.4	28.1	68.1





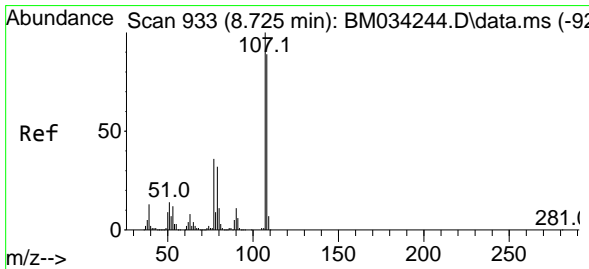
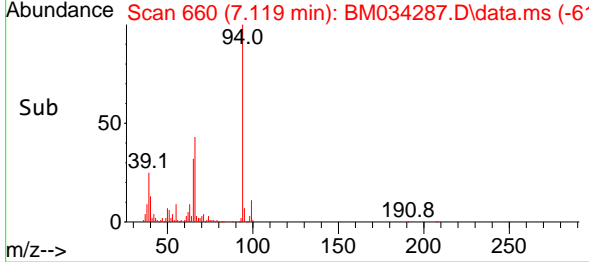
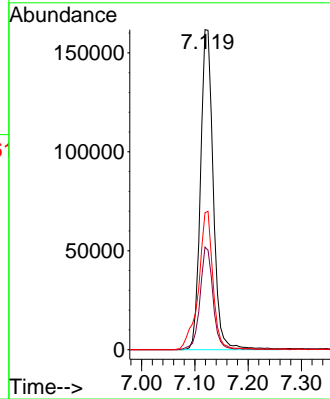
#10
Phenol
Concen: 25.019 ng
RT: 7.119 min Scan# 60
Delta R.T. -0.018 min
Lab File: BM034287.D
Acq: 21 Mar 2022 13:37

Instrument :
BNA_M
ClientSampleId :
PT-ACIDS-WPDL



Tgt Ion: 94 Resp: 269604

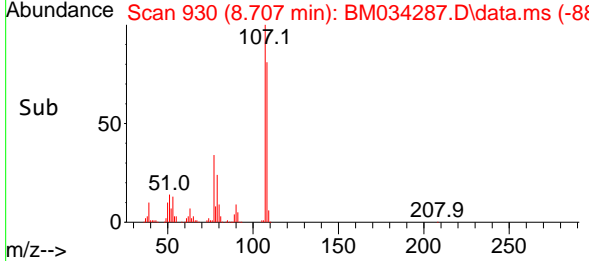
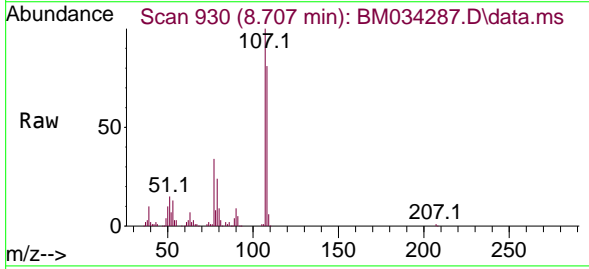
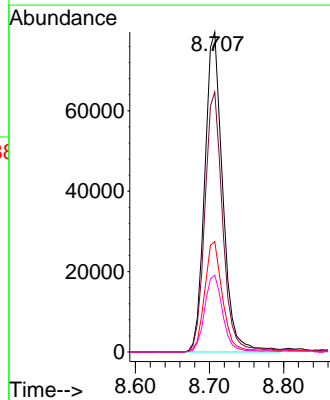
Ion	Ratio	Lower	Upper
94	100		
65	32.1	10.9	50.9
66	42.8	22.0	62.0

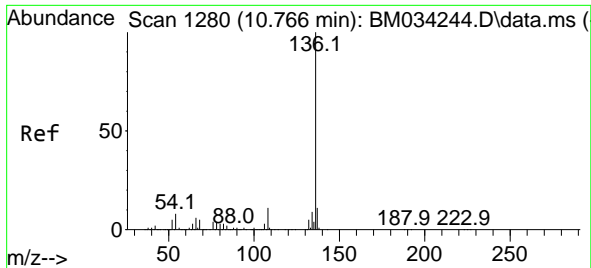


#20
3+4-Methylphenols
Concen: 12.895 ng
RT: 8.707 min Scan# 930
Delta R.T. -0.018 min
Lab File: BM034287.D
Acq: 21 Mar 2022 13:37

Tgt Ion: 107 Resp: 134599

Ion	Ratio	Lower	Upper
107	100		
108	81.2	69.2	109.2
77	34.5	16.5	56.5
79	24.0	12.5	52.5

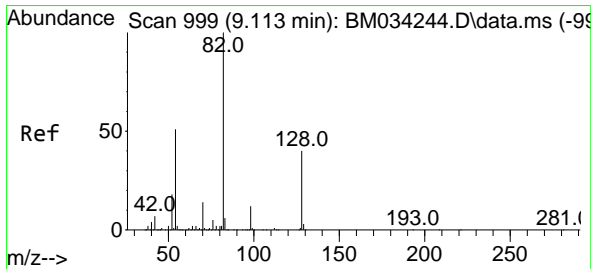
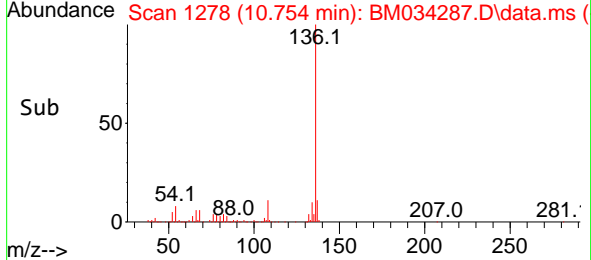
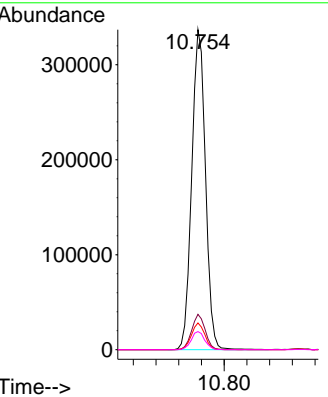
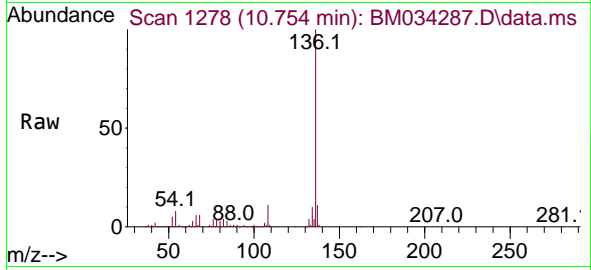




#21
 Naphthalene-d8
 Concen: 20.000 ng
 RT: 10.754 min Scan# 11
 Delta R.T. -0.012 min
 Lab File: BM034287.D
 Acq: 21 Mar 2022 13:37

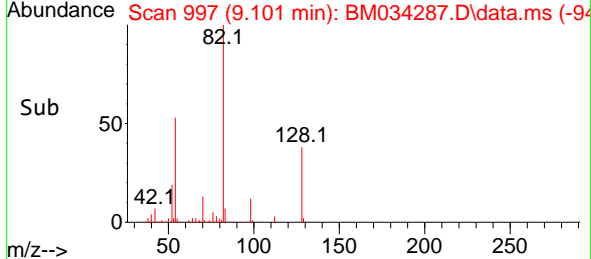
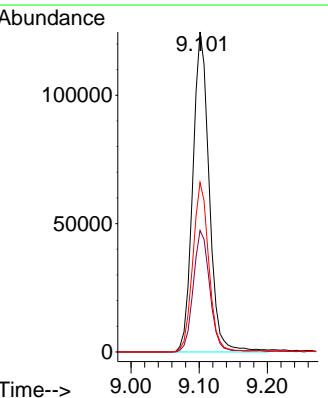
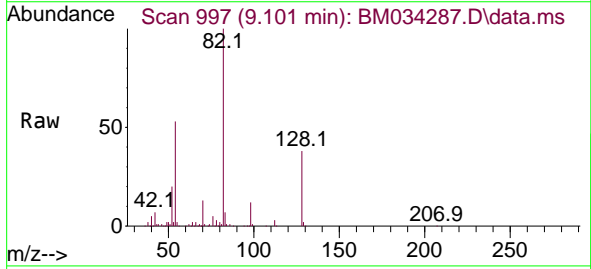
Instrument : BNA_M
 ClientSampleId : PT-ACIDS-WPDL

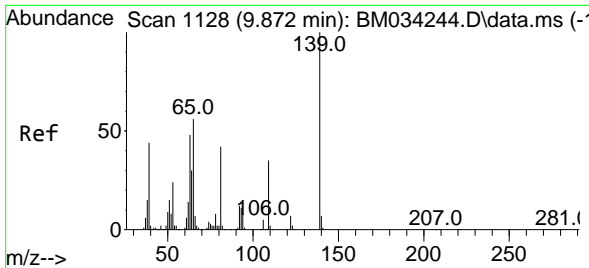
Tgt Ion	Resp	Lower	Upper
136	100		
137	11.1	8.6	13.0
54	8.4	6.2	9.4
68	5.6	4.3	6.5



#23
 Nitrobenzene-d5
 Concen: 18.041 ng
 RT: 9.101 min Scan# 997
 Delta R.T. -0.012 min
 Lab File: BM034287.D
 Acq: 21 Mar 2022 13:37

Tgt Ion	Resp	Lower	Upper
82	100		
128	37.9	31.9	47.9
54	52.9	40.6	61.0



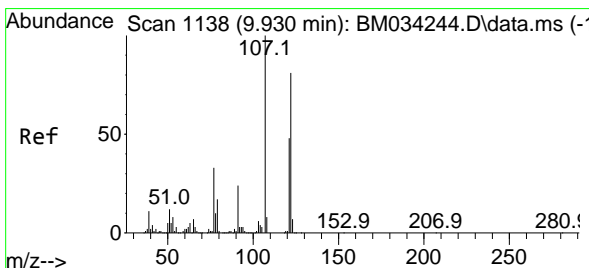
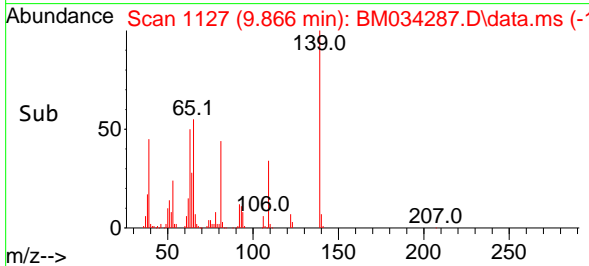
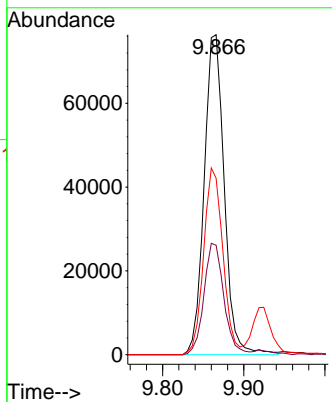
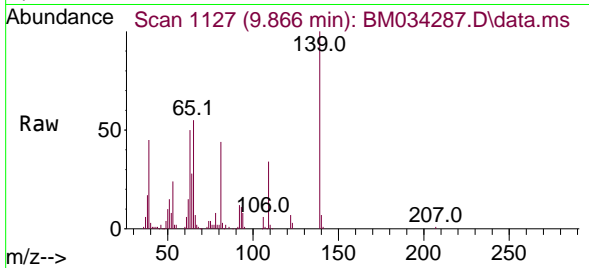


#26
 2-Nitrophenol
 Concen: 27.322 ng
 RT: 9.866 min Scan# 1127
 Delta R.T. -0.006 min
 Lab File: BM034287.D
 Acq: 21 Mar 2022 13:37

Instrument : BNA_M
 ClientSampleId : PT-ACIDS-WPDL

Tgt Ion:139 Resp: 131080

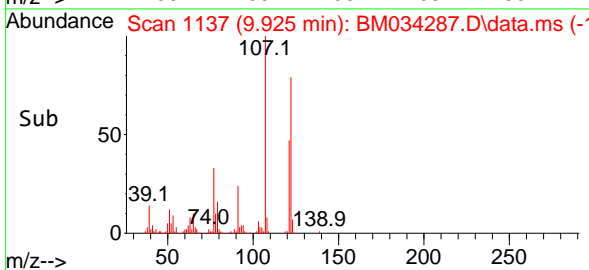
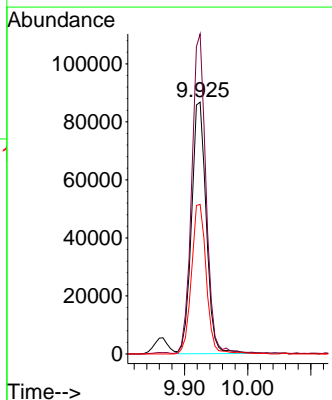
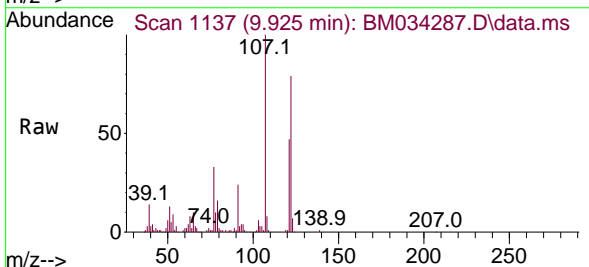
Ion	Ratio	Lower	Upper
139	100		
109	34.2	28.1	42.1
65	55.1	44.6	67.0

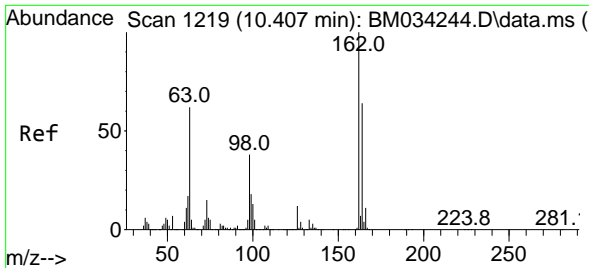


#27
 2,4-Dimethylphenol
 Concen: 18.709 ng
 RT: 9.925 min Scan# 1137
 Delta R.T. -0.006 min
 Lab File: BM034287.D
 Acq: 21 Mar 2022 13:37

Tgt Ion:122 Resp: 140546

Ion	Ratio	Lower	Upper
122	100		
107	127.0	99.0	148.6
121	59.4	47.7	71.5



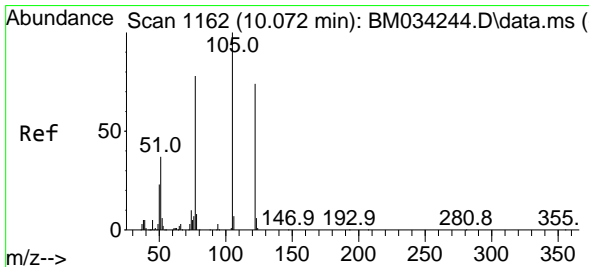
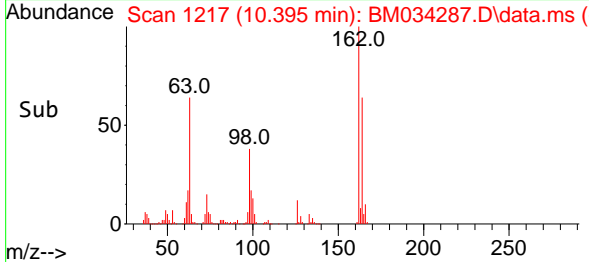
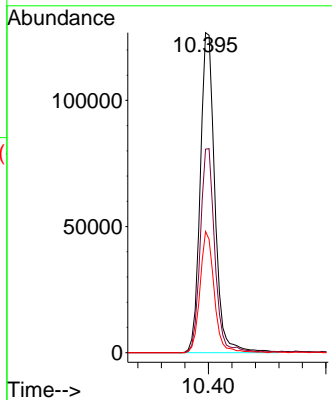
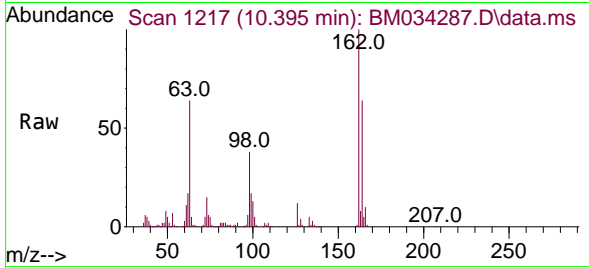


#29
 2,4-Dichlorophenol
 Concen: 25.137 ng
 RT: 10.395 min Scan# 1137
 Delta R.T. -0.012 min
 Lab File: BM034287.D
 Acq: 21 Mar 2022 13:37

Instrument : BNA_M
 ClientSampleId : PT-ACIDS-WPDL

Tgt Ion:162 Resp: 219405

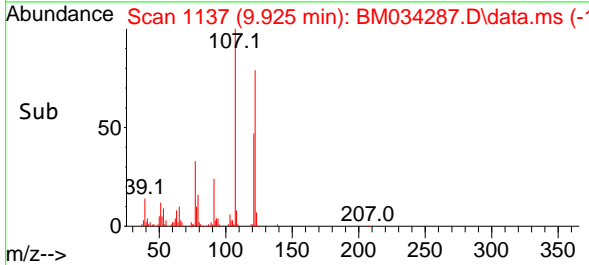
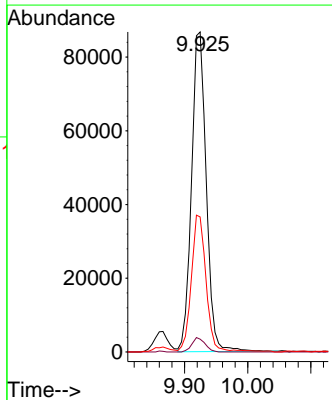
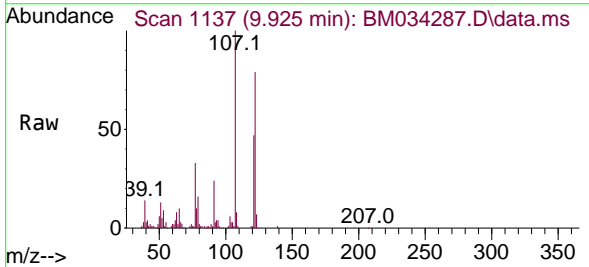
Ion	Ratio	Lower	Upper
162	100		
164	63.6	43.9	83.9
98	37.9	17.6	57.6

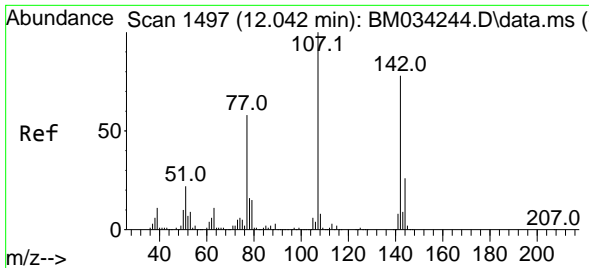


#32
 Benzoic acid
 Concen: 22.624 ng
 RT: 9.925 min Scan# 1137
 Delta R.T. -0.147 min
 Lab File: BM034287.D
 Acq: 21 Mar 2022 13:37

Tgt Ion:122 Resp: 140546

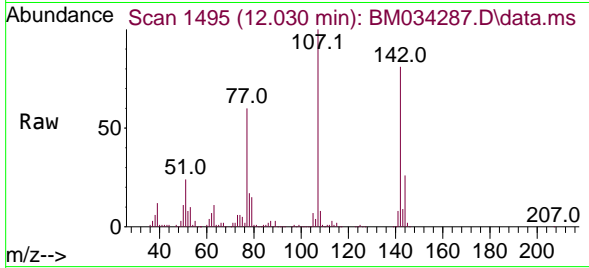
Ion	Ratio	Lower	Upper
122	100		
105	4.0	109.6	149.6#
77	42.2	83.1	123.1#



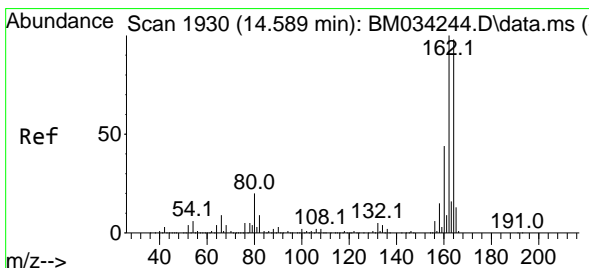
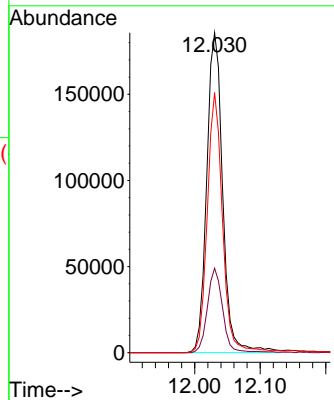
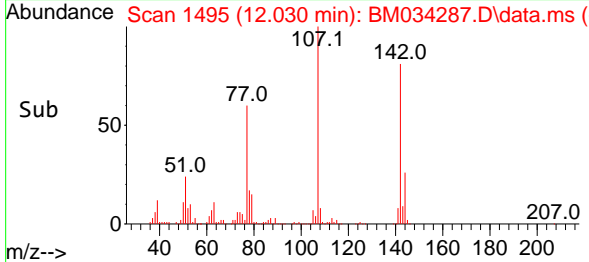


#36
 4-Chloro-3-methylphenol
 Concen: 31.539 ng
 RT: 12.030 min Scan# 14
 Delta R.T. -0.012 min
 Lab File: BM034287.D
 Acq: 21 Mar 2022 13:37

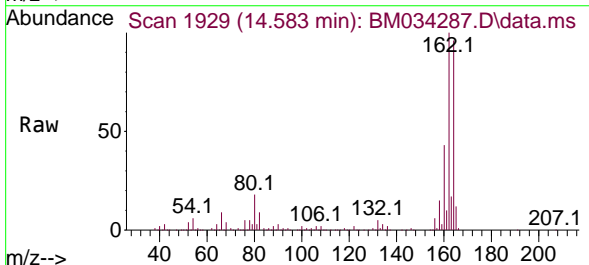
Instrument :
 BNA_M
 ClientSampleId :
 PT-ACIDS-WPDL



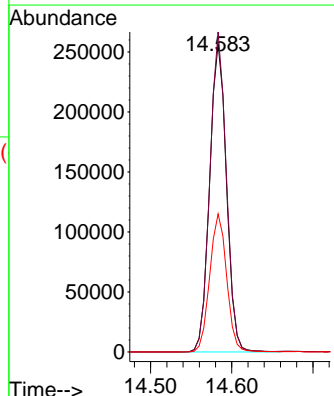
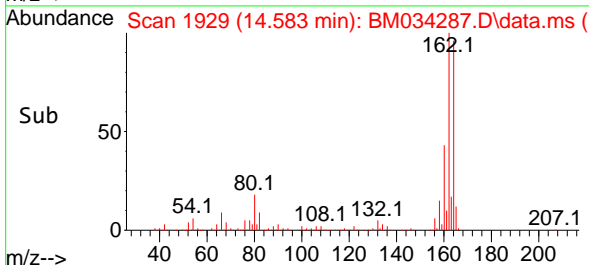
Tgt Ion:107 Resp: 315468
 Ion Ratio Lower Upper
 107 100
 144 26.4 20.8 31.2
 142 81.3 62.7 94.1

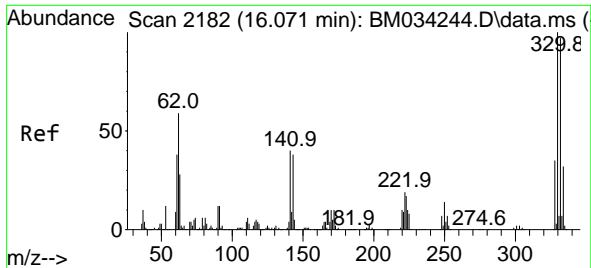


#39
 Acenaphthene-d10
 Concen: 20.000 ng
 RT: 14.583 min Scan# 1929
 Delta R.T. -0.006 min
 Lab File: BM034287.D
 Acq: 21 Mar 2022 13:37



Tgt Ion:164 Resp: 369651
 Ion Ratio Lower Upper
 164 100
 162 103.9 81.6 122.4
 160 44.8 35.6 53.4

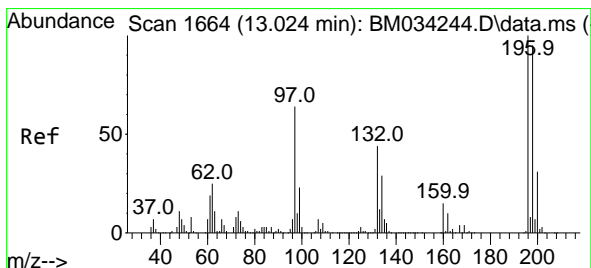
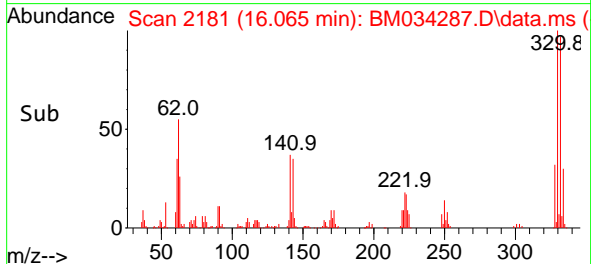
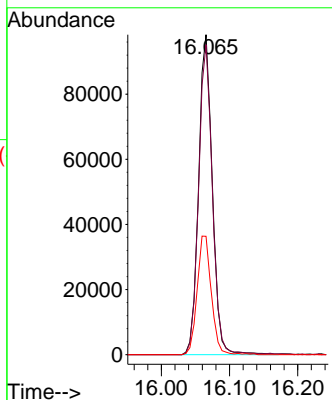
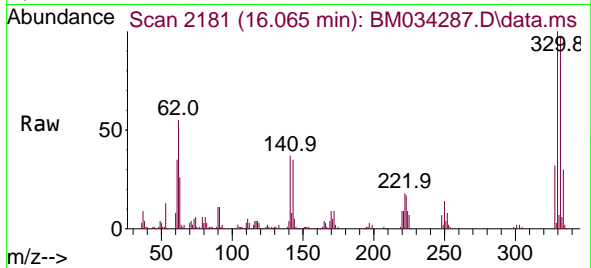




#42
 2,4,6-Tribromophenol
 Concen: 27.689 ng
 RT: 16.065 min Scan# 2181
 Delta R.T. -0.006 min
 Lab File: BM034287.D
 Acq: 21 Mar 2022 13:37

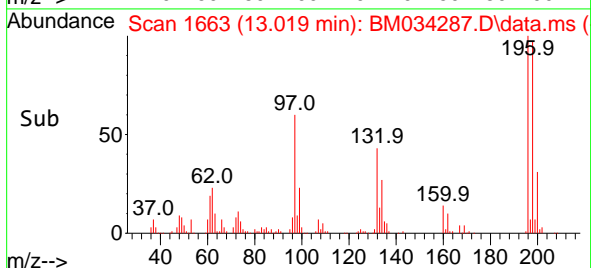
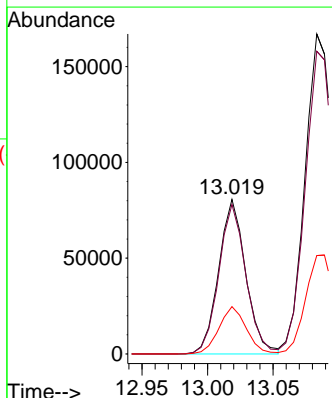
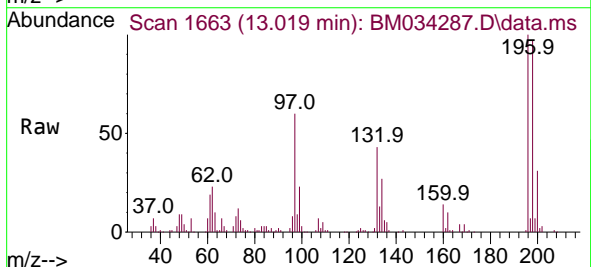
Instrument :
 BNA_M
 ClientSampleId :
 PT-ACIDS-WPDL

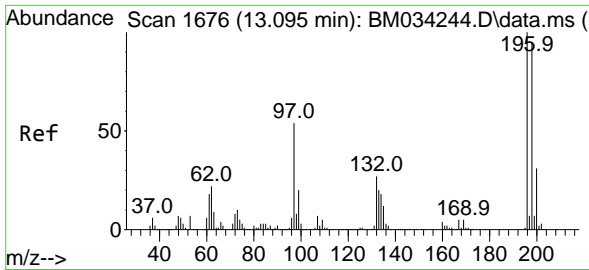
Tgt Ion:330 Resp: 137959
 Ion Ratio Lower Upper
 330 100
 332 96.9 78.2 117.4
 141 38.3 30.6 45.8



#43
 2,4,6-Trichlorophenol
 Concen: 15.073 ng
 RT: 13.019 min Scan# 1663
 Delta R.T. -0.006 min
 Lab File: BM034287.D
 Acq: 21 Mar 2022 13:37

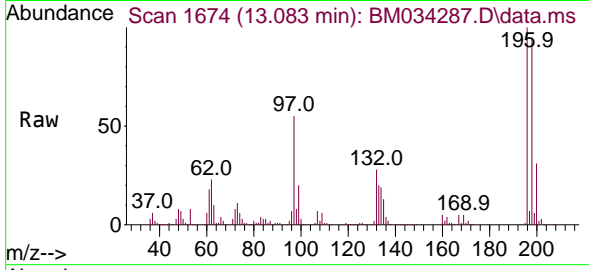
Tgt Ion:196 Resp: 116088
 Ion Ratio Lower Upper
 196 100
 198 96.7 76.1 114.1
 200 30.7 24.9 37.3



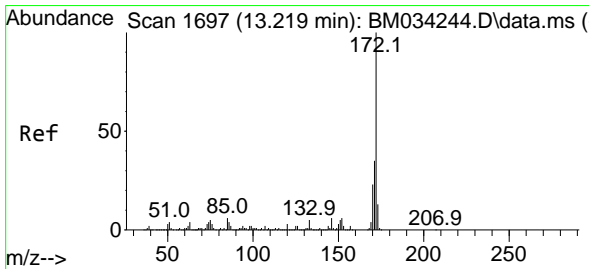
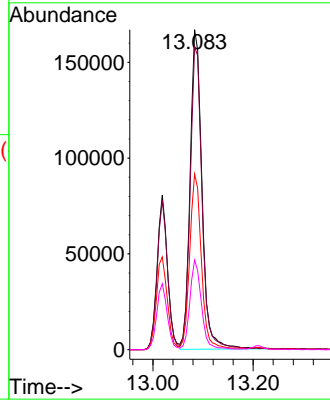
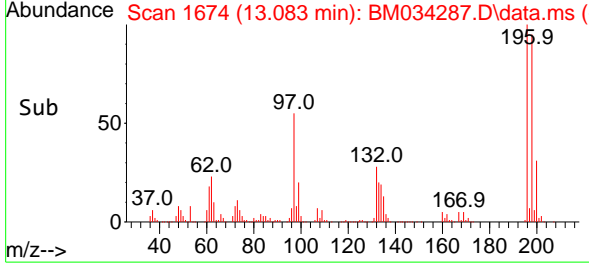


#44
 2,4,5-Trichlorophenol
 Concen: 33.231 ng
 RT: 13.083 min Scan# 1674
 Delta R.T. -0.012 min
 Lab File: BM034287.D
 Acq: 21 Mar 2022 13:37

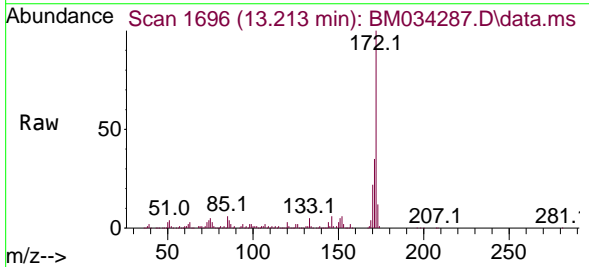
Instrument :
 BNA_M
 ClientSampleId :
 PT-ACIDS-WPDL



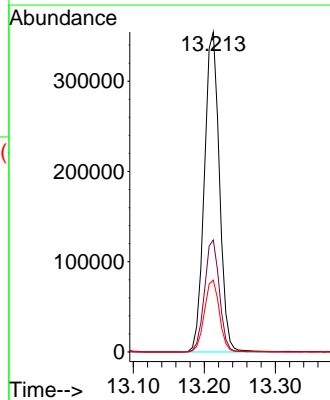
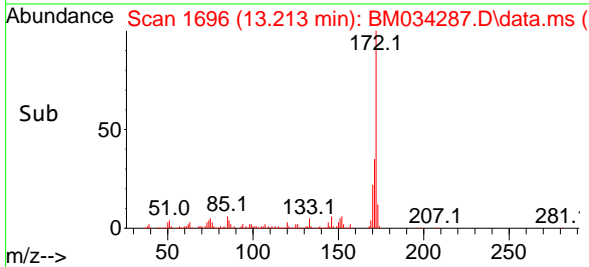
Tgt Ion:196 Resp: 274707
 Ion Ratio Lower Upper
 196 100
 198 94.6 75.9 113.9
 97 54.9 43.2 64.8
 132 28.0 21.5 32.3

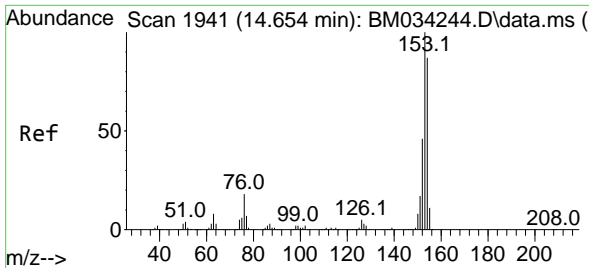


#45
 2-Fluorobiphenyl
 Concen: 19.375 ng
 RT: 13.213 min Scan# 1696
 Delta R.T. -0.006 min
 Lab File: BM034287.D
 Acq: 21 Mar 2022 13:37



Tgt Ion:172 Resp: 524117
 Ion Ratio Lower Upper
 172 100
 171 35.0 28.0 42.0
 170 22.5 18.6 28.0

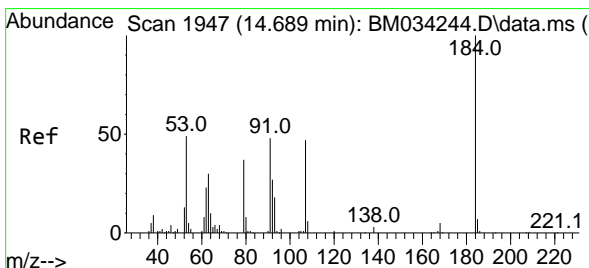
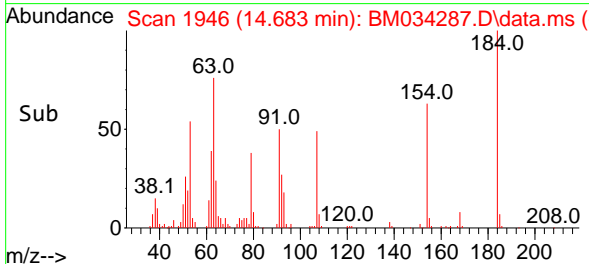
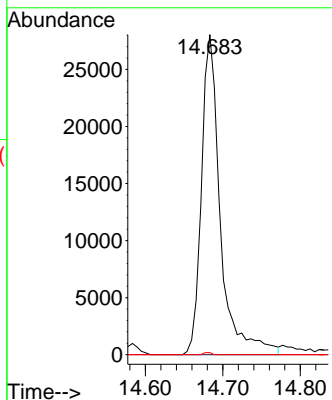
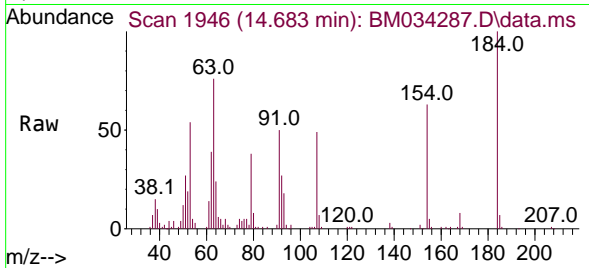




#52
 Acenaphthene
 Concen: 2.090 ng
 RT: 14.683 min Scan# 1946
 Delta R.T. 0.029 min
 Lab File: BM034287.D
 Acq: 21 Mar 2022 13:37

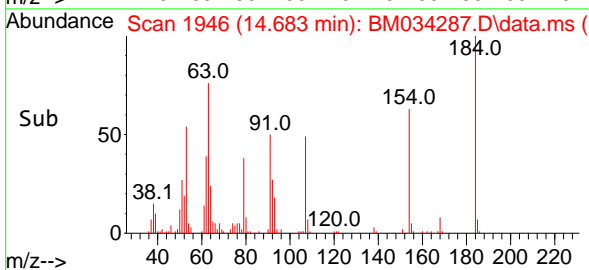
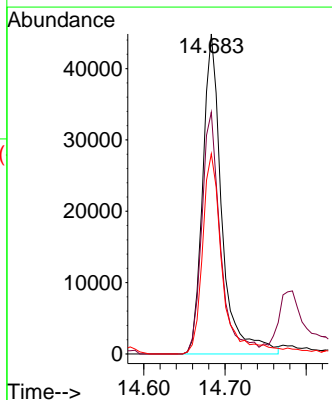
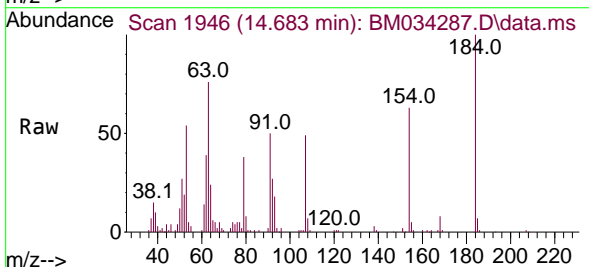
Instrument :
 BNA_M
 ClientSampleId :
 PT-ACIDS-WPDL

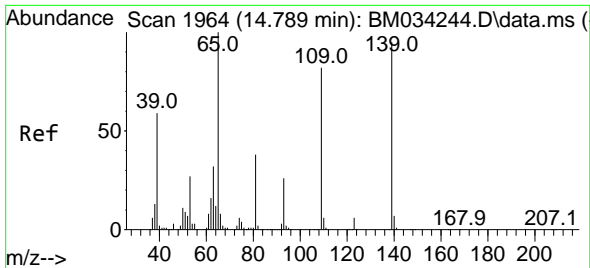
Tgt Ion:154 Resp: 47477
 Ion Ratio Lower Upper
 154 100
 153 0.0 91.8 137.8#
 152 0.7 42.6 64.0#



#54
 2,4-Dinitrophenol
 Concen: 22.673 ng
 RT: 14.683 min Scan# 1946
 Delta R.T. -0.006 min
 Lab File: BM034287.D
 Acq: 21 Mar 2022 13:37

Tgt Ion:184 Resp: 73305
 Ion Ratio Lower Upper
 184 100
 63 75.5 58.3 87.5
 154 62.5 52.6 78.8



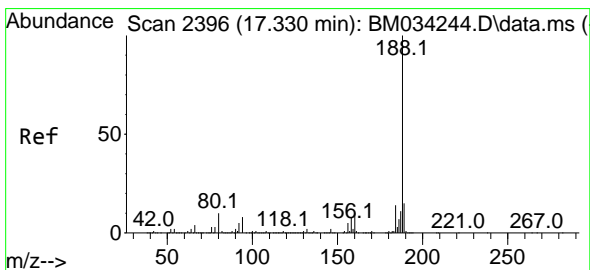
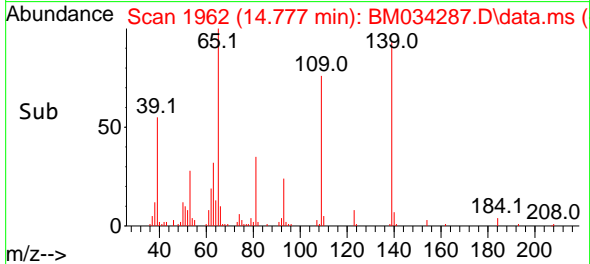
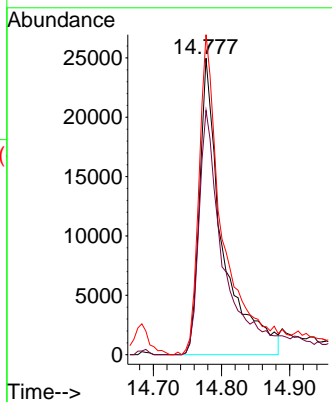
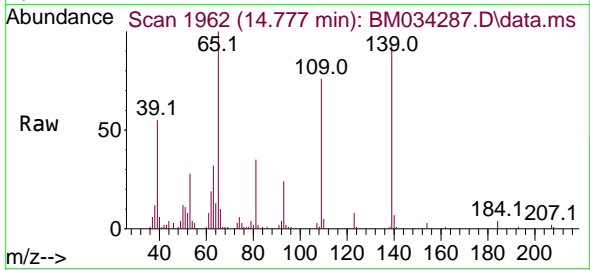


#56
 4-Nitrophenol
 Concen: 12.473 ng
 RT: 14.777 min Scan# 1962
 Delta R.T. -0.012 min
 Lab File: BM034287.D
 Acq: 21 Mar 2022 13:37

Instrument :
 BNA_M
 ClientSampleId :
 PT-ACIDS-WPDL

Tgt Ion:139 Resp: 58543

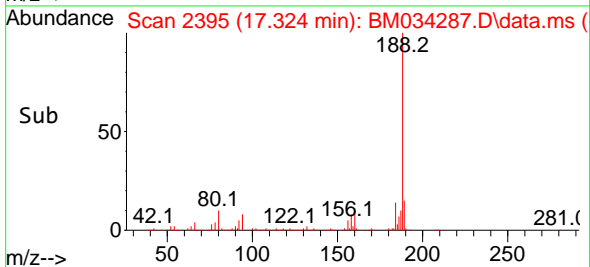
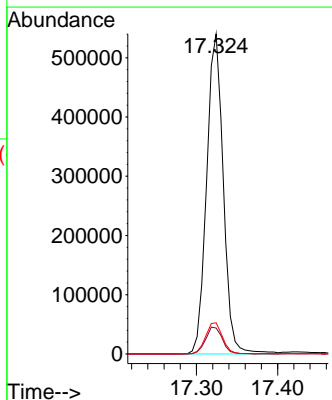
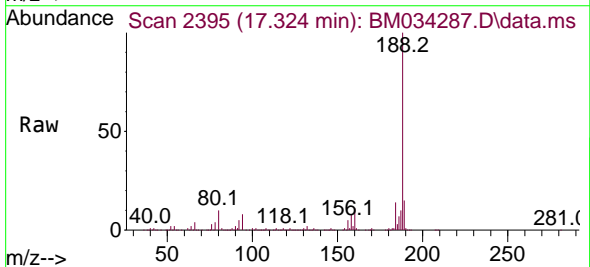
Ion	Ratio	Lower	Upper
139	100		
109	82.4	66.3	106.3
65	107.9	85.5	125.5

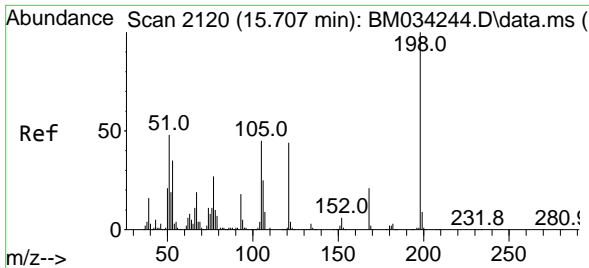


#64
 Phenanthrene-d10
 Concen: 20.000 ng
 RT: 17.324 min Scan# 2395
 Delta R.T. -0.006 min
 Lab File: BM034287.D
 Acq: 21 Mar 2022 13:37

Tgt Ion:188 Resp: 769454

Ion	Ratio	Lower	Upper
188	100		
94	8.1	6.6	9.8
80	9.7	7.8	11.8

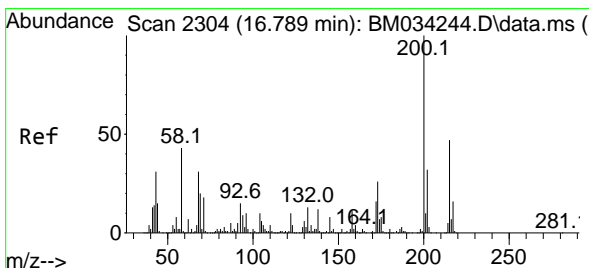
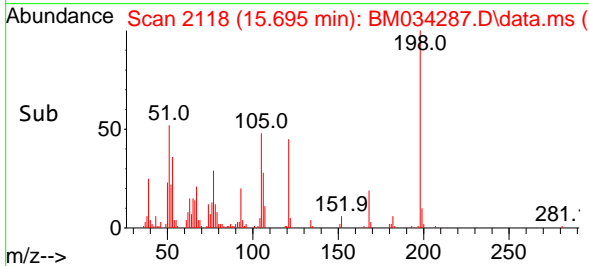
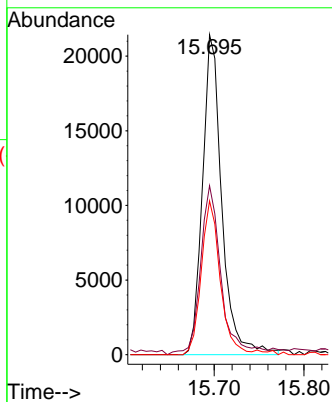
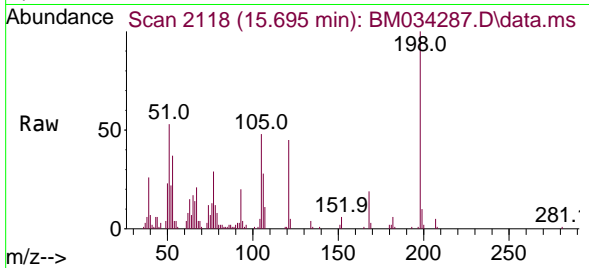




#65
 4,6-Dinitro-2-methylphenol
 Concen: 6.424 ng
 RT: 15.695 min Scan# 2118
 Delta R.T. -0.012 min
 Lab File: BM034287.D
 Acq: 21 Mar 2022 13:37

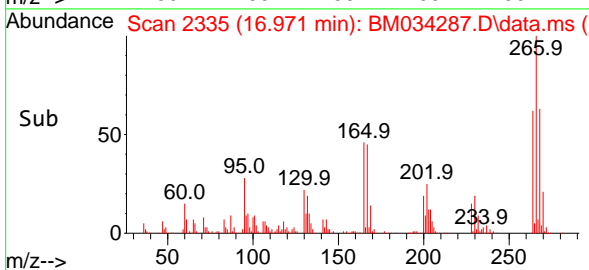
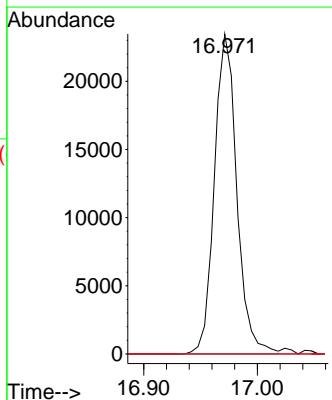
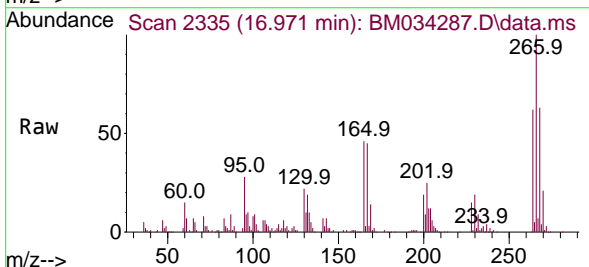
Instrument :
 BNA_M
 ClientSampleId :
 PT-ACIDS-WPDL

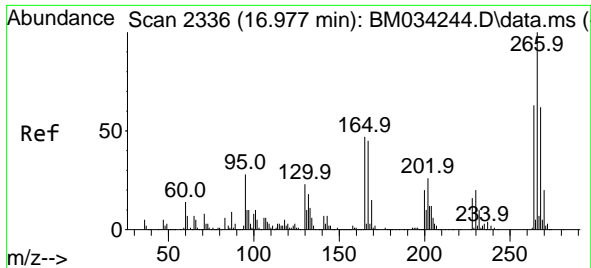
Tgt Ion	Resp	Lower	Upper
198	32142	100	100
51	52.8	29.0	69.0
105	48.1	25.3	65.3



#69
 Atrazine
 Concen: 3.993 ng
 RT: 16.971 min Scan# 2335
 Delta R.T. 0.182 min
 Lab File: BM034287.D
 Acq: 21 Mar 2022 13:37

Tgt Ion	Resp	Lower	Upper
200	32172	100	100
173	0.0	6.1	46.1#
215	0.0	27.4	67.4#

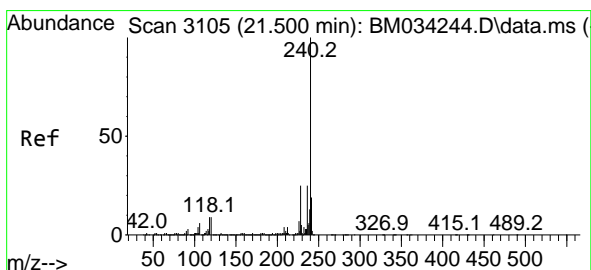
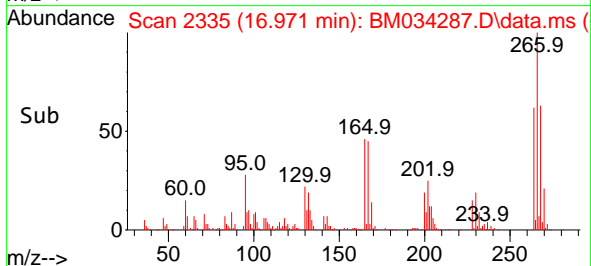
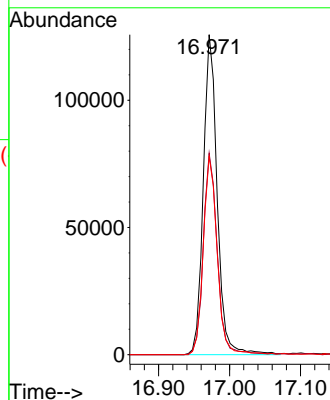
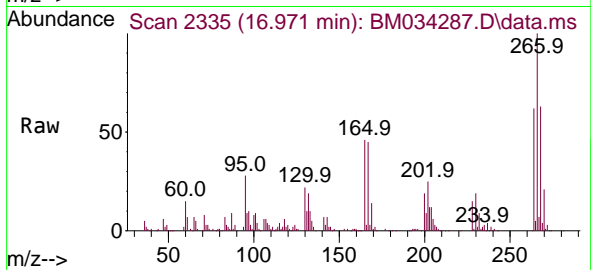




#70
 Pentachlorophenol
 Concen: 27.216 ng
 RT: 16.971 min Scan# 21
 Delta R.T. -0.006 min
 Lab File: BM034287.D
 Acq: 21 Mar 2022 13:37

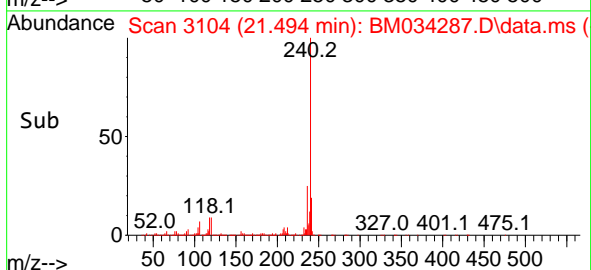
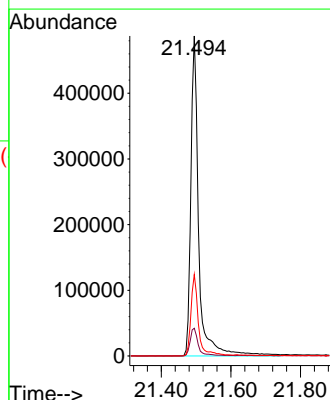
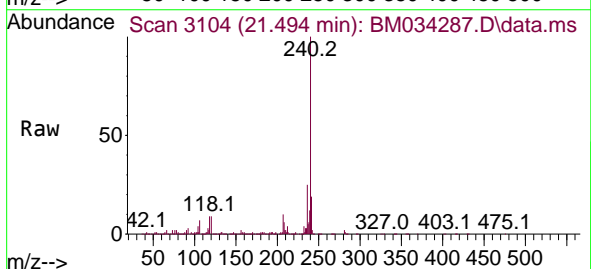
Instrument :
 BNA_M
 ClientSampleId :
 PT-ACIDS-WPDL

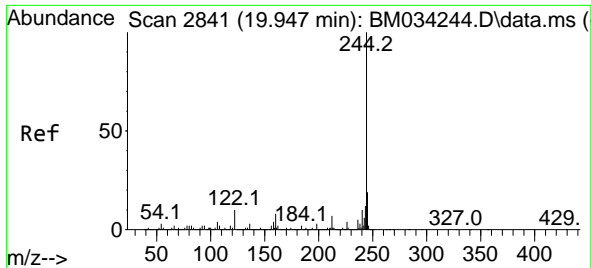
Tgt Ion:266 Resp: 171714
 Ion Ratio Lower Upper
 266 100
 268 62.9 49.8 74.8
 264 62.0 50.3 75.5



#76
 Chrysene-d12
 Concen: 20.000 ng
 RT: 21.494 min Scan# 3104
 Delta R.T. -0.006 min
 Lab File: BM034287.D
 Acq: 21 Mar 2022 13:37

Tgt Ion:240 Resp: 765266
 Ion Ratio Lower Upper
 240 100
 120 8.7 7.3 10.9
 236 25.5 20.2 30.2

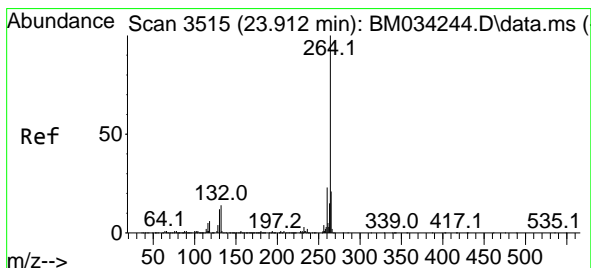
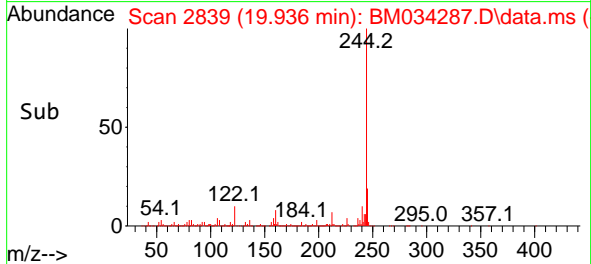
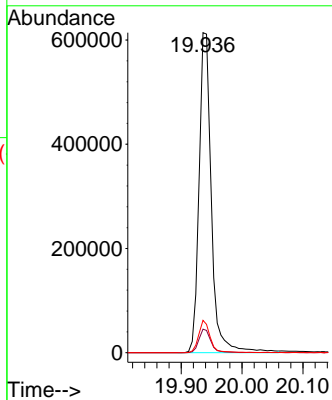
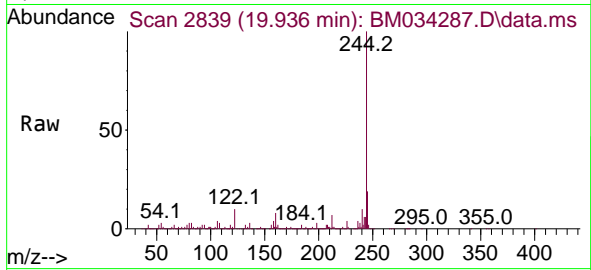




#79
 Terphenyl-d14
 Concen: 19.660 ng
 RT: 19.936 min Scan# 21
 Delta R.T. -0.012 min
 Lab File: BM034287.D
 Acq: 21 Mar 2022 13:37

Instrument :
 BNA_M
 ClientSampleId :
 PT-ACIDS-WPDL

Tgt Ion:244 Resp: 865859
 Ion Ratio Lower Upper
 244 100
 212 7.4 5.9 8.9
 122 10.1 7.8 11.8



#86
 Perylene-d12
 Concen: 20.000 ng
 RT: 23.906 min Scan# 3514
 Delta R.T. -0.006 min
 Lab File: BM034287.D
 Acq: 21 Mar 2022 13:37

Tgt Ion:264 Resp: 748916
 Ion Ratio Lower Upper
 264 100
 260 22.7 18.6 28.0
 265 21.8 17.6 26.4

