

Data Path : Z:\svoasrv\HPCHEM1\BNA_M\Data\BM032322\
 Data File : BM034352.D
 Acq On : 23 Mar 2022 23:09
 Operator : CG/JU
 Sample : N1958-06 5X
 Misc :
 ALS Vial : 14 Sample Multiplier: 1

Instrument :
 BNA_M
 ClientSampleId :
 C-6-5-6

Quant Time: Mar 24 02:44:01 2022
 Quant Method : Z:\svoasrv\HPCHEM1\BNA_M\Methods\8270-BM031522.M
 Quant Title : ASP BNA STANDARDS FOR 5 POINT CALIBRATION
 QLast Update : Thu Mar 24 02:40:59 2022
 Response via : Initial Calibration

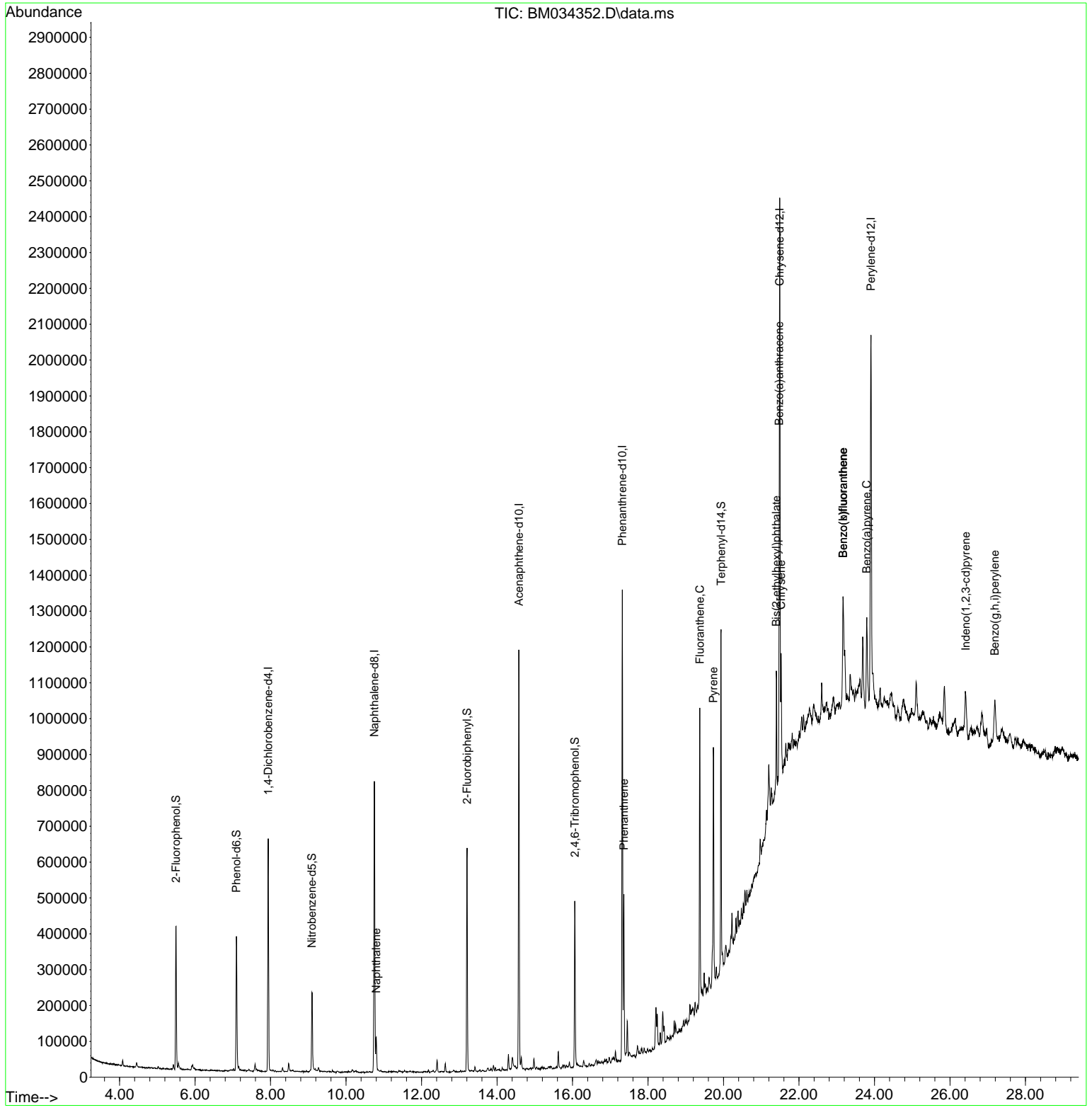
Compound	R.T.	QIon	Response	Conc	Units	Dev(Min)
Internal Standards						
1) 1,4-Dichlorobenzene-d4	7.937	152	168960	20.000	ng	0.00
21) Naphthalene-d8	10.748	136	661402	20.000	ng	0.00
39) Acenaphthene-d10	14.577	164	388352	20.000	ng	0.00
64) Phenanthrene-d10	17.318	188	746654	20.000	ng	0.00
76) Chrysene-d12	21.489	240	718177	20.000	ng	0.00
86) Perylene-d12	23.906	264	812787	20.000	ng	0.00
System Monitoring Compounds						
5) 2-Fluorophenol	5.496	112	169952	18.045	ng	0.00
7) Phenol-d6	7.096	99	214828	15.931	ng	0.00
23) Nitrobenzene-d5	9.095	82	140736	10.360	ng	-0.01
42) 2,4,6-Tribromophenol	16.060	330	81212	15.515	ng	0.00
45) 2-Fluorobiphenyl	13.207	172	317062	11.156	ng	0.00
79) Terphenyl-d14	19.936	244	456399	11.042	ng	0.00
Target Compounds						
31) Naphthalene	10.801	128	75850	2.201	ng	99
71) Phenanthrene	17.360	178	263223	6.295	ng	99
75) Fluoranthene	19.371	202	425566	9.079	ng	98
78) Pyrene	19.730	202	397933	7.864	ng	99
81) Benzo(a)anthracene	21.477	228	200075	4.414	ng	96
83) Chrysene	21.524	228	189595	4.096	ng	97
84) Bis(2-ethylhexyl)phtha...	21.401	149	108673	3.439	ng	# 97
87) Indeno(1,2,3-cd)pyrene	26.418	276	134170	2.566	ng	98
88) Benzo(b)fluoranthene	23.171	252	255500	5.257	ng	# 95
89) Benzo(k)fluoranthene	23.171	252	255500	4.963	ng	# 94
90) Benzo(a)pyrene	23.794	252	190991	4.635	ng	# 93
92) Benzo(g,h,i)perylene	27.188	276	145373	3.313	ng	95

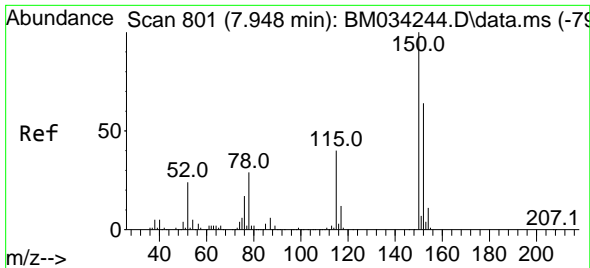
(#) = qualifier out of range (m) = manual integration (+) = signals summed

Data Path : Z:\svoasrv\HPCHEM1\BNA_M\Data\BM032322\
 Data File : BM034352.D
 Acq On : 23 Mar 2022 23:09
 Operator : CG/JU
 Sample : N1958-06 5X
 Misc :
 ALS Vial : 14 Sample Multiplier: 1

Instrument :
 BNA_M
 ClientSampleId :
 C-6-5-6

Quant Time: Mar 24 02:44:01 2022
 Quant Method : Z:\svoasrv\HPCHEM1\BNA_M\Methods\8270-BM031522.M
 Quant Title : ASP BNA STANDARDS FOR 5 POINT CALIBRATION
 QLast Update : Thu Mar 24 02:40:59 2022
 Response via : Initial Calibration

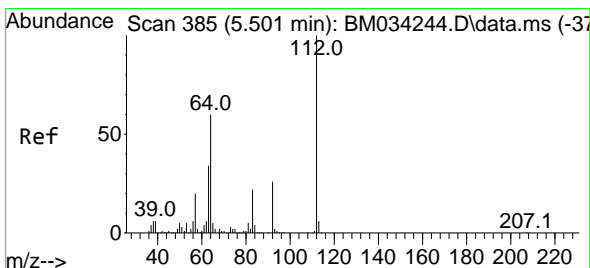
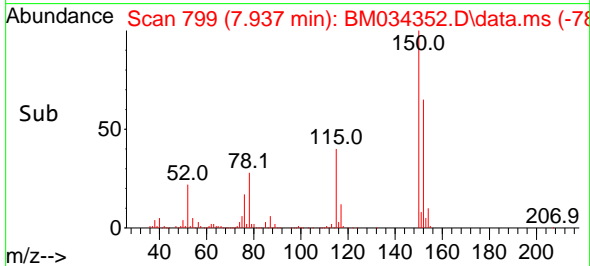
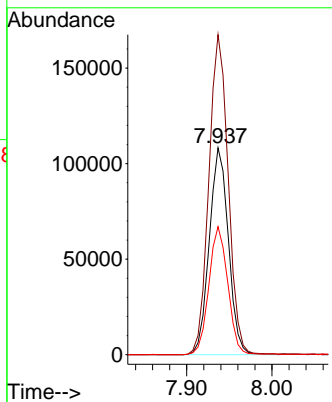
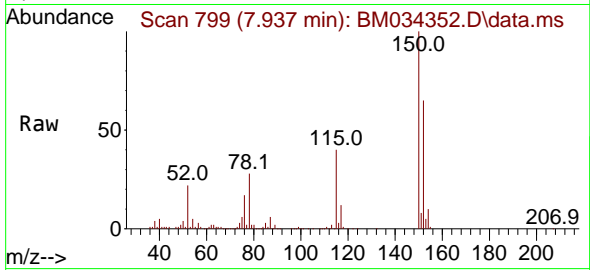




#1
 1,4-Dichlorobenzene-d4
 Concen: 20.000 ng
 RT: 7.937 min Scan# 799
 Delta R.T. -0.005 min
 Lab File: BM034352.D
 Acq: 23 Mar 2022 23:09

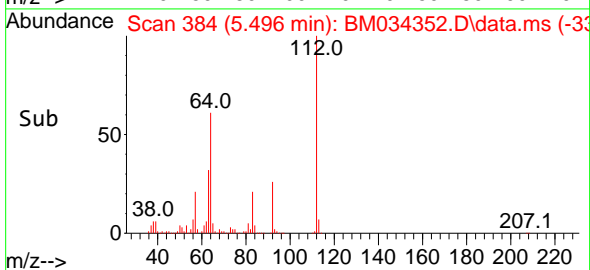
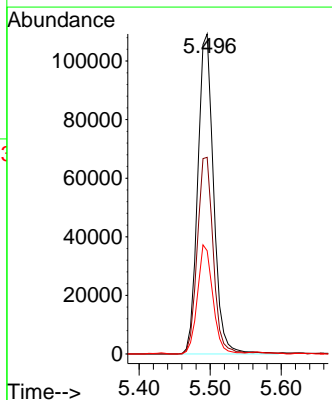
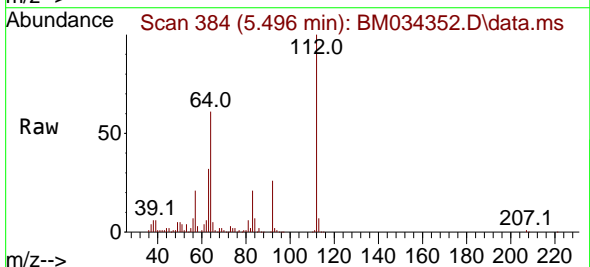
Instrument :
 BNA_M
 ClientSampleId :
 C-6-5-6

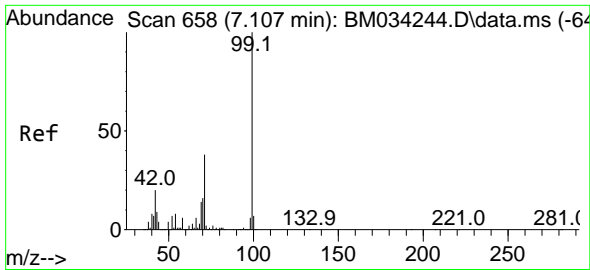
Tgt Ion:152 Resp: 168960
 Ion Ratio Lower Upper
 152 100
 150 154.6 125.4 188.2
 115 61.9 50.1 75.1



#5
 2-Fluorophenol
 Concen: 18.045 ng
 RT: 5.496 min Scan# 384
 Delta R.T. 0.006 min
 Lab File: BM034352.D
 Acq: 23 Mar 2022 23:09

Tgt Ion:112 Resp: 169952
 Ion Ratio Lower Upper
 112 100
 64 61.5 47.9 71.9
 63 32.2 27.1 40.7



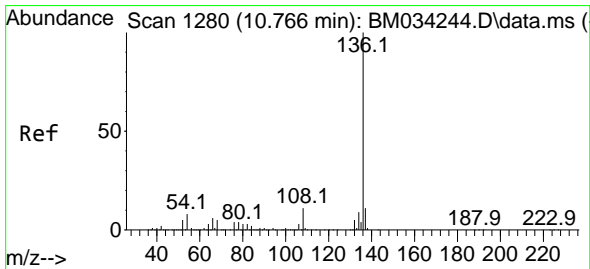
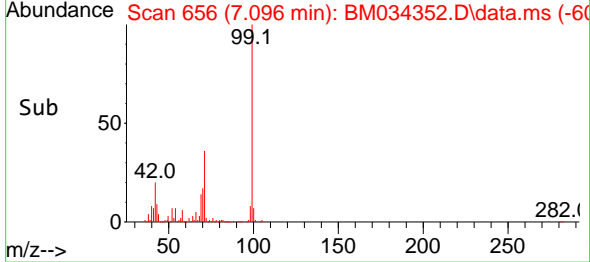
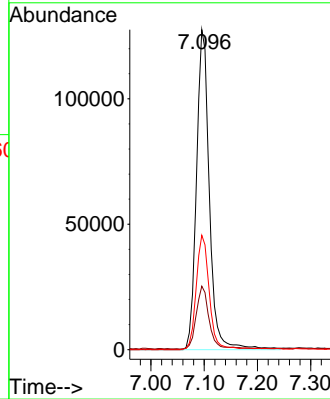
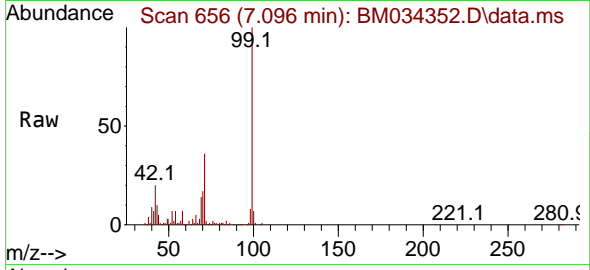


#7
 Phenol-d6
 Concen: 15.931 ng
 RT: 7.096 min Scan# 61
 Delta R.T. -0.006 min
 Lab File: BM034352.D
 Acq: 23 Mar 2022 23:09

Instrument :
 BNA_M
 ClientSampleId :
 C-6-5-6

Tgt Ion: 99 Resp: 214828

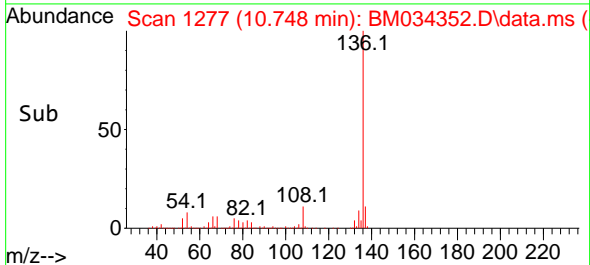
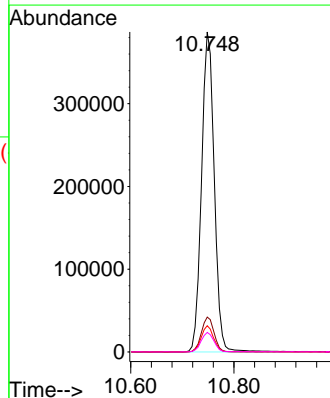
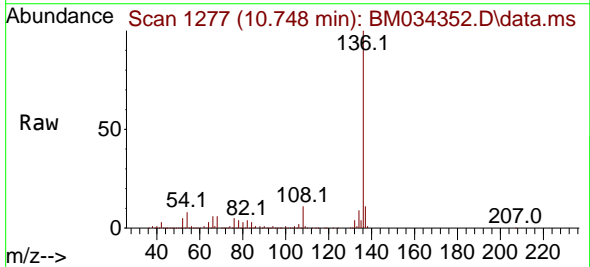
Ion	Ratio	Lower	Upper
99	100		
42	19.8	15.6	23.4
71	35.8	30.6	46.0

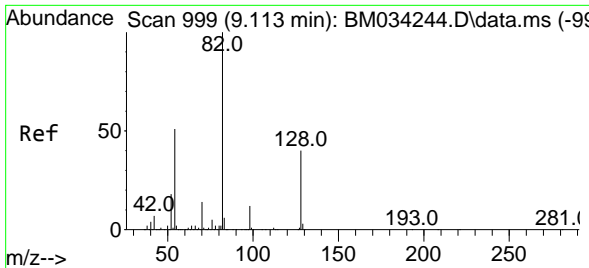


#21
 Naphthalene-d8
 Concen: 20.000 ng
 RT: 10.748 min Scan# 1277
 Delta R.T. -0.006 min
 Lab File: BM034352.D
 Acq: 23 Mar 2022 23:09

Tgt Ion: 136 Resp: 661402

Ion	Ratio	Lower	Upper
136	100		
137	10.9	8.6	13.0
54	8.2	6.2	9.4
68	6.1	4.3	6.5



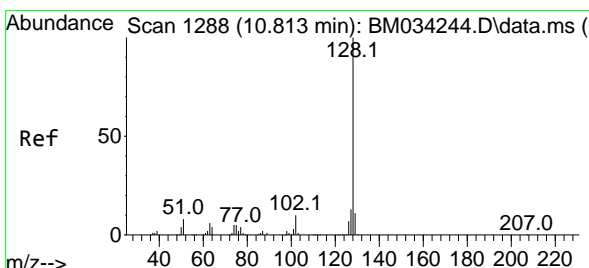
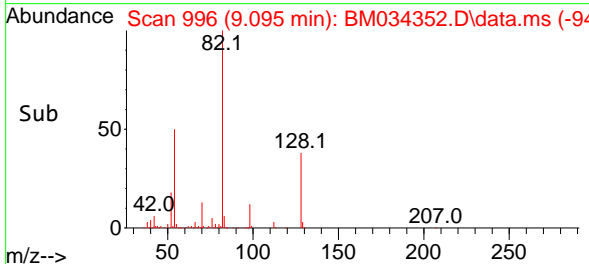
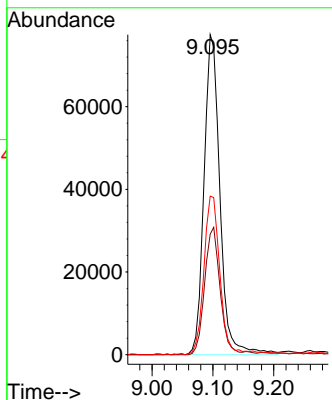
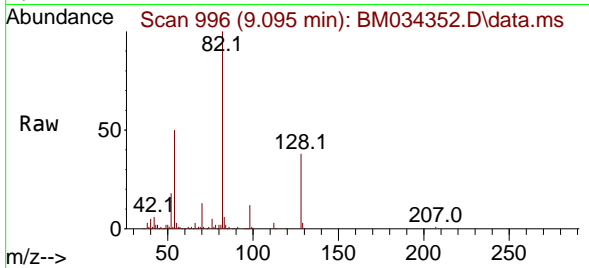


#23
 Nitrobenzene-d5
 Concen: 10.360 ng
 RT: 9.095 min Scan# 996
 Delta R.T. -0.012 min
 Lab File: BM034352.D
 Acq: 23 Mar 2022 23:09

Instrument :
 BNA_M
 ClientSampleId :
 C-6-5-6

Tgt Ion: 82 Resp: 140736

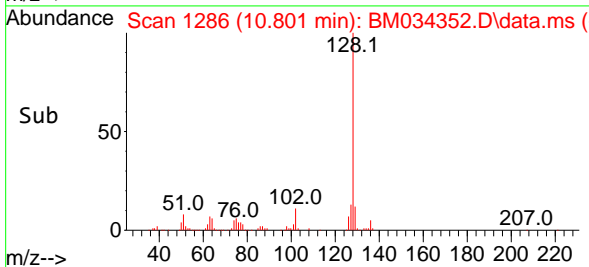
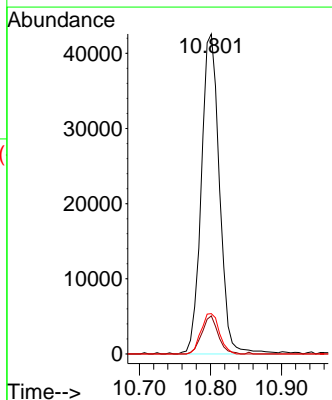
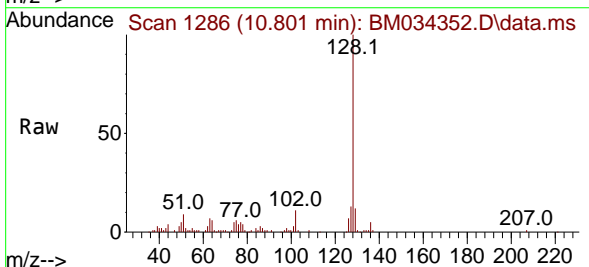
Ion	Ratio	Lower	Upper
82	100		
128	37.7	31.9	47.9
54	49.5	40.6	61.0

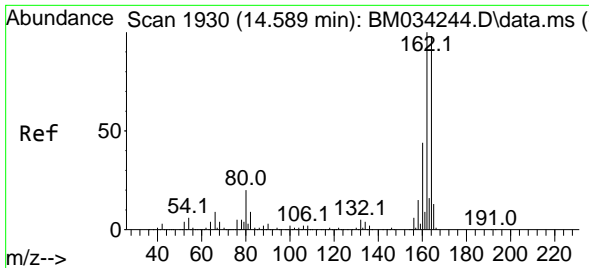


#31
 Naphthalene
 Concen: 2.201 ng
 RT: 10.801 min Scan# 1286
 Delta R.T. 0.000 min
 Lab File: BM034352.D
 Acq: 23 Mar 2022 23:09

Tgt Ion: 128 Resp: 75850

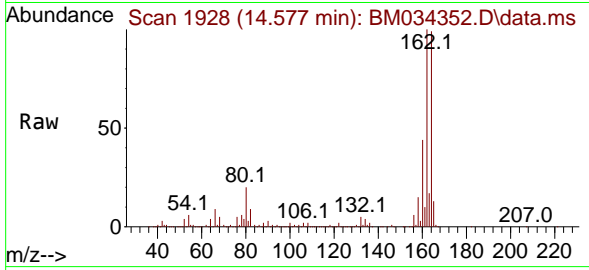
Ion	Ratio	Lower	Upper
128	100		
129	11.9	8.8	13.2
127	12.6	10.2	15.4



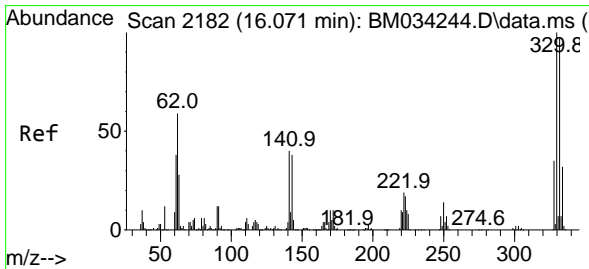
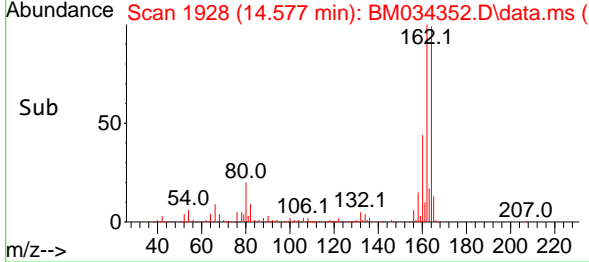
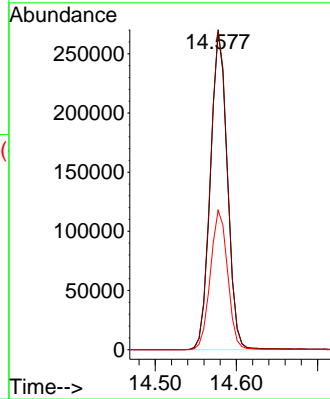


#39
 Acenaphthene-d10
 Concen: 20.000 ng
 RT: 14.577 min Scan# 1930
 Delta R.T. -0.006 min
 Lab File: BM034352.D
 Acq: 23 Mar 2022 23:09

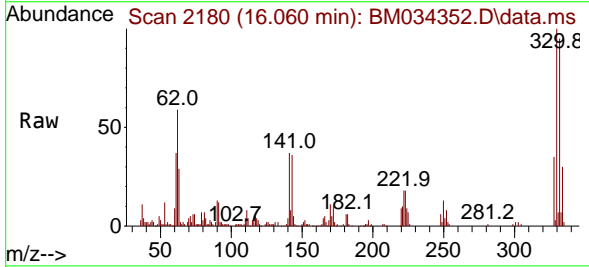
Instrument :
 BNA_M
 ClientSampleId :
 C-6-5-6



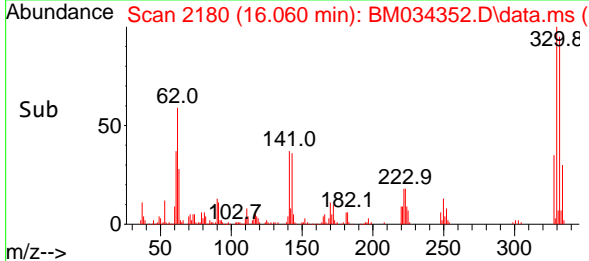
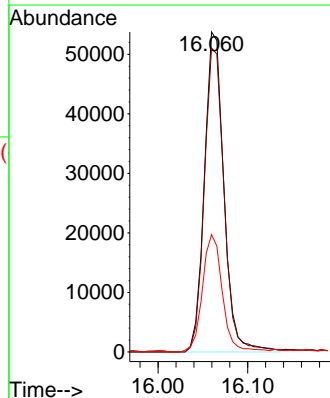
Tgt Ion:164 Resp: 388352
 Ion Ratio Lower Upper
 164 100
 162 100.7 81.6 122.4
 160 43.8 35.6 53.4

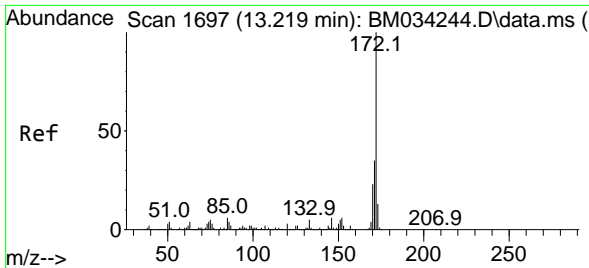


#42
 2,4,6-Tribromophenol
 Concen: 15.515 ng
 RT: 16.060 min Scan# 2180
 Delta R.T. -0.006 min
 Lab File: BM034352.D
 Acq: 23 Mar 2022 23:09



Tgt Ion:330 Resp: 81212
 Ion Ratio Lower Upper
 330 100
 332 96.3 78.2 117.4
 141 37.4 30.6 45.8



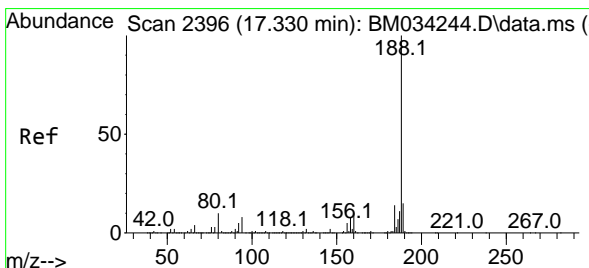
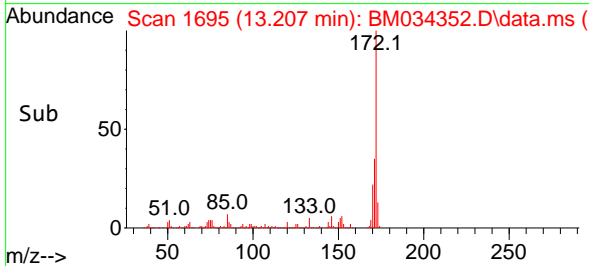
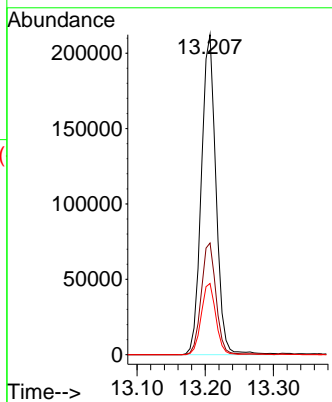
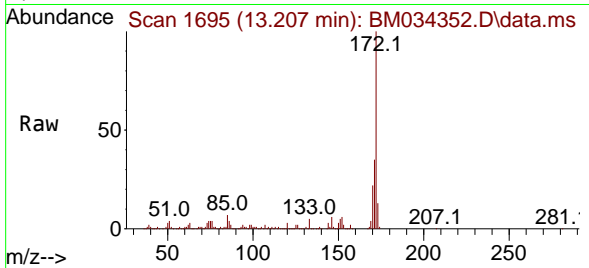


#45
 2-Fluorobiphenyl
 Concen: 11.156 ng
 RT: 13.207 min Scan# 1695
 Delta R.T. -0.006 min
 Lab File: BM034352.D
 Acq: 23 Mar 2022 23:09

Instrument : BNA_M
 ClientSampleId : C-6-5-6

Tgt Ion:172 Resp: 317062

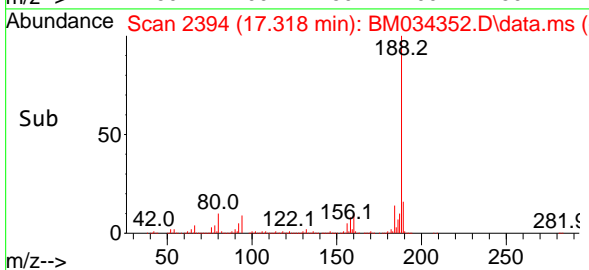
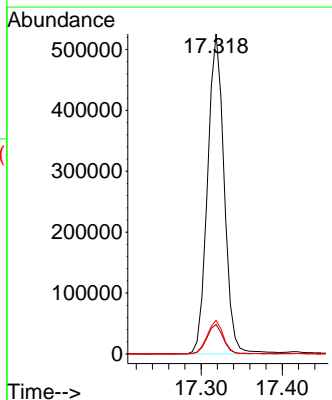
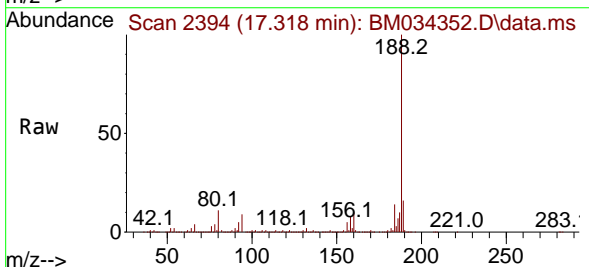
Ion	Ratio	Lower	Upper
172	100		
171	34.9	28.0	42.0
170	22.3	18.6	28.0

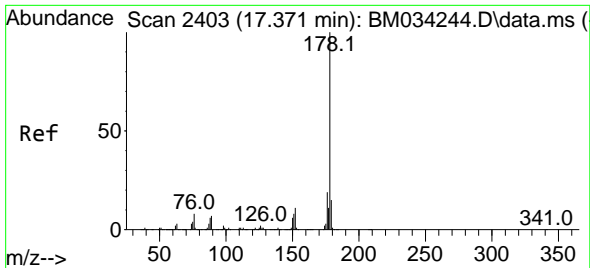


#64
 Phenanthrene-d10
 Concen: 20.000 ng
 RT: 17.318 min Scan# 2394
 Delta R.T. 0.000 min
 Lab File: BM034352.D
 Acq: 23 Mar 2022 23:09

Tgt Ion:188 Resp: 746654

Ion	Ratio	Lower	Upper
188	100		
94	9.2	6.6	9.8
80	10.5	7.8	11.8



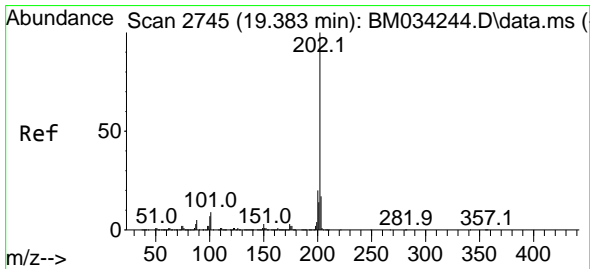
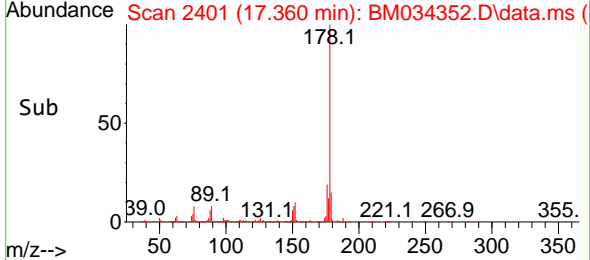
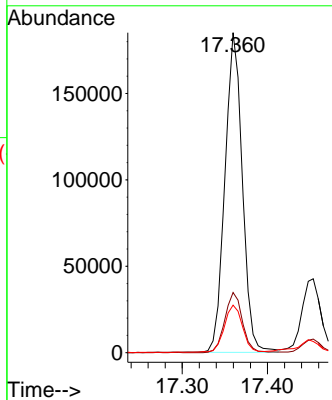
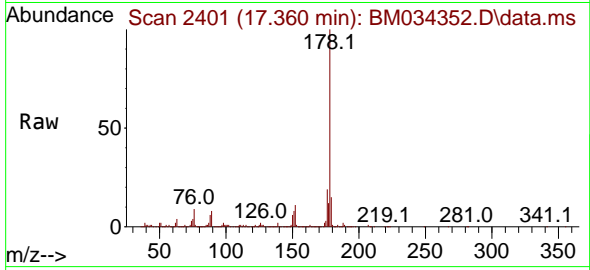


#71
 Phenanthrene
 Concen: 6.295 ng
 RT: 17.360 min Scan# 24
 Delta R.T. -0.006 min
 Lab File: BM034352.D
 Acq: 23 Mar 2022 23:09

Instrument : BNA_M
 ClientSampleId : C-6-5-6

Tgt Ion:178 Resp: 263223

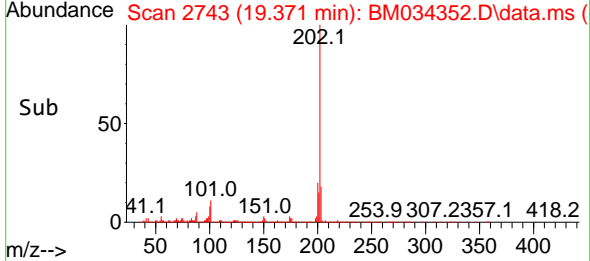
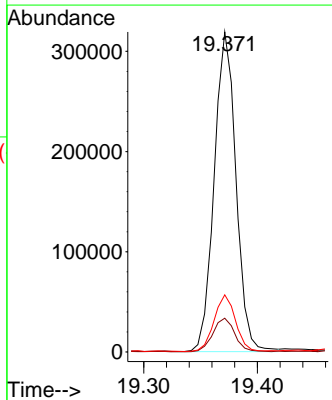
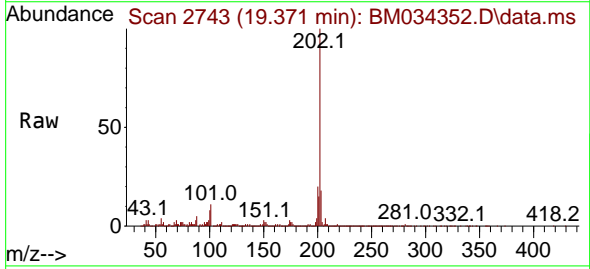
Ion	Ratio	Lower	Upper
178	100		
176	18.8	15.1	22.7
179	14.8	12.2	18.4

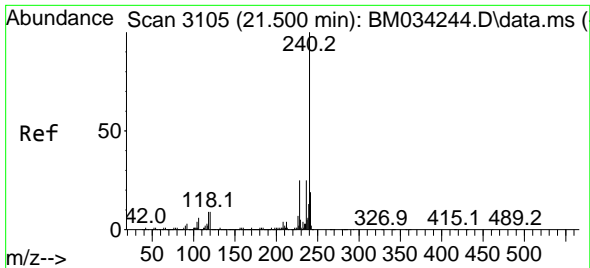


#75
 Fluoranthene
 Concen: 9.079 ng
 RT: 19.371 min Scan# 2743
 Delta R.T. -0.006 min
 Lab File: BM034352.D
 Acq: 23 Mar 2022 23:09

Tgt Ion:202 Resp: 425566

Ion	Ratio	Lower	Upper
202	100		
101	10.5	0.0	29.4
203	17.8	0.0	37.1

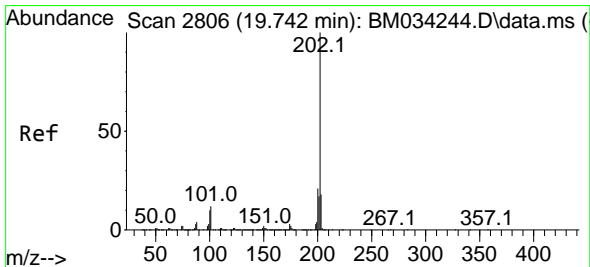
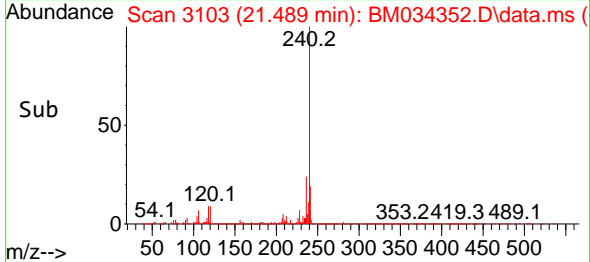
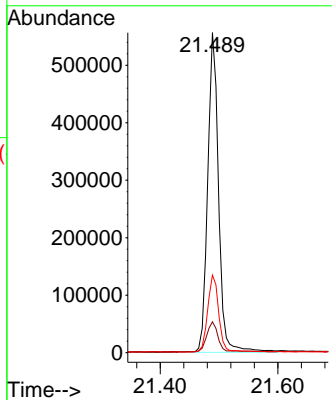
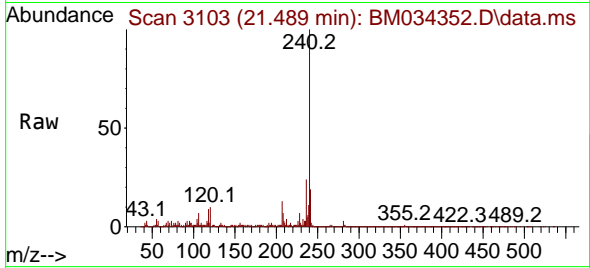




#76
 Chrysene-d12
 Concen: 20.000 ng
 RT: 21.489 min Scan# 31
 Delta R.T. -0.006 min
 Lab File: BM034352.D
 Acq: 23 Mar 2022 23:09

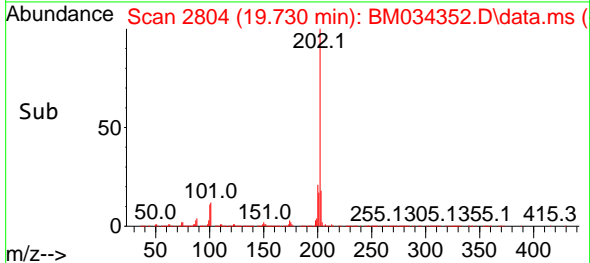
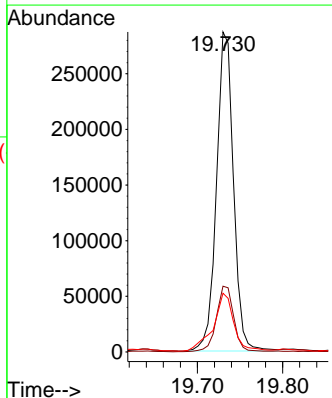
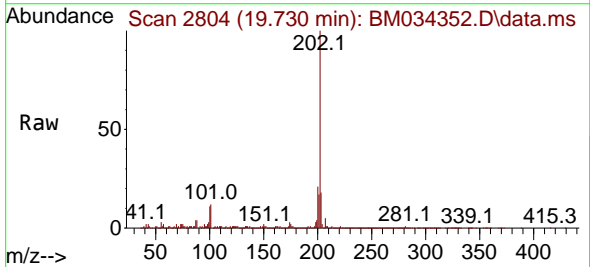
Instrument :
 BNA_M
 ClientSampleId :
 C-6-5-6

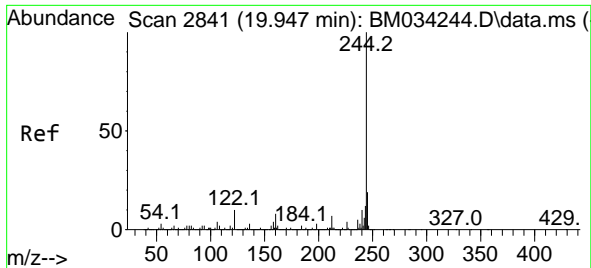
Tgt Ion:240 Resp: 718177
 Ion Ratio Lower Upper
 240 100
 120 9.7 7.3 10.9
 236 24.3 20.2 30.2



#78
 Pyrene
 Concen: 7.864 ng
 RT: 19.730 min Scan# 2804
 Delta R.T. -0.006 min
 Lab File: BM034352.D
 Acq: 23 Mar 2022 23:09

Tgt Ion:202 Resp: 397933
 Ion Ratio Lower Upper
 202 100
 200 20.6 16.6 24.8
 203 18.3 14.1 21.1

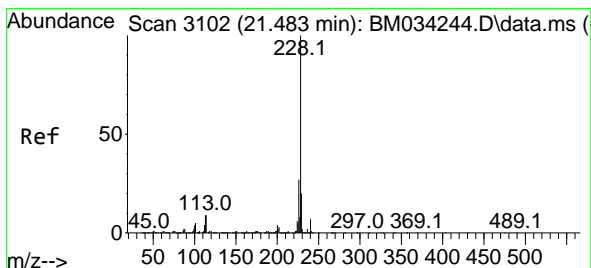
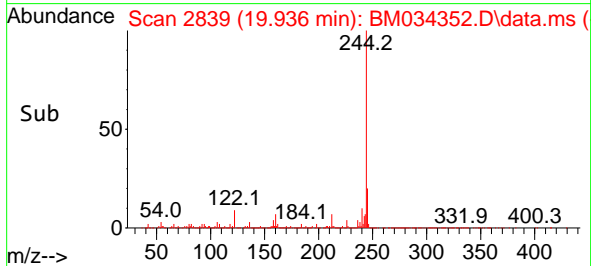
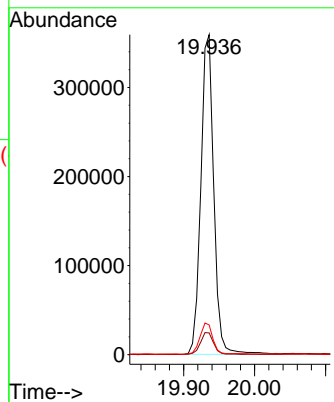
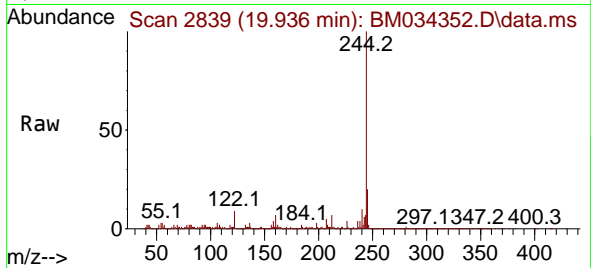




#79
 Terphenyl-d14
 Concen: 11.042 ng
 RT: 19.936 min Scan# 21
 Delta R.T. 0.000 min
 Lab File: BM034352.D
 Acq: 23 Mar 2022 23:09

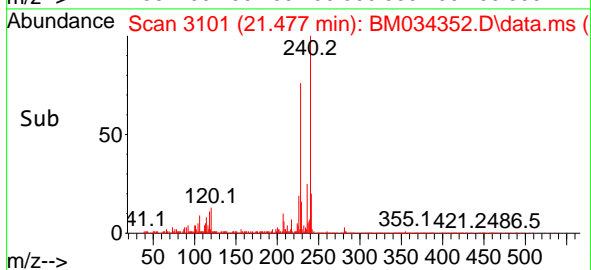
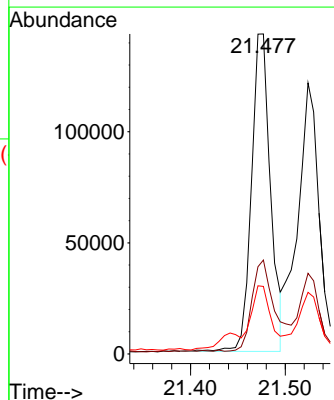
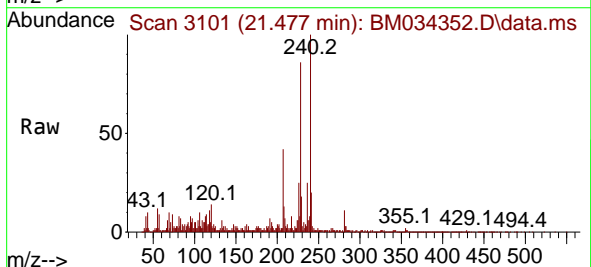
Instrument :
 BNA_M
 ClientSampleId :
 C-6-5-6

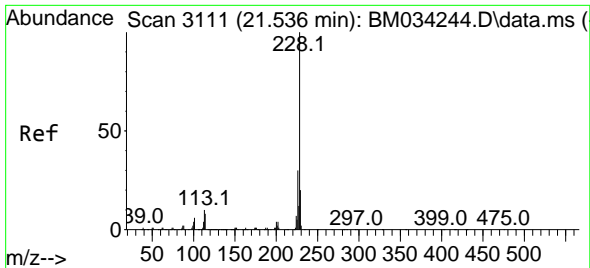
Tgt Ion:244 Resp: 456399
 Ion Ratio Lower Upper
 244 100
 212 6.8 5.9 8.9
 122 9.3 7.8 11.8



#81
 Benzo(a)anthracene
 Concen: 4.414 ng
 RT: 21.477 min Scan# 3101
 Delta R.T. 0.000 min
 Lab File: BM034352.D
 Acq: 23 Mar 2022 23:09

Tgt Ion:228 Resp: 200075
 Ion Ratio Lower Upper
 228 100
 226 29.3 21.6 32.4
 229 21.1 15.8 23.6

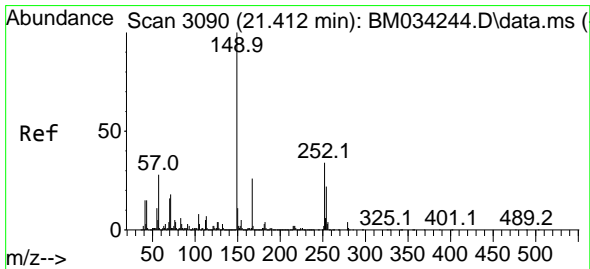
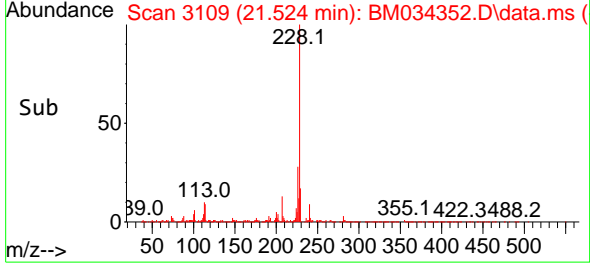
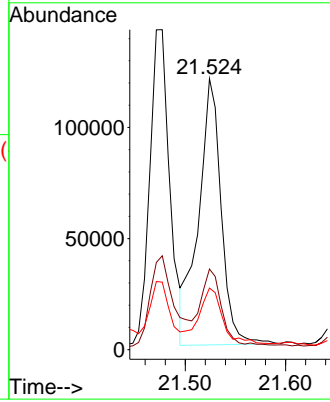
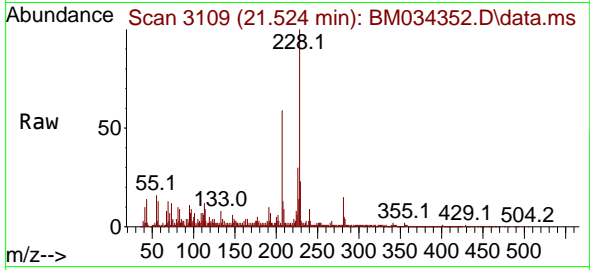




#83
 Chrysene
 Concen: 4.096 ng
 RT: 21.524 min Scan# 3111
 Delta R.T. -0.012 min
 Lab File: BM034352.D
 Acq: 23 Mar 2022 23:09

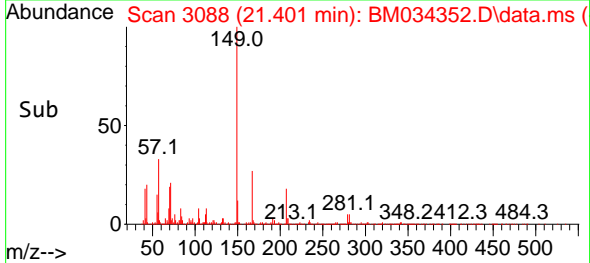
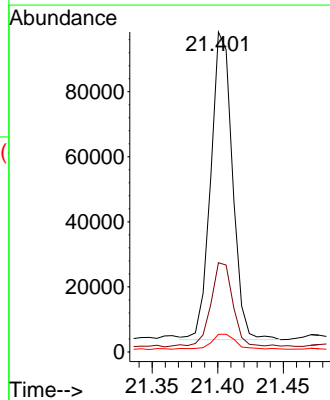
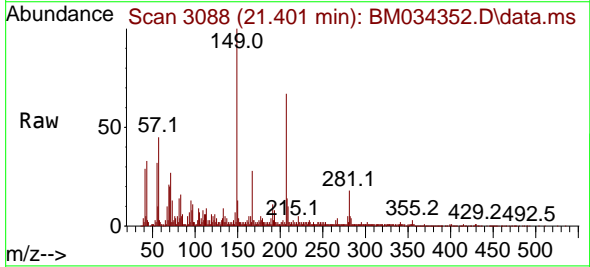
Instrument :
 BNA_M
 ClientSampleId :
 C-6-5-6

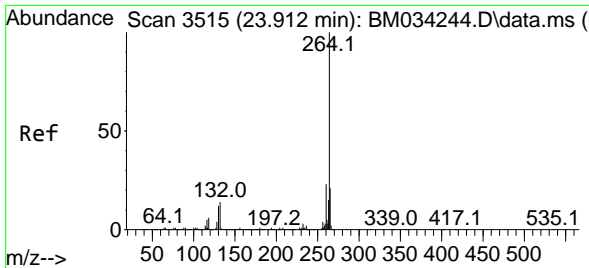
Tgt Ion:228 Resp: 189595
 Ion Ratio Lower Upper
 228 100
 226 29.7 23.8 35.6
 229 22.7 15.6 23.4



#84
 Bis(2-ethylhexyl)phthalate
 Concen: 3.439 ng
 RT: 21.401 min Scan# 3088
 Delta R.T. -0.006 min
 Lab File: BM034352.D
 Acq: 23 Mar 2022 23:09

Tgt Ion:149 Resp: 108673
 Ion Ratio Lower Upper
 149 100
 167 27.9 21.2 31.8
 279 5.5 3.4 5.2#



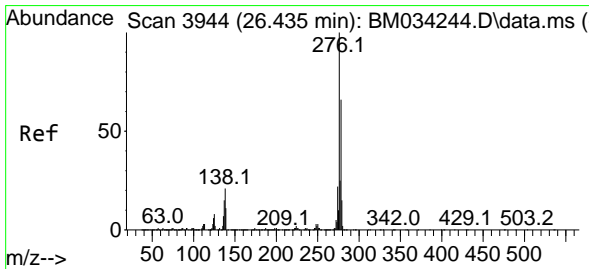
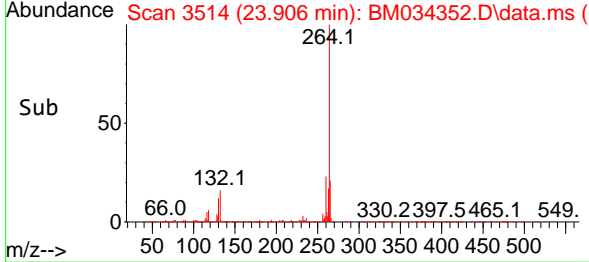
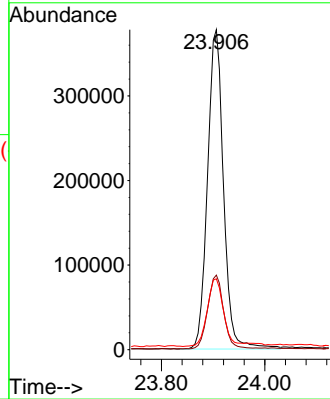
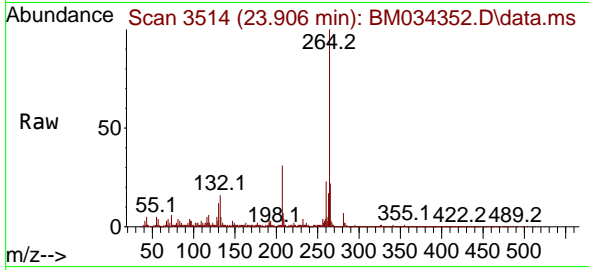


#86
 Perylene-d12
 Concen: 20.000 ng
 RT: 23.906 min Scan# 31
 Delta R.T. 0.000 min
 Lab File: BM034352.D
 Acq: 23 Mar 2022 23:09

Instrument :
 BNA_M
 ClientSampleId :
 C-6-5-6

Tgt Ion:264 Resp: 812787

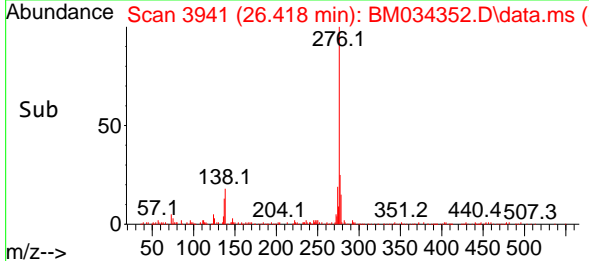
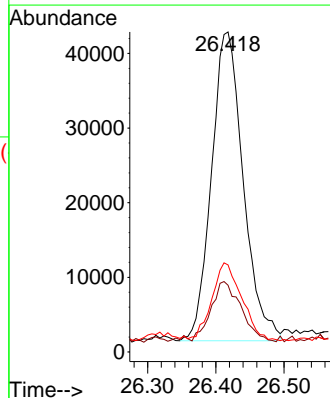
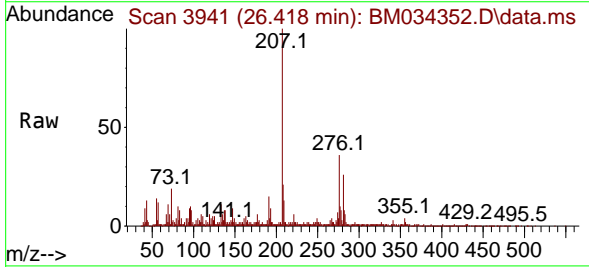
Ion	Ratio	Lower	Upper
264	100		
260	23.3	18.6	28.0
265	22.1	17.6	26.4

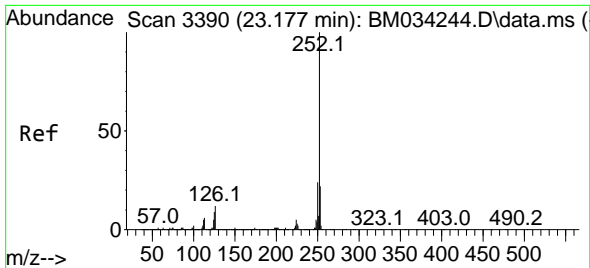


#87
 Indeno(1,2,3-cd)pyrene
 Concen: 2.566 ng
 RT: 26.418 min Scan# 3941
 Delta R.T. -0.006 min
 Lab File: BM034352.D
 Acq: 23 Mar 2022 23:09

Tgt Ion:276 Resp: 134170

Ion	Ratio	Lower	Upper
276	100		
138	19.4	16.6	25.0
277	23.8	19.8	29.6



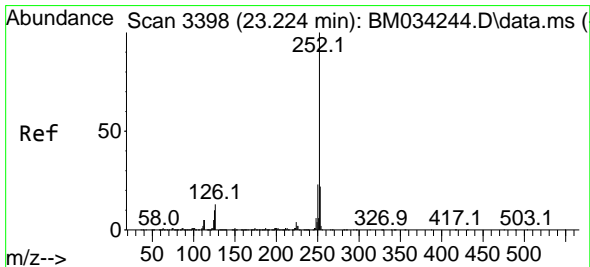
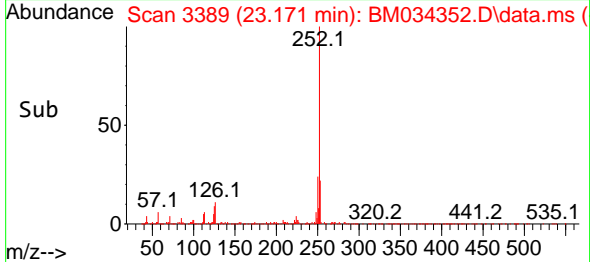
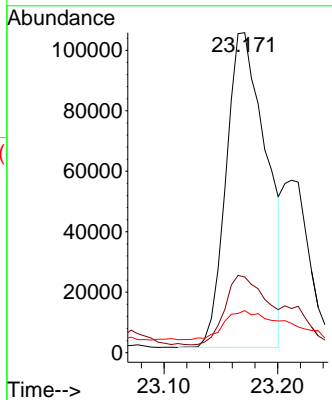
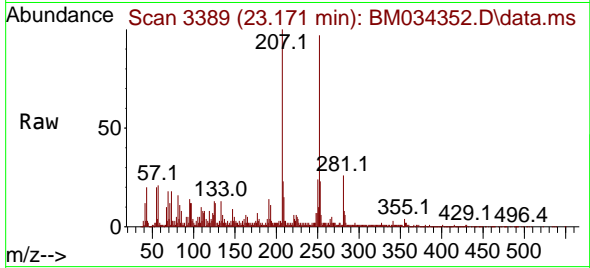


#88
 Benzo(b)fluoranthene
 Concen: 5.257 ng
 RT: 23.171 min Scan# 31
 Delta R.T. 0.000 min
 Lab File: BM034352.D
 Acq: 23 Mar 2022 23:09

Instrument :
 BNA_M
 ClientSampleId :
 C-6-5-6

Tgt Ion:252 Resp: 255500

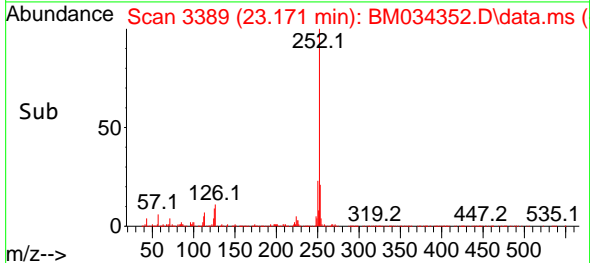
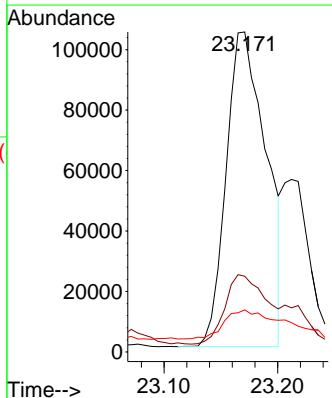
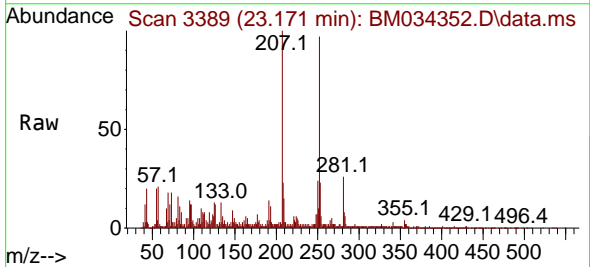
Ion	Ratio	Lower	Upper
252	100		
253	23.7	17.8	26.8
125	13.1	7.2	10.8

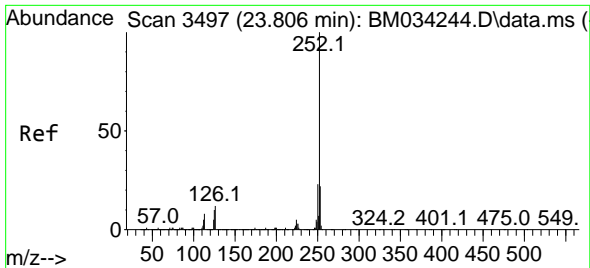


#89
 Benzo(k)fluoranthene
 Concen: 4.963 ng
 RT: 23.171 min Scan# 3389
 Delta R.T. -0.053 min
 Lab File: BM034352.D
 Acq: 23 Mar 2022 23:09

Tgt Ion:252 Resp: 255500

Ion	Ratio	Lower	Upper
252	100		
253	23.7	17.6	26.4
125	13.1	7.5	11.3

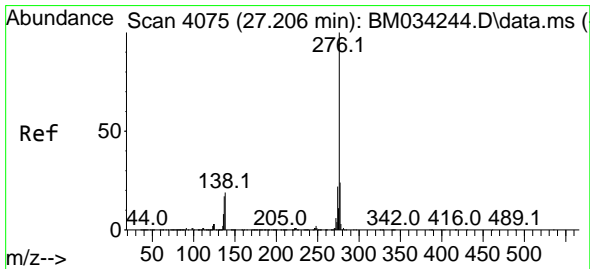
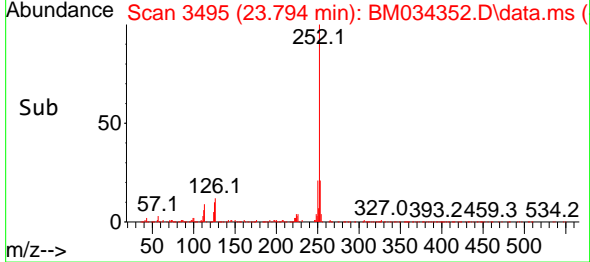
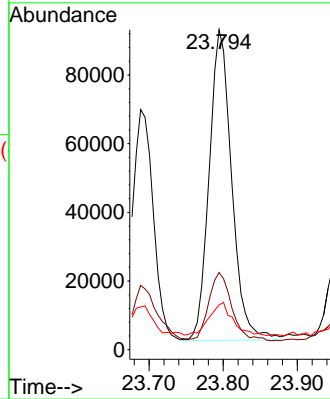
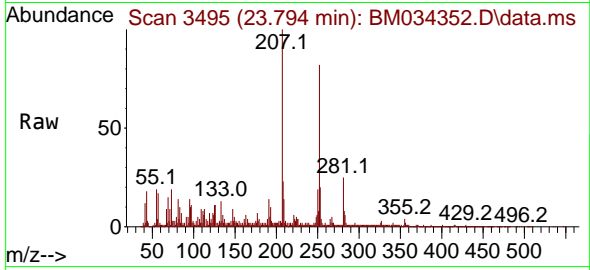




#90
 Benzo(a)pyrene
 Concen: 4.635 ng
 RT: 23.794 min Scan# 3495
 Delta R.T. -0.006 min
 Lab File: BM034352.D
 Acq: 23 Mar 2022 23:09

Instrument :
 BNA_M
 ClientSampleId :
 C-6-5-6

Tgt Ion:252 Resp: 190991
 Ion Ratio Lower Upper
 252 100
 253 24.1 17.5 26.3
 125 14.0 7.8 11.6#



#92
 Benzo(g,h,i)perylene
 Concen: 3.313 ng
 RT: 27.188 min Scan# 4072
 Delta R.T. -0.012 min
 Lab File: BM034352.D
 Acq: 23 Mar 2022 23:09

Tgt Ion:276 Resp: 145373
 Ion Ratio Lower Upper
 276 100
 277 26.6 19.0 28.4
 138 20.9 15.6 23.4

