

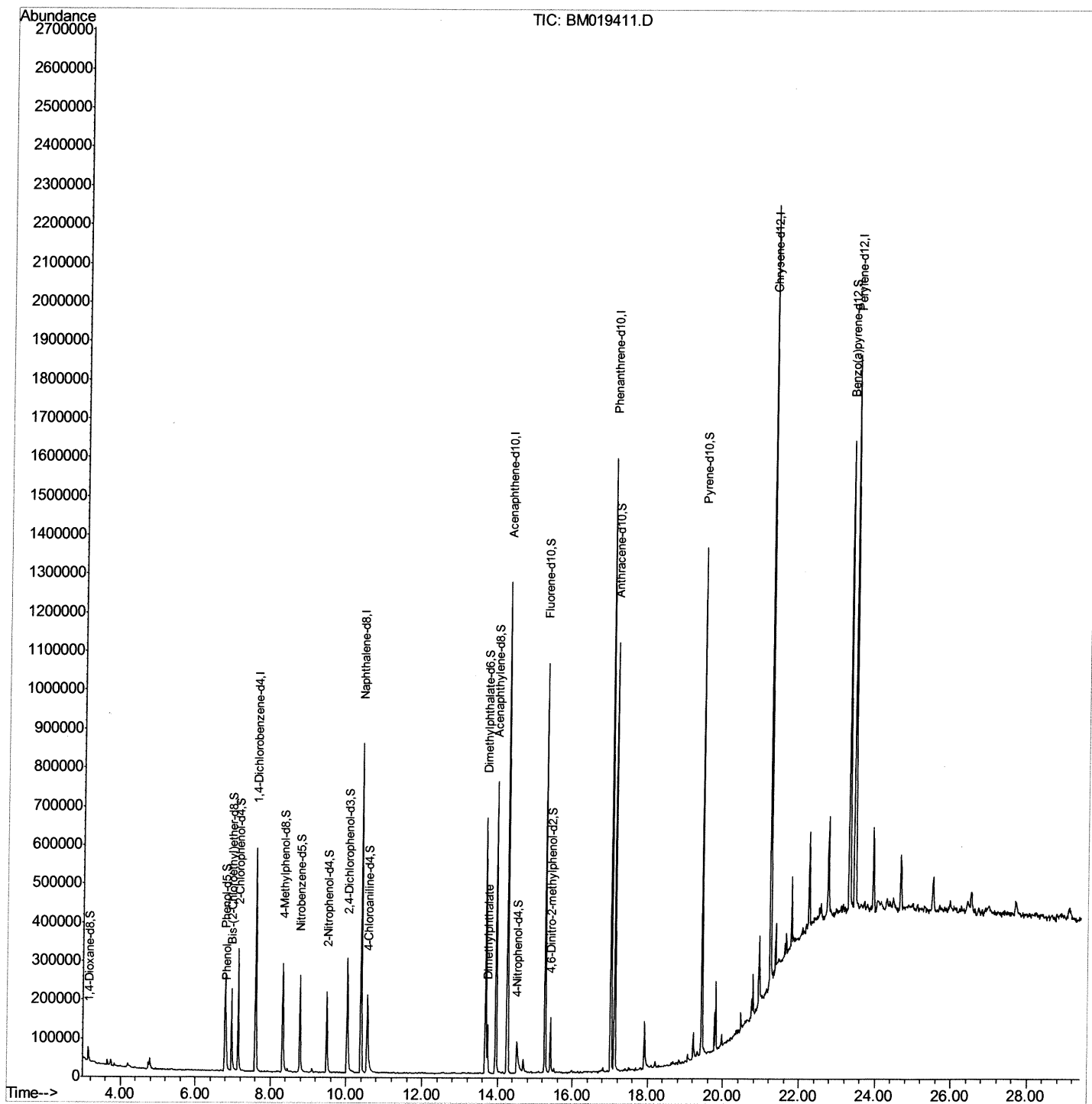
Quantitation Report (QT Reviewed)

Data Path : Z:\svoasrv\HPCHEM1\BNA_M\Data\BM032419\
Data File : BM019411.D
Acq On : 25 Mar 2019 02:37
Operator : JU/SJ
Sample : K2044-10
Misc :
ALS Vial : 25 Sample Multiplier: 1

Instrument :
BNA_M
Client Sampled :
BF5W6

Manual Integrations
APPROVED
Sohil
3/26/2019 6:29:30 PM

Quant Time: Mar 25 05:14:41 2019
Quant Method : Z:\SVOASRV\HPCHEM1\BNA_M\METHODS\SOM-EPA-BM032219MA.M
Quant Title : SVOA CALIBRATION
QLast Update : Mon Mar 25 03:11:42 2019
Response via : Initial Calibration



Quantitation Report (Qedit)

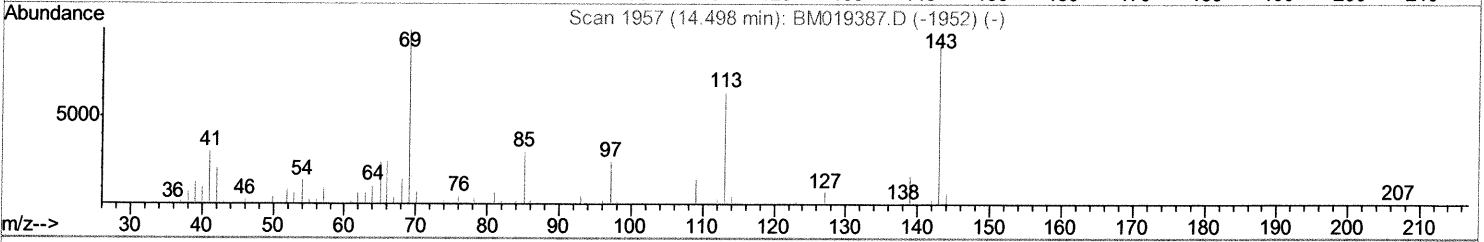
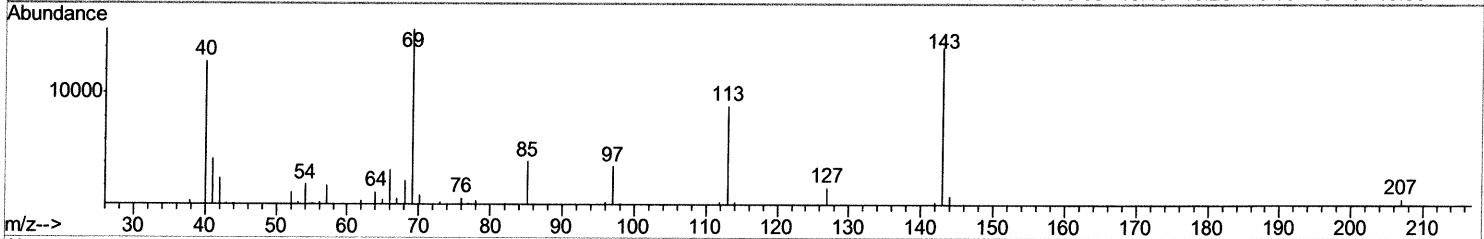
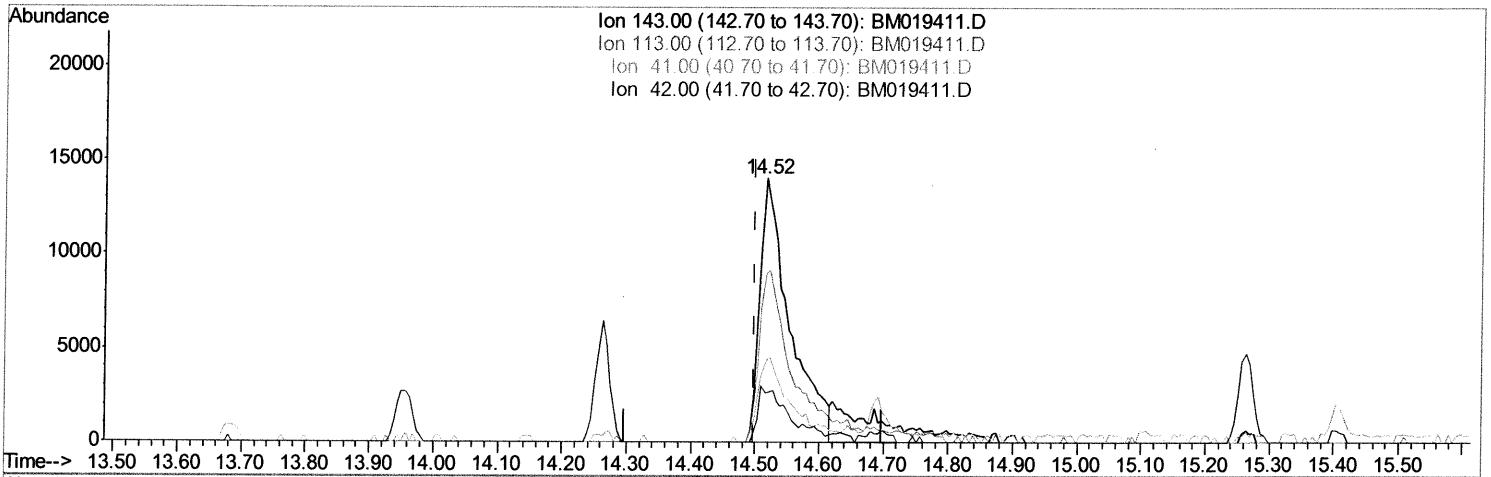
Data Path : Z:\svoasrv\HPCHEM1\BNA_M\Data\BM032419\
 Data File : BM019411.D
 Acq On : 25 Mar 2019 02:37
 Operator : JU/SJ
 Sample : K2044-10
 Misc :
 ALS Vial : 25 Sample Multiplier: 1

Instrument :
 BNA_M
 ClientSampled :
 BF5W6

Manual Integrations
 APPROVED

Sohil
 3/26/2019 6:29:30 PM

Quant Time: Mar 25 05:12:56 2019
 Quant Method : Z:\SVOASRV\HPCHEM1\BNA_M\METHODS\SOM-EPA-BM032219MA.M
 Quant Title : SVOA CALIBRATION
 QLast Update : Mon Mar 25 03:11:42 2019
 Response via : Initial Calibration



TIC: BM019411.D

(52) 4-Nitrophenol-d4 (S)

14.515min (+0.018) 8.85ng/ul

response 45488

Ion	Exp%	Act%
143.00	100	100
113.00	77.10	63.53
41.00	32.60	30.38
42.00	22.30	18.83

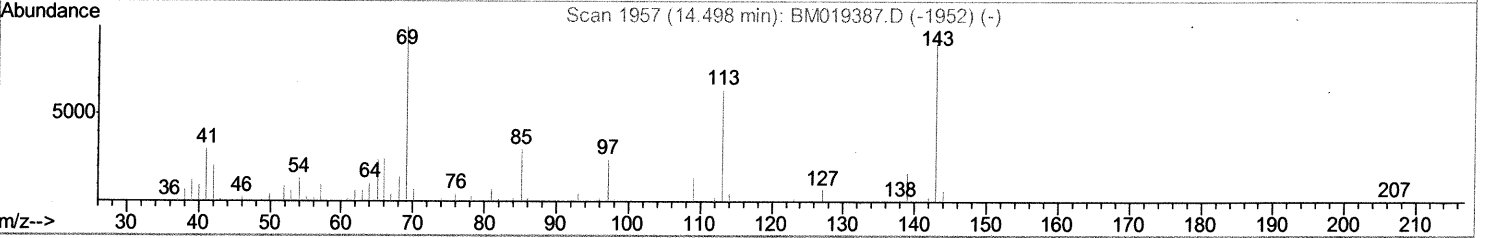
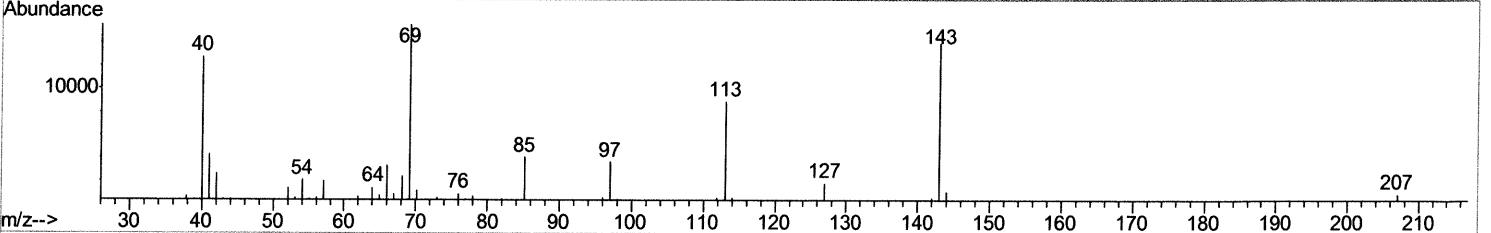
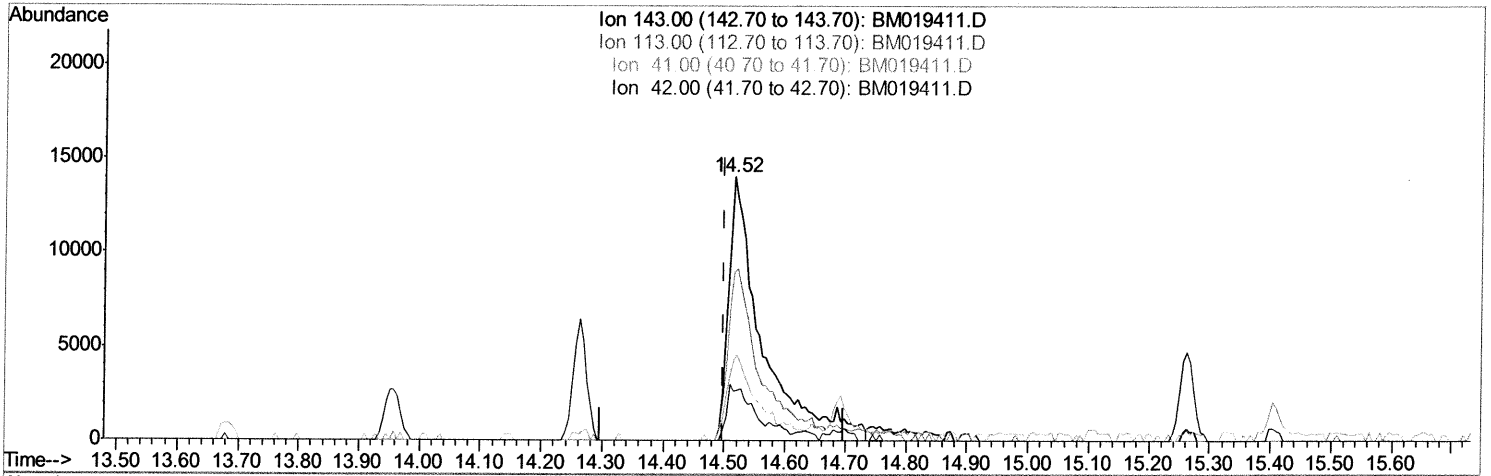
Quantitation Report (Qedit)

Data Path : Z:\svoasrv\HPCHEM1\BNA_M\Data\BM032419\
 Data File : BM019411.D
 Acq On : 25 Mar 2019 02:37
 Operator : JU/SJ
 Sample : K2044-10
 Misc :
 ALS Vial : 25 Sample Multiplier: 1

Instrument :
 BNA_M
 ClientSampled :
 BF5W6

Manual Integrations
APPROVED
 Sohil
 3/26/2019 6:29:30 PM

Quant Time: Mar 25 05:12:56 2019
 Quant Method : Z:\SVOASRV\HPCHEM1\BNA_M\METHODS\SOM-EPA-BM032219MA.M
 Quant Title : SVOA CALIBRATION
 QLast Update : Mon Mar 25 03:11:42 2019
 Response via : Initial Calibration



TIC: BM019411.D

(52) 4-Nitrophenol-d4 (S)

14.515min (+0.018) 10.52ng/ul m > SJ 4/1/19

response 54103

Ion	Exp%	Act%
143.00	100	100
113.00	77.10	63.53
41.00	32.60	30.38
42.00	22.30	18.83

Data Path : Z:\svoasrv\HPCHEM1\BNA_M\Data\BM032419\
 Data File : BM019411.D
 Acq On : 25 Mar 2019 02:37
 Operator : JU/SJ
 Sample : K2044-10
 Misc :
 ALS Vial : 25 Sample Multiplier: 1

Instrument :
 BNA_M
 ClientSampled :
 BF5W6

Manual Integrations
 APPROVED
 Sohil
 3/26/2019 6:29:30 PM

Quant Time: Mar 25 05:14:41 2019
 Quant Method : Z:\SVOASRV\HPCHEM1\BNA_M\METHODS\SOM-EPA-BM032219MA.M
 Quant Title : SVOA CALIBRATION
 QLast Update : Mon Mar 25 03:11:42 2019
 Response via : Initial Calibration

Internal Standards	R.T.	QIon	Response	Conc	Units	Dev(Min)
1) 1,4-Dichlorobenzene-d4	7.60	152	162892	20.00	ng/ul	0.00
18) Naphthalene-d8	10.39	136	690022	20.00	ng/ul	0.00
36) Acenaphthene-d10	14.26	164	406563	20.00	ng/ul	0.00
62) Phenanthrene-d10	17.02	188	887132	20.00	ng/ul	0.00
78) Chrysene-d12	21.22	240	895045	20.00	ng/ul	0.00
86) Perylene-d12	23.44	264	989443	20.00	ng/ul	0.00

System Monitoring Compounds

3) 1,4-Dioxane-d8	3.15	96	20958	5.04	ng/uL	0.00
5) Phenol-d5	6.79	99	184721	12.73	ng/ul	0.00
7) Bis-(2-Chloroethyl)ether-d	6.96	67	120371	12.39	ng/ul	0.00
9) 2-Chlorophenol-d4	7.14	132	148776	13.53	ng/ul	0.00
13) 4-Methylphenol-d8	8.32	113	134165	12.32	ng/ul	0.00
19) Nitrobenzene-d5	8.77	128	66809	13.57	ng/ul	0.00
22) 2-Nitrophenol-d4	9.49	143	77999	14.24	ng/ul	0.00
26) 2,4-Dichlorophenol-d3	10.02	165	137504	13.30	ng/ul	0.00
29) 4-Chloroaniline-d4	10.56	131	157539	12.69	ng/ul	0.00
44) Dimethylphthalate-d6	13.68	166	460509	14.04	ng/ul	0.00
47) Acenaphthylene-d8	13.96	160	552202	13.46	ng/ul	0.00
52) 4-Nitrophenol-d4	14.52	143	54103m	10.52	ng/ul	0.02
58) Fluorene-d10	15.26	176	404590	14.31	ng/ul	0.00
63) 4,6-Dinitro-2-methylphenol	15.41	200	37611	6.41	ng/ul	0.00
71) Anthracene-d10	17.12	188	604144	14.19	ng/ul	0.00
79) Pyrene-d10	19.43	212	640175	15.48	ng/ul	0.00
90) Benzo(a)pyrene-d12	23.30	264	669775	12.77	ng/ul	0.00

SJ 4/1/19

Target Compounds					Qvalue
6) Phenol	6.82	94	48767	3.222 ng/ul	99
45) Dimethylphthalate	13.73	163	87594	2.661 ng/ul#	97

(#) = qualifier out of range (m) = manual integration (+) = signals summed