

Data Path : Z:\SVOASRV\HPCHEM1\BNA_M\DATA\BM032919\
 Data File : BM019597.D
 Acq On : 30 Mar 2019 01:41
 Operator : JU/SJ
 Sample : K2084-05
 Misc :
 ALS Vial : 19 Sample Multiplier: 1

Instrument :
 BNA_M
 ClientSampleId :
 BF7W7

Quant Time: Mar 30 03:33:07 2019
 Quant Method : Z:\SVOASRV\HPCHEM1\BNA_M\METHODS\SOM-EPA-BM032219MA.M
 Quant Title : SVOA CALIBRATION
 QLast Update : Fri Mar 29 14:33:17 2019
 Response via : Initial Calibration

Internal Standards	R.T.	QIon	Response	Conc	Units	Dev(Min)
1) 1,4-Dichlorobenzene-d4	7.58	152	120334	20.00	ng/ul	0.00
18) Naphthalene-d8	10.36	136	509099	20.00	ng/ul	0.00
36) Acenaphthene-d10	14.23	164	299527	20.00	ng/ul	0.00
62) Phenanthrene-d10	17.00	188	674330	20.00	ng/ul	0.00
78) Chrysene-d12	21.20	240	818753	20.00	ng/ul	0.00
86) Perylene-d12	23.40	264	1047882	20.00	ng/ul	0.00

System Monitoring Compounds

3) 1,4-Dioxane-d8	3.12	96	21016	6.84	ng/uL	0.00
5) Phenol-d5	6.76	99	253751	23.68	ng/ul	0.00
7) Bis-(2-Chloroethyl)ether-d	6.93	67	164838	22.98	ng/ul	0.00
9) 2-Chlorophenol-d4	7.11	132	198345	24.42	ng/ul	0.00
13) 4-Methylphenol-d8	8.29	113	199174	24.76	ng/ul	0.00
19) Nitrobenzene-d5	8.75	128	92496	25.47	ng/ul	0.00
22) 2-Nitrophenol-d4	9.46	143	103679	25.65	ng/ul	0.00
26) 2,4-Dichlorophenol-d3	9.99	165	187607	24.60	ng/ul	0.00
29) 4-Chloroaniline-d4	10.52	131	248759	27.16	ng/ul	0.00
44) Dimethylphthalate-d6	13.66	166	662145	27.40	ng/ul	0.00
47) Acenaphthylene-d8	13.93	160	793796	26.27	ng/ul	0.00
52) 4-Nitrophenol-d4	14.49	143	80986	21.38	ng/ul	0.00
58) Fluorene-d10	15.24	176	558489	26.82	ng/ul	0.00
63) 4,6-Dinitro-2-methylphenol	15.39	200	81127	18.19	ng/ul	0.00
71) Anthracene-d10	17.10	188	911715	28.17	ng/ul	0.00
79) Pyrene-d10	19.40	212	1036220	27.40	ng/ul	0.00
90) Benzo(a)pyrene-d12	23.26	264	1459638	26.28	ng/ul	0.00

Target Compounds

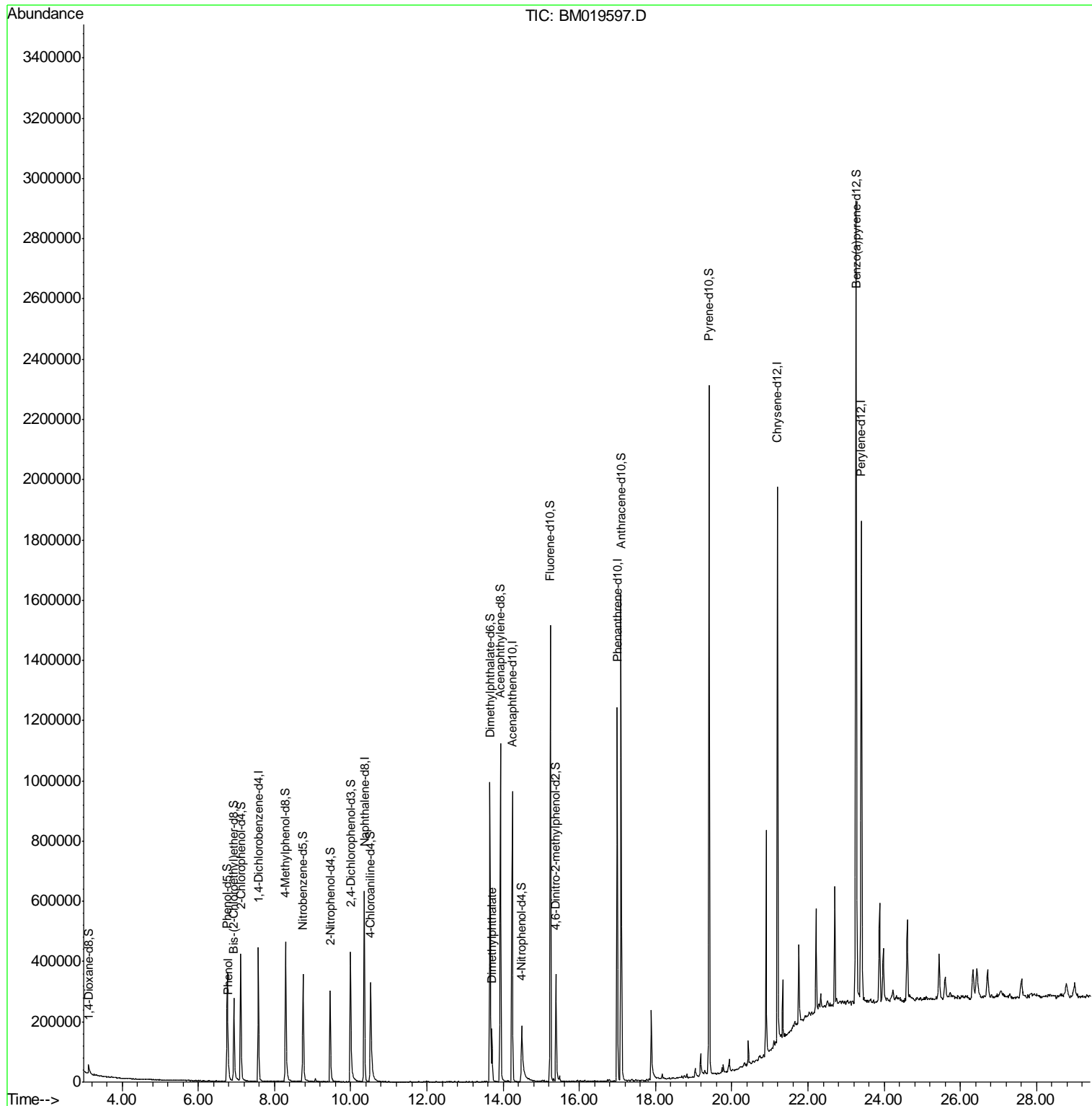
					Qvalue
6) Phenol	6.79	94	14296	1.278	ng/ul# 69
45) Dimethylphthalate	13.71	163	113590	4.684	ng/ul# 97

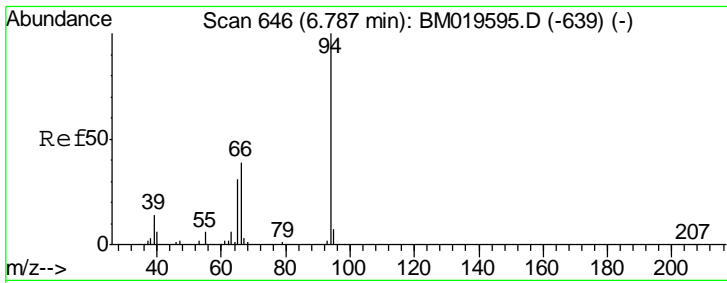
(#) = qualifier out of range (m) = manual integration (+) = signals summed

Data Path : Z:\SVOASRV\HPCHEM1\BNA_M\DATA\BM032919\
 Data File : BM019597.D
 Acq On : 30 Mar 2019 01:41
 Operator : JU/SJ
 Sample : K2084-05
 Misc :
 ALS Vial : 19 Sample Multiplier: 1

Instrument :
 BNA_M
 ClientSampleId :
 BF7W7

Quant Time: Mar 30 03:33:07 2019
 Quant Method : Z:\SVOASRV\HPCHEM1\BNA_M\METHODS\SOM-EPA-BM032219MA.M
 Quant Title : SVOA CALIBRATION
 QLast Update : Fri Mar 29 14:33:17 2019
 Response via : Initial Calibration

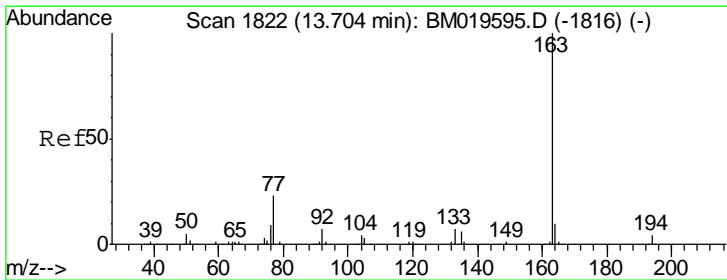
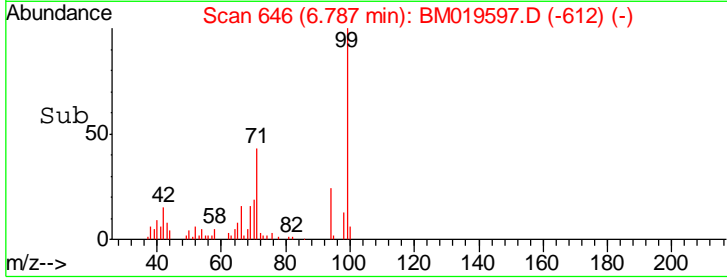
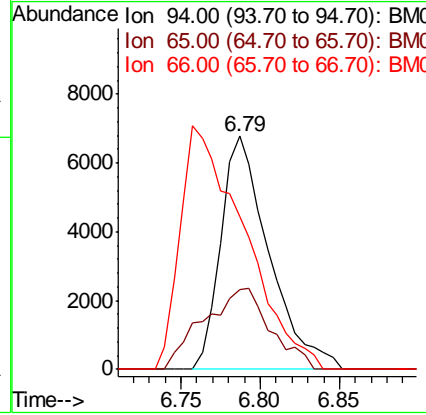
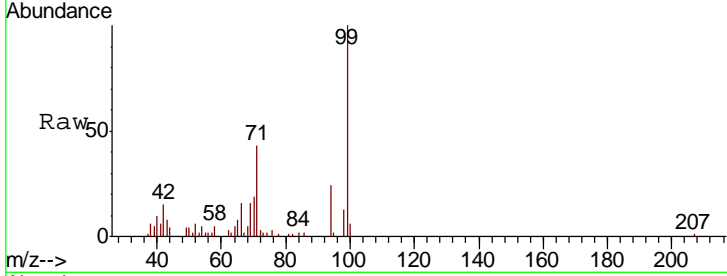




#6
 Phenol
 Concen: 1.278 ng/ul
 RT: 6.79 min Scan# 646
 Delta R.T. 0.00 min
 Lab File: BM019597.D
 Acq: 30 Mar 2019 01:41

Instrument :
 BNA_M
 ClientSampleID :
 BF7W7

Tgt Ion	Resp	Lower	Upper
94	14296		
65	34.5	23.0	34.6
66	65.8	30.4	45.6#



#45
 Dimethylphthalate
 Concen: 4.684 ng/ul
 RT: 13.71 min Scan# 1823
 Delta R.T. 0.00 min
 Lab File: BM019597.D
 Acq: 30 Mar 2019 01:41

Tgt Ion	Resp	Lower	Upper
163	113590		
194	3.5	4.0	6.0#
164	9.8	8.4	12.6

