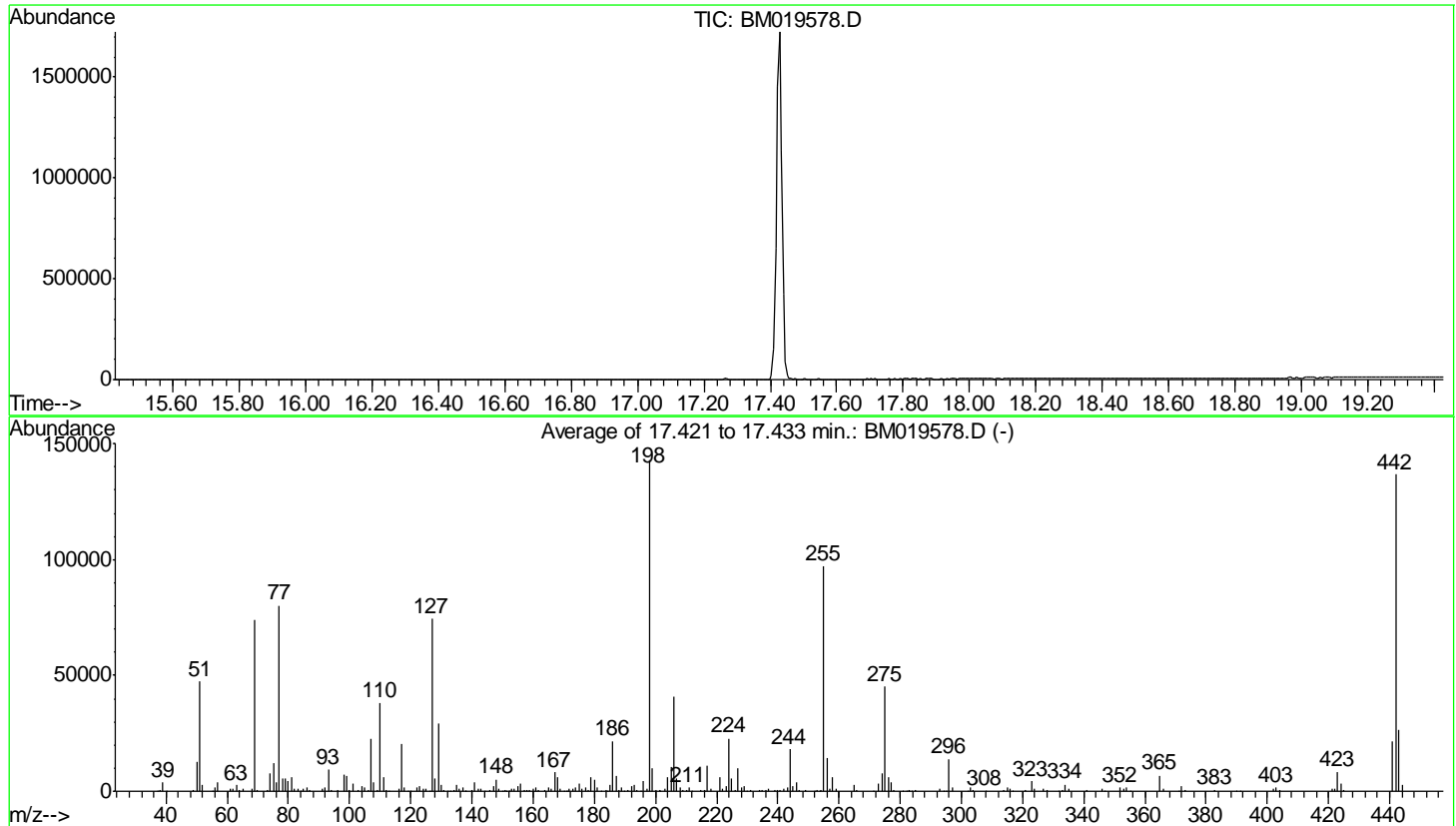


Data Path : Z:\SVOASRV\HPCHEM1\BNA_M\DATA\BM032919\
 Data File : BM019578.D
 Acq On : 29 Mar 2019 14:08
 Operator : JU/SJ
 Sample : DFTPP58
 Misc :
 ALS Vial : 1 Sample Multiplier: 1

Instrument :
 BNA_M
 ClientSampleId :
 DFTPP58

Integration File: LSCINT.P

Method : Z:\SVOASRV\HPCHEM1\BNA_M\METHODS\SOM-EPA-BM032219MA.M
 Title : SVOA CALIBRATION
 Last Update : Mon Apr 01 05:52:57 2019



AutoFind: Scans 2454, 2455, 2456; Background Corrected with Scan 2449

| Target Mass | Rel. to Mass | Lower Limit% | Upper Limit% | Rel. Abn% | Raw Abn | Result Pass/Fail |
|-------------|--------------|--------------|--------------|-----------|---------|------------------|
| 51 | 198 | 10 | 80 | 33.1 | 47336 | PASS |
| 68 | 69 | 0.00 | 2 | 1.7 | 1261 | PASS |
| 69 | 198 | 0.00 | 100 | 51.6 | 73717 | PASS |
| 70 | 69 | 0.00 | 2 | 0.5 | 366 | PASS |
| 127 | 198 | 10 | 80 | 52.1 | 74458 | PASS |
| 197 | 198 | 0.00 | 2 | 0.9 | 1220 | PASS |
| 198 | 198 | 100 | 100 | 100.0 | 142944 | PASS |
| 199 | 198 | 5 | 9 | 6.8 | 9791 | PASS |
| 275 | 198 | 10 | 60 | 31.6 | 45106 | PASS |
| 365 | 198 | 1 | 100 | 4.7 | 6727 | PASS |
| 441 | 198 | 0.01 | 100 | 15.1 | 21527 | PASS |
| 442 | 198 | 50 | 100 | 95.6 | 136634 | PASS |
| 443 | 442 | 15 | 24 | 19.4 | 26552 | PASS |

| m/z | Abundance |
|--------|-----------|
| 37.00 | 367.0 |
| 38.00 | 950.0 |
| 39.00 | 4296.0 |
| 40.00 | 608.0 |
| 49.10 | 479.0 |
| 50.00 | 15282.0 |
| 51.00 | 55960.0 |
| 52.00 | 3194.0 |
| 56.00 | 2093.0 |
| 57.00 | 4493.0 |
| 61.00 | 1083.0 |
| 62.00 | 1215.0 |
| 63.00 | 2831.0 |
| 64.10 | 607.0 |
| 65.00 | 1376.0 |
| 68.10 | 1493.0 |
| 69.00 | 84488.0 |
| 69.90 | 520.0 |
| 73.00 | 1402.0 |
| 74.00 | 8190.0 |
| 75.00 | 13777.0 |
| 76.00 | 4626.0 |
| 77.00 | 89768.0 |
| 78.00 | 6466.0 |
| 79.00 | 6172.0 |
| 80.00 | 5243.0 |
| 81.00 | 6680.0 |
| 82.00 | 1580.0 |
| 83.00 | 1512.0 |
| 84.00 | 329.0 |
| 84.90 | 1316.0 |
| 86.00 | 1924.0 |
| 87.00 | 793.0 |
| 91.00 | 1523.0 |
| 92.00 | 1924.0 |
| 93.00 | 10417.0 |
| 93.90 | 899.0 |
| 96.10 | 421.0 |
| 98.00 | 7500.0 |
| 99.00 | 7593.0 |
| 99.90 | 582.0 |
| 101.00 | 3419.0 |
| 102.90 | 780.0 |
| 104.00 | 2385.0 |
| 105.00 | 1880.0 |
| 105.90 | 606.0 |
| 107.00 | 25208.0 |
| 108.00 | 4310.0 |
| 109.00 | 683.0 |
| 110.00 | 42752.0 |
| 111.00 | 6878.0 |
| 112.00 | 828.0 |
| 116.00 | 1238.0 |
| 117.00 | 23328.0 |
| 117.90 | 1853.0 |
| 120.00 | 397.0 |
| 122.00 | 1585.0 |
| 123.00 | 2446.0 |
| 124.00 | 1191.0 |
| 125.00 | 978.0 |
| 126.20 | 486.0 |
| 127.00 | 82224.0 |
| 128.00 | 6390.0 |
| 129.00 | 31592.0 |
| 130.00 | 3031.0 |
| 131.00 | 607.0 |
| 131.90 | 421.0 |
| 133.90 | 896.0 |
| 135.00 | 3070.0 |
| 136.00 | 954.0 |
| 137.00 | 1681.0 |
| 137.80 | 547.0 |
| 140.00 | 424.0 |
| 141.00 | 4338.0 |
| 142.00 | 1163.0 |
| 143.00 | 581.0 |
| 146.00 | 934.0 |
| 147.00 | 2975.0 |
| 148.00 | 5654.0 |
| 148.90 | 1161.0 |
| 150.00 | 343.0 |
| 151.00 | 482.0 |
| 151.90 | 401.0 |
| 153.00 | 1168.0 |
| 154.00 | 931.0 |
| 154.90 | 2262.0 |
| 156.00 | 3486.0 |
| 157.00 | 607.0 |
| 157.90 | 691.0 |
| 158.90 | 418.0 |
| 159.90 | 1252.0 |

Instrument :
BNA_M
ClientSampleId :
DFTPP58

| | |
|--------|----------|
| 160.90 | 2051.0 |
| 161.90 | 622.0 |
| 163.90 | 339.0 |
| 165.00 | 2061.0 |
| 165.90 | 1223.0 |
| 167.00 | 8636.0 |
| 168.00 | 6798.0 |
| 168.90 | 937.0 |
| 171.90 | 829.0 |
| 172.90 | 1022.0 |
| 174.00 | 1755.0 |
| 175.00 | 3404.0 |
| 176.00 | 1026.0 |
| 177.00 | 1518.0 |
| 177.90 | 585.0 |
| 178.90 | 6752.0 |
| 180.00 | 5347.0 |
| 180.90 | 2129.0 |
| 182.10 | 504.0 |
| 183.90 | 505.0 |
| 185.00 | 2840.0 |
| 186.00 | 21216.0 |
| 187.00 | 6917.0 |
| 188.00 | 1104.0 |
| 189.00 | 1486.0 |
| 189.90 | 325.0 |
| 190.90 | 975.0 |
| 192.00 | 2000.0 |
| 193.00 | 2638.0 |
| 193.90 | 478.0 |
| 195.00 | 306.0 |
| 196.00 | 4433.0 |
| 197.00 | 1207.0 |
| 197.90 | 144384.0 |
| 198.90 | 10137.0 |
| 199.90 | 751.0 |
| 201.30 | 579.0 |
| 202.90 | 1175.0 |
| 204.00 | 6343.0 |
| 205.00 | 10799.0 |
| 206.00 | 41808.0 |
| 207.00 | 6883.0 |
| 208.00 | 1538.0 |
| 208.90 | 625.0 |
| 210.10 | 757.0 |
| 210.90 | 1460.0 |
| 211.80 | 349.0 |
| 214.90 | 544.0 |
| 215.90 | 795.0 |
| 217.00 | 10992.0 |
| 218.00 | 1303.0 |
| 221.00 | 6122.0 |
| 222.90 | 2318.0 |
| 224.00 | 23432.0 |
| 225.00 | 5550.0 |
| 226.00 | 529.0 |
| 227.00 | 9735.0 |
| 228.00 | 1552.0 |
| 228.90 | 2135.0 |
| 229.90 | 324.0 |
| 231.00 | 722.0 |
| 233.90 | 620.0 |
| 234.90 | 831.0 |
| 235.90 | 340.0 |
| 236.90 | 1371.0 |
| 238.90 | 425.0 |
| 239.90 | 510.0 |
| 240.80 | 544.0 |
| 242.00 | 924.0 |
| 243.00 | 1470.0 |
| 244.00 | 17752.0 |
| 245.00 | 2078.0 |
| 246.00 | 3424.0 |
| 247.00 | 942.0 |
| 248.90 | 712.0 |
| 252.90 | 456.0 |
| 254.10 | 931.0 |
| 255.00 | 91992.0 |
| 256.00 | 13694.0 |
| 257.00 | 1283.0 |
| 258.00 | 5393.0 |
| 258.90 | 906.0 |
| 265.00 | 2837.0 |
| 266.00 | 439.0 |
| 271.00 | 358.0 |
| 273.00 | 2877.0 |
| 274.00 | 6819.0 |
| 275.00 | 40496.0 |
| 276.00 | 5936.0 |
| 277.00 | 4144.0 |
| 277.90 | 822.0 |
| 281.10 | 415.0 |
| 282.90 | 674.0 |
| 284.90 | 756.0 |
| 292.90 | 852.0 |

Instrument :
BNA_M
ClientSampleId :
DFTPP58

| | |
|--------|----------|
| 296.00 | 13684.0 |
| 297.00 | 1907.0 |
| 301.90 | 320.0 |
| 303.00 | 1765.0 |
| 304.00 | 509.0 |
| 313.90 | 744.0 |
| 314.90 | 1770.0 |
| 315.90 | 650.0 |
| 321.00 | 395.0 |
| 323.00 | 3568.0 |
| 324.00 | 881.0 |
| 326.90 | 897.0 |
| 328.00 | 315.0 |
| 331.90 | 300.0 |
| 332.90 | 353.0 |
| 334.00 | 2375.0 |
| 335.00 | 662.0 |
| 341.00 | 578.0 |
| 345.90 | 886.0 |
| 352.00 | 1312.0 |
| 353.00 | 913.0 |
| 354.00 | 1190.0 |
| 364.90 | 5022.0 |
| 365.90 | 894.0 |
| 372.00 | 2116.0 |
| 373.00 | 503.0 |
| 382.90 | 602.0 |
| 402.10 | 846.0 |
| 403.00 | 1398.0 |
| 403.90 | 402.0 |
| 421.00 | 936.0 |
| 422.00 | 921.0 |
| 423.00 | 6773.0 |
| 424.00 | 3020.0 |
| 425.00 | 556.0 |
| 441.00 | 16374.0 |
| 442.00 | 106352.0 |
| 443.00 | 20424.0 |
| 444.00 | 2037.0 |

Instrument :
BNA_M
ClientSampleId :
DFTPP58

| m/z | Abundance |
|--------|-----------|
| 38.00 | 900.0 |
| 39.00 | 4407.0 |
| 40.00 | 663.0 |
| 48.90 | 512.0 |
| 50.00 | 15136.0 |
| 51.00 | 55688.0 |
| 52.00 | 3345.0 |
| 55.10 | 402.0 |
| 56.00 | 1770.0 |
| 57.00 | 4159.0 |
| 61.00 | 1000.0 |
| 62.00 | 1098.0 |
| 63.00 | 3489.0 |
| 63.90 | 368.0 |
| 65.10 | 1491.0 |
| 67.90 | 1417.0 |
| 69.00 | 87208.0 |
| 70.00 | 579.0 |
| 73.10 | 1177.0 |
| 74.00 | 9488.0 |
| 75.00 | 14401.0 |
| 76.10 | 5007.0 |
| 77.00 | 95840.0 |
| 78.00 | 6802.0 |
| 79.00 | 6670.0 |
| 80.00 | 4908.0 |
| 81.00 | 7172.0 |
| 81.90 | 1440.0 |
| 83.00 | 1411.0 |
| 83.90 | 350.0 |
| 85.00 | 1191.0 |
| 86.00 | 1960.0 |
| 87.00 | 945.0 |
| 91.00 | 1477.0 |
| 92.00 | 1621.0 |
| 93.00 | 11489.0 |
| 94.00 | 739.0 |
| 96.10 | 396.0 |
| 98.00 | 8438.0 |
| 99.00 | 7313.0 |
| 100.00 | 694.0 |
| 101.00 | 3805.0 |
| 102.90 | 987.0 |
| 104.00 | 2323.0 |
| 104.90 | 1962.0 |
| 106.00 | 625.0 |
| 107.00 | 25816.0 |
| 108.00 | 4271.0 |
| 108.90 | 829.0 |
| 110.00 | 45416.0 |
| 111.00 | 7323.0 |
| 112.00 | 1027.0 |
| 113.00 | 385.0 |
| 116.00 | 1475.0 |
| 117.00 | 23552.0 |
| 118.00 | 1659.0 |
| 119.00 | 312.0 |
| 121.90 | 1661.0 |
| 123.00 | 2804.0 |
| 124.00 | 1513.0 |
| 124.90 | 1304.0 |
| 127.00 | 87792.0 |
| 128.00 | 6769.0 |
| 129.00 | 35360.0 |
| 130.00 | 2986.0 |
| 130.90 | 688.0 |
| 132.80 | 398.0 |
| 134.00 | 885.0 |
| 135.00 | 2727.0 |
| 135.90 | 1036.0 |
| 137.00 | 1816.0 |
| 138.00 | 369.0 |
| 140.00 | 554.0 |
| 141.00 | 4931.0 |
| 142.00 | 1758.0 |
| 142.90 | 1287.0 |
| 144.00 | 378.0 |
| 145.90 | 808.0 |
| 147.00 | 2407.0 |
| 147.90 | 5865.0 |
| 148.90 | 1242.0 |
| 149.90 | 357.0 |
| 150.90 | 577.0 |
| 151.40 | 358.0 |
| 152.10 | 365.0 |
| 152.90 | 1519.0 |
| 154.00 | 1015.0 |
| 155.00 | 2534.0 |
| 156.00 | 4079.0 |
| 157.10 | 778.0 |
| 157.80 | 1139.0 |

Instrument :
BNA_M
ClientSampleId :
DFTPP58

| | |
|--------|----------|
| 159.00 | 741.0 |
| 160.00 | 1638.0 |
| 161.00 | 2166.0 |
| 161.90 | 576.0 |
| 163.90 | 372.0 |
| 164.90 | 2043.0 |
| 166.00 | 1499.0 |
| 167.00 | 9277.0 |
| 168.00 | 6462.0 |
| 169.00 | 1070.0 |
| 169.90 | 373.0 |
| 170.90 | 508.0 |
| 171.90 | 1169.0 |
| 172.90 | 1002.0 |
| 174.00 | 1992.0 |
| 175.00 | 3827.0 |
| 175.90 | 1223.0 |
| 176.90 | 1680.0 |
| 178.00 | 695.0 |
| 178.90 | 6418.0 |
| 180.00 | 5604.0 |
| 181.00 | 2113.0 |
| 181.90 | 306.0 |
| 184.10 | 801.0 |
| 185.00 | 3832.0 |
| 186.00 | 26144.0 |
| 187.00 | 7808.0 |
| 187.90 | 856.0 |
| 189.00 | 2064.0 |
| 189.80 | 373.0 |
| 190.90 | 978.0 |
| 192.00 | 2597.0 |
| 193.00 | 3004.0 |
| 194.00 | 634.0 |
| 196.00 | 5307.0 |
| 197.00 | 1431.0 |
| 197.90 | 172608.0 |
| 198.90 | 11691.0 |
| 200.00 | 806.0 |
| 201.50 | 998.0 |
| 202.90 | 1488.0 |
| 204.00 | 6996.0 |
| 205.00 | 12731.0 |
| 206.00 | 49112.0 |
| 207.00 | 7573.0 |
| 208.00 | 1866.0 |
| 208.90 | 712.0 |
| 210.20 | 596.0 |
| 211.00 | 2069.0 |
| 215.00 | 575.0 |
| 216.10 | 814.0 |
| 216.90 | 13595.0 |
| 218.00 | 1501.0 |
| 221.00 | 7608.0 |
| 221.80 | 1731.0 |
| 223.00 | 2534.0 |
| 224.00 | 25776.0 |
| 225.00 | 6592.0 |
| 226.00 | 918.0 |
| 227.00 | 11789.0 |
| 228.00 | 2011.0 |
| 228.90 | 2218.0 |
| 229.90 | 400.0 |
| 231.00 | 974.0 |
| 233.90 | 649.0 |
| 234.90 | 758.0 |
| 235.90 | 543.0 |
| 236.90 | 1559.0 |
| 238.90 | 351.0 |
| 240.00 | 508.0 |
| 240.90 | 524.0 |
| 242.00 | 1193.0 |
| 243.00 | 1715.0 |
| 244.00 | 21936.0 |
| 245.00 | 2459.0 |
| 246.00 | 4296.0 |
| 247.00 | 823.0 |
| 249.00 | 710.0 |
| 251.90 | 315.0 |
| 253.00 | 664.0 |
| 254.10 | 1246.0 |
| 255.00 | 119928.0 |
| 256.00 | 17816.0 |
| 257.00 | 1713.0 |
| 258.00 | 7425.0 |
| 258.90 | 1310.0 |
| 265.00 | 3078.0 |
| 266.00 | 560.0 |
| 272.90 | 4353.0 |
| 274.00 | 9475.0 |
| 275.00 | 57128.0 |
| 276.00 | 7332.0 |
| 277.00 | 4764.0 |
| 278.00 | 1023.0 |
| 281.00 | 570.0 |

Instrument :
BNA_M
ClientSampleId :
DFTPP58

| | |
|--------|----------|
| 283.10 | 420.0 |
| 283.90 | 549.0 |
| 285.00 | 745.0 |
| 292.90 | 1149.0 |
| 294.10 | 337.0 |
| 295.00 | 481.0 |
| 296.00 | 16424.0 |
| 297.00 | 2369.0 |
| 301.90 | 434.0 |
| 303.00 | 1858.0 |
| 303.90 | 385.0 |
| 307.90 | 324.0 |
| 314.00 | 940.0 |
| 315.00 | 1713.0 |
| 315.90 | 1125.0 |
| 316.90 | 370.0 |
| 320.90 | 684.0 |
| 323.00 | 5275.0 |
| 324.00 | 853.0 |
| 326.90 | 1241.0 |
| 328.00 | 633.0 |
| 332.00 | 338.0 |
| 332.90 | 555.0 |
| 334.00 | 3824.0 |
| 334.90 | 1158.0 |
| 341.00 | 887.0 |
| 345.90 | 1399.0 |
| 346.90 | 378.0 |
| 352.00 | 1566.0 |
| 353.00 | 1463.0 |
| 354.00 | 1945.0 |
| 355.10 | 318.0 |
| 365.00 | 8345.0 |
| 365.90 | 1332.0 |
| 371.00 | 525.0 |
| 372.00 | 2755.0 |
| 372.90 | 724.0 |
| 383.00 | 1110.0 |
| 391.10 | 305.0 |
| 402.00 | 1091.0 |
| 403.00 | 1788.0 |
| 403.90 | 775.0 |
| 421.00 | 1746.0 |
| 422.00 | 1706.0 |
| 423.00 | 9992.0 |
| 424.00 | 3679.0 |
| 425.00 | 436.0 |
| 441.00 | 26328.0 |
| 442.00 | 163776.0 |
| 443.00 | 32696.0 |
| 444.00 | 3131.0 |

Instrument :
BNA_M
ClientSampleId :
DFTPP58

| m/z | Abundance |
|--------|-----------|
| 38.00 | 454.0 |
| 39.00 | 2349.0 |
| 40.00 | 560.0 |
| 49.10 | 413.0 |
| 50.00 | 8264.0 |
| 51.00 | 30360.0 |
| 52.00 | 1584.0 |
| 56.00 | 1008.0 |
| 57.00 | 2572.0 |
| 61.10 | 530.0 |
| 62.00 | 800.0 |
| 63.10 | 1690.0 |
| 65.00 | 852.0 |
| 67.90 | 874.0 |
| 69.00 | 49456.0 |
| 73.10 | 1150.0 |
| 74.00 | 4922.0 |
| 75.00 | 7969.0 |
| 76.00 | 2321.0 |
| 77.00 | 54968.0 |
| 78.00 | 3504.0 |
| 79.00 | 4102.0 |
| 80.00 | 2888.0 |
| 81.00 | 3768.0 |
| 82.00 | 1061.0 |
| 82.90 | 923.0 |
| 85.00 | 651.0 |
| 86.00 | 1528.0 |
| 87.00 | 659.0 |
| 91.00 | 1140.0 |
| 91.90 | 901.0 |
| 93.00 | 5904.0 |
| 94.00 | 529.0 |
| 96.00 | 501.0 |
| 98.00 | 4829.0 |
| 99.00 | 4226.0 |
| 101.00 | 1992.0 |
| 102.90 | 653.0 |
| 104.00 | 1512.0 |
| 104.90 | 1084.0 |
| 106.00 | 527.0 |
| 107.00 | 16111.0 |
| 108.00 | 2922.0 |
| 110.00 | 26384.0 |
| 111.00 | 4255.0 |
| 111.90 | 371.0 |
| 115.90 | 846.0 |
| 117.00 | 14306.0 |
| 118.00 | 1361.0 |
| 121.90 | 1534.0 |
| 123.00 | 1946.0 |
| 123.90 | 640.0 |
| 125.00 | 655.0 |
| 127.00 | 53360.0 |
| 128.00 | 4165.0 |
| 129.00 | 21584.0 |
| 130.00 | 1835.0 |
| 130.90 | 376.0 |
| 132.80 | 373.0 |
| 134.00 | 620.0 |
| 134.90 | 1768.0 |
| 136.00 | 707.0 |
| 137.10 | 1008.0 |
| 140.00 | 325.0 |
| 141.00 | 2872.0 |
| 141.90 | 1109.0 |
| 142.90 | 683.0 |
| 145.90 | 605.0 |
| 147.00 | 1749.0 |
| 147.90 | 3673.0 |
| 148.90 | 655.0 |
| 151.00 | 524.0 |
| 152.90 | 983.0 |
| 153.80 | 677.0 |
| 155.00 | 1721.0 |
| 156.00 | 2592.0 |
| 157.10 | 410.0 |
| 158.00 | 655.0 |
| 159.00 | 339.0 |
| 160.00 | 783.0 |
| 160.90 | 1132.0 |
| 162.00 | 320.0 |
| 164.00 | 404.0 |
| 164.90 | 919.0 |
| 166.00 | 1032.0 |
| 167.00 | 6628.0 |
| 167.90 | 4447.0 |
| 168.90 | 619.0 |
| 171.10 | 311.0 |
| 171.90 | 607.0 |
| 173.00 | 902.0 |

Instrument :
BNA_M
ClientSampleId :
DFTPP58

| | |
|--------|----------|
| 173.90 | 1345.0 |
| 175.00 | 2477.0 |
| 176.00 | 548.0 |
| 176.90 | 1116.0 |
| 177.90 | 391.0 |
| 179.00 | 5252.0 |
| 179.90 | 3993.0 |
| 180.90 | 1561.0 |
| 183.90 | 443.0 |
| 185.00 | 2382.0 |
| 186.00 | 17280.0 |
| 187.00 | 4610.0 |
| 188.10 | 580.0 |
| 188.90 | 960.0 |
| 191.00 | 511.0 |
| 192.00 | 1677.0 |
| 193.00 | 1954.0 |
| 195.90 | 3753.0 |
| 197.10 | 1024.0 |
| 197.90 | 111840.0 |
| 198.90 | 7547.0 |
| 200.00 | 614.0 |
| 201.60 | 590.0 |
| 202.90 | 902.0 |
| 204.00 | 4453.0 |
| 205.00 | 7952.0 |
| 206.00 | 31408.0 |
| 207.00 | 5062.0 |
| 208.00 | 1499.0 |
| 209.00 | 635.0 |
| 210.10 | 681.0 |
| 210.90 | 1357.0 |
| 214.80 | 436.0 |
| 216.10 | 700.0 |
| 217.00 | 8770.0 |
| 218.00 | 1018.0 |
| 221.00 | 5297.0 |
| 221.80 | 1123.0 |
| 223.00 | 1984.0 |
| 224.00 | 19160.0 |
| 225.00 | 4746.0 |
| 226.00 | 583.0 |
| 227.00 | 8223.0 |
| 227.90 | 1049.0 |
| 229.00 | 1833.0 |
| 230.90 | 806.0 |
| 233.90 | 585.0 |
| 235.00 | 670.0 |
| 235.90 | 309.0 |
| 237.00 | 916.0 |
| 238.90 | 362.0 |
| 240.90 | 490.0 |
| 242.00 | 959.0 |
| 243.10 | 1159.0 |
| 244.00 | 14849.0 |
| 245.00 | 2049.0 |
| 246.00 | 3450.0 |
| 247.00 | 444.0 |
| 249.10 | 550.0 |
| 253.00 | 471.0 |
| 253.80 | 441.0 |
| 255.00 | 79856.0 |
| 256.00 | 11521.0 |
| 257.00 | 825.0 |
| 258.00 | 5319.0 |
| 259.00 | 547.0 |
| 264.90 | 2089.0 |
| 265.90 | 357.0 |
| 273.00 | 2874.0 |
| 274.00 | 6130.0 |
| 275.00 | 37696.0 |
| 276.00 | 5140.0 |
| 277.00 | 3299.0 |
| 277.90 | 609.0 |
| 281.00 | 344.0 |
| 282.00 | 332.0 |
| 283.00 | 519.0 |
| 284.90 | 538.0 |
| 292.90 | 699.0 |
| 295.10 | 300.0 |
| 296.00 | 11616.0 |
| 296.90 | 1553.0 |
| 303.00 | 1451.0 |
| 313.90 | 520.0 |
| 314.90 | 1731.0 |
| 315.90 | 848.0 |
| 320.90 | 459.0 |
| 323.00 | 4120.0 |
| 324.00 | 813.0 |
| 326.90 | 857.0 |
| 328.00 | 331.0 |
| 333.00 | 458.0 |
| 334.00 | 2691.0 |
| 335.00 | 736.0 |
| 341.00 | 579.0 |

Instrument :
BNA_M
ClientSampleId :
DFTPP58

| | |
|--------|----------|
| 345.90 | 741.0 |
| 352.00 | 1578.0 |
| 353.00 | 1053.0 |
| 354.00 | 1471.0 |
| 365.00 | 6814.0 |
| 365.90 | 971.0 |
| 372.00 | 2456.0 |
| 373.00 | 663.0 |
| 383.00 | 790.0 |
| 390.00 | 301.0 |
| 402.00 | 809.0 |
| 403.00 | 1595.0 |
| 404.00 | 438.0 |
| 421.00 | 1280.0 |
| 422.00 | 1306.0 |
| 423.00 | 8405.0 |
| 424.00 | 3074.0 |
| 425.10 | 364.0 |
| 441.00 | 21880.0 |
| 442.00 | 139776.0 |
| 443.00 | 26536.0 |
| 444.00 | 2576.0 |

Instrument :
BNA_M
ClientSampleId :
DFTPP58

Scan 2449 (17.392 min): BM019578.D
DFTPP58

| m/z | Abundance |
|--------|-----------|
| 40.00 | 391.0 |
| 73.00 | 706.0 |
| 207.00 | 1020.0 |
| 280.90 | 320.0 |

Instrument :
BNA_M
ClientSampleId :
DFTPP58