

Data Path : Z:\SVOASRV\HPCHEM1\BNA\_M\DATA\BM040219\  
 Data File : BM019716.D  
 Acq On : 03 Apr 2019 06:18  
 Operator : JU/SJ  
 Sample : K2168-14  
 Misc :  
 ALS Vial : 25 Sample Multiplier: 1

Instrument :  
 BNA\_M  
 ClientSampleId :  
 BF639

Quant Time: Apr 03 07:06:53 2019  
 Quant Method : Z:\SVOASRV\HPCHEM1\BNA\_M\METHODS\SOM-EPA-BM032219MA.M  
 Quant Title : SVOA CALIBRATION  
 QLast Update : Wed Apr 03 07:04:07 2019  
 Response via : Initial Calibration

Internal Standards	R.T.	QIon	Response	Conc	Units	Dev(Min)
1) 1,4-Dichlorobenzene-d4	7.57	152	163649	20.00	ng/ul	-0.01
18) Naphthalene-d8	10.35	136	757024	20.00	ng/ul	-0.01
36) Acenaphthene-d10	14.23	164	460684	20.00	ng/ul	-0.01
62) Phenanthrene-d10	16.99	188	1035621	20.00	ng/ul	0.00
78) Chrysene-d12	21.20	240	1170333	20.00	ng/ul	0.00
86) Perylene-d12	23.40	264	1250231	20.00	ng/ul	0.00

## System Monitoring Compounds

3) 1,4-Dioxane-d8	3.12	96	22025	5.27	ng/uL	0.00
5) Phenol-d5	6.76	99	230235	15.80	ng/ul	0.00
7) Bis-(2-Chloroethyl)ether-d	6.92	67	166578	17.07	ng/ul	-0.01
9) 2-Chlorophenol-d4	7.10	132	191250	17.32	ng/ul	0.00
13) 4-Methylphenol-d8	8.29	113	193291	17.67	ng/ul	0.00
19) Nitrobenzene-d5	8.74	128	95362	17.66	ng/ul	-0.01
22) 2-Nitrophenol-d4	9.45	143	111106	18.49	ng/ul	-0.01
26) 2,4-Dichlorophenol-d3	9.99	165	177717	15.67	ng/ul	0.00
29) 4-Chloroaniline-d4	10.52	131	257285	18.89	ng/ul	0.00
44) Dimethylphthalate-d6	13.65	166	692260	18.62	ng/ul	-0.01
47) Acenaphthylene-d8	13.92	160	783248	16.85	ng/ul	-0.01
52) 4-Nitrophenol-d4	14.49	143	78593	13.49	ng/ul	0.01
58) Fluorene-d10	15.23	176	563336	17.59	ng/ul	0.00
63) 4,6-Dinitro-2-methylphenol	15.38	200	92996	13.58	ng/ul	0.00
71) Anthracene-d10	17.09	188	860640	17.32	ng/ul	-0.01
79) Pyrene-d10	19.40	212	898689	16.62	ng/ul	0.00
90) Benzo(a)pyrene-d12	23.26	264	974521	14.70	ng/ul	0.00

## Target Compounds

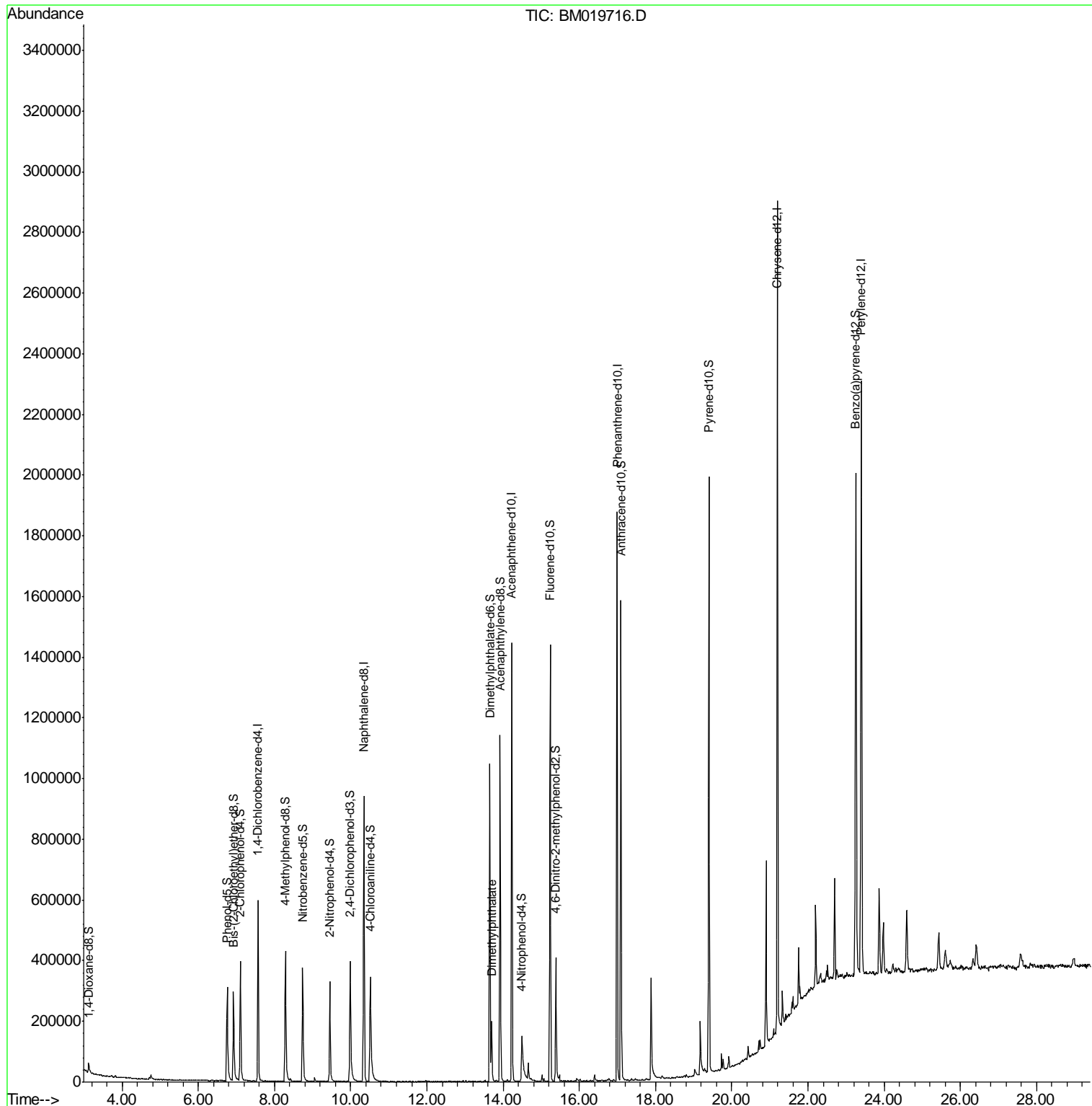
					Qvalue
45) Dimethylphthalate	13.70	163	128237	3.438 ng/ul#	98

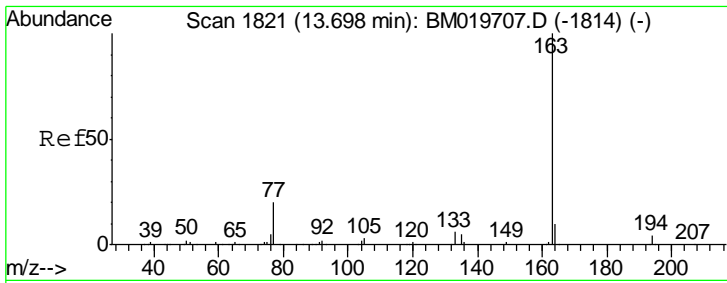
(#) = qualifier out of range (m) = manual integration (+) = signals summed

Data Path : Z:\SVOASRV\HPCHEM1\BNA\_M\DATA\BM040219\  
 Data File : BM019716.D  
 Acq On : 03 Apr 2019 06:18  
 Operator : JU/SJ  
 Sample : K2168-14  
 Misc :  
 ALS Vial : 25 Sample Multiplier: 1

Instrument :  
 BNA\_M  
 ClientSampleId :  
 BF639

Quant Time: Apr 03 07:06:53 2019  
 Quant Method : Z:\SVOASRV\HPCHEM1\BNA\_M\METHODS\SOM-EPA-BM032219MA.M  
 Quant Title : SVOA CALIBRATION  
 QLast Update : Wed Apr 03 07:04:07 2019  
 Response via : Initial Calibration





#45  
 Dimethylphthalate  
 Concen: 3.438 ng/ul  
 RT: 13.70 min Scan# 1821  
 Delta R.T. -0.01 min  
 Lab File: BM019716.D  
 Acq: 03 Apr 2019 06:18

**Instrument :**  
 BNA\_M  
**ClientSampled :**  
 BF639

Tgt Ion:163 Resp: 128237

Ion	Ratio	Lower	Upper
163	100		
194	3.8	4.0	6.0#
164	10.1	8.4	12.6

