

Data Path : Z:\SVOASRV\HPCHEM1\BNA_M\DATA\BM040219\
 Data File : BM019697.D
 Acq On : 02 Apr 2019 18:37
 Operator : JU/SJ
 Sample : K2148-07
 Misc :
 ALS Vial : 7 Sample Multiplier: 1

Instrument :
 BNA_M
 ClientSampleId :
 BF5G4

Integration Parameters: LSCINT.P

Integrator: RTE
 Smoothing : OFF
 Sampling : 1
 Start Thrs: 0.2
 Stop Thrs : 0

Filtering: 5
 Min Area: 0.1 % of largest Peak
 Max Peaks: 100
 Peak Location: TOP

If leading or trailing edge < 100 prefer < Baseline drop else tangent >
 Peak separation: 5

Method : Z:\SVOASRV\HPCHEM1\BNA_M\METHODS\SOM-EPA-BM032219MA.M
 Title : SVOA CALIBRATION

Signal : TIC

peak #	R.T. min	first scan	max scan	last scan	PK TY	peak height	corr. area	corr. % max.	% of total
1	3.122	20	23	31	rVB	32427	52840	1.68%	0.163%
2	3.628	107	109	115	rVB3	8948	12308	0.39%	0.038%
3	3.716	121	124	131	rVB3	8446	15910	0.51%	0.049%
4	4.716	290	294	298	rBV2	9767	12995	0.41%	0.040%
5	4.757	299	301	305	rVB4	4189	5434	0.17%	0.017%
6	6.757	635	641	658	rBV	213437	451264	14.38%	1.394%
7	6.928	664	670	687	rBV	183482	368192	11.73%	1.137%
8	7.104	694	700	713	rBV	293453	491007	15.64%	1.516%
9	7.569	773	779	788	rBV	490747	803228	25.59%	2.481%
10	8.292	895	902	920	rBV	263361	538580	17.16%	1.663%
11	8.410	920	922	930	rVB2	6507	11695	0.37%	0.036%
12	8.745	969	979	993	rBV	236756	465125	14.82%	1.436%
13	9.063	1029	1033	1039	rVB	11478	16187	0.52%	0.050%
14	9.457	1092	1100	1115	rBV	213052	401334	12.79%	1.239%
15	9.992	1182	1191	1217	rBV	247758	571689	18.21%	1.765%
16	10.351	1245	1252	1262	rBV	719595	1202205	38.30%	3.713%
17	10.522	1274	1281	1296	rBV	190216	485604	15.47%	1.500%
18	11.986	1528	1530	1536	rVB4	2700	3852	0.12%	0.012%
19	13.027	1702	1707	1711	rBV4	3721	6214	0.20%	0.019%
20	13.110	1715	1721	1728	rVB	68797	108847	3.47%	0.336%
21	13.651	1807	1813	1818	rBV	692074	1000603	31.88%	3.090%
22	13.704	1818	1822	1834	rVB	157122	256060	8.16%	0.791%
23	13.921	1852	1859	1877	rVB	808773	1178390	37.54%	3.639%
24	14.110	1889	1891	1895	rBV2	2894	4115	0.13%	0.013%
25	14.233	1905	1912	1925	rBV2	1161472	1763667	56.19%	5.447%
26	14.504	1952	1958	1976	rBV2	96820	317803	10.12%	0.981%
27	14.662	1980	1985	1998	rVB	78655	136099	4.34%	0.420%
28	14.804	2005	2009	2013	rVV6	3200	3726	0.12%	0.012%
29	14.845	2013	2016	2022	rVB6	2359	3814	0.12%	0.012%
30	15.021	2042	2046	2052	rVV	9018	12868	0.41%	0.040%
31	15.068	2052	2054	2060	rVB4	5629	7583	0.24%	0.023%
32	15.233	2076	2082	2093	rBV	1061017	1542420	49.14%	4.763%
33	15.351	2097	2102	2103	rVV2	10632	12168	0.39%	0.038%
34	15.386	2103	2108	2120	rVV	264436	439684	14.01%	1.358%

Data Path : Z:\SVOASRV\HPCHEM1\BNA_M\DATA\BM040219\
 Data File : BM019697.D
 Acq On : 02 Apr 2019 18:37
 Operator : JU/SJ
 Sample : K2148-07
 Misc :
 ALS Vial : 7 Sample Multiplier: 1

Instrument :
 BNA_M
 ClientSampleId :
 BF5G4

Integration Parameters: LSCINT.P

Integrator: RTE
 Smoothing : OFF
 Sampling : 1
 Start Thrs: 0.2
 Stop Thrs : 0

Filtering: 5
 Min Area: 0.1 % of largest Peak
 Max Peaks: 100
 Peak Location: TOP

If leading or trailing edge < 100 prefer < Baseline drop else tangent >
 Peak separation: 5

Method : Z:\SVOASRV\HPCHEM1\BNA_M\METHODS\SOM-EPA-BM032219MA.M
 Title : SVOA CALIBRATION

35	15.480	2120	2124	2128	rVB3	14302	20630	0.66%	0.064%
36	15.786	2173	2176	2180	rBV5	3385	5898	0.19%	0.018%
37	15.945	2197	2203	2206	rBV6	5900	11326	0.36%	0.035%
38	15.998	2209	2212	2214	rVV3	5163	7753	0.25%	0.024%
39	16.021	2214	2216	2220	rVB2	4719	4824	0.15%	0.015%
40	16.315	2261	2266	2267	rBV2	3569	3649	0.12%	0.011%
41	16.398	2273	2280	2286	rBV2	38766	66996	2.13%	0.207%
42	16.539	2301	2304	2310	rVV2	7648	10302	0.33%	0.032%
43	16.598	2310	2314	2317	rVB4	3085	3998	0.13%	0.012%
44	16.733	2332	2337	2339	rBV5	5781	9929	0.32%	0.031%
45	16.756	2339	2341	2343	rVV2	7277	8912	0.28%	0.028%
46	16.780	2343	2345	2355	rVV4	8251	13317	0.42%	0.041%
47	16.898	2360	2365	2369	rVB6	7056	11859	0.38%	0.037%
48	16.992	2375	2381	2392	rBV	1600554	2201547	70.14%	6.799%
49	17.092	2392	2398	2409	rVV2	1128664	1620046	51.61%	5.003%
50	17.280	2427	2430	2435	rVB5	5503	7345	0.23%	0.023%
51	17.333	2435	2439	2441	rBV5	3115	4883	0.16%	0.015%
52	17.374	2442	2446	2453	rVB2	19280	33903	1.08%	0.105%
53	17.474	2459	2463	2467	rBV4	6992	8702	0.28%	0.027%
54	17.533	2472	2473	2480	rVB6	3414	4795	0.15%	0.015%
55	17.621	2483	2488	2489	rBV4	2712	3642	0.12%	0.011%
56	17.656	2492	2494	2499	rVB4	5722	5358	0.17%	0.017%
57	17.715	2499	2504	2508	rBV4	11844	15629	0.50%	0.048%
58	17.756	2508	2511	2515	rBV6	5794	9975	0.32%	0.031%
59	17.827	2518	2523	2526	rBV3	21305	30427	0.97%	0.094%
60	17.886	2528	2533	2542	rBV	334348	511733	16.30%	1.580%
61	17.962	2542	2546	2554	rVV	57753	88575	2.82%	0.274%
62	18.056	2558	2562	2563	rBV4	4244	6193	0.20%	0.019%
63	18.168	2577	2581	2586	rBV4	16020	26038	0.83%	0.080%
64	18.297	2601	2603	2608	rVB5	5951	7945	0.25%	0.025%
65	18.350	2610	2612	2615	rBV4	3263	3336	0.11%	0.010%
66	18.627	2657	2659	2660	rBV2	3817	3377	0.11%	0.010%
67	18.645	2660	2662	2665	rVB4	5736	4813	0.15%	0.015%
68	18.750	2676	2680	2686	rBV	111972	158662	5.05%	0.490%
69	18.809	2686	2690	2693	rBV4	24017	29615	0.94%	0.091%
70	18.956	2713	2715	2716	rBV2	5845	3497	0.11%	0.011%
71	19.027	2724	2727	2730	rBV3	34719	52390	1.67%	0.162%

Data Path : Z:\SVOASRV\HPCHEM1\BNA_M\DATA\BM040219\
 Data File : BM019697.D
 Acq On : 02 Apr 2019 18:37
 Operator : JU/SJ
 Sample : K2148-07
 Misc :
 ALS Vial : 7 Sample Multiplier: 1

Instrument :
 BNA_M
 ClientSampleId :
 BF5G4

Integration Parameters: LSCINT.P

Integrator: RTE
 Smoothing : OFF
 Sampling : 1
 Start Thrs: 0.2
 Stop Thrs : 0

Filtering: 5
 Min Area: 0.1 % of largest Peak
 Max Peaks: 100
 Peak Location: TOP

If leading or trailing edge < 100 prefer < Baseline drop else tangent >
 Peak separation: 5

Method : Z:\SVOASRV\HPCHEM1\BNA_M\METHODS\SOM-EPA-BM032219MA.M
 Title : SVOA CALIBRATION

72	19.068	2730	2734	2743	rVB2	89221	163271	5.20%	0.504%
73	19.174	2748	2752	2765	rBV	168589	301877	9.62%	0.932%
74	19.397	2785	2790	2804	rBV2	1427766	2085159	66.43%	6.439%
75	19.733	2844	2847	2851	rBV2	83488	96498	3.07%	0.298%
76	19.774	2851	2854	2862	rVB	70299	86891	2.77%	0.268%
77	20.339	2945	2950	2954	rBV	444348	493027	15.71%	1.523%
78	20.433	2963	2966	2970	rBV2	35310	38648	1.23%	0.119%
79	20.715	3011	3014	3017	rBV2	67429	75368	2.40%	0.233%
80	20.750	3017	3020	3025	rVB	46166	53023	1.69%	0.164%
81	20.903	3042	3046	3054	rVB2	337521	442407	14.09%	1.366%
82	21.103	3077	3080	3085	rBV	106843	134788	4.29%	0.416%
83	21.203	3091	3097	3109	rBV	2444617	3139002	100.00%	9.694%
84	21.333	3117	3119	3128	rVB2	87213	122936	3.92%	0.380%
85	21.762	3189	3192	3195	rBV	141423	153405	4.89%	0.474%
86	22.209	3265	3268	3276	rVB2	230643	342845	10.92%	1.059%
87	22.703	3348	3352	3357	rBV	267573	396382	12.63%	1.224%
88	23.268	3441	3448	3461	rVB2	1325402	2644430	84.24%	8.167%
89	23.409	3466	3472	3482	rVB	1708860	3042240	96.92%	9.395%
90	23.874	3548	3551	3560	rVB	265533	474072	15.10%	1.464%
91	24.597	3671	3674	3683	rVB2	190908	369813	11.78%	1.142%

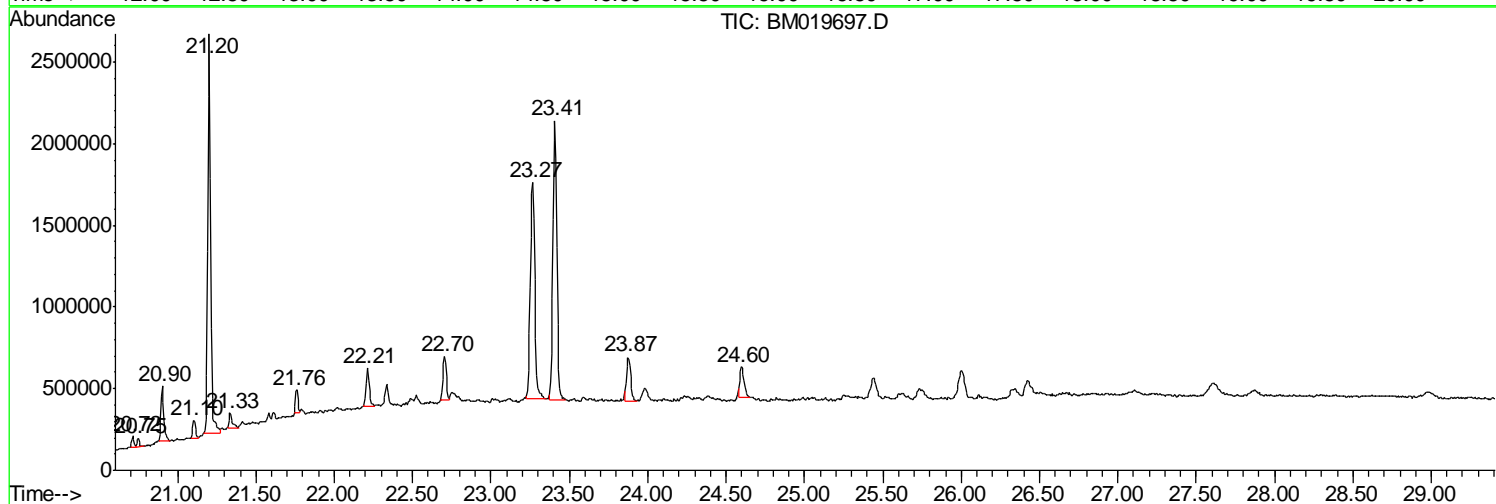
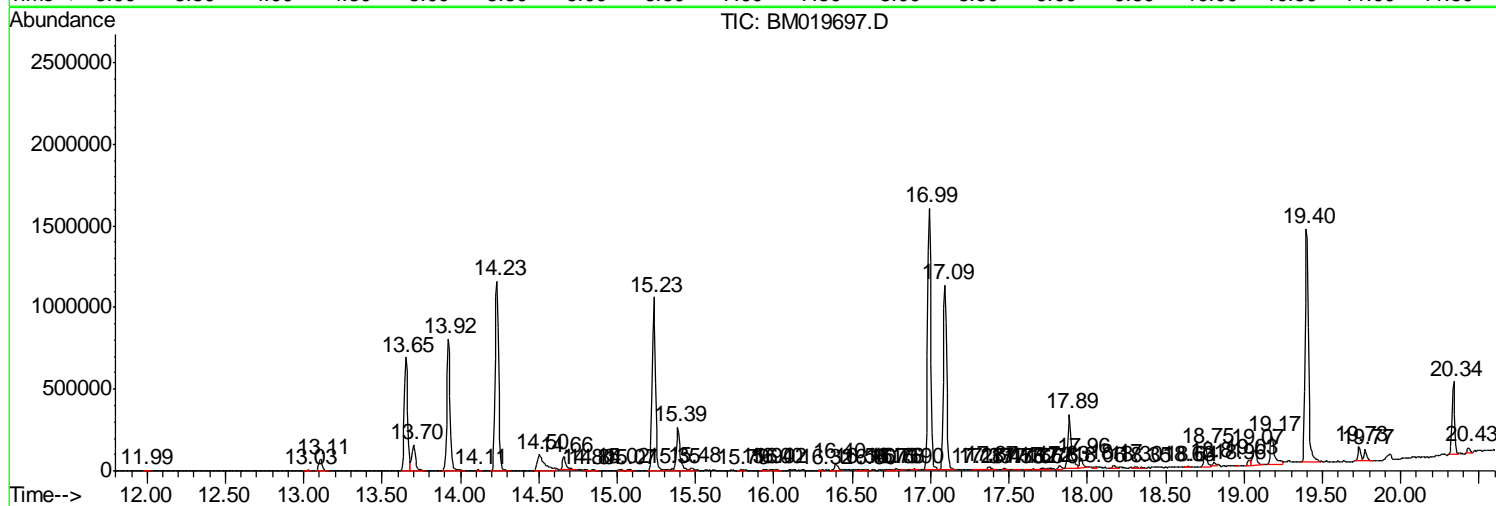
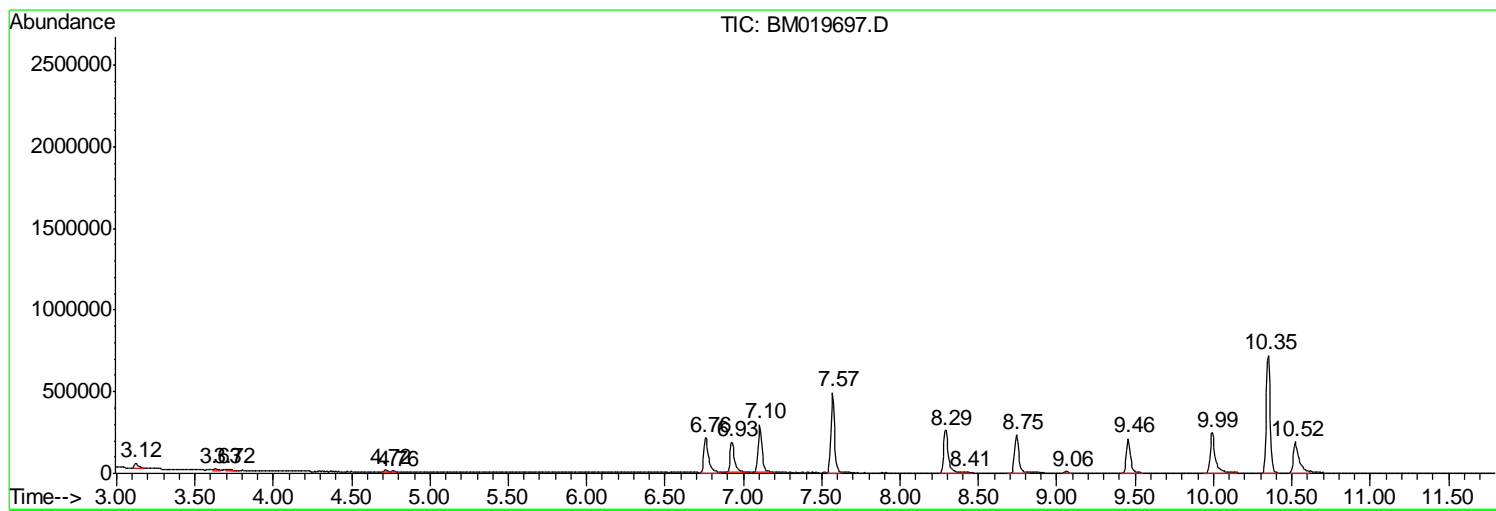
Sum of corrected areas: 32381411

Data Path : Z:\SVOASRV\HPCHEM1\BNA_M\DATA\BM040219\
Data File : BM019697.D
Acq On : 02 Apr 2019 18:37
Operator : JU/SJ
Sample : K2148-07
Misc :
ALS Vial : 7 Sample Multiplier: 1

Instrument :
BNA_M
ClientSampled :
BF5G4

Quant Method : Z:\SVOASRV\HPCHEM1\BNA_M\METHODS\SOM-EPA-BM032219MA.M
Quant Title : SVOA CALIBRATION

TIC Library : C:\DATABASE\NIST02.L
TIC Integration Parameters: LSCINT.P



Data Path : Z:\SVOASRV\HPCHEM1\BNA_M\DATA\BM040219\
 Data File : BM019697.D
 Acq On : 02 Apr 2019 18:37
 Operator : JU/SJ
 Sample : K2148-07
 Misc :
 ALS Vial : 7 Sample Multiplier: 1

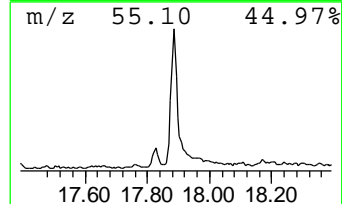
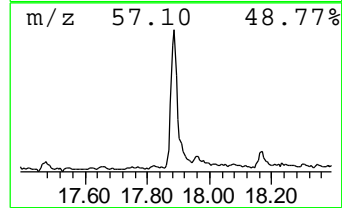
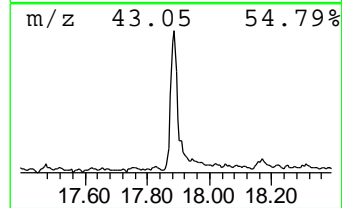
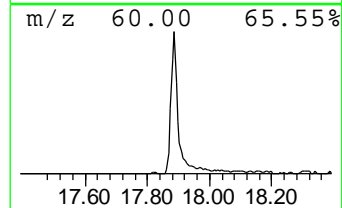
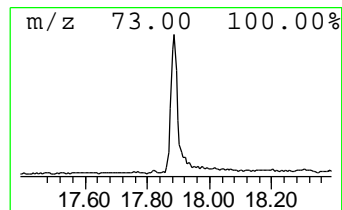
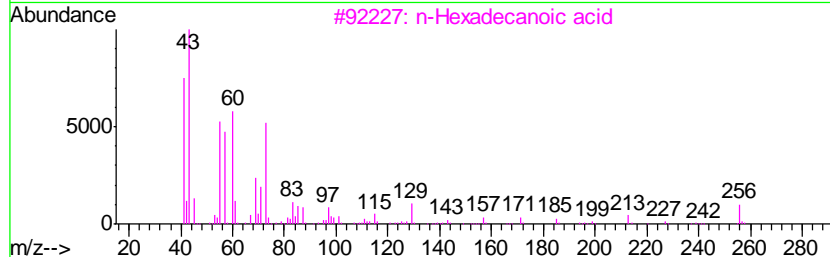
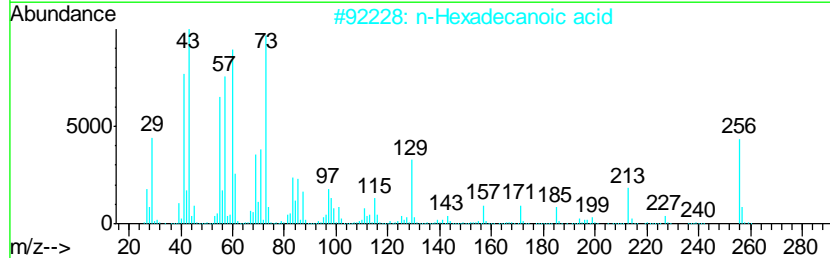
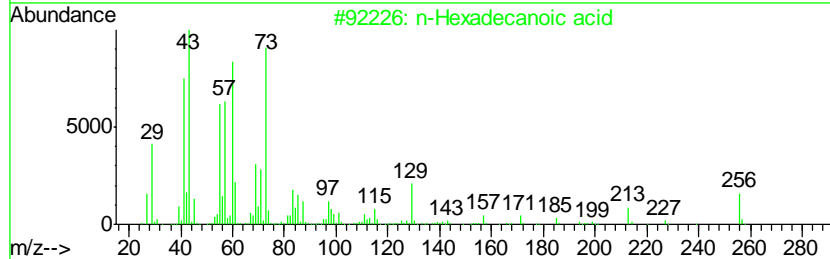
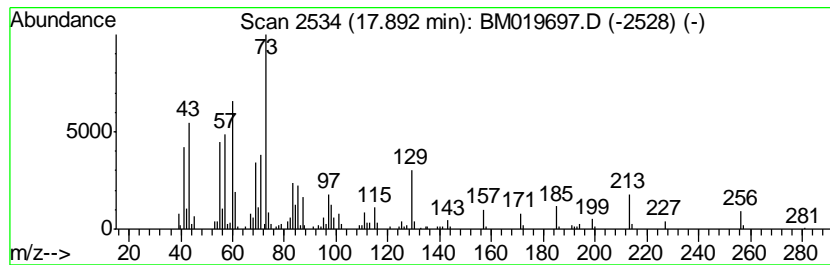
Instrument :
 BNA_M
 ClientSampleID :
 BF5G4

Quant Method : Z:\SVOASRV\HPCHEM1\BNA_M\METHODS\SOM-EPA-BM032219MA.M
 Quant Title : SVOA CALIBRATION

TIC Library : C:\DATABASE\NIST02.L
 TIC Integration Parameters: LSCINT.P

 Peak Number 1 n-Hexadecanoic acid Concentration Rank 1

R.T.	EstConc	Area	Relative to ISTD	R.T.		
17.89	4.65 ng/ul	511733	Phenanthrene-d10	16.99		
Hit# of	5	Tentative ID	MW	MolForm	CAS#	Qual
1		n-Hexadecanoic acid	256	C16H32O2	000057-10-3	98
2		n-Hexadecanoic acid	256	C16H32O2	000057-10-3	98
3		n-Hexadecanoic acid	256	C16H32O2	000057-10-3	96
4		Tridecanoic acid	214	C13H26O2	000638-53-9	72
5		Tetradecanoic acid	228	C14H28O2	000544-63-8	72



Data Path : Z:\SVOASRV\HPCHEM1\BNA_M\DATA\BM040219\
 Data File : BM019697.D
 Acq On : 02 Apr 2019 18:37
 Operator : JU/SJ
 Sample : K2148-07
 Misc :
 ALS Vial : 7 Sample Multiplier: 1

Instrument :
 BNA_M
 ClientSampled :
 BF5G4

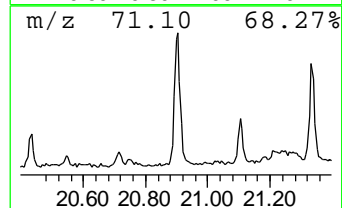
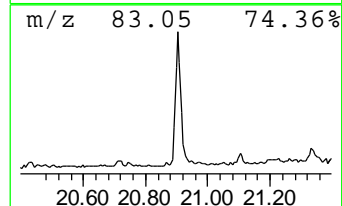
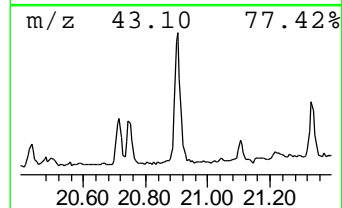
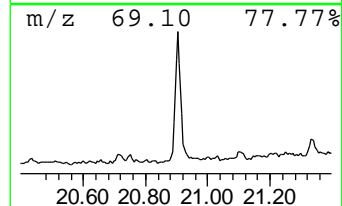
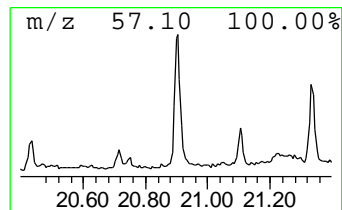
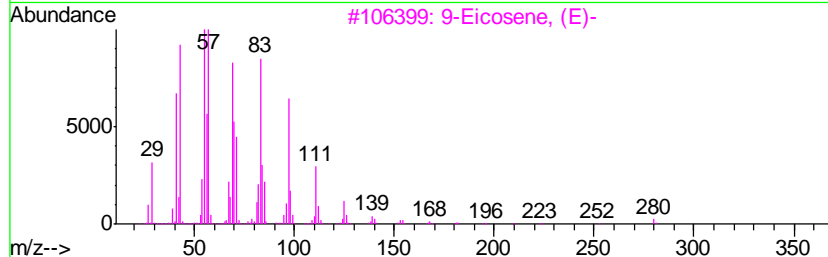
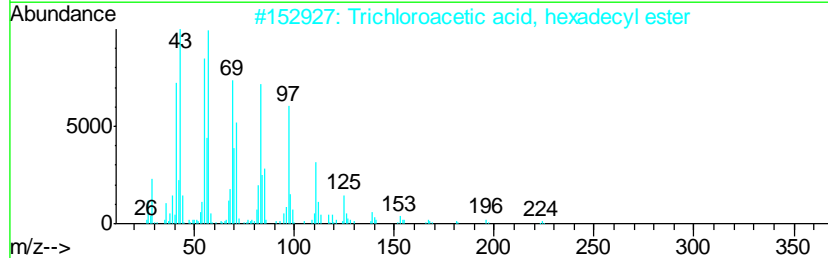
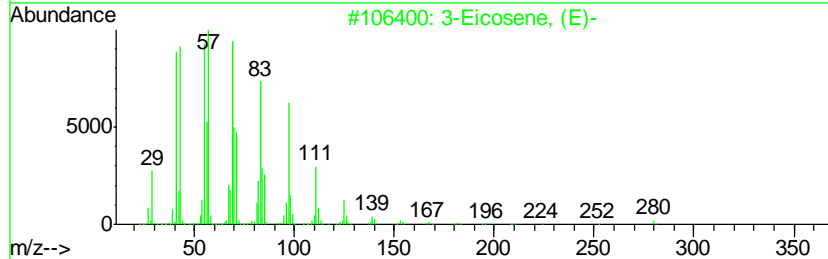
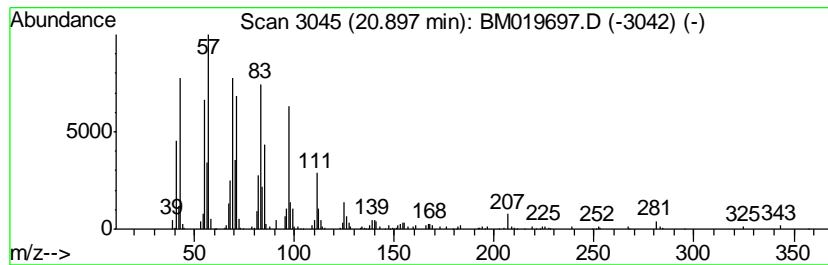
Quant Method : Z:\SVOASRV\HPCHEM1\BNA_M\METHODS\SOM-EPA-BM032219MA.M
 Quant Title : SVOA CALIBRATION

TIC Library : C:\DATABASE\NIST02.L
 TIC Integration Parameters: LSCINT.P

 Peak Number 2 (DEL) Alkane: Cyclic20.90 Concentration Rank 3

R.T.	EstConc	Area	Relative to ISTD	R.T.
20.90	2.82 ng/ul	442407	Chrysene-d12	21.20

Hit#	of	Tentative ID	MW	MolForm	CAS#	Qual
1	5	3-Eicosene, (E)-	280	C20H40	074685-33-9	91
2		Trichloroacetic acid, hexadecyl ...	386	C18H33Cl3O2	074339-54-1	91
3		9-Eicosene, (E)-	280	C20H40	074685-29-3	91
4		Heptafluorobutyric acid, n-penta...	424	C19H31F7O2	1000216-79-3	90
5		Trifluoroacetic acid, n-octadecy...	366	C20H37F3O2	079392-43-1	90



Data Path : Z:\SVOASRV\HPCHEM1\BNA_M\DATA\BM040219\
 Data File : BM019697.D
 Acq On : 02 Apr 2019 18:37
 Operator : JU/SJ
 Sample : K2148-07
 Misc :
 ALS Vial : 7 Sample Multiplier: 1

Instrument :
 BNA_M
 ClientSampleID :
 BF5G4

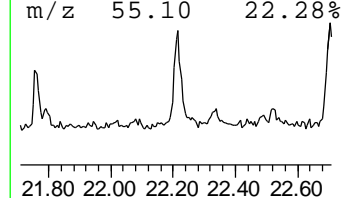
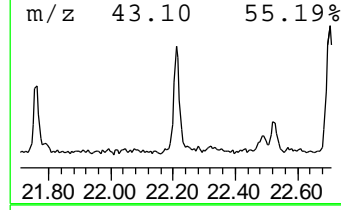
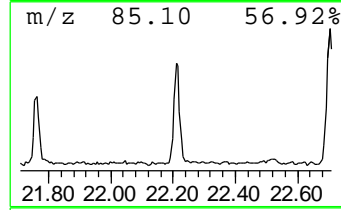
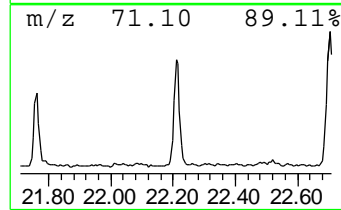
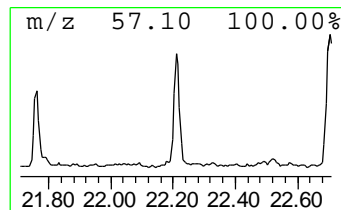
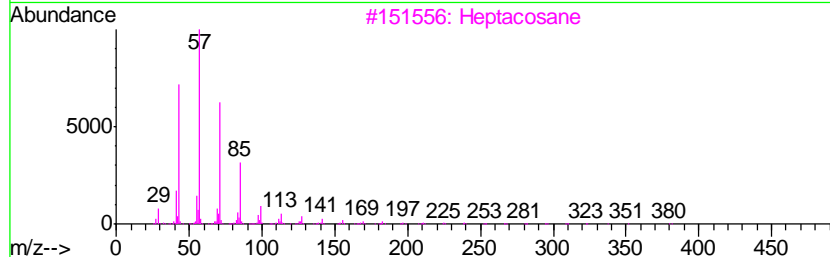
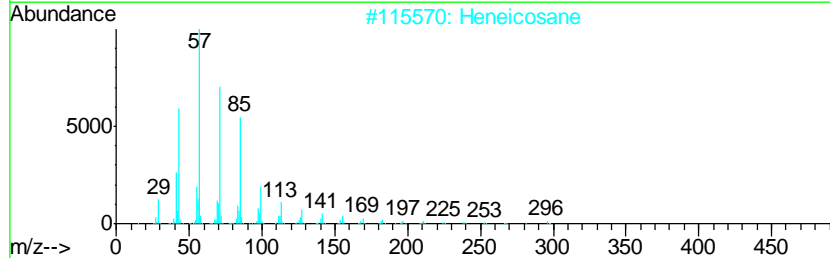
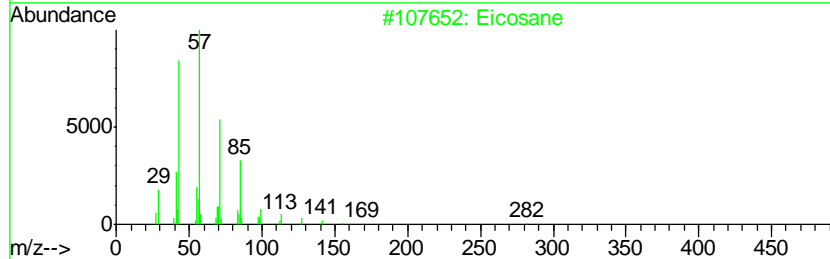
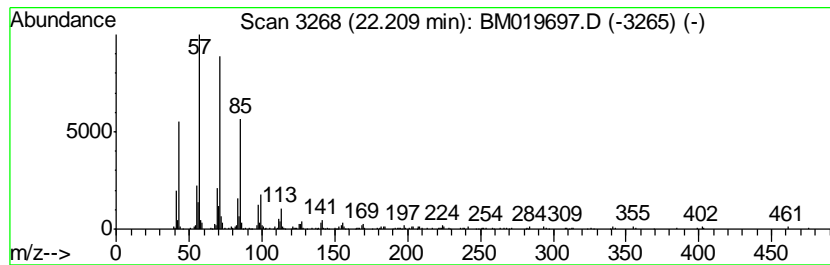
Quant Method : Z:\SVOASRV\HPCHEM1\BNA_M\METHODS\SOM-EPA-BM032219MA.M
 Quant Title : SVOA CALIBRATION

TIC Library : C:\DATABASE\NIST02.L
 TIC Integration Parameters: LSCINT.P

 Peak Number 3 (DEL) Alkane: Straight-Chai... Concentration Rank 6

R.T.	EstConc	Area	Relative to ISTD	R.T.
22.21	2.18 ng/ul	342845	Chrysene-d12	21.20

Hit#	of	Tentative ID	MW	MolForm	CAS#	Qual
1	5	Eicosane	282	C20H42	000112-95-8	91
2		Heneicosane	296	C21H44	000629-94-7	91
3		Heptacosane	380	C27H56	000593-49-7	91
4		Pentadecane, 8-heptyl-	310	C22H46	071005-15-7	90
5		Docosane, 9-butyl-	366	C26H54	055282-14-9	90



Data Path : Z:\SVOASRV\HPCHEM1\BNA_M\DATA\BM040219\
 Data File : BM019697.D
 Acq On : 02 Apr 2019 18:37
 Operator : JU/SJ
 Sample : K2148-07
 Misc :
 ALS Vial : 7 Sample Multiplier: 1

Instrument :
 BNA_M
 ClientSampled :
 BF5G4

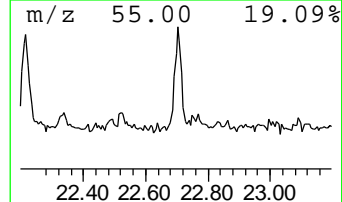
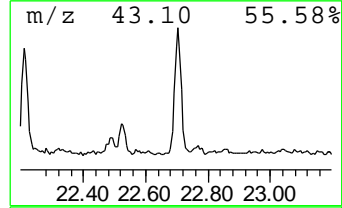
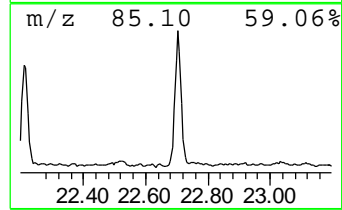
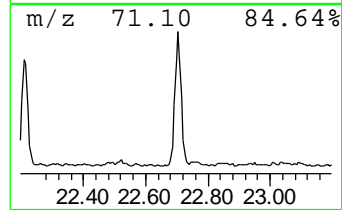
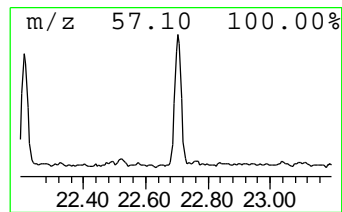
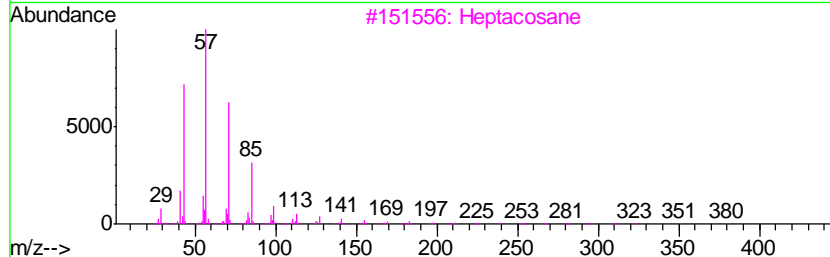
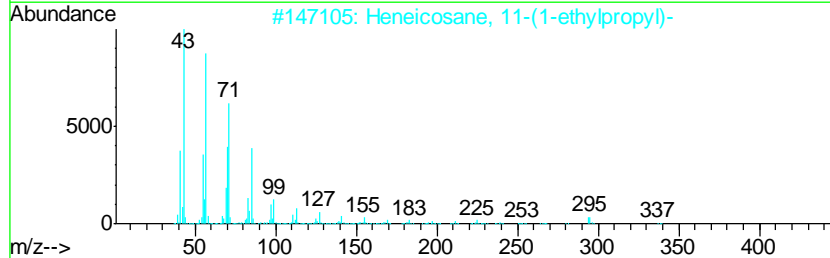
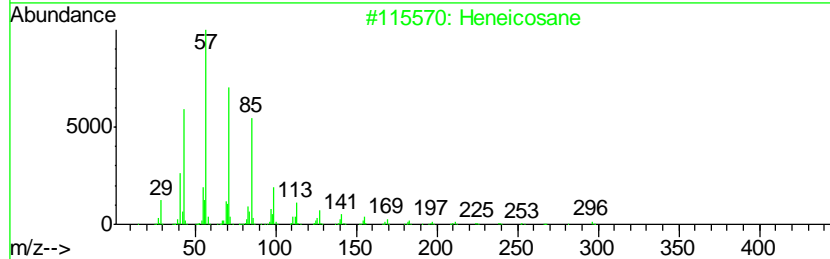
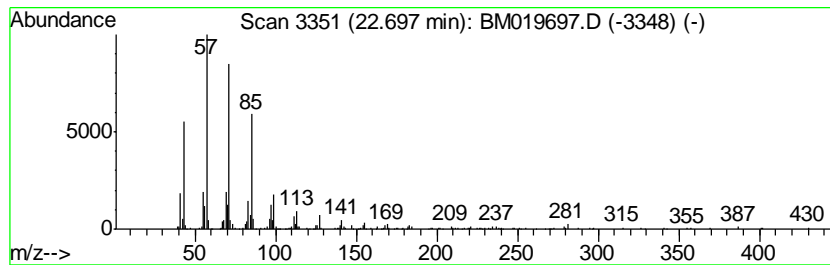
Quant Method : Z:\SVOASRV\HPCHEM1\BNA_M\METHODS\SOM-EPA-BM032219MA.M
 Quant Title : SVOA CALIBRATION

TIC Library : C:\DATABASE\NIST02.L
 TIC Integration Parameters: LSCINT.P

 Peak Number 4 (DEL) Alkane: Straight-Chai... Concentration Rank 4

R.T.	EstConc	Area	Relative to ISTD	R.T.
22.70	2.61 ng/ul	396382	Perylene-d12	23.41

Hit#	of	Tentative ID	MW	MolForm	CAS#	Qual
1	5	Heneicosane	296	C21H44	000629-94-7	91
2		Heneicosane, 11-(1-ethylpropyl)-	366	C26H54	055282-11-6	91
3		Heptacosane	380	C27H56	000593-49-7	74
4		Hexadecane, 4-methyl-	240	C17H36	025117-26-4	74
5		Octacosane	394	C28H58	000630-02-4	74



Data Path : Z:\SVOASRV\HPCHEM1\BNA_M\DATA\BM040219\
 Data File : BM019697.D
 Acq On : 02 Apr 2019 18:37
 Operator : JU/SJ
 Sample : K2148-07
 Misc :
 ALS Vial : 7 Sample Multiplier: 1

Instrument :
 BNA_M
 ClientSampled :
 BF5G4

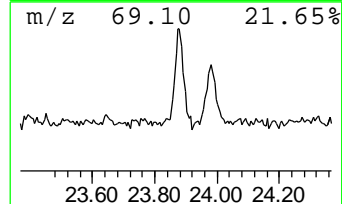
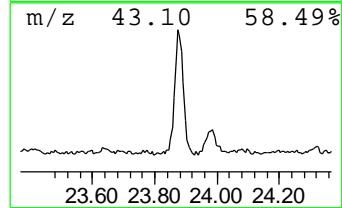
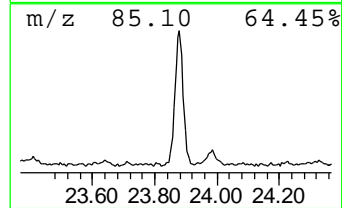
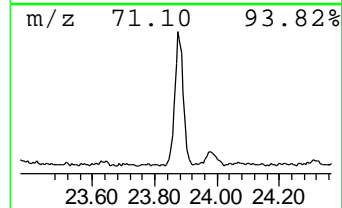
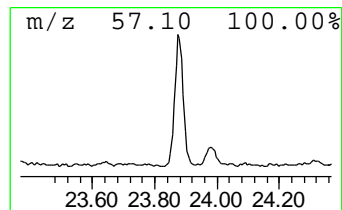
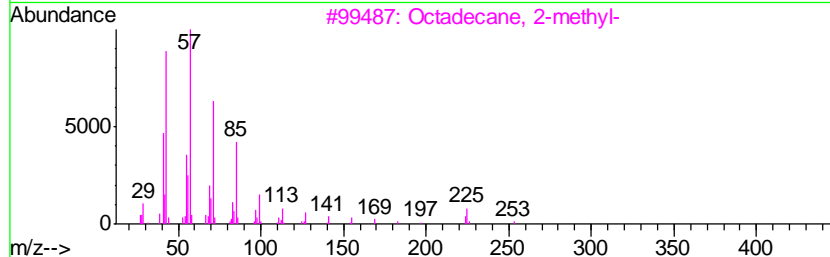
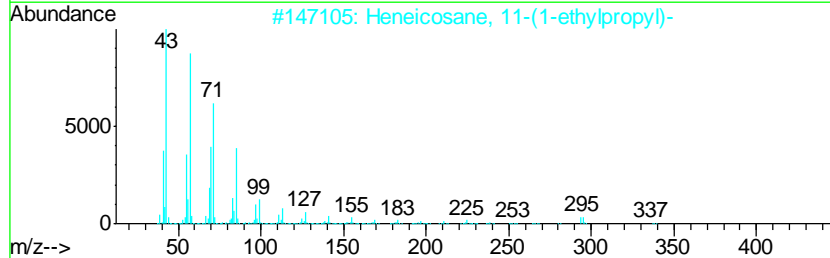
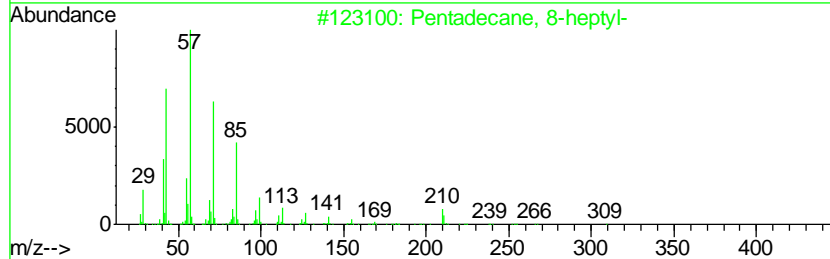
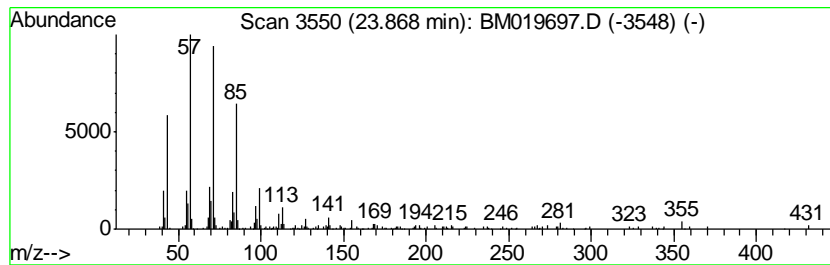
Quant Method : Z:\SVOASRV\HPCHEM1\BNA_M\METHODS\SOM-EPA-BM032219MA.M
 Quant Title : SVOA CALIBRATION

TIC Library : C:\DATABASE\NIST02.L
 TIC Integration Parameters: LSCINT.P

 Peak Number 5 (DEL) Alkane: Straight-Chai... Concentration Rank 2

R.T.	EstConc	Area	Relative to ISTD	R.T.
23.87	3.12 ng/ul	474072	Perylene-d12	23.41

Hit#	of	Tentative ID	MW	MolForm	CAS#	Qual
1	5	Pentadecane, 8-heptyl-	310	C22H46	071005-15-7	91
2		Heneicosane, 11-(1-ethylpropyl)-	366	C26H54	055282-11-6	91
3		Octadecane, 2-methyl-	268	C19H40	001560-88-9	90
4		Hexadecane	226	C16H34	000544-76-3	86
5		Heptacosane	380	C27H56	000593-49-7	74



Data Path : Z:\SVOASRV\HPCHEM1\BNA_M\DATA\BM040219\
 Data File : BM019697.D
 Acq On : 02 Apr 2019 18:37
 Operator : JU/SJ
 Sample : K2148-07
 Misc :
 ALS Vial : 7 Sample Multiplier: 1

Instrument :
 BNA_M
 ClientSampleID :
 BF5G4

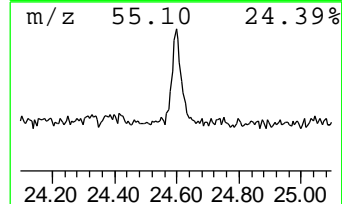
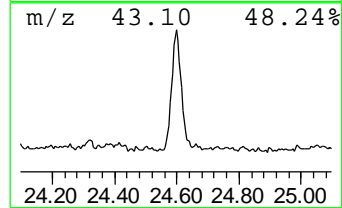
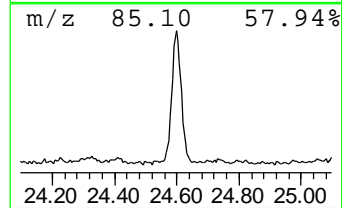
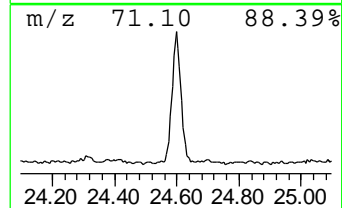
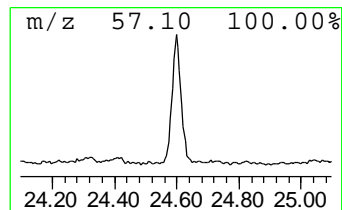
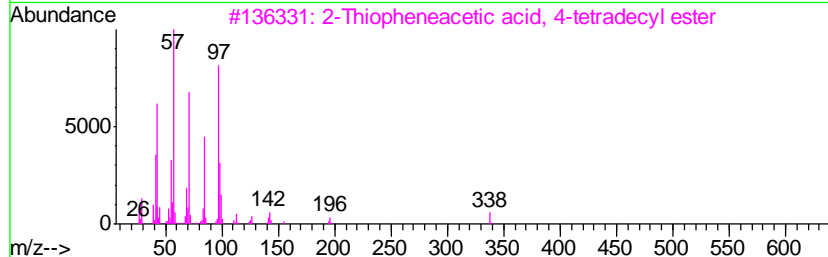
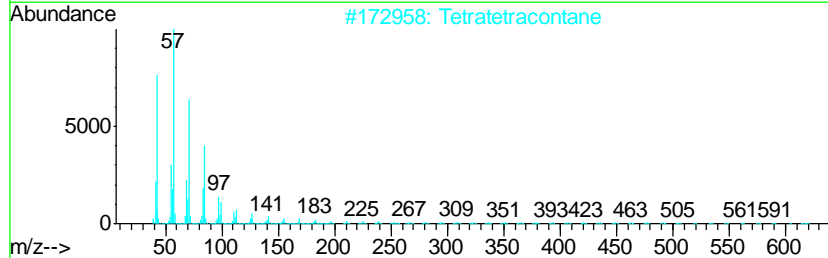
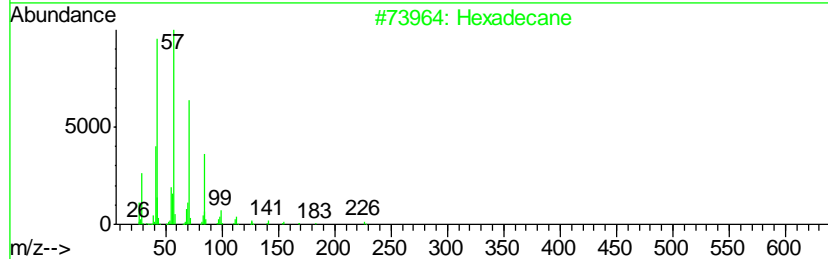
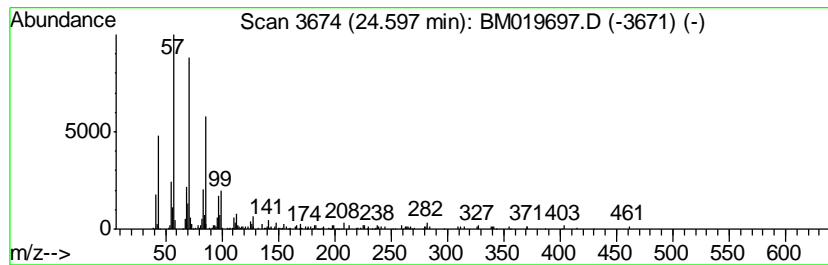
Quant Method : Z:\SVOASRV\HPCHEM1\BNA_M\METHODS\SOM-EPA-BM032219MA.M
 Quant Title : SVOA CALIBRATION

TIC Library : C:\DATABASE\NIST02.L
 TIC Integration Parameters: LSCINT.P

 Peak Number 6 (DEL) Alkane: Straight-Chai... Concentration Rank 5

R.T.	EstConc	Area	Relative to ISTD	R.T.
24.60	2.43 ng/ul	369813	Perylene-d12	23.41

Hit#	of	Tentative ID	MW	MolForm	CAS#	Qual
1	5	Hexadecane	226	C16H34	000544-76-3	93
2		Tetratetracontane	619	C44H90	007098-22-8	80
3		2-Thiopheneacetic acid, 4-tetrad...	338	C20H34O2S	1000280-67-0	72
4		Octacosane	394	C28H58	000630-02-4	72
5		Tridecane, 7-hexyl-	268	C19H40	007225-66-3	68



Data Path : Z:\SVOASRV\HPCHEM1\BNA_M\DATA\BM040219\
 Data File : BM019697.D
 Acq On : 02 Apr 2019 18:37
 Operator : JU/SJ
 Sample : K2148-07
 Misc :
 ALS Vial : 7 Sample Multiplier: 1

Instrument :
 BNA_M
 ClientSampleId :
 BF5G4

Quant Method : Z:\SVOASRV\HPCHEM1\BNA_M\METHODS\SOM-EPA-BM032219MA.M
 Quant Title : SVOA CALIBRATION

TIC Library : C:\DATABASE\NIST02.L
 TIC Integration Parameters: LSCINT.P

TIC Top Hit name	RT	EstConc	Units	Response	--Internal Standard--			
					#	RT	Resp	Conc
n-Hexadecanoic acid	17.89	4.7	ng/ul	511733	4	16.99	2201550	20.0
(DEL) Alkane: Cyc...	20.90	2.8	ng/ul	442407	5	21.20	3139000	20.0
(DEL) Alkane: Str...	22.21	2.2	ng/ul	342845	5	21.20	3139000	20.0
(DEL) Alkane: Str...	22.70	2.6	ng/ul	396382	6	23.41	3042240	20.0
(DEL) Alkane: Str...	23.87	3.1	ng/ul	474072	6	23.41	3042240	20.0
(DEL) Alkane: Str...	24.60	2.4	ng/ul	369813	6	23.41	3042240	20.0