

Data Path : Z:\SVOASRV\HPCHEM1\BNA_M\DATA\BM040219\
 Data File : BM019726.D
 Acq On : 03 Apr 2019 12:39
 Operator : JU/SJ
 Sample : K2168-05
 Misc :
 ALS Vial : 34 Sample Multiplier: 1

Instrument :
 BNA_M
 ClientSampleId :
 BF646

Integration Parameters: LSCINT.P

Integrator: RTE
 Smoothing : OFF
 Sampling : 1
 Start Thrs: 0.2
 Stop Thrs : 0

Filtering: 5
 Min Area: 0.1 % of largest Peak
 Max Peaks: 100
 Peak Location: TOP

If leading or trailing edge < 100 prefer < Baseline drop else tangent >
 Peak separation: 5

Method : Z:\SVOASRV\HPCHEM1\BNA_M\METHODS\SOM-EPA-BM032219MA.M
 Title : SVOA CALIBRATION

Signal : TIC

peak #	R.T. min	first scan	max scan	last scan	PK TY	peak height	corr. area	corr. % max.	% of total
1	3.116	20	22	37	rVB	42573	81679	2.61%	0.207%
2	3.622	105	108	112	rBV	16472	21319	0.68%	0.054%
3	3.810	137	140	146	rVB2	7889	12389	0.40%	0.031%
4	4.369	232	235	238	rBV5	3838	4637	0.15%	0.012%
5	4.716	288	294	298	rBV4	5502	10397	0.33%	0.026%
6	4.757	299	301	308	rVB5	3235	5754	0.18%	0.015%
7	6.751	634	640	654	rBV	425979	800668	25.55%	2.025%
8	6.922	663	669	686	rBV	360172	649698	20.73%	1.644%
9	7.098	693	699	715	rBV	516435	856912	27.34%	2.168%
10	7.563	772	778	786	rBV	485023	807026	25.75%	2.041%
11	7.633	786	790	797	rVB3	9995	20998	0.67%	0.053%
12	8.281	894	900	919	rBV	520126	972590	31.04%	2.460%
13	8.410	919	922	930	rVB2	12099	20901	0.67%	0.053%
14	8.733	970	977	992	rBV	457910	835337	26.66%	2.113%
15	9.057	1027	1032	1037	rBV2	14960	20266	0.65%	0.051%
16	9.451	1092	1099	1115	rBV	392179	720197	22.98%	1.822%
17	9.739	1139	1148	1149	rBV3	4434	8219	0.26%	0.021%
18	9.980	1183	1189	1210	rBV	569259	1118528	35.69%	2.829%
19	10.345	1244	1251	1264	rVB	779609	1309743	41.79%	3.313%
20	10.510	1272	1279	1303	rBV	420967	975836	31.14%	2.469%
21	11.910	1512	1517	1522	rBV4	8709	17001	0.54%	0.043%
22	11.963	1522	1526	1535	rVB	7252	15317	0.49%	0.039%
23	12.516	1616	1620	1624	rBV4	11108	20619	0.66%	0.052%
24	13.015	1702	1705	1709	rVB3	3328	4241	0.14%	0.011%
25	13.651	1806	1813	1817	rBV	1263923	1796971	57.34%	4.546%
26	13.698	1817	1821	1832	rVB	248408	376711	12.02%	0.953%
27	13.921	1851	1859	1874	rBV	1433136	2128716	67.93%	5.385%
28	14.110	1887	1891	1893	rBV2	3351	3464	0.11%	0.009%
29	14.227	1904	1911	1924	rBV2	1227049	1840825	58.74%	4.657%
30	14.486	1946	1955	1978	rBV2	204143	630967	20.13%	1.596%
31	14.657	1978	1984	1994	rVV	208029	317255	10.12%	0.803%
32	14.868	2019	2020	2027	rVB4	2529	3698	0.12%	0.009%
33	15.015	2042	2045	2050	rVB2	5384	7943	0.25%	0.020%
34	15.068	2050	2054	2057	rVV4	5649	7281	0.23%	0.018%

Data Path : Z:\SVOASRV\HPCHEM1\BNA_M\DATA\BM040219\
 Data File : BM019726.D
 Acq On : 03 Apr 2019 12:39
 Operator : JU/SJ
 Sample : K2168-05
 Misc :
 ALS Vial : 34 Sample Multiplier: 1

Instrument :
 BNA_M
 ClientSampleId :
 BF646

Integration Parameters: LSCINT.P

Integrator: RTE
 Smoothing : OFF
 Sampling : 1
 Start Thrs: 0.2
 Stop Thrs : 0

Filtering: 5
 Min Area: 0.1 % of largest Peak
 Max Peaks: 100
 Peak Location: TOP

If leading or trailing edge < 100 prefer < Baseline drop else tangent >
 Peak separation: 5

Method : Z:\SVOASRV\HPCHEM1\BNA_M\METHODS\SOM-EPA-BM032219MA.M
 Title : SVOA CALIBRATION

35	15.133	2061	2065	2067	rBV3	2618	3738	0.12%	0.009%
36	15.227	2075	2081	2091	rBV	1850953	2714964	86.63%	6.868%
37	15.380	2101	2107	2119	rBV	503278	736237	23.49%	1.862%
38	15.474	2119	2123	2128	rVB2	22490	34522	1.10%	0.087%
39	15.633	2147	2150	2153	rVB3	3124	4220	0.13%	0.011%
40	15.804	2176	2179	2182	rBV4	3094	4104	0.13%	0.010%
41	15.933	2195	2201	2207	rBV5	6386	10744	0.34%	0.027%
42	16.015	2212	2215	2220	rBV5	6605	7624	0.24%	0.019%
43	16.186	2238	2244	2246	rVB5	3982	5925	0.19%	0.015%
44	16.274	2257	2259	2263	rBV5	3685	5881	0.19%	0.015%
45	16.398	2275	2280	2285	rBV3	15325	29794	0.95%	0.075%
46	16.533	2300	2303	2308	rVB3	13136	19139	0.61%	0.048%
47	16.727	2332	2336	2340	rBV3	4607	7234	0.23%	0.018%
48	16.774	2342	2344	2349	rVV4	6234	9364	0.30%	0.024%
49	16.898	2363	2365	2370	rVB6	3187	3774	0.12%	0.010%
50	16.986	2374	2380	2390	rVV2	1532189	2168688	69.20%	5.486%
51	17.086	2390	2397	2414	rVB	1974155	2860629	91.28%	7.236%
52	17.327	2434	2438	2441	rBV4	3705	5882	0.19%	0.015%
53	17.374	2442	2446	2448	rVV5	3606	4953	0.16%	0.013%
54	17.474	2457	2463	2466	rBV5	3689	7291	0.23%	0.018%
55	17.715	2501	2504	2507	rVB5	2367	3201	0.10%	0.008%
56	17.880	2525	2532	2543	rBV	211224	327727	10.46%	0.829%
57	18.162	2577	2580	2586	rVB7	10626	12598	0.40%	0.032%
58	18.280	2596	2600	2602	rBV6	5864	9754	0.31%	0.025%
59	18.756	2677	2681	2684	rVB6	7542	8764	0.28%	0.022%
60	18.809	2684	2690	2693	rBV6	16639	27615	0.88%	0.070%
61	19.027	2723	2727	2735	rBV	31716	66085	2.11%	0.167%
62	19.174	2748	2752	2761	rBV	101068	166676	5.32%	0.422%
63	19.286	2767	2771	2778	rBV	22931	39303	1.25%	0.099%
64	19.397	2784	2790	2796	rBV	2279807	3133823	100.00%	7.927%
65	19.733	2844	2847	2850	rBV2	63686	65132	2.08%	0.165%
66	19.768	2850	2853	2861	rVB	120108	136293	4.35%	0.345%
67	19.927	2877	2880	2885	rVB	99384	115807	3.70%	0.293%
68	20.427	2962	2965	2969	rBV	195431	201801	6.44%	0.510%
69	20.709	3010	3013	3016	rBV2	71230	85511	2.73%	0.216%
70	20.744	3016	3019	3027	rVB	126568	156548	5.00%	0.396%
71	20.897	3041	3045	3052	rBV	355644	447478	14.28%	1.132%

Data Path : Z:\SVOASRV\HPCHEM1\BNA_M\DATA\BM040219\
Data File : BM019726.D
Acq On : 03 Apr 2019 12:39
Operator : JU/SJ
Sample : K2168-05
Misc :
ALS Vial : 34 Sample Multiplier: 1

Instrument :
BNA_M
ClientSampleId :
BF646

Integration Parameters: LSCINT.P
Integrator: RTE
Smoothing : OFF Filtering: 5
Sampling : 1 Min Area: 0.1 % of largest Peak
Start Thrs: 0.2 Max Peaks: 100
Stop Thrs : 0 Peak Location: TOP

If leading or trailing edge < 100 prefer < Baseline drop else tangent >
Peak separation: 5

Method : Z:\SVOASRV\HPCHEM1\BNA_M\METHODS\SOM-EPA-BM032219MA.M
Title : SVOA CALIBRATION

72	21.197	3091	3096	3110	rBV	1956410	2499846	79.77%	6.324%
73	21.333	3115	3119	3122	rBV	243727	269742	8.61%	0.682%
74	21.756	3188	3191	3195	rVB	260601	263185	8.40%	0.666%
75	22.203	3264	3267	3272	rBV	328713	429157	13.69%	1.086%
76	22.697	3347	3351	3357	rVB	374578	522804	16.68%	1.323%
77	23.256	3440	3446	3454	rVB2	1490032	2893572	92.33%	7.320%
78	23.397	3465	3470	3482	rVB2	1104255	2039385	65.08%	5.159%
79	23.874	3546	3551	3563	rVB	288455	540631	17.25%	1.368%

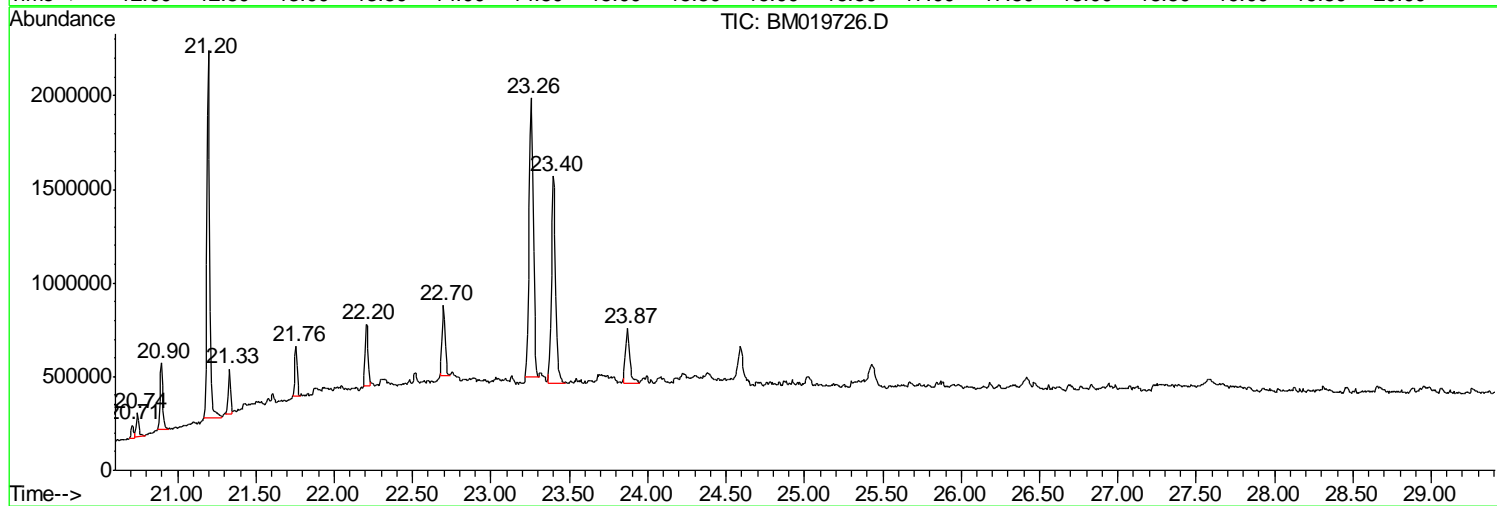
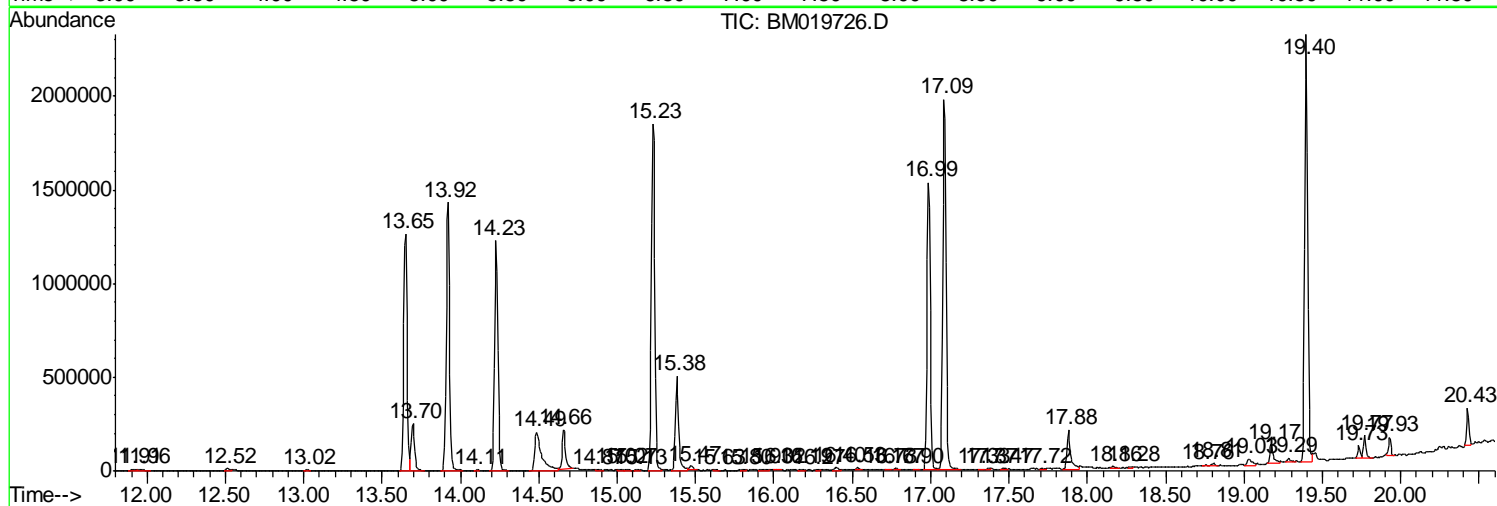
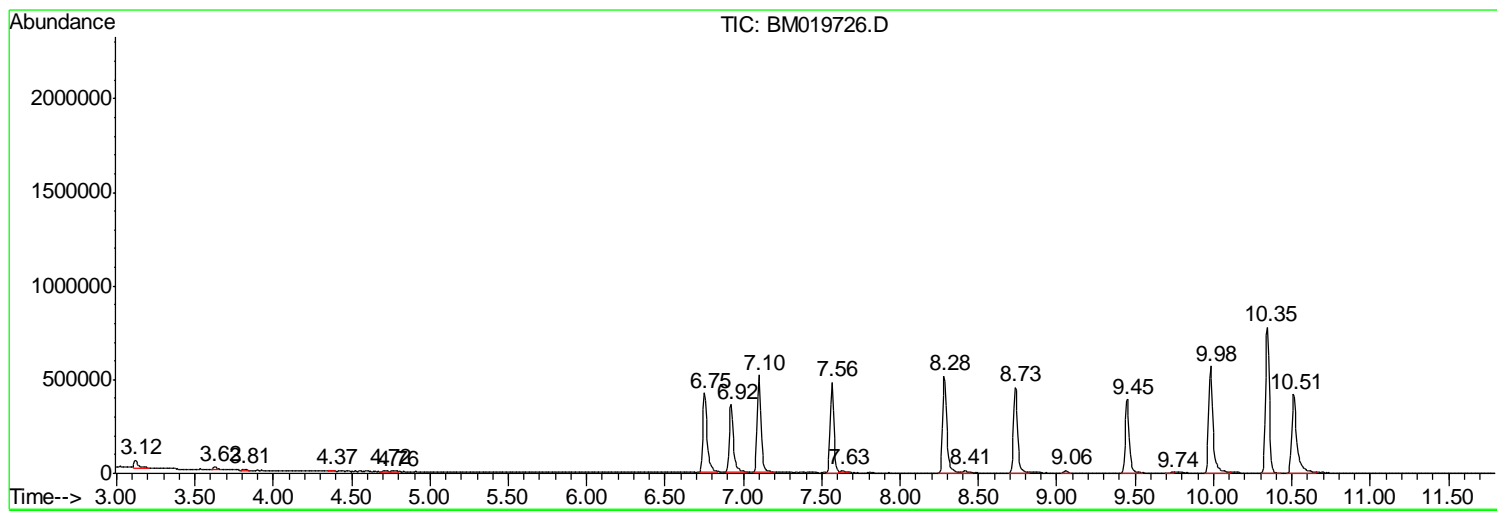
Sum of corrected areas: 39531248

Data Path : Z:\SVOASRV\HPCHEM1\BNA_M\DATA\BM040219\
 Data File : BM019726.D
 Acq On : 03 Apr 2019 12:39
 Operator : JU/SJ
 Sample : K2168-05
 Misc :
 ALS Vial : 34 Sample Multiplier: 1

Instrument :
 BNA_M
 ClientSampleId :
 BF646

Quant Method : Z:\SVOASRV\HPCHEM1\BNA_M\METHODS\SOM-EPA-BM032219MA.M
 Quant Title : SVOA CALIBRATION

TIC Library : C:\DATABASE\NIST02.L
 TIC Integration Parameters: LSCINT.P



Data Path : Z:\SVOASRV\HPCHEM1\BNA_M\DATA\BM040219\
 Data File : BM019726.D
 Acq On : 03 Apr 2019 12:39
 Operator : JU/SJ
 Sample : K2168-05
 Misc :
 ALS Vial : 34 Sample Multiplier: 1

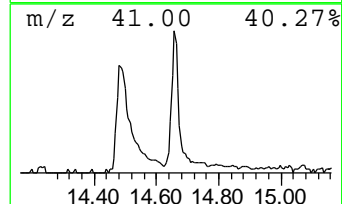
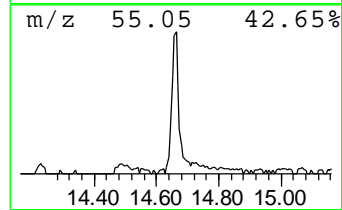
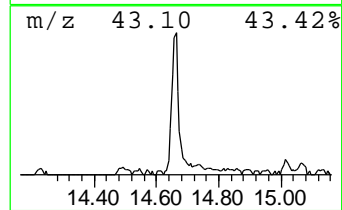
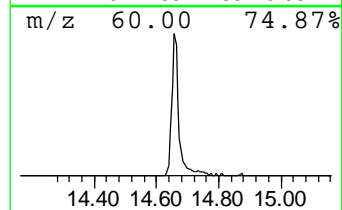
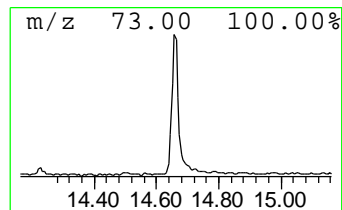
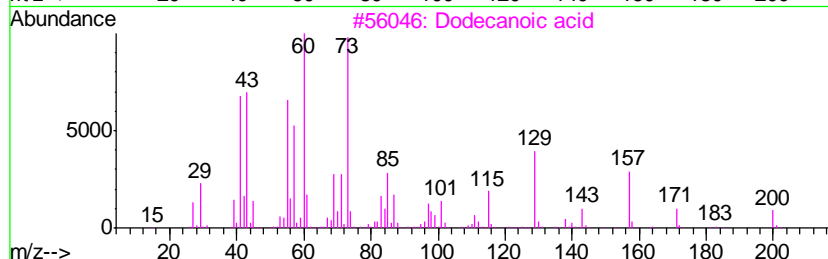
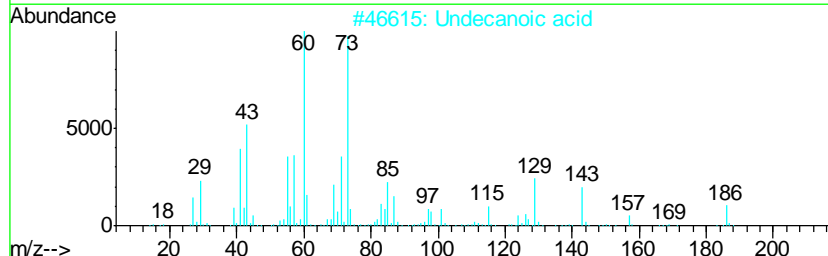
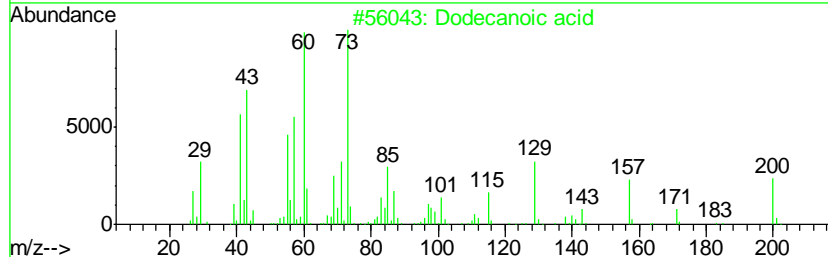
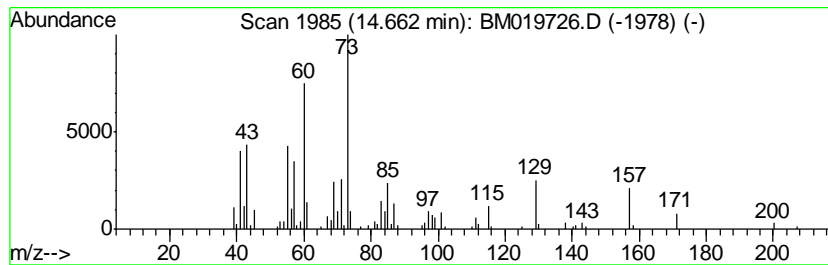
Instrument :
 BNA_M
 ClientSampled :
 BF646

Quant Method : Z:\SVOASRV\HPCHEM1\BNA_M\METHODS\SOM-EPA-BM032219MA.M
 Quant Title : SVOA CALIBRATION

TIC Library : C:\DATABASE\NIST02.L
 TIC Integration Parameters: LSCINT.P

 Peak Number 1 Dodecanoic acid Concentration Rank 4

R.T.	EstConc	Area	Relative to ISTD	R.T.		
14.66	3.45 ng/ul	317255	Acenaphthene-d10	14.23		
Hit# of	5	Tentative ID	MW	MolForm	CAS#	Qual
1		Dodecanoic acid	200	C12H24O2	000143-07-7	90
2		Undecanoic acid	186	C11H22O2	000112-37-8	86
3		Dodecanoic acid	200	C12H24O2	000143-07-7	86
4		Dodecanoic acid	200	C12H24O2	000143-07-7	81
5		n-Decanoic acid	172	C10H20O2	000334-48-5	81



Data Path : Z:\SVOASRV\HPCHEM1\BNA_M\DATA\BM040219\
 Data File : BM019726.D
 Acq On : 03 Apr 2019 12:39
 Operator : JU/SJ
 Sample : K2168-05
 Misc :
 ALS Vial : 34 Sample Multiplier: 1

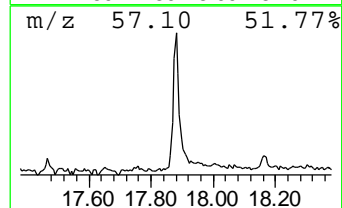
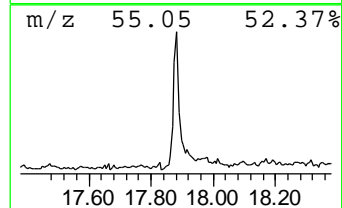
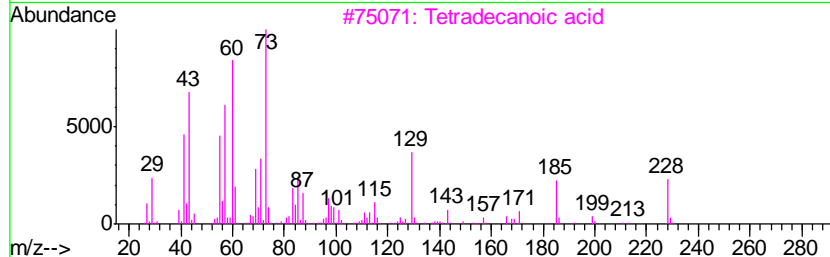
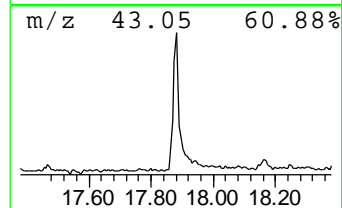
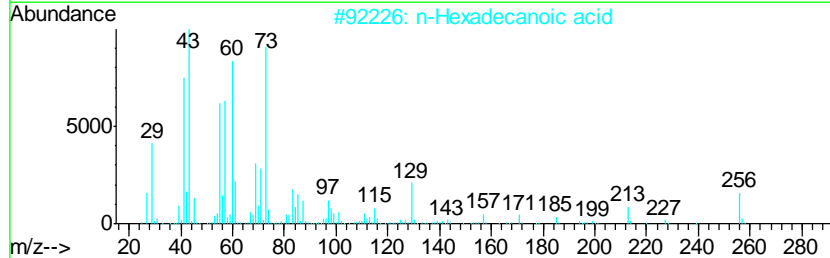
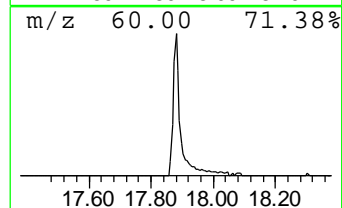
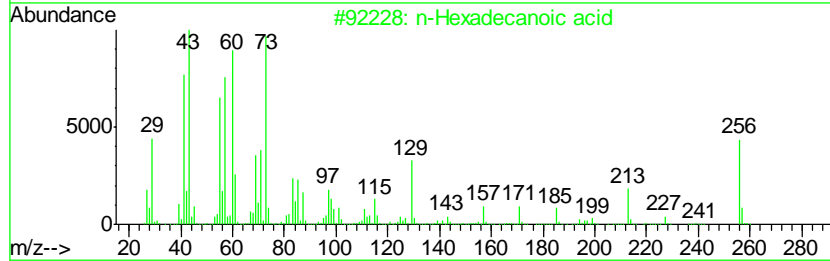
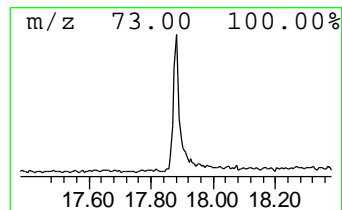
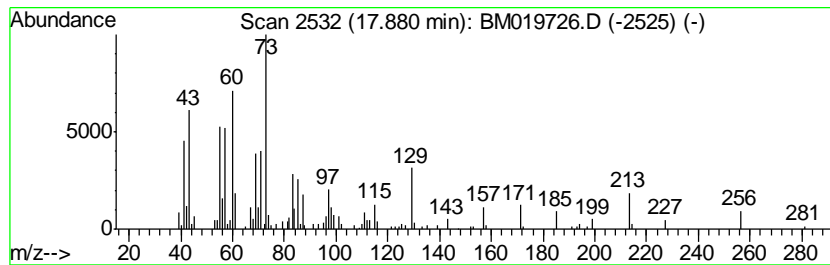
Instrument :
 BNA_M
 ClientSampleID :
 BF646

Quant Method : Z:\SVOASRV\HPCHEM1\BNA_M\METHODS\SOM-EPA-BM032219MA.M
 Quant Title : SVOA CALIBRATION

TIC Library : C:\DATABASE\NIST02.L
 TIC Integration Parameters: LSCINT.P

 Peak Number 2 n-Hexadecanoic acid Concentration Rank 6

R.T.	EstConc	Area	Relative to ISTD	R.T.		
17.88	3.02 ng/ul	327727	Phenanthrene-d10	16.99		
Hit# of	5	Tentative ID	MW	MolForm	CAS#	Qual
1	n-Hexadecanoic acid	256	C16H32O2	000057-10-3	96	
2	n-Hexadecanoic acid	256	C16H32O2	000057-10-3	94	
3	Tetradecanoic acid	228	C14H28O2	000544-63-8	72	
4	Pentadecanoic acid	242	C15H30O2	001002-84-2	64	
5	n-Hexadecanoic acid	256	C16H32O2	000057-10-3	64	



Data Path : Z:\SVOASRV\HPCHEM1\BNA_M\DATA\BM040219\
 Data File : BM019726.D
 Acq On : 03 Apr 2019 12:39
 Operator : JU/SJ
 Sample : K2168-05
 Misc :
 ALS Vial : 34 Sample Multiplier: 1

Instrument :
 BNA_M
 ClientSampleID :
 BF646

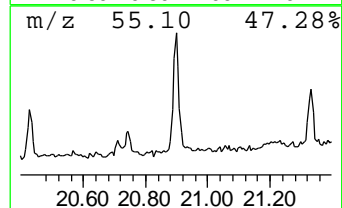
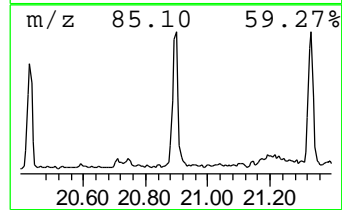
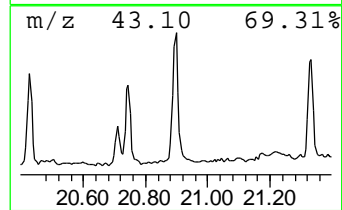
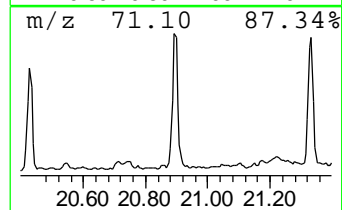
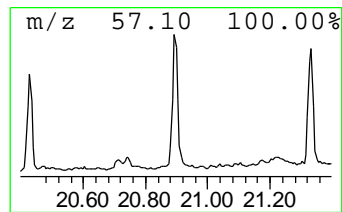
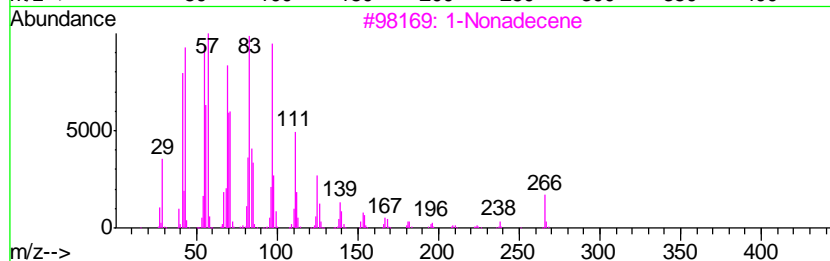
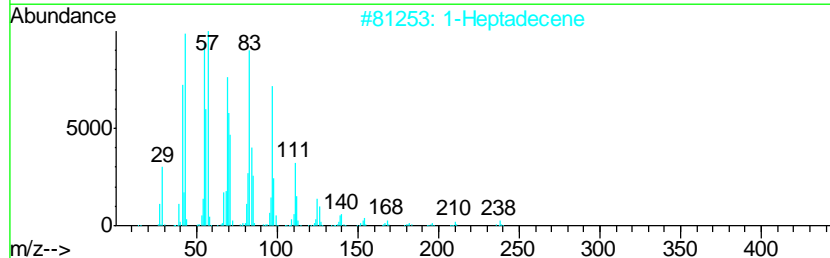
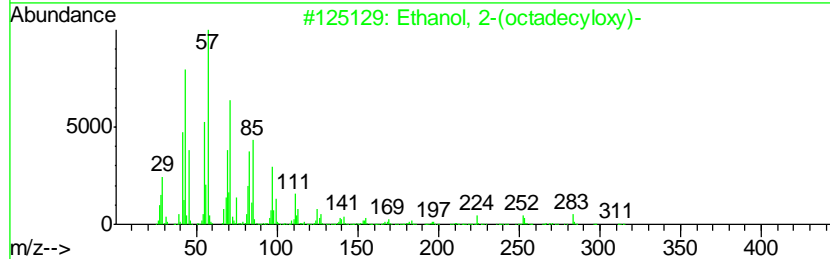
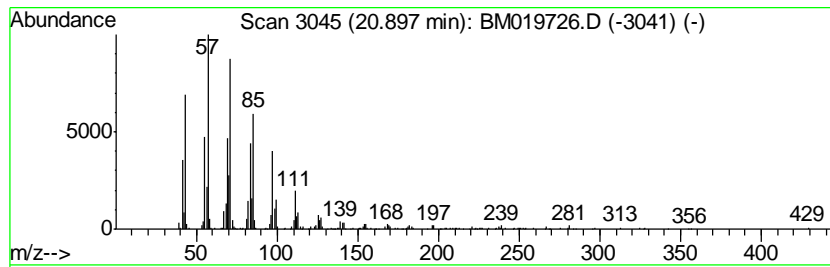
Quant Method : Z:\SVOASRV\HPCHEM1\BNA_M\METHODS\SOM-EPA-BM032219MA.M
 Quant Title : SVOA CALIBRATION

TIC Library : C:\DATABASE\NIST02.L
 TIC Integration Parameters: LSCINT.P

 Peak Number 3 Ethanol, 2-(octadecyloxy)- Concentration Rank 3

R.T.	EstConc	Area	Relative to ISTD	R.T.
20.90	3.58 ng/ul	447478	Chrysene-d12	21.20

Hit#	of	Tentative ID	MW	MolForm	CAS#	Qual
1	5	Ethanol, 2-(octadecyloxy)-	314	C20H42O2	002136-72-3	86
2		1-Heptadecene	238	C17H34	006765-39-5	83
3		1-Nonadecene	266	C19H38	018435-45-5	70
4		1-Hexadecanol, 2-methyl-	256	C17H36O	002490-48-4	62
5		9-Eicosene, (E)-	280	C20H40	074685-29-3	60



Data Path : Z:\SVOASRV\HPCHEM1\BNA_M\DATA\BM040219\
 Data File : BM019726.D
 Acq On : 03 Apr 2019 12:39
 Operator : JU/SJ
 Sample : K2168-05
 Misc :
 ALS Vial : 34 Sample Multiplier: 1

Instrument :
 BNA_M
 ClientSampleID :
 BF646

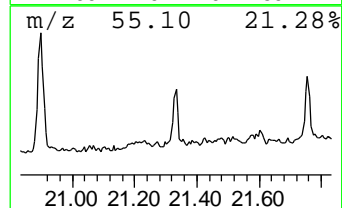
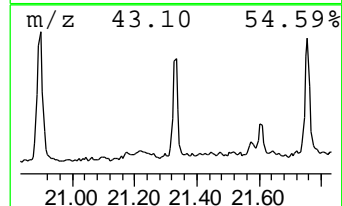
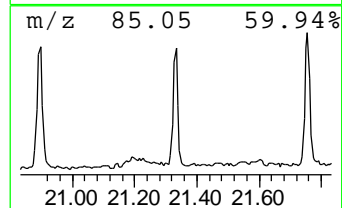
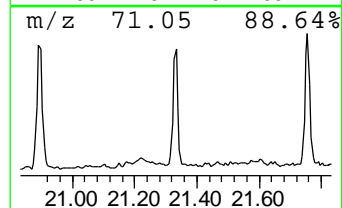
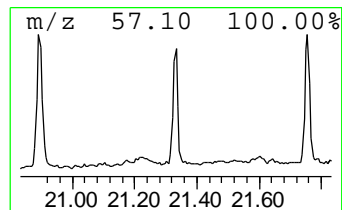
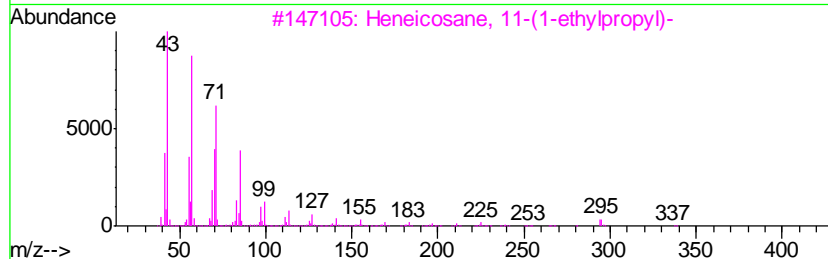
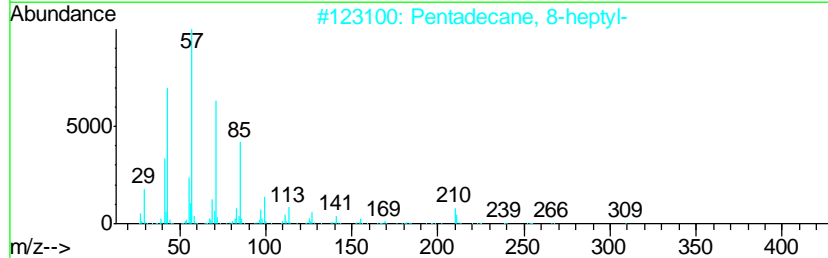
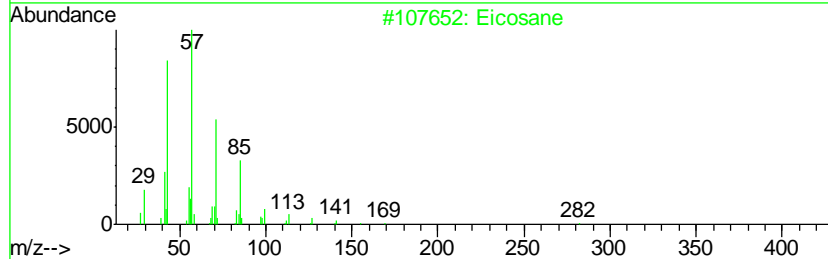
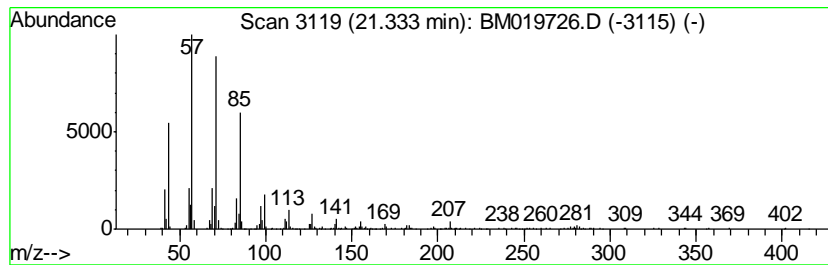
Quant Method : Z:\SVOASRV\HPCHEM1\BNA_M\METHODS\SOM-EPA-BM032219MA.M
 Quant Title : SVOA CALIBRATION

TIC Library : C:\DATABASE\NIST02.L
 TIC Integration Parameters: LSCINT.P

 Peak Number 4 (DEL) Alkane: Straight-Chai... Concentration Rank 7

R.T.	EstConc	Area	Relative to ISTD	R.T.
21.33	2.16 ng/ul	269742	Chrysene-d12	21.20

Hit#	of	Tentative ID	MW	MolForm	CAS#	Qual
1	5	Eicosane	282	C20H42	000112-95-8	91
2		Pentadecane, 8-heptyl-	310	C22H46	071005-15-7	90
3		Heneicosane, 11-(1-ethylpropyl)-	366	C26H54	055282-11-6	90
4		Heneicosane	296	C21H44	000629-94-7	86
5		Heptadecane	240	C17H36	000629-78-7	86



Data Path : Z:\SVOASRV\HPCHEM1\BNA_M\DATA\BM040219\
 Data File : BM019726.D
 Acq On : 03 Apr 2019 12:39
 Operator : JU/SJ
 Sample : K2168-05
 Misc :
 ALS Vial : 34 Sample Multiplier: 1

Instrument :
 BNA_M
 ClientSampled :
 BF646

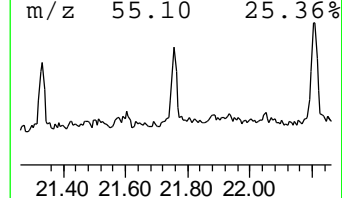
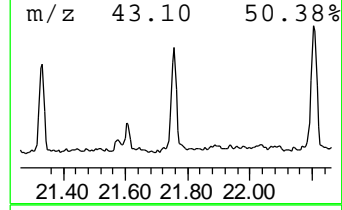
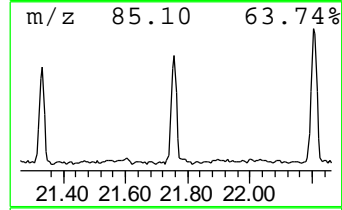
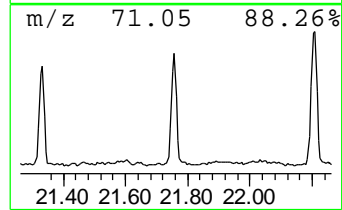
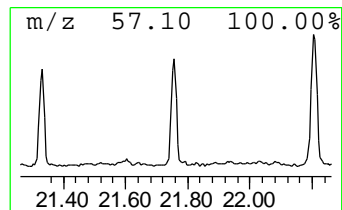
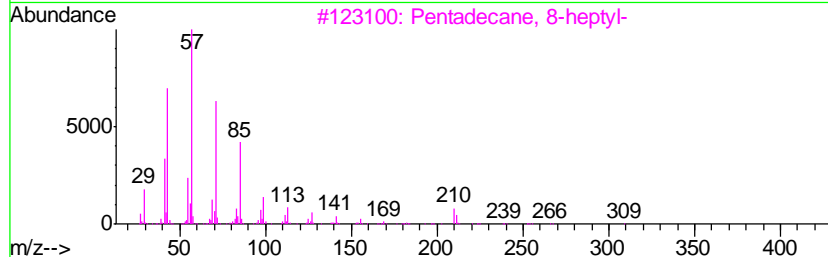
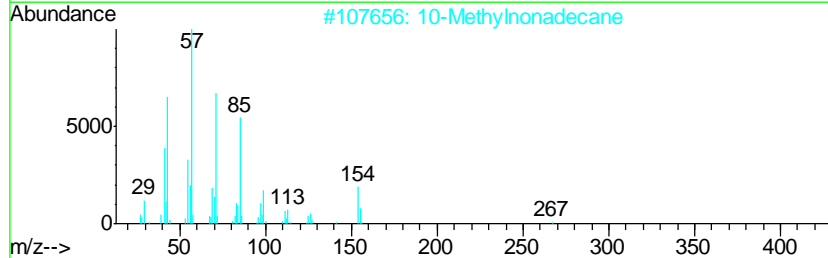
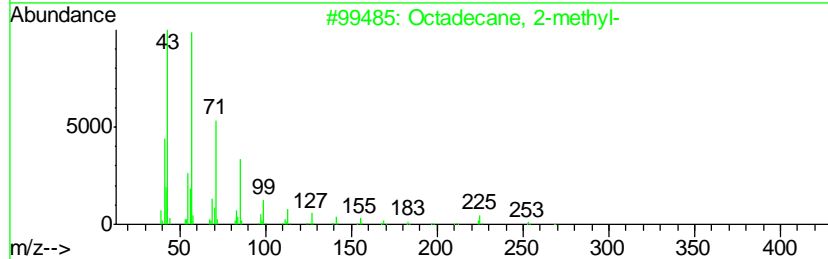
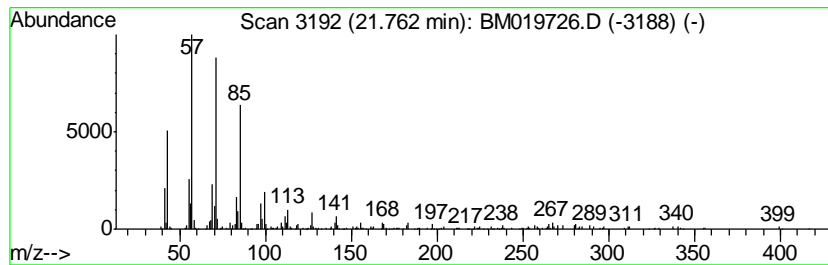
Quant Method : Z:\SVOASRV\HPCHEM1\BNA_M\METHODS\SOM-EPA-BM032219MA.M
 Quant Title : SVOA CALIBRATION

TIC Library : C:\DATABASE\NIST02.L
 TIC Integration Parameters: LSCINT.P

 Peak Number 5 (DEL) Alkane: Straight-Chai... Concentration Rank 8

R.T.	EstConc	Area	Relative to ISTD	R.T.
21.76	2.11 ng/ul	263185	Chrysene-d12	21.20

Hit#	of	Tentative ID	MW	MolForm	CAS#	Qual
1	5	Octadecane, 2-methyl-	268	C19H40	001560-88-9	90
2		10-Methylnonadecane	282	C20H42	056862-62-5	90
3		Pentadecane, 8-heptyl-	310	C22H46	071005-15-7	90
4		Heneicosane, 11-pentyl-	366	C26H54	014739-72-1	90
5		Octadecane, 2-methyl-	268	C19H40	001560-88-9	90



Data Path : Z:\SVOASRV\HPCHEM1\BNA_M\DATA\BM040219\
 Data File : BM019726.D
 Acq On : 03 Apr 2019 12:39
 Operator : JU/SJ
 Sample : K2168-05
 Misc :
 ALS Vial : 34 Sample Multiplier: 1

Instrument :
 BNA_M
 ClientSampled :
 BF646

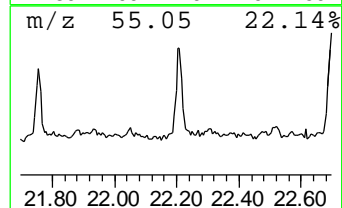
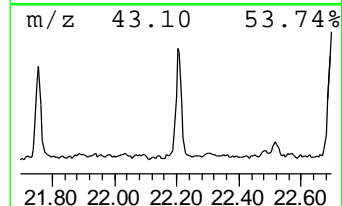
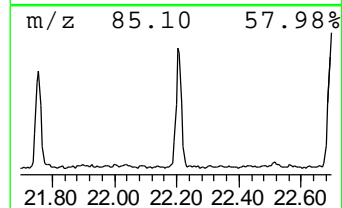
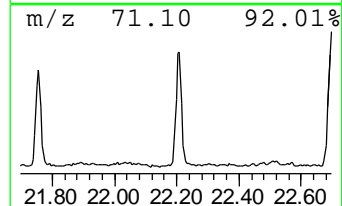
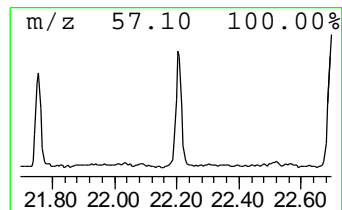
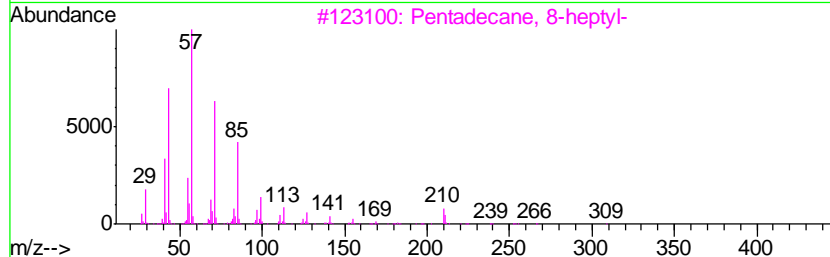
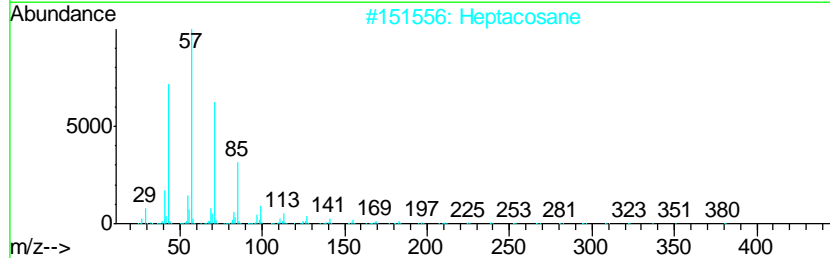
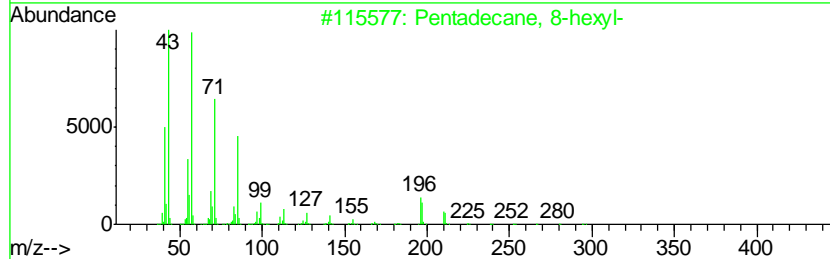
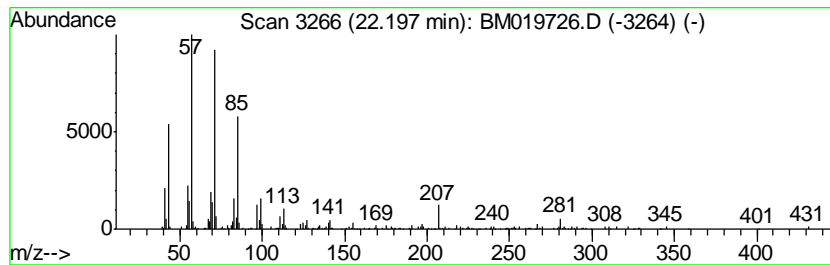
Quant Method : Z:\SVOASRV\HPCHEM1\BNA_M\METHODS\SOM-EPA-BM032219MA.M
 Quant Title : SVOA CALIBRATION

TIC Library : C:\DATABASE\NIST02.L
 TIC Integration Parameters: LSCINT.P

 Peak Number 6 (DEL) Alkane: Straight-Chai... Concentration Rank 5

R.T.	EstConc	Area	Relative to ISTD	R.T.
22.20	3.43 ng/ul	429157	Chrysene-d12	21.20

Hit#	of	Tentative ID	MW	MolForm	CAS#	Qual
1	5	Pentadecane, 8-hexyl-	296	C21H44	013475-75-7	91
2		Heptacosane	380	C27H56	000593-49-7	91
3		Pentadecane, 8-heptyl-	310	C22H46	071005-15-7	91
4		Octacosane	394	C28H58	000630-02-4	91
5		Pentacosane	352	C25H52	000629-99-2	90



Data Path : Z:\SVOASRV\HPCHEM1\BNA_M\DATA\BM040219\
 Data File : BM019726.D
 Acq On : 03 Apr 2019 12:39
 Operator : JU/SJ
 Sample : K2168-05
 Misc :
 ALS Vial : 34 Sample Multiplier: 1

Instrument :
 BNA_M
 ClientSampled :
 BF646

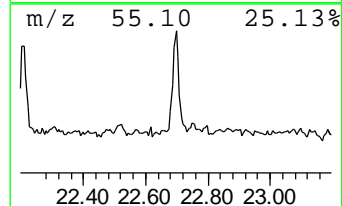
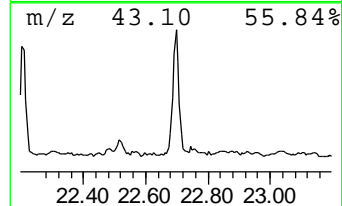
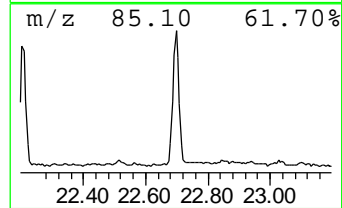
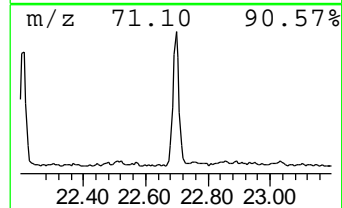
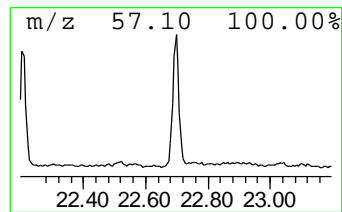
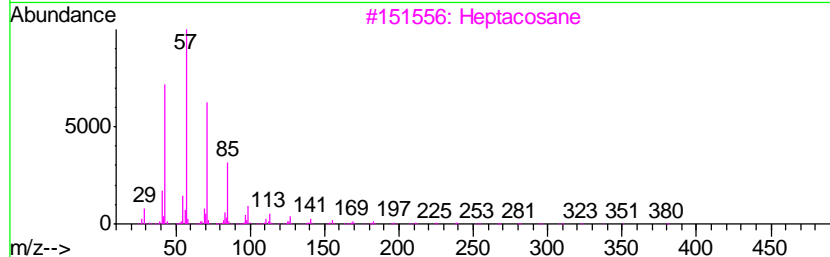
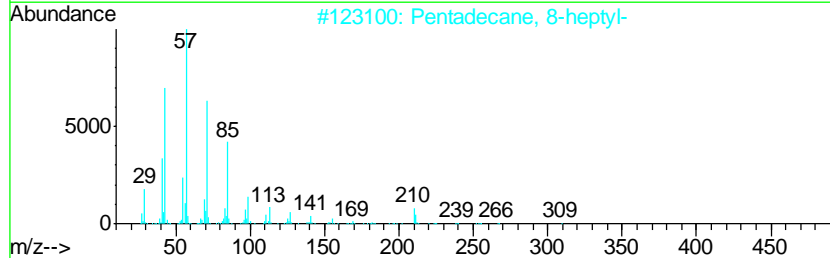
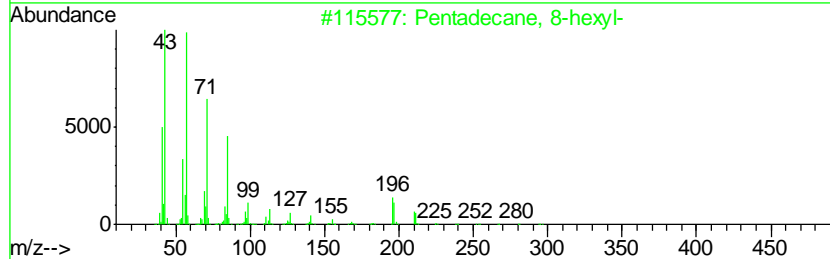
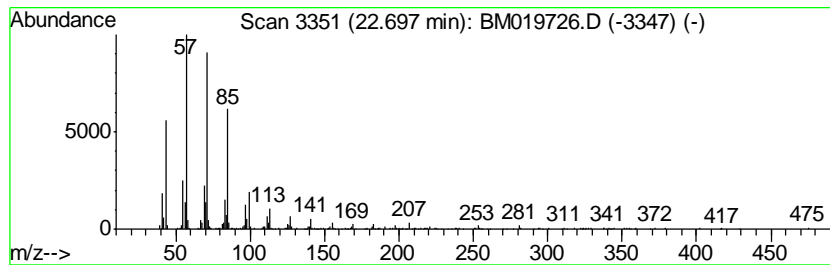
Quant Method : Z:\SVOASRV\HPCHEM1\BNA_M\METHODS\SOM-EPA-BM032219MA.M
 Quant Title : SVOA CALIBRATION

TIC Library : C:\DATABASE\NIST02.L
 TIC Integration Parameters: LSCINT.P

 Peak Number 7 (DEL) Alkane: Straight-Chai... Concentration Rank 2

R.T.	EstConc	Area	Relative to ISTD	R.T.
22.70	5.13 ng/ul	522804	Perylene-d12	23.40

Hit#	of	Tentative ID	MW	MolForm	CAS#	Qual
1	5	Pentadecane, 8-hexyl-	296	C21H44	013475-75-7	90
2		Pentadecane, 8-heptyl-	310	C22H46	071005-15-7	90
3		Heptacosane	380	C27H56	000593-49-7	87
4		Octacosane	394	C28H58	000630-02-4	87
5		Eicosane, 10-methyl-	296	C21H44	054833-23-7	87



Data Path : Z:\SVOASRV\HPCHEM1\BNA_M\DATA\BM040219\
 Data File : BM019726.D
 Acq On : 03 Apr 2019 12:39
 Operator : JU/SJ
 Sample : K2168-05
 Misc :
 ALS Vial : 34 Sample Multiplier: 1

Instrument :
 BNA_M
 ClientSampled :
 BF646

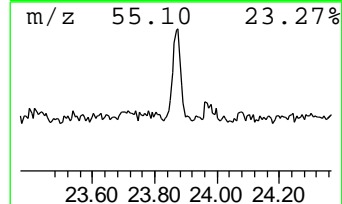
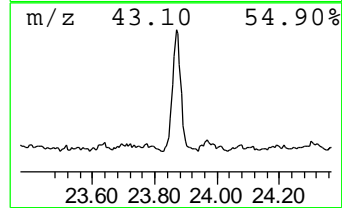
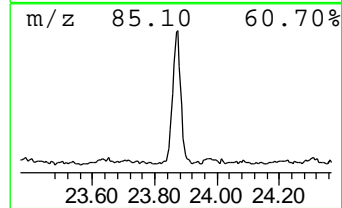
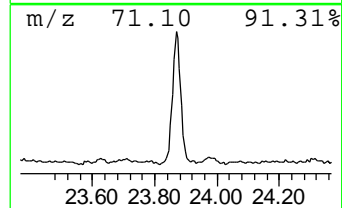
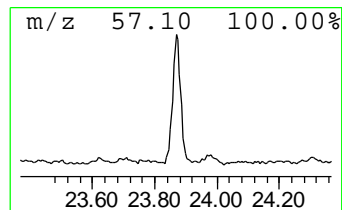
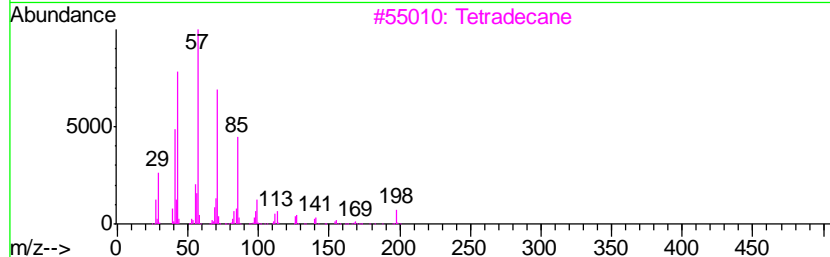
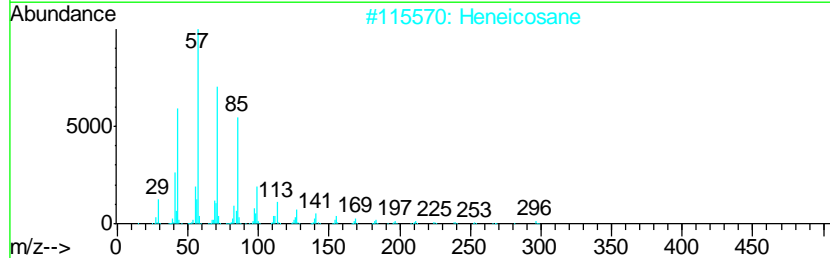
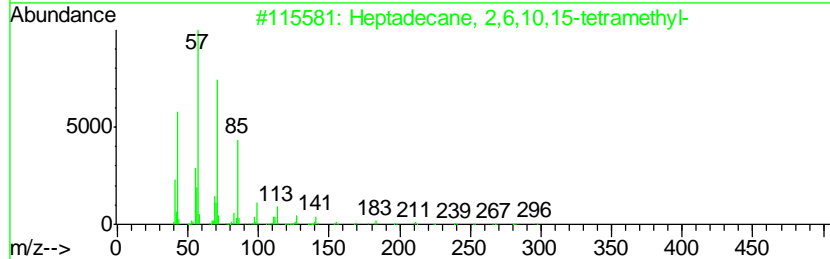
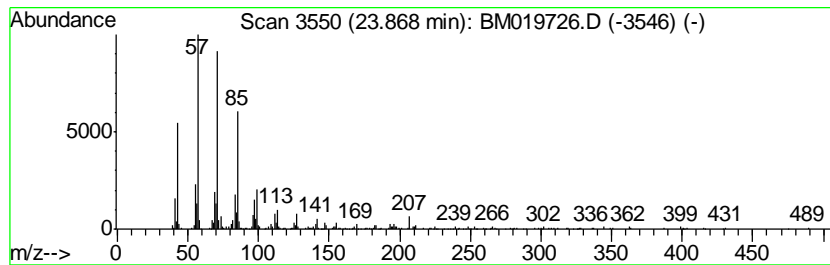
Quant Method : Z:\SVOASRV\HPCHEM1\BNA_M\METHODS\SOM-EPA-BM032219MA.M
 Quant Title : SVOA CALIBRATION

TIC Library : C:\DATABASE\NIST02.L
 TIC Integration Parameters: LSCINT.P

 Peak Number 8 (DEL) Alkane: Straight-Chai... Concentration Rank 1

R.T.	EstConc	Area	Relative to ISTD	R.T.
23.87	5.30 ng/ul	540631	Perylene-d12	23.40

Hit#	of	Tentative ID	MW	MolForm	CAS#	Qual
1	5	Heptadecane, 2,6,10,15-tetramethyl-	296	C21H44	054833-48-6	87
2		Heneicosane	296	C21H44	000629-94-7	87
3		Tetradecane	198	C14H30	000629-59-4	87
4		Nonadecane	268	C19H40	000629-92-5	86
5		Docosane	310	C22H46	000629-97-0	86



Data Path : Z:\SVOASRV\HPCHEM1\BNA_M\DATA\BM040219\
 Data File : BM019726.D
 Acq On : 03 Apr 2019 12:39
 Operator : JU/SJ
 Sample : K2168-05
 Misc :
 ALS Vial : 34 Sample Multiplier: 1

Instrument :
 BNA_M
 ClientSampleId :
 BF646

Quant Method : Z:\SVOASRV\HPCHEM1\BNA_M\METHODS\SOM-EPA-BM032219MA.M
 Quant Title : SVOA CALIBRATION

TIC Library : C:\DATABASE\NIST02.L
 TIC Integration Parameters: LSCINT.P

TIC Top Hit name	RT	EstConc	Units	Response	--Internal Standard--			
					#	RT	Resp	Conc
Dodecanoic acid	14.66	3.5	ng/ul	317255	3	14.23	1840830	20.0
n-Hexadecanoic acid	17.88	3.0	ng/ul	327727	4	16.99	2168690	20.0
Ethanol, 2-(octad...	20.90	3.6	ng/ul	447478	5	21.20	2499850	20.0
(DEL) Alkane: Str...	21.33	2.2	ng/ul	269742	5	21.20	2499850	20.0
(DEL) Alkane: Str...	21.76	2.1	ng/ul	263185	5	21.20	2499850	20.0
(DEL) Alkane: Str...	22.20	3.4	ng/ul	429157	5	21.20	2499850	20.0
(DEL) Alkane: Str...	22.70	5.1	ng/ul	522804	6	23.40	2039390	20.0
(DEL) Alkane: Str...	23.87	5.3	ng/ul	540631	6	23.40	2039390	20.0