

Data Path : Z:\SVOASRV\HPCHEM1\BNA_M\DATA\BM040219\
 Data File : BM019728.D
 Acq On : 03 Apr 2019 13:52
 Operator : JU/SJ
 Sample : K2168-17
 Misc :
 ALS Vial : 36 Sample Multiplier: 1

Instrument :
 BNA_M
 ClientSampleId :
 BF659

Integration Parameters: LSCINT.P

Integrator: RTE
 Smoothing : OFF
 Sampling : 1
 Start Thrs: 0.2
 Stop Thrs : 0

Filtering: 5
 Min Area: 0.1 % of largest Peak
 Max Peaks: 100
 Peak Location: TOP

If leading or trailing edge < 100 prefer < Baseline drop else tangent >
 Peak separation: 5

Method : Z:\SVOASRV\HPCHEM1\BNA_M\METHODS\SOM-EPA-BM032219MA.M
 Title : SVOA CALIBRATION

Signal : TIC

peak #	R.T. min	first scan	max scan	last scan	PK TY	peak height	corr. area	corr. % max.	% of total
1	3.117	19	22	36	rVB	48138	88190	3.04%	0.176%
2	3.622	105	108	116	rVB	39374	55863	1.93%	0.112%
3	6.752	634	640	653	rBV	440488	816001	28.17%	1.630%
4	6.922	663	669	682	rBV	363012	660659	22.81%	1.320%
5	7.099	693	699	716	rVB	517725	868365	29.98%	1.735%
6	7.563	772	778	787	rBV	644092	1033798	35.69%	2.065%
7	8.281	894	900	918	rBV	541838	1031702	35.62%	2.061%
8	8.646	956	962	967	rVV3	20346	41525	1.43%	0.083%
9	8.734	970	977	990	rVV	476456	860489	29.71%	1.719%
10	9.446	1090	1098	1111	rBV	413107	760284	26.25%	1.519%
11	9.734	1140	1147	1155	rBV3	46328	91827	3.17%	0.183%
12	9.981	1183	1189	1204	rBV	572496	1133782	39.14%	2.265%
13	10.346	1242	1251	1257	rBV	1001250	1654942	57.13%	3.306%
14	10.469	1269	1272	1274	rVV	33260	43231	1.49%	0.086%
15	10.510	1274	1279	1292	rVB	409805	832454	28.74%	1.663%
16	10.793	1322	1327	1334	rVB6	24894	47667	1.65%	0.095%
17	11.246	1397	1404	1411	rVB4	30643	69184	2.39%	0.138%
18	11.328	1411	1418	1422	rBV	54486	89689	3.10%	0.179%
19	11.969	1520	1527	1531	rVB7	34260	69525	2.40%	0.139%
20	12.022	1531	1536	1545	rVB	160229	269592	9.31%	0.539%
21	12.240	1563	1573	1582	rBV2	175864	369712	12.76%	0.739%
22	12.393	1594	1599	1603	rBV6	28886	45531	1.57%	0.091%
23	12.457	1603	1610	1614	rBV8	20205	45730	1.58%	0.091%
24	12.716	1649	1654	1659	rBV	71853	103985	3.59%	0.208%
25	12.992	1697	1701	1704	rBV3	27708	40650	1.40%	0.081%
26	13.140	1722	1726	1730	rVB2	31041	51432	1.78%	0.103%
27	13.245	1739	1744	1757	rVB2	91308	240343	8.30%	0.480%
28	13.381	1760	1767	1776	rBV3	200233	546963	18.88%	1.093%
29	13.539	1787	1794	1799	rBV	341028	649668	22.43%	1.298%
30	13.592	1799	1803	1807	rVV	146813	231976	8.01%	0.463%
31	13.645	1807	1812	1817	rVV	1298755	1829088	63.14%	3.654%
32	13.692	1817	1820	1825	rVB	288237	411283	14.20%	0.822%
33	13.781	1830	1835	1838	rBV	132267	199200	6.88%	0.398%
34	13.916	1852	1858	1869	rBV	1370186	2209159	76.26%	4.413%

Data Path : Z:\SVOASRV\HPCHEM1\BNA_M\DATA\BM040219\
 Data File : BM019728.D
 Acq On : 03 Apr 2019 13:52
 Operator : JU/SJ
 Sample : K2168-17
 Misc :
 ALS Vial : 36 Sample Multiplier: 1

Instrument :
 BNA_M
 ClientSampleId :
 BF659

Integration Parameters: LSCINT.P

Integrator: RTE
 Smoothing : OFF
 Sampling : 1
 Start Thrs: 0.2
 Stop Thrs : 0

Filtering: 5
 Min Area: 0.1 % of largest Peak
 Max Peaks: 100
 Peak Location: TOP

If leading or trailing edge < 100 prefer < Baseline drop else tangent >
 Peak separation: 5

Method : Z:\SVOASRV\HPCHEM1\BNA_M\METHODS\SOM-EPA-BM032219MA.M
 Title : SVOA CALIBRATION

35	14.028	1873	1877	1885	rVB9	22795	46565	1.61%	0.093%
36	14.169	1895	1901	1904	rBV6	32416	58388	2.02%	0.117%
37	14.228	1904	1911	1917	rBV2	1483099	2272707	78.46%	4.540%
38	14.439	1941	1947	1951	rBV2	141824	337942	11.67%	0.675%
39	14.486	1951	1955	1967	rVV2	172860	504985	17.43%	1.009%
40	14.628	1971	1979	1982	rBV2	188165	331371	11.44%	0.662%
41	14.704	1987	1992	2000	rVV	169266	324209	11.19%	0.648%
42	14.763	2000	2002	2009	rVB4	46986	68637	2.37%	0.137%
43	14.845	2011	2016	2021	rBV	160197	291575	10.07%	0.582%
44	14.898	2021	2025	2031	rVB	164115	231074	7.98%	0.462%
45	15.022	2038	2046	2048	rBV	96114	209291	7.22%	0.418%
46	15.051	2048	2051	2057	rVB2	76384	118888	4.10%	0.238%
47	15.186	2068	2074	2076	rBV4	48259	84519	2.92%	0.169%
48	15.228	2076	2081	2087	rVV	1843315	2600920	89.79%	5.196%
49	15.328	2093	2098	2102	rBV2	68066	113379	3.91%	0.226%
50	15.381	2102	2107	2115	rVV2	414752	714626	24.67%	1.428%
51	15.469	2116	2122	2132	rVB4	96038	305212	10.54%	0.610%
52	15.686	2157	2159	2163	rVB5	44524	54627	1.89%	0.109%
53	15.728	2163	2166	2169	rBV2	45044	57325	1.98%	0.115%
54	15.798	2174	2178	2187	rVB4	69003	143153	4.94%	0.286%
55	15.951	2196	2204	2210	rVB3	188791	326711	11.28%	0.653%
56	16.092	2224	2228	2232	rBV	75887	106239	3.67%	0.212%
57	16.275	2255	2259	2266	rBV6	71502	169263	5.84%	0.338%
58	16.339	2266	2270	2275	rVV3	114486	175506	6.06%	0.351%
59	16.492	2292	2296	2300	rBV4	54520	102408	3.54%	0.205%
60	16.545	2301	2305	2317	rVB9	85406	254343	8.78%	0.508%
61	16.639	2317	2321	2326	rBV2	47143	75581	2.61%	0.151%
62	16.775	2340	2344	2347	rBV	100742	151670	5.24%	0.303%
63	16.810	2348	2350	2357	rVB4	105266	154761	5.34%	0.309%
64	16.986	2374	2380	2385	rBV	1838286	2581335	89.11%	5.157%
65	17.028	2385	2387	2392	rVV	161772	222096	7.67%	0.444%
66	17.086	2392	2397	2404	rVB	2047806	2714868	93.72%	5.423%
67	17.186	2411	2414	2418	rVB2	68302	98453	3.40%	0.197%
68	17.257	2423	2426	2428	rBV3	35700	51885	1.79%	0.104%
69	17.386	2444	2448	2453	rBV3	96067	166462	5.75%	0.333%
70	17.469	2459	2462	2465	rVB2	56240	68528	2.37%	0.137%
71	17.569	2476	2479	2489	rVB	140271	233920	8.08%	0.467%

Data Path : Z:\SVOASRV\HPCHEM1\BNA_M\DATA\BM040219\
 Data File : BM019728.D
 Acq On : 03 Apr 2019 13:52
 Operator : JU/SJ
 Sample : K2168-17
 Misc :
 ALS Vial : 36 Sample Multiplier: 1

Instrument :
 BNA_M
 ClientSampleId :
 BF659

Integration Parameters: LSCINT.P

Integrator: RTE
 Smoothing : OFF
 Sampling : 1
 Start Thrs: 0.2
 Stop Thrs : 0

Filtering: 5
 Min Area: 0.1 % of largest Peak
 Max Peaks: 100
 Peak Location: TOP

If leading or trailing edge < 100 prefer < Baseline drop else tangent >
 Peak separation: 5

Method : Z:\SVOASRV\HPCHEM1\BNA_M\METHODS\SOM-EPA-BM032219MA.M
 Title : SVOA CALIBRATION

72	17.716	2499	2504	2508	rBV	97884	202294	6.98%	0.404%
73	17.880	2525	2532	2534	rBV2	283494	627134	21.65%	1.253%
74	17.910	2534	2537	2543	rVB	265645	412467	14.24%	0.824%
75	18.045	2557	2560	2565	rVV3	127958	187048	6.46%	0.374%
76	18.098	2566	2569	2575	rVB2	117255	191880	6.62%	0.383%
77	18.163	2577	2580	2584	rBV2	44964	64850	2.24%	0.130%
78	18.357	2611	2613	2617	rBV2	67998	105352	3.64%	0.210%
79	18.545	2641	2645	2649	rBV3	54200	108257	3.74%	0.216%
80	18.616	2654	2657	2662	rVV2	162951	262604	9.07%	0.525%
81	18.669	2662	2666	2669	rVV	225189	307927	10.63%	0.615%
82	18.710	2670	2673	2677	rVB	137388	174250	6.02%	0.348%
83	18.792	2682	2687	2692	rBV2	391988	686314	23.69%	1.371%
84	18.927	2707	2710	2714	rBV	110838	190926	6.59%	0.381%
85	18.980	2716	2719	2724	rVB	126825	176416	6.09%	0.352%
86	19.169	2748	2751	2756	rBV5	91174	171496	5.92%	0.343%
87	19.398	2785	2790	2794	rBV	2123842	2896767	100.00%	5.787%
88	19.439	2794	2797	2803	rVV2	232536	381854	13.18%	0.763%
89	19.498	2803	2807	2813	rVB	238063	375312	12.96%	0.750%
90	19.621	2825	2828	2831	rVB2	99243	115957	4.00%	0.232%
91	19.733	2844	2847	2850	rBV2	114713	133413	4.61%	0.267%
92	19.769	2851	2853	2860	rVB3	187209	235083	8.12%	0.470%
93	19.927	2878	2880	2887	rVB4	188527	223601	7.72%	0.447%
94	20.427	2962	2965	2971	rVB	235834	284434	9.82%	0.568%
95	20.898	3041	3045	3049	rBV2	307645	387677	13.38%	0.774%
96	21.198	3091	3096	3106	rBV	1918566	2430403	83.90%	4.855%
97	21.757	3188	3191	3194	rVB2	202970	220279	7.60%	0.440%
98	22.698	3348	3351	3356	rVB	247014	330486	11.41%	0.660%
99	23.256	3441	3446	3454	rVB2	1144605	2204303	76.10%	4.404%
100	23.398	3465	3470	3479	rVB	1077680	1951832	67.38%	3.899%

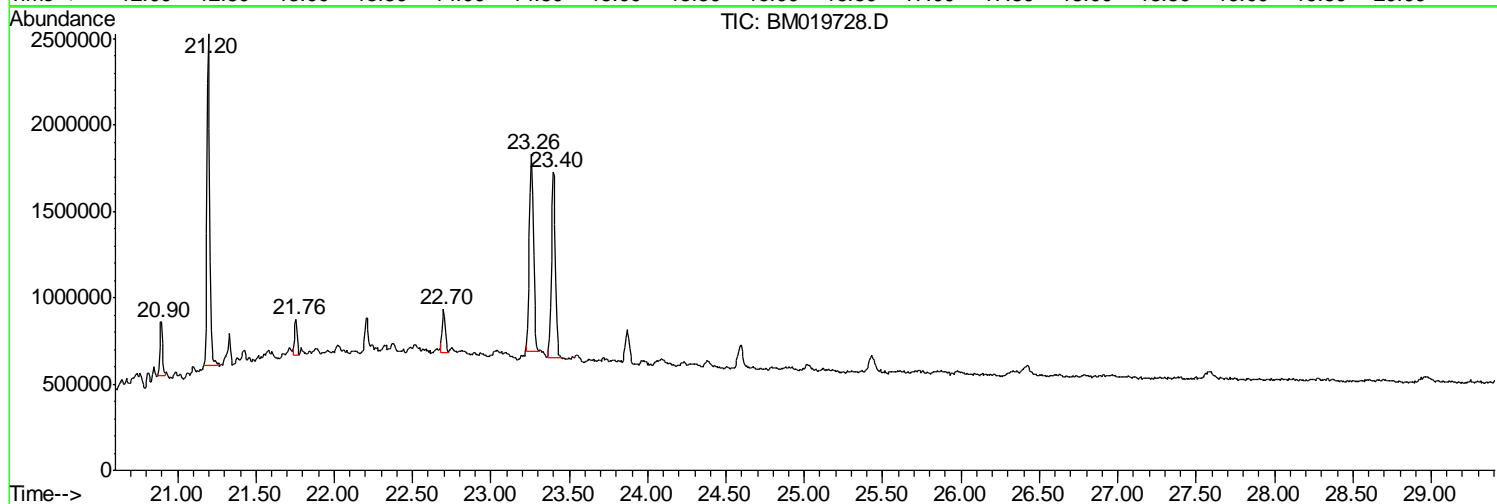
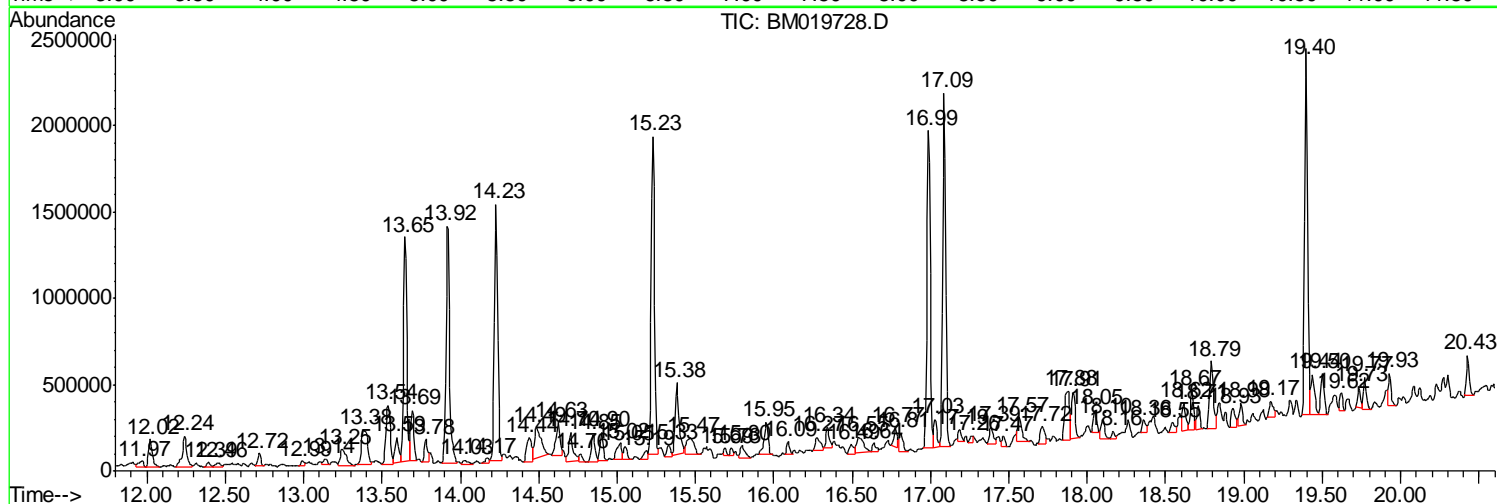
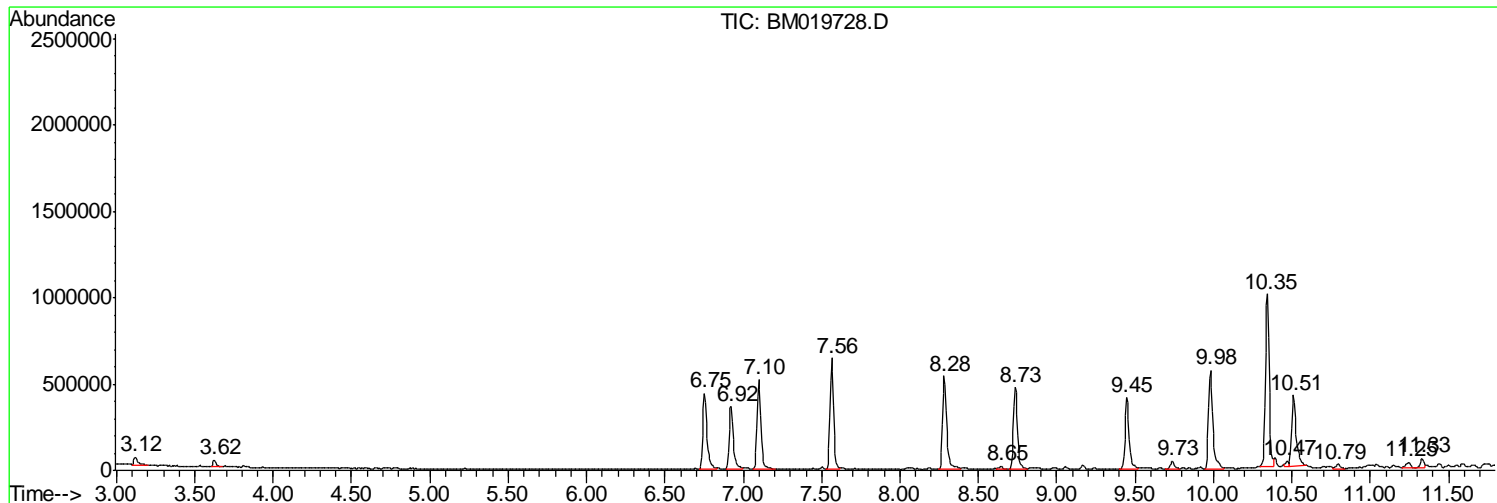
Sum of corrected areas: 50057527

Data Path : Z:\SVOASRV\HPCHEM1\BNA_M\DATA\BM040219\
 Data File : BM019728.D
 Acq On : 03 Apr 2019 13:52
 Operator : JU/SJ
 Sample : K2168-17
 Misc :
 ALS Vial : 36 Sample Multiplier: 1

Instrument :
 BNA_M
 Client Sampled :
 BF659

Quant Method : Z:\SVOASRV\HPCHEM1\BNA_M\METHODS\SOM-EPA-BM032219MA.M
 Quant Title : SVOA CALIBRATION

TIC Library : C:\DATABASE\NIST02.L
 TIC Integration Parameters: LSCINT.P



Data Path : Z:\SVOASRV\HPCHEM1\BNA_M\DATA\BM040219\
 Data File : BM019728.D
 Acq On : 03 Apr 2019 13:52
 Operator : JU/SJ
 Sample : K2168-17
 Misc :
 ALS Vial : 36 Sample Multiplier: 1

Instrument :
 BNA_M
 ClientSampled :
 BF659

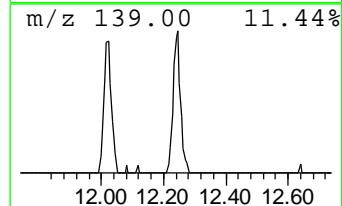
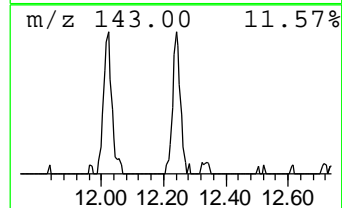
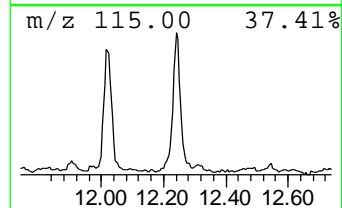
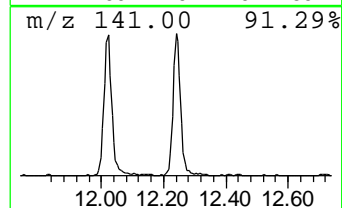
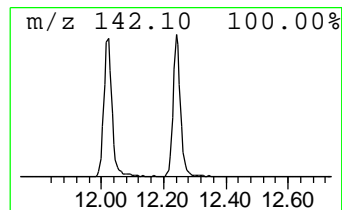
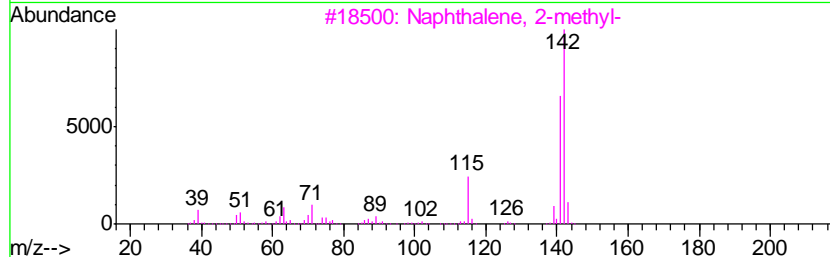
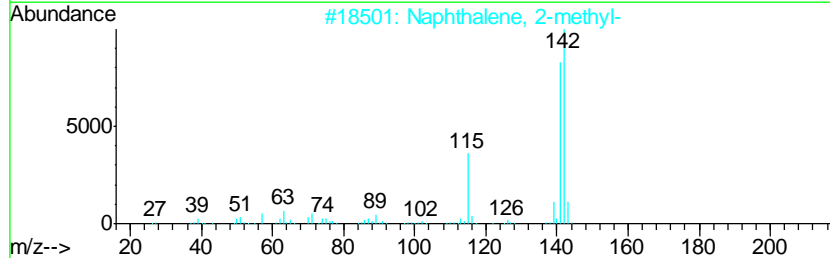
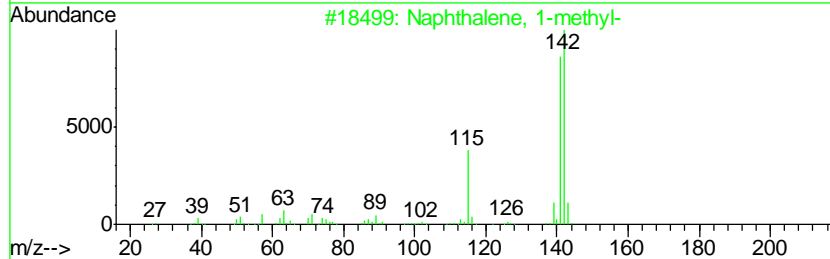
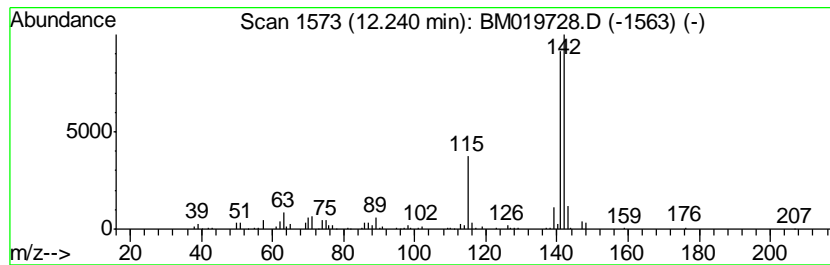
Quant Method : Z:\SVOASRV\HPCHEM1\BNA_M\METHODS\SOM-EPA-BM032219MA.M
 Quant Title : SVOA CALIBRATION

TIC Library : C:\DATABASE\NIST02.L
 TIC Integration Parameters: LSCINT.P

 Peak Number 1 Naphthalene, 1-methyl- Concentration Rank 5

R.T.	EstConc	Area	Relative to ISTD	R.T.
12.24	4.47 ng/ul	369712	Naphthalene-d8	10.35

Hit#	of	Tentative ID	MW	MolForm	CAS#	Qual
1	5	Naphthalene, 1-methyl-	142	C11H10	000090-12-0	96
2		Naphthalene, 2-methyl-	142	C11H10	000091-57-6	96
3		Naphthalene, 2-methyl-	142	C11H10	000091-57-6	94
4		1,4-Methanonaphthalene, 1,4-dihy...	142	C11H10	004453-90-1	94
5		Naphthalene, 1-methyl-	142	C11H10	000090-12-0	94



Data Path : Z:\SVOASRV\HPCHEM1\BNA_M\DATA\BM040219\
 Data File : BM019728.D
 Acq On : 03 Apr 2019 13:52
 Operator : JU/SJ
 Sample : K2168-17
 Misc :
 ALS Vial : 36 Sample Multiplier: 1

Instrument :
 BNA_M
 ClientSampled :
 BF659

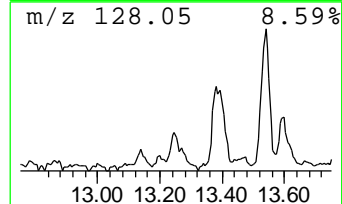
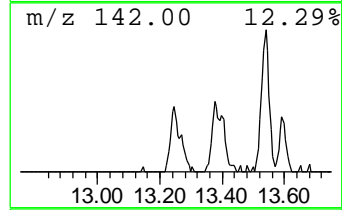
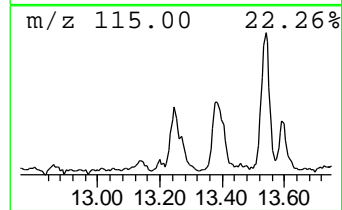
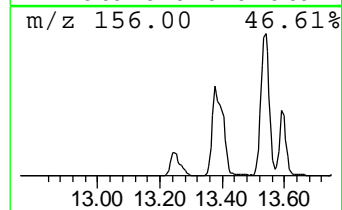
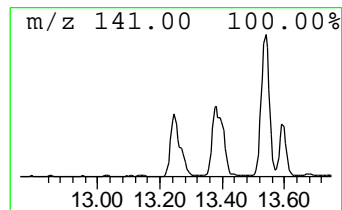
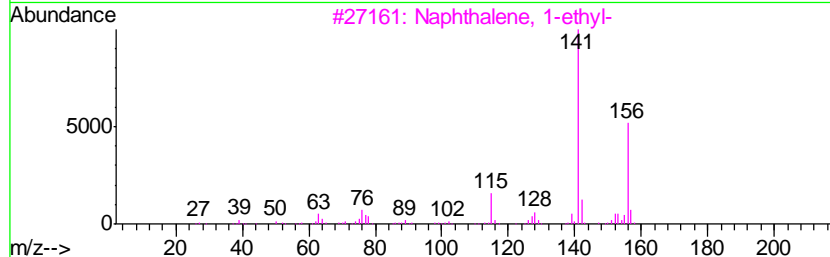
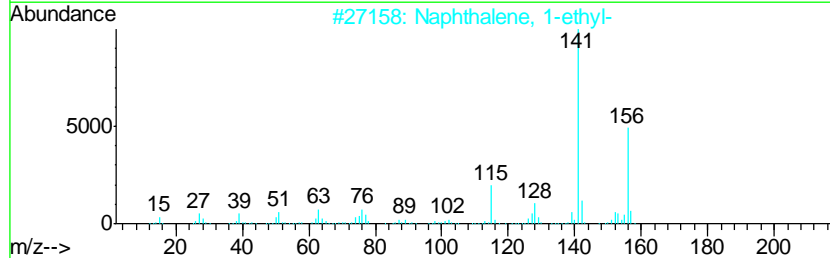
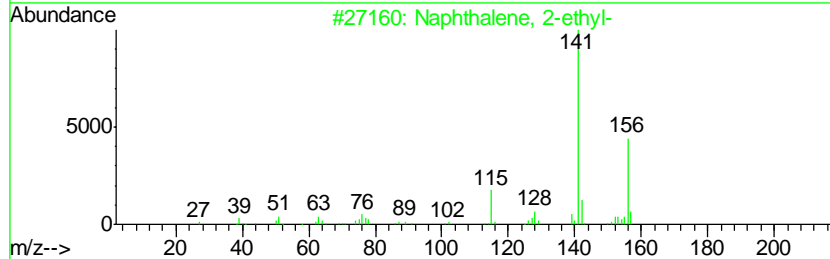
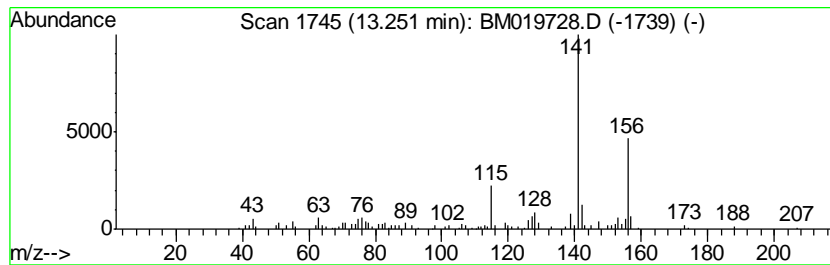
Quant Method : Z:\SVOASRV\HPCHEM1\BNA_M\METHODS\SOM-EPA-BM032219MA.M
 Quant Title : SVOA CALIBRATION

TIC Library : C:\DATABASE\NIST02.L
 TIC Integration Parameters: LSCINT.P

 Peak Number 2 Naphthalene, 2-ethyl- Concentration Rank 17

R.T.	EstConc	Area	Relative to ISTD	R.T.
13.25	2.12 ng/ul	240343	Acenaphthene-d10	14.23

Hit#	of	Tentative ID	MW	MolForm	CAS#	Qual
1	5	Naphthalene, 2-ethyl-	156	C12H12	000939-27-5	97
2		Naphthalene, 1-ethyl-	156	C12H12	001127-76-0	96
3		Naphthalene, 1-ethyl-	156	C12H12	001127-76-0	94
4		Naphthalene, 1-ethyl-	156	C12H12	001127-76-0	94
5		Naphthalene, 2-ethyl-	156	C12H12	000939-27-5	94



Data Path : Z:\SVOASRV\HPCHEM1\BNA_M\DATA\BM040219\
 Data File : BM019728.D
 Acq On : 03 Apr 2019 13:52
 Operator : JU/SJ
 Sample : K2168-17
 Misc :
 ALS Vial : 36 Sample Multiplier: 1

Instrument :
 BNA_M
 ClientSampled :
 BF659

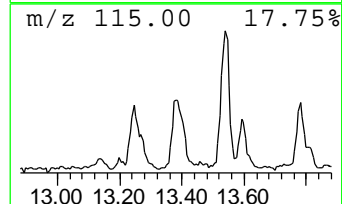
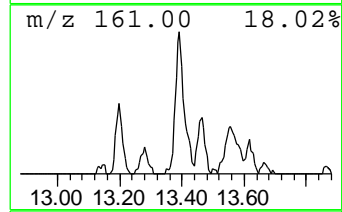
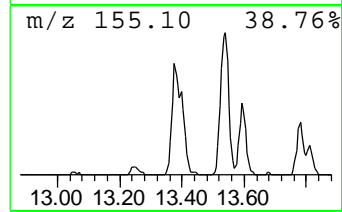
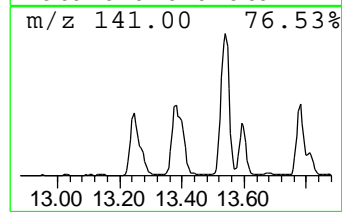
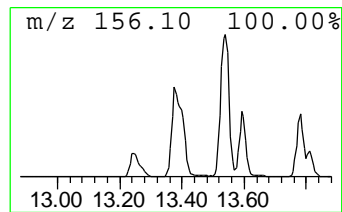
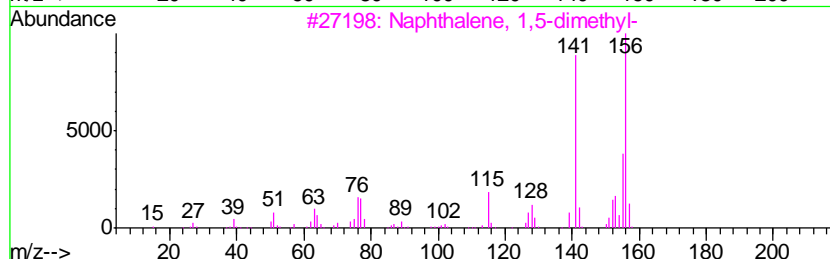
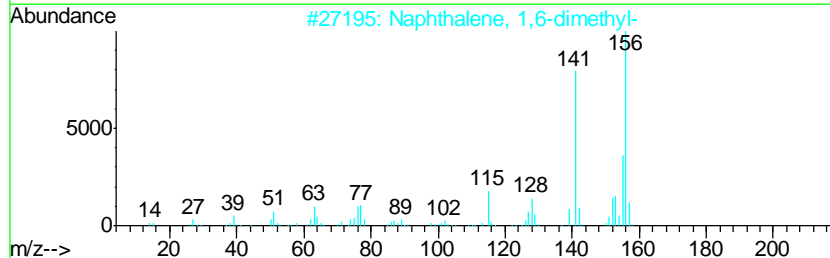
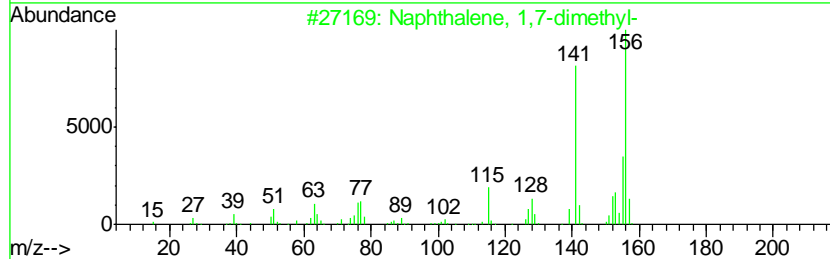
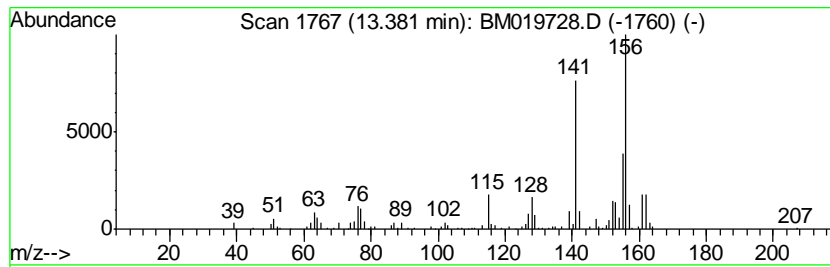
Quant Method : Z:\SVOASRV\HPCHEM1\BNA_M\METHODS\SOM-EPA-BM032219MA.M
 Quant Title : SVOA CALIBRATION

TIC Library : C:\DATABASE\NIST02.L
 TIC Integration Parameters: LSCINT.P

 Peak Number 3 Naphthalene, 1,7-dimethyl- Concentration Rank 4

R.T.	EstConc	Area	Relative to ISTD	R.T.
13.38	4.81 ng/ul	546963	Acenaphthene-d10	14.23

Hit#	of	Tentative ID	MW	MolForm	CAS#	Qual
1	5	Naphthalene, 1,7-dimethyl-	156	C12H12	000575-37-1	98
2		Naphthalene, 1,6-dimethyl-	156	C12H12	000575-43-9	98
3		Naphthalene, 1,5-dimethyl-	156	C12H12	000571-61-9	98
4		Naphthalene, 2,6-dimethyl-	156	C12H12	000581-42-0	97
5		Naphthalene, 1,3-dimethyl-	156	C12H12	000575-41-7	96



Data Path : Z:\SVOASRV\HPCHEM1\BNA_M\DATA\BM040219\
 Data File : BM019728.D
 Acq On : 03 Apr 2019 13:52
 Operator : JU/SJ
 Sample : K2168-17
 Misc :
 ALS Vial : 36 Sample Multiplier: 1

Instrument :
 BNA_M
 ClientSampled :
 BF659

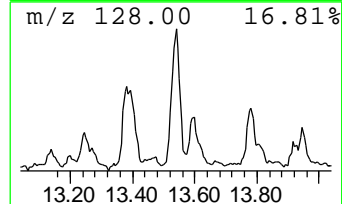
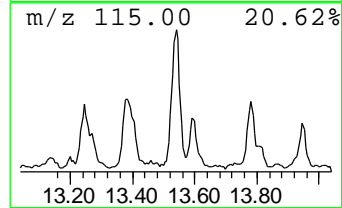
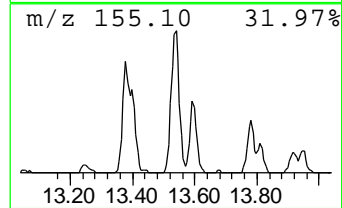
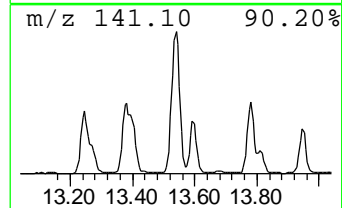
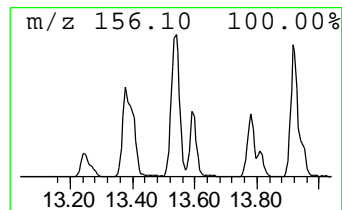
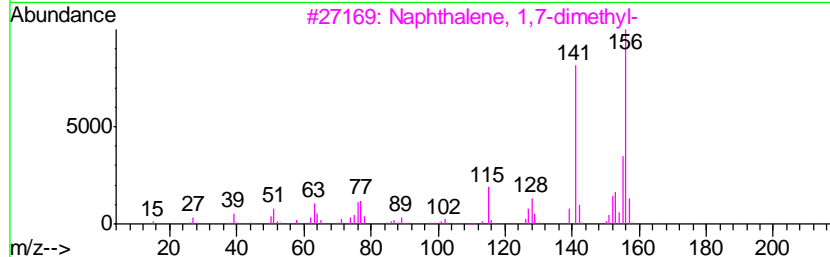
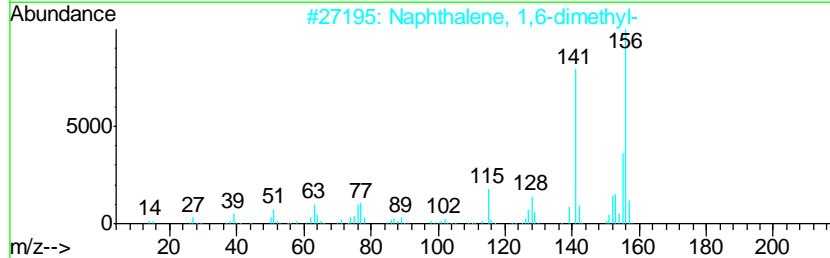
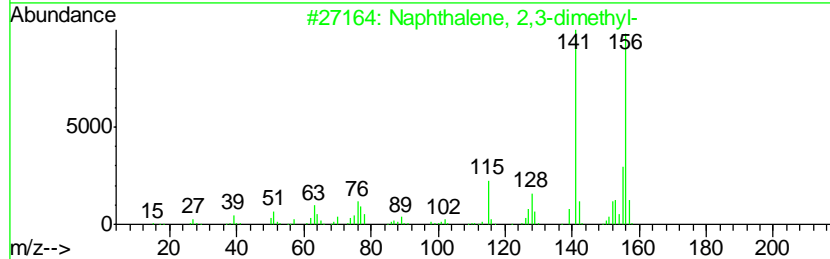
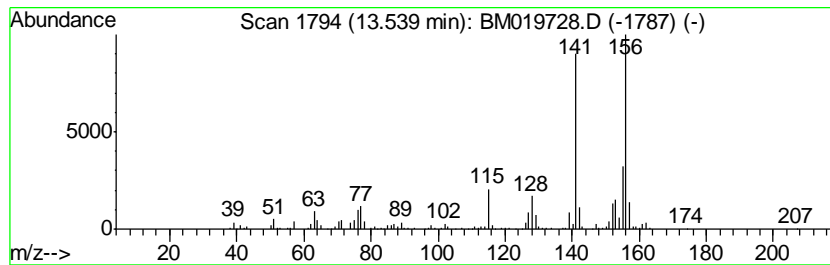
Quant Method : Z:\SVOASRV\HPCHEM1\BNA_M\METHODS\SOM-EPA-BM032219MA.M
 Quant Title : SVOA CALIBRATION

TIC Library : C:\DATABASE\NIST02.L
 TIC Integration Parameters: LSCINT.P

 Peak Number 4 Naphthalene, 2,3-dimethyl- Concentration Rank 1

R.T.	EstConc	Area	Relative to ISTD	R.T.
13.54	5.72 ng/ul	649668	Acenaphthene-d10	14.23

Hit#	of	Tentative ID	MW	MolForm	CAS#	Qual
1	5	Naphthalene, 2,3-dimethyl-	156	C12H12	000581-40-8	98
2		Naphthalene, 1,6-dimethyl-	156	C12H12	000575-43-9	98
3		Naphthalene, 1,7-dimethyl-	156	C12H12	000575-37-1	98
4		Naphthalene, 2,6-dimethyl-	156	C12H12	000581-42-0	98
5		Naphthalene, 2,6-dimethyl-	156	C12H12	000581-42-0	97



Data Path : Z:\SVOASRV\HPCHEM1\BNA_M\DATA\BM040219\
 Data File : BM019728.D
 Acq On : 03 Apr 2019 13:52
 Operator : JU/SJ
 Sample : K2168-17
 Misc :
 ALS Vial : 36 Sample Multiplier: 1

Instrument :
 BNA_M
 ClientSampled :
 BF659

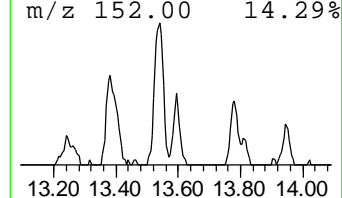
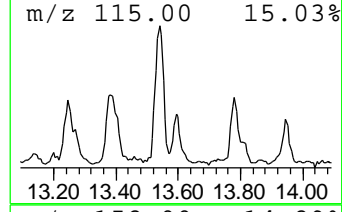
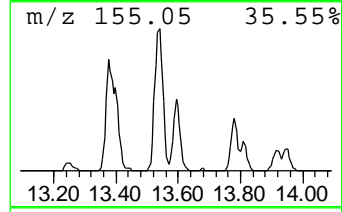
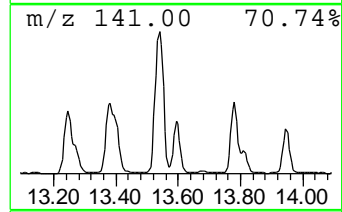
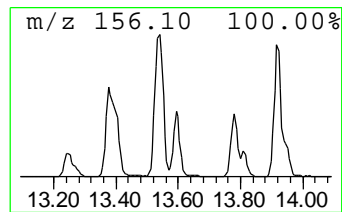
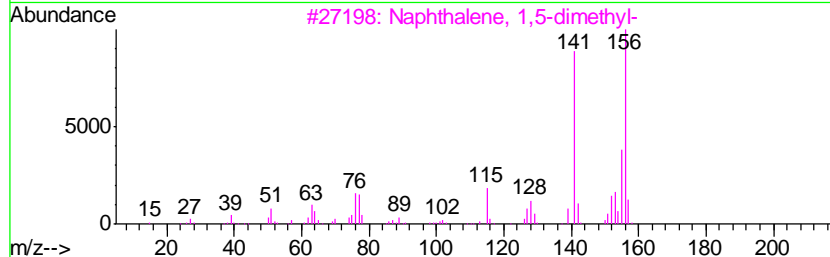
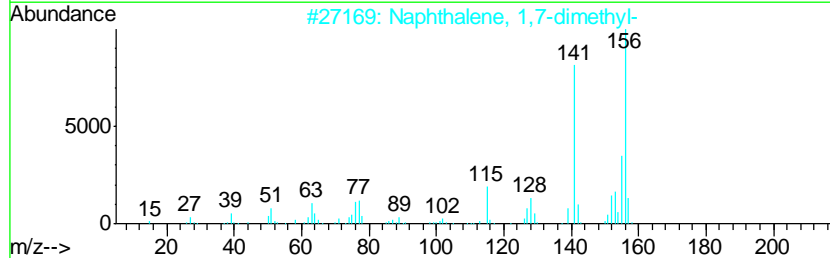
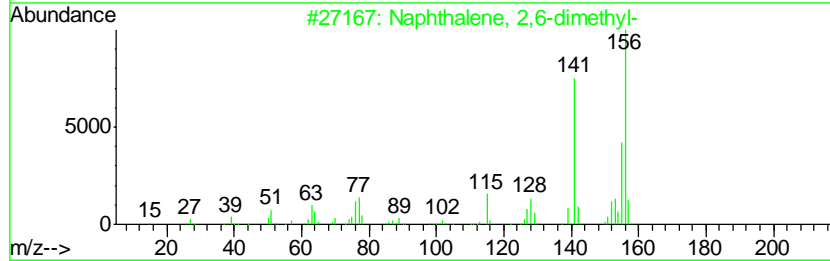
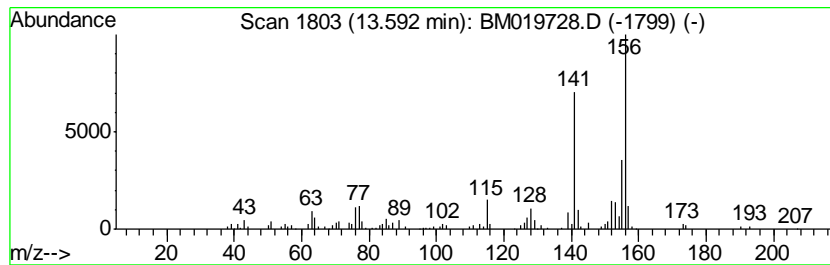
Quant Method : Z:\SVOASRV\HPCHEM1\BNA_M\METHODS\SOM-EPA-BM032219MA.M
 Quant Title : SVOA CALIBRATION

TIC Library : C:\DATABASE\NIST02.L
 TIC Integration Parameters: LSCINT.P

 Peak Number 5 Naphthalene, 2,6-dimethyl- Concentration Rank 18

R.T.	EstConc	Area	Relative to ISTD	R.T.
13.59	2.04 ng/ul	231976	Acenaphthene-d10	14.23

Hit#	of	Tentative ID	MW	MolForm	CAS#	Qual
1	5	Naphthalene, 2,6-dimethyl-	156	C12H12	000581-42-0	98
2		Naphthalene, 1,7-dimethyl-	156	C12H12	000575-37-1	98
3		Naphthalene, 1,5-dimethyl-	156	C12H12	000571-61-9	98
4		Naphthalene, 2,6-dimethyl-	156	C12H12	000581-42-0	98
5		Naphthalene, 1,7-dimethyl-	156	C12H12	000575-37-1	97



Data Path : Z:\SVOASRV\HPCHEM1\BNA_M\DATA\BM040219\
 Data File : BM019728.D
 Acq On : 03 Apr 2019 13:52
 Operator : JU/SJ
 Sample : K2168-17
 Misc :
 ALS Vial : 36 Sample Multiplier: 1

Instrument :
 BNA_M
 ClientSampled :
 BF659

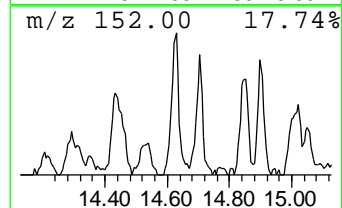
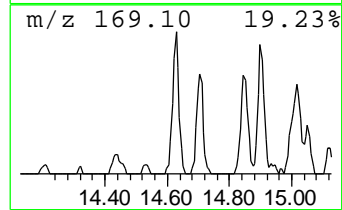
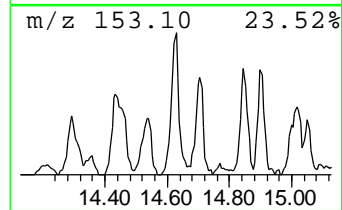
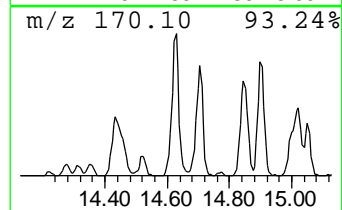
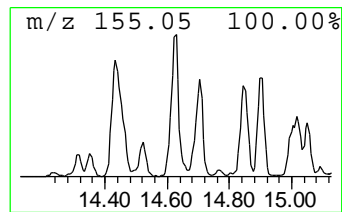
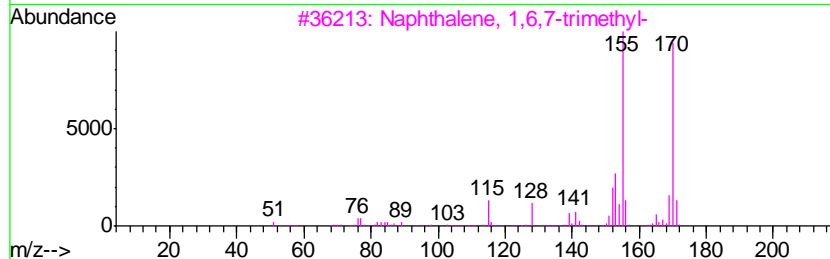
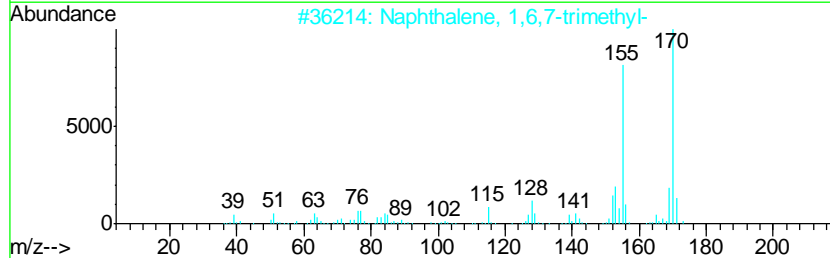
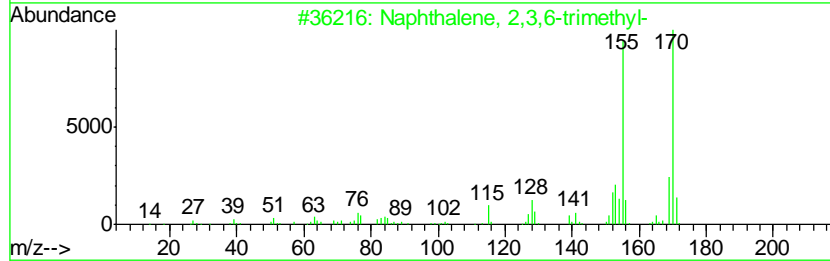
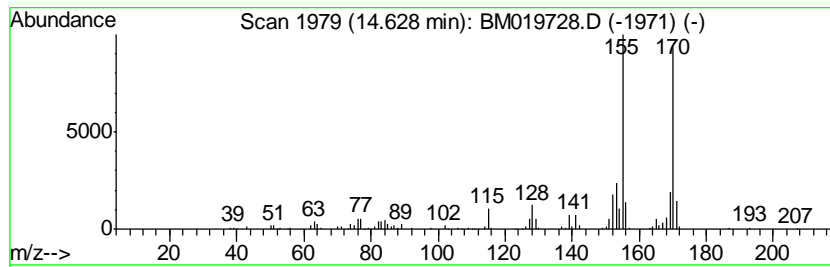
Quant Method : Z:\SVOASRV\HPCHEM1\BNA_M\METHODS\SOM-EPA-BM032219MA.M
 Quant Title : SVOA CALIBRATION

TIC Library : C:\DATABASE\NIST02.L
 TIC Integration Parameters: LSCINT.P

 Peak Number 6 Naphthalene, 2,3,6-trimethyl- Concentration Rank 10

R.T.	EstConc	Area	Relative to ISTD	R.T.
14.63	2.92 ng/ul	331371	Acenaphthene-d10	14.23

Hit#	of	Tentative ID	MW	MolForm	CAS#	Qual
1	5	Naphthalene, 2,3,6-trimethyl-	170	C13H14	000829-26-5	98
2		Naphthalene, 1,6,7-trimethyl-	170	C13H14	002245-38-7	97
3		Naphthalene, 1,6,7-trimethyl-	170	C13H14	002245-38-7	97
4		Naphthalene, 1,4,6-trimethyl-	170	C13H14	002131-42-2	97
5		Naphthalene, 2,3,6-trimethyl-	170	C13H14	000829-26-5	96



Data Path : Z:\SVOASRV\HPCHEM1\BNA_M\DATA\BM040219\
 Data File : BM019728.D
 Acq On : 03 Apr 2019 13:52
 Operator : JU/SJ
 Sample : K2168-17
 Misc :
 ALS Vial : 36 Sample Multiplier: 1

Instrument :
 BNA_M
 ClientSampleId :
 BF659

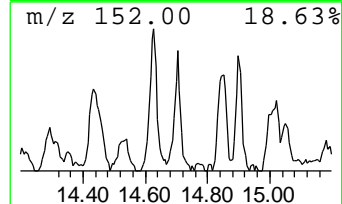
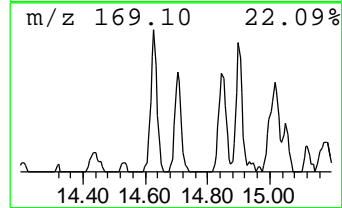
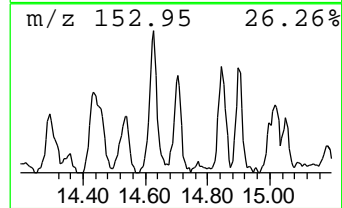
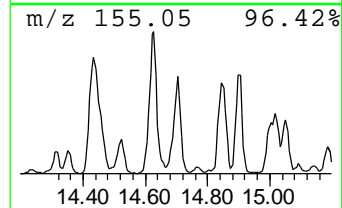
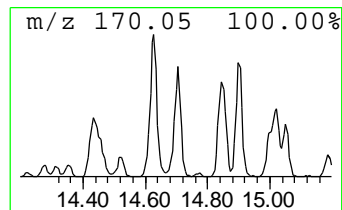
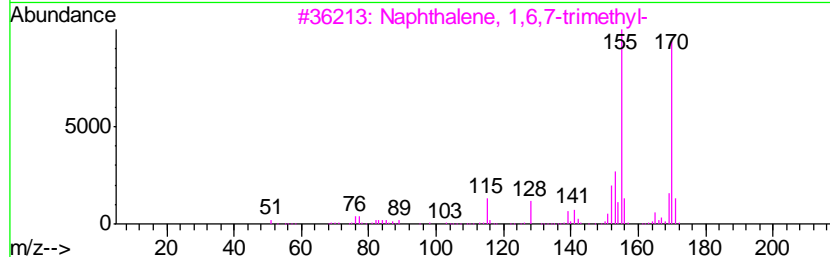
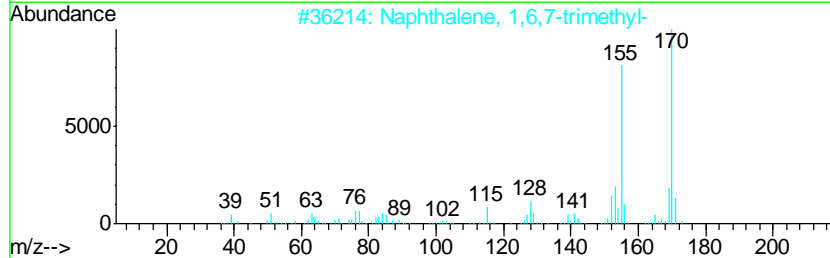
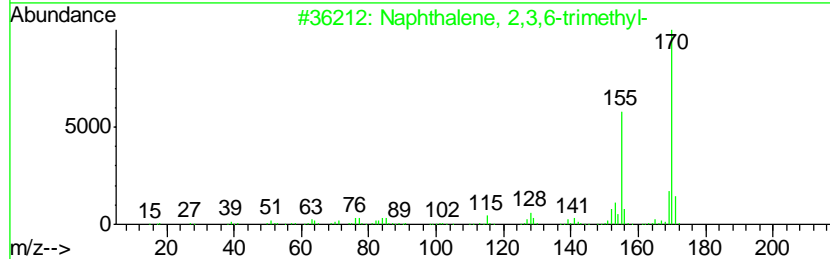
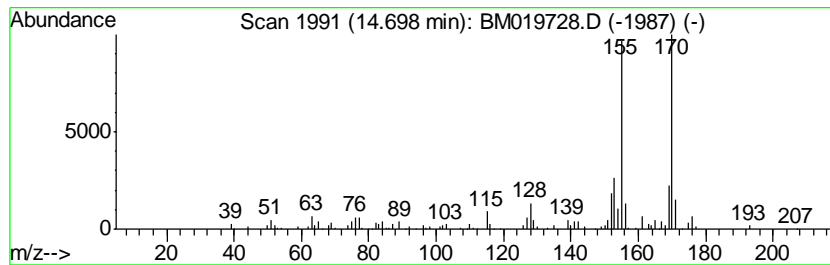
Quant Method : Z:\SVOASRV\HPCHEM1\BNA_M\METHODS\SOM-EPA-BM032219MA.M
 Quant Title : SVOA CALIBRATION

TIC Library : C:\DATABASE\NIST02.L
 TIC Integration Parameters: LSCINT.P

 Peak Number 7 Naphthalene, 1,6,7-trimethyl- Concentration Rank 11

R.T.	EstConc	Area	Relative to ISTD	R.T.
14.70	2.85 ng/ul	324209	Acenaphthene-d10	14.23

Hit#	of	Tentative ID	MW	MolForm	CAS#	Qual
1	5	Naphthalene, 2,3,6-trimethyl-	170	C13H14	000829-26-5	97
2		Naphthalene, 1,6,7-trimethyl-	170	C13H14	002245-38-7	97
3		Naphthalene, 1,6,7-trimethyl-	170	C13H14	002245-38-7	97
4		Naphthalene, 2,3,6-trimethyl-	170	C13H14	000829-26-5	97
5		Naphthalene, 2,3,6-trimethyl-	170	C13H14	000829-26-5	97



Data Path : Z:\SVOASRV\HPCHEM1\BNA_M\DATA\BM040219\
 Data File : BM019728.D
 Acq On : 03 Apr 2019 13:52
 Operator : JU/SJ
 Sample : K2168-17
 Misc :
 ALS Vial : 36 Sample Multiplier: 1

Instrument :
 BNA_M
 ClientSampleID :
 BF659

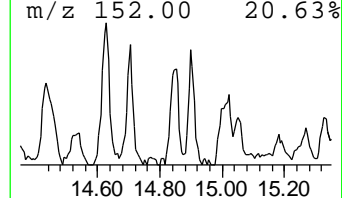
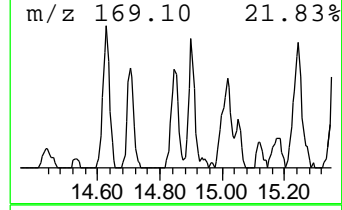
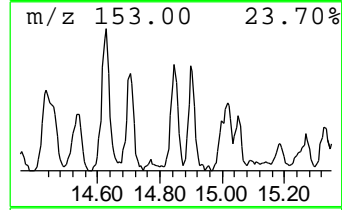
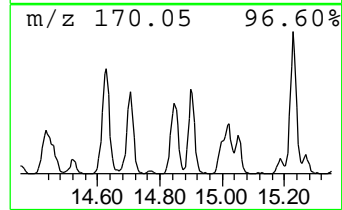
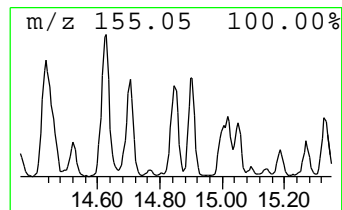
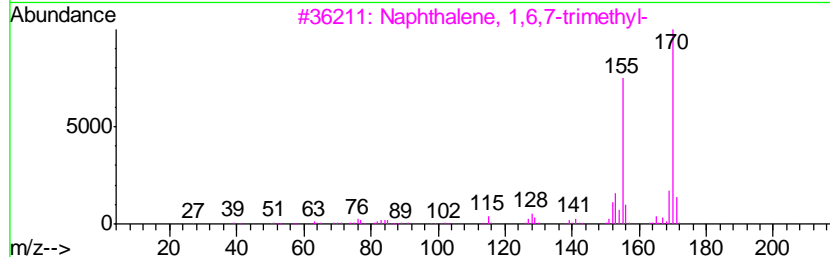
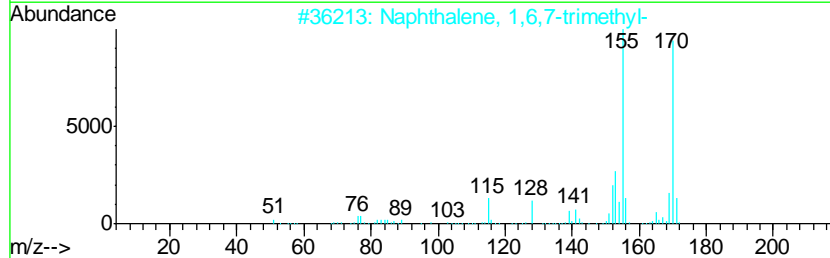
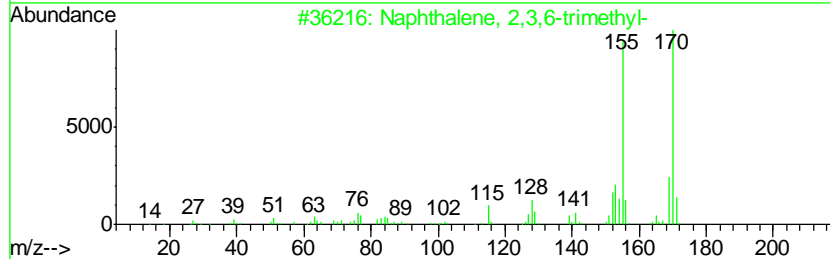
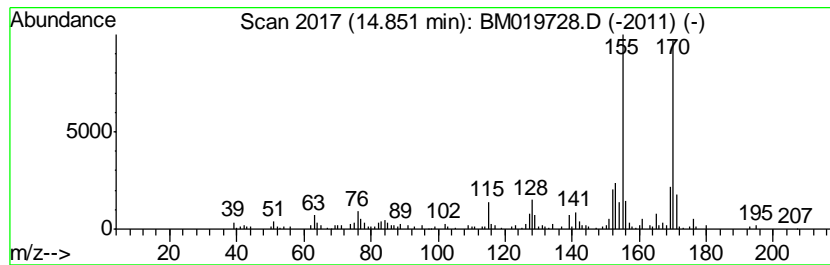
Quant Method : Z:\SVOASRV\HPCHEM1\BNA_M\METHODS\SOM-EPA-BM032219MA.M
 Quant Title : SVOA CALIBRATION

TIC Library : C:\DATABASE\NIST02.L
 TIC Integration Parameters: LSCINT.P

 Peak Number 8 unknown-01 Concentration Rank 13

R.T.	EstConc	Area	Relative to ISTD	R.T.
14.85	2.57 ng/ul	291575	Acenaphthene-d10	14.23

Hit#	of	Tentative ID	MW	MolForm	CAS#	Qual
1	5	Naphthalene, 2,3,6-trimethyl-	170	C13H14	000829-26-5	98
2		Naphthalene, 1,6,7-trimethyl-	170	C13H14	002245-38-7	98
3		Naphthalene, 1,6,7-trimethyl-	170	C13H14	002245-38-7	97
4		Naphthalene, 1,6,7-trimethyl-	170	C13H14	002245-38-7	96
5		Naphthalene, 2,3,6-trimethyl-	170	C13H14	000829-26-5	96



Data Path : Z:\SVOASRV\HPCHEM1\BNA_M\DATA\BM040219\
 Data File : BM019728.D
 Acq On : 03 Apr 2019 13:52
 Operator : JU/SJ
 Sample : K2168-17
 Misc :
 ALS Vial : 36 Sample Multiplier: 1

Instrument :
 BNA_M
 ClientSampleID :
 BF659

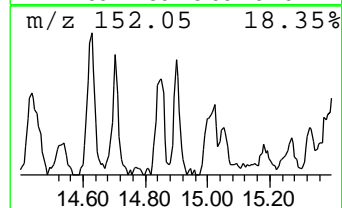
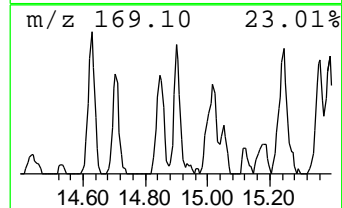
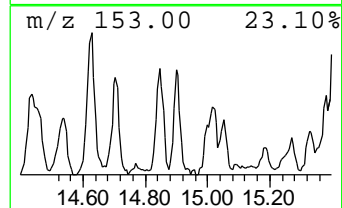
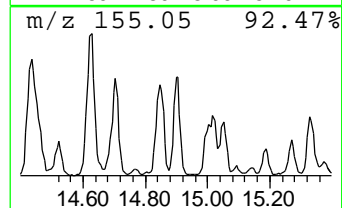
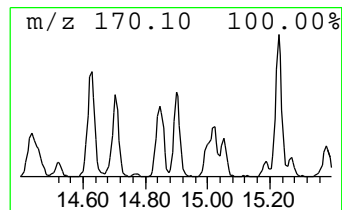
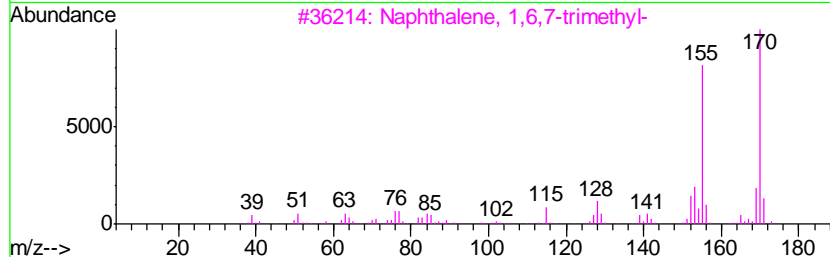
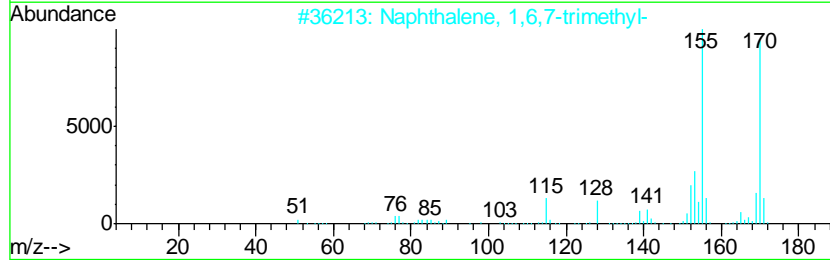
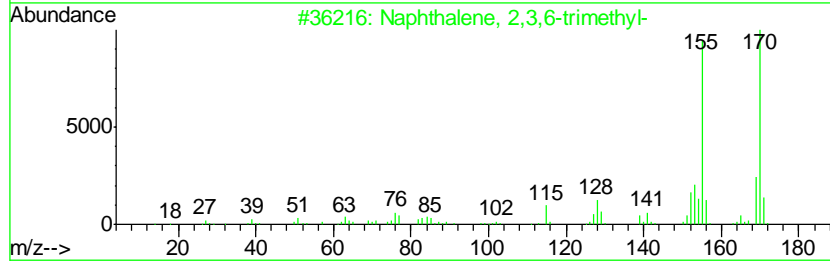
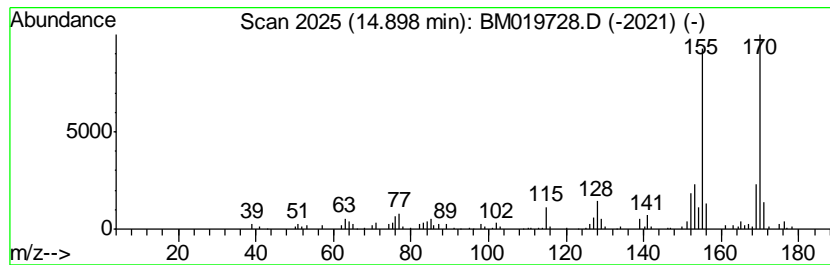
Quant Method : Z:\SVOASRV\HPCHEM1\BNA_M\METHODS\SOM-EPA-BM032219MA.M
 Quant Title : SVOA CALIBRATION

TIC Library : C:\DATABASE\NIST02.L
 TIC Integration Parameters: LSCINT.P

 Peak Number 9 Naphthalene, 1,4,6-trimethyl- Concentration Rank 20

R.T.	EstConc	Area	Relative to ISTD	R.T.
14.90	2.03 ng/ul	231074	Acenaphthene-d10	14.23

Hit#	of	Tentative ID	MW	MolForm	CAS#	Qual
1	5	Naphthalene, 2,3,6-trimethyl-	170	C13H14	000829-26-5	98
2		Naphthalene, 1,6,7-trimethyl-	170	C13H14	002245-38-7	96
3		Naphthalene, 1,6,7-trimethyl-	170	C13H14	002245-38-7	96
4		Naphthalene, 2,3,6-trimethyl-	170	C13H14	000829-26-5	96
5		Naphthalene, 1,4,6-trimethyl-	170	C13H14	002131-42-2	96



Data Path : Z:\SVOASRV\HPCHEM1\BNA_M\DATA\BM040219\
 Data File : BM019728.D
 Acq On : 03 Apr 2019 13:52
 Operator : JU/SJ
 Sample : K2168-17
 Misc :
 ALS Vial : 36 Sample Multiplier: 1

Instrument :
 BNA_M
 ClientSampled :
 BF659

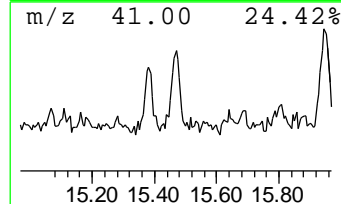
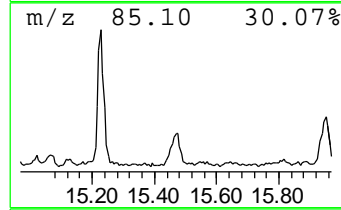
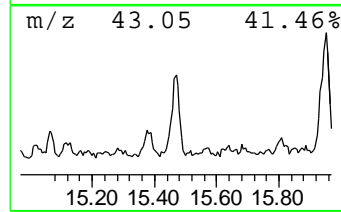
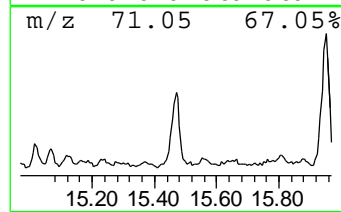
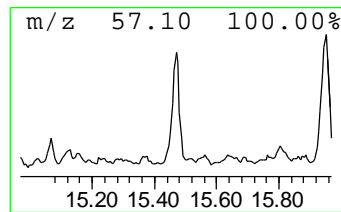
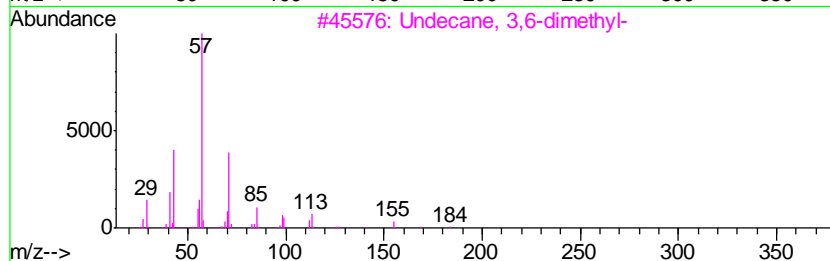
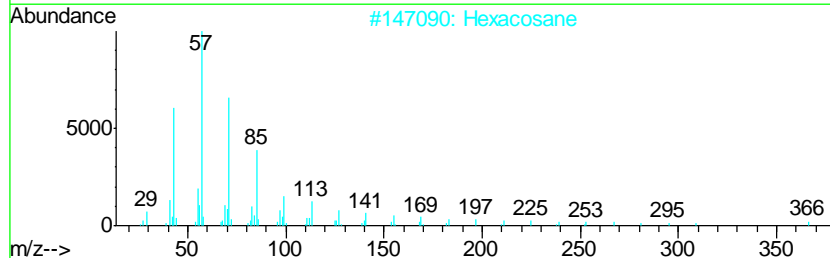
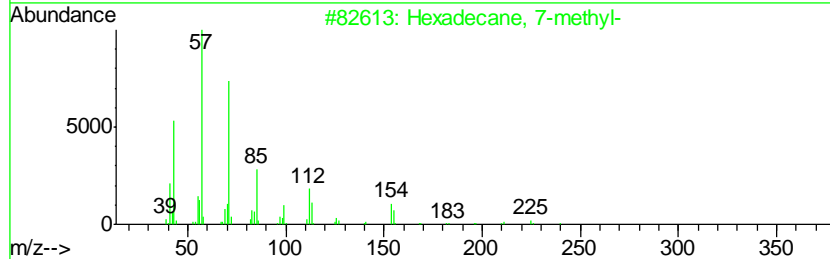
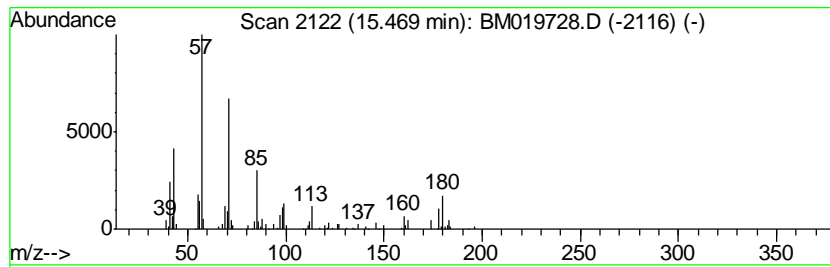
Quant Method : Z:\SVOASRV\HPCHEM1\BNA_M\METHODS\SOM-EPA-BM032219MA.M
 Quant Title : SVOA CALIBRATION

TIC Library : C:\DATABASE\NIST02.L
 TIC Integration Parameters: LSCINT.P

 Peak Number 10 (DEL) Alkane: Straight-Chai... Concentration Rank 12

R.T.	EstConc	Area	Relative to ISTD	R.T.
15.47	2.69 ng/ul	305212	Acenaphthene-d10	14.23

Hit#	of	Tentative ID	MW	MolForm	CAS#	Qual
1	5	Hexadecane, 7-methyl-	240	C17H36	026730-20-1	59
2		Hexacosane	366	C26H54	000630-01-3	59
3		Undecane, 3,6-dimethyl-	184	C13H28	017301-28-9	58
4		Hexadecane, 2,6,10,14-tetramethyl-	282	C20H42	000638-36-8	52
5		Dodecane, 2-methyl-	184	C13H28	001560-97-0	52



Data Path : Z:\SVOASRV\HPCHEM1\BNA_M\DATA\BM040219\
 Data File : BM019728.D
 Acq On : 03 Apr 2019 13:52
 Operator : JU/SJ
 Sample : K2168-17
 Misc :
 ALS Vial : 36 Sample Multiplier: 1

Instrument :
 BNA_M
 ClientSampled :
 BF659

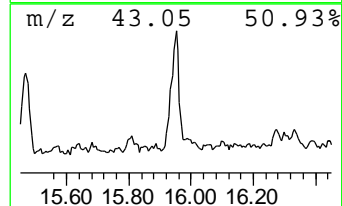
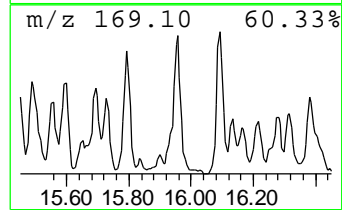
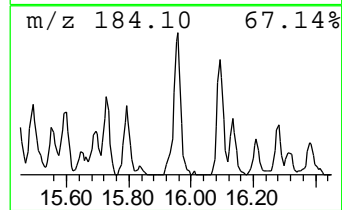
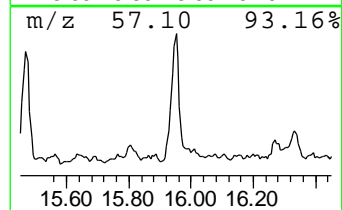
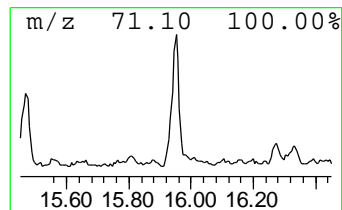
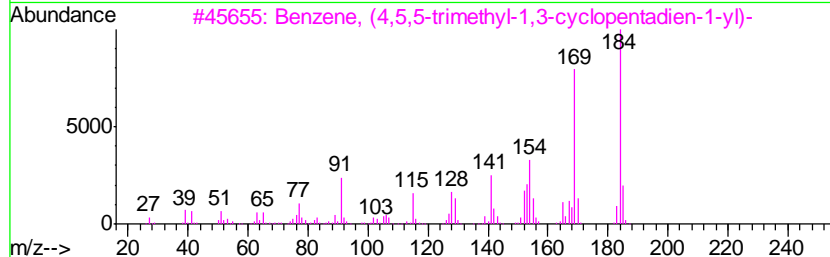
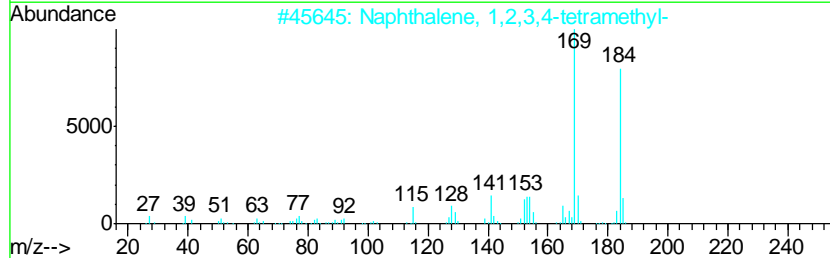
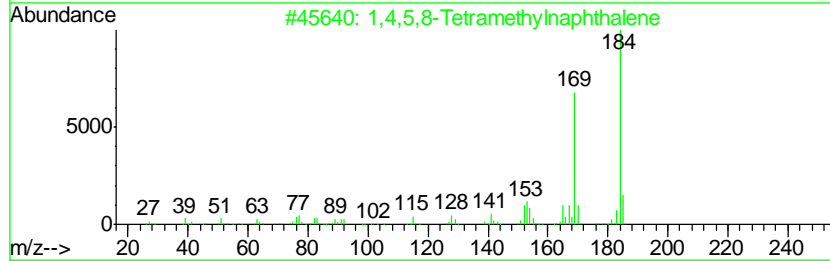
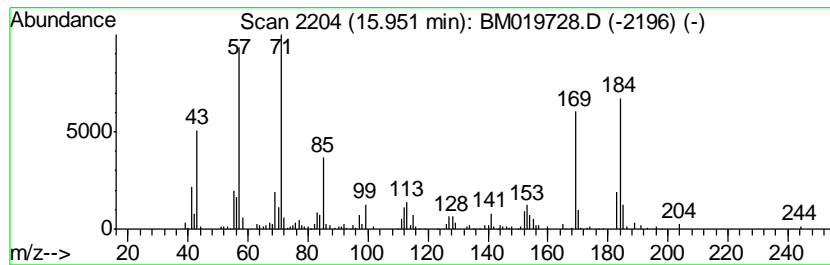
Quant Method : Z:\SVOASRV\HPCHEM1\BNA_M\METHODS\SOM-EPA-BM032219MA.M
 Quant Title : SVOA CALIBRATION

TIC Library : C:\DATABASE\NIST02.L
 TIC Integration Parameters: LSCINT.P

 Peak Number 11 1,4,5,8-Tetramethylnaphthalene Concentration Rank 14

R.T.	EstConc	Area	Relative to ISTD	R.T.
15.95	2.53 ng/ul	326711	Phenanthrene-d10	16.99

Hit#	of	Tentative ID	MW	MolForm	CAS#	Qual
1	5	1,4,5,8-Tetramethylnaphthalene	184	C14H16	002717-39-7	50
2		Naphthalene, 1,2,3,4-tetramethyl-	184	C14H16	003031-15-0	45
3		Benzene, (4,5,5-trimethyl-1,3-cy...	184	C14H16	033930-85-7	45
4		1,1'-Biphenyl, 2-methoxy-	184	C13H12O	000086-26-0	45
5		Cyclopentene, 1,2-dimethyl-4-met...	184	C14H16	1000152-22-4	38



Data Path : Z:\SVOASRV\HPCHEM1\BNA_M\DATA\BM040219\
 Data File : BM019728.D
 Acq On : 03 Apr 2019 13:52
 Operator : JU/SJ
 Sample : K2168-17
 Misc :
 ALS Vial : 36 Sample Multiplier: 1

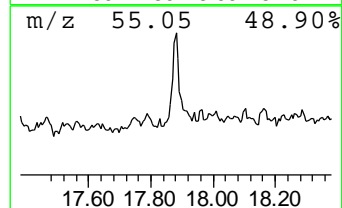
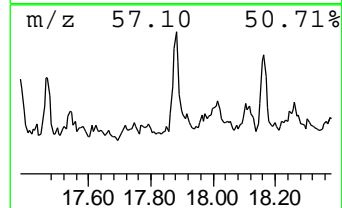
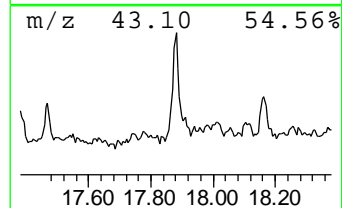
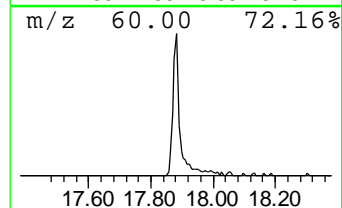
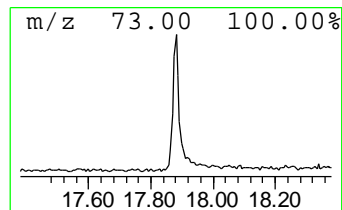
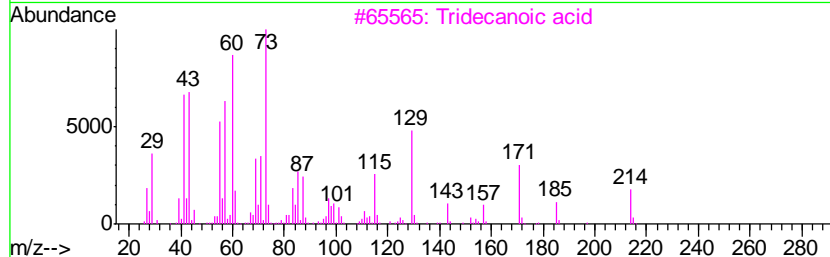
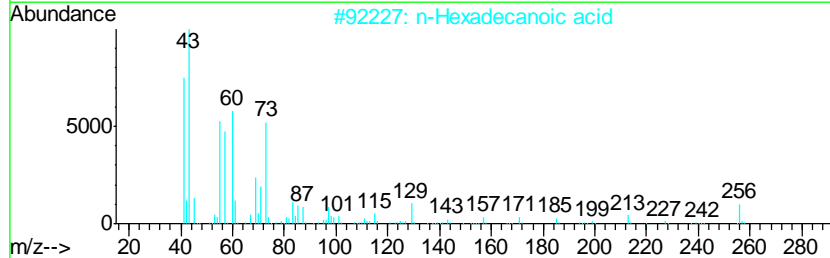
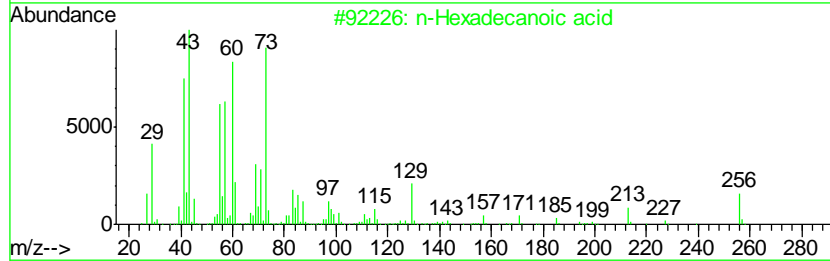
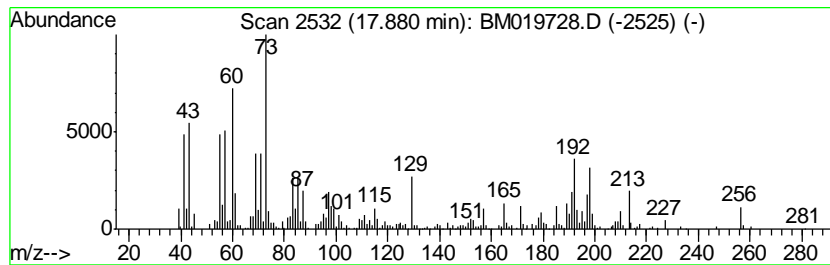
Instrument :
 BNA_M
 ClientSampled :
 BF659

Quant Method : Z:\SVOASRV\HPCHEM1\BNA_M\METHODS\SOM-EPA-BM032219MA.M
 Quant Title : SVOA CALIBRATION

TIC Library : C:\DATABASE\NIST02.L
 TIC Integration Parameters: LSCINT.P

 Peak Number 12 n-Hexadecanoic acid Concentration Rank 3

R.T.	EstConc	Area	Relative to ISTD	R.T.		
17.88	4.86 ng/ul	627134	Phenanthrene-d10	16.99		
Hit# of	5	Tentative ID	MW	MolForm	CAS#	Qual
1		n-Hexadecanoic acid	256	C16H32O2	000057-10-3	90
2		n-Hexadecanoic acid	256	C16H32O2	000057-10-3	90
3		Tridecanoic acid	214	C13H26O2	000638-53-9	86
4		Pentadecanoic acid	242	C15H30O2	001002-84-2	64
5		n-Hexadecanoic acid	256	C16H32O2	000057-10-3	50



Data Path : Z:\SVOASRV\HPCHEM1\BNA_M\DATA\BM040219\
 Data File : BM019728.D
 Acq On : 03 Apr 2019 13:52
 Operator : JU/SJ
 Sample : K2168-17
 Misc :
 ALS Vial : 36 Sample Multiplier: 1

Instrument :
 BNA_M
 ClientSampled :
 BF659

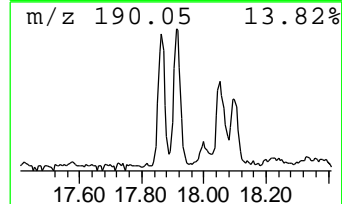
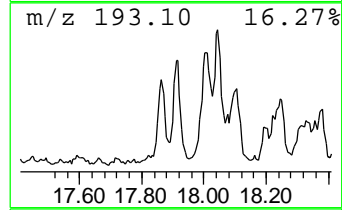
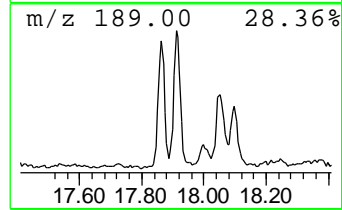
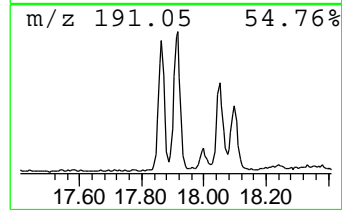
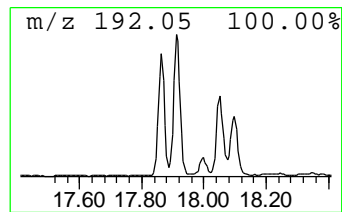
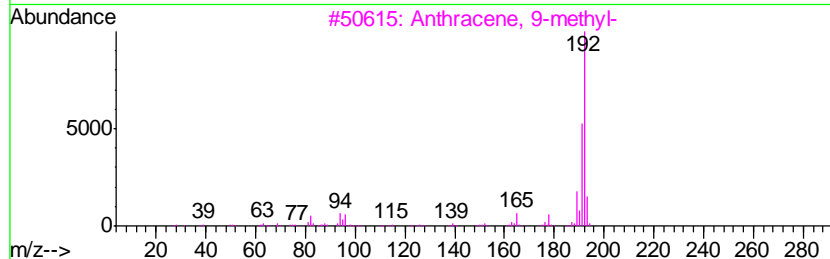
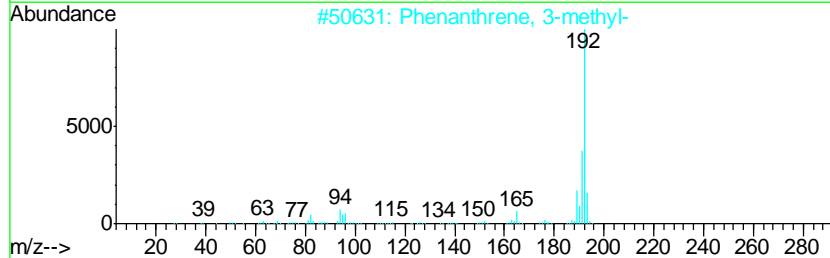
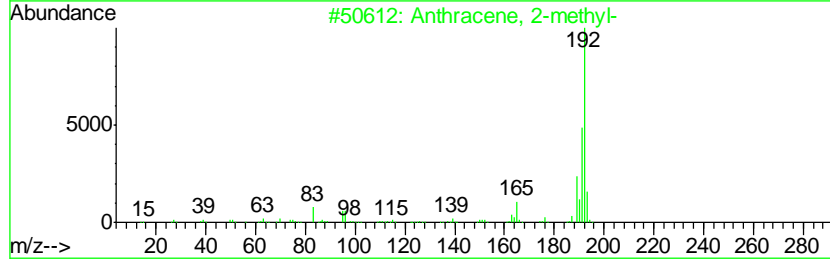
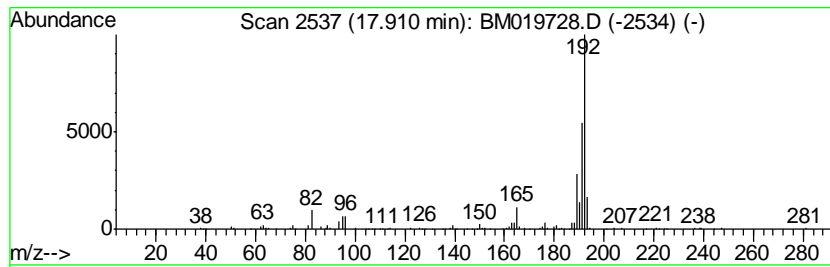
Quant Method : Z:\SVOASRV\HPCHEM1\BNA_M\METHODS\SOM-EPA-BM032219MA.M
 Quant Title : SVOA CALIBRATION

TIC Library : C:\DATABASE\NIST02.L
 TIC Integration Parameters: LSCINT.P

 Peak Number 13 Anthracene, 2-methyl- Concentration Rank 7

R.T.	EstConc	Area	Relative to ISTD	R.T.
17.91	3.20 ng/ul	412467	Phenanthrene-d10	16.99

Hit#	of	Tentative ID	MW	MolForm	CAS#	Qual
1	5	Anthracene, 2-methyl-	192	C15H12	000613-12-7	93
2		Phenanthrene, 3-methyl-	192	C15H12	000832-71-3	93
3		Anthracene, 9-methyl-	192	C15H12	000779-02-2	91
4		Phenanthrene, 1-methyl-	192	C15H12	000832-69-9	91
5		Phenanthrene, 2-methyl-	192	C15H12	002531-84-2	91



Data Path : Z:\SVOASRV\HPCHEM1\BNA_M\DATA\BM040219\
 Data File : BM019728.D
 Acq On : 03 Apr 2019 13:52
 Operator : JU/SJ
 Sample : K2168-17
 Misc :
 ALS Vial : 36 Sample Multiplier: 1

Instrument :
 BNA_M
 ClientSampleID :
 BF659

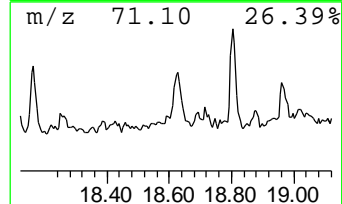
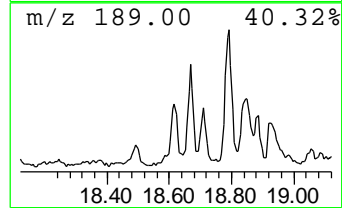
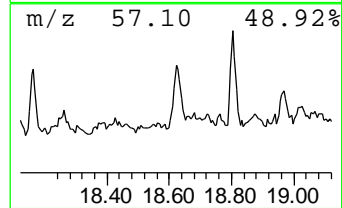
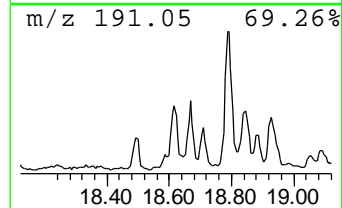
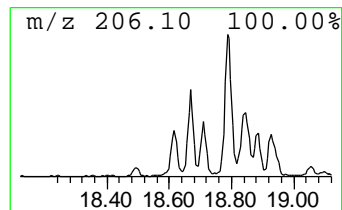
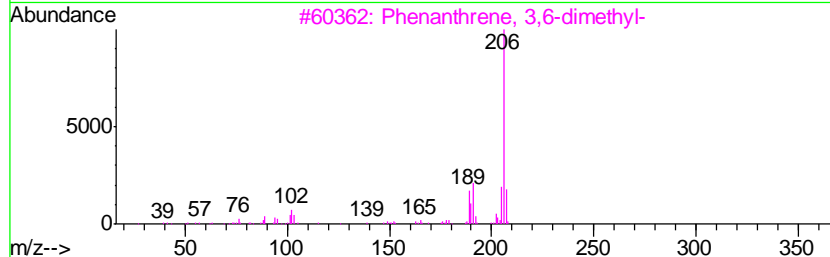
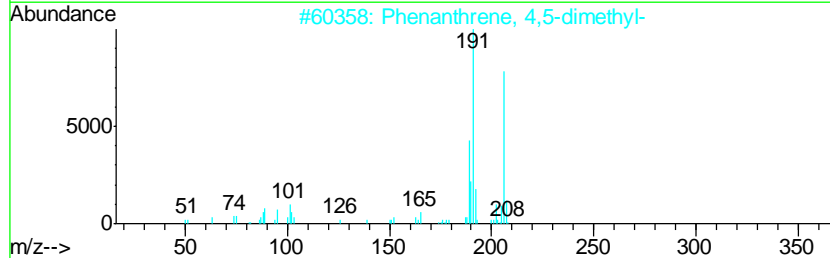
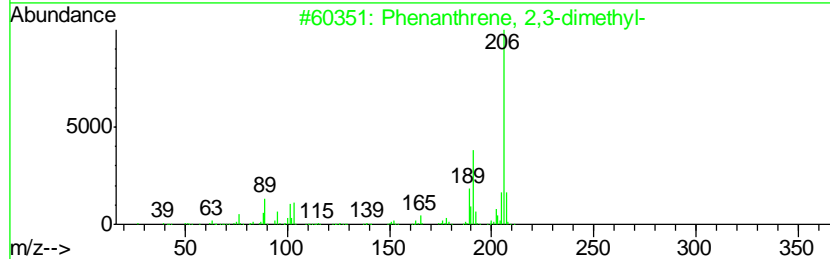
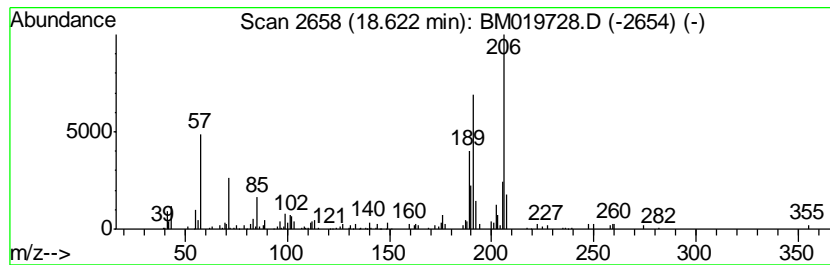
Quant Method : Z:\SVOASRV\HPCHEM1\BNA_M\METHODS\SOM-EPA-BM032219MA.M
 Quant Title : SVOA CALIBRATION

TIC Library : C:\DATABASE\NIST02.L
 TIC Integration Parameters: LSCINT.P

 Peak Number 14 Phenanthrene, 2,3-dimethyl- Concentration Rank 19

R.T.	EstConc	Area	Relative to ISTD	R.T.
18.62	2.03 ng/ul	262604	Phenanthrene-d10	16.99

Hit#	of	Tentative ID	MW	MolForm	CAS#	Qual
1	5	Phenanthrene, 2,3-dimethyl-	206	C16H14	003674-65-5	90
2		Phenanthrene, 4,5-dimethyl-	206	C16H14	003674-69-9	87
3		Phenanthrene, 3,6-dimethyl-	206	C16H14	001576-67-6	87
4		Phenanthrene, 2,5-dimethyl-	206	C16H14	003674-66-6	83
5		Phenanthrene, 3,6-dimethyl-	206	C16H14	001576-67-6	81



Data Path : Z:\SVOASRV\HPCHEM1\BNA_M\DATA\BM040219\
 Data File : BM019728.D
 Acq On : 03 Apr 2019 13:52
 Operator : JU/SJ
 Sample : K2168-17
 Misc :
 ALS Vial : 36 Sample Multiplier: 1

Instrument :
 BNA_M
 ClientSampleID :
 BF659

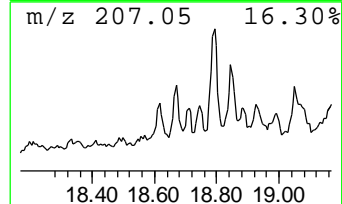
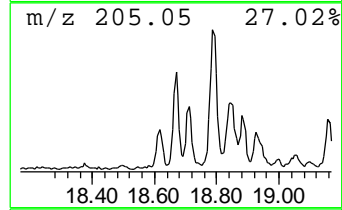
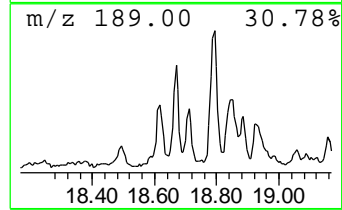
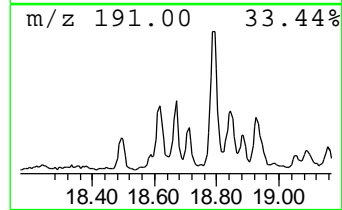
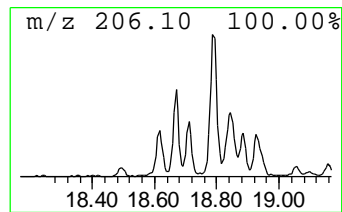
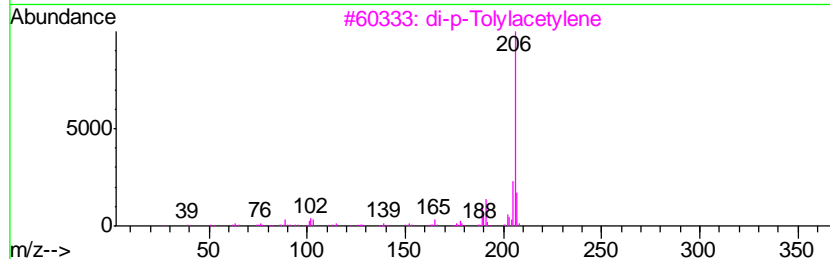
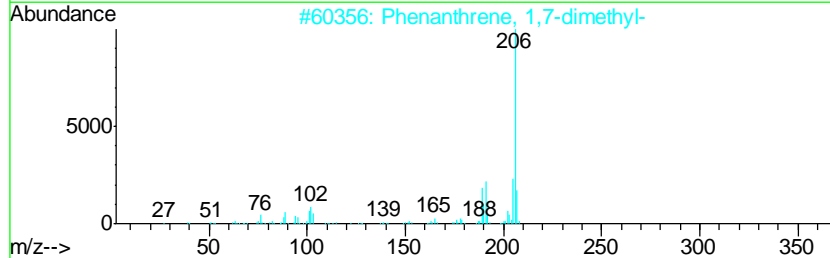
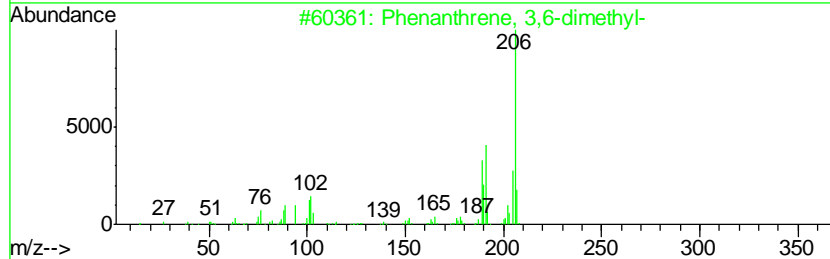
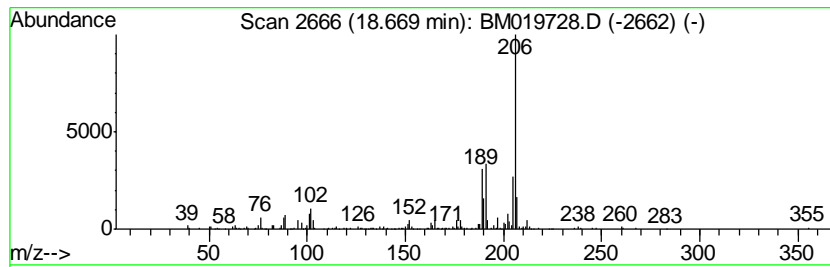
Quant Method : Z:\SVOASRV\HPCHEM1\BNA_M\METHODS\SOM-EPA-BM032219MA.M
 Quant Title : SVOA CALIBRATION

TIC Library : C:\DATABASE\NIST02.L
 TIC Integration Parameters: LSCINT.P

 Peak Number 15 Phenanthrene, 3,6-dimethyl- Concentration Rank 15

R.T.	EstConc	Area	Relative to ISTD	R.T.
18.67	2.39 ng/ul	307927	Phenanthrene-d10	16.99

Hit#	of	Tentative ID	MW	MolForm	CAS#	Qual
1	5	Phenanthrene, 3,6-dimethyl-	206	C16H14	001576-67-6	98
2		Phenanthrene, 1,7-dimethyl-	206	C16H14	000483-87-4	96
3		di-p-Tolylacetylene	206	C16H14	002789-88-0	94
4		Phenanthrene, 3,6-dimethyl-	206	C16H14	001576-67-6	93
5		di-p-Tolylacetylene	206	C16H14	002789-88-0	91



Data Path : Z:\SVOASRV\HPCHEM1\BNA_M\DATA\BM040219\
 Data File : BM019728.D
 Acq On : 03 Apr 2019 13:52
 Operator : JU/SJ
 Sample : K2168-17
 Misc :
 ALS Vial : 36 Sample Multiplier: 1

Instrument :
 BNA_M
 ClientSampleID :
 BF659

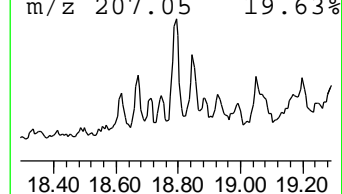
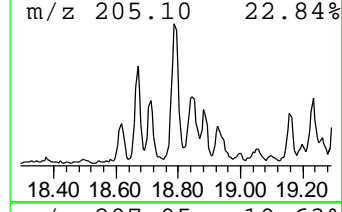
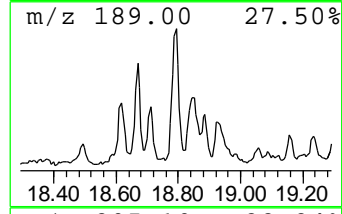
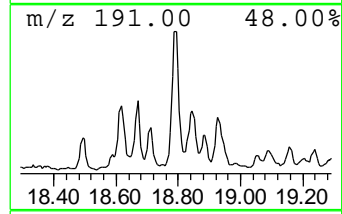
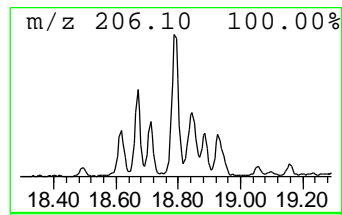
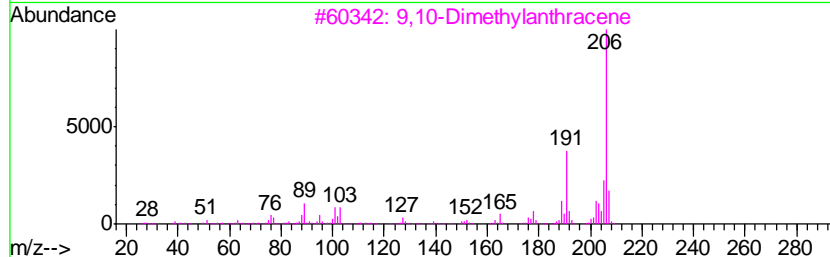
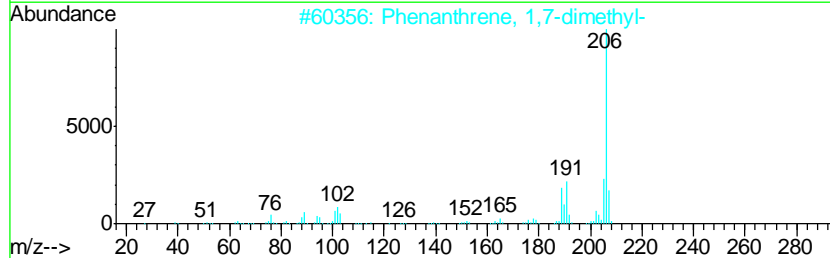
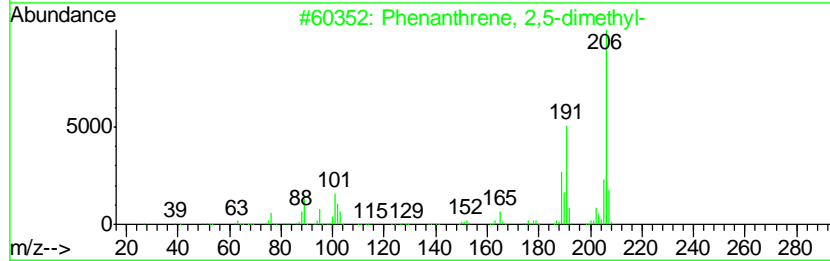
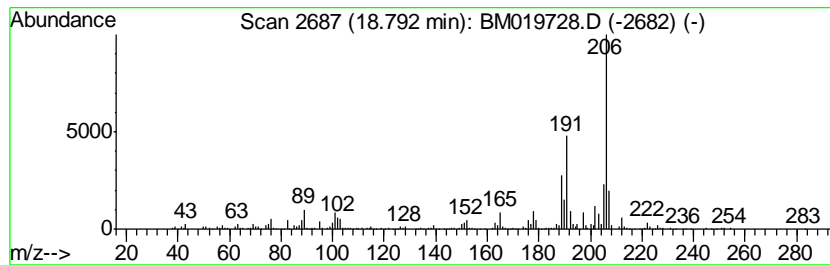
Quant Method : Z:\SVOASRV\HPCHEM1\BNA_M\METHODS\SOM-EPA-BM032219MA.M
 Quant Title : SVOA CALIBRATION

TIC Library : C:\DATABASE\NIST02.L
 TIC Integration Parameters: LSCINT.P

 Peak Number 16 Phenanthrene, 2,5-dimethyl- Concentration Rank 2

R.T.	EstConc	Area	Relative to ISTD	R.T.
18.79	5.32 ng/ul	686314	Phenanthrene-d10	16.99

Hit#	of	Tentative ID	MW	MolForm	CAS#	Qual
1	5	Phenanthrene, 2,5-dimethyl-	206	C16H14	003674-66-6	97
2		Phenanthrene, 1,7-dimethyl-	206	C16H14	000483-87-4	93
3		9,10-Dimethylanthracene	206	C16H14	000781-43-1	91
4		Phenanthrene, 2,3-dimethyl-	206	C16H14	003674-65-5	91
5		9,10-Dimethylanthracene	206	C16H14	000781-43-1	91



Data Path : Z:\SVOASRV\HPCHEM1\BNA_M\DATA\BM040219\
 Data File : BM019728.D
 Acq On : 03 Apr 2019 13:52
 Operator : JU/SJ
 Sample : K2168-17
 Misc :
 ALS Vial : 36 Sample Multiplier: 1

Instrument :
 BNA_M
 ClientSampled :
 BF659

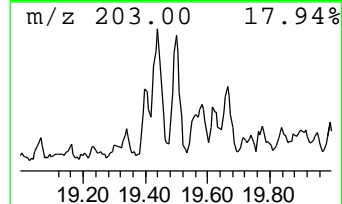
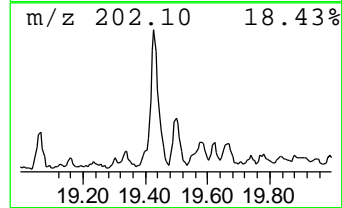
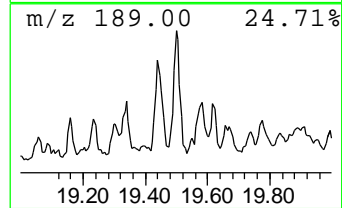
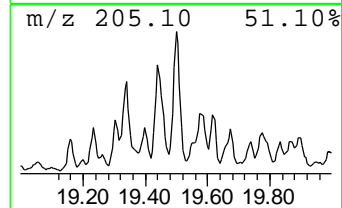
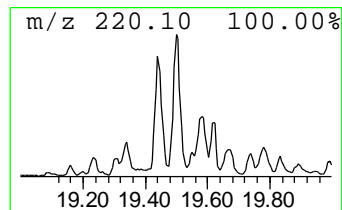
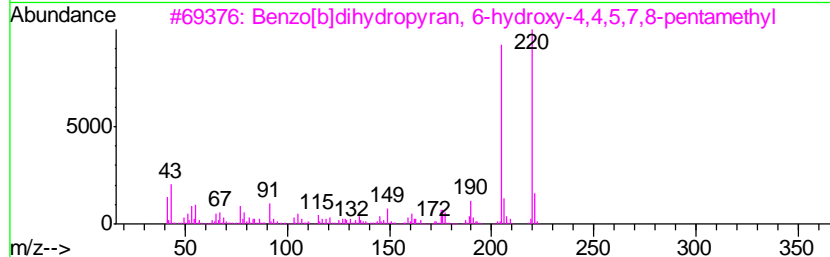
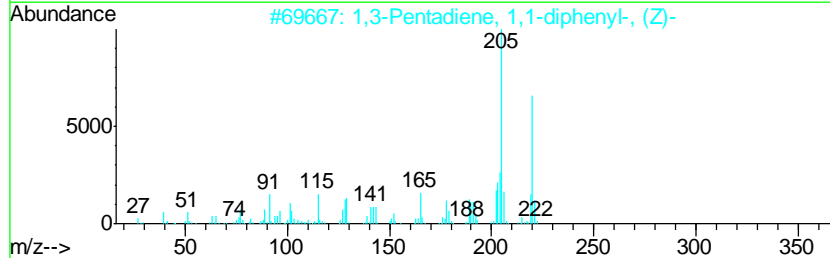
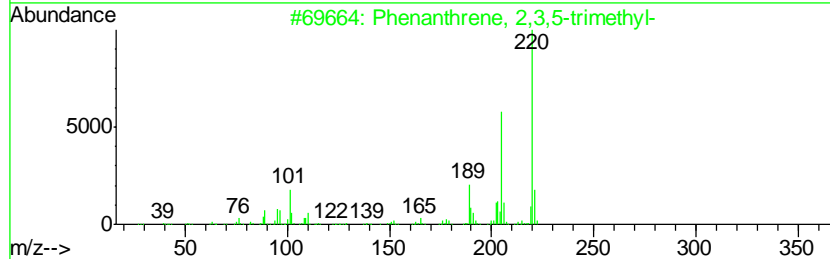
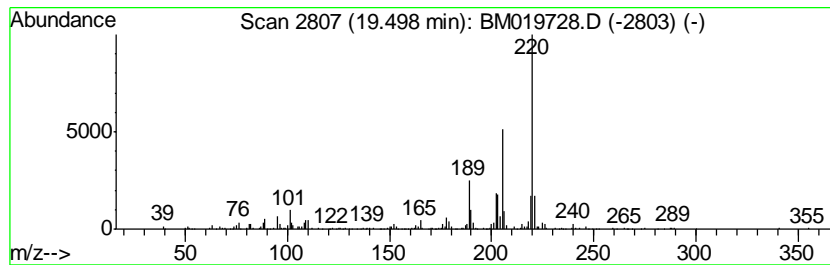
Quant Method : Z:\SVOASRV\HPCHEM1\BNA_M\METHODS\SOM-EPA-BM032219MA.M
 Quant Title : SVOA CALIBRATION

TIC Library : C:\DATABASE\NIST02.L
 TIC Integration Parameters: LSCINT.P

 Peak Number 17 Phenanthrene, 2,3,5-trimethyl- Concentration Rank 9

R.T.	EstConc	Area	Relative to ISTD	R.T.
19.50	3.09 ng/ul	375312	Chrysene-d12	21.20

Hit#	of	Tentative ID	MW	MolForm	CAS#	Qual
1	5	Phenanthrene, 2,3,5-trimethyl-	220	C17H16	003674-73-5	93
2		1,3-Pentadiene, 1,1-diphenyl-, (Z)-	220	C17H16	015295-31-5	74
3		Benzo[b]dihydropyran, 6-hydroxy-...	220	C14H20O2	050442-70-1	53
4		7-Nitro-6-methoxy-2,3-dimethylin...	220	C11H12N2O3	068289-71-4	50
5		1,4-Dimethoxy-6,7,8,9-tetrahydro...	220	C13H16O3	079381-09-2	50



Data Path : Z:\SVOASRV\HPCHEM1\BNA_M\DATA\BM040219\
 Data File : BM019728.D
 Acq On : 03 Apr 2019 13:52
 Operator : JU/SJ
 Sample : K2168-17
 Misc :
 ALS Vial : 36 Sample Multiplier: 1

Instrument :
 BNA_M
 ClientSampled :
 BF659

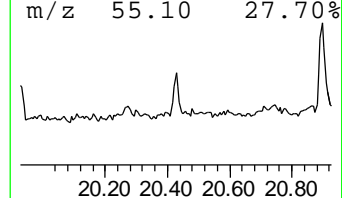
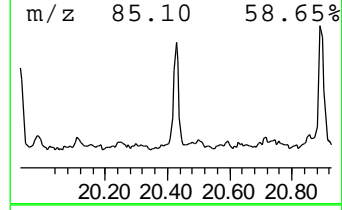
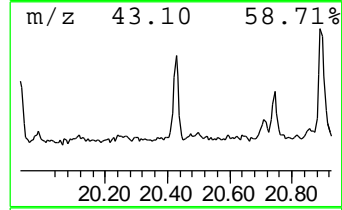
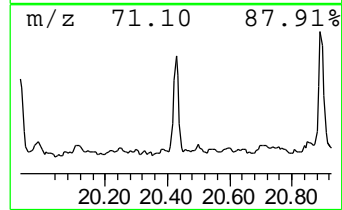
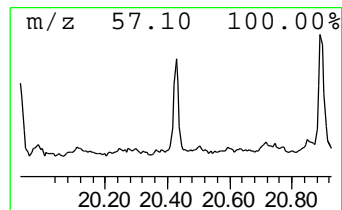
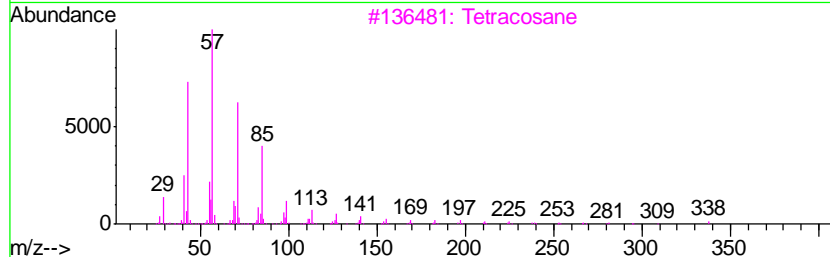
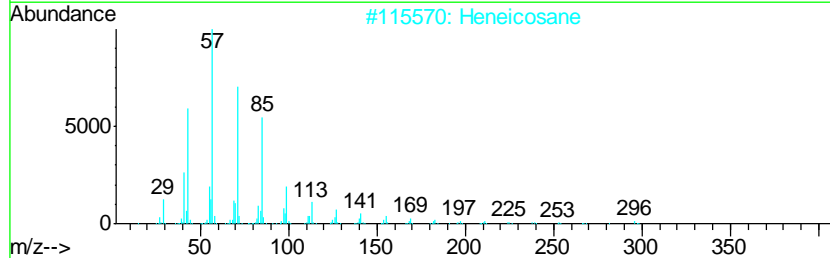
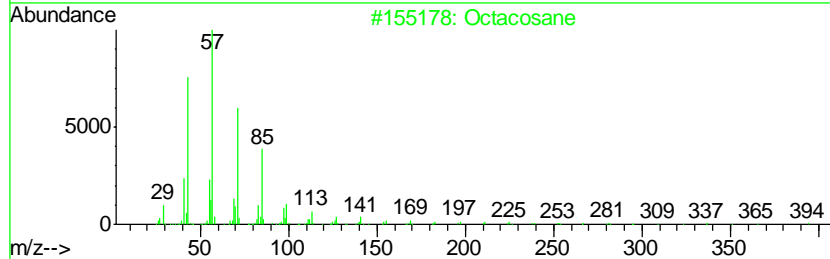
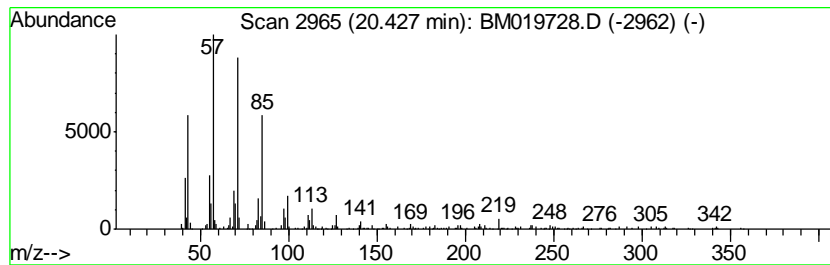
Quant Method : Z:\SVOASRV\HPCHEM1\BNA_M\METHODS\SOM-EPA-BM032219MA.M
 Quant Title : SVOA CALIBRATION

TIC Library : C:\DATABASE\NIST02.L
 TIC Integration Parameters: LSCINT.P

 Peak Number 18 (DEL) Alkane: Straight-Chai... Concentration Rank 16

R.T.	EstConc	Area	Relative to ISTD	R.T.
20.43	2.34 ng/ul	284434	Chrysene-d12	21.20

Hit#	of	Tentative ID	MW	MolForm	CAS#	Qual
1	5	Octacosane	394	C28H58	000630-02-4	91
2		Heneicosane	296	C21H44	000629-94-7	91
3		Tetracosane	338	C24H50	000646-31-1	91
4		Heptacosane	380	C27H56	000593-49-7	91
5		triacontane	422	C30H62	000638-68-6	90



Data Path : Z:\SVOASRV\HPCHEM1\BNA_M\DATA\BM040219\
 Data File : BM019728.D
 Acq On : 03 Apr 2019 13:52
 Operator : JU/SJ
 Sample : K2168-17
 Misc :
 ALS Vial : 36 Sample Multiplier: 1

Instrument :
 BNA_M
 ClientSampleID :
 BF659

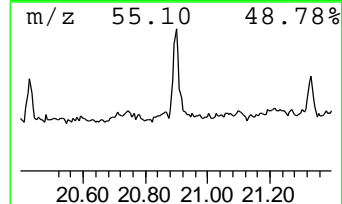
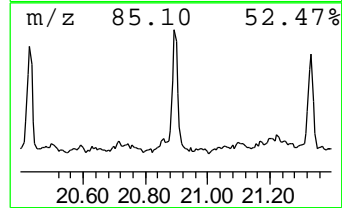
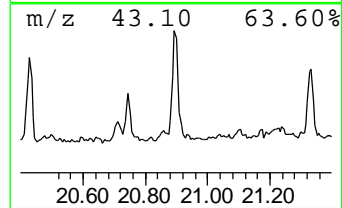
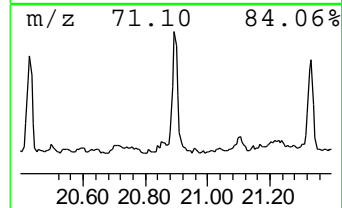
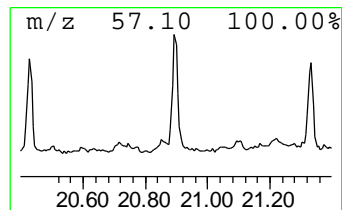
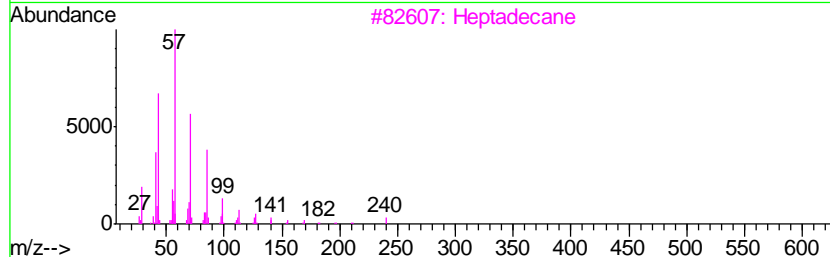
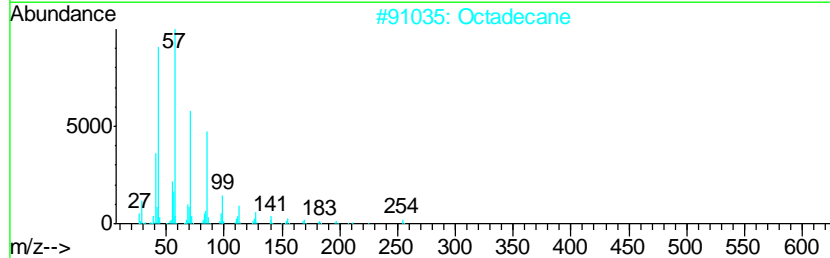
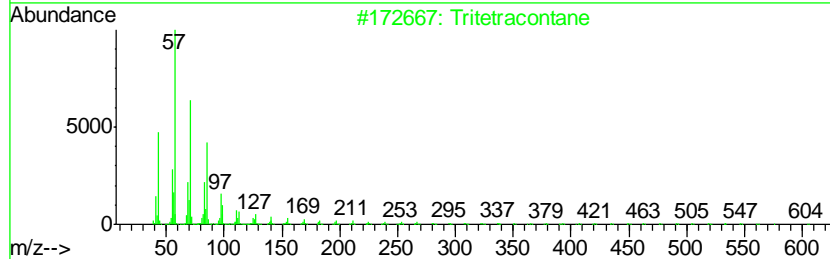
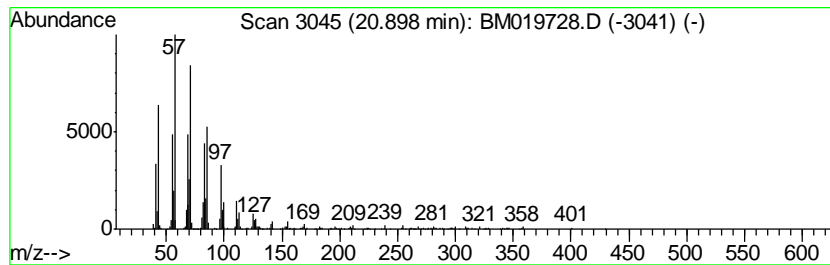
Quant Method : Z:\SVOASRV\HPCHEM1\BNA_M\METHODS\SOM-EPA-BM032219MA.M
 Quant Title : SVOA CALIBRATION

TIC Library : C:\DATABASE\NIST02.L
 TIC Integration Parameters: LSCINT.P

 Peak Number 19 (DEL) Alkane: Straight-Chai... Concentration Rank 8

R.T.	EstConc	Area	Relative to ISTD	R.T.
20.90	3.19 ng/ul	387677	Chrysene-d12	21.20

Hit#	of	Tentative ID	MW	MolForm	CAS#	Qual
1	5	Tritetracontane	605	C43H88	007098-21-7	83
2		Octadecane	254	C18H38	000593-45-3	64
3		Heptadecane	240	C17H36	000629-78-7	58
4		Hexadecane	226	C16H34	000544-76-3	58
5		Pentadecane	212	C15H32	000629-62-9	52



Data Path : Z:\SVOASRV\HPCHEM1\BNA_M\DATA\BM040219\
 Data File : BM019728.D
 Acq On : 03 Apr 2019 13:52
 Operator : JU/SJ
 Sample : K2168-17
 Misc :
 ALS Vial : 36 Sample Multiplier: 1

Instrument :
 BNA_M
 ClientSampled :
 BF659

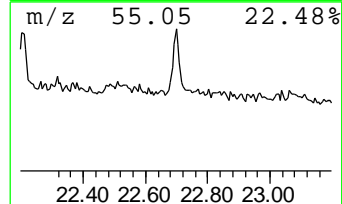
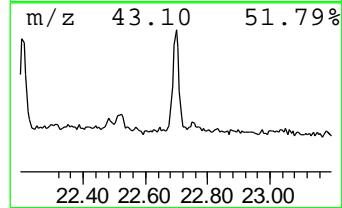
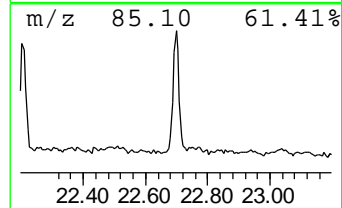
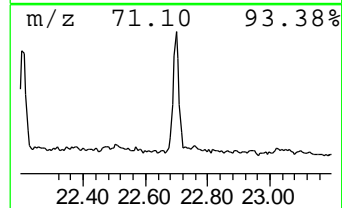
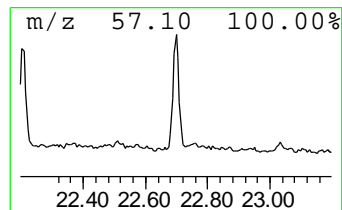
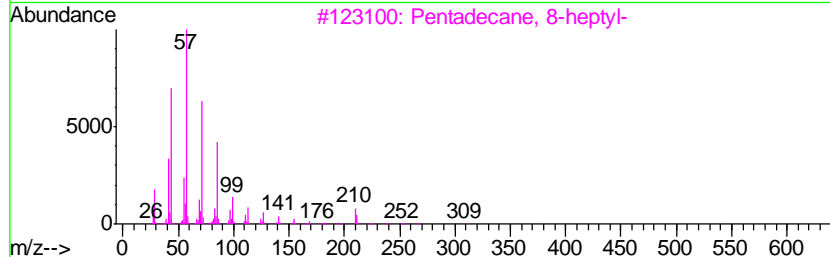
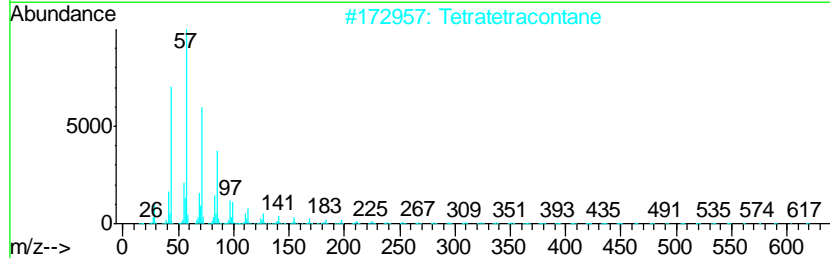
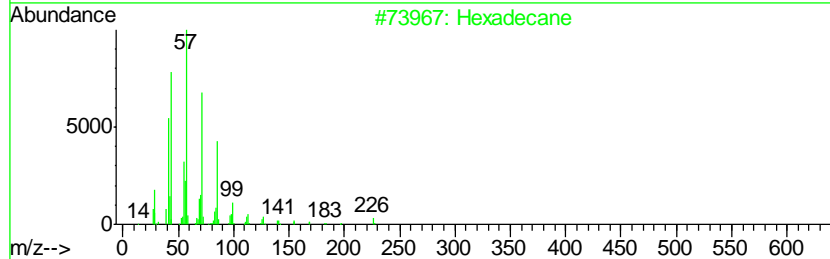
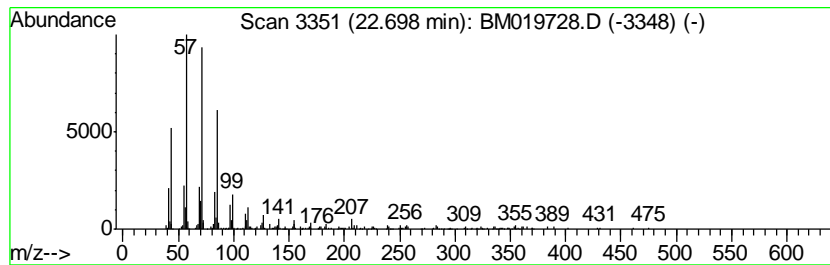
Quant Method : Z:\SVOASRV\HPCHEM1\BNA_M\METHODS\SOM-EPA-BM032219MA.M
 Quant Title : SVOA CALIBRATION

TIC Library : C:\DATABASE\NIST02.L
 TIC Integration Parameters: LSCINT.P

 Peak Number 20 (DEL) Alkane: Straight-Chai... Concentration Rank 6

R.T.	EstConc	Area	Relative to ISTD	R.T.
22.70	3.39 ng/ul	330486	Perylene-d12	23.40

Hit#	of	Tentative ID	MW	MolForm	CAS#	Qual
1	5	Hexadecane	226	C16H34	000544-76-3	83
2		Tetratetracontane	619	C44H90	007098-22-8	80
3		Pentadecane, 8-heptyl-	310	C22H46	071005-15-7	80
4		Nonacosane	408	C29H60	000630-03-5	80
5		Eicosane, 3-methyl-	296	C21H44	006418-46-8	76



Data Path : Z:\SVOASRV\HPCHEM1\BNA_M\DATA\BM040219\
 Data File : BM019728.D
 Acq On : 03 Apr 2019 13:52
 Operator : JU/SJ
 Sample : K2168-17
 Misc :
 ALS Vial : 36 Sample Multiplier: 1

Instrument :
 BNA_M
 ClientSampleId :
 BF659

Quant Method : Z:\SVOASRV\HPCHEM1\BNA_M\METHODS\SOM-EPA-BM032219MA.M
 Quant Title : SVOA CALIBRATION

TIC Library : C:\DATABASE\NIST02.L
 TIC Integration Parameters: LSCINT.P

TIC Top Hit name	RT	EstConc	Units	Response	--Internal Standard--			
					#	RT	Resp	Conc
Naphthalene, 1-me...	12.24	4.5	ng/ul	369712	2	10.35	1654940	20.0
Naphthalene, 2-et...	13.25	2.1	ng/ul	240343	3	14.23	2272710	20.0
Naphthalene, 1,7-...	13.38	4.8	ng/ul	546963	3	14.23	2272710	20.0
Naphthalene, 2,3-...	13.54	5.7	ng/ul	649668	3	14.23	2272710	20.0
Naphthalene, 2,6-...	13.59	2.0	ng/ul	231976	3	14.23	2272710	20.0
Naphthalene, 2,3,...	14.63	2.9	ng/ul	331371	3	14.23	2272710	20.0
Naphthalene, 1,6,...	14.70	2.9	ng/ul	324209	3	14.23	2272710	20.0
unknown-01	14.85	2.6	ng/ul	291575	3	14.23	2272710	20.0
Naphthalene, 1,4,...	14.90	2.0	ng/ul	231074	3	14.23	2272710	20.0
(DEL) Alkane: Str...	15.47	2.7	ng/ul	305212	3	14.23	2272710	20.0
1,4,5,8-Tetrameth...	15.95	2.5	ng/ul	326711	4	16.99	2581340	20.0
n-Hexadecanoic acid	17.88	4.9	ng/ul	627134	4	16.99	2581340	20.0
Anthracene, 2-met...	17.91	3.2	ng/ul	412467	4	16.99	2581340	20.0
Phenanthrene, 2,3...	18.62	2.0	ng/ul	262604	4	16.99	2581340	20.0
Phenanthrene, 3,6...	18.67	2.4	ng/ul	307927	4	16.99	2581340	20.0
Phenanthrene, 2,5...	18.79	5.3	ng/ul	686314	4	16.99	2581340	20.0
Phenanthrene, 2,3...	19.50	3.1	ng/ul	375312	5	21.20	2430400	20.0
(DEL) Alkane: Str...	20.43	2.3	ng/ul	284434	5	21.20	2430400	20.0
(DEL) Alkane: Str...	20.90	3.2	ng/ul	387677	5	21.20	2430400	20.0
(DEL) Alkane: Str...	22.70	3.4	ng/ul	330486	6	23.40	1951830	20.0