

Data Path : Z:\svoasrv\HPCHEM1\BNA\_M\Data\BM041124\  
 Data File : BM045177.D  
 Acq On : 12 Apr 2024 18:48  
 Operator : MA/JU  
 Sample : P2006-06  
 Misc :  
 ALS Vial : 40 Sample Multiplier: 1

Instrument :  
 BNA\_M  
 ClientSampleId :  
 MCOR65

Quant Time: Apr 12 22:36:45 2024  
 Quant Method : Z:\svoasrv\HPCHEM1\BNA\_M\Methods\SFAM-EPA-BM040524.MA.M  
 Quant Title : SVOA CALIBRATION  
 QLast Update : Thu Apr 11 18:54:49 2024  
 Response via : Initial Calibration

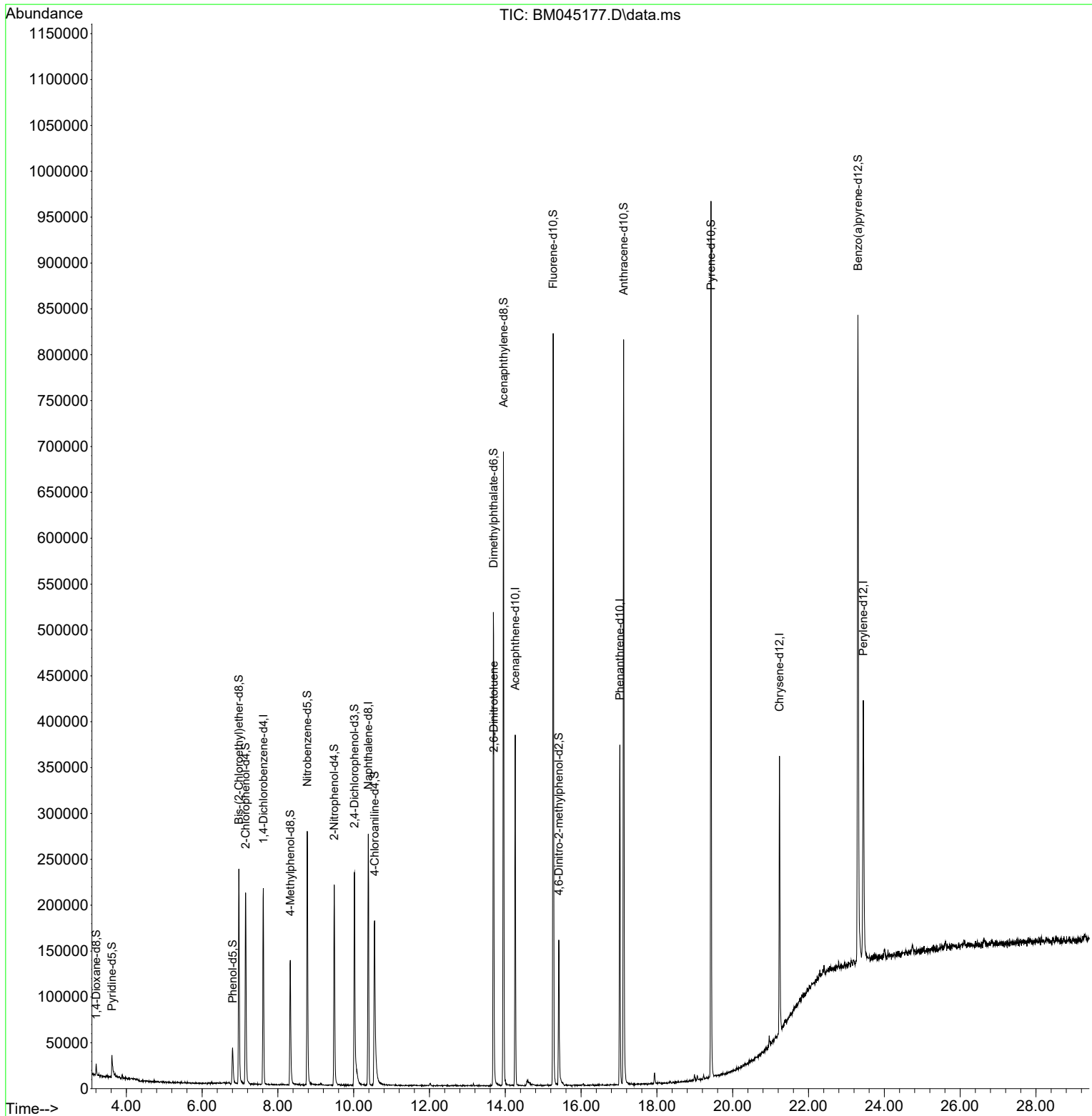
Compound	R.T.	QIon	Response	Conc	Units	Dev(Min)
Internal Standards						
1) 1,4-Dichlorobenzene-d4	7.616	152	58014	20.000	ng/ul	0.00
20) Naphthalene-d8	10.387	136	221435	20.000	ng/ul	0.00
38) Acenaphthene-d10	14.263	164	124380	20.000	ng/ul	0.00
64) Phenanthrene-d10	17.022	188	211715	20.000	ng/ul	0.00
79) Chrysene-d12	21.233	240	154802	20.000	ng/ul	0.00
88) Perylene-d12	23.445	264	201287	20.000	ng/ul	0.00
System Monitoring Compounds						
3) 1,4-Dioxane-d8	3.205	96	5560	3.579	ng/uL	0.00
4) Pyridine-d5	3.623	84	19087	4.518	ng/ul	0.02
7) Phenol-d5	6.805	99	26779	5.445	ng/ul	0.00
9) Bis-(2-Chloroethyl)eth...	6.969	67	103262	35.241	ng/ul	0.00
11) 2-Chlorophenol-d4	7.152	132	103821	26.945	ng/ul	0.00
15) 4-Methylphenol-d8	8.328	113	54389	14.128	ng/ul	0.00
21) Nitrobenzene-d5	8.775	128	67109	39.455	ng/ul	0.00
24) 2-Nitrophenol-d4	9.487	143	67041	37.343	ng/ul	0.00
28) 2,4-Dichlorophenol-d3	10.022	165	94853	28.817	ng/ul	0.00
31) 4-Chloroaniline-d4	10.551	131	132867	25.354	ng/ul	0.00
46) Dimethylphthalate-d6	13.687	166	364445	42.083	ng/ul	0.00
49) Acenaphthylene-d8	13.951	160	427228	41.758	ng/ul	0.00
54) 4-Nitrophenol-d4	14.557	143	503	0.278	ng/ul	0.06
60) Fluorene-d10	15.263	176	319845	41.426	ng/ul	0.00
65) 4,6-Dinitro-2-methylph...	15.410	200	34245	27.280	ng/ul	0.00
73) Anthracene-d10	17.122	188	461796	48.487	ng/ul	0.00
81) Pyrene-d10	19.427	212	473099	62.067	ng/ul	0.00
92) Benzo(a)pyrene-d12	23.304	264	485356	49.428	ng/ul	0.00
Target Compounds						
48) 2,6-Dinitrotoluene	13.698	165	1873	1.056	ng/ul#	44

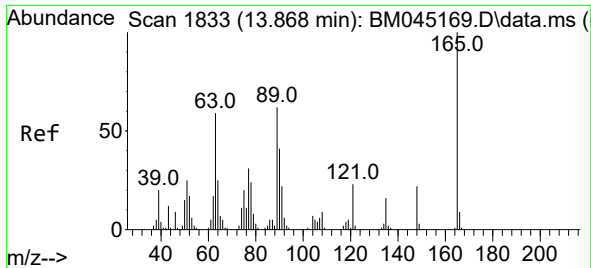
(#) = qualifier out of range (m) = manual integration (+) = signals summed

Data Path : Z:\svoasrv\HPCHEM1\BNA\_M\Data\BM041124\  
 Data File : BM045177.D  
 Acq On : 12 Apr 2024 18:48  
 Operator : MA/JU  
 Sample : P2006-06  
 Misc :  
 ALS Vial : 40 Sample Multiplier: 1

Instrument :  
 BNA\_M  
 ClientSampleId :  
 MCOR65

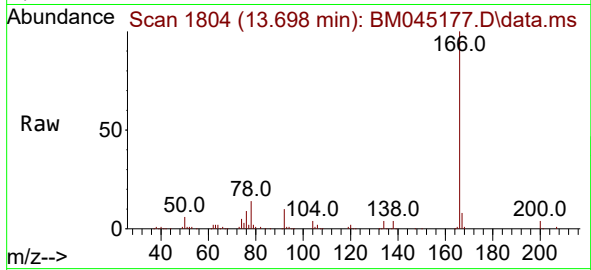
Quant Time: Apr 12 22:36:45 2024  
 Quant Method : Z:\svoasrv\HPCHEM1\BNA\_M\Methods\SFAM-EPA-BM040524.MA.M  
 Quant Title : SVOA CALIBRATION  
 QLast Update : Thu Apr 11 18:54:49 2024  
 Response via : Initial Calibration





#48  
 2,6-Dinitrotoluene  
 Concen: 1.056 ng/ul  
 RT: 13.698 min Scan# 11  
 Delta R.T. -0.170 min  
 Lab File: BM045177.D  
 Acq: 12 Apr 2024 18:48

Instrument :  
 BNA\_M  
 ClientSampleId :  
 MCOR65



Tgt Ion:165 Resp: 1873

Ion	Ratio	Lower	Upper
165	100		
89	0.0	45.0	67.4#
121	24.0	18.0	27.0

