

Data Path : Z:\svoasrv\HPCHEM1\BNA_M\Data\BM041124\
 Data File : BM045203.D
 Acq On : 13 Apr 2024 12:19
 Operator : MA/JU
 Sample : SSTDCC020
 Misc :
 ALS Vial : 68 Sample Multiplier: 1

Instrument :
 BNA_M
 ClientSampleId :
 SSTD020099

Quant Time: Apr 15 02:41:35 2024
 Quant Method : Z:\svoasrv\HPCHEM1\BNA_M\Methods\SFAM-EPA-BM040524.MA.M
 Quant Title : SVOA CALIBRATION
 QLast Update : Thu Apr 11 18:54:49 2024
 Response via : Initial Calibration

Compound	R.T.	QIon	Response	Conc	Units	Dev(Min)
Internal Standards						
1) 1,4-Dichlorobenzene-d4	7.610	152	50908	20.000	ng/ul	-0.01
20) Naphthalene-d8	10.381	136	208336	20.000	ng/ul	#-0.01
38) Acenaphthene-d10	14.257	164	121069	20.000	ng/ul	0.00
64) Phenanthrene-d10	17.015	188	227808	20.000	ng/ul	-0.01
79) Chrysene-d12	21.227	240	207622	20.000	ng/ul	0.00
88) Perylene-d12	23.444	264	249677	20.000	ng/ul	0.00
System Monitoring Compounds						
3) 1,4-Dioxane-d8	3.204	96	10313	7.565	ng/uL	0.00
4) Pyridine-d5	3.604	84	63476	17.122	ng/ul	0.00
7) Phenol-d5	6.793	99	77554	17.970	ng/ul	0.00
9) Bis-(2-Chloroethyl)eth...	6.969	67	50833	19.770	ng/ul	0.00
11) 2-Chlorophenol-d4	7.145	132	67963	20.101	ng/ul	0.00
15) 4-Methylphenol-d8	8.322	113	62364	18.461	ng/ul	0.00
21) Nitrobenzene-d5	8.775	128	32467	20.288	ng/ul	0.00
24) 2-Nitrophenol-d4	9.481	143	33964	20.108	ng/ul	-0.01
28) 2,4-Dichlorophenol-d3	10.010	165	62644	20.228	ng/ul	-0.01
31) 4-Chloroaniline-d4	10.539	131	88381	17.925	ng/ul	-0.01
46) Dimethylphthalate-d6	13.680	166	168812	20.026	ng/ul	-0.01
49) Acenaphthylene-d8	13.945	160	201870	20.271	ng/ul	-0.01
54) 4-Nitrophenol-d4	14.498	143	20024	11.382	ng/ul	0.00
60) Fluorene-d10	15.257	176	147142	19.579	ng/ul	-0.01
65) 4,6-Dinitro-2-methylph...	15.404	200	21439	15.872	ng/ul	0.00
73) Anthracene-d10	17.115	188	209054	20.399	ng/ul	-0.01
81) Pyrene-d10	19.421	212	224358	21.946	ng/ul	-0.01
92) Benzo(a)pyrene-d12	23.297	264	248862	20.432	ng/ul	-0.01
Target Compounds						
2) 1,4-Dioxane	3.234	88	10868	7.633	ng/uL	91
5) Pyridine	3.622	79	65482	16.670	ng/ul	97
6) Benzaldehyde	6.781	77	50525	25.255	ng/ul	97
8) Phenol	6.816	94	82264	18.407	ng/ul	98
10) Bis(2-Chloroethyl)ether	7.057	93	68633	19.677	ng/ul	96
12) 2-Chlorophenol	7.175	128	69313	19.537	ng/ul	96
13) 2-Methylphenol	8.051	108	61117	18.527	ng/ul	99
14) 2,2'-oxybis(1-Chloropr...	8.134	45	84482	20.308	ng/ul	99
16) Acetophenone	8.439	105	104852	19.091	ng/ul	96
17) N-Nitroso-di-n-propyla...	8.422	70	51091	19.702	ng/ul#	89
18) 4-Methylphenol	8.381	108	66735	18.769	ng/ul	100
19) Hexachloroethane	8.657	117	33135	21.234	ng/ul	99
22) Nitrobenzene	8.816	77	82117	20.915	ng/ul	97
23) Isophorone	9.334	82	144456	20.026	ng/ul	98
25) 2-Nitrophenol	9.516	139	37958	20.247	ng/ul	93
26) 2,4-Dimethylphenol	9.575	107	73633	20.372	ng/ul	98
27) Bis(2-Chloroethoxy)met...	9.816	93	90398	21.139	ng/ul	98
29) 2,4-Dichlorophenol	10.039	162	59945	19.159	ng/ul	96
30) Naphthalene	10.428	128	226382	20.527	ng/ul	100
32) 4-Chloroaniline	10.563	127	86841	18.101	ng/ul	99
33) Hexachlorobutadiene	10.692	225	41814	21.494	ng/ul	92
34) Caprolactam	11.363	113	15149	14.341	ng/ul	98
35) 4-Chloro-3-methylphenol	11.692	107	59465	19.119	ng/ul	95
36) 2-Methylnaphthalene	12.051	142	144093	20.010	ng/ul	99

Data Path : Z:\svoasrv\HPCHEM1\BNA_M\Data\BM041124\
 Data File : BM045203.D
 Acq On : 13 Apr 2024 12:19
 Operator : MA/JU
 Sample : SSTDCCC020
 Misc :
 ALS Vial : 68 Sample Multiplier: 1

Instrument :
 BNA_M
 ClientSampleId :
 SSTD020099

Quant Time: Apr 15 02:41:35 2024
 Quant Method : Z:\svoasrv\HPCHEM1\BNA_M\Methods\SFAM-EPA-BM040524.MA.M
 Quant Title : SVOA CALIBRATION
 QLast Update : Thu Apr 11 18:54:49 2024
 Response via : Initial Calibration

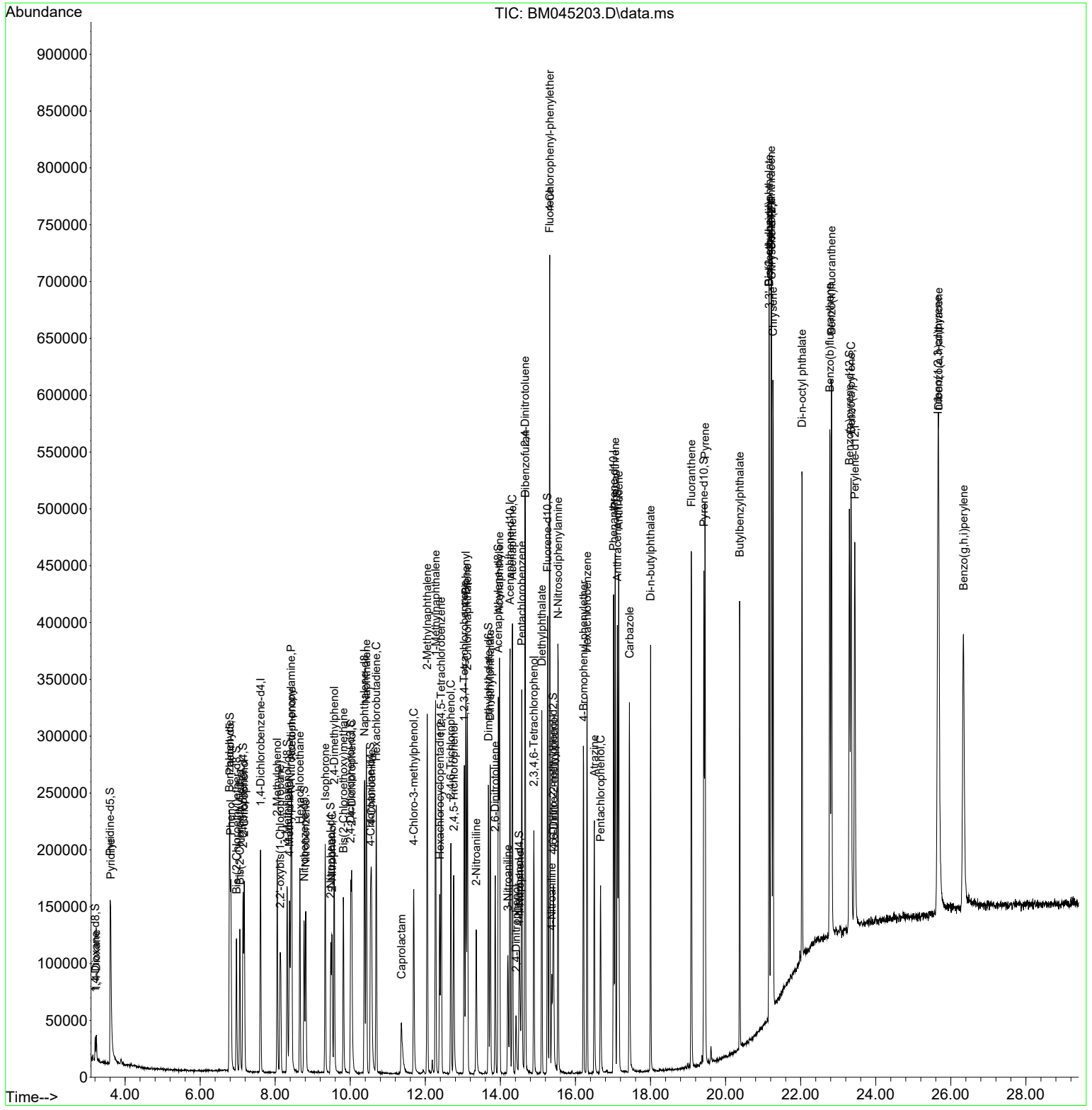
Compound	R.T.	QIon	Response	Conc	Units	Dev(Min)
37) 1-Methylnaphthalene	12.274	142	147609	20.256	ng/ul	98
39) 1,2,4,5-Tetrachloroben...	12.422	216	73214	22.112	ng/ul	98
40) Hexachlorocyclopentadiene	12.386	237	41227	20.569	ng/ul	91
41) 2,4,6-Trichlorophenol	12.680	196	45635	21.129	ng/ul	93
42) 2,4,5-Trichlorophenol	12.757	196	49841	20.943	ng/ul	94
43) 1,1'-Biphenyl	13.080	154	187980	21.988	ng/ul	97
44) 2-Chloronaphthalene	13.121	162	149546	21.531	ng/ul	99
45) 2-Nitroaniline	13.357	65	37317	19.463	ng/ul	95
47) Dimethylphthalate	13.727	163	176709	20.056	ng/ul	99
48) 2,6-Dinitrotoluene	13.863	165	33182	19.214	ng/ul	91
50) Acenaphthylene	13.974	152	243327	20.921	ng/ul	99
51) 3-Nitroaniline	14.198	138	31957	16.964	ng/ul	97
52) Acenaphthene	14.321	153	161529	20.813	ng/ul	97
53) 2,4-Dinitrophenol	14.416	184	11611	11.309	ng/ul	89
55) 4-Nitrophenol	14.516	109	17697	11.438	ng/ul	93
56) Dibenzofuran	14.663	168	211739	19.937	ng/ul	98
57) 2,4-Dinitrotoluene	14.657	165	46564	18.013	ng/ul#	91
58) 2,3,4,6-Tetrachlorophenol	14.892	232	38142	18.727	ng/ul#	93
59) Diethylphthalate	15.104	149	172648	19.207	ng/ul	97
61) Fluorene	15.310	166	168486	18.823	ng/ul	99
62) 4-Chlorophenyl-phenyle...	15.315	204	79846	19.031	ng/ul	98
63) 4-Nitroaniline	15.368	138	27536	16.078	ng/ul	87
66) 4,6-Dinitro-2-methylph...	15.415	198	23564	16.290	ng/ul	100
67) N-Nitrosodiphenylamine	15.539	169	133658	21.749	ng/ul	99
68) 4-Bromophenyl-phenylether	16.215	248	50589	22.801	ng/ul	94
69) Hexachlorobenzene	16.310	284	60624	21.006	ng/ul	94
70) Atrazine	16.504	200	42726	18.901	ng/ul	97
71) Pentachlorophenol	16.668	266	28478	16.244	ng/ul	97
72) Phenanthrene	17.057	178	253221	20.656	ng/ul	98
74) Anthracene	17.151	178	261896	20.884	ng/ul	98
75) 1,2,3,4-Tetrachloroben...	13.039	216	71504	24.903	ng/uL	98
76) Pentachlorobenzene	14.568	250	74214	24.293	ng/uL	97
77) Carbazole	17.439	167	221522	18.320	ng/ul	99
78) Di-n-butylphthalate	18.004	149	271554	19.914	ng/ul	100
80) Fluoranthene	19.086	202	268893	22.300	ng/ul	99
82) Pyrene	19.451	202	288430	22.166	ng/ul	98
83) Butylbenzylphthalate	20.374	149	107509	19.720	ng/ul	91
84) 3,3'-Dichlorobenzidine	21.162	252	77625	16.815	ng/ul	99
85) Benzo(a)anthracene	21.209	228	282444	20.049	ng/ul	98
86) Bis(2-ethylhexyl)phtha...	21.156	149	161252	18.923	ng/ul	97
87) Chrysene	21.262	228	263181	20.040	ng/ul	98
89) Di-n-octyl phthalate	22.033	149	273030	17.380	ng/ul	100
90) Benzo(b)fluoranthene	22.780	252	291873	20.057	ng/ul	98
91) Benzo(k)fluoranthene	22.821	252	303556	20.725	ng/ul	99
93) Benzo(a)pyrene	23.344	252	291651	20.593	ng/ul	98
94) Indeno(1,2,3-cd)pyrene	25.656	276	365511	19.924	ng/ul	98
95) Dibenzo(a,h)anthracene	25.674	278	307903	20.074	ng/ul	98
96) Benzo(g,h,i)perylene	26.338	276	312798	21.613	ng/ul	99

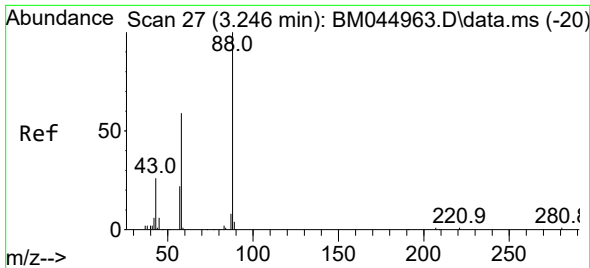
(#) = qualifier out of range (m) = manual integration (+) = signals summed

Data Path : Z:\svoasrv\HPCHEM1\BNA_M\Data\BM041124\
 Data File : BM045203.D
 Acq On : 13 Apr 2024 12:19
 Operator : MA/JU
 Sample : SSTDCCC020
 Misc :
 ALS Vial : 68 Sample Multiplier: 1

Instrument :
 BNA_M
 ClientSampleId :
 SSTD020099

Quant Time: Apr 15 02:41:35 2024
 Quant Method : Z:\svoasrv\HPCHEM1\BNA_M\Methods\SFAM-EPA-BM040524.MA.M
 Quant Title : SVOA CALIBRATION
 QLast Update : Thu Apr 11 18:54:49 2024
 Response via : Initial Calibration



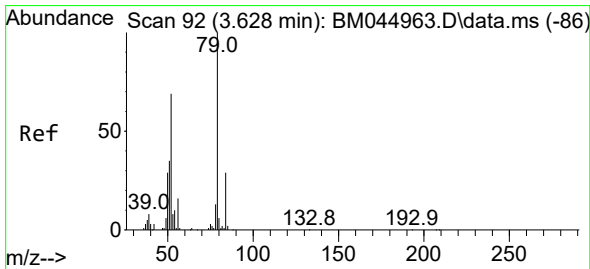
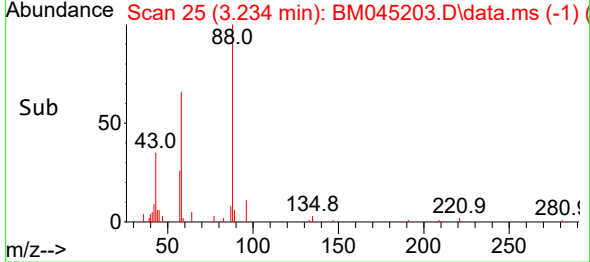
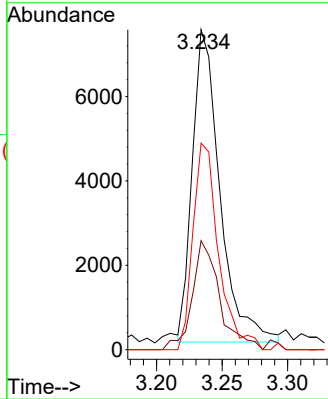
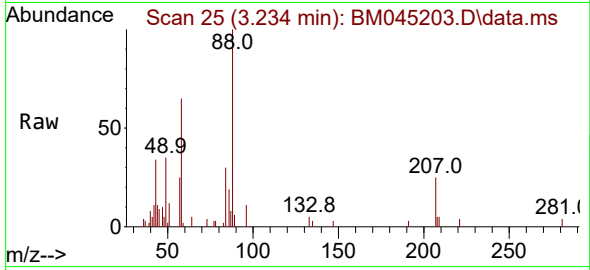


#2
 1,4-Dioxane
 Concen: 7.633 ng/uL
 RT: 3.234 min Scan# 21
 Delta R.T. -0.006 min
 Lab File: BM045203.D
 Acq: 13 Apr 2024 12:19

Instrument :
 BNA_M
 ClientSampleId :
 SSTD020099

Tgt Ion: 88 Resp: 10868

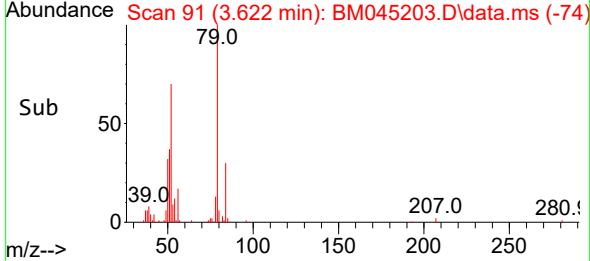
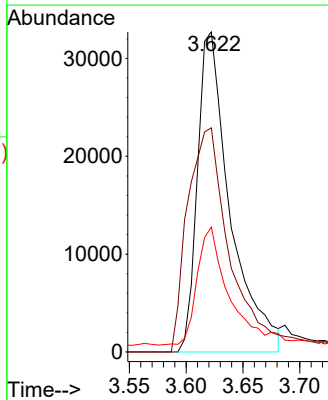
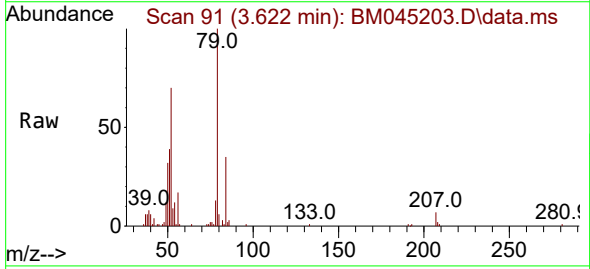
Ion	Ratio	Lower	Upper
88	100		
43	34.1	24.0	36.0
58	64.5	45.4	68.2

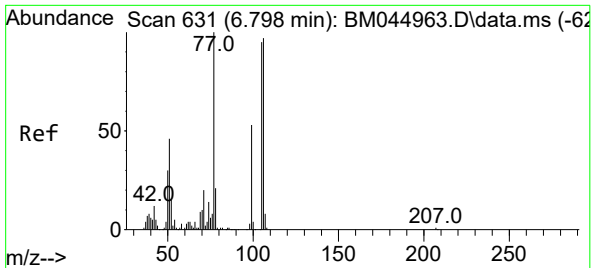


#5
 Pyridine
 Concen: 16.670 ng/uL
 RT: 3.622 min Scan# 91
 Delta R.T. 0.000 min
 Lab File: BM045203.D
 Acq: 13 Apr 2024 12:19

Tgt Ion: 79 Resp: 65482

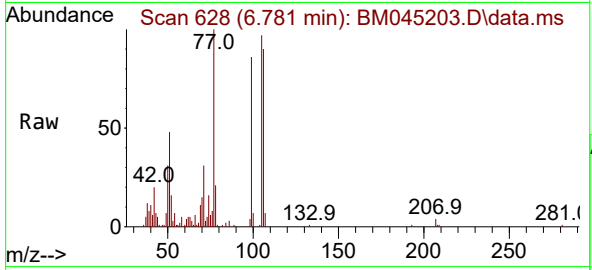
Ion	Ratio	Lower	Upper
79	100		
52	70.0	56.0	84.0
51	39.0	27.6	41.4



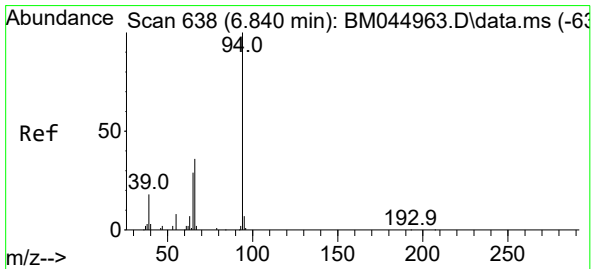
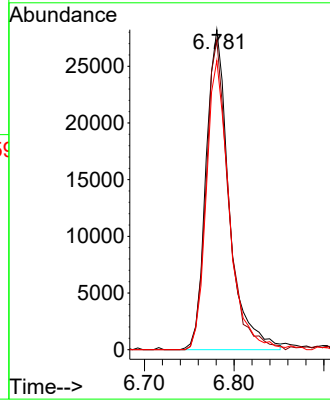
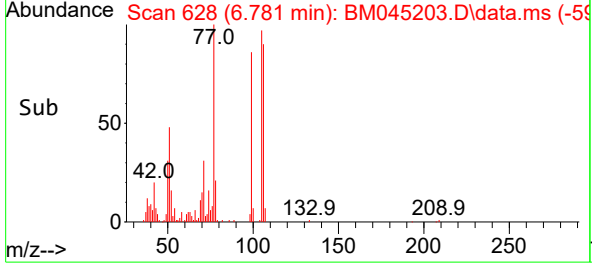


#6
Benzaldehyde
Concen: 25.255 ng/u1
RT: 6.781 min Scan# 61
Delta R.T. -0.006 min
Lab File: BM045203.D
Acq: 13 Apr 2024 12:19

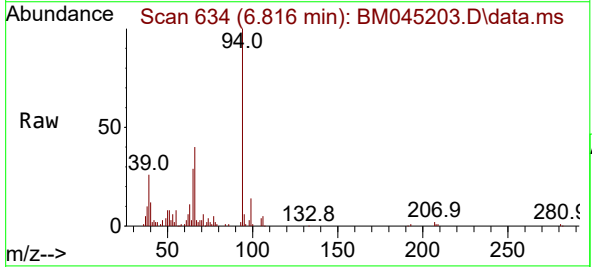
Instrument :
BNA_M
ClientSampleId :
SSTD020099



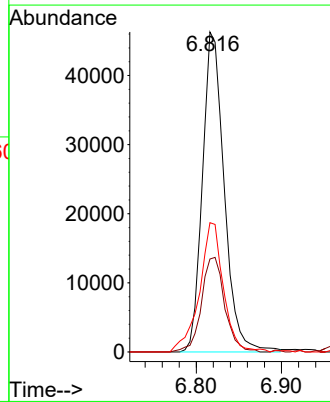
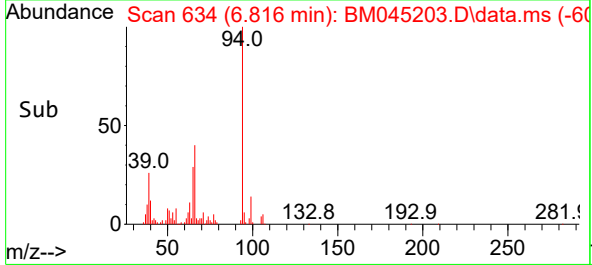
Tgt Ion: 77 Resp: 50525
Ion Ratio Lower Upper
77 100
105 96.7 75.8 113.6
106 90.3 74.6 112.0

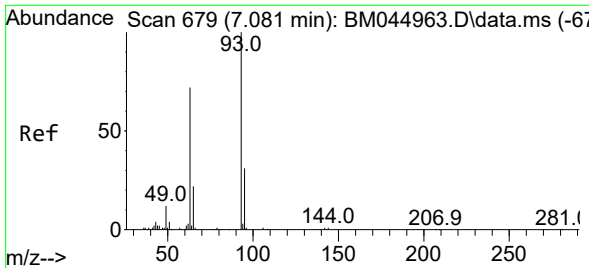


#8
Phenol
Concen: 18.407 ng/u1
RT: 6.816 min Scan# 634
Delta R.T. -0.012 min
Lab File: BM045203.D
Acq: 13 Apr 2024 12:19



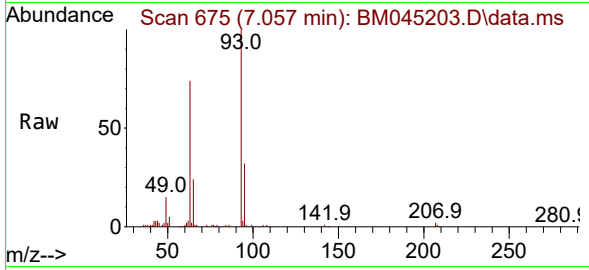
Tgt Ion: 94 Resp: 82264
Ion Ratio Lower Upper
94 100
65 29.1 21.7 32.5
66 40.4 31.9 47.9





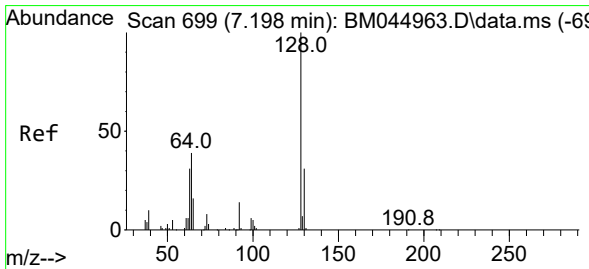
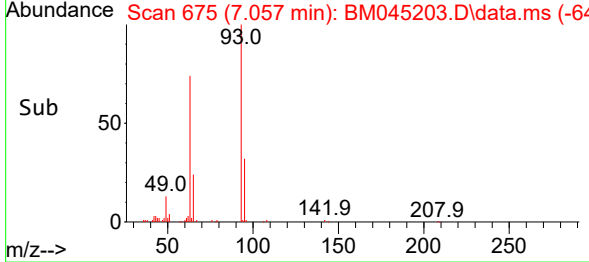
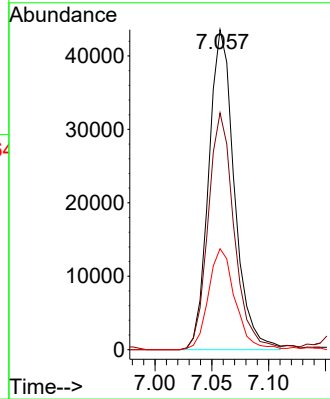
#10
 Bis(2-Chloroethyl)ether
 Concen: 19.677 ng/ul
 RT: 7.057 min Scan# 61
 Delta R.T. -0.012 min
 Lab File: BM045203.D
 Acq: 13 Apr 2024 12:19

Instrument :
 BNA_M
 ClientSampleId :
 SSTD020099



Tgt Ion: 93 Resp: 68633

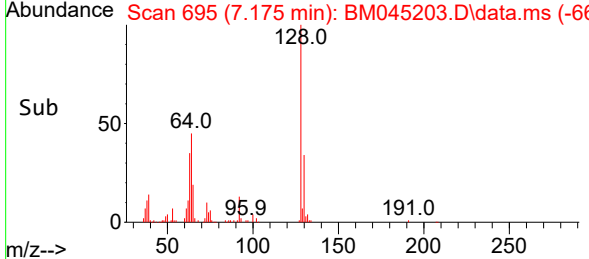
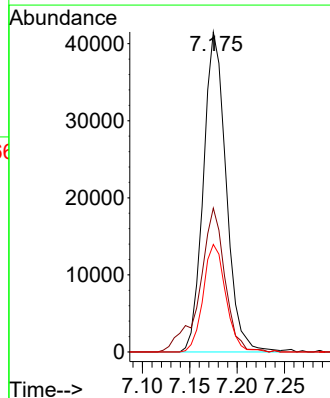
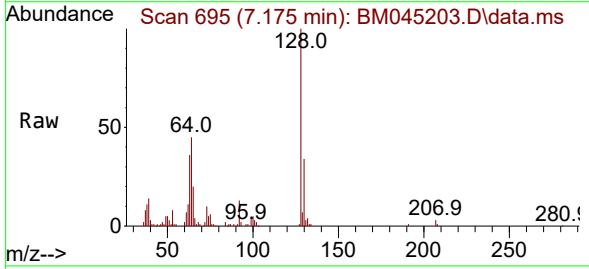
Ion	Ratio	Lower	Upper
93	100		
63	74.0	61.3	91.9
95	31.5	27.6	41.4

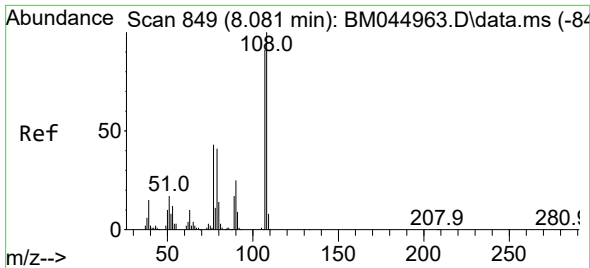


#12
 2-Chlorophenol
 Concen: 19.537 ng/ul
 RT: 7.175 min Scan# 695
 Delta R.T. -0.012 min
 Lab File: BM045203.D
 Acq: 13 Apr 2024 12:19

Tgt Ion: 128 Resp: 69313

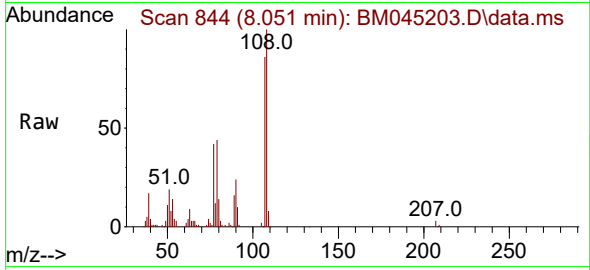
Ion	Ratio	Lower	Upper
128	100		
64	45.0	33.3	49.9
130	33.6	26.2	39.4



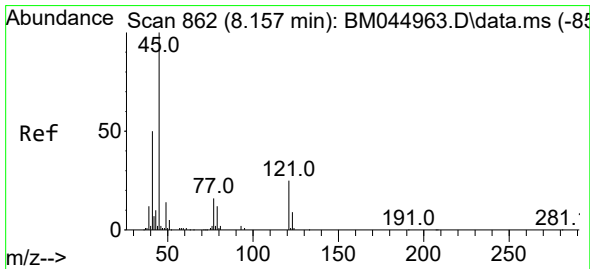
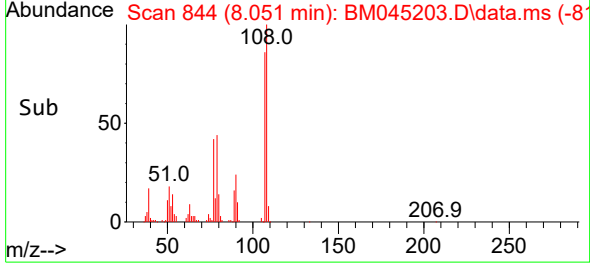
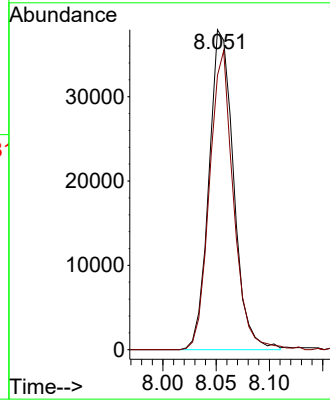


#13
 2-Methylphenol
 Concen: 18.527 ng/ul
 RT: 8.051 min Scan# 844
 Delta R.T. -0.012 min
 Lab File: BM045203.D
 Acq: 13 Apr 2024 12:19

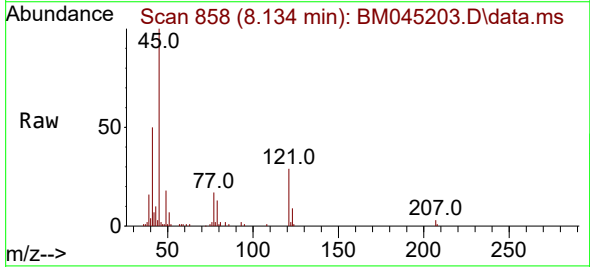
Instrument : BNA_M
 ClientSampleId : SSTD020099



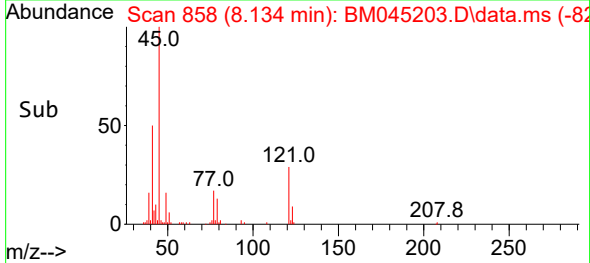
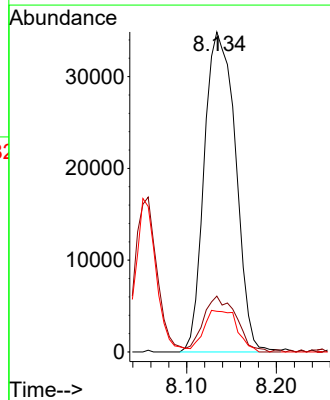
Tgt Ion: 108 Resp: 61117
 Ion Ratio Lower Upper
 108 100
 107 85.7 69.1 103.7

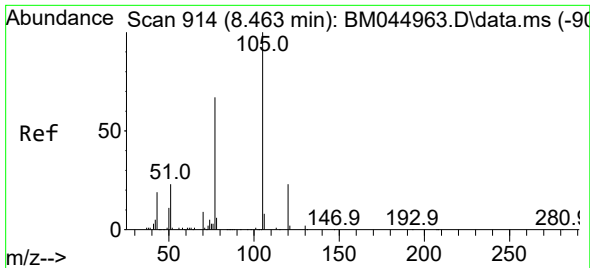


#14
 2,2'-oxybis(1-Chloropropane)
 Concen: 20.308 ng/ul
 RT: 8.134 min Scan# 858
 Delta R.T. -0.006 min
 Lab File: BM045203.D
 Acq: 13 Apr 2024 12:19



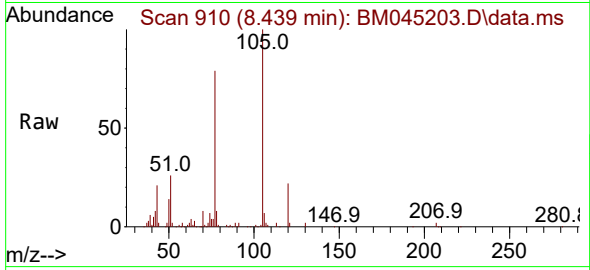
Tgt Ion: 45 Resp: 84482
 Ion Ratio Lower Upper
 45 100
 77 17.5 13.4 20.0
 79 12.7 10.1 15.1



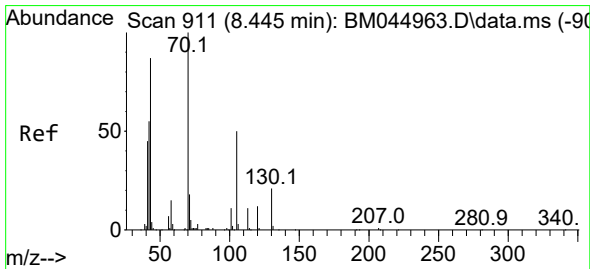
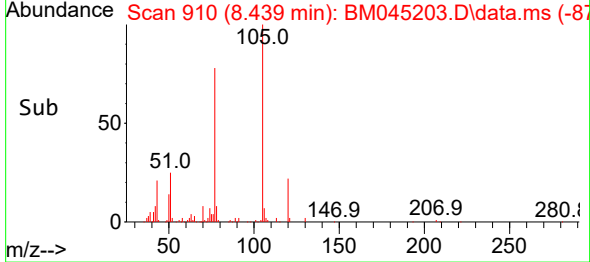
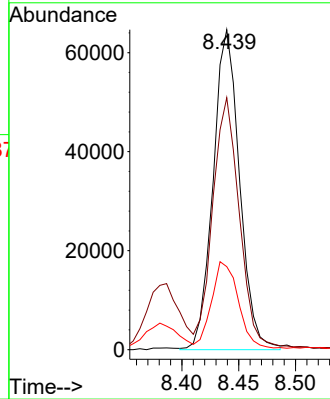


#16
 Acetophenone
 Concen: 19.091 ng/ul
 RT: 8.439 min Scan# 910
 Delta R.T. -0.006 min
 Lab File: BM045203.D
 Acq: 13 Apr 2024 12:19

Instrument :
 BNA_M
 ClientSampleId :
 SSTD020099

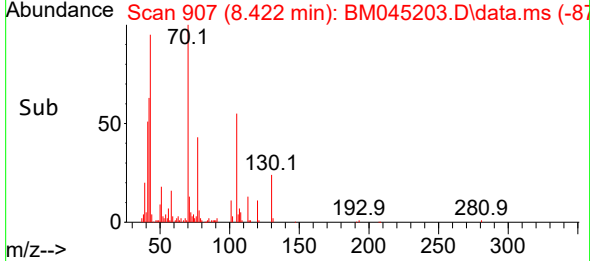
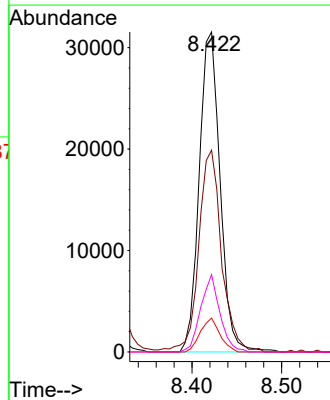
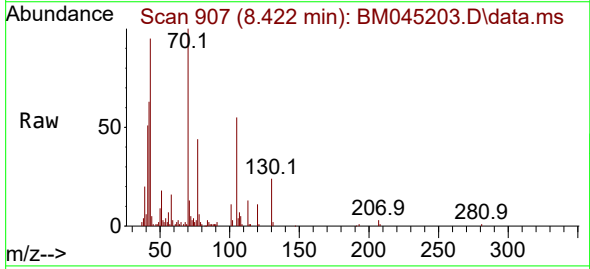


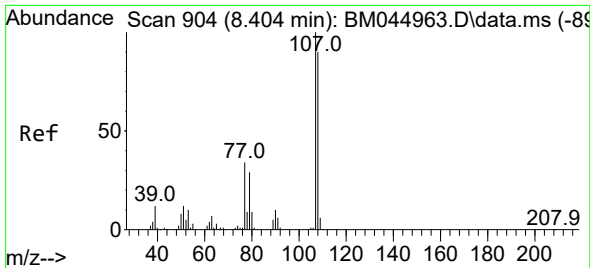
Tgt Ion:105 Resp: 104852
 Ion Ratio Lower Upper
 105 100
 77 78.7 65.8 98.6
 51 25.9 21.9 32.9



#17
 N-Nitroso-di-n-propylamine
 Concen: 19.702 ng/ul
 RT: 8.422 min Scan# 907
 Delta R.T. -0.006 min
 Lab File: BM045203.D
 Acq: 13 Apr 2024 12:19

Tgt Ion: 70 Resp: 51091
 Ion Ratio Lower Upper
 70 100
 42 63.0 43.2 64.8
 101 10.6 6.4 9.6#
 130 24.2 16.2 24.2





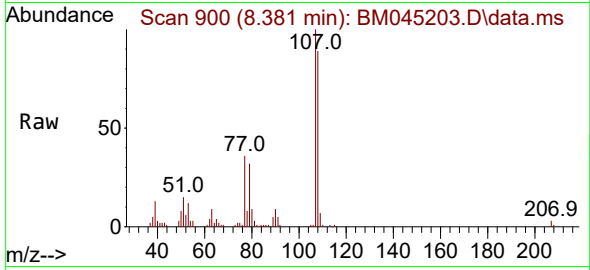
#18
 4-Methylphenol
 Concen: 18.769 ng/ul
 RT: 8.381 min Scan# 904
 Delta R.T. -0.012 min
 Lab File: BM045203.D
 Acq: 13 Apr 2024 12:19

Instrument :

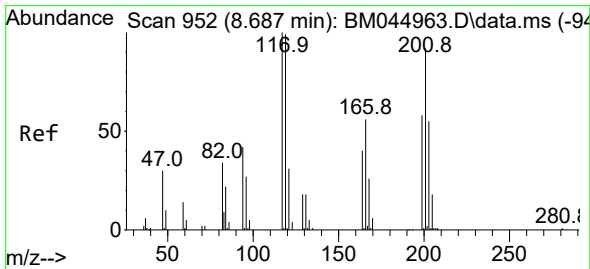
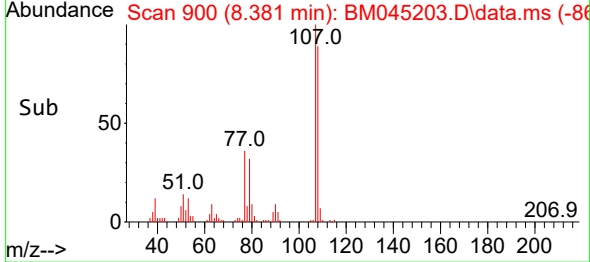
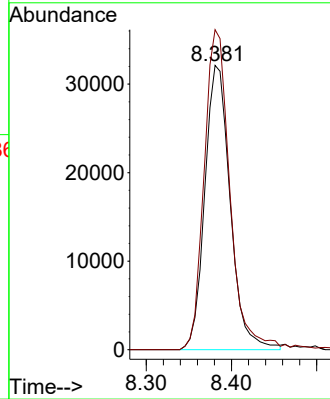
BNA_M

ClientSampleId :

SSTD020099

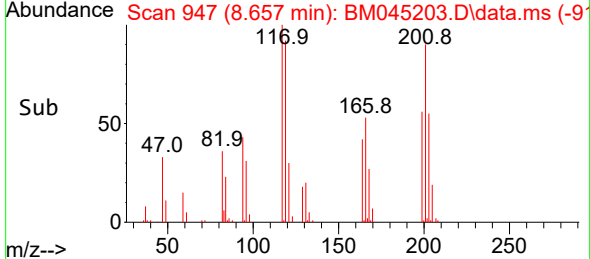
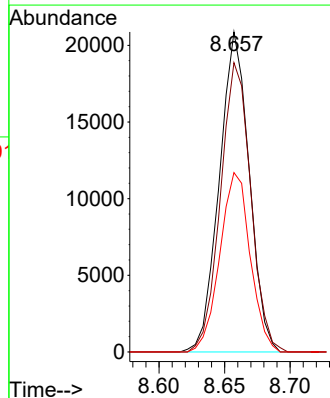
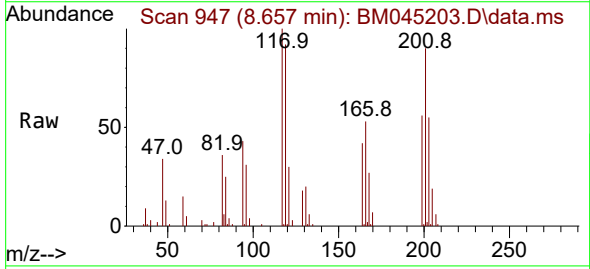


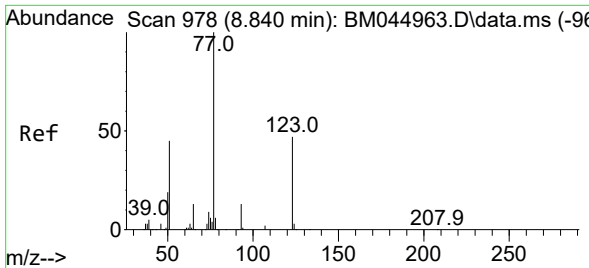
Tgt Ion:108 Resp: 66735
 Ion Ratio Lower Upper
 108 100
 107 112.6 90.0 135.0



#19
 Hexachloroethane
 Concen: 21.234 ng/ul
 RT: 8.657 min Scan# 947
 Delta R.T. -0.012 min
 Lab File: BM045203.D
 Acq: 13 Apr 2024 12:19

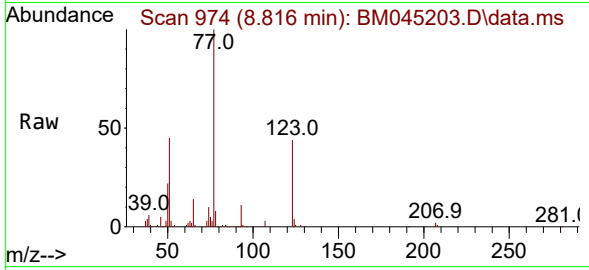
Tgt Ion:117 Resp: 33135
 Ion Ratio Lower Upper
 117 100
 201 90.4 73.0 109.4
 199 56.0 44.4 66.6





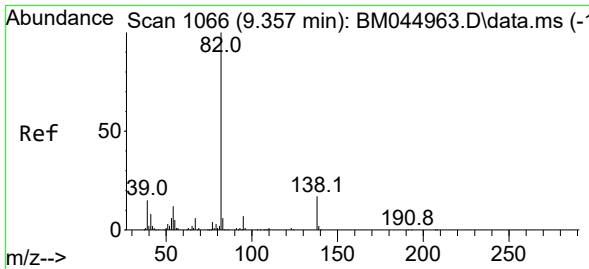
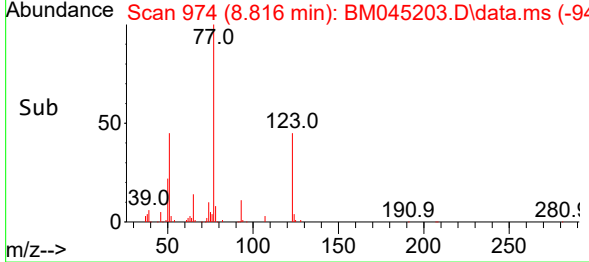
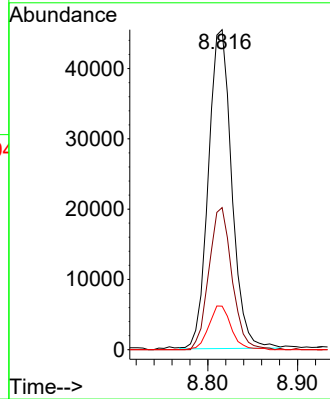
#22
 Nitrobenzene
 Concen: 20.915 ng/u1
 RT: 8.816 min Scan# 91
 Delta R.T. -0.006 min
 Lab File: BM045203.D
 Acq: 13 Apr 2024 12:19

Instrument :
 BNA_M
 ClientSampleId :
 SSTD020099



Tgt Ion: 77 Resp: 82117

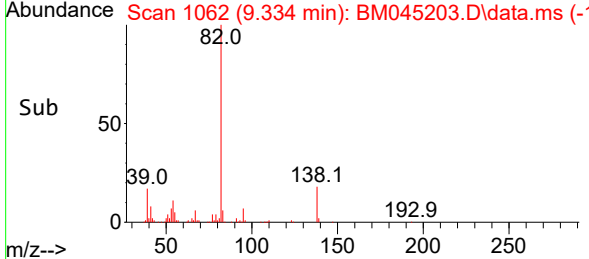
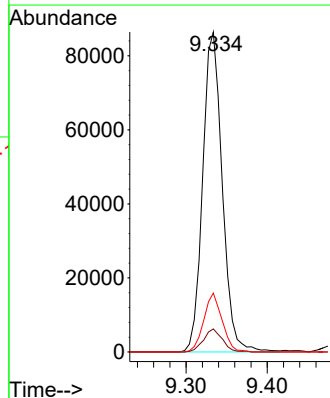
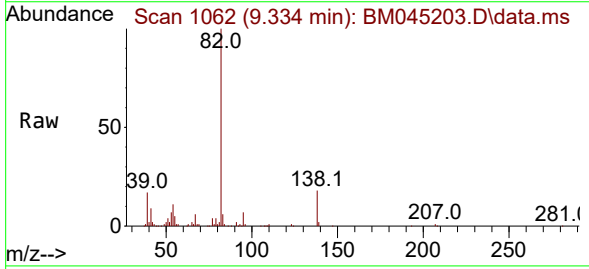
Ion	Ratio	Lower	Upper
77	100		
123	44.4	37.4	56.2
65	13.6	10.7	16.1

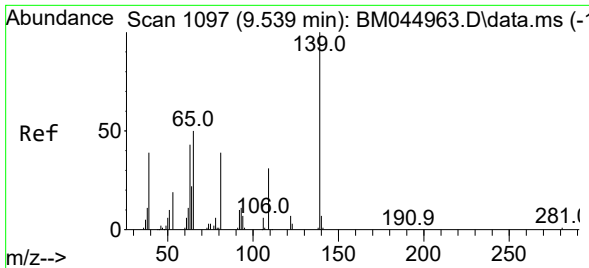


#23
 Isophorone
 Concen: 20.026 ng/u1
 RT: 9.334 min Scan# 1062
 Delta R.T. -0.012 min
 Lab File: BM045203.D
 Acq: 13 Apr 2024 12:19

Tgt Ion: 82 Resp: 144456

Ion	Ratio	Lower	Upper
82	100		
95	7.2	5.1	7.7
138	18.4	14.2	21.4



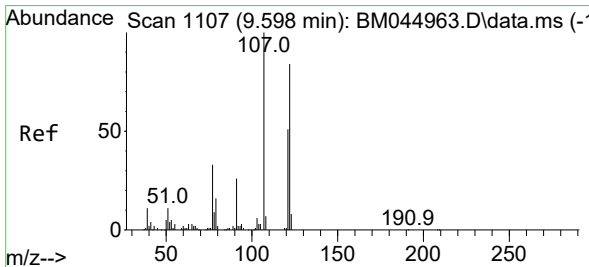
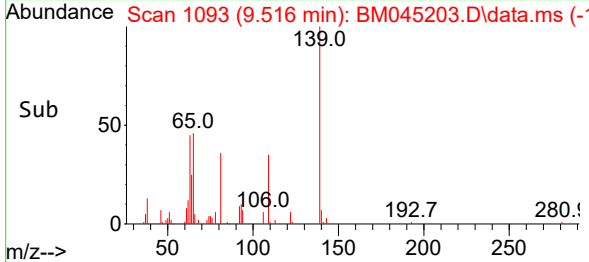
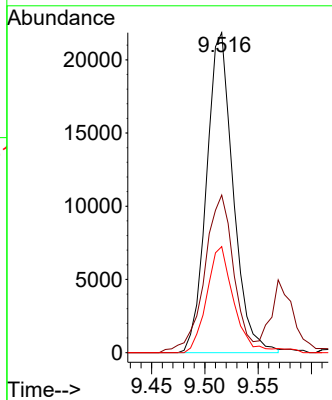
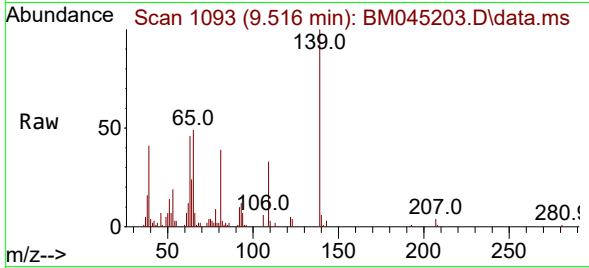


#25
 2-Nitrophenol
 Concen: 20.247 ng/ul
 RT: 9.516 min Scan# 1103
 Delta R.T. -0.006 min
 Lab File: BM045203.D
 Acq: 13 Apr 2024 12:19

Instrument : BNA_M
 ClientSampleId : SSTD020099

Tgt Ion:139 Resp: 37958

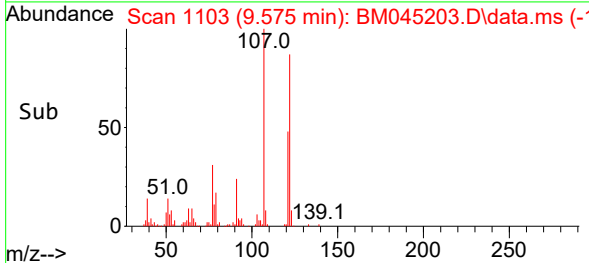
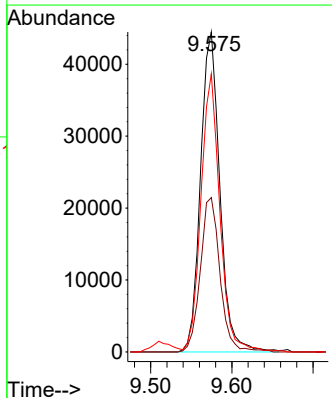
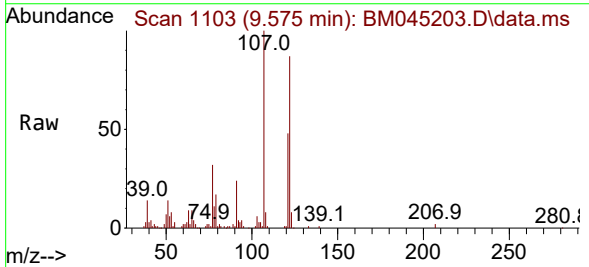
Ion	Ratio	Lower	Upper
139	100		
65	49.2	34.9	52.3
109	33.1	24.4	36.6

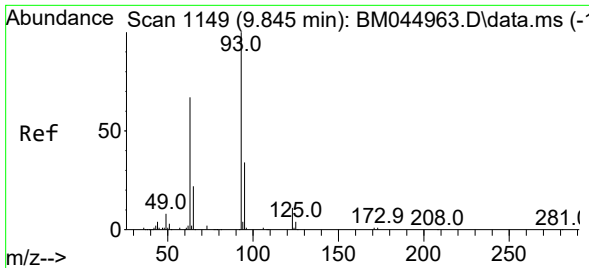


#26
 2,4-Dimethylphenol
 Concen: 20.372 ng/ul
 RT: 9.575 min Scan# 1103
 Delta R.T. -0.012 min
 Lab File: BM045203.D
 Acq: 13 Apr 2024 12:19

Tgt Ion:107 Resp: 73633

Ion	Ratio	Lower	Upper
107	100		
121	48.2	41.1	61.7
122	86.9	69.1	103.7





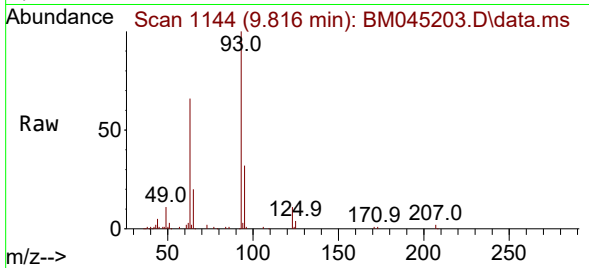
#27
 Bis(2-Chloroethoxy)methane
 Concen: 21.139 ng/ul
 RT: 9.816 min Scan# 1144
 Delta R.T. -0.012 min
 Lab File: BM045203.D
 Acq: 13 Apr 2024 12:19

Instrument :

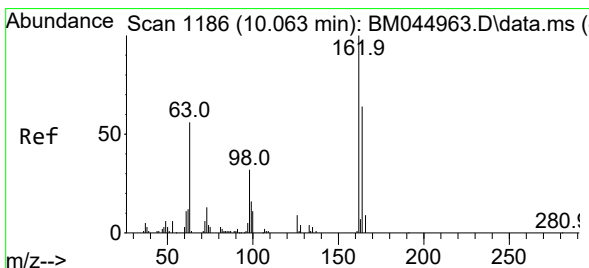
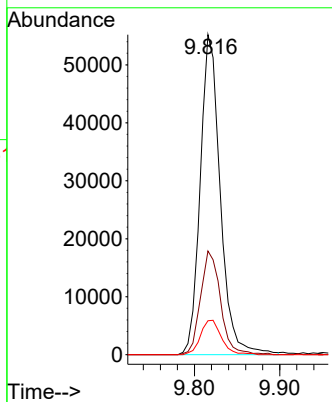
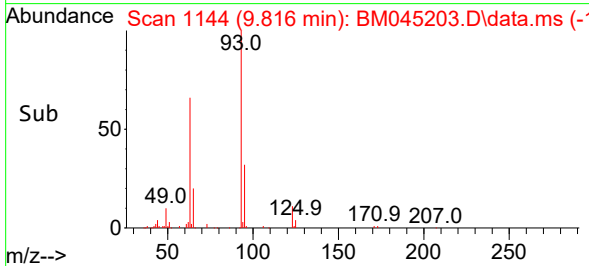
BNA_M

ClientSampleId :

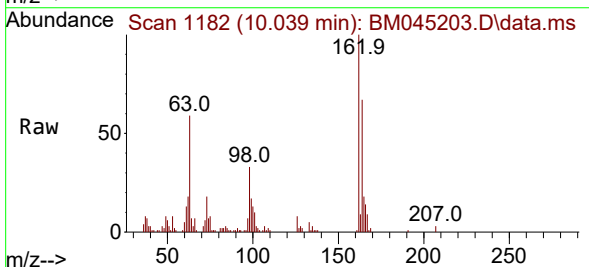
SSTD020099



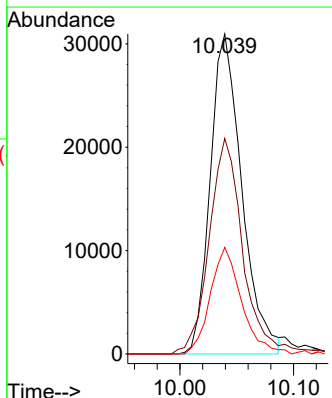
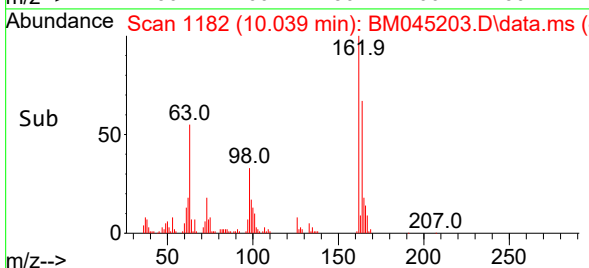
Tgt Ion: 93 Resp: 90398
 Ion Ratio Lower Upper
 93 100
 95 32.4 26.9 40.3
 123 10.6 9.1 13.7

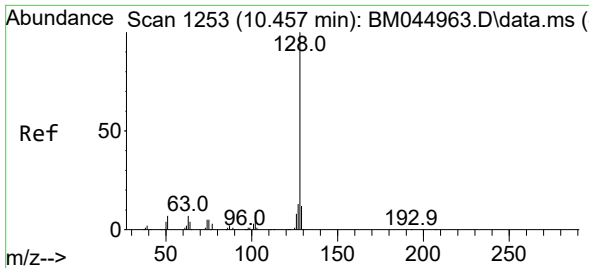


#29
 2,4-Dichlorophenol
 Concen: 19.159 ng/ul
 RT: 10.039 min Scan# 1182
 Delta R.T. -0.012 min
 Lab File: BM045203.D
 Acq: 13 Apr 2024 12:19



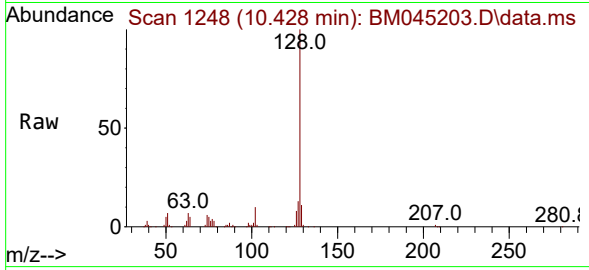
Tgt Ion: 162 Resp: 59945
 Ion Ratio Lower Upper
 162 100
 164 67.3 50.4 75.6
 98 33.3 27.0 40.4



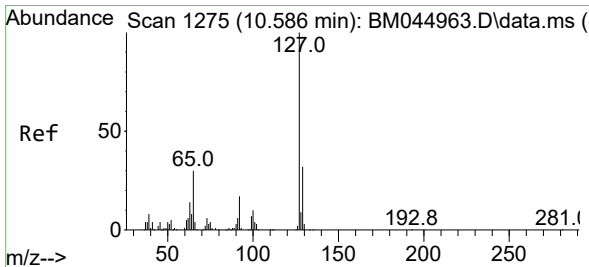
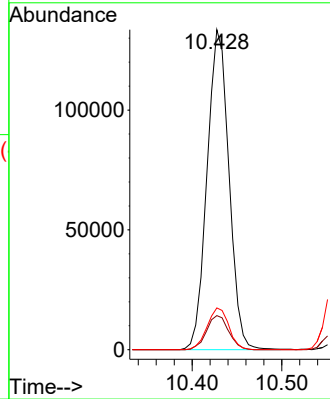
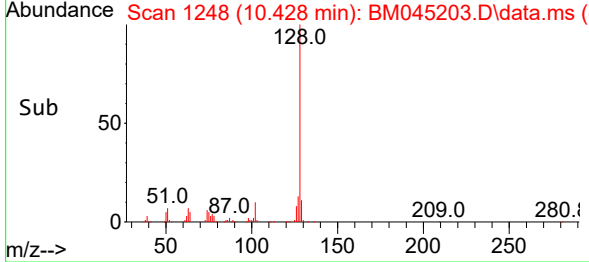


#30
 Naphthalene
 Concen: 20.527 ng/uI
 RT: 10.428 min Scan# 1248
 Delta R.T. -0.012 min
 Lab File: BM045203.D
 Acq: 13 Apr 2024 12:19

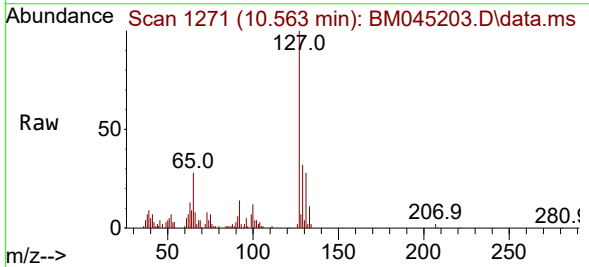
Instrument :
 BNA_M
 ClientSampleId :
 SSTD020099



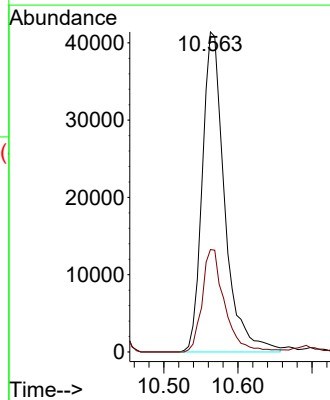
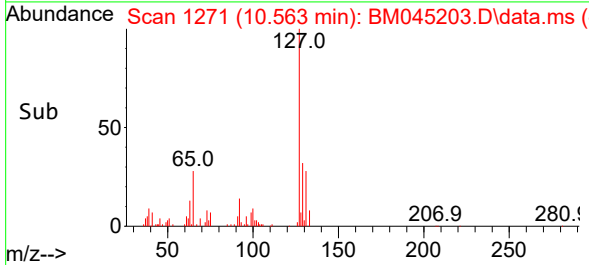
Tgt Ion:128 Resp: 226382
 Ion Ratio Lower Upper
 128 100
 129 10.7 8.5 12.7
 127 13.1 10.2 15.4

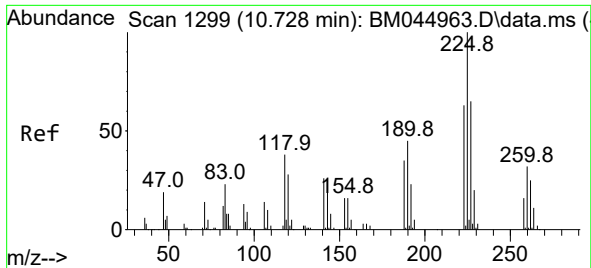


#32
 4-Chloroaniline
 Concen: 18.101 ng/uI
 RT: 10.563 min Scan# 1271
 Delta R.T. -0.012 min
 Lab File: BM045203.D
 Acq: 13 Apr 2024 12:19



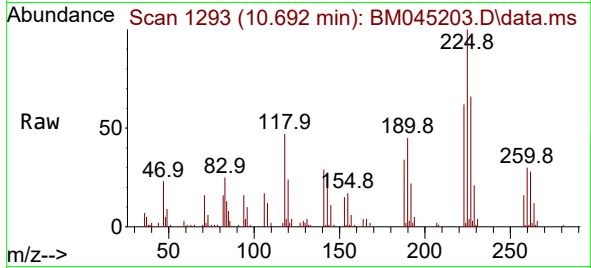
Tgt Ion:127 Resp: 86841
 Ion Ratio Lower Upper
 127 100
 129 32.0 26.2 39.2



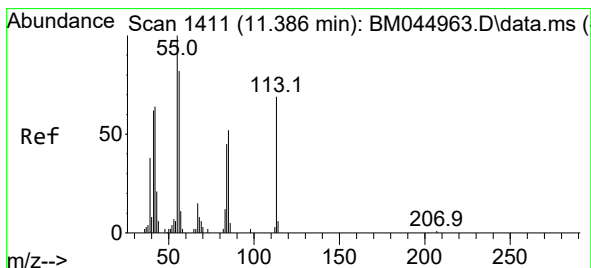
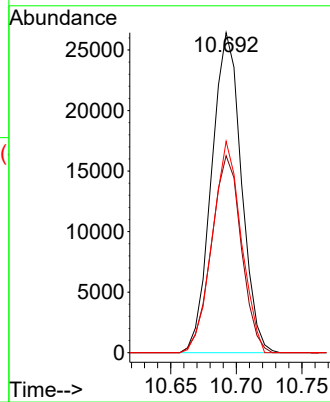
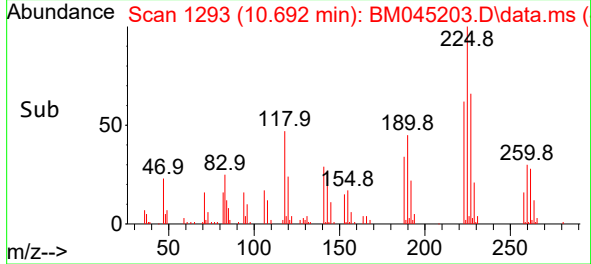


#33
 Hexachlorobutadiene
 Concen: 21.494 ng/ul
 RT: 10.692 min Scan# 111
 Delta R.T. -0.012 min
 Lab File: BM045203.D
 Acq: 13 Apr 2024 12:19

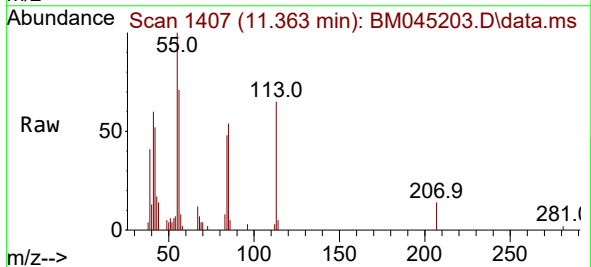
Instrument :
 BNA_M
 ClientSampleId :
 SSTD020099



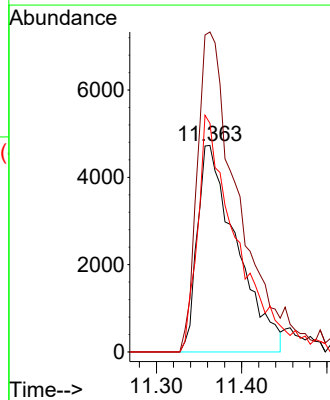
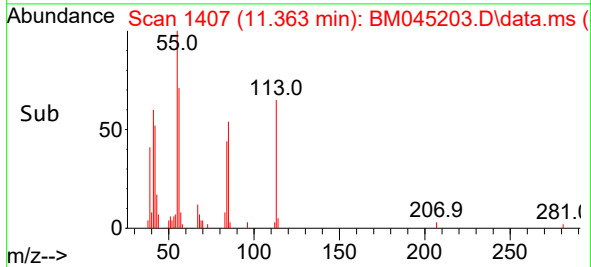
Tgt Ion:225 Resp: 41814
 Ion Ratio Lower Upper
 225 100
 223 61.5 45.3 67.9
 227 66.0 47.6 71.4

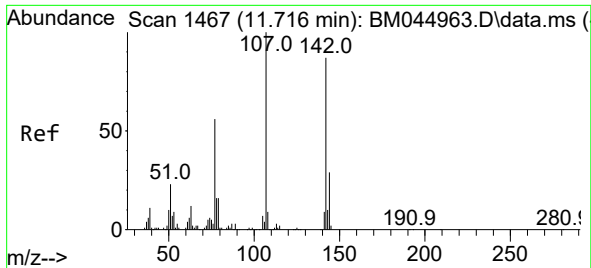


#34
 Caprolactam
 Concen: 14.341 ng/ul
 RT: 11.363 min Scan# 1407
 Delta R.T. -0.006 min
 Lab File: BM045203.D
 Acq: 13 Apr 2024 12:19



Tgt Ion:113 Resp: 15149
 Ion Ratio Lower Upper
 113 100
 55 154.9 125.4 188.0
 56 110.7 91.8 137.8



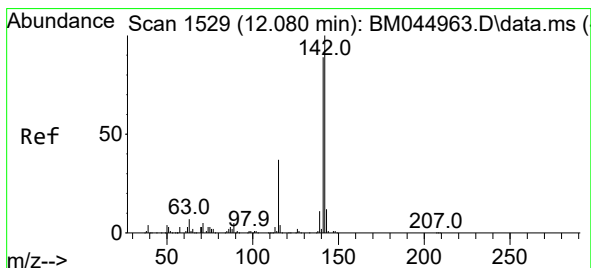
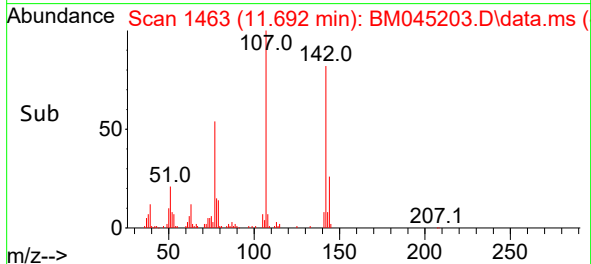
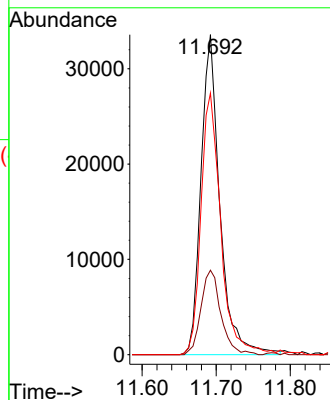
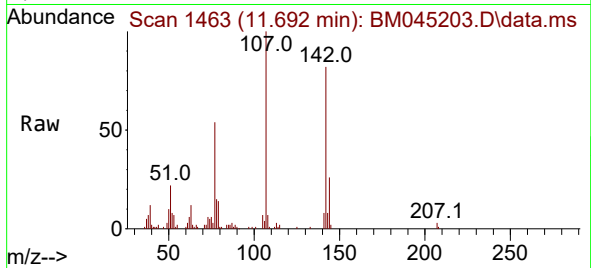


#35
 4-Chloro-3-methylphenol
 Concen: 19.119 ng/ul
 RT: 11.692 min Scan# 1463
 Delta R.T. -0.012 min
 Lab File: BM045203.D
 Acq: 13 Apr 2024 12:19

Instrument :
 BNA_M
 ClientSampleId :
 SSTD020099

Tgt Ion:107 Resp: 59465

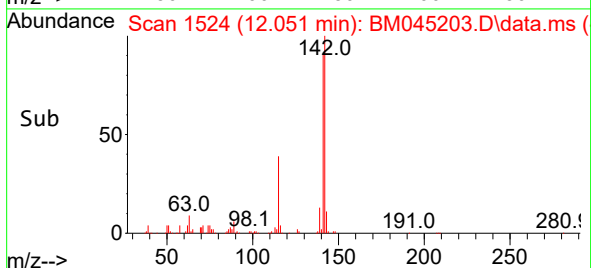
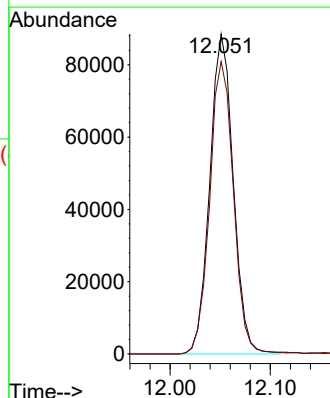
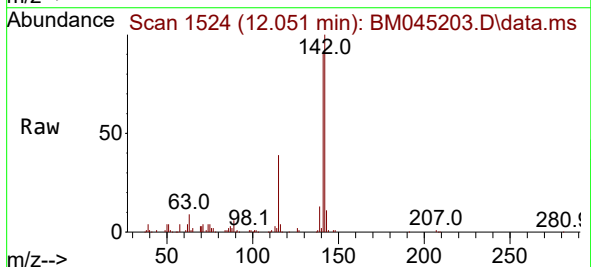
Ion	Ratio	Lower	Upper
107	100		
144	26.4	22.8	34.2
142	81.8	69.8	104.6

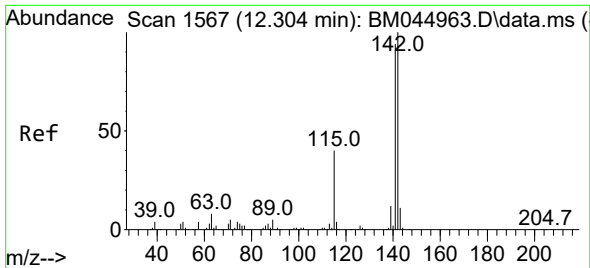


#36
 2-Methylnaphthalene
 Concen: 20.010 ng/ul
 RT: 12.051 min Scan# 1524
 Delta R.T. -0.012 min
 Lab File: BM045203.D
 Acq: 13 Apr 2024 12:19

Tgt Ion:142 Resp: 144093

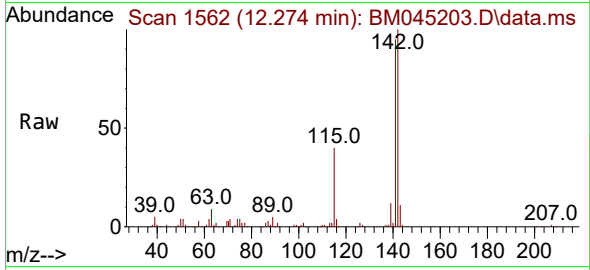
Ion	Ratio	Lower	Upper
142	100		
141	91.3	72.3	108.5



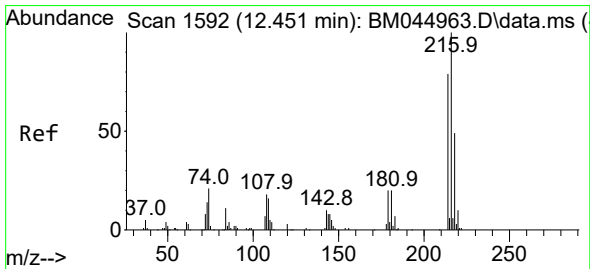
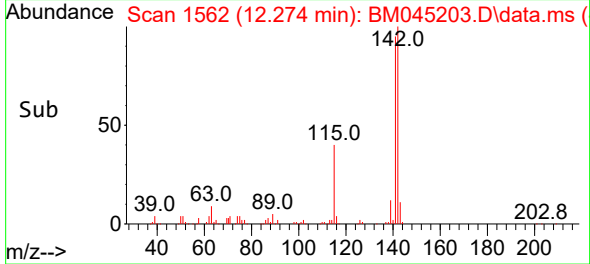
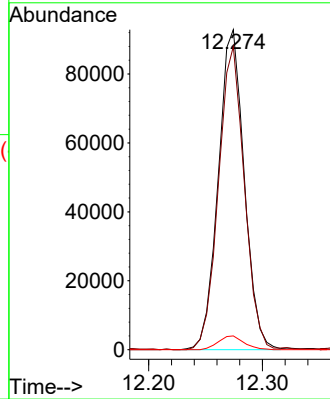


#37
1-Methylnaphthalene
Concen: 20.256 ng/ul
RT: 12.274 min Scan# 1567
Delta R.T. -0.012 min
Lab File: BM045203.D
Acq: 13 Apr 2024 12:19

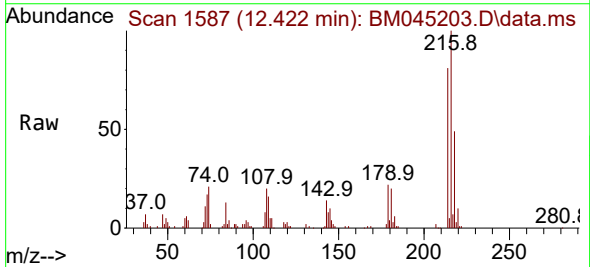
Instrument :
BNA_M
ClientSampleId :
SSTD020099



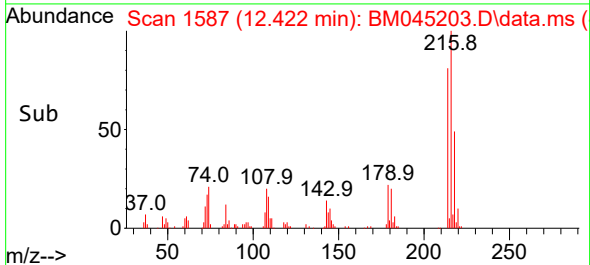
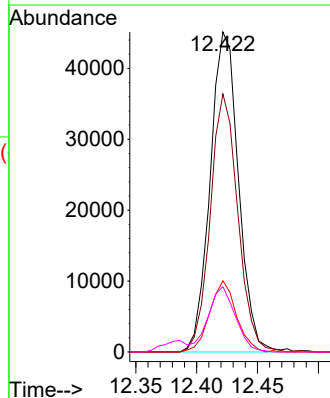
Tgt Ion:142 Resp: 147609
Ion Ratio Lower Upper
142 100
141 94.7 77.2 115.8
116 4.3 3.2 4.8

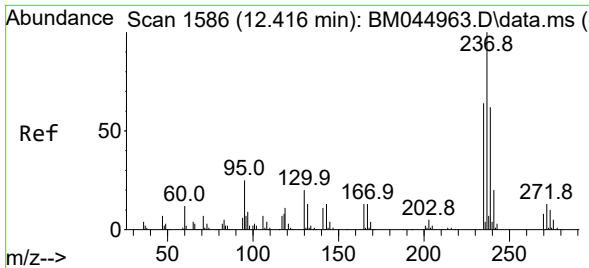


#39
1,2,4,5-Tetrachlorobenzene
Concen: 22.112 ng/ul
RT: 12.422 min Scan# 1587
Delta R.T. -0.012 min
Lab File: BM045203.D
Acq: 13 Apr 2024 12:19



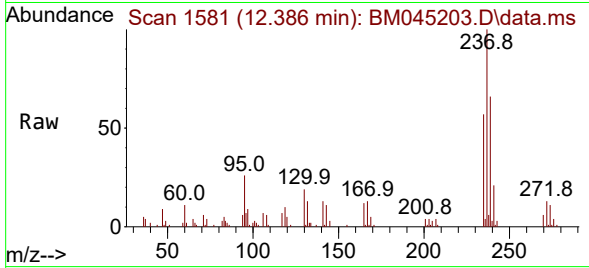
Tgt Ion:216 Resp: 73214
Ion Ratio Lower Upper
216 100
214 80.7 63.5 95.3
179 22.2 16.6 25.0
108 20.4 15.0 22.4



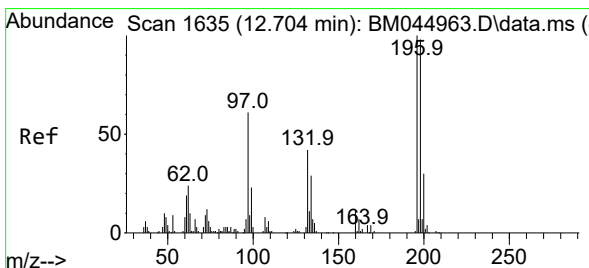
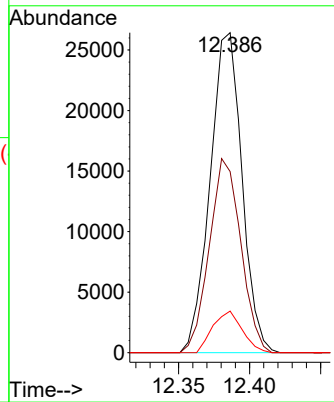
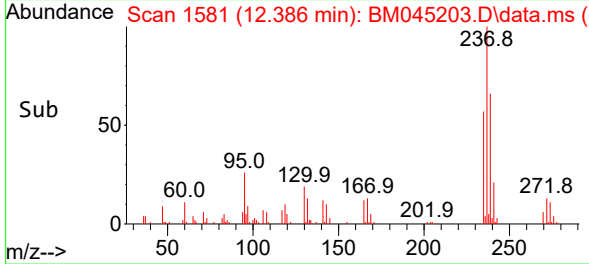


#40
 Hexachlorocyclopentadiene
 Concen: 20.569 ng/ul
 RT: 12.386 min Scan# 1581
 Delta R.T. -0.012 min
 Lab File: BM045203.D
 Acq: 13 Apr 2024 12:19

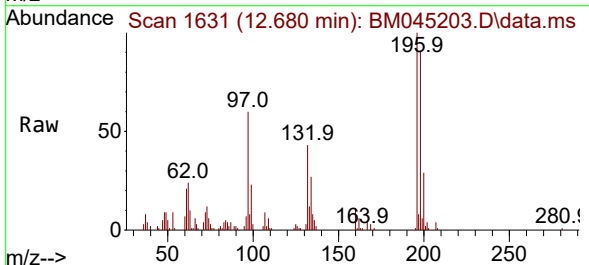
Instrument :
 BNA_M
 ClientSampleId :
 SSTD020099



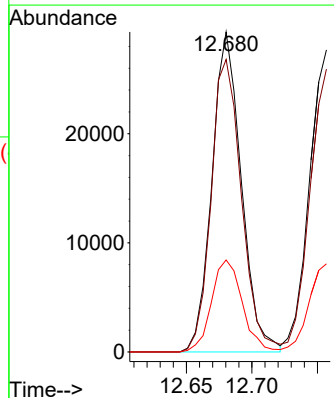
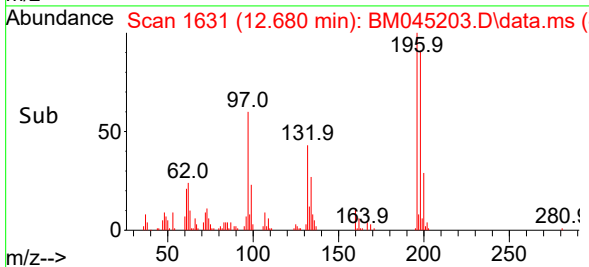
Tgt Ion:237 Resp: 41227
 Ion Ratio Lower Upper
 237 100
 235 56.6 51.3 76.9
 272 13.9 10.1 15.1

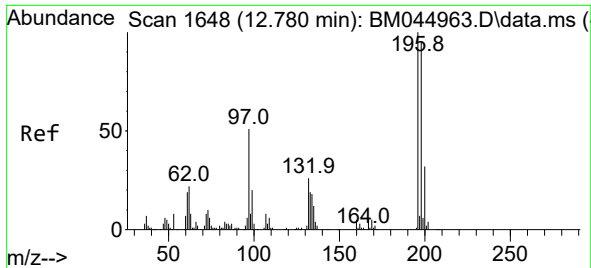


#41
 2,4,6-Trichlorophenol
 Concen: 21.129 ng/ul
 RT: 12.680 min Scan# 1631
 Delta R.T. -0.006 min
 Lab File: BM045203.D
 Acq: 13 Apr 2024 12:19



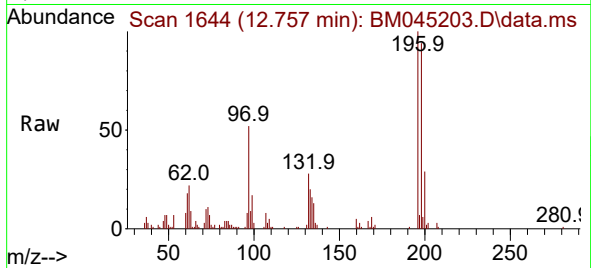
Tgt Ion:196 Resp: 45635
 Ion Ratio Lower Upper
 196 100
 198 91.4 79.4 119.2
 200 28.8 25.0 37.4



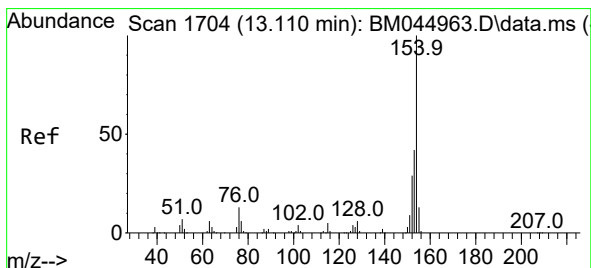
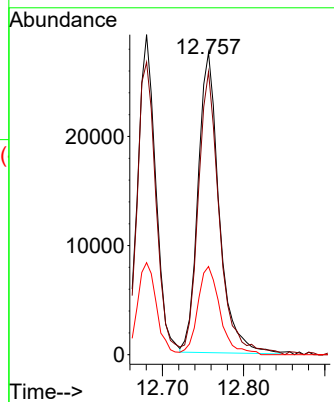
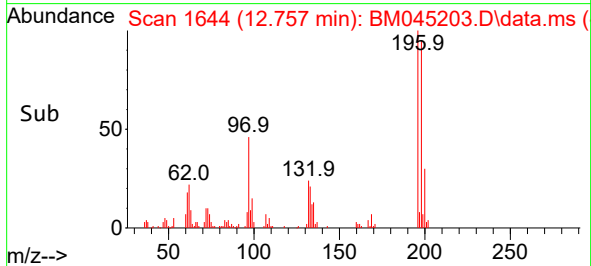


#42
 2,4,5-Trichlorophenol
 Concen: 20.943 ng/ul
 RT: 12.757 min Scan# 1
 Delta R.T. -0.006 min
 Lab File: BM045203.D
 Acq: 13 Apr 2024 12:19

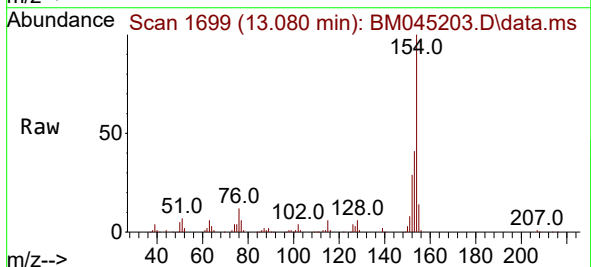
Instrument :
 BNA_M
 ClientSampleId :
 SSTD020099



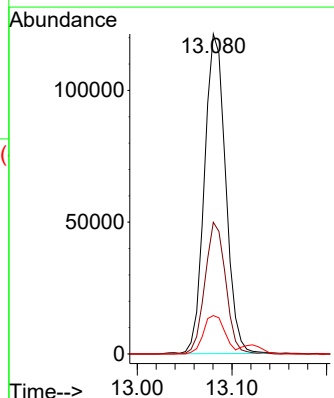
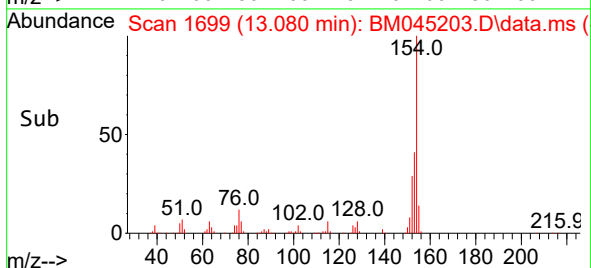
Tgt Ion:196 Resp: 49841
 Ion Ratio Lower Upper
 196 100
 198 93.6 79.9 119.9
 200 29.2 25.6 38.4

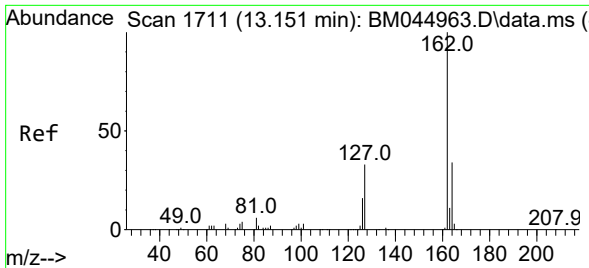


#43
 1,1'-Biphenyl
 Concen: 21.988 ng/ul
 RT: 13.080 min Scan# 1699
 Delta R.T. -0.012 min
 Lab File: BM045203.D
 Acq: 13 Apr 2024 12:19



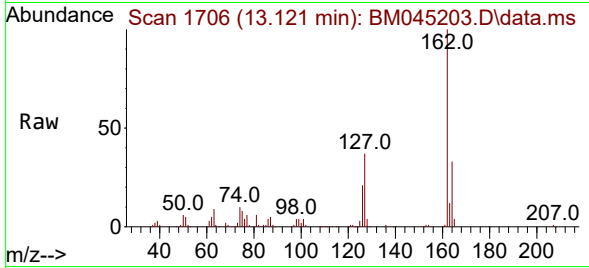
Tgt Ion:154 Resp: 187980
 Ion Ratio Lower Upper
 154 100
 153 41.2 31.6 47.4
 76 12.0 10.4 15.6



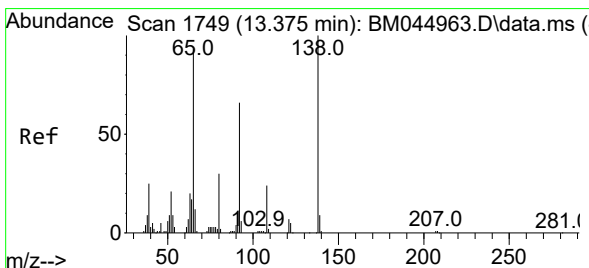
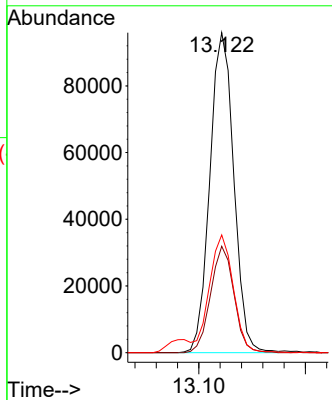
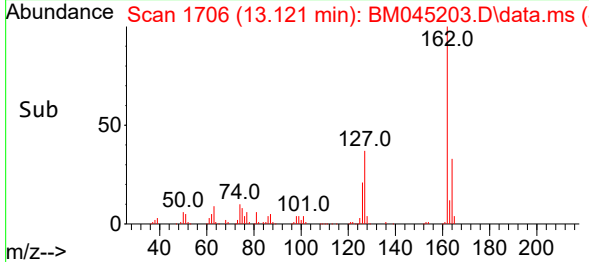


#44
 2-Chloronaphthalene
 Concen: 21.531 ng/u1
 RT: 13.121 min Scan# 1706
 Delta R.T. -0.012 min
 Lab File: BM045203.D
 Acq: 13 Apr 2024 12:19

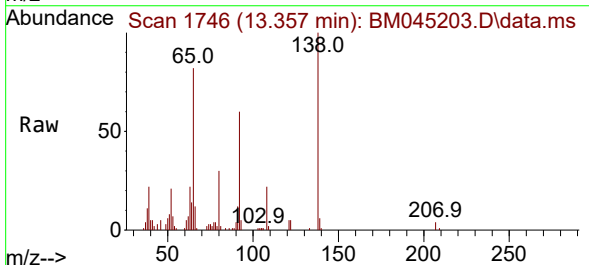
Instrument : BNA_M
 ClientSampleId : SSTD020099



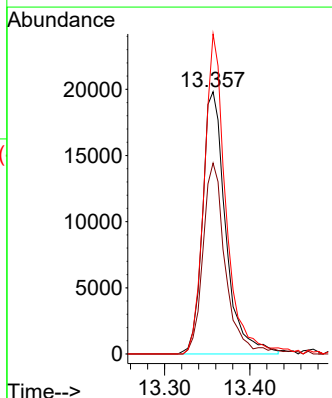
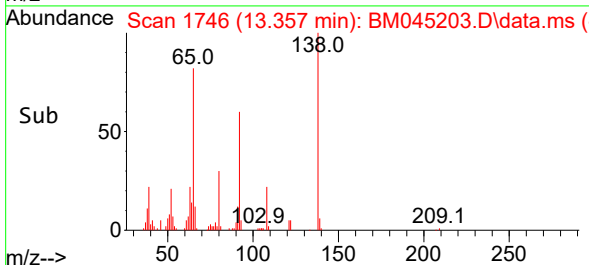
Tgt Ion:162 Resp: 149546
 Ion Ratio Lower Upper
 162 100
 164 33.3 26.1 39.1
 127 36.8 30.1 45.1

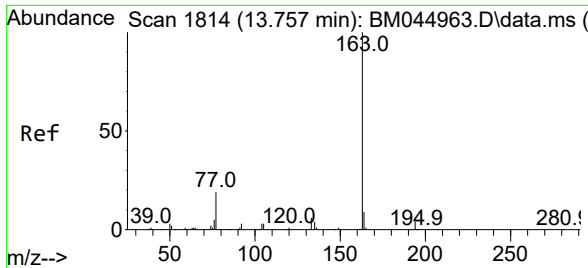


#45
 2-Nitroaniline
 Concen: 19.463 ng/u1
 RT: 13.357 min Scan# 1746
 Delta R.T. -0.006 min
 Lab File: BM045203.D
 Acq: 13 Apr 2024 12:19



Tgt Ion: 65 Resp: 37317
 Ion Ratio Lower Upper
 65 100
 92 72.8 55.2 82.8
 138 122.0 93.0 139.4



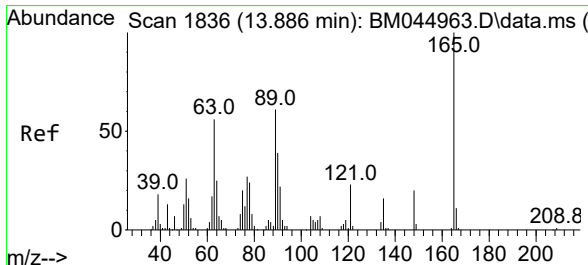
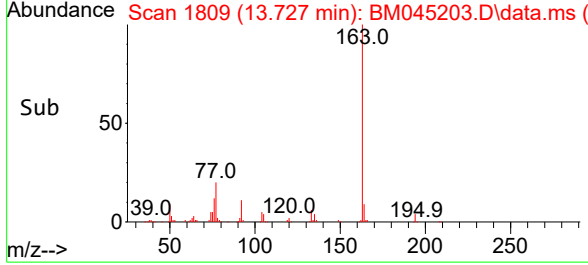
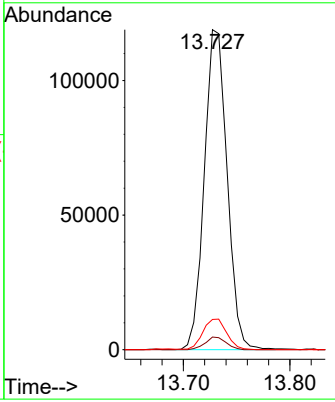
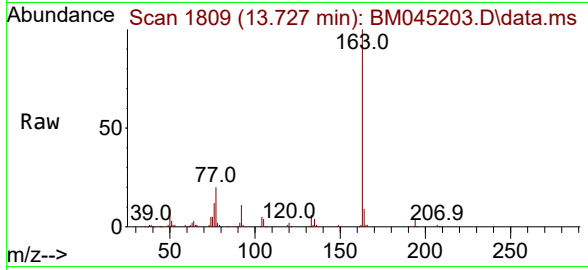


#47
 Dimethylphthalate
 Concen: 20.056 ng/ul
 RT: 13.727 min Scan# 1809
 Delta R.T. -0.012 min
 Lab File: BM045203.D
 Acq: 13 Apr 2024 12:19

Instrument : BNA_M
 ClientSampleId : SSTD020099

Tgt Ion:163 Resp: 176709

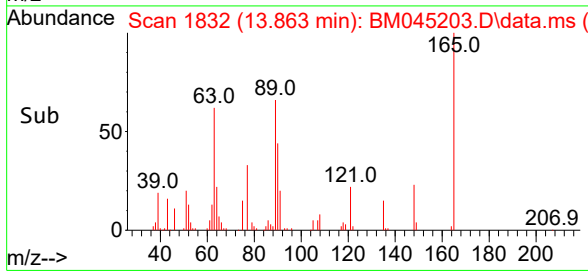
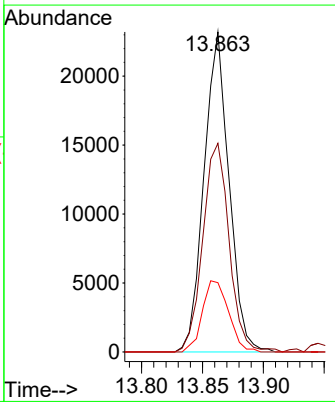
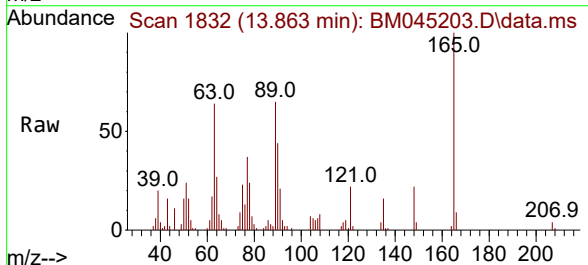
Ion	Ratio	Lower	Upper
163	100		
194	3.9	2.8	4.2
164	9.5	7.8	11.8

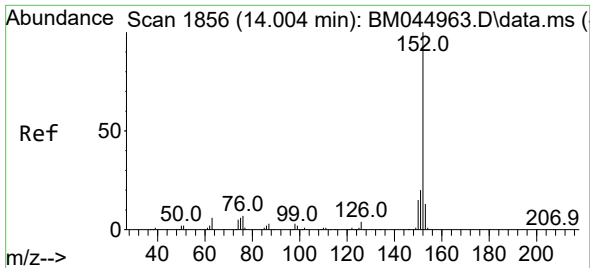


#48
 2,6-Dinitrotoluene
 Concen: 19.214 ng/ul
 RT: 13.863 min Scan# 1832
 Delta R.T. -0.006 min
 Lab File: BM045203.D
 Acq: 13 Apr 2024 12:19

Tgt Ion:165 Resp: 33182

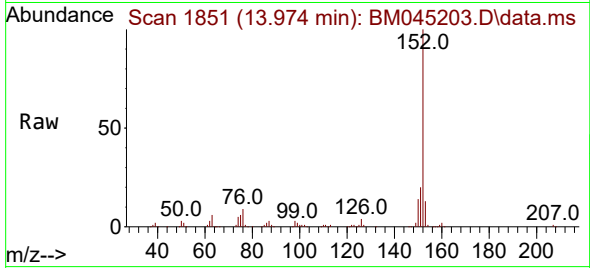
Ion	Ratio	Lower	Upper
165	100		
89	65.2	45.0	67.4
121	21.7	18.0	27.0



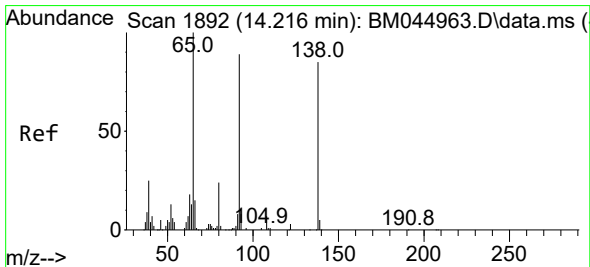
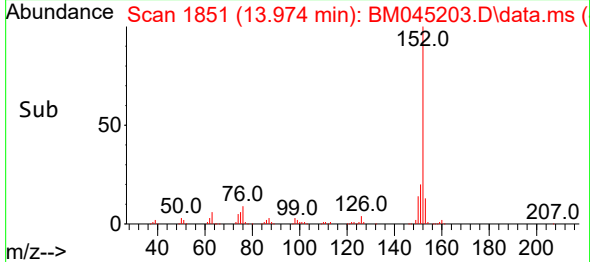
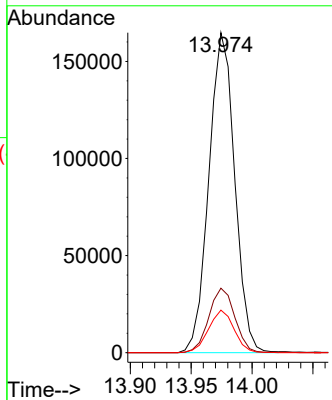


#50
 Acenaphthylene
 Concen: 20.921 ng/u1
 RT: 13.974 min Scan# 1851
 Delta R.T. -0.012 min
 Lab File: BM045203.D
 Acq: 13 Apr 2024 12:19

Instrument :
 BNA_M
 ClientSampleId :
 SSTD020099

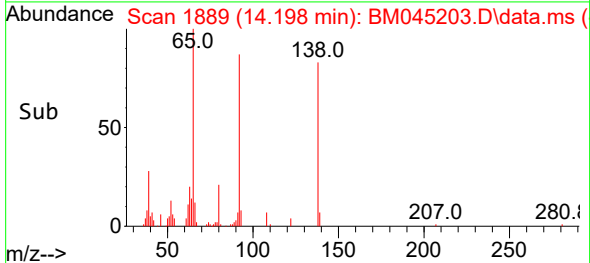
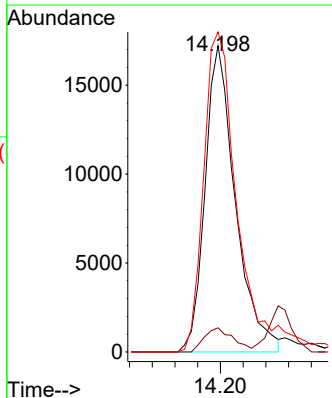
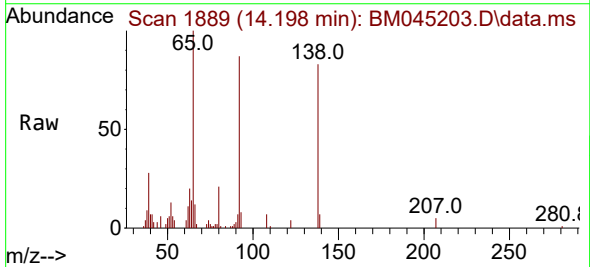


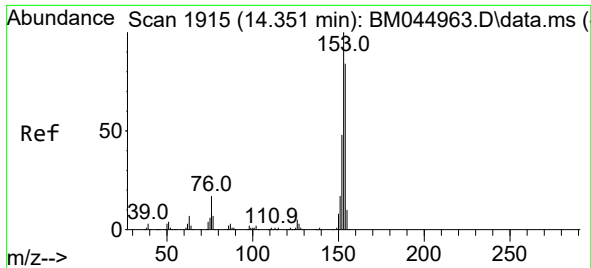
Tgt Ion:152 Resp: 243327
 Ion Ratio Lower Upper
 152 100
 151 20.2 16.0 24.0
 153 13.3 10.2 15.2



#51
 3-Nitroaniline
 Concen: 16.964 ng/u1
 RT: 14.198 min Scan# 1889
 Delta R.T. -0.006 min
 Lab File: BM045203.D
 Acq: 13 Apr 2024 12:19

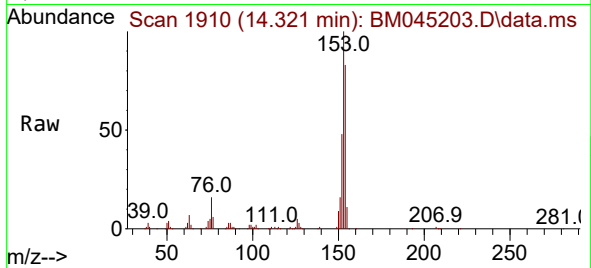
Tgt Ion:138 Resp: 31957
 Ion Ratio Lower Upper
 138 100
 108 7.9 6.5 9.7
 92 104.5 81.4 122.0



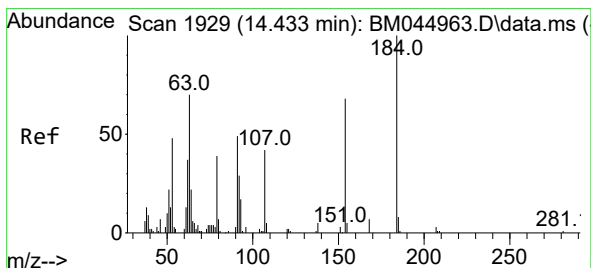
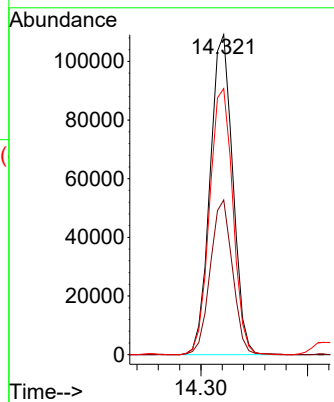
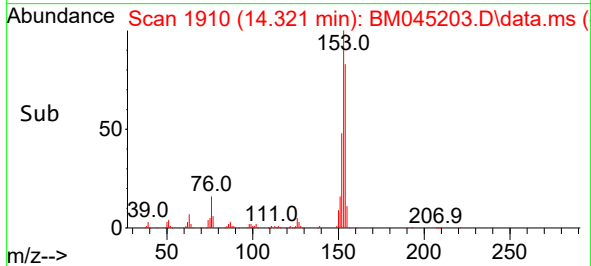


#52
 Acenaphthene
 Concen: 20.813 ng/ul
 RT: 14.321 min Scan# 1915
 Delta R.T. -0.006 min
 Lab File: BM045203.D
 Acq: 13 Apr 2024 12:19

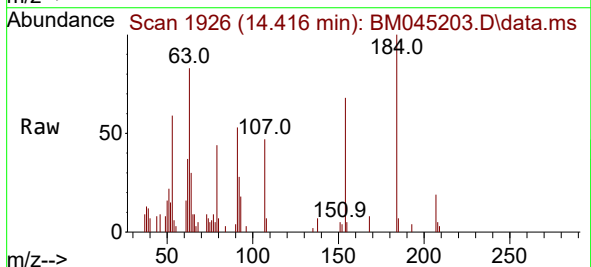
Instrument :
 BNA_M
 ClientSampleId :
 SST020099



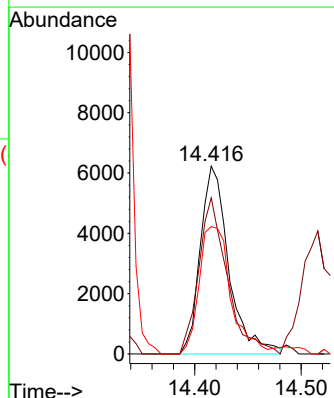
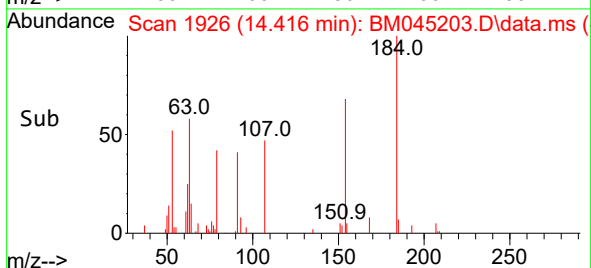
Tgt Ion:153 Resp: 161529
 Ion Ratio Lower Upper
 153 100
 152 48.4 38.6 58.0
 154 83.1 69.4 104.2

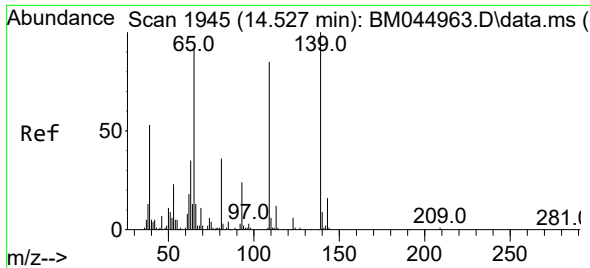


#53
 2,4-Dinitrophenol
 Concen: 11.309 ng/ul
 RT: 14.416 min Scan# 1926
 Delta R.T. 0.000 min
 Lab File: BM045203.D
 Acq: 13 Apr 2024 12:19



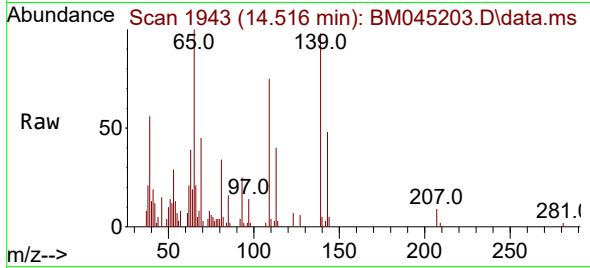
Tgt Ion:184 Resp: 11611
 Ion Ratio Lower Upper
 184 100
 63 83.1 56.9 85.3
 154 67.8 50.3 75.5



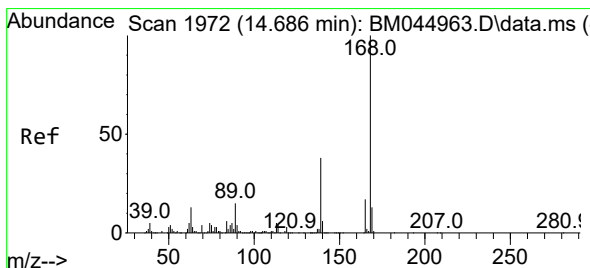
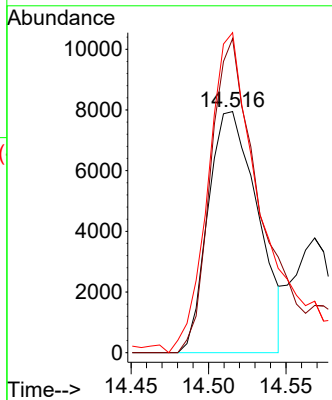
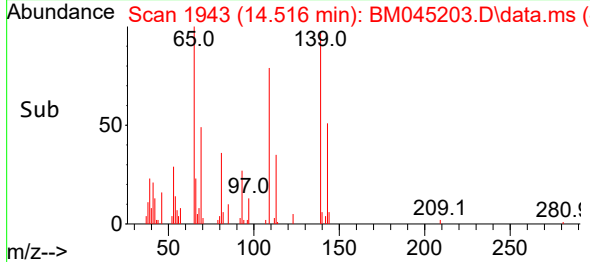


#55
 4-Nitrophenol
 Concen: 11.438 ng/u1
 RT: 14.516 min Scan# 1943
 Delta R.T. 0.000 min
 Lab File: BM045203.D
 Acq: 13 Apr 2024 12:19

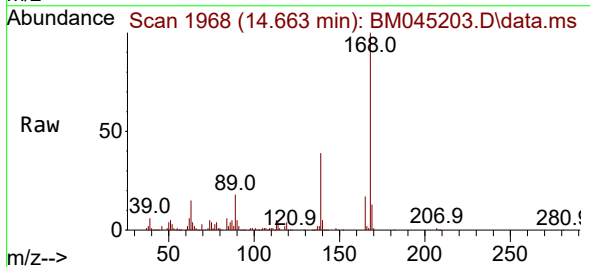
Instrument :
 BNA_M
 ClientSampleId :
 SSTD020099



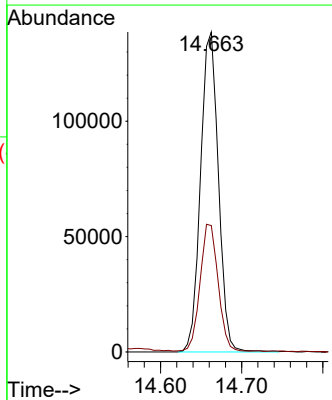
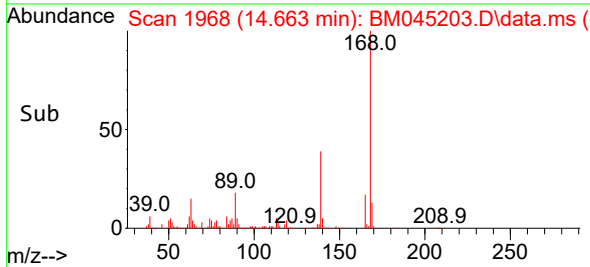
Tgt Ion:109 Resp: 17697
 Ion Ratio Lower Upper
 109 100
 139 130.3 107.7 161.5
 65 132.8 96.3 144.5

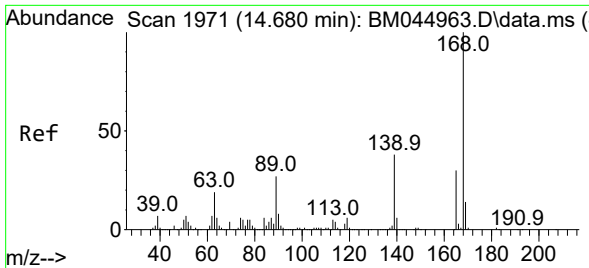


#56
 Dibenzofuran
 Concen: 19.937 ng/u1
 RT: 14.663 min Scan# 1968
 Delta R.T. -0.006 min
 Lab File: BM045203.D
 Acq: 13 Apr 2024 12:19



Tgt Ion:168 Resp: 211739
 Ion Ratio Lower Upper
 168 100
 139 39.5 30.6 46.0

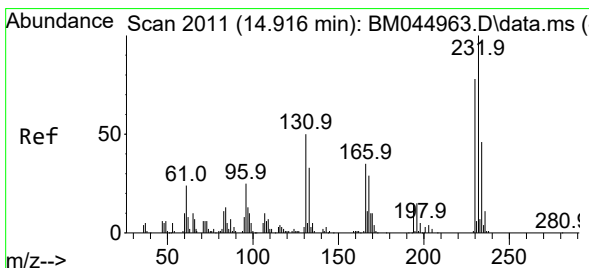
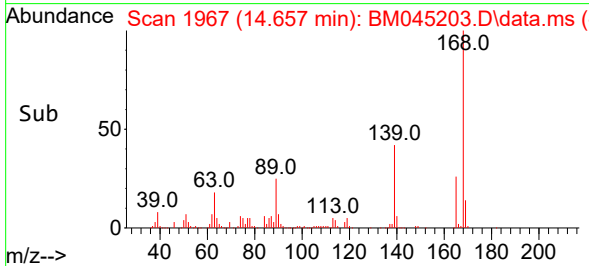
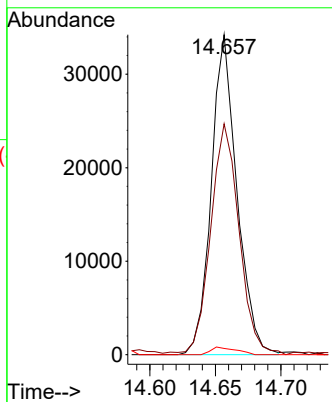
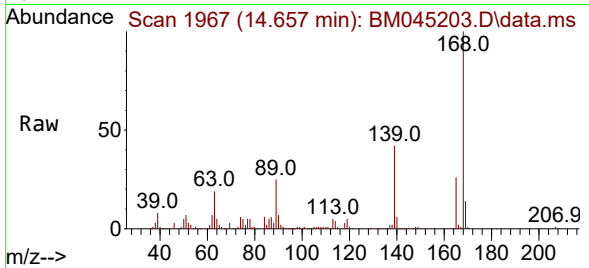




#57
 2,4-Dinitrotoluene
 Concen: 18.013 ng/ul
 RT: 14.657 min Scan# 11
 Delta R.T. -0.006 min
 Lab File: BM045203.D
 Acq: 13 Apr 2024 12:19

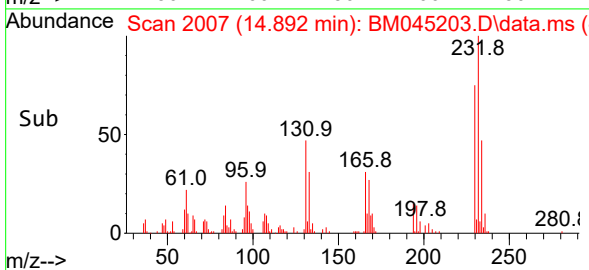
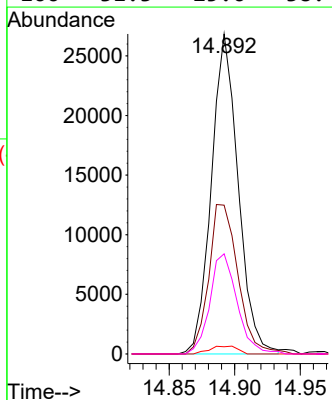
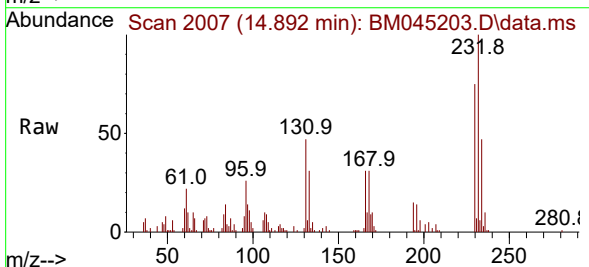
Instrument :
 BNA_M
 ClientSampleId :
 SSTD020099

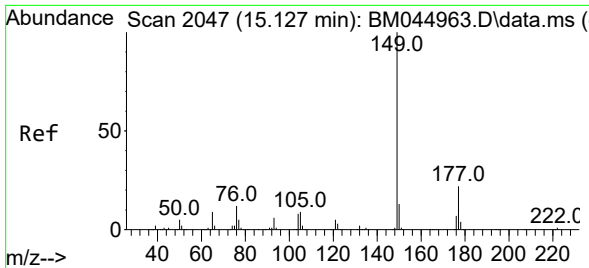
Tgt Ion:165 Resp: 46564
 Ion Ratio Lower Upper
 165 100
 63 72.2 52.0 78.0
 182 1.9 2.3 3.5#



#58
 2,3,4,6-Tetrachlorophenol
 Concen: 18.727 ng/ul
 RT: 14.892 min Scan# 2007
 Delta R.T. -0.006 min
 Lab File: BM045203.D
 Acq: 13 Apr 2024 12:19

Tgt Ion:232 Resp: 38142
 Ion Ratio Lower Upper
 232 100
 131 46.5 43.4 65.0
 130 2.2 2.6 4.0#
 166 31.3 25.6 38.4



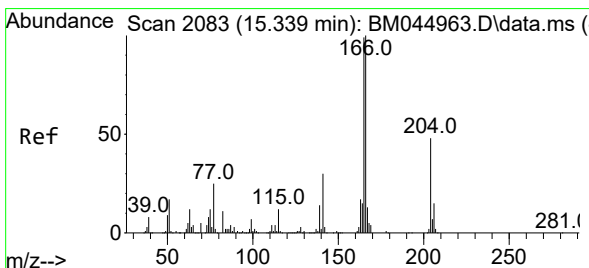
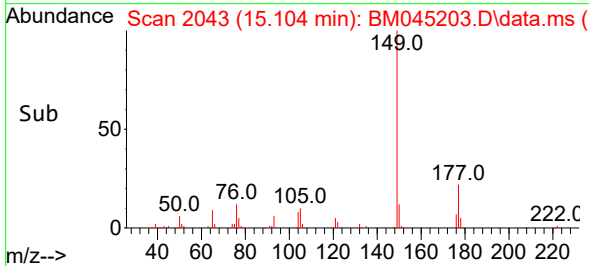
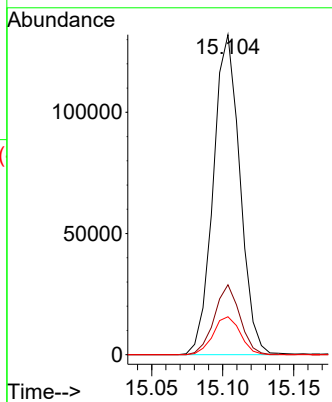
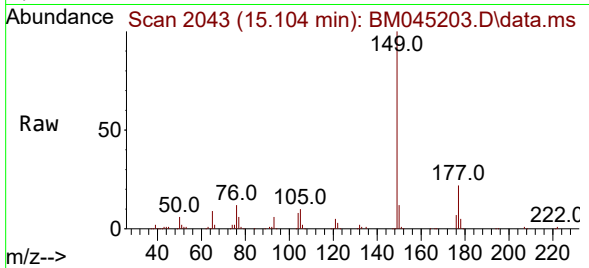


#59
 Diethylphthalate
 Concen: 19.207 ng/uI
 RT: 15.104 min Scan# 2043
 Delta R.T. -0.012 min
 Lab File: BM045203.D
 Acq: 13 Apr 2024 12:19

Instrument :
 BNA_M
 ClientSampleId :
 SSTD020099

Tgt Ion:149 Resp: 172648

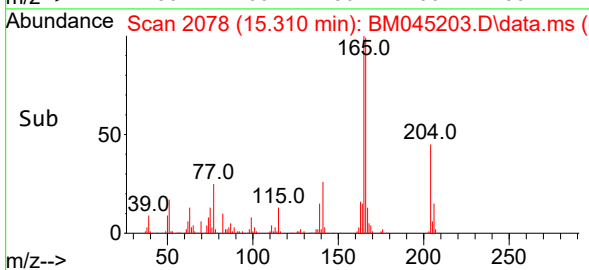
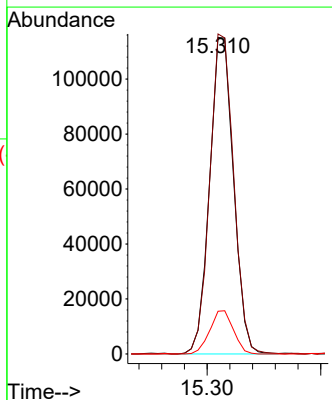
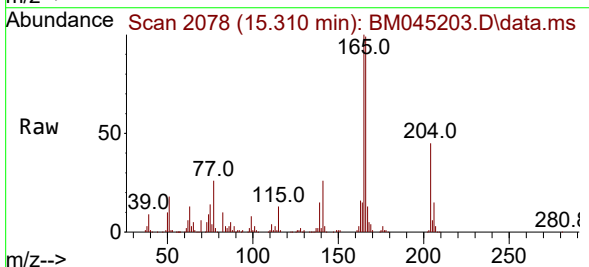
Ion	Ratio	Lower	Upper
149	100		
177	21.9	16.4	24.6
150	11.9	10.3	15.5

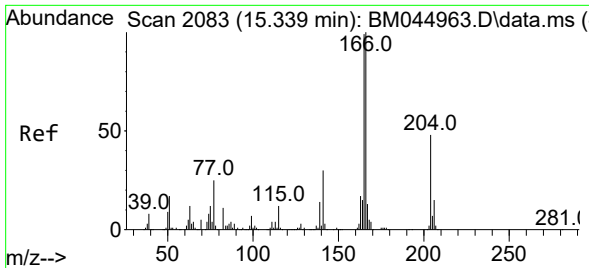


#61
 Fluorene
 Concen: 18.823 ng/uI
 RT: 15.310 min Scan# 2078
 Delta R.T. -0.012 min
 Lab File: BM045203.D
 Acq: 13 Apr 2024 12:19

Tgt Ion:166 Resp: 168486

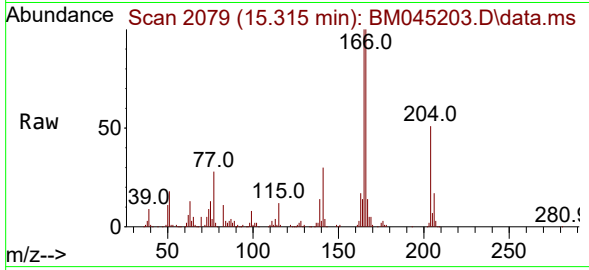
Ion	Ratio	Lower	Upper
166	100		
165	101.1	80.5	120.7
167	13.5	11.0	16.6



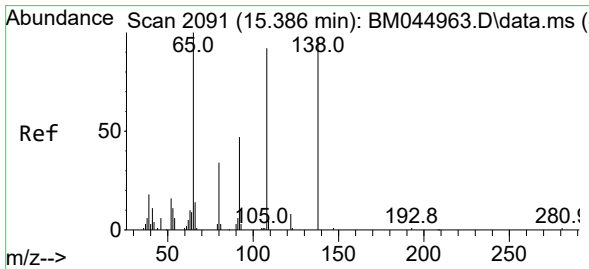
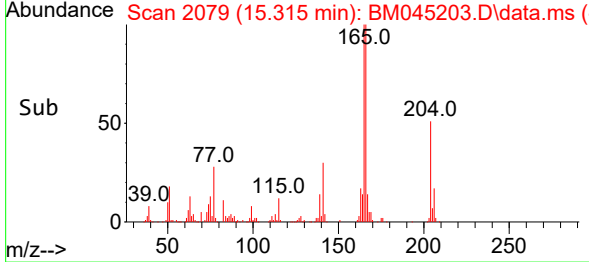
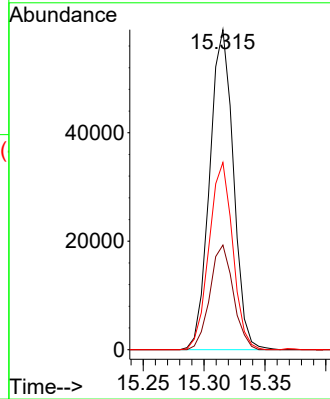


#62
 4-Chlorophenyl-phenylether
 Concen: 19.031 ng/ul
 RT: 15.315 min Scan# 2079
 Delta R.T. -0.006 min
 Lab File: BM045203.D
 Acq: 13 Apr 2024 12:19

Instrument :
 BNA_M
 ClientSampleId :
 SSTD020099

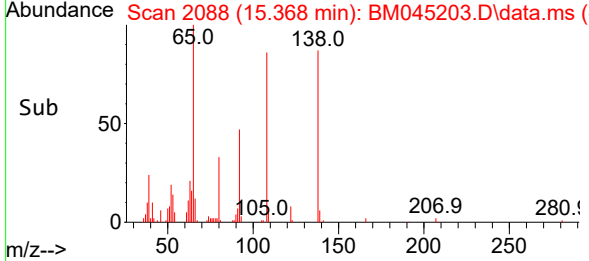
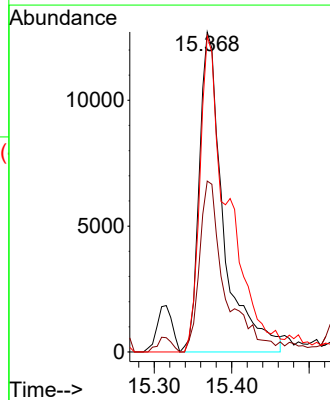
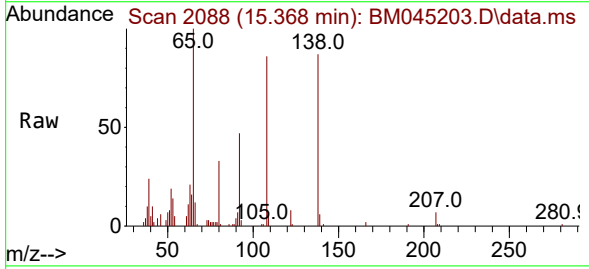


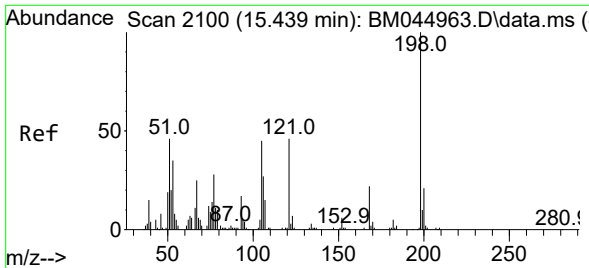
Tgt Ion:204 Resp: 79846
 Ion Ratio Lower Upper
 204 100
 206 32.7 24.9 37.3
 141 58.5 46.2 69.2



#63
 4-Nitroaniline
 Concen: 16.078 ng/ul
 RT: 15.368 min Scan# 2088
 Delta R.T. -0.006 min
 Lab File: BM045203.D
 Acq: 13 Apr 2024 12:19

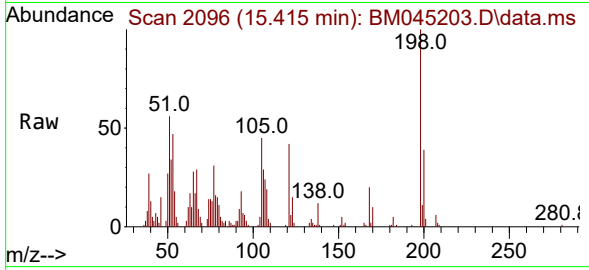
Tgt Ion:138 Resp: 27536
 Ion Ratio Lower Upper
 138 100
 92 53.4 39.8 59.6
 108 98.7 66.4 99.6



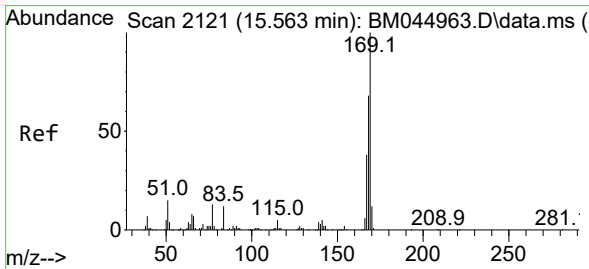
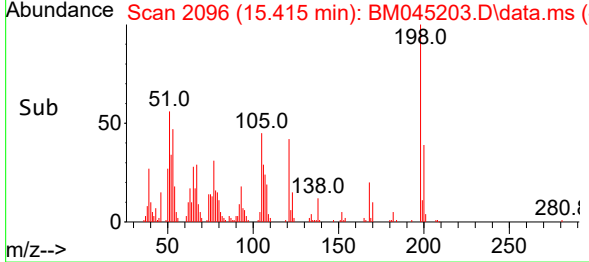
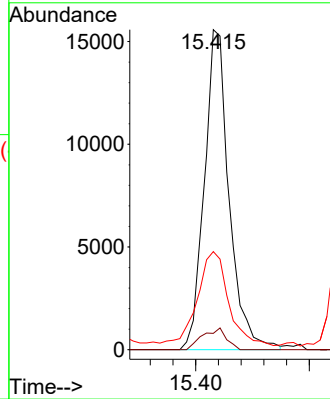


#66
 4,6-Dinitro-2-methylphenol
 Concen: 16.290 ng/ul
 RT: 15.415 min Scan# 2096
 Delta R.T. -0.012 min
 Lab File: BM045203.D
 Acq: 13 Apr 2024 12:19

Instrument :
 BNA_M
 ClientSampleId :
 SSTD020099

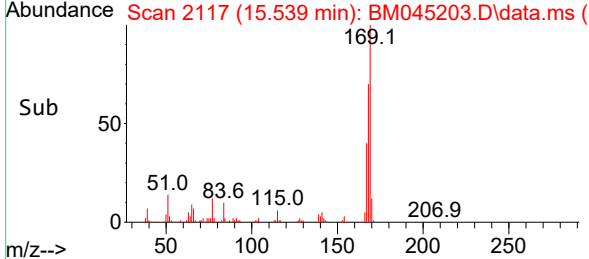
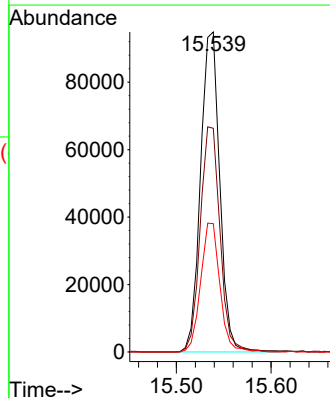
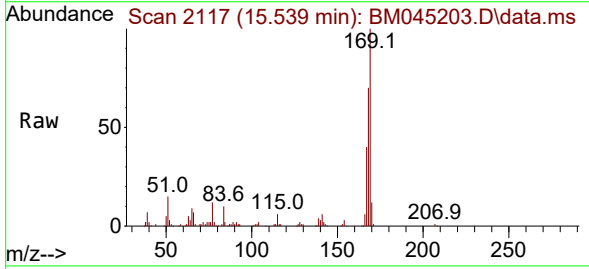


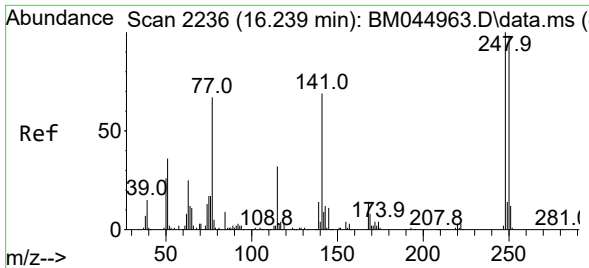
Tgt Ion:198 Resp: 23564
 Ion Ratio Lower Upper
 198 100
 182 5.1 3.8 5.6
 77 30.6 24.6 37.0



#67
 N-Nitrosodiphenylamine
 Concen: 21.749 ng/ul
 RT: 15.539 min Scan# 2117
 Delta R.T. -0.006 min
 Lab File: BM045203.D
 Acq: 13 Apr 2024 12:19

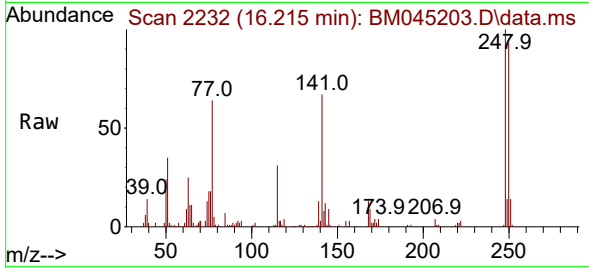
Tgt Ion:169 Resp: 133658
 Ion Ratio Lower Upper
 169 100
 168 69.9 56.7 85.1
 167 40.1 31.2 46.8





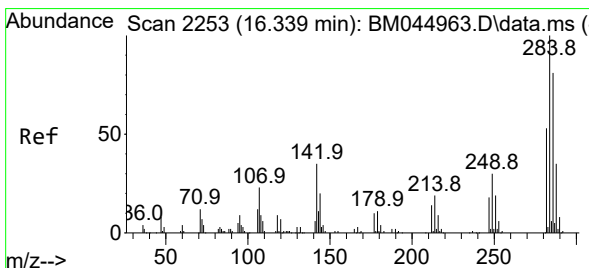
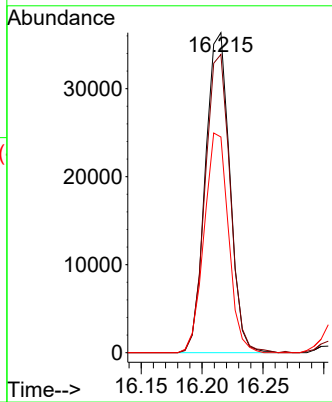
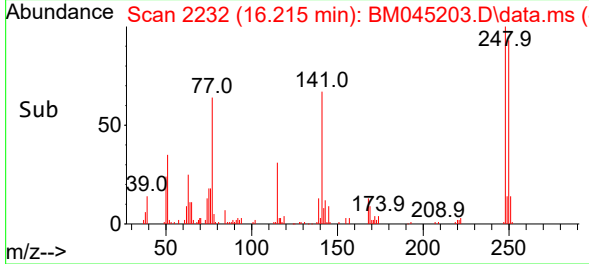
#68
 4-Bromophenyl-phenylether
 Concen: 22.801 ng/ul
 RT: 16.215 min Scan# 21
 Delta R.T. -0.006 min
 Lab File: BM045203.D
 Acq: 13 Apr 2024 12:19

Instrument :
 BNA_M
 ClientSampleId :
 SSTD020099

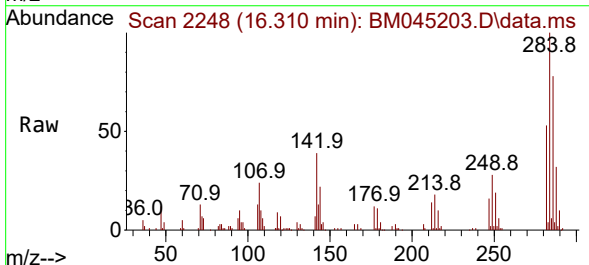


Tgt Ion:248 Resp: 50589

Ion	Ratio	Lower	Upper
248	100		
250	93.2	81.0	121.6
141	67.4	55.1	82.7

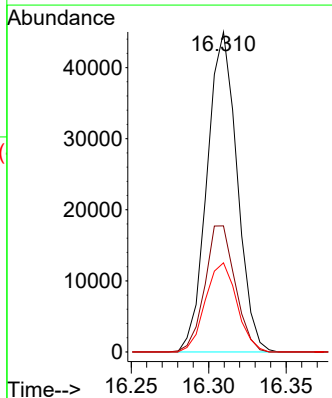
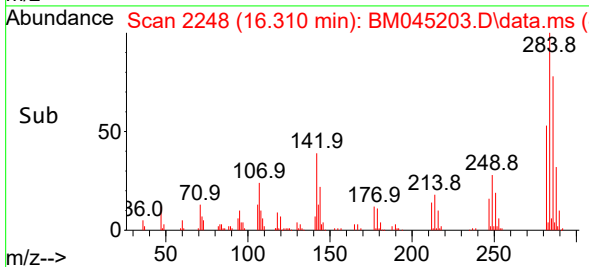


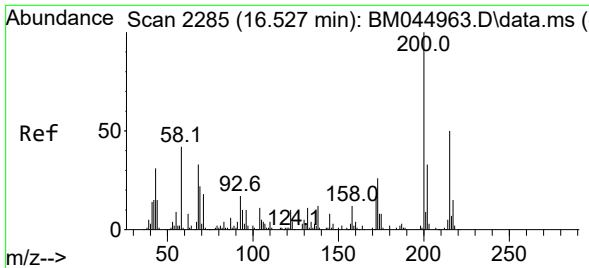
#69
 Hexachlorobenzene
 Concen: 21.006 ng/ul
 RT: 16.310 min Scan# 2248
 Delta R.T. -0.006 min
 Lab File: BM045203.D
 Acq: 13 Apr 2024 12:19



Tgt Ion:284 Resp: 60624

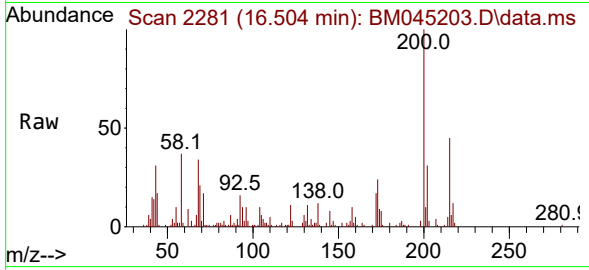
Ion	Ratio	Lower	Upper
284	100		
142	39.4	27.3	40.9
249	27.8	23.6	35.4



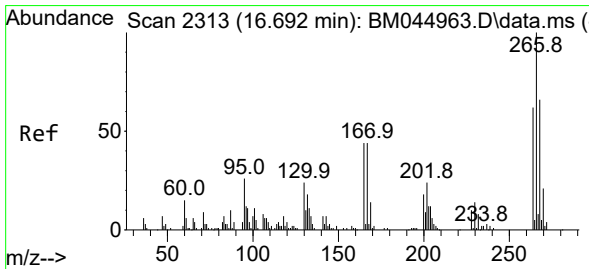
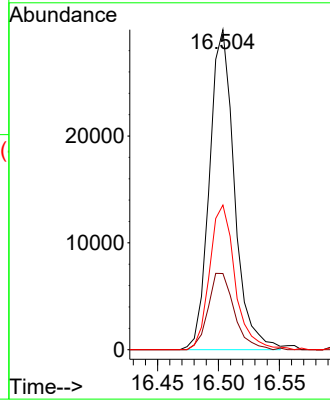
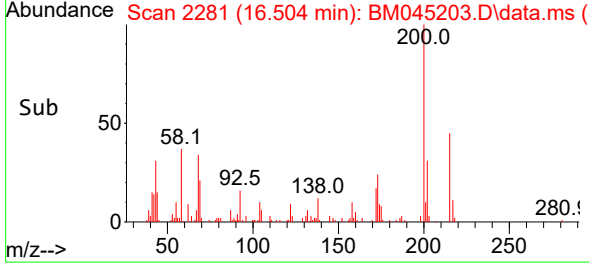


#70
 Atrazine
 Concen: 18.901 ng/ul
 RT: 16.504 min Scan# 21
 Delta R.T. -0.006 min
 Lab File: BM045203.D
 Acq: 13 Apr 2024 12:19

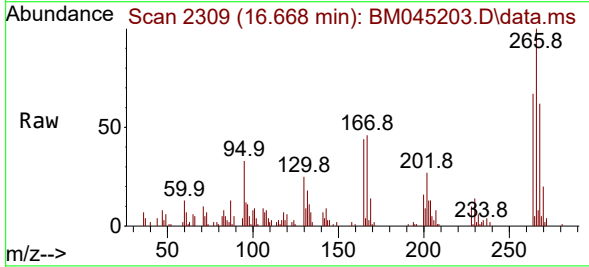
Instrument :
 BNA_M
 ClientSampleId :
 SSTD020099



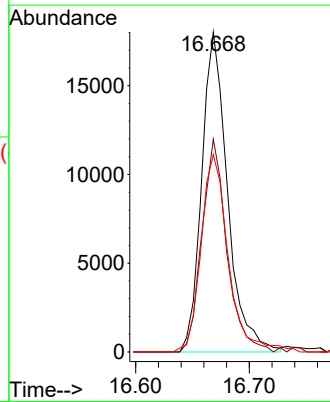
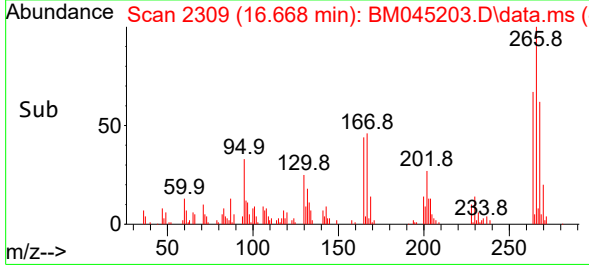
Tgt Ion:200 Resp: 42726
 Ion Ratio Lower Upper
 200 100
 173 23.8 20.3 30.5
 215 45.2 37.9 56.9

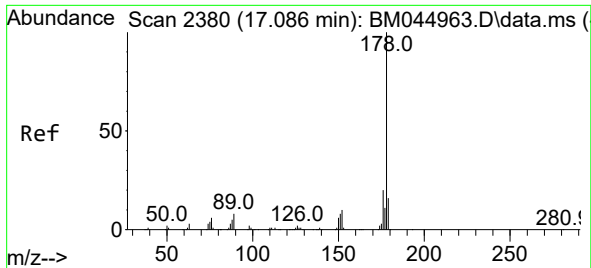


#71
 Pentachlorophenol
 Concen: 16.244 ng/ul
 RT: 16.668 min Scan# 2309
 Delta R.T. -0.006 min
 Lab File: BM045203.D
 Acq: 13 Apr 2024 12:19



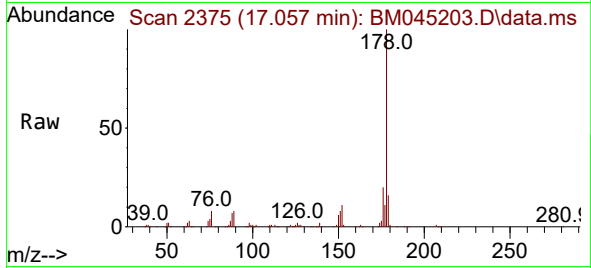
Tgt Ion:266 Resp: 28478
 Ion Ratio Lower Upper
 266 100
 264 66.5 49.3 73.9
 268 66.6 53.3 79.9



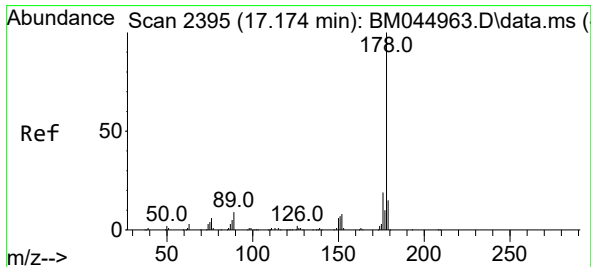
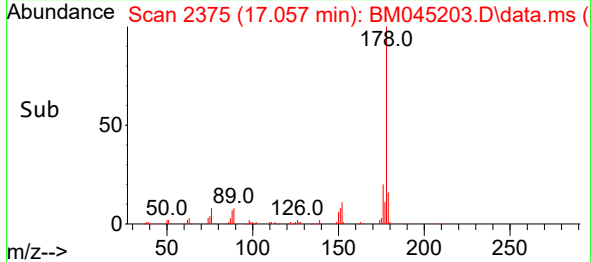
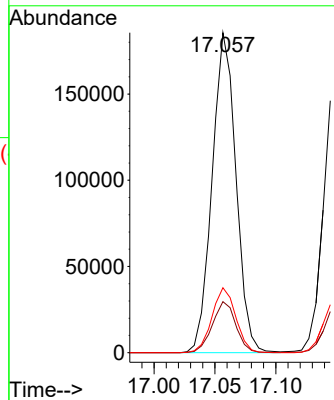


#72
 Phenanthrene
 Concen: 20.656 ng/u1
 RT: 17.057 min Scan# 21
 Delta R.T. -0.012 min
 Lab File: BM045203.D
 Acq: 13 Apr 2024 12:19

Instrument :
 BNA_M
 ClientSampleId :
 SSTD020099

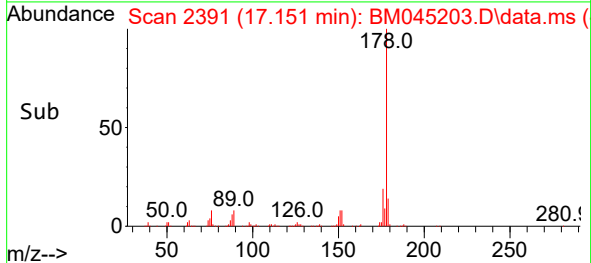
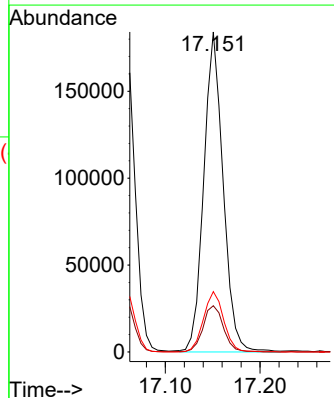
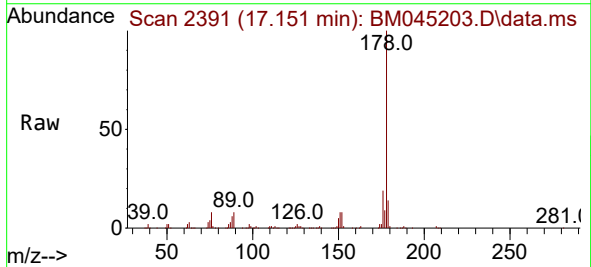


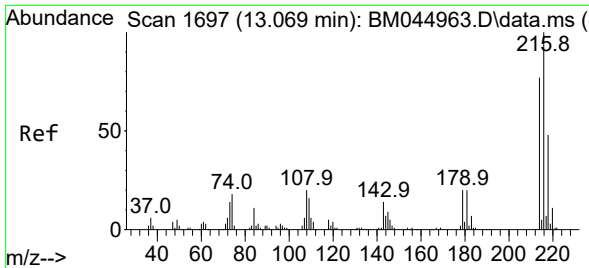
Tgt Ion:178 Resp: 253221
 Ion Ratio Lower Upper
 178 100
 179 16.0 11.9 17.9
 176 20.3 15.4 23.2



#74
 Anthracene
 Concen: 20.884 ng/u1
 RT: 17.151 min Scan# 2391
 Delta R.T. -0.012 min
 Lab File: BM045203.D
 Acq: 13 Apr 2024 12:19

Tgt Ion:178 Resp: 261896
 Ion Ratio Lower Upper
 178 100
 179 14.5 12.3 18.5
 176 18.8 15.8 23.6





#75
 1,2,3,4-Tetrachlorobenzene
 Concen: 24.903 ng/uL
 RT: 13.039 min Scan# 1692
 Delta R.T. -0.006 min
 Lab File: BM045203.D
 Acq: 13 Apr 2024 12:19

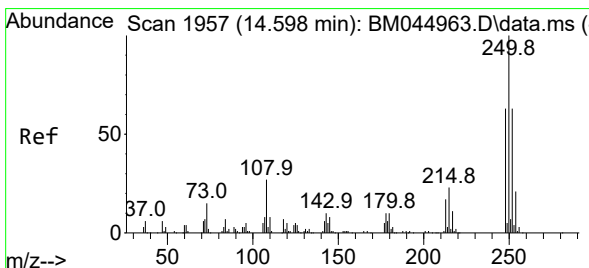
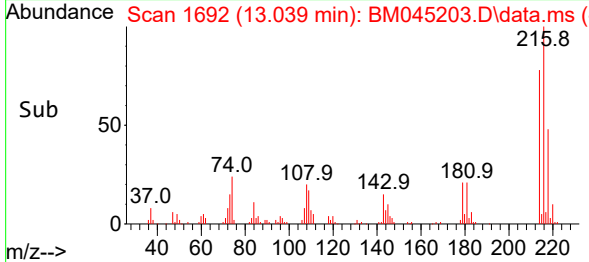
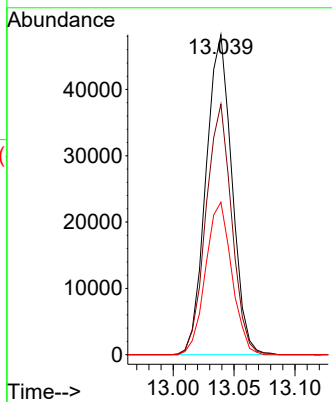
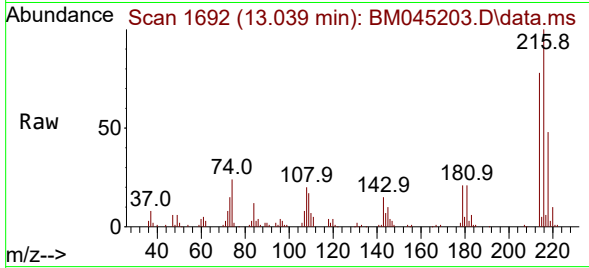
Instrument :

BNA_M

ClientSampleId :

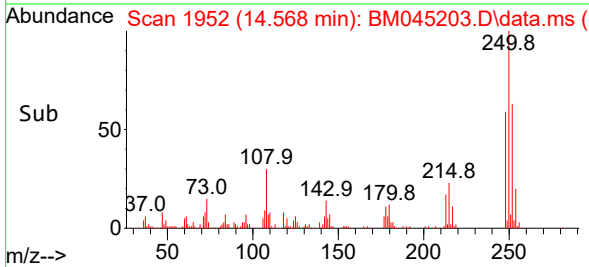
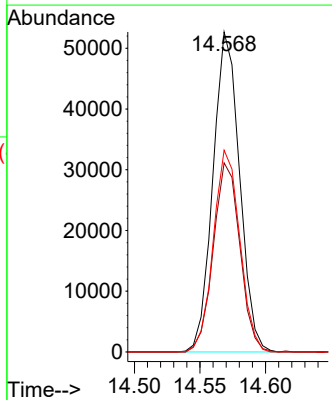
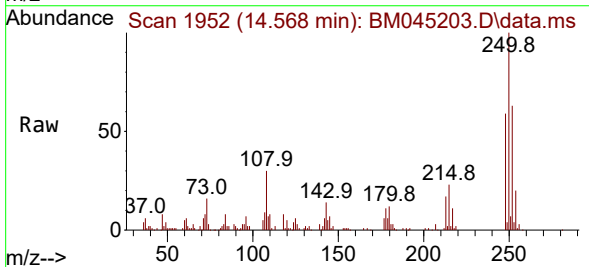
SSTD020099

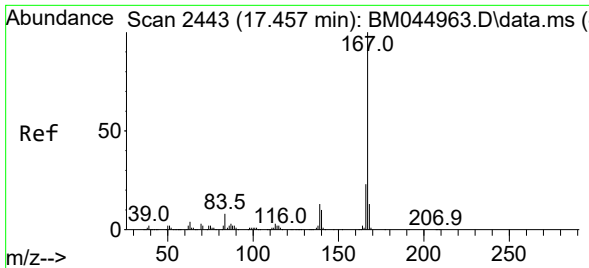
Tgt Ion:216 Resp: 71504
 Ion Ratio Lower Upper
 216 100
 214 78.3 64.1 96.1
 218 47.7 38.6 58.0



#76
 Pentachlorobenzene
 Concen: 24.293 ng/uL
 RT: 14.568 min Scan# 1952
 Delta R.T. -0.012 min
 Lab File: BM045203.D
 Acq: 13 Apr 2024 12:19

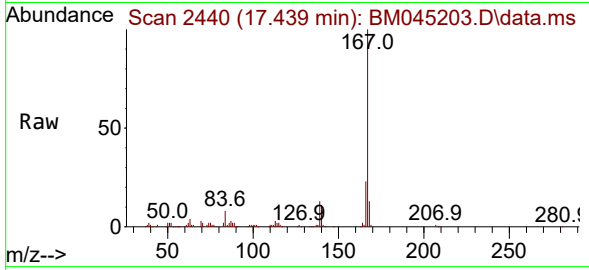
Tgt Ion:250 Resp: 74214
 Ion Ratio Lower Upper
 250 100
 248 59.1 49.8 74.6
 252 63.1 49.4 74.2



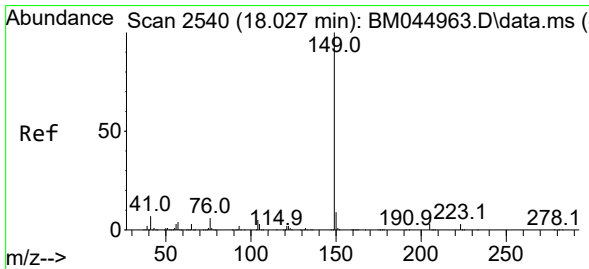
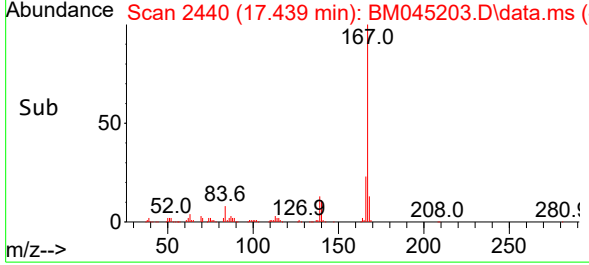
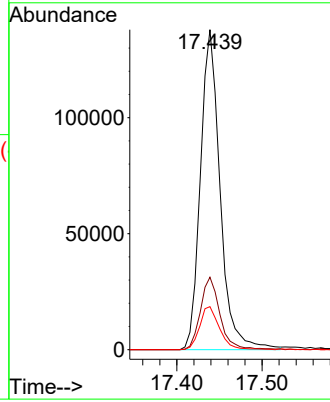


#77
 Carbazole
 Concen: 18.320 ng/u1
 RT: 17.439 min Scan# 24
 Delta R.T. -0.006 min
 Lab File: BM045203.D
 Acq: 13 Apr 2024 12:19

Instrument :
 BNA_M
 ClientSampleId :
 SSTD020099

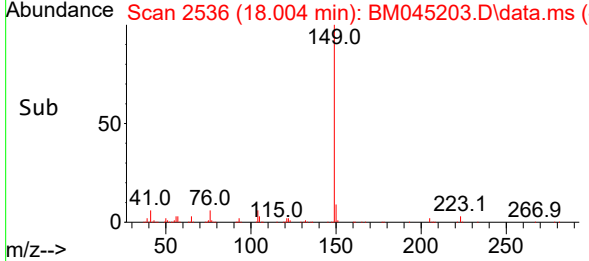
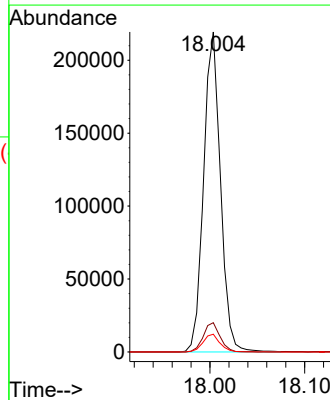
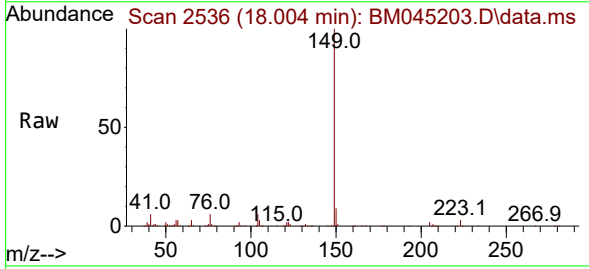


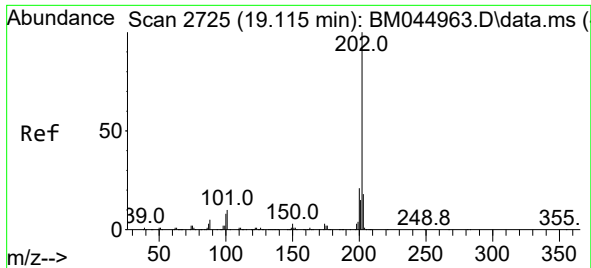
Tgt Ion:167 Resp: 221522
 Ion Ratio Lower Upper
 167 100
 166 22.7 17.3 25.9
 139 13.4 10.7 16.1



#78
 Di-n-butylphthalate
 Concen: 19.914 ng/u1
 RT: 18.004 min Scan# 2536
 Delta R.T. -0.006 min
 Lab File: BM045203.D
 Acq: 13 Apr 2024 12:19

Tgt Ion:149 Resp: 271554
 Ion Ratio Lower Upper
 149 100
 150 9.1 7.2 10.8
 104 5.6 4.3 6.5

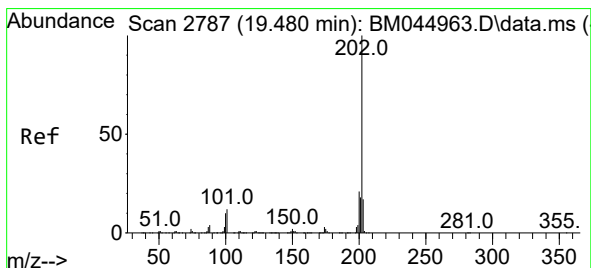
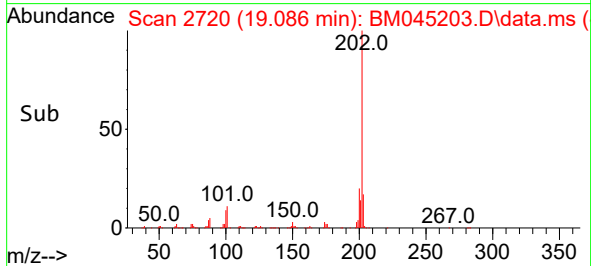
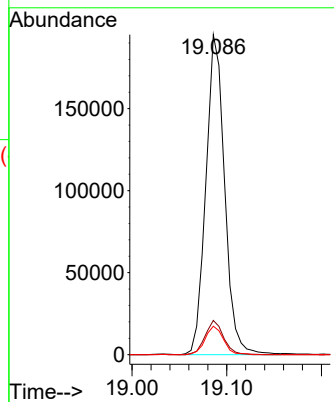
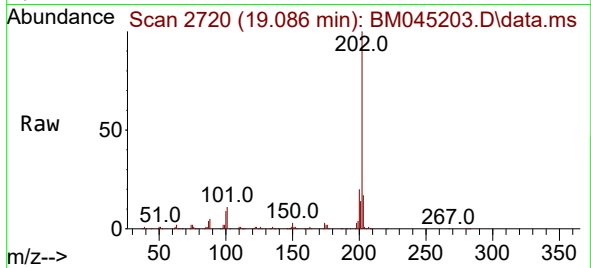




#80
 Fluoranthene
 Concen: 22.300 ng/u1
 RT: 19.086 min Scan# 2725
 Delta R.T. -0.012 min
 Lab File: BM045203.D
 Acq: 13 Apr 2024 12:19

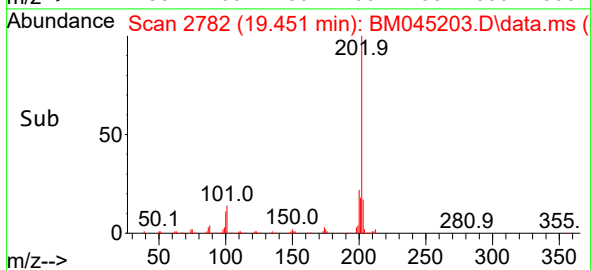
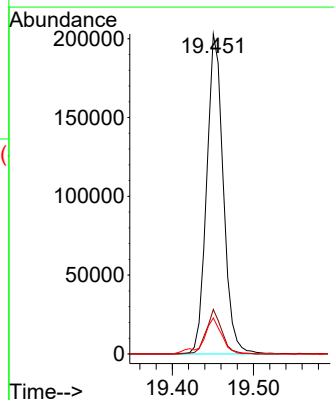
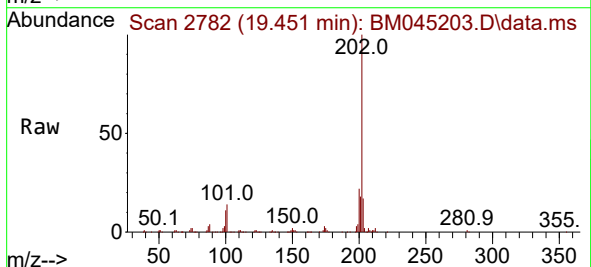
Instrument : BNA_M
 ClientSampleId : SSTD020099

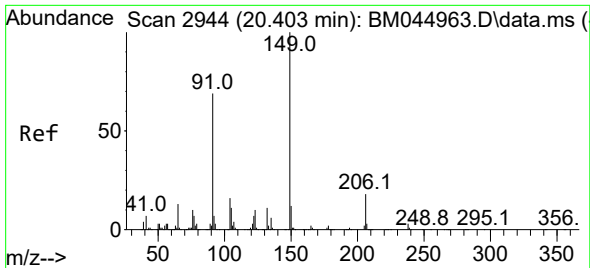
Tgt Ion	Resp	Lower	Upper
202	268893		
101	10.7	8.7	13.1
100	8.9	6.3	9.5



#82
 Pyrene
 Concen: 22.166 ng/u1
 RT: 19.451 min Scan# 2782
 Delta R.T. -0.012 min
 Lab File: BM045203.D
 Acq: 13 Apr 2024 12:19

Tgt Ion	Resp	Lower	Upper
202	288430		
101	13.9	10.2	15.4
100	11.3	8.5	12.7





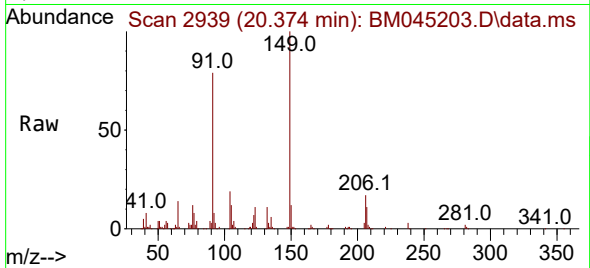
#83
 Butylbenzylphthalate
 Concen: 19.720 ng/ul
 RT: 20.374 min Scan# 2944
 Delta R.T. -0.012 min
 Lab File: BM045203.D
 Acq: 13 Apr 2024 12:19

Instrument :

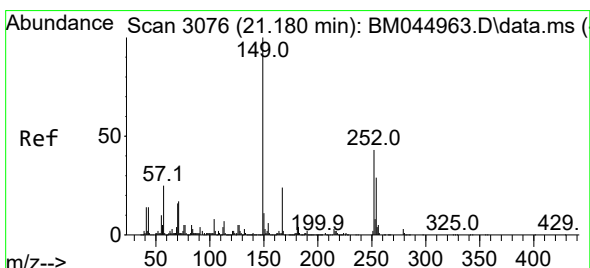
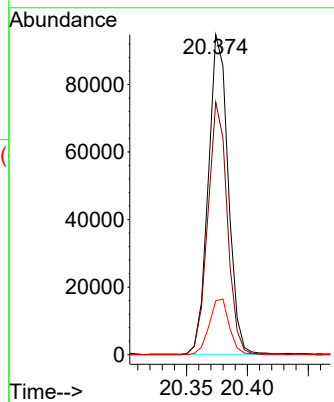
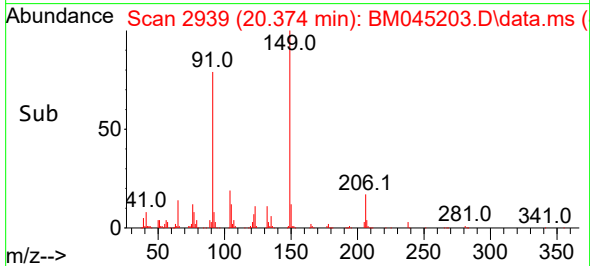
BNA_M

ClientSampleId :

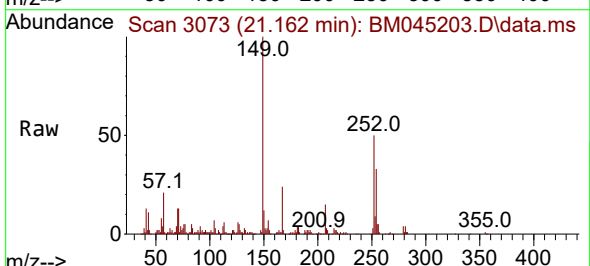
SSTD020099



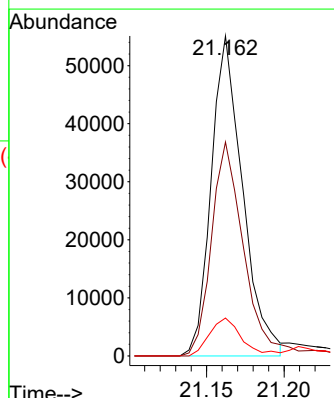
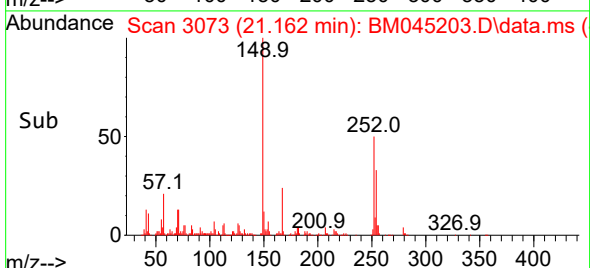
Tgt Ion:149 Resp: 107509
 Ion Ratio Lower Upper
 149 100
 91 79.0 56.2 84.4
 206 16.9 14.3 21.5

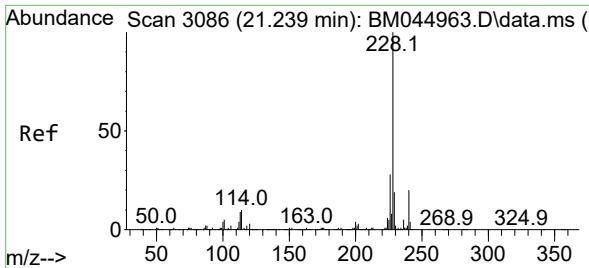


#84
 3,3'-Dichlorobenzidine
 Concen: 16.815 ng/ul
 RT: 21.162 min Scan# 3073
 Delta R.T. -0.006 min
 Lab File: BM045203.D
 Acq: 13 Apr 2024 12:19



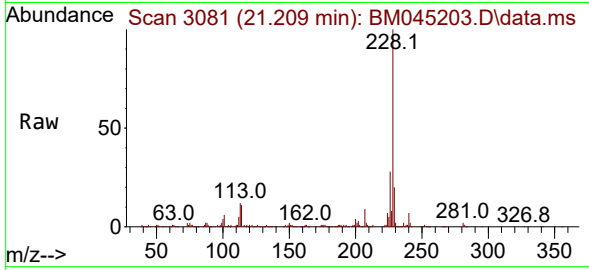
Tgt Ion:252 Resp: 77625
 Ion Ratio Lower Upper
 252 100
 254 66.8 53.9 80.9
 126 11.8 9.0 13.4





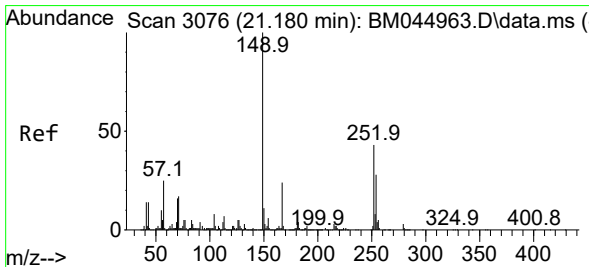
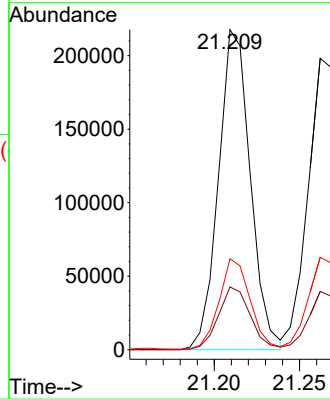
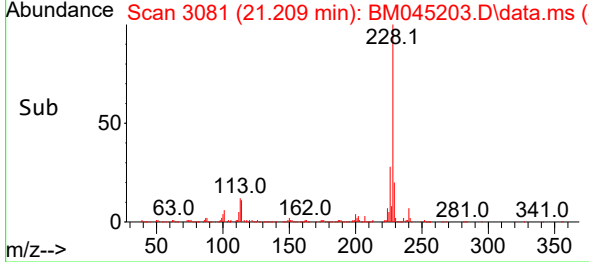
#85
 Benzo(a)anthracene
 Concen: 20.049 ng/ul
 RT: 21.209 min Scan# 3081
 Delta R.T. -0.012 min
 Lab File: BM045203.D
 Acq: 13 Apr 2024 12:19

Instrument : BNA_M
 ClientSampleId : SSTD020099

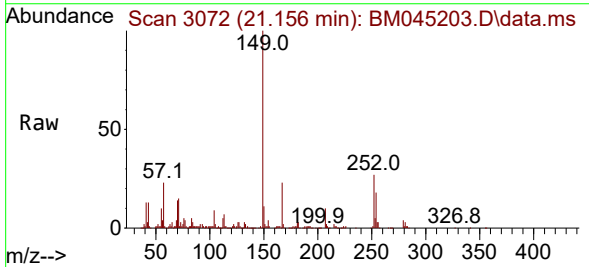


Tgt Ion:228 Resp: 282444

Ion	Ratio	Lower	Upper
228	100		
229	19.6	15.5	23.3
226	28.4	21.8	32.6

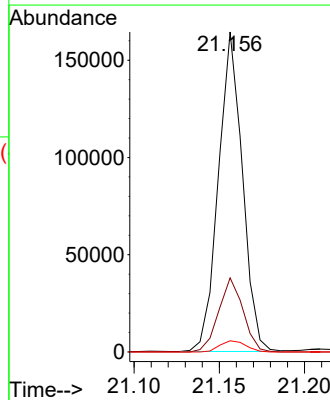
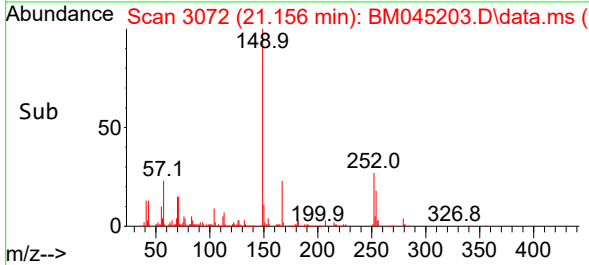


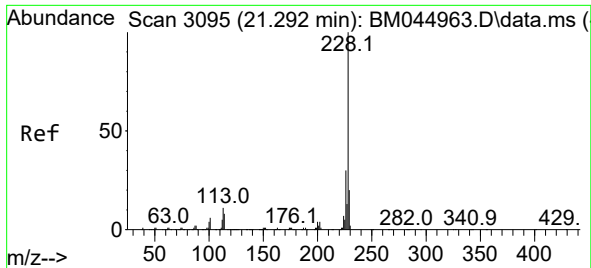
#86
 Bis(2-ethylhexyl)phthalate
 Concen: 18.923 ng/ul
 RT: 21.156 min Scan# 3072
 Delta R.T. -0.006 min
 Lab File: BM045203.D
 Acq: 13 Apr 2024 12:19



Tgt Ion:149 Resp: 161252

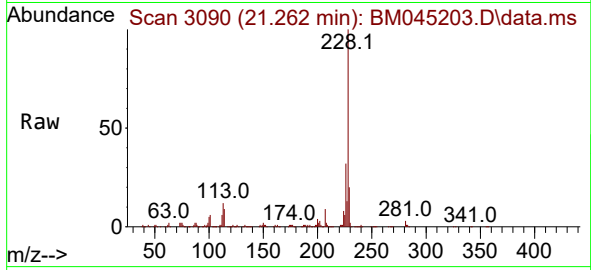
Ion	Ratio	Lower	Upper
149	100		
167	23.2	19.7	29.5
279	3.5	3.3	4.9



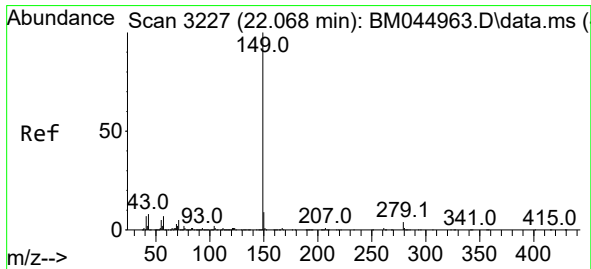
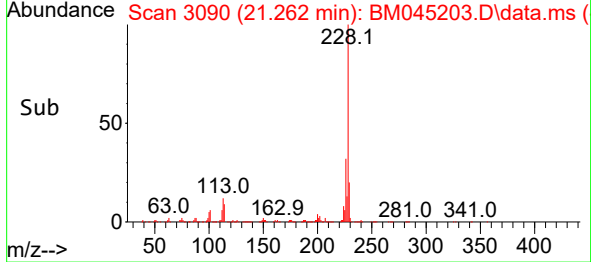
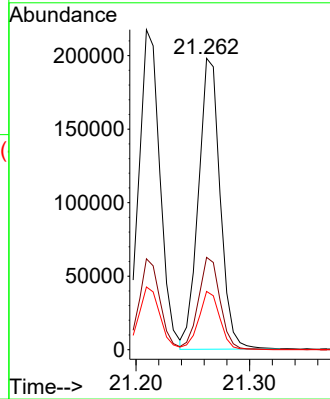


#87
 Chrysene
 Concen: 20.040 ng/ul
 RT: 21.262 min Scan# 3090
 Delta R.T. -0.012 min
 Lab File: BM045203.D
 Acq: 13 Apr 2024 12:19

Instrument :
 BNA_M
 ClientSampleId :
 SSTD020099

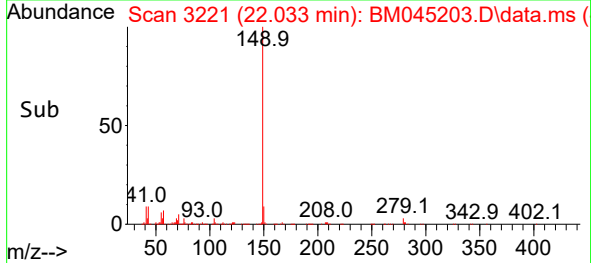
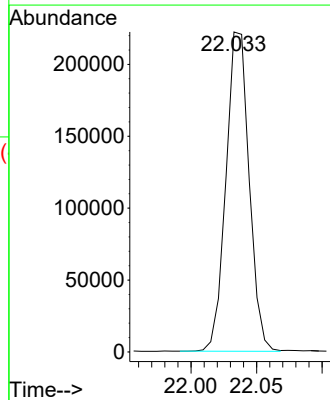
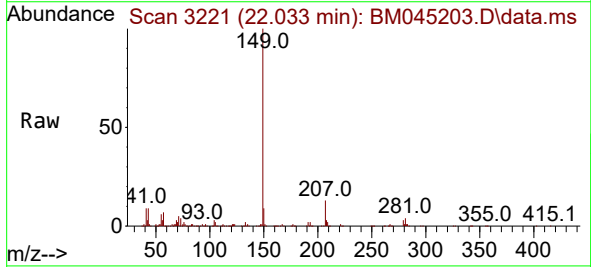


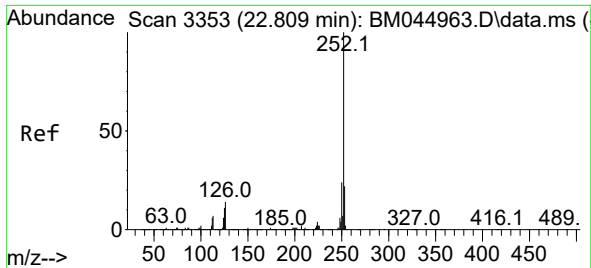
Tgt Ion:228 Resp: 263181
 Ion Ratio Lower Upper
 228 100
 226 31.7 24.3 36.5
 229 20.0 15.7 23.5



#89
 Di-n-octyl phthalate
 Concen: 17.380 ng/ul
 RT: 22.033 min Scan# 3221
 Delta R.T. -0.012 min
 Lab File: BM045203.D
 Acq: 13 Apr 2024 12:19

Tgt Ion:149 Resp: 273030

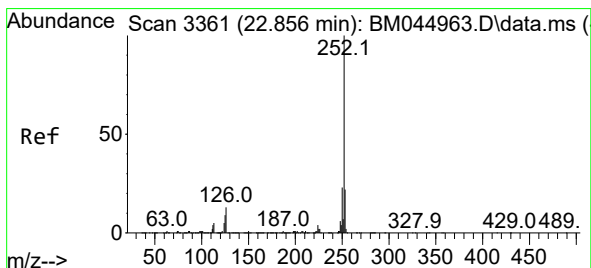
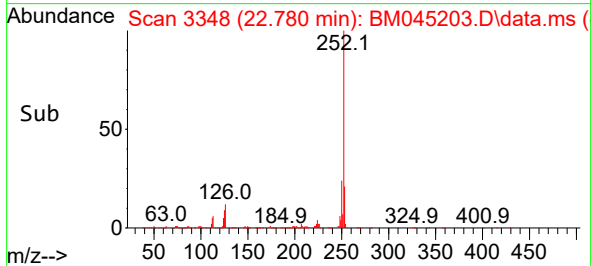
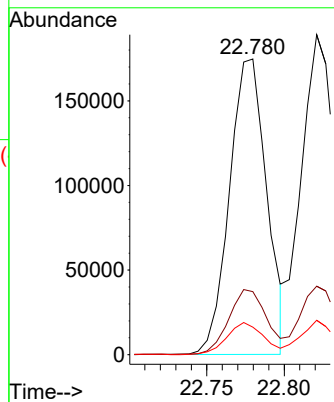
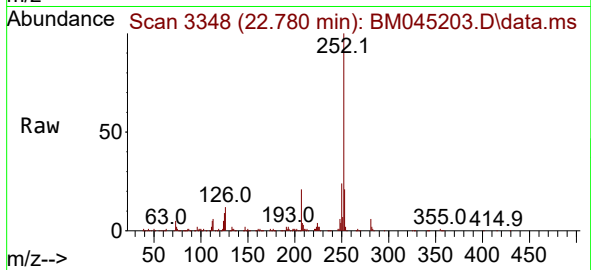




#90
 Benzo(b)fluoranthene
 Concen: 20.057 ng/u1
 RT: 22.780 min Scan# 31
 Delta R.T. -0.006 min
 Lab File: BM045203.D
 Acq: 13 Apr 2024 12:19

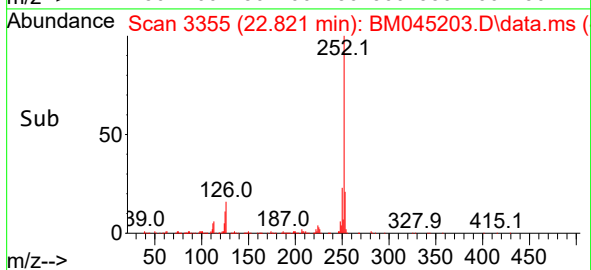
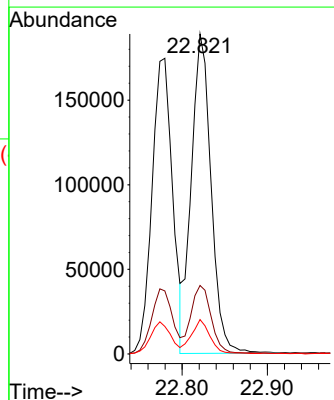
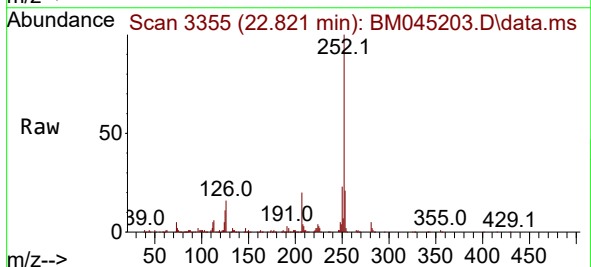
Instrument :
 BNA_M
 ClientSampleId :
 SSTD020099

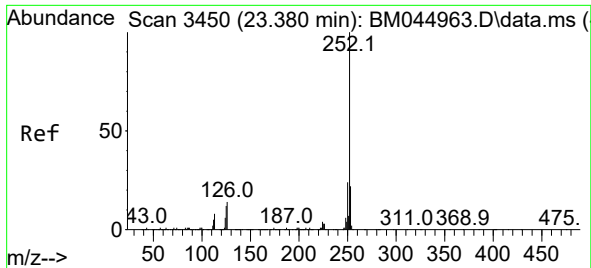
Tgt Ion:252 Resp: 291873
 Ion Ratio Lower Upper
 252 100
 253 21.3 18.0 27.0
 125 9.3 8.2 12.4



#91
 Benzo(k)fluoranthene
 Concen: 20.725 ng/u1
 RT: 22.821 min Scan# 3355
 Delta R.T. -0.012 min
 Lab File: BM045203.D
 Acq: 13 Apr 2024 12:19

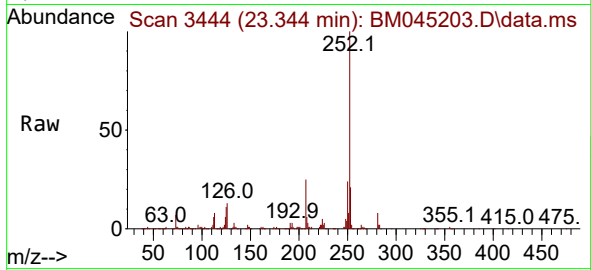
Tgt Ion:252 Resp: 303556
 Ion Ratio Lower Upper
 252 100
 253 21.4 17.5 26.3
 125 10.7 8.5 12.7





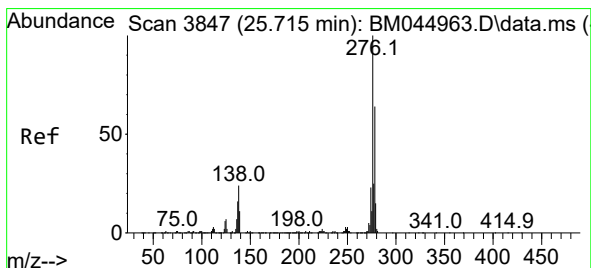
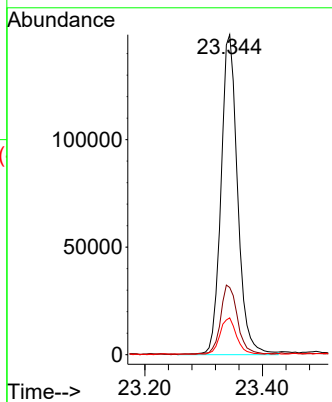
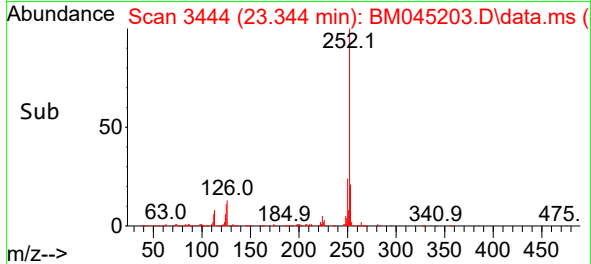
#93
 Benzo(a)pyrene
 Concen: 20.593 ng/u1
 RT: 23.344 min Scan# 3444
 Delta R.T. -0.012 min
 Lab File: BM045203.D
 Acq: 13 Apr 2024 12:19

Instrument : BNA_M
 ClientSampleId : SSTD020099



Tgt Ion:252 Resp: 291651

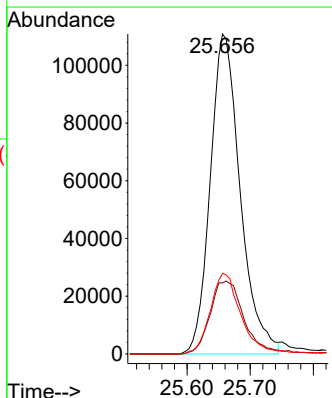
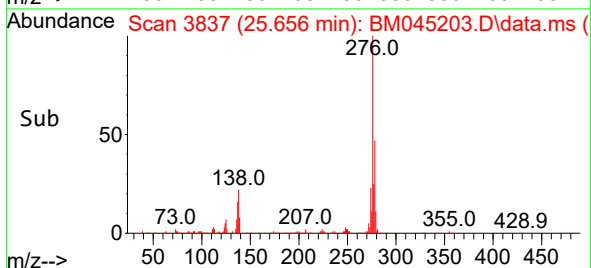
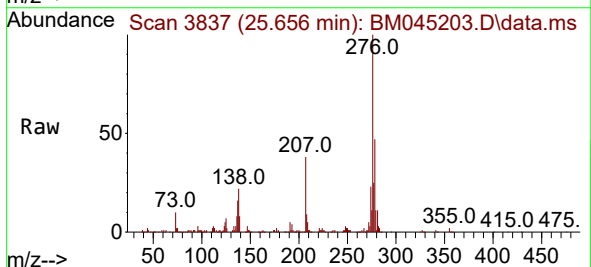
Ion	Ratio	Lower	Upper
252	100		
253	21.0	17.6	26.4
125	11.5	8.8	13.2

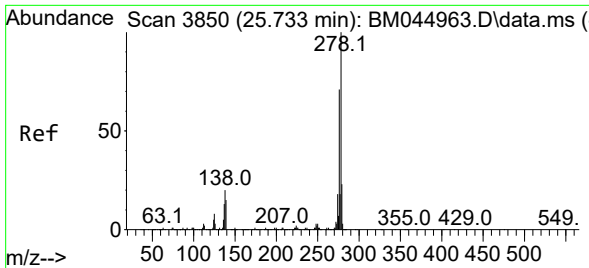


#94
 Indeno(1,2,3-cd)pyrene
 Concen: 19.924 ng/u1
 RT: 25.656 min Scan# 3837
 Delta R.T. -0.018 min
 Lab File: BM045203.D
 Acq: 13 Apr 2024 12:19

Tgt Ion:276 Resp: 365511

Ion	Ratio	Lower	Upper
276	100		
138	22.2	19.0	28.6
277	25.2	19.9	29.9

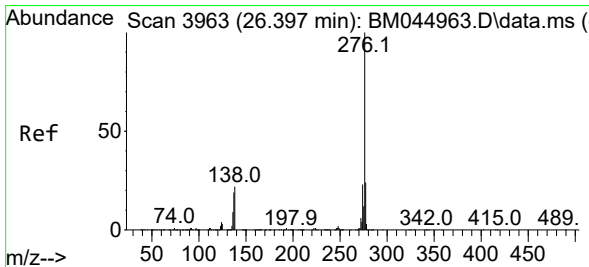
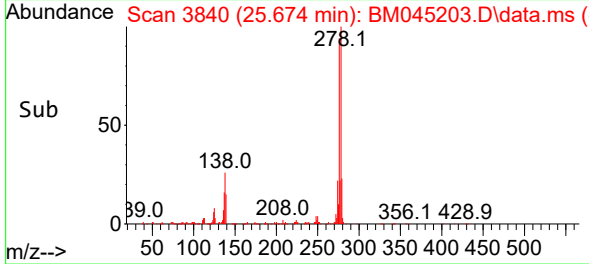
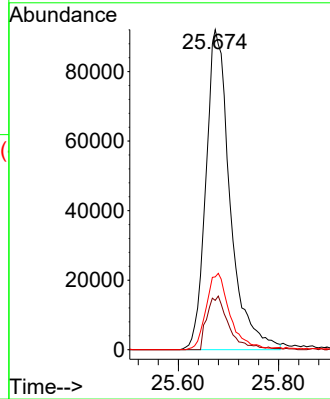
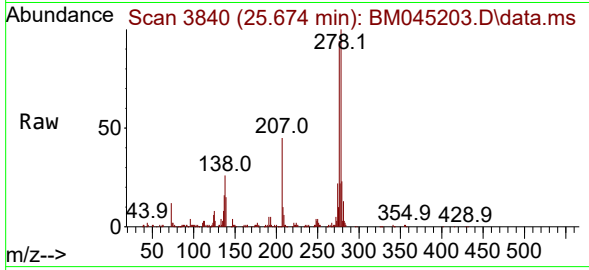




#95
 Dibenzo(a,h)anthracene
 Concen: 20.074 ng/ul
 RT: 25.674 min Scan# 3850
 Delta R.T. -0.012 min
 Lab File: BM045203.D
 Acq: 13 Apr 2024 12:19

Instrument :
 BNA_M
 ClientSampleId :
 SSTD020099

Tgt Ion:278 Resp: 307903
 Ion Ratio Lower Upper
 278 100
 139 15.4 11.9 17.9
 279 22.8 19.4 29.2



#96
 Benzo(g,h,i)perylene
 Concen: 21.613 ng/ul
 RT: 26.338 min Scan# 3953
 Delta R.T. -0.012 min
 Lab File: BM045203.D
 Acq: 13 Apr 2024 12:19

Tgt Ion:276 Resp: 312798
 Ion Ratio Lower Upper
 276 100
 138 21.5 17.8 26.6
 277 23.6 18.7 28.1

