

Data Path : Z:\svoasrv\HPCHEM1\BNA_M\Data\BM042122\
 Data File : BM034735.D
 Acq On : 20 Apr 2022 21:59
 Operator : CG/JU
 Sample : SSTD16030
 Misc :
 ALS Vial : 7 Sample Multiplier: 1

Instrument :
 BNA_M
 ClientSampleId :
 SSTD160030

Quant Time: Apr 21 03:34:26 2022
 Quant Method : Z:\svoasrv\HPCHEM1\BNA_M\Methods\SFAM-EPA-BM042122.M
 Quant Title : SVOA CALIBRATION
 QLast Update : Thu Apr 21 03:29:13 2022
 Response via : Initial Calibration

Compound	R.T.	QIon	Response	Conc	Units	Dev(Min)
Internal Standards						
1) 1,4-Dichlorobenzene-d4	7.951	152	223787	20.000	ng/ul	0.00
20) Naphthalene-d8	10.757	136	785683	20.000	ng/ul	# 0.00
38) Acenaphthene-d10	14.580	164	505711	20.000	ng/ul	0.00
64) Phenanthrene-d10	17.427	188	8178016	20.000	ng/ul	0.11
79) Chrysene-d12	21.503	240	1123772	20.000	ng/ul	# 0.00
88) Perylene-d12	23.903	264	1185691	20.000	ng/ul	0.01
System Monitoring Compounds						
3) 1,4-Dioxane-d8	3.381	96	296187	56.936	ng/uL	0.00
4) Pyridine-d5	3.793	84	1970890	161.467	ng/ul	0.00
7) Phenol-d5	7.122	99	2639671	161.091	ng/ul	0.02
9) Bis-(2-Chloroethyl)eth...	7.287	67	1340383	145.457	ng/ul	0.01
11) 2-Chlorophenol-d4	7.487	132	2332630	164.626	ng/ul	0.00
15) 4-Methylphenol-d8	8.669	113	2139342	160.968	ng/ul	0.01
21) Nitrobenzene-d5	9.116	128	1042437	195.069	ng/ul	0.01
24) 2-Nitrophenol-d4	9.839	143	1241408	227.803	ng/ul	0.01
28) 2,4-Dichlorophenol-d3	10.381	165	2324816	179.285	ng/ul	0.01
31) 4-Chloroaniline-d4	10.892	131	2755517	162.568	ng/ul	0.01
46) Dimethylphthalate-d6	14.004	166	6138513	161.961	ng/ul	0.01
49) Acenaphthylene-d8	14.280	160	7634341	157.826	ng/ul	0.00
54) 4-Nitrophenol-d4	14.786	143	1102115	188.428	ng/ul	0.03
60) Fluorene-d10	15.580	176	5230634	159.072	ng/ul	0.01
65) 4,6-Dinitro-2-methylph...	15.698	200	1217222	29.064	ng/ul	0.02
73) Anthracene-d10	17.427	188	8179646	20.463	ng/ul	0.01
81) Pyrene-d10	19.715	212	9523991	158.695	ng/ul	0.01
92) Benzo(a)pyrene-d12	23.762	264	9896012	162.456	ng/ul	0.02
Target Compounds						
2) 1,4-Dioxane	3.416	88	292054	55.223	ng/uL	91
5) Pyridine	3.816	79	2014895	159.308	ng/ul	90
6) Benzaldehyde	7.087	77	1207395	140.749	ng/ul	92
8) Phenol	7.151	94	2573573	159.156	ng/ul	98
10) Bis(2-Chloroethyl)ether	7.381	93	1898700	149.343	ng/ul	93
12) 2-Chlorophenol	7.522	128	2319411	161.851	ng/ul	94
13) 2-Methylphenol	8.398	108	1960004	157.495	ng/ul	97
14) 2,2'-oxybis(1-Chloropr...	8.492	45	2169546	130.270	ng/ul#	91
16) Acetophenone	8.787	105	3156951	157.449	ng/ul	94
17) N-Nitroso-di-n-propyla...	8.792	70	1482913	156.374	ng/ul	90
18) 4-Methylphenol	8.745	108	2121469	159.551	ng/ul	100
19) Hexachloroethane	9.040	117	888269	149.428	ng/ul#	77
22) Nitrobenzene	9.163	77	2047262	169.264	ng/ul	92
23) Isophorone	9.710	82	3872990	164.895	ng/ul	96
25) 2-Nitrophenol	9.875	139	1251372	206.172	ng/ul	93
26) 2,4-Dimethylphenol	9.939	107	2272285	167.110	ng/ul	97
27) Bis(2-Chloroethoxy)met...	10.175	93	2306154	156.062	ng/ul	98
29) 2,4-Dichlorophenol	10.410	162	2202995	177.364	ng/ul	98
30) Naphthalene	10.810	128	6361963	157.463	ng/ul	100
32) 4-Chloroaniline	10.922	127	2712113	162.160	ng/ul	98
33) Hexachlorobutadiene	11.104	225	1705705	182.698	ng/ul	98
34) Caprolactam	11.733	113	291949	98.216	ng/ul#	77
35) 4-Chloro-3-methylphenol	12.051	107	2006778	173.088	ng/ul	98
36) 2-Methylnaphthalene	12.416	142	4507041	160.236	ng/ul	99

Data Path : Z:\svoasrv\HPCHEM1\BNA_M\Data\BM042122\
 Data File : BM034735.D
 Acq On : 20 Apr 2022 21:59
 Operator : CG/JU
 Sample : SSTD16030
 Misc :
 ALS Vial : 7 Sample Multiplier: 1

Instrument :
 BNA_M
 ClientSampleId :
 SSTD160030

Quant Time: Apr 21 03:34:26 2022
 Quant Method : Z:\svoasrv\HPCHEM1\BNA_M\Methods\SFAM-EPA-BM042122.M
 Quant Title : SVOA CALIBRATION
 QLast Update : Thu Apr 21 03:29:13 2022
 Response via : Initial Calibration

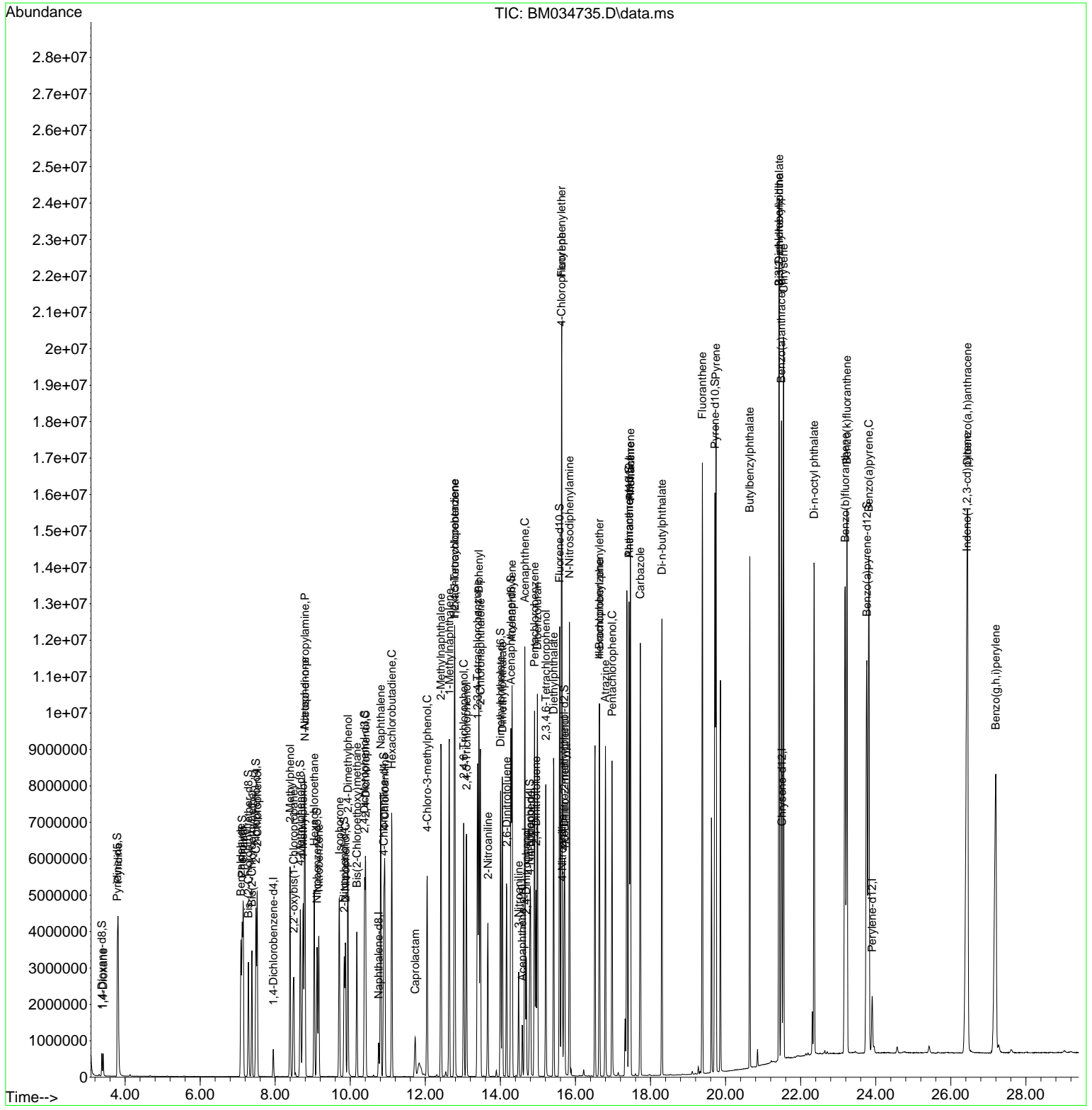
Compound	R.T.	QIon	Response	Conc	Units	Dev(Min)
37) 1-Methylnaphthalene	12.639	142	4508169	158.827	ng/ul	98
39) 1,2,4,5-Tetrachloroben...	12.786	216	2952697	162.895	ng/ul#	96
40) Hexachlorocyclopentadiene	12.775	237	2176710	174.665	ng/ul	98
41) 2,4,6-Trichlorophenol	13.022	196	1857753	174.088	ng/ul	97
42) 2,4,5-Trichlorophenol	13.098	196	1984509	176.347	ng/ul	100
43) 1,1'-Biphenyl	13.427	154	6002061	142.596	ng/ul	98
44) 2-Chloronaphthalene	13.469	162	4797170	146.530	ng/ul	98
45) 2-Nitroaniline	13.669	65	1110451	181.739	ng/ul#	83
47) Dimethylphthalate	14.051	163	5847396	160.314	ng/ul	99
48) 2,6-Dinitrotoluene	14.169	165	1280815	212.184	ng/ul	87
50) Acenaphthylene	14.310	152	7469196	156.769	ng/ul	97
51) 3-Nitroaniline	14.486	138	787982	152.218	ng/ul#	95
52) Acenaphthene	14.651	153	4915685	157.569	ng/ul	99
53) 2,4-Dinitrophenol	14.692	184	855529	253.396	ng/ul#	80
55) 4-Nitrophenol	14.804	109	778143	174.620	ng/ul	92
56) Dibenzofuran	14.986	168	7045462	156.097	ng/ul	97
57) 2,4-Dinitrotoluene	14.951	165	1820333	214.412	ng/ul#	83
58) 2,3,4,6-Tetrachlorophenol	15.210	232	1742401	192.289	ng/ul#	85
59) Diethylphthalate	15.416	149	5663433	159.718	ng/ul	95
61) Fluorene	15.633	166	5670018	155.332	ng/ul	99
62) 4-Chlorophenyl-phenyle...	15.627	204	3187912	162.990	ng/ul	92
63) 4-Nitroaniline	15.651	138	591338	124.793	ng/ul	98
66) 4,6-Dinitro-2-methylph...	15.716	198	1185693	27.778	ng/ul#	82
67) N-Nitrosodiphenylamine	15.839	169	4979855	20.316	ng/ul	100
68) 4-Bromophenyl-phenylether	16.639	248	36869	0.384	ng/ul#	1
69) Hexachlorobenzene	16.639	284	2353346	20.829	ng/ul#	88
70) Atrazine	16.798	200	2045502	21.663	ng/ul	96
71) Pentachlorophenol	16.974	266	1616666	23.441	ng/ul	98
72) Phenanthrene	17.462	178	9103770	20.289	ng/ul	97
74) Anthracene	17.462	178	9101868	19.994	ng/ul	97
75) 1,2,3,4-Tetrachloroben...	13.392	216	3035430	20.728	ng/uL	98
76) Pentachlorobenzene	14.910	250	2856763	21.178	ng/uL	99
77) Carbazole	17.727	167	7973020	20.034	ng/ul	98
78) Di-n-butylphthalate	18.304	149	9249346	20.490	ng/ul	98
80) Fluoranthene	19.380	202	10568724	152.718	ng/ul	99
82) Pyrene	19.745	202	10629450	149.574	ng/ul	98
83) Butylbenzylphthalate	20.645	149	4366976	187.810	ng/ul#	91
84) 3,3'-Dichlorobenzidine	21.421	252	3468054	148.989	ng/ul#	98
85) Benzo(a)anthracene	21.486	228	10440701	149.947	ng/ul	95
86) Bis(2-ethylhexyl)phtha...	21.427	149	6695329	180.143	ng/ul#	93
87) Chrysene	21.545	228	10056445	148.534	ng/ul	94
89) Di-n-octyl phthalate	22.356	149	10347398	160.311	ng/ul	100
90) Benzo(b)fluoranthene	23.186	252	11468808	155.342	ng/ul	97
91) Benzo(k)fluoranthene	23.233	252	10936769	157.902	ng/ul	96
93) Benzo(a)pyrene	23.815	252	11400858	159.518	ng/ul#	95
94) Indeno(1,2,3-cd)pyrene	26.427	276	13692237	159.384	ng/ul	97
95) Dibenzo(a,h)anthracene	26.444	278	11718874	158.368	ng/ul	98
96) Benzo(g,h,i)perylene	27.197	276	11587457	157.757	ng/ul	99

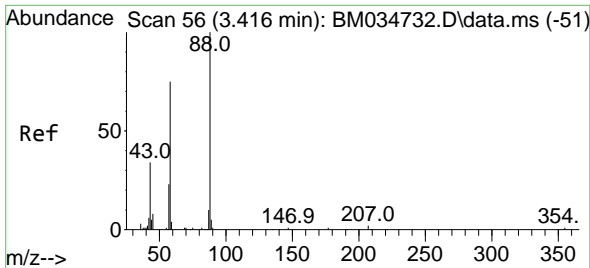
(#) = qualifier out of range (m) = manual integration (+) = signals summed

Data Path : Z:\svoasrv\HPCHEM1\BNA_M\Data\BM042122\
 Data File : BM034735.D
 Acq On : 20 Apr 2022 21:59
 Operator : CG/JU
 Sample : SSTD16030
 Misc :
 ALS Vial : 7 Sample Multiplier: 1

Instrument :
 BNA_M
 ClientSampleId :
 SSTD160030

Quant Time: Apr 21 03:34:26 2022
 Quant Method : Z:\svoasrv\HPCHEM1\BNA_M\Methods\SFAM-EPA-BM042122.M
 Quant Title : SVOA CALIBRATION
 QLast Update : Thu Apr 21 03:29:13 2022
 Response via : Initial Calibration

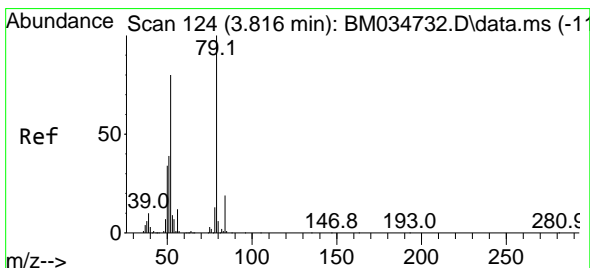
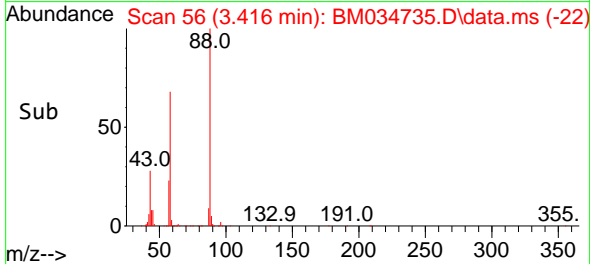
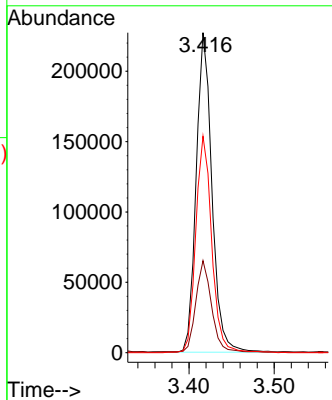
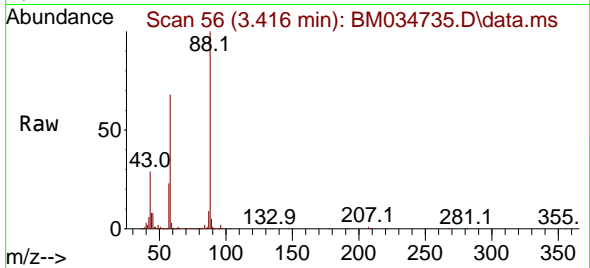




#2
 1,4-Dioxane
 Concen: 55.223 ng/uL
 RT: 3.416 min Scan# 50
 Delta R.T. 0.000 min
 Lab File: BM034735.D
 Acq: 20 Apr 2022 21:59

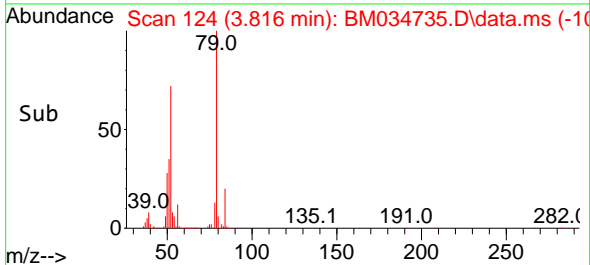
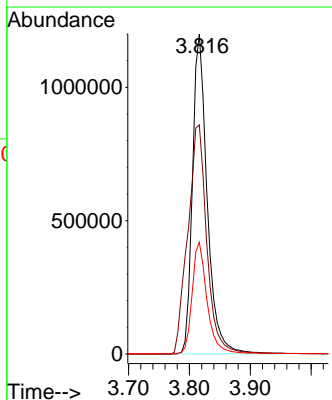
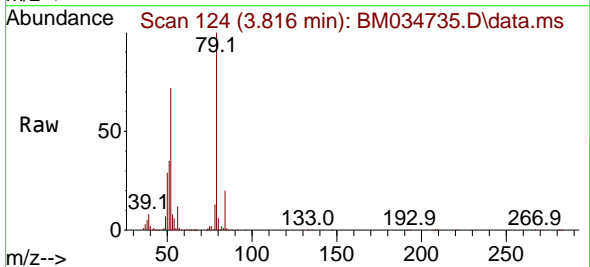
Instrument :
 BNA_M
 ClientSampleId :
 SSTD160030

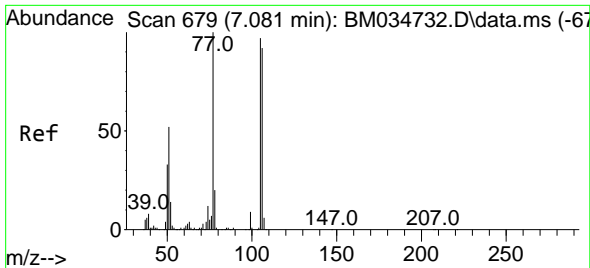
Tgt Ion	Resp	Ion Ratio	Lower	Upper
88	292054	100		
43		28.8	27.6	41.4
58		67.7	59.5	89.3



#5
 Pyridine
 Concen: 159.308 ng/uL
 RT: 3.816 min Scan# 124
 Delta R.T. 0.000 min
 Lab File: BM034735.D
 Acq: 20 Apr 2022 21:59

Tgt Ion	Resp	Ion Ratio	Lower	Upper
79	2014895	100		
52		71.6	64.3	96.5
51		34.9	32.4	48.6





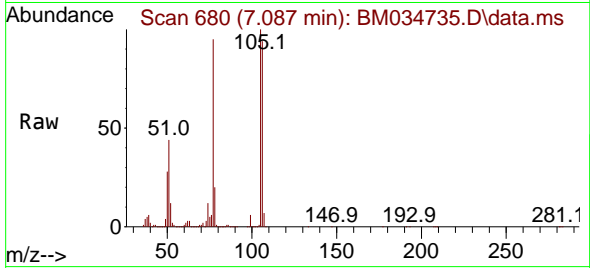
#6
 Benzaldehyde
 Concen: 140.749 ng/ul
 RT: 7.087 min Scan# 610
 Delta R.T. 0.006 min
 Lab File: BM034735.D
 Acq: 20 Apr 2022 21:59

Instrument :

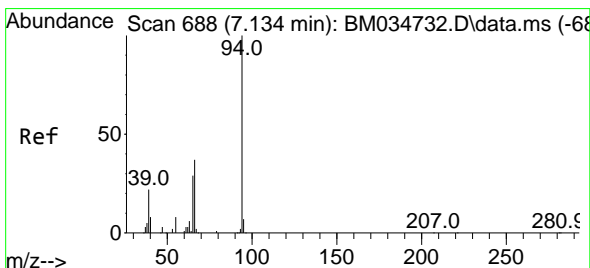
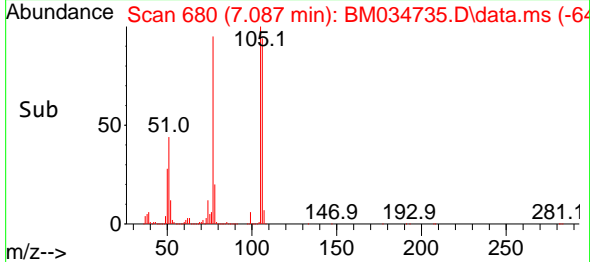
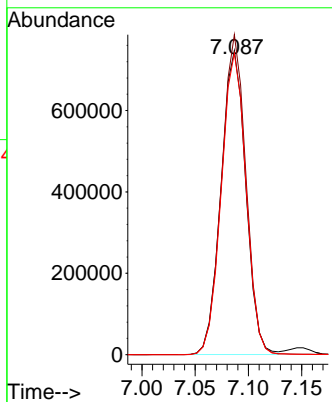
BNA_M

ClientSampleId :

SSTD160030

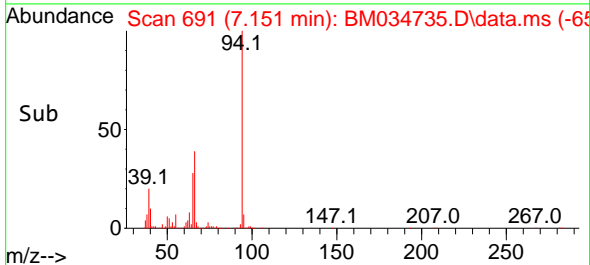
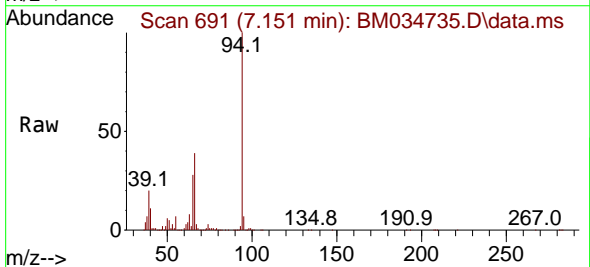
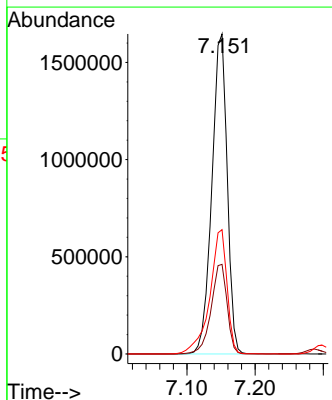


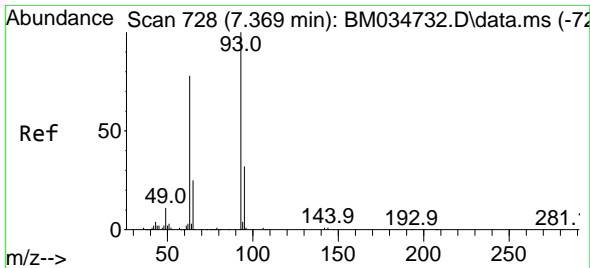
Tgt Ion: 77 Resp: 1207395
 Ion Ratio Lower Upper
 77 100
 105 105.2 77.4 116.0
 106 99.2 73.4 110.2



#8
 Phenol
 Concen: 159.156 ng/ul
 RT: 7.151 min Scan# 691
 Delta R.T. 0.018 min
 Lab File: BM034735.D
 Acq: 20 Apr 2022 21:59

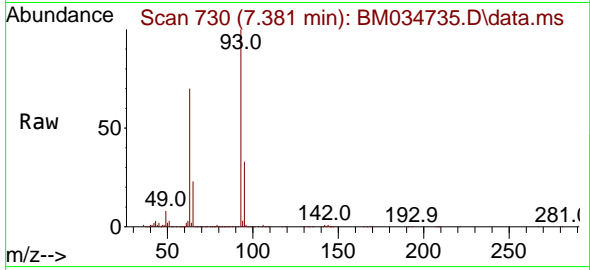
Tgt Ion: 94 Resp: 2573573
 Ion Ratio Lower Upper
 94 100
 65 28.0 23.8 35.6
 66 38.9 31.3 46.9





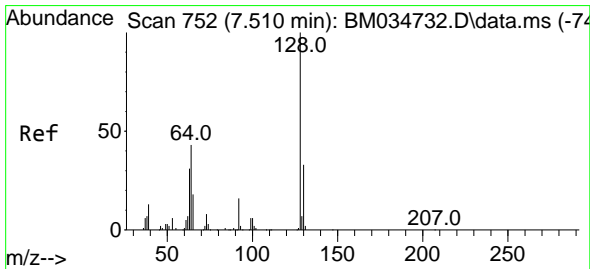
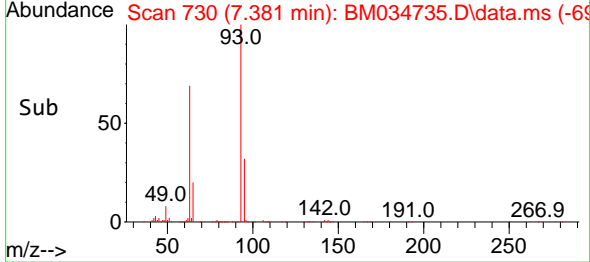
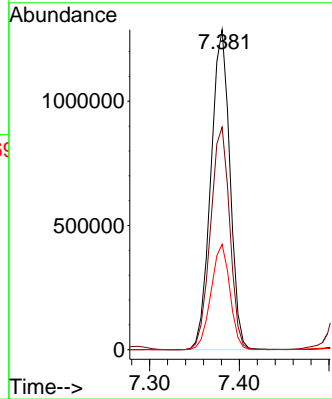
#10
 Bis(2-Chloroethyl)ether
 Concen: 149.343 ng/ul
 RT: 7.381 min Scan# 710
 Delta R.T. 0.012 min
 Lab File: BM034735.D
 Acq: 20 Apr 2022 21:59

Instrument : BNA_M
 ClientSampleId : SSTD160030

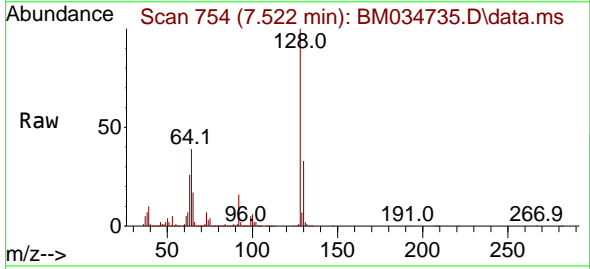


Tgt Ion: 93 Resp: 1898700

Ion	Ratio	Lower	Upper
93	100		
63	69.5	62.5	93.7
95	32.9	25.8	38.8

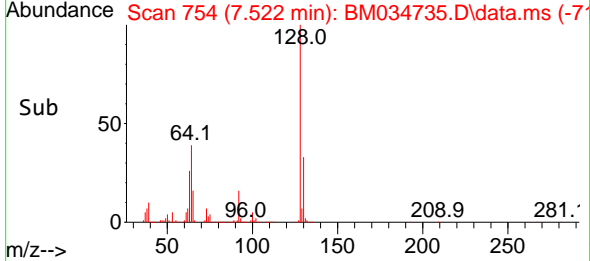
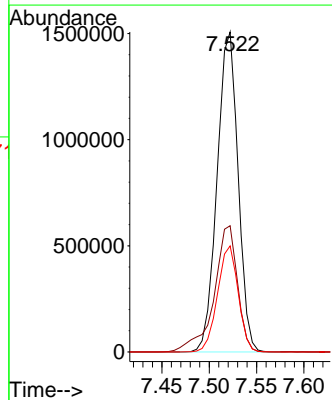


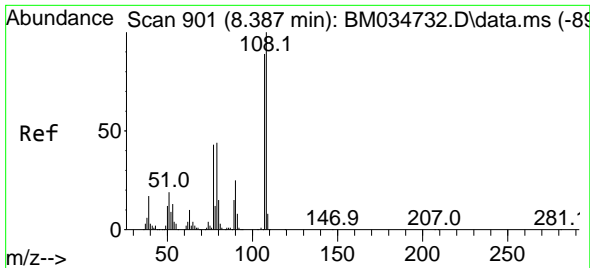
#12
 2-Chlorophenol
 Concen: 161.851 ng/ul
 RT: 7.522 min Scan# 754
 Delta R.T. 0.012 min
 Lab File: BM034735.D
 Acq: 20 Apr 2022 21:59



Tgt Ion: 128 Resp: 2319411

Ion	Ratio	Lower	Upper
128	100		
64	39.5	37.1	55.7
130	33.1	26.2	39.4

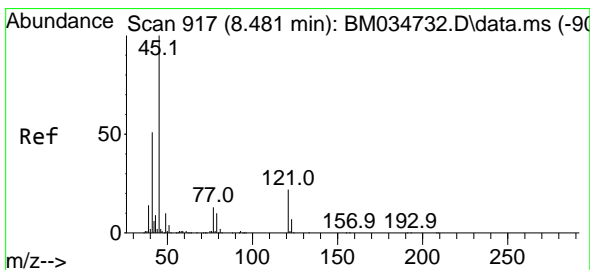
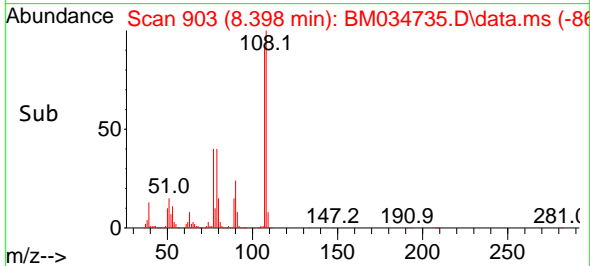
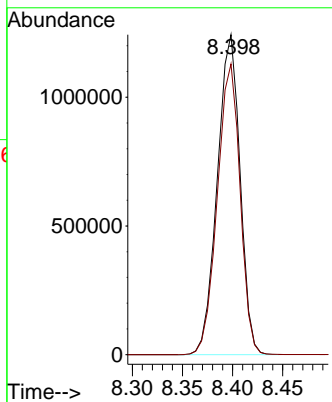
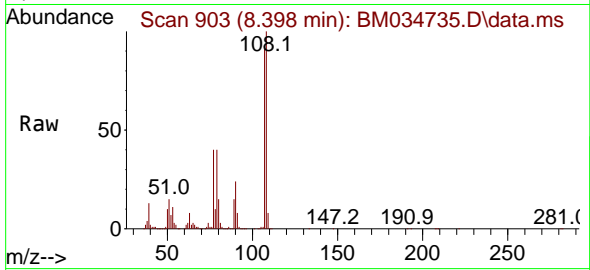




#13
 2-Methylphenol
 Concen: 157.495 ng/ul
 RT: 8.398 min Scan# 903
 Delta R.T. 0.012 min
 Lab File: BM034735.D
 Acq: 20 Apr 2022 21:59

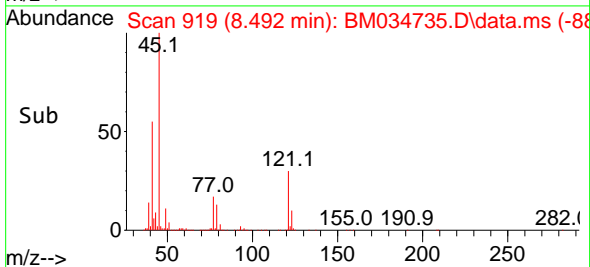
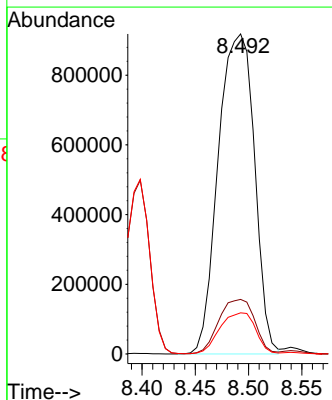
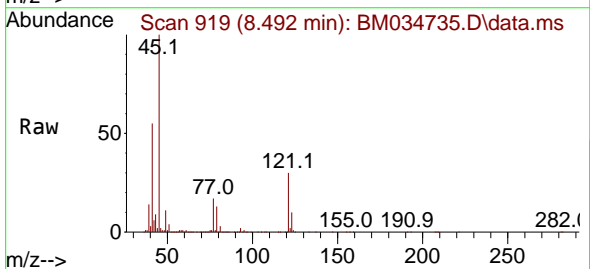
Instrument :
 BNA_M
 ClientSampleId :
 SSTD160030

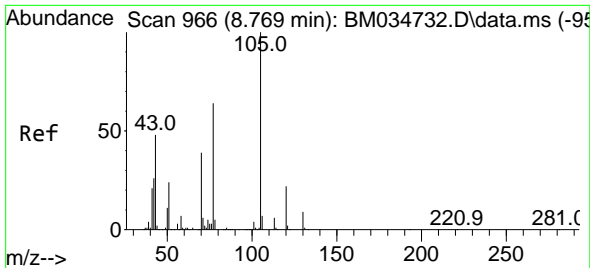
Tgt Ion:108 Resp: 1960004
 Ion Ratio Lower Upper
 108 100
 107 90.9 70.8 106.2



#14
 2,2'-oxybis(1-Chloropropane)
 Concen: 130.270 ng/ul
 RT: 8.492 min Scan# 919
 Delta R.T. 0.012 min
 Lab File: BM034735.D
 Acq: 20 Apr 2022 21:59

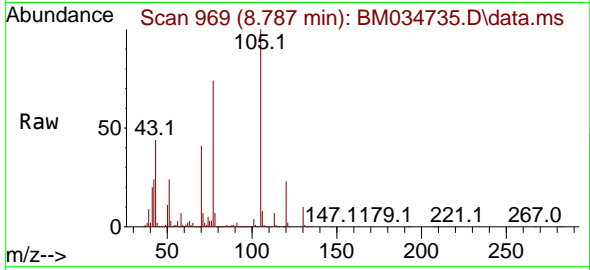
Tgt Ion: 45 Resp: 2169546
 Ion Ratio Lower Upper
 45 100
 77 17.1 10.6 15.8#
 79 12.9 8.1 12.1#



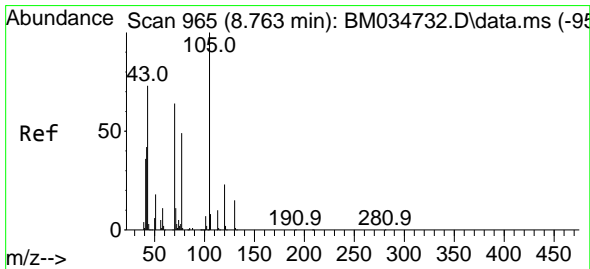
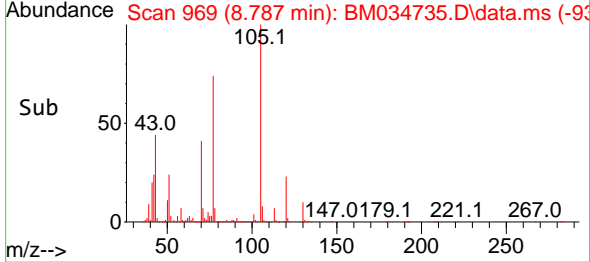
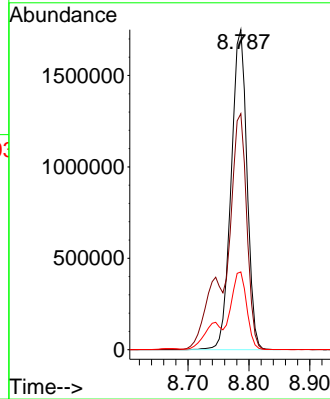


#16
 Acetophenone
 Concen: 157.449 ng/ul
 RT: 8.787 min Scan# 90
 Delta R.T. 0.018 min
 Lab File: BM034735.D
 Acq: 20 Apr 2022 21:59

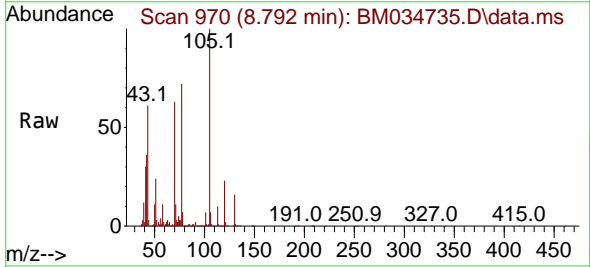
Instrument :
 BNA_M
 ClientSampleId :
 SSTD160030



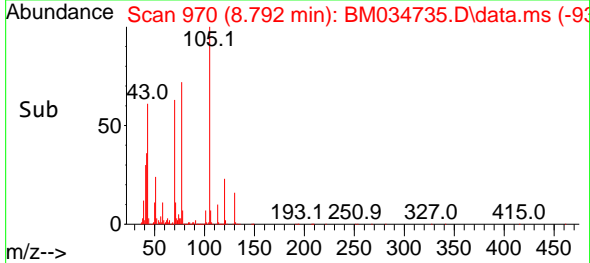
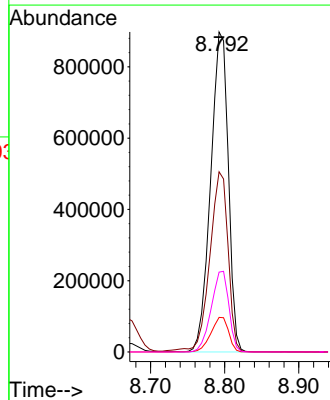
Tgt Ion:105 Resp: 3156951
 Ion Ratio Lower Upper
 105 100
 77 73.7 62.4 93.6
 51 24.3 23.8 35.6

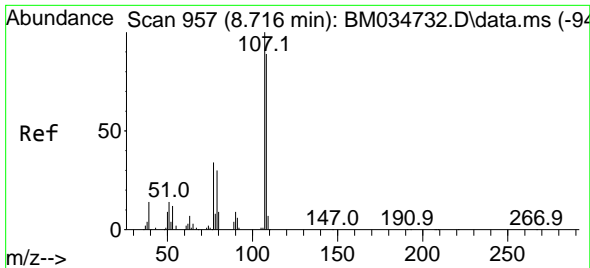


#17
 N-Nitroso-di-n-propylamine
 Concen: 156.374 ng/ul
 RT: 8.792 min Scan# 970
 Delta R.T. 0.029 min
 Lab File: BM034735.D
 Acq: 20 Apr 2022 21:59



Tgt Ion: 70 Resp: 1482913
 Ion Ratio Lower Upper
 70 100
 42 56.3 53.3 79.9
 101 10.8 8.2 12.4
 130 25.0 18.3 27.5

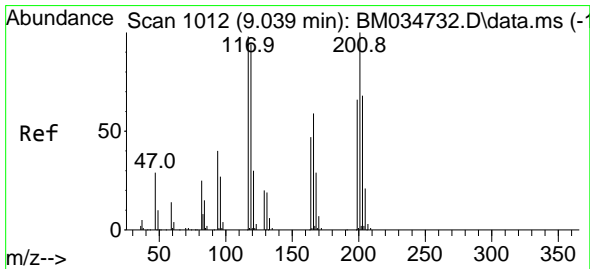
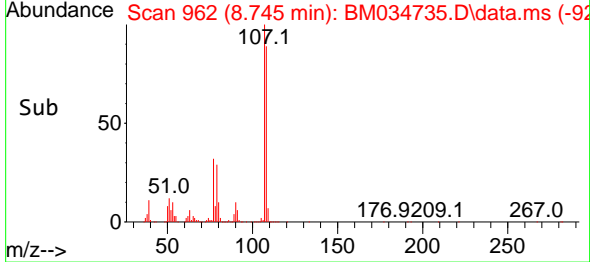
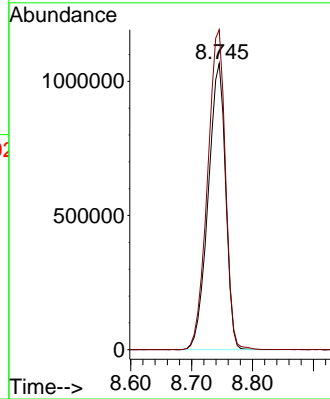
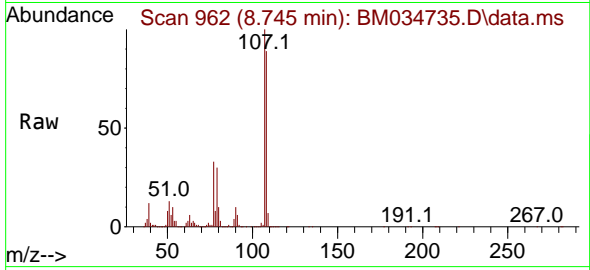




#18
 4-Methylphenol
 Concen: 159.551 ng/ul
 RT: 8.745 min Scan# 90
 Delta R.T. 0.029 min
 Lab File: BM034735.D
 Acq: 20 Apr 2022 21:59

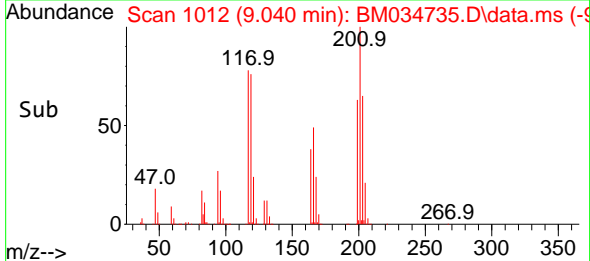
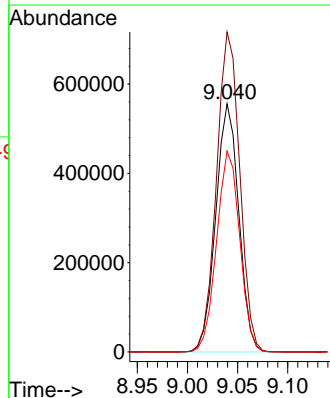
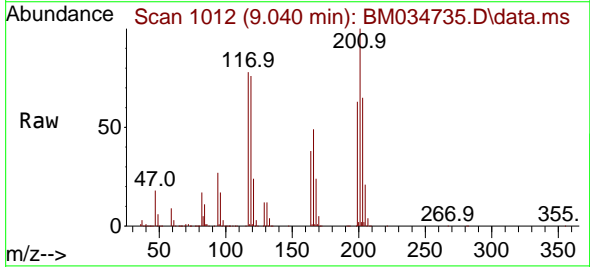
Instrument :
 BNA_M
 ClientSampleId :
 SSTD160030

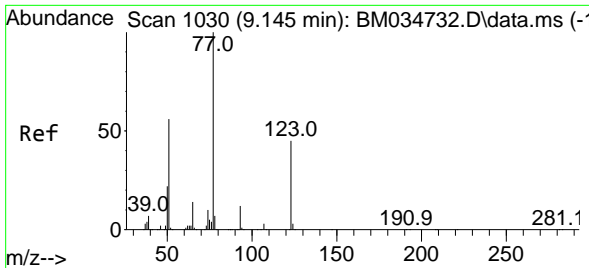
Tgt Ion:108 Resp: 2121469
 Ion Ratio Lower Upper
 108 100
 107 111.8 89.7 134.5



#19
 Hexachloroethane
 Concen: 149.428 ng/ul
 RT: 9.040 min Scan# 1012
 Delta R.T. 0.000 min
 Lab File: BM034735.D
 Acq: 20 Apr 2022 21:59

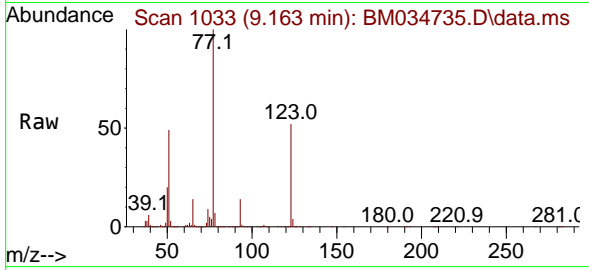
Tgt Ion:117 Resp: 888269
 Ion Ratio Lower Upper
 117 100
 201 128.9 81.3 121.9#
 199 80.9 53.4 80.0#





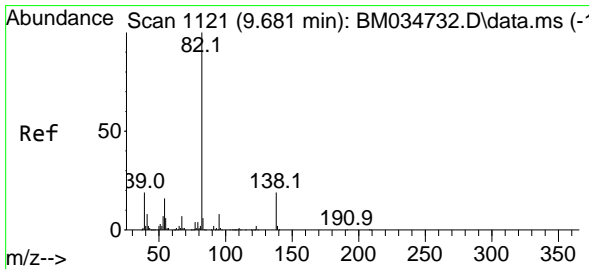
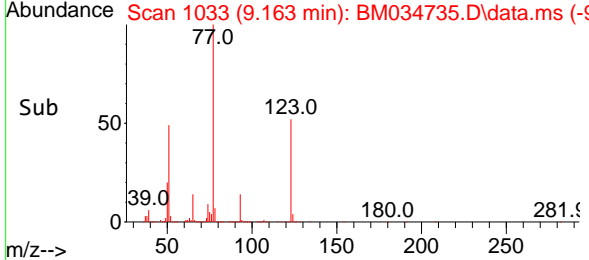
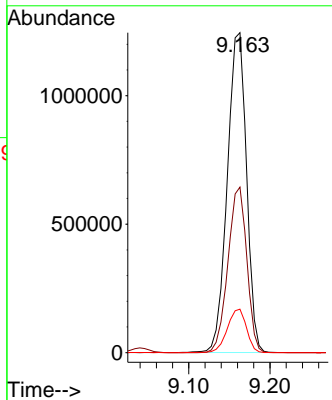
#22
 Nitrobenzene
 Concen: 169.264 ng/uI
 RT: 9.163 min Scan# 1033
 Delta R.T. 0.018 min
 Lab File: BM034735.D
 Acq: 20 Apr 2022 21:59

Instrument : BNA_M
 ClientSampleId : SSTD160030



Tgt Ion: 77 Resp: 2047262

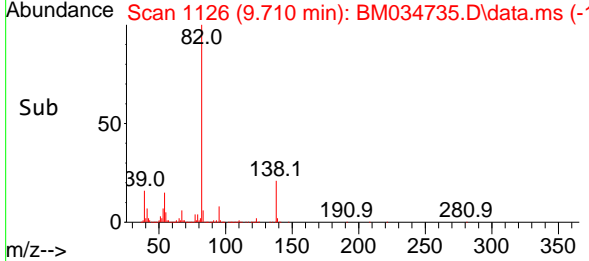
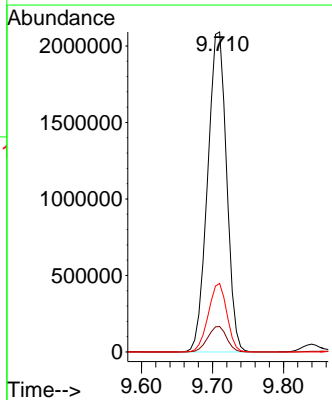
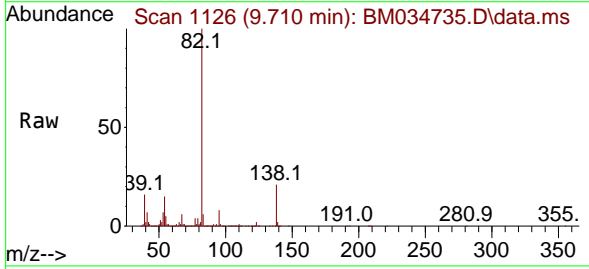
Ion	Ratio	Lower	Upper
77	100		
123	51.8	36.1	54.1
65	13.6	11.0	16.6

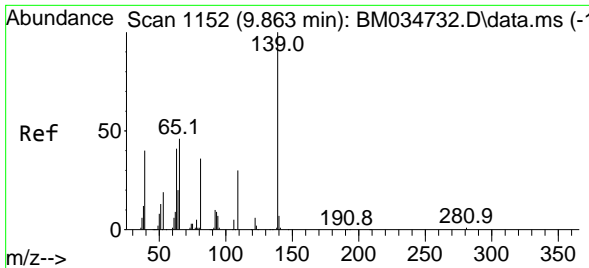


#23
 Isophorone
 Concen: 164.895 ng/uI
 RT: 9.710 min Scan# 1126
 Delta R.T. 0.029 min
 Lab File: BM034735.D
 Acq: 20 Apr 2022 21:59

Tgt Ion: 82 Resp: 3872990

Ion	Ratio	Lower	Upper
82	100		
95	8.0	6.2	9.4
138	21.4	15.3	22.9

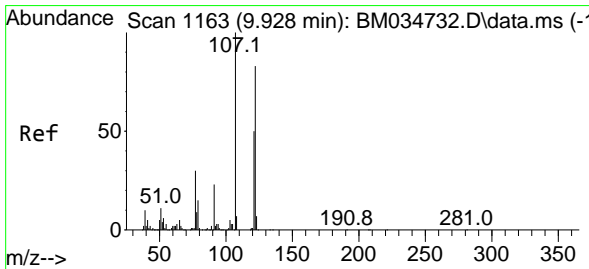
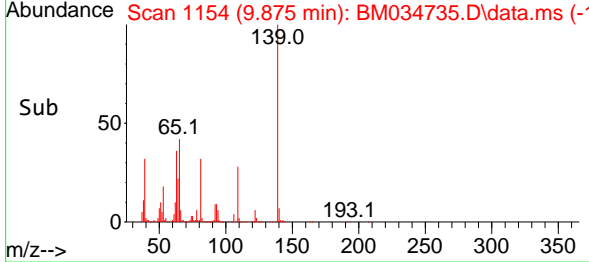
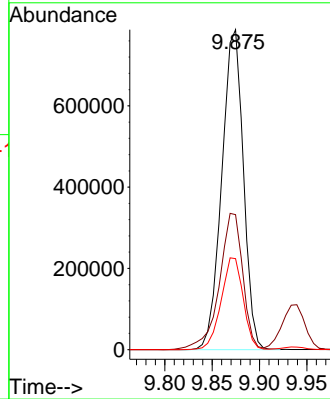
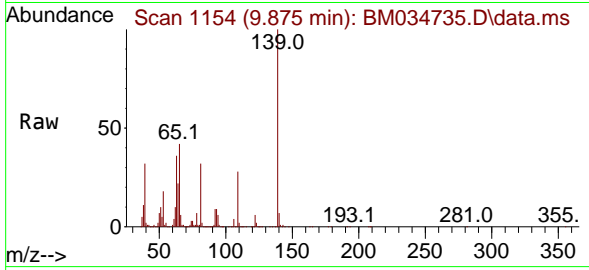




#25
 2-Nitrophenol
 Concen: 206.172 ng/ul
 RT: 9.875 min Scan# 1154
 Delta R.T. 0.012 min
 Lab File: BM034735.D
 Acq: 20 Apr 2022 21:59

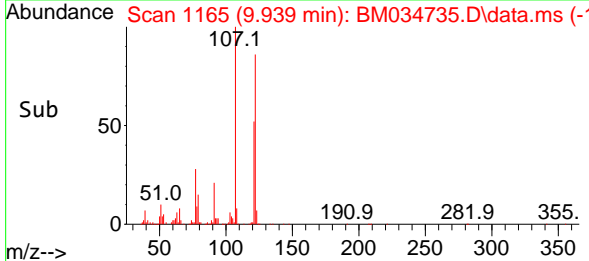
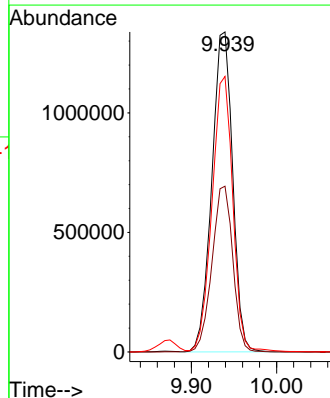
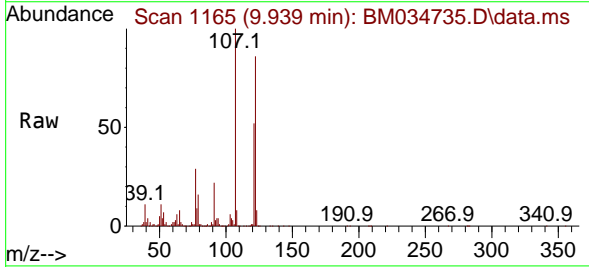
Instrument :
 BNA_M
 ClientSampleId :
 SSTD160030

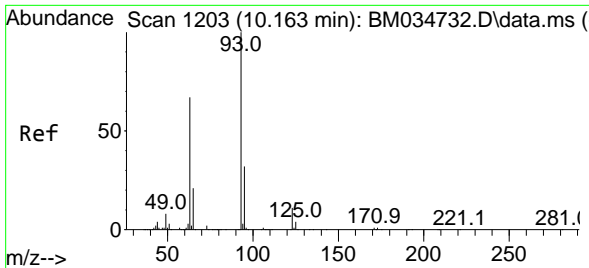
Tgt Ion:139 Resp: 1251372
 Ion Ratio Lower Upper
 139 100
 65 42.2 38.9 58.3
 109 28.5 24.1 36.1



#26
 2,4-Dimethylphenol
 Concen: 167.110 ng/ul
 RT: 9.939 min Scan# 1165
 Delta R.T. 0.012 min
 Lab File: BM034735.D
 Acq: 20 Apr 2022 21:59

Tgt Ion:107 Resp: 2272285
 Ion Ratio Lower Upper
 107 100
 121 51.8 40.3 60.5
 122 86.1 66.6 100.0



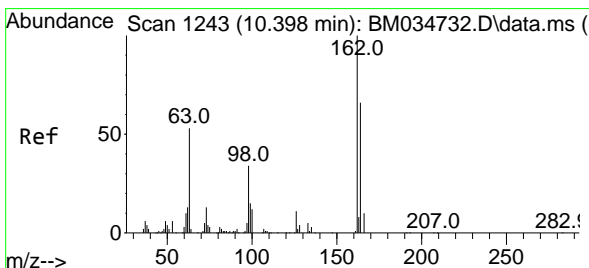
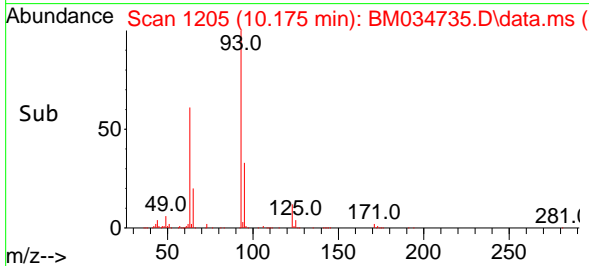
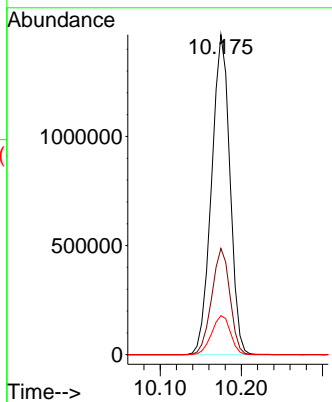
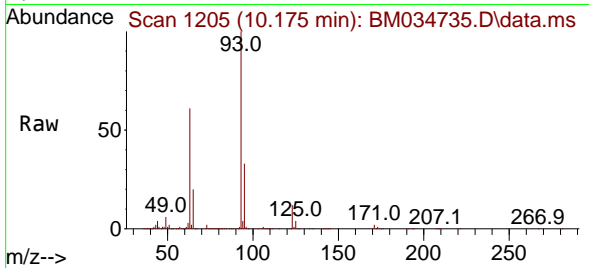


#27
 Bis(2-Chloroethoxy)methane
 Concen: 156.062 ng/ul
 RT: 10.175 min Scan# 11
 Delta R.T. 0.012 min
 Lab File: BM034735.D
 Acq: 20 Apr 2022 21:59

Instrument : BNA_M
 ClientSampleId : SSTD160030

Tgt Ion: 93 Resp: 2306154

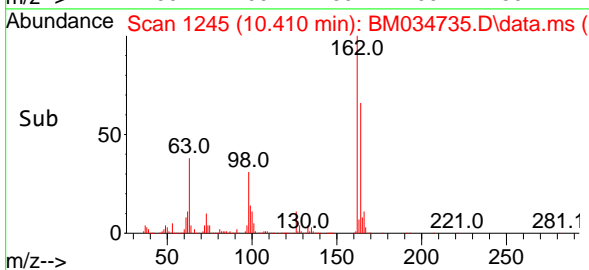
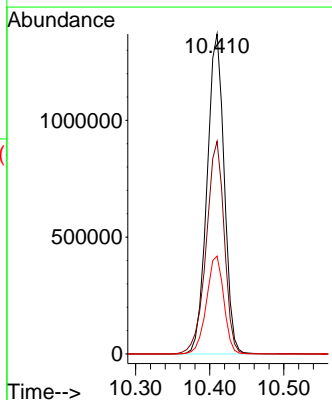
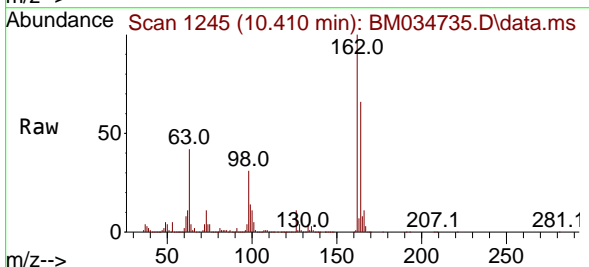
Ion	Ratio	Lower	Upper
93	100		
95	33.2	25.8	38.6
123	12.2	9.2	13.8

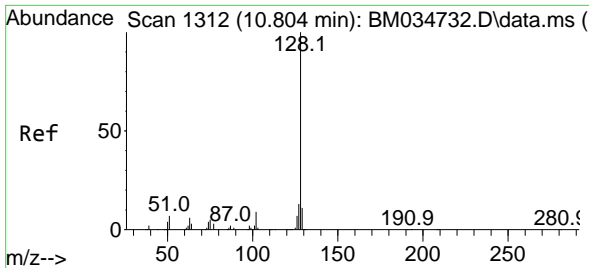


#29
 2,4-Dichlorophenol
 Concen: 177.364 ng/ul
 RT: 10.410 min Scan# 1245
 Delta R.T. 0.012 min
 Lab File: BM034735.D
 Acq: 20 Apr 2022 21:59

Tgt Ion: 162 Resp: 2202995

Ion	Ratio	Lower	Upper
162	100		
164	66.4	53.0	79.4
98	30.6	27.4	41.0



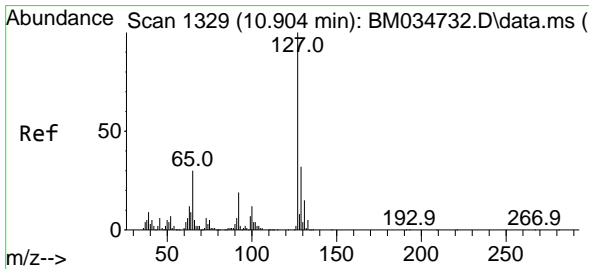
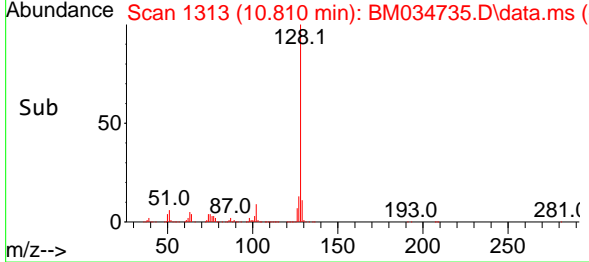
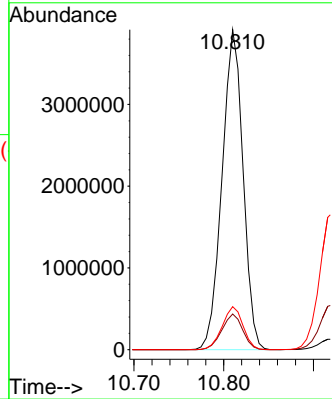
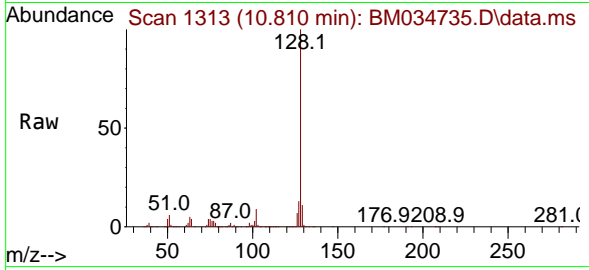


#30
 Naphthalene
 Concen: 157.463 ng/u1
 RT: 10.810 min Scan# 11
 Delta R.T. 0.006 min
 Lab File: BM034735.D
 Acq: 20 Apr 2022 21:59

Instrument : BNA_M
 ClientSampleId : SSTD160030

Tgt Ion:128 Resp: 6361963

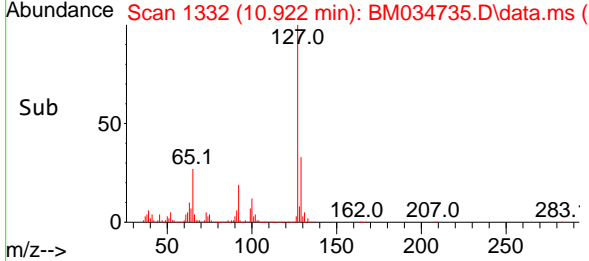
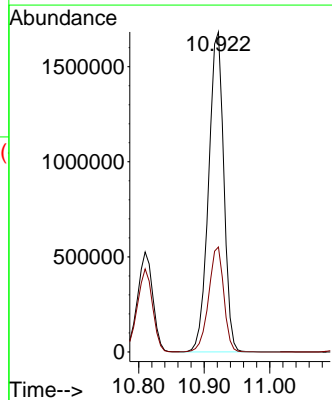
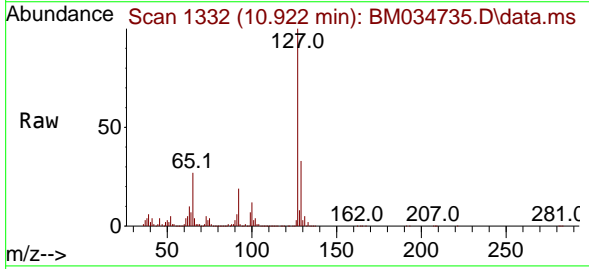
Ion	Ratio	Lower	Upper
128	100		
129	11.1	9.1	13.7
127	13.4	10.6	16.0

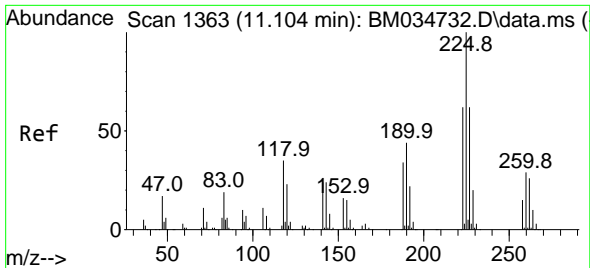


#32
 4-Chloroaniline
 Concen: 162.160 ng/u1
 RT: 10.922 min Scan# 1332
 Delta R.T. 0.018 min
 Lab File: BM034735.D
 Acq: 20 Apr 2022 21:59

Tgt Ion:127 Resp: 2712113

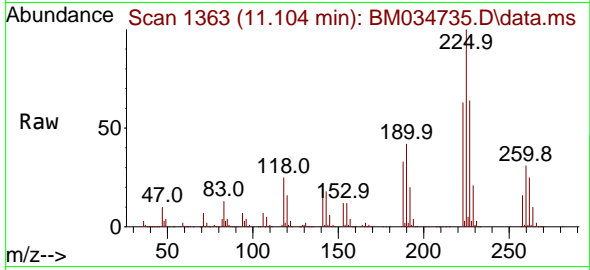
Ion	Ratio	Lower	Upper
127	100		
129	32.8	25.4	38.2



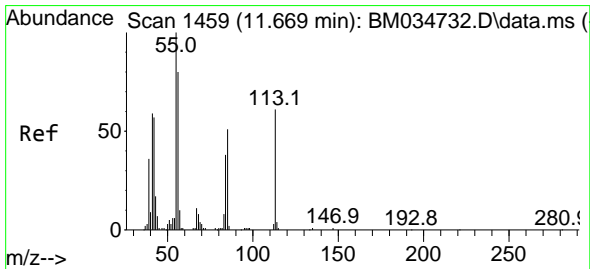
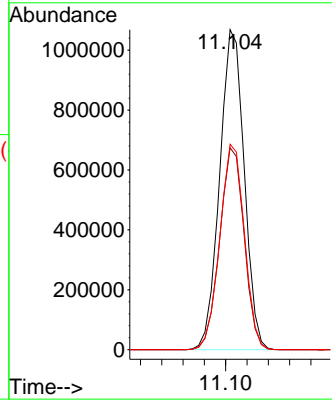
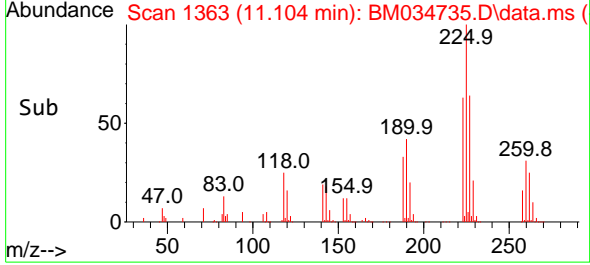


#33
 Hexachlorobutadiene
 Concen: 182.698 ng/uI
 RT: 11.104 min Scan# 111
 Delta R.T. 0.000 min
 Lab File: BM034735.D
 Acq: 20 Apr 2022 21:59

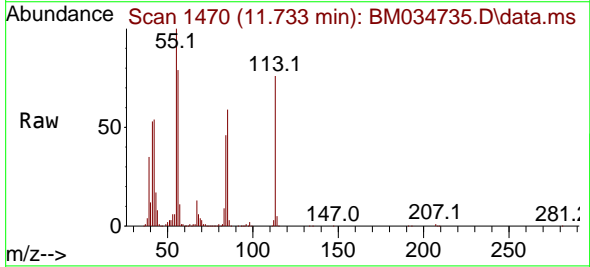
Instrument :
 BNA_M
 ClientSampleId :
 SSTD160030



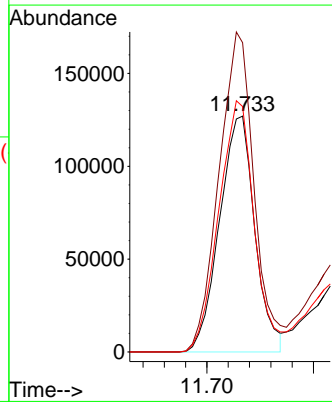
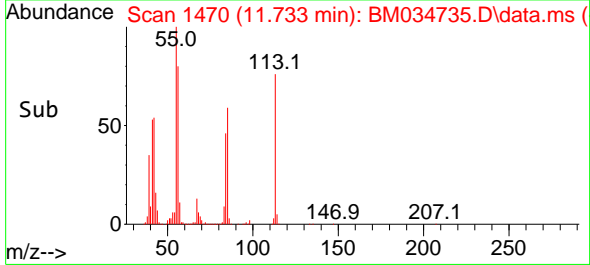
Tgt Ion:225 Resp: 1705705
 Ion Ratio Lower Upper
 225 100
 223 63.1 49.8 74.8
 227 64.2 49.6 74.4

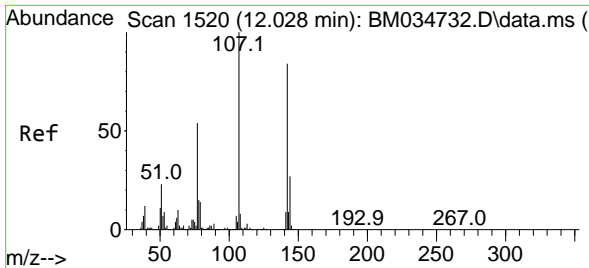


#34
 Caprolactam
 Concen: 98.216 ng/uI
 RT: 11.733 min Scan# 1470
 Delta R.T. 0.065 min
 Lab File: BM034735.D
 Acq: 20 Apr 2022 21:59



Tgt Ion:113 Resp: 291949
 Ion Ratio Lower Upper
 113 100
 55 131.2 130.6 195.8
 56 104.1 104.3 156.5#



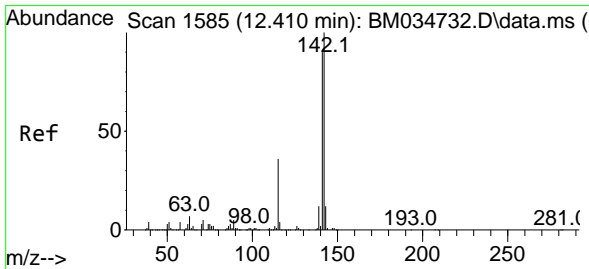
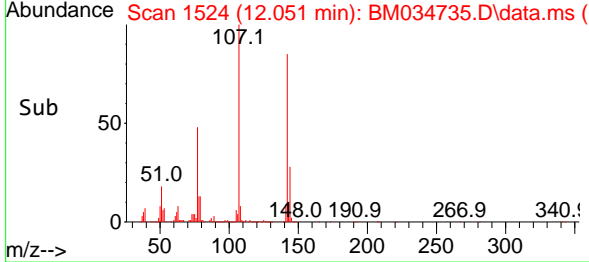
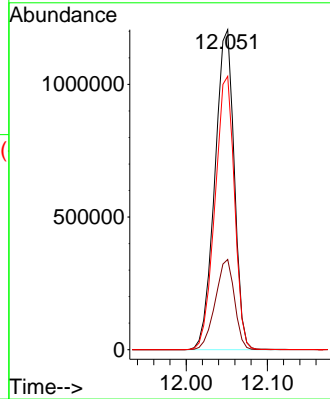
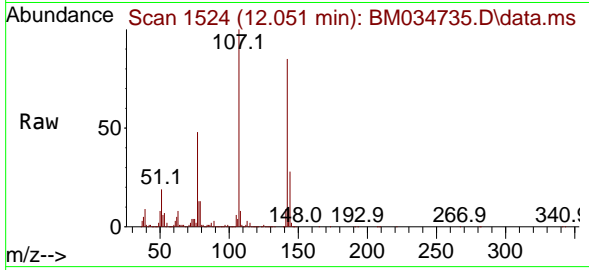


#35
 4-Chloro-3-methylphenol
 Concen: 173.088 ng/ul
 RT: 12.051 min Scan# 11
 Delta R.T. 0.024 min
 Lab File: BM034735.D
 Acq: 20 Apr 2022 21:59

Instrument :
 BNA_M
 ClientSampleId :
 SSTD160030

Tgt Ion:107 Resp: 2006778

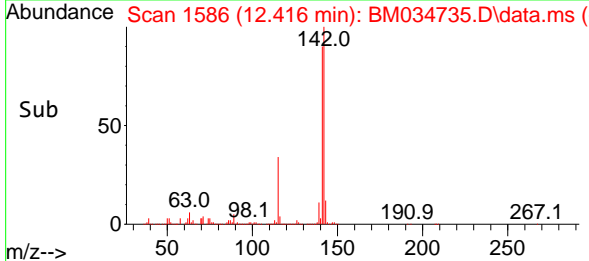
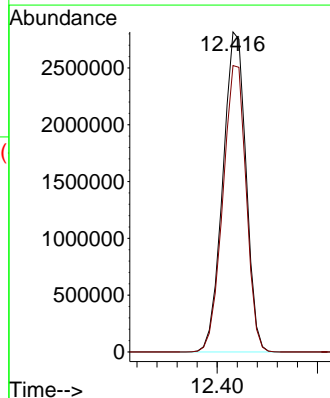
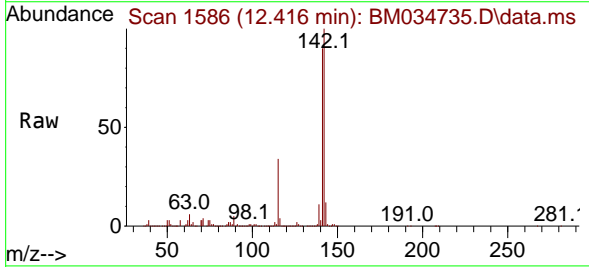
Ion	Ratio	Lower	Upper
107	100		
144	28.2	21.5	32.3
142	85.5	66.8	100.2

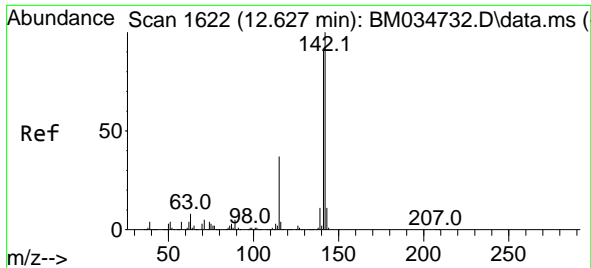


#36
 2-Methylnaphthalene
 Concen: 160.236 ng/ul
 RT: 12.416 min Scan# 1586
 Delta R.T. 0.006 min
 Lab File: BM034735.D
 Acq: 20 Apr 2022 21:59

Tgt Ion:142 Resp: 4507041

Ion	Ratio	Lower	Upper
142	100		
141	89.5	72.2	108.2

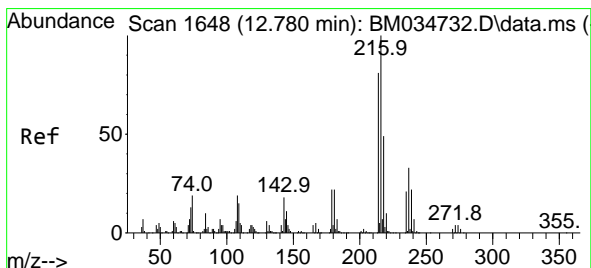
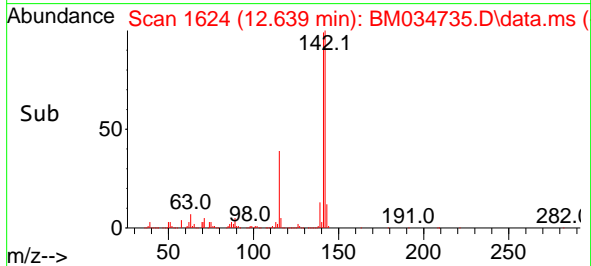
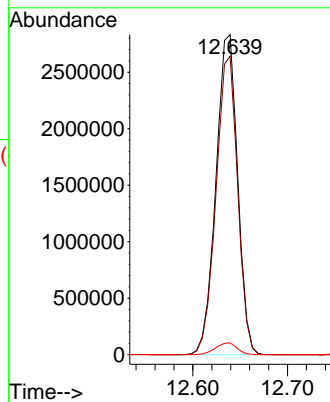
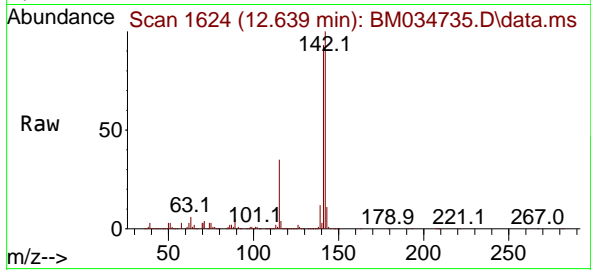




#37
 1-Methylnaphthalene
 Concen: 158.827 ng/ul
 RT: 12.639 min Scan# 1624
 Delta R.T. 0.012 min
 Lab File: BM034735.D
 Acq: 20 Apr 2022 21:59

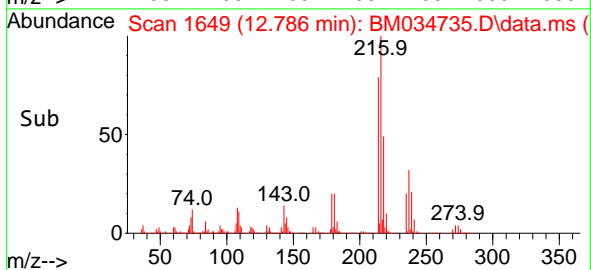
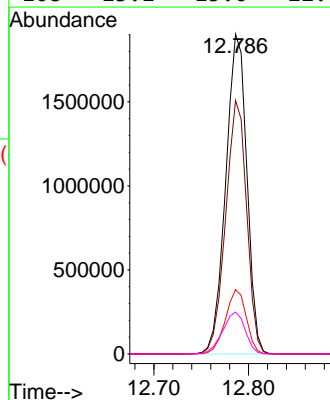
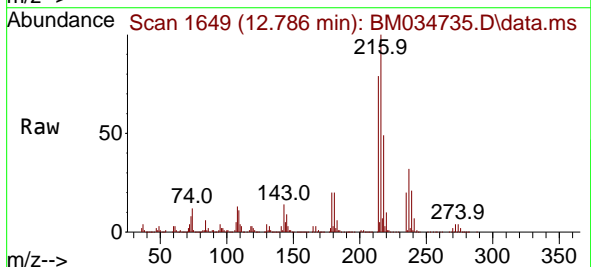
Instrument :
 BNA_M
 ClientSampleId :
 SSTD160030

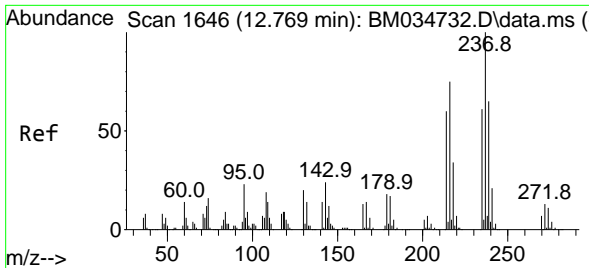
Tgt Ion:142 Resp: 4508169
 Ion Ratio Lower Upper
 142 100
 141 93.3 73.0 109.4
 116 3.7 3.2 4.8



#39
 1,2,4,5-Tetrachlorobenzene
 Concen: 162.895 ng/ul
 RT: 12.786 min Scan# 1649
 Delta R.T. 0.006 min
 Lab File: BM034735.D
 Acq: 20 Apr 2022 21:59

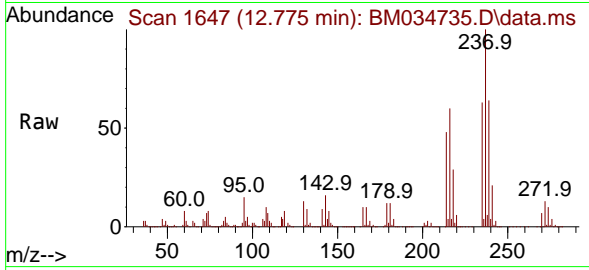
Tgt Ion:216 Resp: 2952697
 Ion Ratio Lower Upper
 216 100
 214 79.2 64.5 96.7
 179 20.1 17.9 26.9
 108 13.1 15.0 22.4#



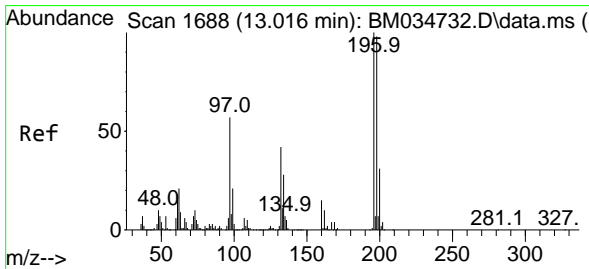
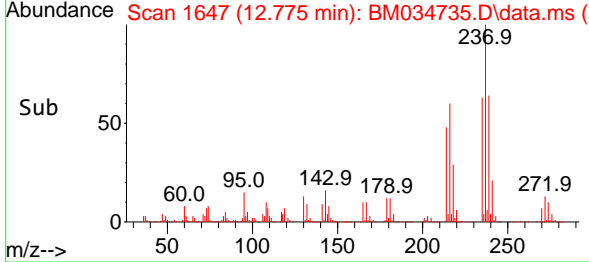
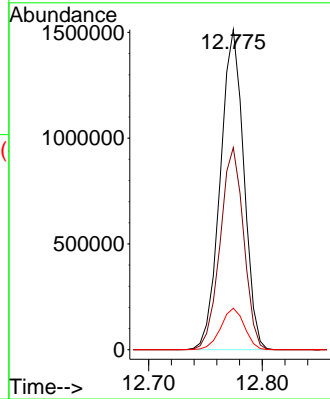


#40
 Hexachlorocyclopentadiene
 Concen: 174.665 ng/ul
 RT: 12.775 min Scan# 1647
 Delta R.T. 0.006 min
 Lab File: BM034735.D
 Acq: 20 Apr 2022 21:59

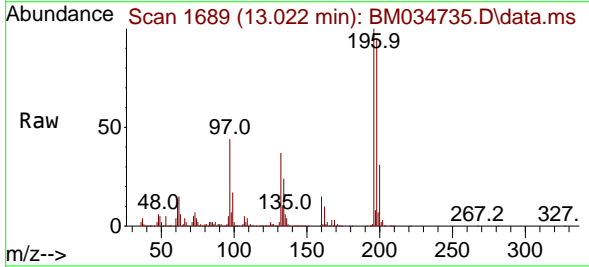
Instrument :
 BNA_M
 ClientSampleId :
 SSTD160030



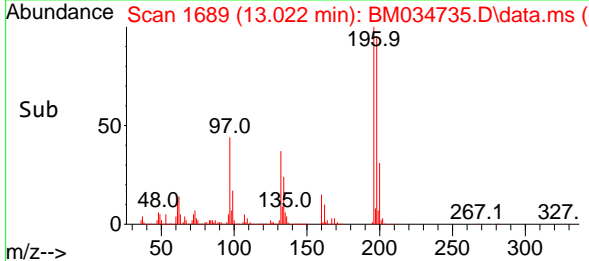
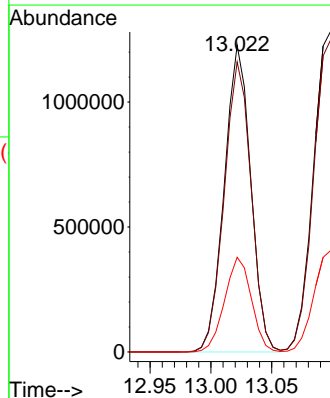
Tgt Ion:237 Resp: 2176710
 Ion Ratio Lower Upper
 237 100
 235 63.1 49.2 73.8
 272 12.9 10.0 15.0

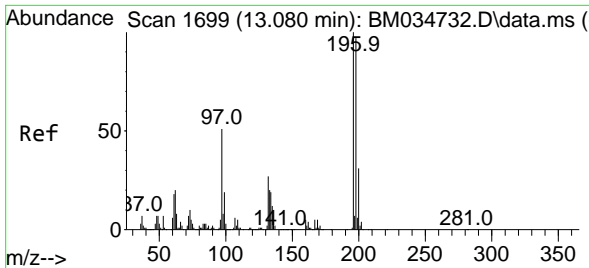


#41
 2,4,6-Trichlorophenol
 Concen: 174.088 ng/ul
 RT: 13.022 min Scan# 1689
 Delta R.T. 0.006 min
 Lab File: BM034735.D
 Acq: 20 Apr 2022 21:59



Tgt Ion:196 Resp: 1857753
 Ion Ratio Lower Upper
 196 100
 198 94.6 78.5 117.7
 200 30.9 25.0 37.6

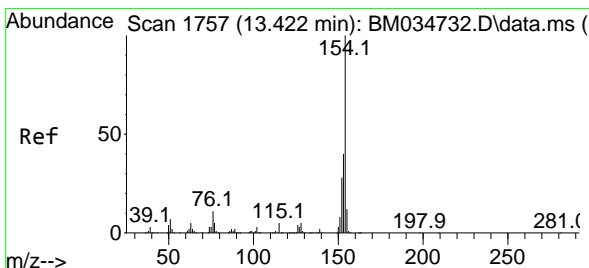
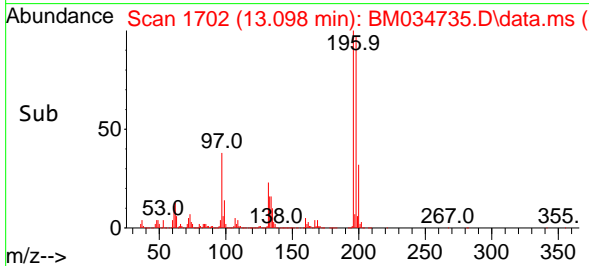
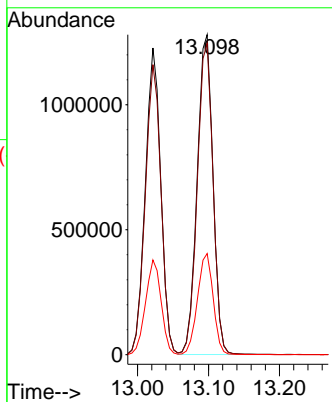
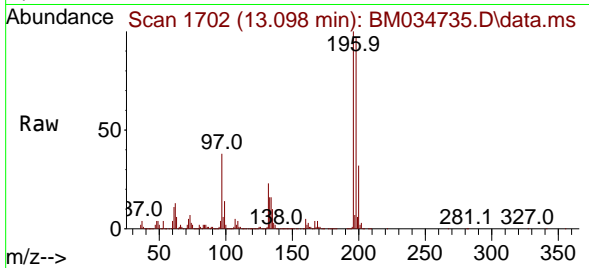




#42
 2,4,5-Trichlorophenol
 Concen: 176.347 ng/ul
 RT: 13.098 min Scan# 1
 Delta R.T. 0.018 min
 Lab File: BM034735.D
 Acq: 20 Apr 2022 21:59

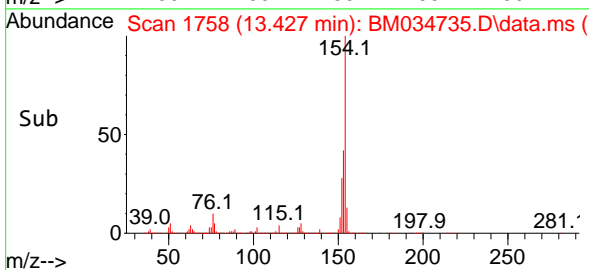
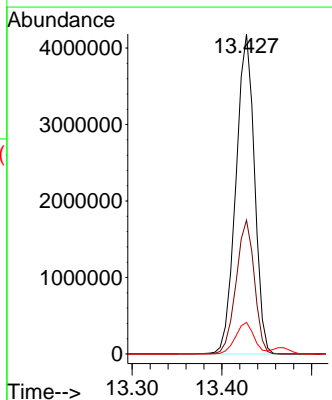
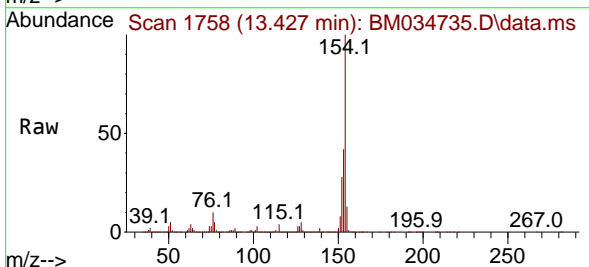
Instrument :
 BNA_M
 ClientSampleId :
 SSTD160030

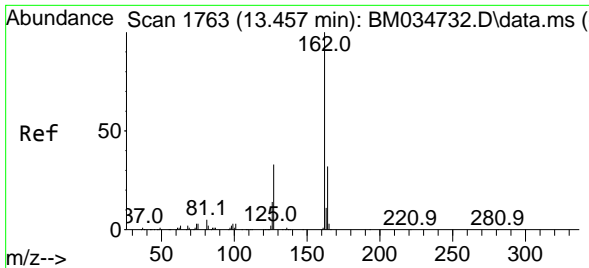
Tgt Ion:196 Resp: 1984509
 Ion Ratio Lower Upper
 196 100
 198 97.3 77.7 116.5
 200 31.6 25.0 37.4



#43
 1,1'-Biphenyl
 Concen: 142.596 ng/ul
 RT: 13.427 min Scan# 1758
 Delta R.T. 0.006 min
 Lab File: BM034735.D
 Acq: 20 Apr 2022 21:59

Tgt Ion:154 Resp: 6002061
 Ion Ratio Lower Upper
 154 100
 153 41.8 32.2 48.2
 76 9.9 8.6 12.8



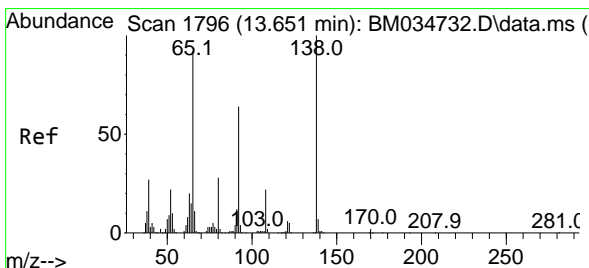
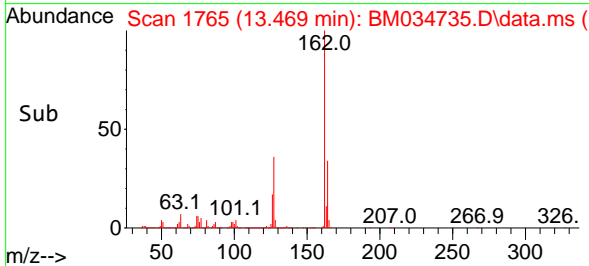
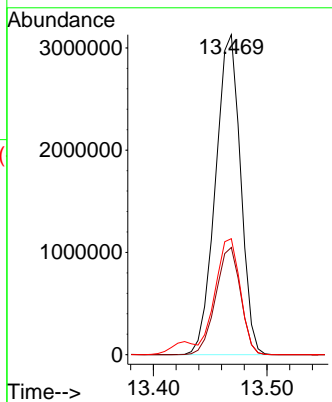
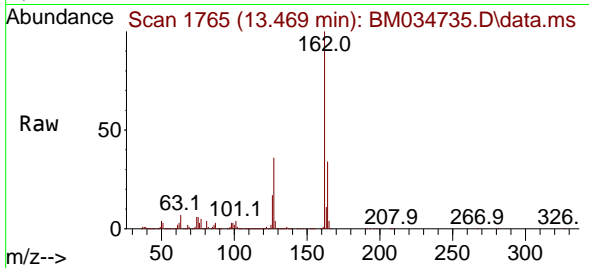


#44
 2-Chloronaphthalene
 Concen: 146.530 ng/uI
 RT: 13.469 min Scan# 1765
 Delta R.T. 0.012 min
 Lab File: BM034735.D
 Acq: 20 Apr 2022 21:59

Instrument : BNA_M
 ClientSampleId : SSTD160030

Tgt Ion:162 Resp: 4797170

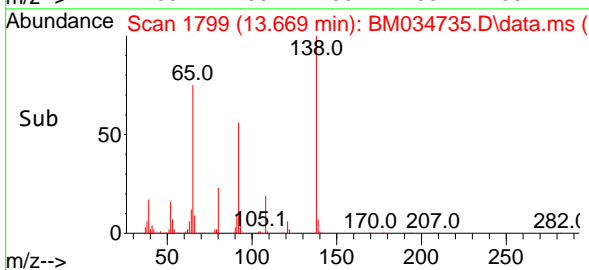
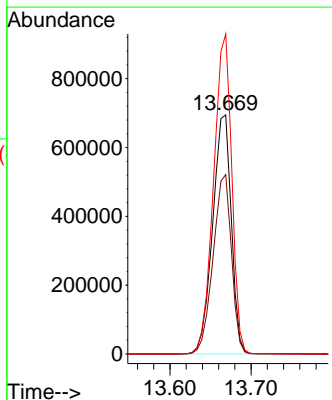
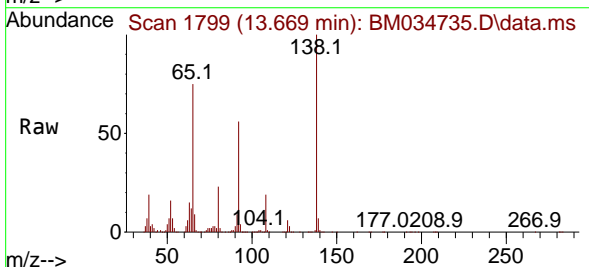
Ion	Ratio	Lower	Upper
162	100		
164	33.5	25.7	38.5
127	36.3	29.8	44.8

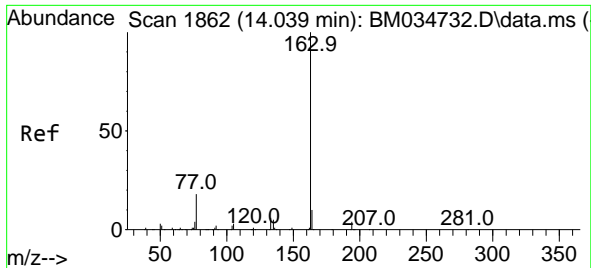


#45
 2-Nitroaniline
 Concen: 181.739 ng/uI
 RT: 13.669 min Scan# 1799
 Delta R.T. 0.018 min
 Lab File: BM034735.D
 Acq: 20 Apr 2022 21:59

Tgt Ion: 65 Resp: 1110451

Ion	Ratio	Lower	Upper
65	100		
92	75.1	55.9	83.9
138	133.9	87.3	130.9#





#47
 Dimethylphthalate
 Concen: 160.314 ng/ul
 RT: 14.051 min Scan# 1864
 Delta R.T. 0.012 min
 Lab File: BM034735.D
 Acq: 20 Apr 2022 21:59

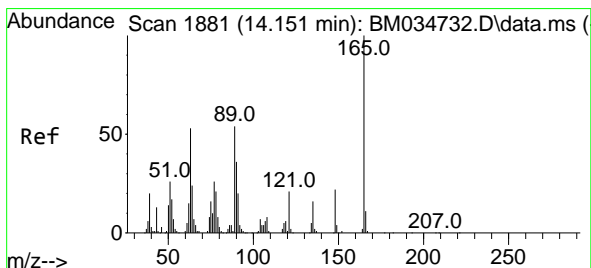
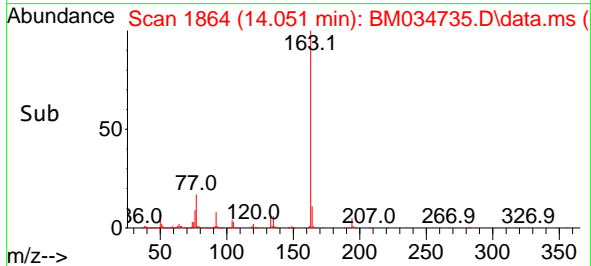
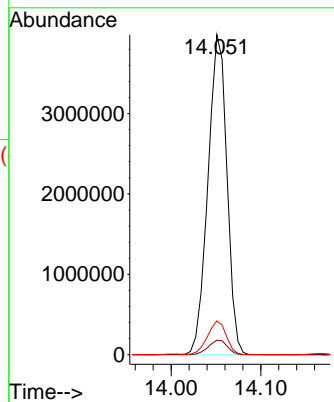
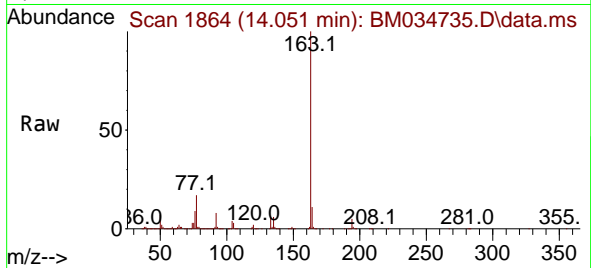
Instrument :

BNA_M

ClientSampleId :

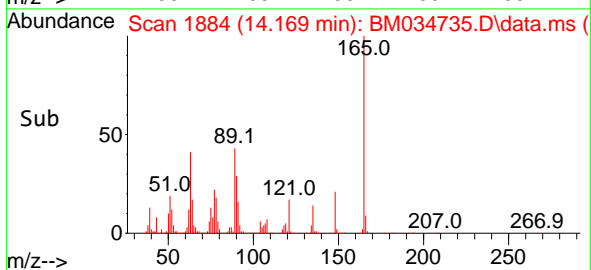
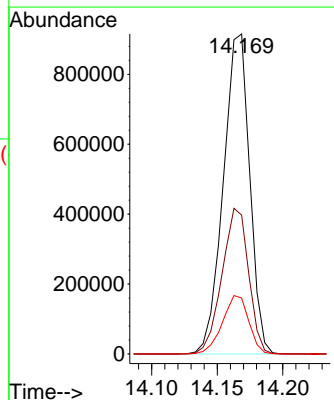
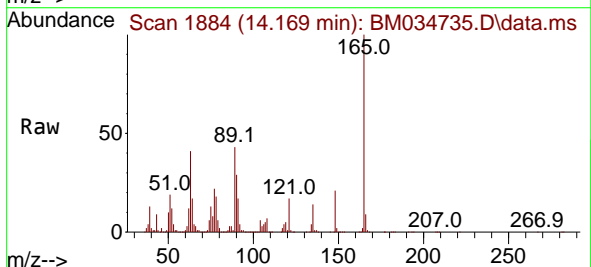
SSTD160030

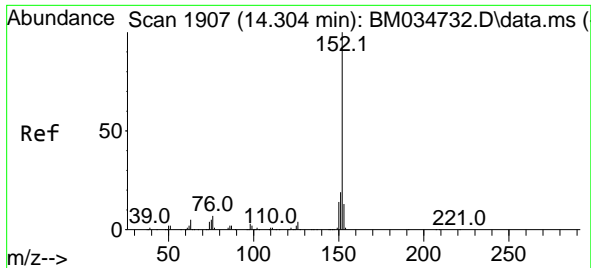
Tgt Ion:163 Resp: 5847396
 Ion Ratio Lower Upper
 163 100
 194 4.5 3.4 5.0
 164 10.5 8.2 12.4



#48
 2,6-Dinitrotoluene
 Concen: 212.184 ng/ul
 RT: 14.169 min Scan# 1884
 Delta R.T. 0.018 min
 Lab File: BM034735.D
 Acq: 20 Apr 2022 21:59

Tgt Ion:165 Resp: 1280815
 Ion Ratio Lower Upper
 165 100
 89 43.4 43.1 64.7
 121 17.5 16.6 24.8

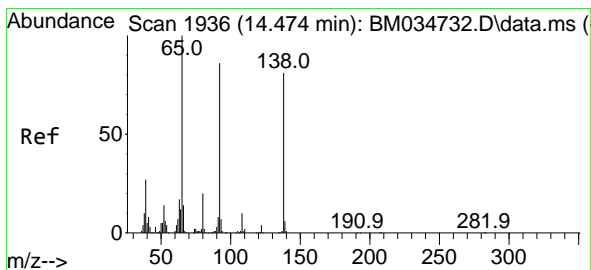
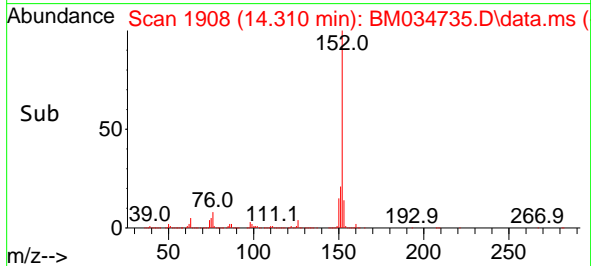
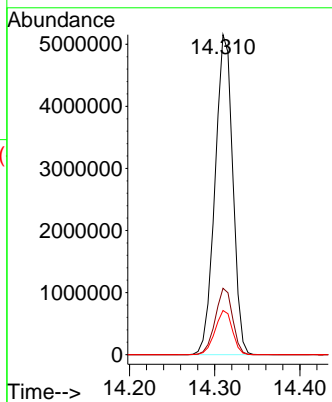
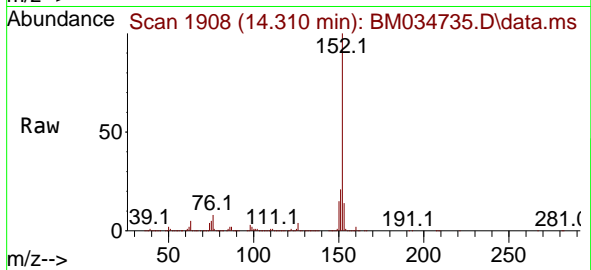




#50
 Acenaphthylene
 Concen: 156.769 ng/ul
 RT: 14.310 min Scan# 1908
 Delta R.T. 0.006 min
 Lab File: BM034735.D
 Acq: 20 Apr 2022 21:59

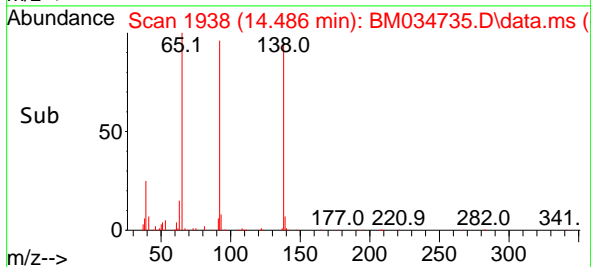
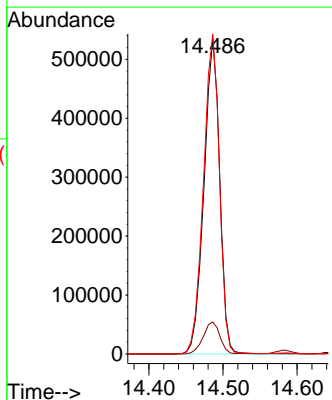
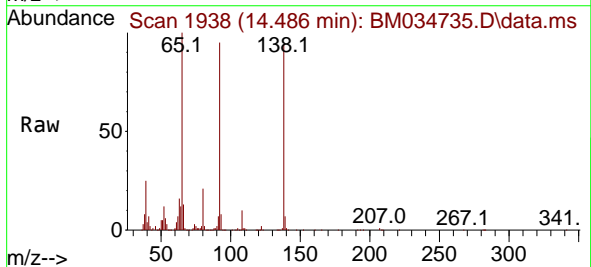
Instrument :
 BNA_M
 ClientSampleId :
 SSTD160030

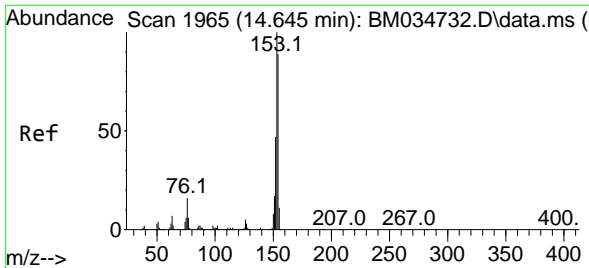
Tgt Ion:152 Resp: 7469196
 Ion Ratio Lower Upper
 152 100
 151 20.8 15.3 22.9
 153 13.8 10.2 15.4



#51
 3-Nitroaniline
 Concen: 152.218 ng/ul
 RT: 14.486 min Scan# 1938
 Delta R.T. 0.012 min
 Lab File: BM034735.D
 Acq: 20 Apr 2022 21:59

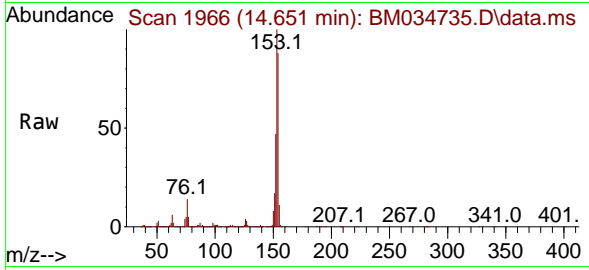
Tgt Ion:138 Resp: 787982
 Ion Ratio Lower Upper
 138 100
 108 10.2 10.2 15.4#
 92 101.4 85.4 128.0



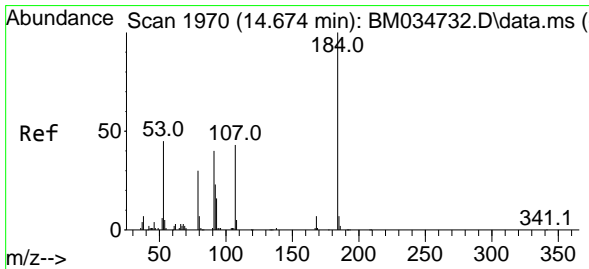
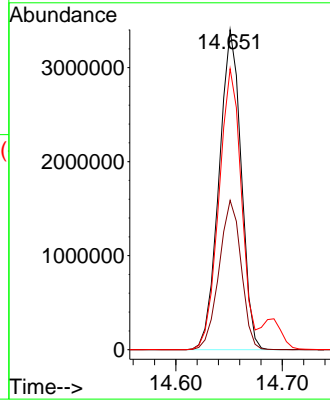
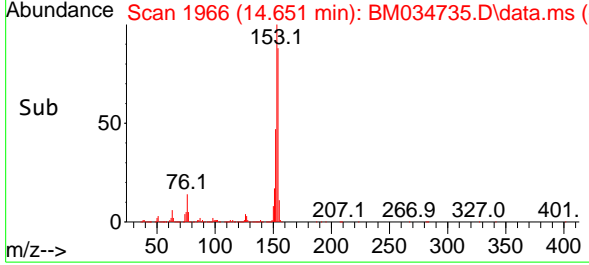


#52
 Acenaphthene
 Concen: 157.569 ng/u1
 RT: 14.651 min Scan# 1966
 Delta R.T. 0.006 min
 Lab File: BM034735.D
 Acq: 20 Apr 2022 21:59

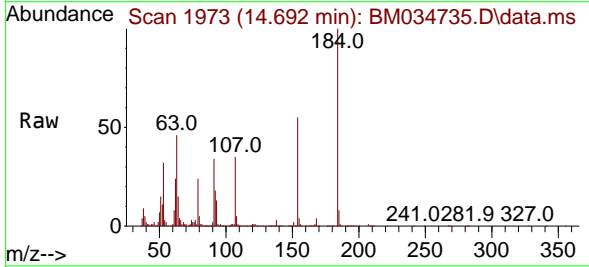
Instrument :
 BNA_M
 ClientSampleId :
 SSTD160030



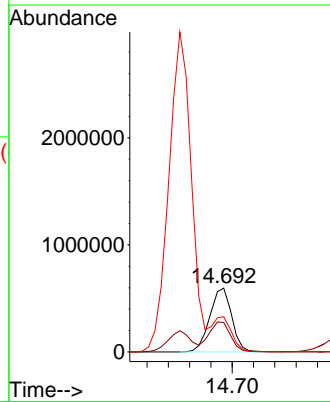
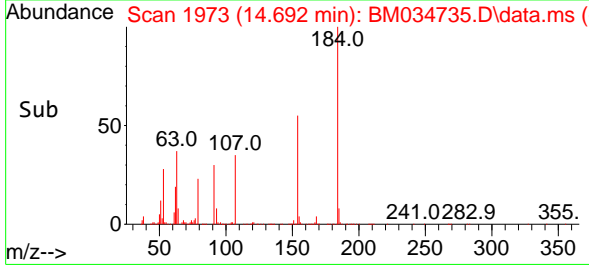
Tgt Ion:153 Resp: 4915685
 Ion Ratio Lower Upper
 153 100
 152 46.6 37.5 56.3
 154 87.8 71.0 106.4

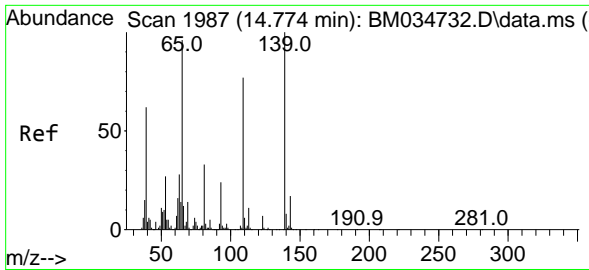


#53
 2,4-Dinitrophenol
 Concen: 253.396 ng/u1
 RT: 14.692 min Scan# 1973
 Delta R.T. 0.018 min
 Lab File: BM034735.D
 Acq: 20 Apr 2022 21:59



Tgt Ion:184 Resp: 855529
 Ion Ratio Lower Upper
 184 100
 63 46.0 51.8 77.6#
 154 55.1 54.3 81.5

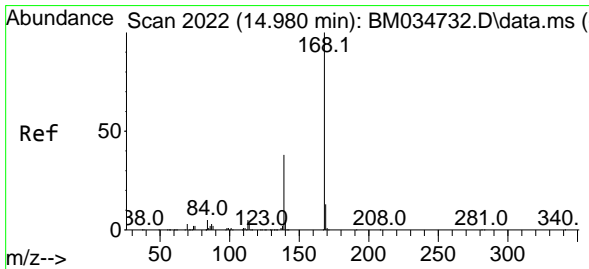
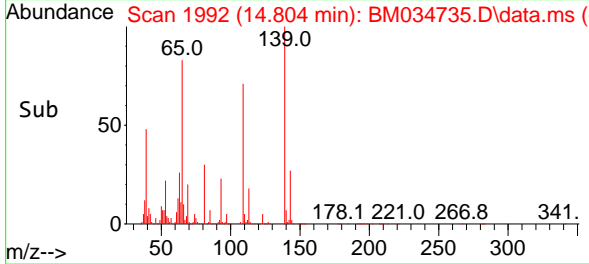
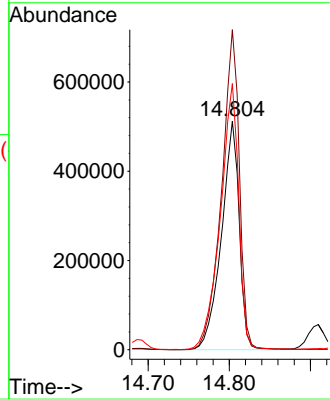
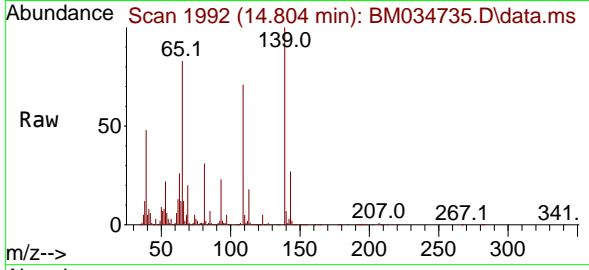




#55
 4-Nitrophenol
 Concen: 174.620 ng/uI
 RT: 14.804 min Scan# 1987
 Delta R.T. 0.029 min
 Lab File: BM034735.D
 Acq: 20 Apr 2022 21:59

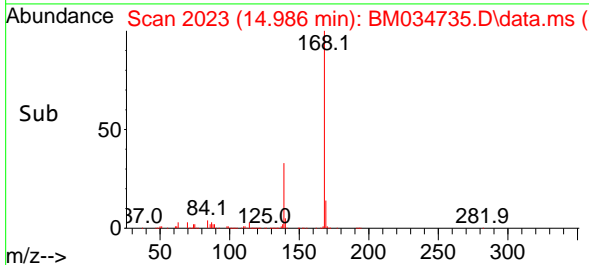
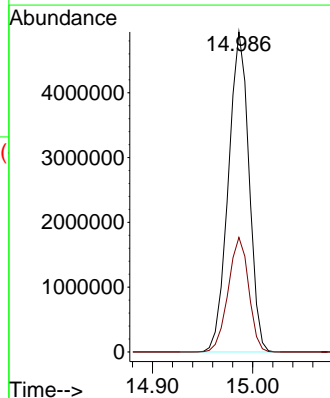
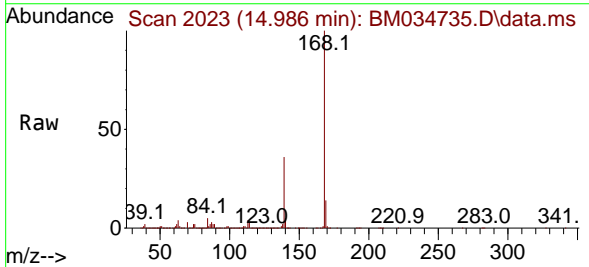
Instrument :
 BNA_M
 ClientSampleId :
 SSTD160030

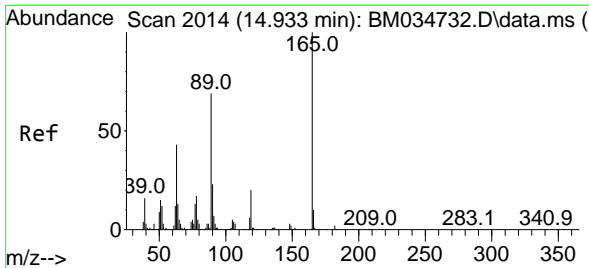
Tgt Ion:109 Resp: 778143
 Ion Ratio Lower Upper
 109 100
 139 140.0 104.6 156.8
 65 116.4 100.6 150.8



#56
 Dibenzofuran
 Concen: 156.097 ng/uI
 RT: 14.986 min Scan# 2023
 Delta R.T. 0.006 min
 Lab File: BM034735.D
 Acq: 20 Apr 2022 21:59

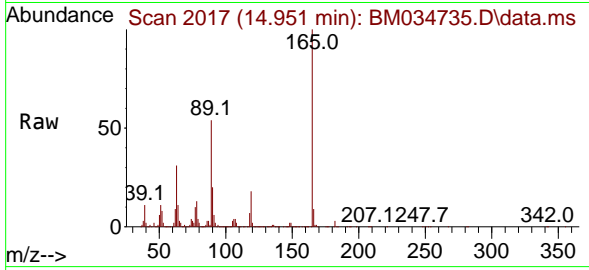
Tgt Ion:168 Resp: 7045462
 Ion Ratio Lower Upper
 168 100
 139 35.8 30.0 45.0



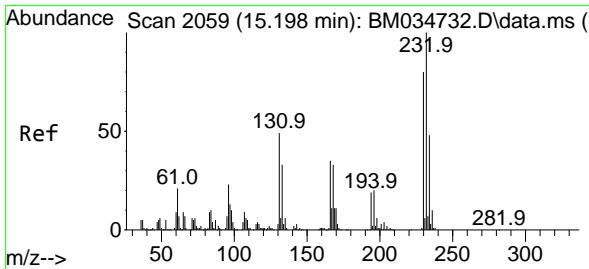
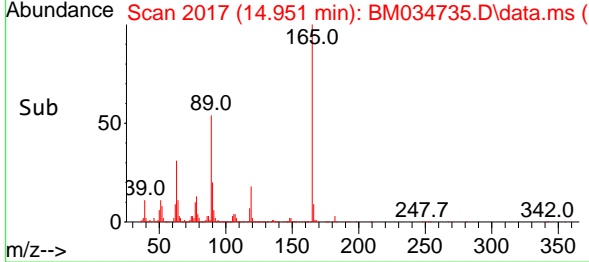
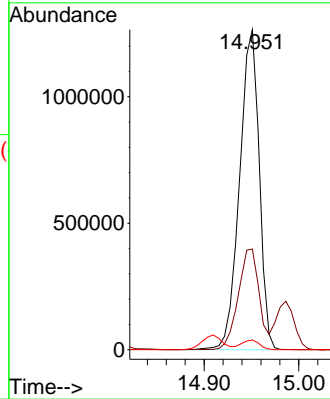


#57
 2,4-Dinitrotoluene
 Concen: 214.412 ng/ul
 RT: 14.951 min Scan# 2061
 Delta R.T. 0.018 min
 Lab File: BM034735.D
 Acq: 20 Apr 2022 21:59

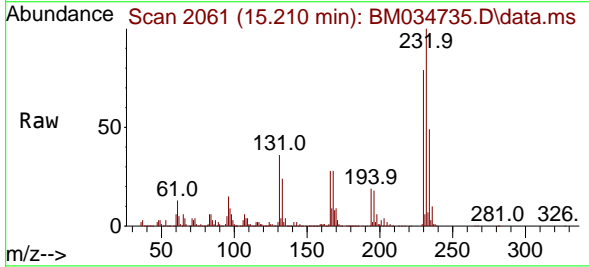
Instrument :
 BNA_M
 ClientSampleId :
 SSTD160030



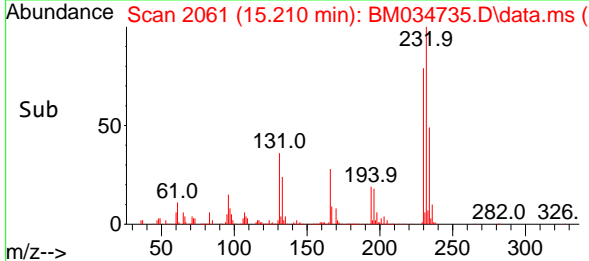
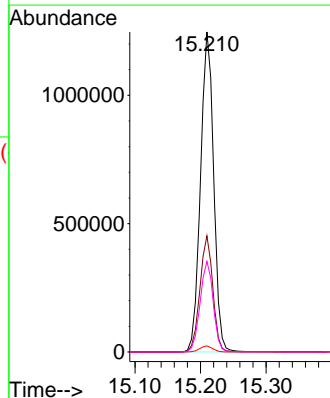
Tgt Ion:165 Resp: 1820333
 Ion Ratio Lower Upper
 165 100
 63 31.4 34.2 51.4#
 182 3.0 2.2 3.2

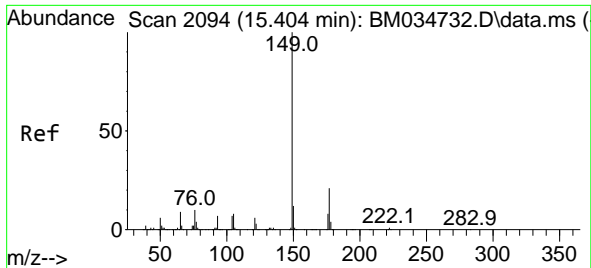


#58
 2,3,4,6-Tetrachlorophenol
 Concen: 192.289 ng/ul
 RT: 15.210 min Scan# 2061
 Delta R.T. 0.012 min
 Lab File: BM034735.D
 Acq: 20 Apr 2022 21:59



Tgt Ion:232 Resp: 1742401
 Ion Ratio Lower Upper
 232 100
 131 36.3 39.6 59.4#
 130 1.9 2.1 3.1#
 166 28.3 27.7 41.5





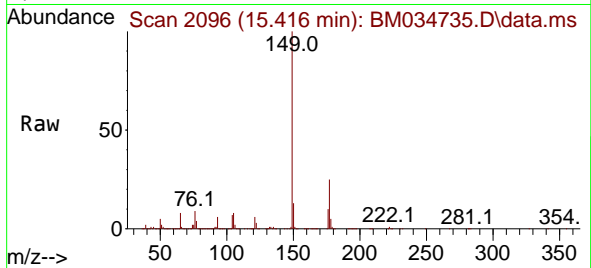
#59
 Diethylphthalate
 Concen: 159.718 ng/uI
 RT: 15.416 min Scan# 2096
 Delta R.T. 0.012 min
 Lab File: BM034735.D
 Acq: 20 Apr 2022 21:59

Instrument :

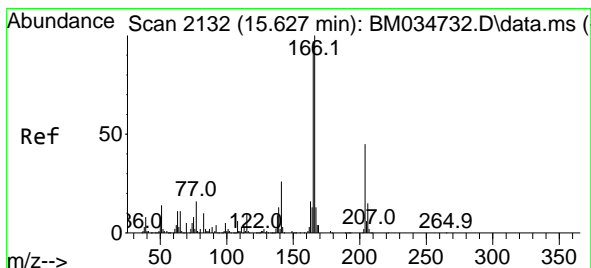
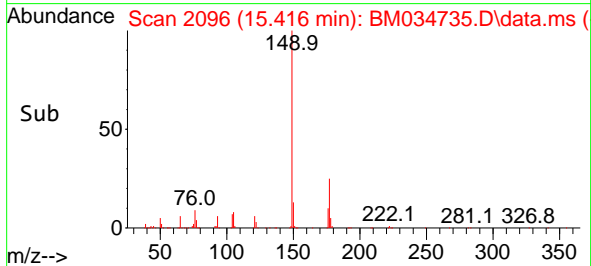
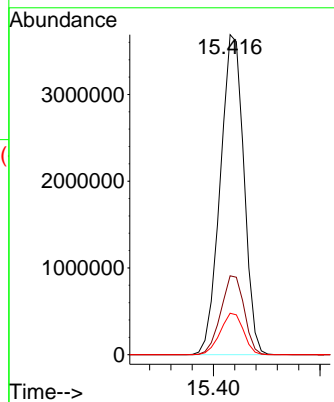
BNA_M

ClientSampleId :

SSTD160030

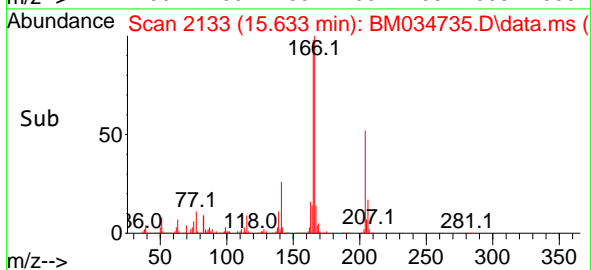
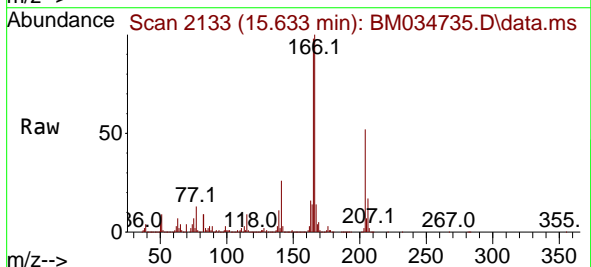
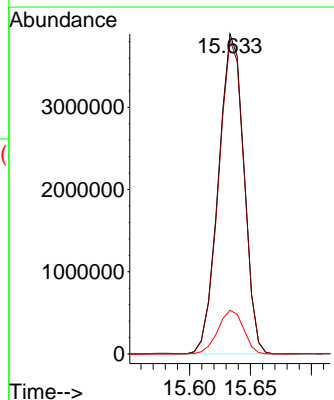


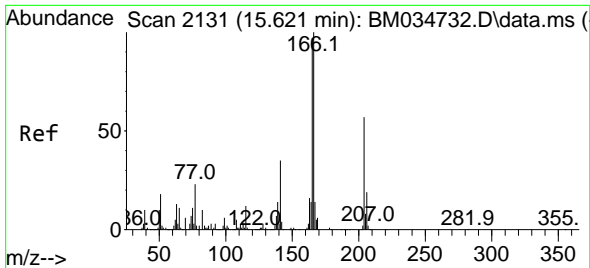
Tgt Ion:149 Resp: 5663433
 Ion Ratio Lower Upper
 149 100
 177 24.7 17.2 25.8
 150 13.0 9.8 14.6



#61
 Fluorene
 Concen: 155.332 ng/uI
 RT: 15.633 min Scan# 2133
 Delta R.T. 0.006 min
 Lab File: BM034735.D
 Acq: 20 Apr 2022 21:59

Tgt Ion:166 Resp: 5670018
 Ion Ratio Lower Upper
 166 100
 165 98.3 77.9 116.9
 167 13.6 10.3 15.5

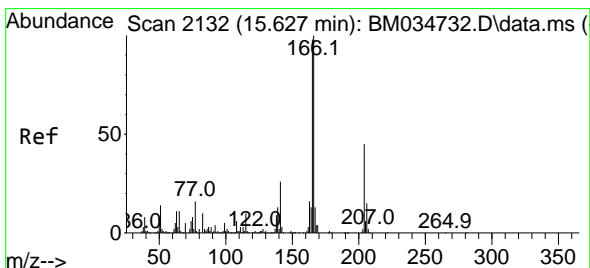
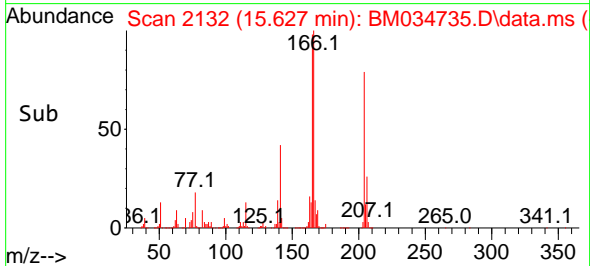
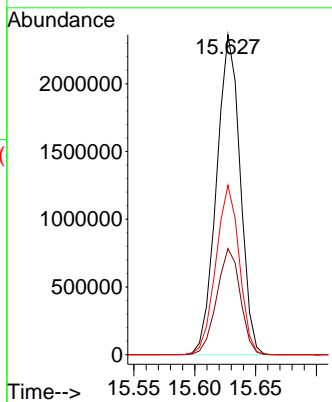
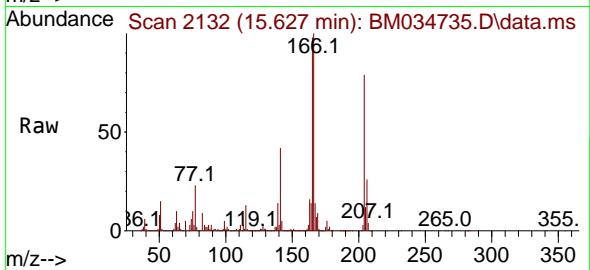




#62
 4-Chlorophenyl-phenylether
 Concen: 162.990 ng/ul
 RT: 15.627 min Scan# 2132
 Delta R.T. 0.006 min
 Lab File: BM034735.D
 Acq: 20 Apr 2022 21:59

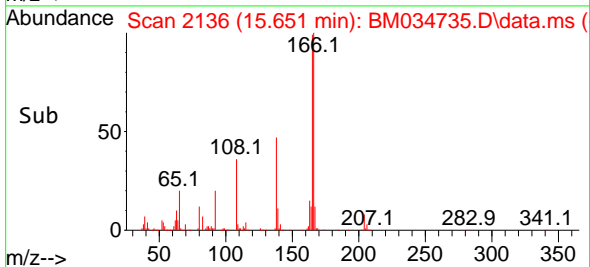
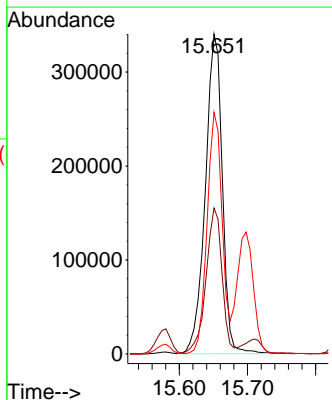
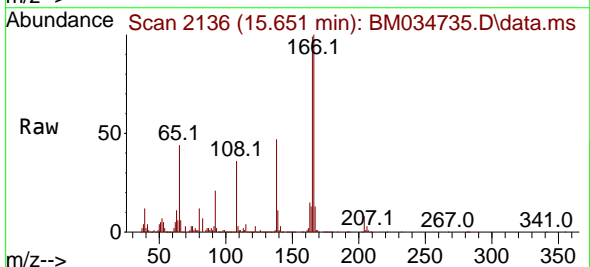
Instrument :
 BNA_M
 ClientSampleId :
 SSTD160030

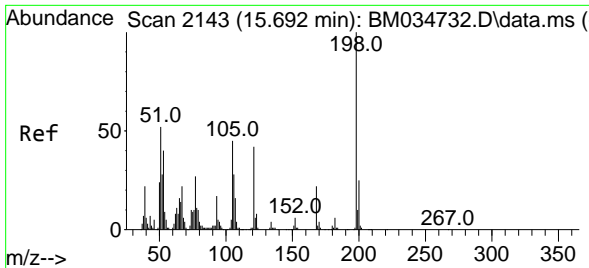
Tgt Ion:204 Resp: 3187912
 Ion Ratio Lower Upper
 204 100
 206 33.2 26.2 39.4
 141 53.0 49.5 74.3



#63
 4-Nitroaniline
 Concen: 124.793 ng/ul
 RT: 15.651 min Scan# 2136
 Delta R.T. 0.024 min
 Lab File: BM034735.D
 Acq: 20 Apr 2022 21:59

Tgt Ion:138 Resp: 591338
 Ion Ratio Lower Upper
 138 100
 92 45.6 37.2 55.8
 108 75.5 58.4 87.6

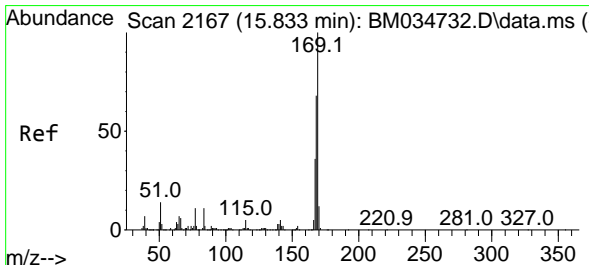
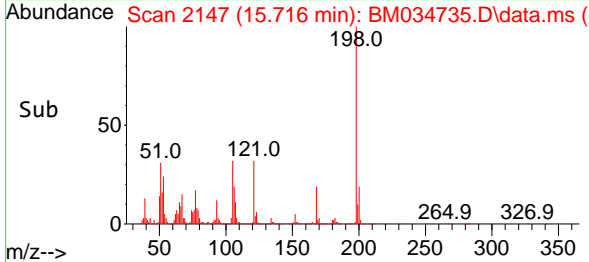
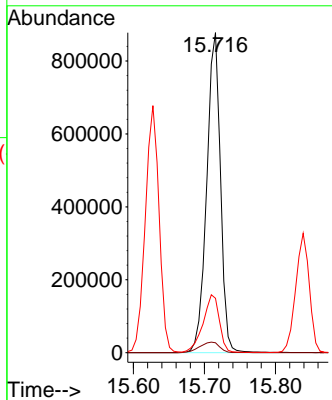
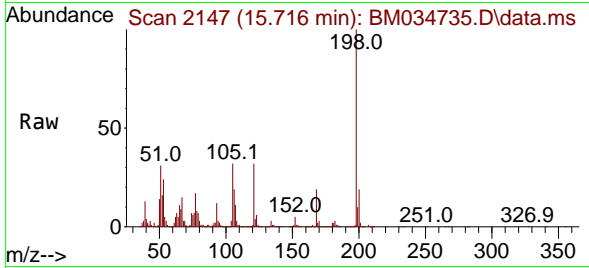




#66
 4,6-Dinitro-2-methylphenol
 Concen: 27.778 ng/ul
 RT: 15.716 min Scan# 2147
 Delta R.T. 0.024 min
 Lab File: BM034735.D
 Acq: 20 Apr 2022 21:59

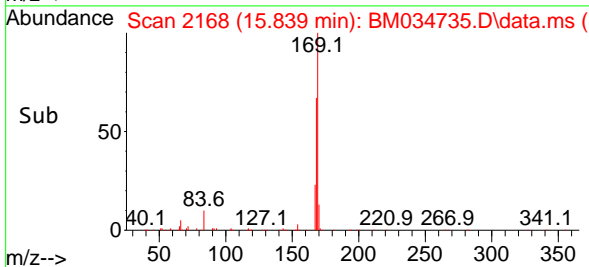
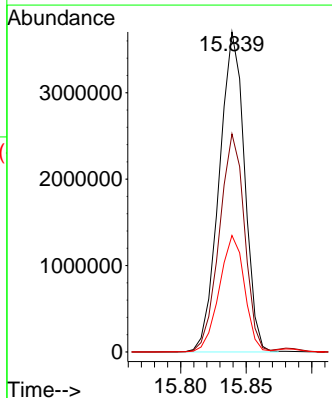
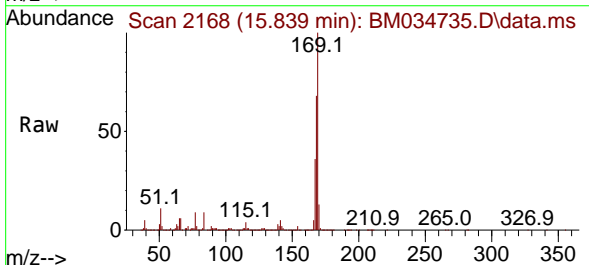
Instrument :
 BNA_M
 ClientSampleId :
 SSTD160030

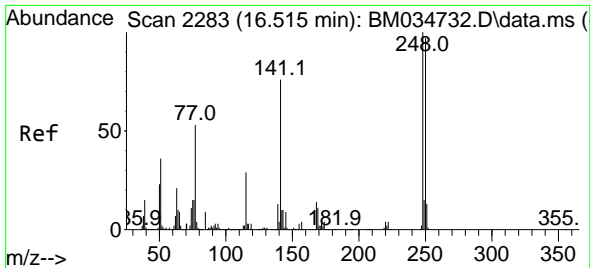
Tgt Ion:198 Resp: 1185693
 Ion Ratio Lower Upper
 198 100
 182 3.1 4.6 6.8#
 77 17.0 22.2 33.2#



#67
 N-Nitrosodiphenylamine
 Concen: 20.316 ng/ul
 RT: 15.839 min Scan# 2168
 Delta R.T. 0.006 min
 Lab File: BM034735.D
 Acq: 20 Apr 2022 21:59

Tgt Ion:169 Resp: 4979855
 Ion Ratio Lower Upper
 169 100
 168 68.1 54.8 82.2
 167 36.4 28.9 43.3

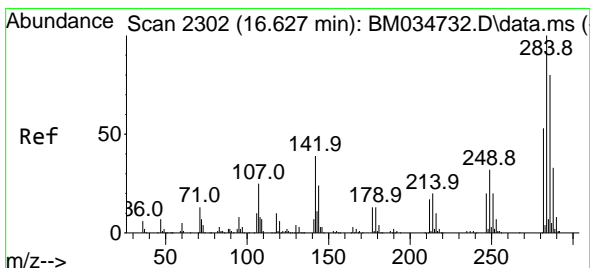
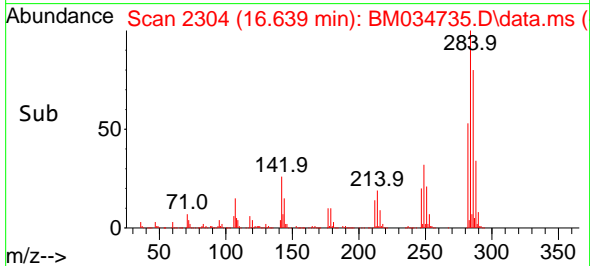
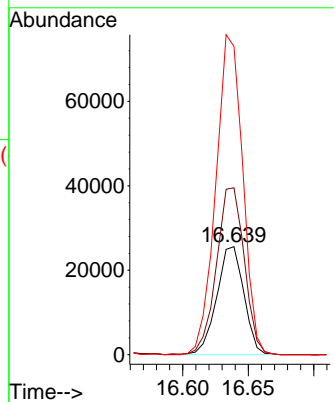
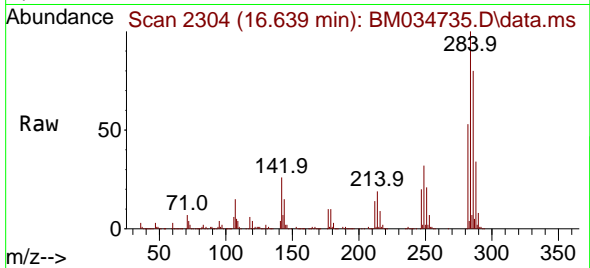




#68
 4-Bromophenyl-phenylether
 Concen: 0.384 ng/ul
 RT: 16.639 min Scan# 21
 Delta R.T. 0.124 min
 Lab File: BM034735.D
 Acq: 20 Apr 2022 21:59

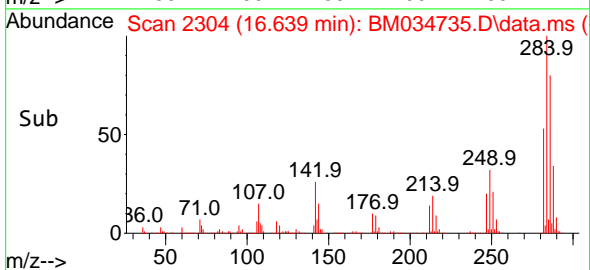
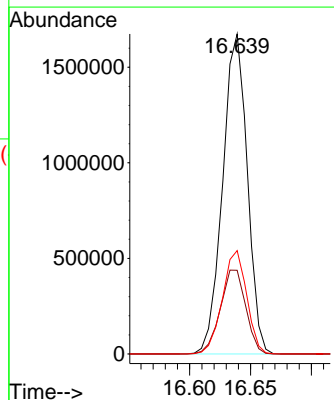
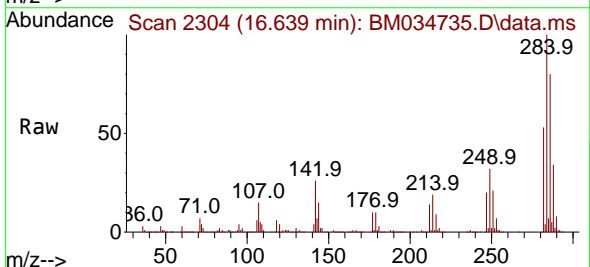
Instrument :
 BNA_M
 ClientSampleId :
 SSTD160030

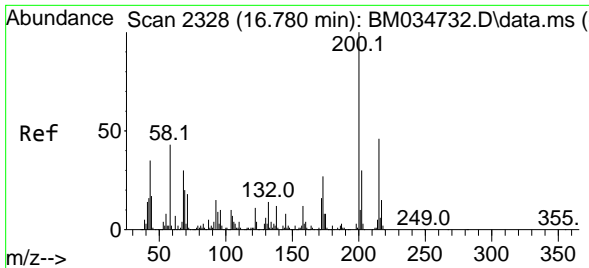
Tgt Ion:248 Resp: 36869
 Ion Ratio Lower Upper
 248 100
 250 154.4 77.9 116.9#
 141 285.3 61.0 91.4#



#69
 Hexachlorobenzene
 Concen: 20.829 ng/ul
 RT: 16.639 min Scan# 2304
 Delta R.T. 0.012 min
 Lab File: BM034735.D
 Acq: 20 Apr 2022 21:59

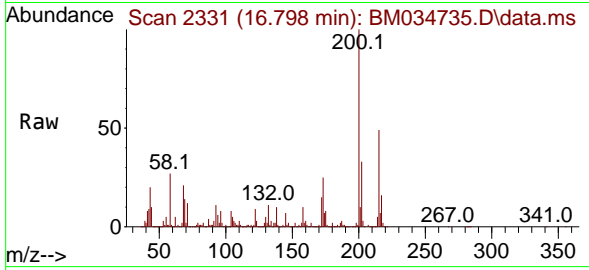
Tgt Ion:284 Resp: 2353346
 Ion Ratio Lower Upper
 284 100
 142 26.2 31.2 46.8#
 249 32.3 25.9 38.9



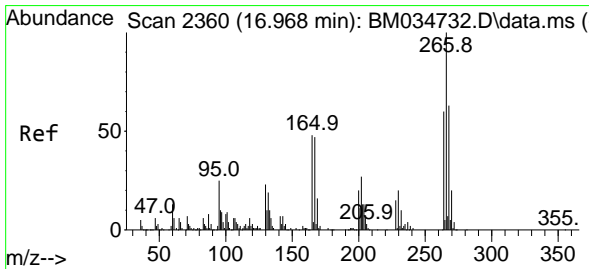
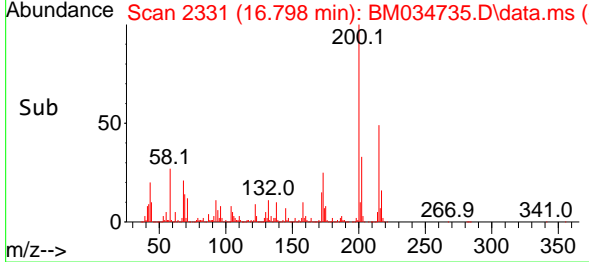
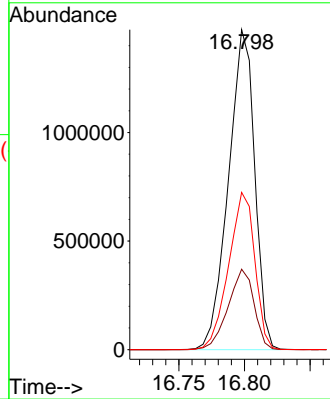


#70
 Atrazine
 Concen: 21.663 ng/ul
 RT: 16.798 min Scan# 21
 Delta R.T. 0.018 min
 Lab File: BM034735.D
 Acq: 20 Apr 2022 21:59

Instrument :
 BNA_M
 ClientSampleId :
 SSTD160030

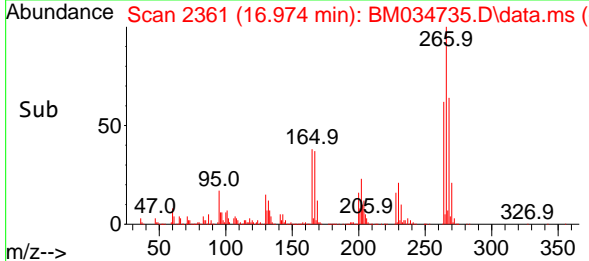
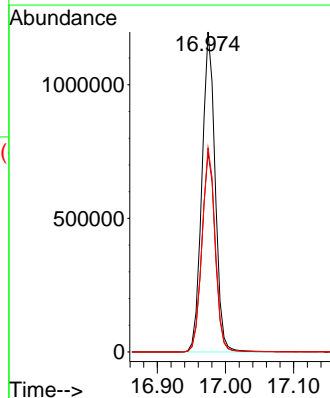
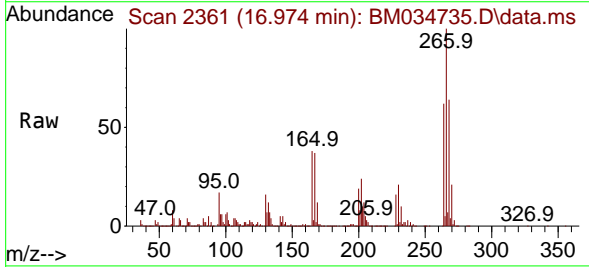


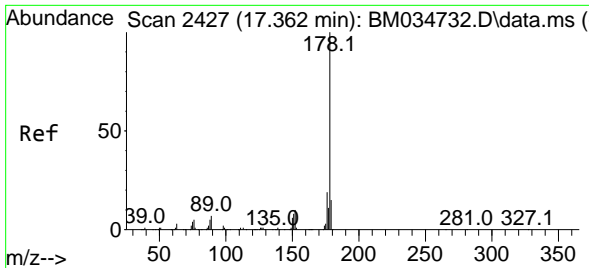
Tgt Ion:200 Resp: 2045502
 Ion Ratio Lower Upper
 200 100
 173 25.1 21.3 31.9
 215 49.1 37.1 55.7



#71
 Pentachlorophenol
 Concen: 23.441 ng/ul
 RT: 16.974 min Scan# 2361
 Delta R.T. 0.006 min
 Lab File: BM034735.D
 Acq: 20 Apr 2022 21:59

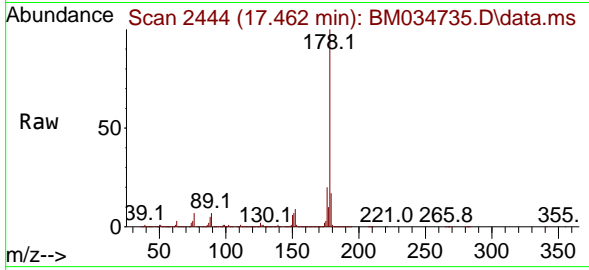
Tgt Ion:266 Resp: 1616666
 Ion Ratio Lower Upper
 266 100
 264 62.4 48.4 72.6
 268 63.7 50.6 76.0



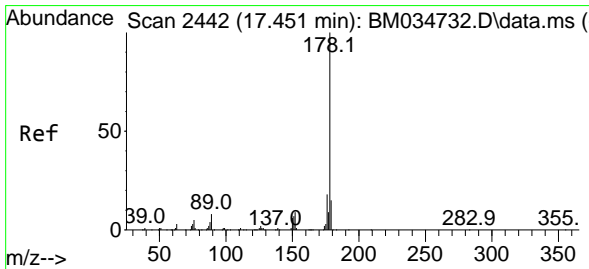
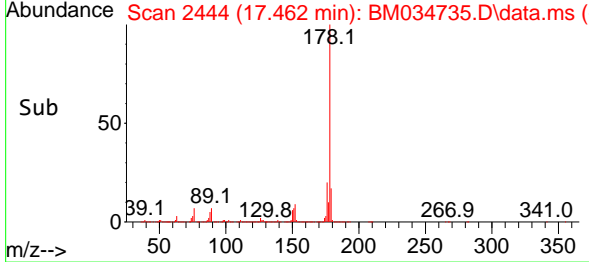
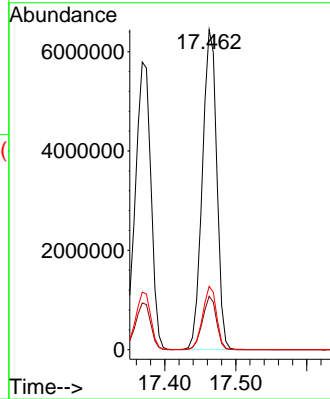


#72
 Phenanthrene
 Concen: 20.289 ng/u1
 RT: 17.462 min Scan# 2444
 Delta R.T. 0.100 min
 Lab File: BM034735.D
 Acq: 20 Apr 2022 21:59

Instrument :
 BNA_M
 ClientSampleId :
 SSTD160030

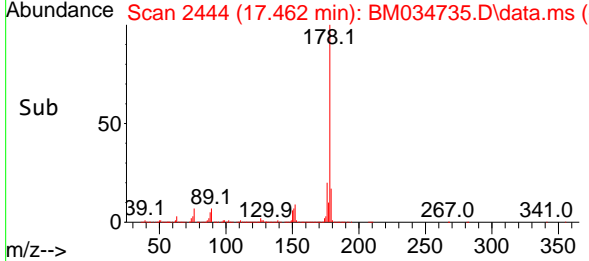
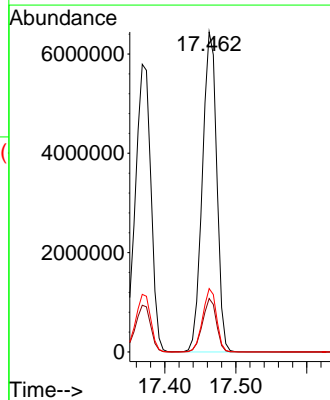
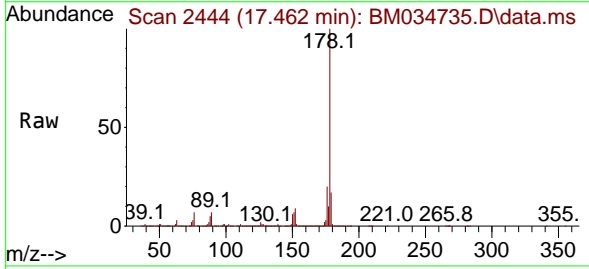


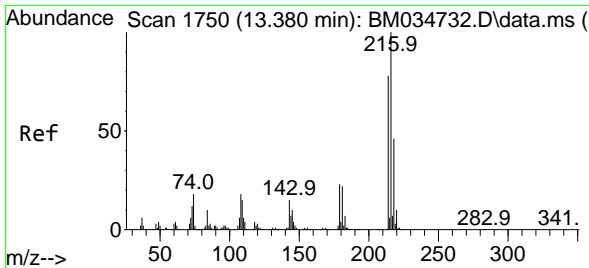
Tgt Ion:178 Resp: 9103770
 Ion Ratio Lower Upper
 178 100
 179 16.7 12.2 18.4
 176 19.8 15.0 22.6



#74
 Anthracene
 Concen: 19.994 ng/u1
 RT: 17.462 min Scan# 2444
 Delta R.T. 0.012 min
 Lab File: BM034735.D
 Acq: 20 Apr 2022 21:59

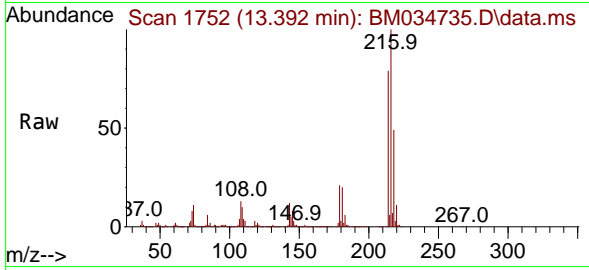
Tgt Ion:178 Resp: 9101868
 Ion Ratio Lower Upper
 178 100
 179 16.7 12.2 18.4
 176 19.8 14.6 22.0



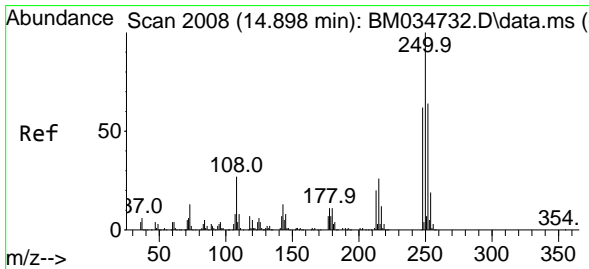
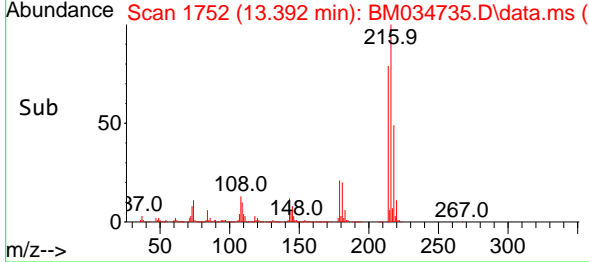
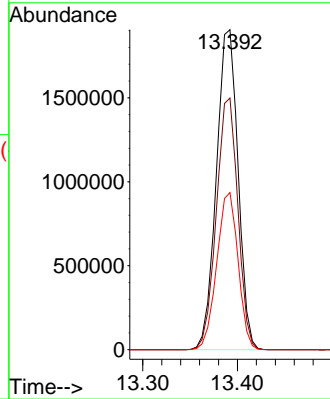


#75
 1,2,3,4-Tetrachlorobenzene
 Concen: 20.728 ng/uL
 RT: 13.392 min Scan# 1
 Delta R.T. 0.012 min
 Lab File: BM034735.D
 Acq: 20 Apr 2022 21:59

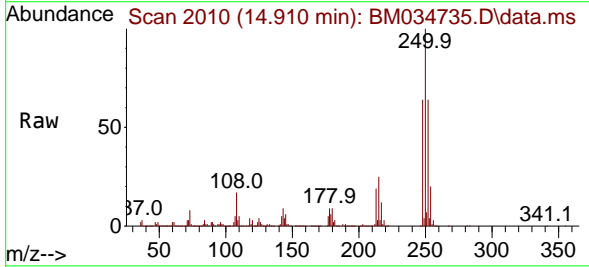
Instrument :
 BNA_M
 ClientSampleId :
 SSTD160030



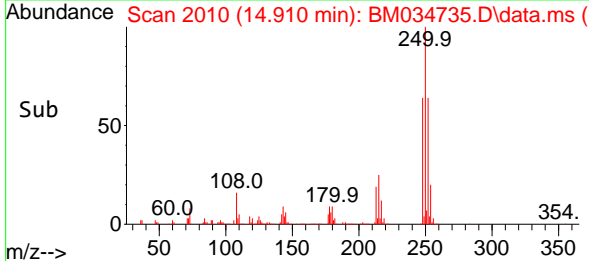
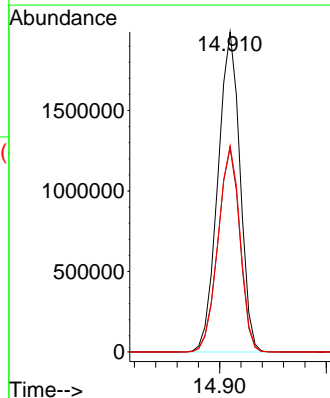
Tgt Ion:216 Resp: 3035430
 Ion Ratio Lower Upper
 216 100
 214 78.6 62.6 94.0
 218 49.1 37.1 55.7

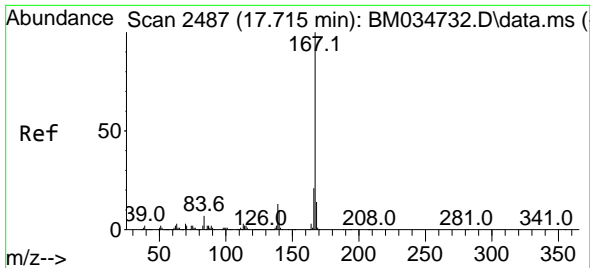


#76
 Pentachlorobenzene
 Concen: 21.178 ng/uL
 RT: 14.910 min Scan# 2010
 Delta R.T. 0.012 min
 Lab File: BM034735.D
 Acq: 20 Apr 2022 21:59



Tgt Ion:250 Resp: 2856763
 Ion Ratio Lower Upper
 250 100
 248 63.7 49.9 74.9
 252 64.4 51.5 77.3



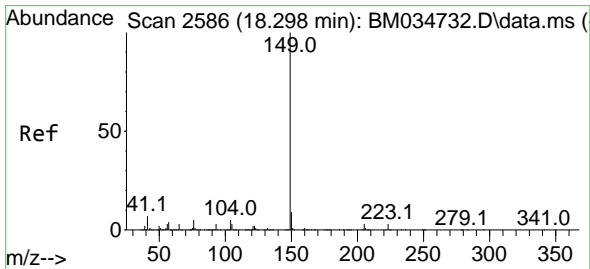
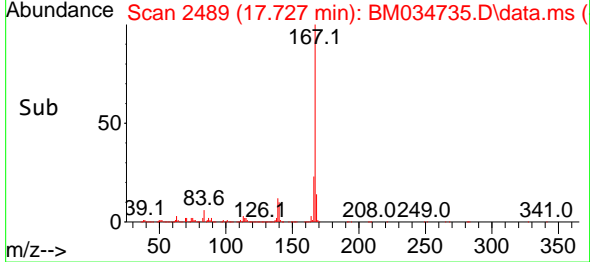
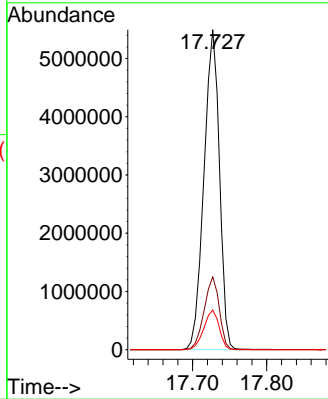
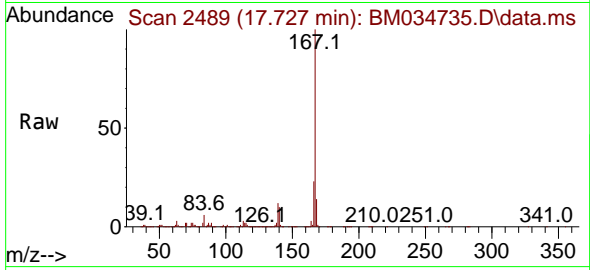


#77
 Carbazole
 Concen: 20.034 ng/u1
 RT: 17.727 min Scan# 2489
 Delta R.T. 0.012 min
 Lab File: BM034735.D
 Acq: 20 Apr 2022 21:59

Instrument : BNA_M
 ClientSampleId : SSTD160030

Tgt Ion:167 Resp: 7973020

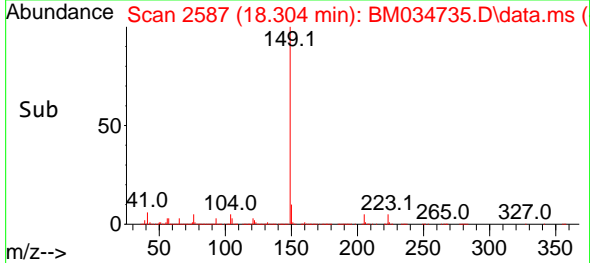
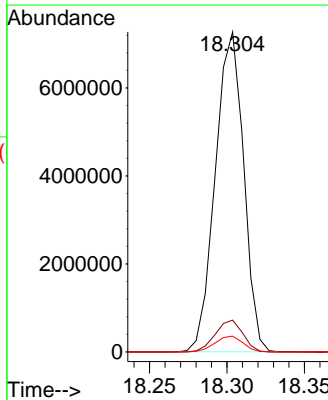
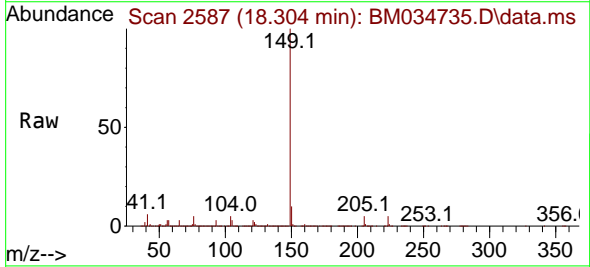
Ion	Ratio	Lower	Upper
167	100		
166	22.8	17.1	25.7
139	12.4	10.5	15.7

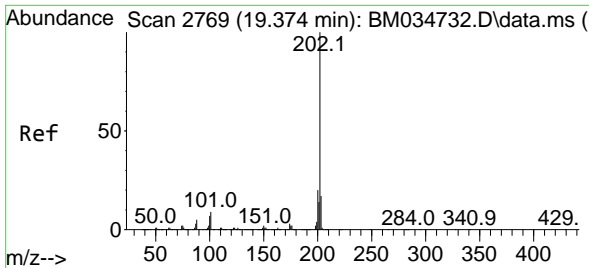


#78
 Di-n-butylphthalate
 Concen: 20.490 ng/u1
 RT: 18.304 min Scan# 2587
 Delta R.T. 0.006 min
 Lab File: BM034735.D
 Acq: 20 Apr 2022 21:59

Tgt Ion:149 Resp: 9249346

Ion	Ratio	Lower	Upper
149	100		
150	9.9	7.1	10.7
104	5.0	4.1	6.1



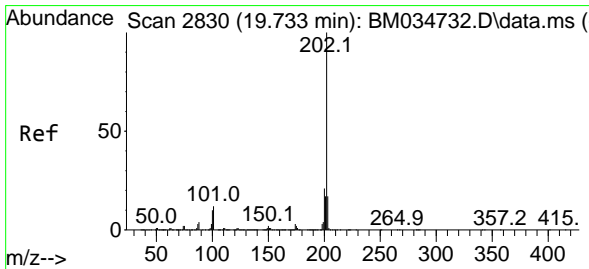
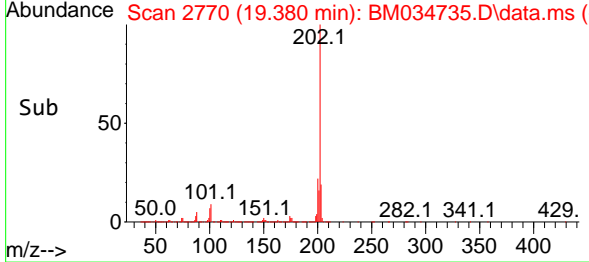
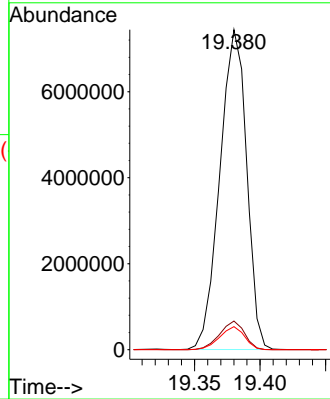
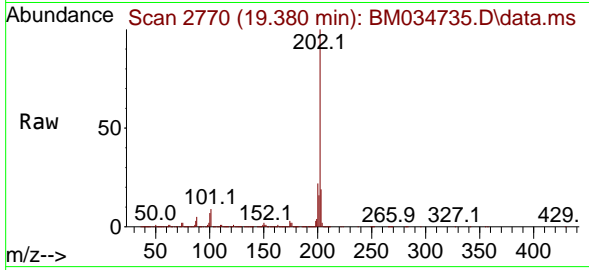


#80
 Fluoranthene
 Concen: 152.718 ng/u1
 RT: 19.380 min Scan# 21
 Delta R.T. 0.006 min
 Lab File: BM034735.D
 Acq: 20 Apr 2022 21:59

Instrument :
 BNA_M
 ClientSampleId :
 SSTD160030

Tgt Ion:202 Resp:10568724

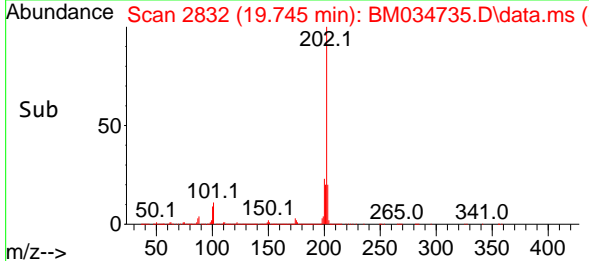
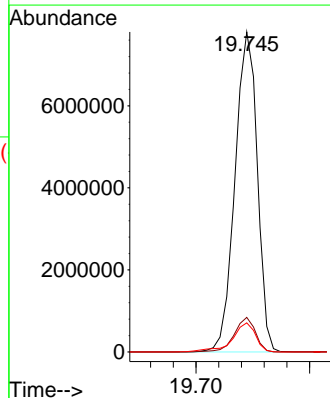
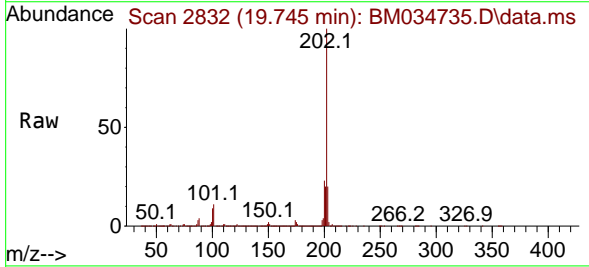
Ion	Ratio	Lower	Upper
202	100		
101	9.0	7.4	11.2
100	7.2	5.8	8.6

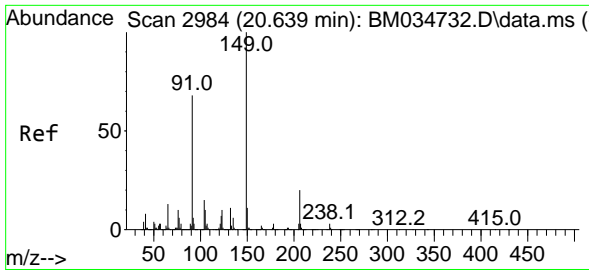


#82
 Pyrene
 Concen: 149.574 ng/u1
 RT: 19.745 min Scan# 2832
 Delta R.T. 0.012 min
 Lab File: BM034735.D
 Acq: 20 Apr 2022 21:59

Tgt Ion:202 Resp:10629450

Ion	Ratio	Lower	Upper
202	100		
101	10.8	9.4	14.0
100	9.1	7.8	11.6

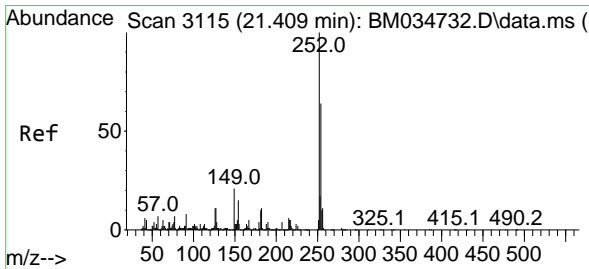
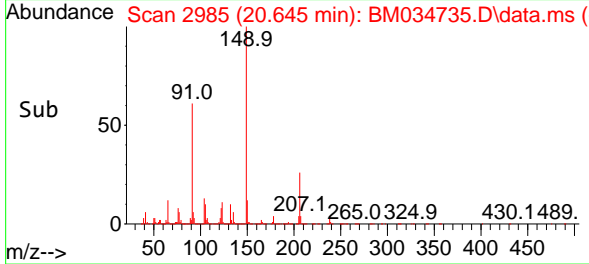
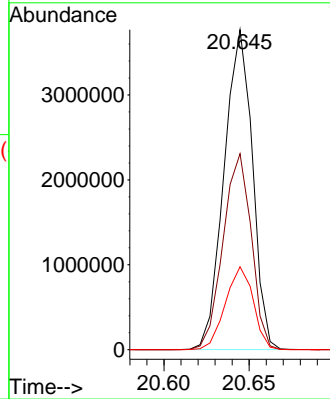
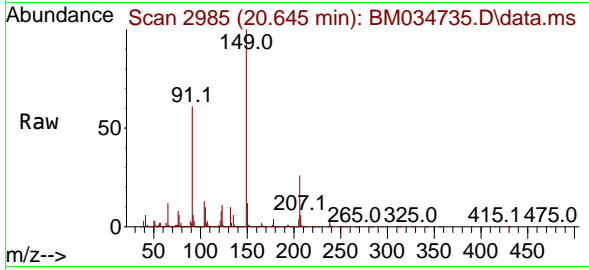




#83
 Butylbenzylphthalate
 Concen: 187.810 ng/ul
 RT: 20.645 min Scan# 2984
 Delta R.T. 0.006 min
 Lab File: BM034735.D
 Acq: 20 Apr 2022 21:59

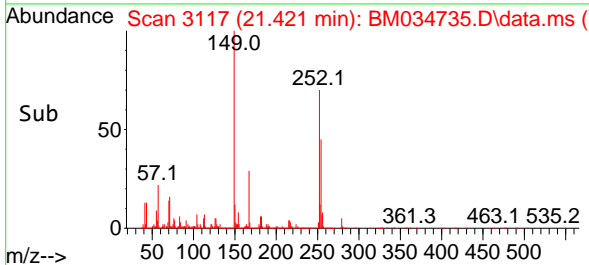
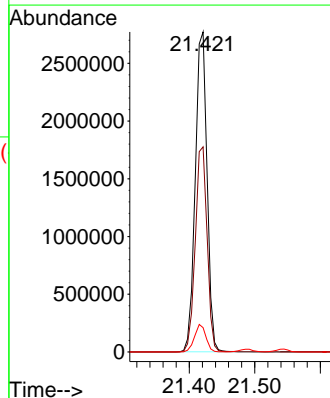
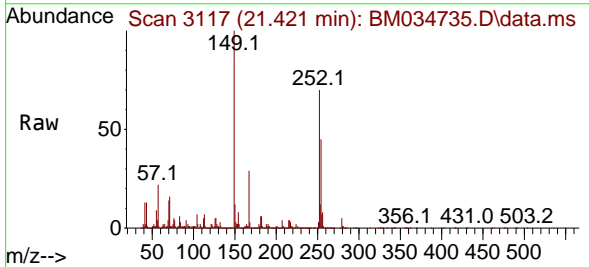
Instrument :
 BNA_M
 ClientSampleId :
 SSTD160030

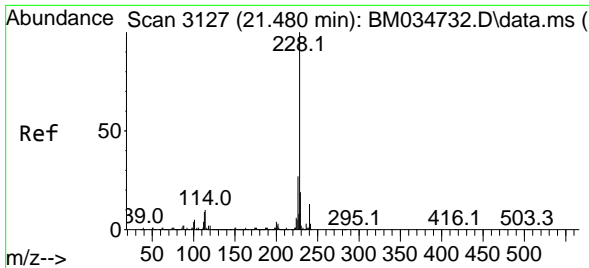
Tgt Ion:149 Resp: 4366976
 Ion Ratio Lower Upper
 149 100
 91 61.3 54.3 81.5
 206 25.9 15.8 23.6#



#84
 3,3'-Dichlorobenzidine
 Concen: 148.989 ng/ul
 RT: 21.421 min Scan# 3117
 Delta R.T. 0.012 min
 Lab File: BM034735.D
 Acq: 20 Apr 2022 21:59

Tgt Ion:252 Resp: 3468054
 Ion Ratio Lower Upper
 252 100
 254 64.1 51.0 76.4
 126 7.6 9.0 13.6#



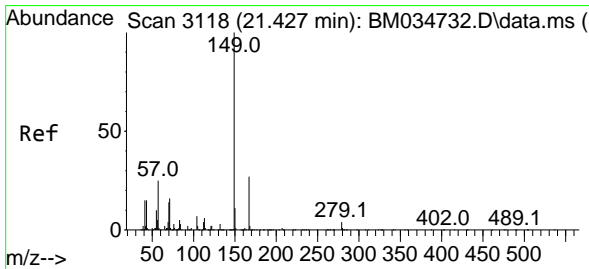
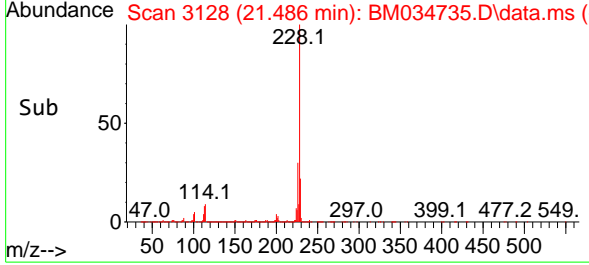
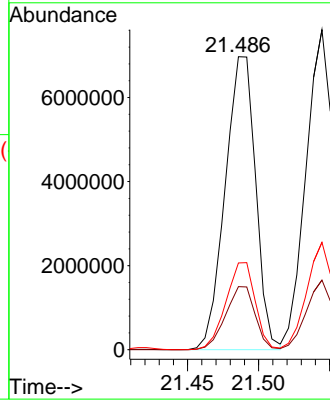
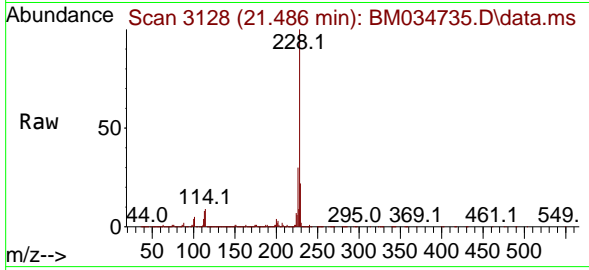


#85
 Benzo(a)anthracene
 Concen: 149.947 ng/uI
 RT: 21.486 min Scan# 3127
 Delta R.T. 0.006 min
 Lab File: BM034735.D
 Acq: 20 Apr 2022 21:59

Instrument : BNA_M
 ClientSampleId : SSTD160030

Tgt Ion:228 Resp:10440701

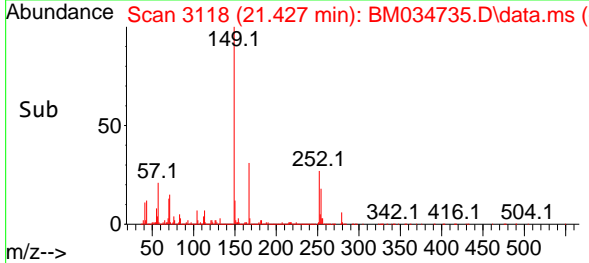
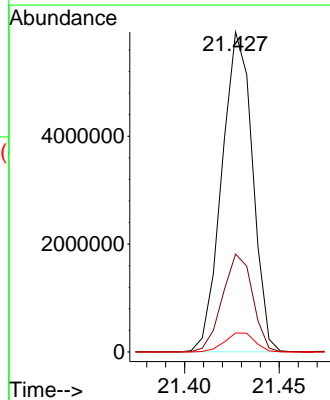
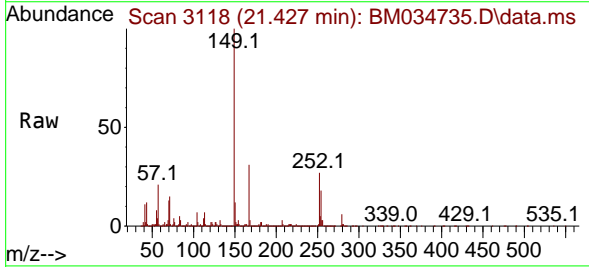
Ion	Ratio	Lower	Upper
228	100		
229	21.5	15.4	23.0
226	29.6	21.7	32.5

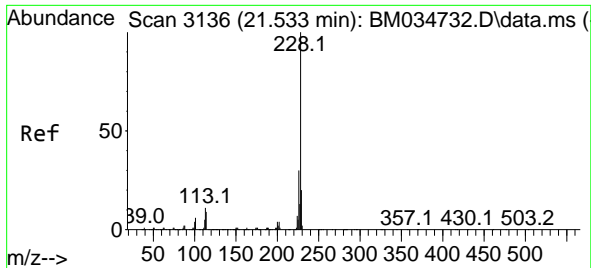


#86
 Bis(2-ethylhexyl)phthalate
 Concen: 180.143 ng/uI
 RT: 21.427 min Scan# 3118
 Delta R.T. 0.000 min
 Lab File: BM034735.D
 Acq: 20 Apr 2022 21:59

Tgt Ion:149 Resp: 6695329

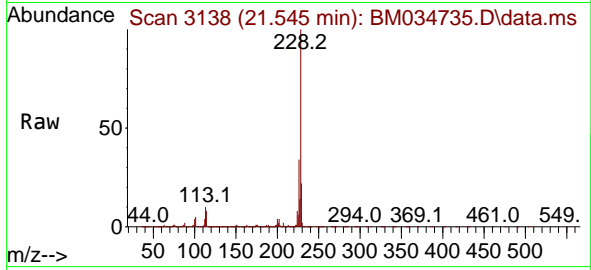
Ion	Ratio	Lower	Upper
149	100		
167	30.6	21.4	32.0
279	5.9	3.4	5.2#





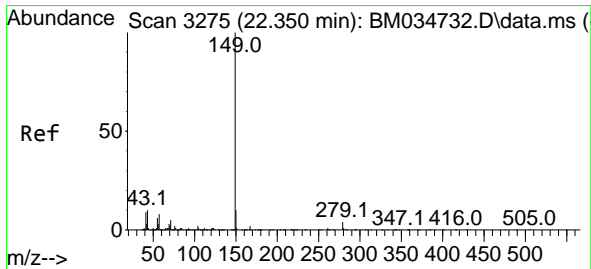
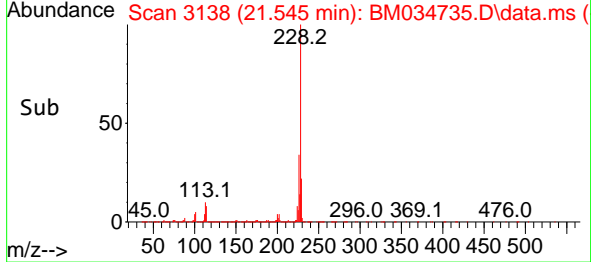
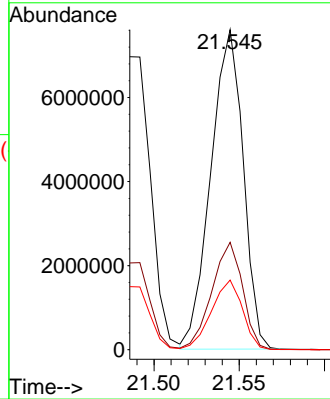
#87
 Chrysene
 Concen: 148.534 ng/uI
 RT: 21.545 min Scan# 3136
 Delta R.T. 0.012 min
 Lab File: BM034735.D
 Acq: 20 Apr 2022 21:59

Instrument :
 BNA_M
 ClientSampleId :
 SSTD160030



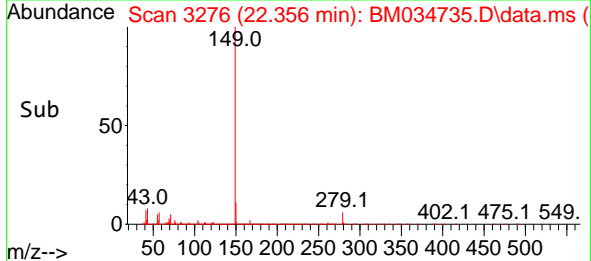
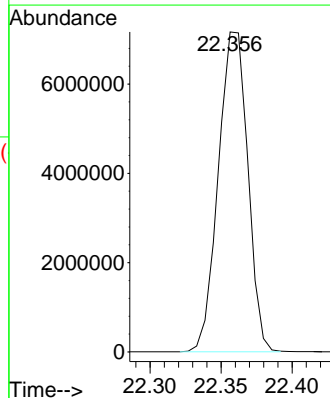
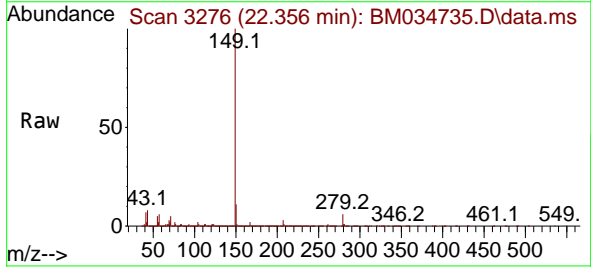
Tgt Ion:228 Resp:10056445

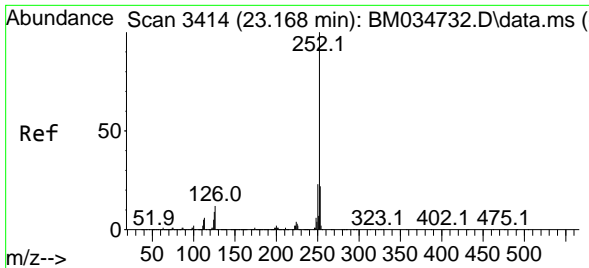
Ion	Ratio	Lower	Upper
228	100		
226	33.6	23.7	35.5
229	21.8	15.7	23.5



#89
 Di-n-octyl phthalate
 Concen: 160.311 ng/uI
 RT: 22.356 min Scan# 3276
 Delta R.T. 0.006 min
 Lab File: BM034735.D
 Acq: 20 Apr 2022 21:59

Tgt Ion:149 Resp:10347398

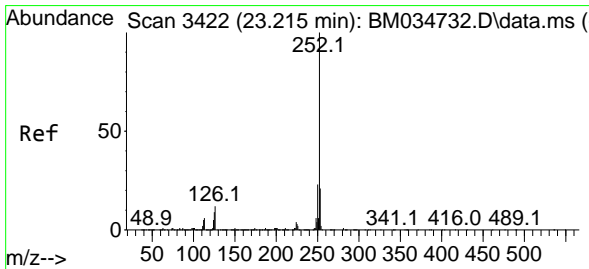
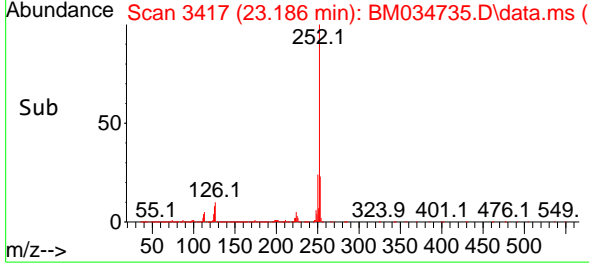
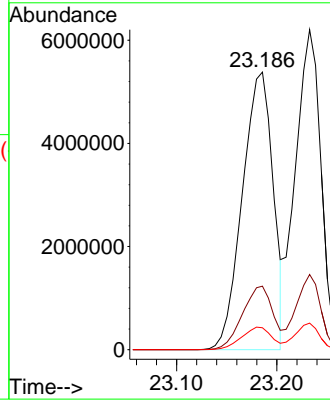
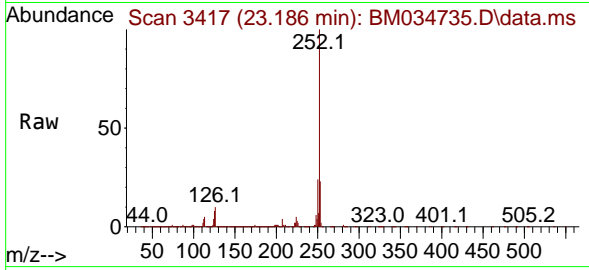




#90
 Benzo(b)fluoranthene
 Concen: 155.342 ng/u1
 RT: 23.186 min Scan# 3417
 Delta R.T. 0.018 min
 Lab File: BM034735.D
 Acq: 20 Apr 2022 21:59

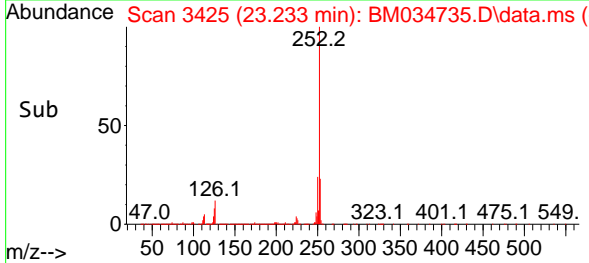
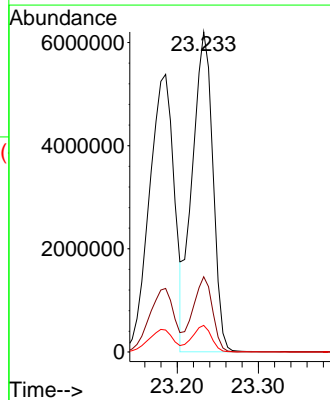
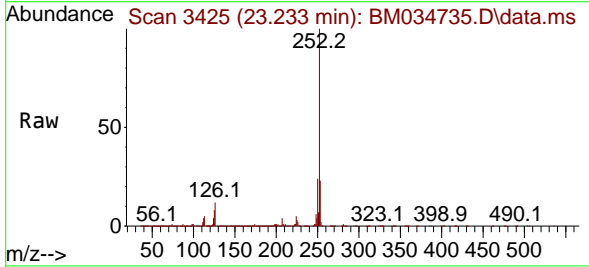
Instrument :
 BNA_M
 ClientSampleId :
 SSTD160030

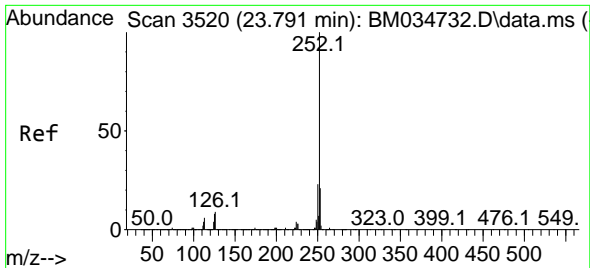
Tgt Ion:252 Resp:11468808
 Ion Ratio Lower Upper
 252 100
 253 22.9 17.4 26.0
 125 7.9 7.6 11.4



#91
 Benzo(k)fluoranthene
 Concen: 157.902 ng/u1
 RT: 23.233 min Scan# 3425
 Delta R.T. 0.018 min
 Lab File: BM034735.D
 Acq: 20 Apr 2022 21:59

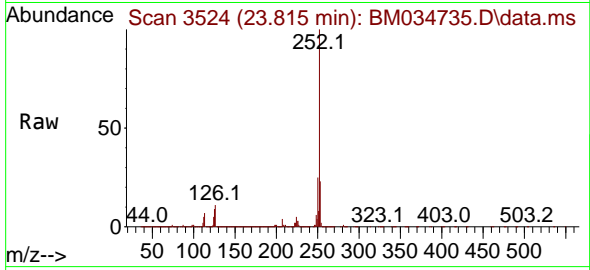
Tgt Ion:252 Resp:10936769
 Ion Ratio Lower Upper
 252 100
 253 23.5 17.4 26.2
 125 8.3 7.8 11.6



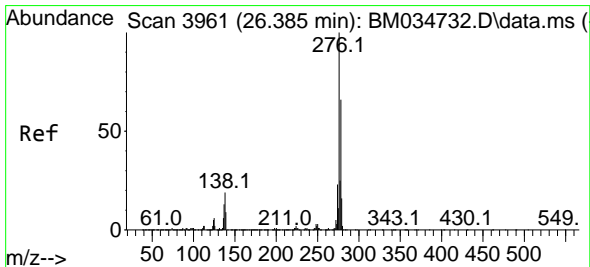
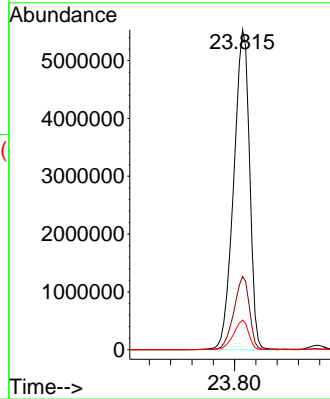
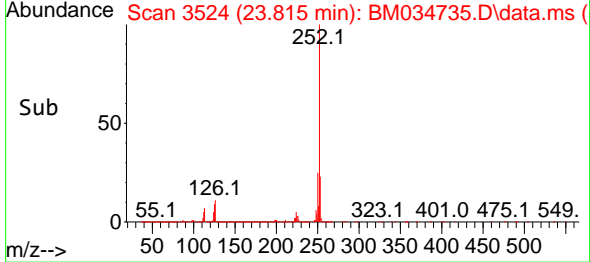


#93
 Benzo(a)pyrene
 Concen: 159.518 ng/u1
 RT: 23.815 min Scan# 31
 Delta R.T. 0.024 min
 Lab File: BM034735.D
 Acq: 20 Apr 2022 21:59

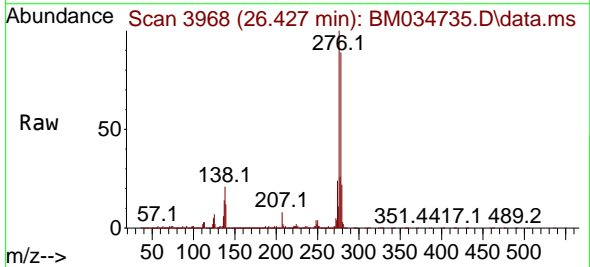
Instrument :
 BNA_M
 ClientSampleId :
 SSTD160030



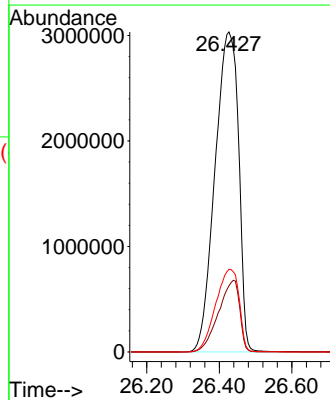
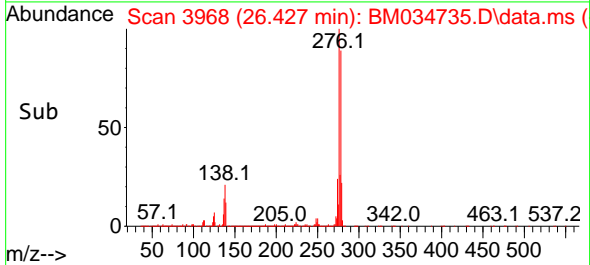
Tgt Ion:252 Resp:11400858
 Ion Ratio Lower Upper
 252 100
 253 22.9 16.6 25.0
 125 9.3 6.2 9.2#

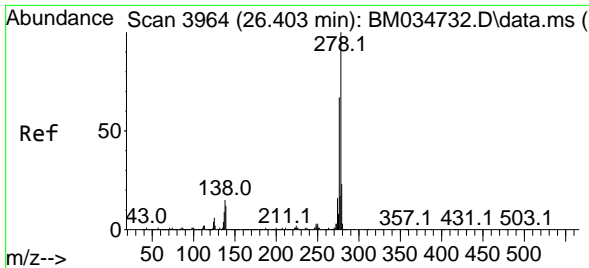


#94
 Indeno(1,2,3-cd)pyrene
 Concen: 159.384 ng/u1
 RT: 26.427 min Scan# 3968
 Delta R.T. 0.041 min
 Lab File: BM034735.D
 Acq: 20 Apr 2022 21:59



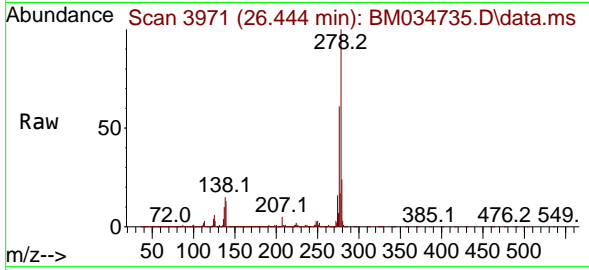
Tgt Ion:276 Resp:13692237
 Ion Ratio Lower Upper
 276 100
 138 20.7 15.3 22.9
 277 25.8 19.6 29.4



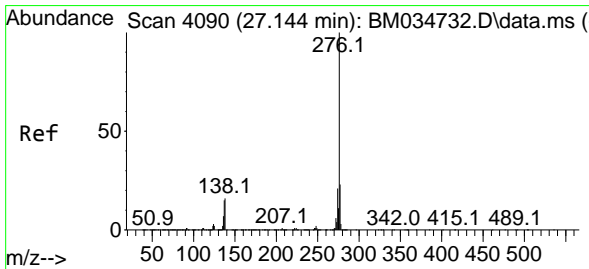
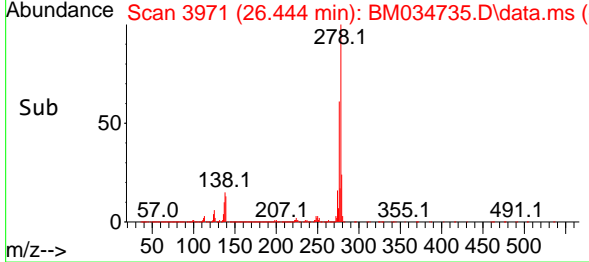
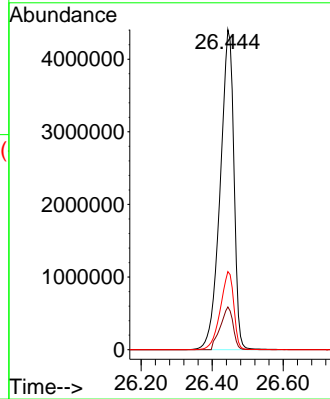


#95
 Dibenzo(a,h)anthracene
 Concen: 158.368 ng/ul
 RT: 26.444 min Scan# 3971
 Delta R.T. 0.041 min
 Lab File: BM034735.D
 Acq: 20 Apr 2022 21:59

Instrument : BNA_M
 ClientSampleId : SSTD160030



Tgt Ion:278 Resp:11718874
 Ion Ratio Lower Upper
 278 100
 139 13.3 9.7 14.5
 279 24.4 18.8 28.2



#96
 Benzo(g,h,i)perylene
 Concen: 157.757 ng/ul
 RT: 27.197 min Scan# 4099
 Delta R.T. 0.053 min
 Lab File: BM034735.D
 Acq: 20 Apr 2022 21:59

Tgt Ion:276 Resp:11587457
 Ion Ratio Lower Upper
 276 100
 138 17.0 13.0 19.6
 277 24.0 18.6 28.0

