

Data Path : Z:\svoasrv\HPCHEM1\BNA_M\Data\BM042223\
 Data File : BM039585.D
 Acq On : 22 Apr 2023 20:30
 Operator : CG/JU
 Sample : 02440-09
 Misc :
 ALS Vial : 13 Sample Multiplier: 1

Instrument :
 BNA_M
 ClientSampleId :
 COMQ4

Integration Parameters: LSCINT.P

Integrator: RTE
 Smoothing : OFF
 Sampling : 1
 Start Thrs : 0.2
 Stop Thrs : 0

Filtering: 5
 Min Area: 0.1 % of largest Peak
 Max Peaks: 100
 Peak Location: TOP

If leading or trailing edge < 100 prefer < Baseline drop else tangent >
 Peak separation: 5

Method : Z:\svoasrv\HPCHEM1\BNA_M\Methods\SFAM-EPA-BM041823.MA.M
 Title : SVOA CALIBRATION

Signal : TIC: BM039585.D\data.ms

peak #	R.T. min	first scan	max scan	last scan	PK TY	peak height	corr. area	corr. % max.	% of total
1	3.207	26	29	35	rVB	47306	63499	1.29%	0.134%
2	3.666	105	107	110	rBV	14694	16687	0.34%	0.035%
3	3.866	136	141	145	rVB	20441	31614	0.64%	0.067%
4	3.966	154	158	163	rVB2	16412	26755	0.54%	0.057%
5	5.372	394	397	401	rBV2	7565	10138	0.21%	0.021%
6	5.501	416	419	424	rVB	13920	18492	0.38%	0.039%
7	7.007	670	675	692	rBV	119693	291222	5.92%	0.617%
8	7.148	693	699	717	rVV	685868	1206113	24.51%	2.554%
9	7.354	727	734	755	rBV	666125	1241473	25.23%	2.629%
10	7.666	785	787	792	rVB6	3697	5981	0.12%	0.013%
11	7.819	805	813	832	rBV	682606	1217707	24.75%	2.578%
12	8.554	931	938	956	rBV	413534	898763	18.27%	1.903%
13	8.989	1005	1012	1032	rBV	812211	1513017	30.75%	3.204%
14	9.372	1075	1077	1081	rVB5	6490	6652	0.14%	0.014%
15	9.713	1128	1135	1155	rBV	654911	1282879	26.07%	2.716%
16	10.266	1222	1229	1256	rBV	647702	1640676	33.34%	3.474%
17	10.625	1282	1290	1302	rBV	971490	1679403	34.13%	3.556%
18	10.789	1312	1318	1337	rBV	55806	162380	3.30%	0.344%
19	12.236	1558	1564	1570	rBV4	8926	22300	0.45%	0.047%
20	13.289	1739	1743	1747	rBV6	5647	9266	0.19%	0.020%
21	13.372	1750	1757	1765	rVB	118694	197070	4.01%	0.417%
22	13.889	1838	1845	1862	rBV	1939967	2780834	56.52%	5.888%
23	14.171	1886	1893	1909	rBV	2082182	3280258	66.67%	6.945%
24	14.348	1917	1923	1929	rVB	37848	60950	1.24%	0.129%
25	14.477	1937	1945	1958	rBV	1381264	2091298	42.50%	4.428%
26	14.713	1980	1985	1988	rBV6	4088	5456	0.11%	0.012%
27	14.789	1992	1998	2000	rBV5	20144	38897	0.79%	0.082%
28	15.171	2059	2063	2066	rBV5	7685	11699	0.24%	0.025%
29	15.218	2066	2071	2083	rVV	666155	945357	19.21%	2.002%
30	15.307	2083	2086	2091	rVB7	6825	10901	0.22%	0.023%
31	15.471	2105	2114	2131	rBV	2654553	3977757	80.84%	8.422%
32	15.613	2132	2138	2152	rVV	697609	1216471	24.72%	2.576%
33	15.713	2152	2155	2164	rVB5	20260	38938	0.79%	0.082%
34	15.842	2171	2177	2191	rVB	176309	274793	5.58%	0.582%
35	16.160	2224	2231	2245	rBV2	40357	129107	2.62%	0.273%
36	16.254	2245	2247	2253	rVB6	4681	5831	0.12%	0.012%

Data Path : Z:\svoasrv\HPCHEM1\BNA_M\Data\BM042223\
 Data File : BM039585.D
 Acq On : 22 Apr 2023 20:30
 Operator : CG/JU
 Sample : 02440-09
 Misc :
 ALS Vial : 13 Sample Multiplier: 1

Instrument :
 BNA_M
 ClientSampleId :
 COMQ4

Integration Parameters: LSCINT.P

Integrator: RTE
 Smoothing : OFF Filtering: 5
 Sampling : 1 Min Area: 0.1 % of largest Peak
 Start Thrs: 0.2 Max Peaks: 100
 Stop Thrs : 0 Peak Location: TOP

If leading or trailing edge < 100 prefer < Baseline drop else tangent >
 Peak separation: 5

Method : Z:\svoasrv\HPCHEM1\BNA_M\Methods\SFAM-EPA-BM041823.MA.M
 Title : SVOA CALIBRATION

37	16.407	2269	2273	2277	rBV	12903	17430	0.35%	0.037%
38	16.554	2295	2298	2301	rBV3	5981	8382	0.17%	0.018%
39	17.136	2395	2397	2403	rVB6	5919	10556	0.21%	0.022%
40	17.230	2407	2413	2423	rBV	1515377	2240848	45.54%	4.745%
41	17.330	2423	2430	2446	rVV	2799768	4276320	86.91%	9.054%
42	17.901	2522	2527	2536	rBV6	27844	60934	1.24%	0.129%
43	18.130	2562	2566	2576	rBV	87057	195731	3.98%	0.414%
44	19.189	2742	2746	2754	rBV3	38413	60627	1.23%	0.128%
45	19.265	2755	2759	2763	rBV2	34479	59417	1.21%	0.126%
46	19.412	2780	2784	2790	rBV5	51713	111981	2.28%	0.237%
47	19.630	2815	2821	2837	rBV	3437523	4920312	100.00%	10.418%
48	21.424	3121	3126	3140	rBV	1474361	2180230	44.31%	4.616%
49	23.636	3495	3502	3515	rVB2	2199287	4522490	91.91%	9.576%
50	23.788	3522	3528	3543	rVB2	1023295	2152800	43.75%	4.558%

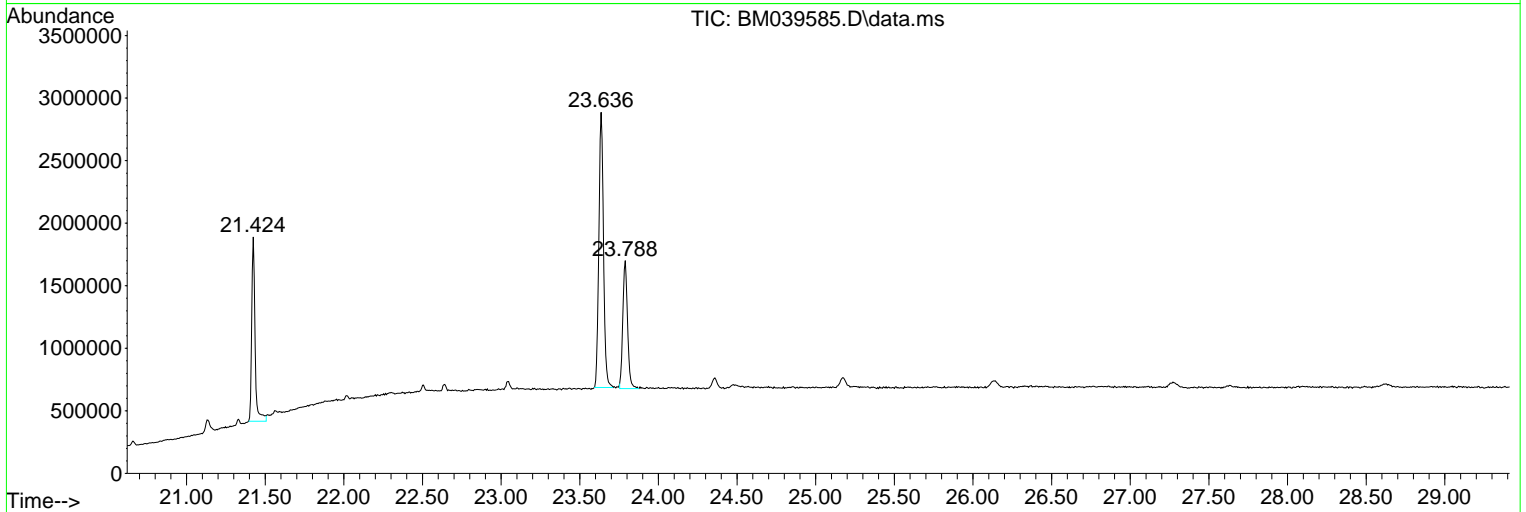
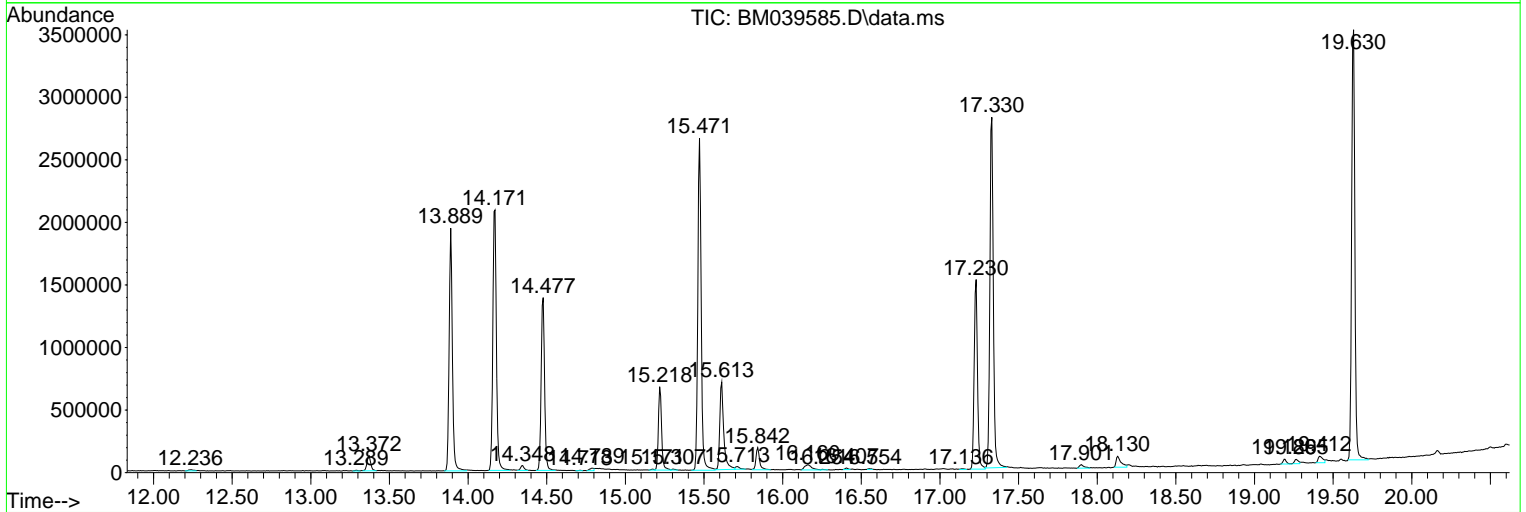
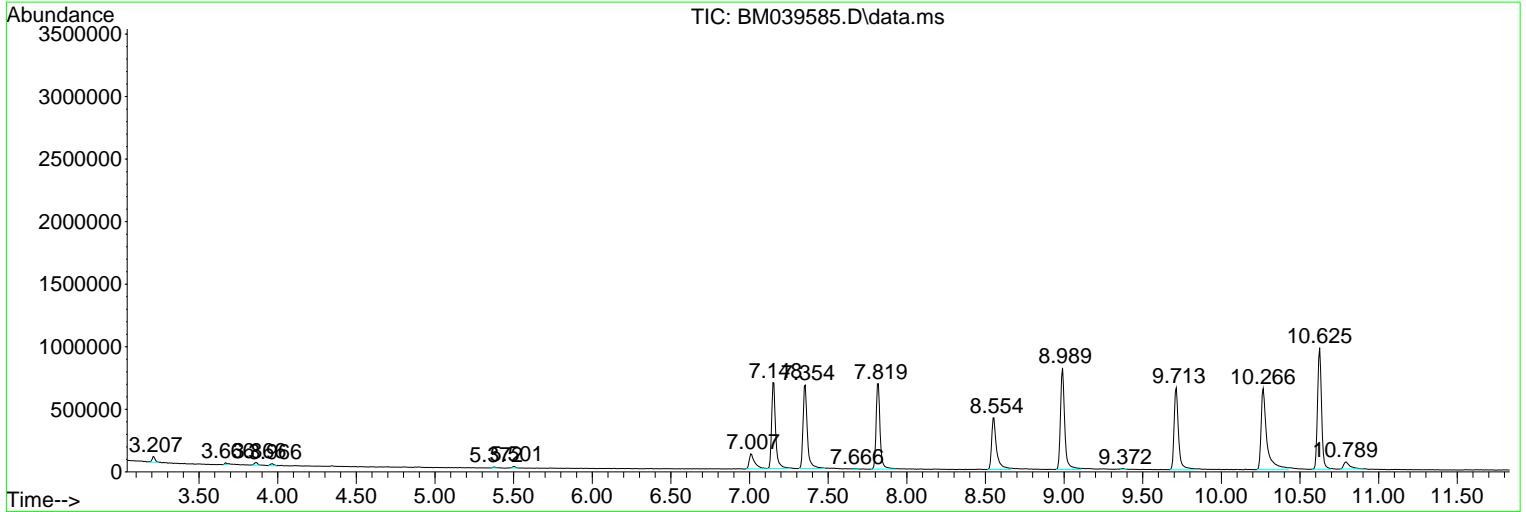
Sum of corrected areas: 47228692

Data Path : Z:\svoasrv\HPCHEM1\BNA_M\Data\BM042223\
 Data File : BM039585.D
 Acq On : 22 Apr 2023 20:30
 Operator : CG/JU
 Sample : 02440-09
 Misc :
 ALS Vial : 13 Sample Multiplier: 1

Instrument :
 BNA_M
ClientSampleId :
 COMQ4

Quant Method : Z:\svoasrv\HPCHEM1\BNA_M\Methods\SFAM-EPA-BM041823.MA.M
 Quant Title : SVOA CALIBRATION

TIC Library : C:\Database\NIST20.L
 TIC Integration Parameters: LSCINT.P



Data Path : Z:\svoasrv\HPCHEM1\BNA_M\Data\BM042223\
 Data File : BM039585.D
 Acq On : 22 Apr 2023 20:30
 Operator : CG/JU
 Sample : 02440-09
 Misc :
 ALS Vial : 13 Sample Multiplier: 1

Instrument :
 BNA_M
 ClientSampleId :
 COMQ4

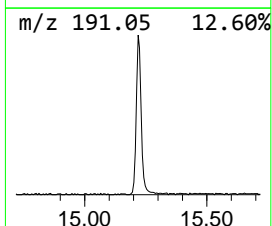
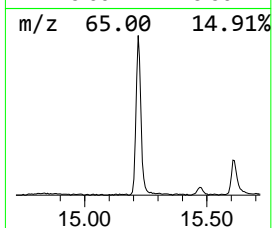
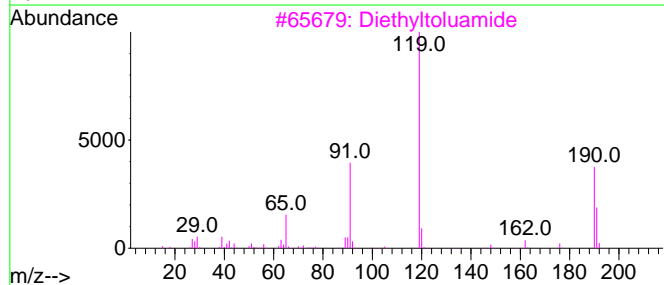
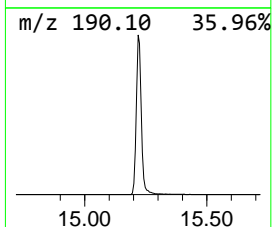
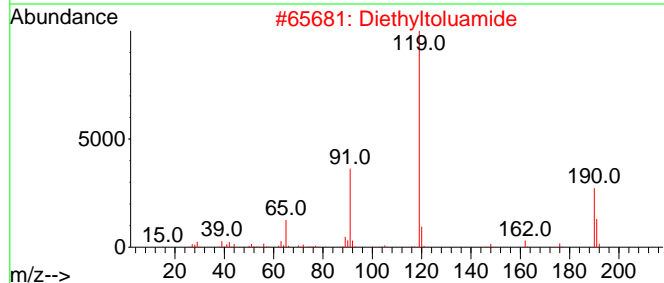
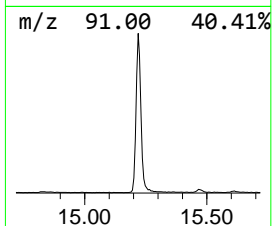
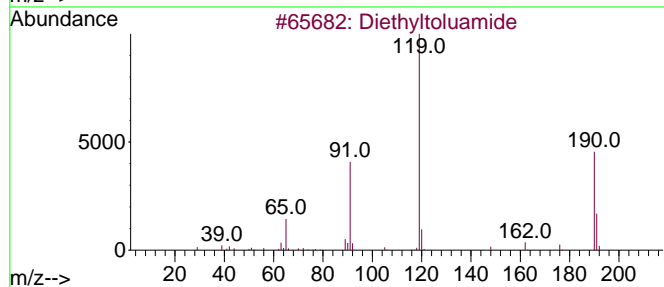
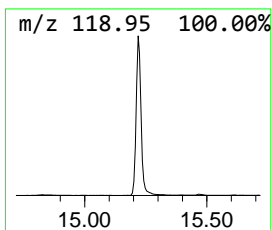
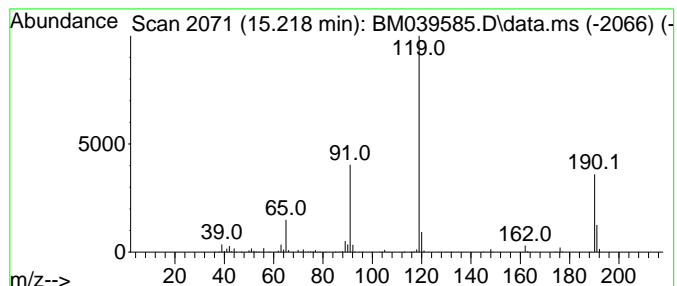
Quant Method : Z:\svoasrv\HPCHEM1\BNA_M\Methods\SFAM-EPA-BM041823.MA.M
 Quant Title : SVOA CALIBRATION

TIC Library : C:\Database\NIST20.L
 TIC Integration Parameters: LSCINT.P

 Peak Number 1 Diethyltoluamide Concentration Rank 1

R.T.	EstConc	Area	Relative to ISTD	R.T.
15.219	9.04 ng/ul	945357	Acenaphthene-d10	14.477

Hit#	of	5	Tentative ID	MW	MolForm	CAS#	Qual
1			Diethyltoluamide	191	C12H17NO	000134-62-3	97
2			Diethyltoluamide	191	C12H17NO	000134-62-3	96
3			Diethyltoluamide	191	C12H17NO	000134-62-3	95
4			Benzamide, 3-methyl-N-methyl-N-p...	191	C12H17NO	1000421-46-2	90
5			Benzamide, 2-methyl-N-methyl-N-p...	191	C12H17NO	1000421-44-4	87



Data Path : Z:\svoasrv\HPCHEM1\BNA_M\Data\BM042223\
 Data File : BM039585.D
 Acq On : 22 Apr 2023 20:30
 Operator : CG/JU
 Sample : 02440-09
 Misc :
 ALS Vial : 13 Sample Multiplier: 1

Instrument :
 BNA_M
 ClientSampleId :
 COMQ4

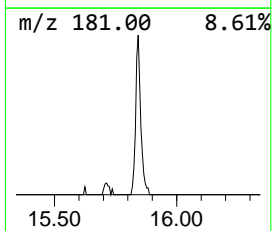
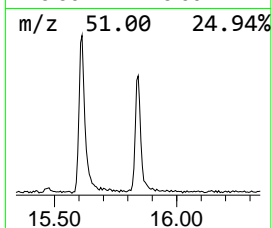
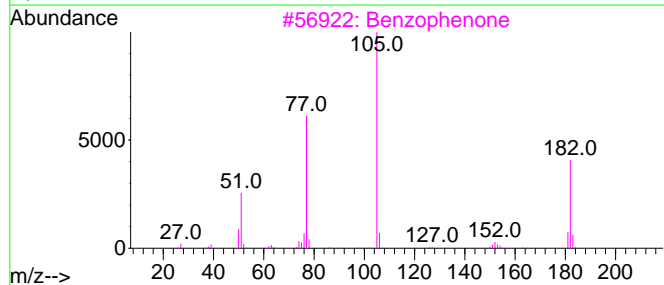
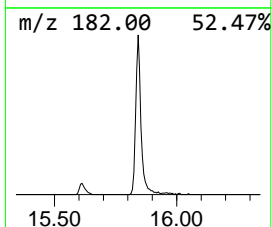
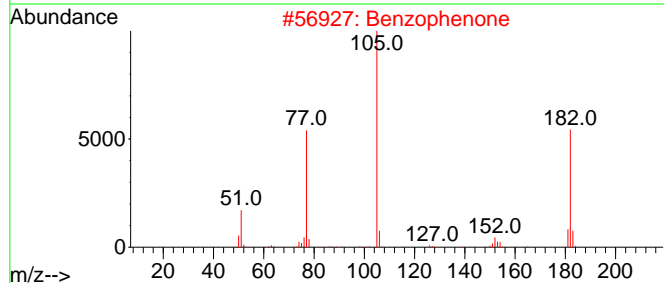
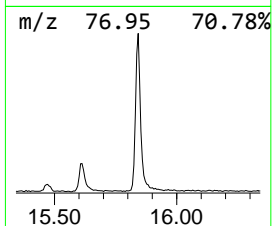
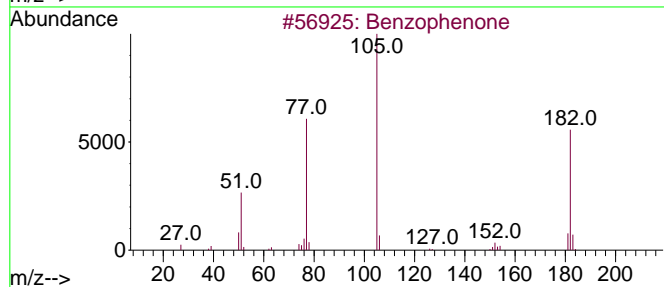
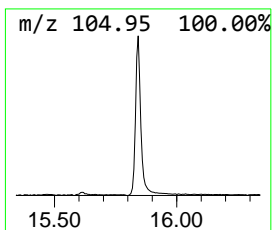
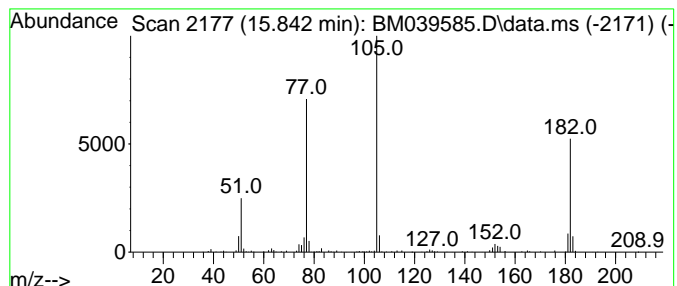
Quant Method : Z:\svoasrv\HPCHEM1\BNA_M\Methods\SFAM-EPA-BM041823.MA.M
 Quant Title : SVOA CALIBRATION

TIC Library : C:\Database\NIST20.L
 TIC Integration Parameters: LSCINT.P

 Peak Number 2 Benzophenone Concentration Rank 2

R.T.	EstConc	Area	Relative to ISTD	R.T.
15.842	2.63 ng/ul	274793	Acenaphthene-d10	14.477

Hit#	of	5	Tentative ID	MW	MolForm	CAS#	Qual
1			Benzophenone	182	C13H10O	000119-61-9	96
2			Benzophenone	182	C13H10O	000119-61-9	95
3			Benzophenone	182	C13H10O	000119-61-9	91
4			Benzophenone	182	C13H10O	000119-61-9	91
5			Benzophenone	182	C13H10O	000119-61-9	91



Data Path : Z:\svoasrv\HPCHEM1\BNA_M\Data\BM042223\
Data File : BM039585.D
Acq On : 22 Apr 2023 20:30
Operator : CG/JU
Sample : 02440-09
Misc :
ALS Vial : 13 Sample Multiplier: 1

Instrument :
BNA_M
ClientSampleId :
COMQ4

Quant Method : Z:\svoasrv\HPCHEM1\BNA_M\Methods\SFAM-EPA-BM041823.MA.M
Quant Title : SVOA CALIBRATION

TIC Library : C:\Database\NIST20.L
TIC Integration Parameters: LSCINT.P

TIC Top Hit name	RT	EstConc	Units	Response	--Internal Standard--			
					#	RT	Resp	Conc
Diethyltoluamide	15.219	9.0	ng/u1	945357	3	14.477	2091300	20.0
Benzophenone	15.842	2.6	ng/u1	274793	3	14.477	2091300	20.0