

Data Path : Z:\svoasrv\HPCHEM1\BNA_M\Data\BM043025\
 Data File : BM050058.D
 Acq On : 30 Apr 2025 23:54
 Operator : RC/JU
 Sample : Q1883-13
 Misc :
 ALS Vial : 12 Sample Multiplier: 1

Instrument :
 BNA_M
 ClientSampleId :
 OU4-VSL-18-042325

Integration Parameters: rteint.p
 Integrator: RTE
 Smoothing : ON Filtering: 5
 Sampling : 1 Min Area: 3 % of largest Peak
 Start Thrs: 0.2 Max Peaks: 100
 Stop Thrs : 0 Peak Location: TOP

If leading or trailing edge < 100 prefer < Baseline drop else tangent >
 Peak separation: 5

Method : Z:\svoasrv\HPCHEM1\BNA_M\Methods\8270-BM042825.M
 Title : ASP BNA STANDARDS FOR 5 POINT CALIBRATION

Signal : TIC: BM050058.D\data.ms

peak #	R.T. min	first scan	max scan	last scan	PK TY	peak height	corr. area	corr. % max.	% of total
1	4.887	317	323	330	rBV	225109	343081	3.44%	0.716%
2	5.351	396	402	422	rBV	2475782	3827294	38.38%	7.989%
3	6.946	666	673	695	rBV	2188741	3921688	39.33%	8.186%
4	7.763	805	812	824	rBV	850262	1355481	13.59%	2.829%
5	8.922	1002	1009	1027	rBV	1251692	2395735	24.03%	5.001%
6	10.557	1280	1287	1302	rBV	810851	1689378	16.94%	3.526%
7	13.027	1699	1707	1723	rBV	3889162	6323971	63.42%	13.200%
8	14.410	1933	1942	1958	rBV	1497670	2427695	24.35%	5.067%
9	15.768	2163	2173	2189	rBV	897210	1396903	14.01%	2.916%
10	15.904	2189	2196	2217	rBV	2853253	4763297	47.77%	9.942%
11	16.333	2258	2269	2279	rBV	107497	194347	1.95%	0.406%
12	17.157	2402	2409	2423	rBV	1640397	2758437	27.66%	5.758%
13	18.051	2555	2561	2571	rBV	158063	299853	3.01%	0.626%
14	19.774	2849	2854	2866	rBV	8148286	9971319	100.00%	20.813%
15	21.068	3070	3074	3082	rBV4	125707	256357	2.57%	0.535%
16	21.392	3124	3129	3143	rBV	1752204	2976136	29.85%	6.212%
17	24.391	3631	3639	3657	rVB	1075549	3007732	30.16%	6.278%

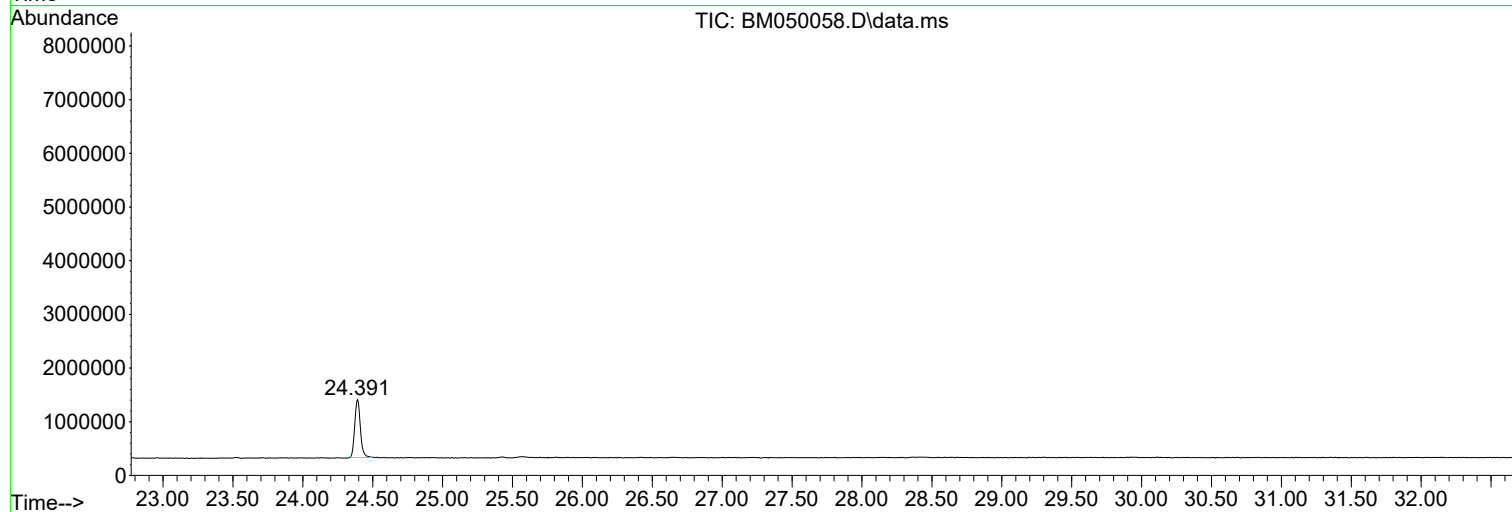
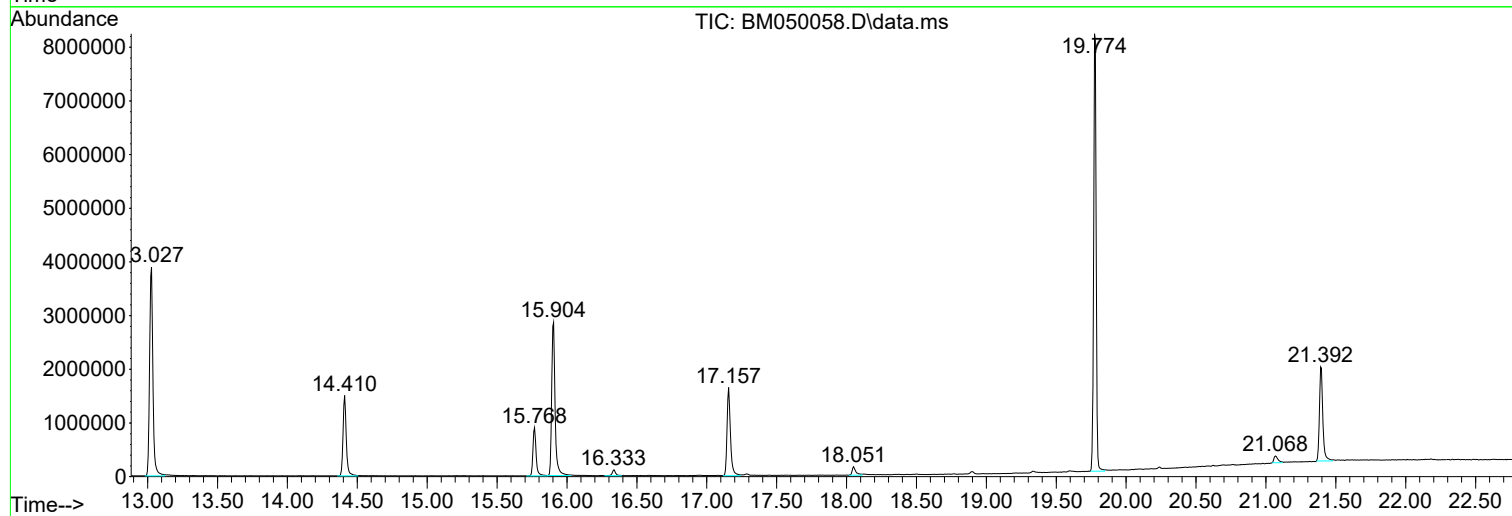
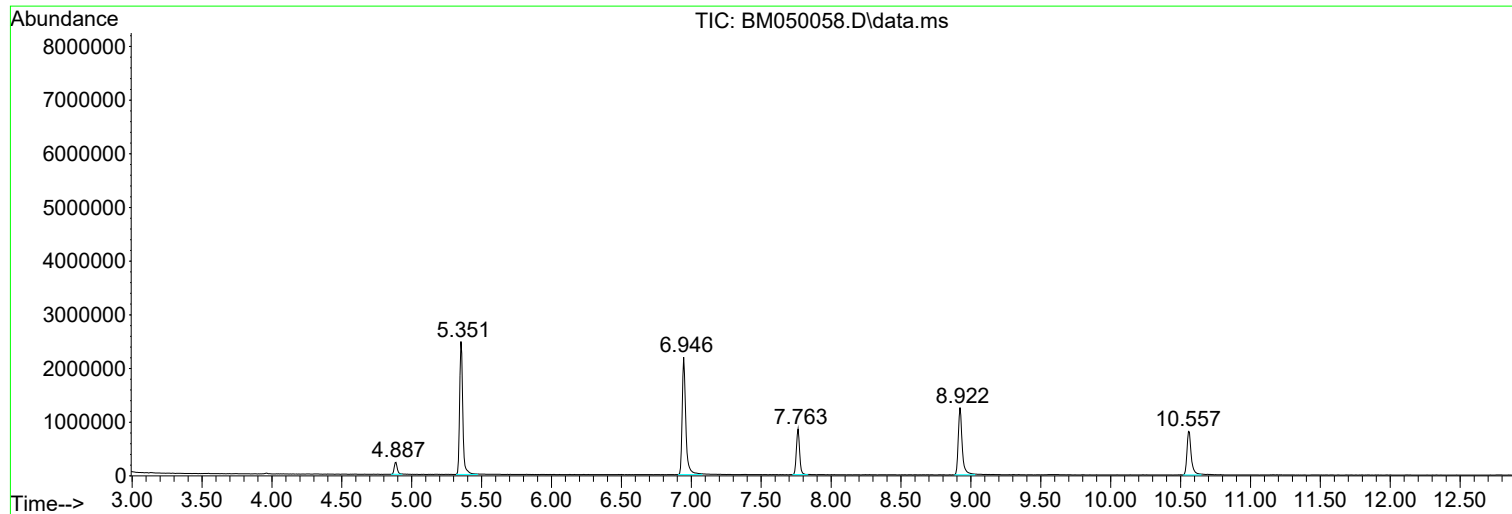
Sum of corrected areas: 47908704

Data Path : Z:\svoasrv\HPCHEM1\BNA_M\Data\BM043025\
Data File : BM050058.D
Acq On : 30 Apr 2025 23:54
Operator : RC/JU
Sample : Q1883-13
Misc :
ALS Vial : 12 Sample Multiplier: 1

Instrument :
BNA_M
ClientSampleId :
OU4-VSL-18-042325

Quant Method : Z:\svoasrv\HPCHEM1\BNA_M\Methods\8270-BM042825.M
Quant Title : ASP BNA STANDARDS FOR 5 POINT CALIBRATION

TIC Library : C:\Database\NIST20.L
TIC Integration Parameters: LSCINT.P



Data Path : Z:\svoasrv\HPCHEM1\BNA_M\Data\BM043025\
 Data File : BM050058.D
 Acq On : 30 Apr 2025 23:54
 Operator : RC/JU
 Sample : Q1883-13
 Misc :
 ALS Vial : 12 Sample Multiplier: 1

Instrument :
 BNA_M
 ClientSampleId :
 OU4-VSL-18-042325

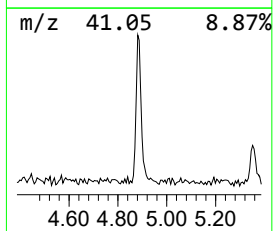
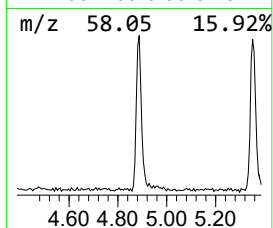
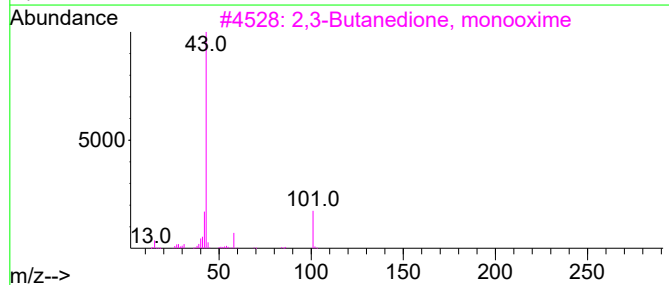
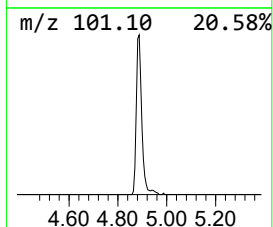
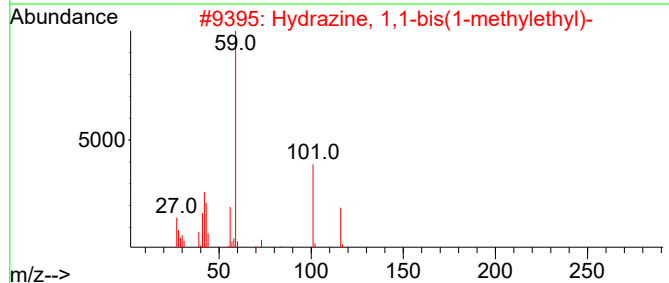
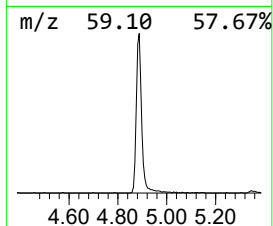
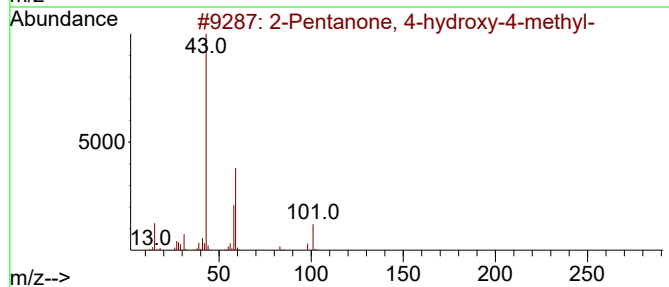
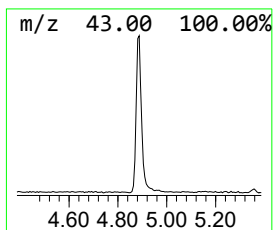
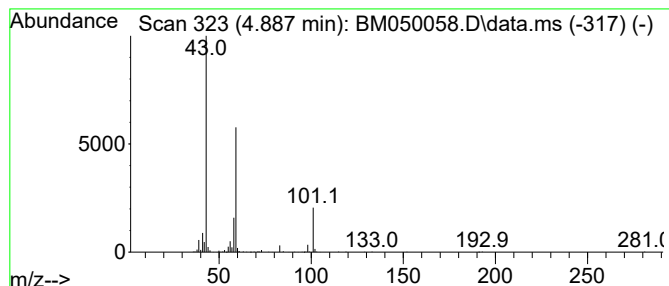
Quant Method : Z:\svoasrv\HPCHEM1\BNA_M\Methods\8270-BM042825.M
 Quant Title : ASP BNA STANDARDS FOR 5 POINT CALIBRATION

TIC Library : C:\Database\NIST20.L
 TIC Integration Parameters: LSCINT.P

 Peak Number 1 2-Pentanone, 4-hydroxy-4-me... Concentration Rank 2

R.T.	EstConc	Area	Relative to ISTD	R.T.
4.887	5.06 ng	343081	1,4-Dichlorobenzene-d4	7.763

Hit#	of 5	Tentative ID	MW	MolForm	CAS#	Qual
1		2-Pentanone, 4-hydroxy-4-methyl-	116	C6H12O2	000123-42-2	50
2		Hydrazine, 1,1-bis(1-methylethyl)-	116	C6H16N2	000921-14-2	28
3		2,3-Butanedione, monooxime	101	C4H7NO2	000057-71-6	25
4		1,3-Dioxolane-2-methanol, 2,4-di...	132	C6H12O3	053951-43-2	25
5		Tetraglyme	222	C10H22O5	000143-24-8	23



Data Path : Z:\svoasrv\HPCHEM1\BNA_M\Data\BM043025\
 Data File : BM050058.D
 Acq On : 30 Apr 2025 23:54
 Operator : RC/JU
 Sample : Q1883-13
 Misc :
 ALS Vial : 12 Sample Multiplier: 1

Instrument :
 BNA_M
 ClientSampleId :
 OU4-VSL-18-042325

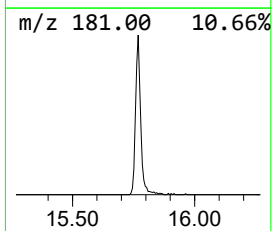
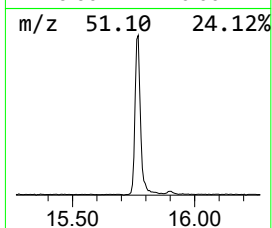
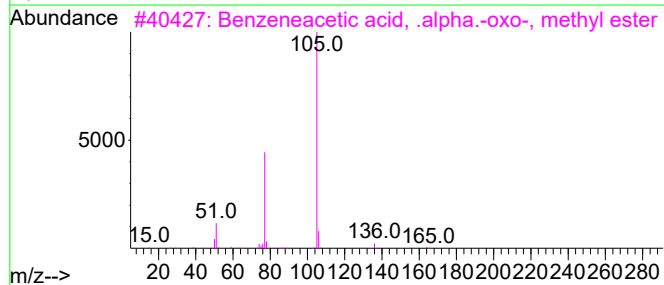
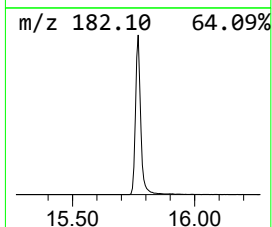
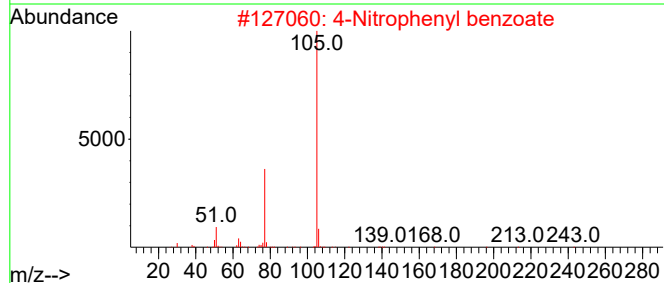
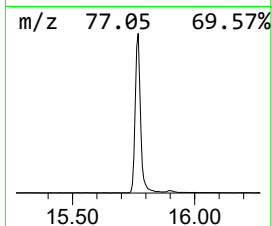
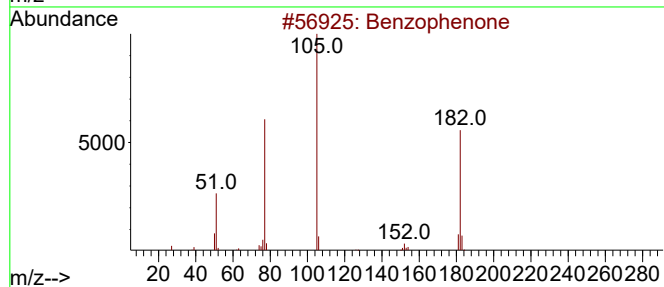
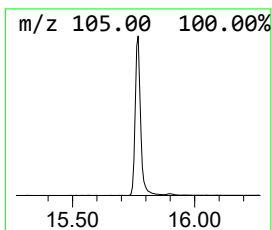
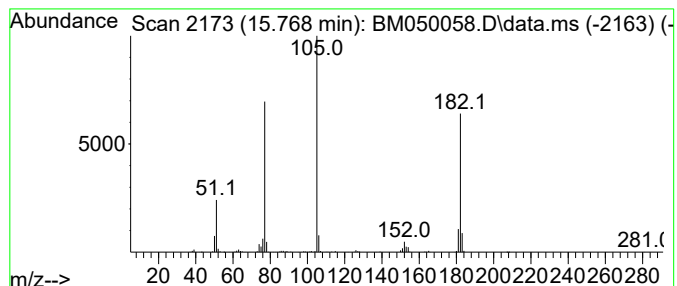
Quant Method : Z:\svoasrv\HPCHEM1\BNA_M\Methods\8270-BM042825.M
 Quant Title : ASP BNA STANDARDS FOR 5 POINT CALIBRATION

TIC Library : C:\Database\NIST20.L
 TIC Integration Parameters: LSCINT.P

 Peak Number 2 Benzophenone Concentration Rank 1

R.T.	EstConc	Area	Relative to ISTD	R.T.
15.769	11.51 ng	1396900	Acenaphthene-d10	14.410

Hit#	of	5	Tentative ID	MW	MolForm	CAS#	Qual
1			Benzophenone	182	C13H10O	000119-61-9	96
2			4-Nitrophenyl benzoate	243	C13H9NO4	000959-22-8	47
3			Benzeneacetic acid, .alpha.-oxo-...	164	C9H8O3	015206-55-0	47
4			N-(1-Cyanovinyl)benzamide	172	C10H8N2O	1000186-19-1	47
5			1-Propanone, 2-bromo-1-phenyl-	212	C9H9BrO	002114-00-3	47



Data Path : Z:\svoasrv\HPCHEM1\BNA_M\Data\BM043025\
 Data File : BM050058.D
 Acq On : 30 Apr 2025 23:54
 Operator : RC/JU
 Sample : Q1883-13
 Misc :
 ALS Vial : 12 Sample Multiplier: 1

Instrument :
 BNA_M
 ClientSampleId :
 OU4-VSL-18-042325

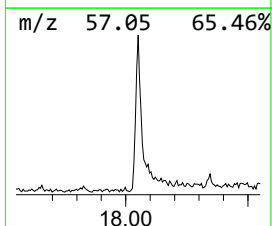
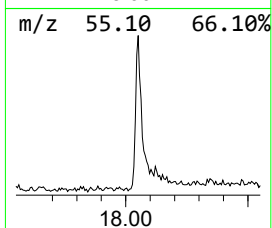
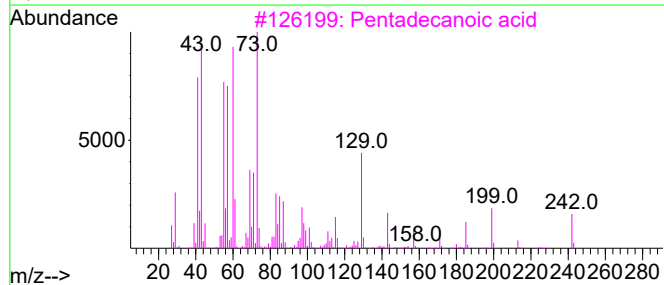
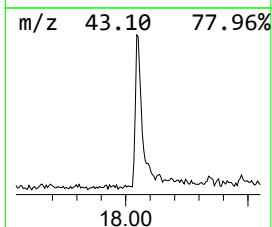
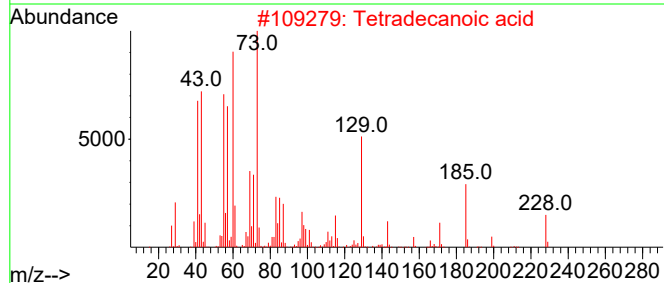
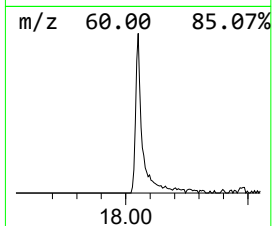
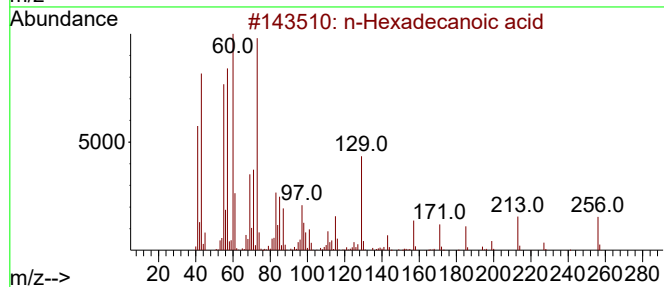
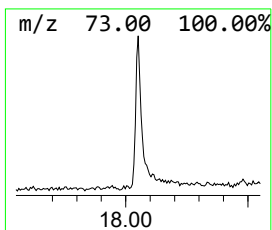
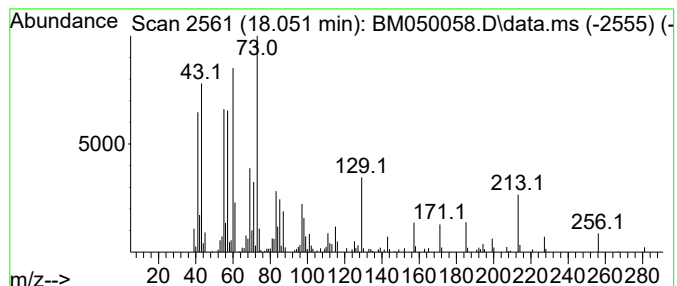
Quant Method : Z:\svoasrv\HPCHEM1\BNA_M\Methods\8270-BM042825.M
 Quant Title : ASP BNA STANDARDS FOR 5 POINT CALIBRATION

TIC Library : C:\Database\NIST20.L
 TIC Integration Parameters: LSCINT.P

 Peak Number 3 n-Hexadecanoic acid Concentration Rank 3

R.T.	EstConc	Area	Relative to ISTD	R.T.
18.051	2.17 ng	299853	Phenanthrene-d10	17.157

Hit#	of	5	Tentative ID	MW	MolForm	CAS#	Qual
1			n-Hexadecanoic acid	256	C16H32O2	000057-10-3	98
2			Tetradecanoic acid	228	C14H28O2	000544-63-8	95
3			Pentadecanoic acid	242	C15H30O2	001002-84-2	87
4			Tridecanoic acid	214	C13H26O2	000638-53-9	76
5			Nonanoic acid	158	C9H18O2	000112-05-0	49



Data Path : Z:\svoasrv\HPCHEM1\BNA_M\Data\BM043025\
Data File : BM050058.D
Acq On : 30 Apr 2025 23:54
Operator : RC/JU
Sample : Q1883-13
Misc :
ALS Vial : 12 Sample Multiplier: 1

Instrument :
BNA_M
ClientSampleId :
OU4-VSL-18-042325

Quant Method : Z:\svoasrv\HPCHEM1\BNA_M\Methods\8270-BM042825.M
Quant Title : ASP BNA STANDARDS FOR 5 POINT CALIBRATION

TIC Library : C:\Database\NIST20.L
TIC Integration Parameters: LSCINT.P

TIC Top Hit name	RT	EstConc	Units	Response	--Internal Standard--			
					#	RT	Resp	Conc
2-Pentanone, 4-...	4.887	5.1	ng	343081	1	7.763	1355480	20.0
Benzophenone	15.769	11.5	ng	1396900	3	14.410	2427700	20.0
n-Hexadecanoic ...	18.051	2.2	ng	299853	4	17.157	2758440	20.0