

Data Path : Z:\SVOASRV\HPCHEM1\BNA M\DATA\BM050319\
 Data File : BM020111.D
 Acq On : 03 May 2019 14:40
 Operator : JU/SJ
 Sample : K2617-04DL 5X
 Misc :
 ALS Vial : 5 Sample Multiplier: 1

Instrument :
 BNA_M
 ClientSampleId :
 SUMP-PITDL

Quant Time: May 03 16:06:38 2019
 Quant Method : Z:\SVOASRV\HPCHEM1\BNA M\METHODS\8270-BM043019.M
 Quant Title : ASP BNA STANDARDS FOR 5 POINT CALIBRATION
 QLast Update : Wed May 01 03:58:37 2019
 Response via : Initial Calibration

Internal Standards	R.T.	QIon	Response	Conc	Units	Dev(Min)
1) 1,4-Dichlorobenzene-d4	7.79	152	96736	20.00	ng	0.00
21) Naphthalene-d8	10.58	136	398329	20.00	ng	0.00
39) Acenaphthene-d10	14.43	164	277397	20.00	ng	0.00
64) Phenanthrene-d10	17.18	188	707507	20.00	ng	0.00
76) Chrysene-d12	21.36	240	739377	20.00	ng	0.00
87) Perylene-d12	23.64	264	833634	20.00	ng	-0.01

System Monitoring Compounds

5) 2-Fluorophenol	5.36	112	104796	17.71	ng	0.00
7) Phenol-d6	6.94	99	108278	13.39	ng	-0.01
23) Nitrobenzene-d5	8.95	82	185682	18.40	ng	-0.01
42) 2,4,6-Tribromophenol	15.92	330	126063	29.28	ng	0.00
45) 2-Fluorobiphenyl	13.05	172	419426	18.60	ng	-0.01
79) Terphenyl-d14	19.80	244	824714	19.46	ng	0.00

Target Compounds

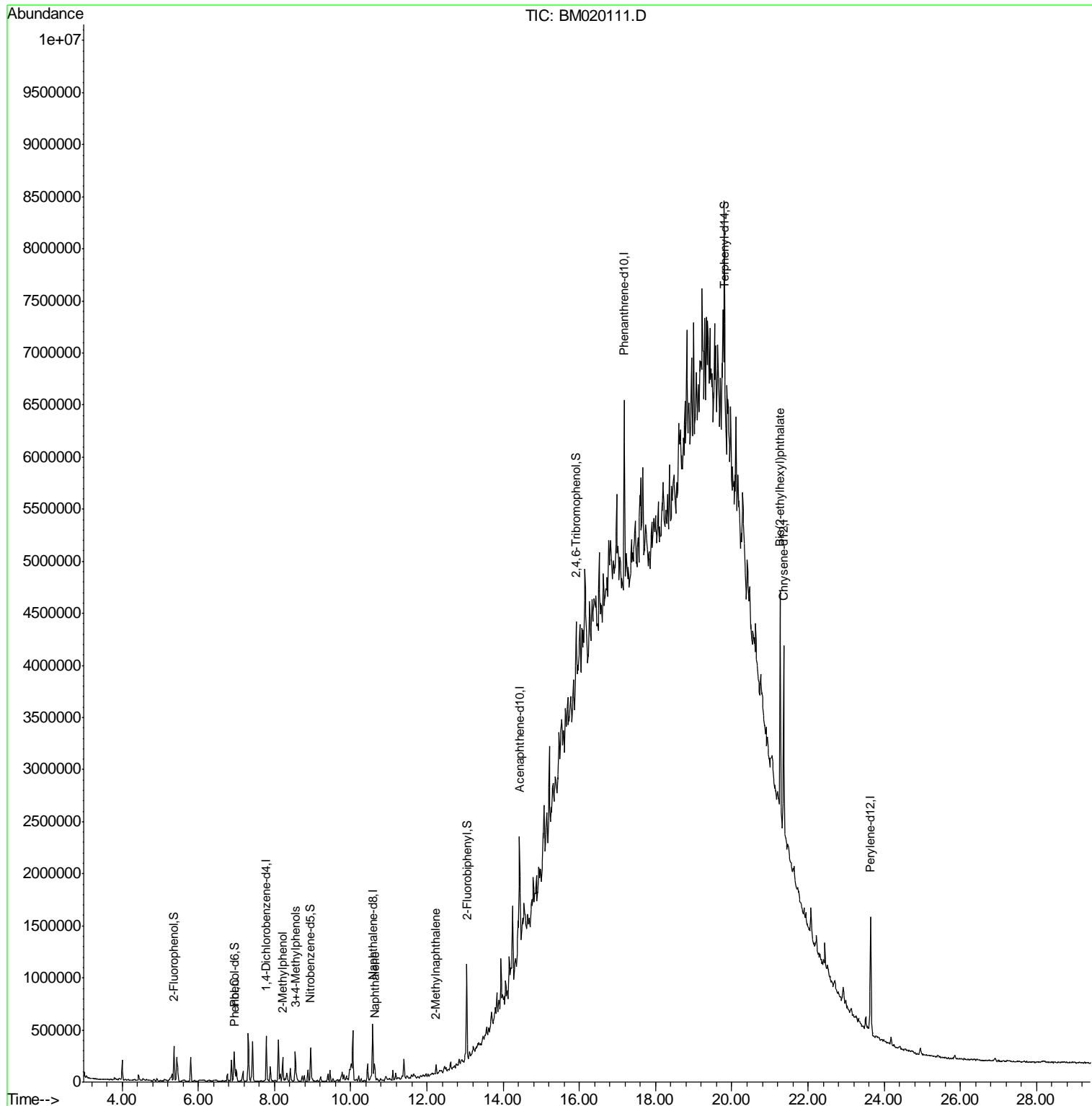
Target Compounds	R.T.	QIon	Response	Conc	Units	Qvalue
10) Phenol	6.97	94	39830	4.576	ng	92
17) 2-Methylphenol	8.22	107	54978	9.813	ng	97
20) 3+4-Methylphenols	8.55	107	95451	12.818	ng	91
31) Naphthalene	10.63	128	99765	4.826	ng	98
37) 2-Methylnaphthalene	12.24	142	36641	2.431	ng	94
84) Bis(2-ethylhexyl)phthalate	21.27	149	674353	24.074	ng	97

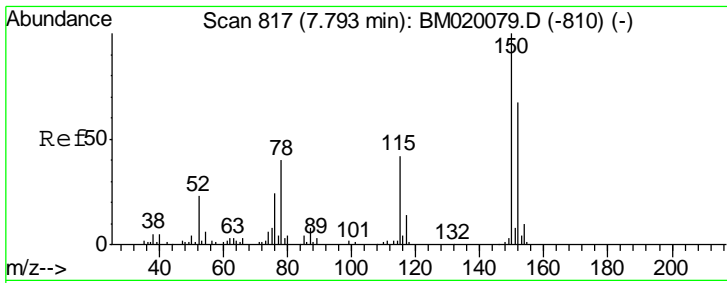
(#) = qualifier out of range (m) = manual integration (+) = signals summed

Data Path : Z:\SVOASRV\HPCHEM1\BNA M\DATA\BM050319\
 Data File : BM020111.D
 Acq On : 03 May 2019 14:40
 Operator : JU/SJ
 Sample : K2617-04DL 5X
 Misc :
 ALS Vial : 5 Sample Multiplier: 1

Instrument :
 BNA_M
 ClientSampleId :
 SUMP-PITDL

Quant Time: May 03 16:06:38 2019
 Quant Method : Z:\SVOASRV\HPCHEM1\BNA M\METHODS\8270-BM043019.M
 Quant Title : ASP BNA STANDARDS FOR 5 POINT CALIBRATION
 QLast Update : Wed May 01 03:58:37 2019
 Response via : Initial Calibration

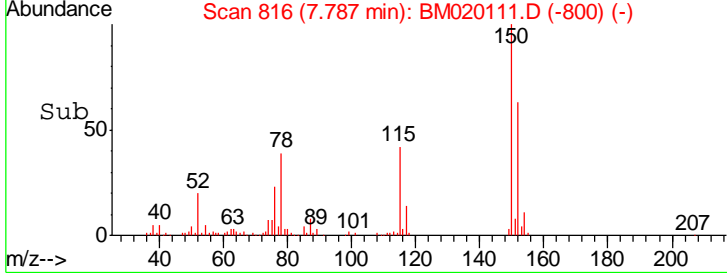
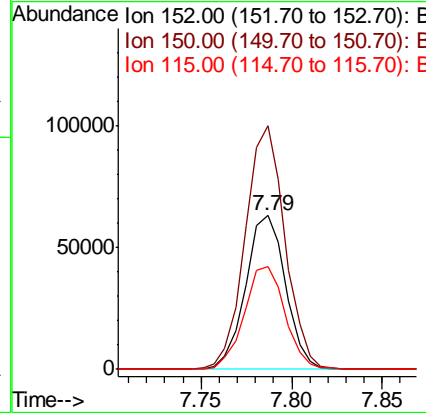
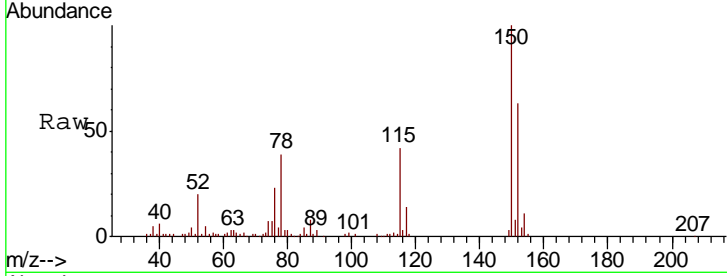




#1
 1,4-Dichlorobenzene-d4
 Concen: 20.000 ng
 RT: 7.79 min Scan# 816
 Delta R.T. -0.01 min
 Lab File: BM020111.D
 Acq: 03 May 2019 14:40

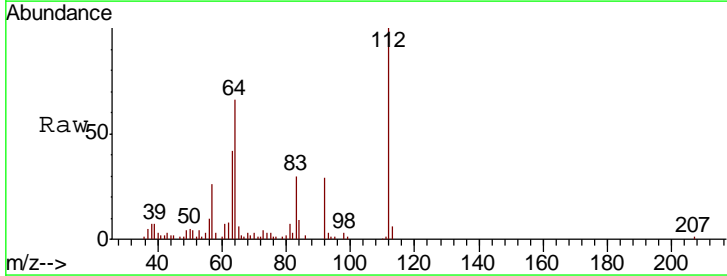
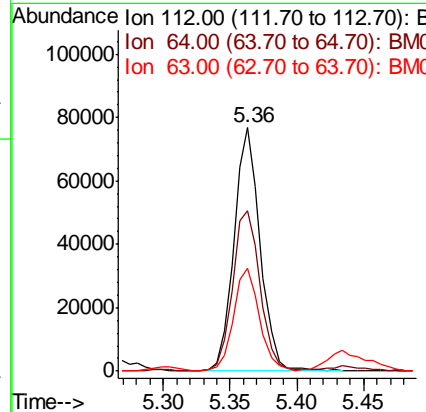
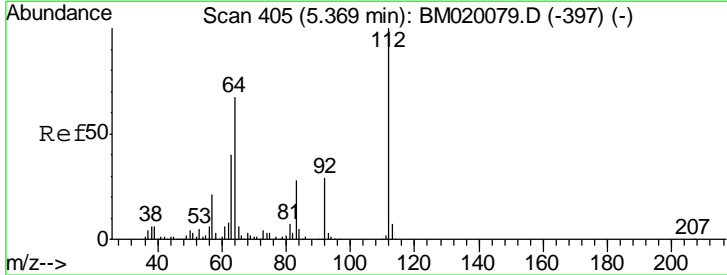
Instrument :
 BNA_M
ClientSampled :
 SUMP-PITDL

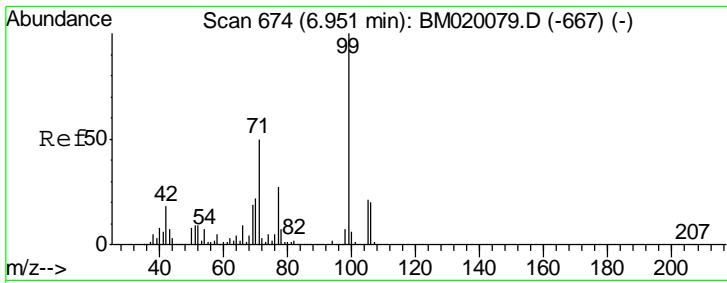
Tgt Ion	Resp	Lower	Upper
152	100		
150	158.5	119.8	179.8
115	66.5	50.8	76.2



#5
 2-Fluorophenol
 Concen: 17.708 ng
 RT: 5.36 min Scan# 404
 Delta R.T. -0.01 min
 Lab File: BM020111.D
 Acq: 03 May 2019 14:40

Tgt Ion	Resp	Lower	Upper
112	100		
64	65.9	53.8	80.6
63	42.0	32.3	48.5

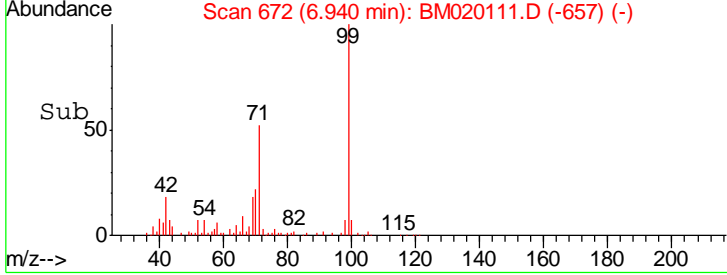
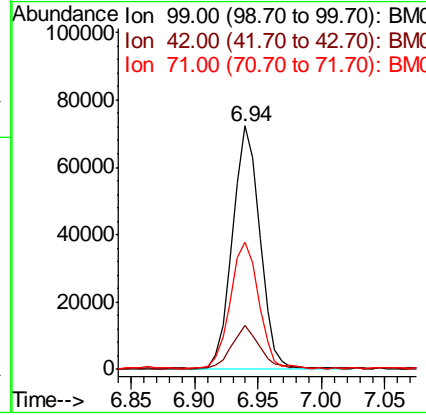
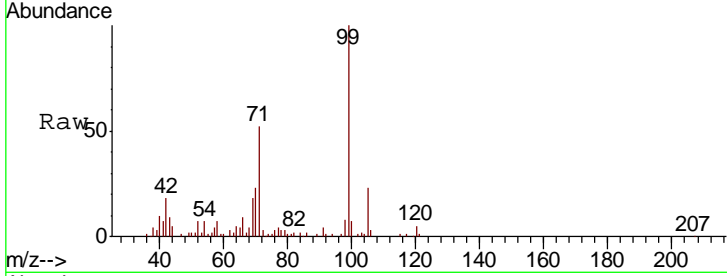




#7
 Phenol-d6
 Concen: 13.393 ng
 RT: 6.94 min Scan# 672
 Delta R.T. -0.01 min
 Lab File: BM020111.D
 Acq: 03 May 2019 14:40

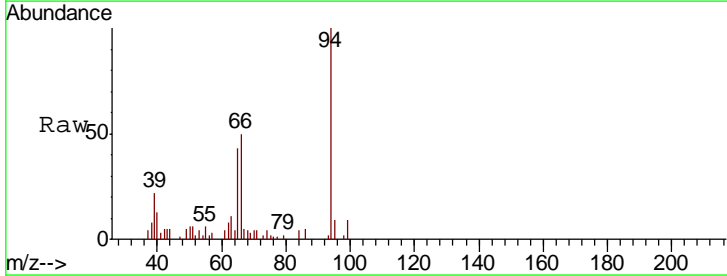
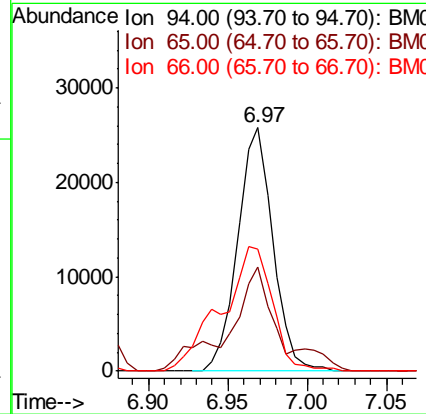
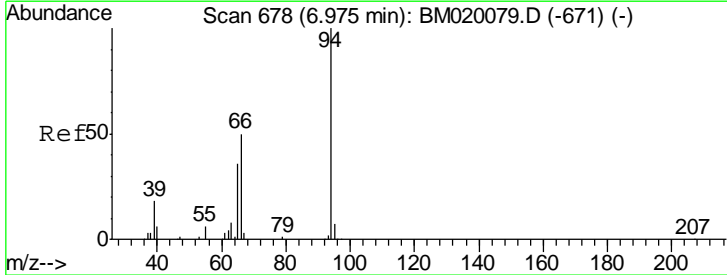
Instrument :
 BNA_M
 ClientSampleID :
 SUMP-PITDL

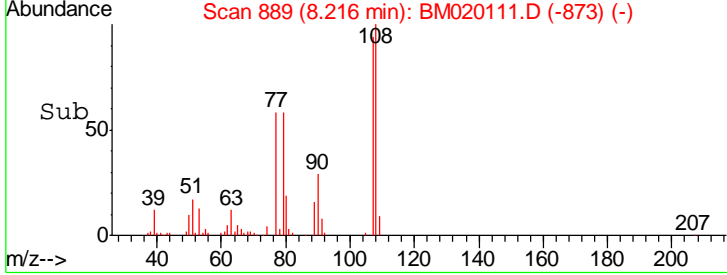
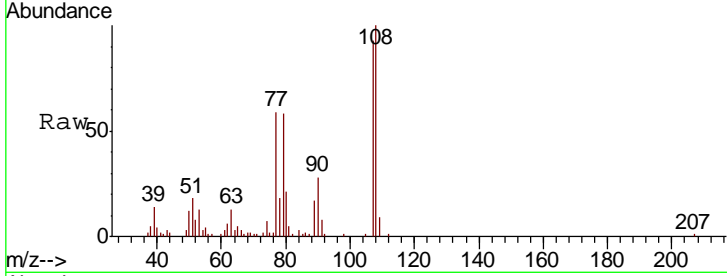
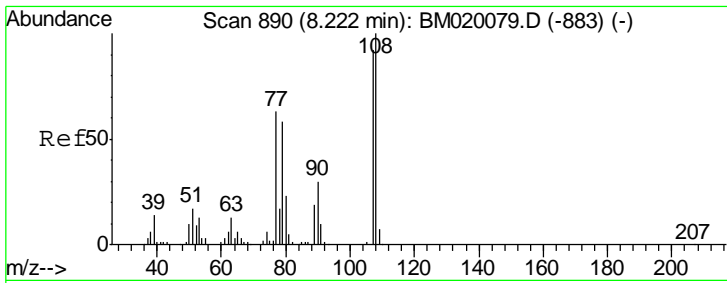
Tgt Ion	Resp	Lower	Upper
99	108278		
42	18.1	14.2	21.2
71	52.4	40.3	60.5



#10
 Phenol
 Concen: 4.576 ng
 RT: 6.97 min Scan# 677
 Delta R.T. -0.01 min
 Lab File: BM020111.D
 Acq: 03 May 2019 14:40

Tgt Ion	Resp	Lower	Upper
94	39830		
65	42.7	17.0	57.0
66	50.0	34.5	74.5

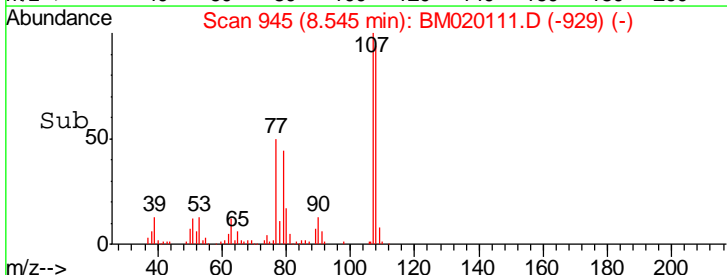
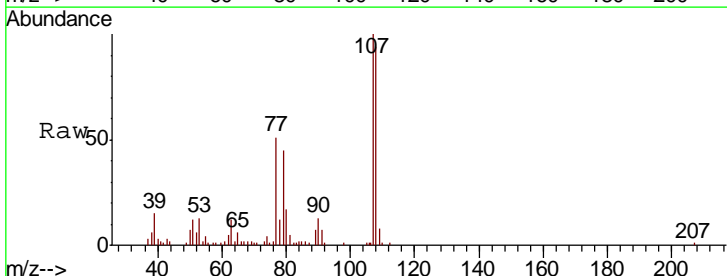
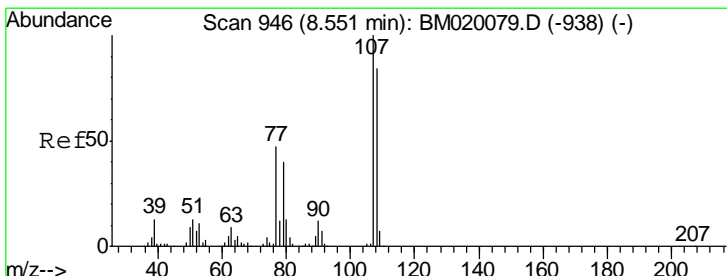
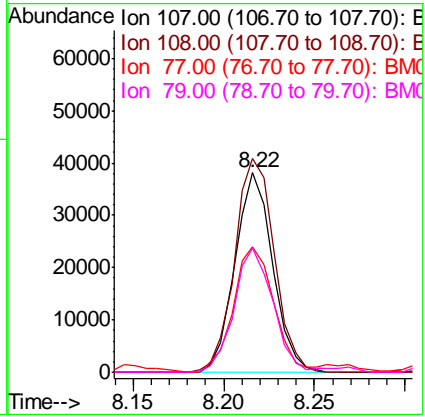




#17
 2-Methylphenol
 Concen: 9.813 ng
 RT: 8.22 min Scan# 889
 Delta R.T. -0.01 min
 Lab File: BM020111.D
 Acq: 03 May 2019 14:40

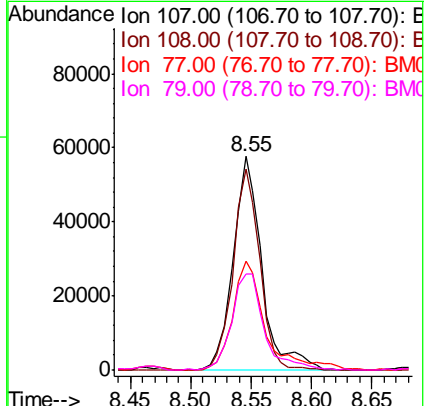
Instrument :
 BNA_M
 ClientSampleID :
 SUMP-PITDL

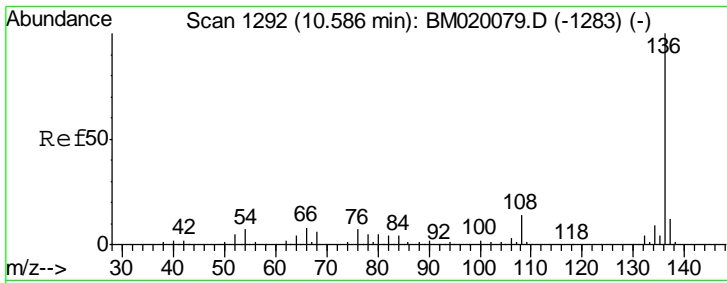
Tgt Ion	Resp	Lower	Upper
107	100		
108	107.3	87.0	130.4
77	63.0	54.7	82.1
79	62.3	50.1	75.1



#20
 3+4-Methylphenols
 Concen: 12.818 ng
 RT: 8.55 min Scan# 945
 Delta R.T. -0.01 min
 Lab File: BM020111.D
 Acq: 03 May 2019 14:40

Tgt Ion	Resp	Lower	Upper
107	100		
108	94.3	64.4	104.4
77	50.9	27.2	67.2
79	45.2	19.6	59.6



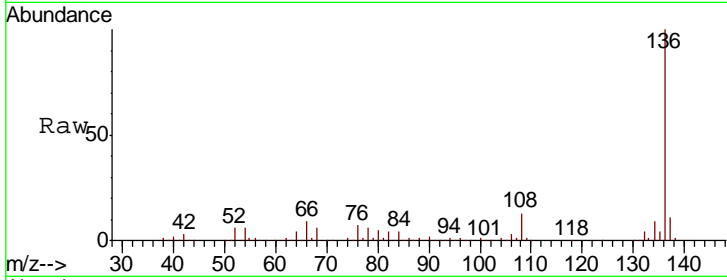


#21
 Naphthalene-d8
 Concen: 20.000 ng
 RT: 10.58 min Scan# 1291
 Delta R.T. -0.01 min
 Lab File: BM020111.D
 Acq: 03 May 2019 14:40

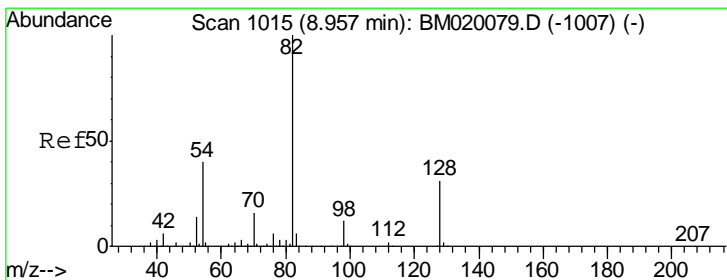
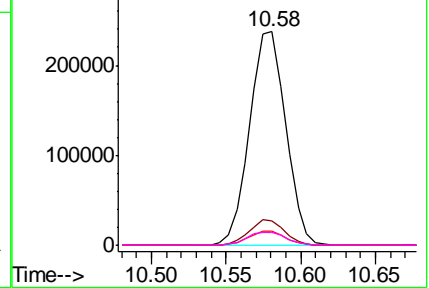
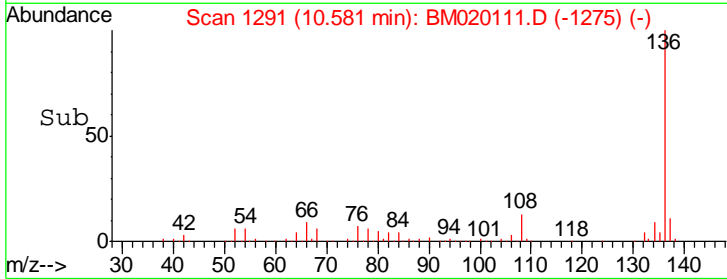
Instrument :
 BNA_M
 ClientSampled :
 SUMP-PITDL

Tgt Ion: 136 Resp: 398329

Ion	Ratio	Lower	Upper
136	100		
137	11.5	9.6	14.4
54	6.4	5.5	8.3
68	6.1	4.6	6.8



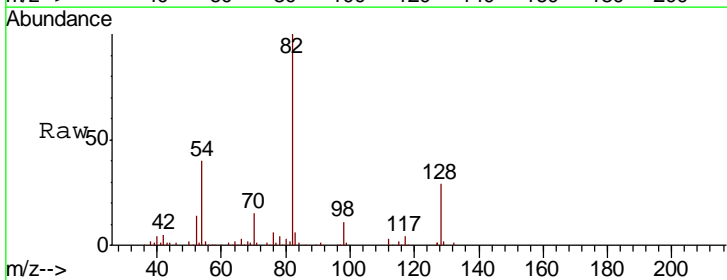
Abundance Ion 136.00 (135.70 to 136.70): E
 Ion 137.00 (136.70 to 137.70): E
 Ion 54.00 (53.70 to 54.70): BM
 Ion 68.00 (67.70 to 68.70): BM



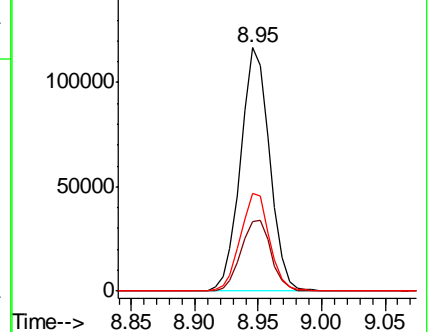
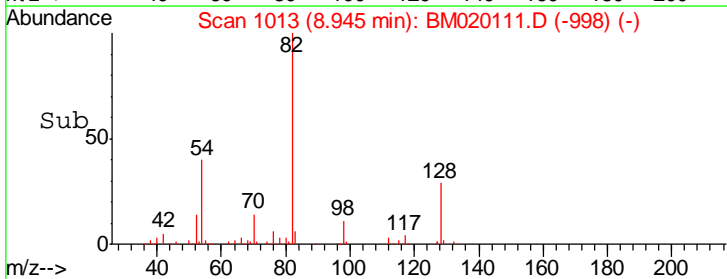
#23
 Nitrobenzene-d5
 Concen: 18.404 ng
 RT: 8.95 min Scan# 1013
 Delta R.T. -0.01 min
 Lab File: BM020111.D
 Acq: 03 May 2019 14:40

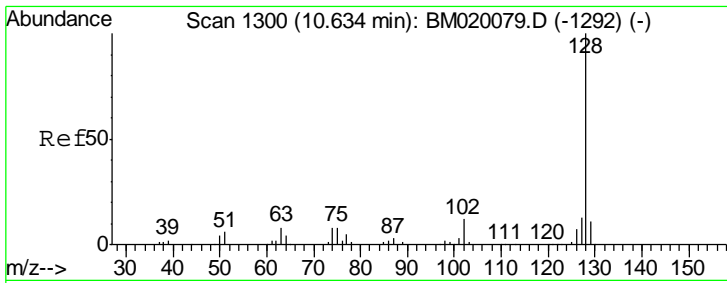
Tgt Ion: 82 Resp: 185682

Ion	Ratio	Lower	Upper
82	100		
128	28.7	25.2	37.8
54	39.9	31.9	47.9



Abundance Ion 82.00 (81.70 to 82.70): BM
 Ion 128.00 (127.70 to 128.70): E
 Ion 54.00 (53.70 to 54.70): BM

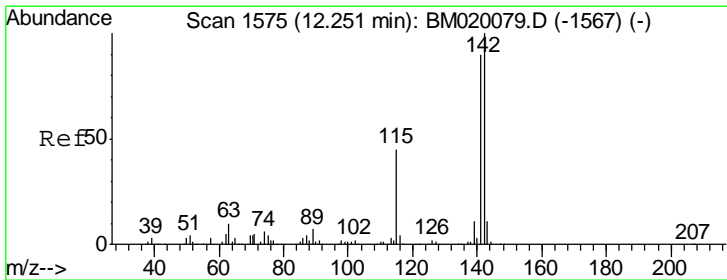
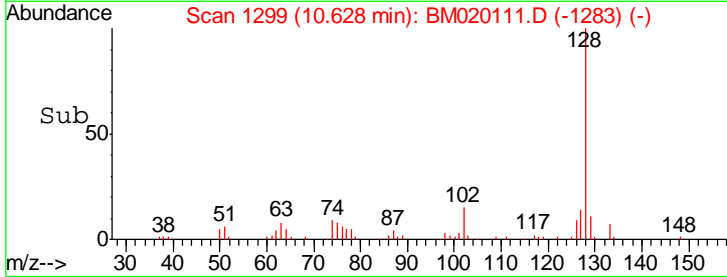
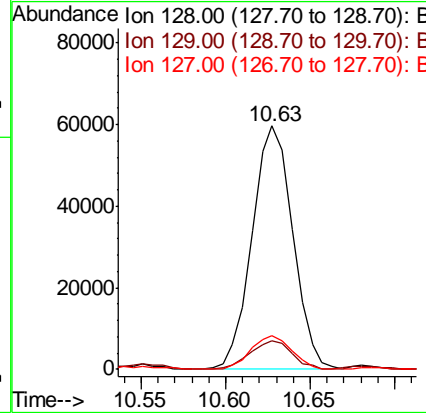
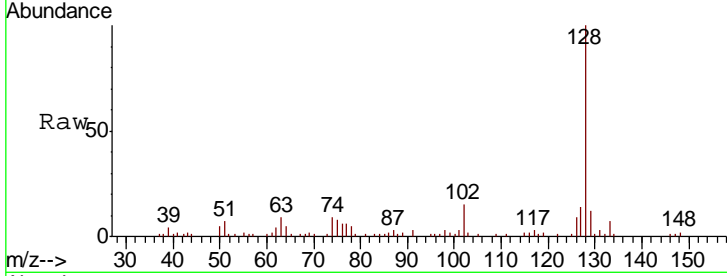




#31
 Naphthalene
 Concen: 4.826 ng
 RT: 10.63 min Scan# 1299
 Delta R.T. -0.01 min
 Lab File: BM020111.D
 Acq: 03 May 2019 14:40

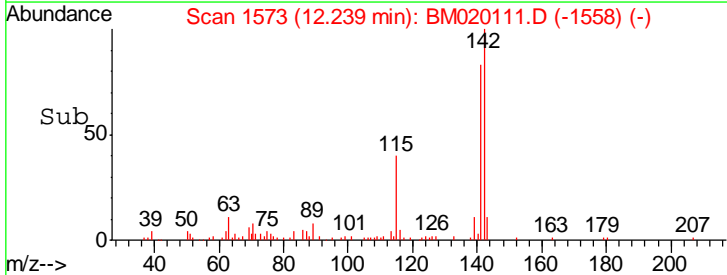
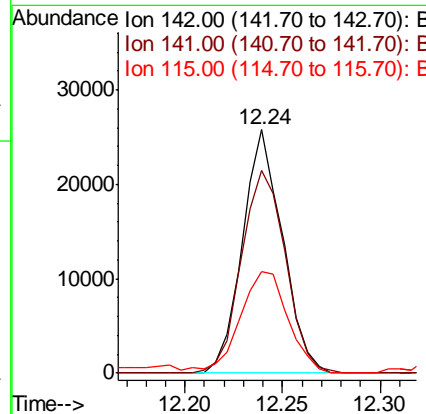
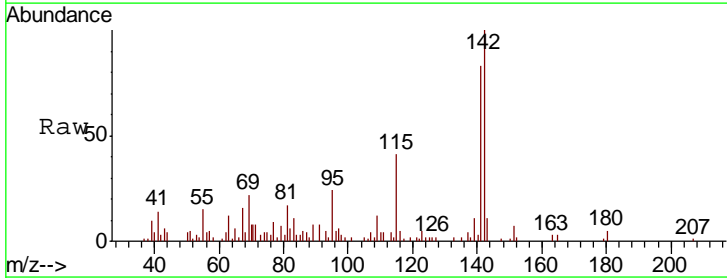
Instrument :
 BNA_M
 ClientSampled :
 SUMP-PITDL

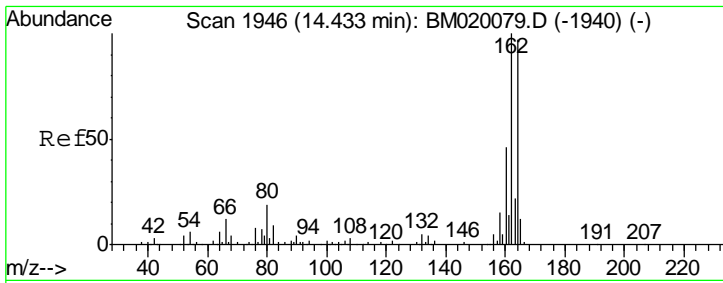
Tgt Ion	Resp	Lower	Upper
128	99765		
129	11.8	9.0	13.4
127	13.9	10.4	15.6



#37
 2-Methylnaphthalene
 Concen: 2.431 ng
 RT: 12.24 min Scan# 1573
 Delta R.T. -0.01 min
 Lab File: BM020111.D
 Acq: 03 May 2019 14:40

Tgt Ion	Resp	Lower	Upper
142	36641		
141	83.2	71.6	107.4
115	41.4	35.8	53.6

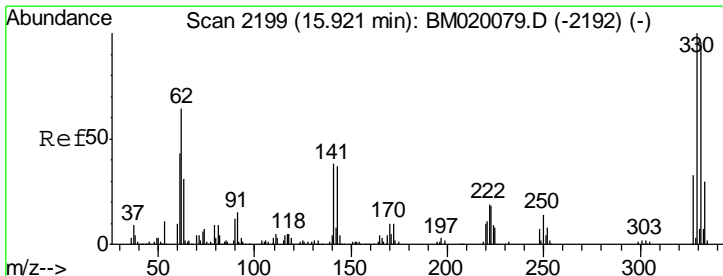
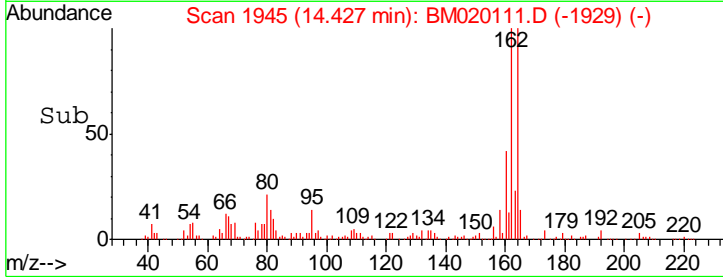
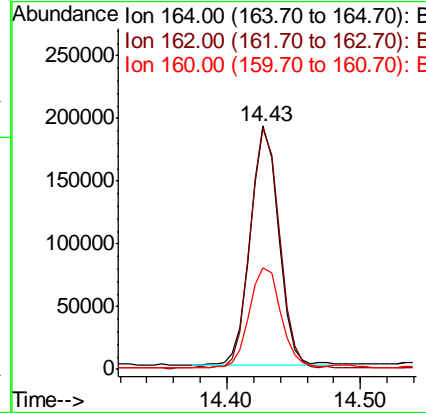
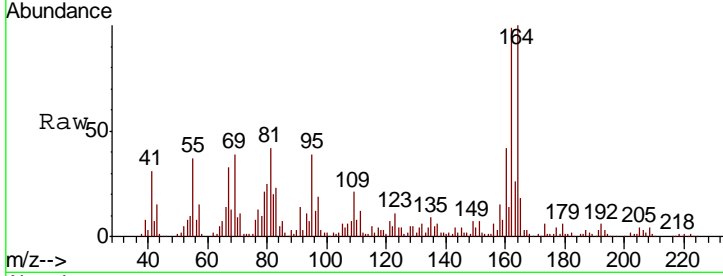




#39
 Acenaphthene-d10
 Concen: 20.000 ng
 RT: 14.43 min Scan# 1945
 Delta R.T. -0.01 min
 Lab File: BM020111.D
 Acq: 03 May 2019 14:40

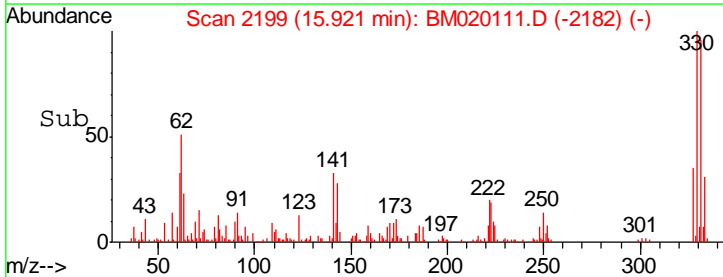
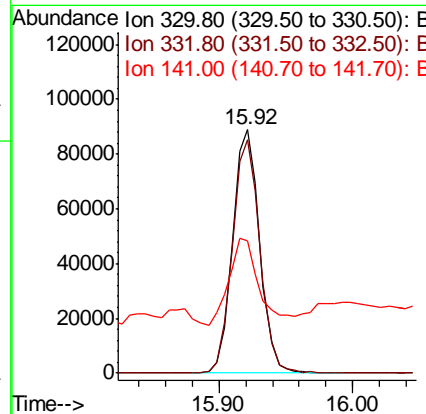
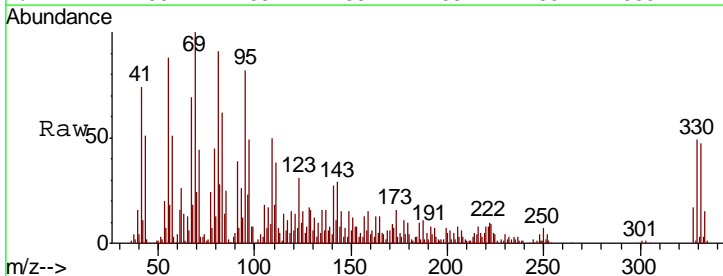
Instrument :
 BNA_M
 ClientSampleID :
 SUMP-PITDL

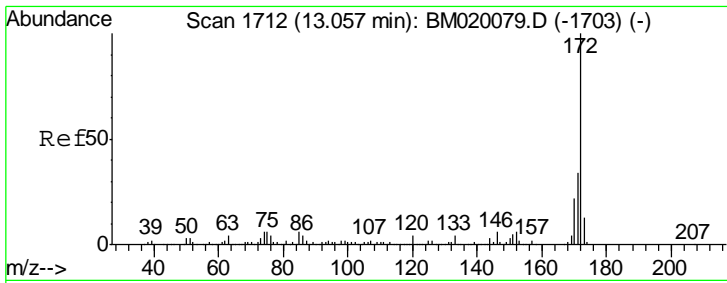
Tgt Ion	Resp	Lower	Upper
164	100		
162	99.1	82.2	123.2
160	41.7	37.6	56.4



#42
 2,4,6-Tribromophenol
 Concen: 29.278 ng
 RT: 15.92 min Scan# 2199
 Delta R.T. -0.00 min
 Lab File: BM020111.D
 Acq: 03 May 2019 14:40

Tgt Ion	Resp	Lower	Upper
330	100		
332	97.2	76.8	115.2
141	40.0	29.2	43.8

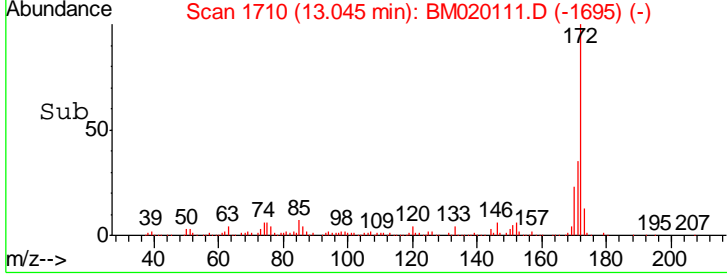
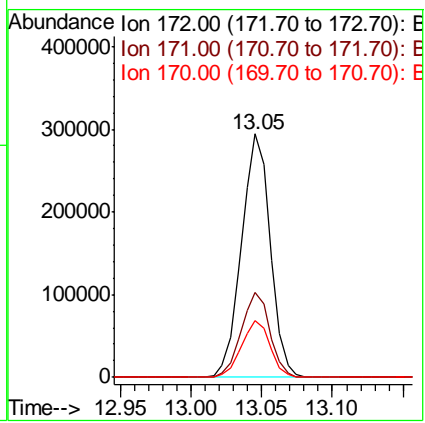
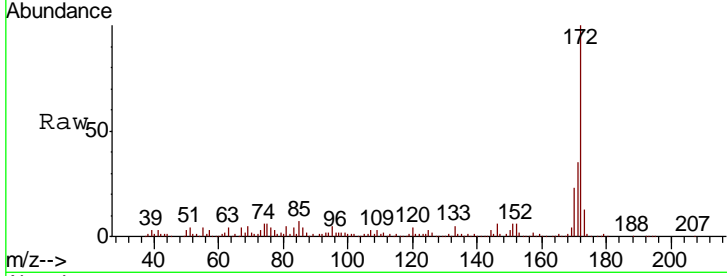




#45
 2-Fluorobiphenyl
 Concen: 18.603 ng
 RT: 13.05 min Scan# 1710
 Delta R.T. -0.01 min
 Lab File: BM020111.D
 Acq: 03 May 2019 14:40

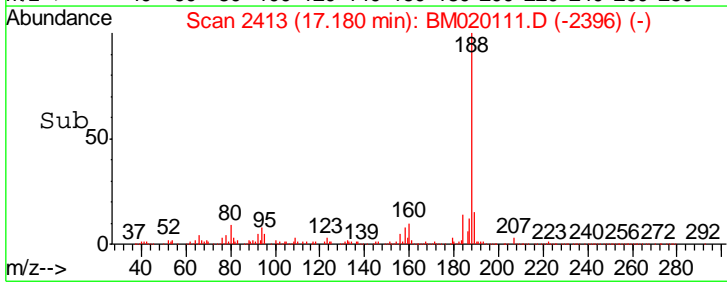
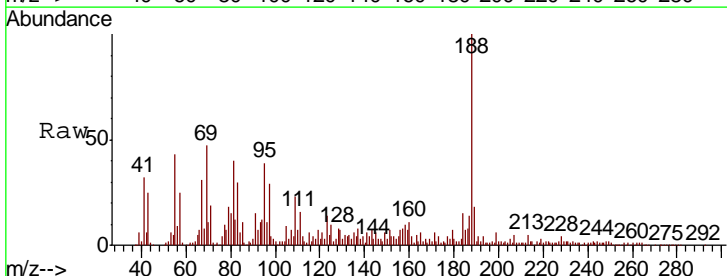
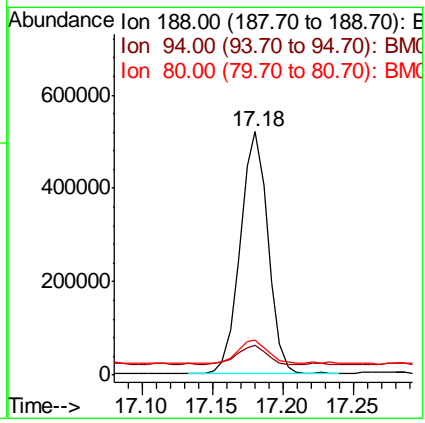
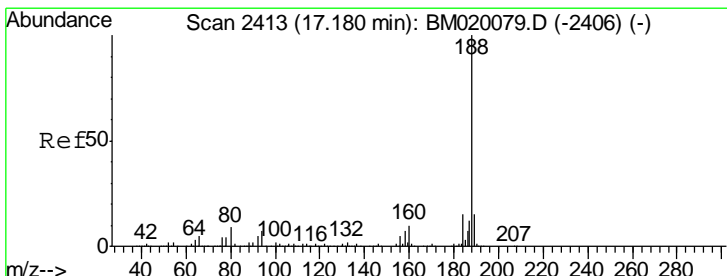
Instrument :
 BNA_M
 ClientSampleId :
 SUMP-PITDL

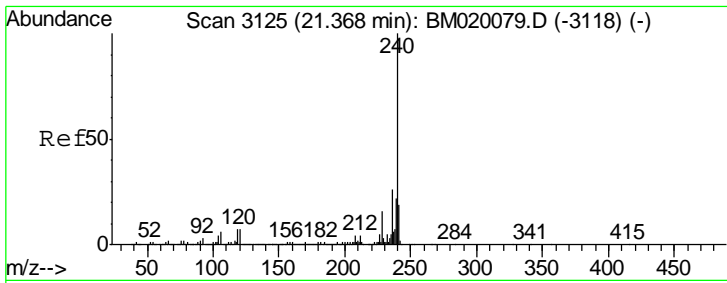
Tgt Ion	Resp	Lower	Upper
172	100		
171	35.0	27.3	40.9
170	23.5	17.9	26.9



#64
 Phenanthrene-d10
 Concen: 20.000 ng
 RT: 17.18 min Scan# 2413
 Delta R.T. -0.00 min
 Lab File: BM020111.D
 Acq: 03 May 2019 14:40

Tgt Ion	Resp	Lower	Upper
188	100		
94	12.2	5.8	8.6#
80	14.5	7.4	11.2#

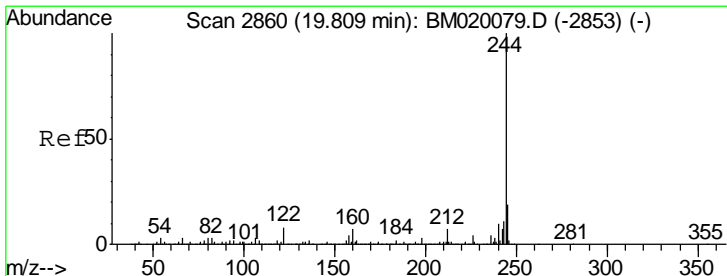
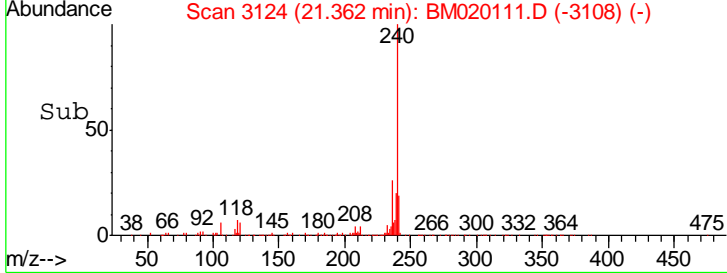
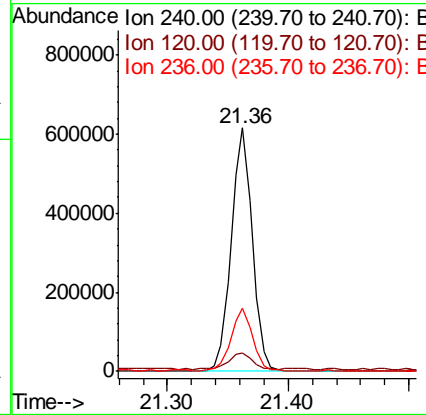
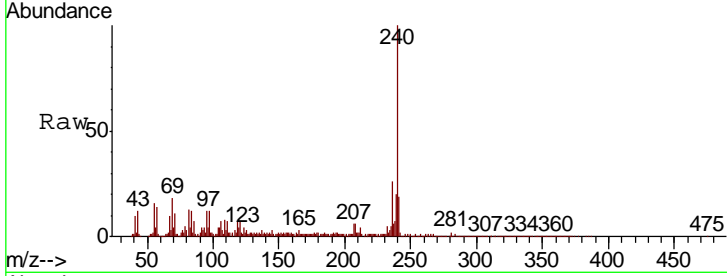




#76
 Chrysene-d12
 Concen: 20.000 ng
 RT: 21.36 min Scan# 3124
 Delta R.T. -0.01 min
 Lab File: BM020111.D
 Acq: 03 May 2019 14:40

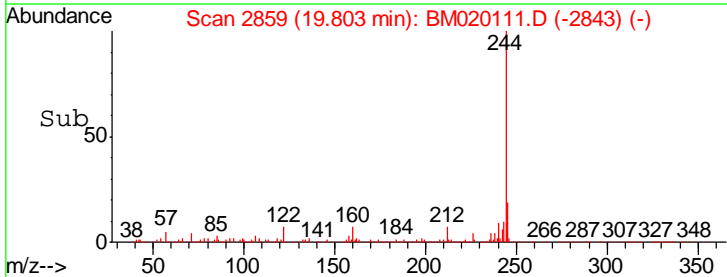
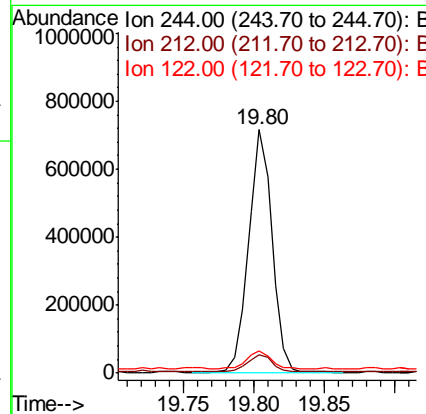
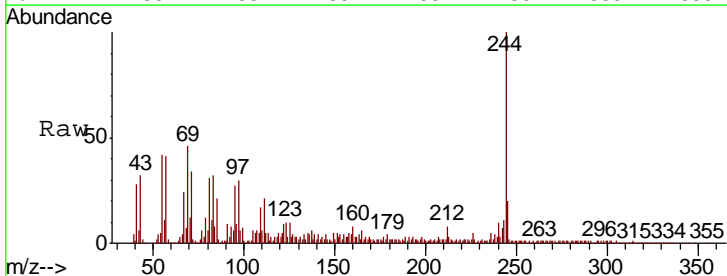
Instrument :
 BNA_M
 ClientSampleId :
 SUMP-PITDL

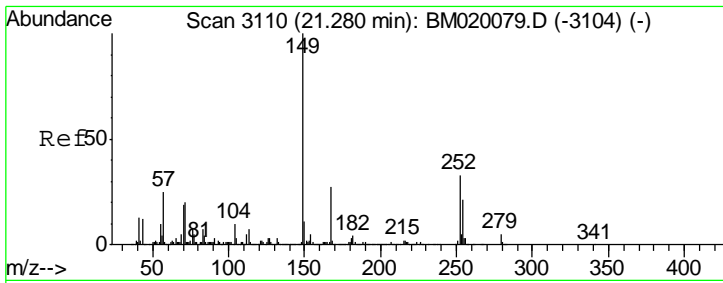
Tgt Ion	Resp	Lower	Upper
240	739377		
120	7.4	5.6	8.4
236	26.0	20.9	31.3



#79
 Terphenyl-d14
 Concen: 19.455 ng
 RT: 19.80 min Scan# 2859
 Delta R.T. -0.01 min
 Lab File: BM020111.D
 Acq: 03 May 2019 14:40

Tgt Ion	Resp	Lower	Upper
244	824714		
212	7.6	5.7	8.5
122	9.1	6.2	9.2

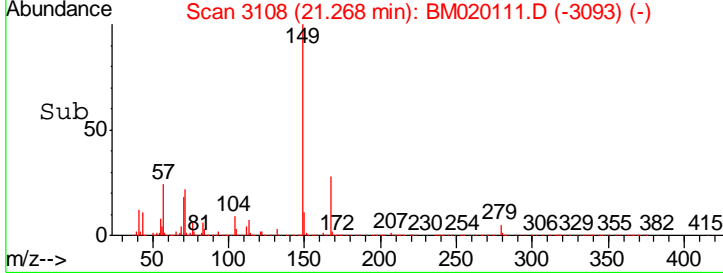
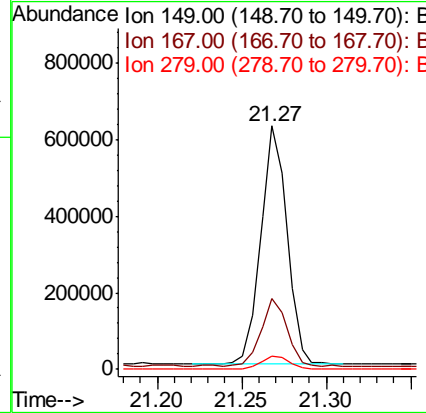
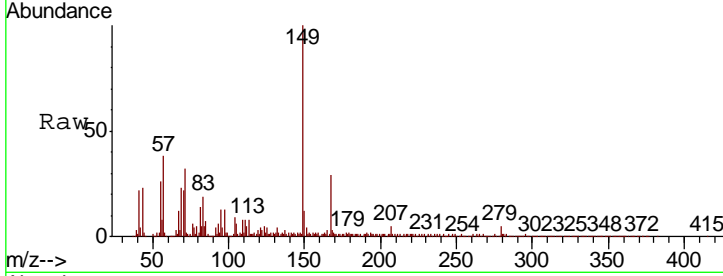




#84
 Bis(2-ethylhexyl)phthalate
 Concen: 24.074 ng
 RT: 21.27 min Scan# 3108
 Delta R.T. -0.01 min
 Lab File: BM020111.D
 Acq: 03 May 2019 14:40

Instrument :
 BNA_M
 ClientSampleId :
 SUMP-PITDL

Tgt Ion	Resp	Lower	Upper
149	674353		
167	28.9	21.8	32.8
279	5.5	4.2	6.2



#87
 Perylene-d12
 Concen: 20.000 ng
 RT: 23.64 min Scan# 3512
 Delta R.T. -0.01 min
 Lab File: BM020111.D
 Acq: 03 May 2019 14:40

Tgt Ion	Resp	Lower	Upper
264	833634		
260	23.1	19.2	28.8
265	21.5	16.9	25.3

