

Data Path : Z:\SVOASRV\HPCHEM1\BNA M\DATA\BM052219\
 Data File : BM020502.D
 Acq On : 22 May 2019 21:35
 Operator : JU/SJ
 Sample : K2927-01
 Misc :
 ALS Vial : 8 Sample Multiplier: 1

Instrument :
 BNA_M
 ClientSampleId :
 A4292

Integration Parameters: LSCINT.P

Integrator: RTE
 Smoothing : OFF
 Sampling : 1
 Start Thrs: 0.2
 Stop Thrs : 0

Filtering: 5
 Min Area: 0.1 % of largest Peak
 Max Peaks: 100
 Peak Location: TOP

If leading or trailing edge < 100 prefer < Baseline drop else tangent >
 Peak separation: 5

Method : Z:\SVOASRV\HPCHEM1\BNA_M\METHODS\SOM-EPA-BM051619MA.M
 Title : SVOA CALIBRATION

Signal : TIC

peak #	R.T. min	first scan	max scan	last scan	PK TY	peak height	corr. area	corr. % max.	% of total
1	6.851	652	657	670	rVB	225238	386555	20.61%	1.671%
2	7.022	681	686	695	rVB	174079	281942	15.04%	1.219%
3	7.210	712	718	727	rVB	255490	399990	21.33%	1.729%
4	7.675	792	797	807	rVB	277247	460498	24.56%	1.991%
5	8.393	913	919	930	rVB	232720	414356	22.10%	1.791%
6	8.845	990	996	1005	rBV	209498	367206	19.58%	1.587%
7	9.563	1112	1118	1127	rBV	193541	322065	17.18%	1.392%
8	10.098	1203	1209	1222	rBV	299624	509296	27.16%	2.202%
9	10.469	1265	1272	1279	rBV	380488	618381	32.98%	2.673%
10	10.622	1292	1298	1321	rVB	130418	268359	14.31%	1.160%
11	12.063	1538	1543	1548	rVB3	3241	5655	0.30%	0.024%
12	12.139	1552	1556	1560	rVB2	3136	4357	0.23%	0.019%
13	12.363	1591	1594	1598	rBV2	2466	3600	0.19%	0.016%
14	13.651	1809	1813	1819	rVB3	1666	2897	0.15%	0.013%
15	13.751	1824	1830	1834	rBV	545402	730684	38.97%	3.159%
16	13.798	1834	1838	1844	rVB	138406	186143	9.93%	0.805%
17	14.027	1871	1877	1892	rBV	598608	886255	47.26%	3.831%
18	14.210	1901	1908	1917	rBV3	12183	26510	1.41%	0.115%
19	14.339	1923	1930	1937	rBV2	565302	856155	45.66%	3.701%
20	14.398	1937	1940	1946	rVB	10087	13885	0.74%	0.060%
21	14.569	1963	1969	1980	rBV	141006	246036	13.12%	1.064%
22	14.733	1991	1997	2002	rBV5	9299	16454	0.88%	0.071%
23	14.951	2032	2034	2038	rVB2	2732	2838	0.15%	0.012%
24	15.122	2057	2063	2068	rBV3	3270	6119	0.33%	0.026%
25	15.169	2068	2071	2075	rVV2	4972	6032	0.32%	0.026%
26	15.210	2075	2078	2083	rVB3	2267	3553	0.19%	0.015%
27	15.333	2093	2099	2105	rBV	769538	1075589	57.36%	4.650%
28	15.392	2105	2109	2119	rVB3	14606	26010	1.39%	0.112%
29	15.480	2119	2124	2134	rBV	155298	215162	11.47%	0.930%
30	15.574	2134	2140	2143	rBV4	7109	12271	0.65%	0.053%
31	15.686	2155	2159	2164	rBV3	5047	7631	0.41%	0.033%
32	15.721	2164	2165	2170	rVB3	1893	2795	0.15%	0.012%
33	15.833	2174	2184	2188	rBV5	5433	11856	0.63%	0.051%
34	16.033	2215	2218	2220	rBV2	4507	5374	0.29%	0.023%

Data Path : Z:\SVOASRV\HPCHEM1\BNA M\DATA\BM052219\
 Data File : BM020502.D
 Acq On : 22 May 2019 21:35
 Operator : JU/SJ
 Sample : K2927-01
 Misc :
 ALS Vial : 8 Sample Multiplier: 1

Instrument :
 BNA_M
 ClientSampleId :
 A4292

Integration Parameters: LSCINT.P

Integrator: RTE
 Smoothing : OFF
 Sampling : 1
 Start Thrs: 0.2
 Stop Thrs : 0

Filtering: 5
 Min Area: 0.1 % of largest Peak
 Max Peaks: 100
 Peak Location: TOP

If leading or trailing edge < 100 prefer < Baseline drop else tangent >
 Peak separation: 5

Method : Z:\SVOASRV\HPCHEM1\BNA_M\METHODS\SOM-EPA-BM051619MA.M
 Title : SVOA CALIBRATION

35	16.121	2229	2233	2235	rVB3	2839	3055	0.16%	0.013%
36	16.398	2274	2280	2283	rBV4	7377	12300	0.66%	0.053%
37	16.451	2285	2289	2291	rVB2	2857	3000	0.16%	0.013%
38	16.621	2315	2318	2320	rBV2	5008	6361	0.34%	0.027%
39	16.663	2322	2325	2328	rVB2	4387	4973	0.27%	0.021%
40	16.692	2328	2330	2335	rVB4	2352	2674	0.14%	0.012%
41	16.751	2335	2340	2346	rBV3	15117	23689	1.26%	0.102%
42	16.827	2348	2353	2357	rBV3	6464	12227	0.65%	0.053%
43	16.880	2357	2362	2363	rBV4	2774	4029	0.21%	0.017%
44	16.910	2363	2367	2373	rVB	10539	14360	0.77%	0.062%
45	16.974	2373	2378	2381	rBV3	6058	7664	0.41%	0.033%
46	17.033	2384	2388	2389	rBV3	2424	3202	0.17%	0.014%
47	17.092	2392	2398	2402	rBV	788694	1102531	58.80%	4.766%
48	17.133	2402	2405	2410	rVB	232154	284989	15.20%	1.232%
49	17.192	2410	2415	2420	rBV	789655	1144141	61.02%	4.946%
50	17.292	2430	2432	2435	rVB4	5161	6209	0.33%	0.027%
51	17.357	2439	2443	2444	rBV3	1913	2618	0.14%	0.011%
52	17.457	2458	2460	2463	rVV3	4004	5770	0.31%	0.025%
53	17.504	2465	2468	2474	rVV3	16510	28195	1.50%	0.122%
54	17.568	2477	2479	2482	rVB2	6167	5305	0.28%	0.023%
55	17.610	2482	2486	2488	rBV3	7716	8372	0.45%	0.036%
56	17.674	2493	2497	2504	rBV5	7880	16312	0.87%	0.071%
57	17.804	2517	2519	2524	rBV3	2678	3684	0.20%	0.016%
58	17.857	2524	2528	2531	rBV4	2822	4030	0.21%	0.017%
59	17.898	2532	2535	2536	rBV2	5180	4524	0.24%	0.020%
60	17.910	2536	2537	2541	rVB3	6180	6018	0.32%	0.026%
61	17.968	2542	2547	2551	rBV2	83522	129993	6.93%	0.562%
62	18.015	2551	2555	2560	rVB	52639	75636	4.03%	0.327%
63	18.098	2565	2569	2574	rVB	15949	24566	1.31%	0.106%
64	18.157	2574	2579	2584	rBV2	61213	117071	6.24%	0.506%
65	18.198	2584	2586	2592	rVB	30240	36820	1.96%	0.159%
66	18.268	2594	2598	2602	rBV6	7818	13122	0.70%	0.057%
67	18.321	2604	2607	2610	rBV4	4823	6326	0.34%	0.027%
68	18.351	2610	2612	2613	rVV2	3486	2831	0.15%	0.012%
69	18.415	2621	2623	2624	rBV2	3654	2739	0.15%	0.012%
70	18.468	2626	2632	2636	rBV	32071	49963	2.66%	0.216%
71	18.521	2636	2641	2647	rVV2	39724	58927	3.14%	0.255%

Data Path : Z:\SVOASRV\HPCHEM1\BNA M\DATA\BM052219\
 Data File : BM020502.D
 Acq On : 22 May 2019 21:35
 Operator : JU/SJ
 Sample : K2927-01
 Misc :
 ALS Vial : 8 Sample Multiplier: 1

Instrument :
 BNA_M
 ClientSampleId :
 A4292

Integration Parameters: LSCINT.P

Integrator: RTE
 Smoothing : OFF
 Sampling : 1
 Start Thrs: 0.2
 Stop Thrs : 0

Filtering: 5
 Min Area: 0.1 % of largest Peak
 Max Peaks: 100
 Peak Location: TOP

If leading or trailing edge < 100 prefer < Baseline drop else tangent >
 Peak separation: 5

Method : Z:\SVOASRV\HPCHEM1\BNA_M\METHODS\SOM-EPA-BM051619MA.M
 Title : SVOA CALIBRATION

72	18.627	2657	2659	2660	rBV2	5794	3935	0.21%	0.017%
73	18.662	2663	2665	2668	rBV4	3936	3188	0.17%	0.014%
74	18.692	2668	2670	2671	rBV	4196	4138	0.22%	0.018%
75	18.715	2671	2674	2678	rBV4	11894	14129	0.75%	0.061%
76	18.762	2680	2682	2686	rVB3	14380	16169	0.86%	0.070%
77	18.810	2686	2690	2693	rBV4	14417	21367	1.14%	0.092%
78	18.845	2693	2696	2697	rBV3	6936	7506	0.40%	0.032%
79	18.892	2699	2704	2708	rBV2	49356	92056	4.91%	0.398%
80	19.039	2724	2729	2735	rBV3	46372	83973	4.48%	0.363%
81	19.157	2742	2749	2754	rBV	670497	866674	46.22%	3.746%
82	19.257	2762	2766	2771	rBV6	27180	49702	2.65%	0.215%
83	19.309	2771	2775	2778	rBV	34843	53903	2.87%	0.233%
84	19.492	2801	2806	2809	rBV	1106097	1629456	86.90%	7.044%
85	19.521	2809	2811	2820	rVV	600114	815125	43.47%	3.524%
86	19.592	2820	2823	2831	rVB3	71691	121675	6.49%	0.526%
87	19.704	2839	2842	2848	rVB	29818	43094	2.30%	0.186%
88	19.845	2861	2866	2873	rBV3	53635	135696	7.24%	0.587%
89	20.015	2884	2895	2899	rBV2	117084	315411	16.82%	1.363%
90	20.115	2910	2912	2915	rBV	35795	37222	1.99%	0.161%
91	20.174	2919	2922	2926	rVV3	74954	122394	6.53%	0.529%
92	20.768	3020	3023	3028	rBV	77520	106870	5.70%	0.462%
93	20.933	3048	3051	3054	rBV2	60299	87377	4.66%	0.378%
94	20.980	3055	3059	3062	rBV2	163324	228076	12.16%	0.986%
95	21.286	3105	3111	3115	rBV2	1125782	1875139	100.00%	8.106%
96	21.321	3115	3117	3127	rVB	344156	440347	23.48%	1.904%
97	22.321	3283	3287	3300	rVB2	495752	867493	46.26%	3.750%
98	22.862	3375	3379	3393	rVB	473843	1224094	65.28%	5.292%
99	23.397	3465	3470	3474	rBV2	618782	1014720	54.11%	4.386%
100	23.539	3489	3494	3500	rBV	708631	1231484	65.67%	5.323%

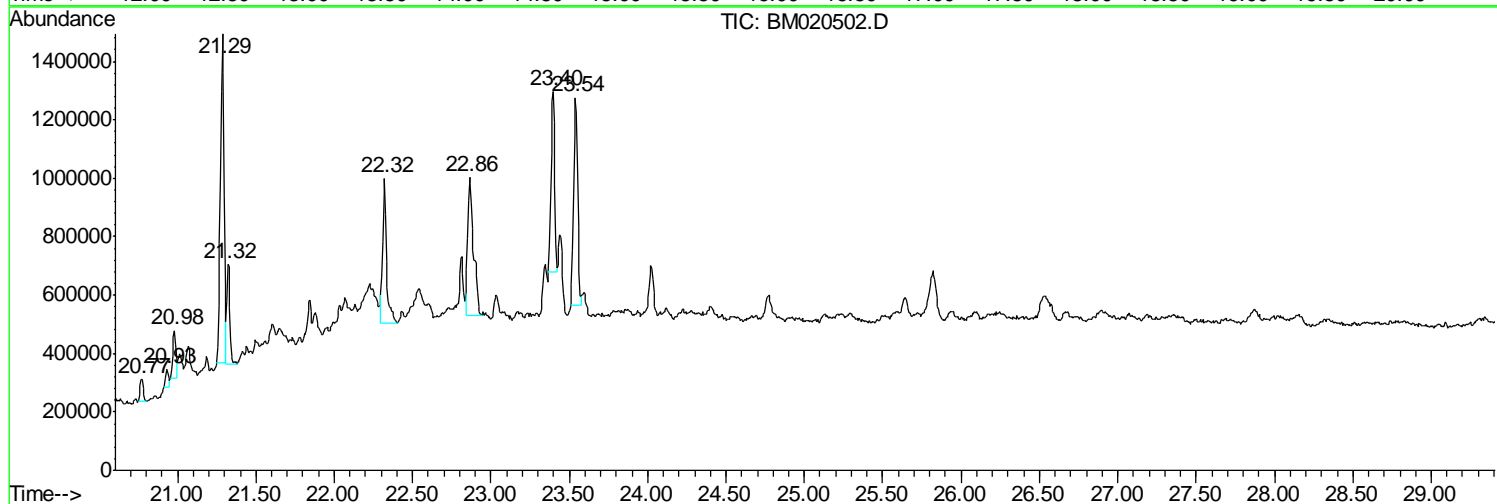
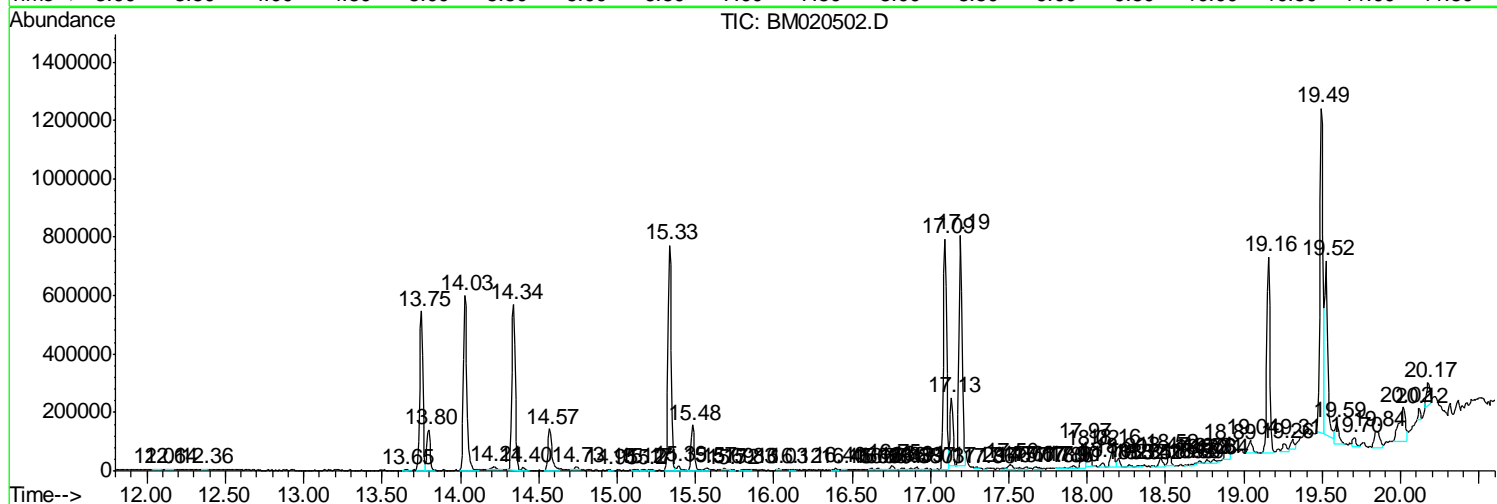
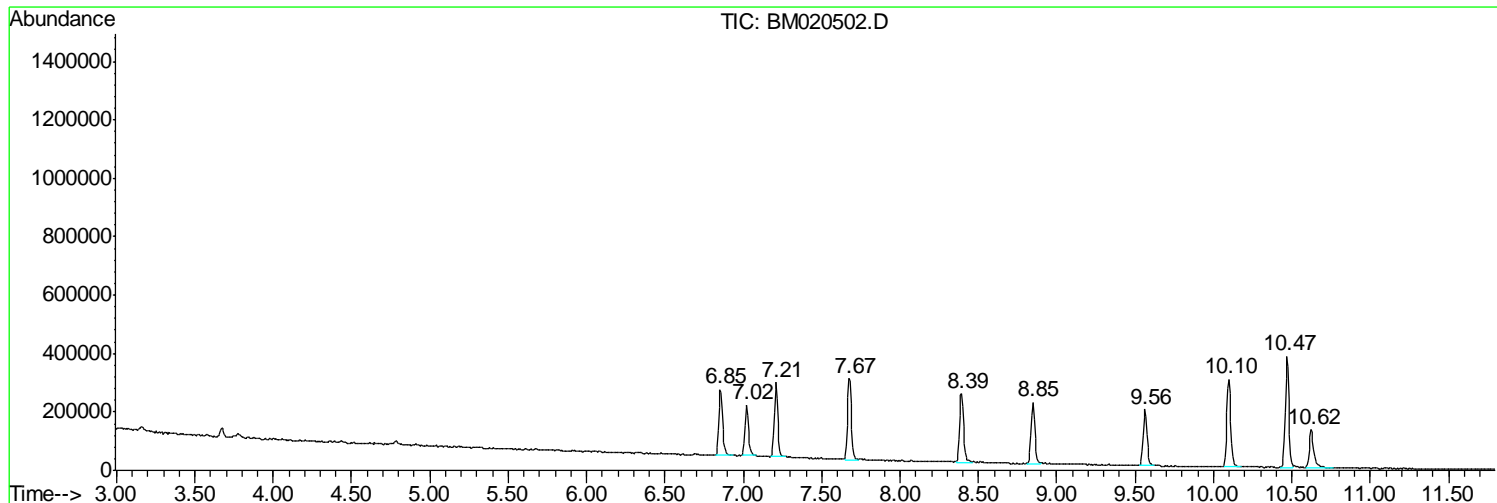
Sum of corrected areas: 23133148

Data Path : Z:\SVOASRV\HPCHEM1\BNA M\DATA\BM052219\
 Data File : BM020502.D
 Acq On : 22 May 2019 21:35
 Operator : JU/SJ
 Sample : K2927-01
 Misc :
 ALS Vial : 8 Sample Multiplier: 1

Instrument :
 BNA_M
 ClientSampled :
 A4292

Quant Method : Z:\SVOASRV\HPCHEM1\BNA_M\METHODS\SOM-EPA-BM051619MA.M
 Quant Title : SVOA CALIBRATION

TIC Library : C:\DATABASE\NIST02.L
 TIC Integration Parameters: LSCINT.P



Data Path : Z:\SVOASRV\HPCHEM1\BNA M\DATA\BM052219\
 Data File : BM020502.D
 Acq On : 22 May 2019 21:35
 Operator : JU/SJ
 Sample : K2927-01
 Misc :
 ALS Vial : 8 Sample Multiplier: 1

Instrument :
 BNA_M
 ClientSampleID :
 A4292

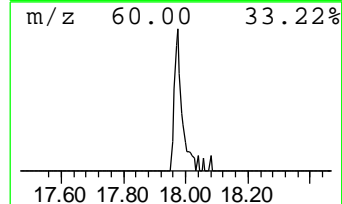
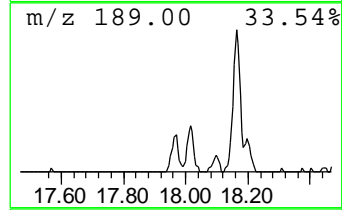
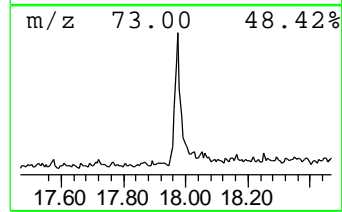
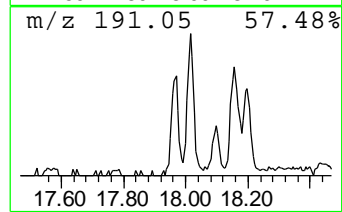
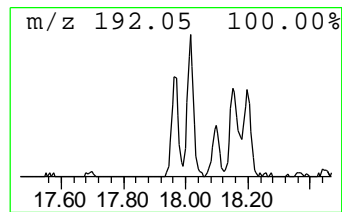
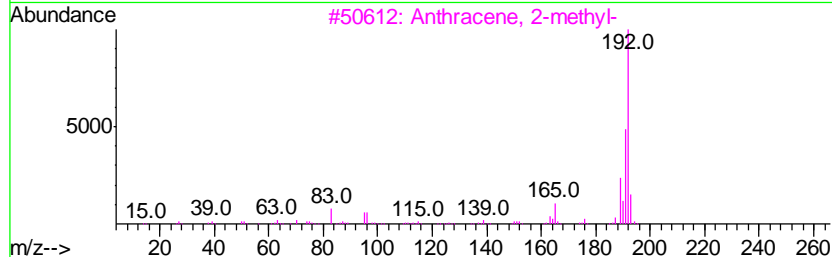
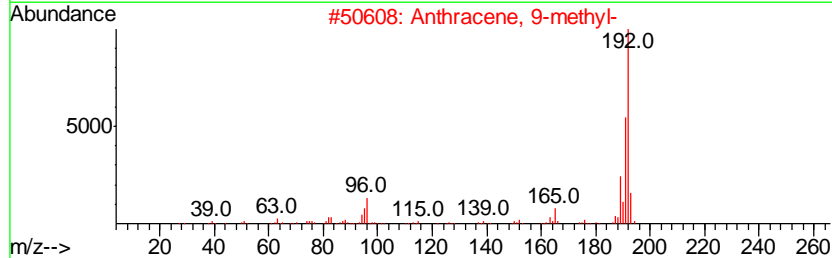
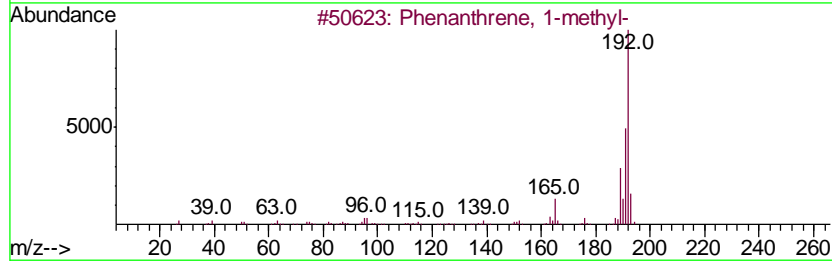
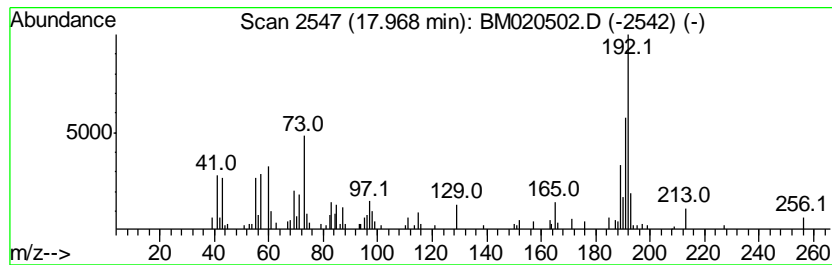
Quant Method : Z:\SVOASRV\HPCHEM1\BNA_M\METHODS\SOM-EPA-BM051619MA.M
 Quant Title : SVOA CALIBRATION

TIC Library : C:\DATABASE\NIST02.L
 TIC Integration Parameters: LSCINT.P

 Peak Number 1 Phenanthrene, 1-methyl- Concentration Rank 4

R.T.	EstConc	Area	Relative to ISTD	R.T.
17.97	2.36 ng/ul	129993	Phenanthrene-d10	17.09

Hit#	of	Tentative ID	MW	MolForm	CAS#	Qual
1	5	Phenanthrene, 1-methyl-	192	C15H12	000832-69-9	95
2		Anthracene, 9-methyl-	192	C15H12	000779-02-2	93
3		Anthracene, 2-methyl-	192	C15H12	000613-12-7	92
4		1H-Cyclopropa[1]phenanthrene, 1a, ...	192	C15H12	000949-41-7	92
5		Anthracene, 1-methyl-	192	C15H12	000610-48-0	92



Data Path : Z:\SVOASRV\HPCHEM1\BNA M\DATA\BM052219\
 Data File : BM020502.D
 Acq On : 22 May 2019 21:35
 Operator : JU/SJ
 Sample : K2927-01
 Misc :
 ALS Vial : 8 Sample Multiplier: 1

Instrument :
 BNA_M
 ClientSampled :
 A4292

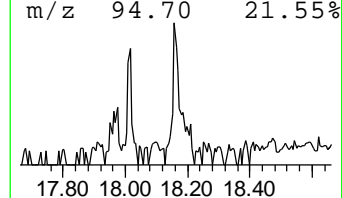
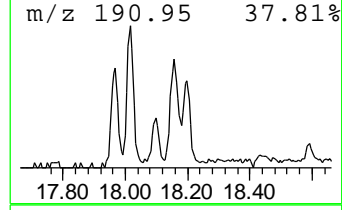
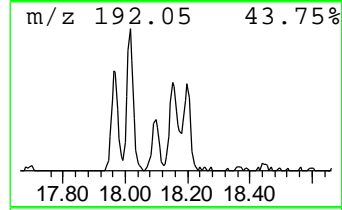
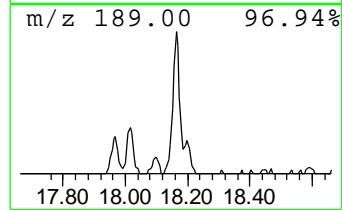
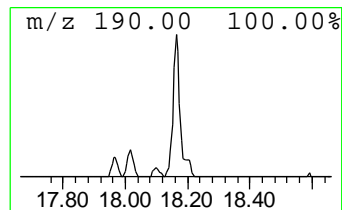
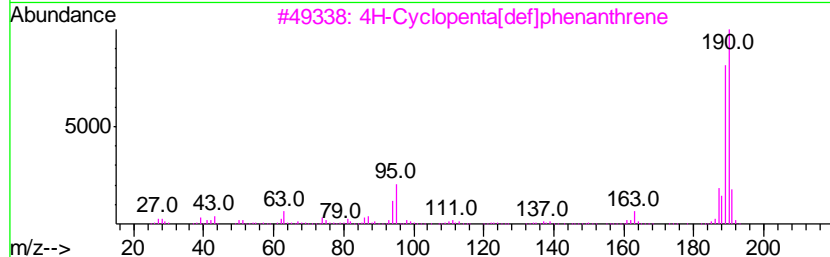
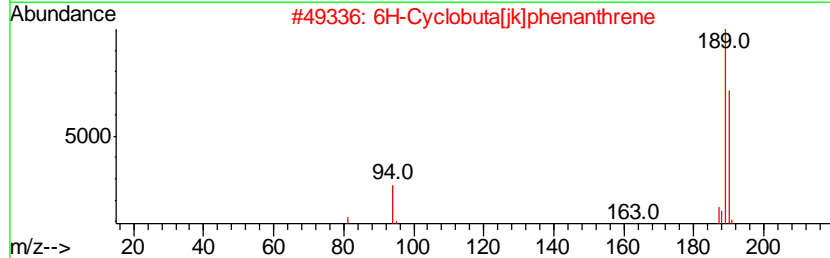
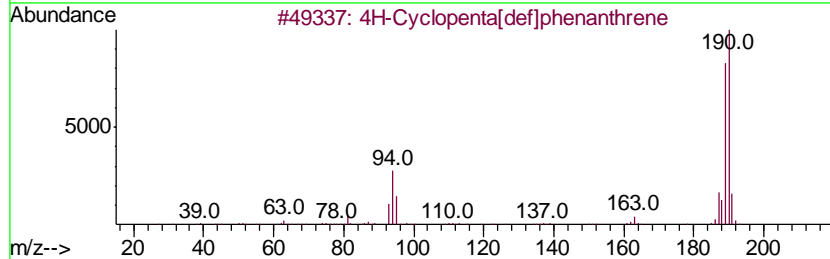
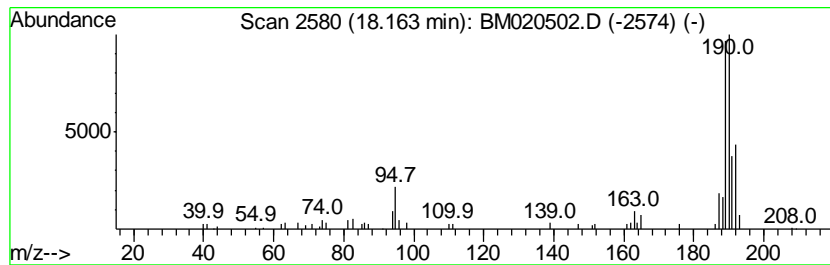
Quant Method : Z:\SVOASRV\HPCHEM1\BNA_M\METHODS\SOM-EPA-BM051619MA.M
 Quant Title : SVOA CALIBRATION

TIC Library : C:\DATABASE\NIST02.L
 TIC Integration Parameters: LSCINT.P

 Peak Number 2 4H-Cyclopenta[def]phenanthrene Concentration Rank 5

R.T.	EstConc	Area	Relative to ISTD	R.T.
18.16	2.12 ng/ul	117071	Phenanthrene-d10	17.09

Hit#	of	Tentative ID	MW	MolForm	CAS#	Qual
1	5	4H-Cyclopenta[def]phenanthrene	190	C15H10	000203-64-5	58
2		6H-Cyclobuta[jk]phenanthrene	190	C15H10	083469-43-6	49
3		4H-Cyclopenta[def]phenanthrene	190	C15H10	000203-64-5	46
4		Benzene, 1,1'-(1,2-propadienyld...	192	C15H12	014251-57-1	35
5		8,9-Dihydrocyclopenta[def]phenan...	192	C15H12	027410-55-5	30



Data Path : Z:\SVOASRV\HPCHEM1\BNA M\DATA\BM052219\
 Data File : BM020502.D
 Acq On : 22 May 2019 21:35
 Operator : JU/SJ
 Sample : K2927-01
 Misc :
 ALS Vial : 8 Sample Multiplier: 1

Instrument :
 BNA_M
 ClientSampled :
 A4292

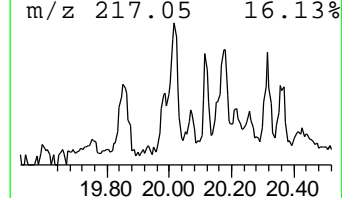
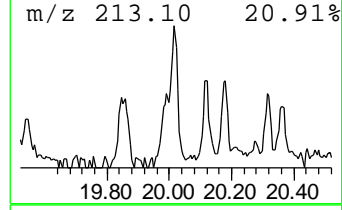
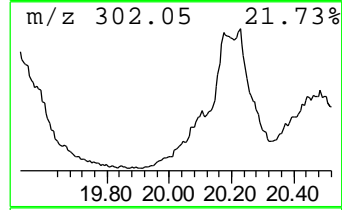
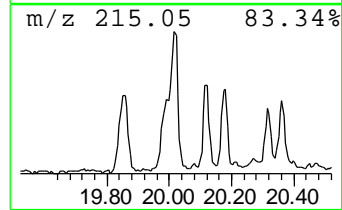
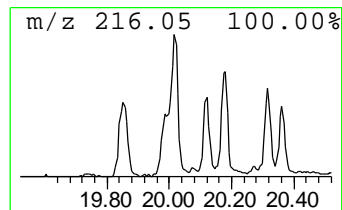
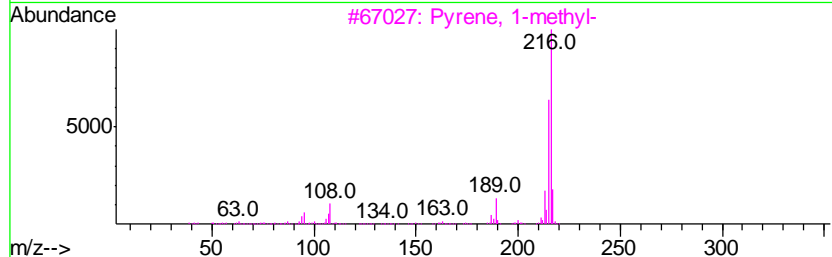
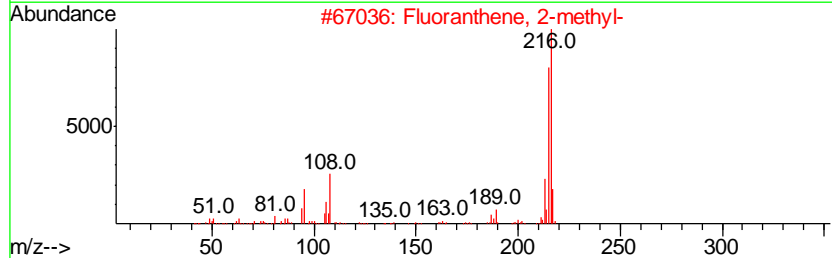
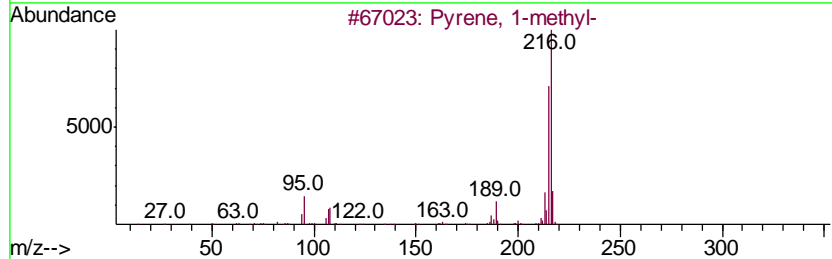
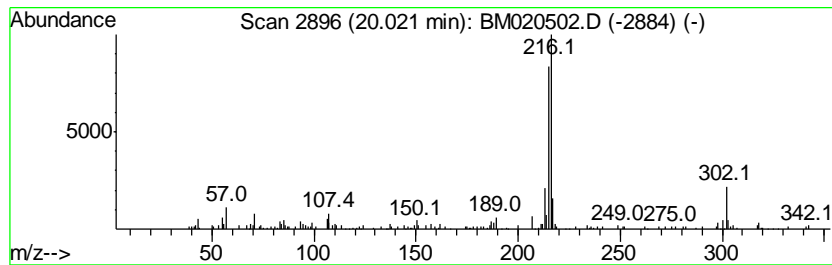
Quant Method : Z:\SVOASRV\HPCHEM1\BNA_M\METHODS\SOM-EPA-BM051619MA.M
 Quant Title : SVOA CALIBRATION

TIC Library : C:\DATABASE\NIST02.L
 TIC Integration Parameters: LSCINT.P

 Peak Number 3 Pyrene, 1-methyl- Concentration Rank 2

R.T.	EstConc	Area	Relative to ISTD	R.T.
20.02	3.36 ng/ul	315411	Chrysene-d12	21.29

Hit#	of	Tentative ID	MW	MolForm	CAS#	Qual
1	5	Pyrene, 1-methyl-	216	C17H12	002381-21-7	93
2		Fluoranthene, 2-methyl-	216	C17H12	033543-31-6	90
3		Pyrene, 1-methyl-	216	C17H12	002381-21-7	90
4		11H-Benzo[a]fluorene	216	C17H12	000238-84-6	87
5		11H-Benzo[b]fluorene	216	C17H12	000243-17-4	81



Data Path : Z:\SVOASRV\HPCHEM1\BNA M\DATA\BM052219\
 Data File : BM020502.D
 Acq On : 22 May 2019 21:35
 Operator : JU/SJ
 Sample : K2927-01
 Misc :
 ALS Vial : 8 Sample Multiplier: 1

Instrument :
 BNA_M
 ClientSampled :
 A4292

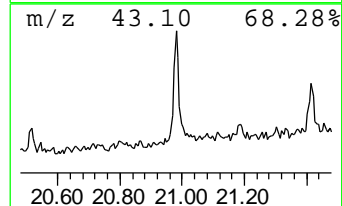
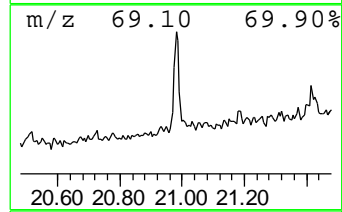
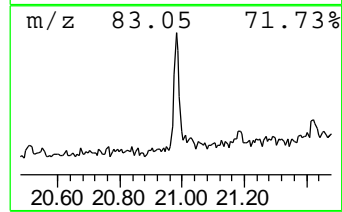
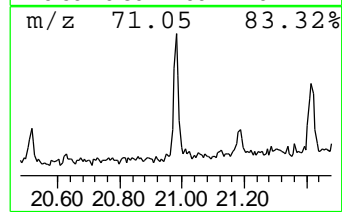
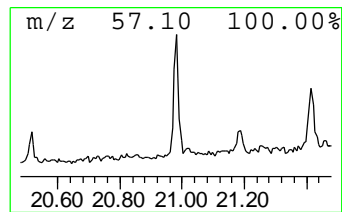
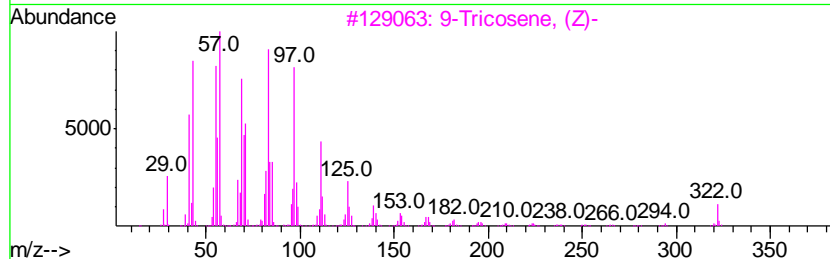
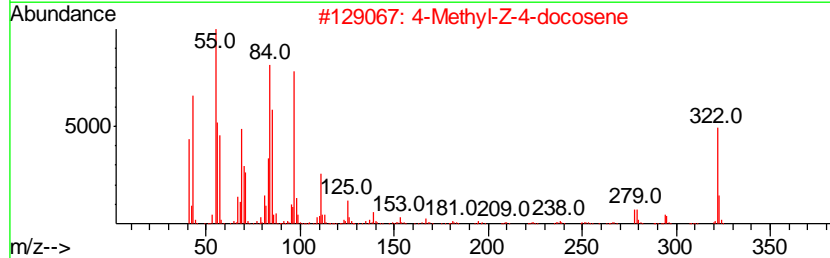
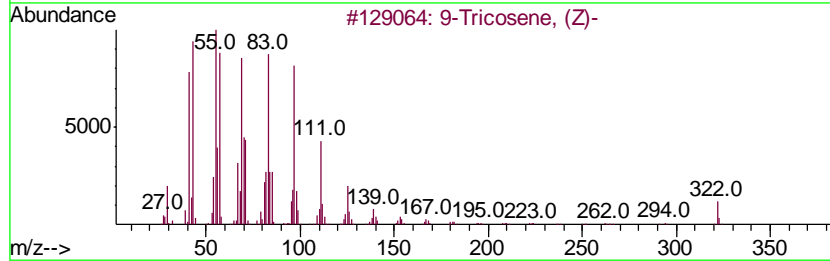
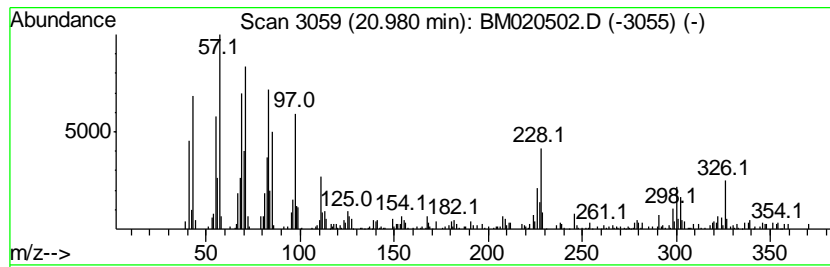
Quant Method : Z:\SVOASRV\HPCHEM1\BNA_M\METHODS\SOM-EPA-BM051619MA.M
 Quant Title : SVOA CALIBRATION

TIC Library : C:\DATABASE\NIST02.L
 TIC Integration Parameters: LSCINT.P

 Peak Number 4 (DEL) Alkane: Cyclic20.98 Concentration Rank 3

R.T.	EstConc	Area	Relative to ISTD	R.T.
20.98	2.43 ng/ul	228076	Chrysene-d12	21.29

Hit#	of	Tentative ID	MW	MolForm	CAS#	Qual
1	5	9-Tricosene, (Z)-	322	C23H46	027519-02-4	48
2		4-Methyl-Z-4-docosene	322	C23H46	1000131-17-0	35
3		9-Tricosene, (Z)-	322	C23H46	027519-02-4	25
4		9-Tricosene, (Z)-	322	C23H46	027519-02-4	25
5		1-Heptadecanamine	255	C17H37N	004200-95-7	16



Data Path : Z:\SVOASRV\HPCHEM1\BNA M\DATA\BM052219\
 Data File : BM020502.D
 Acq On : 22 May 2019 21:35
 Operator : JU/SJ
 Sample : K2927-01
 Misc :
 ALS Vial : 8 Sample Multiplier: 1

Instrument :
 BNA_M
 ClientSampleID :
 A4292

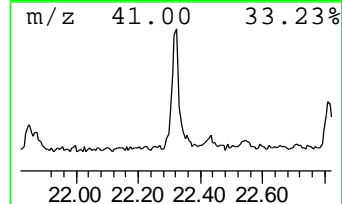
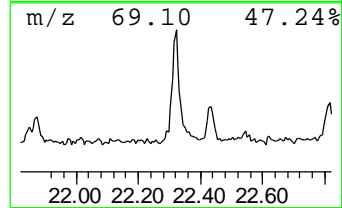
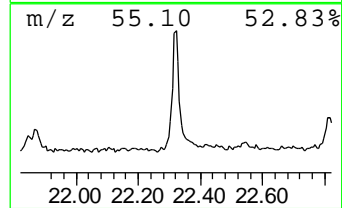
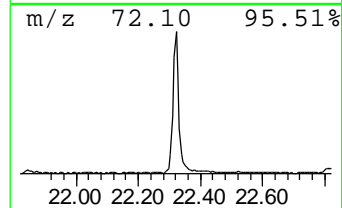
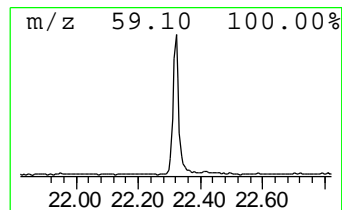
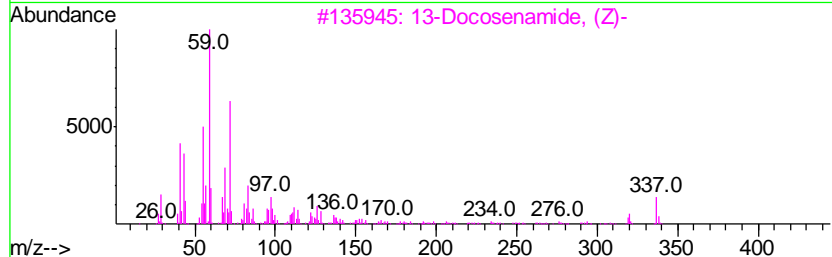
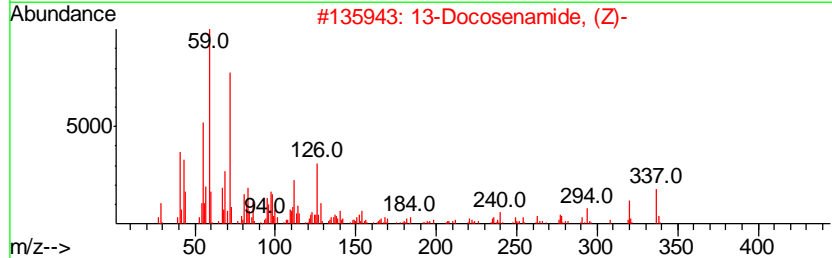
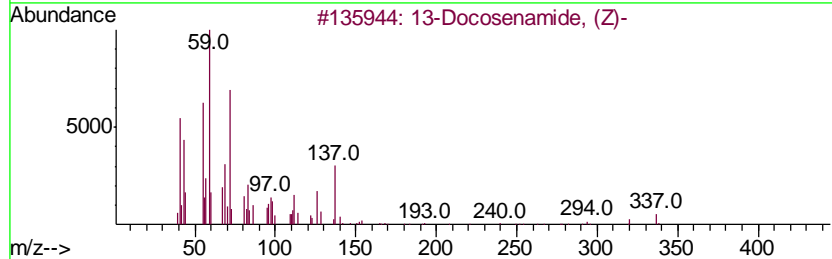
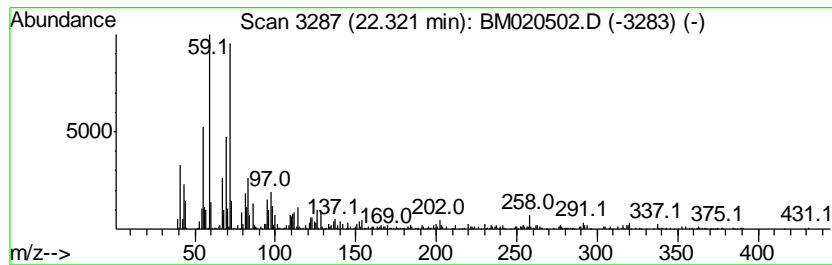
Quant Method : Z:\SVOASRV\HPCHEM1\BNA_M\METHODS\SOM-EPA-BM051619MA.M
 Quant Title : SVOA CALIBRATION

TIC Library : C:\DATABASE\NIST02.L
 TIC Integration Parameters: LSCINT.P

 Peak Number 5 13-Docosenamide, (Z)- Concentration Rank 1

R.T.	EstConc	Area	Relative to ISTD	R.T.
22.32	9.25 ng/ul	867493	Chrysene-d12	21.29

Hit#	of	Tentative ID	MW	MolForm	CAS#	Qual
1	5	13-Docosenamide, (Z)-	337	C22H43NO	000112-84-5	72
2		13-Docosenamide, (Z)-	337	C22H43NO	000112-84-5	70
3		13-Docosenamide, (Z)-	337	C22H43NO	000112-84-5	58
4		9-Octadecenamide, (Z)-	281	C18H35NO	000301-02-0	46
5		2-Octanol, 2-methyl-6-methylene-	156	C10H20O	018479-59-9	43



Data Path : Z:\SVOASRV\HPCHEM1\BNA_M\DATA\BM052219\
 Data File : BM020502.D
 Acq On : 22 May 2019 21:35
 Operator : JU/SJ
 Sample : K2927-01
 Misc :
 ALS Vial : 8 Sample Multiplier: 1

Instrument :
 BNA_M
 ClientSampleId :
 A4292

Quant Method : Z:\SVOASRV\HPCHEM1\BNA_M\METHODS\SOM-EPA-BM051619MA.M
 Quant Title : SVOA CALIBRATION

TIC Library : C:\DATABASE\NIST02.L
 TIC Integration Parameters: LSCINT.P

TIC Top Hit name	RT	EstConc	Units	Response	--Internal Standard--			
					#	RT	Resp	Conc
Phenanthrene, 1-m...	17.97	2.4	ng/ul	129993	4	17.09	1102530	20.0
4H-Cyclopenta[def...	18.16	2.1	ng/ul	117071	4	17.09	1102530	20.0
Pyrene, 1-methyl-	20.02	3.4	ng/ul	315411	5	21.29	1875140	20.0
(DEL) Alkane: Cyc...	20.98	2.4	ng/ul	228076	5	21.29	1875140	20.0
13-Docosenamide, ...	22.32	9.3	ng/ul	867493	5	21.29	1875140	20.0