

Data Path : Z:\SVOASRV\HPCHEM1\BNA M\DATA\BM060818\
 Data File : BM015574.D
 Acq On : 08 Jun 2018 21:35
 Operator : SJ/JU
 Sample : J3345-01
 Misc :
 ALS Vial : 18 Sample Multiplier: 1

Instrument :
 BNA_M
 ClientSampleId :
 DAXFO

Integration Parameters: LSCINT.P

Integrator: RTE
 Smoothing : OFF
 Sampling : 1
 Start Thrs: 0.2
 Stop Thrs : 0

Filtering: 5
 Min Area: 1 % of largest Peak
 Max Peaks: 100
 Peak Location: TOP

If leading or trailing edge < 100 prefer < Baseline drop else tangent >
 Peak separation: 5

Method : Z:\SVOASRV\HPCHEM1\BNA_M\METHODS\SOM-EPA-BM060818MA.M
 Title : SVOA CALIBRATION

Signal : TIC

| peak # | R.T. min | first scan | max scan | last scan | PK TY | peak height | corr. area | corr. % max. | % of total |
|--------|----------|------------|----------|-----------|-------|-------------|------------|--------------|------------|
| 1 | 7.492 | 710 | 715 | 725 | rBV | 55705 | 97306 | 2.45% | 0.360% |
| 2 | 7.657 | 735 | 743 | 754 | rBV | 234314 | 392120 | 9.89% | 1.450% |
| 3 | 7.869 | 773 | 779 | 791 | rBV | 246997 | 427587 | 10.78% | 1.581% |
| 4 | 8.345 | 853 | 860 | 872 | rBV | 236394 | 397252 | 10.02% | 1.469% |
| 5 | 9.051 | 975 | 980 | 993 | rBV | 187731 | 330068 | 8.33% | 1.221% |
| 6 | 9.528 | 1055 | 1061 | 1077 | rBV | 327041 | 578580 | 14.59% | 2.140% |
| 7 | 10.257 | 1178 | 1185 | 1201 | rBV | 284716 | 482855 | 12.18% | 1.786% |
| 8 | 10.792 | 1270 | 1276 | 1291 | rBV | 409191 | 706473 | 17.82% | 2.613% |
| 9 | 11.174 | 1334 | 1341 | 1354 | rBV | 395131 | 664594 | 16.76% | 2.458% |
| 10 | 14.357 | 1876 | 1882 | 1895 | rBV | 1060725 | 1466836 | 37.00% | 5.424% |
| 11 | 14.662 | 1927 | 1934 | 1945 | rBV | 1081476 | 1563236 | 39.43% | 5.781% |
| 12 | 14.962 | 1978 | 1985 | 1998 | rBV2 | 677399 | 1052890 | 26.56% | 3.894% |
| 13 | 15.157 | 2013 | 2018 | 2034 | rBV2 | 58538 | 120693 | 3.04% | 0.446% |
| 14 | 15.945 | 2145 | 2152 | 2163 | rVB | 1530919 | 2183034 | 55.06% | 8.073% |
| 15 | 16.068 | 2168 | 2173 | 2179 | rVV | 512198 | 688446 | 17.36% | 2.546% |
| 16 | 17.686 | 2441 | 2448 | 2455 | rBV | 984697 | 1427659 | 36.01% | 5.280% |
| 17 | 17.780 | 2458 | 2464 | 2476 | rVV2 | 1813690 | 2554041 | 64.42% | 9.445% |
| 18 | 18.515 | 2585 | 2589 | 2598 | rBV | 125321 | 171111 | 4.32% | 0.633% |
| 19 | 19.768 | 2797 | 2802 | 2810 | rBV | 170175 | 236936 | 5.98% | 0.876% |
| 20 | 20.033 | 2841 | 2847 | 2854 | rBV | 2436665 | 3194248 | 80.57% | 11.813% |
| 21 | 21.786 | 3140 | 3145 | 3152 | rBV | 1616718 | 2044389 | 51.56% | 7.560% |
| 22 | 24.050 | 3523 | 3530 | 3538 | rVB | 1983358 | 3964724 | 100.00% | 14.662% |
| 23 | 24.203 | 3549 | 3556 | 3567 | rVB2 | 1118405 | 2296119 | 57.91% | 8.491% |

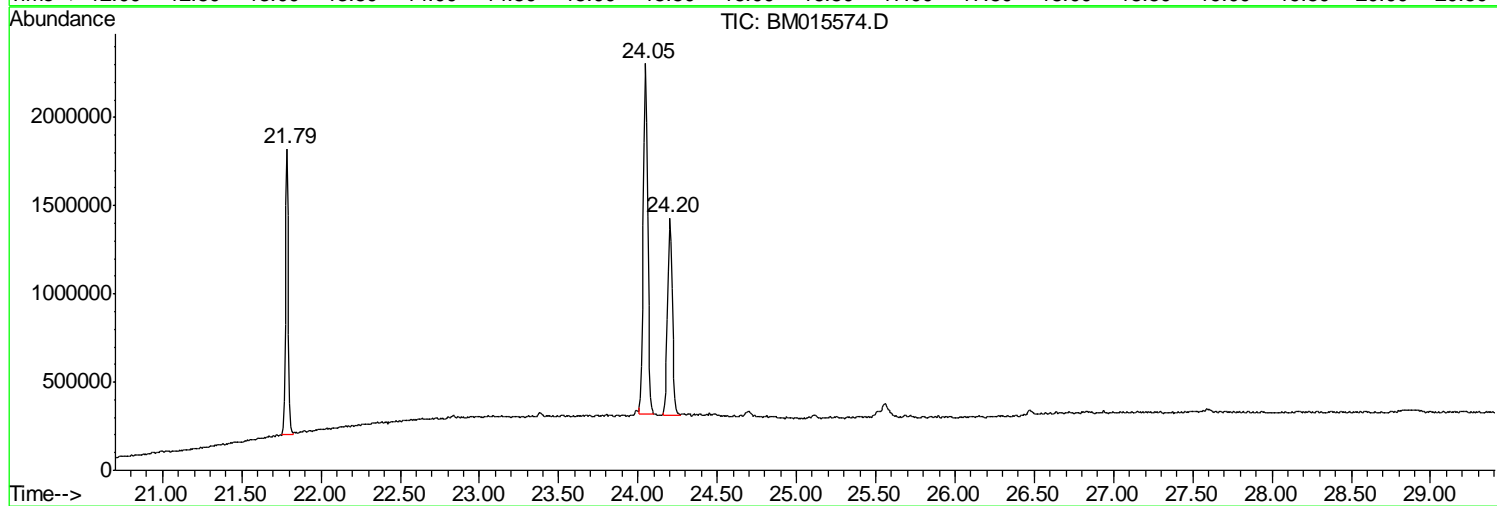
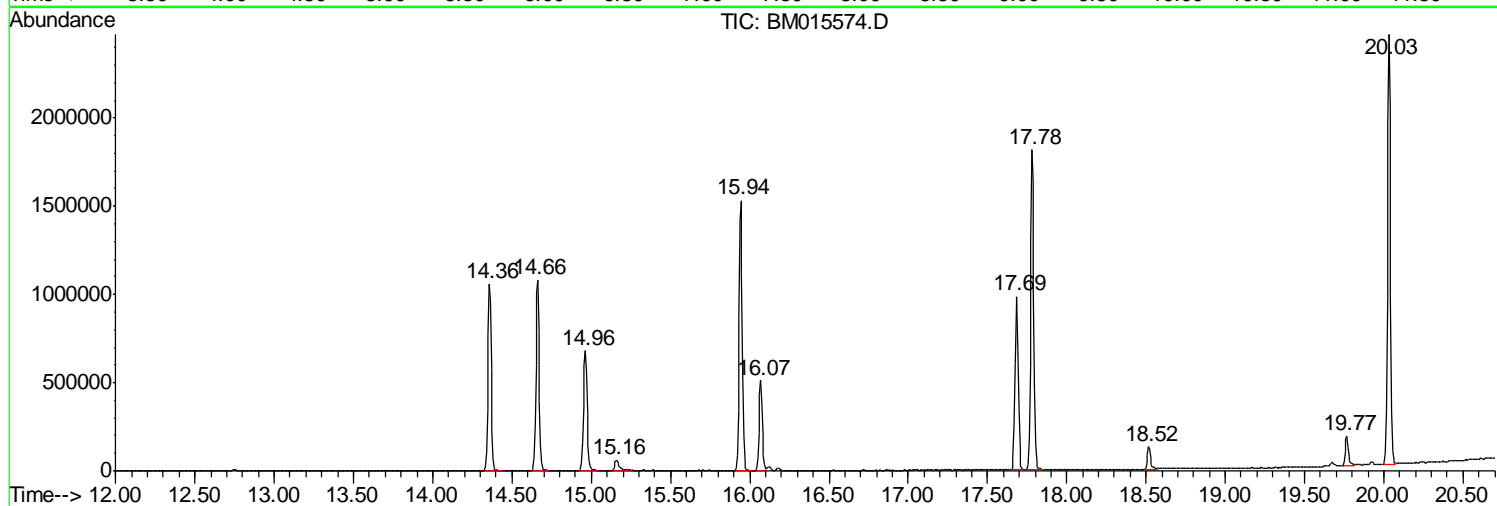
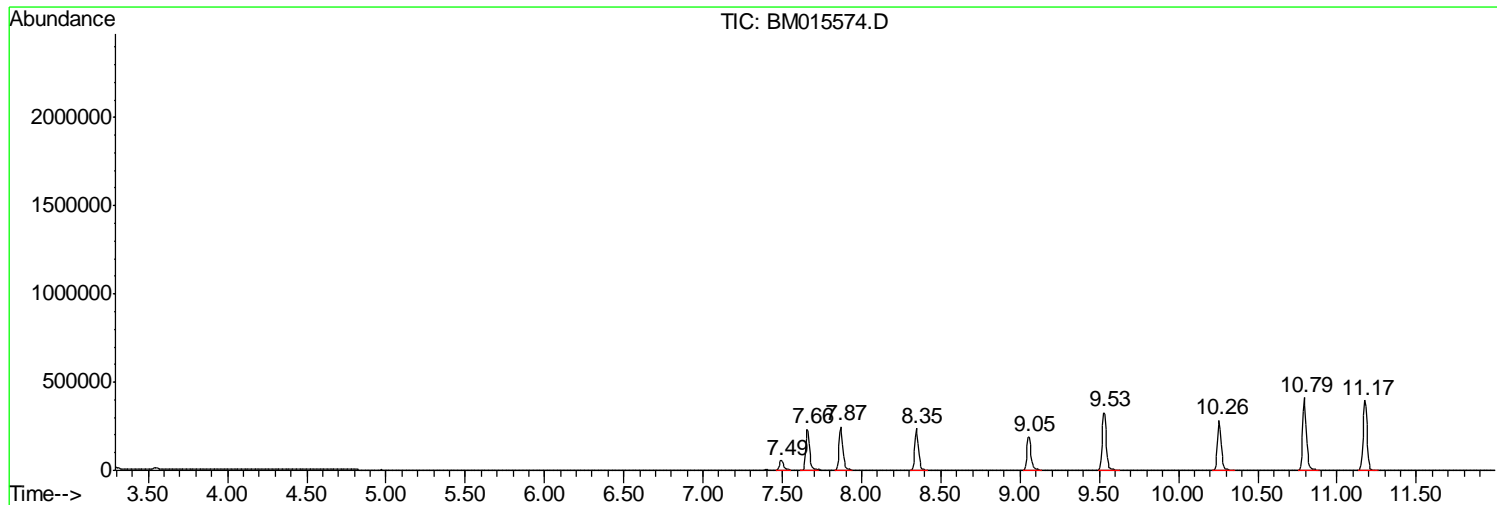
Sum of corrected areas: 27041197

Data Path : Z:\SVOASRV\HPCHEM1\BNA M\DATA\BM060818\
 Data File : BM015574.D
 Acq On : 08 Jun 2018 21:35
 Operator : SJ/JU
 Sample : J3345-01
 Misc :
 ALS Vial : 18 Sample Multiplier: 1

Instrument :
 BNA_M
 ClientSampleId :
 DAXFO

Quant Method : Z:\SVOASRV\HPCHEM1\BNA_M\METHODS\SOM-EPA-BM060818MA.M
 Quant Title : SVOA CALIBRATION

TIC Library : C:\Database\NIST11.L
 TIC Integration Parameters: LSCINT.P



Data Path : Z:\SVOASRV\HPCHEM1\BNA M\DATA\BM060818\
 Data File : BM015574.D
 Acq On : 08 Jun 2018 21:35
 Operator : SJ/JU
 Sample : J3345-01
 Misc :
 ALS Vial : 18 Sample Multiplier: 1

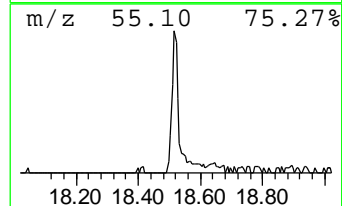
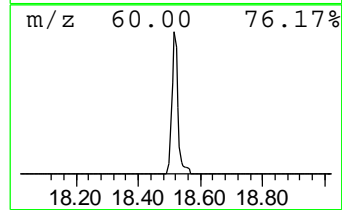
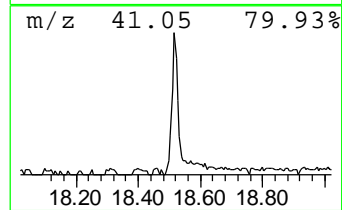
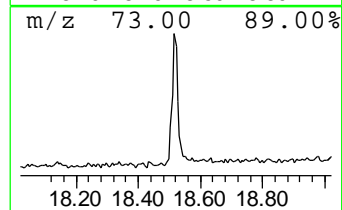
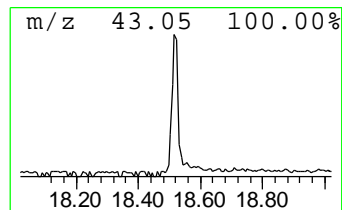
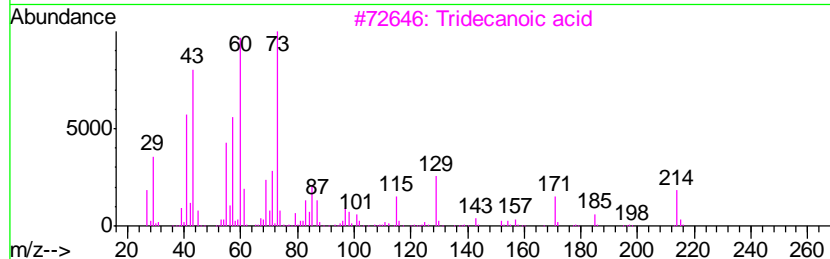
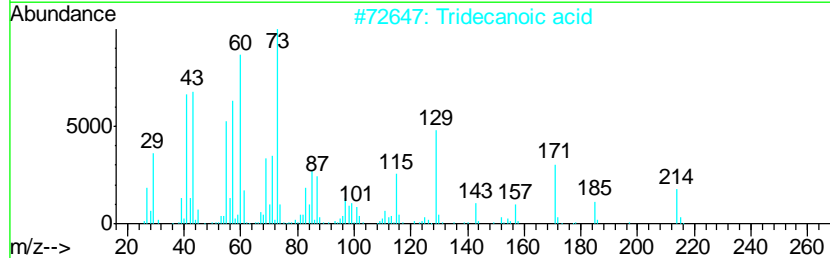
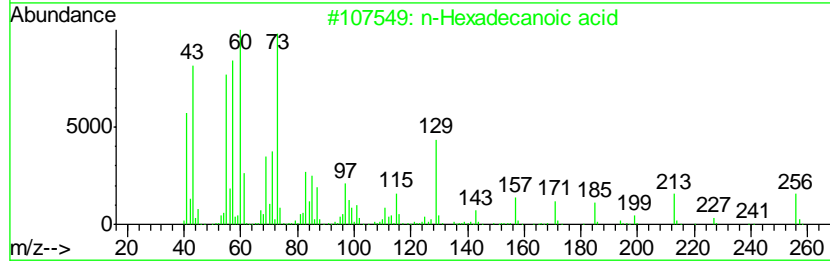
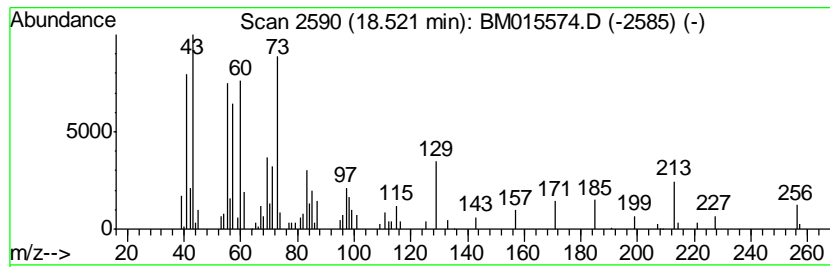
Instrument :
 BNA_M
 ClientSampled :
 DAXFO

Quant Method : Z:\SVOASRV\HPCHEM1\BNA_M\METHODS\SOM-EPA-BM060818MA.M
 Quant Title : SVOA CALIBRATION

TIC Library : C:\Database\NIST11.L
 TIC Integration Parameters: LSCINT.P

 Peak Number 1 n-Hexadecanoic acid Concentration Rank 1

| R.T. | EstConc | Area | Relative to ISTD | R.T. | | |
|---------|------------|---------------------|------------------|----------|-------------|------|
| 18.52 | 2.40 ng/ul | 171111 | Phenanthrene-d10 | 17.69 | | |
| Hit# of | 5 | Tentative ID | MW | MolForm | CAS# | Qual |
| 1 | | n-Hexadecanoic acid | 256 | C16H32O2 | 000057-10-3 | 94 |
| 2 | | Tridecanoic acid | 214 | C13H26O2 | 000638-53-9 | 92 |
| 3 | | Tridecanoic acid | 214 | C13H26O2 | 000638-53-9 | 89 |
| 4 | | n-Hexadecanoic acid | 256 | C16H32O2 | 000057-10-3 | 87 |
| 5 | | Tridecanoic acid | 214 | C13H26O2 | 000638-53-9 | 83 |



Data Path : Z:\SVOASRV\HPCHEM1\BNA M\DATA\BM060818\
 Data File : BM015574.D
 Acq On : 08 Jun 2018 21:35
 Operator : SJ/JU
 Sample : J3345-01
 Misc :
 ALS Vial : 18 Sample Multiplier: 1

Instrument :
 BNA_M
 ClientSampleID :
 DAXFO

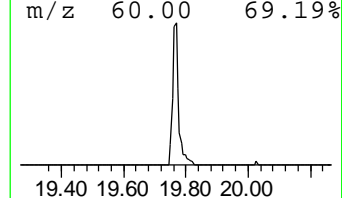
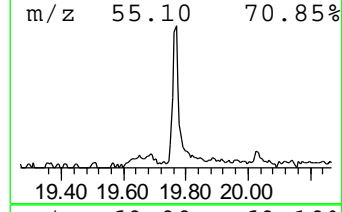
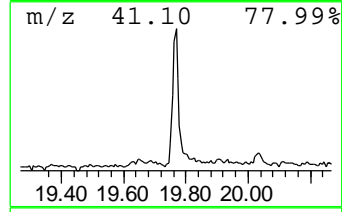
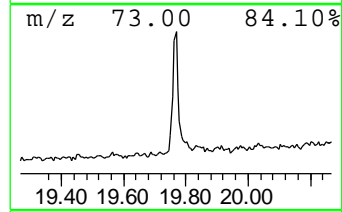
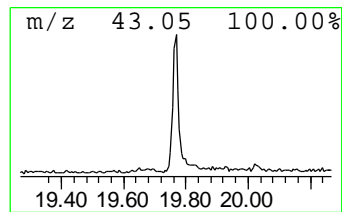
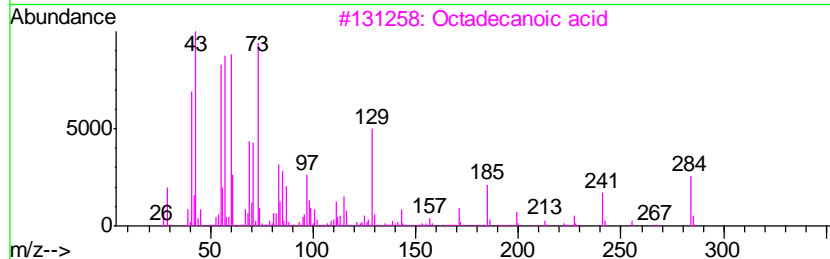
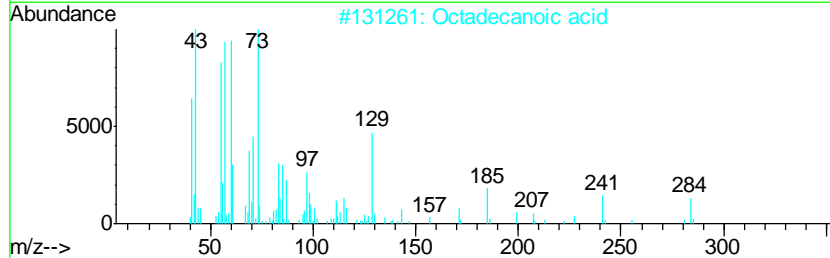
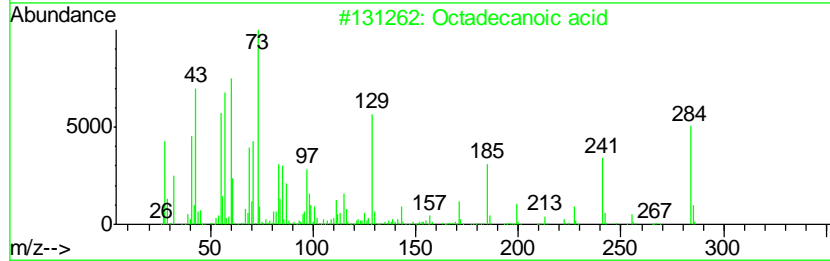
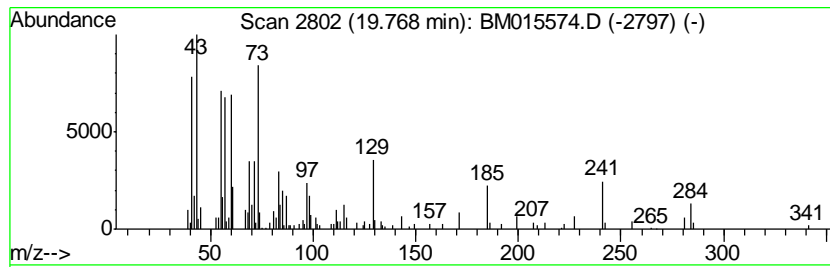
Quant Method : Z:\SVOASRV\HPCHEM1\BNA_M\METHODS\SOM-EPA-BM060818MA.M
 Quant Title : SVOA CALIBRATION

TIC Library : C:\Database\NIST11.L
 TIC Integration Parameters: LSCINT.P

 Peak Number 2 Octadecanoic acid Concentration Rank 2

| R.T. | EstConc | Area | Relative to ISTD | R.T. |
|-------|------------|--------|------------------|-------|
| 19.77 | 2.32 ng/ul | 236936 | Chrysene-d12 | 21.79 |

| Hit# | of | Tentative ID | MW | MolForm | CAS# | Qual |
|------|----|-------------------------------------|-----|----------|-------------|------|
| 1 | 5 | Octadecanoic acid | 284 | C18H36O2 | 000057-11-4 | 99 |
| 2 | | Octadecanoic acid | 284 | C18H36O2 | 000057-11-4 | 99 |
| 3 | | Octadecanoic acid | 284 | C18H36O2 | 000057-11-4 | 98 |
| 4 | | Octadecanoic acid | 284 | C18H36O2 | 000057-11-4 | 98 |
| 5 | | Octadecanoic acid, 2-(2-hydroxye... | 372 | C22H44O4 | 000106-11-6 | 83 |



Data Path : Z:\SVOASRV\HPCHEM1\BNA_M\DATA\BM060818\
Data File : BM015574.D
Acq On : 08 Jun 2018 21:35
Operator : SJ/JU
Sample : J3345-01
Misc :
ALS Vial : 18 Sample Multiplier: 1

Instrument :
BNA_M
ClientSampleId :
DAXF0

Quant Method : Z:\SVOASRV\HPCHEM1\BNA_M\METHODS\SOM-EPA-BM060818MA.M
Quant Title : SVOA CALIBRATION

TIC Library : C:\Database\NIST11.L
TIC Integration Parameters: LSCINT.P

| TIC Top Hit name | RT | EstConc | Units | Response | --Internal Standard-- | | | |
|---------------------|-------|---------|-------|----------|-----------------------|-------|---------|------|
| | | | | | # | RT | Resp | Conc |
| n-Hexadecanoic acid | 18.52 | 2.4 | ng/ul | 171111 | 4 | 17.69 | 1427660 | 20.0 |
| Octadecanoic acid | 19.77 | 2.3 | ng/ul | 236936 | 5 | 21.79 | 2044390 | 20.0 |