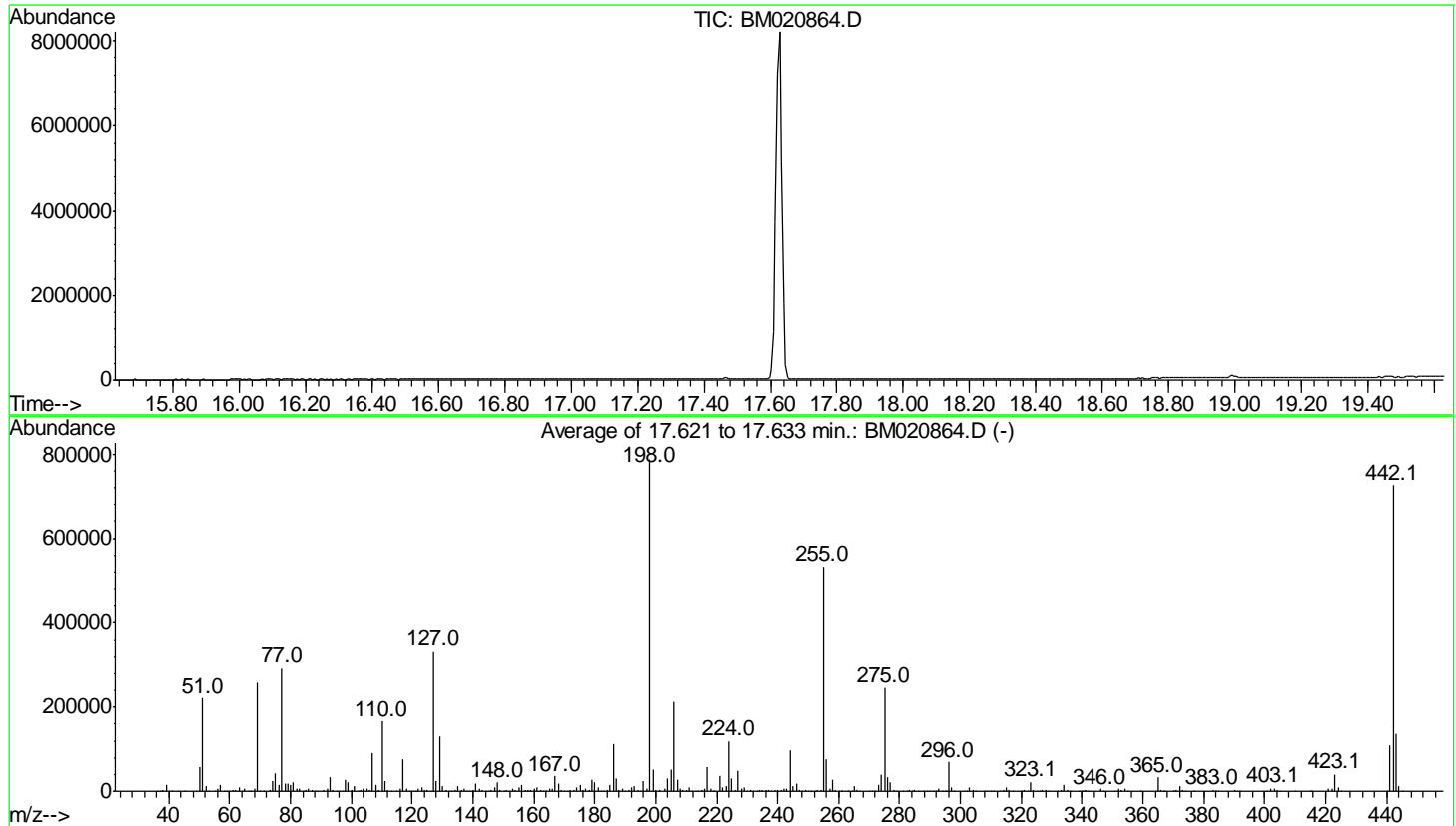


Data Path : Z:\svoasrv\HPCHEM1\BNA M\Data\BM061119\
 Data File : BM020864.D
 Acq On : 11 Jun 2019 08:54
 Operator : HP/JU
 Sample : DFTPP06
 Misc :
 ALS Vial : 1 Sample Multiplier: 1

Instrument :
 BNA_M
 ClientSampleId :
 DFTPP06

Integration File: LSCINT.P

Method : Z:\SVOASRV\HPCHEM1\BNA_M\METHODS\SOM-EPA-BM060619MA.M
 Title : SVOA CALIBRATION
 Last Update : Sun Jun 09 01:02:58 2019



AutoFind: Scans 2488, 2489, 2490; Background Corrected with Scan 2482

Target Mass	Rel. to Mass	Lower Limit%	Upper Limit%	Rel. Abn%	Raw Abn	Result Pass/Fail
51	198	10	80	28.1	220968	PASS
68	69	0.00	2	1.9	4986	PASS
69	198	0.00	100	32.9	258752	PASS
70	69	0.00	2	0.5	1291	PASS
127	198	10	80	42.2	332096	PASS
197	198	0.00	2	0.8	6005	PASS
198	198	100	100	100.0	787434	PASS
199	198	5	9	6.7	52778	PASS
275	198	10	60	31.2	245760	PASS
365	198	1	100	4.2	33282	PASS
441	198	0.01	100	14.1	110898	PASS
442	198	50	100	92.1	725098	PASS
443	442	15	24	19.1	138136	PASS

m/z	Abundance
39.10	304.0
40.00	4036.0
41.00	439.0
43.00	318.0
44.00	6240.0
49.00	777.0
51.00	301.0
55.10	308.0
73.10	947.0
77.00	333.0
83.90	626.0
86.00	512.0
90.90	340.0
96.10	359.0
133.00	464.0
147.00	375.0
167.00	308.0
191.10	549.0
192.90	422.0
207.00	3903.0
208.10	789.0
209.00	638.0
281.00	1079.0

Instrument :
BNA_M
ClientSampleId :
DFTPP06

m/z	Abundance
36.10	329.0
37.00	1054.0
38.10	3531.0
39.10	20176.0
40.00	4298.0
41.00	804.0
43.10	378.0
44.10	5096.0
44.90	795.0
49.10	2486.0
50.10	68360.0
51.10	266368.0
52.10	13161.0
53.10	656.0
55.10	1632.0
56.00	8190.0
57.00	19760.0
58.00	1039.0
59.90	335.0
61.00	3105.0
62.00	3993.0
63.10	11473.0
64.00	2055.0
65.00	5531.0
66.10	421.0
67.10	706.0
68.10	5814.0
69.00	310144.0
70.00	1721.0
71.00	409.0
73.10	2828.0
74.00	30608.0
75.00	49208.0
76.10	16377.0
77.10	347712.0
78.10	24152.0
79.00	23840.0
80.00	17344.0
81.00	24480.0
82.00	6095.0
83.00	6174.0
84.00	1512.0
85.00	4118.0
86.00	7447.0
87.00	2885.0
88.10	1226.0
88.90	450.0
91.00	5864.0
92.00	6622.0
93.00	38584.0
94.00	2716.0
95.10	944.0
96.00	1691.0
97.00	860.0
98.00	30912.0
99.00	24088.0
100.00	2130.0
101.00	14855.0
102.00	709.0
103.00	4505.0
104.00	8617.0
105.00	9445.0
106.10	2647.0
107.00	110072.0
108.00	16936.0
109.10	3304.0
110.00	190912.0
111.00	28840.0
112.00	3815.0
113.00	1223.0
115.10	785.0
116.00	5871.0
117.00	85352.0
118.00	6972.0
119.00	869.0
120.00	1244.0
121.00	572.0
122.00	6867.0
123.00	10925.0
124.00	4989.0
125.00	4573.0
127.00	381184.0
128.00	29496.0
129.00	147392.0
130.00	13974.0
131.00	2746.0
132.00	1213.0
133.00	857.0
134.10	4676.0
135.10	12146.0
136.10	4604.0
137.10	7221.0

Instrument :
BNA_M
ClientSampleId :
DFTPP06

138.00	1501.0
138.90	1013.0
140.00	1993.0
141.00	21256.0
142.00	6998.0
143.00	4965.0
144.10	1610.0
145.00	1073.0
146.00	3513.0
147.00	10205.0
148.00	23256.0
149.00	4394.0
150.10	993.0
151.20	2182.0
152.00	1663.0
153.00	6358.0
154.00	4606.0
155.00	11851.0
156.00	16736.0
157.10	3854.0
157.90	4385.0
159.10	2969.0
160.00	7159.0
161.00	10257.0
162.00	2535.0
163.00	861.0
163.90	1046.0
165.00	8780.0
166.00	6732.0
167.00	41672.0
168.00	21104.0
169.00	3574.0
170.10	1170.0
171.00	1945.0
172.00	4302.0
173.00	4691.0
174.00	9159.0
175.00	15943.0
176.00	5239.0
177.00	7379.0
178.00	2900.0
179.00	31616.0
180.00	23128.0
181.00	10122.0
182.00	1627.0
183.00	996.0
184.00	1943.0
185.10	15907.0
186.00	124072.0
187.00	35112.0
188.00	3717.0
189.00	7912.0
190.00	1302.0
191.00	4514.0
192.00	10610.0
193.00	12071.0
194.00	2277.0
195.00	1928.0
196.00	24632.0
197.10	6477.0
198.00	841664.0
199.00	58704.0
200.00	4861.0
201.60	3907.0
203.00	6212.0
204.00	30624.0
205.00	54336.0
206.00	227200.0
207.00	34592.0
208.00	9289.0
209.00	2694.0
210.30	3704.0
211.10	8725.0
213.00	853.0
214.00	428.0
215.00	2662.0
216.00	5015.0
217.00	61248.0
218.00	7457.0
218.90	568.0
221.00	38936.0
221.80	8524.0
223.00	12283.0
224.00	123728.0
225.00	33856.0
226.00	3677.0
227.00	50584.0
228.00	7087.0
229.00	10834.0
230.00	1600.0
231.00	4833.0
232.10	1049.0
233.10	1275.0
234.00	3233.0
235.00	3674.0
236.00	2501.0

Instrument :
BNA_M
ClientSampleId :
DFTPP06

237.00	4592.0
238.00	984.0
239.10	1946.0
240.00	1857.0
241.00	2876.0
242.00	5967.0
243.10	7265.0
244.00	98320.0
245.00	13499.0
246.00	18848.0
247.00	3607.0
248.00	1007.0
249.00	3493.0
250.00	694.0
251.00	896.0
252.00	1035.0
253.10	2191.0
254.20	4498.0
255.00	535552.0
256.00	77336.0
257.10	6526.0
258.00	28768.0
259.00	4700.0
260.00	865.0
260.90	1036.0
264.10	891.0
265.00	12703.0
266.00	1999.0
269.90	722.0
271.00	1345.0
272.00	1348.0
273.00	15559.0
274.00	42096.0
275.00	245760.0
276.00	32728.0
277.00	19528.0
278.00	3667.0
279.00	715.0
281.00	1205.0
282.10	705.0
283.00	2879.0
284.00	1676.0
285.00	3897.0
286.10	842.0
289.00	915.0
290.10	572.0
291.00	628.0
292.00	1006.0
293.00	4057.0
294.00	1281.0
295.20	1292.0
296.00	67448.0
297.00	9959.0
298.00	936.0
301.00	992.0
302.00	1237.0
303.00	7159.0
304.00	2403.0
307.90	891.0
308.90	664.0
309.90	988.0
313.00	696.0
314.10	3244.0
315.00	6993.0
316.10	3876.0
317.10	1260.0
320.10	351.0
321.00	2573.0
322.00	1256.0
323.00	20600.0
324.00	4232.0
325.10	420.0
326.10	460.0
327.00	4301.0
328.00	1862.0
328.90	425.0
332.00	1285.0
333.10	1958.0
334.00	14171.0
335.00	3751.0
336.00	542.0
339.10	393.0
339.80	316.0
341.10	2326.0
342.10	843.0
346.00	5353.0
346.90	993.0
350.90	339.0
352.10	6458.0
353.00	4463.0
354.00	6964.0
355.00	1445.0
359.00	514.0
365.00	29832.0
366.00	3964.0
366.90	325.0

Instrument :
BNA_M
ClientSampleId :
DFTPP06

369.90	585.0
371.00	1779.0
372.00	11225.0
373.00	2732.0
374.00	419.0
383.00	3207.0
383.90	766.0
390.10	1738.0
391.00	1128.0
392.10	773.0
400.90	633.0
402.00	4763.0
403.10	5595.0
404.10	2360.0
404.90	405.0
415.00	329.0
421.00	4985.0
422.00	4700.0
423.10	33752.0
424.10	8488.0
425.00	828.0
440.20	722.0
441.10	90944.0
442.10	593664.0
443.10	117096.0
444.10	11343.0
445.10	650.0

Instrument :
BNA_M
ClientSampleId :
DFTPP06

m/z	Abundance
37.10	1477.0
38.10	3409.0
39.10	19864.0
40.00	4287.0
41.10	794.0
43.20	333.0
44.00	5895.0
45.00	590.0
49.10	2316.0
50.10	66664.0
51.10	259776.0
52.10	13362.0
53.10	851.0
55.00	1631.0
56.00	8136.0
57.00	17832.0
58.10	747.0
59.00	397.0
61.10	3727.0
62.10	3966.0
63.10	11239.0
64.10	1261.0
65.00	6293.0
66.00	375.0
67.10	684.0
68.10	5914.0
69.00	303232.0
70.10	1303.0
73.10	3010.0
74.00	30472.0
75.10	47584.0
76.10	17104.0
77.10	345856.0
78.10	21848.0
79.00	21992.0
80.00	18104.0
81.00	24328.0
82.10	7310.0
83.00	5531.0
84.10	1099.0
85.10	4627.0
86.00	7217.0
87.00	3251.0
88.00	1251.0
89.00	581.0
91.00	5625.0
92.10	6059.0
93.00	39064.0
94.00	2940.0
95.00	771.0
96.10	1947.0
97.10	904.0
98.00	31728.0
99.00	23456.0
100.10	2086.0
101.00	13743.0
102.10	744.0
103.00	5318.0
104.00	8146.0
105.00	8716.0
106.10	2811.0
107.00	108088.0
108.10	16520.0
109.10	3169.0
110.00	197760.0
111.00	28216.0
112.00	4069.0
113.00	1376.0
114.90	845.0
116.10	5711.0
117.00	88744.0
118.00	6018.0
119.00	962.0
120.00	1463.0
121.00	711.0
122.10	6562.0
123.00	11393.0
124.00	5088.0
125.00	4702.0
126.20	2910.0
127.00	392704.0
128.00	28792.0
129.00	153664.0
130.00	12407.0
131.00	2694.0
132.10	1376.0
133.00	1072.0
134.00	5167.0
135.10	13084.0
136.00	5021.0
137.10	5953.0
138.10	1229.0

Instrument :
BNA_M
ClientSampleId :
DFTPP06

138.90	1105.0
140.00	2134.0
141.00	21304.0
142.00	6852.0
142.90	4895.0
144.10	1068.0
144.90	1301.0
146.00	4061.0
147.00	11526.0
148.00	23656.0
149.00	5071.0
149.90	1126.0
151.00	3102.0
151.90	1359.0
153.00	6674.0
154.00	5483.0
155.00	12200.0
156.00	18000.0
157.10	3626.0
158.00	3690.0
159.00	2717.0
160.00	6517.0
161.00	9817.0
162.10	2804.0
162.90	716.0
164.10	1276.0
165.00	8345.0
166.10	6438.0
167.00	43288.0
168.00	21640.0
169.00	3458.0
170.00	1705.0
170.90	1982.0
172.00	4676.0
173.10	4935.0
174.00	9499.0
175.10	17144.0
176.00	5625.0
177.00	8086.0
178.00	2436.0
179.00	33904.0
180.00	24216.0
181.00	11136.0
182.00	1842.0
182.90	1308.0
184.00	2935.0
185.00	16584.0
186.00	133824.0
187.00	38184.0
188.00	3849.0
189.00	8738.0
190.00	1744.0
191.00	4280.0
192.00	11899.0
193.00	13699.0
194.00	3109.0
194.90	1753.0
196.00	27680.0
197.10	7179.0
198.00	954688.0
199.00	63864.0
200.00	5536.0
201.40	5258.0
203.00	7341.0
204.00	37384.0
205.00	61552.0
206.00	260608.0
207.00	36432.0
208.00	9024.0
209.00	3497.0
210.30	4688.0
211.00	9922.0
211.80	2274.0
213.10	735.0
214.10	448.0
215.00	3072.0
216.00	5778.0
217.00	67624.0
218.00	8639.0
218.90	1009.0
221.00	44040.0
221.90	9400.0
223.00	15131.0
224.00	143424.0
225.00	37368.0
226.00	3737.0
227.00	57864.0
228.00	8561.0
229.00	12757.0
230.00	2245.0
231.10	5167.0
232.00	921.0
232.90	1367.0
234.00	3378.0
235.00	4320.0
236.00	3031.0

Instrument :
BNA_M
ClientSampleId :
DFTPP06

237.00	5203.0
238.00	920.0
239.00	2385.0
240.00	2124.0
241.00	3484.0
242.00	7331.0
243.00	8074.0
244.00	117056.0
245.00	15278.0
246.00	23424.0
247.00	4519.0
248.00	1117.0
249.00	3858.0
250.00	910.0
251.00	937.0
252.00	1162.0
253.00	2395.0
254.20	5375.0
255.00	644480.0
256.00	92760.0
257.00	6918.0
258.00	34904.0
259.00	4943.0
260.00	1167.0
261.10	1262.0
262.80	375.0
264.00	1027.0
265.00	14567.0
266.00	2635.0
266.90	480.0
270.00	776.0
271.00	1391.0
272.00	2139.0
273.00	19216.0
274.00	49032.0
275.00	294528.0
276.00	39496.0
277.00	24088.0
278.00	3618.0
278.90	858.0
281.00	1404.0
282.10	707.0
283.00	2921.0
284.10	1462.0
285.00	3900.0
285.90	960.0
287.80	312.0
288.90	878.0
290.00	1071.0
290.90	746.0
292.00	1104.0
293.00	6408.0
294.10	1820.0
295.10	1456.0
296.00	80776.0
297.00	11813.0
298.00	903.0
301.00	1111.0
302.00	1397.0
303.00	10294.0
304.00	2543.0
305.00	429.0
308.00	1547.0
308.90	865.0
310.00	1037.0
310.90	355.0
312.90	840.0
314.10	4506.0
315.00	9424.0
316.10	5617.0
317.00	1228.0
319.90	303.0
321.00	2553.0
322.00	1701.0
323.10	26872.0
324.10	4973.0
325.00	661.0
326.00	526.0
327.00	5243.0
328.00	2826.0
328.90	458.0
332.00	2068.0
333.00	2614.0
334.00	17784.0
335.10	4505.0
336.00	700.0
339.00	469.0
340.10	538.0
341.00	3205.0
342.10	685.0
346.00	6612.0
347.00	916.0
351.00	535.0
352.00	8345.0
353.00	5682.0
354.10	8879.0

Instrument :
BNA_M
ClientSampleId :
DFTPP06

355.00	1699.0
358.90	699.0
364.10	395.0
365.00	39448.0
366.10	5875.0
367.10	385.0
370.10	1074.0
371.10	2091.0
372.10	15957.0
373.00	3563.0
374.00	718.0
376.90	358.0
383.10	4149.0
384.10	1127.0
384.90	401.0
390.10	2217.0
391.00	1484.0
392.00	1215.0
400.90	802.0
402.10	6010.0
403.10	8730.0
404.10	2959.0
405.00	643.0
410.10	338.0
415.00	468.0
421.00	6600.0
422.00	6859.0
423.10	51136.0
424.00	10194.0
425.00	1162.0
440.20	794.0
441.10	133504.0
442.10	870336.0
443.10	167808.0
444.10	15204.0
445.00	781.0

Instrument :
BNA_M
ClientSampleId :
DFTPP06

m/z	Abundance
37.00	892.0
38.10	1627.0
39.10	9842.0
40.00	4322.0
41.20	779.0
43.20	458.0
44.00	5981.0
44.90	388.0
49.00	1758.0
50.10	35544.0
51.10	137664.0
52.10	6781.0
52.90	446.0
55.10	1234.0
56.00	4147.0
57.10	10058.0
58.00	563.0
61.00	2080.0
62.00	2154.0
63.10	6157.0
64.10	627.0
65.10	3766.0
67.00	496.0
68.10	3232.0
69.00	162880.0
69.90	851.0
73.00	2185.0
74.00	15805.0
75.00	27032.0
76.10	9473.0
77.10	184832.0
78.10	11291.0
79.00	13097.0
80.00	9799.0
81.00	13947.0
82.00	3137.0
83.00	3168.0
83.90	866.0
85.00	2364.0
86.00	4067.0
87.00	1665.0
88.00	557.0
88.90	489.0
91.00	3267.0
92.00	2997.0
93.00	21168.0
94.00	1936.0
94.90	476.0
96.10	1214.0
97.10	591.0
98.00	17232.0
99.00	13755.0
100.00	1473.0
101.00	7634.0
101.90	469.0
103.00	2730.0
104.00	4482.0
105.00	4665.0
106.10	1924.0
107.00	58192.0
108.00	9388.0
109.10	1738.0
110.00	109352.0
111.00	15891.0
112.00	2263.0
113.10	616.0
114.90	580.0
116.00	3871.0
117.00	50480.0
118.00	3545.0
119.10	621.0
120.00	541.0
122.00	4311.0
123.00	6211.0
124.00	3057.0
125.10	2806.0
126.20	1537.0
127.00	222400.0
128.00	18368.0
129.00	87136.0
130.00	7202.0
131.00	1228.0
132.10	890.0
133.00	798.0
134.00	2551.0
135.00	7128.0
136.00	2848.0
137.00	3514.0
138.00	801.0
138.90	428.0
140.00	1210.0
141.00	11589.0

Instrument :
BNA_M
ClientSampleId :
DFTPP06

142.10	3963.0
143.00	2723.0
144.00	1181.0
145.10	537.0
145.90	2452.0
147.00	6964.0
148.00	14659.0
149.00	3359.0
150.00	823.0
151.10	1797.0
152.00	1157.0
153.00	3403.0
154.00	3149.0
155.00	6793.0
156.00	10587.0
157.00	2142.0
158.00	2692.0
159.00	1691.0
160.00	4079.0
161.00	6482.0
162.00	1634.0
163.00	746.0
163.80	461.0
165.00	5130.0
166.00	3928.0
167.00	25384.0
168.00	13364.0
169.00	2385.0
169.90	948.0
170.90	901.0
172.00	2620.0
173.00	3463.0
174.00	5945.0
175.10	10375.0
176.10	2643.0
177.00	4689.0
178.00	1714.0
179.00	20904.0
180.00	15144.0
181.00	6586.0
182.10	910.0
183.10	743.0
184.00	1603.0
185.00	10495.0
186.00	79112.0
187.00	22688.0
188.00	2304.0
189.00	5361.0
190.10	669.0
191.00	2902.0
192.00	6748.0
193.00	8739.0
194.00	1400.0
194.90	751.0
196.00	17992.0
197.10	4360.0
198.00	565952.0
198.90	35768.0
200.00	2723.0
201.40	3094.0
203.00	3876.0
204.00	21840.0
205.00	37808.0
206.00	154176.0
207.00	23528.0
208.10	5842.0
209.00	1827.0
210.20	2758.0
211.00	5980.0
213.10	410.0
214.90	1892.0
216.00	3367.0
217.00	40496.0
218.00	4976.0
219.10	739.0
221.00	27256.0
221.90	5764.0
223.00	9721.0
224.00	88712.0
225.00	21976.0
226.10	2769.0
227.00	37104.0
228.10	4859.0
229.00	8230.0
229.90	922.0
231.00	3411.0
231.90	705.0
233.00	683.0
234.00	2439.0
235.00	2932.0
236.00	1871.0
237.00	3160.0
238.10	498.0
239.00	1416.0
240.00	1331.0
241.00	2147.0

Instrument :
BNA_M
ClientSampleId :
DFTPP06

242.00	4629.0
243.00	5071.0
244.00	73936.0
245.00	9745.0
246.00	15211.0
246.90	2960.0
247.90	626.0
249.00	2991.0
249.90	642.0
251.00	684.0
251.90	613.0
253.10	1682.0
254.10	3884.0
255.00	416704.0
256.00	56352.0
257.00	4330.0
258.00	22856.0
259.00	3665.0
260.00	722.0
260.90	566.0
263.00	327.0
264.10	650.0
265.10	9199.0
266.00	1532.0
266.90	371.0
270.10	345.0
270.90	1088.0
272.10	1146.0
273.00	13527.0
274.00	31336.0
275.00	196992.0
276.00	25488.0
277.00	16137.0
278.00	2915.0
279.00	719.0
281.10	1198.0
282.10	636.0
283.00	2190.0
284.00	1448.0
285.00	3411.0
286.00	573.0
289.00	607.0
290.00	560.0
291.00	533.0
291.90	752.0
293.00	4095.0
293.90	730.0
294.90	901.0
296.00	58216.0
297.00	7750.0
298.00	552.0
301.00	582.0
302.00	898.0
303.00	7219.0
304.00	1765.0
304.90	341.0
308.00	986.0
309.00	486.0
310.10	559.0
312.90	677.0
314.00	3006.0
315.00	6793.0
316.00	3907.0
317.10	754.0
321.00	1846.0
322.00	1158.0
323.10	19712.0
324.10	3164.0
325.20	345.0
326.20	336.0
327.00	4320.0
328.00	1793.0
329.00	380.0
332.00	1084.0
333.10	1947.0
334.00	12565.0
335.00	3626.0
335.90	786.0
339.00	371.0
341.00	2299.0
341.90	571.0
346.00	4561.0
347.00	629.0
351.00	425.0
352.00	6576.0
353.00	3738.0
354.10	6732.0
355.10	1701.0
359.10	440.0
365.00	30568.0
366.00	3755.0
369.90	503.0
370.90	1830.0
372.10	10836.0
373.00	2845.0
374.00	378.0

Instrument :
BNA_M
ClientSampleId :
DFTPP06

376.90	478.0
382.90	2462.0
384.00	819.0
390.10	1539.0
391.10	1173.0
392.10	821.0
400.90	680.0
402.00	5129.0
403.10	7138.0
404.00	2087.0
405.00	328.0
415.20	422.0
421.00	6006.0
422.00	5698.0
423.10	37904.0
424.10	8579.0
425.00	750.0
440.20	614.0
441.10	108248.0
442.10	711296.0
443.10	129504.0
444.10	11141.0
445.10	750.0

Instrument :
BNA_M
ClientSampleId :
DFTPP06