

Data Path : Z:\svoasrv\HPCHEM1\BNA_M\Data\BM061219\
 Data File : BM020916.D
 Acq On : 12 Jun 2019 22:44
 Operator : HP/JU
 Sample : K3215-10
 Misc :
 ALS Vial : 21 Sample Multiplier: 1

Instrument :
 BNA_M
 ClientSampleId :
 DB8J4

Manual Integrations
 APPROVED

mohammad
 6/17/2019 8:27:53 AM

Quant Time: Jun 17 02:09:51 2019
 Quant Method : Z:\SVOASRV\HPCHEM1\BNA_M\METHODS\SOM-EPA-BM060619MA.M
 Quant Title : SVOA CALIBRATION
 QLast Update : Thu Jun 13 01:55:55 2019
 Response via : Initial Calibration

Internal Standards	R.T.	QIon	Response	Conc	Units	Dev(Min)
1) 1,4-Dichlorobenzene-d4	7.81	152	309325	20.00	ng/ul	0.00
18) Naphthalene-d8	10.60	136	1186430	20.00	ng/ul	0.00
35) Acenaphthene-d10	14.44	164	741545	20.00	ng/ul	0.00
61) Phenanthrene-d10	17.20	188	1502286	20.00	ng/ul	0.00
77) Chrysene-d12	21.37	240	1335382	20.00	ng/ul	0.00
85) Perylene-d12	23.65	264	1544963	20.00	ng/ul	0.00

System Monitoring Compounds

3) 1,4-Dioxane-d8	3.30	96	11145	1.72	ng/uL	0.00
5) Phenol-d5	7.06	99	192674m	8.14	ng/ul	0.08
7) Bis-(2-Chloroethyl)ether-d	7.15	67	376704	26.55	ng/ul	0.00
9) 2-Chlorophenol-d4	7.37	132	474277	25.16	ng/ul	0.04
13) 4-Methylphenol-d8	8.56	113	309147m	16.24	ng/ul	0.05
19) Nitrobenzene-d5	8.97	128	271776	33.56	ng/ul	0.00
22) 2-Nitrophenol-d4	9.69	143	303958	36.46	ng/ul	0.00
26) 2,4-Dichlorophenol-d3	10.25	165	565316	32.51	ng/ul	0.03
29) 4-Chloroaniline-d4	10.78	131	9871m	0.47	ng/ul	0.04
43) Dimethylphthalate-d6	13.87	166	1652423	30.12	ng/ul	0.01
46) Acenaphthylene-d8	14.14	160	2055563	29.56	ng/ul	0.00
51) 4-Nitrophenol-d4	14.70	143	97605m	10.37	ng/ul	0.06
57) Fluorene-d10	15.44	176	1423372	30.54	ng/ul	0.00
62) 4,6-Dinitro-2-methylphenol	15.58	200	145796m	18.98	ng/ul	0.02
70) Anthracene-d10	17.30	188	2090113	31.85	ng/ul	0.00
78) Pyrene-d10	19.59	212	2150068	33.31	ng/ul	0.00
89) Benzo(a)pyrene-d12	23.50	264	2427043	34.56	ng/ul	0.00

Target Compounds

Target Compounds	R.T.	QIon	Response	Conc	Units	Qvalue
6) Phenol	7.09	94	557453m	22.881	ng/ul	
21) Isophorone	9.55	82	4556643	120.964	ng/ul#	94
28) Naphthalene	10.65	128	828732	14.872	ng/ul	98
34) 2-Methylnaphthalene	12.26	142	269908	6.595	ng/ul	90
38) 2,4,6-Trichlorophenol	12.90	196	43276	2.999	ng/ul	97
39) 2,4,5-Trichlorophenol	12.99	196	375828m	23.977	ng/ul	
40) 1,1'-Biphenyl	13.28	154	60777	1.056	ng/ul#	59
55) 2,3,4,6-Tetrachlorophenol	15.10	232	2550781	193.677	ng/ul	90
68) Pentachlorophenol	16.88	266	19875849	1893.770	ng/ul	97
73) Pentachlorobenzene	14.76	250	26660	1.271	ng/uL	97

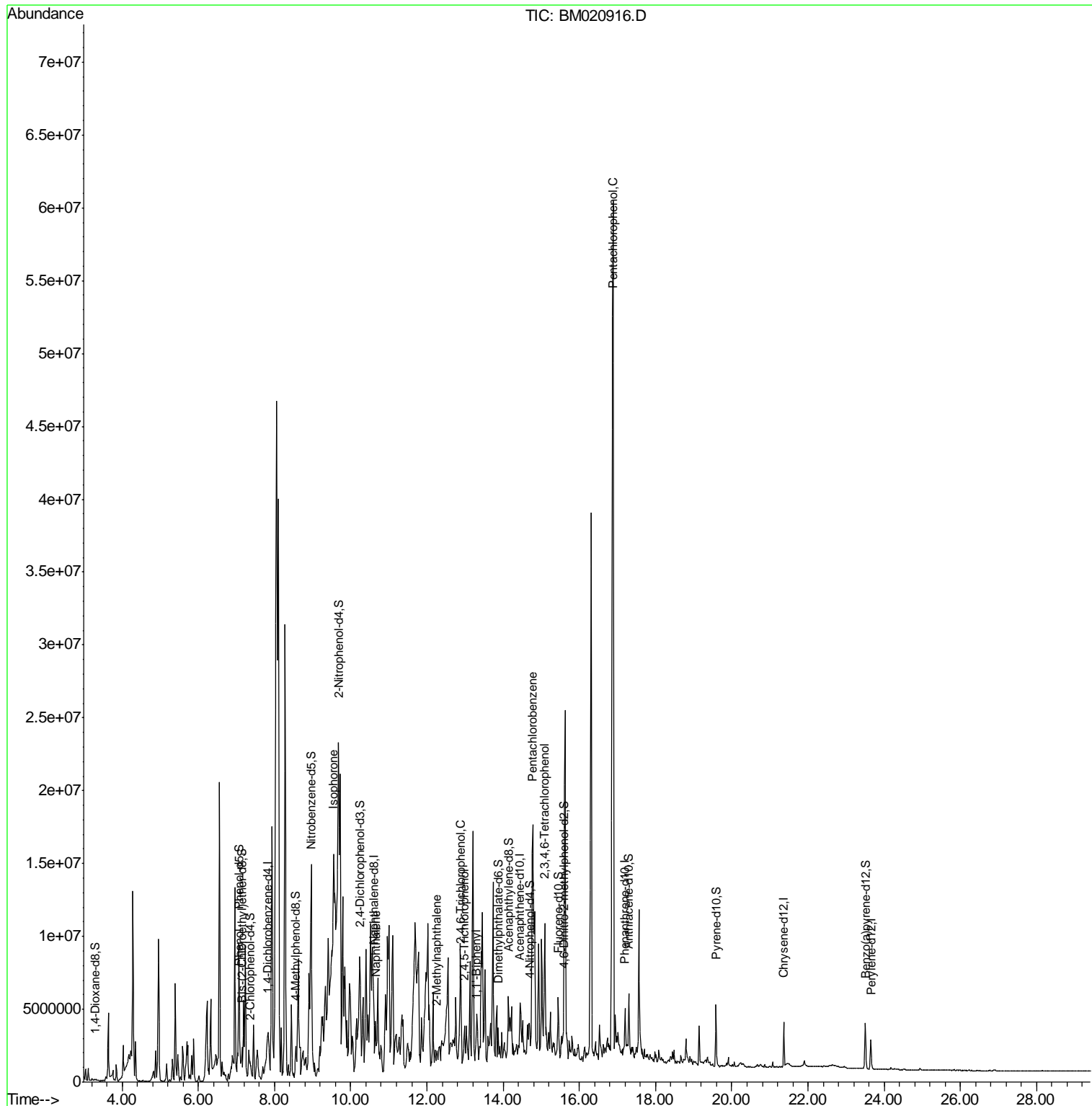
(#) = qualifier out of range (m) = manual integration (+) = signals summed

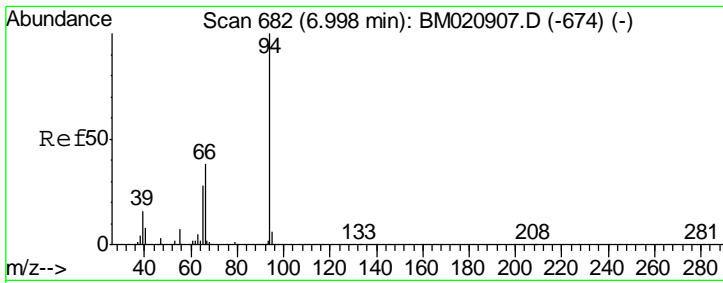
Data Path : Z:\svoasrv\HPCHEM1\BNA_M\Data\BM061219\
 Data File : BM020916.D
 Acq On : 12 Jun 2019 22:44
 Operator : HP/JU
 Sample : K3215-10
 Misc :
 ALS Vial : 21 Sample Multiplier: 1

Instrument :
 BNA_M
 ClientSampled :
 DB8J4

Manual Integrations
 APPROVED
 mohammad
 6/17/2019 8:27:53 AM

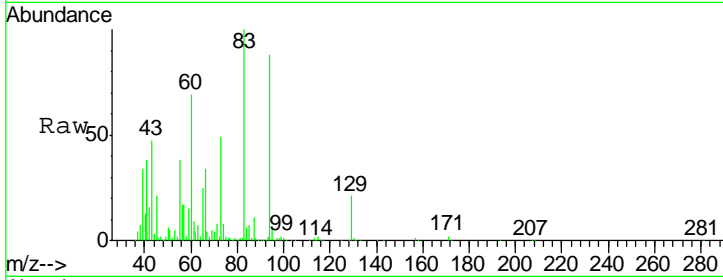
Quant Time: Jun 17 02:09:51 2019
 Quant Method : Z:\SVOASRV\HPCHEM1\BNA_M\METHODS\SOM-EPA-BM060619MA.M
 Quant Title : SVOA CALIBRATION
 QLast Update : Thu Jun 13 01:55:55 2019
 Response via : Initial Calibration





#6
 Phenol
 Concen: 22.881 ng/ul m
 RT: 7.09 min Scan# 697
 Delta R.T. 0.09 min
 Lab File: BM020916.D
 Acq: 12 Jun 2019 22:44

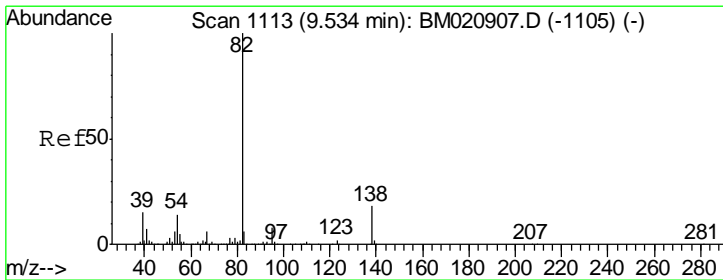
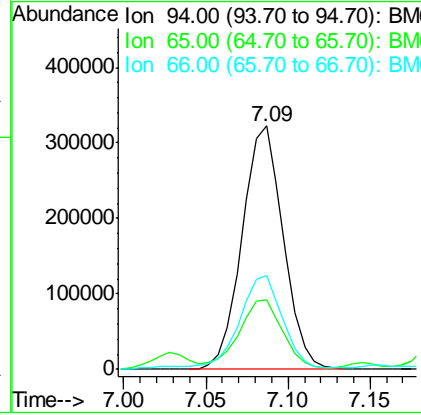
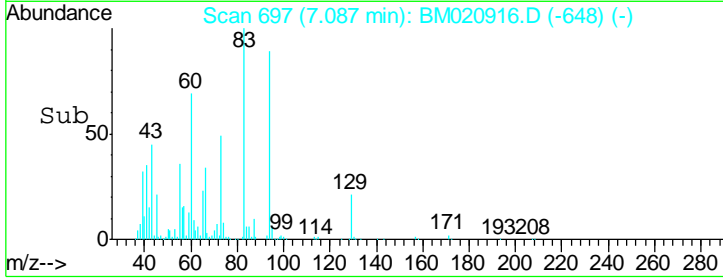
Instrument :
 BNA_M
ClientSampled :
 DB8J4



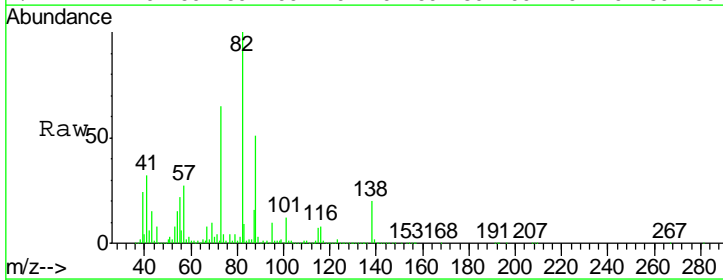
Tgt Ion	Resp	Lower	Upper
94	100		
65	28.4	23.3	34.9
66	38.6	32.1	48.1

Manual Integrations
APPROVED

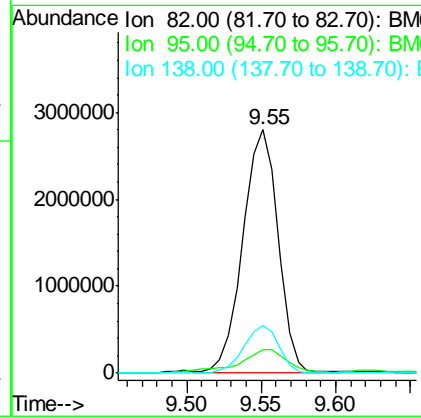
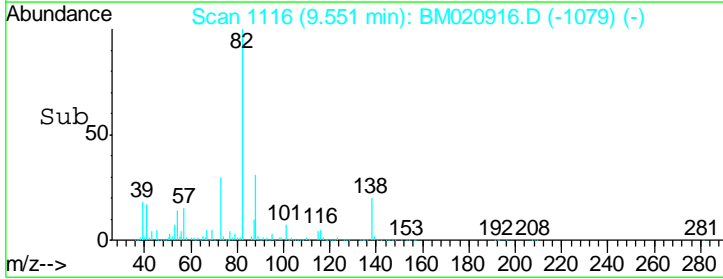
mohammad
 6/17/2019 8:27:53 AM

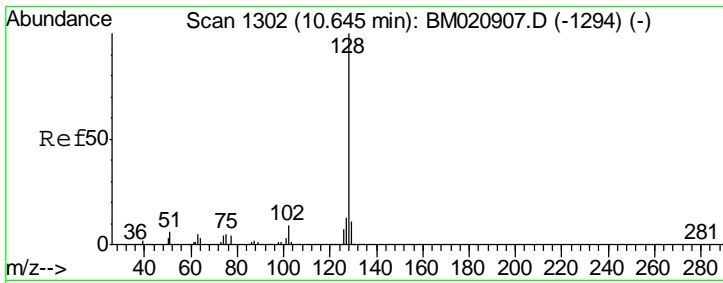


#21
 Isophorone
 Concen: 120.964 ng/ul
 RT: 9.55 min Scan# 1116
 Delta R.T. 0.02 min
 Lab File: BM020916.D
 Acq: 12 Jun 2019 22:44



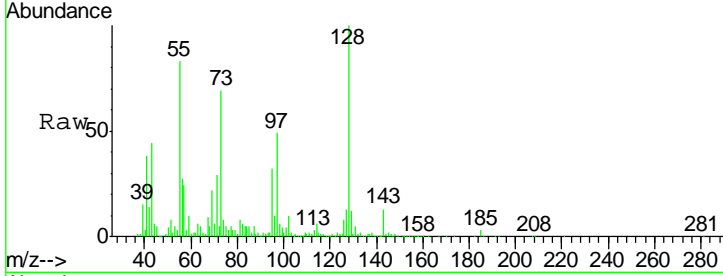
Tgt Ion	Resp	Lower	Upper
82	100		
95	9.6	5.9	8.9#
138	19.8	13.8	20.8





#28
 Naphthalene
 Concen: 14.872 ng/ul
 RT: 10.65 min Scan# 1303
 Delta R.T. 0.00 min
 Lab File: BM020916.D
 Acq: 12 Jun 2019 22:44

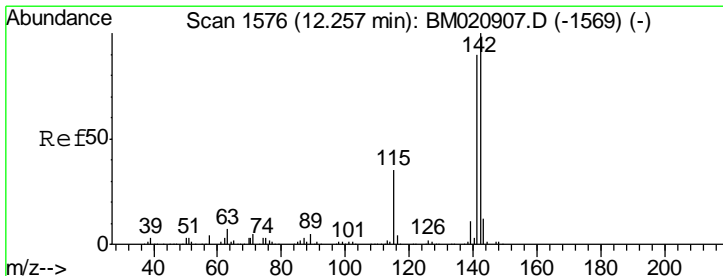
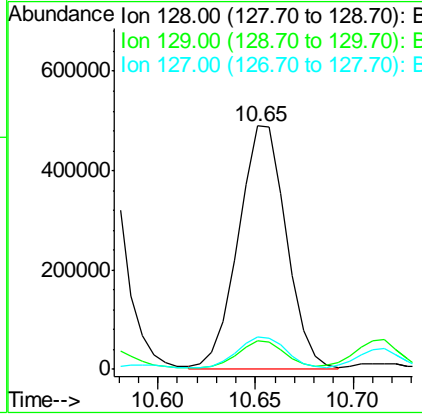
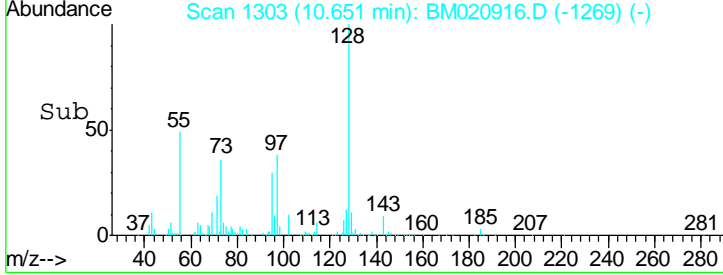
Instrument :
 BNA_M
 ClientSampled :
 DB8J4



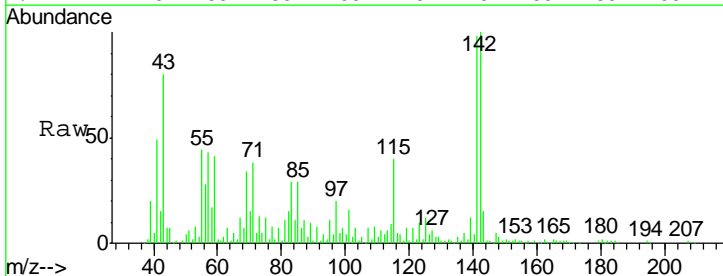
Tgt Ion:128 Resp: 828732

Ion	Ratio	Lower	Upper
128	100		
129	11.9	8.6	13.0
127	13.3	10.2	15.2

Manual Integrations
APPROVED
 mohammad
 6/17/2019 8:27:53 AM

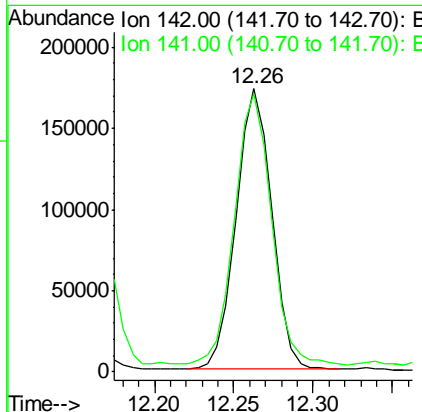
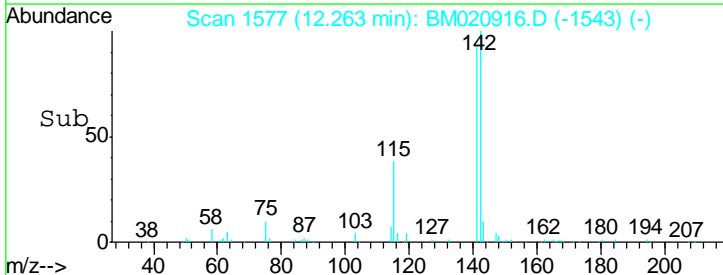


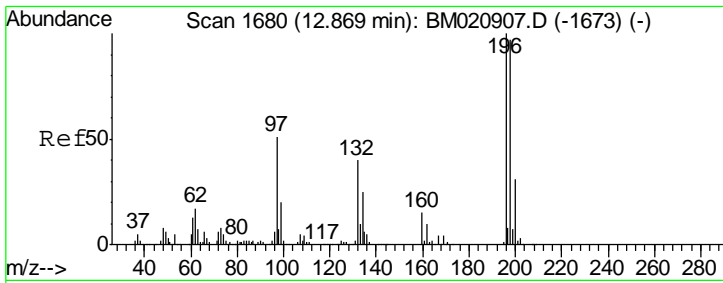
#34
 2-Methylnaphthalene
 Concen: 6.595 ng/ul
 RT: 12.26 min Scan# 1577
 Delta R.T. 0.00 min
 Lab File: BM020916.D
 Acq: 12 Jun 2019 22:44



Tgt Ion:142 Resp: 269908

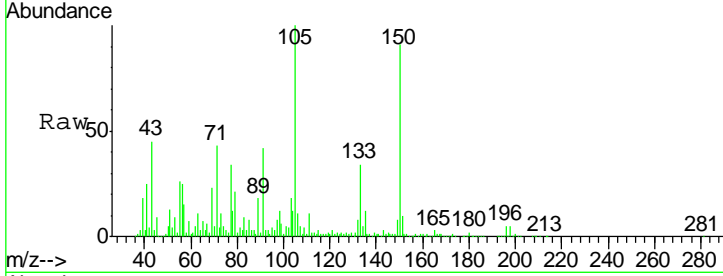
Ion	Ratio	Lower	Upper
142	100		
141	98.2	71.4	107.0





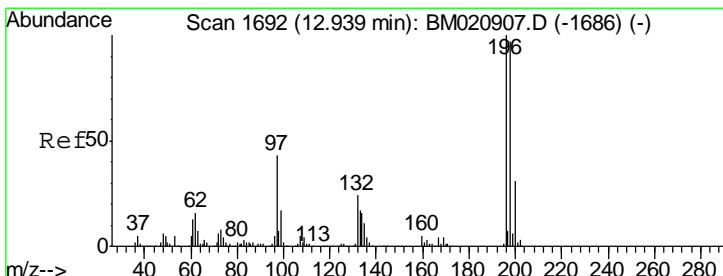
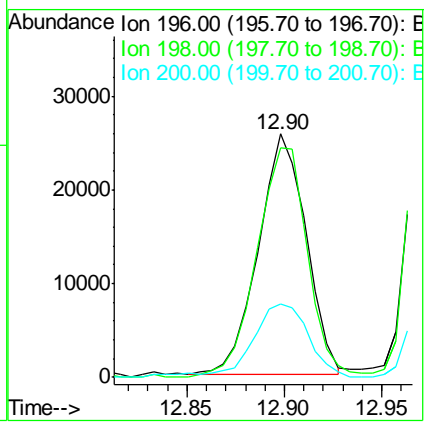
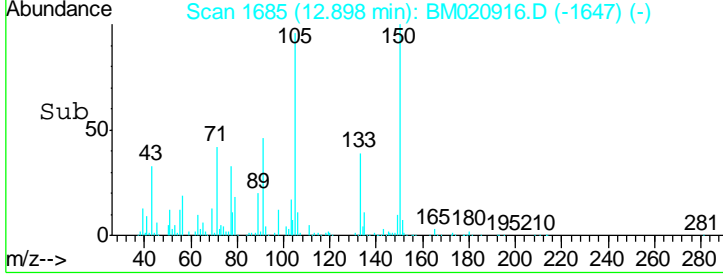
#38
 2,4,6-Trichlorophenol
 Concen: 2.999 ng/ul
 RT: 12.90 min Scan# 1685
 Delta R.T. 0.02 min
 Lab File: BM020916.D
 Acq: 12 Jun 2019 22:44

Instrument :
 BNA_M
ClientSampled :
 DB8J4

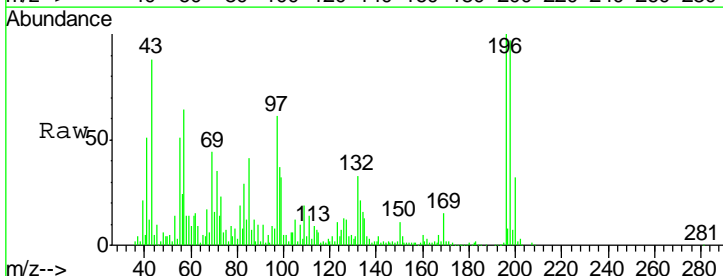


Tgt Ion	Resp	Lower	Upper
196	43276		
196	100		
198	94.4	77.8	116.6
200	29.9	25.3	37.9

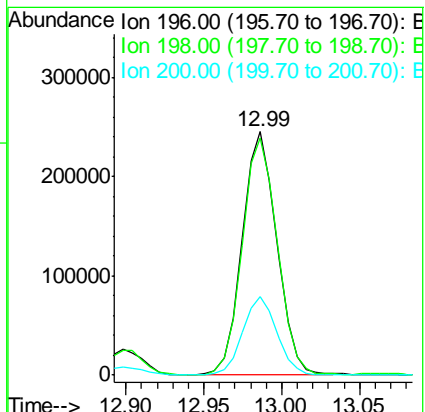
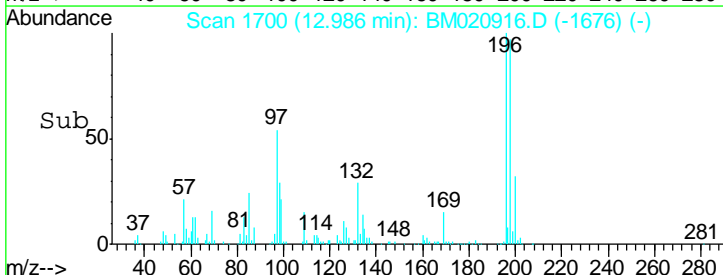
Manual Integrations
APPROVED
 mohammad
 6/17/2019 8:27:53 AM

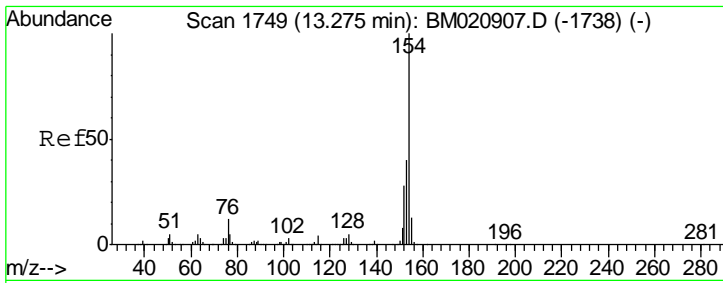


#39
 2,4,5-Trichlorophenol
 Concen: 23.977 ng/ul m
 RT: 12.99 min Scan# 1700
 Delta R.T. 0.04 min
 Lab File: BM020916.D
 Acq: 12 Jun 2019 22:44



Tgt Ion	Resp	Lower	Upper
196	375828		
196	100		
198	97.3	75.3	112.9
200	32.1	25.0	37.4





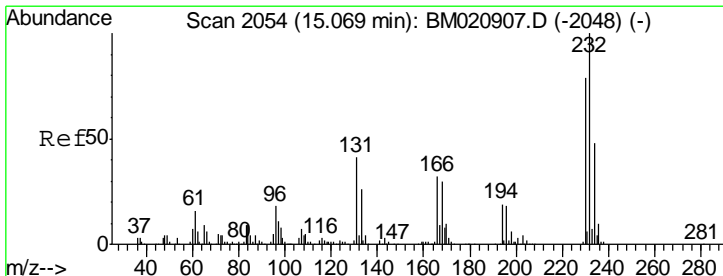
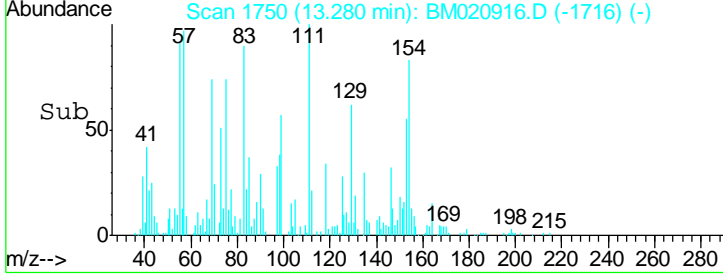
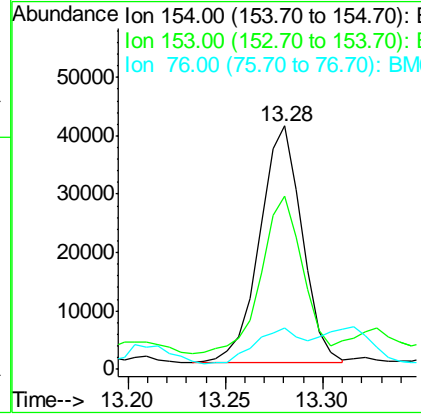
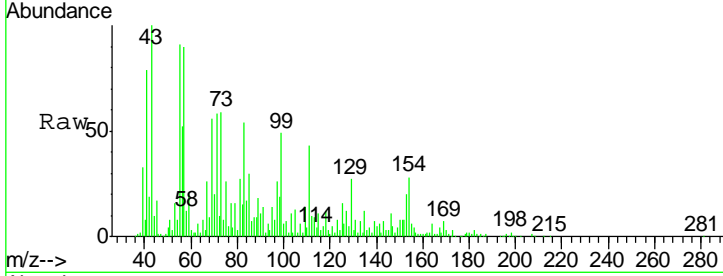
#40
 1,1'-Biphenyl
 Concen: 1.056 ng/ul
 RT: 13.28 min Scan# 1750
 Delta R.T. 0.00 min
 Lab File: BM020916.D
 Acq: 12 Jun 2019 22:44

Instrument :
 BNA_M
ClientSampled :
 DB8J4

Tgt Ion	Resp	Lower	Upper
154	100		
153	71.2	32.4	48.6#
76	17.0	9.8	14.6#

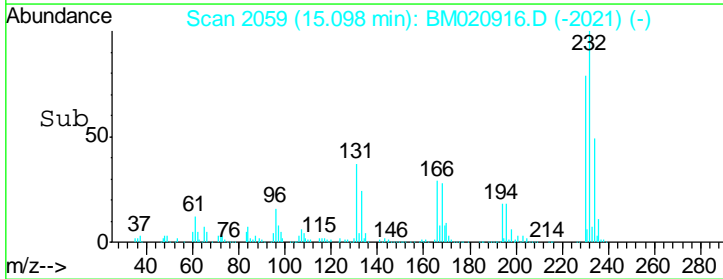
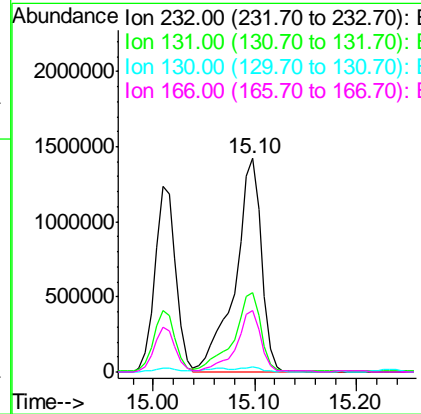
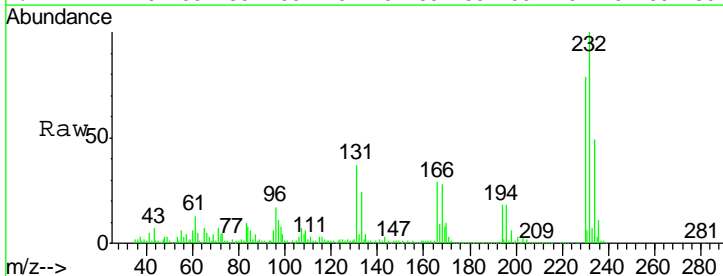
Manual Integrations
APPROVED

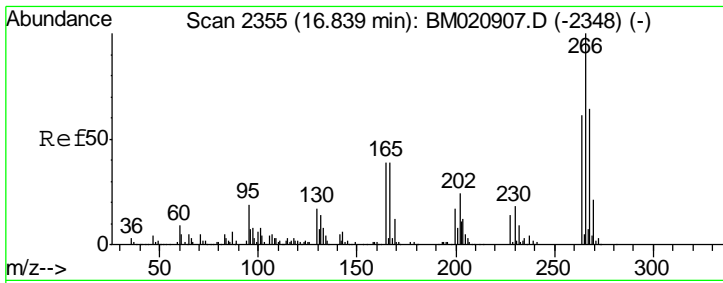
mohammad
 6/17/2019 8:27:53 AM



#55
 2,3,4,6-Tetrachlorophenol
 Concen: 193.677 ng/ul
 RT: 15.10 min Scan# 2059
 Delta R.T. 0.02 min
 Lab File: BM020916.D
 Acq: 12 Jun 2019 22:44

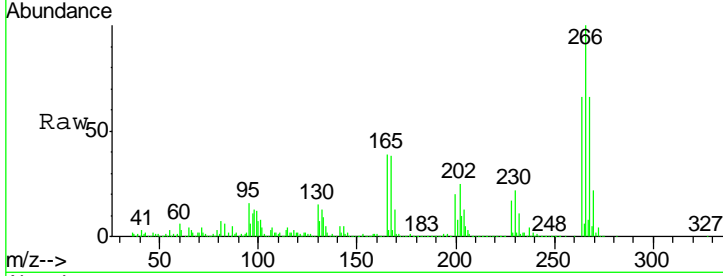
Tgt Ion	Resp	Lower	Upper
232	100		
131	37.4	36.3	54.5
130	2.1	1.9	2.9
166	28.6	26.4	39.6





#68
 Pentachlorophenol
 Concen: 1893.770 ng/uL
 RT: 16.88 min Scan# 2362
 Delta R.T. 0.04 min
 Lab File: BM020916.D
 Acq: 12 Jun 2019 22:44

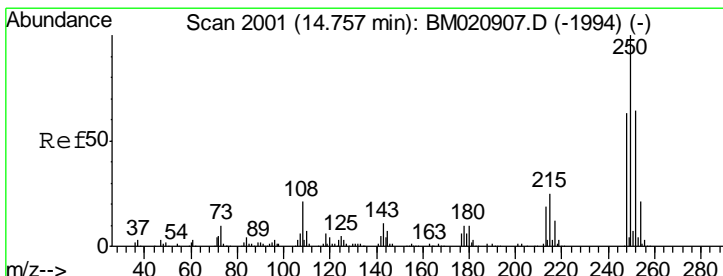
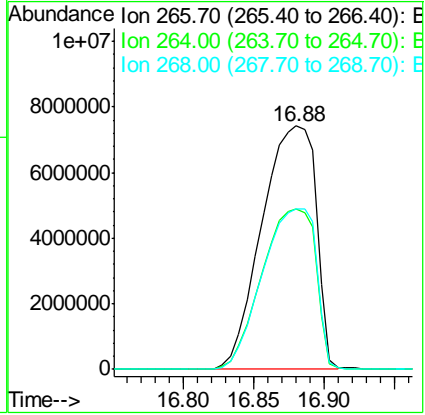
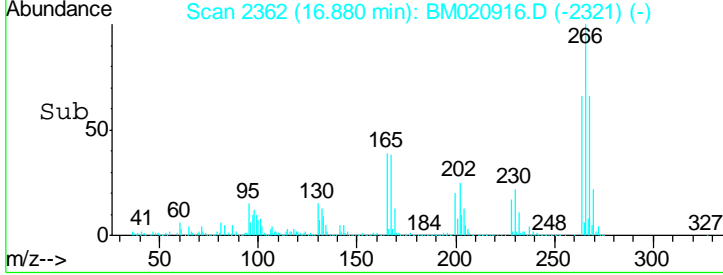
Instrument :
 BNA_M
ClientSampled :
 DB8J4



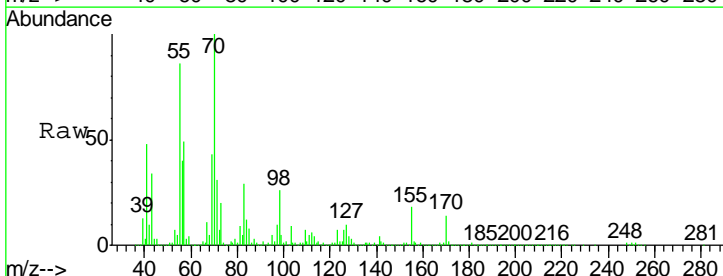
Tgt Ion: 266 Resp: 19875849

Ion	Ratio	Lower	Upper
266	100		
264	66.1	50.3	75.5
268	66.1	51.2	76.8

Manual Integrations
APPROVED
 mohammad
 6/17/2019 8:27:53 AM



#73
 Pentachlorobenzene
 Concen: 1.271 ng/uL
 RT: 14.76 min Scan# 2002
 Delta R.T. 0.00 min
 Lab File: BM020916.D
 Acq: 12 Jun 2019 22:44



Tgt Ion: 250 Resp: 26660

Ion	Ratio	Lower	Upper
250	100		
248	60.2	49.7	74.5
252	59.6	49.9	74.9

