

Data Path : Z:\SVOASRV\HPCHEM1\BNA M\DATA\BM061719\
 Data File : BM020976.D
 Acq On : 17 Jun 2019 13:23
 Operator : HP/JU
 Sample : K3231-12
 Misc :
 ALS Vial : 8 Sample Multiplier: 1

Instrument :
 BNA_M
 ClientSampleId :

Quant Time: Jun 18 01:35:08 2019
 Quant Method : Z:\SVOASRV\HPCHEM1\BNA_M\METHODS\SOM-EPA-BM061419MA.M
 Quant Title : SVOA CALIBRATION
 QLast Update : Mon Jun 17 09:33:39 2019
 Response via : Initial Calibration

Internal Standards	R.T.	QIon	Response	Conc	Units	Dev(Min)
1) 1,4-Dichlorobenzene-d4	7.79	152	280753	20.00	ng/ul	0.00
18) Naphthalene-d8	10.58	136	1275201	20.00	ng/ul	0.00
35) Acenaphthene-d10	14.43	164	820900	20.00	ng/ul	0.00
61) Phenanthrene-d10	17.18	188	1863907	20.00	ng/ul	0.00
77) Chrysene-d12	21.36	240	1575907	20.00	ng/ul	0.00
85) Perylene-d12	23.63	264	1692052	20.00	ng/ul	-0.01

System Monitoring Compounds

3) 1,4-Dioxane-d8	3.30	96	12814	2.17	ng/uL	0.00
5) Phenol-d5	6.96	99	290018	11.87	ng/ul	0.00
7) Bis-(2-Chloroethyl)ether-d	7.13	67	204684	14.06	ng/ul	0.00
9) 2-Chlorophenol-d4	7.32	132	250675	12.62	ng/ul	0.00
13) 4-Methylphenol-d8	8.49	113	220727	10.82	ng/ul	0.00
19) Nitrobenzene-d5	8.95	128	137900	13.32	ng/ul	0.00
22) 2-Nitrophenol-d4	9.67	143	148775	12.94	ng/ul	0.00
26) 2,4-Dichlorophenol-d3	10.20	165	285443	12.21	ng/ul	0.00
29) 4-Chloroaniline-d4	10.74	131	6483	0.27	ng/ul	0.01
43) Dimethylphthalate-d6	13.84	166	1079794	14.56	ng/ul	0.00
46) Acenaphthylene-d8	14.12	160	1173322	12.92	ng/ul	0.00
51) 4-Nitrophenol-d4	14.63	143	113216	9.38	ng/ul	0.00
57) Fluorene-d10	15.43	176	909987	14.10	ng/ul	0.00
62) 4,6-Dinitro-2-methylphenol	15.55	200	108894	9.50	ng/ul	0.00
70) Anthracene-d10	17.27	188	1344898	13.88	ng/ul	0.00
78) Pyrene-d10	19.57	212	1389476	14.69	ng/ul	0.00
89) Benzo(a)pyrene-d12	23.49	264	1217380	12.19	ng/ul	-0.01

Target Compounds

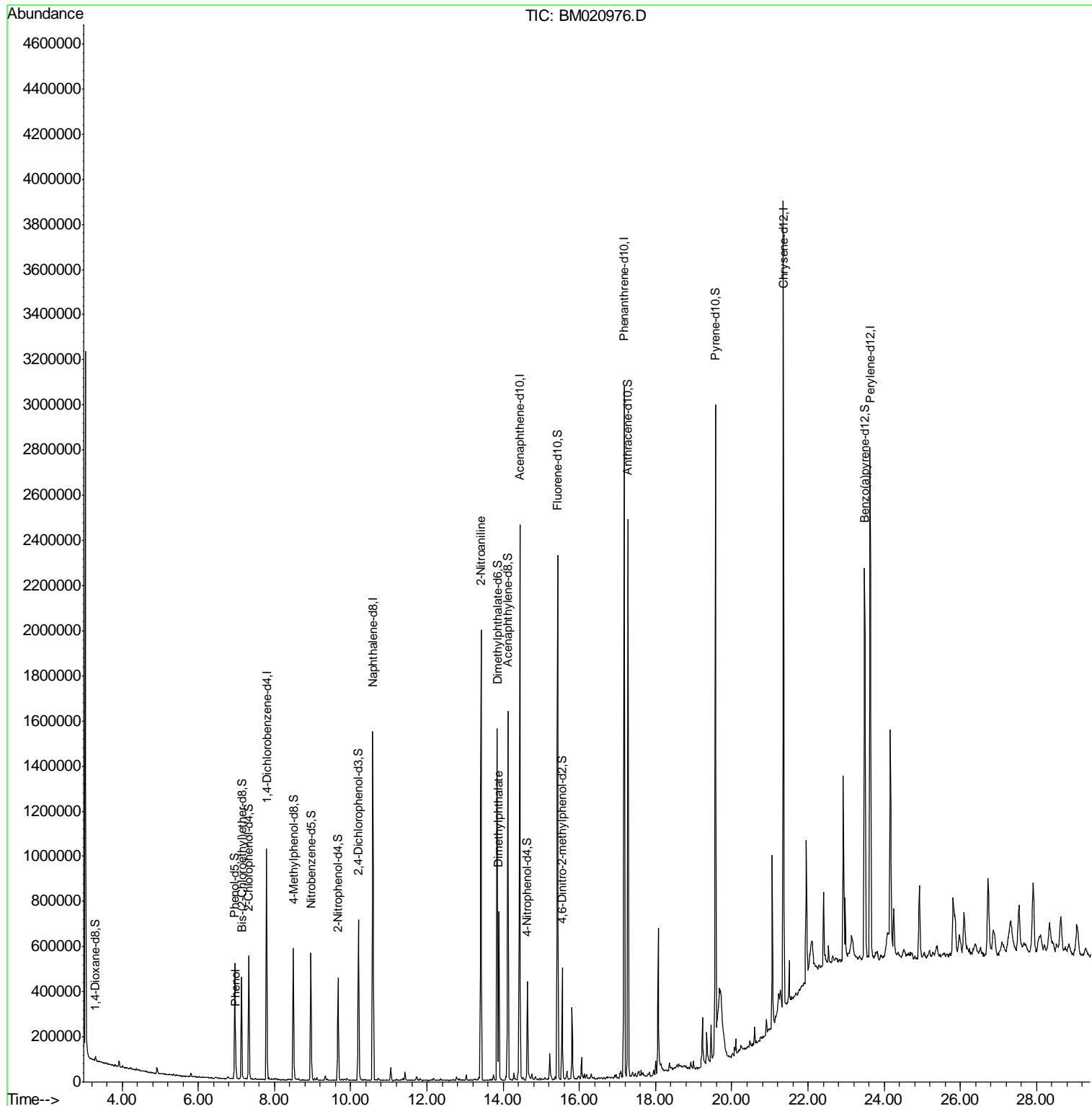
					Ovalue
6) Phenol	6.99	94	42838	1.853	ng/ul 96
42) 2-Nitroaniline	13.42	65	26969	2.074	ng/ul# 37
44) Dimethylphthalate	13.89	163	498768	7.387	ng/ul 99

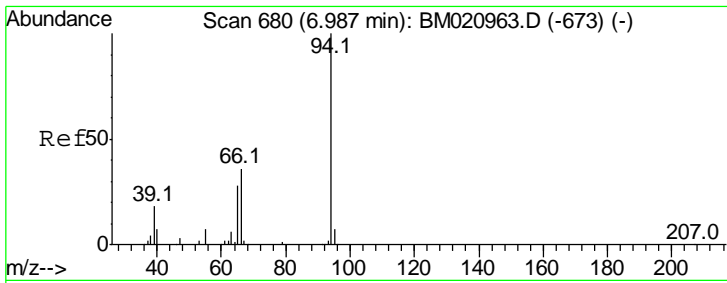
(#) = qualifier out of range (m) = manual integration (+) = signals summed

Data Path : Z:\SVOASRV\HPCHEM1\BNA M\DATA\BM061719\
 Data File : BM020976.D
 Acq On : 17 Jun 2019 13:23
 Operator : HP/JU
 Sample : K3231-12
 Misc :
 ALS Vial : 8 Sample Multiplier: 1

Instrument :
 BNA_M
 ClientSampled :

Quant Time: Jun 18 01:35:08 2019
 Quant Method : Z:\SVOASRV\HPCHEM1\BNA_M\METHODS\SOM-EPA-BM061419MA.M
 Quant Title : SVOA CALIBRATION
 QLast Update : Mon Jun 17 09:33:39 2019
 Response via : Initial Calibration

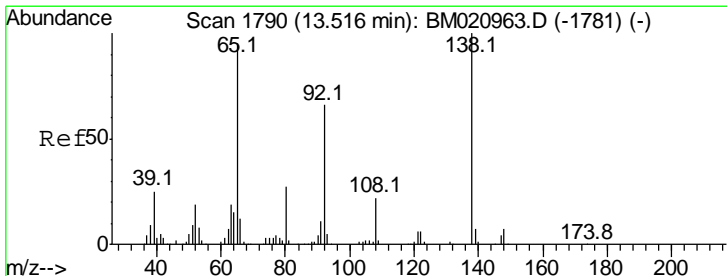
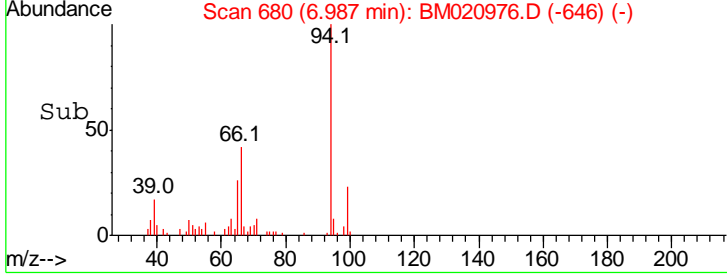
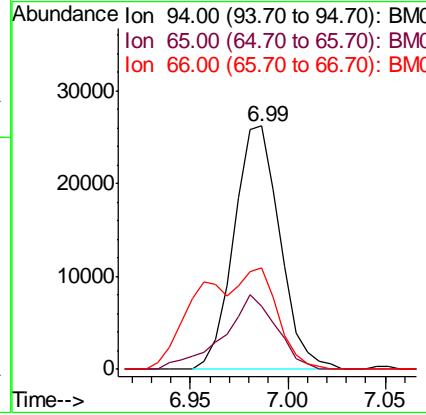
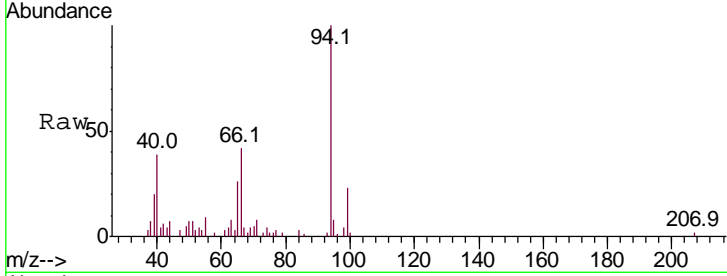




#6
 Phenol
 Concen: 1.853 ng/ul
 RT: 6.99 min Scan# 680
 Delta R.T. -0.00 min
 Lab File: BM020976.D
 Acq: 17 Jun 2019 13:23

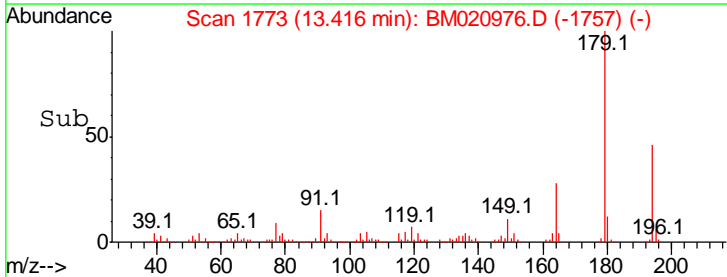
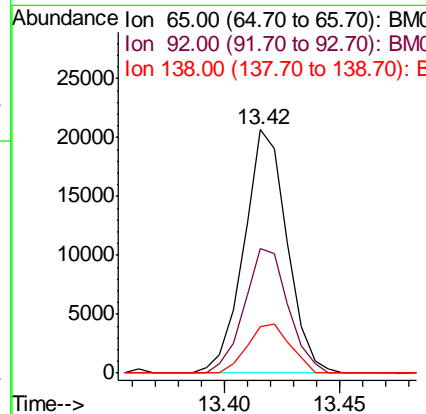
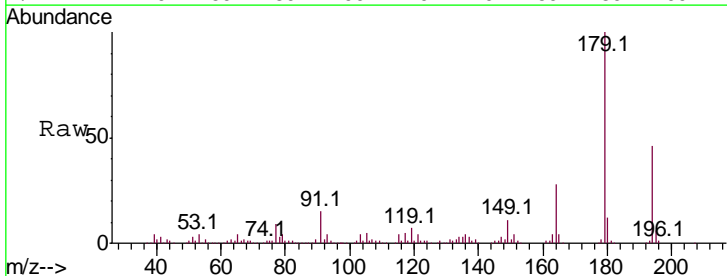
Instrument :
 BNA_M
 ClientSampled :

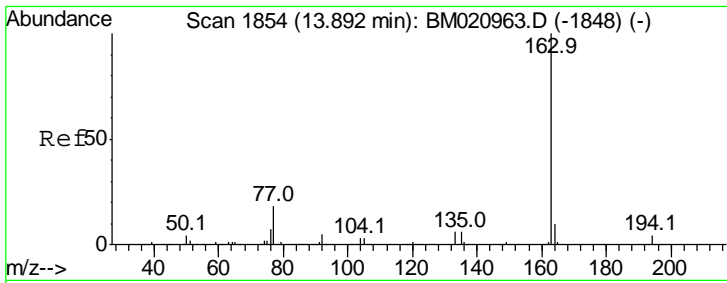
Tgt Ion	Resp	Lower	Upper
94	100		
65	26.1	22.6	34.0
66	41.6	31.2	46.8



#42
 2-Nitroaniline
 Concen: 2.074 ng/ul
 RT: 13.42 min Scan# 1773
 Delta R.T. -0.11 min
 Lab File: BM020976.D
 Acq: 17 Jun 2019 13:23

Tgt Ion	Resp	Lower	Upper
65	100		
92	51.0	57.8	86.8#
138	19.1	89.1	133.7#





#44
 Dimethylphthalate
 Concen: 7.387 ng/ul
 RT: 13.89 min Scan# 1854
 Delta R.T. -0.01 min
 Lab File: BM020976.D
 Acq: 17 Jun 2019 13:23

Instrument :
 BNA_M
 ClientSampled :

Tot Ion:163 Resp: 498768

Ion	Ratio	Lower	Upper
163	100		
194	4.4	3.4	5.2
164	10.2	7.7	11.5

