

Data Path : Z:\SVOASRV\HPCHEM1\BNA M\DATA\BM061818\  
 Data File : BM015712.D  
 Acq On : 19 Jun 2018 04:03  
 Operator : SJ/JU  
 Sample : J3527-09 10X  
 Misc :  
 ALS Vial : 19 Sample Multiplier: 1

**Instrument :**  
 BNA\_M  
**ClientSampled :**  
 DAXQ4

**Manual Integrations**  
**APPROVED**  
 Sohil  
 6/19/2018 6:02:52 PM

Quant Time: Jun 19 05:24:16 2018  
 Quant Method : Z:\SVOASRV\HPCHEM1\BNA\_M\METHODS\SOM-EPA-BM060818MA.M  
 Quant Title : SVOA CALIBRATION  
 QLast Update : Tue Jun 19 05:11:15 2018  
 Response via : Initial Calibration

Internal Standards	R.T.	QIon	Response	Conc	Units	Dev(Min)
1) 1,4-Dichlorobenzene-d4	8.32	152	88566	20.00	ng/ul	0.00
18) Naphthalene-d8	11.15	136	381483	20.00	ng/ul	0.00
35) Acenaphthene-d10	14.94	164	219850	20.00	ng/ul	0.00
61) Phenanthrene-d10	17.66	188	523451	20.00	ng/ul	0.00
77) Chrysene-d12	21.77	240	658195	20.00	ng/ul	0.00
85) Perylene-d12	24.19	264	768962	20.00	ng/ul	0.00

System Monitoring Compounds

3) 1,4-Dioxane-d8	3.54	96	826	0.45	ng/uL	0.00
5) Phenol-d5	7.49	99	2892	0.36	ng/ul	0.02
7) Bis-(2-Chloroethyl)ether-d	7.65	67	4273	0.88	ng/ul	0.01
9) 2-Chlorophenol-d4	7.86	132	4811	0.78	ng/ul	0.01
13) 4-Methylphenol-d8	9.06	113	3757	0.54	ng/ul	0.02
19) Nitrobenzene-d5	9.53	128	1983m	0.77	ng/ul	0.02
22) 2-Nitrophenol-d4	10.25	143	1720	0.62	ng/ul	0.01
26) 2,4-Dichlorophenol-d3	10.80	165	4448	0.78	ng/ul	0.02
29) 4-Chloroaniline-d4	11.16	131	254	0.04	ng/ul	-0.14
43) Dimethylphthalate-d6	14.34	166	20385	1.12	ng/ul	0.00
46) Acenaphthylene-d8	14.64	160	18735	0.95	ng/ul	0.00
51) 4-Nitrophenol-d4	0.00	143	0	0.00	ng/ul	
57) Fluorene-d10	15.93	176	18248	1.18	ng/ul	0.00
62) 4,6-Dinitro-2-methylphenol	16.07	200	1085	0.34	ng/ul	0.02
70) Anthracene-d10	17.77	188	28929	1.21	ng/ul	0.00
78) Pyrene-d10	20.02	212	34210	1.21	ng/ul	0.00
89) Benzo(a)pyrene-d12	24.03	264	47229	1.23	ng/ul	0.00

Target Compounds

					Ovalue
44) Dimethylphthalate	14.39	163	27287	1.468	ng/ul 99

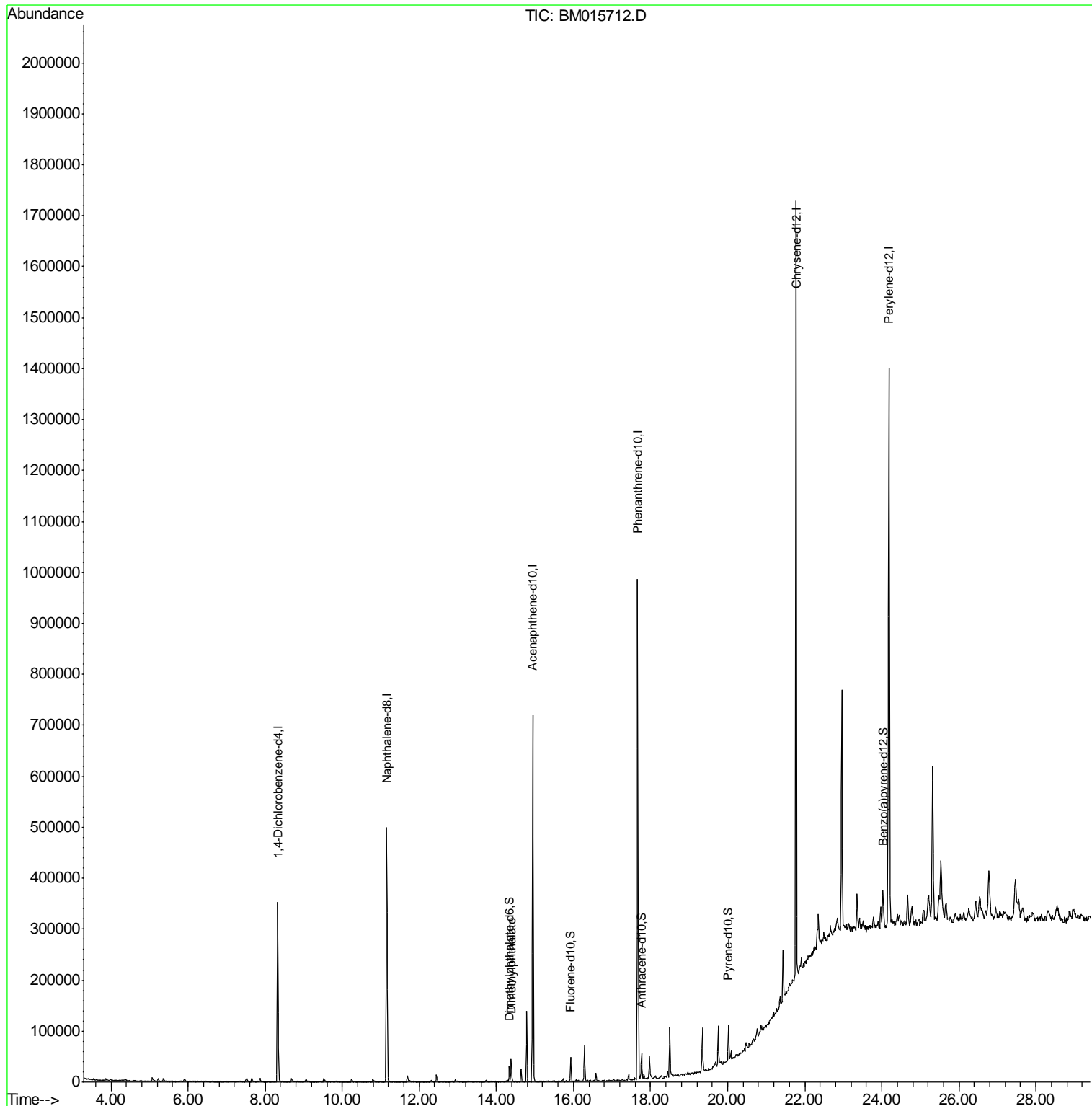
(#) = qualifier out of range (m) = manual integration (+) = signals summed

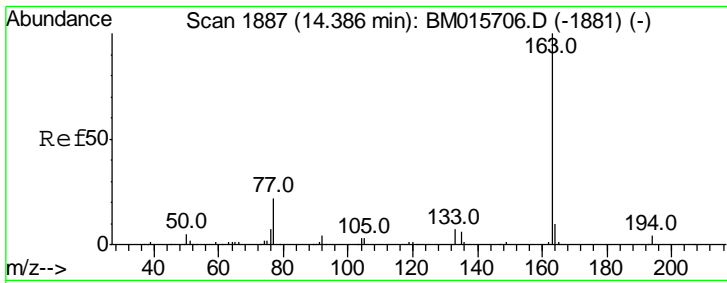
Data Path : Z:\SVOASRV\HPCHEM1\BNA M\DATA\BM061818\  
 Data File : BM015712.D  
 Acq On : 19 Jun 2018 04:03  
 Operator : SJ/JU  
 Sample : J3527-09 10X  
 Misc :  
 ALS Vial : 19 Sample Multiplier: 1

**Instrument :**  
 BNA\_M  
**Client Sampled :**  
 DAXQ4

**Manual Integrations**  
**APPROVED**  
 Sohil  
 6/19/2018 6:02:52 PM

Quant Time: Jun 19 05:24:16 2018  
 Quant Method : Z:\SVOASRV\HPCHEM1\BNA\_M\METHODS\SOM-EPA-BM060818MA.M  
 Quant Title : SVOA CALIBRATION  
 QLast Update : Tue Jun 19 05:11:15 2018  
 Response via : Initial Calibration





#44  
 Dimethylphthalate  
 Concen: 1.468 ng/ul  
 RT: 14.39 min Scan# 1887  
 Delta R.T. -0.00 min  
 Lab File: BM015712.D  
 Acq: 19 Jun 2018 04:03

**Instrument :**  
 BNA\_M  
**ClientSampled :**  
 DAXQ4

Tot Ion	Ratio	Lower	Upper
163	100		
194	4.6	3.2	4.8
164	10.0	7.8	11.8

**Manual Integrations**  
**APPROVED**

Sohil  
 6/19/2018 6:02:52 PM

