

Data Path : Z:\svoasrv\HPCHEM1\BNA_M\Data\BM061923\
 Data File : BM040311.D
 Acq On : 19 Jun 2023 13:01
 Operator : MA/JU
 Sample : 03080-13
 Misc :
 ALS Vial : 6 Sample Multiplier: 1

Instrument :
 BNA_M
 ClientSampleId :
 DCFJ2

Quant Time: Jun 20 00:12:43 2023
 Quant Method : Z:\svoasrv\HPCHEM1\BNA_M\Methods\SFAM-EPA-SIM-BM061423.M
 Quant Title : ASP BNA STANDARDS FOR 5 POINT CALIBRATION
 QLast Update : Thu Jun 15 00:31:16 2023
 Response via : Initial Calibration

Compound	R.T.	QIon	Response	Conc	Units	Dev(Min)

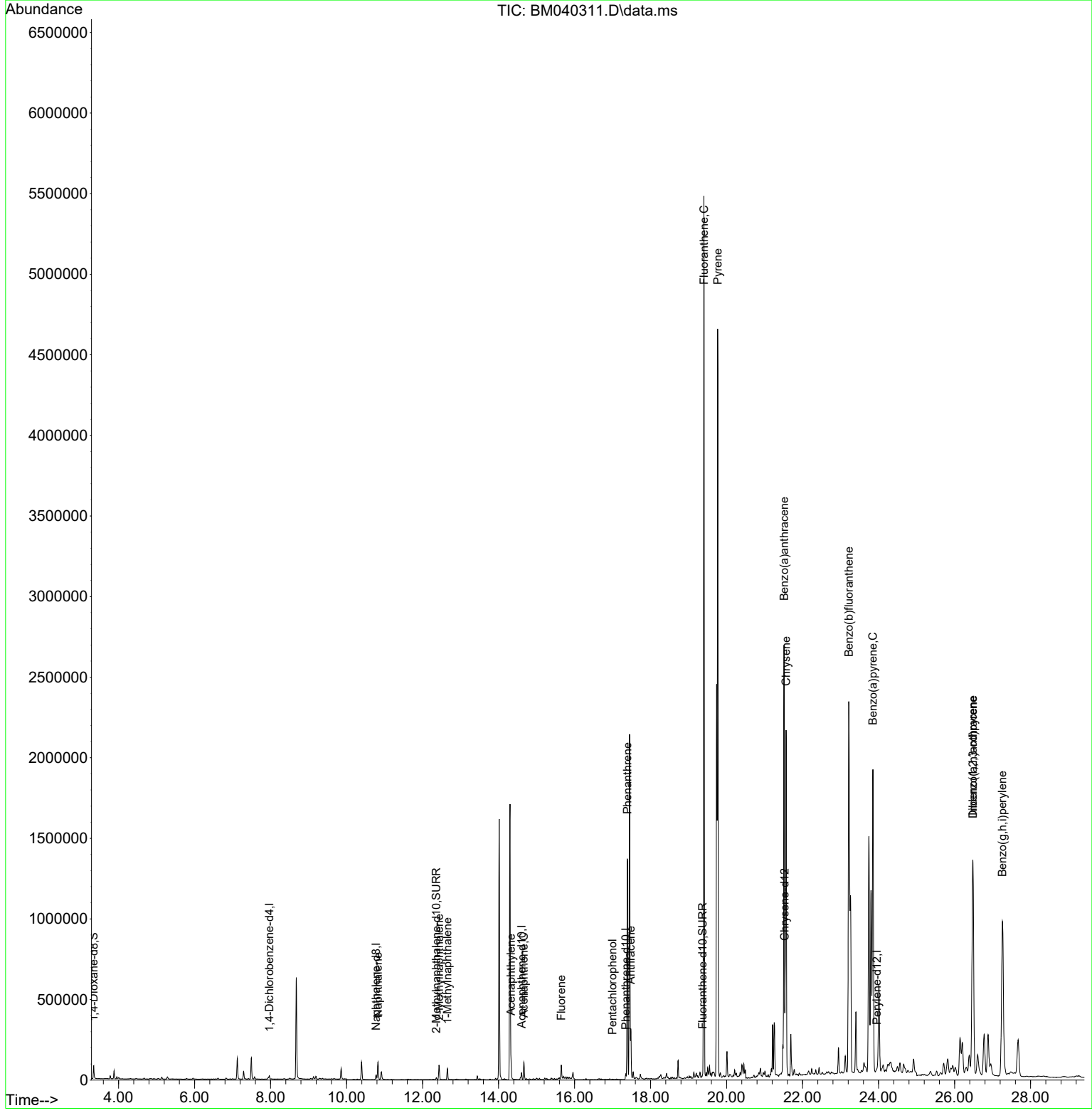
Internal Standards						
1) 1,4-Dichlorobenzene-d4	7.966	152	10166	0.400	ng/ul	0.00
4) Naphthalene-d8	10.778	136	39310	0.400	ng/ul #	0.00
9) Acenaphthene-d10	14.605	164	22340	0.400	ng/ul	0.00
13) Phenanthrene-d10	17.349	188	41090	0.400	ng/ul	0.00
17) Chrysene-d12	21.527	240	21953	0.400	ng/ul #	0.00
23) Perylene-d12	23.953	264	32935	0.400	ng/ul #	0.00
System Monitoring Compounds						
3) 1,4-Dioxane-d8	3.346	96	48737	3.882	ng/ul	0.00
6) 2-Methylnaphthalene-d10	12.362	152	15002	0.301	ng/ul	-0.01
18) Fluoranthene-d10	19.371	212	24660	0.450	ng/ul	0.00
Target Compounds						
						Qvalue
5) Naphthalene	10.828	128	150673	1.618	ng/ul	100
7) 2-Methylnaphthalene	12.434	142	64386	1.112	ng/ul	99
8) 1-Methylnaphthalene	12.654	142	47128	0.777	ng/ul	99
10) Acenaphthylene	14.328	152	115116	1.473	ng/ul	98
11) Acenaphthene	14.665	153	61469	0.918	ng/ul	99
12) Fluorene	15.651	166	53143	0.712	ng/ul#	98
14) Pentachlorophenol	16.999	266	708	0.084	ng/ul	96
15) Phenanthrene	17.387	178	1385159	12.821	ng/ul	99
16) Anthracene	17.480	178	306869	3.353	ng/ul	99
19) Fluoranthene	19.403	202	4363507	58.351	ng/ul	99
20) Pyrene	19.766	202	3707378	47.717	ng/ul	99
21) Benzo(a)anthracene	21.512	228	2267565	34.994	ng/ul	98
22) Chrysene	21.565	228	2165096	31.630	ng/ul	97
24) Benzo(b)fluoranthene	23.216	252	3798243	31.284	ng/ul	90
26) Benzo(a)pyrene	23.851	252	2600348	26.101	ng/ul#	83
27) Indeno(1,2,3-cd)pyrene	26.481	276	2282745	18.101	ng/ul#	87
28) Dibenzo(a,h)anthracene	26.484	278	602682	5.953	ng/ul	97
29) Benzo(g,h,i)perylene	27.259	276	2177051	20.669	ng/ul	97

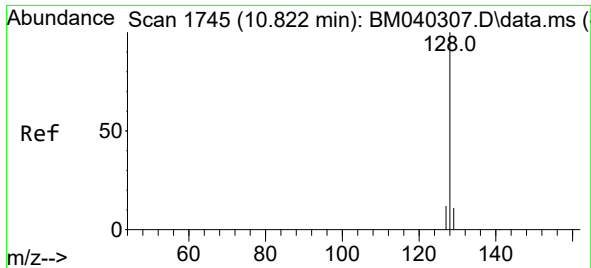
(#) = qualifier out of range (m) = manual integration (+) = signals summed

Data Path : Z:\svoasrv\HPCHEM1\BNA_M\Data\BM061923\
 Data File : BM040311.D
 Acq On : 19 Jun 2023 13:01
 Operator : MA/JU
 Sample : 03080-13
 Misc :
 ALS Vial : 6 Sample Multiplier: 1

Instrument :
 BNA_M
ClientSampleId :
 DCFJ2

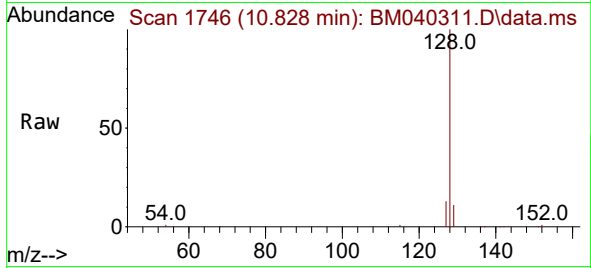
Quant Time: Jun 20 00:12:43 2023
 Quant Method : Z:\svoasrv\HPCHEM1\BNA_M\Methods\SFAM-EPA-SIM-BM061423.M
 Quant Title : ASP BNA STANDARDS FOR 5 POINT CALIBRATION
 QLast Update : Thu Jun 15 00:31:16 2023
 Response via : Initial Calibration



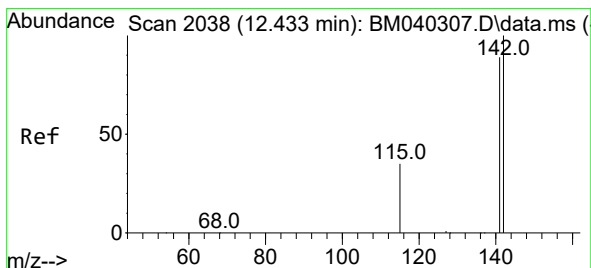
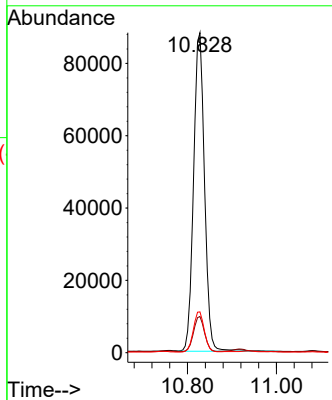
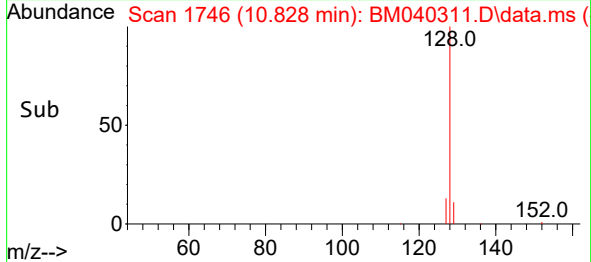


#5
 Naphthalene
 Concen: 1.618 ng/ul
 RT: 10.828 min Scan# 1746
 Delta R.T. -0.005 min
 Lab File: BM040311.D
 Acq: 19 Jun 2023 13:01

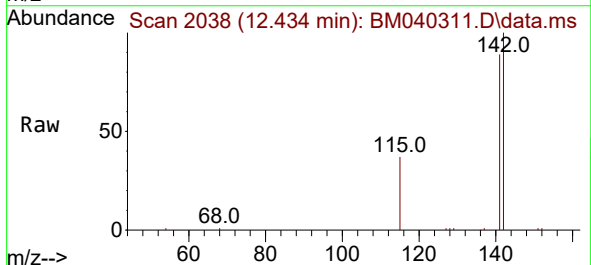
Instrument :
 BNA_M
 ClientSampleId :
 DCFJ2



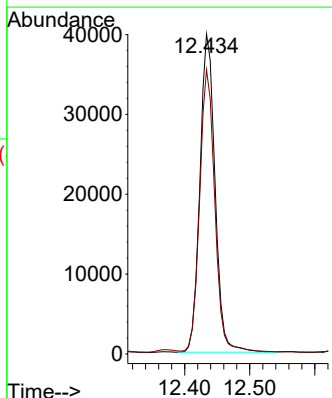
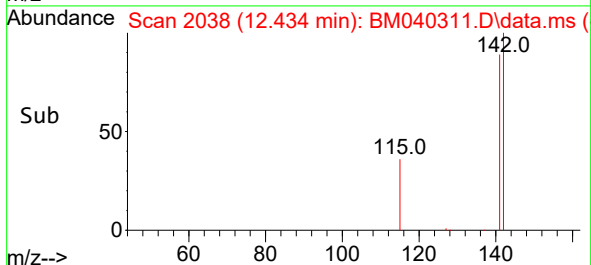
Tgt Ion:128 Resp: 150673
 Ion Ratio Lower Upper
 128 100
 129 11.3 9.1 13.7
 127 12.7 10.4 15.6

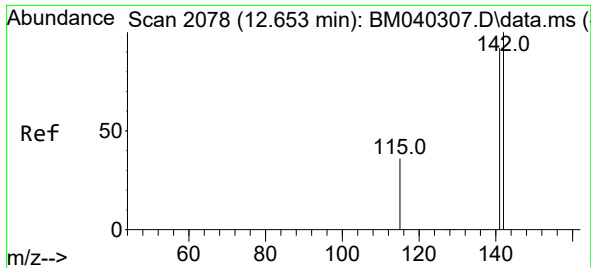


#7
 2-Methylnaphthalene
 Concen: 1.112 ng/ul
 RT: 12.434 min Scan# 2038
 Delta R.T. -0.011 min
 Lab File: BM040311.D
 Acq: 19 Jun 2023 13:01



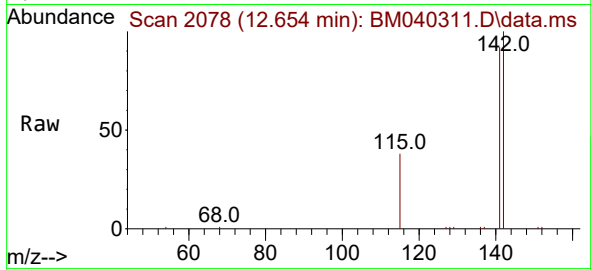
Tgt Ion:142 Resp: 64386
 Ion Ratio Lower Upper
 142 100
 141 89.2 70.6 106.0



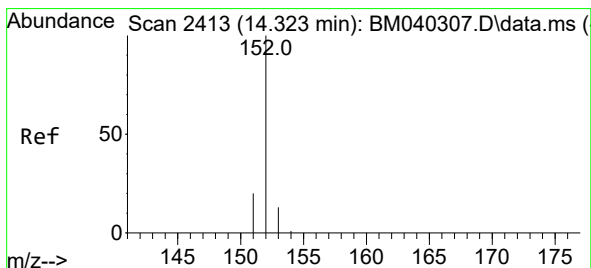
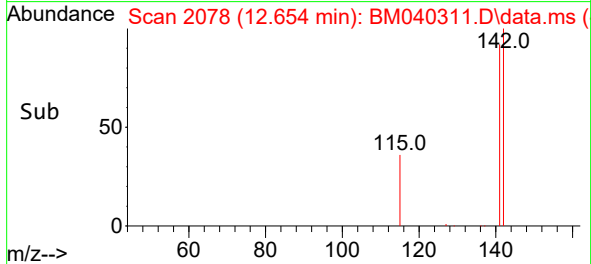
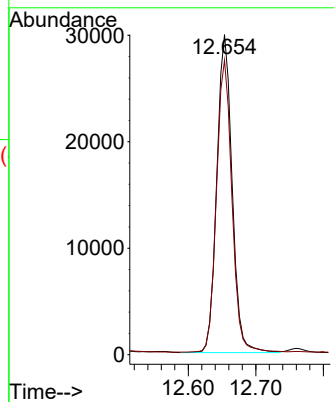


#8
 1-Methylnaphthalene
 Concen: 0.777 ng/ul
 RT: 12.654 min Scan# 2078
 Delta R.T. -0.011 min
 Lab File: BM040311.D
 Acq: 19 Jun 2023 13:01

Instrument :
 BNA_M
 ClientSampleId :
 DCFJ2

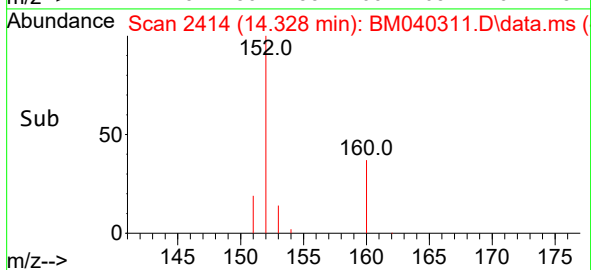
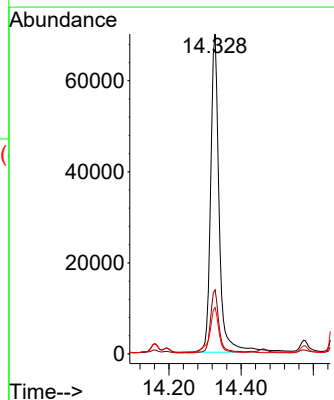
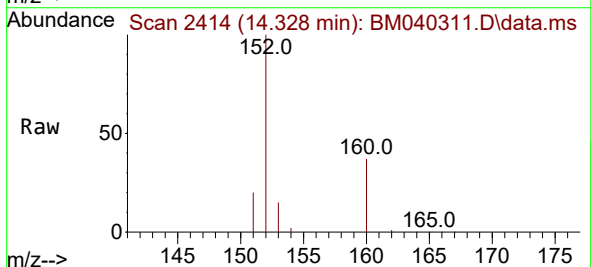


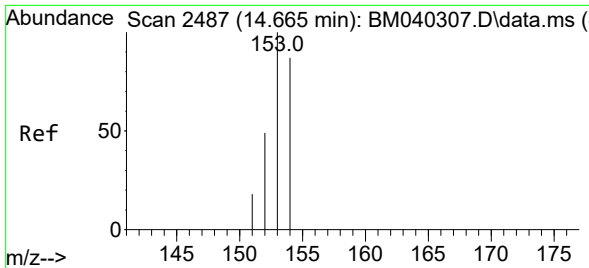
Tgt Ion:142 Resp: 47128
 Ion Ratio Lower Upper
 142 100
 141 92.2 73.0 109.4



#10
 Acenaphthylene
 Concen: 1.473 ng/ul
 RT: 14.328 min Scan# 2414
 Delta R.T. -0.004 min
 Lab File: BM040311.D
 Acq: 19 Jun 2023 13:01

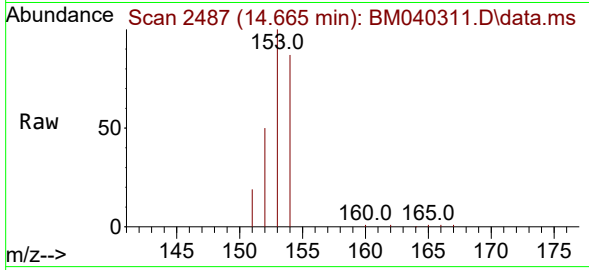
Tgt Ion:152 Resp: 115116
 Ion Ratio Lower Upper
 152 100
 151 20.1 16.3 24.5
 153 14.5 10.7 16.1



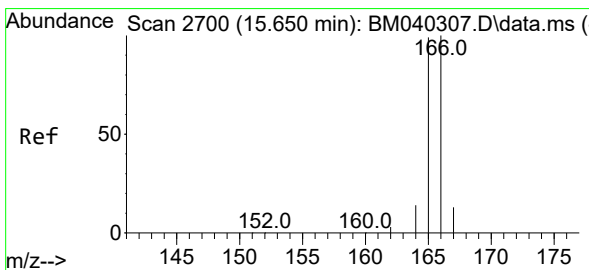
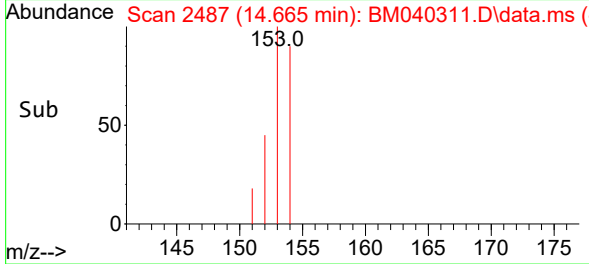
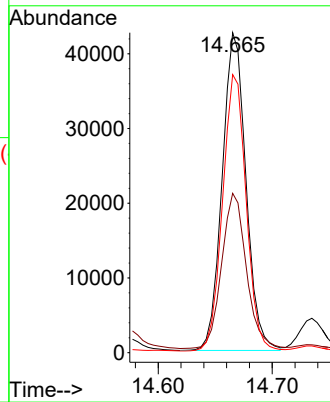


#11
 Acenaphthene
 Concen: 0.918 ng/u1
 RT: 14.665 min Scan# 2487
 Delta R.T. -0.009 min
 Lab File: BM040311.D
 Acq: 19 Jun 2023 13:01

Instrument :
 BNA_M
 ClientSampleId :
 DCFJ2

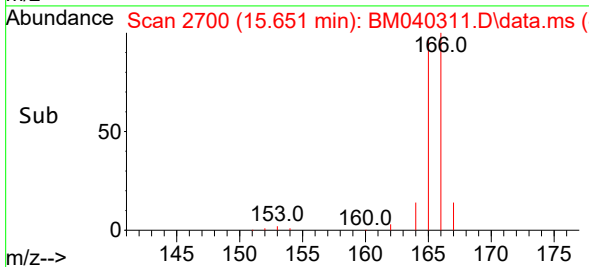
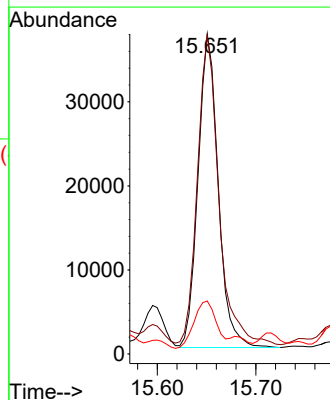
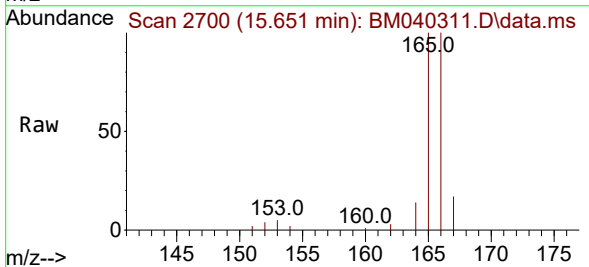


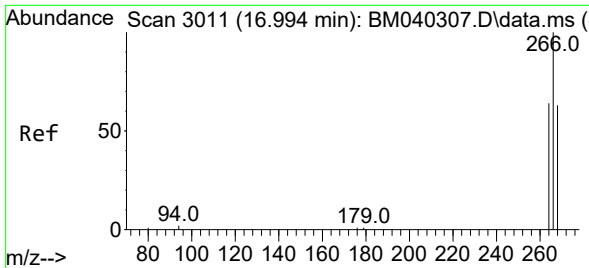
Tgt Ion:153 Resp: 61469
 Ion Ratio Lower Upper
 153 100
 152 49.8 40.3 60.5
 154 86.9 70.5 105.7



#12
 Fluorene
 Concen: 0.712 ng/u1
 RT: 15.651 min Scan# 2700
 Delta R.T. -0.009 min
 Lab File: BM040311.D
 Acq: 19 Jun 2023 13:01

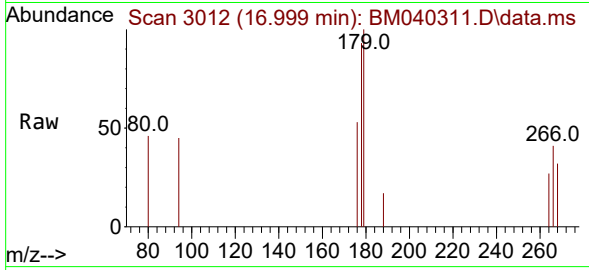
Tgt Ion:166 Resp: 53143
 Ion Ratio Lower Upper
 166 100
 165 99.5 78.2 117.4
 167 16.6 11.0 16.4#



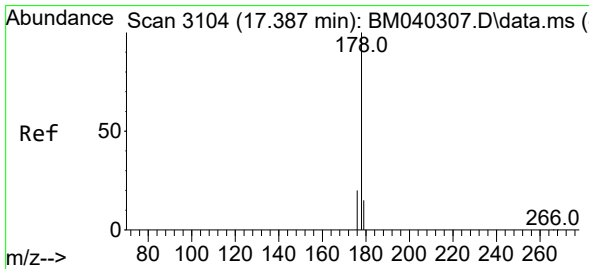
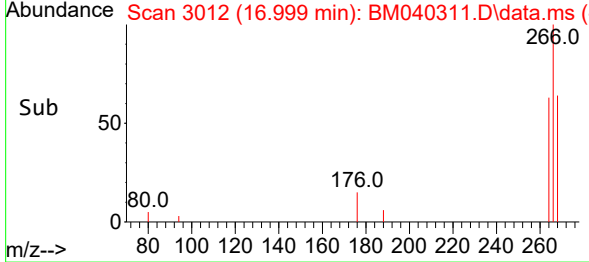
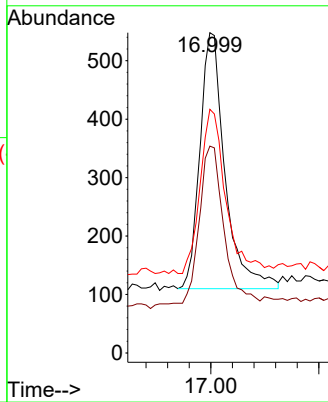


#14
 Pentachlorophenol
 Concen: 0.084 ng/u1
 RT: 16.999 min Scan# 3012
 Delta R.T. -0.008 min
 Lab File: BM040311.D
 Acq: 19 Jun 2023 13:01

Instrument :
 BNA_M
 ClientSampleId :
 DCFJ2

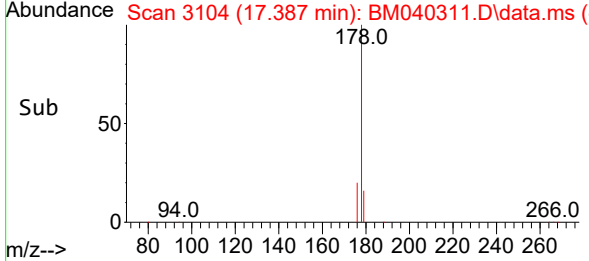
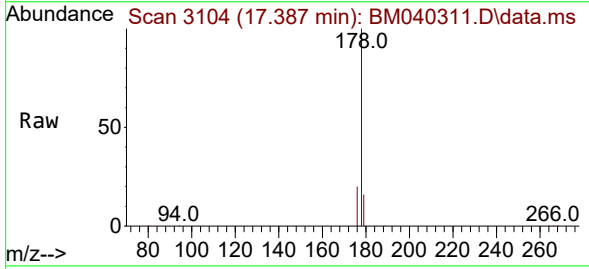
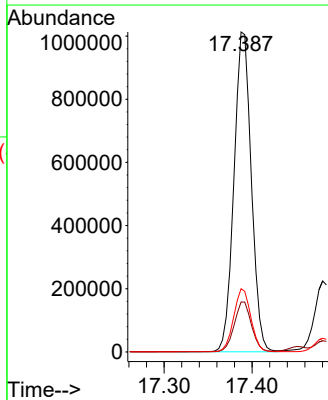


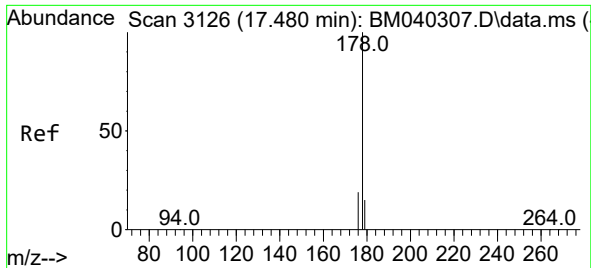
Tgt Ion:266 Resp: 708
 Ion Ratio Lower Upper
 266 100
 264 66.2 49.4 74.0
 268 65.5 51.3 76.9



#15
 Phenanthrene
 Concen: 12.821 ng/u1
 RT: 17.387 min Scan# 3104
 Delta R.T. -0.008 min
 Lab File: BM040311.D
 Acq: 19 Jun 2023 13:01

Tgt Ion:178 Resp: 1385159
 Ion Ratio Lower Upper
 178 100
 179 15.6 12.6 19.0
 176 19.8 16.1 24.1



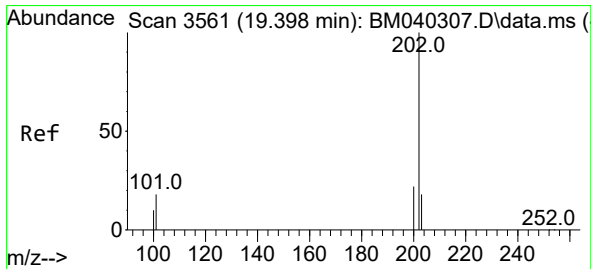
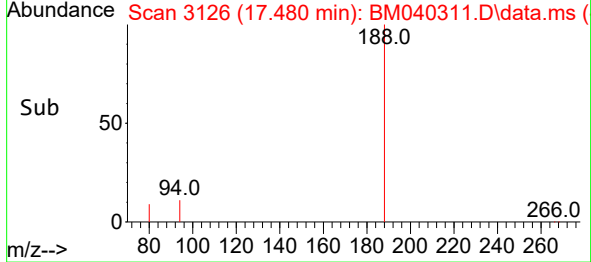
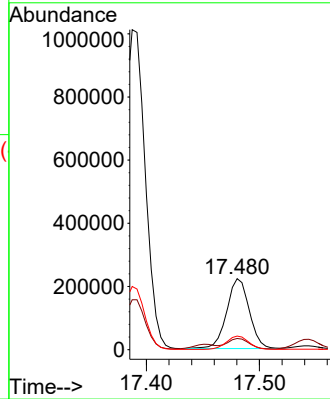
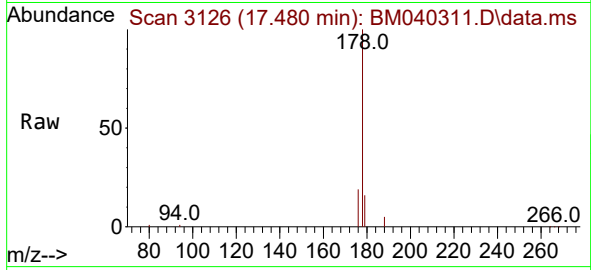


#16
 Anthracene
 Concen: 3.353 ng/u1
 RT: 17.480 min Scan# 3126
 Delta R.T. -0.008 min
 Lab File: BM040311.D
 Acq: 19 Jun 2023 13:01

Instrument :
 BNA_M
 ClientSampleId :
 DCFJ2

Tgt Ion:178 Resp: 306869

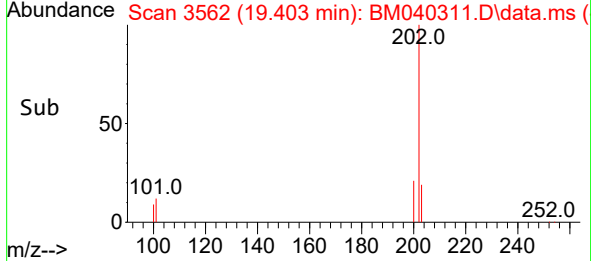
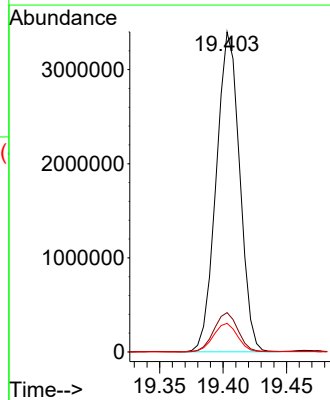
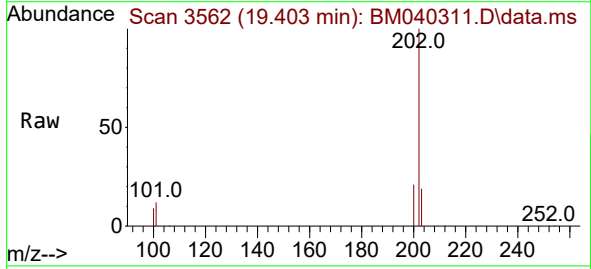
Ion	Ratio	Lower	Upper
178	100		
179	15.8	13.0	19.4
176	19.2	15.5	23.3

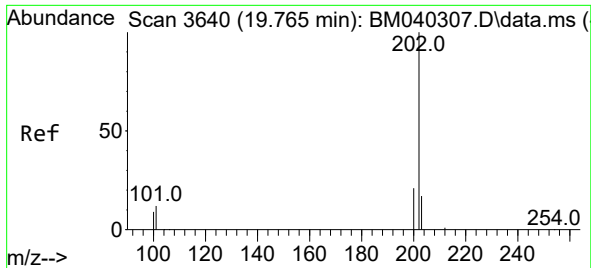


#19
 Fluoranthene
 Concen: 58.351 ng/u1
 RT: 19.403 min Scan# 3562
 Delta R.T. -0.004 min
 Lab File: BM040311.D
 Acq: 19 Jun 2023 13:01

Tgt Ion:202 Resp: 4363507

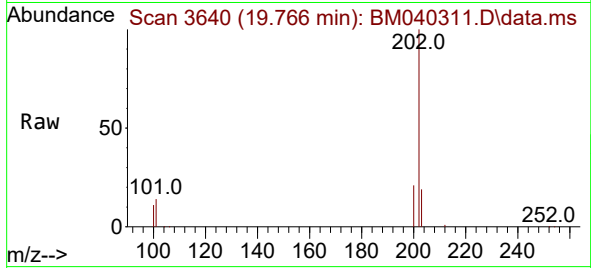
Ion	Ratio	Lower	Upper
202	100		
101	12.3	10.2	15.4
100	8.9	7.6	11.4



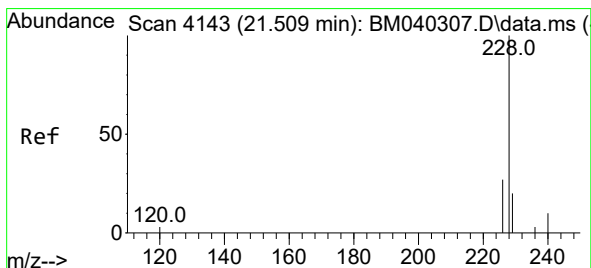
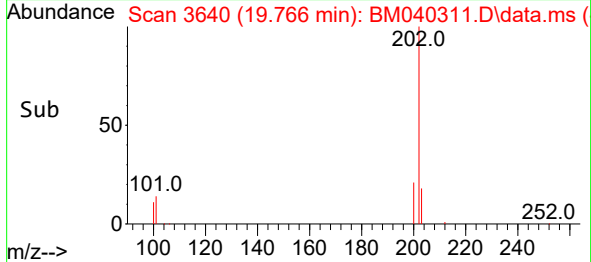
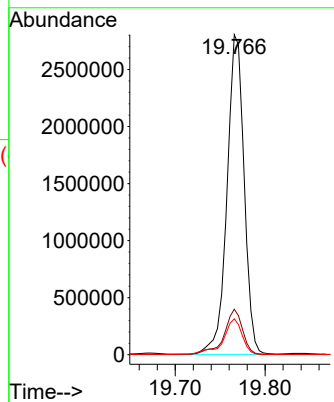


#20
 Pyrene
 Concen: 47.717 ng/ul
 RT: 19.766 min Scan# 30
 Delta R.T. -0.004 min
 Lab File: BM040311.D
 Acq: 19 Jun 2023 13:01

Instrument :
 BNA_M
 ClientSampleId :
 DCFJ2

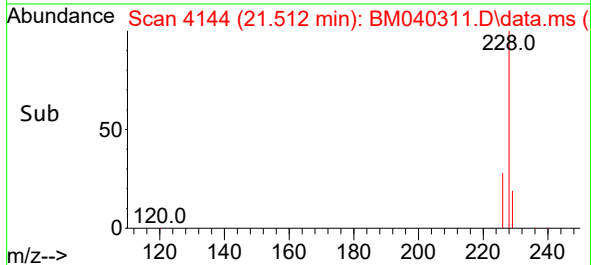
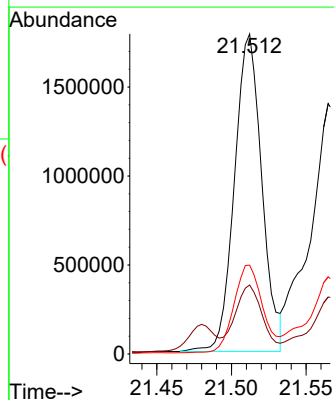
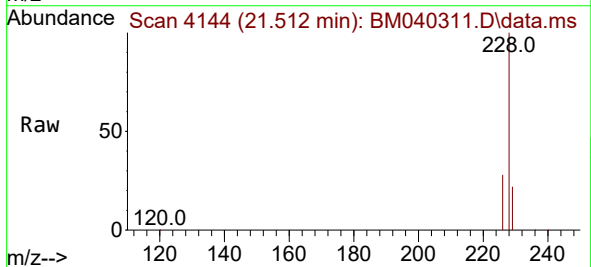


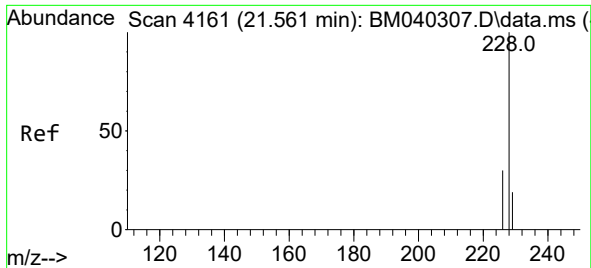
Tgt Ion:202 Resp: 3707378
 Ion Ratio Lower Upper
 202 100
 101 14.2 11.8 17.8
 100 11.2 9.3 13.9



#21
 Benzo(a)anthracene
 Concen: 34.994 ng/ul
 RT: 21.512 min Scan# 4144
 Delta R.T. -0.003 min
 Lab File: BM040311.D
 Acq: 19 Jun 2023 13:01

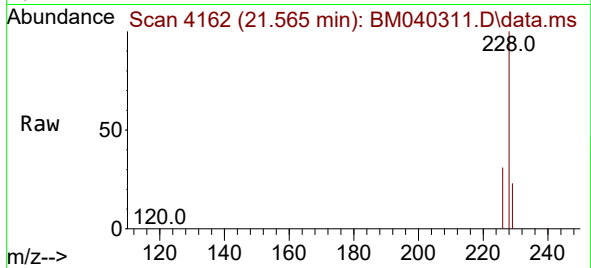
Tgt Ion:228 Resp: 2267565
 Ion Ratio Lower Upper
 228 100
 229 21.6 15.8 23.8
 226 27.8 22.0 33.0



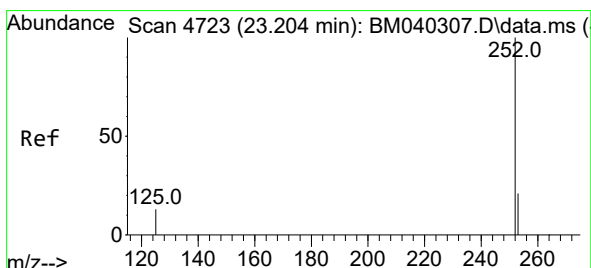
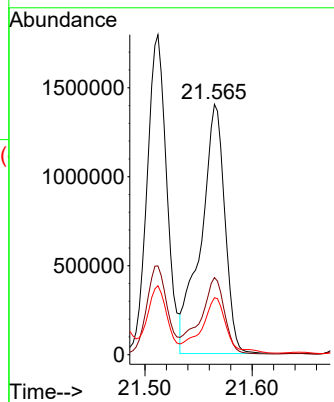
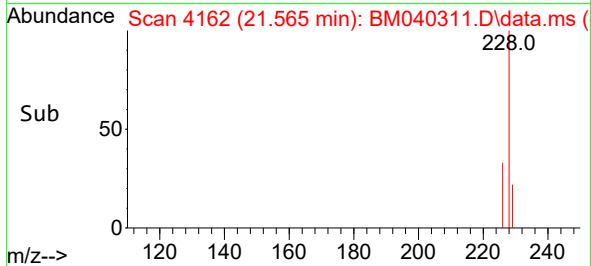


#22
 Chrysene
 Concen: 31.630 ng/u1
 RT: 21.565 min Scan# 4162
 Delta R.T. -0.006 min
 Lab File: BM040311.D
 Acq: 19 Jun 2023 13:01

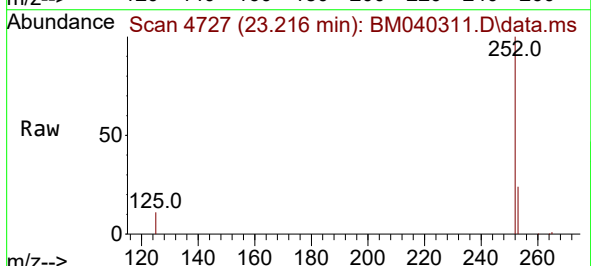
Instrument :
 BNA_M
 ClientSampleId :
 DCFJ2



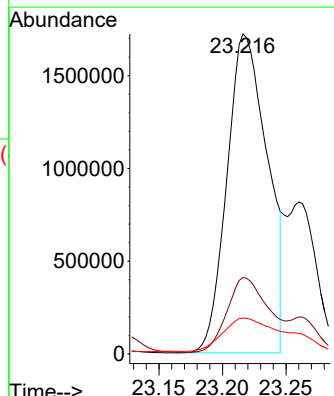
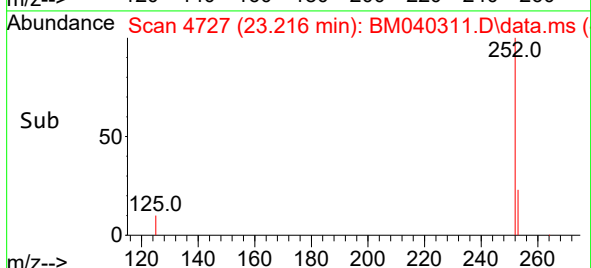
Tgt Ion:228 Resp: 2165096
 Ion Ratio Lower Upper
 228 100
 226 30.8 24.3 36.5
 229 22.8 15.7 23.5

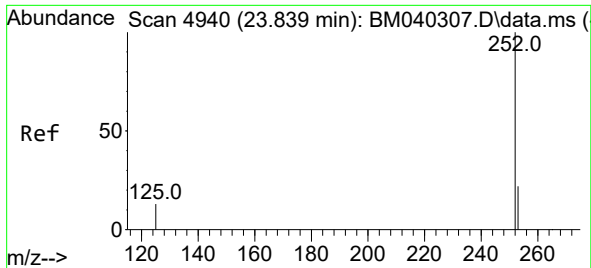


#24
 Benzo(b)fluoranthene
 Concen: 31.284 ng/u1
 RT: 23.216 min Scan# 4727
 Delta R.T. 0.000 min
 Lab File: BM040311.D
 Acq: 19 Jun 2023 13:01



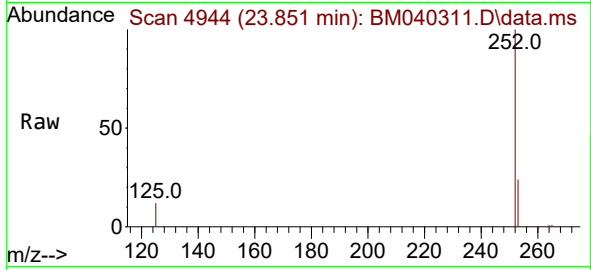
Tgt Ion:252 Resp: 3798243
 Ion Ratio Lower Upper
 252 100
 253 23.9 0.0 52.4
 125 11.3 0.0 38.4



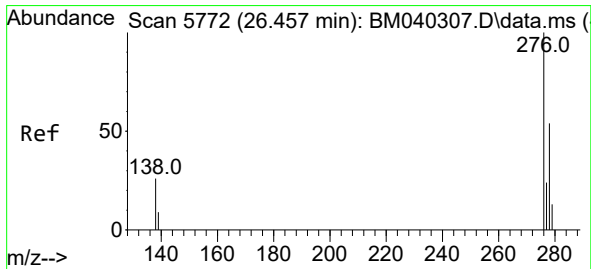
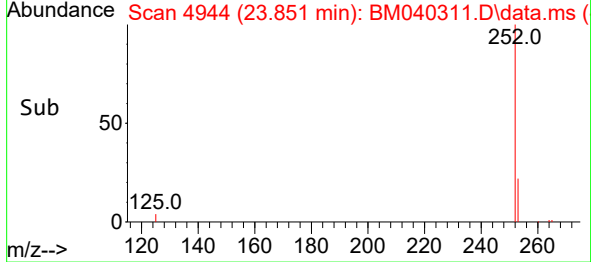
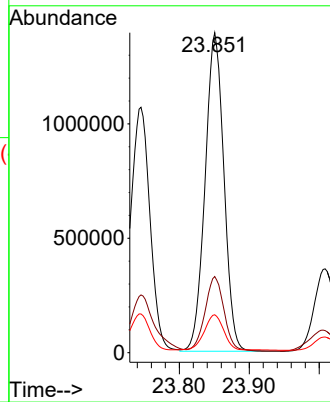


#26
 Benzo(a)pyrene
 Concen: 26.101 ng/u1
 RT: 23.851 min Scan# 4944
 Delta R.T. 0.000 min
 Lab File: BM040311.D
 Acq: 19 Jun 2023 13:01

Instrument :
 BNA_M
 ClientSampleId :
 DCFJ2

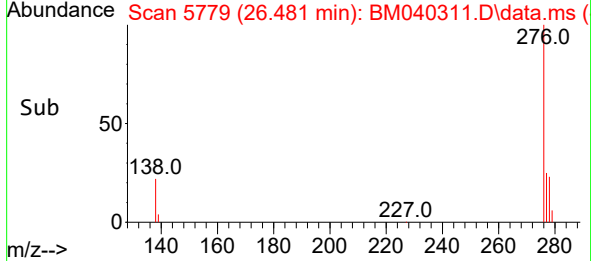
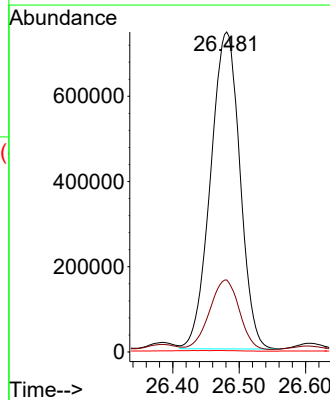
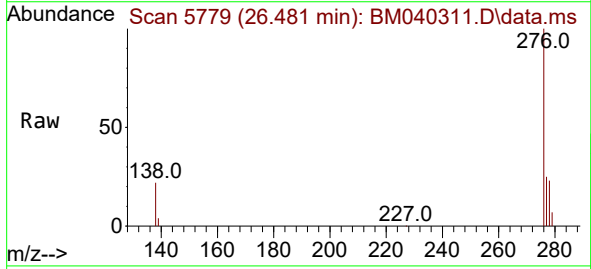


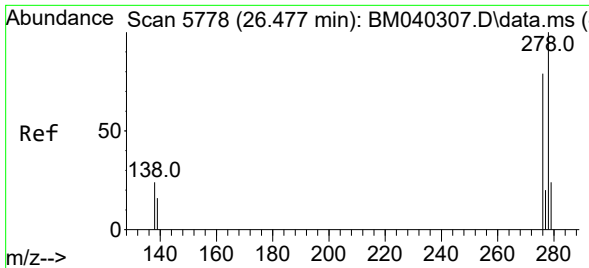
Tgt Ion:252 Resp: 2600348
 Ion Ratio Lower Upper
 252 100
 253 23.8 23.4 35.0
 125 11.9 19.7 29.5#



#27
 Indeno(1,2,3-cd)pyrene
 Concen: 18.101 ng/u1
 RT: 26.481 min Scan# 5779
 Delta R.T. 0.004 min
 Lab File: BM040311.D
 Acq: 19 Jun 2023 13:01

Tgt Ion:276 Resp: 2282745
 Ion Ratio Lower Upper
 276 100
 138 22.2 23.3 34.9#
 227 0.4 0.1 0.1#

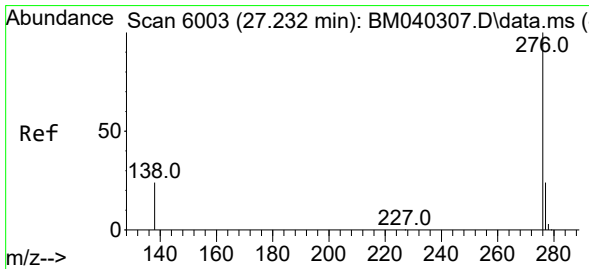
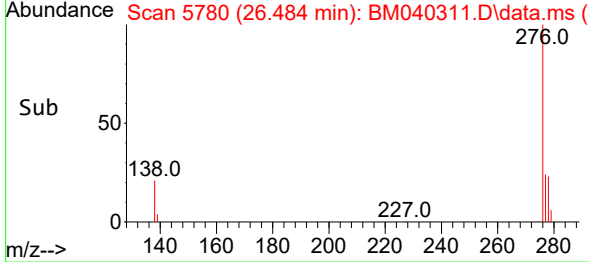
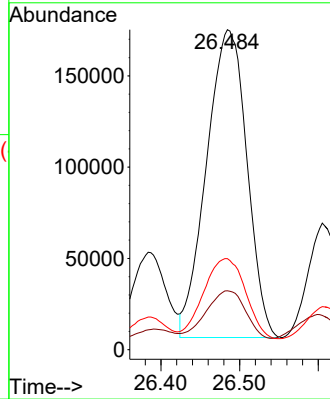
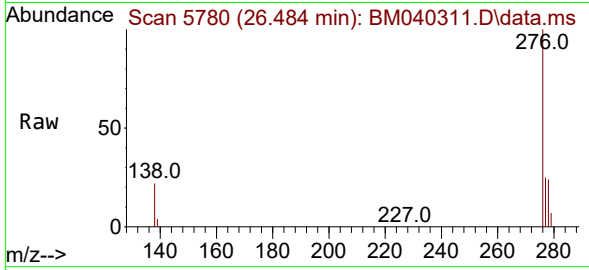




#28
 Dibenzo(a,h)anthracene
 Concen: 5.953 ng/ul
 RT: 26.484 min Scan# 51
 Delta R.T. -0.013 min
 Lab File: BM040311.D
 Acq: 19 Jun 2023 13:01

Instrument :
 BNA_M
 ClientSampleId :
 DCFJ2

Tgt Ion:278 Resp: 602682
 Ion Ratio Lower Upper
 278 100
 139 18.4 16.4 24.6
 279 28.5 21.8 32.8



#29
 Benzo(g,h,i)perylene
 Concen: 20.669 ng/ul
 RT: 27.259 min Scan# 6011
 Delta R.T. 0.004 min
 Lab File: BM040311.D
 Acq: 19 Jun 2023 13:01

Tgt Ion:276 Resp: 2177051
 Ion Ratio Lower Upper
 276 100
 138 23.2 21.0 31.4
 277 24.3 19.6 29.4

