

Data Path : Z:\svoasrv\HPCHEM1\BNA\_M\Data\BM062121\  
 Data File : BM030500.D  
 Acq On : 21 Jun 2021 11:51  
 Operator : CG/JU  
 Sample : M2649-06  
 Misc :  
 ALS Vial : 5 Sample Multiplier: 1

Instrument :  
 BNA\_M  
 ClientSampled :  
 BG5J1

Manual Integrations  
 APPROVED

mohammad  
 6/22/2021 8:16:08 AM

Quant Time: Jun 21 12:28:00 2021  
 Quant Method : Z:\SVOASRV\HPCHEM1\BNA\_M\METHODS\SFAM-EPA-BM060621.M  
 Quant Title : SVOA CALIBRATION  
 QLast Update : Mon Jun 21 10:48:13 2021  
 Response via : Initial Calibration

Compound	R.T.	QIon	Response	Conc	Units	Dev(Min)
Internal Standards						
1) 1,4-Dichlorobenzene-d4	7.828	152	176626	20.000	ng/ul	0.00
20) Naphthalene-d8	10.610	136	653373	20.000	ng/ul	0.00
38) Acenaphthene-d10	14.445	164	382337	20.000	ng/ul	0.00
64) Phenanthrene-d10	17.186	188	749803	20.000	ng/ul	0.00
79) Chrysene-d12	21.356	240	758430	20.000	ng/ul	0.00
88) Perylene-d12	23.633	264	798099	20.000	ng/ul	0.00
System Monitoring Compounds						
3) 1,4-Dioxane-d8	3.340	96	12554	2.714	ng/uL	0.00
4) Pyridine-d5	3.769	84	67282	5.536	ng/ul	0.02
7) Phenol-d5	6.998	99	174703	11.381	ng/ul	0.00
9) Bis-(2-Chloroethyl)eth...	7.157	67	119213	12.032	ng/ul	0.00
11) 2-Chlorophenol-d4	7.363	132	150726	13.577	ng/ul	0.00
15) 4-Methylphenol-d8	8.528	113	126168	10.291	ng/ul	0.00
21) Nitrobenzene-d5	8.975	128	66207	14.803	ng/ul	0.00
24) 2-Nitrophenol-d4	9.698	143	64106	14.432	ng/ul	0.00
28) 2,4-Dichlorophenol-d3	10.234	165	118022	12.198	ng/ul	0.00
31) 4-Chloroaniline-d4	10.745	131	119186	8.058	ng/ul	0.00
46) Dimethylphthalate-d6	13.857	166	394590	15.039	ng/ul	0.00
49) Acenaphthylene-d8	14.139	160	483301	14.744	ng/ul	0.00
54) 4-Nitrophenol-d4	14.669	143	8263	1.682	ng/ul	0.02
60) Fluorene-d10	15.439	176	350686	14.929	ng/ul	0.00
65) 4,6-Dinitro-2-methylph...	15.557	200	4599	1.063	ng/ul	0.00
73) Anthracene-d10	17.286	188	533186	15.634	ng/ul	0.00
81) Pyrene-d10	19.574	212	630397	15.880	ng/ul	0.00
92) Benzo(a)pyrene-d12	23.486	264	676870	17.008	ng/ul	0.00
Target Compounds						
30) Naphthalene	10.657	128	92685	2.799	ng/ul	100
36) 2-Methylnaphthalene	12.269	142	24215	1.028	ng/ul	90
56) Dibenzofuran	14.845	168	81778	2.527	ng/ul	99
72) Phenanthrene	17.227	178	397609	9.807	ng/ul	99
74) Anthracene	17.315	178	81149	1.983	ng/ul	99
80) Fluoranthene	19.239	202	689335	14.132	ng/ul	99
82) Pyrene	19.604	202	571499	11.079	ng/ul	95
85) Benzo(a)anthracene	21.339	228	333868	7.286	ng/ul	99
86) Bis(2-ethylhexyl)phtha...	21.268	149	132999	5.415	ng/ul	99
87) Chrysene	21.392	228	311706	6.898	ng/ul	97
90) Benzo(b)fluoranthene	22.950	252	423523	8.256	ng/ul	100
91) Benzo(k)fluoranthene	22.986	252	128472m	2.622	ng/ul	
93) Benzo(a)pyrene	23.533	252	277472	6.188	ng/ul	99
94) Indeno(1,2,3-cd)pyrene	25.938	276	188216	3.411	ng/ul#	91
95) Dibenzo(a,h)anthracene	25.938	278	47728	1.027	ng/ul#	83
96) Benzo(g,h,i)perylene	26.650	276	156187	3.444	ng/ul	95

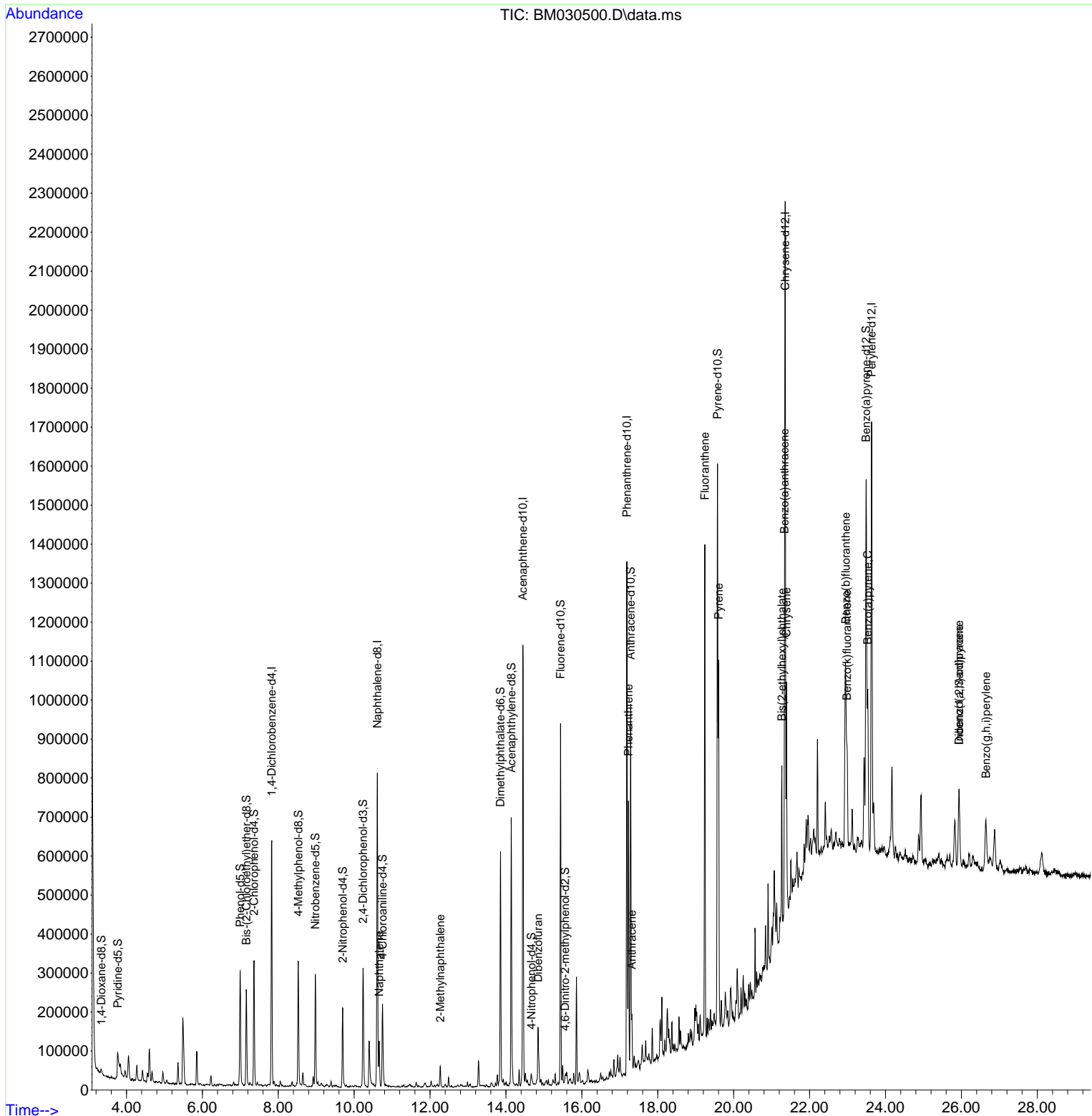
(#) = qualifier out of range (m) = manual integration (+) = signals summed

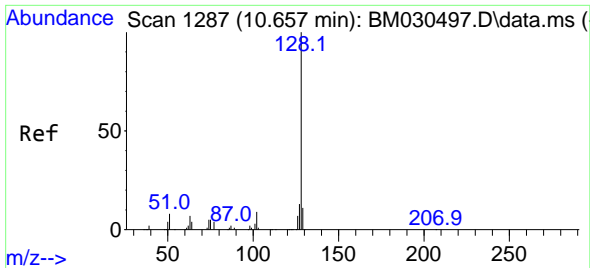
Data Path : Z:\svoasrv\HPCHEM1\BNA\_M\Data\BM062121\  
 Data File : BM030500.D  
 Acq On : 21 Jun 2021 11:51  
 Operator : CG/JU  
 Sample : M2649-06  
 Misc :  
 ALS Vial : 5 Sample Multiplier: 1

Instrument :  
 BNA\_M  
 Client Sampled :  
 BG5J1

Manual Integrations  
**APPROVED**  
 mohammad  
 6/22/2021 8:16:08 AM

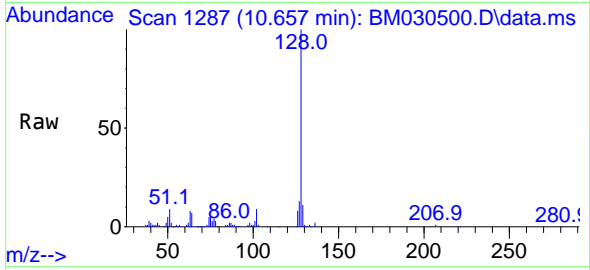
Quant Time: Jun 21 12:28:00 2021  
 Quant Method : Z:\SVOASRV\HPCHEM1\BNA\_M\METHODS\SFAM-EPA-BM060621.M  
 Quant Title : SVOA CALIBRATION  
 QLast Update : Mon Jun 21 10:48:13 2021  
 Response via : Initial Calibration





#30  
 Naphthalene  
 Concen: 2.799 ng/u1  
 RT: 10.657 min Scan# 1287  
 Delta R.T. 0.000 min  
 Lab File: BM030500.D  
 Acq: 21 Jun 2021 11:51

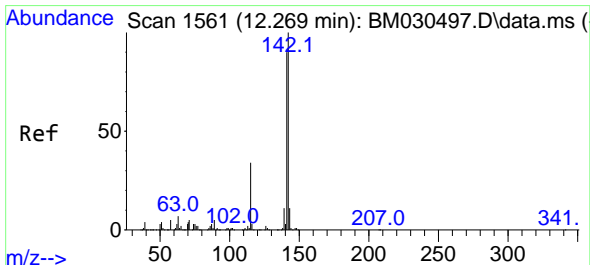
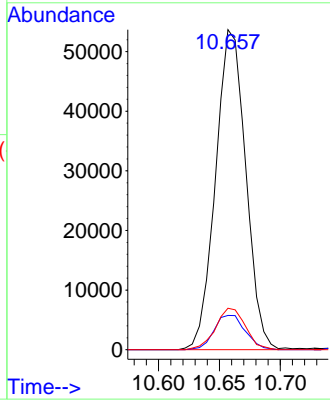
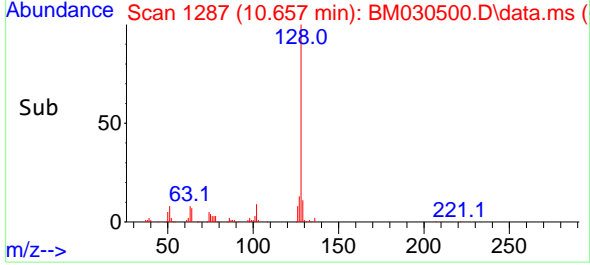
**Instrument :**  
 BNA\_M  
**ClientSampled :**  
 BG5J1



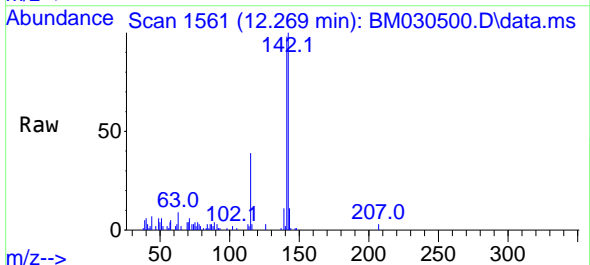
Tgt Ion:128 Resp: 92685

Ion	Ratio	Lower	Upper
128	100		
129	10.7	8.6	13.0
127	12.9	10.2	15.2

**Manual Integrations**  
**APPROVED**  
 mohammad  
 6/22/2021 8:16:08 AM

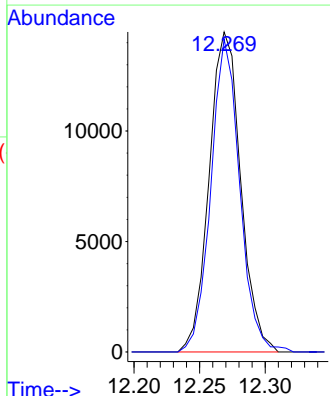
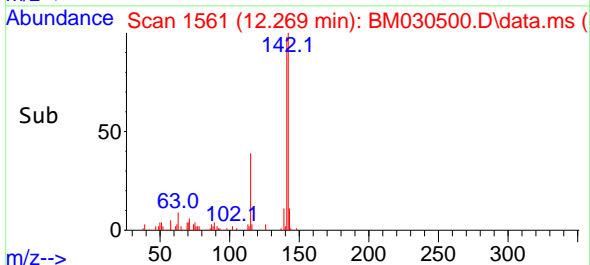


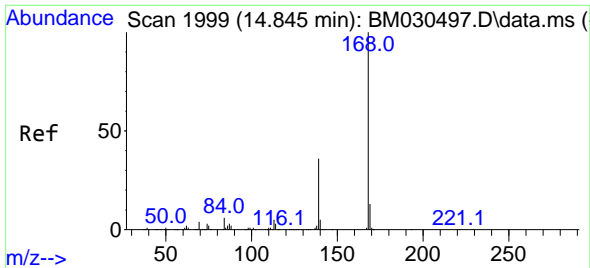
#36  
 2-Methylnaphthalene  
 Concen: 1.028 ng/u1  
 RT: 12.269 min Scan# 1561  
 Delta R.T. 0.000 min  
 Lab File: BM030500.D  
 Acq: 21 Jun 2021 11:51



Tgt Ion:142 Resp: 24215

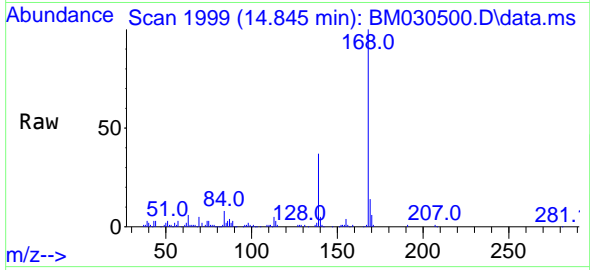
Ion	Ratio	Lower	Upper
142	100		
141	97.8	70.8	106.2





#56  
 Dibenzofuran  
 Concen: 2.527 ng/u1  
 RT: 14.845 min Scan# 1999  
 Delta R.T. 0.000 min  
 Lab File: BM030500.D  
 Acq: 21 Jun 2021 11:51

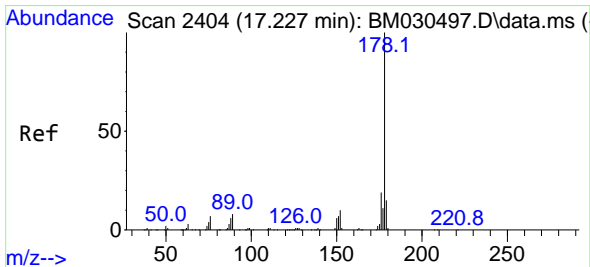
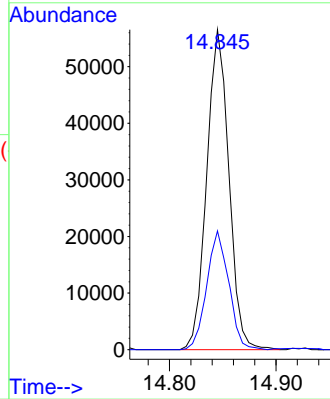
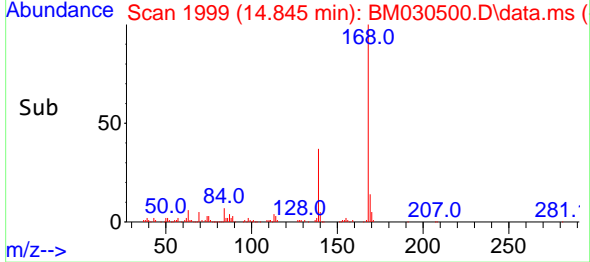
Instrument :  
 BNA\_M  
 ClientSampled :  
 BG5J1



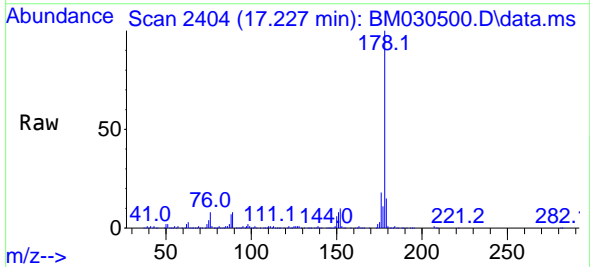
Tgt Ion:168 Resp: 81778  
 Ion Ratio Lower Upper  
 168 100  
 139 37.1 29.4 44.0

Manual Integrations  
 APPROVED

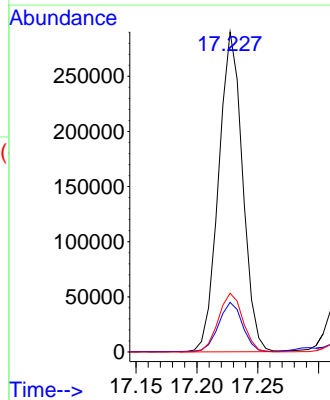
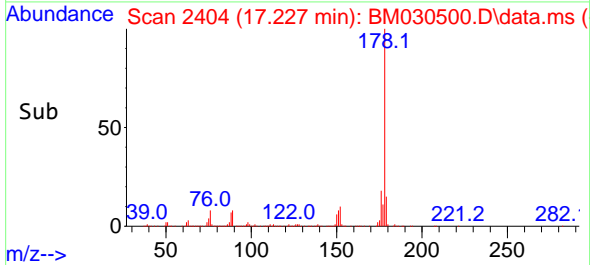
mohammad  
 6/22/2021 8:16:08 AM

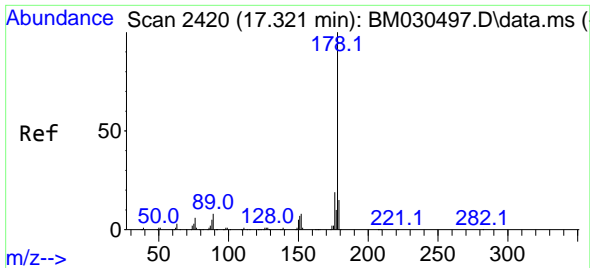


#72  
 Phenanthrene  
 Concen: 9.807 ng/u1  
 RT: 17.227 min Scan# 2404  
 Delta R.T. 0.000 min  
 Lab File: BM030500.D  
 Acq: 21 Jun 2021 11:51



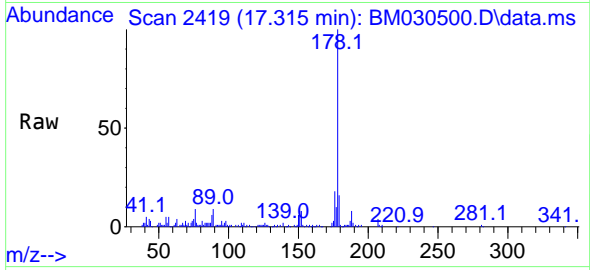
Tgt Ion:178 Resp: 397609  
 Ion Ratio Lower Upper  
 178 100  
 179 15.5 12.2 18.2  
 176 18.3 15.0 22.6





#74  
 Anthracene  
 Concen: 1.983 ng/uI  
 RT: 17.315 min Scan# 2419  
 Delta R.T. -0.006 min  
 Lab File: BM030500.D  
 Acq: 21 Jun 2021 11:51

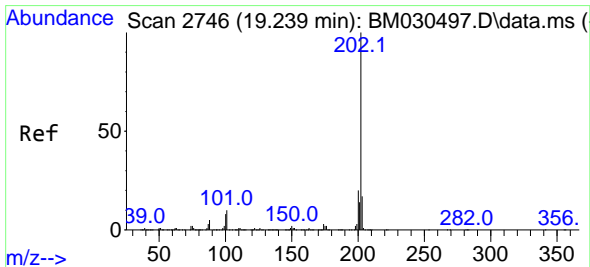
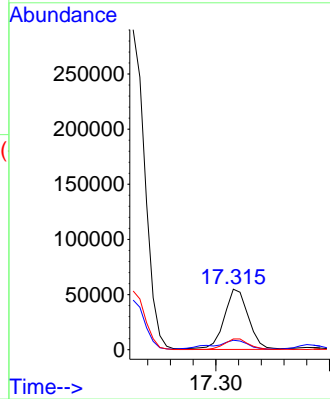
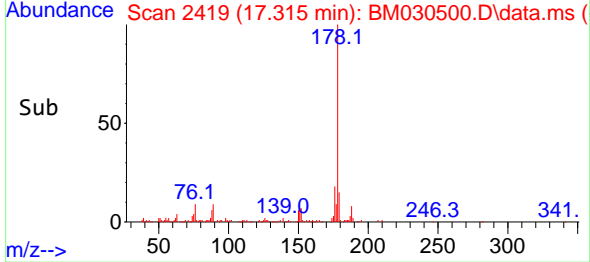
Instrument :  
 BNA\_M  
 ClientSampled :  
 BG5J1



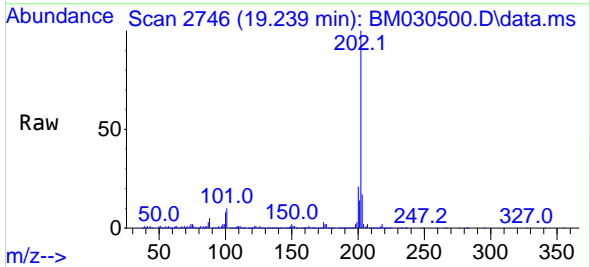
Tgt Ion:178 Resp: 81149  
 Ion Ratio Lower Upper  
 178 100  
 179 15.6 12.5 18.7  
 176 17.8 15.0 22.4

Manual Integrations  
 APPROVED

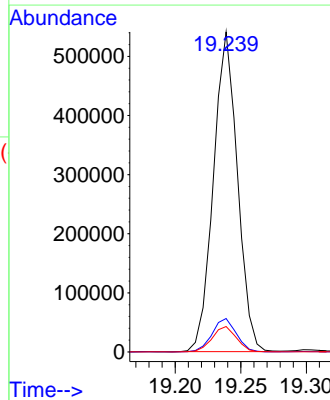
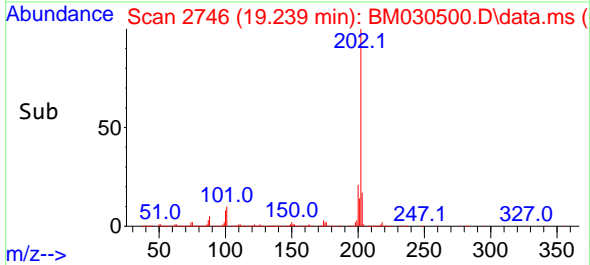
mohammad  
 6/22/2021 8:16:08 AM

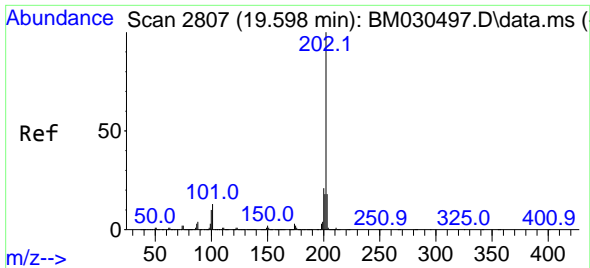


#80  
 Fluoranthene  
 Concen: 14.132 ng/uI  
 RT: 19.239 min Scan# 2746  
 Delta R.T. 0.000 min  
 Lab File: BM030500.D  
 Acq: 21 Jun 2021 11:51



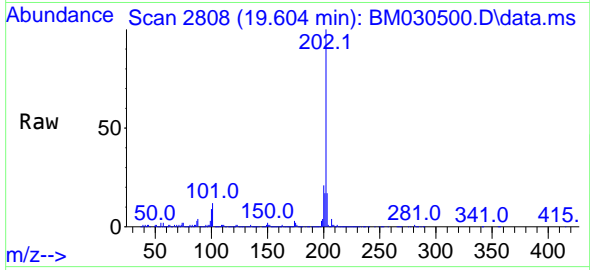
Tgt Ion:202 Resp: 689335  
 Ion Ratio Lower Upper  
 202 100  
 101 10.5 8.7 13.1  
 100 8.0 6.6 10.0





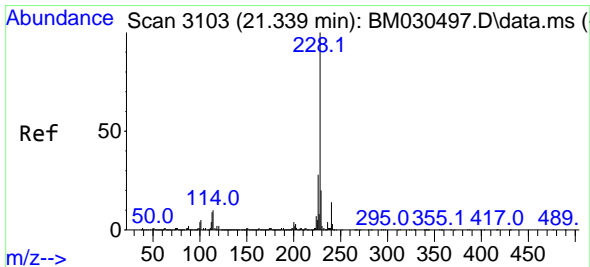
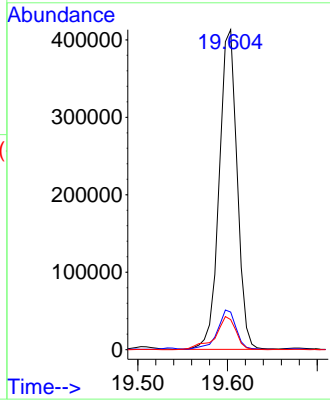
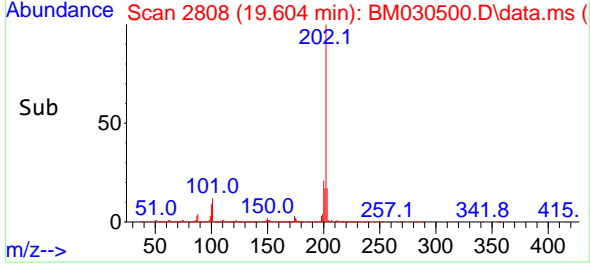
#82  
 Pyrene  
 Concen: 11.079 ng/u1  
 RT: 19.604 min Scan# 2808  
 Delta R.T. 0.006 min  
 Lab File: BM030500.D  
 Acq: 21 Jun 2021 11:51

**Instrument :**  
 BNA\_M  
**ClientSampled :**  
 BG5J1

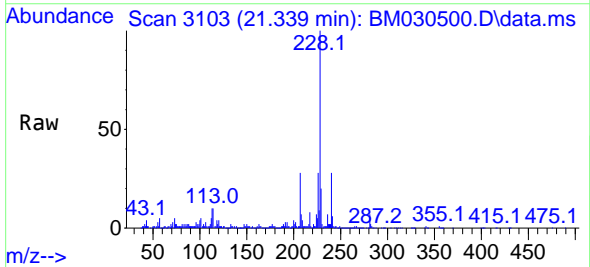


Tgt Ion:202 Resp: 571499  
 Ion Ratio Lower Upper  
 202 100  
 101 11.8 10.8 16.2  
 100 9.4 9.1 13.7

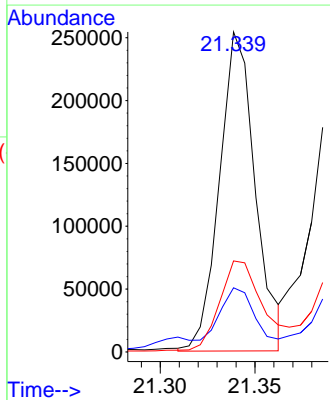
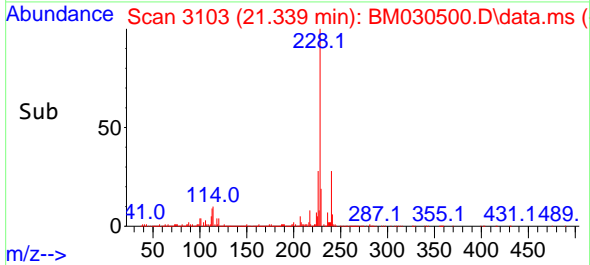
**Manual Integrations**  
**APPROVED**  
 mohammad  
 6/22/2021 8:16:08 AM

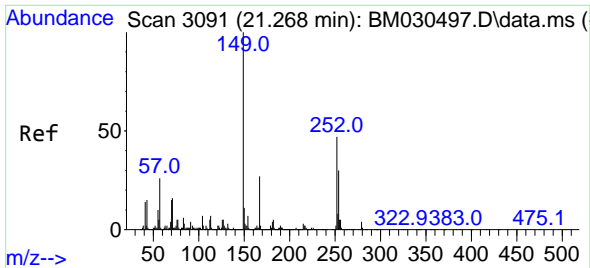


#85  
 Benzo(a)anthracene  
 Concen: 7.286 ng/u1  
 RT: 21.339 min Scan# 3103  
 Delta R.T. 0.000 min  
 Lab File: BM030500.D  
 Acq: 21 Jun 2021 11:51



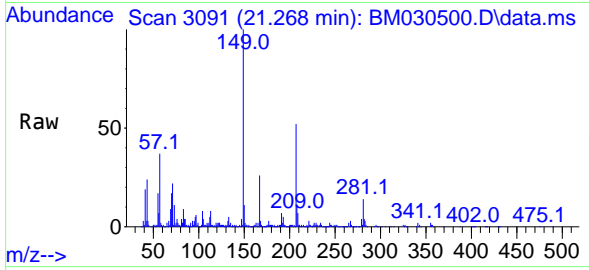
Tgt Ion:228 Resp: 333868  
 Ion Ratio Lower Upper  
 228 100  
 229 20.0 15.6 23.4  
 226 28.5 22.2 33.2





#86  
 Bis(2-ethylhexyl)phthalate  
 Concen: 5.415 ng/u1  
 RT: 21.268 min Scan# 3091  
 Delta R.T. 0.000 min  
 Lab File: BM030500.D  
 Acq: 21 Jun 2021 11:51

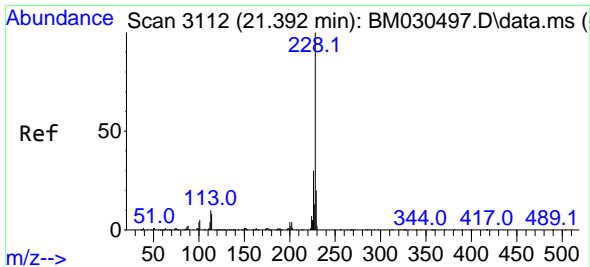
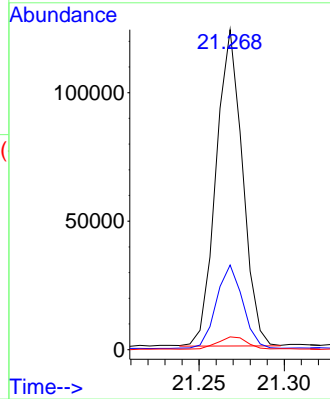
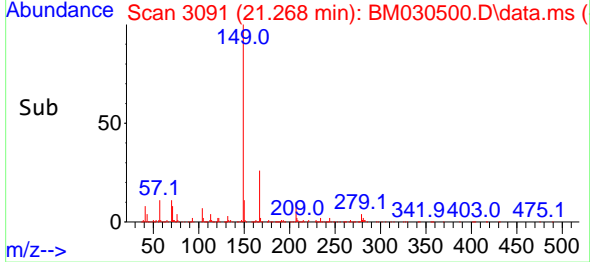
Instrument :  
 BNA\_M  
 ClientSampled :  
 BG5J1



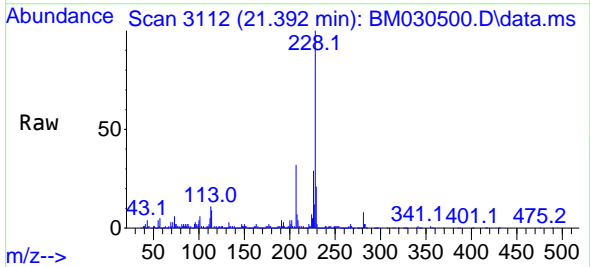
Tgt Ion:149 Resp: 132999  
 Ion Ratio Lower Upper  
 149 100  
 167 26.5 20.9 31.3  
 279 4.0 3.0 4.6

Manual Integrations  
 APPROVED

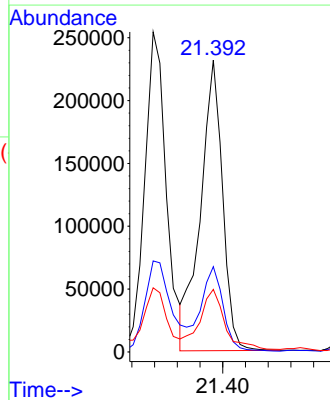
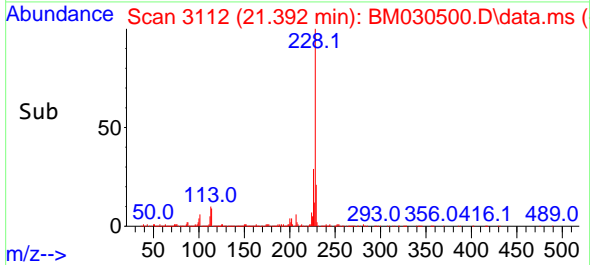
mohammad  
 6/22/2021 8:16:08 AM

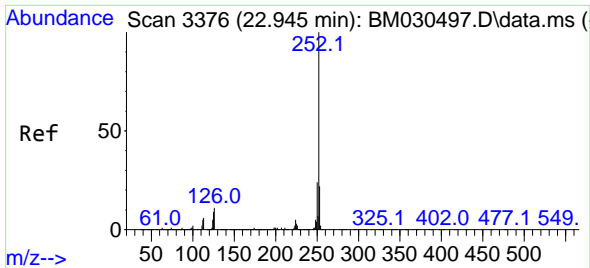


#87  
 Chrysene  
 Concen: 6.898 ng/u1  
 RT: 21.392 min Scan# 3112  
 Delta R.T. 0.000 min  
 Lab File: BM030500.D  
 Acq: 21 Jun 2021 11:51



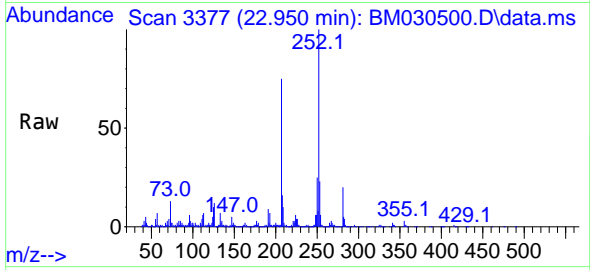
Tgt Ion:228 Resp: 311706  
 Ion Ratio Lower Upper  
 228 100  
 226 29.2 24.2 36.2  
 229 21.4 15.8 23.6





#90  
 Benzo(b)fluoranthene  
 Concen: 8.256 ng/u1  
 RT: 22.950 min Scan# 3377  
 Delta R.T. 0.006 min  
 Lab File: BM030500.D  
 Acq: 21 Jun 2021 11:51

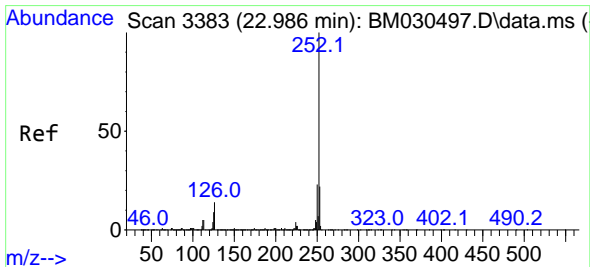
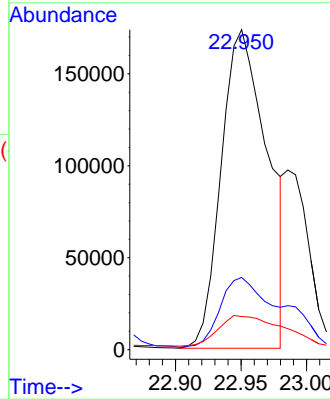
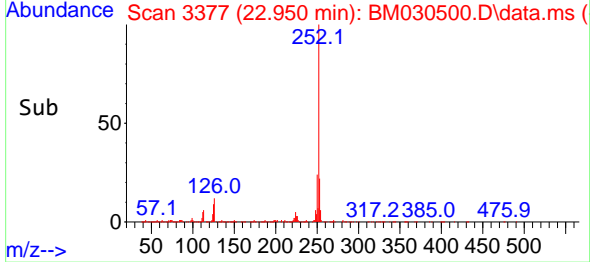
Instrument :  
 BNA\_M  
 ClientSampled :  
 BG5J1



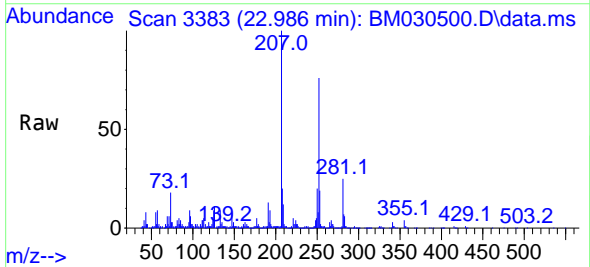
Tgt Ion:252 Resp: 423523  
 Ion Ratio Lower Upper  
 252 100  
 253 22.5 18.0 27.0  
 125 10.4 8.6 13.0

Manual Integrations  
 APPROVED

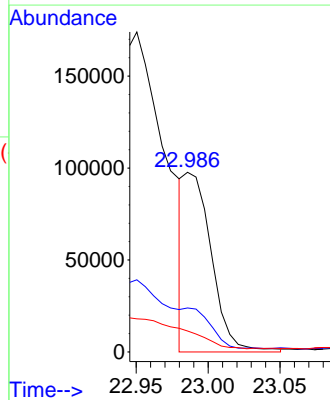
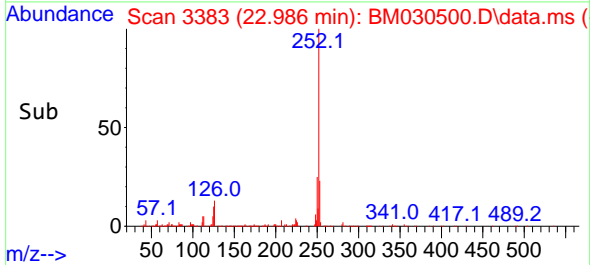
mohammad  
 6/22/2021 8:16:08 AM



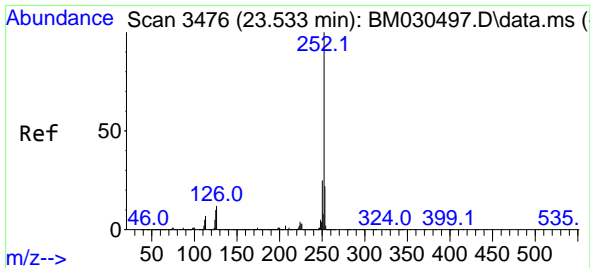
#91  
 Benzo(k)fluoranthene  
 Concen: 2.622 ng/u1 m  
 RT: 22.986 min Scan# 3383  
 Delta R.T. 0.000 min  
 Lab File: BM030500.D  
 Acq: 21 Jun 2021 11:51



Tgt Ion:252 Resp: 128472  
 Ion Ratio Lower Upper  
 252 100  
 253 24.5 17.9 26.9  
 125 11.7 8.4 12.6

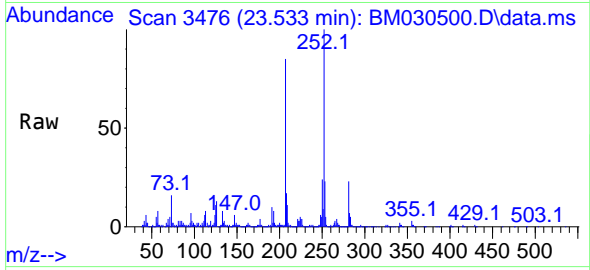






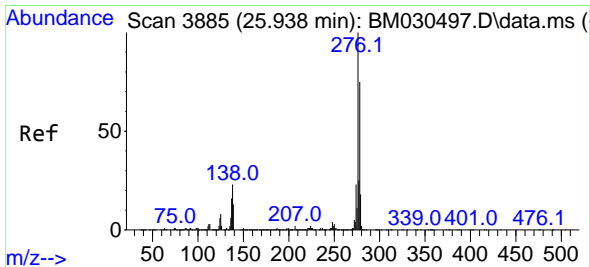
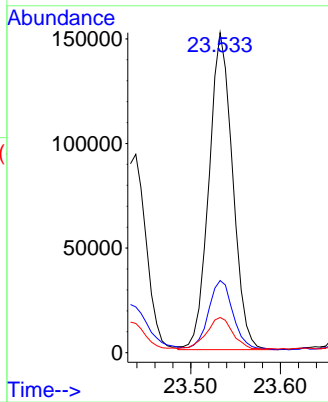
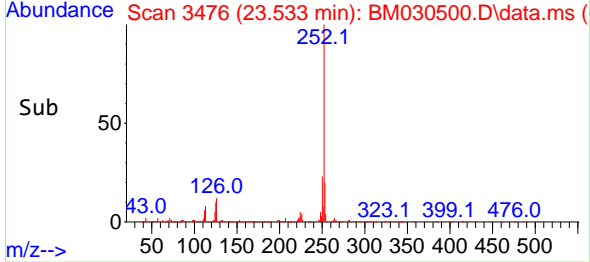
#93  
 Benzo(a)pyrene  
 Concen: 6.188 ng/u1  
 RT: 23.533 min Scan# 3476  
 Delta R.T. 0.000 min  
 Lab File: BM030500.D  
 Acq: 21 Jun 2021 11:51

**Instrument :**  
 BNA\_M  
**ClientSampled :**  
 BG5J1

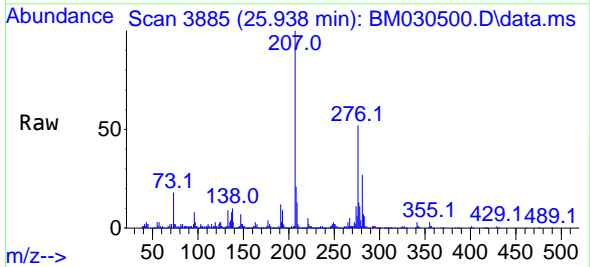


Tgt Ion:252 Resp: 277472  
 Ion Ratio Lower Upper  
 252 100  
 253 22.6 17.8 26.8  
 125 11.0 9.5 14.3

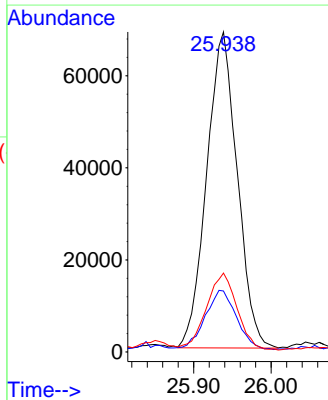
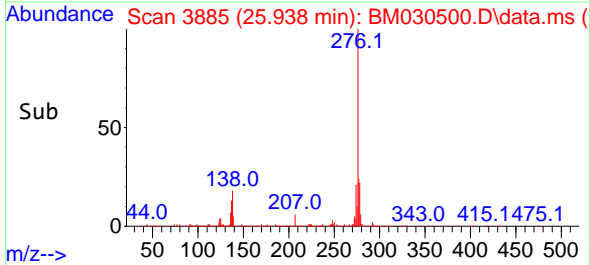
**Manual Integrations**  
**APPROVED**  
 mohammad  
 6/22/2021 8:16:08 AM

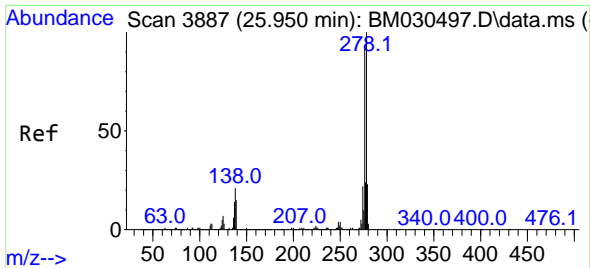


#94  
 Indeno(1,2,3-cd)pyrene  
 Concen: 3.411 ng/u1  
 RT: 25.938 min Scan# 3885  
 Delta R.T. 0.000 min  
 Lab File: BM030500.D  
 Acq: 21 Jun 2021 11:51



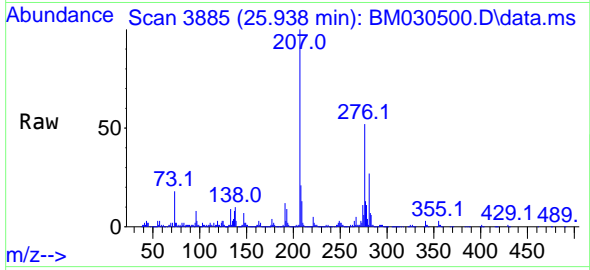
Tgt Ion:276 Resp: 188216  
 Ion Ratio Lower Upper  
 276 100  
 138 19.0 21.8 32.6#  
 277 24.7 20.3 30.5





#95  
 Dibenzo(a,h)anthracene  
 Concen: 1.027 ng/ul  
 RT: 25.938 min Scan# 3885  
 Delta R.T. -0.012 min  
 Lab File: BM030500.D  
 Acq: 21 Jun 2021 11:51

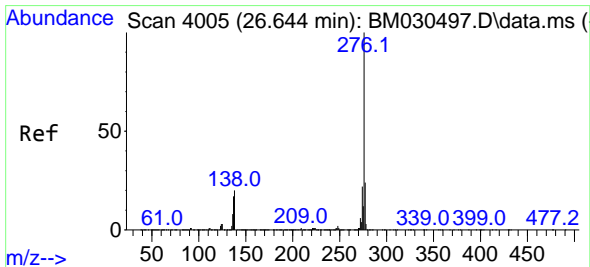
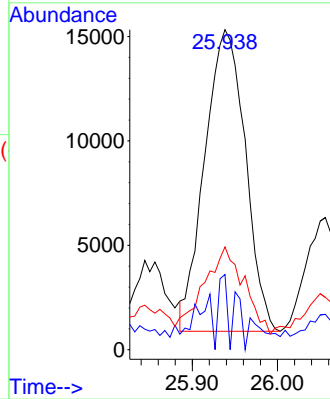
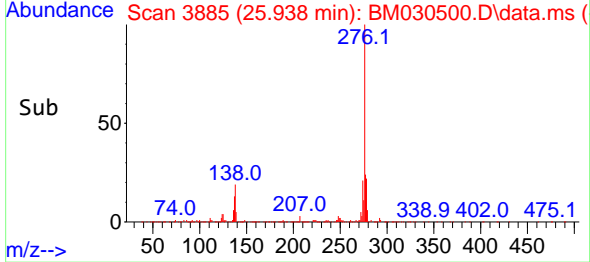
Instrument :  
 BNA\_M  
 ClientSampled :  
 BG5J1



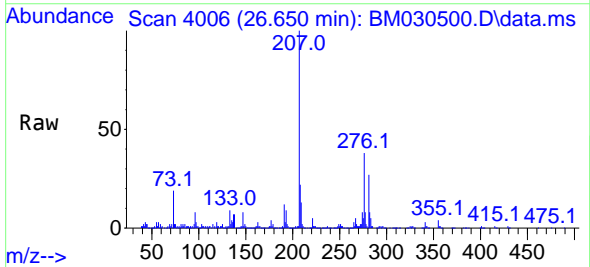
Tgt Ion:278 Resp: 47728  
 Ion Ratio Lower Upper  
 278 100  
 139 23.5 13.4 20.2#  
 279 32.1 18.6 28.0#

Manual Integrations  
 APPROVED

mohammad  
 6/22/2021 8:16:08 AM



#96  
 Benzo(g,h,i)perylene  
 Concen: 3.444 ng/ul  
 RT: 26.650 min Scan# 4006  
 Delta R.T. 0.006 min  
 Lab File: BM030500.D  
 Acq: 21 Jun 2021 11:51



Tgt Ion:276 Resp: 156187  
 Ion Ratio Lower Upper  
 276 100  
 138 19.5 18.7 28.1  
 277 21.9 18.6 28.0

