

Data Path : Z:\SVOASRV\HPCHEM1\BNA M\DATA\BM062519\  
 Data File : BM021187.D  
 Acq On : 26 Jun 2019 12:14  
 Operator : HP/JU  
 Sample : K3498-04DL 5X  
 Misc :  
 ALS Vial : 36 Sample Multiplier: 1

Instrument :  
 BNA\_M  
 ClientSampleId :  
 C5AA3DL

Quant Time: Jun 26 13:05:59 2019  
 Quant Method : Z:\SVOASRV\HPCHEM1\BNA\_M\METHODS\SOM-EPA-BM061419MA.M  
 Quant Title : SVOA CALIBRATION  
 QLast Update : Wed Jun 26 01:32:57 2019  
 Response via : Initial Calibration

Internal Standards	R.T.	QIon	Response	Conc	Units	Dev(Min)
1) 1,4-Dichlorobenzene-d4	7.77	152	220047	20.00	ng/ul	0.00
18) Naphthalene-d8	10.55	136	978945	20.00	ng/ul	0.00
35) Acenaphthene-d10	14.40	164	662776	20.00	ng/ul	0.00
61) Phenanthrene-d10	17.16	188	1671104	20.00	ng/ul	0.00
77) Chrysene-d12	21.34	240	1641477	20.00	ng/ul	0.00
85) Perylene-d12	23.61	264	1571569	20.00	ng/ul	0.00

## System Monitoring Compounds

3) 1,4-Dioxane-d8	3.29	96	4265	0.92	ng/uL	0.01
5) Phenol-d5	6.93	99	72480	3.78	ng/ul	0.00
7) Bis-(2-Chloroethyl)ether-d	7.11	67	49046	4.30	ng/ul	0.00
9) 2-Chlorophenol-d4	7.30	132	64177	4.12	ng/ul	0.00
13) 4-Methylphenol-d8	8.47	113	56230	3.52	ng/ul	0.00
19) Nitrobenzene-d5	8.93	128	33684	4.24	ng/ul	0.00
22) 2-Nitrophenol-d4	9.65	143	34322	3.89	ng/ul	0.00
26) 2,4-Dichlorophenol-d3	10.18	165	74675	4.16	ng/ul	0.00
29) 4-Chloroaniline-d4	10.70	131	85820	4.59	ng/ul	0.00
43) Dimethylphthalate-d6	13.82	166	305543	5.10	ng/ul	0.00
46) Acenaphthylene-d8	14.10	160	349708	4.77	ng/ul	0.00
51) 4-Nitrophenol-d4	14.63	143	19630	2.02	ng/ul	0.00
57) Fluorene-d10	15.40	176	287529	5.52	ng/ul	0.00
62) 4,6-Dinitro-2-methylphenol	15.53	200	24471	2.38	ng/ul	0.00
70) Anthracene-d10	17.25	188	450838	5.19	ng/ul	0.00
78) Pyrene-d10	19.55	212	518969	5.27	ng/ul	0.00
89) Benzo(a)pyrene-d12	23.47	264	460032	4.96	ng/ul	0.00

## Target Compounds

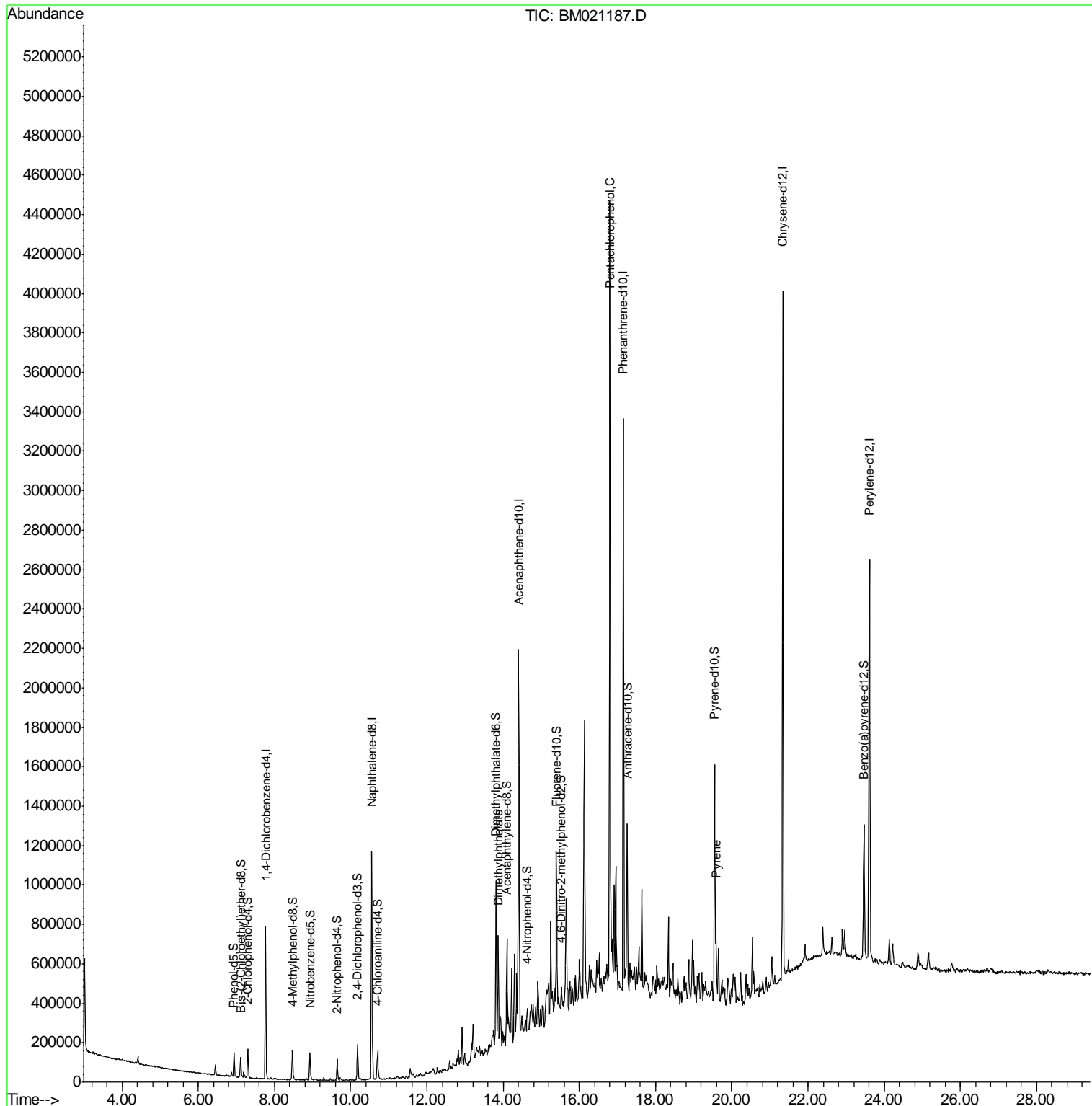
Target Compounds	R.T.	QIon	Response	Conc	Units	Ovalue
44) Dimethylphthalate	13.86	163	72980	1.339	ng/ul	98
68) Pentachlorophenol	16.80	266	741091	62.930	ng/ul	99
79) Pyrene	19.58	202	208469	1.796	ng/ul	99

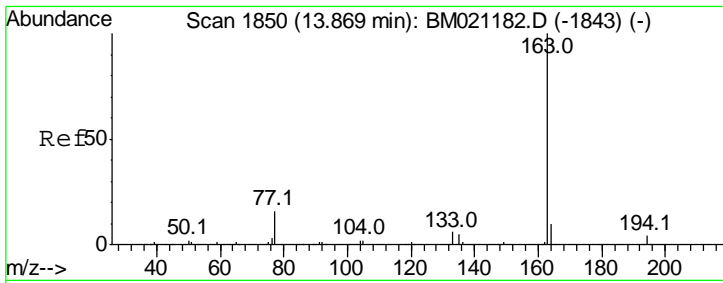
(#) = qualifier out of range (m) = manual integration (+) = signals summed

Data Path : Z:\SVOASRV\HPCHEM1\BNA M\DATA\BM062519\  
 Data File : BM021187.D  
 Acq On : 26 Jun 2019 12:14  
 Operator : HP/JU  
 Sample : K3498-04DL 5X  
 Misc :  
 ALS Vial : 36 Sample Multiplier: 1

Instrument :  
 BNA\_M  
 ClientSampleId :  
 C5AA3DL

Quant Time: Jun 26 13:05:59 2019  
 Quant Method : Z:\SVOASRV\HPCHEM1\BNA\_M\METHODS\SOM-EPA-BM061419MA.M  
 Quant Title : SVOA CALIBRATION  
 QLast Update : Wed Jun 26 01:32:57 2019  
 Response via : Initial Calibration



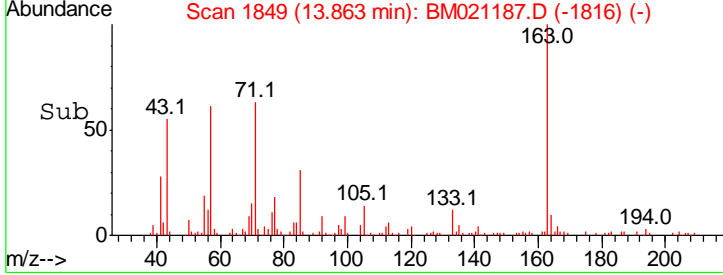
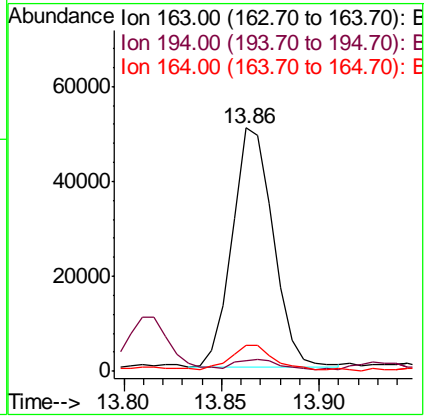
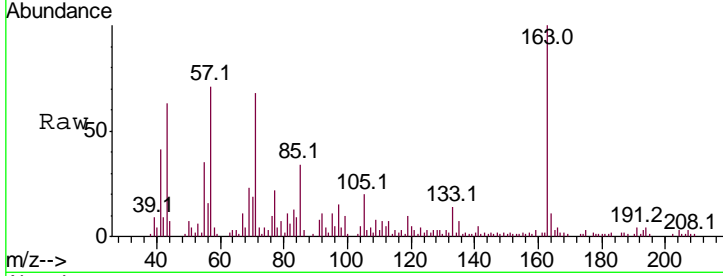


#44  
 Dimethylphthalate  
 Concen: 1.339 ng/ul  
 RT: 13.86 min Scan# 1849  
 Delta R.T. -0.01 min  
 Lab File: BM021187.D  
 Acq: 26 Jun 2019 12:14

**Instrument :**  
 BNA\_M  
**Client Sampled :**  
 C5AA3DL

Tgt Ion: 163 Resp: 72980

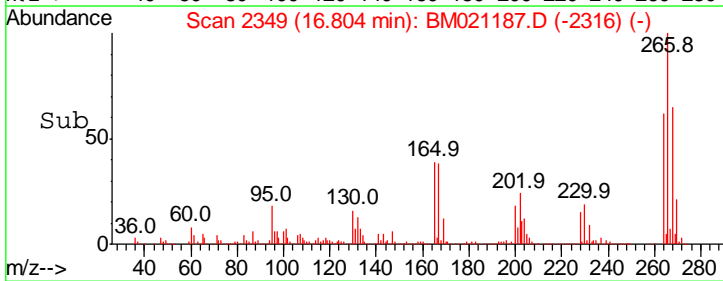
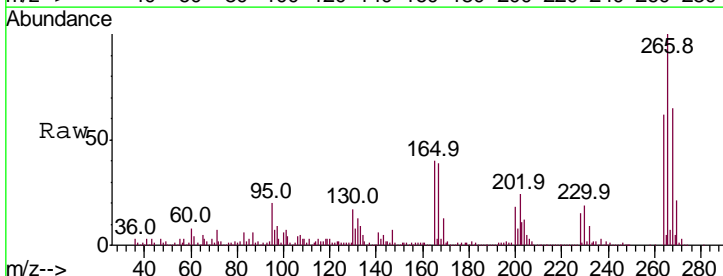
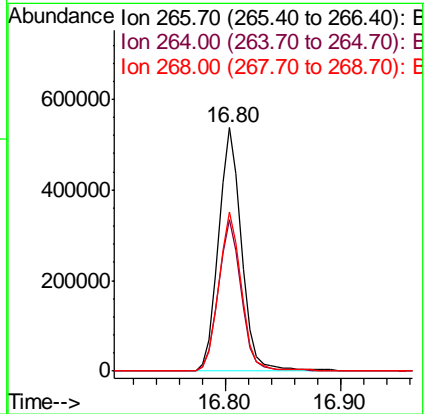
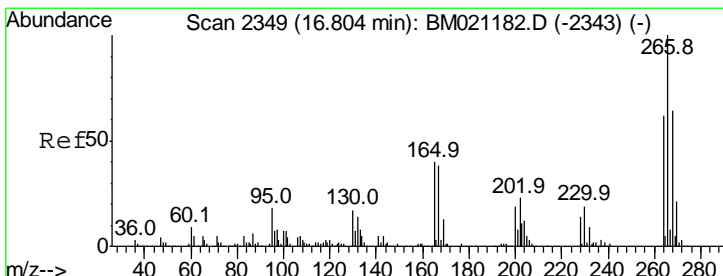
Ion	Ratio	Lower	Upper
163	100		
194	4.3	3.4	5.2
164	10.8	7.7	11.5

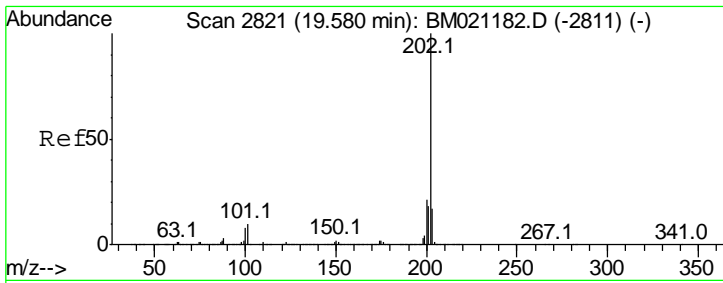


#68  
 Pentachlorophenol  
 Concen: 62.930 ng/ul  
 RT: 16.80 min Scan# 2349  
 Delta R.T. -0.01 min  
 Lab File: BM021187.D  
 Acq: 26 Jun 2019 12:14

Tgt Ion: 266 Resp: 741091

Ion	Ratio	Lower	Upper
266	100		
264	62.4	49.9	74.9
268	65.2	53.4	80.0





#79  
 Pyrene  
 Concen: 1.796 ng/ul  
 RT: 19.58 min Scan# 2821  
 Delta R.T. -0.00 min  
 Lab File: BM021187.D  
 Acq: 26 Jun 2019 12:14

**Instrument :**  
 BNA\_M  
**ClientSampled :**  
 C5AA3DL

Tot Ion	202	Resp	208469
Ion Ratio	Lower	Upper	
202	100		
101	10.6	8.1	12.1
100	7.7	6.6	10.0

